

# Vocational Rehabilitation & Division of Developmental Disabilities

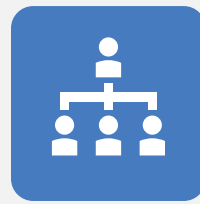
## Quarterly Collaboration Fact Sheet

### Monthly Progress for the Quarter

## HIGHLIGHTS

- VR & DDD joined community partners at the new monthly Monday Mindset Chat on Supported Employment, in order to address better utilization of services that help DDD members achieve competitive employment.
- DDD/VR Collaborative meetings were held with District North and Central DDD and VR offices, to further educate staff and foster collaboration to support mutual members.
- The DDD employment team began conducting observations of approximately 150 Group Supported Employment vendors to help prepare them for upcoming HCBS rule changes.
- The DDD employment team began visiting DDD's Employment Services & Supports trainings to foster connections with new staff and provide support.
- DDD/VR Collaborative meetings were held in District East DDD and VR offices, to further educate staff and foster collaboration to support mutual members.
- VR presented about the VR and DDD collaboration to Banner and United Health providers serving youth at the YES! Youth Employment Summit.
- The DDD employment team welcomed a new Employment Services Specialist for District South, Penelope Lovatt.
- VR & DDD participated in ongoing work group with Mercy Care, DCS, ADE, and other partners to collaborate on how to best serve DDD Foster Youth receiving behavioral health services.
- VR presented on the VR/DDD collaboration to DDD Mercy Care providers.
- VR, DDD, and OIFA presented at the ADE IDEA conference regarding the VR/DDD partnership helping youth with disabilities achieve employment.
- VR presented on VR services at the Autism Society's Adult Social Club in Tucson.
- VR & DDD joined in the Partners Presentation, a presentation of numerous community partners serving youth. Partners included the AZ CoPT, AHCCCS, ADE, RSK, and many more.
- The DDD and VR teams met with Community Options to learn about their new NBA grant award to promote competitive employment for minority youth with disabilities.

## QUARTER DATA



Referrals from DDD to VR



Mutual clients made eligible



Mutual clients placed in Competitive Integrated Employment



Average hours worked for mutual clients closed successfully employed



Average hourly wage of Successful Closures for mutual clients



