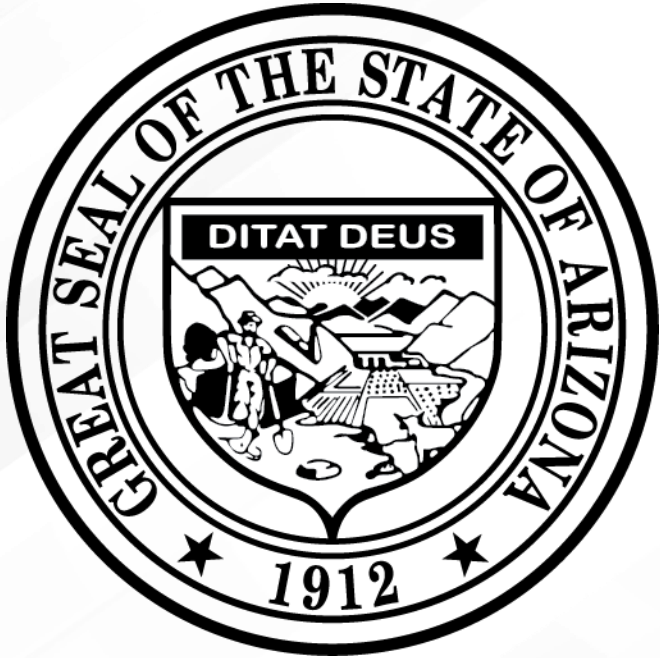


Introduction to the 4 Ds



DEPARTMENT OF ECONOMIC SECURITY

Your Partner For A Stronger Arizona

Copyright © 2018 Department of Economic Security.
Content may be used for educational purposes without written permission but with a citation to this source



Housekeeping



Introductions

Name

Job Title

**Which of the 4 DDs you
are most familiar with**



People with disabilities are FIRST, FOREMOST, and ALWAYS people.



Objectives

- Define developmental disability
- Distinguish between the four qualifying developmental disabilities
- Recognize the symptoms of the four developmental disabilities
- List the seven functional limitations



Developmental Disabilities

Arizona's Definition

4 qualifying developmental disabilities

Manifests before age 18

Likely to continue indefinitely

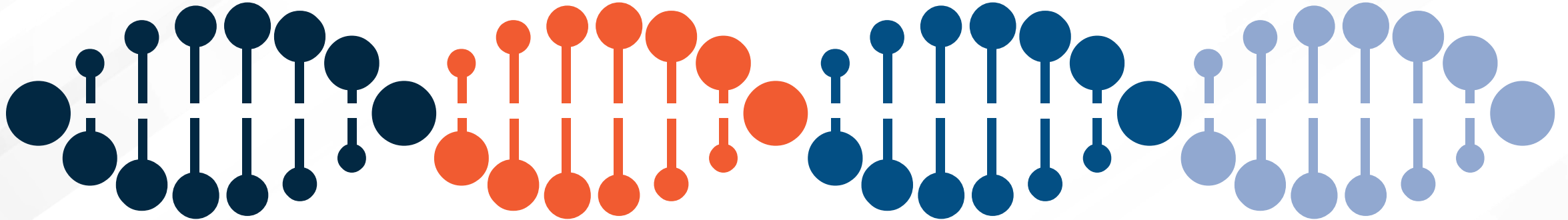
Limitations in 3+ life areas



The Four Developmental Disabilities

Epilepsy

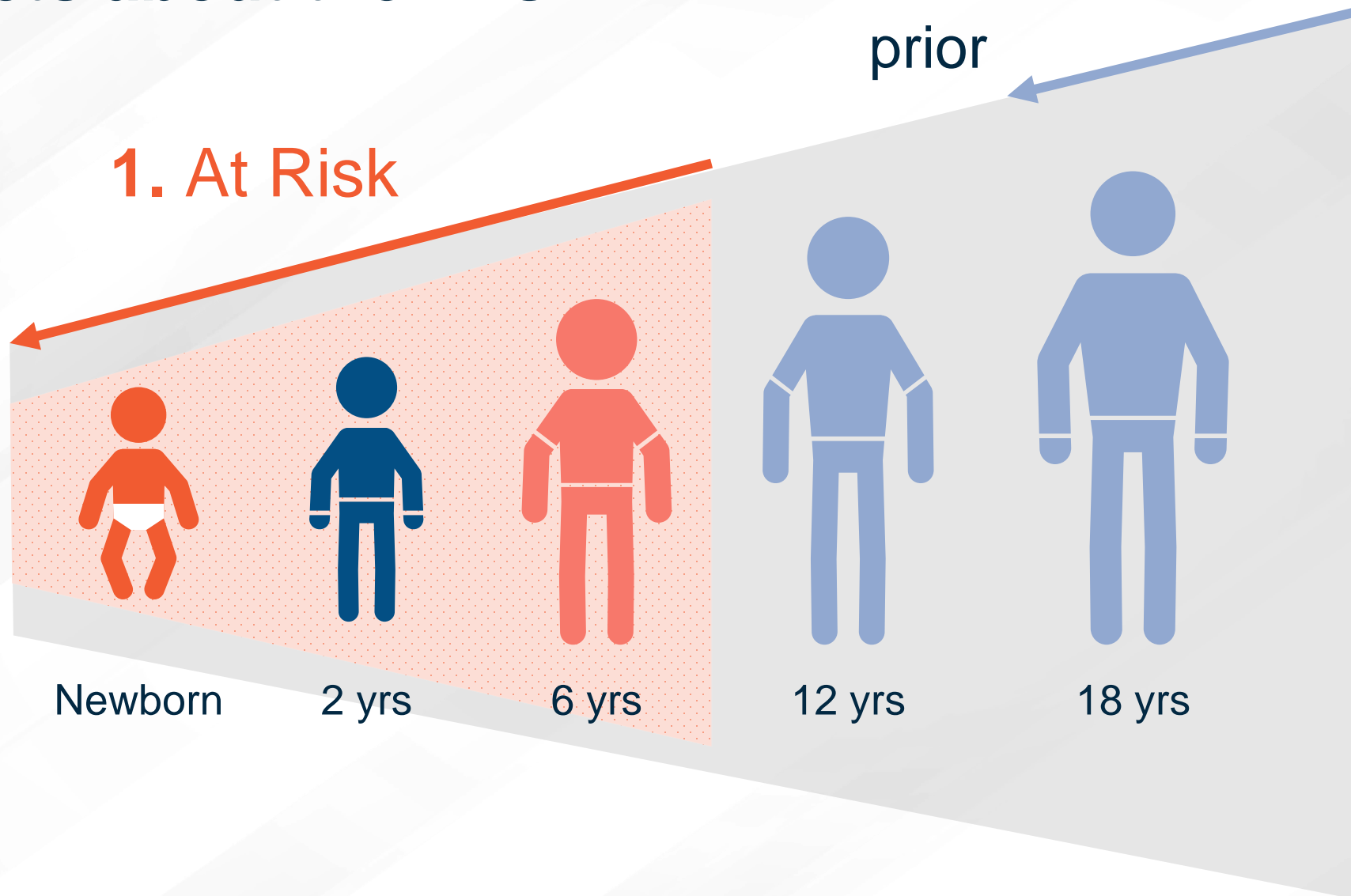
Cerebral Palsy



Intellectual Disability

Autism / Autism
Spectrum Disorder

Facts about the 4Ds



Review Question

A 26 year old individual calls to apply for services after experiencing their first seizure 2 weeks ago.

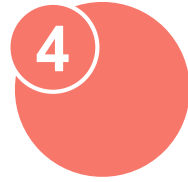
Would this individual qualify for DDD?



Substantial Functional Limitations



Self-care



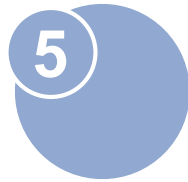
Mobility



Economic self-sufficiency



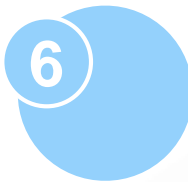
Receptive and expressive language



Self-direction



Learning



Capacity for independent living

Causes of Developmental Disabilities

Disease or infection

Toxins

Genetic factors

Complications during birth

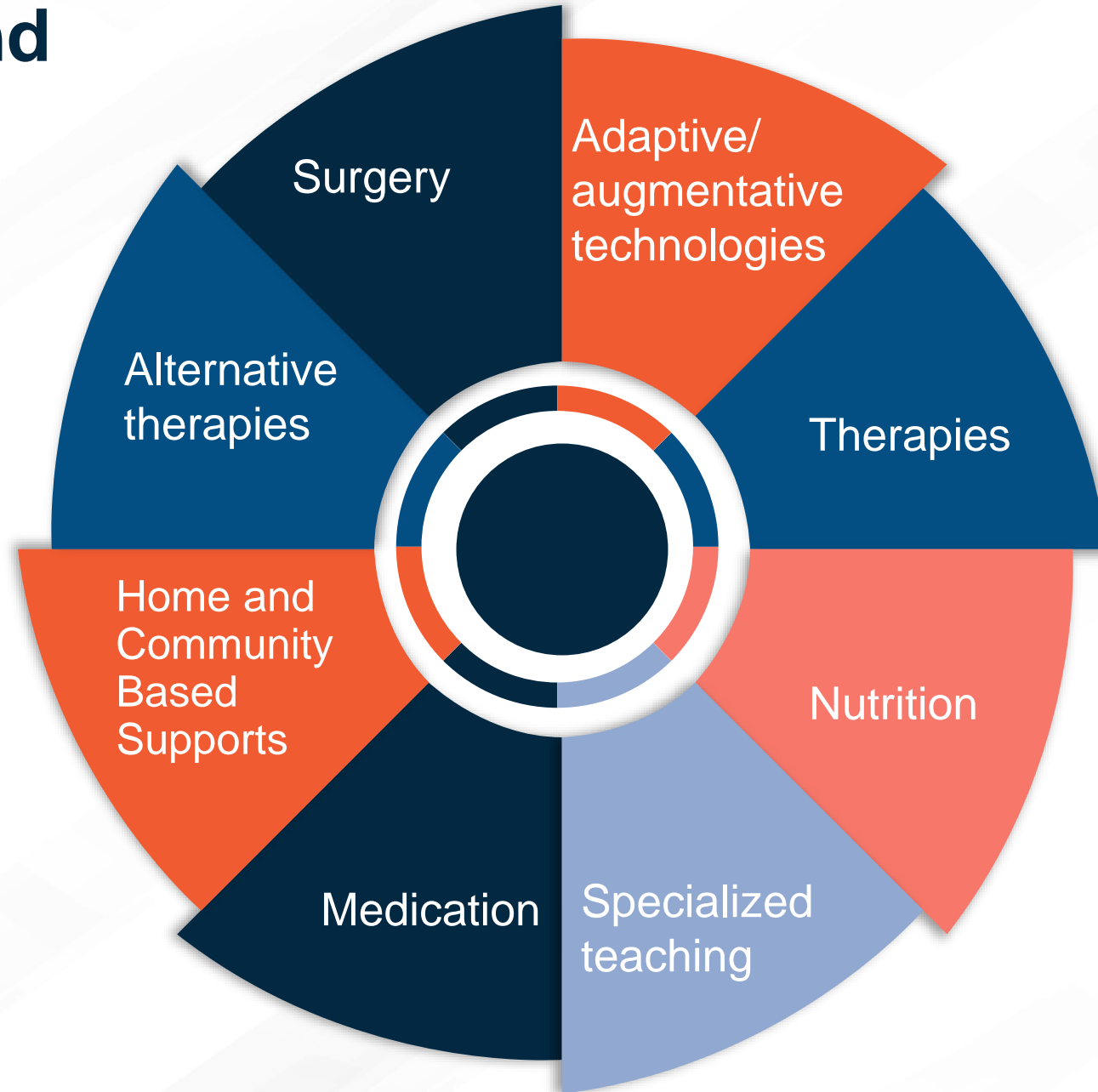
Environmental factors

Trauma or injury

Medical issues

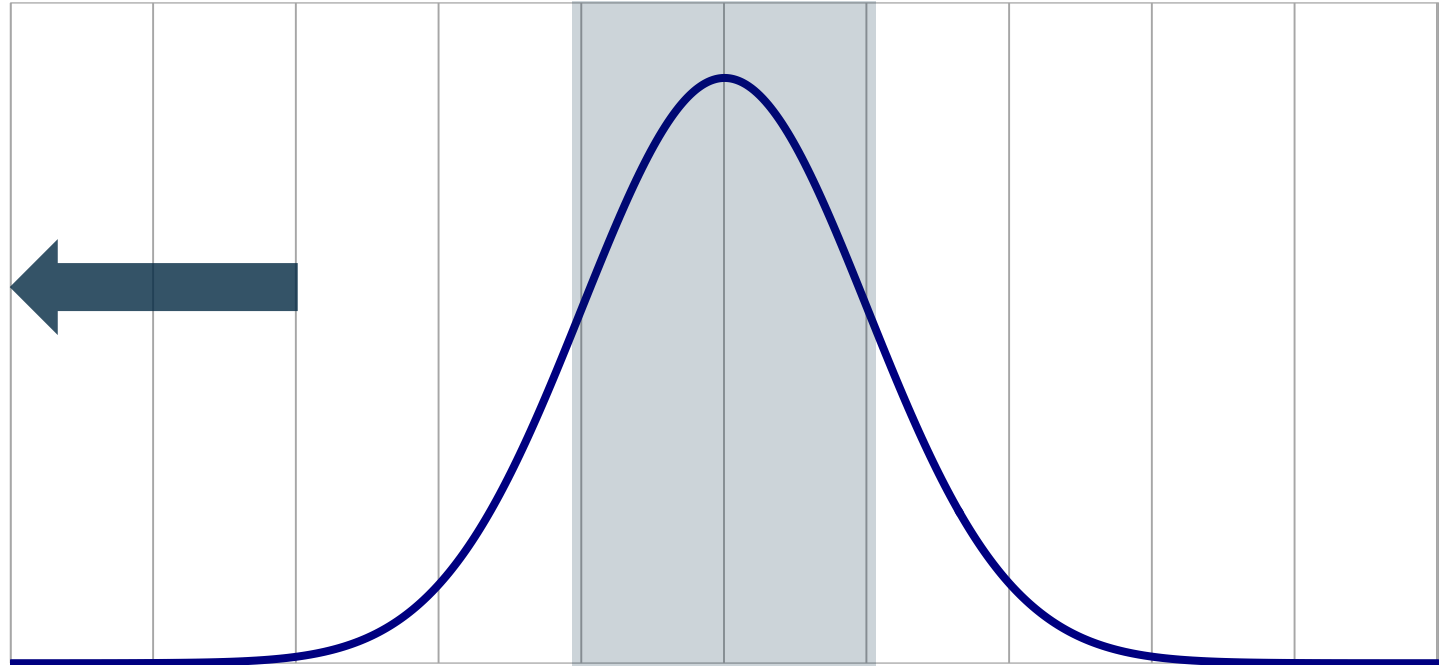
Metabolic disorders

Interventions and Supports



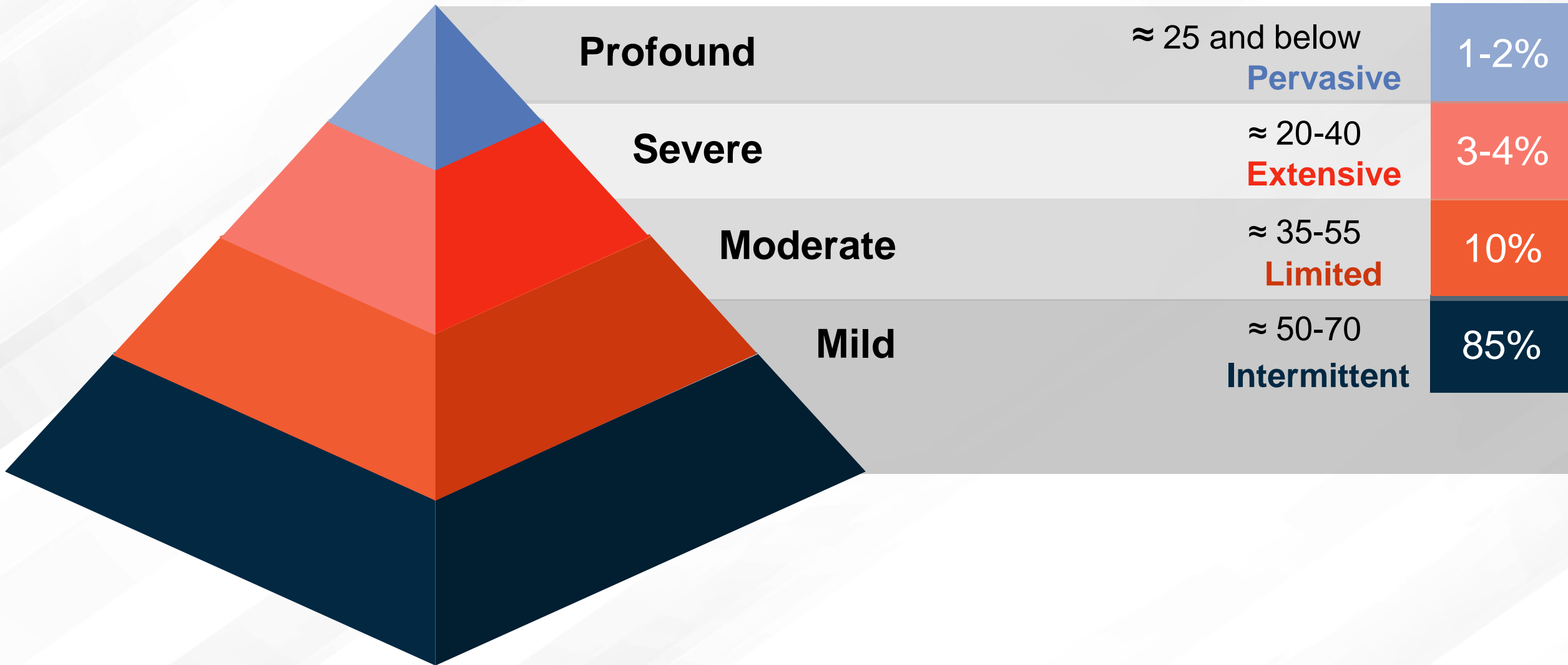
Intellectual/Cognitive Disability

IQ Normal Curve



Standard Deviation	-4	-3	-2	-1	0	1	2	3	4
Wechsler IQ	40	55	70	85	100	115	130	145	160
Stanford-Binet IQ	36	52	68	84	100	116	132	148	164
Cumulative %	0.003	0.135	2.275	15.866	50	84.134	97.725	99.865	99.997

Severity of Intellectual Disability

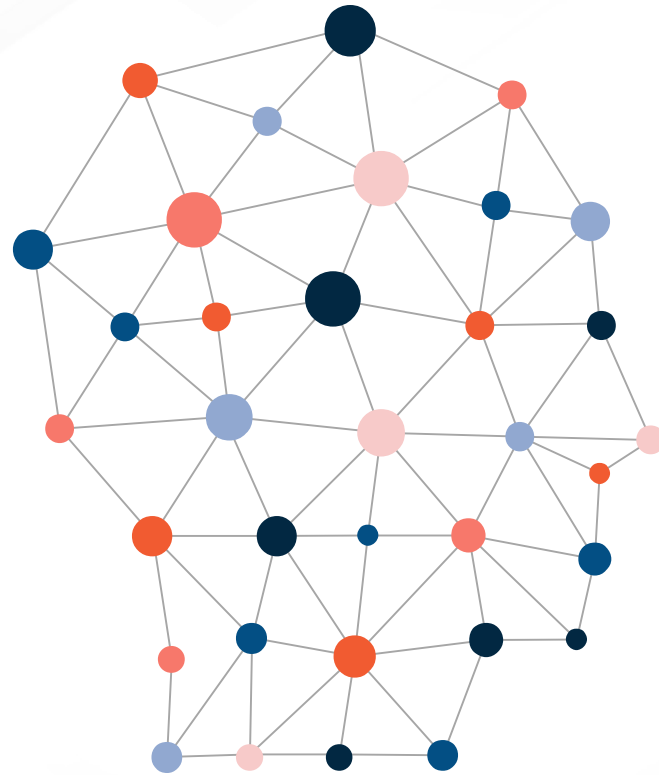


Epilepsy and Seizures



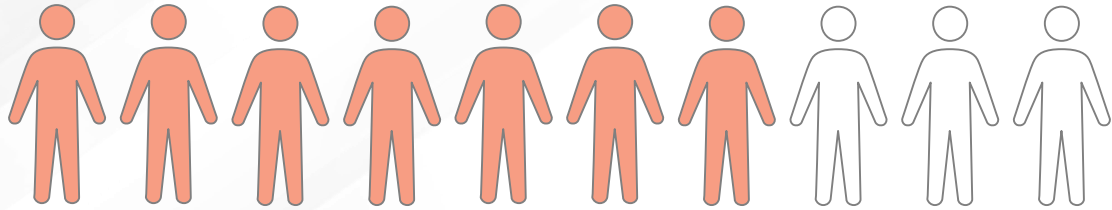
Seizure is a symptom of epilepsy.

Characterized by recurring seizures.



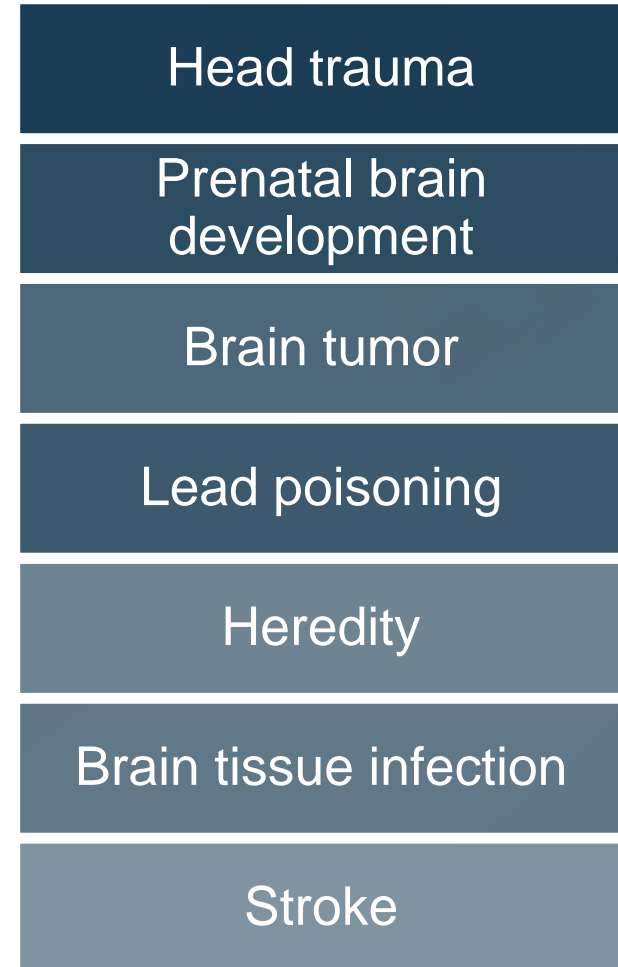
<https://youtu.be/peov8jYRJw4>

Causes of Epilepsy

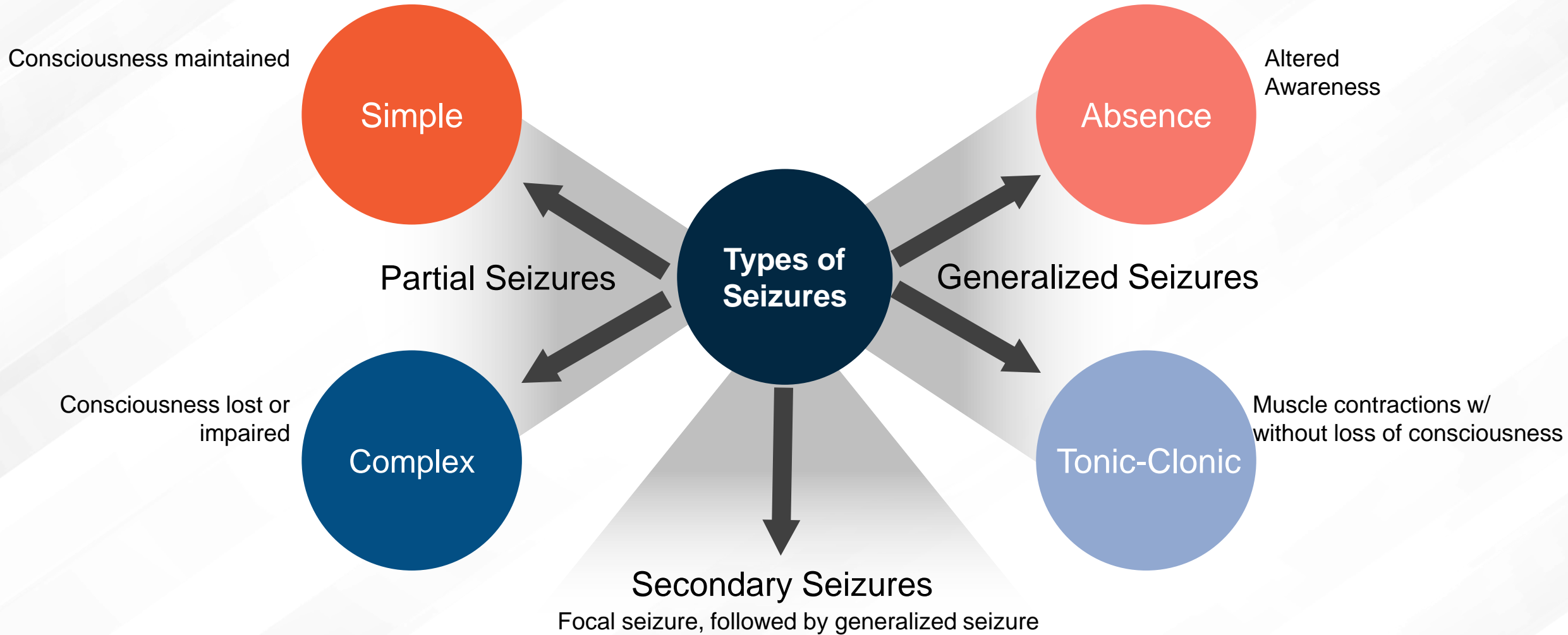


70% Unknown

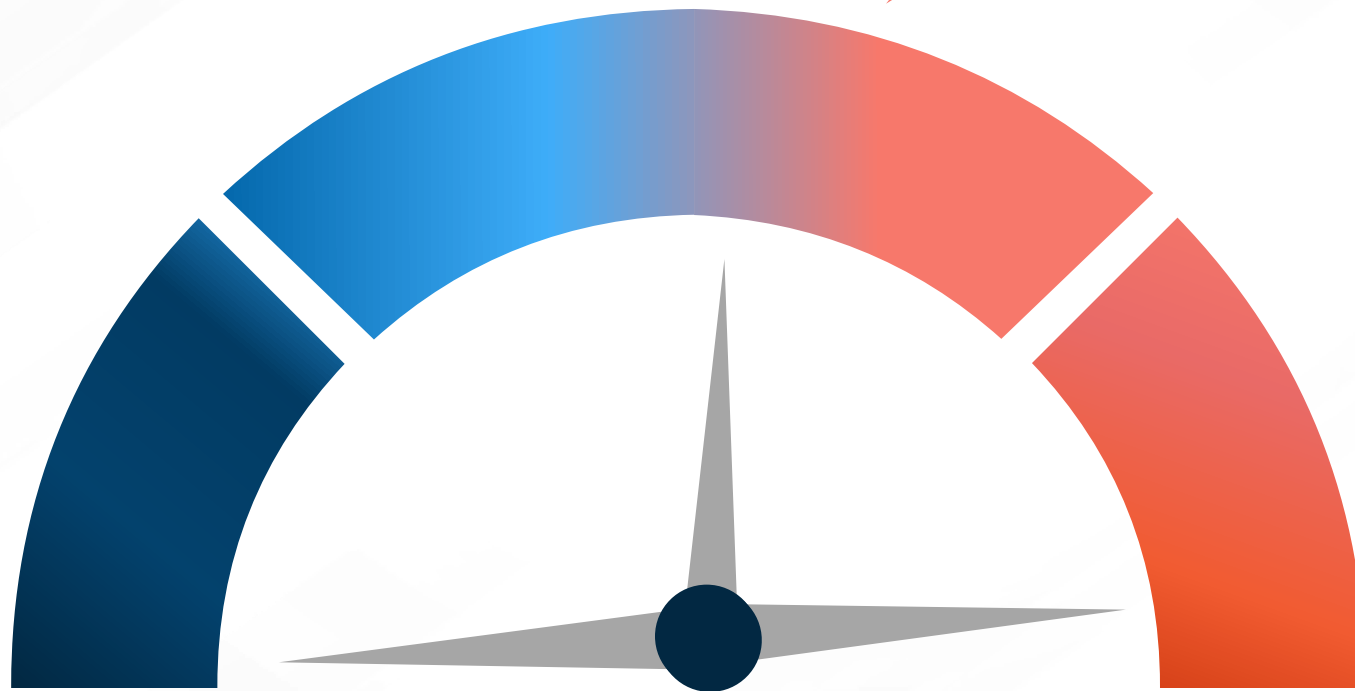
30%



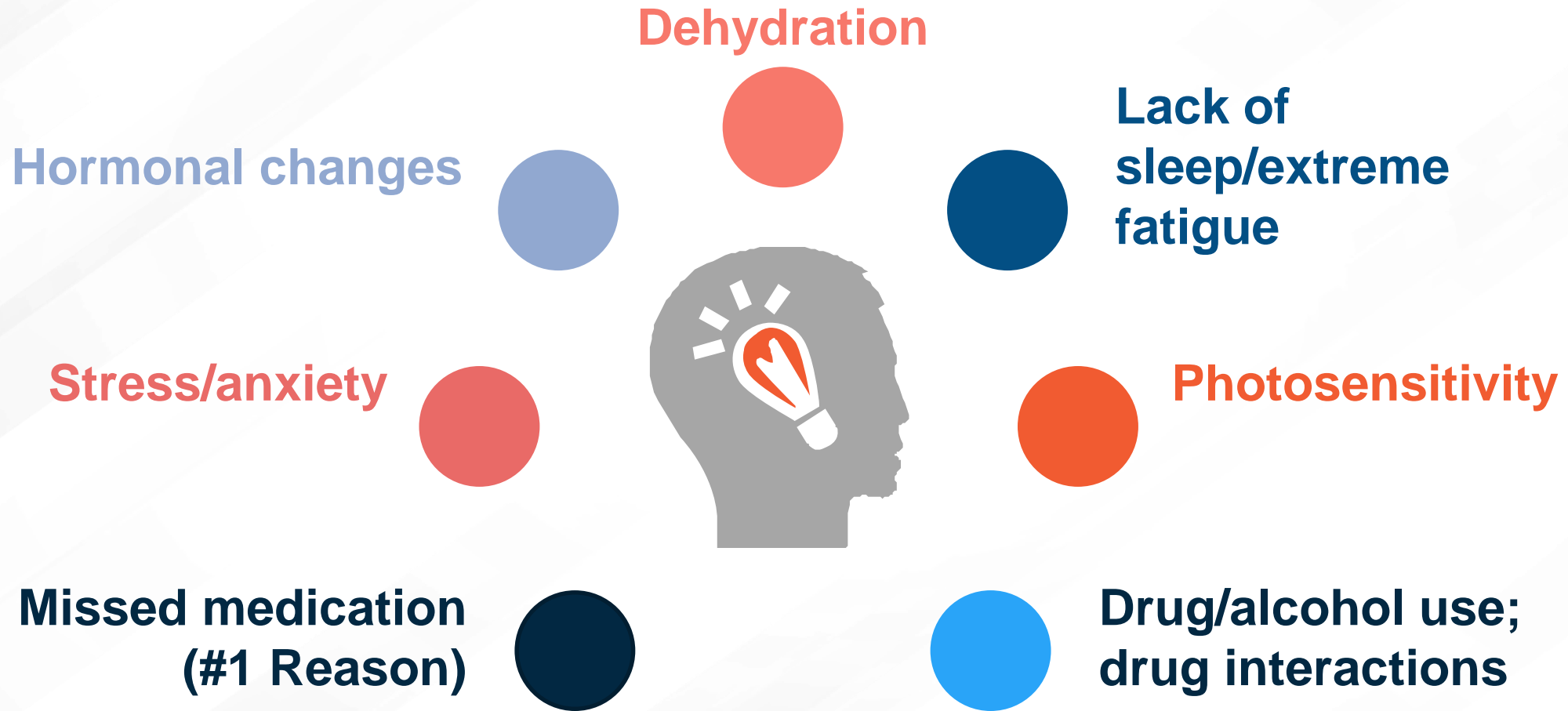
Types of Seizures



Spectrum of Severity



Seizure Triggers



Seizure Support

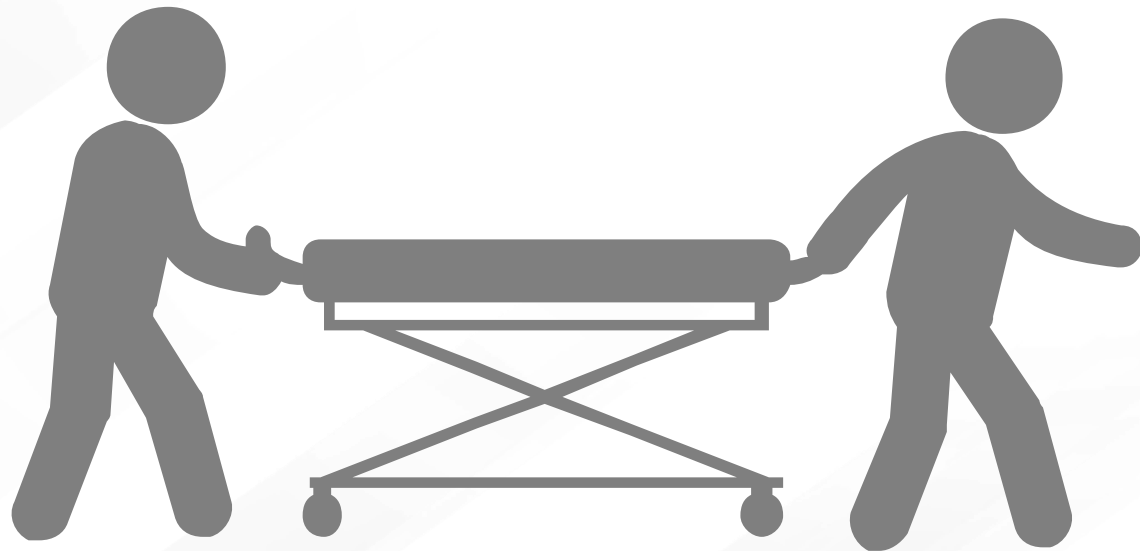


&



Emergency Situations

When to Call for 911



Epilepsy Treatments



Medication



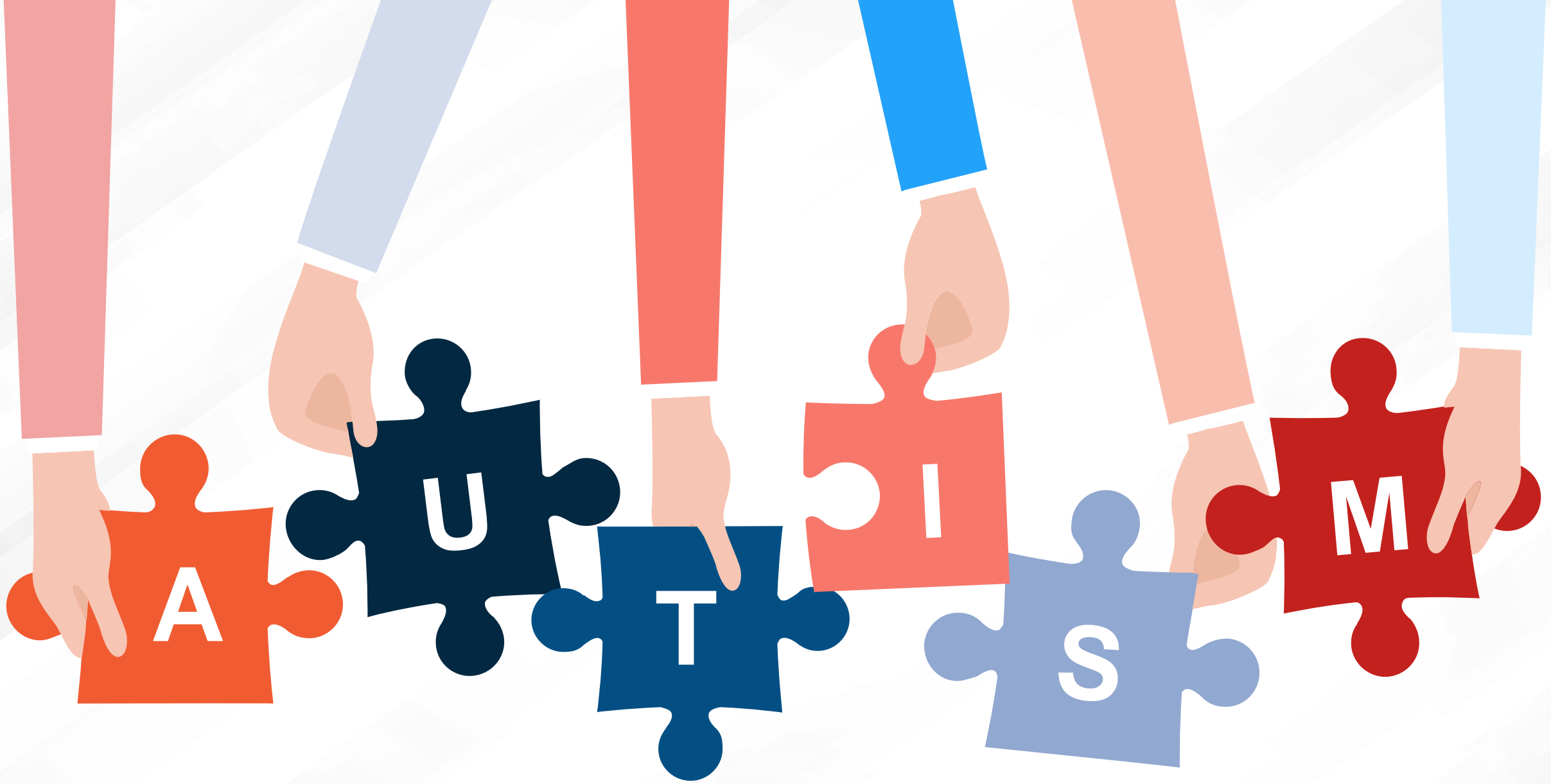
Surgery

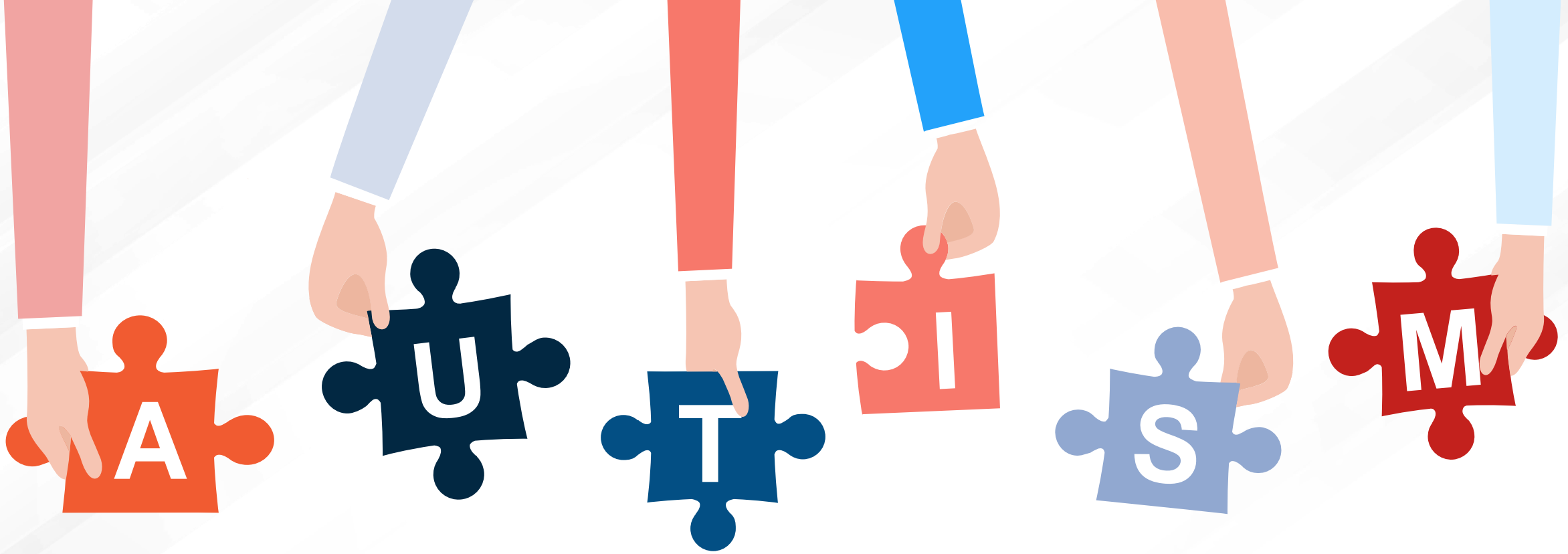


Non-
pharmacologic

Safety Concerns



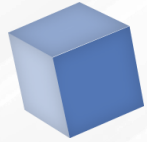




“A condition characterized by severe disorders in communication and behavior resulting in limited ability to communicate, understand, learn and participate in social relationships.”

A developmental disability that can cause significant social, communication and behavioral challenges.

Signs and Symptoms of Autism / ASD



Not respond to name



Not point to objects



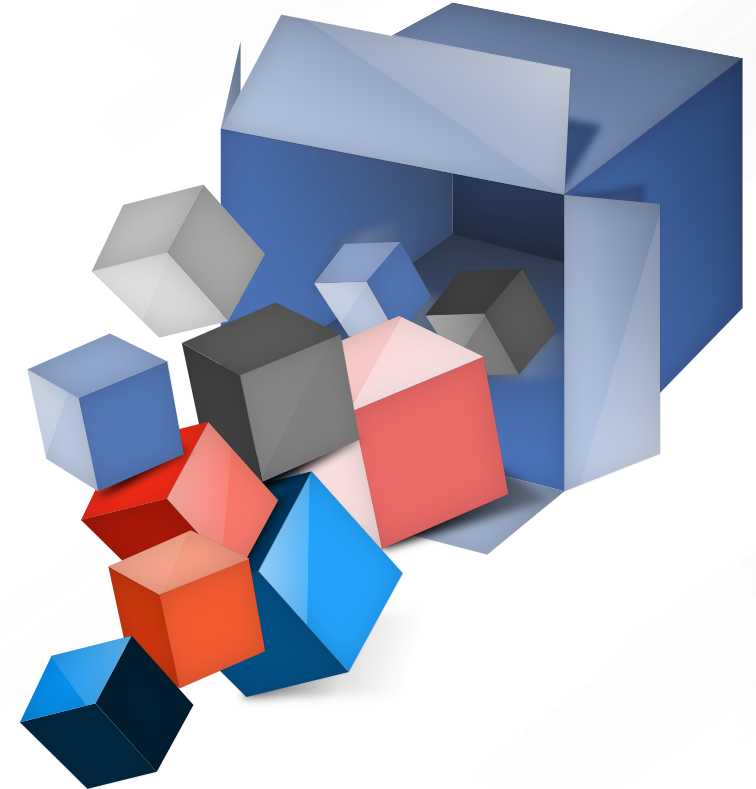
Play differently



Avoid eye contact



Have difficulty understanding feelings



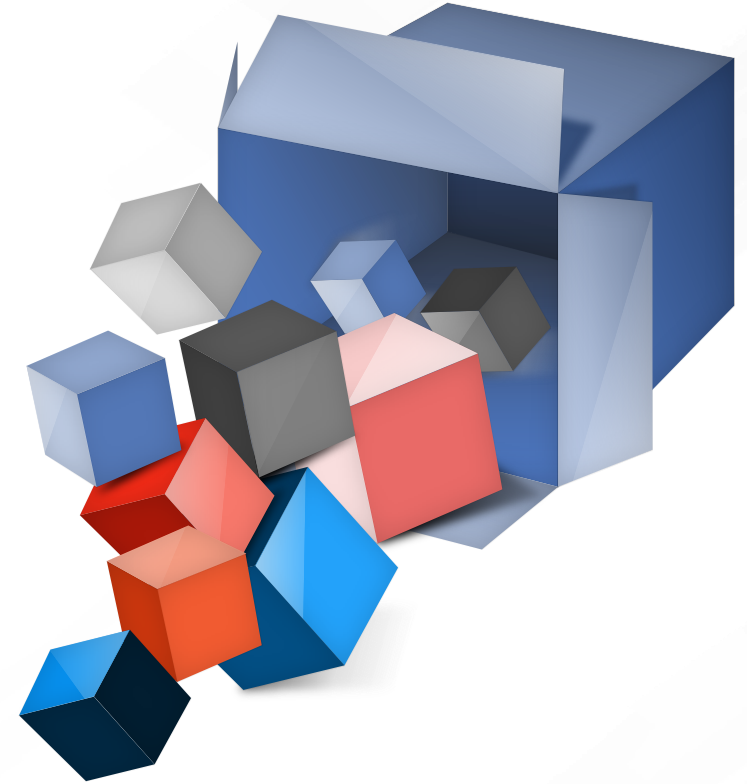
Signs and Symptoms of Autism / ASD


 Speech / Language delays

 Obsessive interests

 Need for routine

 Sensory Regulation/Input





Autism / Autism
Spectrum Disorder
"Awareness" Ten
Things You Should
Know

Treatments and Interventions



Cerebral Palsy

Zach Anner Video



**CEREBRAL
PALSY
FOUNDATION**

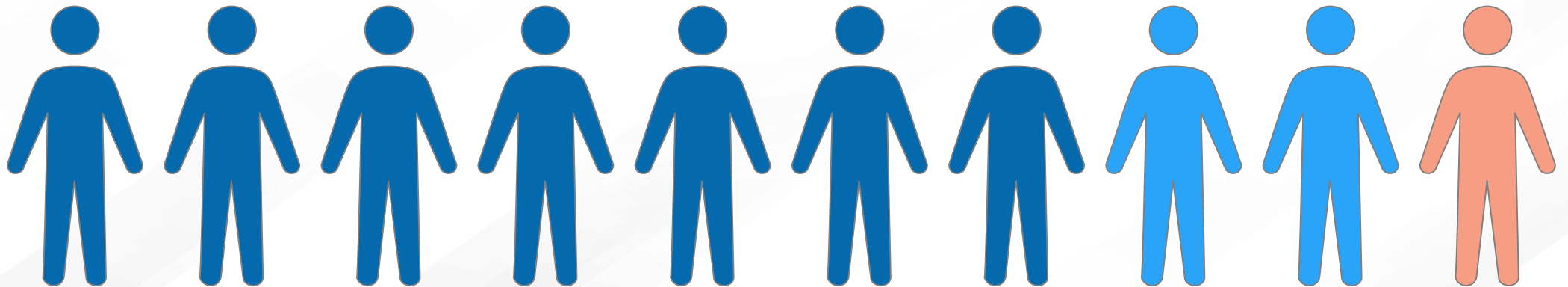
DISCOVERY FOR DISABILITY

Causes of Cerebral Palsy

Congenital

Brain injury in the birthing process

Acquired



Early Signs

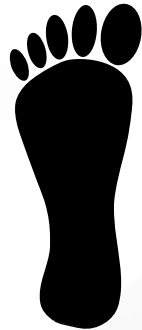
0-6
months

- Head Lags when picked up from lying on back
- Feels Stiff
- Feels “Floppy”
- Legs get stiff and cross when picked up



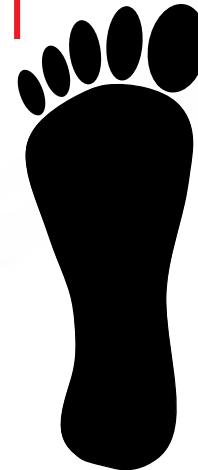
6-10
months

- Doesn't roll in either direction
- Cannot bring hands together
- Difficulty bringing hands to mouth
- Legs get stiff and cross when picked up



10+
months

- Crawls in a lopsided manner, pushing off with one hand and leg while dragging the opposite hand and leg
- Scoots around on buttocks or hops on knees, but does not crawl on all fours



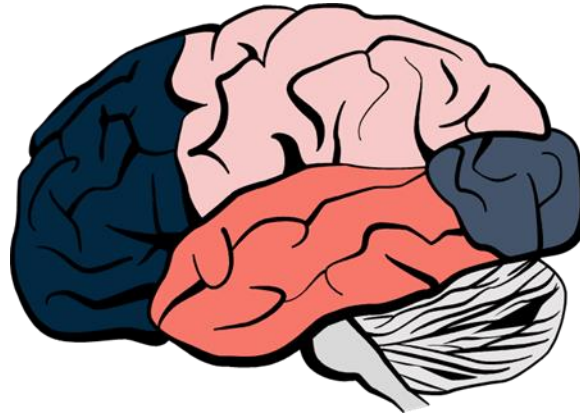
Types of Cerebral Palsy

Spastic

Increased muscle tone
– stiff limbs

Hypertonic /
Pyramidal

Most common type



Non - Spastic

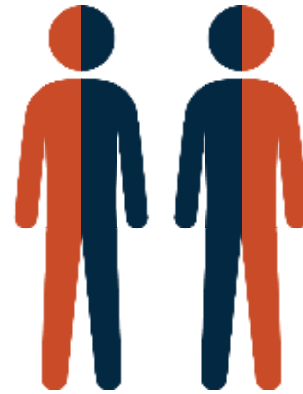
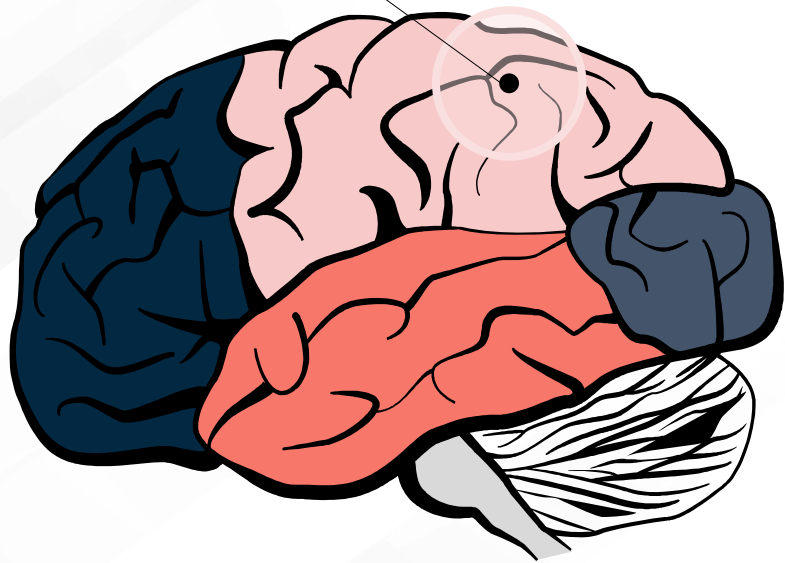
Decreased muscle tone
– floppy limbs

Hypotonic /
Extrapyramidal

Fluctuating muscle
tone – involuntary
movements

Spastic Cerebral Palsy

Spastic



**Spastic
Hemiplegia**



**Spastic
Diplegia**



**Spastic
Quadriplegia**

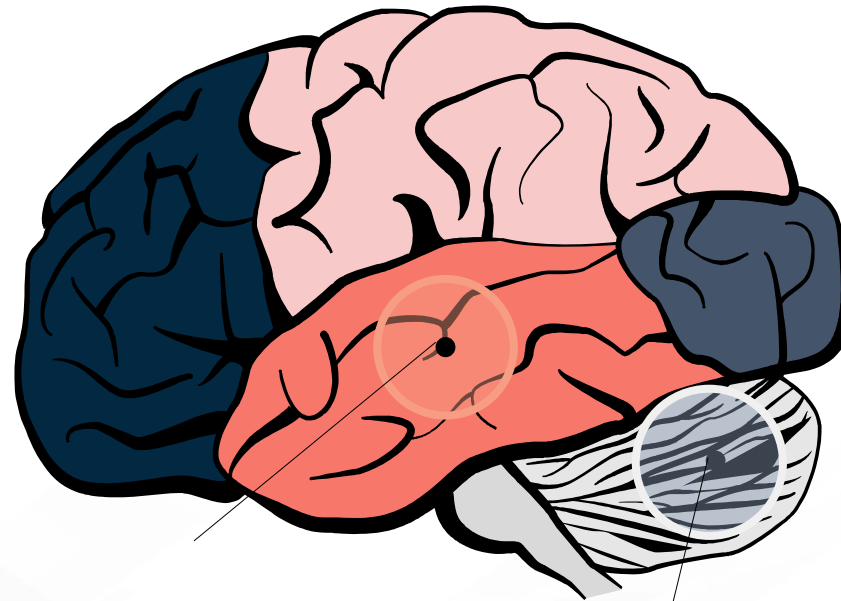
Non-Spastic Cerebral Palsy

Dyskinetic

Slow and uncontrollable movements of extremities

Muscle hyperactivity in face/ tongue

Intelligence rarely affected



Dyskinetic

Ataxic

Ataxic / Ataxia

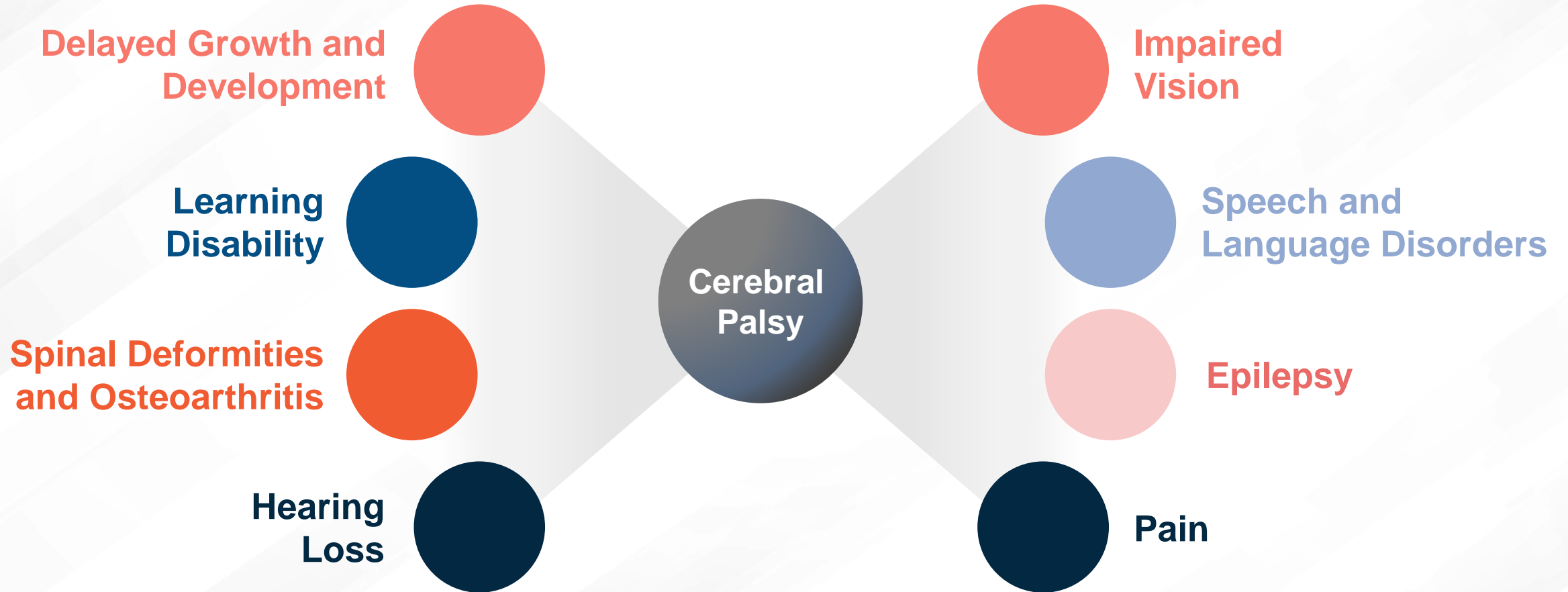
Impaired balance and coordination

Wide and irregular gait

Impaired eye movements/vision

Affects fine motor skills

Accompanying Issues



Treatment Types



Therapeutic



Surgery



Drug Treatment



Complementary/
Alternative
Treatments

Review

