

Division of Child Care

Supporting the well-being and economic independence of Arizona's families by providing quality child care assistance and services.

Updated: July 2023

Division of Child Care 2

Supporting the well-being and economic independence of Arizona's families by providing quality child care assistance and services.

- Provider Network & Support Administration
- Family Support & Eligibility Administration
- ECE Quality & Systems Building Administration
- Operations Support Administration
- IT Systems Administration
- Performance & Strategic Initiatives Team

Child Care and Development Block Grant

Legal Authority: The 2014 Child Care *and* Development Block Grant recognizes that child care providers play a critical role in early childhood brain development.

As Arizona's Lead Agency for CCDBG, DES is required to ensure equal access to quality care, focused on child development & well-being.

- ★ **In Arizona, we accomplish this through State & Community Coordination, Child Care Assistance, DHS Licensing Standards, the DES Provider Registration Agreement, Certified Family Providers, and Quality Set Aside.**

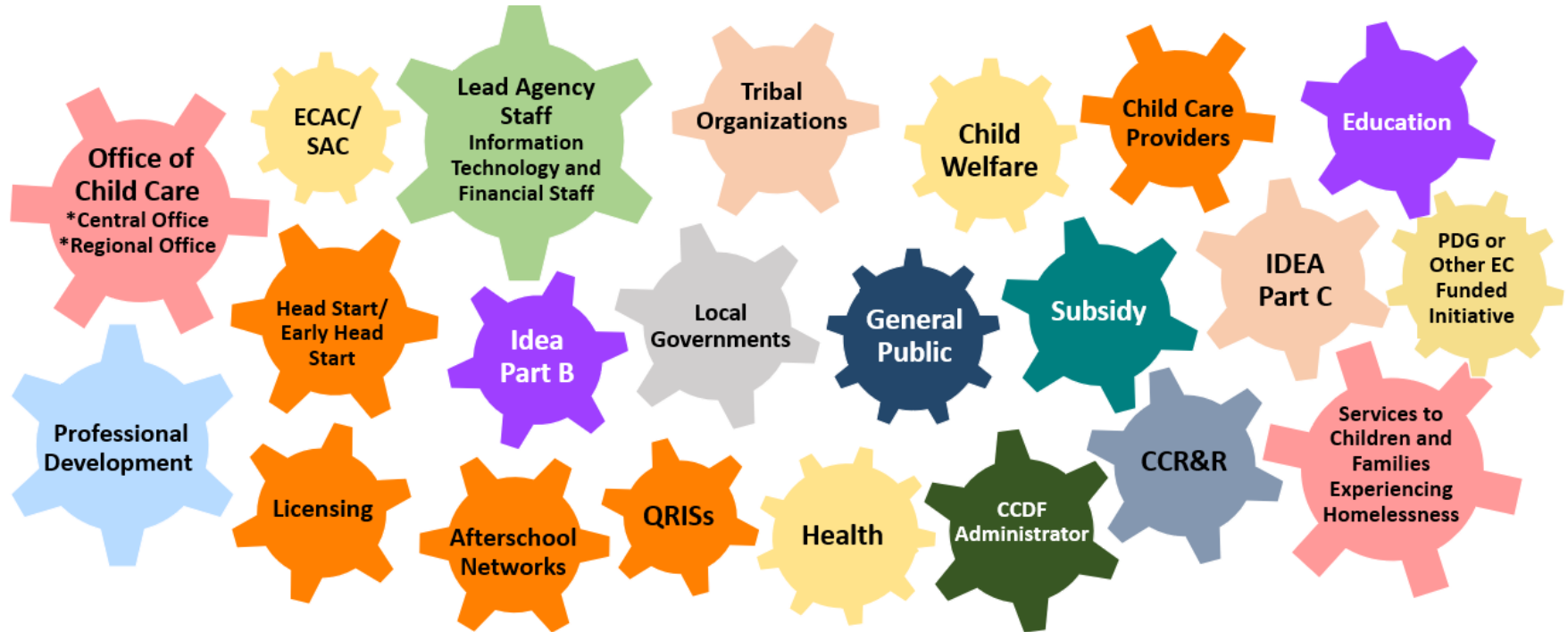
Child Care and Development Fund

Major Provisions of CCDF:

- Protect the **health and safety** of children in child care.
- Help parents make **informed choices** and access information to support child development.
- Support **equal access** to stable, high **quality** child care for children from low income families.
- Enhance the quality of the early childhood and child care **workforce**.



CCDF: Coordination & Collaboration



CCDBG/CCDF Resources

- ④ [Arizona CCDF State Plan: FFY 2022-2024](#) (as amended)
- ④ [Administration for Children & Families Office of Child Care](#)
- ④ [Office of Child Care: CCDF Reauthorization](#)

DES Child Care Assistance Program

Child care assistance in Arizona is available for families at or below 165% of the Federal Poverty Level (FPL) with children 12 years of age or younger.

Eligibility:

- Low-income families that are working
- Teen parents enrolled in high school, GED, ESOL or remedial education classes
- Residents of homeless or domestic violence shelters
- Individuals who are unable to care for their children due to physical or emotional conditions, or unavailable due to participation in a court-ordered community service or drug treatment program
- Individuals who are currently receiving full-time DES child care assistance who enroll in a full-time education or employment training program submit a work requirement waiver to DES.

DES Child Care Assistance Program 2

Child care assistance is also available for grandparents and guardians when the following criteria are met:

- When the grandparent or guardian can provide verification of relationship or Legal guardianship to the child.
- When the grandparent or guardian is engaged in an eligible activity.

Only income received on behalf of the child is considered.

A child care application and verification of relationship or guardianship and eligible activity are required.

DES Child Care Assistance Program 3

Child care assistance is available for other individuals and children in certain circumstances, without regard to income, for the following:

- Referrals from the Arizona Department of Child Safety or Tribal Child Welfare programs
- Referrals from a DES Jobs Program
- DES Cash Assistance recipients
 - Grant Diversion program for job search
 - A child care application is required.
 - TANF recipients who are employed
 - A child care application and verification of employment are required.

Child Care Application Process

Individuals seeking child care assistance submit the following to a local office:

- A completed [Application for Child Care Assistance](#) / [Spanish Application for Child Care Assistance](#)
- Proof of identity for the applicant
- Proof of U.S. Citizenship or Qualified Immigrant Status for all children needing care
- Selected DES Child Care Provider

 des.az.gov/services/child-and-family/child-care/how-apply-for-child-care-assistance

Child Care Application Process, cont.

Submit the following *verification of eligible activity* documents (as applicable) to a local office:

- If employed:
 - the most recent paycheck stub, or
 - if newly hired, an [Employment and Wage Verification Statement](#), or
 - if self-employed, monthly self-employment records or previous year income tax return
- If unable or unavailable to care, a completed [Unable/Unavailable Status form](#)
- If residing in a shelter, a completed [Verification of Shelter Case Plan](#)
- If a teen parent, proof of school attendance

🌐 des.az.gov/services/child-and-family/child-care/how-apply-for-child-care-assistance

Child Care Application Process, cont.2

Submit the following *additional verification* documents (as applicable) to a local office:

- Proof of unearned income, such as Social Security Income (SSI), Child Support, loans, etc.
- Proof of relationship or guardianship when the applicant is not the parent of the children needing care

When an Application for Child Care Assistance is **not** required:

- Referrals from a DES Jobs Program
- Referrals from the Arizona Department of Child Safety or Tribal Child Welfare programs

 des.az.gov/services/child-and-family/child-care/how-apply-for-child-care-assistance

Child Care Resource & Referral (CCR&R)

★ **As part of the Child Care Assistance application, parents must select a DES-approved child care provider**

Arizona's CCR&R helps families find the best options by providing information for their child care search and decision, including:

- Searchable registry of local child care programs
- State licensing rules and regulations
- Availability of child care assistance
- Quality child care indicators



 azccrr.com



1-800-308-9000

For More Information: Child Care Assistance

Find a local DES Child Care office to speak to a DES Eligibility Specialist for more information.



des.az.gov/find-your-local-office



des.az.gov/es/localizar-una-oficina



Tribal CCDF

- Participation in the Child Care and Development Fund (CCDF) allows Tribal governments the opportunity to design, implement, and support programs which are beneficial to the unique needs of Tribal citizens.
- Through the CCDBG Act, American Indian and Alaska Native (AI/AN) grantees receive no less than 2 percent of discretionary CCDF funding and up to 2 percent of mandatory CCDF funding.
- In Arizona, 13 Tribal Nations participate in CCDF.



Resource: [Administration for Children & Families \(ACF\): CCDF Tribes and Tribal Organizations](#)



DEPARTMENT OF ECONOMIC SECURITY
Your Partner For A Stronger Arizona

Tribal CCDF

Arizona Tribal CCDF Entities (June 2022):

1. Cocopah Indian Tribe
2. Fort McDowell Yavapai Nation
3. Gila River Indian Community
4. Hopi Tribe
5. Hualapai Tribe
6. Navajo Nation
7. Pascua Yaqui Tribe
8. Quechan Indian Tribe of The Fort Yuma Indian Reservation
9. Salt River Pima Maricopa Indian Community
10. San Carlos Apache Tribe
11. Tohono O'odham Nation
12. White Mountain Apache Tribe
13. Yavapai Apache Nation

DES Child Care Providers

- Statewide, there are appx 2,800 child care providers licensed or certified by the [Arizona Department of Health Services \(DHS\)](#)
 - Appx. 50% are contracted to serve DES families
- Current **average** DES Child Care Assistance paid **per child** for **all child care provider types** = \$1,085/month (April 2023).
 - ★ Figure includes enhanced **quality rates** paid to child care providers that have achieved: a three-, four-, or five-star rating by the First Things First Quality First program, national accreditation, or a Child Development Associate (CDA) credential for family child care providers.

Resources:

 [DES Reimbursement Rates for Child Care](#)

 [Become a DES Provider](#)

Becoming a DES Child Care Provider

There are 3 types of DES providers that care for families who receive DES child care assistance:

Certified Family Child Care Providers: DES certified family child care providers to care for up to four children at one time in their home for compensation.

Non-Certified Relative Providers: An NCRP provides child care services within the State of Arizona for members of their own family who are approved for DES child care, and are related by blood, marriage or by court decree.

DES Contracted Child Care Centers and Child Care Group Homes: Licensed Centers and Group Homes can contract with DES and receive financial reimbursement for providing child care to children eligible for DES child care assistance.

Resource:  [Become a DES Provider](#)

State CCDBG Quality Set-Aside Programs and Contracts

DES partners with community organizations and other state agencies to meet the CCDBG goals for children, families, and the child care workforce, including:

- Child Care Resource & Referral
- Preventing Suspension & Expulsion
- Professional Career Pathways Project
- CCDBG Training and Professional Development
- Quality Enhancement and Accreditation

Resources:

 [Professional Development for DES Child Care Providers](#)

 [Arizona Child Care Resource & Referral](#)

DES Child Care at Residential Shelter Contracts

- Children living in a homeless or domestic violence shelter and children referred from the Department of Child Safety are prioritized populations for DES Child Care eligibility.
- DES contracts with 3 residential shelters to provide high quality child care to children (as of June 2022):



Interested Programs - Contact: ccaprogramdevelopmentunit@azdes.gov

Arizona Child Care Recovery Plan

\$1.3 billion in new funding dedicated to Arizona's Child Care and Development Fund through the federal CARES Act, CRRSA, and ARPA (July 1, 2021-September 30, 2024).

The Division of Child Care is supporting Arizona's child care stabilization and recovery with strategic investments to increase access to high quality early childhood care and education.

Updates:  [Child Care Grants & Scholarships](#)

Division of Child Care

Supporting the well-being and economic independence of Arizona's families by providing quality child care assistance and services.

Visit us at: des.az.gov/services/child-and-family/child-care