



DEPARTMENT OF ECONOMIC SECURITY

*Your Partner For A Stronger Arizona*



# Division of Child Care

# Division of Child Care

*Supporting the well-being and economic independence of Arizona's families by providing quality child care assistance and services.*

## *Administrations*

- Family Support and Eligibility
- Provider Network Support
- Early Childhood Education Quality and Systems Building
- Performance and Strategic Initiatives
- Business Operations Support
- Systems - Data & Technology

## *Integrated Support*

- Office of the Inspector General
  - Office of Professional Development
  - Tribal Affairs
  - Communications
  - Human Resources
  - Community Engagement
-

# Division of Child Care

*Supporting the well-being and economic independence of Arizona's families by providing quality child care assistance and services.*

Legal Authority: The 2014 Child Care and Development Block Grant recognized that child care providers play a critical role in early childhood brain development.

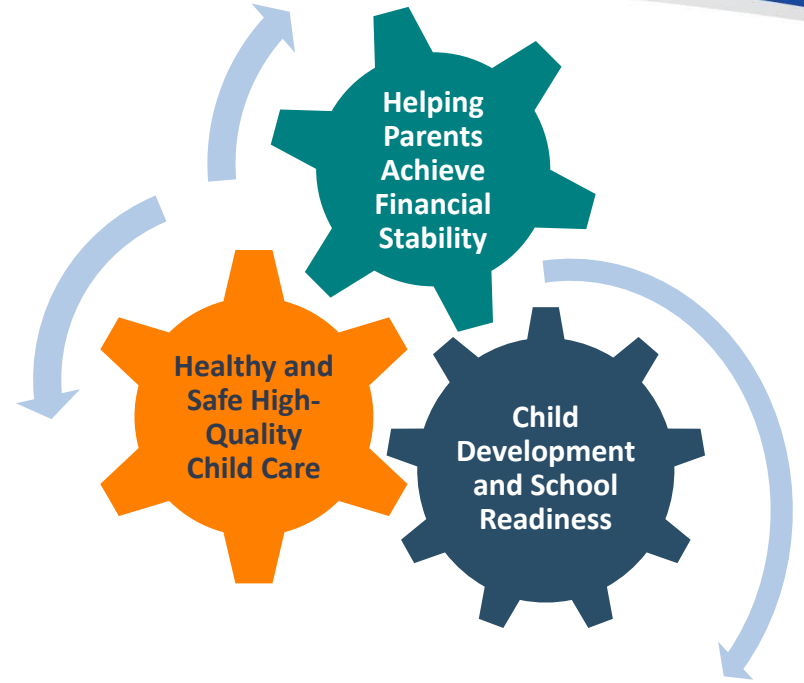
States are required to ensure equal access to quality care, focused on child development & well-being.

- ★ **In Arizona, we accomplish this through State, Tribal & Community Coordination, Child Care Assistance, DHS Licensing Standards, the DES Provider Registration Agreement, Certified Family Providers, and Quality Set Aside.**
-

# Child Care Development Fund

## Major Provisions of CCDF:

- Protect the **health and safety** of children in child care.
- Help parents make **informed choices** and access information to support child development.
- Support **equal access** to stable, high **quality** child care for children from low income families.
- Enhance the quality of the early childhood and child care **workforce**.



# DES Child Care Assistance Program

**Child care assistance is available for families at or below 165% of the Federal Poverty Level (FPL) with children 12 years of age or younger:**

- Low-income working families
  - Full or part-time employment
  - Self-employment
- Teen parents enrolled in high school, GED, ESOL, or remedial education programs
- Residents of homeless or domestic violence shelters
- Individuals who are unable to care for their children due to:
  - A physical, mental or emotional condition
- Individuals who are unavailable to care for their children due to:
  - Participation in court-ordered community service
  - Participation in a drug treatment program

**A child care application is required.  
Verification of income and activity are required.**

---

# DES Child Care Assistance Program

**Child care assistance is available for other individuals and children in certain circumstances, without regard to income, for the following:**

- Referrals from the Arizona Department of Child Safety or Tribal Child Welfare programs
- Referrals from a DES Jobs Program
- DES Cash Assistance recipients
  - Grant Diversion program for job search
    - A child care application is required.
  - TANF recipients who are employed
    - A child care application and verification of employment are required.

**Child care assistance is also available for grandparents and guardians when the following criteria are met** (*Only income received on behalf of the child is considered for child care assistance*):

- When the parent of the child is not living in the same home
  - When the grandparent or guardian is engaged in an eligible activity
-

# DES Child Care Provider Network

**Child Care Providers contract with DES to provide services to eligible children/families for financial reimbursement**

- Statewide, there are about 2,800 DHS licensed/certified child care providers.
    - Appx. 50% are contracted to serve DES families
  - Average assistance and reimbursement to child care providers is approximately \$900 per month per child
  - Nearly 30% of all children authorized for DES child care assistance are referred by the Department of Child Safety
-

# Becoming a DES Child Care Provider

There are 3 types of DES providers that care for families who receive DES child care assistance:

- **Certified Family Child Care Providers:** DES certified family child care providers to care for up to four children at one time in their home for compensation.
  - **Non-Certified Relative Providers:** An NCRP provides child care services within the State of Arizona for members of their own family who are approved for DES child care, and are related by blood, marriage or by court decree.
  - **DES Contracted Child Care Centers and Child Care Group Homes:** DHS Licensed Centers and Certified Group Homes can contract with DES and receive financial reimbursement for providing child care to children eligible for DES child care assistance.
-



# DES Child Care Resource & Referral

Families receiving DES child care assistance must choose a DES provider for child care.

Arizona's Child Care Resource & Referral helps families find the best care options for their children by providing information for their child care search and decision, including:

- Searchable registry of local child care programs
- State licensing rules and regulations
- Availability of child care assistance
- Quality child care indicators



**Child Care Resource & Referral: Visit [azccrr.com](http://azccrr.com)**

**OR call: 1.800.308.9000**

---

# Tribal CCDF Planning

- Participation in the Child Care and Development Fund (CCDF) allows Tribal governments the opportunity to design, implement, and support programs which are beneficial to the unique needs of Tribal citizens.
- Through the CCDBG Act, American Indian and Alaska Native grantees receive no less than 2 percent of discretionary CCDF funding and up to 2 percent of mandatory CCDF funding.
- In Arizona, there are [13 Tribal CCDF Grantees/Lead Agencies](#)

Arizona's Division of Child Care is available to support Tribal Lead Agencies.

Please contact: [tlira@azdes.gov](mailto:tlira@azdes.gov) for more information.

---

# Contact Information

Division of Child Care:

**Traci Lira [TLira@azdes.gov](mailto:TLira@azdes.gov) 602-361-6471**

**Coming Soon!**

DES Tribal Liaison for Child Care and Early Intervention (AzEIP)

*Contact Jocelyn Beard for more information*

---