

ARIZONA REENTRY PROGRAM

On March 27, 2017, the Department of Economic Security (DES) and the Department of Corrections (ADC) opened the first Second Chance Center (SCC) targeted at serving inmates who were deemed most likely to recidivate. DES and ADC staff work together to remove barriers for SCC participants through employment readiness services and access to medical and nutritional services to prepare them for successful reentry.

Facts about the Arizona State Prison system and the second chance program



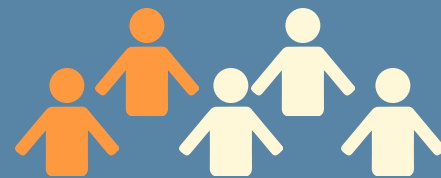
Over 42,000 people are incarcerated in Arizona state prisons, with 1,500 released each month



Participating inmates learn basic computer and workforce skills, resume/interview tips and on-site vocational training



3,634 inmates have completed the Second Chance Center program resulting in more than 2,842 job placements (78.2%)*



2 out of 5 former inmates will return to prison within the first three years post-release for a 41% recidivism rate

Reentry Centers

*Data gathered from inception (March 2017 - September 2019)

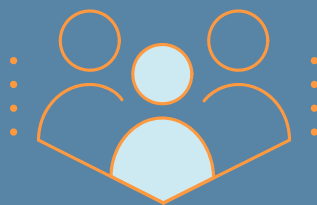
Second Chance Centers



These centers are inside Arizona prisons

- Piestewa: Perryville Prison
- Manzanita: Tucson Prison Complex
- Eagle Point: Lewis Prison

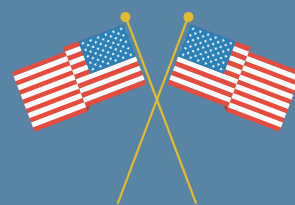
Community Based Resource Centers



These centers serve parolees, as well as walk ins at certain locations; 1,481 parolees have been placed into jobs

- Phoenix Parole Office
- Mesa Parole Office
- NATIVE HEALTH
- Maricopa Reentry Center
- Pima Reentry Center

Veterans Center



This center serves inmates who are veterans

- Whetstone Reentry Center

Visit des.az.gov/services/employment/reentry-services for more information



A proud partner of the americanJobcenter network

Equal Opportunity Employer / Program • Auxiliary aids and services are available upon request to individuals with disabilities • To request this document in alternative format or for further information about this policy, contact your local office; TTY/TDD Services: 7 1 1