

HOURS OF OPERATION, WEBSITE AND TELEPHONE NUMBERS

Website www.azui.com to file an initial claim application and for general questions.

Customer Service

Phoenix Area (602) 364-2722
Tucson Area (520) 791-2722
Toll Free Number 1-877-600-2722
Monday-Friday 8:00 a.m. - 5:00 p.m.
Mountain Standard Time

TIPS Line

To obtain information regarding your last benefit check:

Phoenix Area (602) 417-3800
Tucson Area (520) 884-8477
Toll Free Number 1-877-766-8477
TTY/TDD 7-1-1
Internet www.azui.com

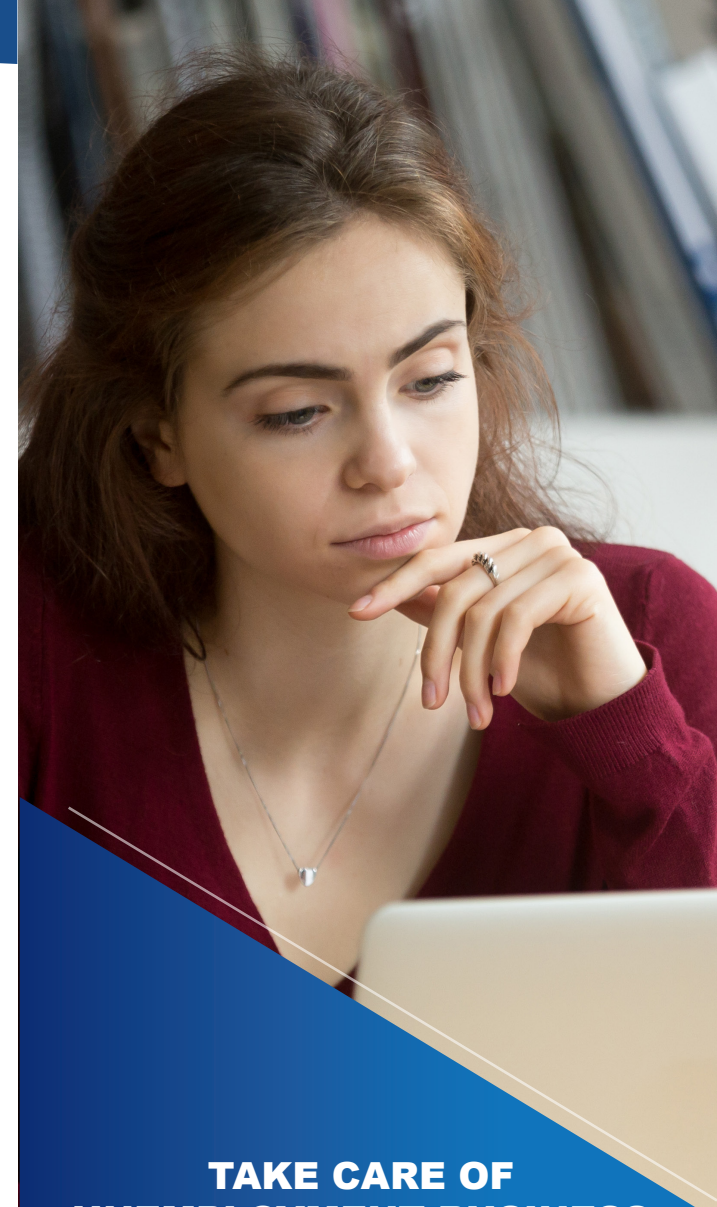
Use the Internet for:

- Initial claim applications
- Weekly claim certifications
- Information and assistance



Equal Opportunity Employer / Program • Auxiliary aids and services are available upon request to individuals with disabilities • To request this document in alternative format or for further information about this policy, contact your local office; TTY/TDD Services: 7-1-1 • Disponible en español en línea o en la oficina local.

UIB-1241A PAMENG (8-19)



**TAKE CARE OF
UNEMPLOYMENT BUSINESS
BY THE INTERNET OR
TELEPHONE**



BENEFITS

HOW TO PREPARE TO FILE FOR UNEMPLOYMENT BENEFITS

If you have worked in Arizona at any time during the past 18 months and are unemployed or working part time, you may be eligible to file an unemployment insurance claim.

The following information is required to file a claim:

- Your Social Security Number.
- AZ Driver's License or AZ State Issued ID (**Note:** you may still complete your application without these two items).
- Your mailing address, city, state and ZIP code.
- If you live in Arizona, the county where you reside.
- The names, addresses, and phone numbers of all your employers for the last 18 months.
- The last day you worked immediately prior to filing your claim.
- If you received severance, vacation, holiday or payment for unused sick pay: give the amount (before deductions) and the date it was paid to you.
- Alien Registration Number, if applicable.
- If you are collecting a pension (other than Social Security), you will need the start date of the pension and the monthly benefit amount.

HOW TO FILE AN UNEMPLOYMENT INSURANCE CLAIM APPLICATION ON THE INTERNET

You may file your initial claim, additional claim, or you may re-open an existing claim online by visiting our secure website www.azui.com. The website is available from 12:01 A.M. Sunday to 5 P.M. Friday each week.

YOUR INITIAL CLAIM APPLICATION IS EFFECTIVE THE SUNDAY OF THE WEEK IN WHICH YOU FILE YOUR CLAIM

Unemployment Insurance Fraud is a Felony!

If you receive benefits as a result of making false statements or failing to disclose material facts, additional penalties may also be imposed which can include restitution and felony charges. Overpayment benefits cannot be offset from future benefits and may be recovered by intercepting your Arizona or Federal income tax refunds.

INTERNET WEEKLY FILING

In order to receive benefits, you must file a weekly continued claim regardless of your eligibility status.

To file your weekly continued claim, visit our secure website www.azui.com.

The website is available from 12:01 A.M. Sunday to 6 P.M. Friday (except on certain [State Holidays](#)).

Everyone must begin filing weekly continued claims starting the first week after filing an unemployment insurance benefit claim. All weekly continued claims for unemployment insurance filed against Arizona are for a calendar week. A calendar week is a period of seven consecutive days beginning at 12:01 a.m. on Sunday and ending at midnight on the following Saturday. You cannot file your next weekly continued claim until the prior week has ended. If you do not have access to the internet you may visit your local employment service office or the nearest public library and use a computer to file your weekly continued claim.

