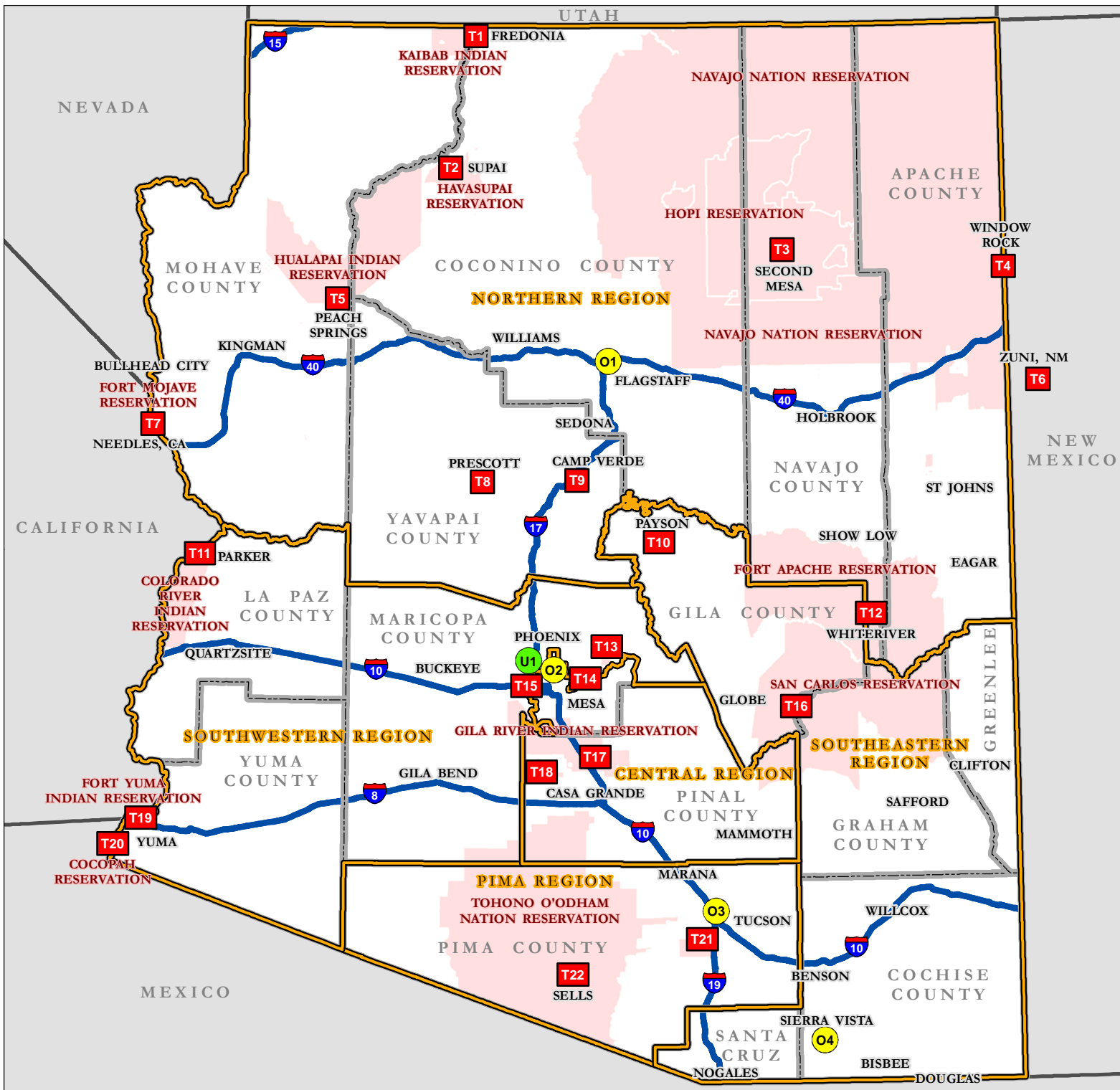




DCYF Regional Offices And Tribal Social Service Offices

Arizona



Subject Data
(See page 7 for details)

- DCYF Regional Office
- ICWA Unit Office
- Tribal Social Service Office

Other Features

- Reservation
- DCYF Region
- County Boundary
- State Boundary
- Interstate

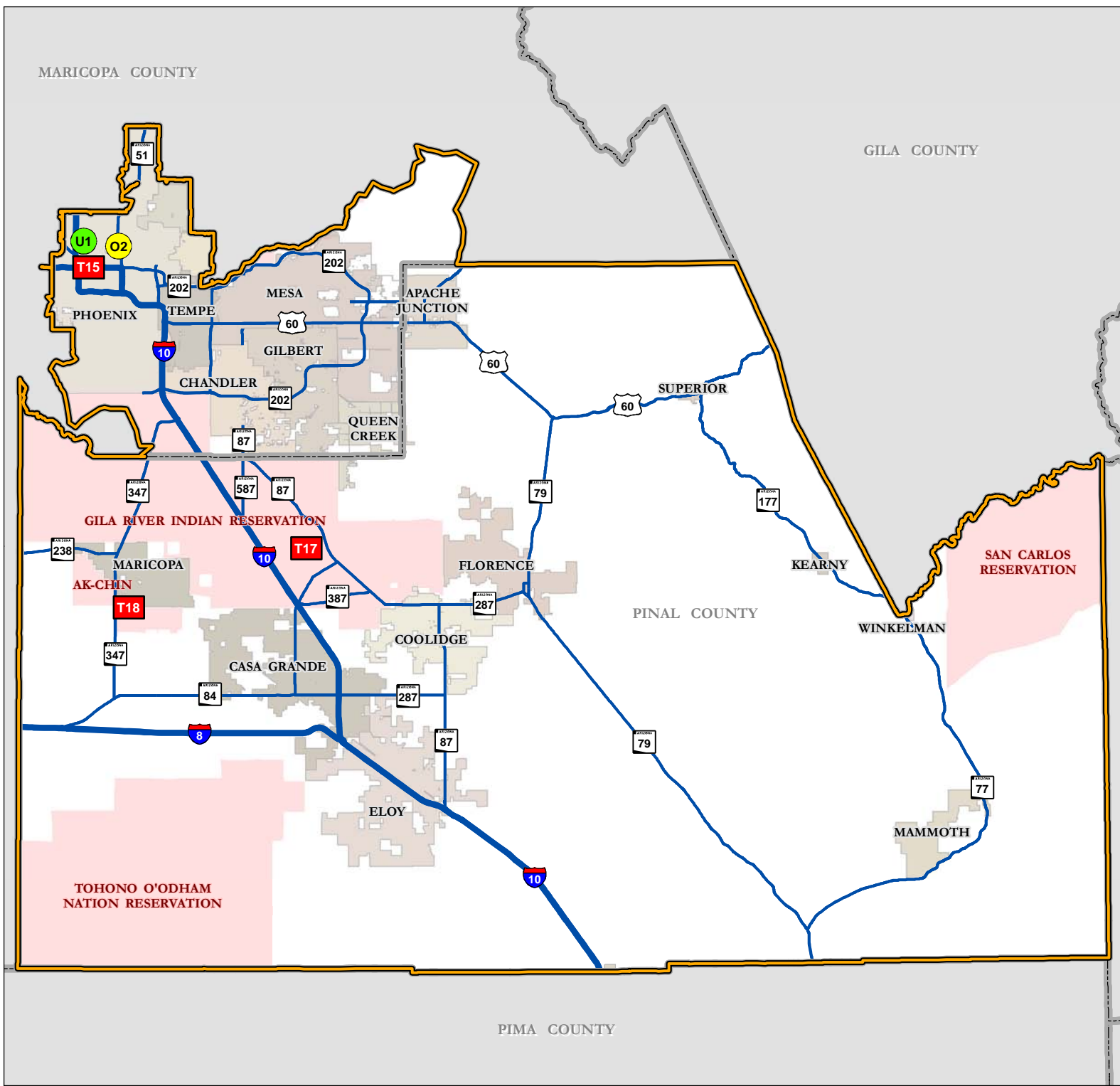
Map prepared by the Arizona Department of Economic Security (DES) Geographic Information Systems Team in August 2013. (GIS Project ID: 113023)

Sources: DES, 2013 (Facilities, Tribal Offices, DCYF Regions); Arizona State Land Department, 2013 (Cities); Arizona Department of Transportation, 2011 (Highways); US Census, 2012 (Counties, Reservations, States)



DCYF Regional Offices And Tribal Social Service Offices

DCYF Central Region



Subject Data
(See page 7 for details)

- DCYF Regional Office
- ICWA Unit Office
- Tribal Social Service Office

Other Features

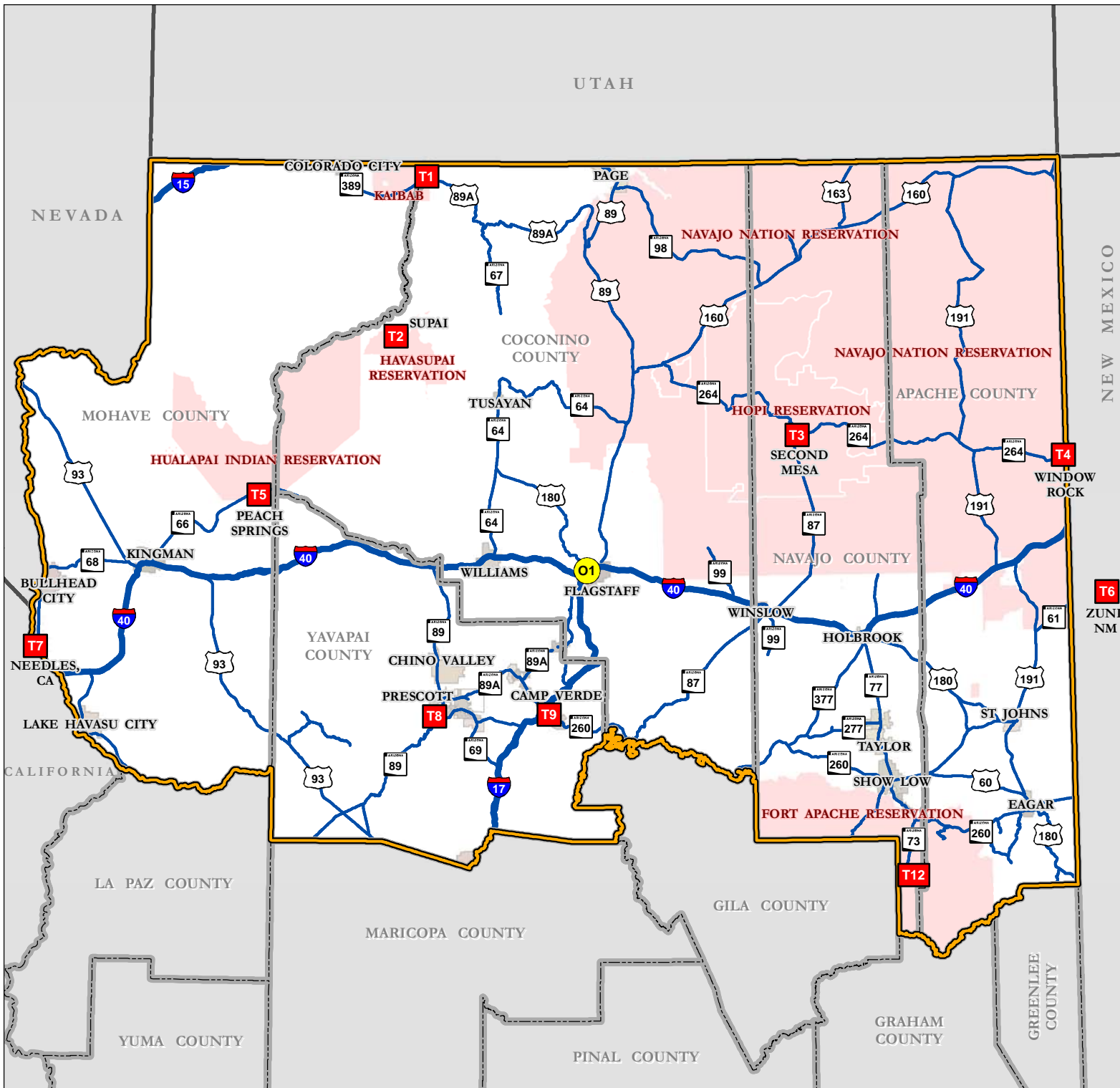
- Reservation
- DCYF Region
- County Boundary
- ↘↗ Interstate
- ↘ US or State Highway

Map prepared by the Arizona Department of Economic Security (DES) Geographic Information Systems Team in August 2013. (GIS Project ID: 113023)
Sources: DES, 2013 (Facilities, Tribal Offices, DCYF Regions); Arizona State Land Department, 2013 (Cities); Arizona Department of Transportation, 2011 (Highways); US Census, 2012 (Counties, Reservations, States)



DCYF Regional Offices And Tribal Social Service Offices

DCYF Northern Region



Subject Data
(See page 7 for details)

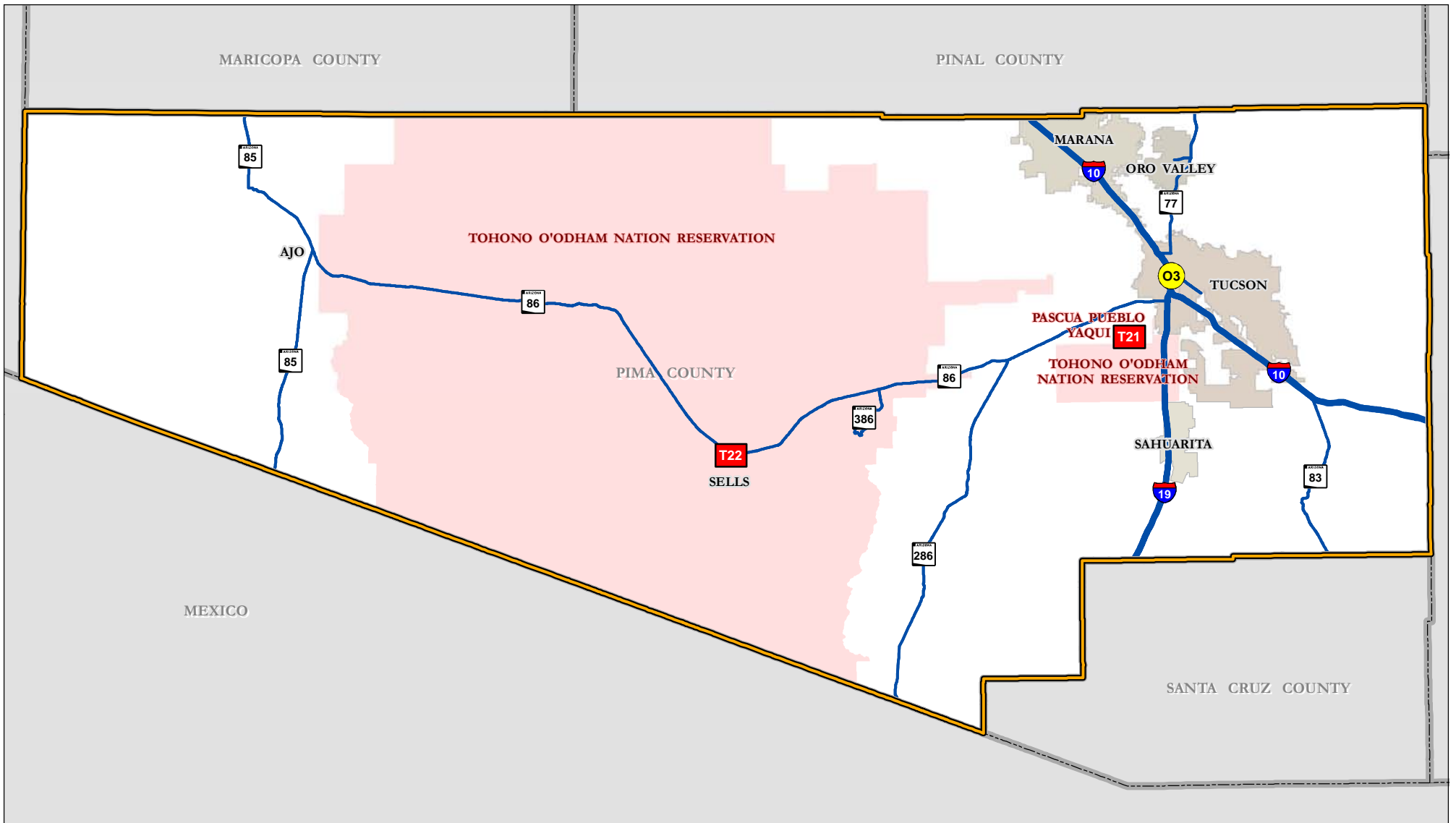
- DCYF Regional Office
- Tribal Social Service Office

Other Features

- Reservation
- DCYF Region
- State Boundary
- County Boundary
- ↘↗ Interstate
- ↘ US or State Highway

Map prepared by the Arizona Department of Economic Security (DES) Geographic Information Systems Team in August 2013. (GIS Project ID: 113023)

Sources: DES, 2013 (Facilities, Tribal Offices, DCYF Regions); Arizona State Land Department, 2013 (Cities); Arizona Department of Transportation, 2011 (Highways); US Census, 2012 (Counties, Reservations, States)



DCYF Regional Offices And Tribal Social Service Offices

DCYF Pima Region

Subject Data
(See page 7 for details)

- DCYF Regional Office
- Tribal Social Service Office

Other Features

- Reservation
- DCYF Region
- County Boundary
- ↗ Interstate
- ↗ US or State Highway

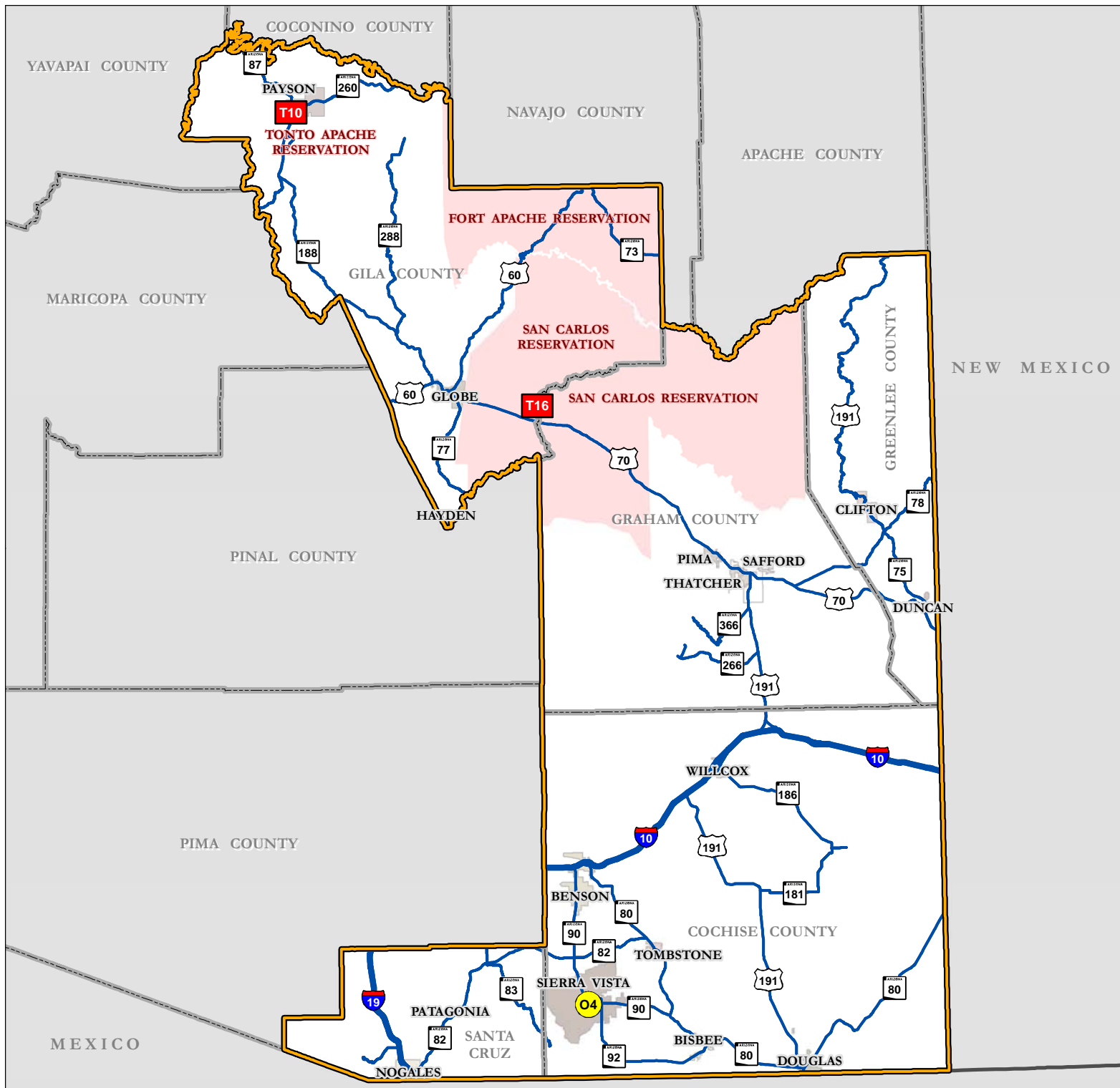
Map prepared by the Arizona Department of Economic Security (DES) Geographic Information Systems Team in August 2013.
(GIS Project ID: 113023)

Sources: DES, 2013 (Facilities, Tribal Offices, DCYF Regions); Arizona State Land Department, 2013 (Cities); Arizona Department of Transportation, 2011 (Highways); US Census, 2012 (Counties, Reservations, States)



DCYF Regional Offices And Tribal Social Service Offices

DCYF Southeastern Region



Subject Data
(See page 7 for details)

- DCYF Regional Office
- Tribal Social Service Office

Other Features

- Reservation
- DCYF Region
- State Boundary
- County Boundary
- ↗ Interstate
- ↘ US or State Highway

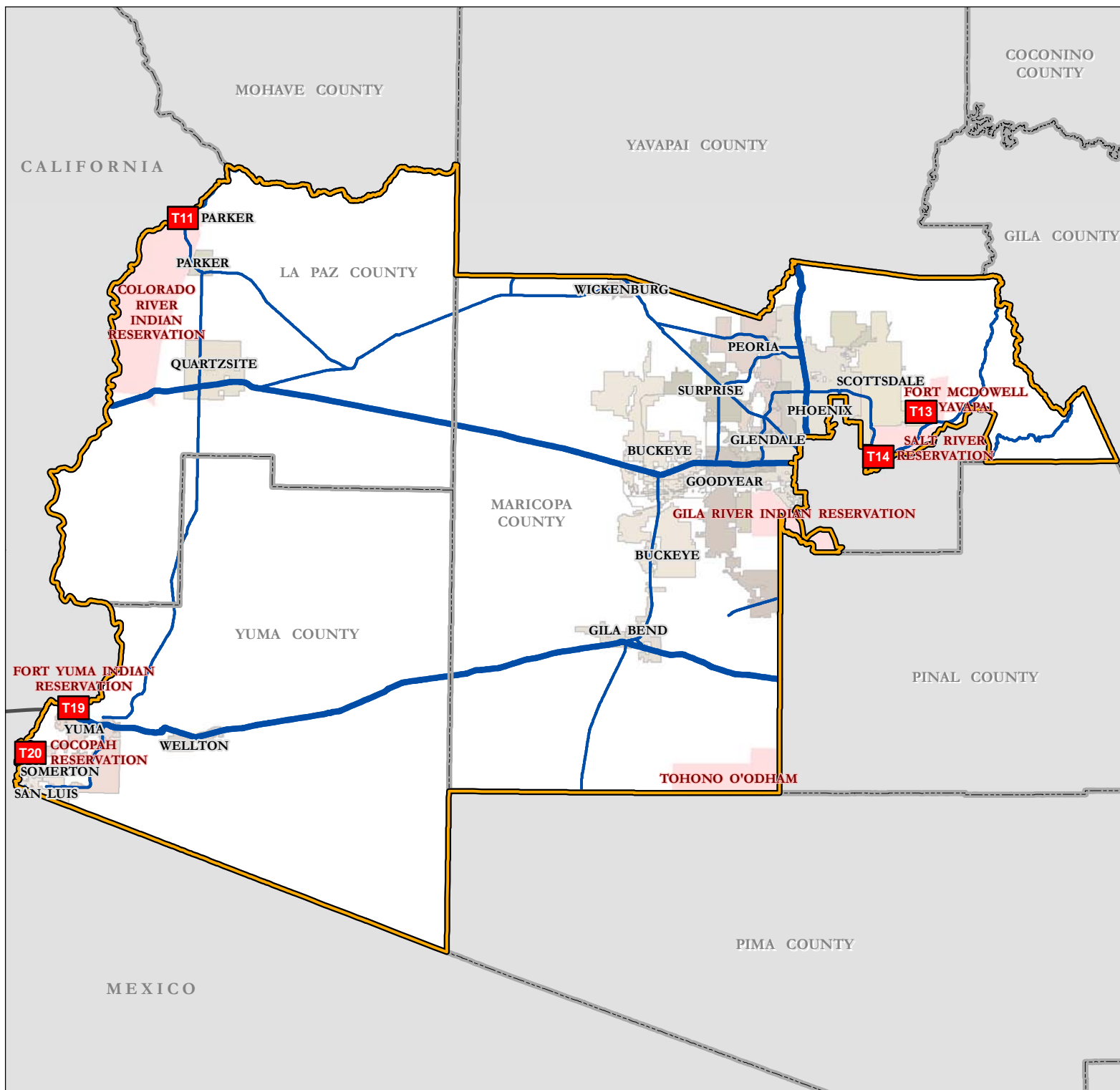
Map prepared by the Arizona Department of Economic Security (DES) Geographic Information Systems Team in August 2013. (GIS Project ID: 113023)

Sources: DES, 2013 (Facilities, Tribal Offices, DCYF Regions); Arizona State Land Department, 2013 (Cities); Arizona Department of Transportation, 2011 (Highways); US Census, 2012 (Counties, Reservations, States)



DCYF Regional Offices And Tribal Social Service Offices

DCYF Southwestern Region



Subject Data
(See page 7 for details)

- DCYF Regional Office
- Tribal Social Service Office

Other Features

- Reservation
- DCYF Region
- County Boundary
- State Boundary
- ≡ Interstate
- ≡ US or State Highway

Map prepared by the Arizona Department of Economic Security (DES) Geographic Information Systems Team in August 2013. (GIS Project ID: 113023)

Sources: DES, 2013 (Facilities, Tribal Offices, DCYF Regions); Arizona State Land Department, 2013 (Cities); Arizona Department of Transportation, 2011 (Highways); US Census, 2012 (Counties, Reservations, States)

DCYF Region Offices and Tribal Social Service Offices

| Map Label | Office Name / Tribe | Address | City | ZIP Code | DCYF Region |
|---------------------------------------|--|------------------------------|----------------------|----------|--------------|
| ICWA Unit Office | | | | | |
| U1 | ICWA Unit Office | 3310 N. 19th Ave. | Phoenix | 85015 | Central |
| DCYF Regional Offices | | | | | |
| O1 | DCYF Region Office (Northern Region) | 220 N. Leroux St. | Flagstaff | 86001 | Northern |
| O2 | DCYF Region Office (Central and Southwestern Region) | 3221 N. 16th St. | Phoenix | 85016 | Central |
| O3 | DCYF Region Office (Pima Region) | 400 W. Congress St. | Tucson | 85701 | Pima |
| O4 | DCYF Region Office (Southeastern Region) | 333 W. Wilcox Dr. | Sierra Vista | 85635 | Southeastern |
| Tribal Social Services Offices | | | | | |
| T1 | Kaibab-Paiute Tribe | HC 65 Box 2 | Fredonia | 86022 | Northern |
| T2 | Havasupai Tribe | P. O. Box 10 | Supai | 86435 | Northern |
| T3 | Hopi Tribe (Hopi Guidance Center/ Social Services) | PO Box 68 | Second Mesa | 86043 | Northern |
| T4 | Navajo Nation (Navajo Children and Family Services) | P.O. Box 1930 | Window Rock | 86515 | Northern |
| T5 | Hualapai Tribe | PO Box 480 | Peach Springs | 86434 | Northern |
| T6 | Pueblo of Zuni | PO BOX 339 | Zuni (New Mexico) | 87327 | Out of State |
| T7 | Fort Mojave Tribe | 500 Merriman Ave. | Needles (California) | 92363 | Out of State |
| T8 | Yavapai- Prescott Indian Tribe | 503 E. Merritt | Prescott | 86301 | Northern |
| T9 | Yavapai Apache Tribe | 2400 W Datsi St. . | Camp Verde | 86322 | Northern |
| T10 | Tonto Apache Tribe | TAR #30 | Payson | 85541 | Southeastern |
| T11 | Colorado River Indian Tribes | 12302 Kennedy DR | Parker | 85344 | Southwestern |
| T12 | White Mountain Apache Tribe (WMAT Social Service) | Po BOX 1870 | Whiteriver | 85941 | Northern |
| T13 | Fort Mc Dowell Yavapai Nation (Wassaja Family Services) | P.O. BOX 17779 | Fountain Hills | 85269 | Southwestern |
| T14 | Salt River-Pima- Maricopa Indian Tribe (SRPMIC Social Services Department) | 10005 E. Osborn Road | Scottsdale | 85256 | Southwestern |
| T15 | ITCA | 2214 N Central Ave Suite 100 | Phoenix | 85004 | Central |
| T16 | San Carlos Apache Tribe (Tribal Social Services) | POB 0 | San Carlos | 85550 | Southeastern |
| T17 | Gila River Indian Community (Tribal Social Services) | PO Box 427 | Sacaton | 85147 | Central |
| T18 | Ak-Chin Indian Community | 42507 W. Peters & Nail Road | Maricopa | 85139 | Central |
| T19 | Fort Yuma Quechan Tribe | PO Box 1899 | Yuma | 85366 | Southwestern |
| T20 | Cocopah Tribe | 14515 S. Veterans DR. | Somerton | 85350 | Southwestern |
| T21 | Pascua Yaqui Tribe (Social Services Division Director) | 4730 W. Calle Tetakusim | Tucson | 85747 | Pima |
| T21 | Pascua Yaqui Tribe (ICWA Assistant Attorney General) | 7474 S. Camino De Oeste | Tucson | 85757 | Pima |
| T22 | Tohono O'odham Nation | PO Box 810 | Sells | 85634 | Pima |