

# PATHWAYS TO THE FUTURE

## Career and Technical Education

Are you ready to jumpstart a career or explore interesting career options?  
Career and Technical Education (CTE) may be just what you need.

### WHAT IS CTE?

CTE includes programs and classes that combine rigorous academic, technical, and skills education to prepare students for today's workplace. In high school, students can take CTE classes as electives.

High school CTE students can explore career options while gaining real world skills and practical knowledge. CTE programs are organized into 16 career clusters, representing 79 career pathways to help students succeed.

- Agriculture, Food & Natural Resources
- Architecture & Construction
- Arts, A/V Technology & Communications
- Business Management & Administration
- Education & Training
- Finance
- Government & Public Administration
- Health Science
- Hospitality & Tourism
- Human Services
- Information Technology
- Law, Public Safety, Corrections & Security
- Manufacturing
- Marketing
- Science, Technology, Engineering & Mathematics
- Transportation, Distribution & Logistics

### 16 Career Clusters for CTE Programs

#### NATIONAL CAREER CLUSTERS<sup>®</sup>

FRAMEWORK



AGRICULTURE, FOOD & NATURAL RESOURCES



ARCHITECTURE & CONSTRUCTION



ARTS, A/V TECHNOLOGY & COMMUNICATIONS



BUSINESS MANAGEMENT & ADMINISTRATION



EDUCATION & TRAINING



FINANCE



GOVERNMENT & PUBLIC ADMINISTRATION



HEALTH SCIENCE



HOSPITALITY & TOURISM



HUMAN SERVICES



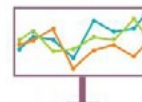
INFORMATION TECHNOLOGY



LAW, PUBLIC SAFETY, CORRECTIONS & SECURITY



MANUFACTURING



MARKETING



SCIENCE, TECHNOLOGY, ENGINEERING & MATHEMATICS



TRANSPORTATION, DISTRIBUTION & LOGISTICS



You can use CTE in high school to find your passion while developing a strong academic foundation and gaining valuable, real-world technical skills.

# IS CTE FOR ME?

Whether you are heading to college or the workforce after high school, CTE can prepare you with the valuable technical, academic, and employability skills you will need to succeed!

- **Career-focused students** can gain skills and practical knowledge in a real-world, applied context. CTE students receive hands-on training, mentoring, and internship opportunities from businesses right in their community.
- **College-bound students** can get job experiences to help them define their career plans, identify an appropriate course of study, and help pay for tuition. And CTE doesn't have to end after high school; it can also continue on through community college!



## WHAT'S NEXT?



Make a plan to include CTE in your ECAP and IEP plans.

- ▶ **ECAP:** First, talk to your counselor about incorporating CTE classes into your Education and Career Action Plan (ECAP). Find a program that sparks your interest and opens doors to in demand careers.
- ▶ **IEP:** Next, discuss with your IEP team what types of support or accommodations you might need to include CTE in your transition plan. Any accommodations provided in your Individualized Education Program (IEP) will apply to these courses as well!

## LEARN MORE

### Why Is Career and Technical Education (CTE) Important for Employment Success for Students With Disabilities?

#### College and Career Readiness Gaps Persist for Students With Disabilities

Persons with a disability are less likely to graduate on-time, attend college or be employed compared to those without a disability. The disparity in employment between those with or without a disability continues for those who attend college.

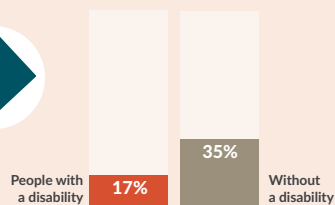
#### Lower on-time high school graduation rate



Source: U.S. Department of Education, OESE, Consolidated State Performance Report, 2010-11, 2011-12, and 2012-13

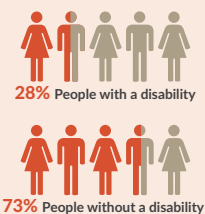
#### Less likely to hold a bachelor's degree

Graduated college with a bachelor's degree or higher



Source: U.S. Census Bureau, 2015 Current Population Survey

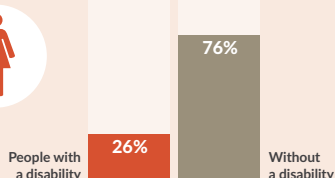
#### Lower employment rates: working-age



Sources: *The Employment Situation*, U.S. Bureau of Labor Statistics, 2017; and *Persons With a Disability: Labor Force Characteristics*, U.S. Bureau of Labor Statistics, 2017. Retrieved from <https://www.bls.gov/news.release/disabl.nr0.htm>

#### Lower employment rates: bachelor's degree

Employed people with a bachelor's degree or higher in 2016



#### CTE Participation Improves College and Career Readiness Outcomes

Students with a disability who are CTE concentrators\* have better outcomes.



3% fewer unexcused absences



5% more likely to graduate high school on time



20% more likely to be employed after graduation

\*CTE concentrator is a student who has taken at least four courses of CTE in high school.

Source: *Career and Technical Education, Inclusion, and Postsecondary Outcomes for Students with Disabilities*, CALDER Center, 2017.

Download full report: <http://bit.ly/2CJVn9w>

## Who We Are

A staff of six assists the all-volunteer Arizona Developmental Disabilities Planning Council, which is made up of individuals with disabilities, family members, professional stakeholders, and state agency representatives appointed by the Governor of Arizona. The 23-member Council meets five times a year to discuss issues and vote on which projects to support by allocating our federal funds. The Arizona Developmental Disabilities Planning Council is supported by the Administration for Community Living of the Department of Health and Human Services as part of an award totaling \$1,500,930 with 0% from non-governmental sources.

