



---

DEPARTMENT OF ECONOMIC SECURITY

---

*Your Partner For A Stronger Arizona*

State of Arizona

Department of Economic Security

Family Assistance Administration

Statistical Bulletin

January, 2012

Phone: (602) 542-3678

<https://www.azdes.gov/appreports.aspx>

\*\*\*\* STATISTICAL BULLETIN \*\*\*\*  
ARIZONA DEPARTMENT OF ECONOMIC SECURITY  
FAMILY ASSISTANCE ADMINISTRATION  
BOX 6123, PHOENIX, ARIZONA 85005  
PHONE (602) 542-3678

JANUARY 2012

THIS ISSUE OF THE STATISTICAL BULLETIN COMPARES JANUARY 2012 DATA FOR EACH OF THE INDICATED PROGRAMS WITH THE INFORMATION FOR DECEMBER 2011 AND JANUARY 2011. STATEWIDE SUMMARIES OF ACTIVITY WITHIN EACH OF THE SPECIFIC PROGRAMS FOR THIS REPORT PERIOD ARE DISCUSSED BELOW. THE TABLES COMPARE CURRENT AND PRIOR MONTH DATA. DISTRICT AND COUNTY COMPARISONS ARE PROVIDED WITHIN THIS BULLETIN

TANF SUMMARY

COMPARING TO DECEMBER 2011, JANUARY 2012 CASES INCREASED BY 21 (0.12%) TO 17,533. RECIPIENTS INCREASED BY 132 (0.33%) TO 39,748. PAYMENTS INCREASED BY \$9,757 (0.27%) TO \$3,658,544. AVERAGE PAYMENT PER CASE INCREASED BY \$0.31 (0.15%) TO \$0.00. PAYMENT PER RECIPIENT DECREASED BY \$0.06 (0.07%) TO \$92.04.

COMPARING TO JANUARY 2011, JANUARY 2012 CASES DECREASED BY 1,763 (9.14%). RECIPIENTS DECREASED BY 4,052 (9.25%). TOTAL PAYMENTS DECREASED BY \$437,902 (10.69%). THE AVERAGE PAYMENT PER CASE DECREASED BY \$3.63 (1.71%). THE AVERAGE PAYMENT PER RECIPIENT DECREASED BY \$1.49 (1.59%).

CASH ASSISTANCE (CA)

COMPARING TO DECEMBER 2011, JANUARY 2012 CASES INCREASED BY 4 (0.02%) TO 16,391. RECIPIENTS INCREASED BY 54 (0.15%) TO 36,462. PAYMENTS INCREASED BY \$5,298 (0.15%) TO \$3,476,069. AVERAGE PAYMENT PER CASE INCREASED BY \$0.27 (0.13%) TO \$212.07. PAYMENT PER RECIPIENT INCREASED BY \$0.00 (0.00%) TO \$95.33.

COMPARING TO JANUARY 2011, JANUARY 2012 CASES DECREASED BY 1,823 (10.01%). RECIPIENTS DECREASED BY 4,194 (10.32%). TOTAL PAYMENTS DECREASED BY \$423,735 (10.87%). THE AVERAGE PAYMENT PER CASE DECREASED BY \$2.04 (0.95%). THE AVERAGE PAYMENT PER RECIPIENT DECREASED BY \$0.59 (0.62%).

CASH ASSISTANCE UNEMPLOYED PARENT PROGRAM (CA-UP)

COMPARING TO DECEMBER 2011, JANUARY 2012 CASES INCREASED BY 15 (3.45%) TO 450. RECIPIENTS INCREASED BY 50 (2.86%) TO 1,800. PAYMENTS INCREASED BY \$3,476 (2.73%) TO \$130,854. AVERAGE PAYMENT PER CASE DECREASED BY \$2.03 (0.69%) TO \$290.79. PAYMENT PER RECIPIENT DECREASED BY \$0.09 (0.12%) TO \$72.70.

COMPARING TO JANUARY 2011, JANUARY 2012 CASES DECREASED BY 125 (21.74%). RECIPIENTS DECREASED BY 282 (13.54%). TOTAL PAYMENTS DECREASED BY \$29,532 (18.41%). THE AVERAGE PAYMENT PER CASE INCREASED BY \$11.86 (4.25%). THE AVERAGE PAYMENT PER RECIPIENT DECREASED BY \$4.33 (5.63%).

CASH ASSISTANCE WITH GRANT UNDER \$100 (CA-MOE)

COMPARING TO DECEMBER 2011, JANUARY 2012 CASES DECREASED BY 2 (0.29%) TO 679. RECIPIENTS INCREASED BY 11 (0.77%) TO 1,435. PAYMENTS INCREASED BY \$692 (1.38%) TO \$50,744. AVERAGE PAYMENT PER CASE INCREASED BY \$1.23 (1.67%) TO \$74.73. AVERAGE PAYMENT PER RECIPIENT INCREASED BY \$0.21 (0.60%) TO \$35.36.

COMPARING TO JANUARY 2011, JANUARY 2012 CASES INCREASED BY 201 (42.05%). RECIPIENTS INCREASED BY 451 (45.83%). TOTAL PAYMENTS INCREASED BY \$16,226 (47.01%). THE AVERAGE PAYMENT PER CASE INCREASED BY \$2.52 (3.49%). THE AVERAGE PAYMENT PER RECIPIENT INCREASED BY \$0.28 (0.80%).

CASH ASSISTANCE UNEMPLOYED PARENT PROGRAM WITH GRANT UNDER \$100 (CA-UP-MOE) NEW PROGRAM STARTING 7/01

COMPARING TO DECEMBER 2011, JANUARY 2012 CASES INCREASED BY 4 (44.44%) TO 13. RECIPIENTS INCREASED BY 17 (50.00%) TO 51. PAYMENTS INCREASED BY \$291 (49.66%) TO \$877. AVERAGE PAYMENT PER CASE INCREASED BY \$2.35 (3.61%) TO \$67.46. PAYMENT PER RECIPIENT DECREASED BY \$0.04 (0.23%) TO \$17.20.

COMPARING TO JANUARY 2011, JANUARY 2012 CASES DECREASED BY 16 (55.17%). RECIPIENTS DECREASED BY 27 (4.61%). TOTAL PAYMENTS DECREASED BY \$861 (49.54%). THE AVERAGE PAYMENT PER CASE INCREASED BY \$7.53 (12.56%). THE AVERAGE PAYMENT PER RECIPIENT DECREASED BY \$5.08 (22.80%).

TUBERCULOSIS CONTROL PROGRAM (TC)

COMPARING TO DECEMBER 2011, JANUARY 2012 CASES DECREASED BY 1 (14.29%) TO 6. RECIPIENTS DECREASED BY 1 (14.29%) TO 6. PAYMENTS DECREASED BY \$158 (17.83%) TO \$728. AVERAGE PAYMENT PER CASE INCREASED BY \$82.10 (64.86%) TO \$208.67. AVERAGE PAYMENT PER RECIPIENT DECREASED BY \$5.24 (4.14%) TO \$121.33.

COMPARING TO JANUARY 2011, JANUARY 2012 CASES INCREASED BY 4 (200.00%). RECIPIENTS INCREASED BY 4 (200.00%). TOTAL PAYMENTS INCREASED BY \$447 (159.07%). THE AVERAGE PAYMENT PER CASE INCREASED BY \$68.17 (48.52%). THE AVERAGE PAYMENT PER RECIPIENT DECREASED BY \$19.17 (13.64%).

SUPPLEMENTAL NUTRITION ASSISTANCE PROGRAM (SNAP)

COMPARING TO DECEMBER 2011, JANUARY 2012 SUPPLEMENTAL NUTRITION ASSISTANCE HOUSEHOLDS DECREASED BY 1,699 (0.35%) TO 488,528. PERSONS RECEIVING SUPPLEMENTAL NUTRITION ASSISTANCE DECREASED BY 5,685 (0.50%) TO 1,131,693. TOTAL COUPON ISSUANCE DECREASED BY \$714,579 (0.50%) TO \$143,309,893. THE AVERAGE HOUSEHOLD ALLOTMENT DECREASED BY \$0.44 (0.15%) TO \$293.35. THE AVERAGE ALLOTMENT PER PERSON INCREASED BY \$0.00 (0.00%) TO \$126.63.

COMPARING TO JANUARY 2011, JANUARY 2012 SUPPLEMENTAL NUTRITION ASSISTANCE HOUSEHOLDS INCREASED BY 32,933 (7.23%). PERSONS RECEIVING SUPPLEMENTAL NUTRITION ASSISTANCE INCREASED BY 92,367 (8.89%). TOTAL COUPON ISSUANCE INCREASED BY \$10,904,893 (8.24%). THE AVERAGE ALLOTMENT PER HOUSEHOLD INCREASED BY \$2.73 (0.94%). THE AVERAGE ALLOTMENT PER PERSON DECREASED BY \$0.77 (0.60%).

MEDICAL ASSISTANCE PROGRAM (MA) NEW TABLE INCLUDES PROP. 204 CATEGORIES

COMPARING TO DECEMBER 2011, JANUARY 2012 TOTAL RECIPIENTS TOTAL RECIPIENTS DECREASED BY 11,318 (0.96%). SOBRA WOMEN AT 140% FPL INCREASED BY 110 (0.98%). SOBRA CHILDREN DECREASED BY 1,289 (2.32%). ADULTS W/O CHILD AT 100% DECREASED BY 3,073 (7.29%). FOSTER CARE INCREASED BY 34 (0.00%). 1931 AT 36% FPL DECREASED BY 1,710 (0.00%). EMERGENCY SERVICES INCREASED BY 1,316 (2.23%). INFANTS DECREASED BY 281 (0.61%). ADULT W/O CHILD AT 140% DECREASED BY 7,655 (6.27%). MEDICAL W/SPEND DOWN INCREASED BY 0 (100.00%). SOBRA WOMAN AT 100% INCREASED BY 65 (1.58%). SOBRA CHILD AT 100% DECREASED BY 74 (0.03%). TRANSITIONAL MEDICAL INCREASED BY 2,206 (4.47%). 1931 AT 100% DECREASED BY 853 (0.69%). YATI DECREASED BY 2 (0.58%). ALL OTHER CATEGORIES DECREASED BY 112 (0.38%).

COMPARING TO JANUARY 2011, JANUARY 2012 TOTAL RECIPIENTS TOTAL RECIPIENTS DECREASED BY 42,880 (3.56%). SOBRA WOMEN AT 140% FPL INCREASED BY 721 (6.79%). SOBRA CHILDREN DECREASED BY 16,176 (22.95%). ADULTS W/O CHILD AT 100% DECREASED BY 24,910 (38.94%). FOSTER CARE INCREASED BY 1,458 (11.60%). 1931 AT 36% FPL INCREASED BY 35,651 (10.59%). EMERGENCY SERVICES INCREASED BY 9,857 (19.56%). INFANTS DECREASED BY 819 (1.76%). ADULT W/O CHILD AT 140% DECREASED BY 59,197 (34.10%). MEDICAL W/SPEND DOWN DECREASED BY 7,079 (100.00%). SOBRA WOMAN AT 100% INCREASED BY 525 (14.32%). SOBRA CHILD AT 100% INCREASED BY 13,286 (5.80%). TRANSITIONAL MEDICAL INCREASED BY 5,550 (12.08%). 1931 AT 100% DECREASED BY 2,343 (1.87%). YATI DECREASED BY 2 (0.58%). ALL OTHER CATEGORIES INCREASED BY 598 (2.09%).

# TANF SUMMARY

## TABLES 1, 1A, 1B, & 1C: ARIZONA 1/

	JANUARY 2012							CHANGE FROM			DECEMBER 2011			JANUARY 2011		
	FAMILIES	PERSONS	ADULTS	CHILDREN	TOTAL	AVERAGE	AVERAGE	FAMILIES	PERSONS	TOTAL	FAMILIES	PERSONS	TOTAL			
	(CASES)	(RECIP.)						PAYMENTS	PAYMENT/ CASE	PAYMENT/ RECIP.	(CASES)	(RECIP.)	PAYMENTS	(CASES)	(RECIP.)	PAYMENTS
ARIZONA	17,533	39,748	10,744	29,004	3,658,544	208.67	92.04	21	132	9,757	(1,763)	(4,052)	(437,902)			
REGION																
MARICOPA	10,641	24,623	6,516	18,107	2,217,312	208.37	90.05	120	327	27,808	(1,295)	(3,123)	(323,858)			
NORTHERN	1,094	2,487	717	1,770	225,531	206.15	90.68	3	21	2,070	44	170	7,871			
APACHE	47	115	35	80	10,449	222.32	90.86	5	5	926	11	44	3,597			
COCONINO	91	235	65	170	19,537	214.69	83.14	2	12	1,128	12	52	2,461			
MOHAVE	629	1,336	366	970	127,915	203.36	95.74	0	15	974	23	67	4,104			
NAVAJO	327	801	251	550	67,630	206.82	84.43	(4)	(11)	(958)	(2)	7	(2,291)			
CENTRAL	2,084	4,591	1,325	3,266	436,187	209.30	95.01	2	63	4,984	(148)	(299)	(41,972)			
GILA	468	1,025	375	650	112,778	240.98	110.03	(6)	0	1,887	(27)	(60)	(9,019)			
LA PAZ	64	137	37	100	12,519	195.61	91.38	3	3	548	(13)	(34)	(2,217)			
PINAL	809	1,779	474	1,305	160,819	198.79	90.40	13	66	3,583	(106)	(234)	(25,834)			
YAVAPAI	309	660	159	501	62,498	202.26	94.69	(2)	10	1,594	31	107	7,393			
YUMA	434	990	280	710	87,573	201.78	88.46	(6)	(16)	(2,628)	(33)	(78)	(12,295)			
SOUTHERN	3,714	8,047	2,186	5,861	779,514	209.89	96.87	(104)	(279)	(25,105)	(364)	(800)	(79,943)			
COCHISE	395	802	204	598	81,496	206.32	101.62	3	0	544	50	123	11,684			
GRAHAM	198	408	131	277	45,594	230.27	111.75	(16)	(51)	(4,887)	(31)	(41)	(7,166)			
GREENLEE	14	37	9	28	2,700	192.86	72.97	(1)	(2)	(583)	(3)	(2)	(987)			
PIMA	2,964	6,462	1,766	4,696	619,067	208.86	95.80	(85)	(214)	(19,273)	(415)	(997)	(92,840)			
SANTA CRUZ	143	338	76	262	30,657	214.38	90.70	(5)	(12)	(906)	35	117	9,366			

1/EXCLUDES: PRIOR MONTH NET TOTALS OF 766 CASES; 1,956 RECIPIENTS; \$122,930.  
 GRANT DIVERSION TOTALS OF: 720 CASES; \$572,285.  
 ZERO PAY TOTALS OF 2,924 CASES; 8,708 RECIPIENTS.  
 RRP: 158 CASES; 235 RECIPIENTS; \$32,609.

1/INCLUDES: TANF CHILD ONLY: 9,093 CASES; 15,553 RECIPIENTS; \$1,782,554.

	CURRENT	CURRENT MO.	CURRENT MO.	PRIOR MO.	PRIOR MO.	PRIOR MO.	MO.
	MO. CASES	RECIP.	DOLLARS	CASES	RECIP.	DOLLARS	
PASQUAYAOUI	255	717	\$76,994	8	19	\$2,579	
WM APACHE	0	0	\$0	0	0	\$0	
SALT RIVER	82	273	\$24,808	4	19	\$1,494	
SAN CARLOS	481	1,043	\$118,698	6	15	\$1,625	
HOPI	126	335	\$27,595	5	15	\$723	
<b>TOTAL</b>	<b>944</b>	<b>2,368</b>	<b>\$248,095</b>	<b>23</b>	<b>68</b>	<b>\$6,421</b>	

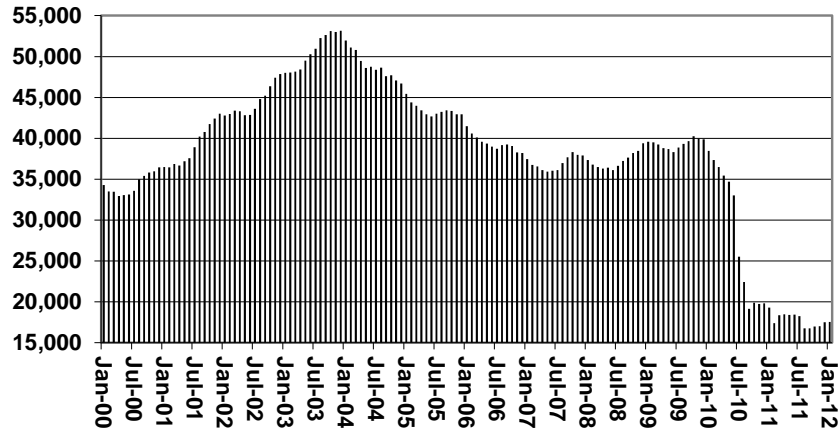
# TANF SUMMARY

TABLES 1, 1A, 1B, & 1C

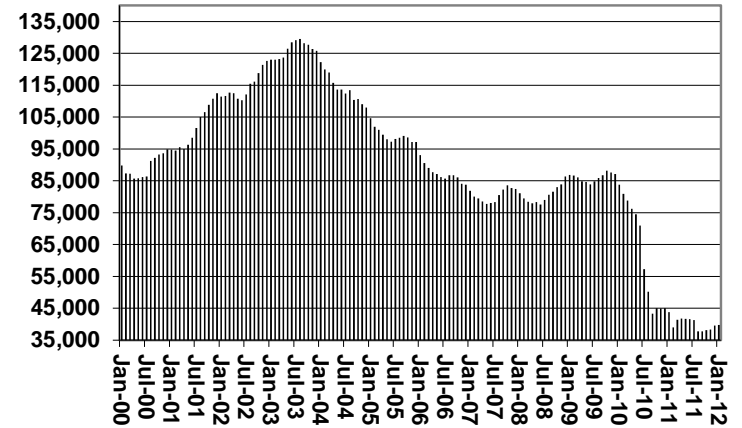
COMPARISON OF CASES, RECIPIENTS, PAYMENTS & AVERAGE PAYMENTS

FOR 2000, 2001, 2002, 2003, 2004, 2005, 2006, 2007, 2008, 2009, 2010, 2011, & 2012

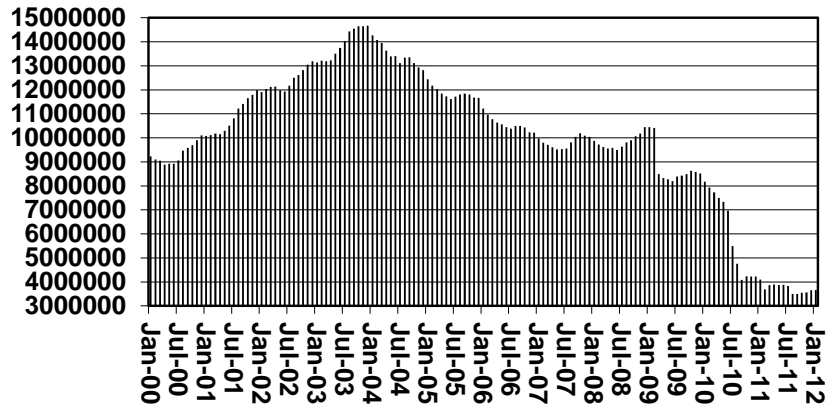
### Cases



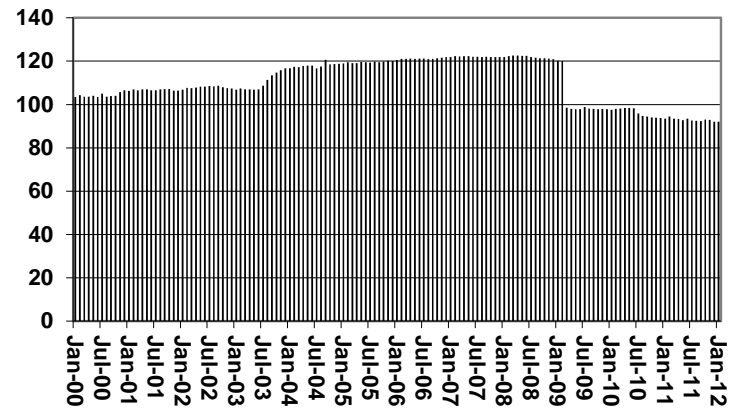
### Recipients



### Payments



### Average Payments Per Recipient



**TABLE 1**  
**CASH ASSISTANCE: ARIZONA 1/**

	JANUARY 2012							CHANGE FROM			DECEMBER 2011			JANUARY 2011		
	FAMILIES	(RECIP.)	ADULTS	CHILDREN	TOTAL	AVERAGE	AVERAGE	FAMILIES	PERSONS	TOTAL	FAMILIES	PERSONS	TOTAL	FAMILIES	PERSONS	TOTAL
	(CASES)				PAYMENTS	PAYMENT/ CASE	PAYMENT/ RECIP.	(CASES)	(RECIP.)	PAYMENTS	(CASES)	(RECIP.)	PAYMENTS	(CASES)	(RECIP.)	PAYMENTS
ARIZONA	16,391	36,462	9,488	26,974	3,476,069	212.07	95.33	4	54	5,298	(1,823)	(4,194)	(423,735)			
REGION																
MARICOPA	9,934	22,586	5,770	16,816	2,106,127	212.01	93.25	94	256	24,146	(1,317)	(3,125)	(306,585)			
NORTHERN	1,013	2,249	615	1,634	212,304	209.58	94.40	3	13	1,768	12	71	2,842			
APACHE	40	94	24	70	8,932	223.30	95.02	5	3	992	5	28	2,211			
COCONINO	83	208	56	152	18,496	222.84	88.92	2	12	1,335	8	34	2,068			
MOHAVE	594	1,239	323	916	122,337	205.95	98.74	3	15	913	28	84	5,445			
NAVAJO	296	708	212	496	62,539	211.28	88.33	(7)	(17)	(1,472)	(29)	(75)	(6,882)			
CENTRAL	1,961	4,243	1,181	3,062	418,427	213.37	98.62	(4)	15	2,739	(153)	(359)	(37,310)			
GILA	463	1,012	369	643	112,153	242.23	110.82	(8)	(3)	1,938	(28)	(62)	(9,168)			
LA PAZ	59	129	36	93	12,102	205.12	93.81	5	8	829	(8)	(8)	(959)			
PINAL	747	1,584	391	1,193	150,229	201.11	94.84	(1)	10	(28)	(117)	(289)	(27,183)			
YAVAPAI	290	610	141	469	59,711	205.90	97.89	(6)	0	713	30	102	7,208			
YUMA	402	908	244	664	84,232	209.53	92.77	(3)	(6)	(1,364)	(48)	(114)	(12,933)			
SOUTHERN	3,483	7,384	1,922	5,462	739,211	212.23	100.11	(80)	(224)	(22,704)	(347)	(769)	(76,957)			
COCHISE	381	768	190	578	79,311	208.17	103.27	6	7	799	50	124	11,235			
GRAHAM	193	391	124	267	44,323	229.65	113.36	(15)	(49)	(4,942)	(33)	(49)	(7,913)			
GREENLEE	13	29	7	22	2,633	202.54	90.79	(1)	(2)	(194)	(3)	(8)	(928)			
PIMA	2,764	5,886	1,534	4,352	583,877	211.24	99.20	(70)	(179)	(18,170)	(390)	(938)	(87,613)			
SANTA CRUZ	132	310	67	243	29,067	220.20	93.76	0	(1)	(197)	29	102	8,262			

1/EXCLUDES: PRIOR MONTH NET TOTALS OF: 334 CASES; 860 RECIPIENTS; \$86,414.  
GRANT DIVERSION TOTALS OF: 720 CASES; \$572,285.  
ZERO PAY TOTALS OF 2,916 CASES; 8,677 RECIPIENTS.

CASES WITH GRANT UNDER \$100 (SEE TABLE 1B).

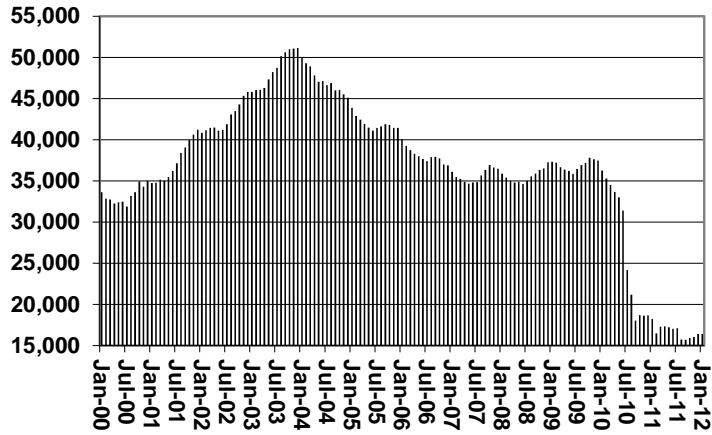
	CURRENT	CURRENT	CURRENT MO.	PRIOR MO.	PRIOR	PRIOR
	MO. CASES	MO. RECIP.	DOLLARS	CASES	MO. RECIP.	MO. DOLLARS
PASQUAY/AQUI	249	690	\$74,680	7	16	\$2,404
WM APACHE	0	0	\$0	0	0	\$0
SALT RIVER	82	273	\$24,808	4	19	\$1,494
SAN CARLOS	481	1,043	\$118,698	6	15	\$1,625
HOPI	126	335	\$27,595	5	15	\$723
<b>TOTAL</b>	<b>938</b>	<b>2,341</b>	<b>\$245,781</b>	<b>22</b>	<b>65</b>	<b>\$6,246</b>

# CHART 1

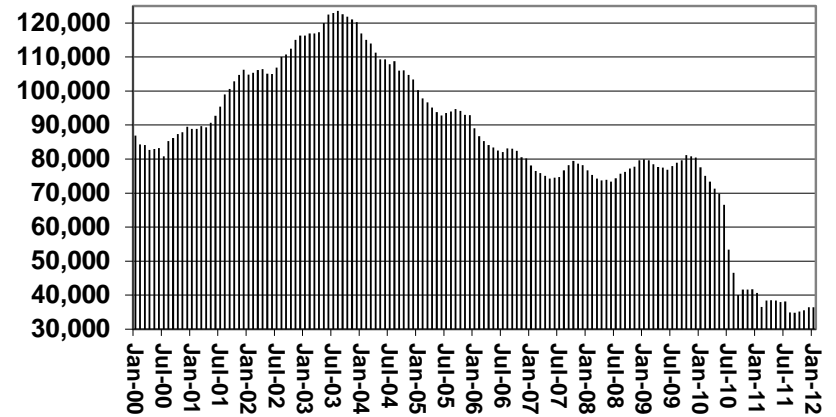
## CASH ASSISTANCE PROGRAM

### COMPARISON OF CASES, RECIPIENTS, PAYMENTS & AVERAGE PAYMENTS FOR 2000, 2001, 2002, 2003, 2004, 2005, 2006, 2007, 2008, 2009, 2010, 2011, & 2012

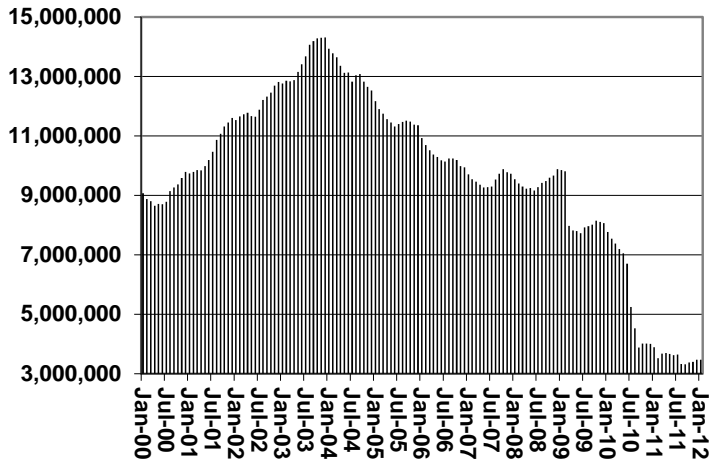
**Cases**



**Recipients**



**Payments**



**Average Payment Per Recipient**

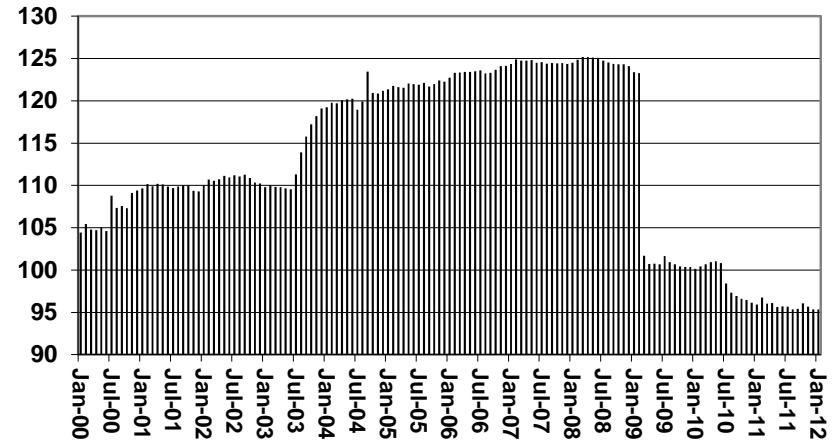


TABLE 1A  
CA-UP

CASH ASSISTANCE UNEMPLOYED PARENT PROGRAM: ARIZONA 1/

	JANUARY 2012							CHANGE FROM			DECEMBER 2011			JANUARY 2011		
	FAMILIES (CASES)	PERSONS (RECIP.)	ADULTS	CHILDREN	TOTAL PAYMENTS	AVERAGE PAYMENT/ CASE	AVERAGE PAYMENT/ RECIP.	FAMILIES (CASES)	PERSONS (RECIP.)	TOTAL PAYMENTS	FAMILIES (CASES)	PERSONS (RECIP.)	TOTAL PAYMENTS	FAMILIES (CASES)	PERSONS (RECIP.)	TOTAL PAYMENTS
ARIZONA	450	1,800	829	971	130,854	290.79	72.70	15	50	3,476	(125)	(282)	(29,532)			
REGION																
MARICOPA	256	1,059	473	586	78,148	305.27	73.79	8	28	1,711	(117)	(308)	(28,537)			
NORTHERN	40	146	69	77	10,090	252.25	69.11	3	12	814	14	56	3,647			
APACHE	5	16	8	8	1,365	273.00	85.31	0	0	0	5	16	1,365			
COCONINO	3	17	6	11	712	237.33	41.88	(1)	(3)	(230)	2	13	377			
MOHAVE	14	49	25	24	3,925	280.36	80.10	1	7	488	(9)	(31)	(1,848)			
NAVAJO	18	64	30	34	4,088	227.11	63.88	3	8	556	16	58	3,753			
CENTRAL	49	189	93	96	12,293	250.88	65.04	12	53	2,880	3	21	69			
GILA	2	8	4	4	358	179.00	22.38	0	(1)	(245)	1	4	147			
LA PAZ	1	1	0	1	164	164.00	164.00	0	(2)	(104)	(3)	(20)	(1,150)			
PINAL	33	134	63	71	8,322	252.18	62.10	12	56	3,229	5	37	1,072			
YAVAPAI	5	19	10	9	1,524	304.80	80.21	0	0	419	(1)	(1)	(235)			
YUMA	8	27	16	11	1,925	240.63	71.30	(5)	(16)	(1,033)	0	(2)	(233)			
SOUTHERN	105	406	194	212	30,323	288.79	74.69	(3)	(27)	(1,315)	(24)	(48)	(4,243)			
COCHISE	5	16	10	6	1,359	271.80	84.94	0	0	(6)	1	1	329			
GRAHAM	4	13	6	7	1,148	0.00	0.00	1	2	228	3	8	756			
GREENLEE	0	0	0	0	0	0.00	0.00	(1)	(8)	(420)	0	0	0			
PIMA	93	365	173	192	26,812	288.30	73.46	(1)	(13)	(549)	(30)	(68)	(6,190)			
SANTA CRUZ	3	12	5	7	1,004	334.67	0.00	(2)	(8)	(568)	2	11	862			

1/EXCLUDES: PRIOR MONTH NET TOTALS OF: 44 CASES; 173 RECIPIENTS; \$12,584.  
GRANT DIVERSION TOTALS OF: 0 CASES; \$0.  
ZERO PAY TOTALS OF 8 CASES; 31 RECIPIENTS.

CASES WITH GRANT UNDER \$100 (SEE TABLE 1C).

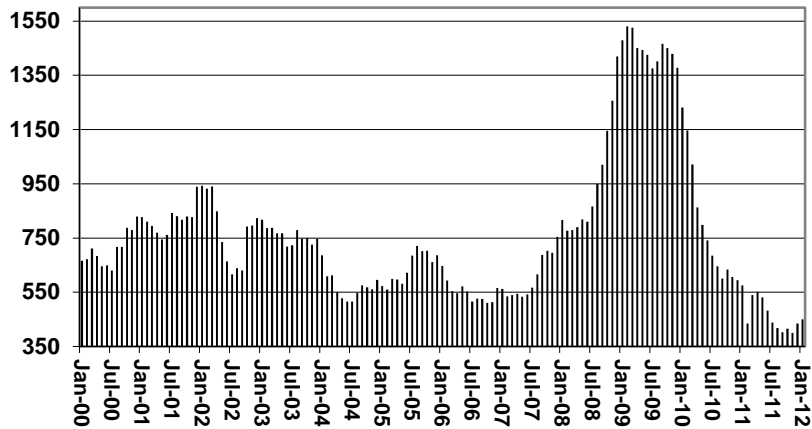
	CURRENT MO. CASES	CURRENT MO. RECIP.	CURRENT MO. DOLLARS	PRIOR MO. CASES	PRIOR MO. RECIP.	PRIOR MO. DOLLARS
PASQUA/YAQUI	6	27	\$2,314	1	3	\$175
WM APACHE	0	0	\$0	0	0	\$0
SALT RIVER	0	0	\$0	0	0	\$0
SAN CARLOS	0	0	\$0	0	0	\$0
HOPI	0	0	\$0	0	0	\$0
TOTAL	6	27	\$2,314	1	3	\$175

# CHART 1A

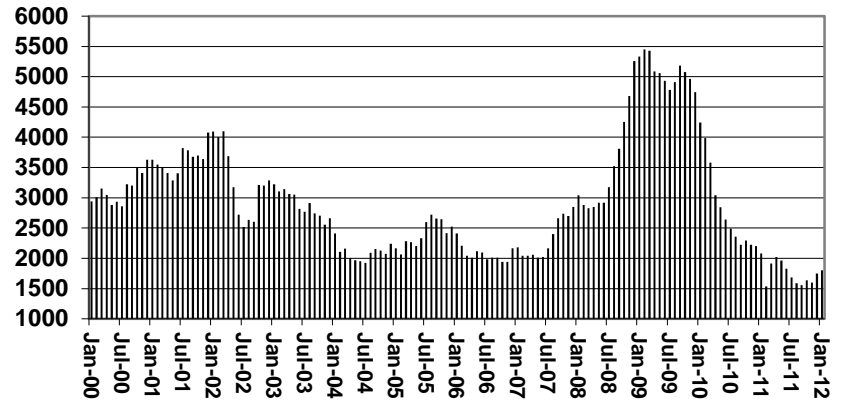
## CASH ASSISTANCE UNEMPLOYED PARENT PROGRAM

### COMPARISON OF CASES, RECIPIENTS, PAYMENTS & AVERAGE PAYMENTS FOR 2000, 2001, 2002, 2003, 2004, 2005, 2006, 2007, 2008, 2009, 2010, 2011, & 2012

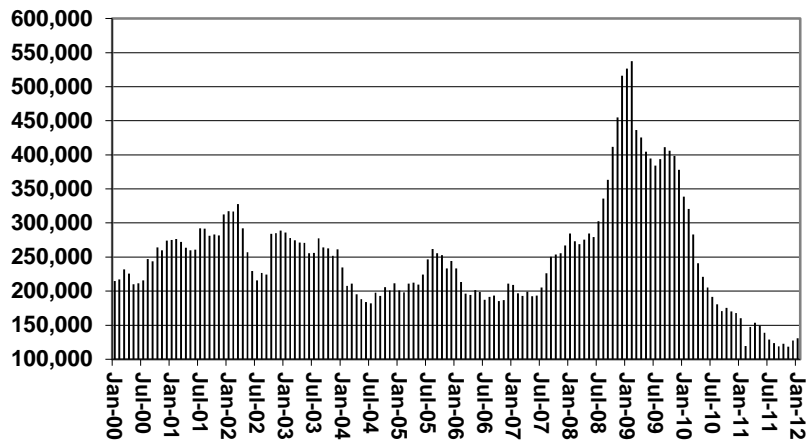
Cases



Recipients



Payments



Average Payment Per Recipient

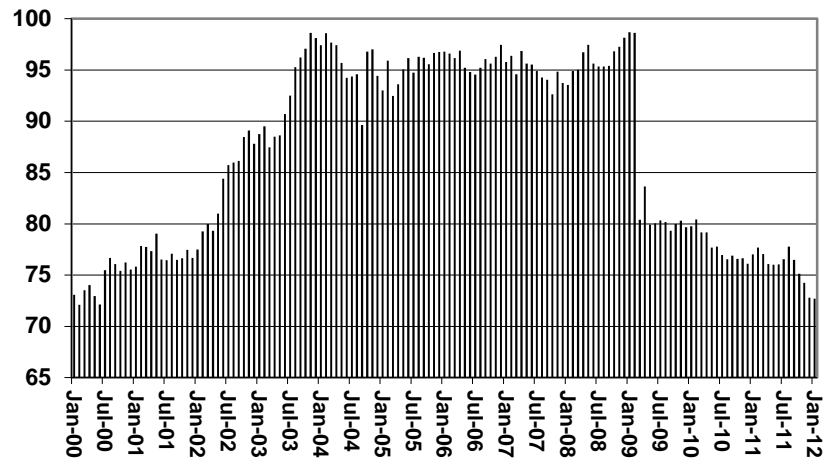




TABLE 1B 1/

CASH ASSISTANCE: ARIZONA  
CASES WITH GRANT UNDER \$100

	JANUARY 2012							CHANGE FROM			JANUARY 2011		
	FAMILIES (CASES)	PERSONS (RECIP.)	ADULTS	CHILDREN	TOTAL PAYMENTS	AVERAGE PAYMENT/ CASE	AVERAGE PAYMENT/ RECIP.	FAMILIES (CASES)	PERSONS (RECIP.)	TOTAL PAYMENTS	FAMILIES (CASES)	PERSONS (RECIP.)	TOTAL PAYMENTS
	ARIZONA	679	1,435	405	1,030	50,744	74.73	35.36	(2)	11	692	201	451
REGION													
MARICOPA	446	960	263	697	32,704	73.33	34.07	18	44	1,992	160	357	12,482
NORTHERN	39	84	29	55	2,993	76.74	35.63	(4)	(7)	(564)	16	35	1,238
APACHE	1	2	1	1	100	100.00	50.00	(1)	(1)	(118)	0	(3)	(31)
COCONINO	5	10	3	7	329	65.80	32.90	1	3	23	2	5	16
MOHAVE	21	48	18	30	1,653	78.71	34.44	(4)	(7)	(427)	4	14	507
NAVAJO	12	24	7	17	911	75.92	37.96	0	(2)	(42)	10	19	746
CENTRAL	71	149	47	102	5,314	74.85	35.66	7	13	563	20	50	1,386
GILA	3	5	2	3	267	89.00	53.40	2	4	194	0	(2)	2
LA PAZ	4	7	1	6	253	63.25	36.14	(2)	(3)	(177)	(2)	(6)	(108)
PINAL	28	57	18	39	2,234	79.79	39.19	3	2	434	6	17	291
YAVAPAI	14	31	8	23	1,263	90.21	40.74	4	10	462	2	6	420
YUMA	22	49	18	31	1,297	58.95	26.47	0	0	(350)	14	35	781
SOUTHERN	123	242	66	176	9,733	79.13	40.22	(23)	(39)	(1,299)	5	9	1,120
COCHISE	9	18	4	14	826	91.78	45.89	(3)	(7)	(249)	(1)	(2)	120
GRAHAM	1	4	1	3	123	123.00	30.75	(2)	(4)	(173)	(1)	0	(9)
GREENLEE	0	0	0	0	0	0.00	0.00	0	0	(36)	(1)	(2)	(126)
PIMA	105	204	57	147	8,198	78.08	40.19	(15)	(25)	(700)	4	9	893
SANTA CRUZ	8	16	4	12	586	73.25	36.63	(3)	(3)	(141)	4	4	242

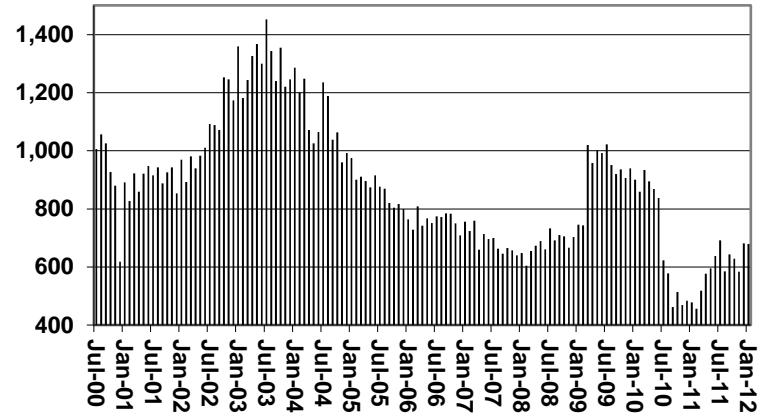
EXCLUDES: PRIOR MONTH NET TOTALS OF 367 CASES; 841 RECIPIENTS; \$22,919.

# CHART 1B

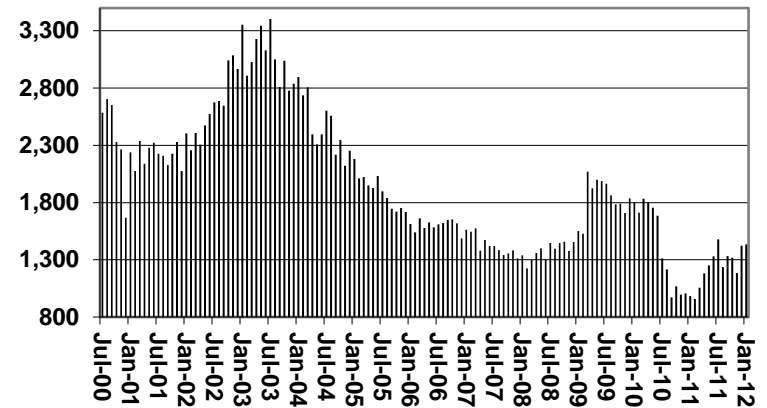
## CASH ASSISTANCE PROGRAM CASES WITH GRANT UNDER \$100

FOR 2000, 2001, 2002, 2003, 2004, 2005, 2006, 2007, 2008, 2009, 2010, 2011, & 2012

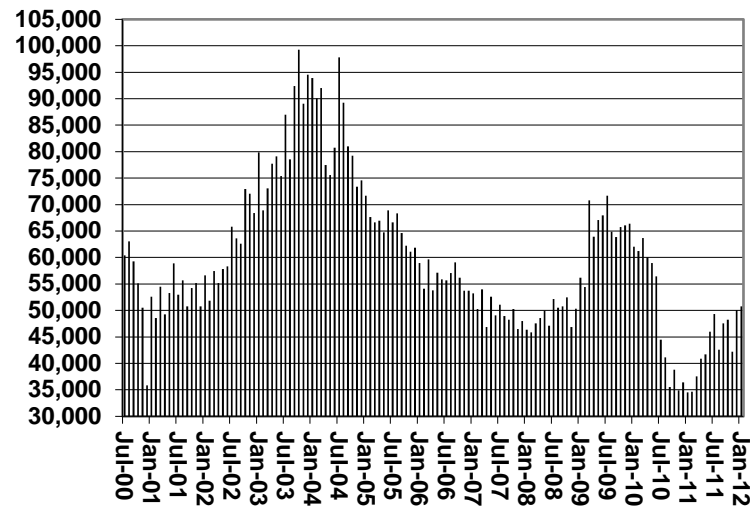
### Cases



### Recipients



### Payments



### Average Payment Per Recipient

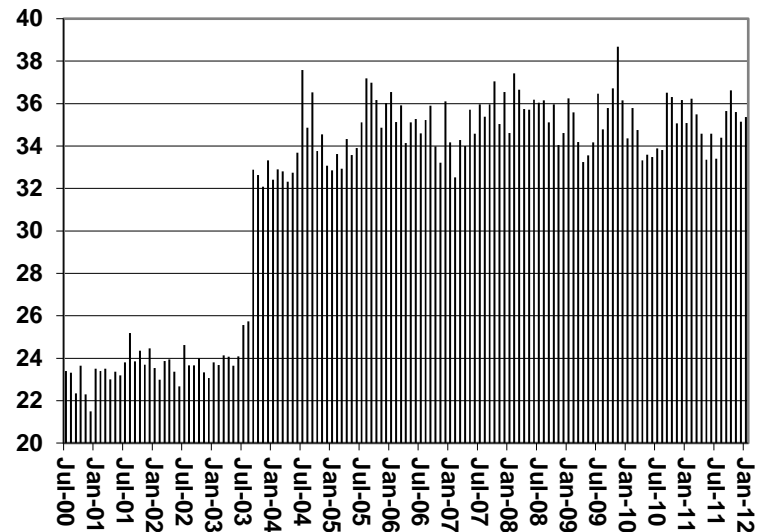


TABLE 1C 1/

CASH ASSISTANCE UNEMPLOYED PARENT PROGRAM: ARIZONA  
CASES WITH GRANT UNDER \$100

	JANUARY 2012							CHANGE FROM			JANUARY 2011		
	FAMILIES (CASES)	PERSONS (RECIP.)	ADULTS	CHILDREN	TOTAL PAYMENTS	AVERAGE PAYMENT/ CASE	AVERAGE PAYMENT/ RECIP.	FAMILIES (CASES)	PERSONS (RECIP.)	TOTAL PAYMENTS	FAMILIES (CASES)	PERSONS (RECIP.)	TOTAL PAYMENTS
ARIZONA	13	51	22	29	877	67.46	17.20	4	17	291	(16)	(27)	(861)
REGION													
MARICOPA	5	18	10	8	333	66.60	18.50	0	(1)	(41)	(21)	(47)	(1,218)
NORTHERN	2	8	4	4	144	72.00	18.00	1	3	52	2	8	144
APACHE	1	3	2	1	52	52.00	17.33	1	3	52	1	3	52
COCONINO	0	0	0	0	0	0.00	0.00	0	0	0	0	0	0
MOHAVE	0	0	0	0	0	0.00	0.00	0	0	0	0	0	0
NAVAJO	1	5	2	3	92	92.00	18.40	0	0	0	1	5	92
CENTRAL	3	10	4	6	153	51.00	15.30	1	4	67	1	4	76
GILA	0	0	0	0	0	0.00	0.00	0	0	0	0	0	0
LA PAZ	0	0	0	0	0	0.00	0.00	0	0	0	0	0	0
PINAL	1	4	2	2	34	34.00	8.50	(1)	(2)	(52)	0	1	(14)
YAVAPAI	0	0	0	0	0	0.00	0.00	0	0	0	0	0	0
YUMA	2	6	2	4	119	59.50	19.83	2	6	119	1	3	90
SOUTHERN	3	15	4	11	247	82.33	16.47	2	11	213	2	8	137
COCHISE	0	0	0	0	0	0.00	0.00	0	0	0	0	0	0
GRAHAM	0	0	0	0	0	0.00	0.00	0	0	0	0	0	0
GREENLEE	1	8	2	6	67	67.00	8.38	1	8	67	1	8	67
PIMA	2	7	2	5	180	90.00	25.71	1	3	146	1	0	70
SANTA CRUZ	0	0	0	0	0	0.00	0.00	0	0	0	0	0	0

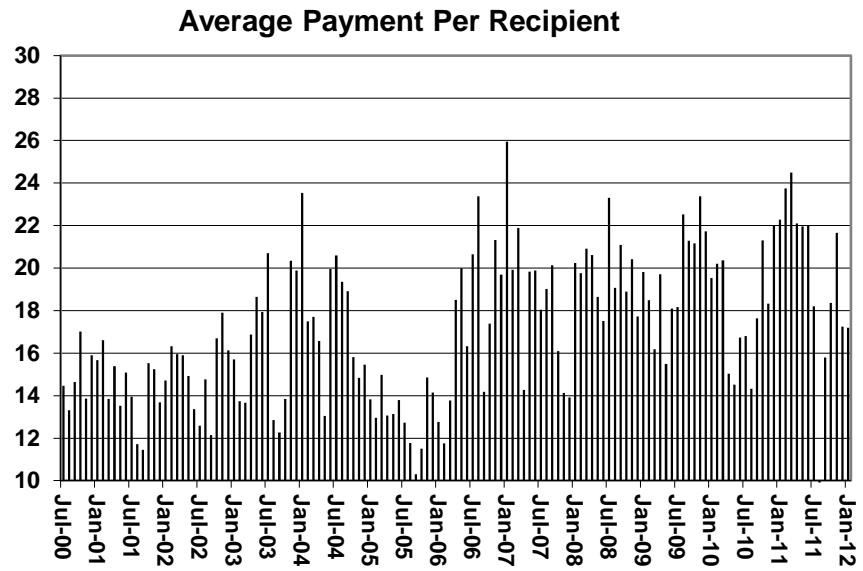
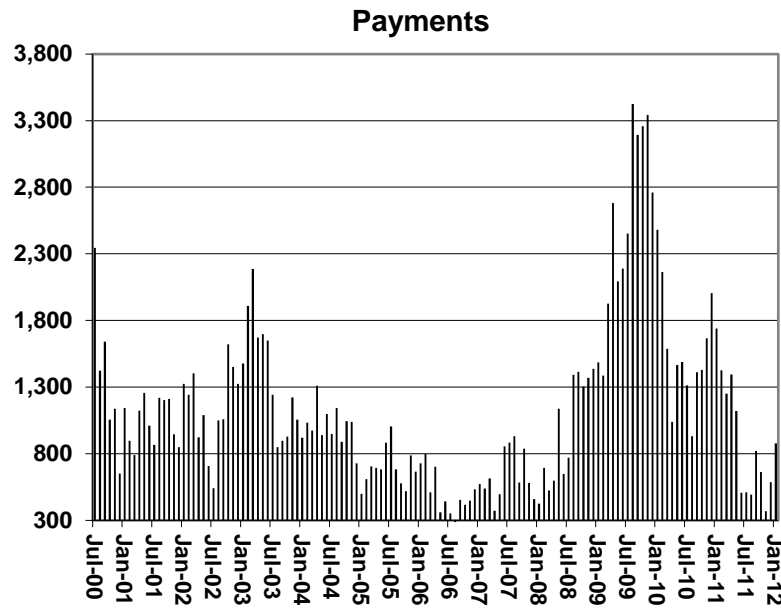
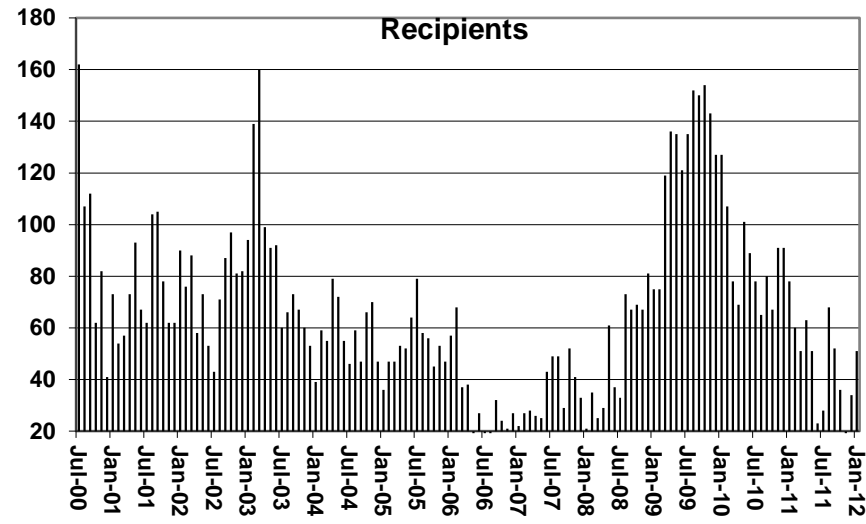
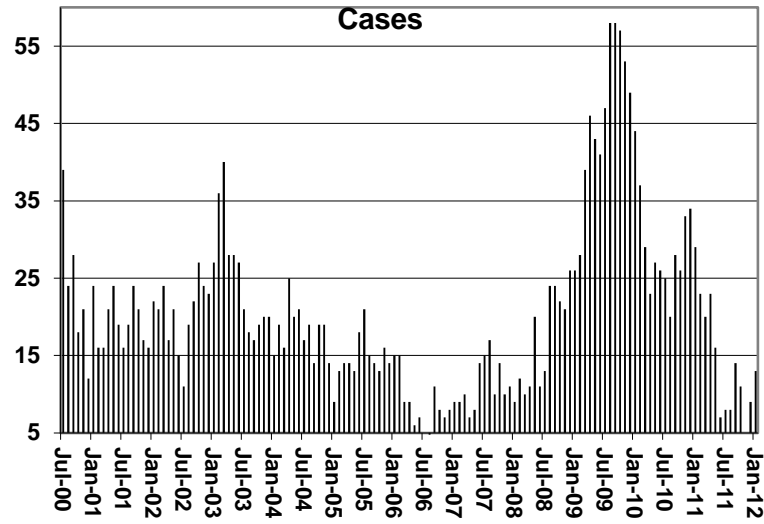
EXCLUDES: PRIOR MONTH NET TOTALS OF 21 CASES; 82 RECIPIENTS; \$1,013.

# CHART 1C

## CASH ASSISTANCE UNEMPLOYED PARENT PROGRAM

### CASES WITH GRANT UNDER \$100

FOR 2000, 2001, 2002, 2003, 2004, 2005, 2006, 2007, 2008, 2009, 2010, 2011, & 2012



**TABLE 4**  
**TUBERCULOSIS CONTROL: ARIZONA 1/**

	JANUARY 2012					CHANGE FROM			JANUARY 2011		
	NUMBER		TOTAL	AVERAGE	AVERAGE	NUMBER		TOTAL	NUMBER		TOTAL
	OF	PERSONS				OF	PERSONS		CASES	PERSONS	
CASES	(RECIP.)	PAYMENTS	PAYMENT/ CASE	PAYMENT/ RECIP.	CASES	(RECIP.)	PAYMENTS	CASES	(RECIP.)	PAYMENTS	
ARIZONA	6	6	728	121.33	121.33	(1)	(1)	(158)	4	4	447
REGION											
MARICOPA	5	5	670	134.00	134.00	(2)	(2)	(216)	3	3	389
NORTHERN	1	1	58	58.00	58.00	1	1	58	1	1	58
APACHE	0	0	0	0.00	0.00	0	0	0	0	0	0
COCONINO	0	0	0	0.00	0.00	0	0	0	0	0	0
MOHAVE	1	1	58	58.00	58.00	1	1	58	1	1	58
NAVAJO	0	0	0	0.00	0.00	0	0	0	0	0	0
CENTRAL	0	0	0	0.00	0.00	0	0	0	0	0	0
GILA	0	0	0	0.00	0.00	0	0	0	0	0	0
LA PAZ	0	0	0	0.00	0.00	0	0	0	0	0	0
PINAL	0	0	0	0.00	0.00	0	0	0	0	0	0
YAVAPAI	0	0	0	0.00	0.00	0	0	0	0	0	0
YUMA	0	0	0	0.00	0.00	0	0	0	0	0	0
SOUTHERN	0	0	0	0.00	0.00	0	0	0	0	0	0
COCHISE	0	0	0	0.00	0.00	0	0	0	0	0	0
GRAHAM	0	0	0	0.00	0.00	0	0	0	0	0	0
GREENLEE	0	0	0	0.00	0.00	0	0	0	0	0	0
PIMA	0	0	0	0.00	0.00	0	0	0	0	0	0
SANTA CRUZ	0	0	0	0.00	0.00	0	0	0	0	0	0

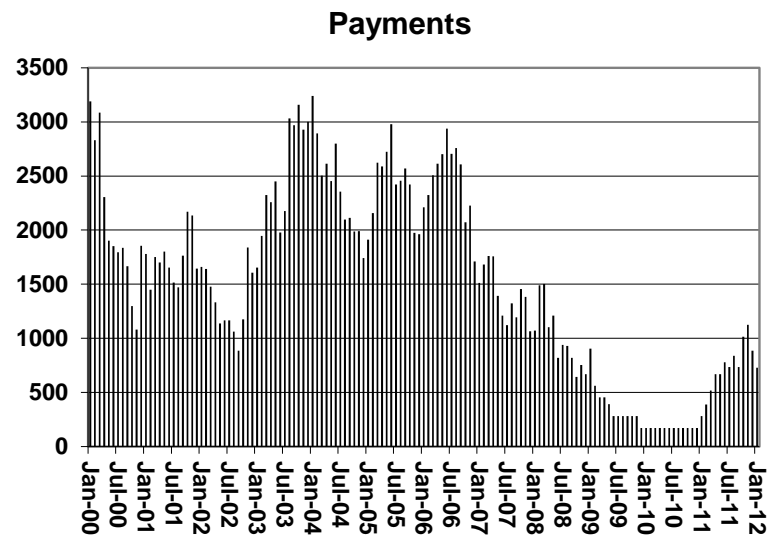
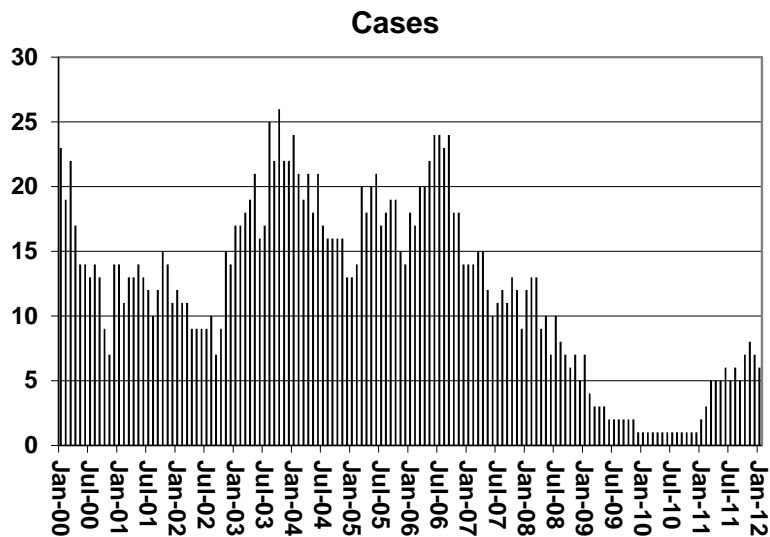
1/EXCLUDES: PRIOR MONTH NET TOTALS OF : 1 CASES; 1 RECIPIENTS; \$24.

# CHART 4

## TUBERCULOSIS CONTROL PROGRAM

### COMPARISON OF CASES, PAYMENTS & AVERAGE PAYMENTS

FOR 2000, 2001, 2002, 2003, 2004, 2005, 2006, 2007, 2008, 2009, 2010, 2011, & 2012



### Average Payment Per Case

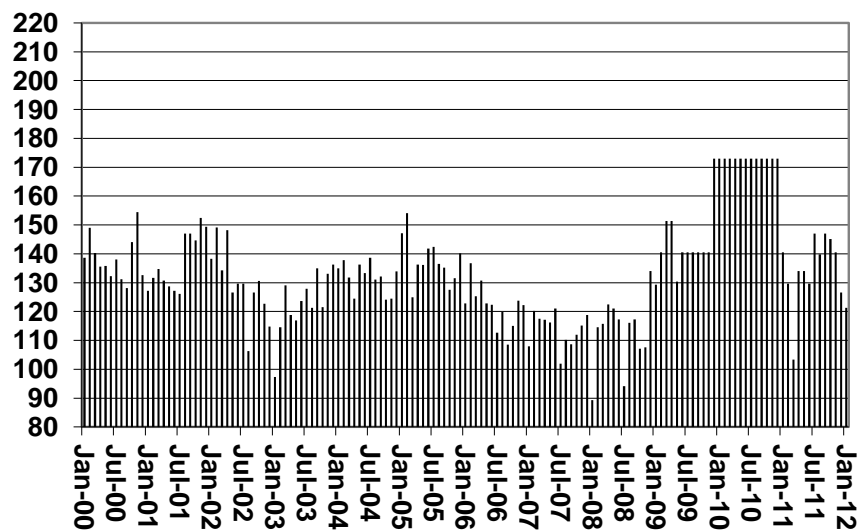


TABLE 6

SUPPLEMENTAL NUTRITION ASSISTANCE PROGRAM: ARIZONA 1/

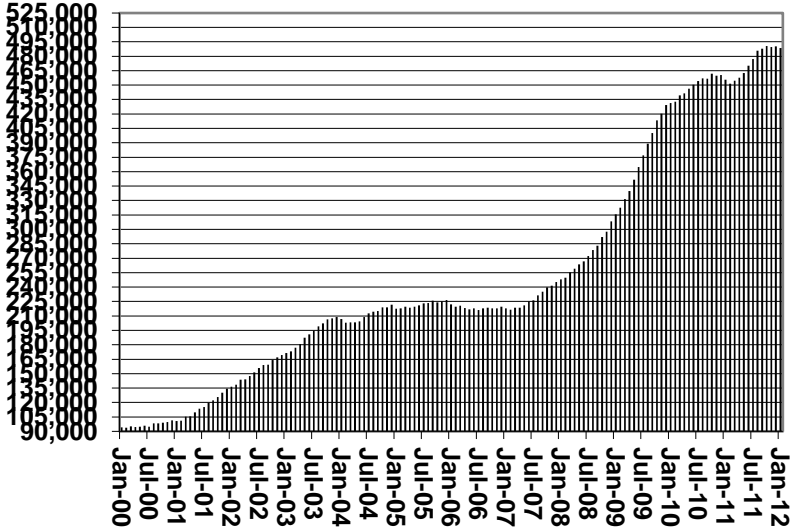
	CHANGE FROM												
	JANUARY 2012				DECEMBER 2011			JANUARY 2011					
	HOUSEHOLDS	PERSONS	ADULTS	CHILDREN	TOTAL PAYMENTS ISSUANCE	AVERAGE PAYMT./ HOUSEHOLD	AVERAGE PAYMT./ PERSON	HOUSEHOLDS	PERSONS	TOTAL PAYMENTS ISSUANCE	HOUSEHOLDS	PERSONS	TOTAL PAYMENTS ISSUANCE
ARIZONA	488,528	1,131,693	580,210	551,483	143,309,893	293.35	126.63	(1,699)	(5,685)	(714,579)	32,933	92,367	10,904,893
REGION													
MARICOPA	262,849	615,066	294,198	320,868	78,856,205	300.01	128.21	(688)	(2,254)	(187,784)	19,324	56,067	7,270,517
NORTHERN	56,955	137,162	77,531	59,631	17,134,840	300.85	124.92	129	(111)	78,810	4,139	9,864	1,186,193
APACHE	10,719	28,900	15,918	12,982	3,576,697	333.68	123.76	(12)	(196)	3,849	746	1,471	189,641
COCONINO	10,416	25,495	13,686	11,809	3,201,328	307.35	125.57	137	204	57,811	932	2,251	320,537
MOHAVE	21,669	46,122	27,729	18,393	5,805,703	267.93	125.88	(42)	(199)	(15,987)	1,338	3,344	363,030
NAVAJO	14,151	36,645	20,198	16,447	4,551,112	321.61	124.19	46	80	33,137	1,123	2,798	312,985
CENTRAL	64,692	153,452	83,041	70,411	18,656,580	288.39	121.58	(874)	(2,633)	(463,956)	4,730	13,808	1,206,954
GILA	6,329	13,907	8,065	5,842	1,802,852	284.86	129.64	69	157	21,928	226	708	73,141
LA PAZ	2,089	4,270	2,494	1,776	548,931	262.77	128.56	25	(25)	(2,551)	48	150	9,381
PINAL	23,606	59,037	30,386	28,651	7,414,019	314.07	125.58	(282)	(662)	(85,994)	2,020	6,355	658,333
YAVAPAI	16,041	32,453	19,442	13,011	4,028,500	251.14	124.13	(38)	(138)	4,747	1,246	2,723	324,508
YUMA	16,627	43,785	22,654	21,131	4,862,278	292.43	111.05	(648)	(1,965)	(402,086)	1,190	3,872	141,591
SOUTHERN	104,032	226,013	125,440	100,573	28,662,268	275.51	126.82	(266)	(687)	(141,649)	4,740	12,628	1,241,229
COCHISE	11,214	24,367	13,946	10,421	2,963,185	264.24	121.61	65	96	5,261	762	1,825	147,067
GRAHAM	3,545	8,122	4,532	3,590	1,007,454	284.19	124.04	(12)	(49)	(7,388)	93	165	(17,186)
GREENLEE	544	1,189	681	508	153,910	282.92	129.44	7	4	1,179	56	125	20,740
PIMA	83,999	179,704	99,795	79,909	23,050,434	274.41	128.27	(278)	(638)	(117,755)	3,539	9,667	1,015,682
SANTA CRUZ	4,730	12,631	6,486	6,145	1,487,285	314.44	117.75	(48)	(100)	(22,946)	290	846	74,926

1/EXCLUDES: PRIOR MONTH NET TOTALS OF : 4,459 CASES; 10,549 RECIPIENTS; \$832,361.  
 AGED CANCELATIONS: 12,927 CASES; 15,970 RECIPIENTS; \$619,261.  
 SNAP CONVERSIONS: 0 CASES; 0 RECIPIENTS; \$0.  
 SNAP CHILD ONLY: 62,680 CASES; 150,654 RECIPIENTS; \$22,453,335.  
 SNAP ZERO PAY: 3,464 CASES; 12,505 RECIPIENTS.

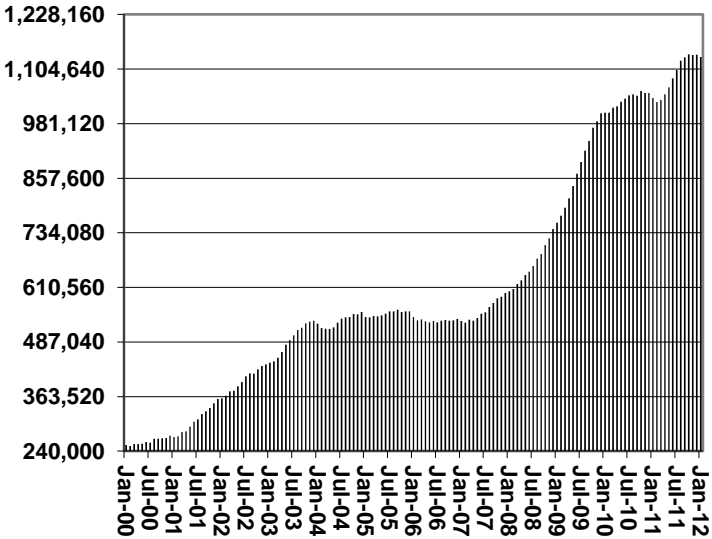
# CHART 6

## SUPPLEMENTAL NUTRITION ASSISTANCE PROGRAM (SNAP) COMPARISON OF HOUSEHOLDS, RECIPIENTS, PAYMENTS & AVERAGE PAYMENTS FOR 2000, 2001, 2002, 2003, 2004, 2005, 2006, 2007, 2008, 2009, 2010, 2011, & 2012

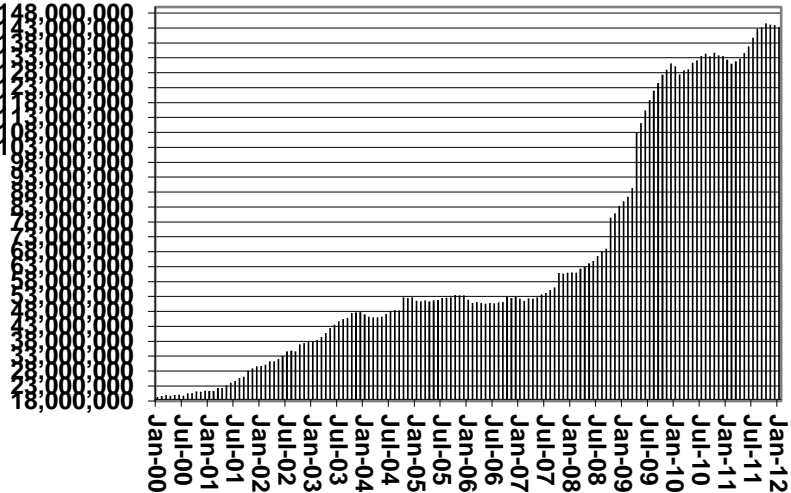
**Households**



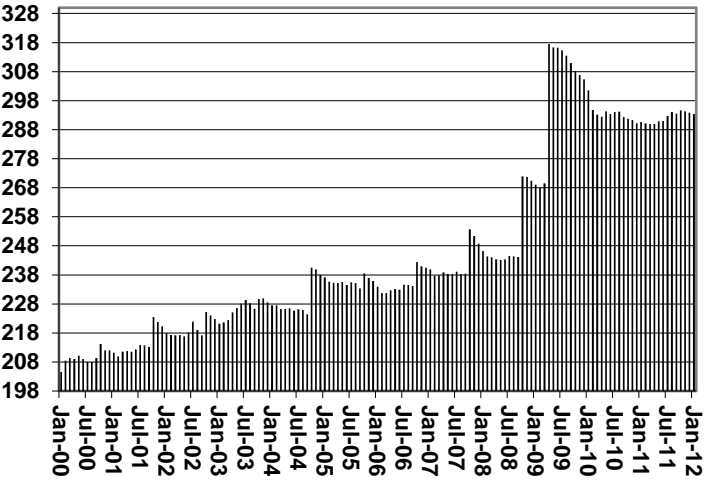
**Recipients**



**Payments**



**Average Payment Per Household**





**TABLE 7A**  
**MEDICAL ASSISTANCE PROGRAM**  
**RECIPIENTS**  
**JANUARY 2012**

	SOBRA WOMAN 133% FPL	SOBRA CHILD	ADULT W/O CHILD 100% FPL	FOSTER CARE	1931 36% FPL	FEDERAL EMERGENCY SERVICES	INFANTS	ADULT W/O CHILD 40% FPL	MEDICAL W/SPEND DOWN	SOBRA WOMAN 100% FPL	SOBRA CHILD 100% FPL	TRANSITIONAL MEDICAL T1 - T4	1931 100% FPL	YATI	OTHER	TOTAL CASES
ARIZONA	11,342	54,297	39,052	14,030	372,207	60,242	45,594	114,393	0	4,190	242,415	51,512	123,176	340	29,167	1,161,957
REGION																
MARICOPA	6,528	31,105	19,291	7,847	209,077	48,470	27,471	57,424	0	2,273	145,067	26,340	64,467	177	15,250	660,787
NORTHERN	1,230	5,555	4,594	671	47,968	1,101	4,558	17,821	0	483	23,620	5,542	14,625	21	2,985	130,774
APACHE	188	1,092	644	41	12,238	61	857	4,302	0	81	4,049	1,084	2,533	0	411	27,581
COCONINO	267	1,054	854	130	9,127	456	1,070	2,978	0	104	4,962	1,170	2,992	13	429	25,606
MOHAVE	441	1,763	2,005	351	12,617	365	1,426	5,468	0	181	8,770	1,917	5,283	6	1,601	42,194
NAVAJO	334	1,646	1,091	149	13,986	219	1,205	5,073	0	117	5,839	1,371	3,817	2	544	35,393
CENTRAL	1,691	7,390	5,710	1,605	47,655	3,745	5,838	14,875	0	644	30,015	9,185	18,171	40	4,437	151,001
GILA	117	482	470	105	4,941	100	475	1,835	0	50	1,990	501	1,342	3	360	12,771
LA PAZ	39	178	177	29	1,406	117	133	531	0	12	663	152	348	0	169	3,954
PINAL	566	3,139	1,645	618	20,928	1,212	2,212	5,816	0	240	11,215	2,522	6,303	16	1,355	57,787
YAVAPAI	403	1,527	1,722	541	8,433	1,163	1,119	3,355	0	125	6,308	1,849	3,871	20	1,233	31,669
YUMA	566	2,064	1,696	312	11,947	1,153	1,899	3,338	0	217	9,839	4,161	6,307	1	1,320	44,820
SOUTHERN	1,893	10,247	9,457	3,907	67,507	6,926	7,727	24,273	0	790	43,713	10,445	25,913	102	6,495	219,395
COCHISE	196	1,003	1,179	256	7,253	410	762	2,236	0	78	4,437	1,093	2,781	6	880	22,570
GRAHAM	87	360	321	87	2,801	23	359	978	0	40	1,453	416	880	1	167	7,973
GREENLEE	19	41	44	9	502	6	57	169	0	5	210	34	98	1	30	1,225
PIMA	1,489	8,312	7,303	3,519	53,358	6,067	6,119	19,915	0	617	34,517	8,132	20,201	94	4,955	174,598
SANTA CRUZ	102	531	610	36	3,593	420	430	975	0	50	3,096	770	1,953	0	463	13,029

**TABLE 7B**  
**MEDICAL ASSISTANCE PROGRAM**  
**RECIPIENTS**

**CHANGE FROM**

**DECEMBER 2011**

	SOBRA WOMAN 133% FPL	SOBRA CHILD	ADULT W/O CHILD 100% FPL	FOSTER CARE	1931 36% FPL	FEDERAL EMERGENCY SERVICES	INFANTS	ADULT W/O CHILD 40% FPL	MEDICAL W/SPEND DOWN	SOBRA WOMAN 100% FPL	SOBRA CHILD 100% FPL	TRANSITIONAL MEDICAL T1 - T4	1931 100% FPL	YATI	OTHER	TOTAL CASES
ARIZONA	110	(1,289)	(3,073)	34	(1,710)	1,316	(281)	(7,655)	0	65	(74)	2,206	(853)	(2)	(112)	(11,318)
REGION																
MARICOPA	67	(800)	(1,533)	28	(884)	1,317	(84)	(4,163)	0	11	469	937	(279)	1	(47)	(4,960)
NORTHERN	25	(121)	(321)	2	440	48	(42)	(1,021)	0	11	(80)	(60)	(143)	2	(17)	(1,277)
APACHE	8	(22)	(36)	0	131	(2)	(22)	(188)	0	(2)	(25)	12	(58)	0	(13)	(217)
COCONINO	1	(13)	(77)	(3)	122	35	(7)	(216)	0	9	31	(44)	30	(1)	(4)	(137)
MOHAVE	(3)	(53)	(116)	3	(9)	4	1	(347)	0	7	(69)	84	(124)	2	(2)	(622)
NAVAJO	19	(33)	(92)	2	196	11	(14)	(270)	0	(3)	(17)	(112)	9	1	2	(301)
CENTRAL	25	(183)	(493)	3	(920)	(59)	(81)	(1,009)	0	46	(287)	1,177	(406)	(3)	(47)	(2,237)
GILA	4	9	(23)	(1)	7	(2)	7	(88)	0	13	(6)	(6)	0	0	7	(79)
LA PAZ	(7)	9	(12)	0	2	3	(9)	(24)	0	2	14	(4)	(6)	0	6	(26)
PINAL	13	(143)	(162)	0	(67)	2	(43)	(435)	0	16	41	(31)	(23)	(1)	(23)	(856)
YAVAPAI	20	(13)	(135)	4	78	33	(31)	(211)	0	4	21	(37)	(7)	(2)	(18)	(294)
YUMA	(5)	(45)	(161)	0	(940)	(95)	(5)	(251)	0	11	(357)	1,255	(370)	0	(19)	(982)
SOUTHERN	(7)	(185)	(726)	1	(346)	10	(74)	(1,462)	0	(3)	(176)	152	(25)	(2)	(1)	(2,844)
COCHISE	(3)	12	(93)	3	(18)	(10)	4	(112)	0	(6)	(46)	45	(24)	(1)	16	(233)
GRAHAM	(6)	1	(21)	3	(5)	(4)	4	(68)	0	(4)	28	9	5	0	(12)	(70)
GREENLEE	1	2	(3)	0	(18)	0	0	(3)	0	1	9	5	(7)	0	1	(12)
PIMA	2	(181)	(579)	(5)	(221)	24	(71)	(1,258)	0	7	(150)	23	23	(1)	6	(2,381)
SANTA CRUZ	(1)	(19)	(30)	0	(84)	0	(11)	(21)	0	(1)	(17)	70	(22)	0	(12)	(148)

**TABLE 7C**  
**MEDICAL ASSISTANCE PROGRAM**  
**RECIPIENTS**

**CHANGE FROM**  
**JANUARY 2011**

	SOBRA WOMAN 133% FPL	SOBRA CHILD	ADULT W/O CHILD 100% FPL	FOSTER CARE	1931 36% FPL	FEDERAL EMERGENCY SERVICES	INFANTS	ADULT W/O CHILD 40% FPL	MEDICAL W/SPEND DOWN	SOBRA WOMAN 100% FPL	SOBRA CHILD 100% FPL	TRANSITIONAL MEDICAL T1 - T4	3E 1931 100% FPL	YATI	OTHER	TOTAL CASES
ARIZONA	721	(16,176)	(24,910)	1,458	35,651	9,857	(819)	(59,197)	(7,079)	525	13,286	5,550	(2,343)	(2)	598	(42,880)
REGION																
MARICOPA	870	(9,150)	(12,117)	1,129	22,961	9,364	(172)	(30,686)	(3,810)	402	11,045	3,716	(806)	(6)	512	(6,748)
NORTHERN	24	(2,123)	(3,136)	7	3,823	12	(200)	(8,076)	(911)	(29)	268	(93)	(351)	4	(92)	(10,873)
APACHE	(5)	(430)	(427)	4	712	(18)	(94)	(1,561)	(145)	(23)	(157)	12	(126)	0	(2)	(2,260)
COCONINO	(27)	(430)	(865)	(1)	671	64	(4)	(1,726)	(124)	6	127	(91)	(46)	0	(15)	(2,461)
MOHAVE	63	(599)	(1,096)	8	954	(41)	(10)	(2,812)	(459)	9	361	(7)	(82)	3	(27)	(3,735)
NAVAJO	(7)	(664)	(748)	(4)	1,486	7	(92)	(1,977)	(183)	(21)	(63)	(7)	(97)	1	(48)	(2,417)
CENTRAL	3	(2,026)	(4,036)	116	4,212	(60)	(162)	(7,666)	(1,088)	72	878	1,444	(582)	(8)	59	(8,844)
GILA	3	(205)	(336)	5	351	(16)	(45)	(861)	(117)	11	(21)	87	(40)	0	(7)	(1,191)
LA PAZ	5	(87)	(92)	12	101	(16)	(21)	(330)	(24)	(7)	(56)	(18)	(80)	0	8	(605)
PINAL	(28)	(935)	(1,272)	28	2,605	29	(25)	(2,848)	(368)	69	682	341	59	(1)	40	(1,624)
YAVAPAI	11	(242)	(1,113)	57	1,077	(1)	(36)	(1,908)	(294)	4	22	219	(313)	(4)	15	(2,506)
YUMA	12	(557)	(1,223)	14	78	(56)	(35)	(1,719)	(285)	(5)	251	815	(208)	(3)	3	(2,918)
SOUTHERN	(176)	(2,877)	(5,621)	206	4,655	541	(285)	(12,769)	(1,270)	80	1,095	483	(604)	8	119	(16,415)
COCHISE	(37)	(281)	(615)	13	317	(32)	(55)	(1,118)	(154)	(5)	69	122	(54)	2	(45)	(1,873)
GRAHAM	(29)	(119)	(177)	17	37	(1)	22	(513)	(60)	15	14	31	(14)	(1)	2	(776)
GREENLEE	1	(13)	(13)	2	72	3	4	(52)	(5)	0	(25)	(42)	(10)	(1)	(2)	(81)
PIMA	(110)	(2,300)	(4,506)	170	4,109	600	(247)	(10,845)	(964)	65	1,050	189	(467)	9	171	(13,076)
SANTA CRUZ	(1)	(164)	(310)	4	120	(29)	(9)	(241)	(87)	5	(13)	183	(59)	(1)	(7)	(609)

# CHART 7

## MEDICAL ASSISTANCE PROGRAM

### COMPARISON OF RECIPIENTS

FOR 2000, 2001, 2002, 2003, 2004, 2005, 2006, 2007, 2008, 2009, 2010, 2011, & 2012

Total Recipients

