

# CHANGES TO YOUR NUTRITION ASSISTANCE REPORTING REQUIREMENTS

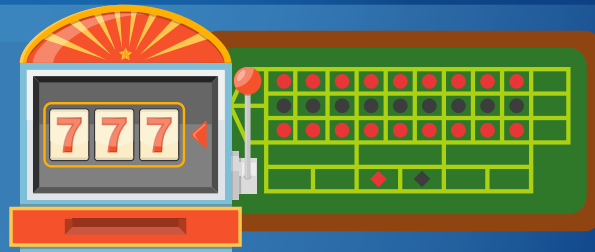


**Important:** All Lottery/Gambling winnings of **\$4,250** or more in a single game must be reported immediately. The Sources listed on this poster are not a complete list.

**BINGO**



**CASINOS**



**LOTTERY**



**RACETRACK GAMBLING**



**OFF-TRACK OR ONLINE BETTING**



**Lottery/Gambling Winnings can also come from other sources.**

DES/TANF Agencies are Equal Opportunity Employers/ Programs • Under Titles VI and VII of the Civil Rights Act of 1964 (Title VI & VII), and the Americans with Disabilities Act of 1990 (ADA), Section 504 of the Rehabilitation Act of 1973, the Age Discrimination Act of 1975, and Title II of the Genetic Information Nondiscrimination Act (GINA) of 2008; the Department prohibits discrimination in admissions, programs, services, activities, or employment based on race, color, religion, sex, national origin, age, disability, genetics and retaliation. To request this document in alternative format or for further information about this policy, contact your local office; TTY/ TDD Services: 7-1-1. • Free language assistance for DES services is available upon request. • Disponible en español en línea o en la oficina local.