



DEPARTMENT OF ECONOMIC SECURITY

Your Partner For A Stronger Arizona

State of Arizona

Department of Economic Security

Family Assistance Administration

Statistical Bulletin

February, 2012

Phone: (602) 542-3678

<https://www.azdes.gov/appreports.aspx>

**** STATISTICAL BULLETIN ****
ARIZONA DEPARTMENT OF ECONOMIC SECURITY
FAMILY ASSISTANCE ADMINISTRATION
BOX 6123, PHOENIX, ARIZONA 85005
PHONE (602) 542-3678

FEBRUARY 2012

THIS ISSUE OF THE STATISTICAL BULLETIN COMPARES FEBRUARY 2012 DATA FOR EACH OF THE INDICATED PROGRAMS WITH THE INFORMATION FOR JANUARY 2012 AND FEBRUARY 2011. STATEWIDE SUMMARIES OF ACTIVITY WITHIN EACH OF THE SPECIFIC PROGRAMS FOR THIS REPORT PERIOD ARE DISCUSSED BELOW. THE TABLES COMPARE CURRENT AND PRIOR MONTH DATA. DISTRICT AND COUNTY COMPARISONS ARE PROVIDED WITHIN THIS BULLETIN

TANF SUMMARY

COMPARING TO JANUARY 2012, FEBRUARY 2012 CASES DECREASED BY 165 (0.94%) TO 17,368. RECIPIENTS DECREASED BY 294 (0.74%) TO 39,454. PAYMENTS DECREASED BY \$8,212 (0.22%) TO \$3,650,332. AVERAGE PAYMENT PER CASE INCREASED BY \$1.51 (0.72%) TO \$0.00. PAYMENT PER RECIPIENT INCREASED BY \$0.48 (0.52%) TO \$92.52.

COMPARING TO FEBRUARY 2011, FEBRUARY 2012 CASES DECREASED BY 1,355 (7.24%). RECIPIENTS DECREASED BY 2,882 (6.81%). TOTAL PAYMENTS DECREASED BY \$318,290 (8.02%). THE AVERAGE PAYMENT PER CASE DECREASED BY \$1.79 (0.84%). THE AVERAGE PAYMENT PER RECIPIENT DECREASED BY \$1.22 (1.30%).

CASH ASSISTANCE (CA)

COMPARING TO JANUARY 2012, FEBRUARY 2012 CASES DECREASED BY 87 (0.53%) TO 16,304. RECIPIENTS DECREASED BY 203 (0.56%) TO 36,259. PAYMENTS DECREASED BY \$10,760 (0.31%) TO \$3,465,309. AVERAGE PAYMENT PER CASE INCREASED BY \$0.47 (0.22%) TO \$212.54. PAYMENT PER RECIPIENT INCREASED BY \$0.24 (0.25%) TO \$95.57.

COMPARING TO FEBRUARY 2011, FEBRUARY 2012 CASES DECREASED BY 1,390 (7.86%). RECIPIENTS DECREASED BY 3,080 (7.83%). TOTAL PAYMENTS DECREASED BY \$314,672 (8.32%). THE AVERAGE PAYMENT PER CASE DECREASED BY \$1.09 (0.51%). THE AVERAGE PAYMENT PER RECIPIENT DECREASED BY \$0.52 (0.54%).

CASH ASSISTANCE UNEMPLOYED PARENT PROGRAM (CA-UP)

COMPARING TO JANUARY 2012, FEBRUARY 2012 CASES INCREASED BY 31 (6.89%) TO 481. RECIPIENTS INCREASED BY 134 (7.44%) TO 1,934. PAYMENTS INCREASED BY \$11,031 (8.43%) TO \$141,885. AVERAGE PAYMENT PER CASE INCREASED BY \$4.19 (1.44%) TO \$294.98. PAYMENT PER RECIPIENT INCREASED BY \$0.66 (0.91%) TO \$73.36.

COMPARING TO FEBRUARY 2011, FEBRUARY 2012 CASES DECREASED BY 68 (12.39%). RECIPIENTS DECREASED BY 46 (2.32%). TOTAL PAYMENTS DECREASED BY \$10,658 (6.99%). THE AVERAGE PAYMENT PER CASE INCREASED BY \$17.13 (6.17%). THE AVERAGE PAYMENT PER RECIPIENT DECREASED BY \$3.68 (4.78%).

CASH ASSISTANCE WITH GRANT UNDER \$100 (CA-MOE)

COMPARING TO JANUARY 2012, FEBRUARY 2012 CASES DECREASED BY 106 (15.61%) TO 573. RECIPIENTS DECREASED BY 216 (15.05%) TO 1,219. PAYMENTS DECREASED BY \$8,201 (16.16%) TO \$42,543. AVERAGE PAYMENT PER CASE DECREASED BY \$0.48 (0.64%) TO \$74.25. AVERAGE PAYMENT PER RECIPIENT DECREASED BY \$0.46 (1.30%) TO \$34.90.

COMPARING TO FEBRUARY 2011, FEBRUARY 2012 CASES INCREASED BY 116 (25.38%). RECIPIENTS INCREASED BY 262 (27.38%). TOTAL PAYMENTS INCREASED BY \$7,870 (22.70%). THE AVERAGE PAYMENT PER CASE DECREASED BY \$1.62 (2.14%). THE AVERAGE PAYMENT PER RECIPIENT DECREASED BY \$1.33 (3.67%).

CASH ASSISTANCE UNEMPLOYED PARENT PROGRAM WITH GRANT UNDER \$100 (CA-UP-MOE) NEW PROGRAM STARTING 7/01

COMPARING TO JANUARY 2012, FEBRUARY 2012 CASES DECREASED BY 3 (23.08%) TO 10. RECIPIENTS DECREASED BY 9 (17.65%) TO 42. PAYMENTS DECREASED BY \$282 (32.16%) TO \$595. AVERAGE PAYMENT PER CASE DECREASED BY \$7.96 (11.80%) TO \$59.50. PAYMENT PER RECIPIENT DECREASED BY \$3.03 (17.62%) TO \$14.17.

COMPARING TO FEBRUARY 2011, FEBRUARY 2012 CASES DECREASED BY 13 (56.52%). RECIPIENTS DECREASED BY 18 (2.05%). TOTAL PAYMENTS DECREASED BY \$830 (58.25%). THE AVERAGE PAYMENT PER CASE DECREASED BY \$2.46 (3.97%). THE AVERAGE PAYMENT PER RECIPIENT DECREASED BY \$9.58 (40.34%).

TUBERCULOSIS CONTROL PROGRAM (TC)

COMPARING TO JANUARY 2012, FEBRUARY 2012 CASES DECREASED BY 1 (16.67%) TO 5. RECIPIENTS DECREASED BY 1 (16.67%) TO 5. PAYMENTS DECREASED BY \$108 (14.84%) TO \$620. AVERAGE PAYMENT PER CASE INCREASED BY \$88.85 (73.23%) TO \$210.18. AVERAGE PAYMENT PER RECIPIENT INCREASED BY \$2.67 (2.20%) TO \$124.00.

COMPARING TO FEBRUARY 2011, FEBRUARY 2012 CASES INCREASED BY 2 (66.67%). RECIPIENTS INCREASED BY 2 (66.67%). TOTAL PAYMENTS INCREASED BY \$231 (59.38%). THE AVERAGE PAYMENT PER CASE INCREASED BY \$80.51 (62.09%). THE AVERAGE PAYMENT PER RECIPIENT DECREASED BY \$5.67 (4.37%).

SUPPLEMENTAL NUTRITION ASSISTANCE PROGRAM (SNAP)

COMPARING TO JANUARY 2012, FEBRUARY 2012 SUPPLEMENTAL NUTRITION ASSISTANCE HOUSEHOLDS DECREASED BY 5,911 (1.21%) TO 482,617. PERSONS RECEIVING SUPPLEMENTAL NUTRITION ASSISTANCE DECREASED BY 13,654 (1.21%) TO 1,118,039. TOTAL COUPON ISSUANCE DECREASED BY \$3,286,539 (2.29%) TO \$140,023,354. THE AVERAGE HOUSEHOLD ALLOTMENT DECREASED BY \$3.22 (1.10%) TO \$290.13. THE AVERAGE ALLOTMENT PER PERSON DECREASED BY \$1.39 (1.10%) TO \$125.24.

COMPARING TO FEBRUARY 2011, FEBRUARY 2012 SUPPLEMENTAL NUTRITION ASSISTANCE HOUSEHOLDS INCREASED BY 31,070 (6.88%). PERSONS RECEIVING SUPPLEMENTAL NUTRITION ASSISTANCE INCREASED BY 87,900 (8.53%). TOTAL COUPON ISSUANCE INCREASED BY \$8,984,133 (6.86%). THE AVERAGE ALLOTMENT PER HOUSEHOLD DECREASED BY \$0.07 (0.02%). THE AVERAGE ALLOTMENT PER PERSON DECREASED BY \$1.97 (1.55%).

MEDICAL ASSISTANCE PROGRAM (MA) NEW TABLE INCLUDES PROP. 204 CATEGORIES

COMPARING TO JANUARY 2012, FEBRUARY 2012 TOTAL RECIPIENTS TOTAL RECIPIENTS DECREASED BY 10,081 (0.87%). SOBRA WOMEN AT 140% FPL INCREASED BY 103 (0.91%). SOBRA CHILDREN DECREASED BY 912 (1.68%). ADULTS W/O CHILD AT 100% DECREASED BY 2,480 (6.35%). FOSTER CARE INCREASED BY 20 (0.00%). 1931 AT 36% FPL DECREASED BY 1,064 (0.00%). EMERGENCY SERVICES INCREASED BY 1,085 (1.80%). INFANTS DECREASED BY 38 (0.08%). ADULT W/O CHILD AT 140% DECREASED BY 5,570 (4.87%). MEDICAL W/SPEND DOWN INCREASED BY 0 (100.00%). SOBRA WOMAN AT 100% INCREASED BY 23 (0.55%). SOBRA CHILD AT 100% DECREASED BY 957 (0.39%). TRANSITIONAL MEDICAL INCREASED BY 310 (0.60%). 1931 AT 100% DECREASED BY 486 (0.39%). YATI INCREASED BY 19 (5.59%). ALL OTHER CATEGORIES DECREASED BY 134 (0.46%).

COMPARING TO FEBRUARY 2011, FEBRUARY 2012 TOTAL RECIPIENTS TOTAL RECIPIENTS DECREASED BY 46,759 (3.90%). SOBRA WOMEN AT 140% FPL INCREASED BY 975 (9.31%). SOBRA CHILDREN DECREASED BY 16,352 (23.45%). ADULTS W/O CHILD AT 100% DECREASED BY 27,204 (42.66%). FOSTER CARE INCREASED BY 1,525 (12.18%). 1931 AT 36% FPL INCREASED BY 37,282 (11.17%). EMERGENCY SERVICES INCREASED BY 11,310 (22.61%). INFANTS DECREASED BY 269 (0.59%). ADULT W/O CHILD AT 140% DECREASED BY 63,812 (36.96%). MEDICAL W/SPEND DOWN DECREASED BY 7,151 (100.00%). SOBRA WOMAN AT 100% INCREASED BY 494 (13.28%). SOBRA CHILD AT 100% INCREASED BY 12,497 (5.46%). TRANSITIONAL MEDICAL INCREASED BY 5,514 (11.91%). 1931 AT 100% DECREASED BY 1,821 (1.46%). YATI INCREASED BY 15 (4.36%). ALL OTHER CATEGORIES INCREASED BY 238 (0.83%).

TANF SUMMARY

TABLES 1, 1A, 1B, & 1C: ARIZONA 1/

	FEBRUARY 2012							CHANGE FROM			FEBRUARY 2011		
	FAMILIES (CASES)	PERSONS (RECIP.)	ADULTS	CHILDREN	TOTAL PAYMENTS	AVERAGE PAYMENT/ CASE	AVERAGE PAYMENT/ RECIP.	JANUARY 2012			FEBRUARY 2011		
								FAMILIES (CASES)	PERSONS (RECIP.)	TOTAL PAYMENTS	FAMILIES (CASES)	PERSONS (RECIP.)	TOTAL PAYMENTS
ARIZONA	17,368	39,454	10,749	28,705	3,650,332	210.18	92.52	(165)	(294)	(8,212)	(1,355)	(2,882)	(318,290)
REGION													
MARICOPA	10,648	24,709	6,623	18,086	2,241,774	210.53	90.73	7	86	24,462	(931)	(2,137)	(217,840)
NORTHERN	1,052	2,379	689	1,690	218,499	207.70	91.84	(42)	(108)	(7,032)	27	126	5,286
APACHE	43	107	34	73	9,813	228.21	91.71	(4)	(8)	(636)	6	38	2,608
COCONINO	88	214	64	150	18,248	207.36	85.27	(3)	(21)	(1,289)	10	20	974
MOHAVE	613	1,319	364	955	125,494	204.72	95.14	(16)	(17)	(2,421)	21	84	3,079
NAVAJO	308	739	227	512	64,944	210.86	87.88	(19)	(62)	(2,686)	(10)	(16)	(1,375)
CENTRAL	2,044	4,498	1,278	3,220	427,114	208.96	94.96	(40)	(93)	(9,073)	(91)	(122)	(28,208)
GILA	427	917	322	595	101,329	237.30	110.50	(41)	(108)	(11,449)	(35)	(74)	(12,343)
LA PAZ	60	127	34	93	10,940	182.33	86.14	(4)	(10)	(1,579)	(15)	(30)	(3,601)
PINAL	839	1,851	505	1,346	167,599	199.76	90.55	30	72	6,780	(47)	(71)	(12,024)
YAVAPAI	298	646	154	492	61,365	205.92	94.99	(11)	(14)	(1,133)	19	87	6,469
YUMA	420	957	263	694	85,881	204.48	89.74	(14)	(33)	(1,692)	(13)	(34)	(6,709)
SOUTHERN	3,624	7,868	2,159	5,709	762,945	210.53	96.97	(90)	(179)	(16,569)	(360)	(749)	(77,528)
COCHISE	395	814	208	606	81,978	207.54	100.71	0	12	482	53	143	12,511
GRAHAM	195	403	132	271	45,869	235.23	113.82	(3)	(5)	275	(40)	(62)	(7,514)
GREENLEE	17	42	12	30	3,509	206.41	83.55	3	5	809	(2)	(3)	(284)
PIMA	2,886	6,311	1,737	4,574	603,393	209.08	95.61	(78)	(151)	(15,674)	(396)	(891)	(88,333)
SANTA CRUZ	131	298	70	228	28,196	215.24	94.62	(12)	(40)	(2,461)	25	64	6,092

1/EXCLUDES: PRIOR MONTH NET TOTALS OF 811 CASES; 2,065 RECIPIENTS; \$127,060.
 GRANT DIVERSION TOTALS OF: 554 CASES; \$435,417.
 ZERO PAY TOTALS OF 1,814 CASES; 5,460 RECIPIENTS.
 RRP: 160 CASES; 230 RECIPIENTS; \$30,443.

1/INCLUDES: TANF CHILD ONLY: 9,071 CASES; 15,435 RECIPIENTS; \$1,795,507.

	CURRENT MO. CASES	CURRENT MO. RECIP.	CURRENT MO. DOLLARS	PRIOR MO. CASES	PRIOR MO. RECIP	PRIOR MO. DOLLARS
PASQUAYYAQUI	232	645	\$68,535	10	30	\$2,264
WM APACHE	0	0	\$0	0	0	\$0
SALT RIVER	81	273	\$24,892	5	21	\$2,540
SAN CARLOS	428	909	\$105,272	8	20	\$875
HOPI	114	307	\$25,607	3	12	\$337
TOTAL	855	2,134	\$224,306	26	83	\$6,016

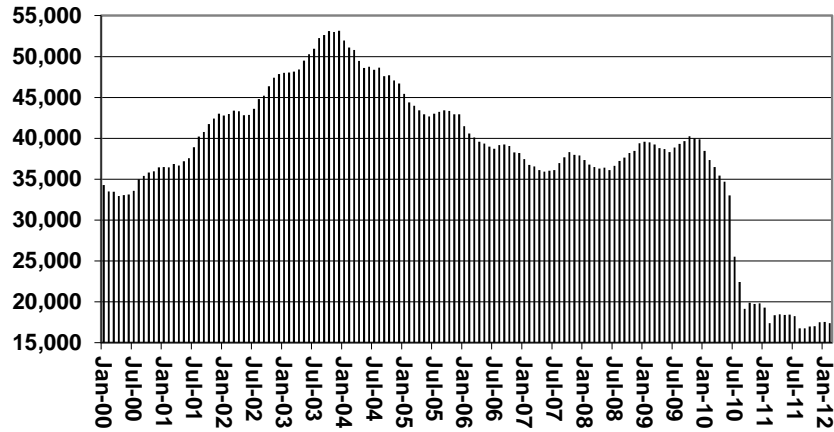
TANF SUMMARY

TABLES 1, 1A, 1B, & 1C

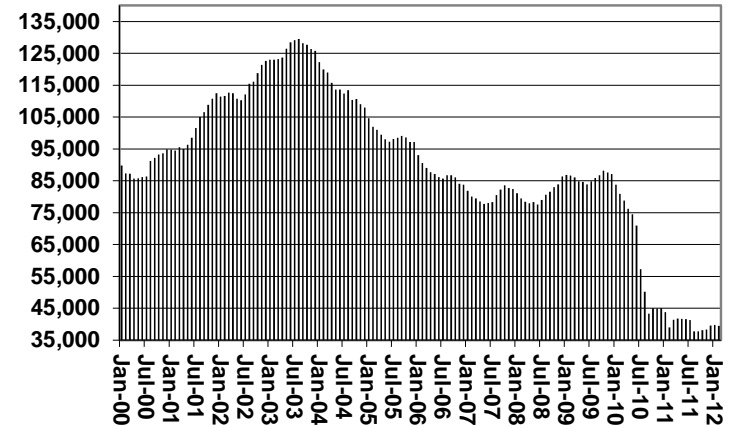
COMPARISON OF CASES, RECIPIENTS, PAYMENTS & AVERAGE PAYMENTS

FOR 2000, 2001, 2002, 2003, 2004, 2005, 2006, 2007, 2008, 2009, 2010, 2011, & 2012

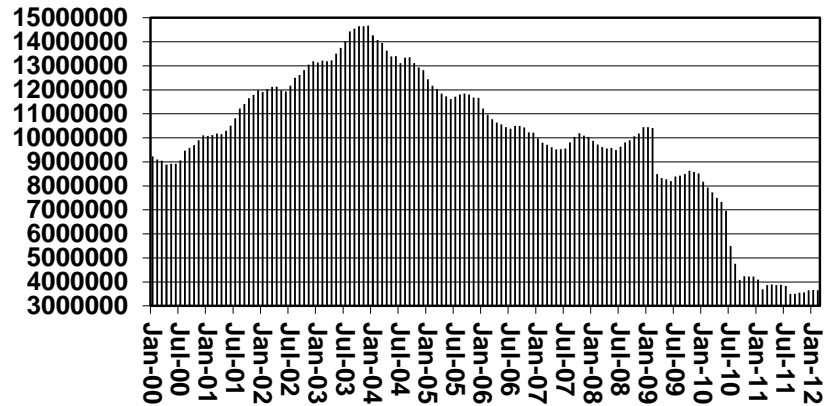
Cases



Recipients



Payments



Average Payments Per Recipient

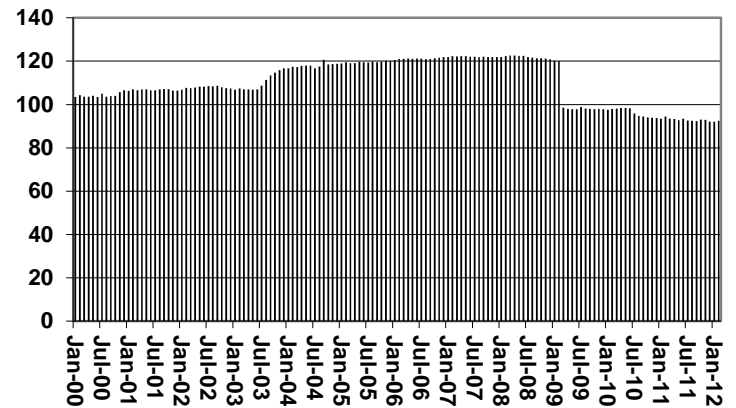


TABLE 1
CASH ASSISTANCE: ARIZONA 1/

	FEBRUARY 2012							CHANGE FROM			FEBRUARY 2011		
	FAMILIES (CASES)	(RECIP.)	ADULTS	CHILDREN	TOTAL PAYMENTS	AVERAGE PAYMENT/ CASE	AVERAGE PAYMENT/ RECIP.	JANUARY 2012			FEBRUARY 2011		
								FAMILIES (CASES)	PERSONS (RECIP.)	TOTAL PAYMENTS	FAMILIES (CASES)	PERSONS (RECIP.)	TOTAL PAYMENTS
ARIZONA	16,304	36,259	9,509	26,750	3,465,309	212.54	95.57	(87)	(203)	(10,760)	(1,390)	(3,080)	(314,672)
REGION													
MARICOPA	9,998	22,727	5,882	16,845	2,129,178	212.96	93.68	64	141	23,051	(916)	(2,158)	(207,799)
NORTHERN	982	2,175	602	1,573	206,029	209.81	94.73	(31)	(74)	(6,275)	0	50	1,485
APACHE	36	83	22	61	7,881	218.92	94.95	(4)	(11)	(1,051)	1	21	1,324
COCONINO	79	189	55	134	17,154	217.14	90.76	(4)	(19)	(1,342)	4	7	543
MOHAVE	579	1,220	321	899	119,329	206.09	97.81	(15)	(19)	(3,008)	13	62	2,388
NAVAJO	288	683	204	479	61,665	214.11	90.29	(8)	(25)	(874)	(18)	(40)	(2,770)
CENTRAL	1,931	4,147	1,135	3,012	408,002	211.29	98.38	(18)	(67)	(8,400)	(115)	(255)	(31,570)
GILA	421	900	313	587	100,582	238.91	111.76	(42)	(112)	(11,571)	(39)	(87)	(12,779)
LA PAZ	56	117	32	85	10,673	190.59	91.22	(3)	(12)	(1,429)	(15)	(28)	(3,258)
PINAL	774	1,641	414	1,227	154,829	200.04	94.35	27	57	4,600	(61)	(140)	(15,533)
YAVAPAI	286	609	143	466	59,561	208.26	97.80	(4)	(1)	(150)	21	86	6,788
YUMA	394	880	233	647	82,357	209.03	93.59	(8)	(28)	(1,875)	(22)	(65)	(7,777)
SOUTHERN	3,393	7,210	1,890	5,320	722,100	212.82	100.15	(90)	(174)	(17,111)	(358)	(738)	(75,799)
COCHISE	379	772	191	581	79,626	210.09	103.14	(2)	4	315	55	140	12,535
GRAHAM	187	380	121	259	43,928	234.91	115.60	(6)	(11)	(395)	(42)	(70)	(8,570)
GREENLEE	14	30	7	23	3,133	223.79	104.43	1	1	500	(4)	(13)	(615)
PIMA	2,690	5,749	1,508	4,241	568,739	211.43	98.93	(74)	(137)	(15,138)	(392)	(867)	(85,296)
SANTA CRUZ	123	279	63	216	26,674	216.86	95.61	(9)	(31)	(2,393)	25	72	6,147

1/EXCLUDES: PRIOR MONTH NET TOTALS OF: 352 CASES; 898 RECIPIENTS; \$87,759.
GRANT DIVERSION TOTALS OF: 554 CASES; \$435,417.
ZERO PAY TOTALS OF 1,804 CASES; 5,421 RECIPIENTS.

CASES WITH GRANT UNDER \$100 (SEE TABLE 1B).

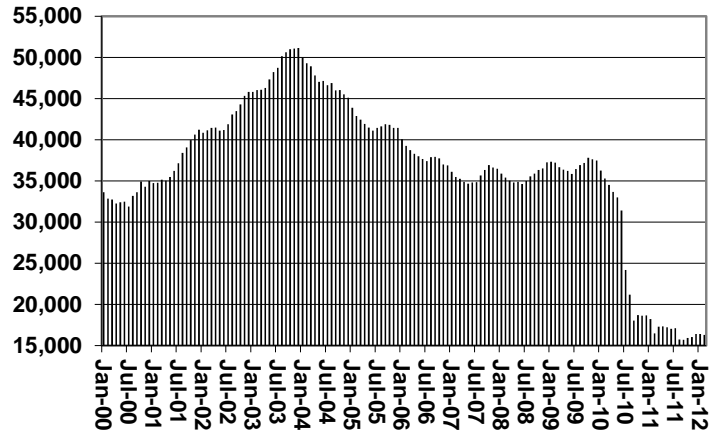
	CURRENT MO. CASES	CURRENT MO. RECIP.	CURRENT MO. DOLLARS	PRIOR MO. CASES	PRIOR MO. RECIP.	PRIOR MO. DOLLARS
PASQUAYYAQUI	229	631	\$67,320	10	30	\$2,264
WM APACHE	0	0	\$0	0	0	\$0
SALT RIVER	81	273	\$24,892	5	21	\$2,540
SAN CARLOS	427	906	\$105,175	8	20	\$875
HOPI	114	307	\$25,607	3	12	\$337
TOTAL	851	2,117	\$222,994	26	83	\$6,016

CHART 1

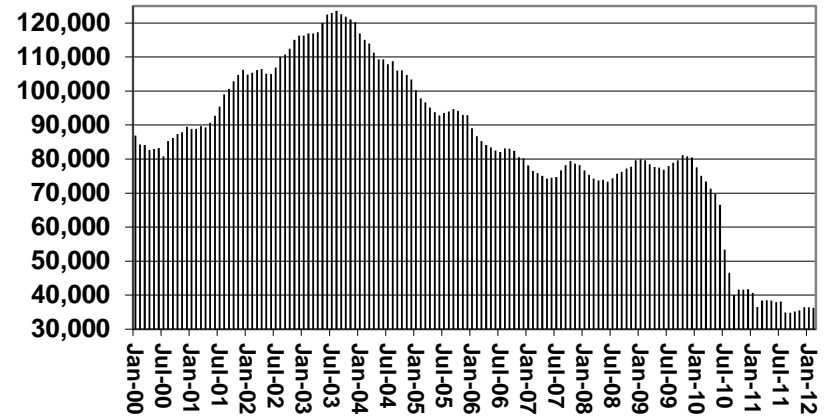
CASH ASSISTANCE PROGRAM

COMPARISON OF CASES, RECIPIENTS, PAYMENTS & AVERAGE PAYMENTS FOR 2000, 2001, 2002, 2003, 2004, 2005, 2006, 2007, 2008, 2009, 2010, 2011, & 2012

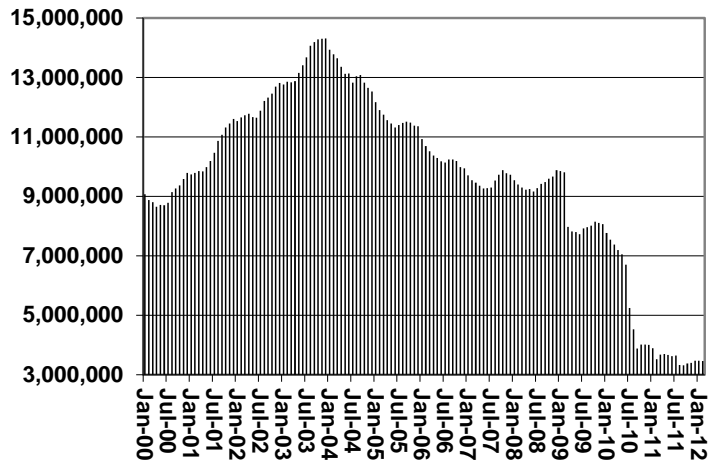
Cases



Recipients



Payments



Average Payment Per Recipient

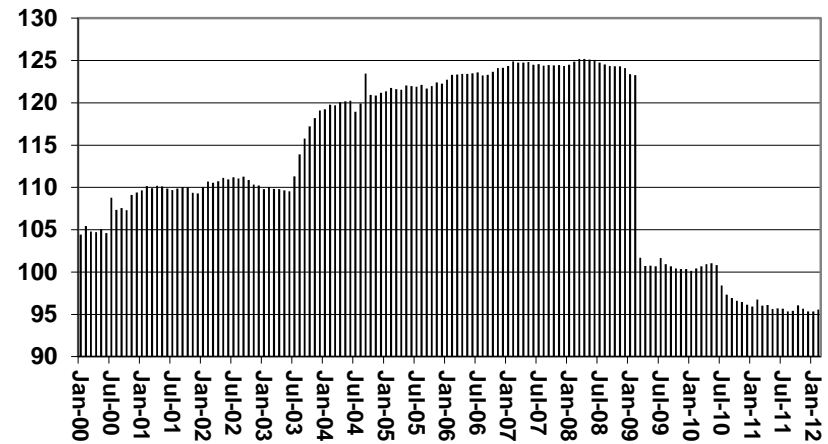


TABLE 1A
CA-UP

CASH ASSISTANCE UNEMPLOYED PARENT PROGRAM: ARIZONA 1/

	FEBRUARY 2012							CHANGE FROM			FEBRUARY 2011		
	FAMILIES (CASES)	PERSONS (RECIP.)	ADULTS	CHILDREN	TOTAL PAYMENTS	AVERAGE PAYMENT/ CASE	AVERAGE PAYMENT/ RECIP.	FAMILIES (CASES)	PERSONS (RECIP.)	TOTAL PAYMENTS	FAMILIES (CASES)	PERSONS (RECIP.)	TOTAL PAYMENTS
ARIZONA	481	1,934	898	1,036	141,885	294.98	73.36	31	134	11,031	(68)	(46)	(10,658)
REGION													
MARICOPA	278	1,158	526	632	85,096	306.10	73.49	22	99	6,948	(77)	(132)	(14,817)
NORTHERN	38	142	67	75	10,042	264.26	70.72	(2)	(4)	(48)	13	51	3,079
APACHE	7	24	12	12	1,932	276.00	80.50	2	8	567	6	21	1,376
COCONINO	2	14	4	10	537	268.50	38.36	(1)	(3)	(175)	0	4	(34)
MOHAVE	17	62	33	29	4,960	291.76	80.00	3	13	1,035	0	2	443
NAVAJO	12	42	18	24	2,613	217.75	62.21	(6)	(22)	(1,475)	7	24	1,294
CENTRAL	57	224	106	118	15,021	263.53	67.06	9	29	2,586	14	64	3,425
GILA	4	14	8	6	562	140.50	10.04	2	6	204	4	14	562
LA PAZ	0	0	0	0	0	0.00	0.00	(1)	(1)	(164)	(1)	(6)	(449)
PINAL	41	158	75	83	10,868	265.07	68.78	8	24	2,546	11	56	3,312
YAVAPAI	3	16	6	10	1,233	411.00	77.06	(2)	(3)	(291)	(3)	(7)	(463)
YUMA	9	36	17	19	2,358	262.00	65.50	1	9	433	2	10	519
SOUTHERN	108	410	199	211	31,726	293.76	77.38	3	4	1,403	(17)	(32)	(2,401)
COCHISE	5	16	10	6	1,359	271.80	84.94	0	0	0	(1)	(4)	(121)
GRAHAM	6	20	10	10	1,781	0.00	0.00	2	7	633	4	12	1,111
GREENLEE	1	3	2	1	209	209.00	69.67	1	3	209	1	3	209
PIMA	93	359	172	187	27,373	294.33	76.25	0	(6)	561	(21)	(40)	(3,428)
SANTA CRUZ	3	12	5	7	1,004	334.67	17.42	0	0	0	0	(3)	(172)

1/EXCLUDES: PRIOR MONTH NET TOTALS OF: 48 CASES; 189 RECIPIENTS; \$13,022.
GRANT DIVERSION TOTALS OF: 0 CASES; \$0.
ZERO PAY TOTALS OF 10 CASES; 39 RECIPIENTS.

CASES WITH GRANT UNDER \$100 (SEE TABLE 1C).

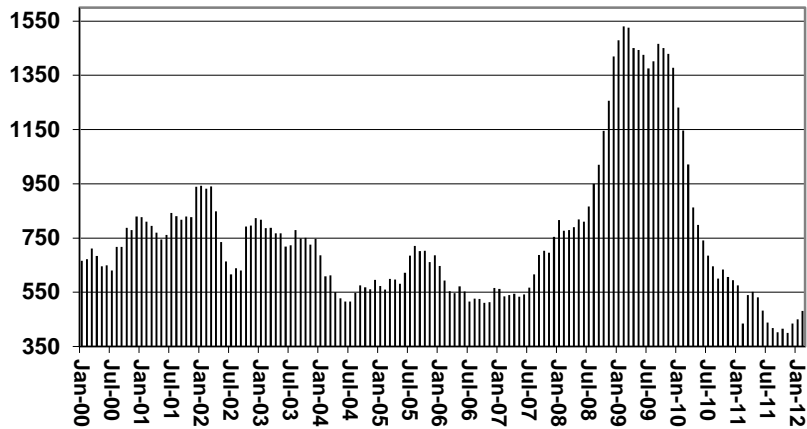
	CURRENT MO. CASES	CURRENT MO. RECIP.	CURRENT MO. DOLLARS	PRIOR MO. CASES	PRIOR MO. RECIP.	PRIOR MO. DOLLARS
PASQUAYYAQUI	3	14	\$1,215	0	0	\$0
WM APACHE	0	0	\$0	0	0	\$0
SALT RIVER	0	0	\$0	0	0	\$0
SAN CARLOS	1	3	\$97	0	0	\$0
HOPI	0	0	\$0	0	0	\$0
TOTAL	4	17	\$1,312	0	0	\$0

CHART 1A

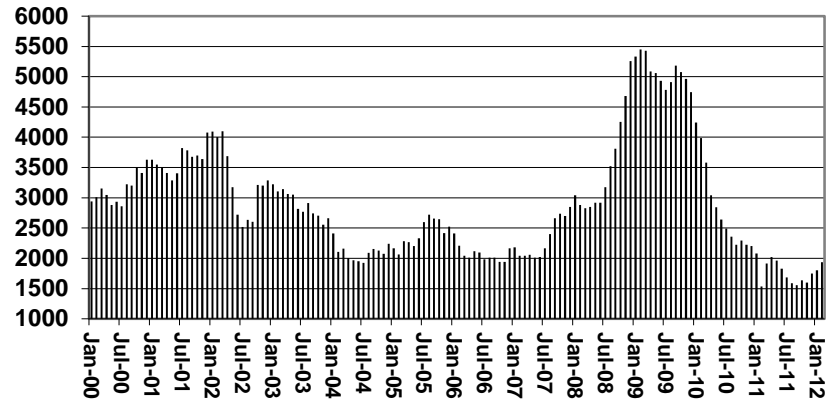
CASH ASSISTANCE UNEMPLOYED PARENT PROGRAM

COMPARISON OF CASES, RECIPIENTS, PAYMENTS & AVERAGE PAYMENTS FOR 2000, 2001, 2002, 2003, 2004, 2005, 2006, 2007, 2008, 2009, 2010, 2011, & 2012

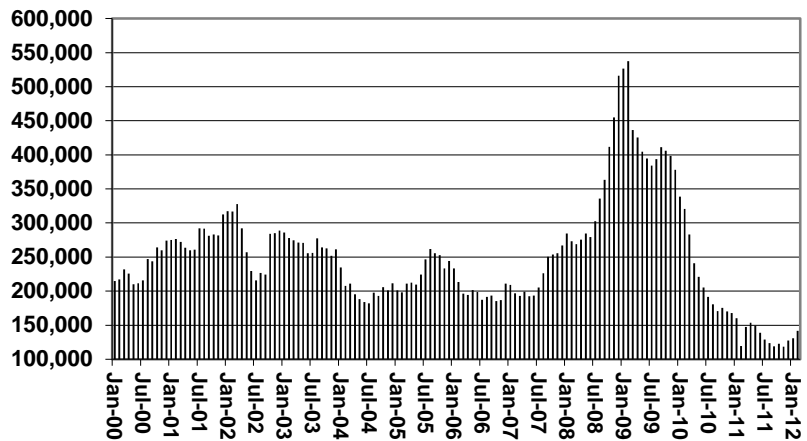
Cases



Recipients



Payments



Average Payment Per Recipient

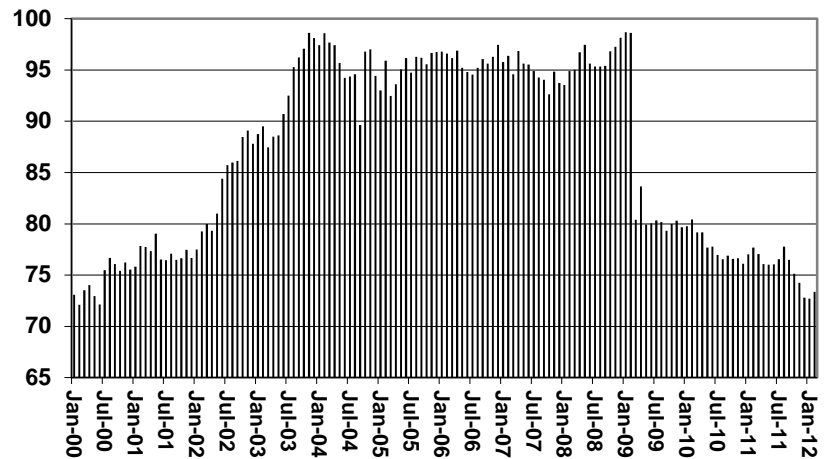


TABLE 1B 1/

CASH ASSISTANCE: ARIZONA
CASES WITH GRANT UNDER \$100

	FEBRUARY 2012							CHANGE FROM			FEBRUARY 2011		
	FAMILIES (CASES)	PERSONS (RECIP.)	ADULTS	CHILDREN	TOTAL PAYMENTS	AVERAGE PAYMENT/ CASE	AVERAGE PAYMENT/ RECIP.	JANUARY 2012			FEBRUARY 2011		
								FAMILIES (CASES)	PERSONS (RECIP.)	TOTAL PAYMENTS	FAMILIES (CASES)	PERSONS (RECIP.)	TOTAL PAYMENTS
ARIZONA	573	1,219	324	895	42,543	74.25	34.90	(106)	(216)	(8,201)	116	262	7,870
REGION													
MARICOPA	365	796	203	593	27,017	74.02	33.94	(81)	(164)	(5,687)	77	182	5,649
NORTHERN	32	62	20	42	2,428	75.88	39.16	(7)	(22)	(565)	14	25	722
APACHE	0	0	0	0	0	0.00	0.00	(1)	(2)	(100)	(1)	(4)	(92)
COCONINO	7	11	5	6	557	79.57	50.64	2	1	228	6	9	465
MOHAVE	17	37	10	27	1,205	70.88	32.57	(4)	(11)	(448)	8	20	248
NAVAJO	8	14	5	9	666	83.25	47.57	(4)	(10)	(245)	1	0	101
CENTRAL	55	123	35	88	4,060	73.82	33.01	(16)	(26)	(1,254)	11	41	839
GILA	2	3	1	2	185	92.50	61.67	(1)	(2)	(82)	0	(1)	(126)
LA PAZ	4	10	2	8	267	66.75	26.70	0	3	14	1	4	106
PINAL	24	52	16	36	1,902	79.25	36.58	(4)	(5)	(332)	3	13	197
YAVAPAI	9	21	5	16	571	63.44	27.19	(5)	(10)	(692)	1	8	144
YUMA	16	37	11	26	1,135	70.94	30.68	(6)	(12)	(162)	6	17	518
SOUTHERN	121	238	66	172	9,038	74.69	37.97	(2)	(4)	(695)	14	14	660
COCHISE	10	23	5	18	922	92.20	40.09	1	5	96	(2)	4	26
GRAHAM	2	3	1	2	160	80.00	53.33	1	(1)	37	(2)	(4)	(55)
GREENLEE	1	2	1	1	157	157.00	78.50	1	2	157	0	0	112
PIMA	103	203	57	146	7,281	70.69	35.87	(2)	(1)	(917)	18	19	460
SANTA CRUZ	5	7	2	5	518	103.60	74.00	(3)	(9)	(68)	0	(5)	117

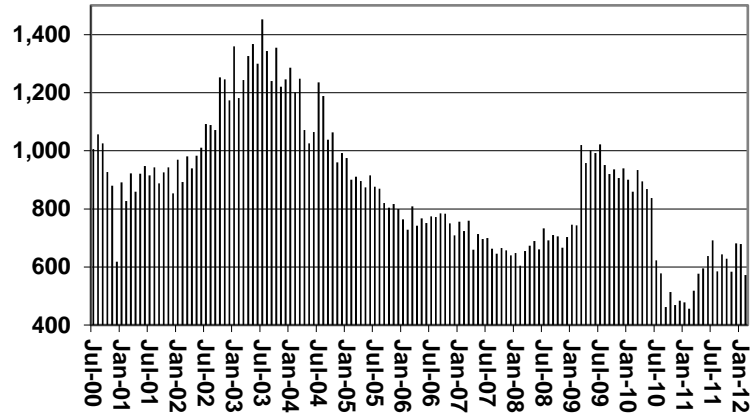
EXCLUDES: PRIOR MONTH NET TOTALS OF 378 CASES; 857 RECIPIENTS; \$24,658.

CHART 1B

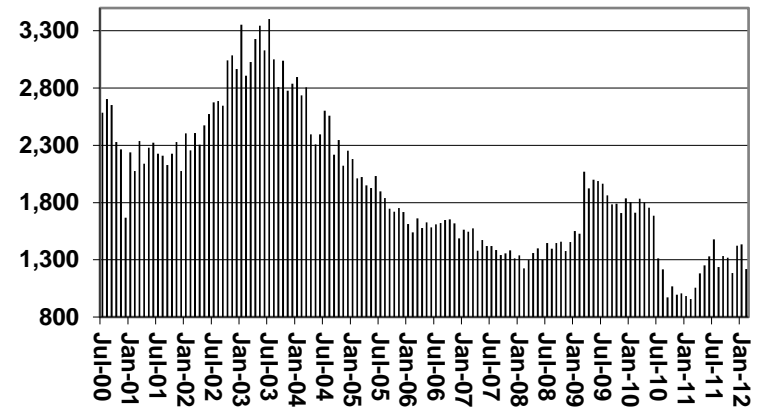
CASH ASSISTANCE PROGRAM CASES WITH GRANT UNDER \$100

FOR 2000, 2001, 2002, 2003, 2004, 2005, 2006, 2007, 2008, 2009, 2010, 2011, & 2012

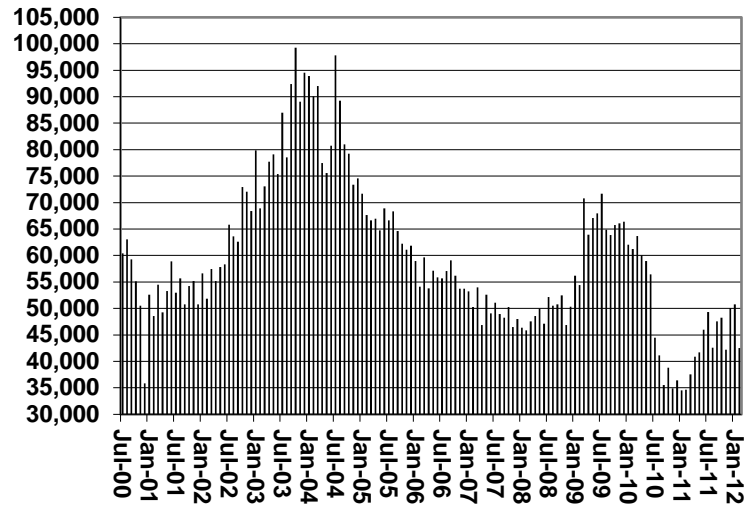
Cases



Recipients



Payments



Average Payment Per Recipient

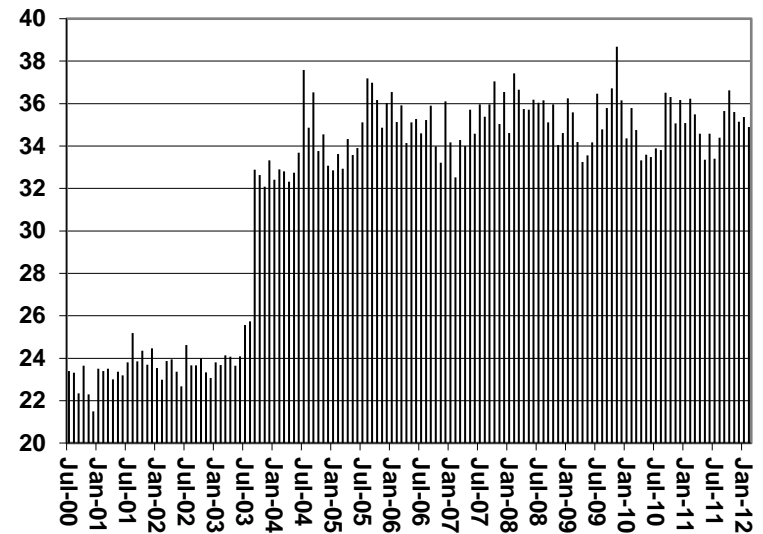


TABLE 1C 1/

CASH ASSISTANCE UNEMPLOYED PARENT PROGRAM: ARIZONA
 CASES WITH GRANT UNDER \$100

	FEBRUARY 2012							CHANGE FROM			FEBRUARY 2011		
								JANUARY 2012					
	FAMILIES (CASES)	PERSONS (RECIP.)	ADULTS	CHILDREN	TOTAL PAYMENTS	AVERAGE PAYMENT/ CASE	AVERAGE PAYMENT/ RECIP.	FAMILIES (CASES)	PERSONS (RECIP.)	TOTAL PAYMENTS	FAMILIES (CASES)	PERSONS (RECIP.)	TOTAL PAYMENTS
ARIZONA	10	42	18	24	595	59.50	14.17	(3)	(9)	(282)	(13)	(18)	(830)
REGION													
MARICOPA	7	28	12	16	483	69.00	17.25	2	10	150	(15)	(29)	(873)
NORTHERN	0	0	0	0	0	0.00	0.00	(2)	(8)	(144)	0	0	0
APACHE	0	0	0	0	0	0.00	0.00	(1)	(3)	(52)	0	0	0
COCONINO	0	0	0	0	0	0.00	0.00	0	0	0	0	0	0
MOHAVE	0	0	0	0	0	0.00	0.00	0	0	0	0	0	0
NAVAJO	0	0	0	0	0	0.00	0.00	(1)	(5)	(92)	0	0	0
CENTRAL	1	4	2	2	31	31.00	7.75	(2)	(6)	(122)	1	4	31
GILA	0	0	0	0	0	0.00	0.00	0	0	0	0	0	0
LA PAZ	0	0	0	0	0	0.00	0.00	0	0	0	0	0	0
PINAL	0	0	0	0	0	0.00	0.00	(1)	(4)	(34)	0	0	0
YAVAPAI	0	0	0	0	0	0.00	0.00	0	0	0	0	0	0
YUMA	1	4	2	2	31	31.00	7.75	(1)	(2)	(88)	1	4	31
SOUTHERN	2	10	4	6	81	40.50	8.10	(1)	(5)	(166)	1	7	12
COCHISE	1	3	2	1	71	71.00	23.67	1	3	71	1	3	71
GRAHAM	0	0	0	0	0	0.00	0.00	0	0	0	0	0	0
GREENLEE	1	7	2	5	10	10.00	1.43	0	(1)	(57)	1	7	10
PIMA	0	0	0	0	0	0.00	0.00	(2)	(7)	(180)	(1)	(3)	(69)
SANTA CRUZ	0	0	0	0	0	0.00	0.00	0	0	0	0	0	0

EXCLUDES: PRIOR MONTH NET TOTALS OF 33 CASES; 121 RECIPIENTS; \$1,621.

CHART 1C

CASH ASSISTANCE UNEMPLOYED PARENT PROGRAM

CASES WITH GRANT UNDER \$100

FOR 2000, 2001, 2002, 2003, 2004, 2005, 2006, 2007, 2008, 2009, 2010, 2011, & 2012

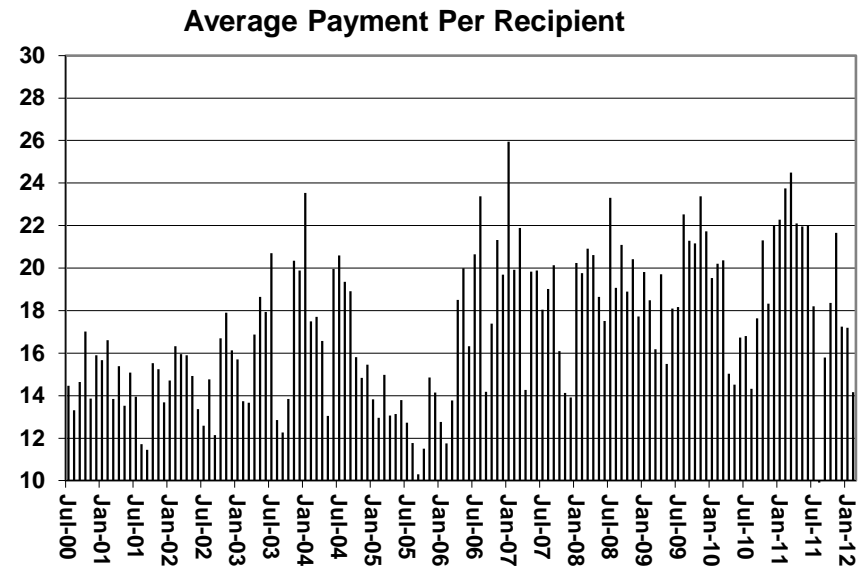
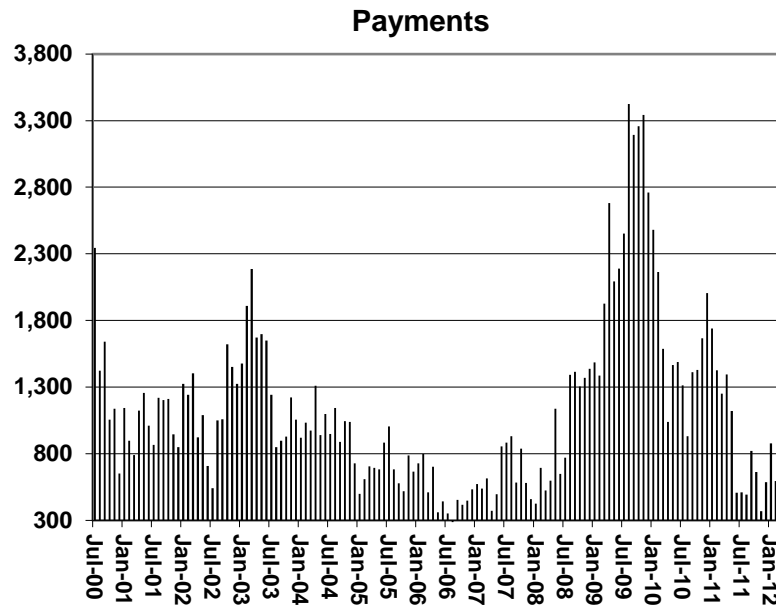
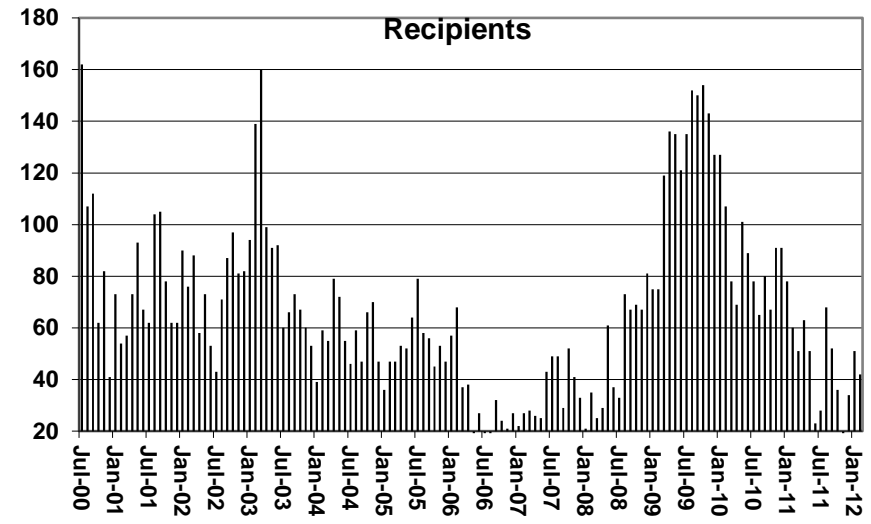
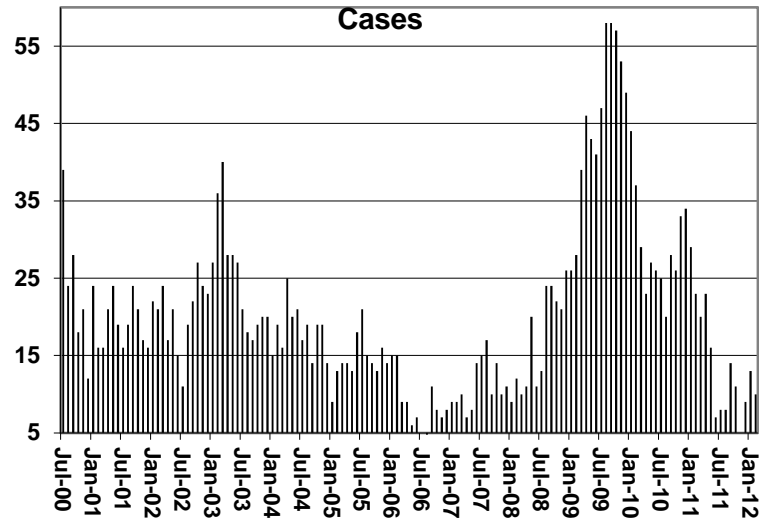


TABLE 4
TUBERCULOSIS CONTROL: ARIZONA 1/

	FEBRUARY 2012					CHANGE FROM			FEBRUARY 2011		
	NUMBER OF CASES	PERSONS (RECIP.)	TOTAL PAYMENTS	AVERAGE PAYMENT/ CASE	AVERAGE PAYMENT/ RECIP.	JANUARY 2012			FEBRUARY 2011		
						NUMBER OF CASES	PERSONS (RECIP.)	TOTAL PAYMENTS	NUMBER OF CASES	PERSONS (RECIP.)	TOTAL PAYMENTS
ARIZONA	5	5	620	124.00	124.00	(1)	(1)	(108)	2	2	231
REGION											
MARICOPA	4	4	562	140.50	140.50	(1)	(1)	(108)	1	1	173
NORTHERN	1	1	58	58.00	58.00	0	0	0	1	1	58
APACHE	0	0	0	0.00	0.00	0	0	0	0	0	0
COCONINO	0	0	0	0.00	0.00	0	0	0	0	0	0
MOHAVE	1	1	58	58.00	58.00	0	0	0	1	1	58
NAVAJO	0	0	0	0.00	0.00	0	0	0	0	0	0
CENTRAL	0	0	0	0.00	0.00	0	0	0	0	0	0
GILA	0	0	0	0.00	0.00	0	0	0	0	0	0
LA PAZ	0	0	0	0.00	0.00	0	0	0	0	0	0
PINAL	0	0	0	0.00	0.00	0	0	0	0	0	0
YAVAPAI	0	0	0	0.00	0.00	0	0	0	0	0	0
YUMA	0	0	0	0.00	0.00	0	0	0	0	0	0
SOUTHERN	0	0	0	0.00	0.00	0	0	0	0	0	0
COCHISE	0	0	0	0.00	0.00	0	0	0	0	0	0
GRAHAM	0	0	0	0.00	0.00	0	0	0	0	0	0
GREENLEE	0	0	0	0.00	0.00	0	0	0	0	0	0
PIMA	0	0	0	0.00	0.00	0	0	0	0	0	0
SANTA CRUZ	0	0	0	0.00	0.00	0	0	0	0	0	0

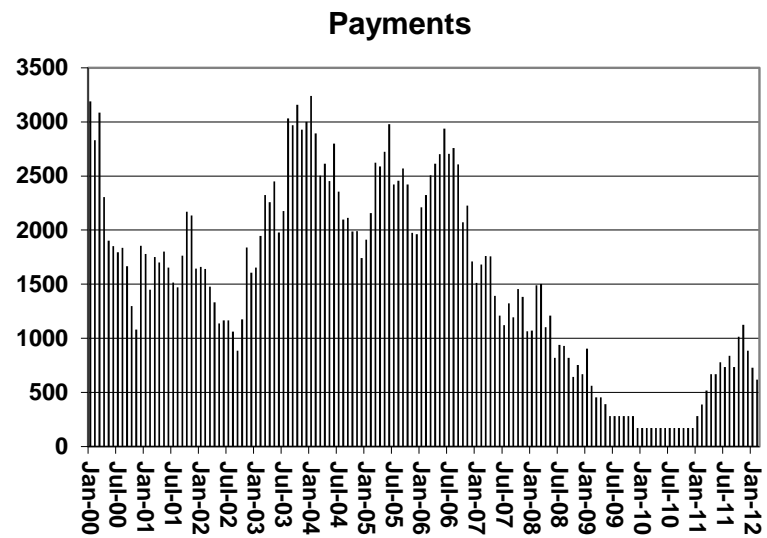
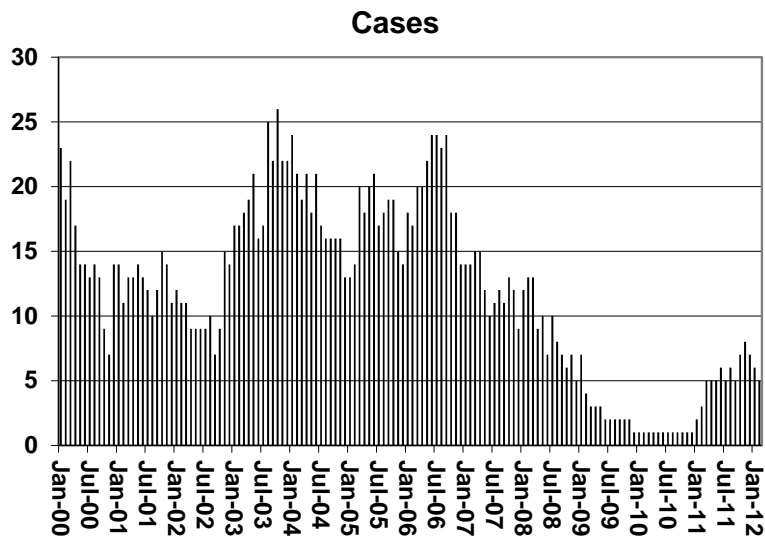
1/EXCLUDES: PRIOR MONTH NET TOTALS OF : 0 CASES; 0 RECIPIENTS; \$0.

CHART 4

TUBERCULOSIS CONTROL PROGRAM

COMPARISON OF CASES, PAYMENTS & AVERAGE PAYMENTS

FOR 2000, 2001, 2002, 2003, 2004, 2005, 2006, 2007, 2008, 2009, 2010, 2011, & 2012



Average Payment Per Case

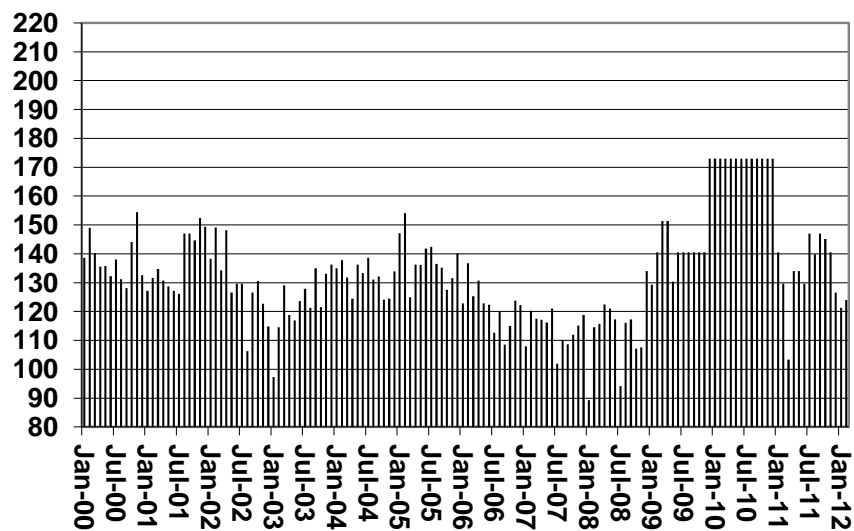


TABLE 6

SUPPLEMENTAL NUTRITION ASSISTANCE PROGRAM: ARIZONA 1/

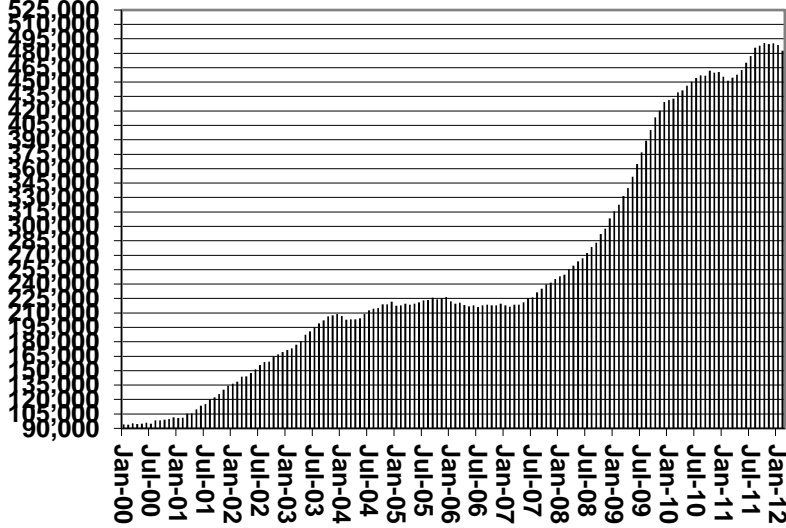
	CHANGE FROM												
	FEBRUARY 2012							JANUARY 2012			FEBRUARY 2011		
	HOUSEHOLDS	PERSONS	ADULTS	CHILDREN	TOTAL PAYMENTS ISSUANCE	AVERAGE PAYMT./ HOUSEHOLD	AVERAGE PAYMT./ PERSON	HOUSEHOLDS	PERSONS	TOTAL PAYMENTS ISSUANCE	HOUSEHOLDS	PERSONS	TOTAL PAYMENTS ISSUANCE
ARIZONA	482,617	1,118,039	572,745	545,294	140,023,354	290.13	125.24	(5,911)	(13,654)	(3,286,539)	31,070	87,900	8,984,133
REGION													
MARICOPA	259,411	607,091	289,815	317,276	76,965,323	296.69	126.78	(3,438)	(7,975)	(1,890,882)	18,625	53,962	6,179,570
NORTHERN	56,589	136,329	77,125	59,204	16,901,690	298.67	123.98	(366)	(833)	(233,150)	4,079	9,573	1,001,150
APACHE	10,692	28,955	15,901	13,054	3,569,825	333.88	123.29	(27)	55	(6,872)	785	1,675	184,894
COCONINO	10,357	25,252	13,586	11,666	3,153,752	304.50	124.89	(59)	(243)	(47,576)	909	1,958	259,179
MOHAVE	21,474	45,819	27,560	18,259	5,680,718	264.54	123.98	(195)	(303)	(124,985)	1,271	3,273	273,466
NAVAJO	14,066	36,303	20,078	16,225	4,497,395	319.74	123.88	(85)	(342)	(53,717)	1,114	2,667	283,611
CENTRAL	63,807	151,149	81,820	69,329	18,188,733	285.06	120.34	(885)	(2,303)	(467,847)	4,529	13,416	1,092,451
GILA	6,230	13,720	7,946	5,774	1,765,996	283.47	128.72	(99)	(187)	(36,856)	162	647	54,962
LA PAZ	2,073	4,228	2,467	1,761	542,619	261.76	128.34	(16)	(42)	(6,312)	62	137	10,691
PINAL	23,411	58,566	30,143	28,423	7,281,451	311.03	124.33	(195)	(471)	(132,568)	1,864	6,006	578,342
YAVAPAI	15,967	32,226	19,336	12,890	3,959,429	247.98	122.86	(74)	(227)	(69,071)	1,208	2,465	251,661
YUMA	16,126	42,409	21,928	20,481	4,639,238	287.69	109.39	(501)	(1,376)	(223,040)	1,233	4,161	196,795
SOUTHERN	102,810	223,470	123,985	99,485	27,967,608	272.03	125.15	(1,222)	(2,543)	(694,660)	3,837	10,949	710,962
COCHISE	11,097	24,103	13,799	10,304	2,898,227	261.17	120.24	(117)	(264)	(64,958)	593	1,552	77,478
GRAHAM	3,510	8,049	4,471	3,578	990,644	282.23	123.08	(35)	(73)	(16,810)	79	171	(24,315)
GREENLEE	537	1,183	673	510	152,093	283.23	128.57	(7)	(6)	(1,817)	46	101	16,727
PIMA	82,981	177,607	98,617	78,990	22,477,044	270.87	126.55	(1,018)	(2,097)	(573,390)	2,847	8,323	588,352
SANTA CRUZ	4,685	12,528	6,425	6,103	1,449,600	309.41	115.71	(45)	(103)	(37,685)	272	802	52,720

1/EXCLUDES: PRIOR MONTH NET TOTALS OF : 7,233 CASES; 19,097 RECIPIENTS; \$1,149,770.
 AGED CANCELATIONS: 1,529 CASES; 14,632 RECIPIENTS; \$591,752.
 SNAP CONVERSIONS: 0 CASES; 0 RECIPIENTS; \$0.
 SNAP CHILD ONLY: 63,023 CASES; 149,451 RECIPIENTS; \$22,701,629.
 SNAP ZERO PAY: 3,448 CASES; 12,687 RECIPIENTS.

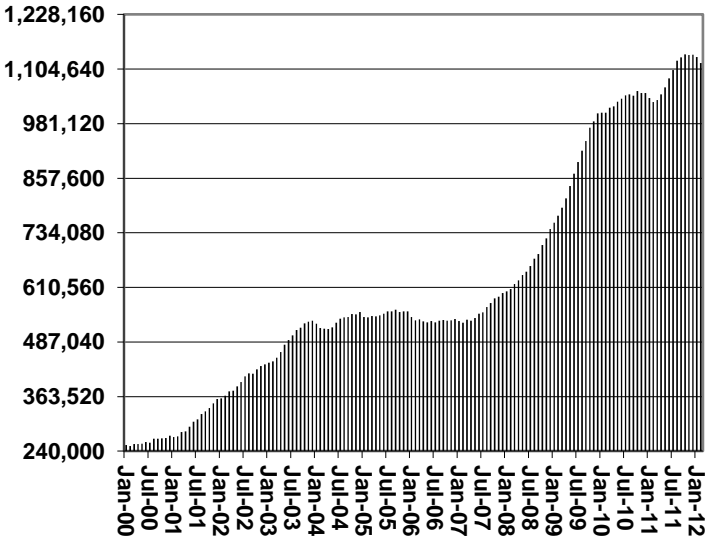
CHART 6

SUPPLEMENTAL NUTRITION ASSISTANCE PROGRAM (SNAP) COMPARISON OF HOUSEHOLDS, RECIPIENTS, PAYMENTS & AVERAGE PAYMENTS FOR 2000, 2001, 2002, 2003, 2004, 2005, 2006, 2007, 2008, 2009, 2010, 2011, & 2012

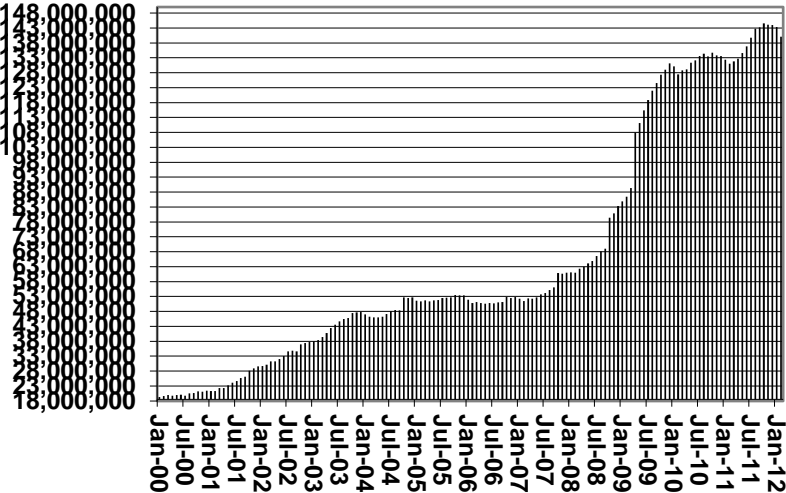
Households



Recipients



Payments



Average Payment Per Household

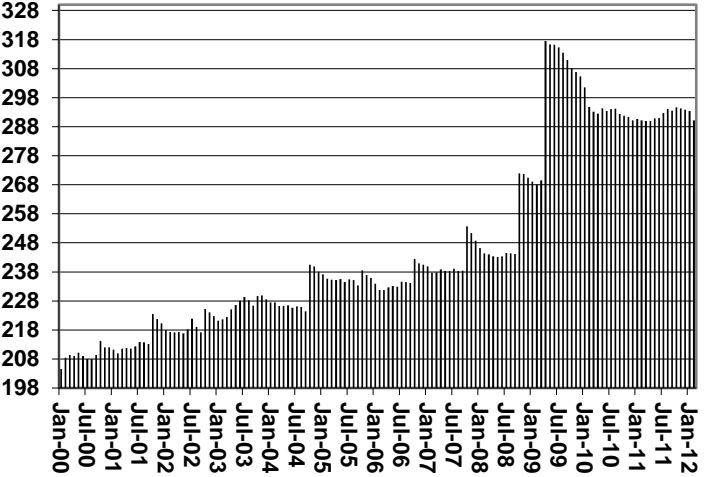


TABLE 7A
MEDICAL ASSISTANCE PROGRAM
RECIPIENTS
FEBRUARY 2012

	SOBRA WOMAN 133% FPL	SOBRA CHILD	ADULT W/O CHILD 100% FPL	FOSTER CARE	1931 36% FPL	FEDERAL EMERGENCY SERVICES	INFANTS	ADULT W/O CHILD 40% FPL	MEDICAL W/SPEND DOWN	SOBRA WOMAN 100% FPL	SOBRA CHILD 100% FPL	TRANSITIONAL MEDICAL T1 - T4	1931 100% FPL	YATI	OTHER	TOTAL CASES
ARIZONA	11,445	53,385	36,572	14,050	371,143	61,327	45,556	108,823	0	4,213	241,458	51,822	122,690	359	29,033	1,151,876
REGION																
MARICOPA	6,522	30,733	18,017	7,860	208,274	49,464	27,470	54,387	0	2,326	144,693	26,312	64,365	184	15,195	655,802
NORTHERN	1,227	5,306	4,262	684	48,180	1,133	4,510	17,064	0	492	23,296	5,398	14,513	25	2,986	129,076
APACHE	179	1,061	603	41	12,372	73	860	4,148	0	84	4,042	1,056	2,509	0	387	27,415
COCONINO	271	997	802	130	9,103	469	1,063	2,838	0	113	4,816	1,127	2,938	14	435	25,116
MOHAVE	438	1,680	1,859	355	12,592	368	1,392	5,212	0	176	8,732	1,875	5,293	9	1,624	41,605
NAVAJO	339	1,568	998	158	14,113	223	1,195	4,866	0	119	5,706	1,340	3,773	2	540	34,940
CENTRAL	1,735	7,341	5,414	1,603	47,278	3,781	5,852	14,185	0	645	30,017	9,636	18,023	46	4,428	149,984
GILA	115	451	446	107	4,903	106	475	1,771	0	48	1,991	505	1,320	3	347	12,588
LA PAZ	43	173	169	29	1,362	114	127	511	0	13	693	147	348	1	173	3,903
PINAL	586	3,168	1,563	614	21,085	1,267	2,216	5,557	0	239	11,320	2,508	6,386	19	1,357	57,885
YAVAPAI	439	1,525	1,618	546	8,411	1,175	1,108	3,199	0	123	6,433	1,775	3,922	21	1,214	31,509
YUMA	552	2,024	1,618	307	11,517	1,119	1,926	3,147	0	222	9,580	4,701	6,047	2	1,337	44,099
SOUTHERN	1,961	10,005	8,879	3,903	67,411	6,949	7,724	23,187	0	750	43,452	10,476	25,789	104	6,424	217,014
COCHISE	203	947	1,093	254	7,281	415	754	2,132	0	72	4,402	1,060	2,783	6	873	22,275
GRAHAM	94	349	291	86	2,783	22	367	939	0	34	1,440	431	896	1	173	7,906
GREENLEE	16	42	41	10	491	6	57	161	0	4	200	40	102	1	29	1,200
PIMA	1,548	8,141	6,881	3,518	53,284	6,075	6,131	19,001	0	592	34,353	8,169	20,063	96	4,885	172,737
SANTA CRUZ	100	526	573	35	3,572	431	415	954	0	48	3,057	776	1,945	0	464	12,896

TABLE 7B
MEDICAL ASSISTANCE PROGRAM
RECIPIENTS

CHANGE FROM

JANUARY 2012

	SOBRA WOMAN 133% FPL	SOBRA CHILD	ADULT W/O CHILD 100% FPL	FOSTER CARE	1931 36% FPL	FEDERAL EMERGENCY SERVICES	INFANTS	ADULT W/O CHILD 40% FPL	MEDICAL W/SPEND DOWN	SOBRA WOMAN 100% FPL	SOBRA CHILD 100% FPL	TRANSITIONAL MEDICAL T1 - T4	1931 100% FPL	YATI	OTHER	TOTAL CASES
ARIZONA	103	(912)	(2,480)	20	(1,064)	1,085	(38)	(5,570)	0	23	(957)	310	(486)	19	(134)	(10,081)
REGION																
MARICOPA	(6)	(372)	(1,274)	13	(803)	994	(1)	(3,037)	0	53	(374)	(28)	(102)	7	(55)	(4,985)
NORTHERN	(3)	(249)	(332)	13	212	32	(48)	(757)	0	9	(324)	(144)	(112)	4	1	(1,698)
APACHE	(9)	(31)	(41)	0	134	12	3	(154)	0	3	(7)	(28)	(24)	0	(24)	(166)
COCONINO	4	(57)	(52)	0	(24)	13	(7)	(140)	0	9	(146)	(43)	(54)	1	6	(490)
MOHAVE	(3)	(83)	(146)	4	(25)	3	(34)	(256)	0	(5)	(38)	(42)	10	3	23	(589)
NAVAJO	5	(78)	(93)	9	127	4	(10)	(207)	0	2	(133)	(31)	(44)	0	(4)	(453)
CENTRAL	44	(49)	(296)	(2)	(377)	36	14	(690)	0	1	2	451	(148)	6	(9)	(1,017)
GILA	(2)	(31)	(24)	2	(38)	6	0	(64)	0	(2)	1	4	(22)	0	(13)	(183)
LA PAZ	4	(5)	(8)	0	(44)	(3)	(6)	(20)	0	1	30	(5)	0	1	4	(51)
PINAL	20	29	(82)	(4)	157	55	4	(259)	0	(1)	105	(14)	83	3	2	98
YAVAPAI	36	(2)	(104)	5	(22)	12	(11)	(156)	0	(2)	125	(74)	51	1	(19)	(160)
YUMA	(14)	(40)	(78)	(5)	(430)	(34)	27	(191)	0	5	(259)	540	(260)	1	17	(721)
SOUTHERN	68	(242)	(578)	(4)	(96)	23	(3)	(1,086)	0	(40)	(261)	31	(124)	2	(71)	(2,381)
COCHISE	7	(56)	(86)	(2)	28	5	(8)	(104)	0	(6)	(35)	(33)	2	0	(7)	(295)
GRAHAM	7	(11)	(30)	(1)	(18)	(1)	8	(39)	0	(6)	(13)	15	16	0	6	(67)
GREENLEE	(3)	1	(3)	1	(11)	0	0	(8)	0	(1)	(10)	6	4	0	(1)	(25)
PIMA	59	(171)	(422)	(1)	(74)	8	12	(914)	0	(25)	(164)	37	(138)	2	(70)	(1,861)
SANTA CRUZ	(2)	(5)	(37)	(1)	(21)	11	(15)	(21)	0	(2)	(39)	6	(8)	0	1	(133)

TABLE 7C
MEDICAL ASSISTANCE PROGRAM
RECIPIENTS

CHANGE FROM
FEBRUARY 2011

	SOBRA WOMAN 133% FPL	SOBRA CHILD	ADULT W/O CHILD 100% FPL	FOSTER CARE	1931 36% FPL	FEDERAL EMERGENCY SERVICES	INFANTS	ADULT W/O CHILD 40% FPL	MEDICAL W/SPEND DOWN	SOBRA WOMAN 100% FPL	SOBRA CHILD 100% FPL	TRANSITIONAL MEDICAL T1 - T4	3E 1931 100% FPL	YATI	OTHER	TOTAL CASES
ARIZONA	975	(16,352)	(27,204)	1,525	37,282	11,310	(269)	(63,812)	(7,151)	494	12,497	5,514	(1,821)	15	238	(46,759)
REGION																
MARICOPA	985	(9,062)	(13,348)	1,115	23,066	10,688	152	(33,078)	(3,933)	426	10,561	3,973	(405)	(9)	360	(8,509)
NORTHERN	(3)	(2,290)	(3,436)	35	4,230	14	(145)	(8,643)	(909)	(34)	111	168	(368)	8	(118)	(11,380)
APACHE	(29)	(441)	(461)	6	859	(7)	(63)	(1,708)	(139)	(26)	(104)	133	(139)	0	(30)	(2,149)
COCONINO	(35)	(476)	(885)	3	664	54	6	(1,796)	(122)	13	33	(38)	(78)	2	(17)	(2,672)
MOHAVE	64	(645)	(1,235)	15	919	(44)	(25)	(2,985)	(458)	8	396	(7)	(40)	6	(9)	(4,040)
NAVAJO	(3)	(728)	(855)	11	1,788	11	(63)	(2,154)	(190)	(29)	(214)	80	(111)	0	(62)	(2,519)
CENTRAL	53	(1,998)	(4,225)	121	4,871	64	(96)	(8,200)	(1,065)	79	1,034	1,075	(409)	4	32	(8,660)
GILA	(1)	(222)	(367)	8	336	(16)	(36)	(919)	(128)	13	(24)	77	(37)	1	(20)	(1,335)
LA PAZ	14	(88)	(108)	12	75	(19)	(22)	(341)	(21)	0	(24)	(7)	(74)	1	10	(592)
PINAL	(5)	(944)	(1,336)	33	2,879	72	4	(3,102)	(348)	59	710	255	154	1	27	(1,541)
YAVAPAI	27	(207)	(1,184)	59	1,044	4	(20)	(2,082)	(289)	(8)	98	160	(293)	2	(6)	(2,695)
YUMA	18	(537)	(1,230)	9	537	23	(22)	(1,756)	(279)	15	274	590	(159)	(1)	21	(2,497)
SOUTHERN	(60)	(3,002)	(6,195)	254	5,115	544	(180)	(13,891)	(1,244)	23	791	298	(639)	12	(36)	(18,210)
COCHISE	(28)	(353)	(736)	12	415	(36)	(42)	(1,231)	(161)	(15)	16	92	(58)	2	(56)	(2,179)
GRAHAM	(19)	(131)	(207)	18	24	(2)	28	(550)	(64)	14	19	28	(5)	(1)	5	(843)
GREENLEE	3	(11)	(19)	2	62	3	10	(60)	(5)	(4)	(36)	(25)	(6)	(1)	(5)	(92)
PIMA	(6)	(2,377)	(4,870)	217	4,491	587	(140)	(11,805)	(935)	25	864	60	(548)	13	28	(14,396)
SANTA CRUZ	(10)	(130)	(363)	5	123	(8)	(36)	(245)	(79)	3	(72)	143	(22)	(1)	(8)	(700)

CHART 7

MEDICAL ASSISTANCE PROGRAM

COMPARISON OF RECIPIENTS

FOR 2000, 2001, 2002, 2003, 2004, 2005, 2006, 2007, 2008, 2009, 2010, 2011, & 2012

Total Recipients

