



DEPARTMENT OF ECONOMIC SECURITY

Your Partner For A Stronger Arizona

State of Arizona

Department of Economic Security

Family Assistance Administration

Statistical Bulletin

March, 2012

Phone: (602) 542-3678

<http://www.azdes.gov/appreports.aspx>

**** STATISTICAL BULLETIN ****
ARIZONA DEPARTMENT OF ECONOMIC SECURITY
FAMILY ASSISTANCE ADMINISTRATION
BOX 6123, PHOENIX, ARIZONA 85005
PHONE (602) 542-3678

MARCH 2012

THIS ISSUE OF THE STATISTICAL BULLETIN COMPARES MARCH 2012 DATA FOR EACH OF THE INDICATED PROGRAMS WITH THE INFORMATION FOR FEBRUARY 2012 AND MARCH 2011. STATEWIDE SUMMARIES OF ACTIVITY WITHIN EACH OF THE SPECIFIC PROGRAMS FOR THIS REPORT PERIOD ARE DISCUSSED BELOW. THE TABLES COMPARE CURRENT AND PRIOR MONTH DATA. DISTRICT AND COUNTY COMPARISONS ARE PROVIDED WITHIN THIS BULLETIN

TANF SUMMARY

COMPARING TO FEBRUARY 2012, MARCH 2012 CASES DECREASED BY 13 (0.07%) TO 17,355. RECIPIENTS DECREASED BY 214 (0.54%) TO 39,240. PAYMENTS DECREASED BY \$37,597 (1.03%) TO \$3,612,735. AVERAGE PAYMENT PER CASE DECREASED BY \$2.01 (0.96%) TO \$0.00. PAYEMENT PER RECIPIENT DECREASED BY \$0.45 (0.49%) TO \$92.07.

COMPARING TO MARCH 2011, MARCH 2012 CASES DECREASED BY 1,081 (5.86%). RECIPIENTS DECREASED BY 2,312 (5.56%). TOTAL PAYMENTS DECREASED BY \$270,663 (6.97%). THE AVERAGE PAYMENT PER CASE DECREASED BY \$2.47 (1.17%). THE AVERAGE PAYMENT PER RECIPIENT DECREASED BY \$1.39 (1.49%).

CASH ASSISTANCE (CA)

COMPARING TO FEBRUARY 2012, MARCH 2012 CASES DECREASED BY 163 (1.00%) TO 16,141. RECIPIENTS DECREASED BY 399 (1.10%) TO 35,860. PAYMENTS DECREASED BY \$47,826 (1.38%) TO \$3,417,483. AVERAGE PAYMENT PER CASE DECREASED BY \$0.81 (0.38%) TO \$211.73. PAYEMENT PER RECIPIENT DECREASED BY \$0.27 (0.28%) TO \$95.30.

COMPARING TO MARCH 2011, MARCH 2012 CASES DECREASED BY 1,208 (6.96%). RECIPIENTS DECREASED BY 2,648 (6.88%). TOTAL PAYMENTS DECREASED BY \$278,737 (7.54%). THE AVERAGE PAYMENT PER CASE DECREASED BY \$1.32 (0.62%). THE AVERAGE PAYMENT PER RECIPIENT DECREASED BY \$0.69 (0.72%).

CASH ASSISTANCE UNEMPLOYED PARENT PROGRAM (CA-UP)

COMPARING TO FEBRUARY 2012, MARCH 2012 CASES INCREASED BY 17 (3.53%) TO 498. RECIPIENTS DECREASED BY 38 (1.96%) TO 1,896. PAYMENTS INCREASED BY \$1,528 (1.08%) TO \$143,413. AVERAGE PAYMENT PER CASE DECREASED BY \$7.00 (2.37%) TO \$287.98. PAYMENT PER RECIPIENT INCREASED BY \$2.28 (3.10%) TO \$75.64.

COMPARING TO MARCH 2011, MARCH 2012 CASES DECREASED BY 43 (7.95%). RECIPIENTS DECREASED BY 22 (1.15%). TOTAL PAYMENTS DECREASED BY \$4,397 (2.97%). THE AVERAGE PAYMENT PER CASE INCREASED BY \$14.77 (5.41%). THE AVERAGE PAYMENT PER RECIPIENT DECREASED BY \$1.42 (1.85%).

CASH ASSISTANCE WITH GRANT UNDER \$100 (CA-MOE)

COMPARING TO FEBRUARY 2012, MARCH 2012 CASES INCREASED BY 134 (23.39%) TO 707. RECIPIENTS INCREASED BY 235 (19.28%) TO 1,454. PAYMENTS INCREASED BY \$8,725 (20.51%) TO \$51,268. AVERAGE PAYMENT PER CASE DECREASED BY \$1.74 (2.34%) TO \$72.51. AVERAGE PAYMENT PER RECIPIENT INCREASED BY \$0.36 (1.03%) TO \$35.26.

COMPARING TO MARCH 2011, MARCH 2012 CASES INCREASED BY 181 (34.41%). RECIPIENTS INCREASED BY 379 (35.26%). TOTAL PAYMENTS INCREASED BY \$13,149 (34.49%). THE AVERAGE PAYMENT PER CASE INCREASED BY \$0.04 (0.06%). THE AVERAGE PAYMENT PER RECIPIENT DECREASED BY \$0.20 (0.56%).

CASH ASSISTANCE UNEMPLOYED PARENT PROGRAM WITH GRANT UNDER \$100 (CA-UP-MOE) NEW PROGRAM STARTING 7/01

COMPARING TO FEBRUARY 2012, MARCH 2012 CASES DECREASED BY 1 (10.00%) TO 9. RECIPIENTS DECREASED BY 12 (28.57%) TO 30. PAYMENTS DECREASED BY \$24 (4.03%) TO \$571. AVERAGE PAYMENT PER CASE INCREASED BY \$3.94 (6.62%) TO \$63.44. PAYMENT PER RECIPIENT INCREASED BY \$4.86 (34.30%) TO \$19.03.

COMPARING TO MARCH 2011, MARCH 2012 CASES DECREASED BY 11 (55.00%). RECIPIENTS DECREASED BY 21 (3.53%). TOTAL PAYMENTS DECREASED BY \$678 (54.28%). THE AVERAGE PAYMENT PER CASE INCREASED BY \$0.99 (1.59%). THE AVERAGE PAYMENT PER RECIPIENT DECREASED BY \$5.46 (22.29%).

TUBERCULOSIS CONTROL PROGRAM (TC)

COMPARING TO FEBRUARY 2012, MARCH 2012 CASES DECREASED BY 1 (20.00%) TO 4. RECIPIENTS DECREASED BY 1 (20.00%) TO 4. PAYMENTS DECREASED BY \$108 (17.42%) TO \$512. AVERAGE PAYMENT PER CASE INCREASED BY \$84.17 (67.88%) TO \$208.17. AVERAGE PAYMENT PER RECIPIENT INCREASED BY \$4.00 (3.23%) TO \$128.00.

COMPARING TO MARCH 2011, MARCH 2012 CASES DECREASED BY 1 (20.00%). RECIPIENTS DECREASED BY 1 (20.00%). TOTAL PAYMENTS DECREASED BY \$5 (0.97%). THE AVERAGE PAYMENT PER CASE INCREASED BY \$104.77 (101.32%). THE AVERAGE PAYMENT PER RECIPIENT INCREASED BY \$24.60 (23.79%).

SUPPLEMENTAL NUTRITION ASSISTANCE PROGRAM (SNAP)

COMPARING TO FEBRUARY 2012, MARCH 2012 SUPPLEMENTAL NUTRITION ASSISTANCE HOUSEHOLDS INCREASED BY 778 (0.16%) TO 483,395. PERSONS RECEIVING SUPPLEMENTAL NUTRITION ASSISTANCE INCREASED BY 208 (0.02%) TO 1,118,247. TOTAL COUPON ISSUANCE INCREASED BY \$247,233 (0.18%) TO \$140,270,587. THE AVERAGE HOUSEHOLD ALLOTMENT INCREASED BY \$0.05 (0.02%) TO \$290.18. THE AVERAGE ALLOTMENT PER PERSON INCREASED BY \$0.20 (0.16%) TO \$125.44.

COMPARING TO MARCH 2011, MARCH 2012 SUPPLEMENTAL NUTRITION ASSISTANCE HOUSEHOLDS INCREASED BY 27,535 (6.04%). PERSONS RECEIVING SUPPLEMENTAL NUTRITION ASSISTANCE INCREASED BY 80,627 (7.77%). TOTAL COUPON ISSUANCE INCREASED BY \$8,107,222 (6.13%). THE AVERAGE ALLOTMENT PER HOUSEHOLD INCREASED BY \$0.26 (0.09%). THE AVERAGE ALLOTMENT PER PERSON DECREASED BY \$1.93 (1.52%).

MEDICAL ASSISTANCE PROGRAM (MA) NEW TABLE INCLUDES PROP. 204 CATEGORIES

COMPARING TO FEBRUARY 2012, MARCH 2012 TOTAL RECIPIENTS TOTAL RECIPIENTS DECREASED BY 8,816 (0.77%). SOBRA WOMEN AT 140% FPL INCREASED BY 206 (1.80%). SOBRA CHILDREN DECREASED BY 871 (1.63%). ADULTS W/O CHILD AT 100% DECREASED BY 2,217 (6.06%). FOSTER CARE INCREASED BY 203 (0.00%). 1931 AT 36% FPL DECREASED BY 721 (0.00%). EMERGENCY SERVICES INCREASED BY 1,120 (1.83%). INFANTS INCREASED BY 323 (0.71%). ADULT W/O CHILD AT 140% DECREASED BY 4,956 (4.55%). MEDICAL W/SPEND DOWN INCREASED BY 0 (100.00%). SOBRA WOMAN AT 100% DECREASED BY 1 (0.02%). SOBRA CHILD AT 100% DECREASED BY 554 (0.23%). TRANSITIONAL MEDICAL DECREASED BY 845 (1.63%). 1931 AT 100% DECREASED BY 234 (0.19%). YATI DECREASED BY 13 (3.62%). ALL OTHER CATEGORIES DECREASED BY 256 (0.88%).

COMPARING TO MARCH 2011, MARCH 2012 TOTAL RECIPIENTS TOTAL RECIPIENTS DECREASED BY 59,117 (4.92%). SOBRA WOMEN AT 140% FPL INCREASED BY 928 (8.65%). SOBRA CHILDREN DECREASED BY 16,982 (24.44%). ADULTS W/O CHILD AT 100% DECREASED BY 29,766 (46.42%). FOSTER CARE INCREASED BY 1,677 (13.33%). 1931 AT 36% FPL INCREASED BY 36,225 (10.84%). EMERGENCY SERVICES INCREASED BY 12,671 (25.46%). INFANTS DECREASED BY 73 (0.16%). ADULT W/O CHILD AT 140% DECREASED BY 69,143 (39.96%). MEDICAL W/SPEND DOWN DECREASED BY 7,217 (100.00%). SOBRA WOMAN AT 100% INCREASED BY 376 (9.80%). SOBRA CHILD AT 100% INCREASED BY 9,999 (4.33%). TRANSITIONAL MEDICAL INCREASED BY 5,084 (11.08%). 1931 AT 100% DECREASED BY 2,644 (2.11%). YATI INCREASED BY 2 (0.58%). ALL OTHER CATEGORIES DECREASED BY 254 (0.87%).

TANF SUMMARY

TABLES 1, 1A, 1B, & 1C: ARIZONA 1/

	MARCH 2012							CHANGE FROM			FEBRUARY 2012			MARCH 2011		
	FAMILIES (CASES)	PERSONS (RECIP.)	ADULTS	CHILDREN	TOTAL PAYMENTS	AVERAGE PAYMENT/ CASE	AVERAGE PAYMENT/ RECIP.	FAMILIES (CASES)	PERSONS (RECIP.)	TOTAL PAYMENTS	FAMILIES (CASES)	PERSONS (RECIP.)	TOTAL PAYMENTS	FAMILIES (CASES)	PERSONS (RECIP.)	TOTAL PAYMENTS
	ARIZONA	17,355	39,240	10,639	28,601	3,612,735	208.17	92.07	(13)	(214)	(37,597)	(1,081)	(2,312)	(270,663)		
REGION																
MARICOPA	10,760	24,909	6,626	18,283	2,247,733	208.90	90.24	112	200	5,959	(613)	(1,410)	(155,183)			
NORTHERN	1,036	2,312	679	1,633	213,065	205.66	92.16	(16)	(67)	(5,434)	11	42	1,300			
APACHE	46	115	35	80	10,258	223.00	89.20	3	8	445	6	38	2,549			
COCONINO	83	195	56	139	16,762	201.95	85.96	(5)	(19)	(1,486)	7	6	820			
MOHAVE	616	1,309	367	942	125,091	203.07	95.56	3	(10)	(403)	19	47	1,459			
NAVAJO	291	693	221	472	60,954	209.46	87.96	(17)	(46)	(3,990)	(21)	(49)	(3,528)			
CENTRAL	2,009	4,360	1,237	3,123	412,525	205.34	94.62	(35)	(138)	(14,589)	(56)	(77)	(23,259)			
GILA	410	860	303	557	95,032	231.79	110.50	(17)	(57)	(6,297)	(14)	(41)	(9,271)			
LA PAZ	50	113	30	83	9,396	187.92	83.15	(10)	(14)	(1,544)	(21)	(37)	(4,351)			
PINAL	862	1,883	516	1,367	169,682	196.85	90.11	23	32	2,083	(10)	13	(4,940)			
YAVAPAI	298	628	150	478	59,405	199.35	94.59	0	(18)	(1,960)	19	67	5,024			
YUMA	389	876	238	638	79,010	203.11	90.19	(31)	(81)	(6,871)	(30)	(79)	(9,721)			
SOUTHERN	3,550	7,659	2,097	5,562	739,412	208.29	96.54	(74)	(209)	(23,533)	(423)	(867)	(93,521)			
COCHISE	384	770	186	584	77,533	201.91	100.69	(11)	(44)	(4,445)	53	136	10,503			
GRAHAM	196	403	135	268	44,883	228.99	111.37	1	0	(986)	(40)	(64)	(7,546)			
GREENLEE	16	40	12	28	3,124	195.25	78.10	(1)	(2)	(385)	0	3	(336)			
PIMA	2,833	6,186	1,710	4,476	589,157	207.96	95.24	(53)	(125)	(14,236)	(451)	(965)	(98,526)			
SANTA CRUZ	121	260	54	206	24,715	204.26	95.06	(10)	(38)	(3,481)	15	23	2,384			

1/EXCLUDES: PRIOR MONTH NET TOTALS OF 815 CASES; 2,052 RECIPIENTS; \$130,871.

GRANT DIVERSION TOTALS OF: 568 CASES; \$447,681.

ZERO PAY TOTALS OF 1,358 CASES; 4,132 RECIPIENTS.

RRP: 158 CASES; 220 RECIPIENTS; \$28,737.

1/INCLUDES: TANF CHILD ONLY: 9,087 CASES; 15,428 RECIPIENTS; \$1,788,109.

	CURRENT MO. CASES	CURRENT MO. RECIP.	CURRENT MO. DOLLARS	PRIOR MO. CASES	PRIOR MO. RECIP	PRIOR MO. DOLLARS
PASQUAYYAQUI	227	625	\$67,115	9	30	\$1,763
WM APACHE	0	0	\$0	0	0	\$0
SALT RIVER	74	249	\$22,553	3	6	\$312
SAN CARLOS	418	878	\$100,770	9	23	\$1,143
HOPI	96	259	\$21,422	0	0	\$0
TOTAL	815	2,011	\$211,860	21	59	\$3,218

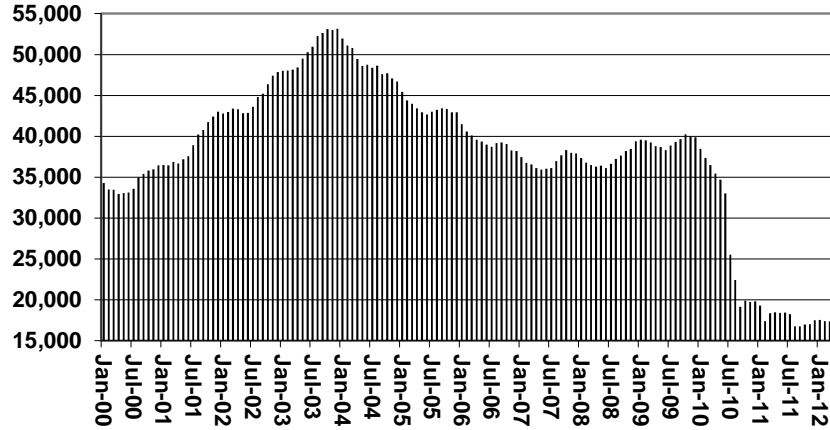
TANF SUMMARY

TABLES 1, 1A, 1B, & 1C

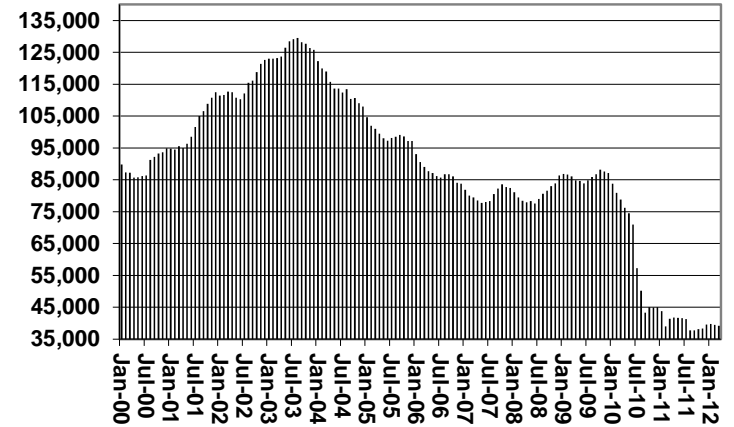
COMPARISON OF CASES, RECIPIENTS, PAYMENTS & AVERAGE PAYMENTS

FOR 2000, 2001, 2002, 2003, 2004, 2005, 2006, 2007, 2008, 2009, 2010, 2011, & 2012

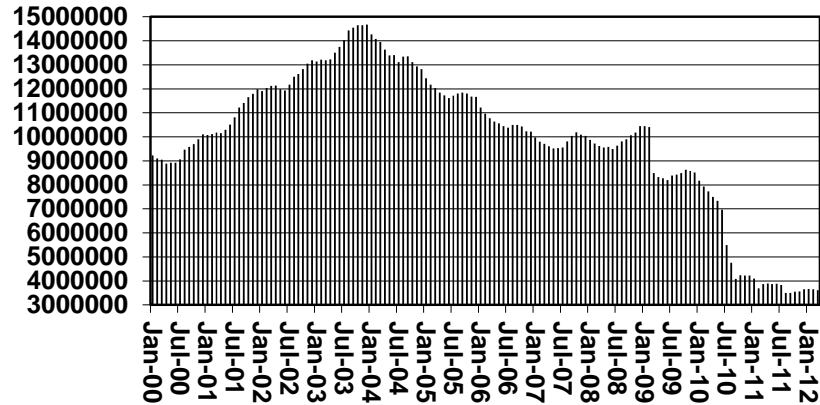
Cases



Recipients



Payments



Average Payments Per Recipient

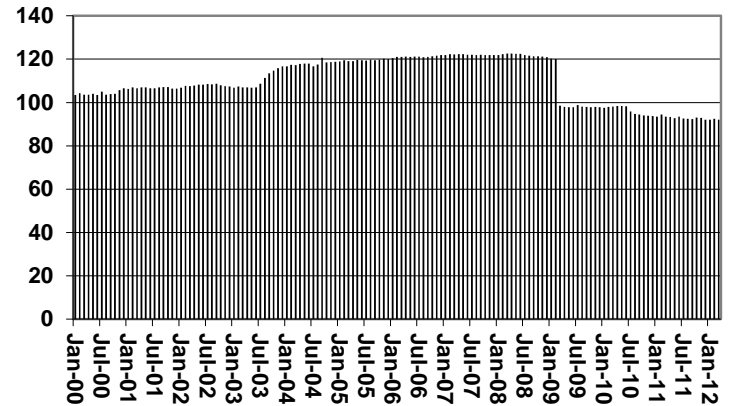


TABLE 1
CASH ASSISTANCE: ARIZONA 1/

	MARCH 2012							CHANGE FROM			FEBRUARY 2012			MARCH 2011		
	FAMILIES	(RECIP.)	ADULTS	CHILDREN	TOTAL	AVERAGE	AVERAGE	FAMILIES	PERSONS	TOTAL	FAMILIES	PERSONS	TOTAL			
	(CASES)				PAYMENTS	PAYMENT/ CASE	PAYMENT/ RECIP.	(CASES)	(RECIP.)	PAYMENTS	(CASES)	(RECIP.)	PAYMENTS			
ARIZONA	16,141	35,860	9,338	26,522	3,417,483	211.73	95.30	(163)	(399)	(47,826)	(1,208)	(2,648)	(278,737)			
REGION																
MARICOPA	10,016	22,822	5,867	16,955	2,129,471	212.61	93.31	18	95	293	(667)	(1,523)	(150,800)			
NORTHERN	960	2,093	579	1,514	198,897	207.18	95.03	(22)	(82)	(7,132)	(13)	(30)	(3,966)			
APACHE	37	87	21	66	8,162	220.59	93.82	1	4	281	0	19	874			
COCONINO	75	175	49	126	15,788	210.51	90.22	(4)	(14)	(1,366)	3	2	279			
MOHAVE	575	1,192	316	876	117,253	203.92	98.37	(4)	(28)	(2,076)	11	20	(270)			
NAVAJO	273	639	193	446	57,694	211.33	90.29	(15)	(44)	(3,971)	(27)	(71)	(4,849)			
CENTRAL	1,858	3,949	1,066	2,883	389,125	209.43	98.54	(26)	(72)	(7,882)	(87)	(202)	(26,313)			
GILA	396	823	280	543	92,425	233.40	112.30	(25)	(77)	(8,157)	(26)	(74)	(11,644)			
LA PAZ	46	105	28	77	9,097	197.76	86.64	(10)	(12)	(1,576)	(17)	(28)	(4,099)			
PINAL	783	1,658	425	1,233	156,680	200.10	94.50	9	17	1,851	(44)	(100)	(10,570)			
YAVAPAI	274	561	126	435	55,604	202.93	99.12	(12)	(48)	(3,957)	17	56	4,758			
YUMA	359	802	207	595	75,319	209.80	93.91	(35)	(78)	(7,038)	(42)	(103)	(10,678)			
SOUTHERN	3,307	6,996	1,826	5,170	699,990	211.67	100.06	(86)	(214)	(22,110)	(416)	(846)	(91,738)			
COCHISE	366	729	171	558	75,682	206.78	103.82	(13)	(43)	(3,944)	51	129	10,893			
GRAHAM	187	379	121	258	43,158	230.79	113.87	0	(1)	(770)	(46)	(80)	(8,753)			
GREENLEE	14	30	8	22	2,817	201.21	93.90	0	0	(316)	(2)	(7)	(643)			
PIMA	2,629	5,613	1,476	4,137	554,435	210.89	98.78	(61)	(136)	(14,304)	(430)	(920)	(96,228)			
SANTA CRUZ	111	245	50	195	23,898	215.30	97.54	(12)	(34)	(2,776)	11	32	2,993			

1/EXCLUDES: PRIOR MONTH NET TOTALS OF: 326 CASES; 838 RECIPIENTS; \$92,601.
GRANT DIVERSION TOTALS OF: 568 CASES; \$447,681.
ZERO PAY TOTALS OF 1,349 CASES; 4,099 RECIPIENTS.

CASES WITH GRANT UNDER \$100 (SEE TABLE 1B).

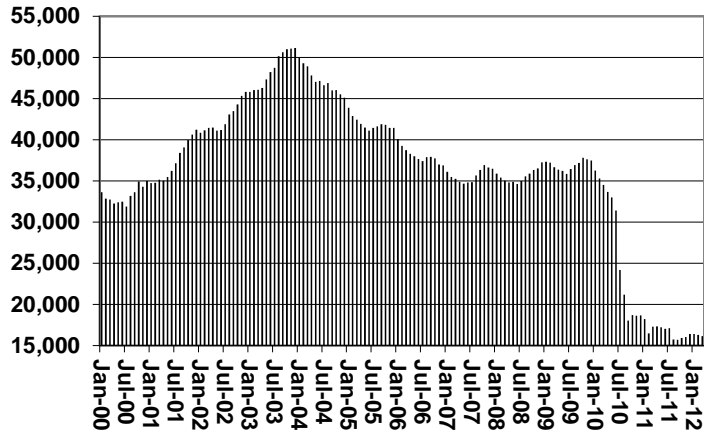
	CURRENT MO. CASES	CURRENT MO. RECIP.	CURRENT MO. DOLLARS	PRIOR MO. CASES	PRIOR MO. RECIP.	PRIOR MO. DOLLARS
PASQUAYAQUI	224	607	\$65,963	8	22	\$1,519
WM APACHE	0	0	\$0	0	0	\$0
SALT RIVER	74	249	\$22,553	3	6	\$312
SAN CARLOS	408	849	\$98,464	7	17	\$993
HOPI	96	259	\$21,422	0	0	\$0
TOTAL	802	1,964	\$208,402	18	45	\$2,824

CHART 1

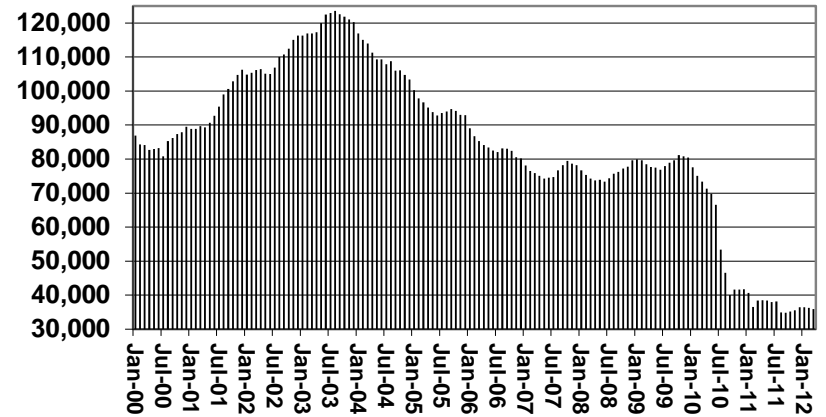
CASH ASSISTANCE PROGRAM

COMPARISON OF CASES, RECIPIENTS, PAYMENTS & AVERAGE PAYMENTS FOR 2000, 2001, 2002, 2003, 2004, 2005, 2006, 2007, 2008, 2009, 2010, 2011, & 2012

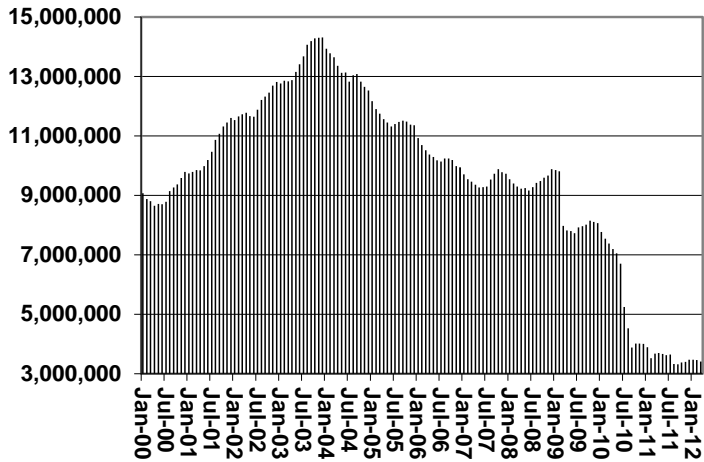
Cases



Recipients



Payments



Average Payment Per Recipient

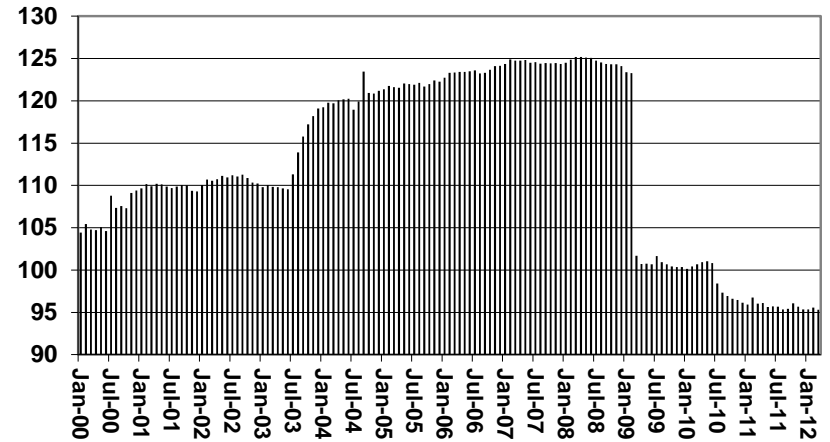


TABLE 1A
CA-UP

CASH ASSISTANCE UNEMPLOYED PARENT PROGRAM: ARIZONA 1/

	MARCH 2012							CHANGE FROM			FEBRUARY 2012			MARCH 2011		
	FAMILIES (CASES)	PERSONS (RECIP.)	ADULTS	CHILDREN	TOTAL PAYMENTS	AVERAGE PAYMENT/ CASE	AVERAGE PAYMENT/ RECIP.	FAMILIES (CASES)	PERSONS (RECIP.)	TOTAL PAYMENTS	FAMILIES (CASES)	PERSONS (RECIP.)	TOTAL PAYMENTS			
ARIZONA	498	1,896	879	1,017	143,413	287.98	75.64	17	(38)	1,528	(43)	(22)	(4,397)			
REGION																
MARICOPA	289	1,119	501	618	85,790	296.85	76.67	11	(39)	694	(69)	(156)	(13,272)			
NORTHERN	39	148	75	73	11,374	291.64	76.85	1	6	1,332	13	52	4,259			
APACHE	7	24	12	12	1,901	271.57	79.21	0	0	(31)	6	21	1,623			
COCONINO	2	9	4	5	603	301.50	67.00	0	(5)	66	1	3	367			
MOHAVE	20	76	39	37	6,197	309.85	81.54	3	14	1,237	2	10	1,141			
NAVAJO	10	39	20	19	2,673	267.30	68.54	(2)	(3)	60	4	18	1,128			
CENTRAL	68	248	121	127	17,195	252.87	69.33	7	8	1,137	28	106	6,944			
GILA	11	33	22	11	2,515	228.64	6.93	7	19	1,953	11	33	2,515			
LA PAZ	0	0	0	0	0	0.00	0.00	0	0	0	(1)	(4)	(156)			
PINAL	41	147	68	79	10,052	245.17	68.38	0	(11)	(816)	18	77	4,585			
YAVAPAI	8	37	16	21	2,538	317.25	68.59	5	21	1,305	(1)	4	80			
YUMA	8	31	15	16	2,090	261.25	67.42	(1)	(5)	(268)	1	5	148			
SOUTHERN	102	381	182	199	29,054	284.84	76.26	(6)	(29)	(2,672)	(15)	(33)	(2,556)			
COCHISE	2	7	4	3	613	306.50	87.57	(3)	(9)	(746)	(4)	(11)	(671)			
GRAHAM	6	19	12	7	1,411	0.00	0.00	0	(1)	(370)	5	14	1,019			
GREENLEE	1	3	2	1	209	209.00	69.67	0	0	0	1	3	209			
PIMA	92	351	164	187	26,657	289.75	75.95	(1)	(8)	(716)	(15)	(25)	(2,101)			
SANTA CRUZ	1	1	0	1	164	164.00	209.00	(2)	(11)	(840)	(2)	(14)	(1,012)			

1/EXCLUDES: PRIOR MONTH NET TOTALS OF: 34 CASES; 135 RECIPIENTS; \$10,384.
GRANT DIVERSION TOTALS OF: 0 CASES; \$0.
ZERO PAY TOTALS OF 9 CASES; 33 RECIPIENTS.

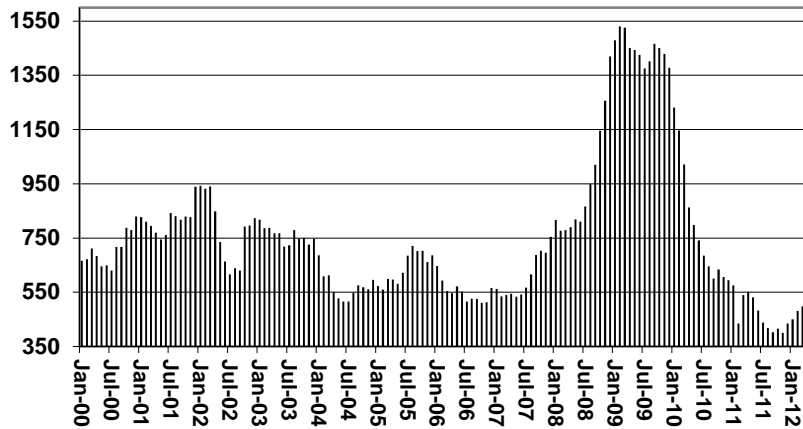
CASES WITH GRANT UNDER \$100 (SEE TABLE 1C).

	CURRENT MO. CASES	CURRENT MO. RECIP.	CURRENT MO. DOLLARS	PRIOR MO. CASES	PRIOR MO. RECIP.	PRIOR MO. DOLLARS
PASQUAYYAQUI	3	18	\$1,152	1	8	\$244
WM APACHE	0	0	\$0	0	0	\$0
SALT RIVER	0	0	\$0	0	0	\$0
SAN CARLOS	10	29	\$2,306	2	6	\$150
HOPI	0	0	\$0	0	0	\$0
TOTAL	13	47	\$3,458	3	14	\$394

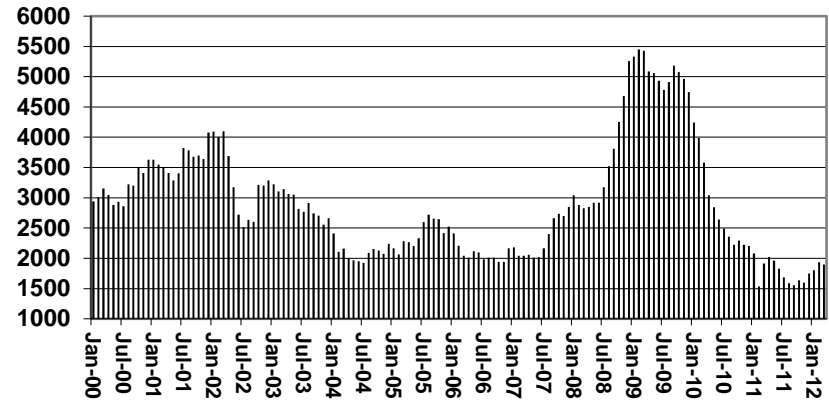
CHART 1A

CASH ASSISTANCE UNEMPLOYED PARENT PROGRAM COMPARISON OF CASES, RECIPIENTS, PAYMENTS & AVERAGE PAYMENTS FOR 2000, 2001, 2002, 2003, 2004, 2005, 2006, 2007, 2008, 2009, 2010, 2011, & 2012

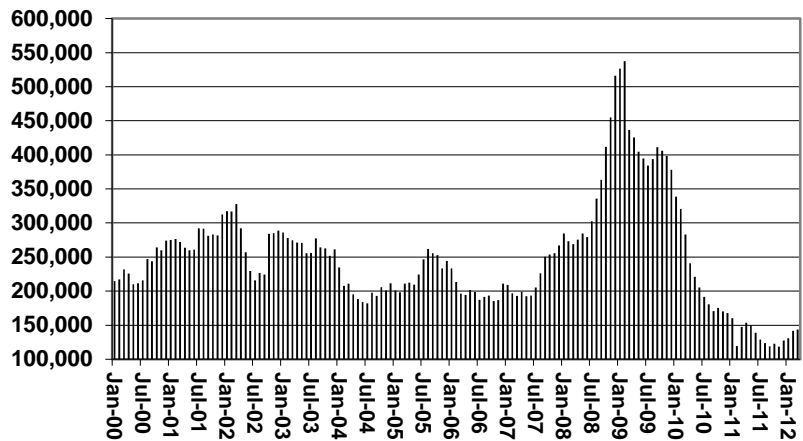
Cases



Recipients



Payments



Average Payment Per Recipient

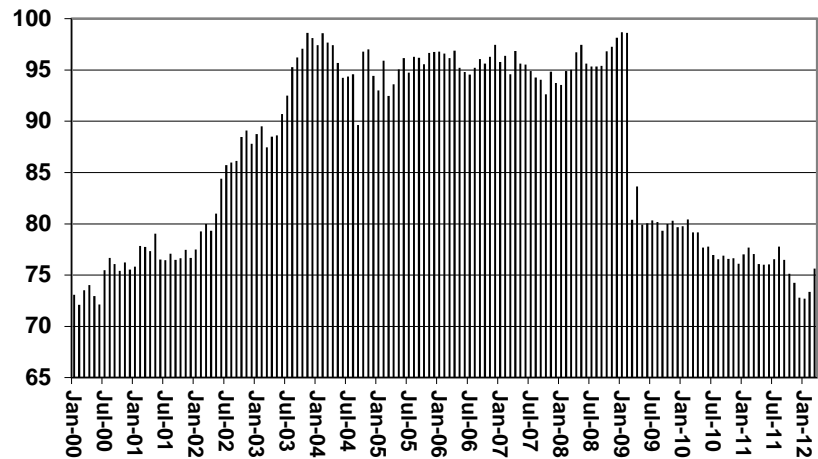


TABLE 1B 1/

CASH ASSISTANCE: ARIZONA
CASES WITH GRANT UNDER \$100

	MARCH 2012							CHANGE FROM			FEBRUARY 2012			MARCH 2011		
	FAMILIES (CASES)	PERSONS (RECIP.)	ADULTS	CHILDREN	TOTAL PAYMENTS	AVERAGE PAYMENT/ CASE	AVERAGE PAYMENT/ RECIP.	FAMILIES (CASES)	PERSONS (RECIP.)	TOTAL PAYMENTS	FAMILIES (CASES)	PERSONS (RECIP.)	TOTAL PAYMENTS			
	ARIZONA	707	1,454	410	1,044	51,268	72.51	35.26	134	235	8,725	181	379	13,149		
REGION																
MARICOPA	450	952	252	700	32,142	71.43	33.76	85	156	5,125	133	285	9,434			
NORTHERN	36	70	25	45	2,742	76.17	39.17	4	8	314	10	19	955			
APACHE	2	4	2	2	195	97.50	48.75	2	4	195	0	(2)	52			
COCONINO	5	10	3	7	319	63.80	31.90	(2)	(1)	(238)	2	0	122			
MOHAVE	21	41	12	29	1,641	78.14	40.02	4	4	436	6	17	588			
NAVAJO	8	15	8	7	587	73.38	39.13	0	1	(79)	2	4	193			
CENTRAL	83	163	50	113	6,205	74.76	38.07	28	40	2,145	30	65	1,947			
GILA	3	4	1	3	92	30.67	23.00	1	1	(93)	1	0	(142)			
LA PAZ	4	8	2	6	299	74.75	37.38	0	(2)	32	(3)	(5)	(96)			
PINAL	38	78	23	55	2,950	77.63	37.82	14	26	1,048	17	41	1,134			
YAVAPAI	16	30	8	22	1,263	78.94	42.10	7	9	692	4	10	242			
YUMA	22	43	16	27	1,601	72.77	37.23	6	6	466	11	19	809			
SOUTHERN	138	269	83	186	10,179	73.76	37.84	17	31	1,141	8	10	813			
COCHISE	14	28	7	21	1,147	81.93	40.96	4	5	225	4	12	190			
GRAHAM	3	5	2	3	314	104.67	62.80	1	2	154	1	2	188			
GREENLEE	0	0	0	0	0	0.00	0.00	(1)	(2)	(157)	0	0	0			
PIMA	112	222	70	152	8,065	72.01	36.33	9	19	784	(3)	(9)	32			
SANTA CRUZ	9	14	4	10	653	72.56	46.64	4	7	135	6	5	403			

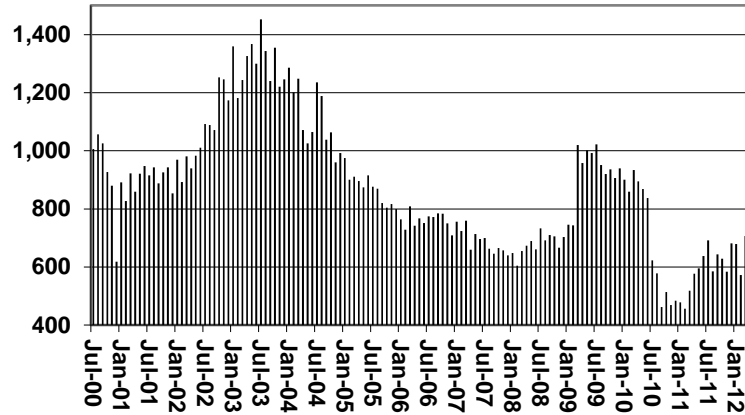
EXCLUDES: PRIOR MONTH NET TOTALS OF 415 CASES; 932 RECIPIENTS; \$25,865.

CHART 1B

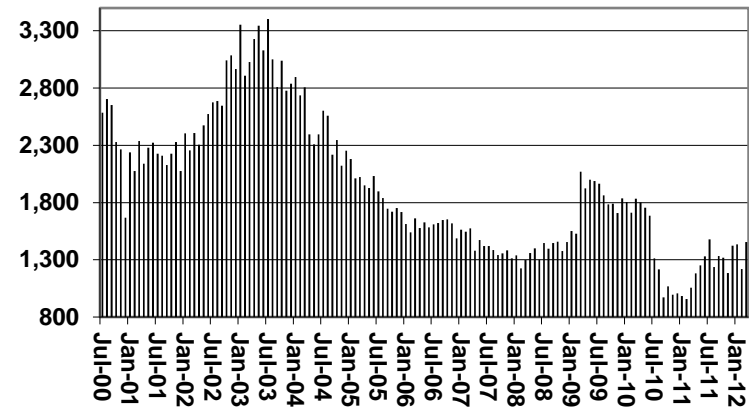
CASH ASSISTANCE PROGRAM CASES WITH GRANT UNDER \$100

FOR 2000, 2001, 2002, 2003, 2004, 2005, 2006, 2007, 2008, 2009, 2010, 2011, & 2012

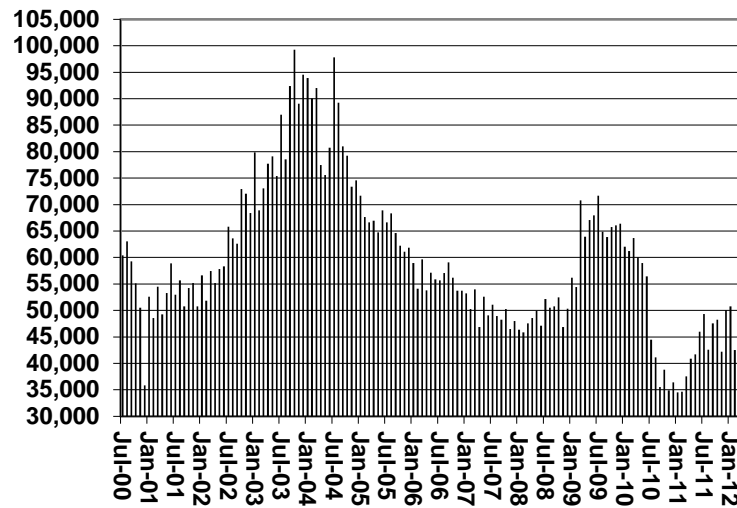
Cases



Recipients



Payments



Average Payment Per Recipient

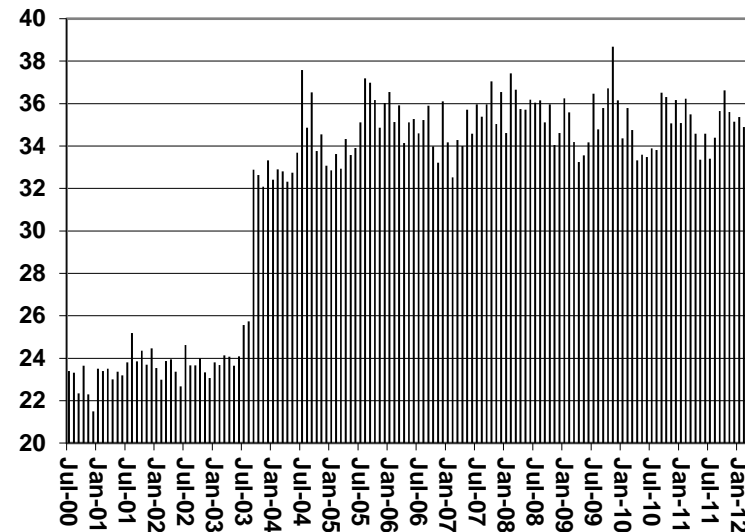


TABLE 1C 1/

CASH ASSISTANCE UNEMPLOYED PARENT PROGRAM: ARIZONA
 CASES WITH GRANT UNDER \$100

	MARCH 2012							CHANGE FROM			MARCH 2011		
								FEBRUARY 2012					
	FAMILIES (CASES)	PERSONS (RECIP.)	ADULTS	CHILDREN	TOTAL PAYMENTS	AVERAGE PAYMENT/ CASE	AVERAGE PAYMENT/ RECIP.	FAMILIES (CASES)	PERSONS (RECIP.)	TOTAL PAYMENTS	FAMILIES (CASES)	PERSONS (RECIP.)	TOTAL PAYMENTS
ARIZONA	9	30	12	18	571	63.44	19.03	(1)	(12)	(24)	(11)	(21)	(678)
REGION													
MARICOPA	5	16	6	10	330	66.00	20.63	(2)	(12)	(153)	(10)	(16)	(545)
NORTHERN	1	1	0	1	52	52.00	52.00	1	1	52	1	1	52
APACHE	0	0	0	0	0	0.00	0.00	0	0	0	0	0	0
COCONINO	1	1	0	1	52	52.00	52.00	1	1	52	1	1	52
MOHAVE	0	0	0	0	0	0.00	0.00	0	0	0	0	0	0
NAVAJO	0	0	0	0	0	0.00	0.00	0	0	0	0	0	0
CENTRAL	0	0	0	0	0	0.00	0.00	(1)	(4)	(31)	(2)	(8)	(145)
GILA	0	0	0	0	0	0.00	0.00	0	0	0	0	0	0
LA PAZ	0	0	0	0	0	0.00	0.00	0	0	0	0	0	0
PINAL	0	0	0	0	0	0.00	0.00	0	0	0	(1)	(5)	(89)
YAVAPAI	0	0	0	0	0	0.00	0.00	0	0	0	(1)	(3)	(56)
YUMA	0	0	0	0	0	0.00	0.00	(1)	(4)	(31)	0	0	0
SOUTHERN	3	13	6	7	189	63.00	14.54	1	3	108	0	2	(40)
COCHISE	2	6	4	2	91	45.50	15.17	1	3	20	2	6	91
GRAHAM	0	0	0	0	0	0.00	0.00	0	0	0	0	0	0
GREENLEE	1	7	2	5	98	98.00	14.00	0	0	88	1	7	98
PIMA	0	0	0	0	0	0.00	0.00	0	0	0	(3)	(11)	(229)
SANTA CRUZ	0	0	0	0	0	0.00	0.00	0	0	0	0	0	0

EXCLUDES: PRIOR MONTH NET TOTALS OF 40 CASES; 147 RECIPIENTS; \$2,021.

CHART 1C

CASH ASSISTANCE UNEMPLOYED PARENT PROGRAM

CASES WITH GRANT UNDER \$100

FOR 2000, 2001, 2002, 2003, 2004, 2005, 2006, 2007, 2008, 2009, 2010, 2011, & 2012

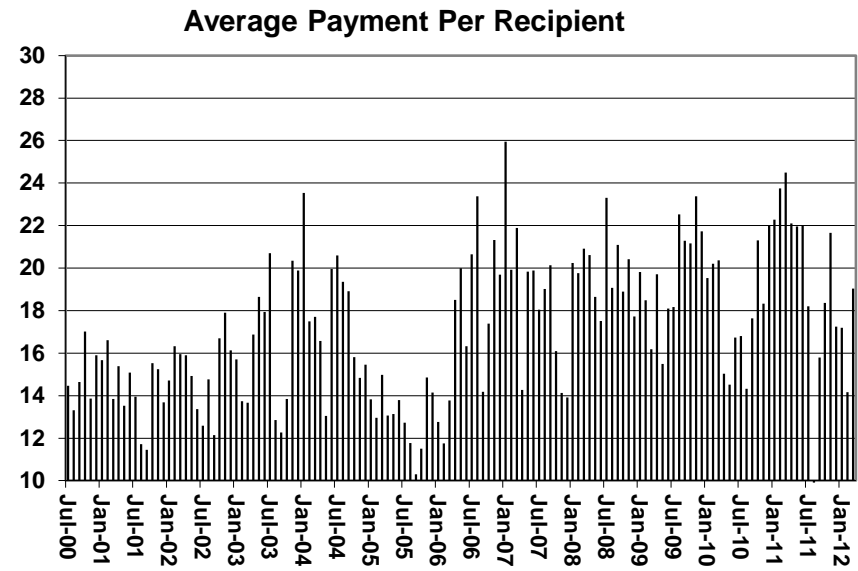
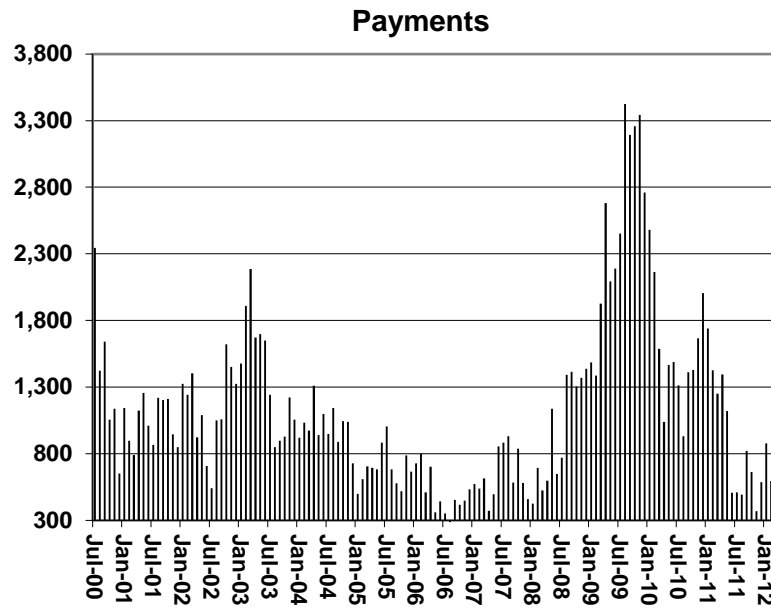
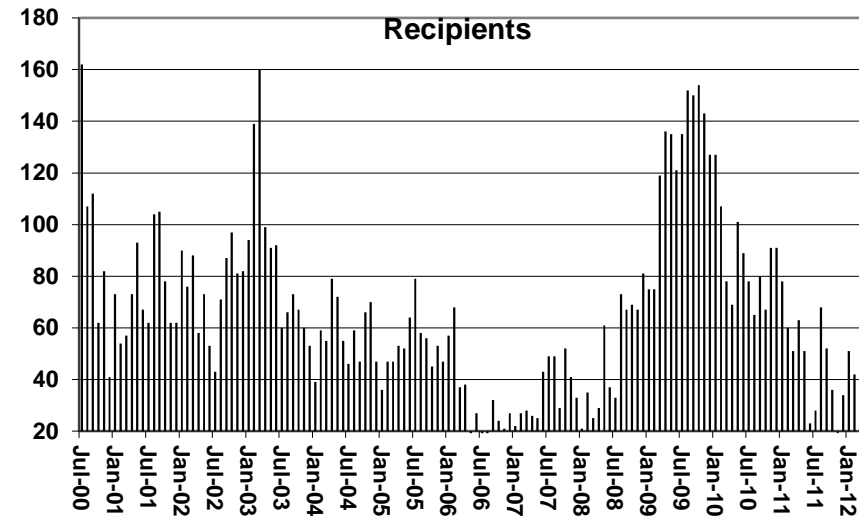
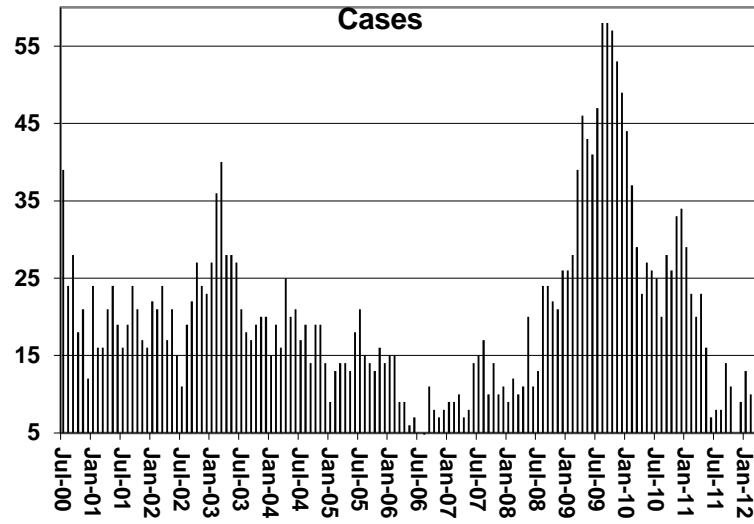


TABLE 4
TUBERCULOSIS CONTROL: ARIZONA 1/

	MARCH 2012					CHANGE FROM					
						FEBRUARY 2012			MARCH 2011		
	NUMBER OF CASES	PERSONS (RECIP.)	TOTAL PAYMENTS	AVERAGE PAYMENT/ CASE	AVERAGE PAYMENT/ RECIP.	NUMBER OF CASES	PERSONS (RECIP.)	TOTAL PAYMENTS	NUMBER OF CASES	PERSONS (RECIP.)	TOTAL PAYMENTS
ARIZONA	4	4	512	128.00	128.00	(1)	(1)	(108)	(1)	(1)	(5)
REGION											
MARICOPA	3	3	454	151.33	151.33	(1)	(1)	(108)	(2)	(2)	(63)
NORTHERN	1	1	58	58.00	58.00	0	0	0	1	1	58
APACHE	0	0	0	0.00	0.00	0	0	0	0	0	0
COCONINO	0	0	0	0.00	0.00	0	0	0	0	0	0
MOHAVE	1	1	58	58.00	58.00	0	0	0	1	1	58
NAVAJO	0	0	0	0.00	0.00	0	0	0	0	0	0
CENTRAL	0	0	0	0.00	0.00	0	0	0	0	0	0
GILA	0	0	0	0.00	0.00	0	0	0	0	0	0
LA PAZ	0	0	0	0.00	0.00	0	0	0	0	0	0
PINAL	0	0	0	0.00	0.00	0	0	0	0	0	0
YAVAPAI	0	0	0	0.00	0.00	0	0	0	0	0	0
YUMA	0	0	0	0.00	0.00	0	0	0	0	0	0
SOUTHERN	0	0	0	0.00	0.00	0	0	0	0	0	0
COCHISE	0	0	0	0.00	0.00	0	0	0	0	0	0
GRAHAM	0	0	0	0.00	0.00	0	0	0	0	0	0
GREENLEE	0	0	0	0.00	0.00	0	0	0	0	0	0
PIMA	0	0	0	0.00	0.00	0	0	0	0	0	0
SANTA CRUZ	0	0	0	0.00	0.00	0	0	0	0	0	0

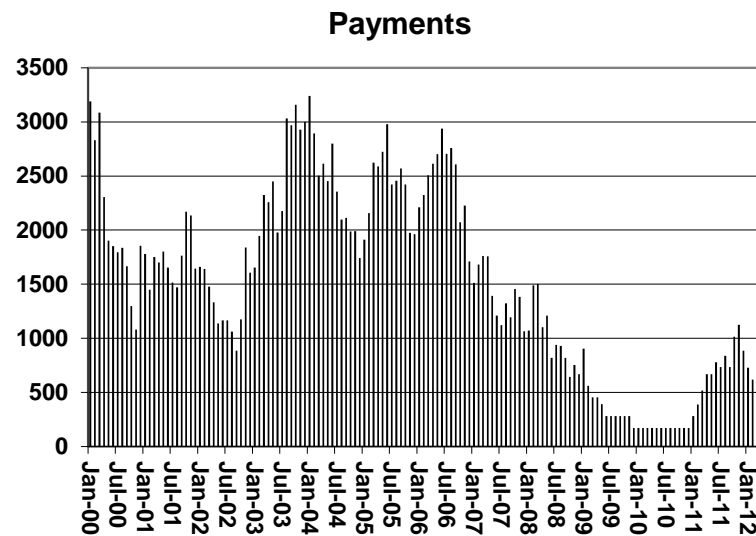
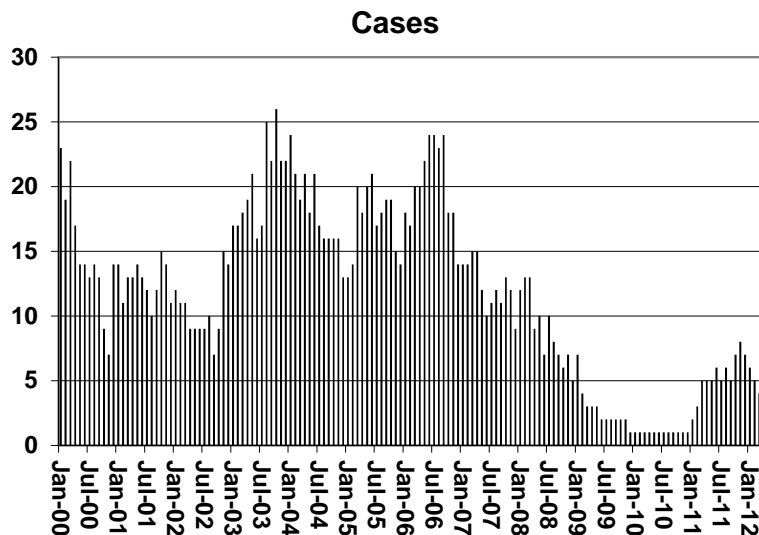
1/EXCLUDES: PRIOR MONTH NET TOTALS OF : 0 CASES; 0 RECIPIENTS; \$0.

CHART 4

TUBERCULOSIS CONTROL PROGRAM

COMPARISON OF CASES, PAYMENTS & AVERAGE PAYMENTS

FOR 2000, 2001, 2002, 2003, 2004, 2005, 2006, 2007, 2008, 2009, 2010, 2011, & 2012



Average Payment Per Case

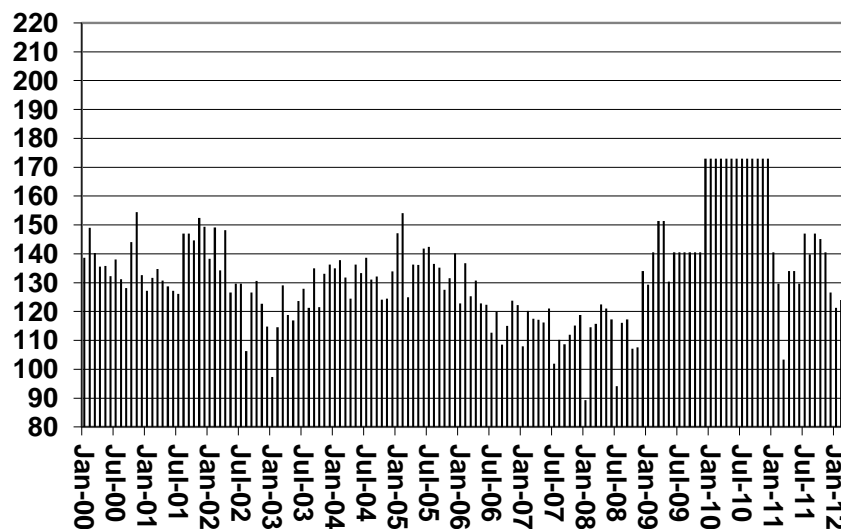


TABLE 6

SUPPLEMENTAL NUTRITION ASSISTANCE PROGRAM: ARIZONA 1/

CHANGE FROM

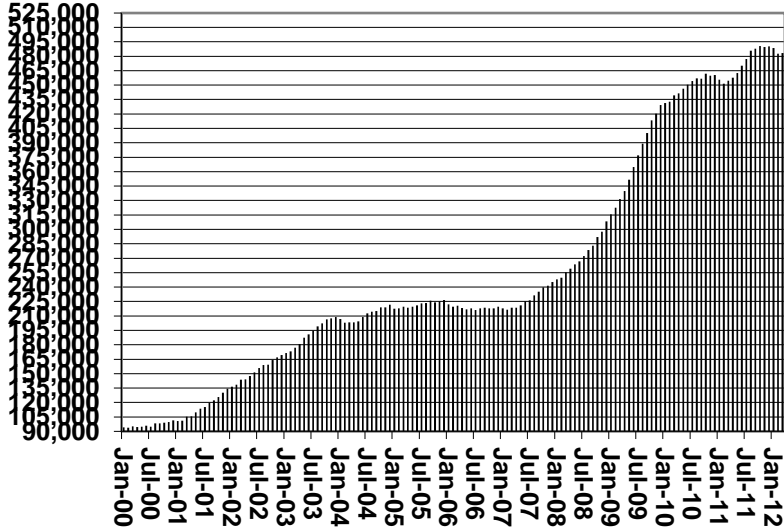
	MARCH 2012							FEBRUARY 2012			MARCH 2011		
	HOUSEHOLDS	PERSONS	ADULTS	CHILDREN	TOTAL PAYMENTS ISSUANCE	AVERAGE PAYMT./ HOUSEHOLD	AVERAGE PAYMT./ PERSON	HOUSEHOLDS	PERSONS	TOTAL PAYMENTS ISSUANCE	HOUSEHOLDS	PERSONS	TOTAL PAYMENTS ISSUANCE
ARIZONA	483,395	1,118,247	573,262	544,985	140,270,587	290.18	125.44	778	208	247,233	27,535	80,627	8,107,222
REGION													
MARICOPA	259,648	607,310	289,860	317,450	77,212,051	297.37	127.14	237	219	246,728	16,449	49,389	5,661,460
NORTHERN	56,876	136,151	77,257	58,894	16,911,866	297.35	124.21	287	(178)	10,176	4,062	9,130	956,575
APACHE	10,765	29,001	15,972	13,029	3,574,711	332.07	123.26	73	46	4,886	797	1,745	190,675
COCONINO	10,398	25,119	13,585	11,534	3,143,122	302.28	125.13	41	(133)	(10,630)	987	1,989	265,658
MOHAVE	21,503	45,622	27,514	18,108	5,677,673	264.04	124.45	29	(197)	(3,045)	1,139	2,741	205,163
NAVAJO	14,210	36,409	20,186	16,223	4,516,360	317.83	124.05	144	106	18,965	1,139	2,655	295,079
CENTRAL	63,849	151,018	81,938	69,080	18,120,027	283.80	119.99	42	(131)	(68,706)	4,053	12,504	930,284
GILA	6,266	13,768	8,000	5,768	1,767,469	282.07	128.38	36	48	1,473	120	560	32,032
LA PAZ	2,078	4,235	2,467	1,768	540,593	260.15	127.65	5	7	(2,026)	34	128	7,673
PINAL	23,385	58,459	30,133	28,326	7,242,444	309.70	123.89	(26)	(107)	(39,007)	1,534	5,254	461,110
YAVAPAI	16,034	32,346	19,444	12,902	3,960,749	247.02	122.45	67	120	1,320	1,143	2,449	227,343
YUMA	16,086	42,210	21,894	20,316	4,608,772	286.51	109.19	(40)	(199)	(30,466)	1,222	4,113	202,126
SOUTHERN	103,022	223,768	124,207	99,561	28,026,643	272.05	125.25	212	298	59,035	2,971	9,604	558,903
COCHISE	11,132	24,266	13,889	10,377	2,918,354	262.16	120.27	35	163	20,127	466	1,426	65,831
GRAHAM	3,523	8,093	4,481	3,612	992,543	281.73	122.64	13	44	1,899	43	129	(34,478)
GREENLEE	546	1,200	685	515	155,259	284.36	129.38	9	17	3,166	39	96	15,982
PIMA	83,163	177,799	98,766	79,033	22,532,258	270.94	126.73	182	192	55,214	2,166	7,243	472,808
SANTA CRUZ	4,658	12,410	6,386	6,024	1,428,229	306.62	115.09	(27)	(118)	(21,371)	257	710	38,760

1/EXCLUDES: PRIOR MONTH NET TOTALS OF : 7,974 CASES; 23,000 RECIPIENTS; \$1,379,781.
 AGED CANCELATIONS: 12,010 CASES; 14,991 RECIPIENTS; \$592,868.
 SNAP CONVERSIONS: 0 CASES; 0 RECIPIENTS; \$0.
 SNAP CHILD ONLY: 62,935 CASES; 149,163 RECIPIENTS; \$22,653,132.
 SNAP ZERO PAY: 3,561 CASES; 12,830 RECIPIENTS.

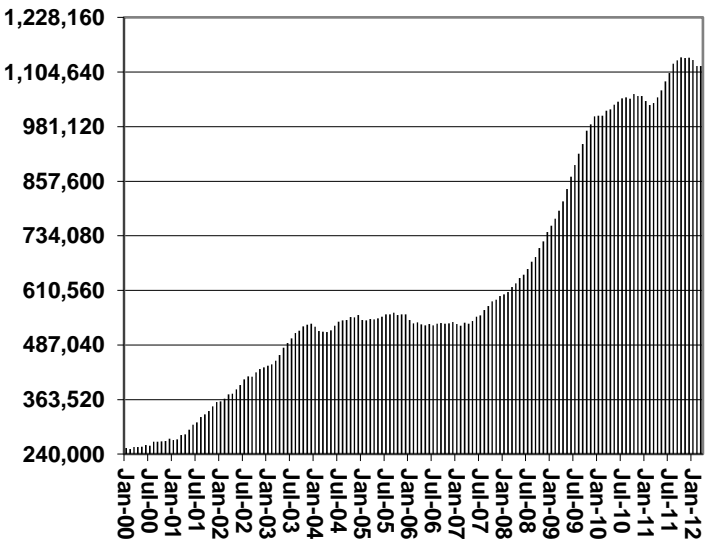
CHART 6

SUPPLEMENTAL NUTRITION ASSISTANCE PROGRAM (SNAP) COMPARISON OF HOUSEHOLDS, RECIPIENTS, PAYMENTS & AVERAGE PAYMENTS FOR 2000, 2001, 2002, 2003, 2004, 2005, 2006, 2007, 2008, 2009, 2010, 2011, & 2012

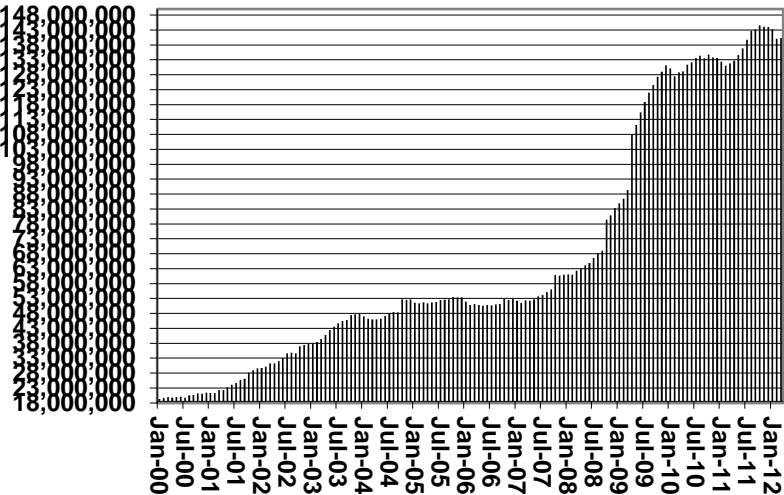
Households



Recipients



Payments



Average Payment Per Household

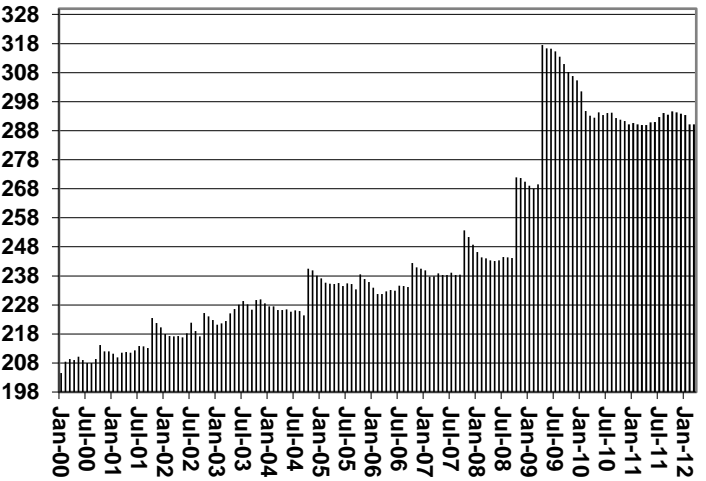


TABLE 7A
MEDICAL ASSISTANCE PROGRAM
RECIPIENTS
MARCH 2012

	SOBRA WOMAN 133% FPL	SOBRA CHILD	ADULT W/O CHILD 100% FPL	FOSTER CARE	1931 36% FPL	FEDERAL EMERGENCY SERVICES	INFANTS	ADULT W/O CHILD 40% FPL	MEDICAL W/SPEND DOWN	SOBRA WOMAN 100% FPL	SOBRA CHILD 100% FPL	TRANSITIONAL MEDICAL T1 - T4	1931 100% FPL	YATI	OTHER	TOTAL CASES
ARIZONA	11,651	52,514	34,355	14,253	370,422	62,447	45,879	103,867	0	4,212	240,904	50,977	122,456	346	28,777	1,143,060
REGION																
MARICOPA	6,642	30,345	16,893	7,981	208,484	50,594	27,718	51,819	0	2,325	144,235	26,221	64,195	183	15,030	652,665
NORTHERN	1,245	5,121	4,016	700	47,889	1,110	4,547	16,317	0	480	23,208	5,297	14,469	25	2,974	127,398
APACHE	194	1,016	567	41	12,312	73	871	4,023	0	71	4,028	1,021	2,494	0	387	27,098
COCONINO	272	977	741	128	8,944	456	1,056	2,684	0	114	4,816	1,087	2,910	15	434	24,634
MOHAVE	445	1,624	1,757	357	12,640	362	1,399	4,960	0	163	8,677	1,887	5,288	8	1,613	41,180
NAVAJO	334	1,504	951	174	13,993	219	1,221	4,650	0	132	5,687	1,302	3,777	2	540	34,486
CENTRAL	1,757	7,252	5,035	1,614	46,900	3,782	5,845	13,529	0	659	29,977	9,293	18,050	43	4,390	148,126
GILA	119	457	425	106	4,844	104	464	1,706	0	49	1,997	496	1,340	3	344	12,454
LA PAZ	45	176	158	29	1,392	111	134	488	0	11	698	117	364	1	162	3,886
PINAL	595	3,133	1,431	616	20,807	1,280	2,216	5,275	0	243	11,336	2,450	6,366	15	1,352	57,115
YAVAPAI	439	1,510	1,531	554	8,441	1,181	1,112	3,028	0	125	6,425	1,635	3,950	22	1,194	31,147
YUMA	559	1,976	1,490	309	11,416	1,106	1,919	3,032	0	231	9,521	4,595	6,030	2	1,338	43,524
SOUTHERN	2,007	9,796	8,411	3,958	67,149	6,961	7,769	22,202	0	748	43,484	10,166	25,742	95	6,383	214,871
COCHISE	205	921	1,035	260	7,256	423	772	2,065	0	67	4,411	994	2,791	4	876	22,080
GRAHAM	92	330	274	85	2,784	22	354	886	0	31	1,392	424	890	1	165	7,730
GREENLEE	13	40	40	10	500	4	57	151	0	5	195	32	100	1	28	1,176
PIMA	1,594	8,009	6,504	3,568	53,124	6,102	6,188	18,160	0	595	34,399	7,925	20,050	89	4,857	171,164
SANTA CRUZ	103	496	558	35	3,485	410	398	940	0	50	3,087	791	1,911	0	457	12,721

TABLE 7B
MEDICAL ASSISTANCE PROGRAM
RECIPIENTS

CHANGE FROM

FEBRUARY 2012

	SOBRA WOMAN 133% FPL	SOBRA CHILD	ADULT W/O CHILD 100% FPL	FOSTER CARE	1931 36% FPL	FEDERAL EMERGENCY SERVICES	INFANTS	ADULT W/O CHILD 40% FPL	MEDICAL W/SPEND DOWN	SOBRA WOMAN 100% FPL	SOBRA CHILD 100% FPL	TRANSITIONAL MEDICAL T1 - T4	1931 100% FPL	YATI	OTHER	TOTAL CASES
ARIZONA	206	(871)	(2,217)	203	(721)	1,120	323	(4,956)	0	(1)	(554)	(845)	(234)	(13)	(256)	(8,816)
REGION																
MARICOPA	120	(388)	(1,124)	121	210	1,130	248	(2,568)	0	(1)	(458)	(91)	(170)	(1)	(165)	(3,137)
NORTHERN	18	(185)	(246)	16	(291)	(23)	37	(747)	0	(12)	(88)	(101)	(44)	0	(12)	(1,678)
APACHE	15	(45)	(36)	0	(60)	0	11	(125)	0	(13)	(14)	(35)	(15)	0	0	(317)
COCONINO	1	(20)	(61)	(2)	(159)	(13)	(7)	(154)	0	1	0	(40)	(28)	1	(1)	(482)
MOHAVE	7	(56)	(102)	2	48	(6)	7	(252)	0	(13)	(55)	12	(5)	(1)	(11)	(425)
NAVAJO	(5)	(64)	(47)	16	(120)	(4)	26	(216)	0	13	(19)	(38)	4	0	0	(454)
CENTRAL	22	(89)	(379)	11	(378)	1	(7)	(656)	0	14	(40)	(343)	27	(3)	(38)	(1,858)
GILA	4	6	(21)	(1)	(59)	(2)	(11)	(65)	0	1	6	(9)	20	0	(3)	(134)
LA PAZ	2	3	(11)	0	30	(3)	7	(23)	0	(2)	5	(30)	16	0	(11)	(17)
PINAL	9	(35)	(132)	2	(278)	13	0	(282)	0	4	16	(58)	(20)	(4)	(5)	(770)
YAVAPAI	0	(15)	(87)	8	30	6	4	(171)	0	2	(8)	(140)	28	1	(20)	(362)
YUMA	7	(48)	(128)	2	(101)	(13)	(7)	(115)	0	9	(59)	(106)	(17)	0	1	(575)
SOUTHERN	46	(209)	(468)	55	(262)	12	45	(985)	0	(2)	32	(310)	(47)	(9)	(41)	(2,143)
COCHISE	2	(26)	(58)	6	(25)	8	18	(67)	0	(5)	9	(66)	8	(2)	3	(195)
GRAHAM	(2)	(19)	(17)	(1)	1	0	(13)	(53)	0	(3)	(48)	(7)	(6)	0	(8)	(176)
GREENLEE	(3)	(2)	(1)	0	9	(2)	0	(10)	0	1	(5)	(8)	(2)	0	(1)	(24)
PIMA	46	(132)	(377)	50	(160)	27	57	(841)	0	3	46	(244)	(13)	(7)	(28)	(1,573)
SANTA CRUZ	3	(30)	(15)	0	(87)	(21)	(17)	(14)	0	2	30	15	(34)	0	(7)	(175)

TABLE 7C
MEDICAL ASSISTANCE PROGRAM
RECIPIENTS

CHANGE FROM

MARCH 2011

	SOBRA WOMAN 133% FPL	SOBRA CHILD	ADULT W/O CHILD 100% FPL	FOSTER CARE	1931 36% FPL	FEDERAL EMERGENCY SERVICES	INFANTS	ADULT W/O CHILD 40% FPL	MEDICAL W/SPEND DOWN	SOBRA WOMAN 100% FPL	SOBRA CHILD 100% FPL	TRANSITIONAL MEDICAL T1 - T4	3E 1931 100% FPL	YATI	OTHER	TOTAL CASES
ARIZONA	928	(16,982)	(29,766)	1,677	36,225	12,671	(73)	(69,143)	(7,217)	376	9,999	5,084	(2,644)	2	(254)	(59,117)
REGION																
MARICOPA	950	(9,474)	(14,619)	1,210	22,662	11,963	300	(36,003)	(3,953)	317	8,431	4,221	(1,115)	(2)	50	(15,062)
NORTHERN	(29)	(2,381)	(3,797)	47	4,050	9	(82)	(9,382)	(952)	(62)	(96)	326	(450)	10	(104)	(12,893)
APACHE	(12)	(496)	(561)	7	806	(3)	(29)	(1,874)	(170)	(36)	(80)	163	(138)	0	(37)	(2,460)
COCONINO	(43)	(484)	(968)	1	617	40	(9)	(1,944)	(124)	11	(29)	(1)	(136)	3	4	(3,062)
MOHAVE	44	(599)	(1,368)	12	917	(39)	(10)	(3,214)	(461)	(19)	257	30	(32)	6	(14)	(4,490)
NAVAJO	(18)	(802)	(900)	27	1,710	11	(34)	(2,350)	(197)	(18)	(244)	134	(144)	1	(57)	(2,881)
CENTRAL	58	(2,034)	(4,663)	121	4,779	116	(131)	(8,680)	(1,052)	101	980	555	(313)	4	(64)	(10,223)
GILA	4	(233)	(396)	8	308	(21)	(35)	(967)	(117)	19	8	61	(27)	2	(34)	(1,420)
LA PAZ	12	(96)	(110)	12	150	(18)	(15)	(372)	(19)	(1)	(21)	(33)	(56)	1	1	(565)
PINAL	11	(1,031)	(1,523)	26	2,565	77	(56)	(3,379)	(325)	61	634	98	79	(2)	4	(2,761)
YAVAPAI	19	(202)	(1,265)	64	1,123	18	(38)	(2,195)	(307)	(2)	99	34	(226)	4	(48)	(2,922)
YUMA	12	(472)	(1,369)	11	633	60	13	(1,767)	(284)	24	260	395	(83)	(1)	13	(2,555)
SOUTHERN	(51)	(3,093)	(6,687)	299	4,734	583	(160)	(15,078)	(1,260)	20	684	(18)	(766)	(10)	(136)	(20,939)
COCHISE	(32)	(374)	(823)	17	415	(7)	(18)	(1,298)	(167)	(15)	(38)	27	(83)	0	(23)	(2,419)
GRAHAM	(21)	(130)	(220)	17	(11)	5	25	(628)	(63)	5	(24)	47	(12)	(1)	(3)	(1,014)
GREENLEE	2	(16)	(24)	2	69	2	7	(83)	(7)	(3)	(40)	(21)	(12)	(1)	(4)	(129)
PIMA	6	(2,408)	(5,250)	262	4,210	598	(115)	(12,808)	(952)	23	771	(182)	(627)	(7)	(104)	(16,583)
SANTA CRUZ	(6)	(165)	(370)	1	51	(15)	(59)	(261)	(71)	10	15	111	(32)	(1)	(2)	(794)

CHART 7

MEDICAL ASSISTANCE PROGRAM COMPARISON OF RECIPIENTS

FOR 2000, 2001, 2002, 2003, 2004, 2005, 2006, 2007, 2008, 2009, 2010, 2011, & 2012

Total Recipients

