



---

DEPARTMENT OF ECONOMIC SECURITY

---

*Your Partner For A Stronger Arizona*

State of Arizona

Department of Economic Security

Family Assistance Administration

Statistical Bulletin

May, 2012

Phone: (602) 542-3678

<http://www.azdes.gov/appreports.aspx>

\*\*\*\* STATISTICAL BULLETIN \*\*\*\*  
ARIZONA DEPARTMENT OF ECONOMIC SECURITY  
FAMILY ASSISTANCE ADMINISTRATION  
BOX 6123, PHOENIX, ARIZONA 85005  
PHONE (602) 542-3678

MAY 2012

THIS ISSUE OF THE STATISTICAL BULLETIN COMPARES MAY 2012 DATA FOR EACH OF THE INDICATED PROGRAMS WITH THE INFORMATION FOR APRIL 2012 AND MAY 2011. STATEWIDE SUMMARIES OF ACTIVITY WITHIN EACH OF THE SPECIFIC PROGRAMS FOR THIS REPORT PERIOD ARE DISCUSSED BELOW. THE TABLES COMPARE CURRENT AND PRIOR MONTH DATA. DISTRICT AND COUNTY COMPARISONS ARE PROVIDED WITHIN THIS BULLETIN

TANF SUMMARY

COMPARING TO APRIL 2012, MAY 2012 CASES DECREASED BY 57 (0.33%) TO 17,337. RECIPIENTS INCREASED BY 106 (0.27%) TO 39,573. PAYMENTS DECREASED BY \$1,515 (0.04%) TO \$3,626,530. AVERAGE PAYMENT PER CASE INCREASED BY \$0.60 (0.29%) TO \$0.00. PAYEMENT PER RECIPIENT DECREASED BY \$0.29 (0.32%) TO \$91.64.

COMPARING TO MAY 2011, MAY 2012 CASES DECREASED BY 1,036 (5.64%). RECIPIENTS DECREASED BY 2,114 (5.07%). TOTAL PAYMENTS DECREASED BY \$240,299 (6.21%). THE AVERAGE PAYMENT PER CASE DECREASED BY \$1.28 (0.61%). THE AVERAGE PAYMENT PER RECIPIENT DECREASED BY \$1.12 (1.21%).

CASH ASSISTANCE (CA)

COMPARING TO APRIL 2012, MAY 2012 CASES DECREASED BY 90 (0.56%) TO 16,066. RECIPIENTS DECREASED BY 30 (0.08%) TO 35,929. PAYMENTS DECREASED BY \$10,605 (0.31%) TO \$3,405,578. AVERAGE PAYMENT PER CASE INCREASED BY \$0.52 (0.25%) TO \$211.97. PAYEMENT PER RECIPIENT DECREASED BY \$0.21 (0.22%) TO \$94.79.

COMPARING TO MAY 2011, MAY 2012 CASES DECREASED BY 1,164 (6.76%). RECIPIENTS DECREASED BY 2,494 (6.49%). TOTAL PAYMENTS DECREASED BY \$268,247 (7.30%). THE AVERAGE PAYMENT PER CASE DECREASED BY \$1.25 (0.59%). THE AVERAGE PAYMENT PER RECIPIENT DECREASED BY \$0.83 (0.87%).

CASH ASSISTANCE UNEMPLOYED PARENT PROGRAM (CA-UP)

COMPARING TO APRIL 2012, MAY 2012 CASES INCREASED BY 41 (7.72%) TO 572. RECIPIENTS INCREASED BY 131 (6.47%) TO 2,155. PAYMENTS INCREASED BY \$11,111 (7.20%) TO \$165,355. AVERAGE PAYMENT PER CASE DECREASED BY \$1.40 (0.48%) TO \$289.08. PAYMENT PER RECIPIENT INCREASED BY \$0.52 (0.69%) TO \$76.73.

COMPARING TO MAY 2011, MAY 2012 CASES INCREASED BY 41 (7.72%). RECIPIENTS INCREASED BY 193 (9.84%). TOTAL PAYMENTS INCREASED BY \$15,201 (10.12%). THE AVERAGE PAYMENT PER CASE INCREASED BY \$6.31 (2.23%). THE AVERAGE PAYMENT PER RECIPIENT INCREASED BY \$0.20 (0.26%).

CASH ASSISTANCE WITH GRANT UNDER \$100 (CA-MOE)

COMPARING TO APRIL 2012, MAY 2012 CASES DECREASED BY 9 (1.30%) TO 685. RECIPIENTS DECREASED BY 4 (0.28%) TO 1,438. PAYMENTS DECREASED BY \$2,177 (3.83%) TO \$54,717. AVERAGE PAYMENT PER CASE DECREASED BY \$2.10 (2.56%) TO \$79.88. AVERAGE PAYEMENT PER RECIPIENT DECREASED BY \$1.40 (3.55%) TO \$38.05.

COMPARING TO MAY 2011, MAY 2012 CASES INCREASED BY 89 (14.93%). RECIPIENTS INCREASED BY 187 (14.95%). TOTAL PAYMENTS INCREASED BY \$12,987 (31.12%). THE AVERAGE PAYMENT PER CASE INCREASED BY \$9.86 (14.08%). THE AVERAGE PAYMENT PER RECIPIENT INCREASED BY \$4.69 (14.06%).

CASH ASSISTANCE UNEMPLOYED PARENT PROGRAM WITH GRANT UNDER \$100 (CA-UP-MOE) NEW PROGRAM STARTING 7/01

COMPARING TO APRIL 2012, MAY 2012 CASES INCREASED BY 1 (7.69%) TO 14. RECIPIENTS INCREASED BY 9 (21.43%) TO 51. PAYMENTS INCREASED BY \$156 (21.55%) TO \$880. AVERAGE PAYMENT PER CASE INCREASED BY \$7.17 (12.87%) TO \$62.86. PAYMENT PER RECIPIENT INCREASED BY \$0.01 (0.06%) TO \$17.25.

COMPARING TO MAY 2011, MAY 2012 CASES DECREASED BY 2 (12.50%). RECIPIENTS INCREASED BY 0 (0.00%). TOTAL PAYMENTS DECREASED BY \$240 (21.43%). THE AVERAGE PAYMENT PER CASE DECREASED BY \$7.14 (10.20%). THE AVERAGE PAYMENT PER RECIPIENT DECREASED BY \$4.71 (21.45%).

TUBERCULOSIS CONTROL PROGRAM (TC)

COMPARING TO APRIL 2012, MAY 2012 CASES INCREASED BY 0 (0.00%) TO 3. RECIPIENTS INCREASED BY 0 (0.00%) TO 3. PAYMENTS INCREASED BY \$0 (0.00%) TO \$404. AVERAGE PAYMENT PER CASE INCREASED BY \$74.51 (55.33%) TO \$209.18. AVERAGE PAYMENT PER RECIPIENT INCREASED BY \$0.00 (0.00%) TO \$134.67.

COMPARING TO MAY 2011, MAY 2012 CASES DECREASED BY 2 (40.00%). RECIPIENTS DECREASED BY 2 (40.00%). TOTAL PAYMENTS DECREASED BY \$266 (39.70%). THE AVERAGE PAYMENT PER CASE INCREASED BY \$75.18 (56.10%). THE AVERAGE PAYMENT PER RECIPIENT INCREASED BY \$0.67 (0.50%).

SUPPLEMENTAL NUTRITION ASSISTANCE PROGRAM (SNAP)

COMPARING TO APRIL 2012, MAY 2012 SUPPLEMENTAL NUTRITION ASSISTANCE HOUSEHOLDS DECREASED BY 123 (0.03%) TO 480,043. PERSONS RECEIVING SUPPLEMENTAL NUTRITION ASSISTANCE DECREASED BY 1,231 (0.11%) TO 1,110,833. TOTAL COUPON ISSUANCE DECREASED BY \$147,777 (0.11%) TO \$139,430,524. THE AVERAGE HOUSEHOLD ALLOTMENT DECREASED BY \$0.24 (0.08%) TO \$290.45. THE AVERAGE ALLOTMENT PER PERSON INCREASED BY \$0.01 (0.01%) TO \$125.52.

COMPARING TO MAY 2011, MAY 2012 SUPPLEMENTAL NUTRITION ASSISTANCE HOUSEHOLDS INCREASED BY 17,350 (3.75%). PERSONS RECEIVING SUPPLEMENTAL NUTRITION ASSISTANCE INCREASED BY 47,399 (4.46%). TOTAL COUPON ISSUANCE INCREASED BY \$4,851,536 (3.60%). THE AVERAGE ALLOTMENT PER HOUSEHOLD DECREASED BY \$0.41 (0.14%). THE AVERAGE ALLOTMENT PER PERSON DECREASED BY \$1.03 (0.81%).

MEDICAL ASSISTANCE PROGRAM (MA) NEW TABLE INCLUDES PROP. 204 CATEGORIES

COMPARING TO APRIL 2012, MAY 2012 TOTAL RECIPIENTS TOTAL RECIPIENTS DECREASED BY 7,402 (0.65%). SOBRA WOMEN AT 140% FPL INCREASED BY 143 (1.20%). SOBRA CHILDREN DECREASED BY 1,044 (2.03%). ADULTS W/O CHILD AT 100% DECREASED BY 2,142 (6.65%). FOSTER CARE INCREASED BY 102 (0.00%). 1931 AT 36% FPL DECREASED BY 415 (0.00%). EMERGENCY SERVICES INCREASED BY 1,263 (2.00%). INFANTS DECREASED BY 119 (0.26%). ADULT W/O CHILD AT 140% DECREASED BY 5,264 (5.34%). MEDICAL W/SPEND DOWN INCREASED BY 0 (100.00%). SOBRA WOMAN AT 100% INCREASED BY 126 (2.85%). SOBRA CHILD AT 100% INCREASED BY 1,278 (0.53%). TRANSITIONAL MEDICAL DECREASED BY 1,617 (3.22%). 1931 AT 100% INCREASED BY 518 (0.42%). YATI INCREASED BY 0 (0.00%). ALL OTHER CATEGORIES DECREASED BY 231 (0.80%).

COMPARING TO MAY 2011, MAY 2012 TOTAL RECIPIENTS TOTAL RECIPIENTS DECREASED BY 84,082 (6.93%). SOBRA WOMEN AT 140% FPL INCREASED BY 1,174 (10.81%). SOBRA CHILDREN DECREASED BY 18,014 (26.36%). ADULTS W/O CHILD AT 100% DECREASED BY 34,111 (53.17%). FOSTER CARE INCREASED BY 1,716 (13.38%). 1931 AT 36% FPL INCREASED BY 29,967 (8.80%). EMERGENCY SERVICES INCREASED BY 13,946 (27.60%). INFANTS INCREASED BY 257 (0.57%). ADULT W/O CHILD AT 140% DECREASED BY 80,833 (46.43%). MEDICAL W/SPEND DOWN DECREASED BY 6,609 (100.00%). SOBRA WOMAN AT 100% INCREASED BY 406 (9.79%). SOBRA CHILD AT 100% INCREASED BY 7,510 (3.19%). TRANSITIONAL MEDICAL INCREASED BY 4,765 (10.87%). 1931 AT 100% DECREASED BY 3,439 (2.72%). YATI INCREASED BY 14 (4.19%). ALL OTHER CATEGORIES DECREASED BY 831 (2.83%).

## TANF SUMMARY

### TABLES 1, 1A, 1B, & 1C: ARIZONA 1/

	MAY 2012							APRIL 2012			MAY 2011		
	FAMILIES (CASES)	PERSONS (RECIP.)	ADULTS	CHILDREN	TOTAL PAYMENTS	AVERAGE	AVERAGE	FAMILIES (CASES)	PERSONS (RECIP.)	TOTAL PAYMENTS	FAMILIES (CASES)	PERSONS (RECIP.)	TOTAL PAYMENTS
						PAYMENT/ CASE	PAYMENT/ RECIP.						
ARIZONA	17,337	39,573	10,960	28,613	3,626,530	209.18	91.64	(57)	106	(1,515)	(1,036)	(2,114)	(240,299)
REGION													
MARICOPA	10,937	25,546	7,003	18,543	2,288,984	209.29	89.60	22	206	8,294	(343)	(683)	(90,576)
NORTHERN	1,008	2,238	655	1,583	206,380	204.74	92.22	(39)	(97)	(6,377)	(35)	(114)	(9,066)
APACHE	43	110	32	78	9,711	225.84	88.28	0	0	82	(2)	19	1,233
COCONINO	83	201	59	142	16,329	196.73	81.24	(3)	6	(104)	17	30	1,216
MOHAVE	611	1,308	381	927	124,799	204.25	95.41	(26)	(74)	(4,016)	(4)	(20)	(851)
NAVAJO	271	619	183	436	55,541	204.95	89.73	(10)	(29)	(2,339)	(46)	(143)	(10,664)
CENTRAL	2,013	4,432	1,267	3,165	419,130	208.21	94.57	20	73	5,767	21	162	307
GILA	381	786	282	504	89,126	233.93	113.39	7	(3)	(45)	(19)	(78)	(8,837)
LA PAZ	53	119	25	94	10,464	197.43	87.93	1	7	744	(18)	(30)	(3,532)
PINAL	875	1,953	535	1,418	175,564	200.64	89.89	(5)	(2)	(1,390)	33	179	8,116
YAVAPAI	300	629	157	472	59,162	197.21	94.06	3	10	350	25	91	6,539
YUMA	404	945	268	677	84,814	209.94	89.75	14	61	6,108	0	0	(1,979)
SOUTHERN	3,379	7,357	2,035	5,322	712,036	210.72	96.78	(60)	(76)	(9,199)	(679)	(1,479)	(140,964)
COCHISE	361	725	168	557	73,637	203.98	101.57	(12)	(27)	(1,834)	21	52	4,159
GRAHAM	212	465	154	311	50,645	238.89	108.91	10	40	3,801	(26)	(12)	(3,376)
GREENLEE	18	42	14	28	3,554	197.44	84.62	3	4	846	1	0	(291)
PIMA	2,677	5,881	1,643	4,238	560,941	209.54	95.38	(56)	(87)	(11,070)	(685)	(1,543)	(144,031)
SANTA CRUZ	111	244	56	188	23,259	209.54	95.32	(5)	(6)	(942)	10	24	2,575

1/EXCLUDES: PRIOR MONTH NET TOTALS OF 854 CASES; 2,368 RECIPIENTS; \$138,081.

GRANT DIVERSION TOTALS OF: 568 CASES; \$455,013.

ZERO PAY TOTALS OF 1,237 CASES; 3,795 RECIPIENTS.

RRP: 136 CASES; 204 RECIPIENTS; \$27,277.

1/INCLUDES: TANF CHILD ONLY: 8,826 CASES; 14,953 RECIPIENTS; \$1,737,026.

	CURRENT MO. CASES	CURRENT MO. RECIP.	CURRENT MO. DOLLARS	PRIOR MO. CASES	PRIOR MO. RECIP.	PRIOR MO. DOLLARS
PASQUAYAOUI	234	646	\$69,037	10	31	\$3,083
WM APACHE	0	0	\$0	0	0	\$0
SALT RIVER	67	205	\$19,765	5	17	\$1,065
SAN CARLOS	387	805	\$95,202	18	43	\$2,227
HOPI	84	218	\$18,662	4	14	\$343
<b>TOTAL</b>	<b>772</b>	<b>1,874</b>	<b>\$202,666</b>	<b>37</b>	<b>105</b>	<b>\$6,718</b>

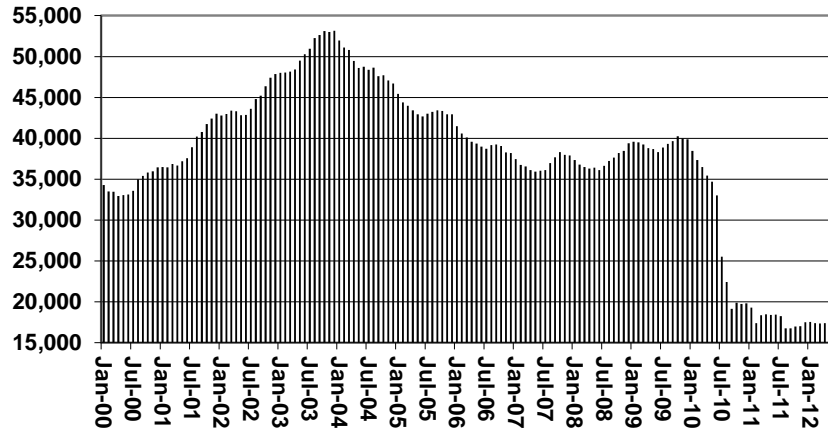
# TANF SUMMARY

TABLES 1, 1A, 1B, & 1C

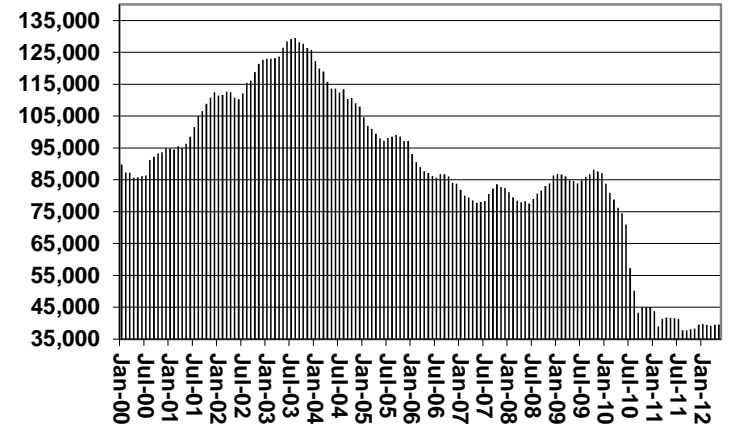
COMPARISON OF CASES, RECIPIENTS, PAYMENTS & AVERAGE PAYMENTS

FOR 2000, 2001, 2002, 2003, 2004, 2005, 2006, 2007, 2008, 2009, 2010, 2011, & 2012

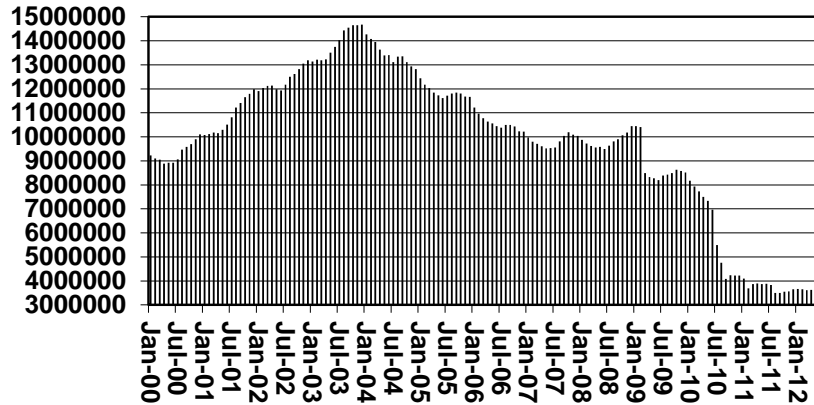
### Cases



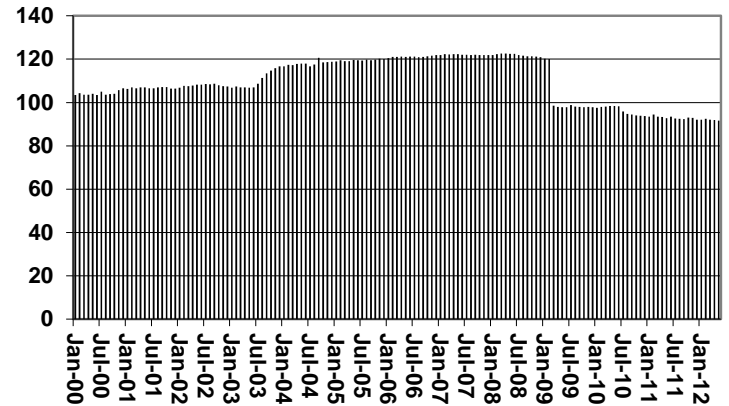
### Recipients



### Payments



### Average Payments Per Recipient



**TABLE 1**  
**CASH ASSISTANCE: ARIZONA 1/**

	MAY 2012							CHANGE FROM			MAY 2011		
	FAMILIES (CASES)	(RECIP.)	ADULTS	CHILDREN	TOTAL PAYMENTS	AVERAGE PAYMENT/ CASE	AVERAGE PAYMENT/ RECIP.	APRIL 2012			MAY 2011		
								FAMILIES (CASES)	PERSONS (RECIP.)	TOTAL PAYMENTS	FAMILIES (CASES)	PERSONS (RECIP.)	TOTAL PAYMENTS
ARIZONA	16,066	35,929	9,492	26,437	3,405,578	211.97	94.79	(90)	(30)	(10,605)	(1,164)	(2,494)	(268,247)
REGION													
MARICOPA	10,145	23,271	6,135	17,136	2,154,919	212.41	92.60	(23)	73	(263)	(439)	(938)	(104,957)
NORTHERN	928	2,005	557	1,448	191,800	206.68	95.66	(35)	(98)	(7,056)	(46)	(139)	(10,565)
APACHE	36	88	22	66	7,807	216.86	88.72	(1)	(2)	(158)	(6)	6	(31)
COCONINO	73	172	50	122	15,050	206.16	87.50	(4)	(7)	(787)	12	19	943
MOHAVE	565	1,174	320	854	116,486	206.17	99.22	(18)	(51)	(3,202)	(6)	(22)	(634)
NAVAJO	254	571	165	406	52,457	206.52	91.87	(12)	(38)	(2,909)	(46)	(142)	(10,843)
CENTRAL	1,844	3,955	1,056	2,899	389,352	211.15	98.45	(1)	(3)	(1,493)	(70)	(122)	(18,945)
GILA	348	689	224	465	80,670	231.81	117.08	1	(23)	(2,202)	(50)	(170)	(17,186)
LA PAZ	50	112	25	87	10,298	205.96	91.95	3	8	888	(12)	(13)	(2,327)
PINAL	791	1,722	437	1,285	161,443	204.10	93.75	(5)	12	(179)	(8)	61	568
YAVAPAI	280	573	138	435	56,155	200.55	98.00	9	27	1,590	24	83	6,217
YUMA	375	859	232	627	80,786	215.43	94.05	18	60	5,777	(8)	(22)	(2,314)
SOUTHERN	3,149	6,698	1,744	4,954	669,507	212.61	99.96	(58)	(89)	(9,160)	(625)	(1,356)	(137,683)
COCHISE	348	698	159	539	71,822	206.39	102.90	(6)	(16)	(1,167)	19	49	3,654
GRAHAM	198	416	127	289	46,107	232.86	110.83	7	23	2,068	(35)	(48)	(6,968)
GREENLEE	15	34	9	25	3,246	216.40	95.47	3	8	914	(2)	(8)	(599)
PIMA	2,485	5,319	1,396	3,923	526,119	211.72	98.91	(55)	(94)	(9,685)	(615)	(1,377)	(136,128)
SANTA CRUZ	103	231	53	178	22,213	215.66	96.16	(7)	(10)	(1,290)	8	28	2,358

1/EXCLUDES: PRIOR MONTH NET TOTALS OF: 335 CASES; 916 RECIPIENTS; \$91,726.  
GRANT DIVERSION TOTALS OF: 568 CASES; \$455,013.  
ZERO PAY TOTALS OF 1,231 CASES; 3,772 RECIPIENTS.

CASES WITH GRANT UNDER \$100 (SEE TABLE 1B).

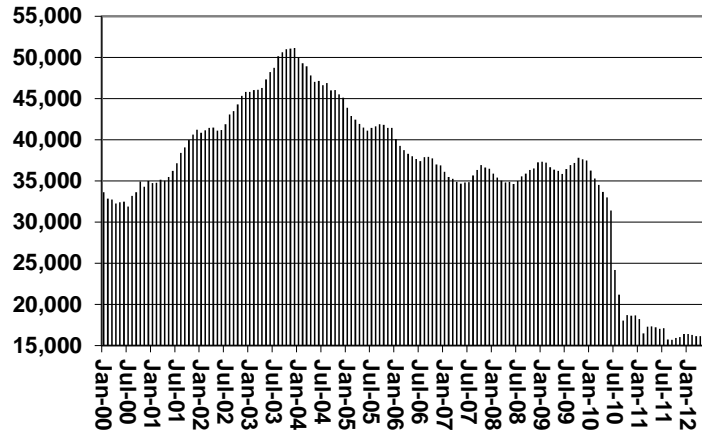
	CURRENT MO. CASES	CURRENT MO. RECIP.	CURRENT MO. DOLLARS	PRIOR MO. CASES	PRIOR MO. RECIP.	PRIOR MO. DOLLARS
PASQUAYYAQUI	230	624	\$67,380	9	26	\$2,653
WM APACHE	0	0	\$0	0	0	\$0
SALT RIVER	67	205	\$19,765	5	17	\$1,065
SAN CARLOS	360	722	\$87,133	14	30	\$1,331
HOPI	84	218	\$18,662	4	14	\$343
<b>TOTAL</b>	<b>741</b>	<b>1,769</b>	<b>\$192,940</b>	<b>32</b>	<b>87</b>	<b>\$5,392</b>

# CHART 1

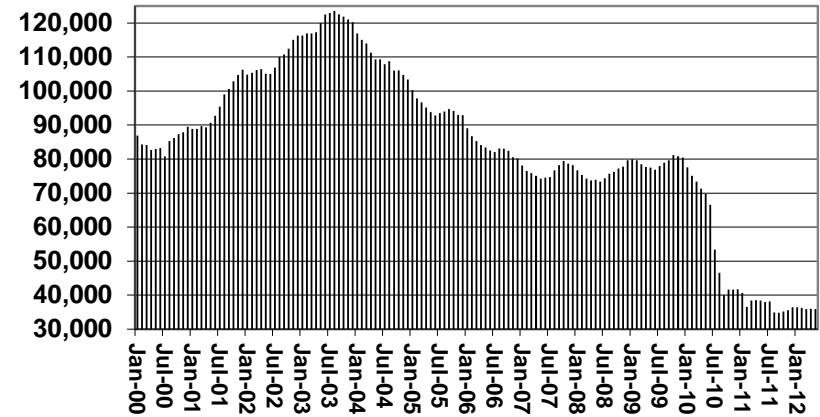
## CASH ASSISTANCE PROGRAM

### COMPARISON OF CASES, RECIPIENTS, PAYMENTS & AVERAGE PAYMENTS FOR 2000, 2001, 2002, 2003, 2004, 2005, 2006, 2007, 2008, 2009, 2010, 2011, & 2012

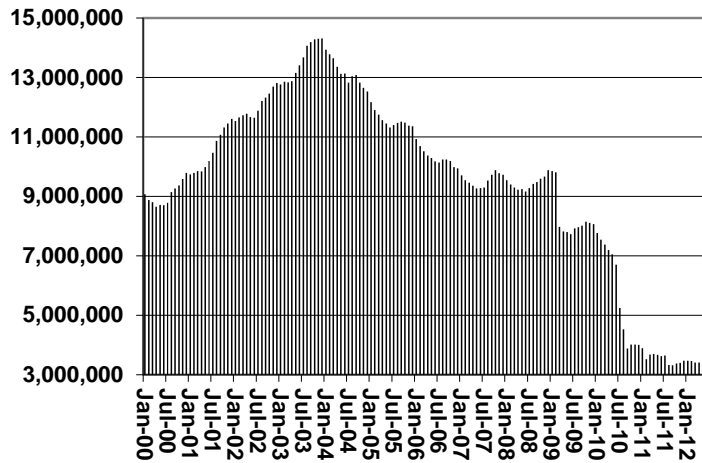
**Cases**



**Recipients**



**Payments**



**Average Payment Per Recipient**

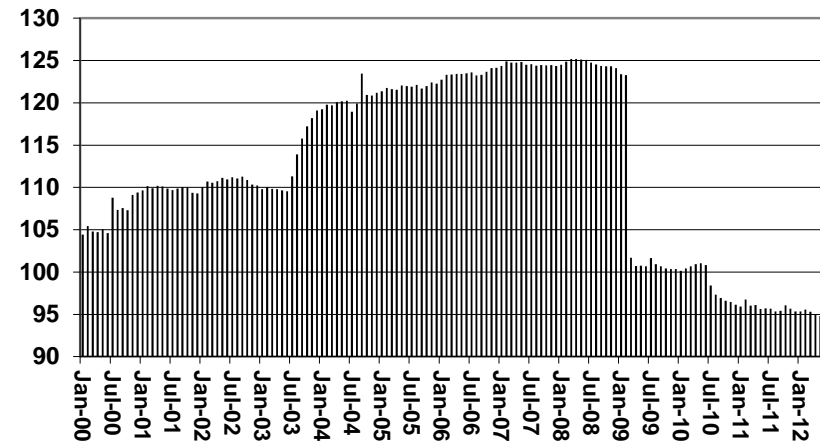


TABLE 1A  
CA-UP

CASH ASSISTANCE UNEMPLOYED PARENT PROGRAM: ARIZONA 1/

	MAY 2012							CHANGE FROM			MAY 2011		
	FAMILIES (CASES)	PERSONS (RECIP.)	ADULTS	CHILDREN	TOTAL PAYMENTS	AVERAGE PAYMENT/ CASE	AVERAGE PAYMENT/ RECIP.	FAMILIES (CASES)	PERSONS (RECIP.)	TOTAL PAYMENTS	FAMILIES (CASES)	PERSONS (RECIP.)	TOTAL PAYMENTS
ARIZONA	572	2,155	1,039	1,116	165,355	289.08	76.73	41	131	11,111	41	193	15,201
REGION													
MARICOPA	322	1,258	585	673	96,360	299.25	76.60	26	83	7,786	(2)	51	3,334
NORTHERN	38	147	68	79	11,326	298.05	77.05	4	20	1,071	0	0	352
APACHE	7	22	10	12	1,904	272.00	86.55	1	2	240	5	15	1,299
COCONINO	2	11	4	7	666	333.00	60.55	2	11	666	(1)	(3)	(309)
MOHAVE	21	77	39	38	6,496	309.33	84.36	(1)	(6)	(230)	(3)	(18)	(689)
NAVAJO	8	37	15	22	2,260	282.50	61.08	2	13	395	(1)	6	51
CENTRAL	91	318	162	156	24,155	265.44	75.96	5	4	983	50	167	13,392
GILA	30	92	56	36	8,128	270.93	2.94	7	21	2,075	30	92	8,128
LA PAZ	0	0	0	0	0	0.00	0.00	0	0	0	(3)	(13)	(959)
PINAL	44	154	73	81	11,042	250.95	71.70	(2)	(17)	(1,092)	23	88	6,223
YAVAPAI	6	29	12	17	2,026	337.67	69.86	(2)	(9)	(727)	(2)	2	44
YUMA	11	43	21	22	2,959	269.00	68.81	3	13	1,008	2	6	(9)
SOUTHERN	121	432	224	208	33,514	276.98	77.58	5	20	990	(3)	(22)	(29)
COCHISE	4	13	8	5	875	218.75	67.31	(1)	1	(223)	(2)	(7)	(555)
GRAHAM	14	49	27	22	4,502	0.00	0.00	6	25	2,050	12	42	3,890
GREENLEE	1	3	2	1	209	209.00	69.67	0	0	0	1	3	209
PIMA	100	362	185	177	27,429	274.29	75.77	(2)	(11)	(1,336)	(13)	(50)	(3,376)
SANTA CRUZ	2	5	2	3	499	249.50	41.80	2	5	499	(1)	(10)	(197)

1/EXCLUDES: PRIOR MONTH NET TOTALS OF: 50 CASES; 361 RECIPIENTS; \$15,422.  
GRANT DIVERSION TOTALS OF: 0 CASES; \$0.  
ZERO PAY TOTALS OF 6 CASES; 23 RECIPIENTS.

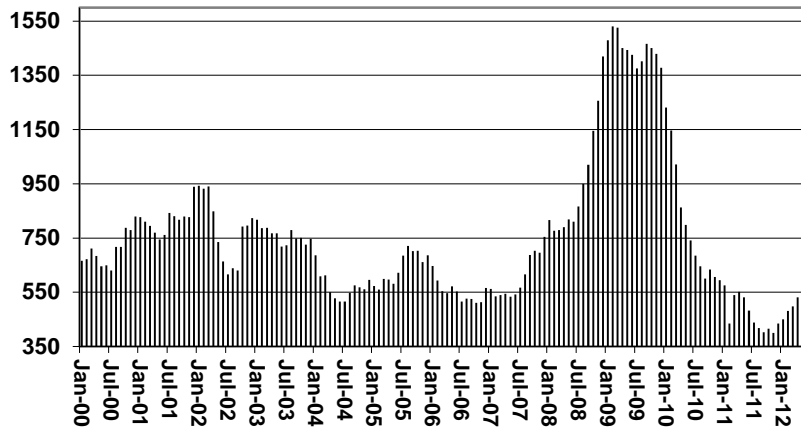
CASES WITH GRANT UNDER \$100 (SEE TABLE 1C).

	CURRENT MO. CASES	CURRENT MO. RECIP.	CURRENT MO. DOLLARS	PRIOR MO. CASES	PRIOR MO. RECIP.	PRIOR MO. DOLLARS
PASQUAYYAQUI	4	22	\$1,657	1	5	\$430
WM APACHE	0	0	\$0	0	0	\$0
SALT RIVER	0	0	\$0	0	0	\$0
SAN CARLOS	27	83	\$8,069	4	13	\$896
HOPI	0	0	\$0	0	0	\$0
TOTAL	31	105	\$9,726	5	18	\$1,326

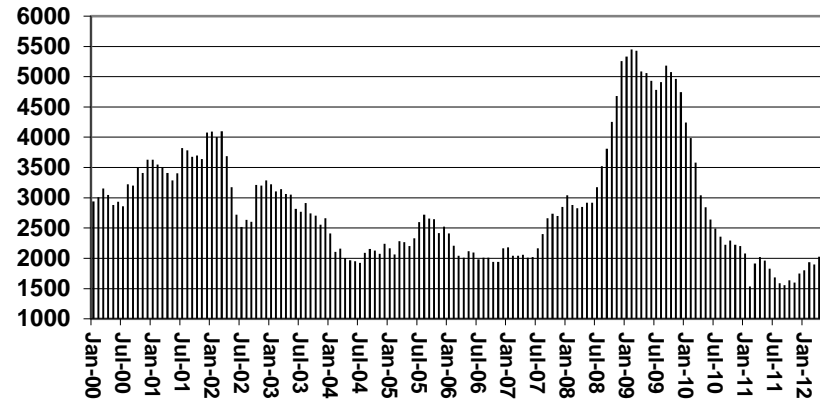
# CHART 1A

## CASH ASSISTANCE UNEMPLOYED PARENT PROGRAM COMPARISON OF CASES, RECIPIENTS, PAYMENTS & AVERAGE PAYMENTS FOR 2000, 2001, 2002, 2003, 2004, 2005, 2006, 2007, 2008, 2009, 2010, 2011, & 2012

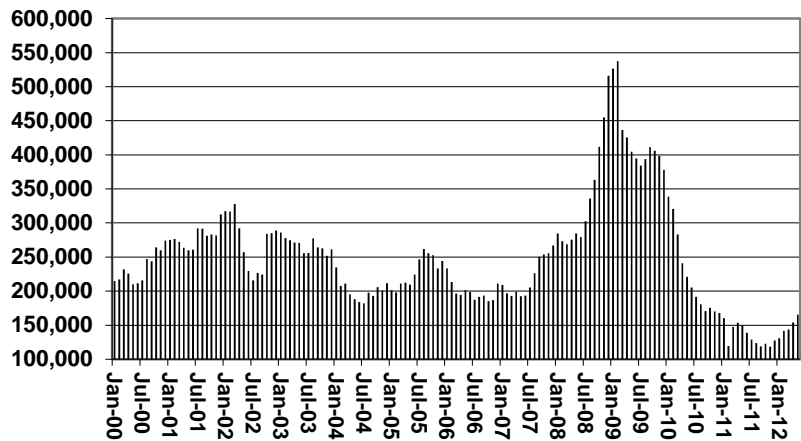
Cases



Recipients



Payments



Average Payment Per Recipient

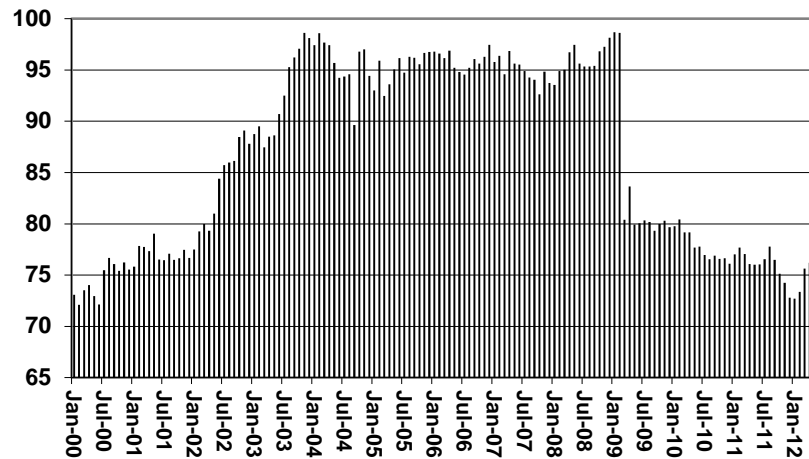




TABLE 1B 1/

CASH ASSISTANCE: ARIZONA  
CASES WITH GRANT UNDER \$100

	MAY 2012							CHANGE FROM			MAY 2011		
	FAMILIES (CASES)	PERSONS (RECIP.)	ADULTS	CHILDREN	TOTAL PAYMENTS	AVERAGE PAYMENT/ CASE	AVERAGE PAYMENT/ RECIP.	APRIL 2012			FAMILIES (CASES)	PERSONS (RECIP.)	TOTAL PAYMENTS
								FAMILIES (CASES)	PERSONS (RECIP.)	TOTAL PAYMENTS			
ARIZONA	685	1,438	405	1,033	54,717	79.88	38.05	(9)	(4)	(2,177)	89	187	12,987
REGION													
MARICOPA	462	989	271	718	37,245	80.62	37.66	16	39	557	102	211	11,341
NORTHERN	41	81	28	53	3,178	77.51	39.23	(8)	(23)	(416)	10	20	1,071
APACHE	0	0	0	0	0	0.00	0.00	0	0	0	(1)	(2)	(35)
COCONINO	8	18	5	13	613	76.63	34.06	0	3	69	6	14	582
MOHAVE	24	52	20	32	1,741	72.54	33.48	(8)	(22)	(660)	4	15	396
NAVAJO	9	11	3	8	824	91.56	74.91	0	(4)	175	1	(7)	128
CENTRAL	76	152	45	107	5,500	72.37	36.18	(12)	(19)	(1,391)	24	46	1,895
GILA	3	5	2	3	328	109.33	65.60	(1)	(1)	82	1	0	221
LA PAZ	3	7	0	7	166	55.33	23.71	(2)	(1)	(144)	(3)	(4)	(246)
PINAL	40	77	25	52	3,079	76.98	39.99	3	6	(79)	19	35	1,421
YAVAPAI	13	24	5	19	893	68.69	37.21	(5)	(11)	(601)	2	3	190
YUMA	17	39	13	26	1,034	60.82	26.51	(7)	(12)	(649)	5	12	309
SOUTHERN	106	216	61	155	8,794	82.96	40.71	(5)	(1)	(927)	(47)	(90)	(1,320)
COCHISE	9	14	1	13	940	104.44	67.14	(4)	(9)	(373)	2	2	514
GRAHAM	0	0	0	0	36	0.00	0.00	(3)	(8)	(317)	(3)	(6)	(298)
GREENLEE	2	5	3	2	99	49.50	19.80	1	3	30	2	5	99
PIMA	89	189	56	133	7,172	80.58	37.95	1	14	(116)	(51)	(90)	(1,964)
SANTA CRUZ	6	8	1	7	547	91.17	68.38	0	(1)	(151)	3	(1)	329

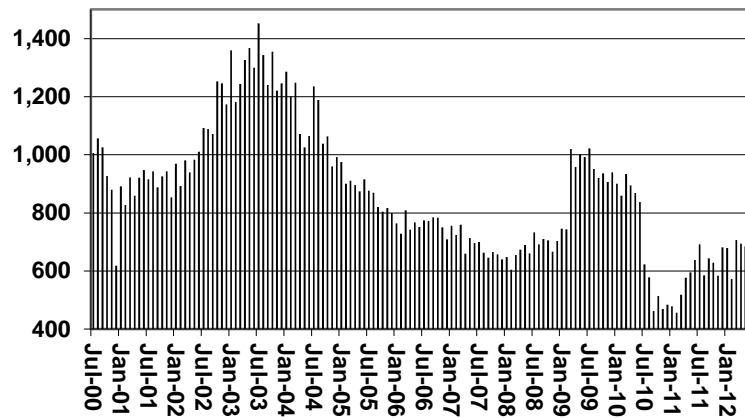
EXCLUDES: PRIOR MONTH NET TOTALS OF 438 CASES; 984 RECIPIENTS; \$29,317.

# CHART 1B

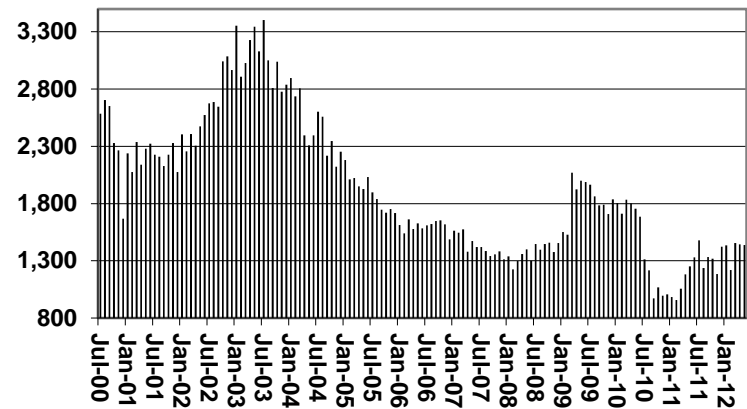
## CASH ASSISTANCE PROGRAM CASES WITH GRANT UNDER \$100

FOR 2000, 2001, 2002, 2003, 2004, 2005, 2006, 2007, 2008, 2009, 2010, 2011, & 2012

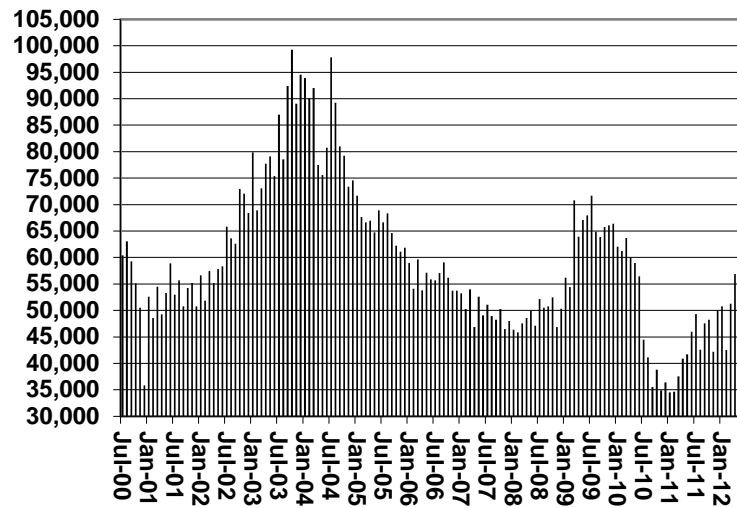
### Cases



### Recipients



### Payments



### Average Payment Per Recipient

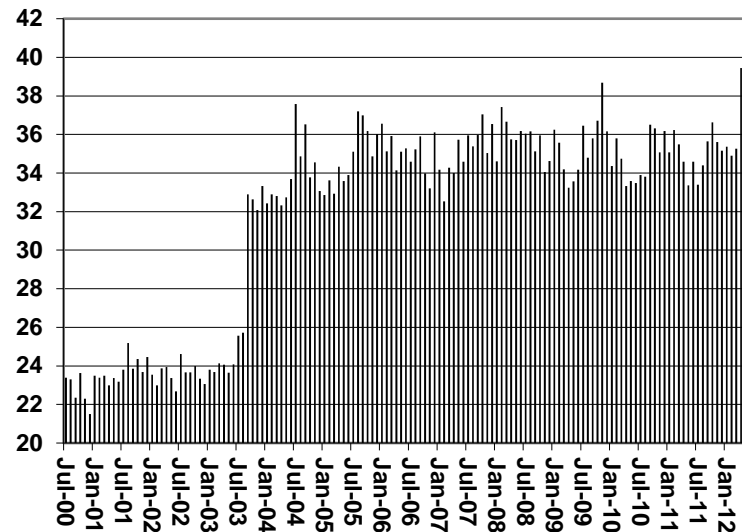


TABLE 1C 1/

CASH ASSISTANCE UNEMPLOYED PARENT PROGRAM: ARIZONA  
 CASES WITH GRANT UNDER \$100

	MAY 2012							CHANGE FROM			MAY 2011		
	FAMILIES (CASES)	PERSONS (RECIP.)	ADULTS	CHILDREN	TOTAL PAYMENTS	AVERAGE PAYMENT/ CASE	AVERAGE PAYMENT/ RECIP.	APRIL 2012			FAMILIES (CASES)	PERSONS (RECIP.)	TOTAL PAYMENTS
								FAMILIES (CASES)	PERSONS (RECIP.)	TOTAL PAYMENTS			
ARIZONA	14	51	24	27	880	62.86	17.25	1	9	156	(2)	0	(240)
REGION													
MARICOPA	8	28	12	16	460	57.50	16.43	3	11	214	(4)	(7)	(294)
NORTHERN	1	5	2	3	76	76.00	15.20	0	4	24	1	5	76
APACHE	0	0	0	0	0	0.00	0.00	0	0	0	0	0	0
COCONINO	0	0	0	0	0	0.00	0.00	(1)	(1)	(52)	0	0	0
MOHAVE	1	5	2	3	76	76.00	15.20	1	5	76	1	5	76
NAVAJO	0	0	0	0	0	0.00	0.00	0	0	0	0	0	0
CENTRAL	2	7	4	3	123	61.50	17.57	0	0	20	1	2	27
GILA	0	0	0	0	0	0.00	0.00	0	0	0	0	0	0
LA PAZ	0	0	0	0	0	0.00	0.00	0	0	0	0	0	0
PINAL	0	0	0	0	0	0.00	0.00	(1)	(3)	(40)	(1)	(5)	(96)
YAVAPAI	1	3	2	1	88	88.00	29.33	1	3	88	1	3	88
YUMA	1	4	2	2	35	35.00	8.75	0	0	(28)	1	4	35
SOUTHERN	3	11	6	5	221	73.67	20.09	(2)	(6)	(102)	0	0	(49)
COCHISE	0	0	0	0	0	0.00	0.00	(1)	(3)	(71)	0	0	0
GRAHAM	0	0	0	0	0	0.00	0.00	0	0	0	0	0	0
GREENLEE	0	0	0	0	0	0.00	0.00	(1)	(7)	(98)	0	0	0
PIMA	3	11	6	5	221	73.67	20.09	0	4	67	0	0	(49)
SANTA CRUZ	0	0	0	0	0	0.00	0.00	0	0	0	0	0	0

EXCLUDES: PRIOR MONTH NET TOTALS OF 31 CASES; 107 RECIPIENTS; \$1,616.



**TABLE 4**  
**TUBERCULOSIS CONTROL: ARIZONA 1/**

	MAY 2012					CHANGE FROM			MAY 2011		
	APRIL 2012		MAY 2011								
	NUMBER OF CASES	PERSONS (RECIP.)	TOTAL PAYMENTS	AVERAGE PAYMENT/ CASE	AVERAGE PAYMENT/ RECIP.	NUMBER OF CASES	PERSONS (RECIP.)	TOTAL PAYMENTS	NUMBER OF CASES	PERSONS (RECIP.)	TOTAL PAYMENTS
ARIZONA	3	3	404	134.67	134.67	0	0	0	(2)	(2)	(266)
REGION											
MARICOPA	2	2	346	173.00	173.00	0	0	0	(3)	(3)	(324)
NORTHERN	1	1	58	58.00	58.00	0	0	0	1	1	58
APACHE	0	0	0	0.00	0.00	0	0	0	0	0	0
COCONINO	0	0	0	0.00	0.00	0	0	0	0	0	0
MOHAVE	1	1	58	58.00	58.00	0	0	0	1	1	58
NAVAJO	0	0	0	0.00	0.00	0	0	0	0	0	0
CENTRAL	0	0	0	0.00	0.00	0	0	0	0	0	0
GILA	0	0	0	0.00	0.00	0	0	0	0	0	0
LA PAZ	0	0	0	0.00	0.00	0	0	0	0	0	0
PINAL	0	0	0	0.00	0.00	0	0	0	0	0	0
YAVAPAI	0	0	0	0.00	0.00	0	0	0	0	0	0
YUMA	0	0	0	0.00	0.00	0	0	0	0	0	0
SOUTHERN	0	0	0	0.00	0.00	0	0	0	0	0	0
COCHISE	0	0	0	0.00	0.00	0	0	0	0	0	0
GRAHAM	0	0	0	0.00	0.00	0	0	0	0	0	0
GREENLEE	0	0	0	0.00	0.00	0	0	0	0	0	0
PIMA	0	0	0	0.00	0.00	0	0	0	0	0	0
SANTA CRUZ	0	0	0	0.00	0.00	0	0	0	0	0	0

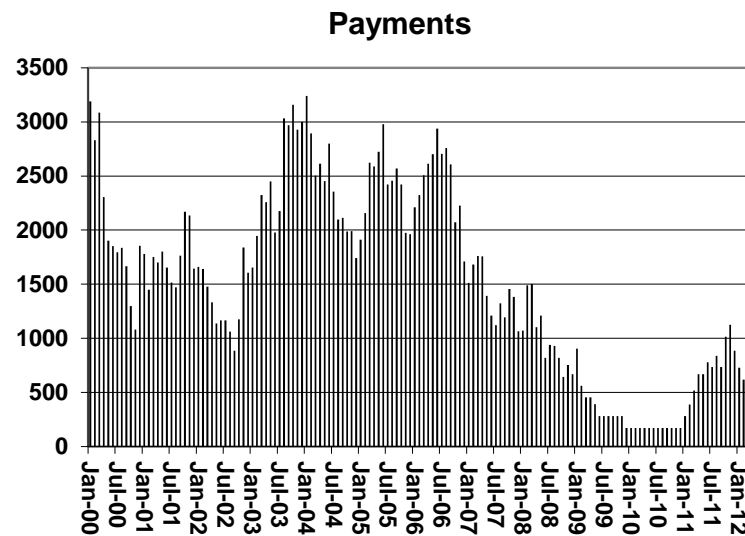
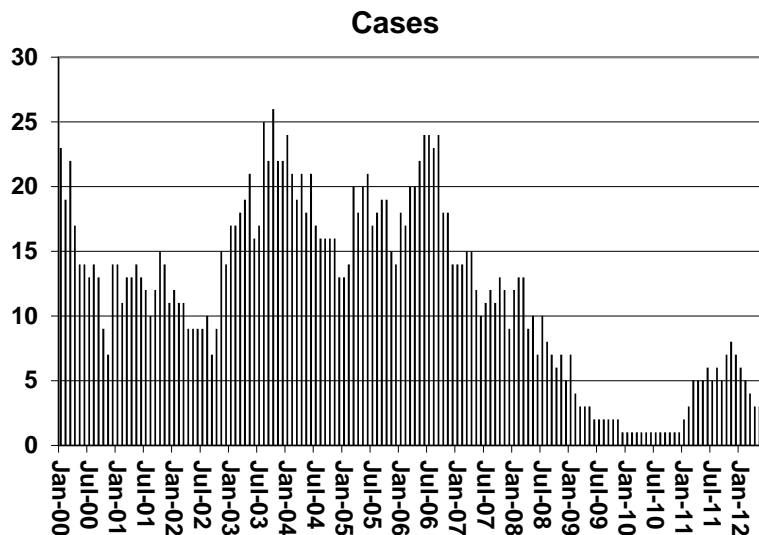
1/EXCLUDES: PRIOR MONTH NET TOTALS OF : 0 CASES; 0 RECIPIENTS; \$0.

# CHART 4

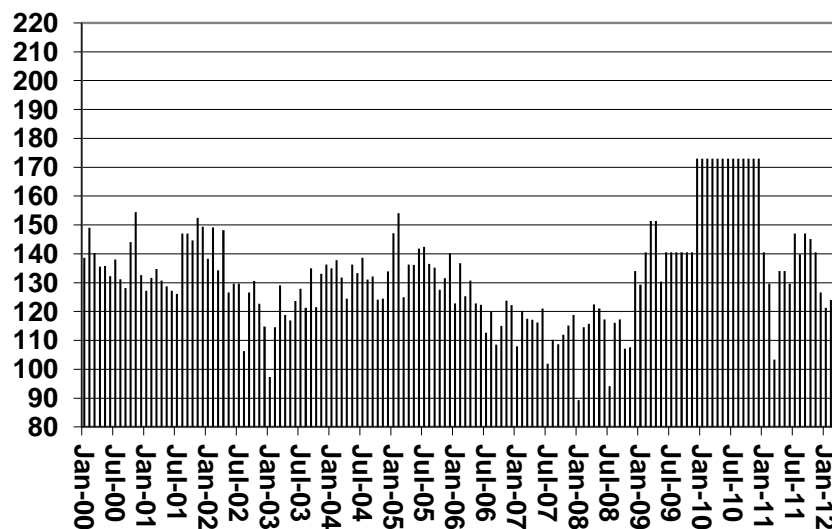
## TUBERCULOSIS CONTROL PROGRAM

### COMPARISON OF CASES, PAYMENTS & AVERAGE PAYMENTS

FOR 2000, 2001, 2002, 2003, 2004, 2005, 2006, 2007, 2008, 2009, 2010, 2011, & 2012



### Average Payment Per Case



**TABLE 6**  
**SUPPLEMENTAL NUTRITION ASSISTANCE PROGRAM: ARIZONA 1/**

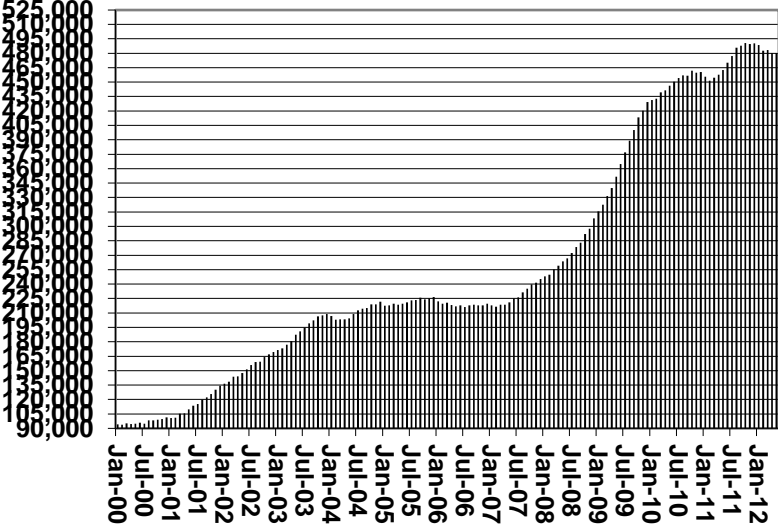
	CHANGE FROM												
	MAY 2012							APRIL 2012			MAY 2011		
	HOUSEHOLDS	PERSONS	ADULTS	CHILDREN	TOTAL PAYMENTS ISSUANCE	AVERAGE PAYMT./ HOUSEHOLD	AVERAGE PAYMT./ PERSON	HOUSEHOLDS	PERSONS	TOTAL PAYMENTS ISSUANCE	HOUSEHOLDS	PERSONS	TOTAL PAYMENTS ISSUANCE
ARIZONA	480,043	1,110,833	569,296	541,540	139,430,524	290.45	125.52	(123)	(1,231)	(147,777)	17,350	47,399	4,851,536
REGION													
MARICOPA	258,349	604,180	287,994	316,186	76,709,110	296.92	126.96	134	(288)	(110,691)	11,370	31,487	3,680,635
NORTHERN	56,393	134,698	76,519	58,179	16,758,062	297.17	124.41	(205)	(776)	(109,770)	3,205	6,251	757,704
APACHE	10,758	28,961	16,006	12,955	3,586,899	333.42	123.85	(3)	(13)	(8,817)	723	1,520	205,893
COCONINO	10,181	24,542	13,261	11,281	3,084,444	302.96	125.68	(128)	(394)	(43,411)	686	1,069	193,564
MOHAVE	21,368	45,188	27,271	17,917	5,620,170	263.02	124.37	(79)	(230)	(41,265)	903	1,757	144,336
NAVAJO	14,086	36,007	19,981	16,026	4,466,549	317.09	124.05	5	(139)	(16,277)	893	1,905	213,911
CENTRAL	63,885	151,667	82,417	69,252	18,465,785	289.05	121.75	233	783	240,670	2,901	8,022	754,188
GILA	6,187	13,614	7,908	5,706	1,752,805	283.30	128.75	(30)	(49)	(9,352)	77	298	16,797
LA PAZ	2,067	4,246	2,465	1,781	540,434	261.46	127.28	11	(2)	(2,600)	78	203	20,335
PINAL	23,318	58,157	30,049	28,109	7,216,102	309.46	124.08	47	86	(8,846)	952	2,948	288,623
YAVAPAI	15,887	32,012	19,299	12,713	3,923,001	246.93	122.55	(43)	(264)	(35,459)	960	1,895	199,224
YUMA	16,426	43,638	22,696	20,943	5,033,443	306.43	115.35	248	1,012	296,927	834	2,678	229,209
SOUTHERN	101,416	220,288	122,366	97,923	27,497,567	271.14	124.83	(285)	(950)	(167,986)	(126)	1,639	(340,991)
COCHISE	11,021	24,015	13,786	10,229	2,886,379	261.90	120.19	12	(23)	(10,135)	264	824	34,864
GRAHAM	3,416	7,895	4,366	3,530	143,987	42.15	18.24	(54)	(143)	(841,183)	(128)	(203)	(879,704)
GREENLEE	527	1,141	655	486	966,653	1834.26	847.20	(2)	(3)	820,784	19	29	825,632
PIMA	81,763	174,810	97,140	77,670	22,057,897	269.78	126.18	(324)	(925)	(160,146)	(525)	446	(368,053)
SANTA CRUZ	4,689	12,427	6,419	6,008	1,442,651	307.67	116.09	83	144	22,694	244	543	46,270

1/EXCLUDES: PRIOR MONTH NET TOTALS OF : 7,625 CASES; 20,787 RECIPIENTS; \$1,299,457.  
 AGED CANCELATIONS: 11,500 CASES; 14,041 RECIPIENTS; \$519,743.  
 SNAP CONVERSIONS: 0 CASES; 0 RECIPIENTS; \$0.  
 SNAP CHILD ONLY: 62,732 CASES; 148,755 RECIPIENTS; \$22,537,263.  
 SNAP ZERO PAY: 5,409 CASES; 20,687 RECIPIENTS.

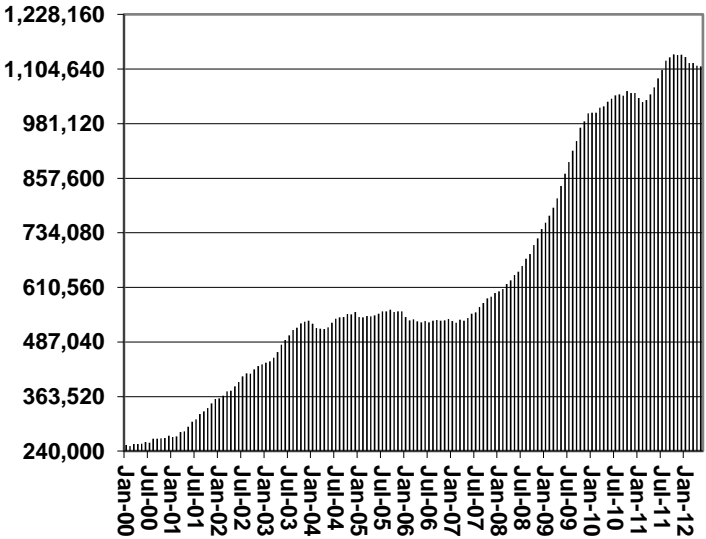
# CHART 6

## SUPPLEMENTAL NUTRITION ASSISTANCE PROGRAM (SNAP) COMPARISON OF HOUSEHOLDS, RECIPIENTS, PAYMENTS & AVERAGE PAYMENTS FOR 2000, 2001, 2002, 2003, 2004, 2005, 2006, 2007, 2008, 2009, 2010, 2011, & 2012

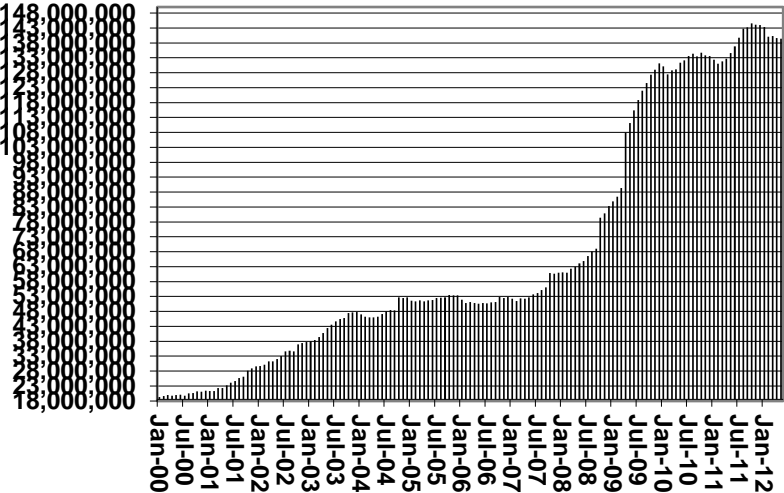
**Households**



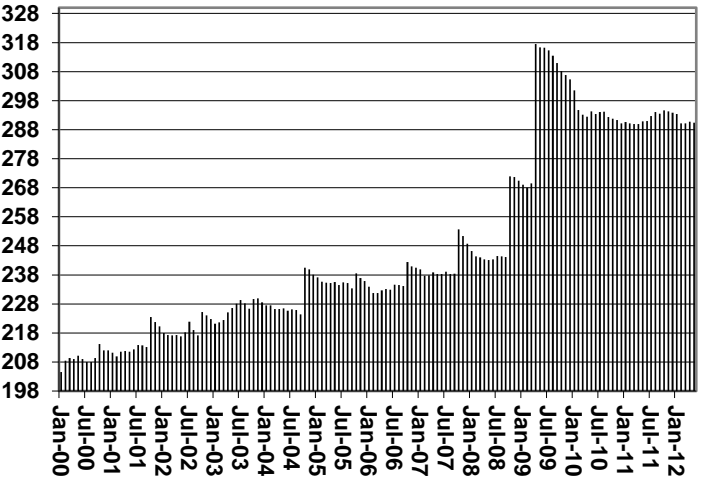
**Recipients**



**Payments**



**Average Payment Per Household**





**TABLE 7A**  
**MEDICAL ASSISTANCE PROGRAM**  
**RECIPIENTS**  
**MAY 2012**

	SOBRA WOMAN 133% FPL	SOBRA CHILD	ADULT W/O CHILD 100% FPL	FOSTER CARE	1931 36% FPL	FEDERAL EMERGENCY SERVICES	INFANTS	ADULT W/O CHILD 40% FPL	MEDICAL W/SPEND DOWN	SOBRA WOMAN 100% FPL	SOBRA CHILD 100% FPL	TRANSITIONAL MEDICAL T1 - T4	1931 100% FPL	YATI	OTHER	TOTAL CASES
ARIZONA	12,031	50,330	30,047	14,543	370,611	64,484	45,508	93,273	0	4,553	243,127	48,606	122,921	348	28,499	1,128,881
REGION																
MARICOPA	6,844	29,141	14,759	8,150	207,950	52,464	27,703	46,123	0	2,493	145,914	25,634	64,346	185	14,896	646,602
NORTHERN	1,255	4,806	3,478	684	47,803	1,124	4,449	14,943	0	518	23,387	5,240	14,521	23	2,932	125,163
APACHE	197	960	489	42	12,221	68	854	3,702	0	78	4,177	953	2,579	1	387	26,708
COCONINO	293	883	627	121	8,964	467	1,015	2,398	0	120	4,770	1,138	2,873	10	437	24,116
MOHAVE	434	1,569	1,548	355	12,710	369	1,374	4,561	0	182	8,697	1,865	5,279	9	1,585	40,537
NAVAJO	331	1,394	814	166	13,908	220	1,206	4,282	0	138	5,743	1,284	3,790	3	523	33,802
CENTRAL	1,802	6,957	4,364	1,663	48,289	4,057	5,741	12,195	0	733	30,443	7,855	18,394	41	4,395	146,929
GILA	133	431	377	109	4,856	112	461	1,561	0	54	2,044	496	1,334	3	351	12,322
LA PAZ	40	191	152	27	1,376	111	139	443	0	21	735	101	385	0	162	3,883
PINAL	639	3,034	1,233	641	20,845	1,307	2,177	4,707	0	276	11,372	2,524	6,306	15	1,363	56,439
YAVAPAI	424	1,403	1,343	566	8,312	1,214	1,049	2,712	0	134	6,552	1,559	3,978	21	1,184	30,451
YUMA	566	1,898	1,259	320	12,900	1,313	1,915	2,772	0	248	9,740	3,175	6,391	2	1,335	43,834
SOUTHERN	2,130	9,426	7,446	4,046	66,569	6,839	7,615	20,012	0	809	43,383	9,877	25,660	99	6,276	210,187
COCHISE	207	889	929	254	7,122	428	751	1,920	0	77	4,468	986	2,842	4	855	21,732
GRAHAM	95	333	245	85	2,744	27	334	777	0	33	1,394	409	856	1	165	7,498
GREENLEE	10	44	40	10	481	4	59	131	0	5	196	37	91	1	30	1,139
PIMA	1,708	7,706	5,735	3,658	52,639	5,975	6,067	16,329	0	642	34,282	7,682	19,947	93	4,769	167,232
SANTA CRUZ	110	454	497	39	3,583	405	404	855	0	52	3,043	763	1,924	0	457	12,586

**TABLE 7B**  
**MEDICAL ASSISTANCE PROGRAM**  
**RECIPIENTS**

**CHANGE FROM**

APRIL 2012

	SOBRA WOMAN 133% FPL	SOBRA CHILD	ADULT W/O CHILD 100% FPL	FOSTER CARE	1931 36% FPL	FEDERAL EMERGENCY SERVICES	INFANTS	ADULT W/O CHILD 40% FPL	MEDICAL W/SPEND DOWN	SOBRA WOMAN 100% FPL	SOBRA CHILD 100% FPL	TRANSITIONAL MEDICAL T1 - T4	1931 100% FPL	YATI	OTHER	TOTAL CASES
ARIZONA	143	(1,044)	(2,142)	102	(415)	1,263	(119)	(5,264)	0	126	1,278	(1,617)	518	0	(231)	(7,402)
REGION																
MARICOPA	40	(569)	(1,066)	50	(1,001)	1,093	48	(2,814)	0	49	854	(336)	267	0	(108)	(3,493)
NORTHERN	18	(154)	(252)	(11)	(88)	(9)	(46)	(733)	0	4	(29)	82	(64)	(3)	(41)	(1,326)
APACHE	(1)	(36)	(37)	1	(41)	(9)	(18)	(163)	0	5	34	(22)	22	0	3	(262)
COCONINO	6	(53)	(42)	(6)	(7)	7	(4)	(168)	0	(4)	(45)	41	(29)	(3)	7	(300)
MOHAVE	6	(28)	(108)	(1)	(60)	(3)	(13)	(217)	0	2	(27)	44	(66)	0	(36)	(507)
NAVAJO	7	(37)	(65)	(5)	20	(4)	(11)	(185)	0	1	9	19	9	0	(15)	(257)
CENTRAL	36	(111)	(322)	18	1,130	187	(77)	(657)	0	22	445	(1,174)	291	(1)	(14)	(227)
GILA	13	(20)	(28)	1	(15)	2	(12)	(73)	0	1	71	(8)	5	0	10	(53)
LA PAZ	1	10	(4)	0	(56)	(2)	0	(18)	0	6	48	(9)	19	(1)	(4)	(10)
PINAL	24	(27)	(107)	4	76	39	(16)	(254)	0	14	34	66	(27)	0	(5)	(179)
YAVAPAI	(9)	(37)	(93)	4	(116)	21	(34)	(155)	0	(1)	86	24	(4)	1	3	(310)
YUMA	7	(37)	(90)	9	1,241	127	(15)	(157)	0	2	206	(1,247)	298	(1)	(18)	325
SOUTHERN	49	(210)	(502)	45	(456)	(8)	(44)	(1,060)	0	51	8	(189)	24	4	(68)	(2,356)
COCHISE	5	(6)	(54)	(1)	(64)	19	(13)	(76)	0	2	9	24	8	0	(7)	(154)
GRAHAM	0	7	(14)	3	(77)	1	(11)	(51)	0	10	(1)	(28)	(20)	0	0	(181)
GREENLEE	(4)	4	0	0	2	0	0	(11)	0	(1)	8	(9)	(6)	0	(2)	(19)
PIMA	40	(187)	(421)	39	(368)	(28)	(26)	(876)	0	36	(11)	(113)	43	4	(55)	(1,923)
SANTA CRUZ	8	(28)	(13)	4	51	0	6	(46)	0	4	3	(63)	(1)	0	(4)	(79)

**TABLE 7C**  
**MEDICAL ASSISTANCE PROGRAM**  
**RECIPIENTS**

**CHANGE FROM**

MAY 2011

	SOBRA WOMAN 133% FPL	SOBRA CHILD	ADULT W/O CHILD 100% FPL	FOSTER CARE	1931 36% FPL	FEDERAL EMERGENCY SERVICES	INFANTS	ADULT W/O CHILD 40% FPL	MEDICAL W/SPEND DOWN	SOBRA WOMAN 100% FPL	SOBRA CHILD 100% FPL	TRANSITIONAL MEDICAL T1 - T4	3E 1931 100% FPL	YATI	OTHER	TOTAL CASES
ARIZONA	1,174	(18,014)	(34,111)	1,716	29,967	13,946	257	(80,833)	(6,609)	406	7,510	4,765	(3,439)	14	(831)	(84,082)
REGION																
MARICOPA	937	(10,229)	(16,916)	1,226	18,467	13,073	854	(42,625)	(3,544)	268	7,125	3,876	(1,352)	2	(310)	(29,148)
NORTHERN	(2)	(2,502)	(4,236)	20	3,785	96	(170)	(10,975)	(981)	(47)	(76)	395	(458)	7	(140)	(15,284)
APACHE	(6)	(446)	(623)	7	888	(6)	(19)	(2,213)	(188)	(42)	(58)	77	(93)	1	(32)	(2,753)
COCONINO	(5)	(543)	(961)	(16)	455	64	(51)	(2,259)	(148)	6	(67)	107	(179)	(2)	(12)	(3,611)
MOHAVE	23	(638)	(1,609)	7	1,053	16	(31)	(3,640)	(456)	(19)	99	168	(167)	6	(49)	(5,237)
NAVAJO	(14)	(875)	(1,043)	22	1,389	22	(69)	(2,863)	(189)	8	(50)	43	(19)	2	(47)	(3,683)
CENTRAL	135	(2,108)	(5,336)	145	4,591	303	(202)	(10,007)	(906)	178	600	228	(508)	4	(49)	(12,932)
GILA	30	(207)	(399)	8	159	(5)	(40)	(1,055)	(84)	13	102	42	(15)	1	(13)	(1,463)
LA PAZ	8	(71)	(118)	9	152	(22)	(2)	(382)	(14)	12	45	(64)	(14)	0	(2)	(463)
PINAL	46	(1,078)	(1,768)	47	2,139	96	(91)	(4,089)	(249)	83	306	222	(149)	(2)	21	(4,466)
YAVAPAI	11	(227)	(1,411)	61	782	100	(94)	(2,446)	(293)	15	270	(100)	(156)	5	(63)	(3,546)
YUMA	40	(525)	(1,640)	20	1,359	134	25	(2,035)	(266)	55	(123)	128	(174)	0	8	(2,994)
SOUTHERN	104	(3,175)	(7,623)	325	3,124	474	(225)	(17,226)	(1,178)	7	(139)	266	(1,121)	1	(332)	(26,718)
COCHISE	(9)	(367)	(965)	11	219	10	(34)	(1,439)	(158)	(19)	(8)	70	(16)	0	(42)	(2,747)
GRAHAM	(22)	(106)	(238)	16	(78)	8	(16)	(707)	(62)	8	(52)	62	(54)	0	(9)	(1,250)
GREENLEE	1	(11)	(22)	2	50	1	3	(108)	(11)	(1)	(51)	(10)	(12)	0	(4)	(173)
PIMA	124	(2,556)	(6,018)	290	2,699	466	(140)	(14,639)	(911)	8	69	66	(952)	2	(252)	(21,744)
SANTA CRUZ	10	(135)	(380)	6	234	(11)	(38)	(333)	(36)	11	(97)	78	(87)	(1)	(25)	(804)

# CHART 7

## MEDICAL ASSISTANCE PROGRAM

### COMPARISON OF RECIPIENTS

FOR 2000, 2001, 2002, 2003, 2004, 2005, 2006, 2007, 2008, 2009, 2010, 2011, & 2012

Total Recipients

