



DEPARTMENT OF ECONOMIC SECURITY

Your Partner For A Stronger Arizona

State of Arizona

Department of Economic Security

Family Assistance Administration

Statistical Bulletin

July, 2012

Phone: (602) 542-3678

<http://www.azdes.gov/appreports.aspx>

**** STATISTICAL BULLETIN ****
ARIZONA DEPARTMENT OF ECONOMIC SECURITY
FAMILY ASSISTANCE ADMINISTRATION
BOX 6123, PHOENIX, ARIZONA 85005
PHONE (602) 542-3678

JULY 2012

THIS ISSUE OF THE STATISTICAL BULLETIN COMPARES JULY 2012 DATA FOR EACH OF THE INDICATED PROGRAMS WITH THE INFORMATION FOR JUNE 2012 AND JULY 2011. STATEWIDE SUMMARIES OF ACTIVITY WITHIN EACH OF THE SPECIFIC PROGRAMS FOR THIS REPORT PERIOD ARE DISCUSSED BELOW. THE TABLES COMPARE CURRENT AND PRIOR MONTH DATA. DISTRICT AND COUNTY COMPARISONS ARE PROVIDED WITHIN THIS BULLETIN

TANF SUMMARY

COMPARING TO JUNE 2012, JULY 2012 CASES INCREASED BY 145 (0.83%) TO 17,629. RECIPIENTS INCREASED BY 400 (1.00%) TO 40,266. PAYMENTS INCREASED BY \$21,826 (0.60%) TO \$3,666,394. AVERAGE PAYMENT PER CASE DECREASED BY \$0.47 (0.23%) TO \$0.00. PAYEMENT PER RECIPIENT DECREASED BY \$0.37 (0.40%) TO \$91.05.

COMPARING TO JULY 2011, JULY 2012 CASES DECREASED BY 627 (3.43%). RECIPIENTS DECREASED BY 1,018 (2.47%). TOTAL PAYMENTS DECREASED BY \$157,370 (4.12%). THE AVERAGE PAYMENT PER CASE DECREASED BY \$1.47 (0.70%). THE AVERAGE PAYMENT PER RECIPIENT DECREASED BY \$1.57 (1.70%).

CASH ASSISTANCE (CA)

COMPARING TO JUNE 2012, JULY 2012 CASES INCREASED BY 133 (0.82%) TO 16,322. RECIPIENTS INCREASED BY 314 (0.87%) TO 36,539. PAYMENTS INCREASED BY \$22,651 (0.66%) TO \$3,454,004. AVERAGE PAYMENT PER CASE DECREASED BY \$0.34 (0.16%) TO \$211.62. PAYEMENT PER RECIPIENT DECREASED BY \$0.19 (0.20%) TO \$94.53.

COMPARING TO JULY 2011, JULY 2012 CASES DECREASED BY 796 (4.65%). RECIPIENTS DECREASED BY 1,557 (4.09%). TOTAL PAYMENTS DECREASED BY \$191,104 (5.24%). THE AVERAGE PAYMENT PER CASE DECREASED BY \$1.32 (0.62%). THE AVERAGE PAYMENT PER RECIPIENT DECREASED BY \$1.15 (1.20%).

CASH ASSISTANCE UNEMPLOYED PARENT PROGRAM (CA-UP)

COMPARING TO JUNE 2012, JULY 2012 CASES DECREASED BY 8 (1.45%) TO 544. RECIPIENTS DECREASED BY 3 (0.14%) TO 2,106. PAYMENTS DECREASED BY \$1,275 (0.80%) TO \$158,362. AVERAGE PAYMENT PER CASE INCREASED BY \$1.91 (0.66%) TO \$291.11. PAYEMENT PER RECIPIENT DECREASED BY \$0.49 (0.65%) TO \$75.20.

COMPARING TO JULY 2011, JULY 2012 CASES INCREASED BY 106 (24.20%). RECIPIENTS INCREASED BY 423 (25.13%). TOTAL PAYMENTS INCREASED BY \$29,541 (22.93%). THE AVERAGE PAYMENT PER CASE DECREASED BY \$3.01 (1.02%). THE AVERAGE PAYMENT PER RECIPIENT DECREASED BY \$1.34 (1.75%).

CASH ASSISTANCE WITH GRANT UNDER \$100 (CA-MOE)

COMPARING TO JUNE 2012, JULY 2012 CASES INCREASED BY 22 (3.01%) TO 754. RECIPIENTS INCREASED BY 102 (6.85%) TO 1,590. PAYMENTS INCREASED BY \$555 (1.05%) TO \$53,486. AVERAGE PAYMENT PER CASE DECREASED BY \$1.37 (1.89%) TO \$70.94. AVERAGE PAYEMENT PER RECIPIENT DECREASED BY \$1.93 (5.43%) TO \$33.64.

COMPARING TO JULY 2011, JULY 2012 CASES INCREASED BY 62 (8.96%). RECIPIENTS INCREASED BY 113 (7.65%). TOTAL PAYMENTS INCREASED BY \$4,161 (8.44%). THE AVERAGE PAYMENT PER CASE DECREASED BY \$0.34 (0.48%). THE AVERAGE PAYMENT PER RECIPIENT INCREASED BY \$0.24 (0.72%).

CASH ASSISTANCE UNEMPLOYED PARENT PROGRAM WITH GRANT UNDER \$100 (CA-UP-MOE) NEW PROGRAM STARTING 7/01

COMPARING TO JUNE 2012, JULY 2012 CASES DECREASED BY 2 (18.18%) TO 9. RECIPIENTS DECREASED BY 13 (29.55%) TO 31. PAYMENTS DECREASED BY \$105 (16.23%) TO \$542. AVERAGE PAYMENT PER CASE INCREASED BY \$1.40 (2.38%) TO \$60.22. PAYMENT PER RECIPIENT INCREASED BY \$2.78 (18.91%) TO \$17.48.

COMPARING TO JULY 2011, JULY 2012 CASES INCREASED BY 1 (12.50%). RECIPIENTS INCREASED BY 3 (0.46%). TOTAL PAYMENTS INCREASED BY \$32 (6.27%). THE AVERAGE PAYMENT PER CASE DECREASED BY \$3.53 (5.54%). THE AVERAGE PAYMENT PER RECIPIENT DECREASED BY \$0.73 (4.01%).

TUBERCULOSIS CONTROL PROGRAM (TC)

COMPARING TO JUNE 2012, JULY 2012 CASES DECREASED BY 1 (33.33%) TO 2. RECIPIENTS DECREASED BY 1 (33.33%) TO 2. PAYMENTS DECREASED BY \$58 (14.36%) TO \$346. AVERAGE PAYMENT PER CASE INCREASED BY \$73.31 (54.44%) TO \$207.98. AVERAGE PAYMENT PER RECIPIENT INCREASED BY \$38.33 (28.47%) TO \$173.00.

COMPARING TO JULY 2011, JULY 2012 CASES DECREASED BY 3 (60.00%). RECIPIENTS DECREASED BY 3 (60.00%). TOTAL PAYMENTS DECREASED BY \$389 (52.93%). THE AVERAGE PAYMENT PER CASE INCREASED BY \$60.98 (41.48%). THE AVERAGE PAYMENT PER RECIPIENT INCREASED BY \$26.00 (17.69%).

SUPPLEMENTAL NUTRITION ASSISTANCE PROGRAM (SNAP)

COMPARING TO JUNE 2012, JULY 2012 SUPPLEMENTAL NUTRITION ASSISTANCE HOUSEHOLDS INCREASED BY 584 (0.12%) TO 482,485. PERSONS RECEIVING SUPPLEMENTAL NUTRITION ASSISTANCE INCREASED BY 3,124 (0.28%) TO 1,119,607. TOTAL COUPON ISSUANCE INCREASED BY \$1,233,721 (0.88%) TO \$141,394,804. THE AVERAGE HOUSEHOLD ALLOTMENT INCREASED BY \$2.21 (0.76%) TO \$293.06. THE AVERAGE ALLOTMENT PER PERSON INCREASED BY \$0.75 (0.60%) TO \$126.29.

COMPARING TO JULY 2011, JULY 2012 SUPPLEMENTAL NUTRITION ASSISTANCE HOUSEHOLDS INCREASED BY 5,258 (1.10%). PERSONS RECEIVING SUPPLEMENTAL NUTRITION ASSISTANCE INCREASED BY 17,034 (1.54%). TOTAL COUPON ISSUANCE INCREASED BY \$1,684,558 (1.21%). THE AVERAGE ALLOTMENT PER HOUSEHOLD INCREASED BY \$0.31 (0.10%). THE AVERAGE ALLOTMENT PER PERSON DECREASED BY \$0.42 (0.33%).

MEDICAL ASSISTANCE PROGRAM (MA) NEW TABLE INCLUDES PROP. 204 CATEGORIES

COMPARING TO JUNE 2012, JULY 2012 TOTAL RECIPIENTS TOTAL RECIPIENTS INCREASED BY 390 (0.03%). SOBRA WOMEN AT 140% FPL INCREASED BY 469 (3.83%). SOBRA CHILDREN INCREASED BY 940 (1.69%). ADULTS W/O CHILD AT 100% DECREASED BY 1,982 (7.07%). FOSTER CARE INCREASED BY 75 (0.00%). 1931 AT 36% FPL INCREASED BY 4,621 (0.00%). EMERGENCY SERVICES INCREASED BY 1,212 (1.85%). INFANTS INCREASED BY 166 (0.36%). ADULT W/O CHILD AT 140% DECREASED BY 4,565 (5.16%). MEDICAL W/SPEND DOWN INCREASED BY 0 (100.00%). SOBRA WOMAN AT 100% INCREASED BY 119 (2.59%). SOBRA CHILD AT 100% INCREASED BY 598 (0.25%). TRANSITIONAL MEDICAL DECREASED BY 1,214 (2.58%). 1931 AT 100% INCREASED BY 61 (0.05%). YATI DECREASED BY 15 (4.19%). ALL OTHER CATEGORIES DECREASED BY 95 (0.33%).

COMPARING TO JULY 2011, JULY 2012 TOTAL RECIPIENTS TOTAL RECIPIENTS DECREASED BY 110,436 (8.95%). SOBRA WOMEN AT 140% FPL INCREASED BY 1,422 (12.59%). SOBRA CHILDREN DECREASED BY 13,622 (19.41%). ADULTS W/O CHILD AT 100% DECREASED BY 37,883 (59.26%). FOSTER CARE INCREASED BY 1,621 (12.30%). 1931 AT 36% FPL INCREASED BY 18,164 (5.11%). EMERGENCY SERVICES INCREASED BY 13,470 (25.37%). INFANTS INCREASED BY 9 (0.02%). ADULT W/O CHILD AT 140% DECREASED BY 91,566 (52.20%). MEDICAL W/SPEND DOWN DECREASED BY 3,518 (100.00%). SOBRA WOMAN AT 100% INCREASED BY 528 (12.63%). SOBRA CHILD AT 100% INCREASED BY 4,340 (1.82%). TRANSITIONAL MEDICAL INCREASED BY 3,292 (7.75%). 1931 AT 100% DECREASED BY 5,141 (4.04%). YATI INCREASED BY 3 (0.88%). ALL OTHER CATEGORIES DECREASED BY 1,555 (5.21%).

TANF SUMMARY

TABLES 1, 1A, 1B, & 1C: ARIZONA 1/

	JULY 2012							CHANGE FROM			JUNE 2012			JULY 2011		
	FAMILIES (CASES)	PERSONS (RECIP.)	ADULTS	CHILDREN	TOTAL PAYMENTS	AVERAGE	AVERAGE	FAMILIES (CASES)	PERSONS (RECIP.)	TOTAL PAYMENTS	FAMILIES (CASES)	PERSONS (RECIP.)	TOTAL PAYMENTS			
						PAYMENT/ CASE	PAYMENT/ RECIP.									
ARIZONA	17,629	40,266	11,195	29,071	3,666,394	207.98	91.05	145	400	21,826	(627)	(1,018)	(157,370)			
REGION																
MARICOPA	11,208	26,185	7,168	19,017	2,332,806	208.14	89.09	130	282	24,653	(47)	170	(31,357)			
NORTHERN	950	2,076	609	1,467	190,188	200.20	91.61	(26)	(66)	(8,960)	(75)	(235)	(19,101)			
APACHE	37	96	23	73	8,338	225.35	86.85	(1)	0	(76)	(3)	6	378			
COCONINO	75	177	55	122	14,853	198.04	83.92	(7)	(25)	(1,810)	15	31	2,077			
MOHAVE	586	1,243	367	876	116,449	198.72	93.68	(18)	(43)	(5,839)	(25)	(91)	(8,699)			
NAVAJO	252	560	164	396	50,548	200.59	90.26	0	2	(1,235)	(62)	(181)	(12,857)			
CENTRAL	2,068	4,568	1,335	3,233	433,830	209.78	94.97	63	209	16,740	44	200	11,745			
GILA	419	862	324	538	98,624	235.38	114.41	25	59	6,372	(13)	(50)	(4,727)			
LA PAZ	55	132	35	97	11,176	203.20	84.67	3	14	788	(15)	(15)	(2,450)			
PINAL	871	1,941	535	1,406	175,536	201.53	90.44	24	85	7,173	60	193	16,064			
YAVAPAI	301	620	162	458	58,178	193.28	93.84	(5)	(15)	(1,904)	34	103	6,811			
YUMA	422	1,013	279	734	90,316	214.02	89.16	16	66	4,311	(22)	(31)	(3,953)			
SOUTHERN	3,403	7,437	2,083	5,354	709,570	208.51	95.41	(22)	(25)	(10,607)	(549)	(1,153)	(118,657)			
COCHISE	343	708	174	534	69,924	203.86	98.76	(16)	(9)	(2,920)	5	47	1,548			
GRAHAM	217	461	146	315	51,250	236.18	111.17	0	(7)	(218)	(9)	(6)	(1,443)			
GREENLEE	15	36	9	27	2,893	192.87	80.36	(2)	(5)	(932)	3	7	(104)			
PIMA	2,721	5,980	1,693	4,287	562,824	206.84	94.12	1	5	(5,279)	(561)	(1,254)	(122,393)			
SANTA CRUZ	107	252	61	191	22,679	211.95	90.00	(5)	(9)	(1,258)	13	53	3,735			

1/EXCLUDES: PRIOR MONTH NET TOTALS OF 817 CASES; 2,122 RECIPIENTS; \$114,189.
 GRANT DIVERSION TOTALS OF: 627 CASES; \$512,034.
 ZERO PAY TOTALS OF 1,415 CASES; 4,374 RECIPIENTS.
 RRP: 162 CASES; 257 RECIPIENTS; \$33,901.
 1/INCLUDES: TANF CHILD ONLY: 9,083 CASES; 15,436 RECIPIENTS; \$1,784,103.

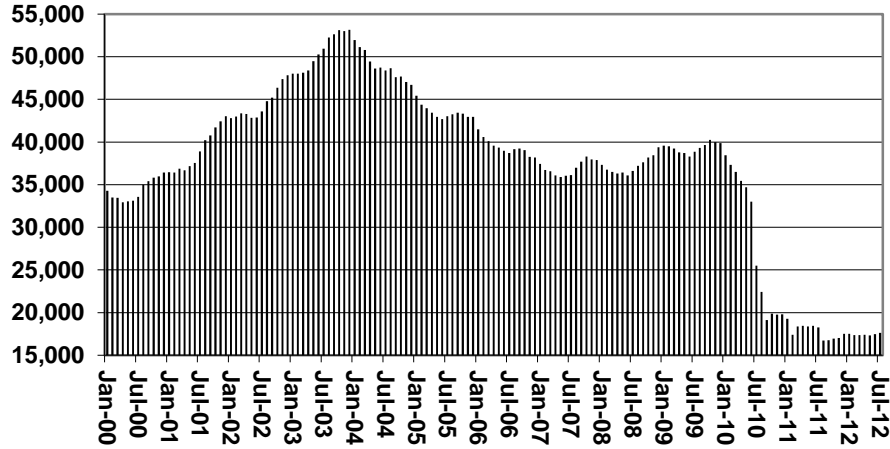
	CURRENT MO. CASES	CURRENT MO. RECIP.	CURRENT MO. DOLLARS	PRIOR MO. CASES	PRIOR MO. RECIP	PRIOR MO. DOLLARS
PASQUAYAUQUI	234	676	\$69,616	17	60	\$5,211
WM APACHE	0	0	\$0	0	0	\$0
SALT RIVER	75	256	\$22,820	6	21	\$540
SAN CARLOS	440	919	\$108,977	15	32	\$1,490
HOPÍ	81	203	\$17,730	3	10	\$133
TOTAL	830	2,054	\$219,143	41	123	\$7,374

TANF SUMMARY

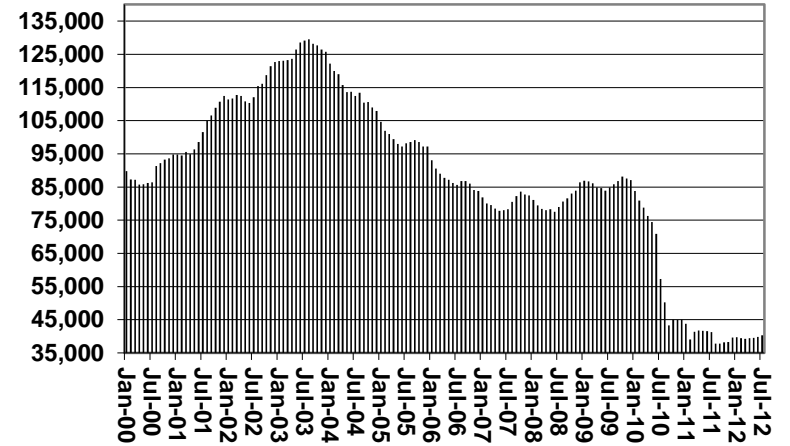
TABLES 1, 1A, 1B, & 1C

COMPARISON OF CASES, RECIPIENTS, PAYMENTS & AVERAGE PAYMENTS
FOR 2000, 2001, 2002, 2003, 2004, 2005, 2006, 2007, 2008, 2009, 2010, 2011, & 2012

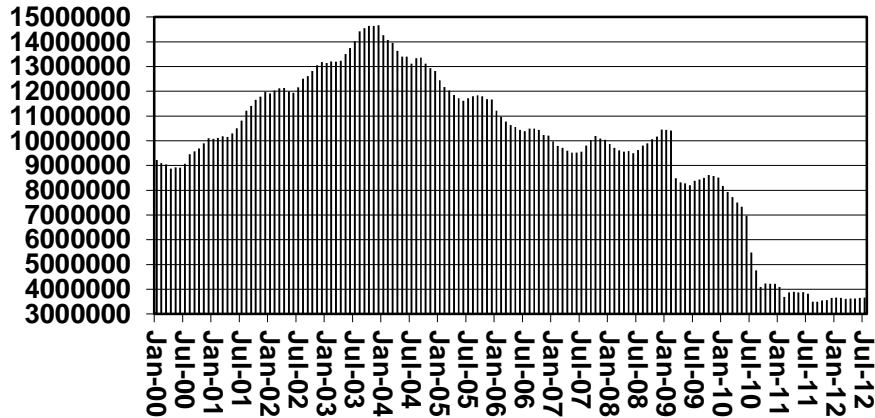
Cases



Recipients



Payments



Average Payments Per Recipient

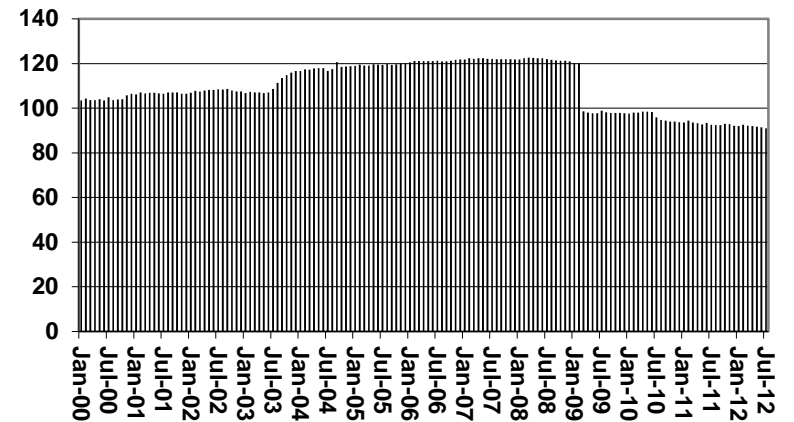


TABLE 1
CASH ASSISTANCE: ARIZONA 1/

	JULY 2012							CHANGE FROM			JUNE 2012			JULY 2011		
	FAMILIES (CASES)	(RECIPIENT)	ADULTS	CHILDREN	TOTAL PAYMENTS	AVERAGE PAYMENT/ CASE	AVERAGE PAYMENT/ RECIPIENT	FAMILIES (CASES)	PERSONS (RECIPIENT)	TOTAL PAYMENTS	FAMILIES (CASES)	PERSONS (RECIPIENT)	TOTAL PAYMENTS	FAMILIES (CASES)	PERSONS (RECIPIENT)	TOTAL PAYMENTS
	ARIZONA	16,322	36,539	9,718	26,821	3,454,004	211.62	94.53	133	314	22,651	(796)	(1,557)	(191,104)		
REGION																
MARICOPA	10,411	23,907	6,324	17,583	2,211,319	212.40	92.50	140	243	26,761	(152)	(216)	(48,262)			
NORTHERN	873	1,862	519	1,343	177,363	203.16	95.25	(29)	(63)	(7,758)	(71)	(205)	(17,130)			
APACHE	31	79	15	64	7,092	228.77	89.77	(2)	(2)	(31)	(3)	10	729			
COCONINO	67	155	48	107	13,852	206.75	89.37	(2)	(11)	(937)	14	26	1,735			
MOHAVE	538	1,109	308	801	108,372	201.43	97.72	(22)	(48)	(5,275)	(27)	(82)	(7,111)			
NAVAJO	237	519	148	371	48,047	202.73	92.58	(3)	(2)	(1,515)	(55)	(159)	(12,483)			
CENTRAL	1,887	4,056	1,098	2,958	399,579	211.75	98.52	36	119	11,161	(42)	(93)	(9,822)			
GILA	371	716	242	474	85,327	229.99	119.17	16	29	3,614	(58)	(191)	(17,791)			
LA PAZ	49	112	27	85	10,098	206.08	90.16	1	8	555	(15)	(26)	(3,163)			
PINAL	793	1,726	443	1,283	163,063	205.63	94.47	19	82	6,992	31	124	11,132			
YAVAPAI	277	560	139	421	55,068	198.80	98.34	(7)	(23)	(1,976)	30	93	6,671			
YUMA	397	942	247	695	86,023	216.68	91.32	12	66	4,147	(25)	(32)	(3,990)			
SOUTHERN	3,151	6,714	1,777	4,937	665,743	211.28	99.16	(19)	(28)	(9,684)	(536)	(1,104)	(118,571)			
COCHISE	329	673	160	513	68,154	207.16	101.27	(8)	0	(2,401)	7	41	1,691			
GRAHAM	202	415	123	292	47,275	234.03	113.92	1	(3)	(180)	(21)	(43)	(4,659)			
GREENLEE	14	34	8	26	2,876	205.43	84.59	(1)	(2)	(723)	2	5	(121)			
PIMA	2,510	5,375	1,434	3,941	526,605	209.80	97.97	(3)	(3)	(4,804)	(529)	(1,133)	(117,599)			
SANTA CRUZ	96	217	52	165	20,833	217.01	96.00	(8)	(20)	(1,576)	5	26	2,117			

1/EXCLUDES: PRIOR MONTH NET TOTALS OF: 308 CASES; 809 RECIPIENTS; \$76,056.
GRANT DIVERSION TOTALS OF: 627 CASES; \$512,034.
ZERO PAY TOTALS OF 1,406 CASES; 4,330 RECIPIENTS.

CASES WITH GRANT UNDER \$100 (SEE TABLE 1B).

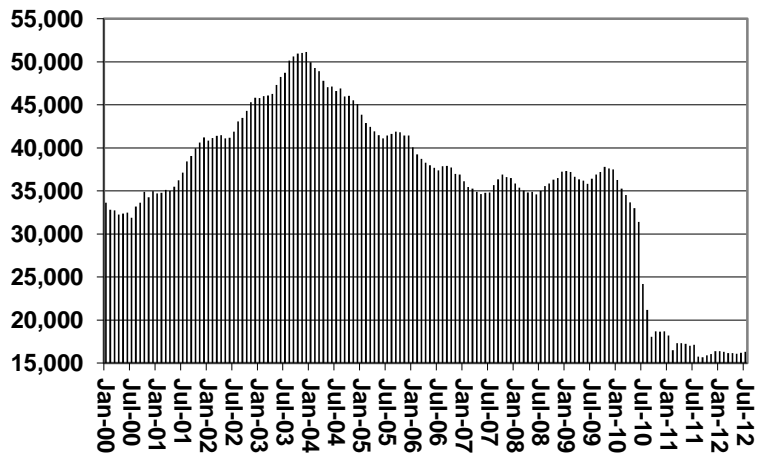
	CURRENT MO. CASES	CURRENT MO. RECIPIENT	CURRENT MO. DOLLARS	PRIOR MO. CASES	PRIOR MO. RECIPIENT	PRIOR MO. DOLLARS
PASQUA/YAQUI	224	627	\$65,411	13	40	\$4,021
WM APACHE	0	0	\$0	0	0	\$0
SALT RIVER	75	256	\$22,820	6	21	\$540
SAN CARLOS	394	767	\$94,692	12	23	\$1,098
HOPI	80	200	\$17,512	3	10	\$133
TOTAL	773	1,850	\$200,435	34	94	\$5,792

CHART 1

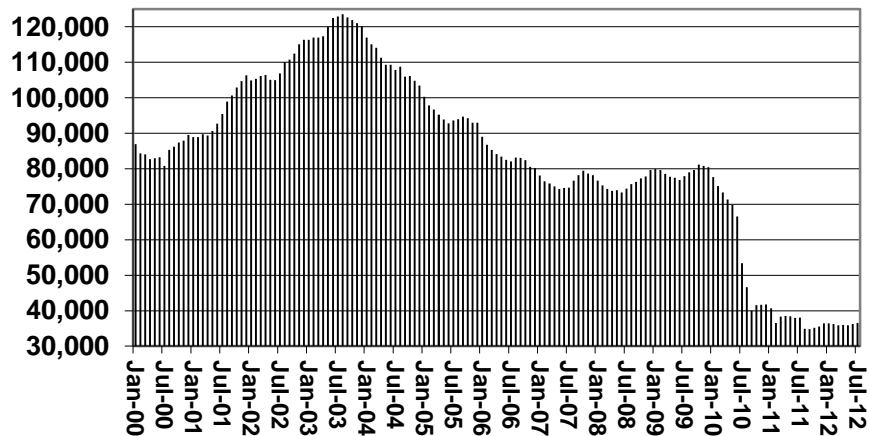
CASH ASSISTANCE PROGRAM

COMPARISON OF CASES, RECIPIENTS, PAYMENTS & AVERAGE PAYMENTS FOR 2000, 2001, 2002, 2003, 2004, 2005, 2006, 2007, 2008, 2009, 2010, 2011, & 2012

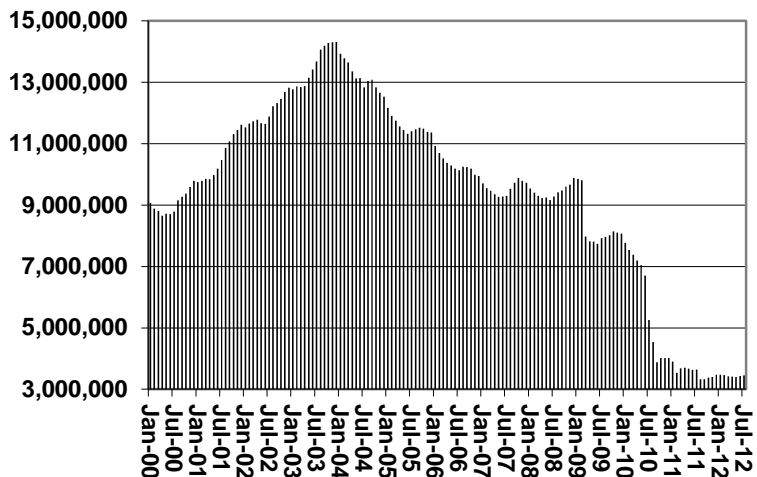
Cases



Recipients



Payments



Average Payment Per Recipient

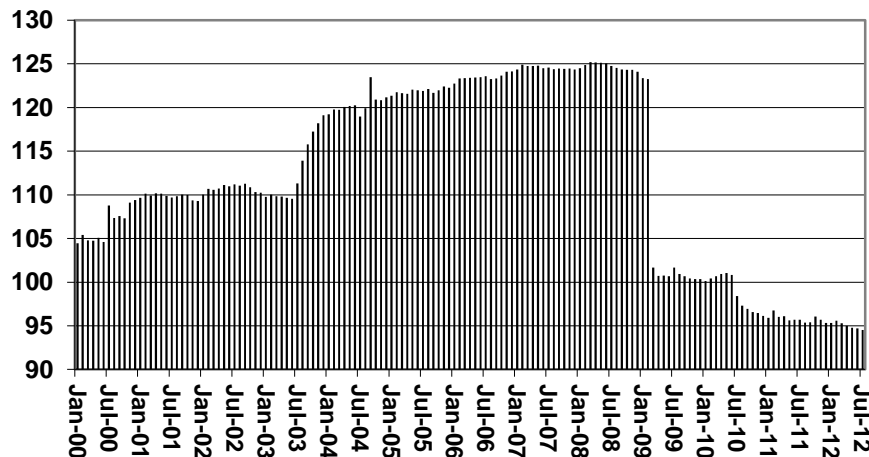


TABLE 1A
CA-UP

CASH ASSISTANCE UNEMPLOYED PARENT PROGRAM: ARIZONA 1/

	JULY 2012							CHANGE FROM			JUNE 2012			JULY 2011		
	FAMILIES (CASES)	PERSONS (RECIPIENT)	ADULTS	CHILDREN	TOTAL PAYMENTS	AVERAGE PAYMENT/ CASE	AVERAGE PAYMENT/ RECIPIENT	FAMILIES (CASES)	PERSONS (RECIPIENT)	TOTAL PAYMENTS	FAMILIES (CASES)	PERSONS (RECIPIENT)	TOTAL PAYMENTS	FAMILIES (CASES)	PERSONS (RECIPIENT)	TOTAL PAYMENTS
	ARIZONA	544	2,106	1,003	1,103	158,362	291.11	75.20	(8)	(3)	(1,275)	106	423	29,541		
REGION																
MARICOPA	282	1,145	521	624	85,236	302.26	74.44	(13)	(8)	(2,066)	35	194	11,997			
NORTHERN	34	131	63	68	9,734	286.29	74.31	(5)	(24)	(1,594)	(2)	(15)	(1,629)			
APACHE	4	13	6	7	1,108	277.00	85.23	(1)	(2)	(183)	0	(5)	(287)			
COCONINO	2	10	4	6	609	304.50	60.90	(2)	(9)	(603)	1	7	262			
MOHAVE	22	81	42	39	6,199	281.77	76.53	(2)	(12)	(815)	(3)	(22)	(1,880)			
NAVAJO	6	27	11	16	1,818	303.00	67.33	0	(1)	7	0	5	276			
CENTRAL	100	358	188	170	28,168	281.68	78.68	6	24	2,417	61	207	17,293			
GILA	43	140	81	59	12,840	298.60	2.13	7	28	2,611	43	140	12,840			
LA PAZ	2	9	4	5	687	343.50	76.33	0	0	0	2	9	687			
PINAL	36	138	67	71	9,358	259.94	67.81	(1)	(4)	(194)	16	58	3,766			
YAVAPAI	7	26	12	14	1,937	276.71	74.50	1	2	154	(2)	(4)	(305)			
YUMA	12	45	24	21	3,346	278.83	74.36	(1)	(7)	(305)	2	2	(99)			
SOUTHERN	128	472	231	241	35,224	275.19	74.63	4	10	119	12	39	2,284			
COCHISE	4	14	8	6	1,102	275.50	78.71	0	0	120	1	6	326			
GRAHAM	13	41	21	20	3,870	0.00	0.00	0	(4)	132	11	33	3,200			
GREENLEE	0	0	0	0	0	0.00	0.00	(1)	(3)	(209)	0	0	0			
PIMA	108	401	197	204	29,019	268.69	72.37	5	18	(42)	(3)	(16)	(2,475)			
SANTA CRUZ	3	16	5	11	1,233	411.00	0.00	0	(1)	118	3	16	1,233			

1/EXCLUDES: PRIOR MONTH NET TOTALS OF: 45 CASES; 181 RECIPIENTS; \$12,154.
GRANT DIVERSION TOTALS OF: 0 CASES; \$0.
ZERO PAY TOTALS OF 9 CASES; 44 RECIPIENTS.

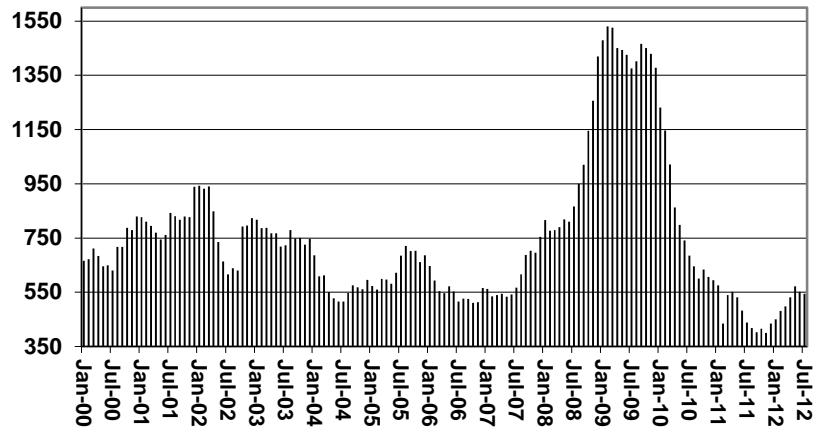
CASES WITH GRANT UNDER \$100 (SEE TABLE 1C).

	CURRENT MO. CASES	CURRENT MO. RECIPIENT	CURRENT MO. DOLLARS	PRIOR MO. CASES	PRIOR MO. RECIPIENT	PRIOR MO. DOLLARS
PASQUAYQUI	10	49	\$4,205	4	20	\$1,190
WM APACHE	0	0	\$0	0	0	\$0
SALT RIVER	0	0	\$0	0	0	\$0
SAN CARLOS	46	152	\$14,285	3	9	\$392
HOPI	1	3	\$218	0	0	\$0
TOTAL	57	204	\$18,708	7	29	\$1,582

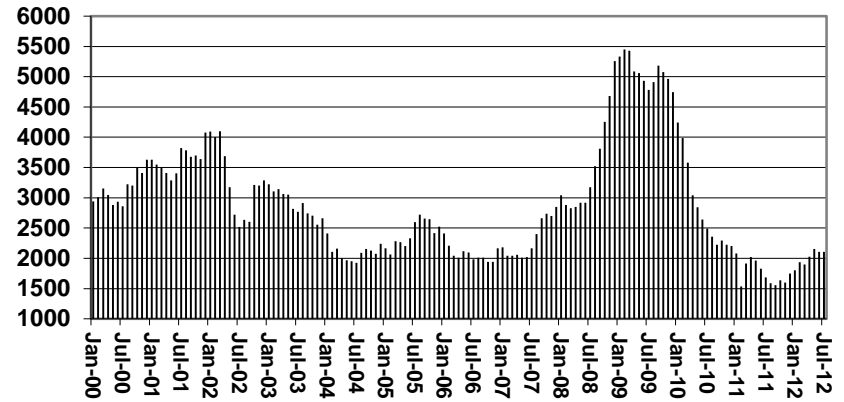
CHART 1A

CASH ASSISTANCE UNEMPLOYED PARENT PROGRAM COMPARISON OF CASES, RECIPIENTS, PAYMENTS & AVERAGE PAYMENTS FOR 2000, 2001, 2002, 2003, 2004, 2005, 2006, 2007, 2008, 2009, 2010, 2011, & 2012

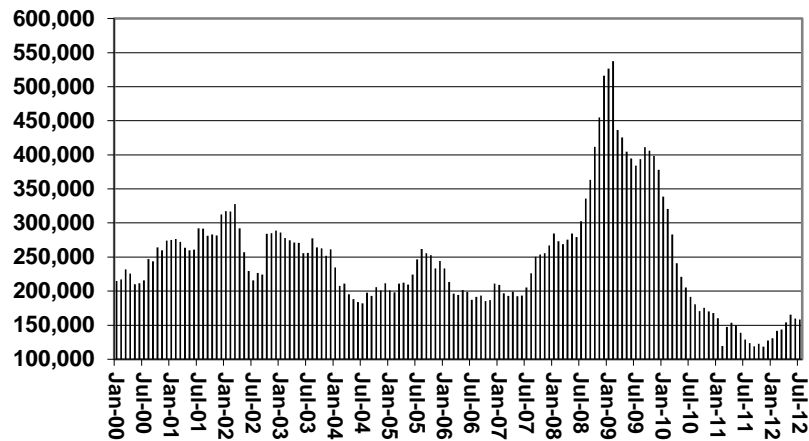
Cases



Recipients



Payments



Average Payment Per Recipient

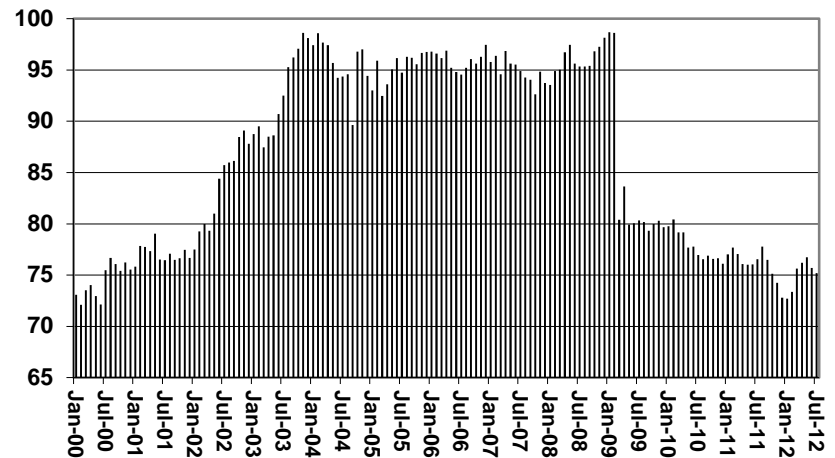


TABLE 1B 1/

CASH ASSISTANCE: ARIZONA
CASES WITH GRANT UNDER \$100

	JULY 2012							CHANGE FROM			JUNE 2012			JULY 2011		
	FAMILIES (CASES)	PERSONS (RECIP.)	ADULTS	CHILDREN	TOTAL PAYMENTS	AVERAGE PAYMENT/ CASE	AVERAGE PAYMENT/ RECIP.	FAMILIES (CASES)	PERSONS (RECIP.)	TOTAL PAYMENTS	FAMILIES (CASES)	PERSONS (RECIP.)	TOTAL PAYMENTS	FAMILIES (CASES)	PERSONS (RECIP.)	TOTAL PAYMENTS
ARIZONA	754	1,590	458	1,132	53,486	70.94	33.64	22	102	555	62	113	4,161			
REGION																
MARICOPA	511	1,117	316	801	35,981	70.41	32.21	5	56	25	69	184	4,808			
NORTHERN	43	83	27	56	3,091	71.88	37.24	8	21	392	(2)	(15)	(342)			
APACHE	2	4	2	2	138	69.00	34.50	2	4	138	0	1	(64)			
COCONINO	6	12	3	9	392	65.33	32.67	(3)	(5)	(270)	0	(2)	80			
MOHAVE	26	53	17	36	1,878	72.23	35.43	6	17	251	5	13	292			
NAVAJO	9	14	5	9	683	75.89	48.79	3	5	273	(7)	(27)	(650)			
CENTRAL	80	151	47	104	6,032	75.40	39.95	16	28	1,129	20	29	1,962			
GILA	5	6	1	5	457	91.40	76.17	2	2	147	2	1	224			
LA PAZ	4	11	4	7	391	97.75	35.55	2	6	233	(2)	2	26			
PINAL	42	77	25	52	3,115	74.17	40.45	7	10	413	14	16	1,182			
YAVAPAI	16	31	9	22	1,122	70.13	36.19	0	3	(133)	5	11	394			
YUMA	13	26	8	18	947	72.85	36.42	5	7	469	1	(1)	136			
SOUTHERN	120	239	68	171	8,382	69.85	35.07	(7)	(3)	(991)	(25)	(85)	(2,267)			
COCHISE	10	21	6	15	668	66.80	31.81	(8)	(9)	(639)	(3)	0	(469)			
GRAHAM	1	2	1	1	67	67.00	33.50	(2)	(3)	(208)	0	1	(22)			
GREENLEE	1	2	1	1	17	17.00	8.50	0	0	0	1	2	17			
PIMA	100	195	56	139	7,017	70.17	35.98	0	(3)	(344)	(28)	(99)	(2,178)			
SANTA CRUZ	8	19	4	15	613	76.63	32.26	3	12	200	5	11	385			

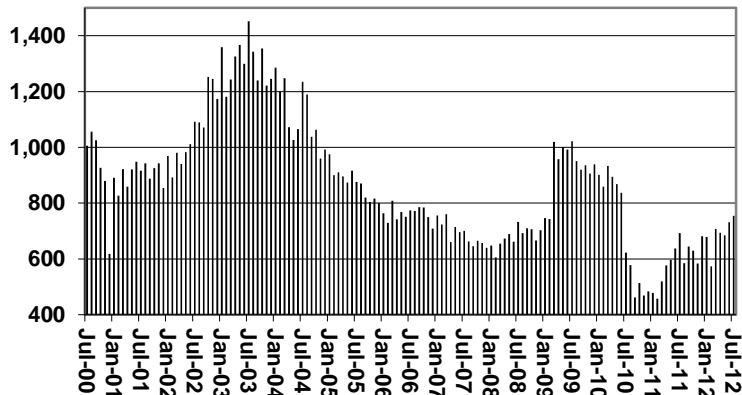
EXCLUDES: PRIOR MONTH NET TOTALS OF 428 CASES; 993 RECIPIENTS; \$24,263.

CHART 1B

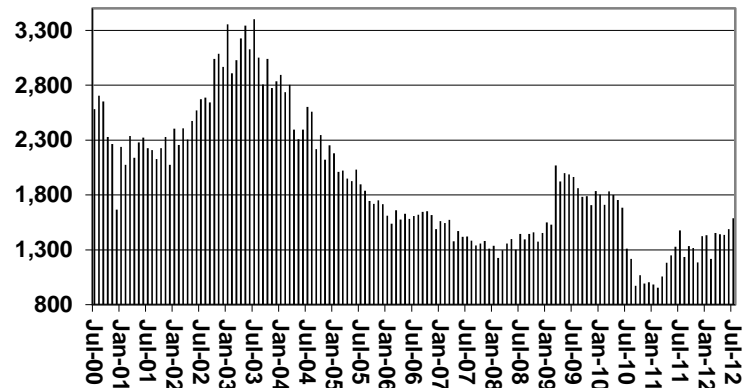
CASH ASSISTANCE PROGRAM CASES WITH GRANT UNDER \$100

FOR 2000, 2001, 2002, 2003, 2004, 2005, 2006, 2007, 2008, 2009, 2010, 2011, & 2012

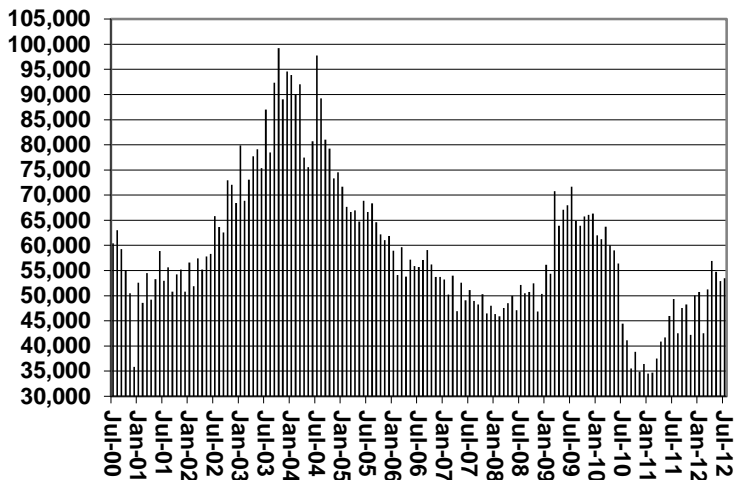
Cases



Recipients



Payments



Average Payment Per Recipient

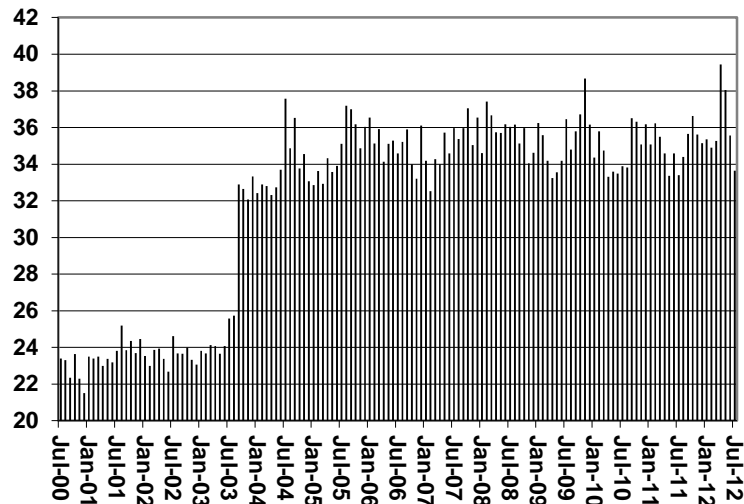


TABLE 1C 1/

CASH ASSISTANCE UNEMPLOYED PARENT PROGRAM: ARIZONA
 CASES WITH GRANT UNDER \$100

	JULY 2012							CHANGE FROM			JUNE 2012			JULY 2011		
	FAMILIES (CASES)	PERSONS (RECIP.)	ADULTS	CHILDREN	TOTAL PAYMENTS	AVERAGE PAYMENT/ CASE	AVERAGE PAYMENT/ RECIP.	FAMILIES (CASES)	PERSONS (RECIP.)	TOTAL PAYMENTS	FAMILIES (CASES)	PERSONS (RECIP.)	TOTAL PAYMENTS	FAMILIES (CASES)	PERSONS (RECIP.)	TOTAL PAYMENTS
ARIZONA	9	31	16	15	542	60.22	17.48	(2)	(13)	(105)	1	3	32			
REGION																
MARICOPA	4	16	7	9	270	67.50	16.88	(2)	(9)	(67)	1	8	100			
NORTHERN	0	0	0	0	0	0.00	0.00	0	0	0	0	0	0			
APACHE	0	0	0	0	0	0.00	0.00	0	0	0	0	0	0			
COCONINO	0	0	0	0	0	0.00	0.00	0	0	0	0	0	0			
MOHAVE	0	0	0	0	0	0.00	0.00	0	0	0	0	0	0			
NAVAJO	0	0	0	0	0	0.00	0.00	0	0	0	0	0	0			
CENTRAL	1	3	2	1	51	51.00	17.00	0	0	13	0	(2)	35			
GILA	0	0	0	0	0	0.00	0.00	0	0	0	0	0	0			
LA PAZ	0	0	0	0	0	0.00	0.00	0	0	0	0	0	0			
PINAL	0	0	0	0	0	0.00	0.00	(1)	(3)	(38)	(1)	(5)	(16)			
YAVAPAI	1	3	2	1	51	51.00	17.00	1	3	51	1	3	51			
YUMA	0	0	0	0	0	0.00	0.00	0	0	0	0	0	0			
SOUTHERN	4	12	7	5	221	55.25	18.42	0	(4)	(51)	0	(3)	(103)			
COCHISE	0	0	0	0	0	0.00	0.00	0	0	0	0	0	0			
GRAHAM	1	3	1	2	38	38.00	12.67	1	3	38	1	3	38			
GREENLEE	0	0	0	0	0	0.00	0.00	0	0	0	0	0	0			
PIMA	3	9	6	3	183	61.00	20.33	(1)	(7)	(89)	(1)	(6)	(141)			
SANTA CRUZ	0	0	0	0	0	0.00	0.00	0	0	0	0	0	0			

EXCLUDES: PRIOR MONTH NET TOTALS OF 36 CASES; 139 RECIPIENTS; \$1,716.

CHART 1C

CASH ASSISTANCE UNEMPLOYED PARENT PROGRAM

CASES WITH GRANT UNDER \$100

FOR 2000, 2001, 2002, 2003, 2004, 2005, 2006, 2007, 2008, 2009, 2010, 2011, & 2012

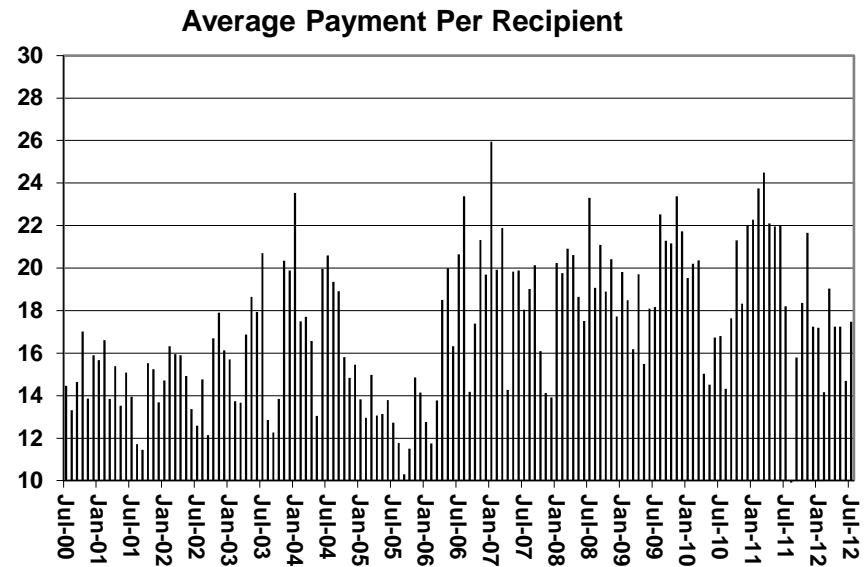
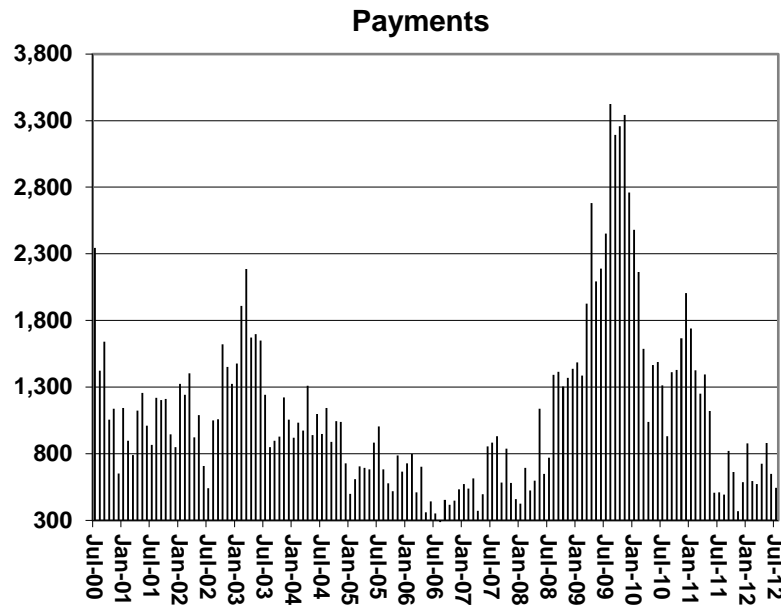
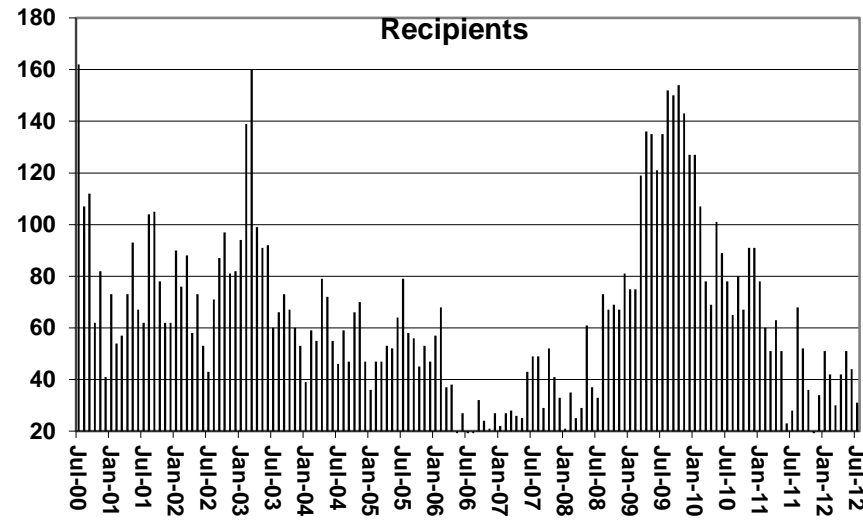
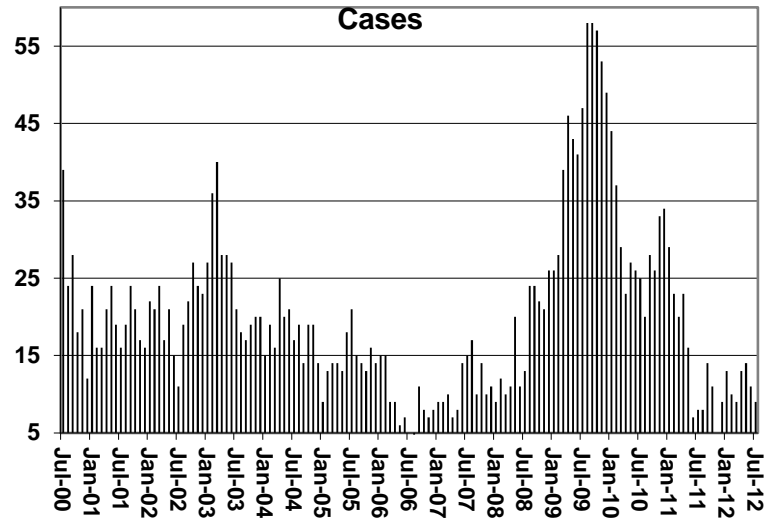


TABLE 4
TUBERCULOSIS CONTROL: ARIZONA 1/

	JULY 2012					CHANGE FROM			JULY 2011		
	NUMBER OF CASES	PERSONS (RECIP.)	TOTAL PAYMENTS	AVERAGE PAYMENT/ CASE	AVERAGE PAYMENT/ RECIP.	NUMBER OF CASES	PERSONS (RECIP.)	TOTAL PAYMENTS	NUMBER OF CASES	PERSONS (RECIP.)	TOTAL PAYMENTS
ARIZONA	2	2	346	173.00	173.00	(1)	(1)	(58)	(3)	(3)	(389)
REGION											
MARICOPA	2	2	346	173.00	173.00	0	0	0	(3)	(3)	(389)
NORTHERN	0	0	0	0.00	0.00	(1)	(1)	(58)	0	0	0
APACHE	0	0	0	0.00	0.00	0	0	0	0	0	0
COCONINO	0	0	0	0.00	0.00	0	0	0	0	0	0
MOHAVE	0	0	0	0.00	0.00	(1)	(1)	(58)	0	0	0
NAVAJO	0	0	0	0.00	0.00	0	0	0	0	0	0
CENTRAL	0	0	0	0.00	0.00	0	0	0	0	0	0
GILA	0	0	0	0.00	0.00	0	0	0	0	0	0
LA PAZ	0	0	0	0.00	0.00	0	0	0	0	0	0
PINAL	0	0	0	0.00	0.00	0	0	0	0	0	0
YAVAPAI	0	0	0	0.00	0.00	0	0	0	0	0	0
YUMA	0	0	0	0.00	0.00	0	0	0	0	0	0
SOUTHERN	0	0	0	0.00	0.00	0	0	0	0	0	0
COCHISE	0	0	0	0.00	0.00	0	0	0	0	0	0
GRAHAM	0	0	0	0.00	0.00	0	0	0	0	0	0
GREENLEE	0	0	0	0.00	0.00	0	0	0	0	0	0
PIMA	0	0	0	0.00	0.00	0	0	0	0	0	0
SANTA CRUZ	0	0	0	0.00	0.00	0	0	0	0	0	0

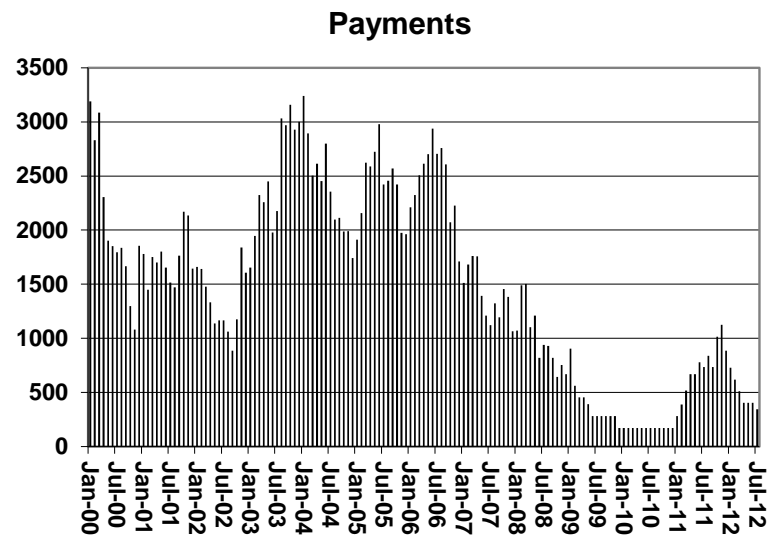
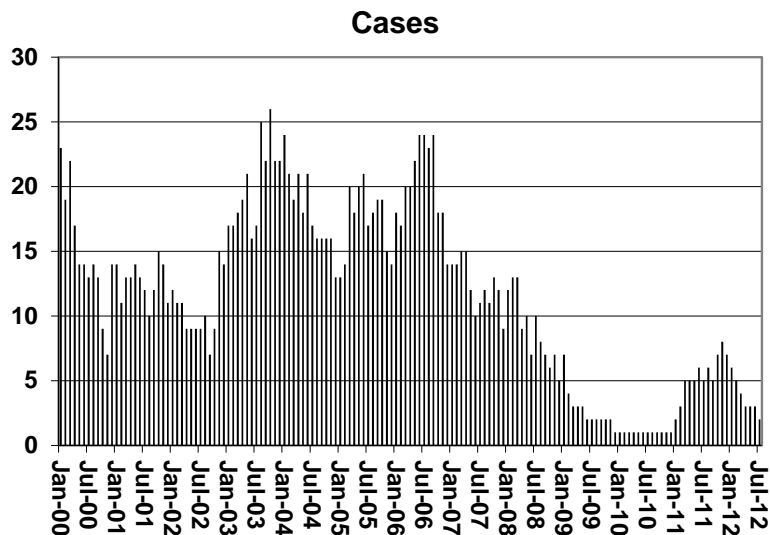
1/EXCLUDES: PRIOR MONTH NET TOTALS OF : 0 CASES; 0 RECIPIENTS; \$0.

CHART 4

TUBERCULOSIS CONTROL PROGRAM

COMPARISON OF CASES, PAYMENTS & AVERAGE PAYMENTS

FOR 2000, 2001, 2002, 2003, 2004, 2005, 2006, 2007, 2008, 2009, 2010, 2011, & 2012



Average Payment Per Case

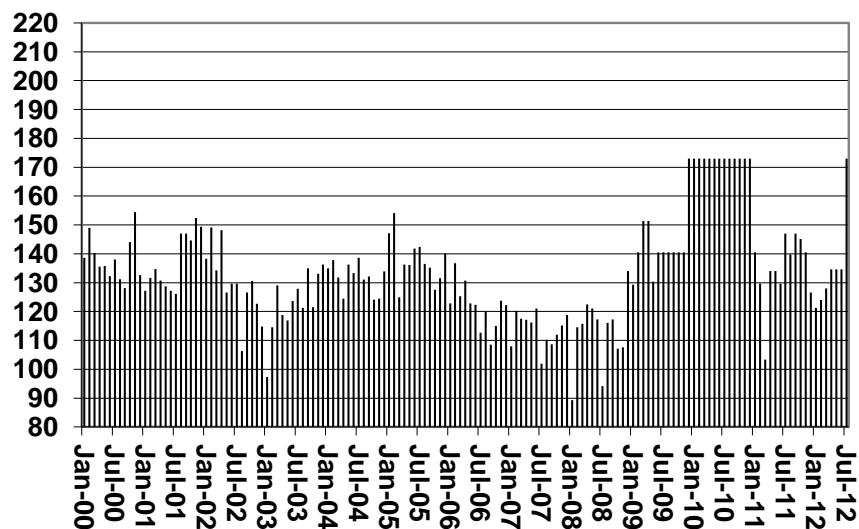


TABLE 6

SUPPLEMENTAL NUTRITION ASSISTANCE PROGRAM: ARIZONA 1/

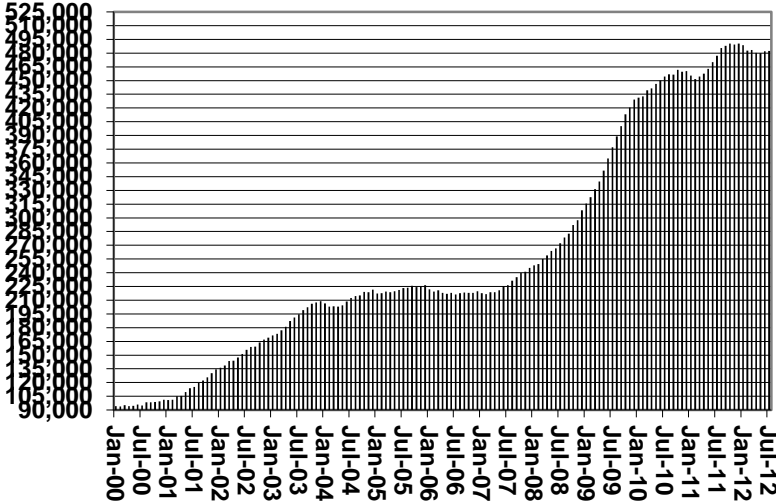
	CHANGE FROM												
	JULY 2012							JUNE 2012			JULY 2011		
	HOUSEHOLDS	PERSONS	ADULTS	CHILDREN	TOTAL PAYMENTS ISSUANCE	AVERAGE PAYMT./ HOUSEHOLD	AVERAGE PAYMT./ PERSON	HOUSEHOLDS	PERSONS	TOTAL PAYMENTS ISSUANCE	HOUSEHOLDS	PERSONS	TOTAL PAYMENTS ISSUANCE
ARIZONA	482,485	1,119,607	572,715	546,892	141,394,804	293.06	126.29	584	3,124	1,233,721	5,258	17,034	1,684,558
REGION													
MARICOPA	260,669	610,802	290,767	320,035	78,036,806	299.37	127.76	778	2,958	819,530	5,094	15,794	1,885,664
NORTHERN	56,111	134,155	76,153	58,002	16,773,562	298.94	125.03	(198)	(402)	34,831	1,574	1,432	282,996
APACHE	10,792	29,052	16,082	12,970	3,630,092	336.37	124.95	30	181	34,103	437	592	95,908
COCONINO	10,016	24,109	13,045	11,064	3,020,205	301.54	125.27	(130)	(281)	(26,947)	317	(34)	72,672
MOHAVE	21,265	45,104	27,154	17,950	5,638,173	265.14	125.00	(111)	(267)	2,323	405	544	43,264
NAVAJO	14,038	35,890	19,872	16,018	4,485,092	319.50	124.97	13	(35)	25,352	415	330	71,152
CENTRAL	64,436	153,885	83,440	70,445	18,837,254	292.34	122.41	230	813	233,317	1,008	2,983	344,074
GILA	6,098	13,466	7,769	5,697	1,751,965	287.30	130.10	(74)	(172)	(3,557)	(102)	(119)	799
LA PAZ	2,026	4,212	2,423	1,789	540,948	267.00	128.43	(41)	(35)	(634)	18	71	11,762
PINAL	23,480	58,849	30,308	28,541	7,322,071	311.84	124.42	145	442	97,369	454	1,664	137,693
YAVAPAI	15,789	31,783	19,156	12,627	3,900,358	247.03	122.72	(53)	(160)	5,433	430	640	65,605
YUMA	17,043	45,575	23,784	21,791	5,321,912	312.26	116.77	253	738	134,706	208	727	128,215
SOUTHERN	101,269	220,765	122,355	98,410	27,747,182	273.99	125.69	(226)	(245)	146,043	(2,418)	(3,175)	(828,176)
COCHISE	10,995	24,030	13,751	10,279	2,888,617	262.72	120.21	(40)	(74)	(6,911)	70	412	(1,952)
GRAHAM	3,395	7,866	4,336	3,530	970,913	285.98	123.43	(21)	(61)	825,148	(179)	(280)	(67,401)
GREENLEE	501	1,084	618	466	138,067	275.58	127.37	(28)	(64)	(838,403)	(4)	1	(5,256)
PIMA	81,564	174,961	96,999	77,962	22,228,439	272.53	127.05	(227)	(330)	106,002	(2,531)	(3,779)	(824,075)
SANTA CRUZ	4,814	12,824	6,651	6,173	1,521,146	315.98	118.62	90	284	60,207	226	471	70,508

1/EXCLUDES: PRIOR MONTH NET TOTALS OF : 7,159 CASES; 18,800 RECIPIENTS; \$1,125,421.
 AGED CANCELATIONS: 11,809 CASES; 14,890 RECIPIENTS; \$572,620.
 SNAP CONVERSIONS: 0 CASES; 0 RECIPIENTS; \$0.
 SNAP CHILD ONLY: 60,566 CASES; 144,321 RECIPIENTS; \$21,940,189.
 SNAP ZERO PAY: 5,476 CASES; 20,785 RECIPIENTS.

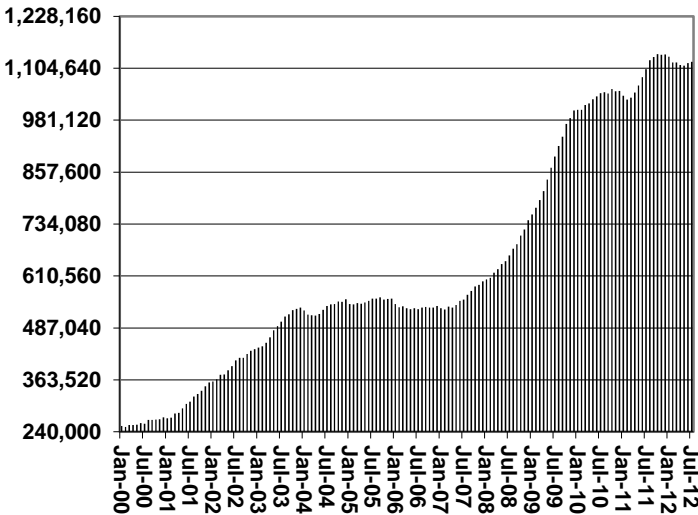
CHART 6

SUPPLEMENTAL NUTRITION ASSISTANCE PROGRAM (SNAP) COMPARISON OF HOUSEHOLDS, RECIPIENTS, PAYMENTS & AVERAGE PAYMENTS FOR 2000, 2001, 2002, 2003, 2004, 2005, 2006, 2007, 2008, 2009, 2010, 2011, & 2012

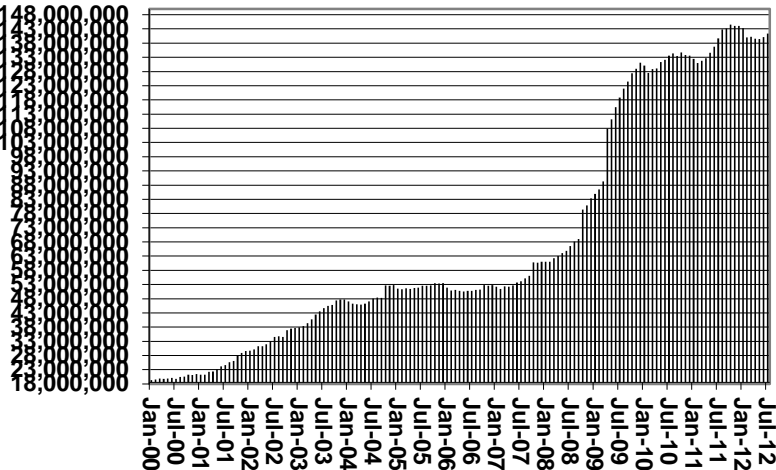
Households



Recipients



Payments



Average Payment Per Household

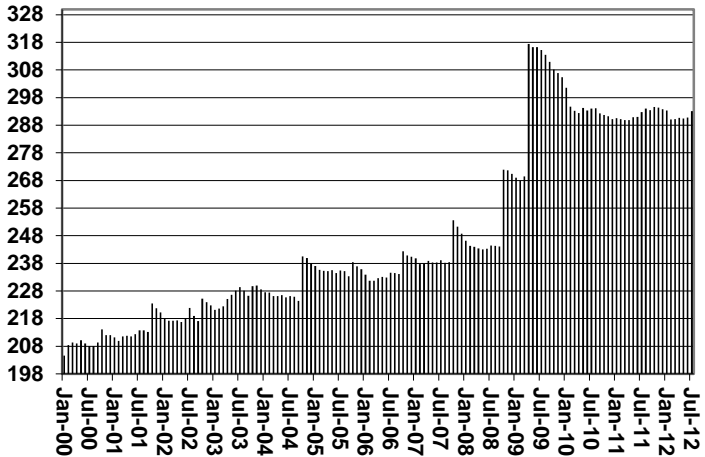


TABLE 7A
MEDICAL ASSISTANCE PROGRAM
RECIPIENTS
JULY 2012

	SOBRA WOMAN 133% FPL	SOBRA CHILD	ADULT W/O CHILD 100% FPL	FOSTER CARE	1931 36% FPL	FEDERAL EMERGENCY SERVICES	INFANTS	ADULT W/O CHILD 40% FPL	MEDICAL W/SPEND DOWN	SOBRA WOMAN 100% FPL	SOBRA CHILD 100% FPL	TRANSITIONAL MEDICAL T1 - T4	1931 100% FPL	YATI	OTHER	TOTAL CASES
ARIZONA	12,720	56,557	26,043	14,797	373,480	66,570	45,769	83,849	0	4,709	242,918	45,787	122,181	343	28,269	1,123,992
REGION																
MARICOPA	7,210	32,514	12,755	8,317	209,790	54,487	28,015	40,971	0	2,594	146,162	24,453	64,055	185	14,842	646,350
NORTHERN	1,323	5,567	3,006	701	47,850	1,109	4,354	13,576	0	519	22,857	5,186	14,068	19	2,884	123,019
APACHE	213	1,216	418	44	12,097	83	860	3,382	0	85	3,989	818	2,474	1	411	26,091
COCONINO	306	998	539	134	8,897	439	974	2,161	0	119	4,663	1,174	2,763	9	419	23,595
MOHAVE	464	1,781	1,368	362	12,778	370	1,328	4,129	0	165	8,555	1,839	5,145	7	1,546	39,837
NAVAJO	340	1,572	681	161	14,078	217	1,192	3,904	0	150	5,650	1,355	3,686	2	508	33,496
CENTRAL	1,909	7,822	3,809	1,685	49,035	4,067	5,814	11,032	0	743	30,601	6,731	18,605	46	4,281	146,180
GILA	143	503	336	112	4,888	109	462	1,456	0	52	1,966	496	1,262	3	330	12,118
LA PAZ	46	212	126	29	1,445	115	143	392	0	23	687	100	360	0	165	3,843
PINAL	677	3,352	1,101	642	21,137	1,320	2,214	4,244	0	272	11,248	2,461	6,331	15	1,337	56,351
YAVAPAI	456	1,544	1,172	574	8,266	1,186	1,067	2,448	0	137	6,370	1,547	3,829	23	1,149	29,768
YUMA	587	2,211	1,074	328	13,299	1,337	1,928	2,492	0	259	10,330	2,127	6,823	5	1,300	44,100
SOUTHERN	2,278	10,654	6,473	4,094	66,805	6,907	7,586	18,270	0	853	43,298	9,417	25,453	93	6,262	208,443
COCHISE	216	1,009	843	257	7,153	426	737	1,794	0	76	4,499	950	2,815	6	868	21,649
GRAHAM	103	376	204	86	2,757	29	313	728	0	39	1,326	463	819	1	162	7,406
GREENLEE	13	55	37	10	477	4	57	122	0	4	178	39	74	1	30	1,101
PIMA	1,822	8,657	4,932	3,701	52,734	6,037	6,055	14,812	0	680	34,271	7,362	19,786	85	4,723	165,657
SANTA CRUZ	124	557	457	40	3,684	411	424	814	0	54	3,024	603	1,959	0	479	12,630

TABLE 7B
MEDICAL ASSISTANCE PROGRAM
RECIPIENTS

CHANGE FROM

JUNE 2012

	SOBRA WOMAN 133% FPL	SOBRA CHILD	ADULT W/O CHILD 100% FPL	FOSTER CARE	1931 36% FPL	FEDERAL EMERGENCY SERVICES	ADULT W/O CHILD 40% FPL	MEDICAL W/SPEND DOWN	SOBRA WOMAN 100% FPL	SOBRA CHILD 100% FPL	TRANSITIONAL MEDICAL T1 - T4	1931 100% FPL	YATI	OTHER	TOTAL CASES	
ARIZONA	469	940	(1,982)	75	4,621	1,212	166	(4,565)	0	119	598	(1,214)	61	(15)	(95)	390
REGION																
MARICOPA	234	583	(1,024)	41	2,505	1,159	215	(2,482)	0	74	686	(708)	(18)	(14)	41	1,292
NORTHERN	37	99	(226)	12	505	(21)	(70)	(712)	0	24	(283)	(46)	(193)	(1)	(48)	(923)
APACHE	1	24	(39)	1	93	6	8	(166)	0	19	(79)	(76)	(24)	0	(1)	(233)
COCONINO	8	42	(33)	10	(22)	(21)	(38)	(141)	0	0	(37)	(43)	(29)	(1)	(17)	(322)
MOHAVE	17	26	(94)	5	205	(7)	(37)	(212)	0	(9)	(162)	68	(123)	0	(34)	(357)
NAVAJO	11	7	(60)	(4)	229	1	(3)	(193)	0	14	(5)	5	(17)	0	4	(11)
CENTRAL	93	84	(276)	15	935	(4)	41	(545)	0	(3)	10	(261)	193	5	(55)	232
GILA	10	7	(15)	0	42	1	3	(56)	0	(2)	(30)	(10)	(32)	1	(18)	(99)
LA PAZ	2	2	(4)	3	65	4	(5)	(29)	0	0	(45)	6	(3)	0	6	2
PINAL	40	94	(68)	2	563	10	15	(201)	0	(8)	(21)	(35)	74	2	(7)	460
YAVAPAI	27	(4)	(85)	5	91	(36)	24	(129)	0	(1)	(67)	(1)	(39)	1	(8)	(222)
YUMA	14	(15)	(104)	5	174	17	4	(130)	0	8	173	(221)	193	1	(28)	91
SOUTHERN	105	174	(456)	7	676	78	(20)	(826)	0	24	185	(199)	79	(5)	(33)	(211)
COCHISE	8	(1)	(46)	1	132	5	4	(66)	0	0	47	(8)	2	(2)	(3)	73
GRAHAM	9	(7)	(28)	(1)	(12)	0	(17)	(36)	0	(1)	(46)	17	(5)	0	(2)	(129)
GREENLEE	1	(1)	(1)	0	(11)	0	3	(4)	0	1	(8)	(2)	(11)	0	(2)	(35)
PIMA	83	168	(367)	8	483	51	(29)	(705)	0	22	173	(122)	37	(3)	(42)	(243)
SANTA CRUZ	4	15	(14)	(1)	84	22	19	(15)	0	2	19	(84)	56	0	16	123

TABLE 7C
MEDICAL ASSISTANCE PROGRAM
RECIPIENTS

CHANGE FROM

JULY 2011

	SOBRA WOMAN 133% FPL	SOBRA CHILD	ADULT W/O CHILD 100% FPL	FOSTER CARE	1931 36% FPL	FEDERAL EMERGENCY SERVICES	INFANTS	ADULT W/O CHILD 40% FPL	MEDICAL W/SPEND DOWN	SOBRA WOMAN 100% FPL	SOBRA CHILD 100% FPL	TRANSITIONAL MEDICAL T1 - T4	3E 1931 100% FPL	YATI	OTHER	TOTAL CASES
ARIZONA	1,422	(13,622)	(37,883)	1,621	18,164	13,470	9	(91,566)	(3,518)	528	4,340	3,292	(5,141)	3	(1,555)	(110,436)
REGION																
MARICOPA	909	(7,451)	(18,675)	1,150	10,569	12,648	886	(48,513)	(1,868)	318	5,524	2,266	(1,977)	(4)	(716)	(44,934)
NORTHERN	46	(2,079)	(4,589)	16	2,822	116	(314)	(12,442)	(557)	(20)	(773)	362	(997)	5	(219)	(18,623)
APACHE	5	(316)	(669)	9	382	8	(25)	(2,633)	(123)	(28)	(250)	(103)	(225)	1	(22)	(3,989)
COCONINO	14	(493)	(1,002)	(5)	445	73	(105)	(2,514)	(86)	10	(211)	173	(295)	(2)	(49)	(4,047)
MOHAVE	15	(462)	(1,753)	(1)	970	14	(110)	(3,968)	(250)	(31)	(159)	123	(273)	5	(73)	(5,953)
NAVAJO	12	(808)	(1,165)	13	1,025	21	(74)	(3,327)	(98)	29	(153)	169	(204)	1	(75)	(4,634)
CENTRAL	248	(1,537)	(5,965)	135	3,347	335	(176)	(11,399)	(429)	163	(28)	206	(920)	8	(213)	(16,225)
GILA	48	(146)	(424)	12	73	7	(18)	(1,159)	(56)	17	62	40	(72)	0	(18)	(1,634)
LA PAZ	15	(41)	(132)	10	78	(18)	(4)	(390)	(5)	12	42	(19)	(16)	0	(6)	(474)
PINAL	116	(751)	(1,833)	22	1,742	136	(88)	(4,630)	(113)	63	74	240	(177)	0	(30)	(5,229)
YAVAPAI	43	(166)	(1,584)	64	382	133	(86)	(2,729)	(137)	20	99	(136)	(307)	6	(93)	(4,491)
YUMA	26	(433)	(1,992)	27	1,072	77	20	(2,491)	(118)	51	(305)	81	(348)	2	(66)	(4,397)
SOUTHERN	219	(2,555)	(8,654)	320	1,426	371	(387)	(19,212)	(664)	67	(383)	458	(1,247)	(6)	(407)	(30,654)
COCHISE	(1)	(287)	(993)	10	206	20	(51)	(1,528)	(92)	(22)	2	85	(1)	1	(57)	(2,708)
GRAHAM	(12)	(97)	(276)	14	(87)	8	(44)	(774)	(35)	15	(73)	112	(76)	0	(20)	(1,345)
GREENLEE	1	(1)	(29)	2	42	2	3	(113)	(10)	(4)	(72)	10	(26)	1	(5)	(199)
PIMA	215	(2,035)	(6,916)	288	1,037	336	(279)	(16,407)	(506)	68	(151)	223	(1,074)	(8)	(305)	(25,514)
SANTA CRUZ	16	(135)	(440)	6	228	5	(16)	(390)	(21)	10	(89)	28	(70)	0	(20)	(888)

CHART 7

MEDICAL ASSISTANCE PROGRAM

COMPARISON OF RECIPIENTS

FOR 2000, 2001, 2002, 2003, 2004, 2005, 2006, 2007, 2008, 2009, 2010, 2011, & 2012

Total Recipients

