



DEPARTMENT OF ECONOMIC SECURITY

Your Partner For A Stronger Arizona

State of Arizona

Department of Economic Security

Family Assistance Administration

Statistical Bulletin

January, 2011

Phone: (602) 542-3678

<https://www.azdes.gov/appreports.aspx>

**** STATISTICAL BULLETIN ****
ARIZONA DEPARTMENT OF ECONOMIC SECURITY
FAMILY ASSISTANCE ADMINISTRATION
BOX 6123, PHOENIX, ARIZONA 85005
PHONE (602) 542-3678

JANUARY 2011

THIS ISSUE OF THE STATISTICAL BULLETIN COMPARES JANUARY 2011 DATA FOR EACH OF THE INDICATED PROGRAMS WITH THE INFORMATION FOR DECEMBER 2010 AND JANUARY 2010. STATEWIDE SUMMARIES OF ACTIVITY WITHIN EACH OF THE SPECIFIC PROGRAMS FOR THIS REPORT PERIOD ARE DISCUSSED BELOW. THE TABLES COMPARE CURRENT AND PRIOR MONTH DATA. DISTRICT AND COUNTY COMPARISONS ARE PROVIDED WITHIN THIS BULLETIN

TANF SUMMARY

COMPARING TO DECEMBER 2010, JANUARY 2011 CASES DECREASED BY 494 (2.50%) TO 19,296. RECIPIENTS DECREASED BY 1,217 (2.70%) TO 43,800. PAYMENTS DECREASED BY \$120,664 (2.86%) TO \$4,096,446. AVERAGE PAYMENT PER CASE DECREASED BY \$0.79 (0.37%) TO \$0.00. PAYMENT PER RECIPIENT DECREASED BY \$0.15 (0.16%) TO \$93.53.

COMPARING TO JANUARY 2010, JANUARY 2011 CASES DECREASED BY 19,143 (49.80%). RECIPIENTS DECREASED BY 39,984 (47.72%). TOTAL PAYMENTS DECREASED BY \$4,077,004 (49.88%). THE AVERAGE PAYMENT PER CASE DECREASED BY \$0.33 (0.16%). THE AVERAGE PAYMENT PER RECIPIENT DECREASED BY \$4.02 (4.12%).

CASH ASSISTANCE (CA)

COMPARING TO DECEMBER 2010, JANUARY 2011 CASES DECREASED BY 463 (2.48%) TO 18,214. RECIPIENTS DECREASED BY 1,061 (2.54%) TO 40,656. PAYMENTS DECREASED BY \$111,274 (2.77%) TO \$3,899,804. AVERAGE PAYMENT PER CASE DECREASED BY \$0.65 (0.30%) TO \$214.11. PAYMENT PER RECIPIENT DECREASED BY \$0.23 (0.24%) TO \$95.92.

COMPARING TO JANUARY 2010, JANUARY 2011 CASES DECREASED BY 18,049 (49.77%). RECIPIENTS DECREASED BY 36,952 (47.61%). TOTAL PAYMENTS DECREASED BY \$3,870,693 (49.81%). THE AVERAGE PAYMENT PER CASE DECREASED BY \$0.17 (0.08%). THE AVERAGE PAYMENT PER RECIPIENT DECREASED BY \$4.20 (4.19%).

CASH ASSISTANCE UNEMPLOYED PARENT PROGRAM (CA-UP)

COMPARING TO DECEMBER 2010, JANUARY 2011 CASES DECREASED BY 20 (3.36%) TO 575. RECIPIENTS DECREASED BY 121 (5.49%) TO 2,082. PAYMENTS DECREASED BY \$7,252 (4.33%) TO \$160,386. AVERAGE PAYMENT PER CASE DECREASED BY \$2.81 (1.00%) TO \$278.93. PAYMENT PER RECIPIENT INCREASED BY \$0.93 (1.23%) TO \$77.03.

COMPARING TO JANUARY 2010, JANUARY 2011 CASES DECREASED BY 656 (53.29%). RECIPIENTS DECREASED BY 2,162 (50.94%). TOTAL PAYMENTS DECREASED BY \$178,064 (52.61%). THE AVERAGE PAYMENT PER CASE INCREASED BY \$4.00 (1.45%). THE AVERAGE PAYMENT PER RECIPIENT DECREASED BY \$2.72 (3.41%).

CASH ASSISTANCE WITH GRANT UNDER \$100 (CA-MOE)

COMPARING TO DECEMBER 2010, JANUARY 2011 CASES DECREASED BY 6 (1.24%) TO 478. RECIPIENTS DECREASED BY 22 (2.19%) TO 984. PAYMENTS DECREASED BY \$1,872 (5.14%) TO \$34,518. AVERAGE PAYMENT PER CASE DECREASED BY \$2.98 (3.96%) TO \$72.21. AVERAGE PAYMENT PER RECIPIENT DECREASED BY \$1.09 (3.01%) TO \$35.08.

COMPARING TO JANUARY 2010, JANUARY 2011 CASES DECREASED BY 423 (46.95%). RECIPIENTS DECREASED BY 821 (45.48%). TOTAL PAYMENTS DECREASED BY \$27,505 (44.35%). THE AVERAGE PAYMENT PER CASE INCREASED BY \$3.37 (4.90%). THE AVERAGE PAYMENT PER RECIPIENT INCREASED BY \$0.72 (2.10%).

CASH ASSISTANCE UNEMPLOYED PARENT PROGRAM WITH GRANT UNDER \$100 (CA-UP-MOE) NEW PROGRAM STARTING 7/01

COMPARING TO DECEMBER 2010, JANUARY 2011 CASES DECREASED BY 5 (14.71%) TO 29. RECIPIENTS DECREASED BY 13 (14.29%) TO 78. PAYMENTS DECREASED BY \$266 (13.27%) TO \$1,738. AVERAGE PAYMENT PER CASE INCREASED BY \$0.99 (1.68%) TO \$59.93. PAYMENT PER RECIPIENT INCREASED BY \$0.26 (1.18%) TO \$22.28.

COMPARING TO JANUARY 2010, JANUARY 2011 CASES DECREASED BY 15 (34.09%). RECIPIENTS DECREASED BY 49 (2.45%). TOTAL PAYMENTS DECREASED BY \$742 (29.92%). THE AVERAGE PAYMENT PER CASE INCREASED BY \$3.57 (6.33%). THE AVERAGE PAYMENT PER RECIPIENT INCREASED BY \$2.75 (14.08%).

TUBERCULOSIS CONTROL PROGRAM (TC)

COMPARING TO DECEMBER 2010, JANUARY 2011 CASES INCREASED BY 1 (100.00%) TO 2. RECIPIENTS INCREASED BY 1 (100.00%) TO 2. PAYMENTS INCREASED BY \$108 (62.43%) TO \$281. AVERAGE PAYMENT PER CASE INCREASED BY \$39.30 (22.72%) TO \$212.30. AVERAGE PAYMENT PER RECIPIENT DECREASED BY \$32.50 (18.79%) TO \$140.50.

COMPARING TO JANUARY 2010, JANUARY 2011 CASES INCREASED BY 1 (100.00%). RECIPIENTS INCREASED BY 1 (100.00%). TOTAL PAYMENTS INCREASED BY \$108 (62.43%). THE AVERAGE PAYMENT PER CASE INCREASED BY \$39.30 (22.72%). THE AVERAGE PAYMENT PER RECIPIENT DECREASED BY \$32.50 (18.79%).

SUPPLEMENTAL NUTRITION ASSISTANCE PROGRAM (SNAP)

COMPARING TO DECEMBER 2010, JANUARY 2011 SUPPLEMENTAL NUTRITION ASSISTANCE HOUSEHOLDS DECREASED BY 4,727 (1.03%) TO 455,595. PERSONS RECEIVING SUPPLEMENTAL NUTRITION ASSISTANCE DECREASED BY 11,360 (1.08%) TO 1,039,326. TOTAL COUPON ISSUANCE DECREASED BY \$1,174,662 (0.88%) TO \$132,405,000. THE AVERAGE HOUSEHOLD ALLOTMENT INCREASED BY \$0.43 (0.15%) TO \$290.62. THE AVERAGE ALLOTMENT PER PERSON INCREASED BY \$0.26 (0.21%) TO \$127.40.

COMPARING TO JANUARY 2010, JANUARY 2011 SUPPLEMENTAL NUTRITION ASSISTANCE HOUSEHOLDS INCREASED BY 24,114 (5.59%). PERSONS RECEIVING SUPPLEMENTAL NUTRITION ASSISTANCE INCREASED BY 33,516 (3.33%). TOTAL COUPON ISSUANCE INCREASED BY \$2,295,729 (1.76%). THE AVERAGE ALLOTMENT PER HOUSEHOLD DECREASED BY \$10.92 (3.62%). THE AVERAGE ALLOTMENT PER PERSON DECREASED BY \$1.96 (1.51%).

MEDICAL ASSISTANCE PROGRAM (MA) NEW TABLE INCLUDES PROP. 204 CATEGORIES

COMPARING TO JANUARY 2010, FEBRUARY 2010 TOTAL RECIPIENTS TOTAL RECIPIENTS DECREASED BY 6,946 (0.59%). SOBRA WOMEN AT 140% FPL DECREASED BY 248 (2.41%). SOBRA CHILDREN DECREASED BY 812 (1.23%). ADULTS W/O CHILD AT 100% INCREASED BY 446 (0.76%). FOSTER CARE INCREASED BY 69 (0.59%). 1931 AT 36% FPL DECREASED BY 4,919 (1.48%). EMERGENCY SERVICES DECREASED BY 5,083 (6.43%). INFANTS DECREASED BY 513 (1.02%). ADULT W/O CHILD AT 140% INCREASED BY 510 (0.33%). MEDICAL W/SPEND DOWN DECREASED BY 201 (3.10%). SOBRA WOMAN AT 100% INCREASED BY 99 (2.63%). SOBRA CHILD AT 100% INCREASED BY 902 (0.40%). TRANSITIONAL MEDICAL INCREASED BY 1,305 (3.04%). 1931 AT 100% INCREASED BY 1,355 (1.16%). YATI INCREASED BY 10 (3.02%). ALL OTHER CATEGORIES INCREASED BY 134 (0.51%).

COMPARING TO JANUARY 2010, JANUARY 2011 TOTAL RECIPIENTS TOTAL RECIPIENTS INCREASED BY 17,843 (1.50%). SOBRA WOMEN AT 140% FPL INCREASED BY 326 (3.17%). SOBRA CHILDREN INCREASED BY 4,518 (6.85%). ADULTS W/O CHILD AT 100% INCREASED BY 5,329 (9.09%). FOSTER CARE INCREASED BY 787 (6.68%). 1931 AT 36% FPL INCREASED BY 3,830 (1.15%). EMERGENCY SERVICES DECREASED BY 28,607 (36.22%). INFANTS DECREASED BY 4,114 (8.14%). ADULT W/O CHILD AT 140% INCREASED BY 17,592 (11.28%). MEDICAL W/SPEND DOWN INCREASED BY 595 (9.18%). SOBRA WOMAN AT 100% DECREASED BY 98 (2.60%). SOBRA CHILD AT 100% INCREASED BY 4,049 (1.80%). TRANSITIONAL MEDICAL INCREASED BY 3,041 (7.09%). 1931 AT 100% INCREASED BY 8,377 (7.15%). YATI INCREASED BY 11 (3.32%). ALL OTHER CATEGORIES INCREASED BY 2,207 (8.37%).

TANF SUMMARY

TABLES 1, 1A, 1B, & 1C: ARIZONA 1/

	JANUARY 2011							CHANGE FROM			DECEMBER 2010			JANUARY 2010		
	FAMILIES (CASES)	PERSONS (RECIP.)	ADULTS	CHILDREN	TOTAL PAYMENTS	AVERAGE	AVERAGE	FAMILIES (CASES)	PERSONS (RECIP.)	TOTAL PAYMENTS	FAMILIES (CASES)	PERSONS (RECIP.)	TOTAL PAYMENTS			
						PAYMENT/ CASE	PAYMENT/ RECIP.									
ARIZONA	19,296	43,800	11,866	31,934	4,096,446	212.30	93.53	(494)	(1,217)	(120,664)	(19,143)	(39,984)	(4,077,004)			
REGION																
MARICOPA	11,936	27,746	7,406	20,340	2,541,170	212.90	91.59	(351)	(885)	(85,676)	(11,691)	(24,541)	(2,435,762)			
NORTHERN	1,050	2,317	640	1,677	217,660	207.30	93.94	(27)	(51)	(5,374)	(1,848)	(4,511)	(483,051)			
APACHE	36	71	14	57	6,852	190.33	96.51	(4)	(12)	(967)	35	67	6,517			
COCONINO	79	183	47	136	17,076	216.15	93.31	(4)	(14)	(521)	(144)	(298)	(28,881)			
MOHAVE	606	1,269	354	915	123,811	204.31	97.57	(15)	(34)	(3,659)	(564)	(1,131)	(115,914)			
NAVAJO	329	794	225	569	69,921	212.53	88.06	(4)	9	(227)	(1,175)	(3,149)	(344,773)			
CENTRAL	2,232	4,890	1,343	3,547	478,159	214.23	97.78	(67)	(190)	(16,720)	(2,085)	(4,335)	(435,742)			
GILA	495	1,085	407	678	121,797	246.05	112.26	(19)	(59)	(7,217)	(238)	(484)	(58,024)			
LA PAZ	77	171	43	128	14,736	191.38	86.18	(11)	(30)	(3,313)	(92)	(183)	(18,935)			
PINAL	915	2,013	500	1,513	186,653	203.99	92.72	(8)	(49)	(2,361)	(925)	(2,017)	(195,714)			
YAVAPAI	278	553	126	427	55,105	198.22	99.65	(7)	(3)	(1,096)	(391)	(749)	(74,503)			
YUMA	467	1,068	267	801	99,868	213.85	93.51	(22)	(49)	(2,733)	(439)	(902)	(88,566)			
SOUTHERN	4,078	8,847	2,477	6,370	859,457	210.75	97.15	(49)	(91)	(12,894)	(3,519)	(6,597)	(722,449)			
COCHISE	345	679	157	522	69,812	202.35	102.82	(1)	(6)	(1,148)	(427)	(821)	(87,718)			
GRAHAM	229	449	150	299	52,760	230.39	117.51	(2)	(1)	(459)	(38)	(54)	(6,736)			
GREENLEE	17	39	12	27	3,687	216.88	94.54	1	1	457	(12)	(20)	(2,581)			
PIMA	3,379	7,459	2,116	5,343	711,907	210.69	95.44	(43)	(71)	(10,503)	(2,905)	(5,410)	(595,899)			
SANTA CRUZ	108	221	42	179	21,291	197.14	96.34	(4)	(14)	(1,241)	(137)	(292)	(29,515)			

1/EXCLUDES: PRIOR MONTH NET TOTALS OF 1,034 CASES; 2,573 RECIPIENTS; \$216,691.
 GRANT DIVERSION TOTALS OF: 1,581 CASES; \$1,209,626.
 ZERO PAY TOTALS OF 3,509 CASES; 10,351 RECIPIENTS.
 RRP: 280 CASES; 433 RECIPIENTS; \$55,500.

1/INCLUDES: TANF CHILD ONLY: 8,007 CASES; 13,574 RECIPIENTS; \$1,517,048.

	CURRENT MO. CASES	CURRENT MO. RECIP.	CURRENT MO. DOLLARS	PRIOR MO. CASES	PRIOR MO. RECIP.	PRIOR MO. DOLLARS
PASQUA/YAQUI	251	729	\$76,077	14	53	\$4,725
WM APACHE	0	0	\$0	0	0	\$0
SALT RIVER	95	303	\$27,076	4	13	\$591
SAN CARLOS	508	1,115	\$128,966	19	46	\$3,424
HOPÍ	125	367	\$29,467	3	10	\$475
TOTAL	979	2,514	\$261,586	40	122	\$9,215

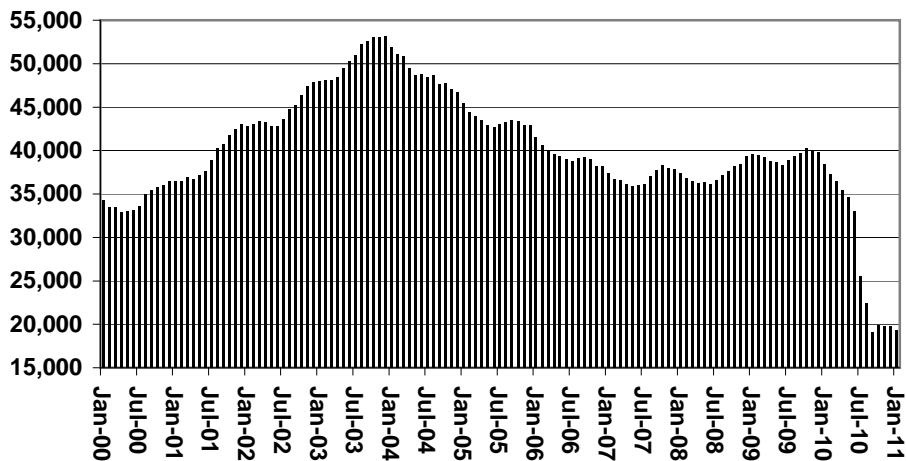
TANF SUMMARY

TABLES 1, 1A, 1B, & 1C

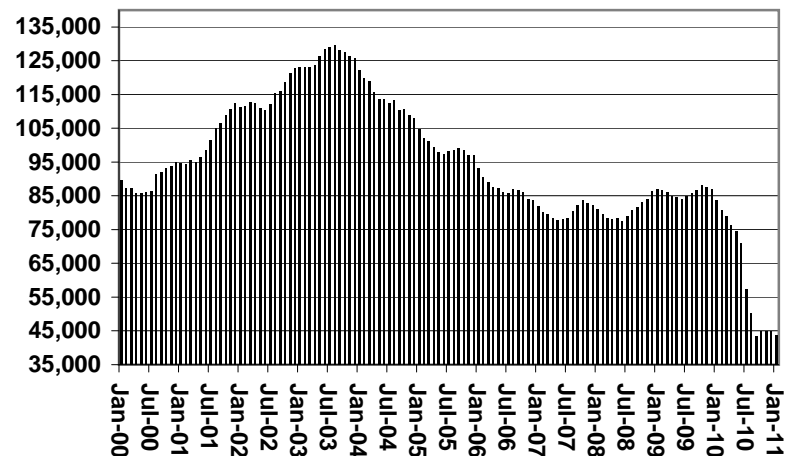
COMPARISON OF CASES, RECIPIENTS, PAYMENTS & AVERAGE PAYMENTS

FOR 2000, 2001, 2002, 2003, 2004, 2005, 2006, 2007, 2008, 2009, 2010, & 2011

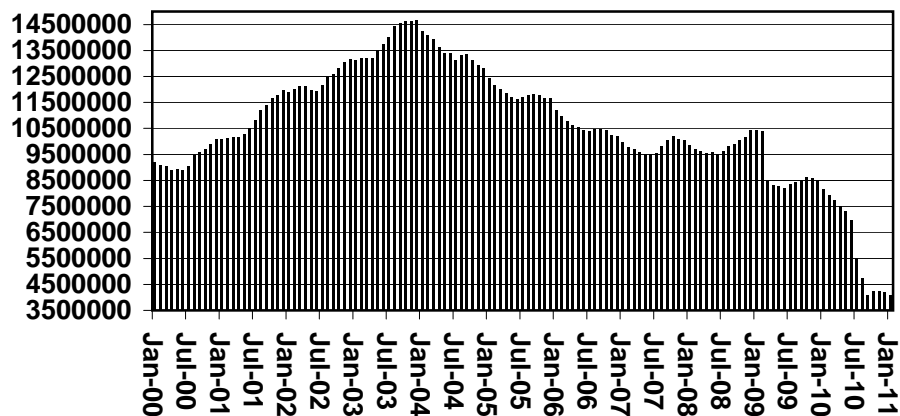
Cases



Recipients



Payments



Average Payments Per Recipient

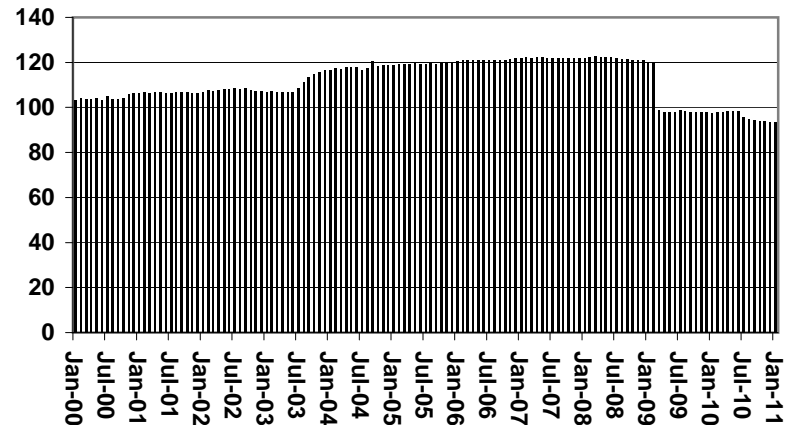


TABLE 1
CASH ASSISTANCE: ARIZONA 1/

	JANUARY 2011							CHANGE FROM			DECEMBER 2010			JANUARY 2010		
	FAMILIES (CASES)	(RECIP.)	ADULTS	CHILDREN	TOTAL PAYMENTS	AVERAGE PAYMENT/ CASE	AVERAGE PAYMENT/ RECIP.	FAMILIES (CASES)	PERSONS (RECIP.)	TOTAL PAYMENTS	FAMILIES (CASES)	PERSONS (RECIP.)	TOTAL PAYMENTS	FAMILIES (CASES)	PERSONS (RECIP.)	TOTAL PAYMENTS
	ARIZONA	18,214	40,656	10,751	29,905	3,899,804	214.11	95.92	(463)	(1,061)	(111,274)	(18,049)	(36,952)	(3,870,693)		
REGION																
MARICOPA	11,251	25,711	6,747	18,964	2,412,712	214.44	93.84	(301)	(671)	(71,779)	(10,898)	(22,415)	(2,291,118)			
NORTHERN	1,001	2,178	579	1,599	209,462	209.25	96.17	(19)	(42)	(5,113)	(1,800)	(4,364)	(474,041)			
APACHE	35	66	13	53	6,721	192.03	101.83	(3)	(12)	(751)	34	62	6,386			
COCONINO	75	174	44	130	16,428	219.04	94.41	(2)	(7)	(292)	(143)	(294)	(28,878)			
MOHAVE	566	1,155	303	852	116,892	206.52	101.21	(19)	(50)	(4,705)	(549)	(1,089)	(113,774)			
NAVAJO	325	783	219	564	69,421	213.60	88.66	5	27	635	(1,142)	(3,043)	(337,775)			
CENTRAL	2,132	4,614	1,243	3,371	461,462	216.45	100.01	(38)	(127)	(12,230)	(1,197)	(2,537)	(262,698)			
GILA	491	1,074	405	669	121,321	247.09	112.96	(20)	(59)	(7,069)	(225)	(457)	(56,339)			
LA PAZ	67	137	32	105	13,061	194.94	95.34	(13)	(39)	(3,528)	(96)	(203)	(20,032)			
PINAL	864	1,873	450	1,423	177,412	205.34	94.72	(5)	(29)	(1,633)	(876)	(1,877)	(186,327)			
YAVAPAI	260	508	110	398	52,503	201.93	103.35	(13)	(24)	(2,290)	(374)	(709)	(72,451)			
YUMA	450	1,022	246	776	97,165	215.92	95.07	(18)	(46)	(2,819)	(413)	(809)	(83,678)			
SOUTHERN	3,830	8,153	2,182	5,971	816,168	213.10	100.11	(74)	(151)	(17,043)	(3,367)	(6,118)	(686,707)			
COCHISE	331	644	146	498	68,076	205.67	105.71	(3)	(9)	(823)	(409)	(786)	(85,205)			
GRAHAM	226	440	146	294	52,236	231.13	118.72	(2)	(2)	(523)	(33)	(45)	(5,846)			
GREENLEE	16	37	11	26	3,561	222.56	96.24	3	5	589	(12)	(18)	(2,372)			
PIMA	3,154	6,824	1,838	4,986	671,490	212.90	98.40	(69)	(136)	(15,080)	(2,780)	(4,992)	(564,446)			
SANTA CRUZ	103	208	41	167	20,805	201.99	100.02	(3)	(9)	(1,206)	(133)	(277)	(28,838)			

1/EXCLUDES: PRIOR MONTH NET TOTALS OF: 589 CASES; 1,485 RECIPIENTS; \$168,673.
GRANT DIVERSION TOTALS OF: 1,581 CASES; \$1,209,626.
ZERO PAY TOTALS OF 3,495 CASES; 10,289 RECIPIENTS.

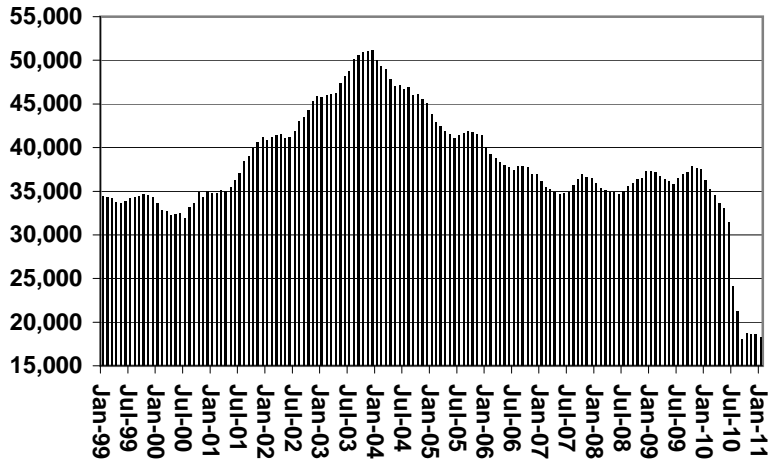
	CURRENT MO. CASES	CURRENT MO. RECIP.	CURRENT MO. DOLLARS	PRIOR MO. CASES	PRIOR MO. RECIP.	PRIOR MO. DOLLARS
PASQUA/YAQUI	245	703	\$74,073	14	53	\$4,725
WM APACHE	0	0	\$0	0	0	\$0
SALT RIVER	95	303	\$27,076	4	13	\$591
SAN CARLOS	508	1,115	\$128,966	19	46	\$3,424
HOPI	125	367	\$29,467	3	10	\$475
TOTAL	973	2,488	\$259,582	40	122	\$9,215

CASES WITH GRANT UNDER \$100 (SEE TABLE 1B).

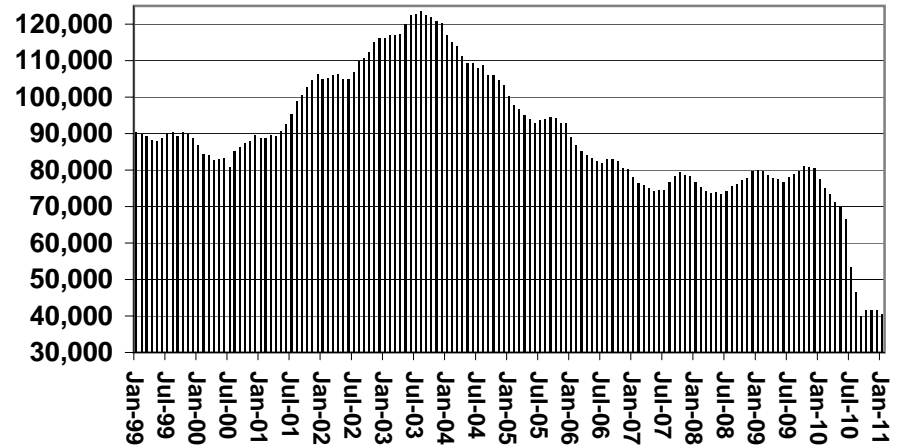
CHART 1

CASH ASSISTANCE PROGRAM COMPARISON OF CASES, RECIPIENTS, PAYMENTS & AVERAGE PAYMENTS FOR 1999, 2000, 2001, 2002, 2003, 2004, 2005, 2006, 2007, 2008, 2009, 2010, & 2011

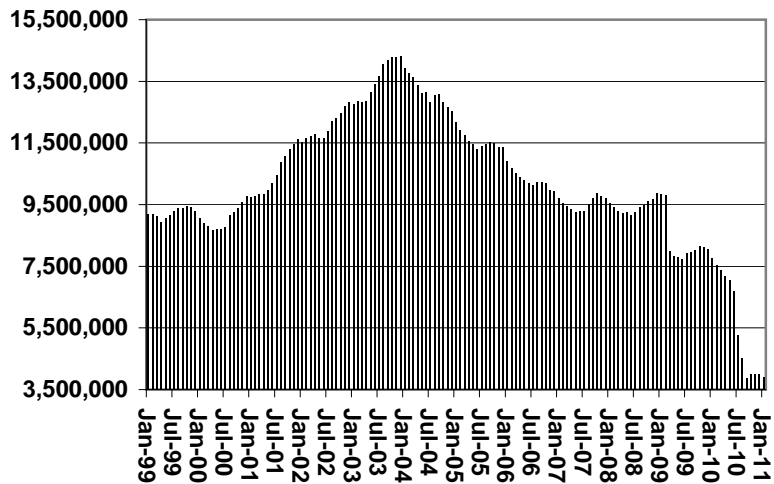
Cases



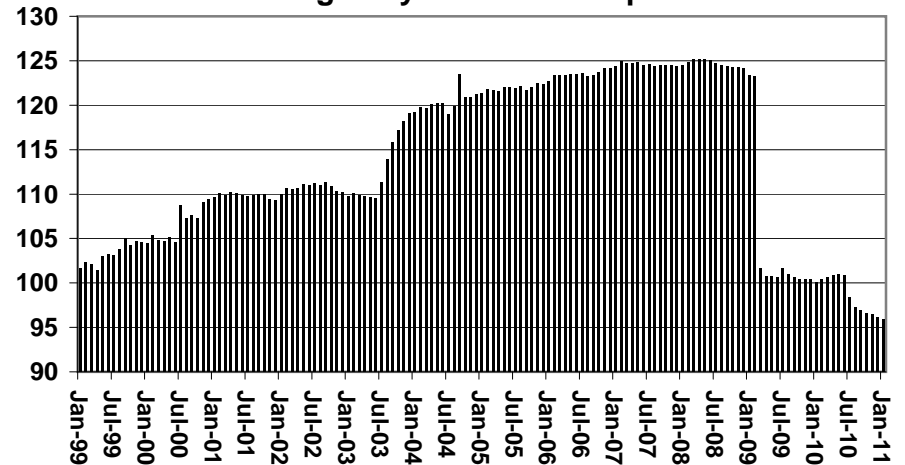
Recipients



Payments



Average Payment Per Recipient



**TABLE 1A
CA-UP**

CASH ASSISTANCE UNEMPLOYED PARENT PROGRAM: ARIZONA 1/

	JANUARY 2011							CHANGE FROM			DECEMBER 2010			JANUARY 2010		
	FAMILIES (CASES)	PERSONS (RECIP.)	ADULTS	CHILDREN	TOTAL PAYMENTS	AVERAGE PAYMENT/ CASE	AVERAGE PAYMENT/ RECIP.	FAMILIES (CASES)	PERSONS (RECIP.)	TOTAL PAYMENTS	FAMILIES (CASES)	PERSONS (RECIP.)	TOTAL PAYMENTS	FAMILIES (CASES)	PERSONS (RECIP.)	TOTAL PAYMENTS
	ARIZONA	575	2,082	849	1,233	160,386	278.93	77.03	(20)	(121)	(7,252)	(656)	(2,162)	(178,064)		
REGION																
MARICOPA	373	1,367	505	862	106,685	286.02	78.04	(38)	(164)	(12,186)	(497)	(1,527)	(125,804)			
NORTHERN	26	90	46	44	6,443	247.81	71.59	5	10	660	(18)	(81)	(7,258)			
APACHE	0	0	0	0	0	0.00	0.00	(1)	(3)	(278)	0	0	0			
COCONINO	1	4	2	2	335	335.00	83.75	0	0	0	0	0	0			
MOHAVE	23	80	40	40	5,773	251.00	72.16	7	18	1,200	1	(7)	(1,148)			
NAVAJO	2	6	4	2	335	167.50	55.83	(1)	(5)	(262)	(19)	(74)	(6,110)			
CENTRAL	47	171	73	98	12,692	270.04	74.22	(5)	(24)	(1,209)	(34)	(116)	(8,794)			
GILA	1	4	0	4	211	211.00	52.75	(1)	(4)	(292)	(6)	(19)	(1,368)			
LA PAZ	4	21	8	13	1,314	328.50	62.57	0	2	114	2	15	1,016			
PINAL	28	97	40	57	7,250	258.93	74.74	(4)	(22)	(1,031)	(30)	(112)	(8,442)			
YAVAPAI	6	20	9	11	1,759	293.17	87.95	3	11	925	(5)	(16)	(1,054)			
YUMA	8	29	16	13	2,158	269.75	74.41	1	8	522	(12)	(54)	(3,963)			
SOUTHERN	129	454	225	229	34,566	267.95	76.14	14	38	4,036	(90)	(368)	(31,191)			
COCHISE	4	15	5	10	1,030	257.50	68.67	(1)	(5)	(459)	(6)	(17)	(1,599)			
GRAHAM	1	5	2	3	392	0.00	0.00	0	0	0	(3)	(8)	(674)			
GREENLEE	0	0	0	0	0	0.00	0.00	0	0	0	(1)	(4)	(335)			
PIMA	123	433	218	215	33,002	268.31	76.22	14	42	4,353	(78)	(329)	(27,901)			
SANTA CRUZ	1	1	0	1	142	142.00	0.00	1	1	142	(2)	(10)	(682)			

1/EXCLUDES: PRIOR MONTH NET TOTALS OF: 57 CASES; 224 RECIPIENTS; \$23,327.
GRANT DIVERSION TOTALS OF: 0 CASES; \$0.
ZERO PAY TOTALS OF 14 CASES; 62 RECIPIENTS.

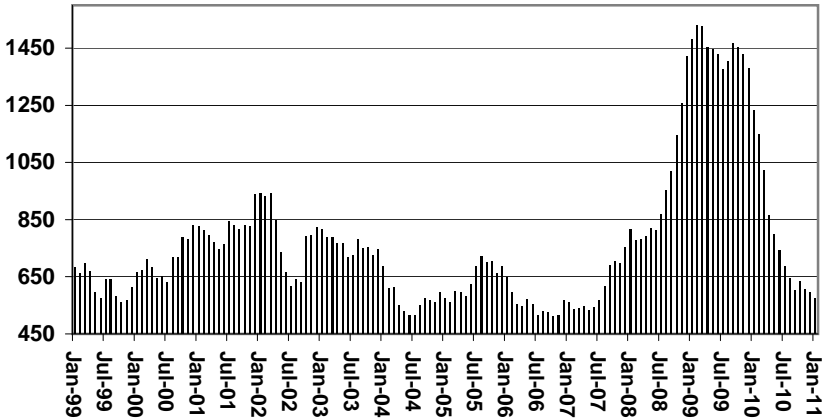
	CURRENT MO. CASES	CURRENT MO. RECIP.	CURRENT MO. DOLLARS	PRIOR MO. CASES	PRIOR MO. RECIP.	PRIOR MO. DOLLARS
PASQUAYQUI	6	26	\$2,004	0	0	\$0
WM APACHE	0	0	\$0	0	0	\$0
SALT RIVER	0	0	\$0	0	0	\$0
SAN CARLOS	0	0	\$0	0	0	\$0
HOPI	0	0	\$0	0	0	\$0
TOTAL	6	26	\$2,004	0	0	\$0

CASES WITH GRANT UNDER \$100 (SEE TABLE 1C).

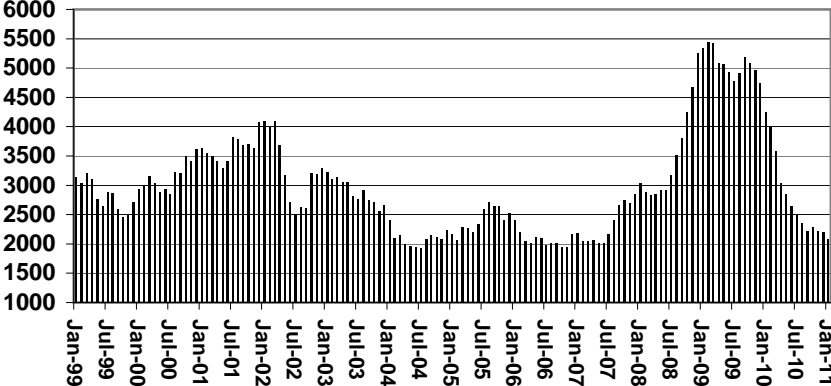
CHART 1A

CASH ASSISTANCE UNEMPLOYED PARENT PROGRAM COMPARISON OF CASES, RECIPIENTS, PAYMENTS & AVERAGE PAYMENTS FOR 1999, 2000, 2001, 2002, 2003, 2004, 2005, 2006, 2007, 2008, 2009, 2010, & 2011

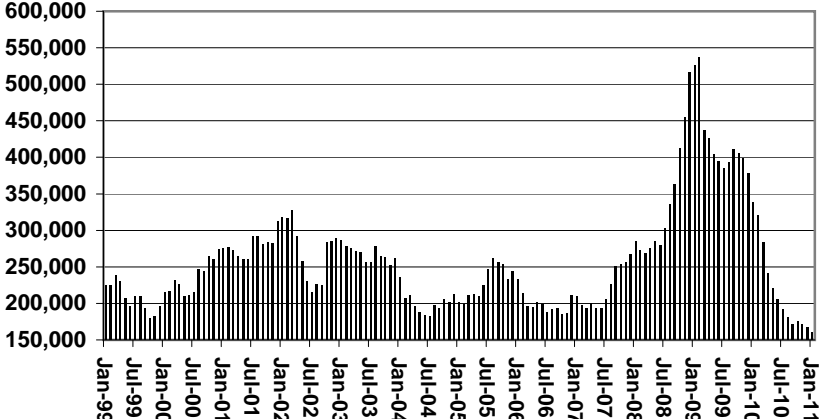
Cases



Recipients



Payments



Average Payment Per Recipient

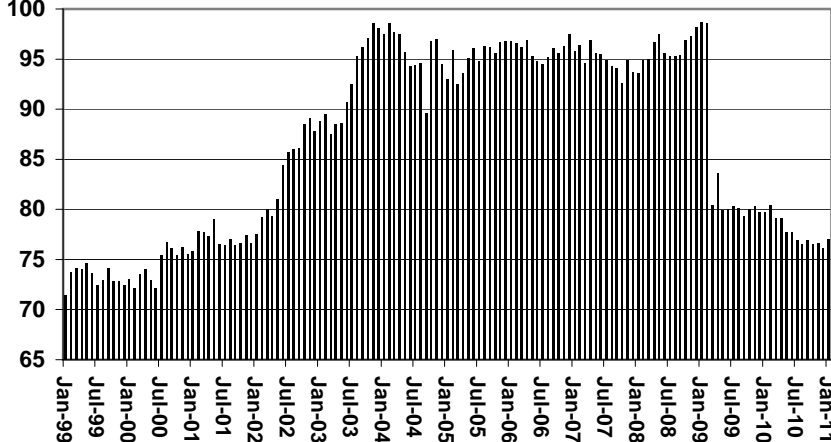


TABLE 1B 1/

**CASH ASSISTANCE: ARIZONA
CASES WITH GRANT UNDER \$100**

CHANGE FROM

	JANUARY 2011							DECEMBER 2010			JANUARY 2010		
	FAMILIES (CASES)	PERSONS (RECIP.)	ADULTS	CHILDREN	TOTAL PAYMENTS	AVERAGE PAYMENT/ CASE	AVERAGE PAYMENT/ RECIP.	FAMILIES (CASES)	PERSONS (RECIP.)	TOTAL PAYMENTS	FAMILIES (CASES)	PERSONS (RECIP.)	TOTAL PAYMENTS
ARIZONA	478	984	248	736	34,518	72.21	35.08	(6)	(22)	(1,872)	(423)	(821)	(27,505)
REGION													
MARICOPA	286	603	140	463	20,222	70.71	33.54	(8)	(34)	(1,465)	(285)	(557)	(18,396)
NORTHERN	23	49	15	34	1,755	76.30	35.82	(13)	(19)	(921)	(29)	(63)	(1,679)
APACHE	1	5	1	4	131	131.00	26.20	0	3	62	1	5	131
COCONINO	3	5	1	4	313	104.33	62.60	(2)	(7)	(229)	(1)	(4)	(3)
MOHAVE	17	34	11	23	1,146	67.41	33.71	(3)	(2)	(154)	(16)	(35)	(992)
NAVAJO	2	5	2	3	165	82.50	33.00	(8)	(13)	(600)	(13)	(29)	(815)
CENTRAL	51	99	25	74	3,928	77.02	39.68	3	12	361	(48)	(90)	(2,868)
GILA	3	7	2	5	265	88.33	37.86	2	4	144	(7)	(8)	(317)
LA PAZ	6	13	3	10	361	60.17	27.77	2	7	101	2	5	81
PINAL	22	40	8	32	1,943	88.32	48.58	1	2	283	(18)	(26)	(861)
YAVAPAI	12	25	7	18	843	70.25	33.72	3	10	269	(10)	(19)	(817)
YUMA	8	14	5	9	516	64.50	36.86	(5)	(11)	(436)	(15)	(42)	(954)
SOUTHERN	118	233	68	165	8,613	72.99	36.97	12	19	153	(61)	(111)	(4,562)
COCHISE	10	20	6	14	706	70.60	35.30	3	8	134	(12)	(18)	(914)
GRAHAM	2	4	2	2	132	66.00	33.00	0	1	64	(2)	(1)	(216)
GREENLEE	1	2	1	1	126	126.00	63.00	(2)	(4)	(132)	1	2	126
PIMA	101	195	58	137	7,305	72.33	37.46	13	20	264	(46)	(89)	(3,563)
SANTA CRUZ	4	12	1	11	344	86.00	28.67	(2)	(6)	(177)	(2)	(5)	5

EXCLUDES: PRIOR MONTH NET TOTALS OF 360 CASES; 774 RECIPIENTS; \$23,414.

CHART 1C

CASH ASSISTANCE UNEMPLOYED PARENT PROGRAM

CASES WITH GRANT UNDER \$100

FOR 1999, 2000, 2001, 2002, 2003, 2004, 2005, 2006, 2007, 2008, 2009, 2010, & 2011

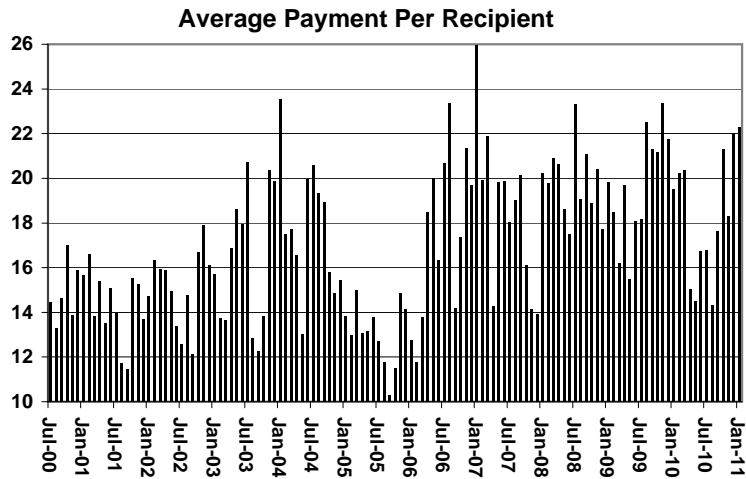
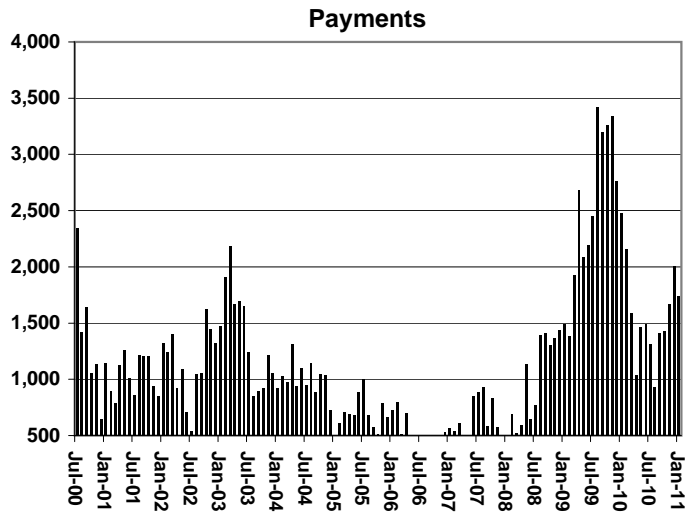
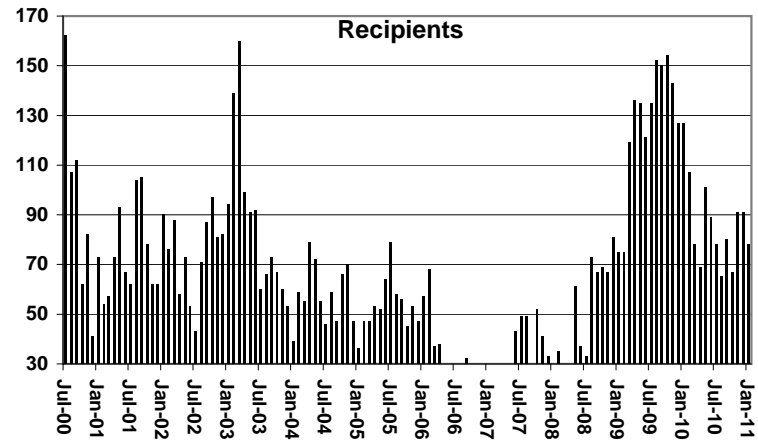
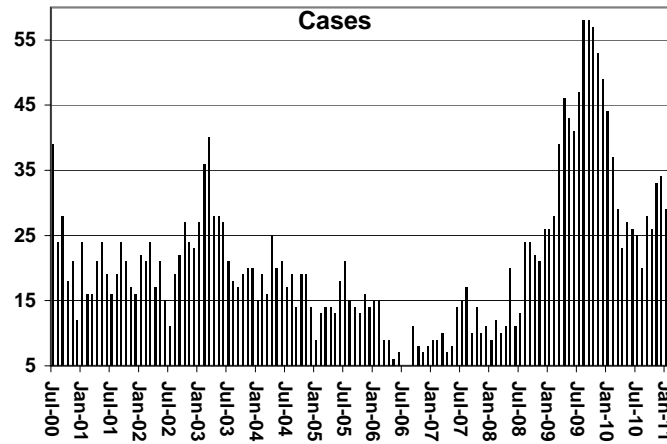


TABLE 1C 1/

CASH ASSISTANCE UNEMPLOYED PARENT PROGRAM: ARIZONA
 CASES WITH GRANT UNDER \$100

	JANUARY 2011							CHANGE FROM			JANUARY 2010		
	FAMILIES (CASES)	PERSONS (RECIP.)	ADULTS	CHILDREN	TOTAL PAYMENTS	AVERAGE	AVERAGE	FAMILIES (CASES)	PERSONS (RECIP.)	TOTAL PAYMENTS	FAMILIES (CASES)	PERSONS (RECIP.)	TOTAL PAYMENTS
						PAYMENT/ CASE	PAYMENT/ RECIP.						
ARIZONA	29	78	18	60	1,738	59.93	22.28	(5)	(13)	(266)	(15)	(49)	(742)
REGION													
MARICOPA	26	65	14	51	1,551	59.65	23.86	(4)	(16)	(246)	(11)	(42)	(444)
NORTHERN	0	0	0	0	0	0.00	0.00	0	0	0	(1)	(3)	(73)
APACHE	0	0	0	0	0	0.00	0.00	0	0	0	0	0	0
COCONINO	0	0	0	0	0	0.00	0.00	0	0	0	0	0	0
MOHAVE	0	0	0	0	0	0.00	0.00	0	0	0	0	0	0
NAVAJO	0	0	0	0	0	0.00	0.00	0	0	0	(1)	(3)	(73)
CENTRAL	2	6	2	4	77	38.50	12.83	0	0	20	(2)	(4)	(236)
GILA	0	0	0	0	0	0.00	0.00	0	0	0	0	0	0
LA PAZ	0	0	0	0	0	0.00	0.00	0	0	0	0	0	0
PINAL	1	3	2	1	48	48.00	16.00	0	0	20	(1)	(2)	(84)
YAVAPAI	0	0	0	0	0	0.00	0.00	0	0	0	(2)	(5)	(181)
YUMA	1	3	0	3	29	29.00	9.67	0	0	0	1	3	29
SOUTHERN	1	7	2	5	110	110.00	15.71	(1)	3	(40)	(1)	0	11
COCHISE	0	0	0	0	0	0.00	0.00	0	0	0	0	0	0
GRAHAM	0	0	0	0	0	0.00	0.00	0	0	0	0	0	0
GREENLEE	0	0	0	0	0	0.00	0.00	0	0	0	0	0	0
PIMA	1	7	2	5	110	110.00	15.71	(1)	3	(40)	(1)	0	11
SANTA CRUZ	0	0	0	0	0	0.00	0.00	0	0	0	0	0	0

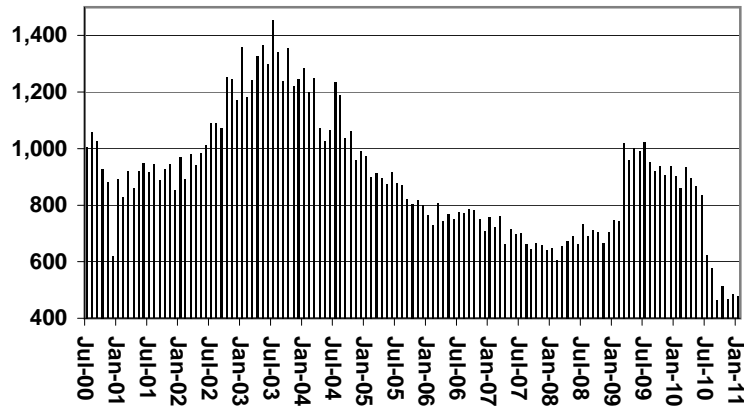
EXCLUDES: PRIOR MONTH NET TOTALS OF 28 CASES; 90 RECIPIENTS; \$1,277.

CHART 1B

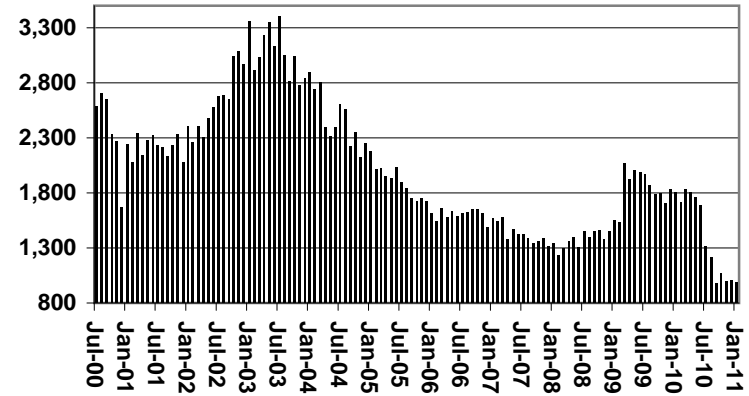
CASH ASSISTANCE PROGRAM CASES WITH GRANT UNDER \$100

FOR 1999, 2000, 2001, 2002, 2003, 2004, 2005, 2006, 2007, 2008, 2009, 2010, & 2011

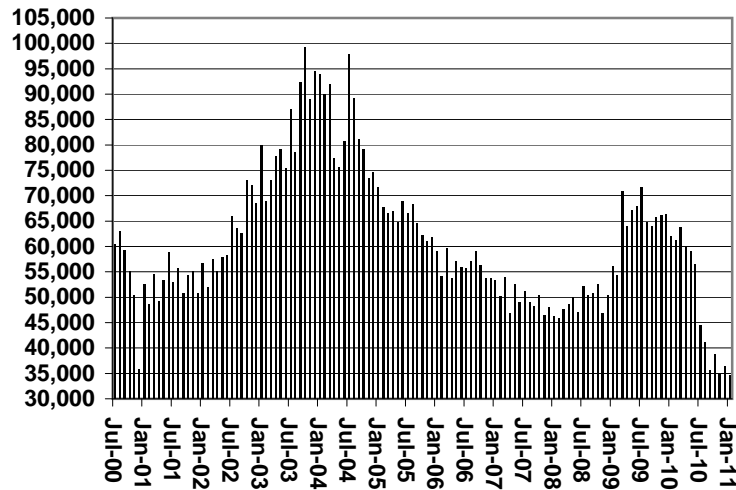
Cases



Recipients



Payments



Average Payment Per Recipient

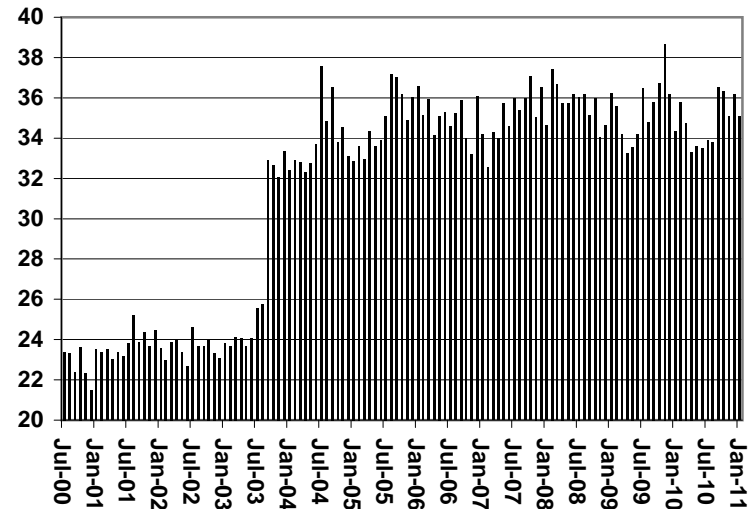


TABLE 4

TUBERCULOSIS CONTROL: ARIZONA 1/

	JANUARY 2011						CHANGE FROM					
							DECEMBER 2010			JANUARY 2010		
	NUMBER OF CASES	PERSONS (RECIP.)	TOTAL PAYMENTS	AVERAGE PAYMENT/ CASE	AVERAGE PAYMENT/ RECIP.		NUMBER OF CASES	PERSONS (RECIP.)	TOTAL PAYMENTS	NUMBER OF CASES	PERSONS (RECIP.)	TOTAL PAYMENTS
ARIZONA	2	2	281	140.50	140.50		1	1	108	1	1	108
REGION												
MARICOPA	2	2	281	140.50	140.50		1	1	108	1	1	108
NORTHERN	0	0	0	0.00	0.00		0	0	0	0	0	0
APACHE	0	0	0	0.00	0.00		0	0	0	0	0	0
COCONINO	0	0	0	0.00	0.00		0	0	0	0	0	0
MOHAVE	0	0	0	0.00	0.00		0	0	0	0	0	0
NAVAJO	0	0	0	0.00	0.00		0	0	0	0	0	0
CENTRAL	0	0	0	0.00	0.00		0	0	0	0	0	0
GILA	0	0	0	0.00	0.00		0	0	0	0	0	0
LA PAZ	0	0	0	0.00	0.00		0	0	0	0	0	0
PINAL	0	0	0	0.00	0.00		0	0	0	0	0	0
YAVAPAI	0	0	0	0.00	0.00		0	0	0	0	0	0
YUMA	0	0	0	0.00	0.00		0	0	0	0	0	0
SOUTHERN	0	0	0	0.00	0.00		0	0	0	0	0	0
COCHISE	0	0	0	0.00	0.00		0	0	0	0	0	0
GRAHAM	0	0	0	0.00	0.00		0	0	0	0	0	0
GREENLEE	0	0	0	0.00	0.00		0	0	0	0	0	0
PIMA	0	0	0	0.00	0.00		0	0	0	0	0	0
SANTA CRUZ	0	0	0	0.00	0.00		0	0	0	0	0	0

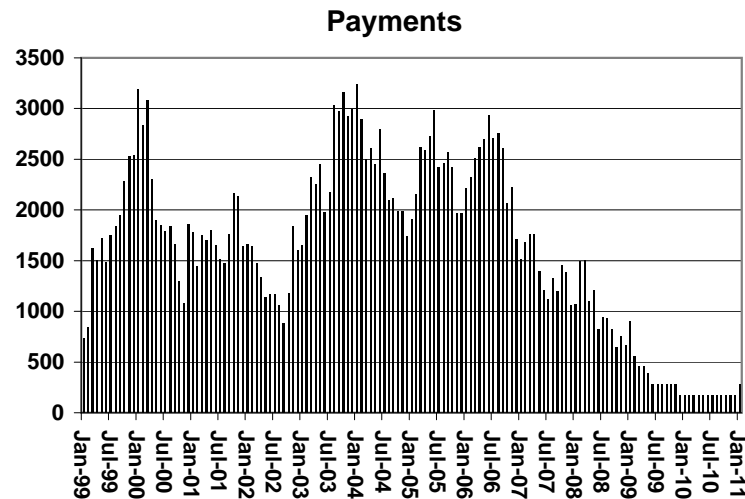
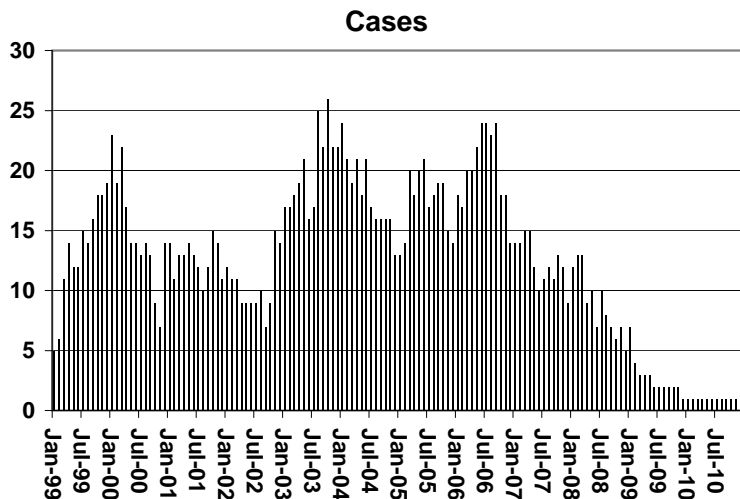
1/EXCLUDES: PRIOR MONTH NET TOTALS OF : 1 CASES; 1 RECIPIENTS; \$299.

CHART 4

TUBERCULOSIS CONTROL PROGRAM

COMPARISON OF CASES, PAYMENTS & AVERAGE PAYMENTS

FOR 1999, 2000, 2001, 2002, 2003, 2004, 2005, 2006, 2007, 2008, 2009, 2010, & 2011



Average Payment Per Case

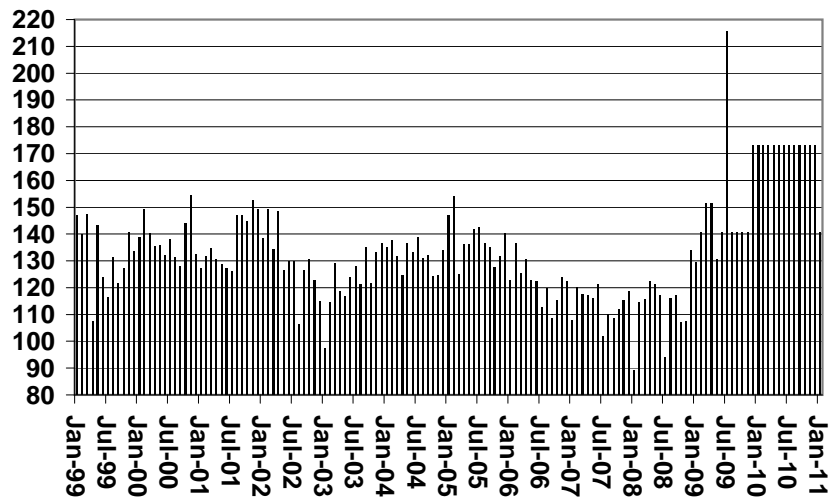


TABLE 6

SUPPLEMENTAL NUTRITION ASSISTANCE PROGRAM: ARIZONA 1

	CHANGE FROM												
	JANUARY 2011				DECEMBER 2010			JANUARY 2010					
	HOUSEHOLDS	PERSONS	ADULTS	CHILDREN	TOTAL PAYMENTS ISSUANCE	AVERAGE PAYMT./ HOUSEHOLD	AVERAGE PAYMT./ PERSON	HOUSEHOLDS	PERSONS	TOTAL PAYMENTS ISSUANCE	HOUSEHOLDS	PERSONS	TOTAL PAYMENTS ISSUANCE
ARIZONA	455,595	1,039,326	537,978	501,348	132,405,000	290.62	127.40	(4,727)	(11,360)	(1,174,662)	24,114	33,516	2,295,729
REGION													
MARICOPA	243,525	558,999	271,444	287,555	71,585,688	293.96	128.06	(3,583)	(7,971)	(843,070)	7,736	8,224	(367,640)
NORTHERN	52,816	127,298	71,591	55,707	15,948,647	301.97	125.29	63	65	55,243	3,189	3,501	502,635
APACHE	9,973	27,429	14,812	12,617	3,387,056	339.62	123.48	45	106	26,835	630	393	792,712
COCONINO	9,484	23,244	12,409	10,835	2,880,791	303.75	123.94	(47)	(95)	10,876	348	72	(247,520)
MOHAVE	20,331	42,778	25,805	16,973	5,442,673	267.70	127.23	48	(81)	12,098	1,393	2,092	631,644
NAVAJO	13,028	33,847	18,565	15,282	4,238,127	325.31	125.21	17	135	5,434	818	944	(674,201)
CENTRAL	59,962	139,644	76,126	63,518	17,449,626	291.01	124.96	(510)	(1,768)	(213,698)	5,084	9,114	760,458
GILA	6,103	13,199	7,780	5,419	1,729,711	283.42	131.05	47	129	20,021	622	1,085	13,199
LA PAZ	2,041	4,120	2,386	1,734	539,550	264.36	130.96	11	24	9,256	177	257	37,241
PINAL	21,586	52,682	27,429	25,253	6,755,686	312.97	128.24	(105)	(274)	(6,146)	1,933	3,735	196,935
YAVAPAI	14,795	29,730	17,952	11,778	3,703,992	250.35	124.59	48	123	36,286	1,201	1,792	188,492
YUMA	15,437	39,913	20,579	19,334	4,720,687	305.80	118.27	(511)	(1,770)	(273,115)	1,151	2,245	324,591
SOUTHERN	99,292	213,385	118,817	94,568	27,421,039	276.17	128.50	(697)	(1,686)	(173,137)	8,105	12,677	1,400,276
COCHISE	10,452	22,542	12,831	9,711	2,816,118	269.43	124.93	(10)	(14)	(6,163)	694	1,210	169,116
GRAHAM	3,452	7,957	4,447	3,510	1,024,640	296.83	128.77	(6)	0	(394)	286	324	131,561
GREENLEE	488	1,064	607	457	133,170	272.89	125.16	(14)	(19)	(3,027)	(35)	(154)	3,707
PIMA	80,460	170,037	94,966	75,071	22,034,752	273.86	129.59	(593)	(1,416)	(142,696)	6,792	10,582	1,070,218
SANTA CRUZ	4,440	11,785	5,966	5,819	1,412,359	318.10	119.84	(74)	(237)	(20,857)	368	715	25,674

1/EXCLUDES: PRIOR MONTH NET TOTALS OF : 10,747 CASES; 24,572 RECIPIENTS; \$2,424,276.

AGED CANCELATIONS: 11,353 CASES; 14,063 RECIPIENTS; \$634,443.

SNAP CONVERSIONS: 0 CASES; 0 RECIPIENTS; \$0.

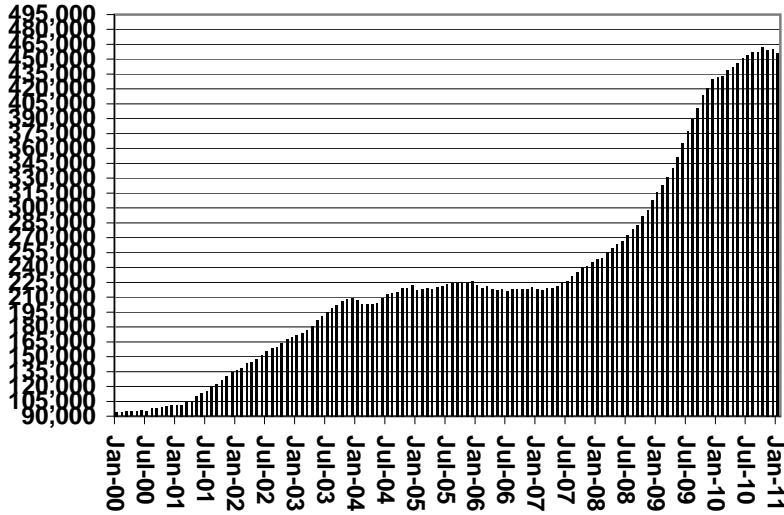
SNAP CHILD ONLY: 57,270 CASES; 134,958 RECIPIENTS; \$20,381,395.

SNAP ZERO PAY: 12,929 CASES; 53,263 RECIPIENTS.

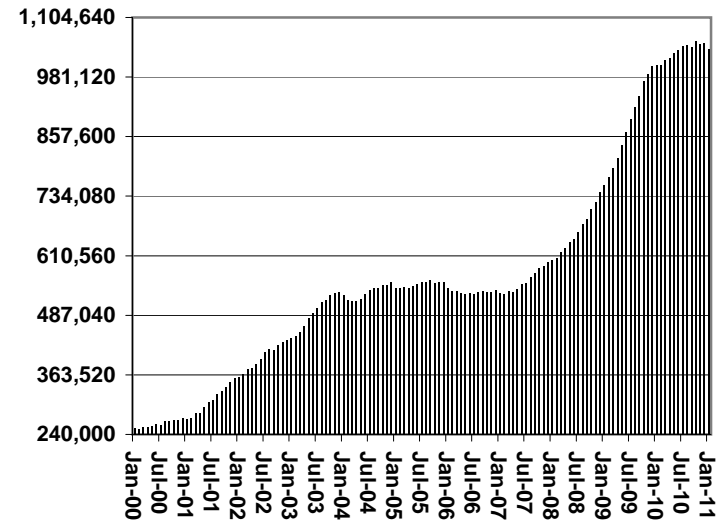
CHART 6

SUPPLEMENTAL NUTRITION ASSISTANCE PROGRAM (SNAP) COMPARISON OF HOUSEHOLDS, RECIPIENTS, PAYMENTS & AVERAGE PAYMENTS FOR 1999, 2000, 2001, 2002, 2003, 2004, 2005, 2006, 2007, 2008, 2009, 2010, & 2011

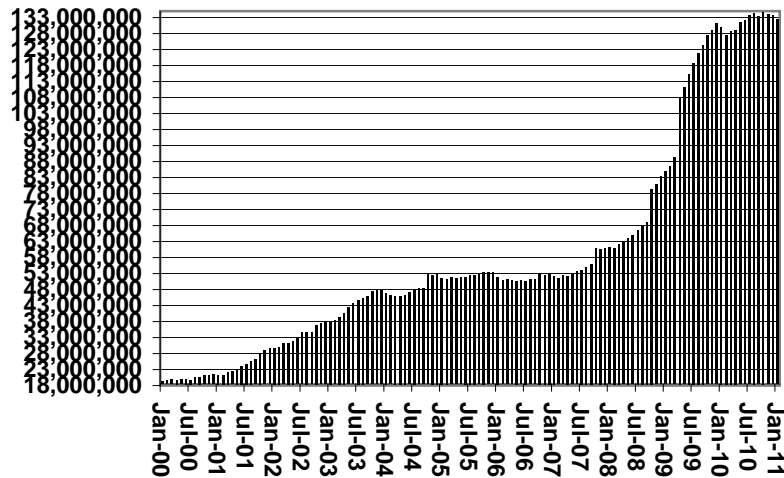
Households



Recipients



Payments



Average Payment Per Household

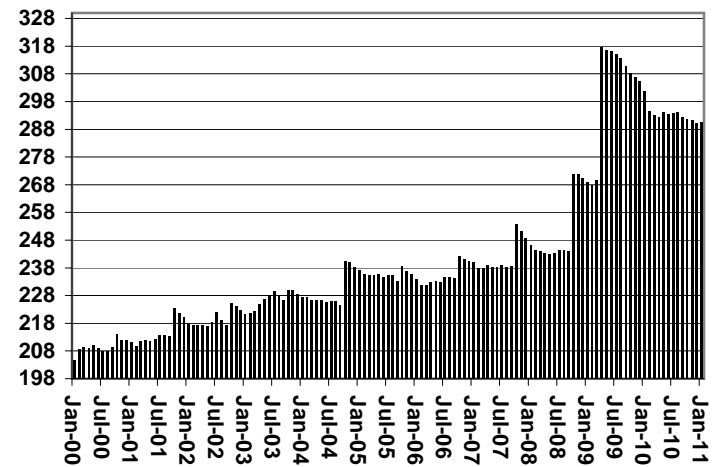


TABLE 7A
MEDICAL ASSISTANCE PROGRAM
RECIPIENTS

JANUARY 2011

	SOBRA WOMAN 133% FPL	SOBRA CHILD	ADULT W/O CHILD 100% FPL	FOSTER CARE	1931 36% FPL	FEDERAL EMERGENCY SERVICES	INFANTS	ADULT W/O CHILD 40% FPL	MEDICAL W/SPEND DOWN	SOBRA WOMAN 100% FPL	SOBRA CHILD 100% FPL	TRANSITIONAL MEDICAL T1 - T4	1931 100% FPL	YATI	OTHER	TOTAL CASES
ARIZONA	10,621	70,473	63,962	12,572	336,556	50,385	46,413	173,590	7,079	3,665	229,129	45,962	125,519	342	28,569	1,204,837
REGION																
MARICOPA	5,658	40,255	31,408	6,718	186,116	39,106	27,643	88,110	3,810	1,871	134,022	22,624	65,273	183	14,738	667,535
NORTHERN	1,206	7,678	7,730	664	44,145	1,089	4,758	25,897	911	512	23,352	5,635	14,976	17	3,077	141,647
APACHE	193	1,522	1,071	37	11,526	79	951	5,863	145	104	4,206	1,072	2,659	0	413	29,841
COCONINO	294	1,484	1,719	131	8,456	392	1,074	4,704	124	98	4,835	1,261	3,038	13	444	28,067
MOHAVE	378	2,362	3,101	343	11,663	406	1,436	8,280	459	172	8,409	1,924	5,365	3	1,628	45,929
NAVAJO	341	2,310	1,839	153	12,500	212	1,297	7,050	183	138	5,902	1,378	3,914	1	592	37,810
CENTRAL	1,688	9,416	9,746	1,489	43,443	3,805	6,000	22,541	1,088	572	29,137	7,741	18,753	48	4,378	159,845
GILA	114	687	806	100	4,590	116	520	2,696	117	39	2,011	414	1,382	3	367	13,962
LA PAZ	34	265	269	17	1,305	133	154	861	24	19	719	170	428	0	161	4,559
PINAL	594	4,074	2,917	590	18,323	1,183	2,237	8,664	368	171	10,533	2,181	6,244	17	1,315	59,411
YAVAPAI	392	1,769	2,835	484	7,356	1,164	1,155	5,263	294	121	6,286	1,630	4,184	24	1,218	34,175
YUMA	554	2,621	2,919	298	11,869	1,209	1,934	5,057	285	222	9,588	3,346	6,515	4	1,317	47,738
SOUTHERN	2,069	13,124	15,078	3,701	62,852	6,385	8,012	37,042	1,270	710	42,618	9,962	26,517	94	6,376	235,810
COCHISE	233	1,284	1,794	243	6,936	442	817	3,354	154	83	4,368	971	2,835	4	925	24,443
GRAHAM	116	479	498	70	2,764	24	337	1,491	60	25	1,439	385	894	2	165	8,749
GREENLEE	18	54	57	7	430	3	53	221	5	5	235	76	108	2	32	1,306
PIMA	1,599	10,612	11,809	3,349	49,249	5,467	6,366	30,760	964	552	33,467	7,943	20,668	85	4,784	187,674
SANTA CRUZ	103	695	920	32	3,473	449	439	1,216	87	45	3,109	587	2,012	1	470	13,638

TABLE 7B
MEDICAL ASSISTANCE PROGRAM
RECIPIENTS

CHANGE FROM
DECEMBER 2010

	SOBRA WOMAN 133% FPL	SOBRA CHILD	ADULT W/O CHILD 100% FPL	FOSTER CARE	1931 36% FPL	FEDERAL EMERGENCY SERVICES	INFANTS	ADULT W/O CHILD 40% FPL	MEDICAL W/SPEND DOWN	SOBRA WOMAN 100% FPL	SOBRA CHILD 100% FPL	TRANSITIONAL MEDICAL T1 - T4	1931 100% FPL	YATI	OTHER	TOTAL CASES
ARIZONA	35	(396)	(370)	70	(1,050)	75	(523)	791	138	10	(654)	1,421	(889)	(18)	257	(1,103)
REGION																
MARICOPA	32	(228)	(213)	111	(1,093)	121	(344)	133	54	19	(180)	211	(416)	(16)	120	(1,689)
NORTHERN	35	(10)	(7)	7	503	14	(51)	360	2	(6)	50	(63)	14	(1)	44	891
APACHE	10	21	(22)	3	244	(3)	(5)	127	12	3	(59)	(49)	(65)	0	10	227
COCONINO	8	(11)	24	2	142	20	(4)	53	(4)	(8)	17	(19)	(15)	0	(1)	204
MOHAVE	7	(12)	11	0	33	5	(42)	95	9	1	48	26	57	0	39	277
NAVAJO	10	(8)	(20)	2	84	(8)	0	85	(15)	(2)	44	(21)	37	(1)	(4)	183
CENTRAL	(41)	(61)	(58)	(60)	(257)	(79)	(82)	100	30	(17)	(399)	989	(297)	4	18	(210)
GILA	(9)	(19)	9	1	74	(4)	(5)	66	16	1	(10)	7	(21)	3	3	112
LA PAZ	(11)	(6)	(7)	0	17	1	(1)	(3)	3	3	18	(36)	9	0	(3)	(16)
PINAL	(23)	3	9	(48)	133	25	(3)	143	17	(14)	(19)	143	1	(1)	41	407
YAVAPAI	(3)	(7)	25	(9)	56	28	(13)	13	(10)	1	28	58	(13)	3	(18)	139
YUMA	5	(32)	(94)	(4)	(537)	(129)	(60)	(119)	4	(8)	(416)	817	(273)	(1)	(5)	(852)
SOUTHERN	9	(97)	(92)	12	(203)	19	(46)	198	52	14	(125)	284	(190)	(5)	75	(95)
COCHISE	(4)	16	48	(1)	(52)	(7)	(2)	22	9	5	30	(43)	30	1	25	77
GRAHAM	0	(11)	(5)	(3)	32	0	5	32	4	(1)	(19)	18	(25)	0	(2)	25
GREENLEE	(4)	(1)	(8)	0	0	1	3	8	1	1	25	18	(4)	0	(9)	31
PIMA	16	(99)	(95)	16	(184)	23	(55)	131	23	15	(97)	246	(138)	(6)	70	(134)
SANTA CRUZ	1	(2)	(32)	0	1	2	3	5	15	(6)	(64)	45	(53)	0	(9)	(94)

TABLE 7C
MEDICAL ASSISTANCE PROGRAM
RECIPIENTS

CHANGE FROM

JANUARY 2010

	SOBRA WOMAN 133% FPL	SOBRA CHILD	ADULT W/O CHILD 100% FPL	FOSTER CARE	1931 36% FPL	FEDERAL EMERGENCY SERVICES	INFANTS	ADULT W/O CHILD 40% FPL	MEDICAL W/SPEND DOWN	SOBRA WOMAN 100% FPL	SOBRA CHILD 100% FPL	TRANSITIONAL MEDICAL T1 - T4	3E 1931 100% FPL	YATI	OTHER	TOTAL CASES
ARIZONA	326	4,518	5,329	787	3,830	(28,607)	(4,114)	17,592	595	(98)	4,049	3,041	8,377	11	2,207	17,843
REGION																
MARICOPA	113	3,083	3,342	627	(156)	(22,683)	(2,466)	9,798	367	(53)	2,408	1,532	5,591	(23)	1,282	2,762
NORTHERN	23	416	275	54	1,097	(696)	(463)	2,090	43	(13)	(598)	755	(262)	(1)	293	3,013
APACHE	13	110	38	(8)	617	(45)	(54)	585	19	1	(503)	253	(332)	(1)	40	733
COCONINO	8	76	105	(5)	266	(78)	(82)	77	15	(18)	(290)	220	(76)	5	55	278
MOHAVE	(31)	179	74	49	244	(417)	(173)	946	12	3	188	188	206	(3)	153	1,618
NAVAJO	33	51	58	18	(30)	(156)	(154)	482	(3)	1	7	94	(60)	(2)	45	384
CENTRAL	118	347	622	20	1,982	(1,452)	(234)	1,997	59	(16)	996	(415)	1,526	21	174	5,745
GILA	(7)	29	9	3	247	(49)	(32)	176	13	3	7	(41)	39	3	38	438
LA PAZ	1	36	2	0	51	(21)	10	59	(2)	2	27	(36)	19	0	4	152
PINAL	84	117	233	(13)	1,076	(428)	26	868	95	(18)	773	68	625	6	15	3,527
YAVAPAI	10	28	183	27	(54)	(441)	(216)	220	(47)	(5)	161	129	253	12	41	301
YUMA	30	137	195	3	662	(513)	(22)	674	0	2	28	(535)	590	0	76	1,327
SOUTHERN	72	672	1,090	86	907	(3,776)	(951)	3,707	126	(16)	1,243	1,169	1,522	14	458	6,323
COCHISE	31	84	137	(12)	214	(157)	(102)	268	41	0	236	(77)	102	(1)	108	872
GRAHAM	17	(12)	11	(8)	295	(28)	(75)	229	6	(14)	(60)	(84)	(107)	2	23	195
GREENLEE	7	0	(18)	(1)	48	(4)	(13)	51	(6)	(5)	(53)	21	(68)	2	5	(34)
PIMA	14	493	924	104	137	(3,438)	(722)	2,965	60	7	1,067	1,354	1,474	11	287	4,737
SANTA CRUZ	3	107	36	3	213	(149)	(39)	194	25	(4)	53	(45)	121	0	35	553

CHART 7

MEDICAL ASSISTANCE PROGRAM

COMPARISON OF RECIPIENTS

FOR 1999, 2000, 2001, 2002, 2003, 2004, 2005, 2006, 2007, 2008, 2009, 2010, & 2011

Total Recipients

