



DEPARTMENT OF ECONOMIC SECURITY

Your Partner For A Stronger Arizona

State of Arizona

Department of Economic Security

Family Assistance Administration

Statistical Bulletin

February, 2011

Phone: (602) 542-3678

<https://www.azdes.gov/appreports.aspx>

**** STATISTICAL BULLETIN ****
ARIZONA DEPARTMENT OF ECONOMIC SECURITY
FAMILY ASSISTANCE ADMINISTRATION
BOX 6123, PHOENIX, ARIZONA 85005
PHONE (602) 542-3678

FEBRUARY 2011

THIS ISSUE OF THE STATISTICAL BULLETIN COMPARES FEBRUARY 2011 DATA FOR EACH OF THE INDICATED PROGRAMS WITH THE INFORMATION FOR JANUARY 2011 AND FEBRUARY 2010. STATEWIDE SUMMARIES OF ACTIVITY WITHIN EACH OF THE SPECIFIC PROGRAMS FOR THIS REPORT PERIOD ARE DISCUSSED BELOW. THE TABLES COMPARE CURRENT AND PRIOR MONTH DATA. DISTRICT AND COUNTY COMPARISONS ARE PROVIDED WITHIN THIS BULLETIN

TANF SUMMARY

COMPARING TO JANUARY 2011, FEBRUARY 2011 CASES DECREASED BY 573 (2.97%) TO 18,723. RECIPIENTS DECREASED BY 1,464 (3.34%) TO 42,336. PAYMENTS DECREASED BY \$127,824 (3.12%) TO \$3,968,622. AVERAGE PAYMENT PER CASE DECREASED BY \$0.33 (0.16%) TO \$0.00. PAYMENT PER RECIPIENT INCREASED BY \$0.21 (0.22%) TO \$93.74.

COMPARING TO FEBRUARY 2010, FEBRUARY 2011 CASES DECREASED BY 18,607 (49.84%). RECIPIENTS DECREASED BY 38,574 (47.68%). TOTAL PAYMENTS DECREASED BY \$3,958,027 (49.93%). THE AVERAGE PAYMENT PER CASE DECREASED BY \$0.37 (0.17%). THE AVERAGE PAYMENT PER RECIPIENT DECREASED BY \$4.23 (4.32%).

CASH ASSISTANCE (CA)

COMPARING TO JANUARY 2011, FEBRUARY 2011 CASES DECREASED BY 520 (2.85%) TO 17,694. RECIPIENTS DECREASED BY 1,317 (3.24%) TO 39,339. PAYMENTS DECREASED BY \$119,823 (3.07%) TO \$3,779,981. AVERAGE PAYMENT PER CASE DECREASED BY \$0.48 (0.22%) TO \$213.63. PAYMENT PER RECIPIENT INCREASED BY \$0.17 (0.18%) TO \$96.09.

COMPARING TO FEBRUARY 2010, FEBRUARY 2011 CASES DECREASED BY 17,594 (49.86%). RECIPIENTS DECREASED BY 35,765 (47.62%). TOTAL PAYMENTS DECREASED BY \$3,762,531 (49.88%). THE AVERAGE PAYMENT PER CASE DECREASED BY \$0.11 (0.05%). THE AVERAGE PAYMENT PER RECIPIENT DECREASED BY \$4.34 (4.32%).

CASH ASSISTANCE UNEMPLOYED PARENT PROGRAM (CA-UP)

COMPARING TO JANUARY 2011, FEBRUARY 2011 CASES DECREASED BY 26 (4.52%) TO 549. RECIPIENTS DECREASED BY 102 (4.90%) TO 1,980. PAYMENTS DECREASED BY \$7,843 (4.89%) TO \$152,543. AVERAGE PAYMENT PER CASE DECREASED BY \$1.07 (0.38%) TO \$277.86. PAYMENT PER RECIPIENT INCREASED BY \$0.01 (0.01%) TO \$77.04

COMPARING TO FEBRUARY 2010, FEBRUARY 2011 CASES DECREASED BY 597 (52.09%). RECIPIENTS DECREASED BY 2,008 (50.35%). TOTAL PAYMENTS DECREASED BY \$168,223 (52.44%). THE AVERAGE PAYMENT PER CASE DECREASED BY \$2.05 (0.73%). THE AVERAGE PAYMENT PER RECIPIENT DECREASED BY \$3.39 (4.22%).

CASH ASSISTANCE WITH GRANT UNDER \$100 (CA-MOE)

COMPARING TO JANUARY 2011, FEBRUARY 2011 CASES DECREASED BY 21 (4.39%) TO 457. RECIPIENTS DECREASED BY 27 (2.74%) TO 957. PAYMENTS INCREASED BY \$155 (0.45%) TO \$34,673. AVERAGE PAYMENT PER CASE INCREASED BY \$3.66 (5.07%) TO \$75.87. AVERAGE PAYMENT PER RECIPIENT INCREASED BY \$1.15 (3.28%) TO \$36.23.

COMPARING TO FEBRUARY 2010, FEBRUARY 2011 CASES DECREASED BY 402 (46.80%). RECIPIENTS DECREASED BY 754 (44.07%). TOTAL PAYMENTS DECREASED BY \$26,535 (43.35%). THE AVERAGE PAYMENT PER CASE INCREASED BY \$4.62 (6.48%). THE AVERAGE PAYMENT PER RECIPIENT INCREASED BY \$0.46 (1.29%).

CASH ASSISTANCE UNEMPLOYED PARENT PROGRAM WITH GRANT UNDER \$100 (CA-UP-MOE) NEW PROGRAM STARTING 7/01

COMPARING TO JANUARY 2011, FEBRUARY 2011 CASES DECREASED BY 6 (20.69%) TO 23. RECIPIENTS DECREASED BY 18 (23.08%) TO 60. PAYMENTS DECREASED BY \$313 (18.01%) TO \$1,425. AVERAGE PAYMENT PER CASE INCREASED BY \$2.03 (3.39%) TO \$61.96. PAYMENT PER RECIPIENT INCREASED BY \$1.47 (6.60%) TO \$23.75.

COMPARING TO FEBRUARY 2010, FEBRUARY 2011 CASES DECREASED BY 14 (37.84%). RECIPIENTS DECREASED BY 47 (2.70%). TOTAL PAYMENTS DECREASED BY \$738 (34.12%). THE AVERAGE PAYMENT PER CASE INCREASED BY \$3.50 (5.99%). THE AVERAGE PAYMENT PER RECIPIENT INCREASED BY \$3.54 (17.52%).

TUBERCULOSIS CONTROL PROGRAM (TC)

COMPARING TO JANUARY 2011, FEBRUARY 2011 CASES INCREASED BY 1 (50.00%) TO 3. RECIPIENTS INCREASED BY 1 (50.00%) TO 3. PAYMENTS INCREASED BY \$108 (38.43%) TO \$389. AVERAGE PAYMENT PER CASE INCREASED BY \$71.47 (50.87%) TO \$211.97. AVERAGE PAYMENT PER RECIPIENT DECREASED BY \$10.83 (7.71%) TO \$129.67.

COMPARING TO FEBRUARY 2010, FEBRUARY 2011 CASES INCREASED BY 2 (200.00%). RECIPIENTS INCREASED BY 2 (200.00%). TOTAL PAYMENTS INCREASED BY \$216 (124.86%). THE AVERAGE PAYMENT PER CASE INCREASED BY \$38.97 (22.53%). THE AVERAGE PAYMENT PER RECIPIENT DECREASED BY \$43.33 (25.05%).

SUPPLEMENTAL NUTRITION ASSISTANCE PROGRAM (SNAP)

COMPARING TO JANUARY 2011, FEBRUARY 2011 SUPPLEMENTAL NUTRITION ASSISTANCE HOUSEHOLDS DECREASED BY 4,048 (0.89%) TO 451,547. PERSONS RECEIVING SUPPLEMENTAL NUTRITION ASSISTANCE DECREASED BY 9,187 (0.88%) TO 1,030,139. TOTAL COUPON ISSUANCE DECREASED BY \$1,365,779 (1.03%) TO \$131,039,221. THE AVERAGE HOUSEHOLD ALLOTMENT DECREASED BY \$0.42 (0.14%) TO \$290.20. THE AVERAGE ALLOTMENT PER PERSON DECREASED BY \$0.19 (0.15%) TO \$127.21.

COMPARING TO FEBRUARY 2010, FEBRUARY 2011 SUPPLEMENTAL NUTRITION ASSISTANCE HOUSEHOLDS INCREASED BY 18,941 (4.38%). PERSONS RECEIVING SUPPLEMENTAL NUTRITION ASSISTANCE INCREASED BY 24,134 (2.40%). TOTAL COUPON ISSUANCE INCREASED BY \$3,546,464 (2.78%). THE AVERAGE ALLOTMENT PER HOUSEHOLD DECREASED BY \$4.51 (1.53%). THE AVERAGE ALLOTMENT PER PERSON INCREASED BY \$0.48 (0.38%).

MEDICAL ASSISTANCE PROGRAM (MA) NEW TABLE INCLUDES PROP. 204 CATEGORIES

COMPARING TO JANUARY 2010, FEBRUARY 2010 TOTAL RECIPIENTS TOTAL RECIPIENTS DECREASED BY 6,946 (0.59%). SOBRA WOMEN AT 140% FPL DECREASED BY 248 (2.41%). SOBRA CHILDREN DECREASED BY 812 (1.23%). ADULTS W/O CHILD AT 100% INCREASED BY 446 (0.76%). FOSTER CARE INCREASED BY 69 (0.59%). 1931 AT 36% FPL DECREASED BY 4,919 (1.48%). EMERGENCY SERVICES DECREASED BY 5,083 (6.43%). INFANTS DECREASED BY 513 (1.02%). ADULT W/O CHILD AT 140% INCREASED BY 510 (0.33%). MEDICAL W/SPEND DOWN DECREASED BY 201 (3.10%). SOBRA WOMAN AT 100% INCREASED BY 99 (2.63%). SOBRA CHILD AT 100% INCREASED BY 902 (0.40%). TRANSITIONAL MEDICAL INCREASED BY 1,305 (3.04%). 1931 AT 100% INCREASED BY 1,355 (1.16%). YATI INCREASED BY 10 (3.02%). ALL OTHER CATEGORIES INCREASED BY 134 (0.51%).

COMPARING TO FEBRUARY 2010, FEBRUARY 2011 TOTAL RECIPIENTS TOTAL RECIPIENTS INCREASED BY 18,587 (1.58%). SOBRA WOMEN AT 140% FPL INCREASED BY 423 (4.21%). SOBRA CHILDREN INCREASED BY 4,594 (7.05%). ADULTS W/O CHILD AT 100% INCREASED BY 4,697 (7.95%). FOSTER CARE INCREASED BY 671 (5.66%). 1931 AT 36% FPL INCREASED BY 6,054 (1.85%). EMERGENCY SERVICES DECREASED BY 23,892 (32.33%). INFANTS DECREASED BY 4,189 (8.38%). ADULT W/O CHILD AT 140% INCREASED BY 16,127 (10.30%). MEDICAL W/SPEND DOWN INCREASED BY 868 (13.82%). SOBRA WOMAN AT 100% DECREASED BY 143 (3.70%). SOBRA CHILD AT 100% INCREASED BY 2,979 (1.32%). TRANSITIONAL MEDICAL INCREASED BY 2,082 (4.71%). 1931 AT 100% INCREASED BY 6,014 (5.08%). YATI INCREASED BY 3 (0.88%). ALL OTHER CATEGORIES INCREASED BY 2,299 (8.68%).

TANF SUMMARY

TABLES 1, 1A, 1B, & 1C: ARIZONA 1/

	FEBRUARY 2011							JANUARY 2011			CHANGE FROM FEBRUARY 2010		
	FAMILIES (CASES)	PERSONS (RECIP.)	ADULTS	CHILDREN	TOTAL PAYMENTS	AVERAGE	AVERAGE	FAMILIES (CASES)	PERSONS (RECIP.)	TOTAL PAYMENTS	FAMILIES (CASES)	PERSONS (RECIP.)	TOTAL PAYMENTS
						PAYMENT/ CASE	PAYMENT/ RECIP.						
ARIZONA	18,723	42,336	11,373	30,963	3,968,622	211.97	93.74	(573)	(1,464)	(127,824)	(18,607)	(38,574)	(3,958,027)
REGION													
MARICOPA	11,579	26,846	7,100	19,746	2,459,614	212.42	91.62	(357)	(900)	(81,556)	(11,414)	(23,834)	(2,383,328)
NORTHERN	1,025	2,253	626	1,627	213,213	208.01	94.64	(25)	(64)	(4,447)	(1,802)	(4,370)	(469,708)
APACHE	37	69	19	50	7,205	194.73	104.42	1	(2)	353	34	55	6,294
COCONINO	78	194	46	148	17,274	221.46	89.04	(1)	11	198	(131)	(251)	(25,452)
MOHAVE	592	1,235	352	883	122,415	206.78	99.12	(14)	(34)	(1,396)	(545)	(1,073)	(110,352)
NAVAJO	318	755	209	546	66,319	208.55	87.84	(11)	(39)	(3,602)	(1,160)	(3,101)	(340,198)
CENTRAL	2,135	4,620	1,246	3,374	455,322	213.27	98.55	(97)	(270)	(22,837)	(2,059)	(4,263)	(430,300)
GILA	462	991	368	623	113,672	246.04	114.70	(33)	(94)	(8,125)	(266)	(541)	(60,333)
LA PAZ	75	157	40	117	14,541	193.88	92.62	(2)	(14)	(195)	(93)	(185)	(18,485)
PINAL	886	1,922	470	1,452	179,623	202.73	93.46	(29)	(91)	(7,030)	(903)	(1,985)	(190,894)
YAVAPAI	279	559	129	430	54,896	196.76	98.20	1	6	(209)	(352)	(650)	(68,776)
YUMA	433	991	239	752	92,590	213.83	93.43	(34)	(77)	(7,278)	(445)	(902)	(91,812)
SOUTHERN	3,984	8,617	2,401	6,216	840,473	210.96	97.54	(94)	(230)	(18,984)	(3,332)	(6,107)	(674,691)
COCHISE	342	671	154	517	69,467	203.12	103.53	(3)	(8)	(345)	(426)	(823)	(87,507)
GRAHAM	235	465	155	310	53,383	227.16	114.80	6	16	623	(23)	(9)	(4,219)
GREENLEE	19	45	14	31	3,793	199.63	84.29	2	6	106	(3)	(1)	(916)
PIMA	3,282	7,202	2,034	5,168	691,726	210.76	96.05	(97)	(257)	(20,181)	(2,760)	(5,064)	(558,314)
SANTA CRUZ	106	234	44	190	22,104	208.53	94.46	(2)	13	813	(120)	(210)	(23,735)

1/EXCLUDES: PRIOR MONTH NET TOTALS OF 1,047 CASES; 2,595 RECIPIENTS; \$215,827.

GRANT DIVERSION TOTALS OF: 1,445 CASES; \$1,077,038.

ZERO PAY TOTALS OF 3,418 CASES; 10,014 RECIPIENTS.

RRP: 256 CASES; 400 RECIPIENTS; \$53,596.

1/INCLUDES: TANF CHILD ONLY: 7,873 CASES; 13,382 RECIPIENTS; \$1,495,951.

	CURRENT MO. CASES	CURRENT MO. RECIP.	CURRENT MO. DOLLARS	PRIOR MO. CASES	PRIOR MO. RECIP.	PRIOR MO. DOLLARS
PASQUA/YAQUI	248	711	\$73,486	19	55	\$4,372
WM APACHE	0	0	\$0	0	0	\$0
SALT RIVER	93	291	\$26,811	5	15	\$903
SAN CARLOS	482	1,040	\$121,325	17	44	\$3,636
HOPI	118	332	\$26,703	5	17	\$834
TOTAL	941	2,374	\$248,325	46	131	\$9,745

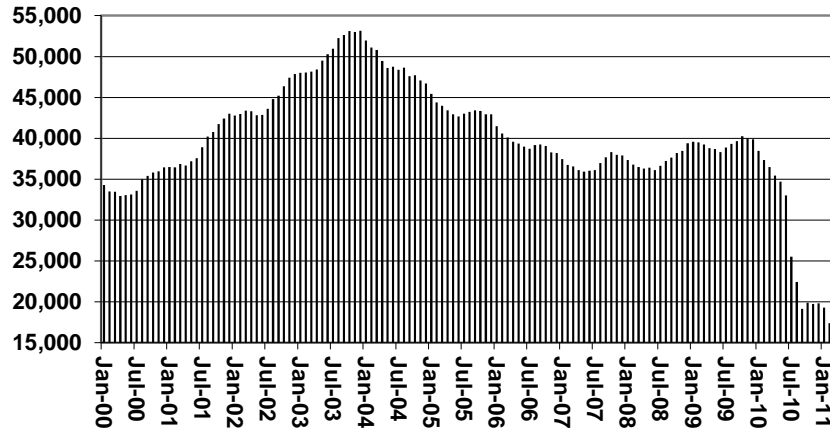
TANF SUMMARY

TABLES 1, 1A, 1B, & 1C

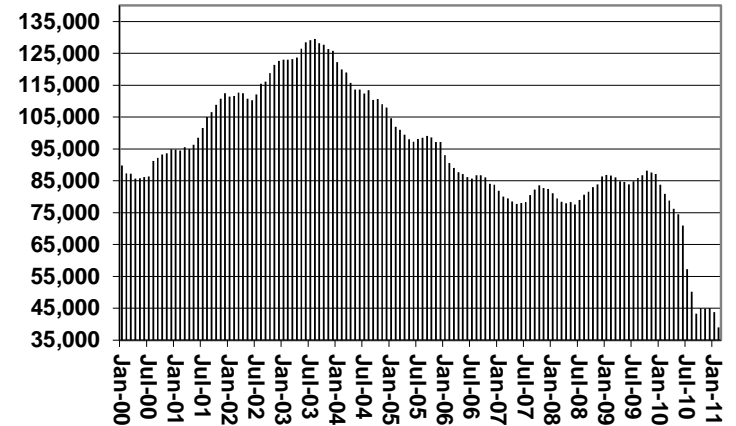
COMPARISON OF CASES, RECIPIENTS, PAYMENTS & AVERAGE PAYMENTS

FOR 2000, 2001, 2002, 2003, 2004, 2005, 2006, 2007, 2008, 2009, 2010, & 2011

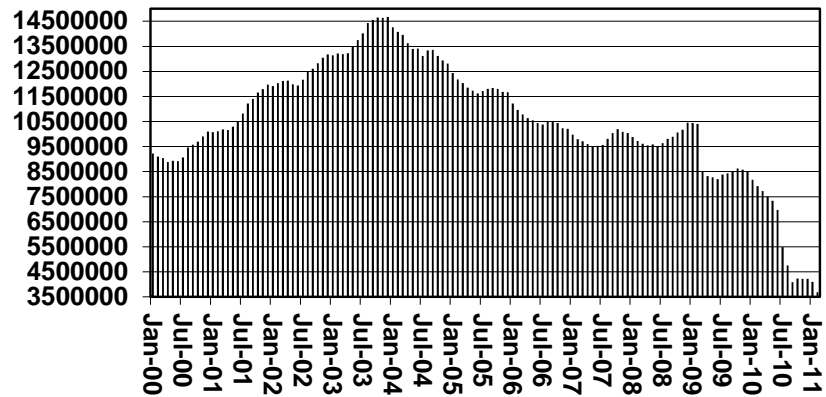
Cases



Recipients



Payments



Average Payments Per Recipient

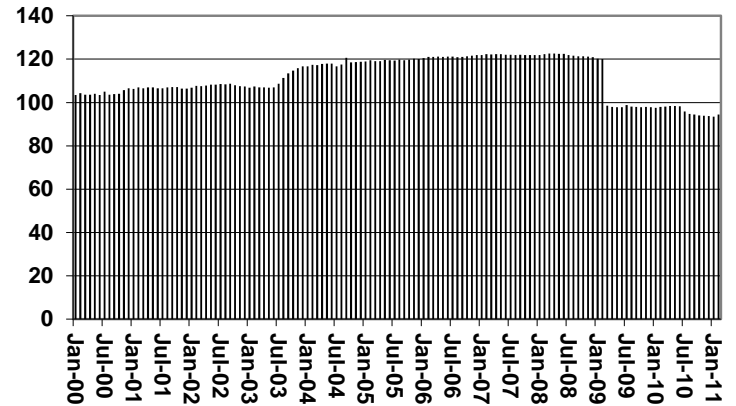


TABLE 1
CASH ASSISTANCE: ARIZONA 1/

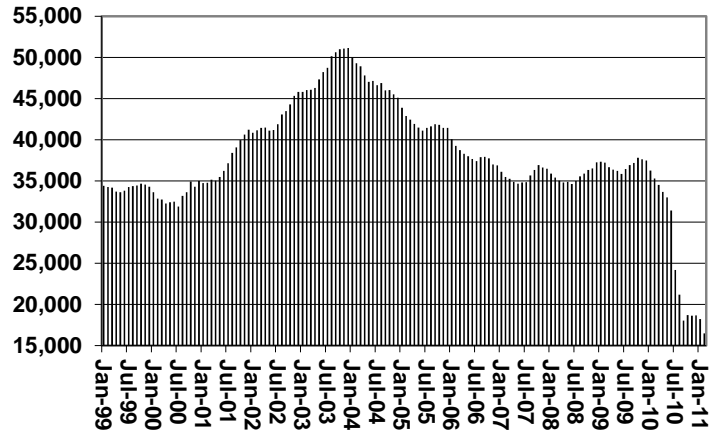
	FEBRUARY 2011							CHANGE FROM			FEBRUARY 2010			
	FAMILIES (CASES)	(RECIP.)	ADULTS	CHILDREN	TOTAL PAYMENTS	AVERAGE PAYMENT/ CASE	AVERAGE PAYMENT/ RECIP.	JANUARY 2011			FEBRUARY 2010			
								FAMILIES (CASES)	PERSONS (RECIP.)	TOTAL PAYMENTS	FAMILIES (CASES)	PERSONS (RECIP.)	TOTAL PAYMENTS	
ARIZONA	17,694	39,339	10,310	29,029	3,779,981	213.63	96.09	(520)	(1,317)	(119,823)	(17,594)	(35,765)	(3,762,531)	
REGION														
MARICOPA	10,914	24,885	6,463	18,422	2,336,977	214.13	93.91	(337)	(826)	(75,735)	(10,681)	(21,837)	(2,243,623)	
NORTHERN	982	2,125	566	1,559	204,544	208.29	96.26	(19)	(53)	(4,918)	(1,751)	(4,221)	(461,358)	
APACHE	35	62	16	46	6,557	187.34	105.76	0	(4)	(164)	34	59	6,279	
COCONINO	75	182	41	141	16,611	221.48	91.27	0	8	183	(129)	(250)	(25,402)	
MOHAVE	566	1,158	315	843	116,941	206.61	100.99	0	3	49	(513)	(984)	(106,531)	
NAVAJO	306	723	194	529	64,435	210.57	89.12	(19)	(60)	(4,986)	(1,143)	(3,046)	(335,704)	
CENTRAL	2,047	4,381	1,157	3,224	440,561	215.22	100.56	(56)	(171)	(14,140)	(1,197)	(2,530)	(257,616)	
GILA	460	987	367	620	113,361	246.44	114.85	(31)	(87)	(7,960)	(250)	(512)	(58,694)	
LA PAZ	71	145	36	109	13,931	196.21	96.08	4	8	870	(89)	(183)	(18,275)	
PINAL	835	1,781	418	1,363	170,362	204.03	95.66	(29)	(92)	(7,050)	(858)	(1,835)	(180,647)	
YAVAPAI	265	523	117	406	52,773	199.14	100.90	5	15	270	(345)	(639)	(68,044)	
YUMA	416	945	219	726	90,134	216.67	95.38	(34)	(77)	(7,031)	(427)	(832)	(87,448)	
SOUTHERN	3,751	7,948	2,124	5,824	797,899	212.72	100.39	(79)	(205)	(18,269)	(3,193)	(5,706)	(644,442)	
COCHISE	324	632	142	490	67,091	207.07	106.16	(7)	(12)	(985)	(413)	(798)	(85,683)	
GRAHAM	229	450	149	301	52,498	229.25	116.66	3	10	262	(21)	(9)	(3,953)	
GREENLEE	18	43	13	30	3,748	208.22	87.16	2	6	187	(2)	4	(348)	
PIMA	3,082	6,616	1,781	4,835	654,035	212.21	98.86	(72)	(208)	(17,455)	(2,635)	(4,685)	(530,172)	
SANTA CRUZ	98	207	39	168	20,527	209.46	99.16	(5)	(1)	(278)	(122)	(218)	(24,286)	
1/EXCLUDES: PRIOR MONTH NET TOTALS OF: 571 CASES; 1,418 RECIPIENTS; \$161,055. GRANT DIVERSION TOTALS OF: 1,445 CASES; \$1,077,038. ZERO PAY TOTALS OF 3,406 CASES; 9,955 RECIPIENTS.														
								CURRENT MO. CASES	CURRENT MO. RECIP.	CURRENT MO. DOLLARS	PRIOR MO. CASES	PRIOR MO. RECIP.	PRIOR MO. DOLLARS	
PASQUAY/AQUI								241	679	\$70,875	16	41	\$2,855	
WM APACHE								0	0	\$0	0	0	\$0	
SALT RIVER								93	291	\$26,811	5	15	\$903	
SAN CARLOS								482	1,040	\$121,325	17	44	\$3,636	
HOPI								118	332	\$26,703	5	17	\$834	
CASES WITH GRANT UNDER \$100 (SEE TABLE 1B).								TOTAL	934	2,342	\$245,714	43	117	\$8,228

CHART 1

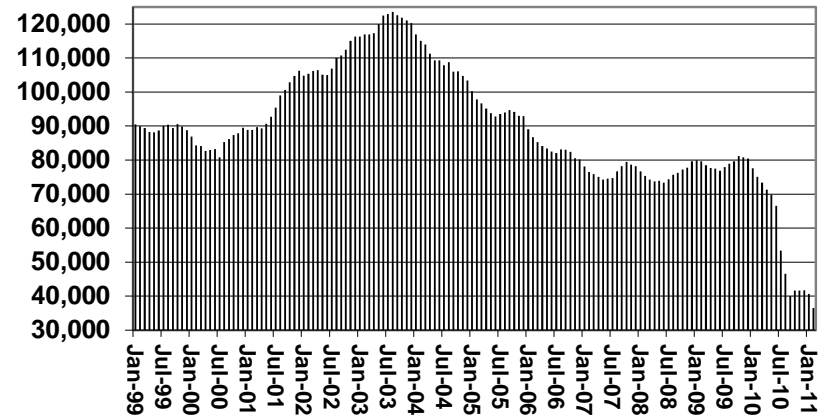
CASH ASSISTANCE PROGRAM

COMPARISON OF CASES, RECIPIENTS, PAYMENTS & AVERAGE PAYMENTS FOR 1999, 2000, 2001, 2002, 2003, 2004, 2005, 2006, 2007, 2008, 2009, 2010, & 2011

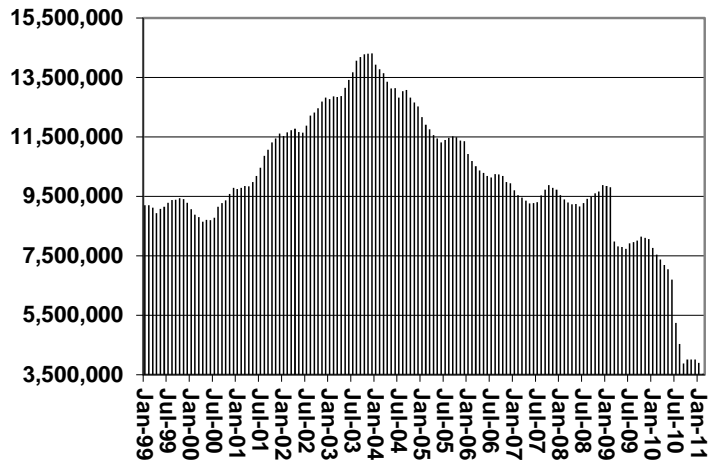
Cases



Recipients



Payments



Average Payment Per Recipient

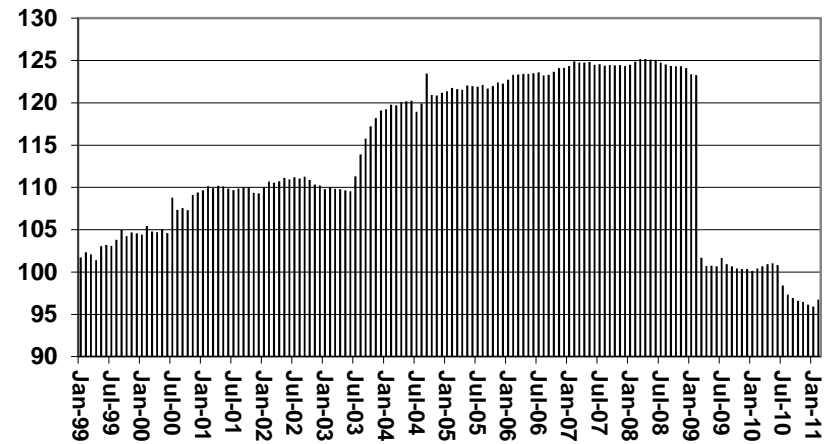


TABLE 1A
CA-UP

CASH ASSISTANCE UNEMPLOYED PARENT PROGRAM: ARIZONA 1/

	FEBRUARY 2011							CHANGE FROM			FEBRUARY 2010		
	FAMILIES (CASES)	PERSONS (RECIP.)	ADULTS	CHILDREN	TOTAL PAYMENTS	AVERAGE PAYMENT/ CASE	AVERAGE PAYMENT/ RECIP.	FAMILIES (CASES)	PERSONS (RECIP.)	TOTAL PAYMENTS	FAMILIES (CASES)	PERSONS (RECIP.)	TOTAL PAYMENTS
ARIZONA	549	1,980	815	1,165	152,543	277.86	77.04	(26)	(102)	(7,843)	(597)	(2,008)	(168,223)
REGION													
MARICOPA	355	1,290	487	803	99,913	281.45	77.45	(18)	(77)	(6,772)	(451)	(1,427)	(121,704)
NORTHERN	25	91	48	43	6,963	278.52	76.52	(1)	1	520	(18)	(79)	(6,556)
APACHE	1	3	2	1	556	556.00	185.33	1	3	556	(1)	(8)	(77)
COCONINO	2	10	4	6	571	285.50	57.10	1	6	236	1	6	236
MOHAVE	17	60	32	28	4,517	265.71	75.28	(6)	(20)	(1,256)	(5)	(28)	(2,301)
NAVAJO	5	18	10	8	1,319	263.80	73.28	3	12	984	(13)	(49)	(4,414)
CENTRAL	44	157	67	90	11,540	262.27	73.50	(2)	(14)	(770)	(37)	(142)	(10,099)
GILA	0	0	0	0	0	0.00	0.00	(1)	(4)	(211)	(6)	(18)	(1,219)
LA PAZ	1	6	2	4	449	449.00	74.83	(3)	(15)	(865)	(1)	0	133
PINAL	30	102	42	60	7,556	251.87	74.08	2	5	306	(30)	(124)	(9,013)
YAVAPAI	6	23	9	14	1,696	282.67	73.74	0	3	(63)	(2)	(4)	(291)
YUMA	7	26	14	12	1,839	262.71	70.73	(1)	(3)	(319)	(12)	(50)	(3,801)
SOUTHERN	125	442	213	229	34,127	273.02	77.21	(4)	(12)	(439)	(77)	(306)	(25,772)
COCHISE	6	20	8	12	1,480	246.67	74.00	2	5	450	(6)	(15)	(1,218)
GRAHAM	2	8	3	5	670	0.00	0.00	1	3	278	(1)	(1)	(61)
GREENLEE	0	0	0	0	0	0.00	0.00	0	0	0	(2)	(7)	(613)
PIMA	114	399	199	200	30,801	270.18	77.20	(9)	(34)	(2,201)	(68)	(287)	(24,232)
SANTA CRUZ	3	15	3	12	1,176	392.00	0.00	2	14	1,034	0	4	352

1/EXCLUDES: PRIOR MONTH NET TOTALS OF: 70 CASES; 288 RECIPIENTS; \$25,226.
GRANT DIVERSION TOTALS OF: 0 CASES; \$0.
ZERO PAY TOTALS OF 12 CASES; 59 RECIPIENTS.

	CURRENT MO. CASES	CURRENT MO. RECIP.	CURRENT MO. DOLLARS	PRIOR MO. CASES	PRIOR MO. RECIP.	PRIOR MO. DOLLARS
PASQUAYYAQUI	7	32	\$2,611	3	14	\$1,517
WM APACHE	0	0	\$0	0	0	\$0
SALT RIVER	0	0	\$0	0	0	\$0
SAN CARLOS	0	0	\$0	0	0	\$0
HOPI	0	0	\$0	0	0	\$0
TOTAL	7	32	\$2,611	3	14	\$1,517

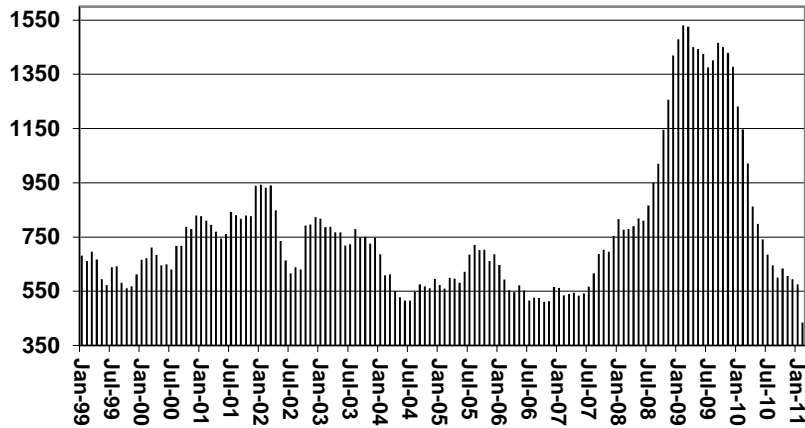
CASES WITH GRANT UNDER \$100 (SEE TABLE 1C).

CHART 1A

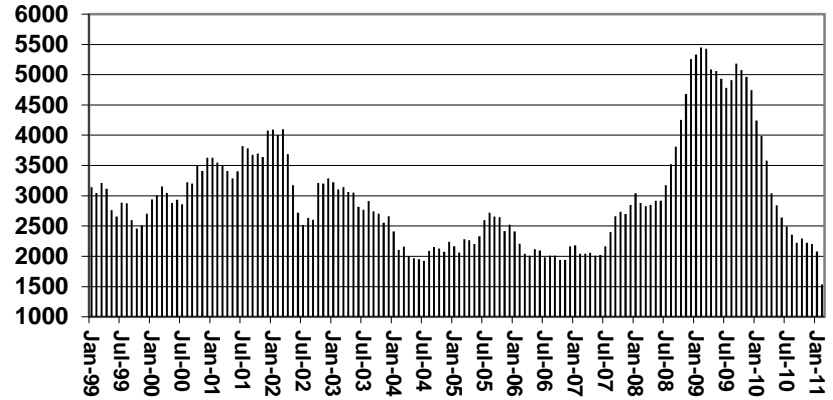
CASH ASSISTANCE UNEMPLOYED PARENT PROGRAM

COMPARISON OF CASES, RECIPIENTS, PAYMENTS & AVERAGE PAYMENTS FOR 1999, 2000, 2001, 2002, 2003, 2004, 2005, 2006, 2007, 2008, 2009, 2010, & 2011

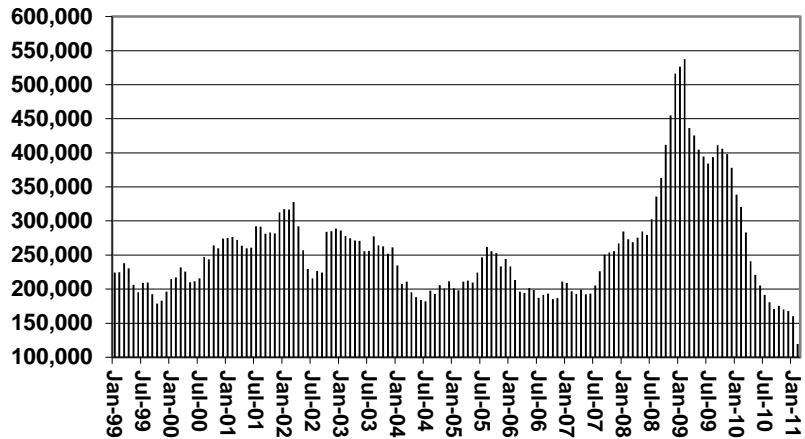
Cases



Recipients



Payments



Average Payment Per Recipient

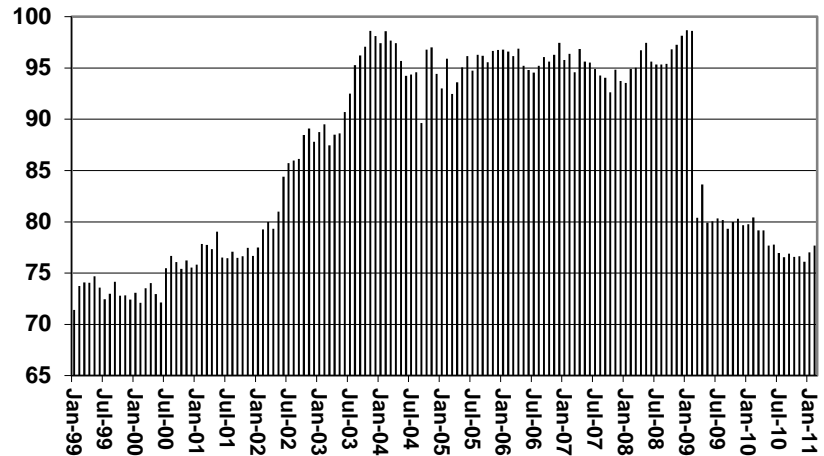


TABLE 1B 1/

CASH ASSISTANCE: ARIZONA
CASES WITH GRANT UNDER \$100

CHANGE FROM

	FEBRUARY 2011							JANUARY 2011			FEBRUARY 2010		
	FAMILIES (CASES)	PERSONS (RECIP.)	ADULTS	CHILDREN	TOTAL PAYMENTS	AVERAGE PAYMENT/ CASE	AVERAGE PAYMENT/ RECIP.	FAMILIES (CASES)	PERSONS (RECIP.)	TOTAL PAYMENTS	FAMILIES (CASES)	PERSONS (RECIP.)	TOTAL PAYMENTS
ARIZONA	457	957	236	721	34,673	75.87	36.23	(21)	(27)	155	(402)	(754)	(26,535)
REGION													
MARICOPA	288	614	140	474	21,368	74.19	34.80	2	11	1,146	(271)	(531)	(17,462)
NORTHERN	18	37	12	25	1,706	94.78	46.11	(5)	(12)	(49)	(32)	(67)	(1,721)
APACHE	1	4	1	3	92	92.00	23.00	0	(1)	(39)	1	4	92
COCONINO	1	2	1	1	92	92.00	46.00	(2)	(3)	(221)	(3)	(7)	(286)
MOHAVE	9	17	5	12	957	106.33	56.29	(8)	(17)	(189)	(27)	(61)	(1,520)
NAVAJO	7	14	5	9	565	80.71	40.36	5	9	400	(3)	(3)	(7)
CENTRAL	44	82	22	60	3,221	73.20	39.28	(7)	(17)	(707)	(37)	(60)	(2,869)
GILA	2	4	1	3	311	155.50	77.75	(1)	(3)	46	(10)	(11)	(420)
LA PAZ	3	6	2	4	161	53.67	26.83	(3)	(7)	(200)	(3)	(2)	(343)
PINAL	21	39	10	29	1,705	81.19	43.72	(1)	(1)	(238)	(14)	(22)	(1,192)
YAVAPAI	8	13	3	10	427	53.38	32.85	(4)	(12)	(416)	(4)	(5)	(351)
YUMA	10	20	6	14	617	61.70	30.85	2	6	101	(6)	(20)	(563)
SOUTHERN	107	224	62	162	8,378	78.30	37.40	(11)	(9)	(235)	(62)	(96)	(4,483)
COCHISE	12	19	4	15	896	74.67	47.16	2	(1)	190	(7)	(10)	(606)
GRAHAM	4	7	3	4	215	53.75	30.71	2	3	83	(1)	1	(205)
GREENLEE	1	2	1	1	45	45.00	22.50	0	0	(81)	1	2	45
PIMA	85	184	52	132	6,821	80.25	37.07	(16)	(11)	(484)	(57)	(93)	(3,916)
SANTA CRUZ	5	12	2	10	401	80.20	33.42	1	0	57	2	4	199

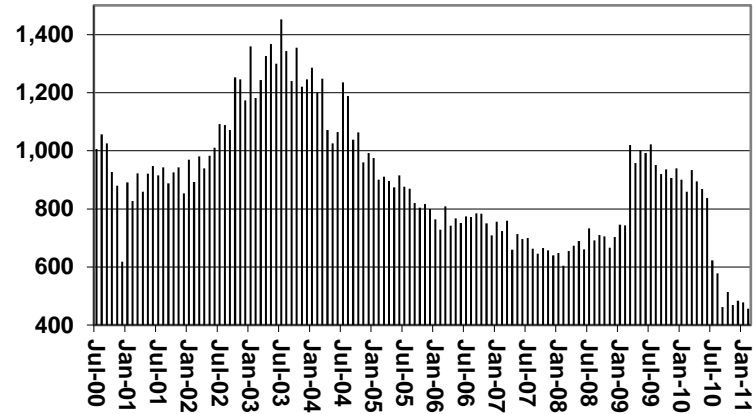
EXCLUDES: PRIOR MONTH NET TOTALS OF 388 CASES; 832 RECIPIENTS; \$28,238.

CHART 1B

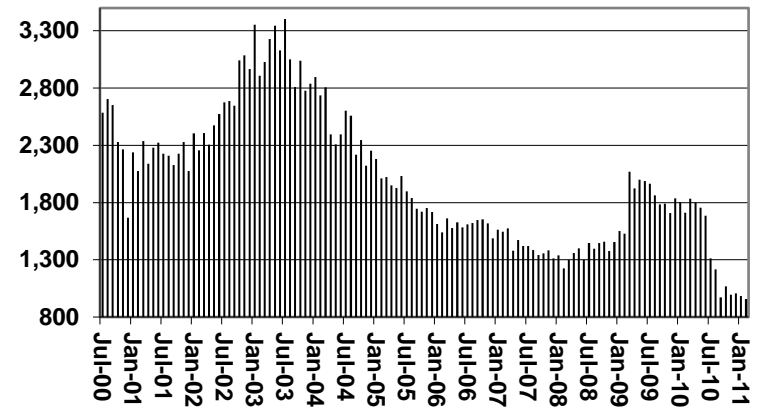
CASH ASSISTANCE PROGRAM CASES WITH GRANT UNDER \$100

FOR 1999, 2000, 2001, 2002, 2003, 2004, 2005, 2006, 2007, 2008, 2009, 2010, & 2011

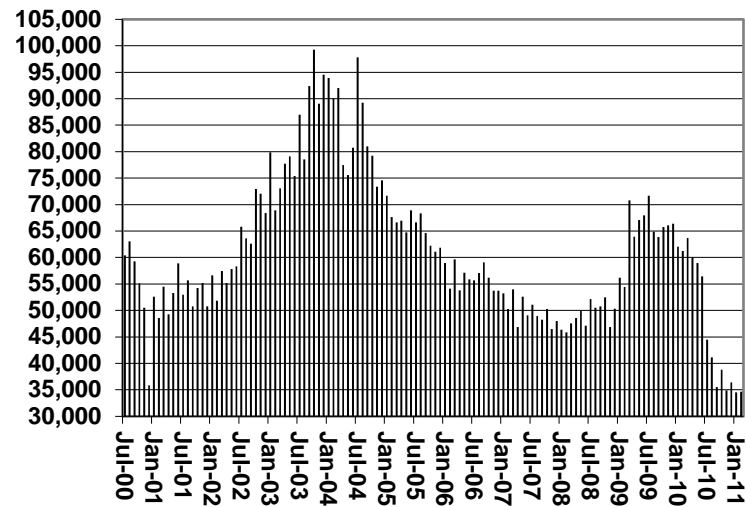
Cases



Recipients



Payments



Average Payment Per Recipient

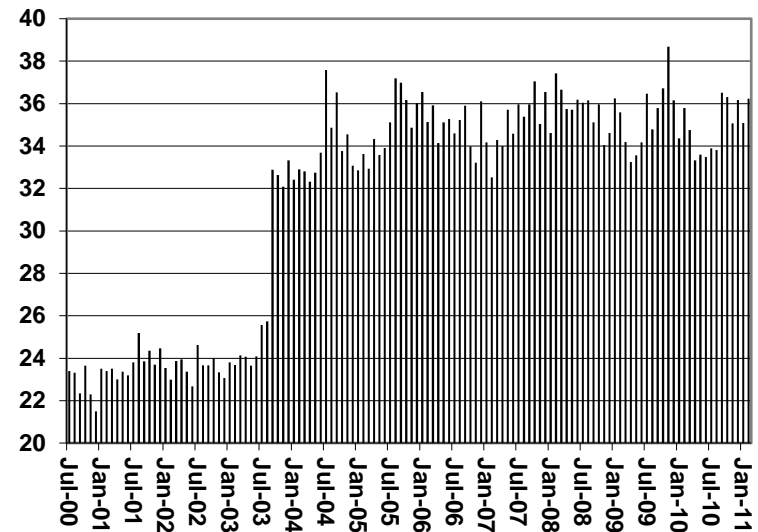


TABLE 1C 1/

CASH ASSISTANCE UNEMPLOYED PARENT PROGRAM: ARIZONA
 CASES WITH GRANT UNDER \$100

	FEBRUARY 2011								CHANGE FROM			FEBRUARY 2010		
									JANUARY 2011					
	FAMILIES (CASES)	PERSONS (RECIP.)	ADULTS	CHILDREN	TOTAL PAYMENTS	AVERAGE PAYMENT/ CASE	AVERAGE PAYMENT/ RECIP.		FAMILIES (CASES)	PERSONS (RECIP.)	TOTAL PAYMENTS	FAMILIES (CASES)	PERSONS (RECIP.)	TOTAL PAYMENTS
ARIZONA	23	60	12	48	1,425	61.96	23.75	(6)	(18)	(313)	(14)	(47)	(738)	
REGION														
MARICOPA	22	57	10	47	1,356	61.64	23.79	(4)	(8)	(195)	(11)	(39)	(539)	
NORTHERN	0	0	0	0	0	0.00	0.00	0	0	0	(1)	(3)	(73)	
APACHE	0	0	0	0	0	0.00	0.00	0	0	0	0	0	0	
COCONINO	0	0	0	0	0	0.00	0.00	0	0	0	0	0	0	
MOHAVE	0	0	0	0	0	0.00	0.00	0	0	0	0	0	0	
NAVAJO	0	0	0	0	0	0.00	0.00	0	0	0	(1)	(3)	(73)	
CENTRAL	0	0	0	0	0	0.00	0.00	(2)	(6)	(77)	(2)	(6)	(132)	
GILA	0	0	0	0	0	0.00	0.00	0	0	0	0	0	0	
LA PAZ	0	0	0	0	0	0.00	0.00	0	0	0	0	0	0	
PINAL	0	0	0	0	0	0.00	0.00	(1)	(3)	(48)	(1)	(4)	(42)	
YAVAPAI	0	0	0	0	0	0.00	0.00	0	0	0	(1)	(2)	(90)	
YUMA	0	0	0	0	0	0.00	0.00	(1)	(3)	(29)	0	0	0	
SOUTHERN	1	3	2	1	69	69.00	23.00	0	(4)	(41)	0	1	6	
COCHISE	0	0	0	0	0	0.00	0.00	0	0	0	0	0	0	
GRAHAM	0	0	0	0	0	0.00	0.00	0	0	0	0	0	0	
GREENLEE	0	0	0	0	0	0.00	0.00	0	0	0	0	0	0	
PIMA	1	3	2	1	69	69.00	23.00	0	(4)	(41)	0	1	6	
SANTA CRUZ	0	0	0	0	0	0.00	0.00	0	0	0	0	0	0	

EXCLUDES: PRIOR MONTH NET TOTALS OF 18 CASES; 57 RECIPIENTS; \$1,308.

CHART 1C

CASH ASSISTANCE UNEMPLOYED PARENT PROGRAM

CASES WITH GRANT UNDER \$100

FOR 1999, 2000, 2001, 2002, 2003, 2004, 2005, 2006, 2007, 2008, 2009, 2010, & 2011

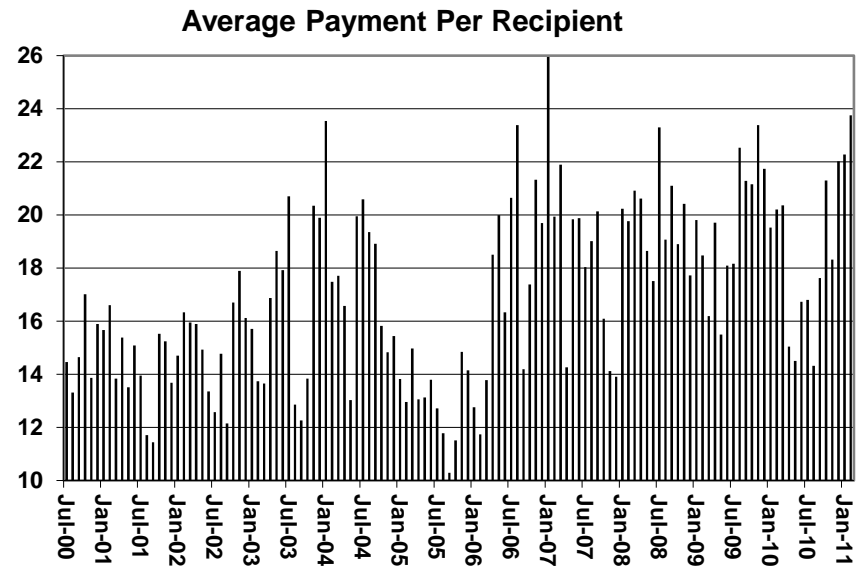
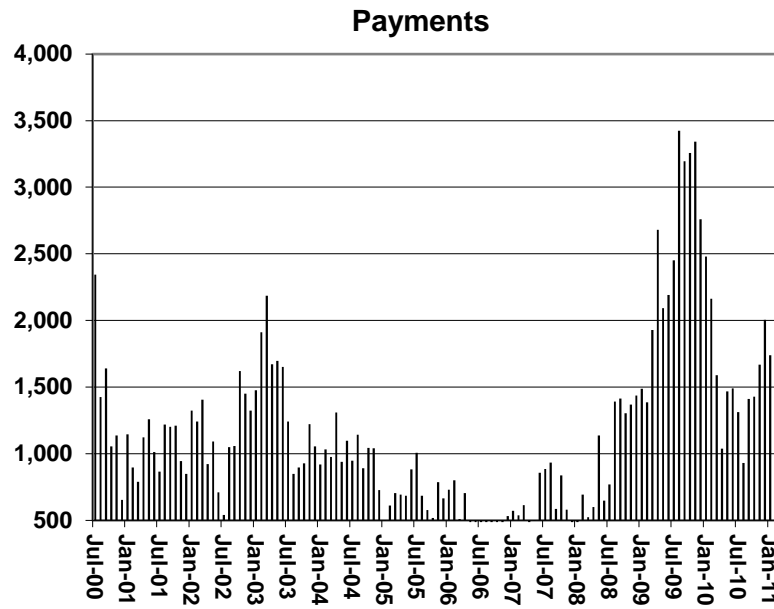
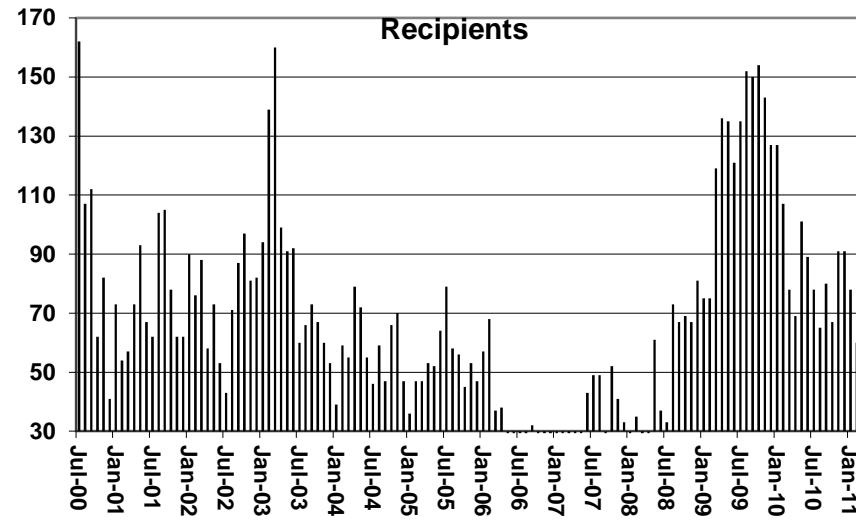
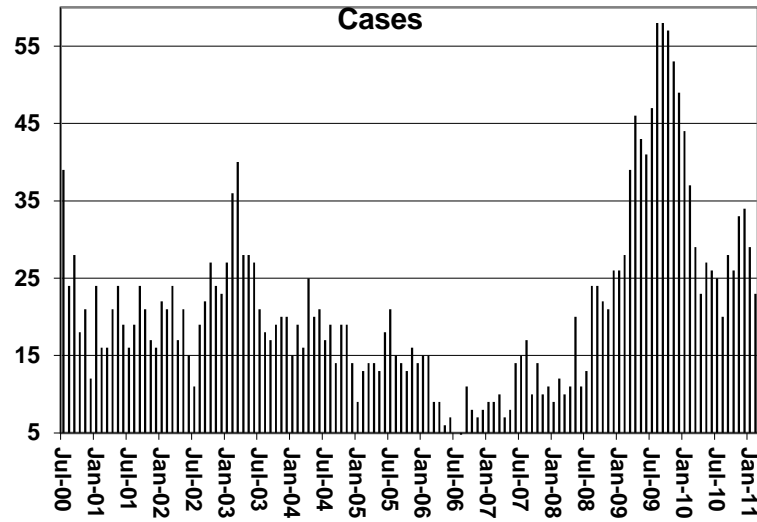


TABLE 4
TUBERCULOSIS CONTROL: ARIZONA 1/

	FEBRUARY 2011					CHANGE FROM			FEBRUARY 2010		
						JANUARY 2011					
	NUMBER OF CASES	PERSONS (RECIP.)	TOTAL PAYMENTS	AVERAGE PAYMENT/ CASE	AVERAGE PAYMENT/ RECIP.	NUMBER OF CASES	PERSONS (RECIP.)	TOTAL PAYMENTS	NUMBER OF CASES	PERSONS (RECIP.)	TOTAL PAYMENTS
ARIZONA	3	3	389	129.67	129.67	1	1	108	2	2	216
REGION											
MARICOPA	3	3	389	129.67	129.67	1	1	108	2	2	216
NORTHERN	0	0	0	0.00	0.00	0	0	0	0	0	0
APACHE	0	0	0	0.00	0.00	0	0	0	0	0	0
COCONINO	0	0	0	0.00	0.00	0	0	0	0	0	0
MOHAVE	0	0	0	0.00	0.00	0	0	0	0	0	0
NAVAJO	0	0	0	0.00	0.00	0	0	0	0	0	0
CENTRAL	0	0	0	0.00	0.00	0	0	0	0	0	0
GILA	0	0	0	0.00	0.00	0	0	0	0	0	0
LA PAZ	0	0	0	0.00	0.00	0	0	0	0	0	0
PINAL	0	0	0	0.00	0.00	0	0	0	0	0	0
YAVAPAI	0	0	0	0.00	0.00	0	0	0	0	0	0
YUMA	0	0	0	0.00	0.00	0	0	0	0	0	0
SOUTHERN	0	0	0	0.00	0.00	0	0	0	0	0	0
COCHISE	0	0	0	0.00	0.00	0	0	0	0	0	0
GRAHAM	0	0	0	0.00	0.00	0	0	0	0	0	0
GREENLEE	0	0	0	0.00	0.00	0	0	0	0	0	0
PIMA	0	0	0	0.00	0.00	0	0	0	0	0	0
SANTA CRUZ	0	0	0	0.00	0.00	0	0	0	0	0	0

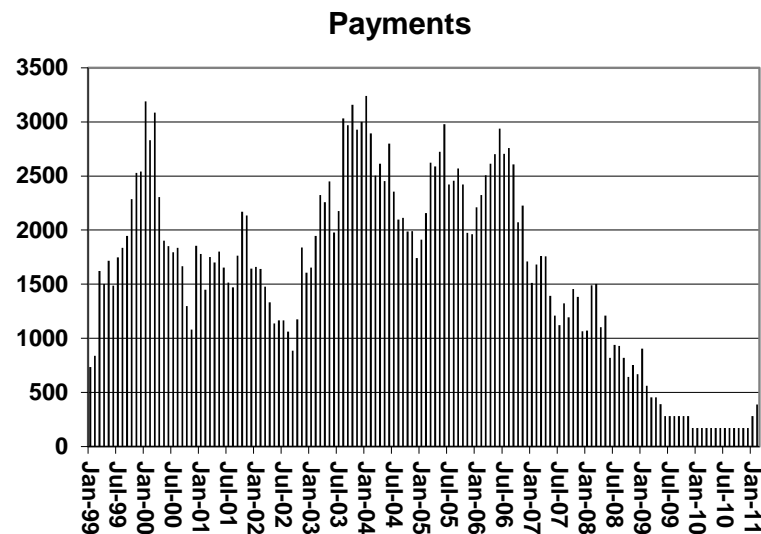
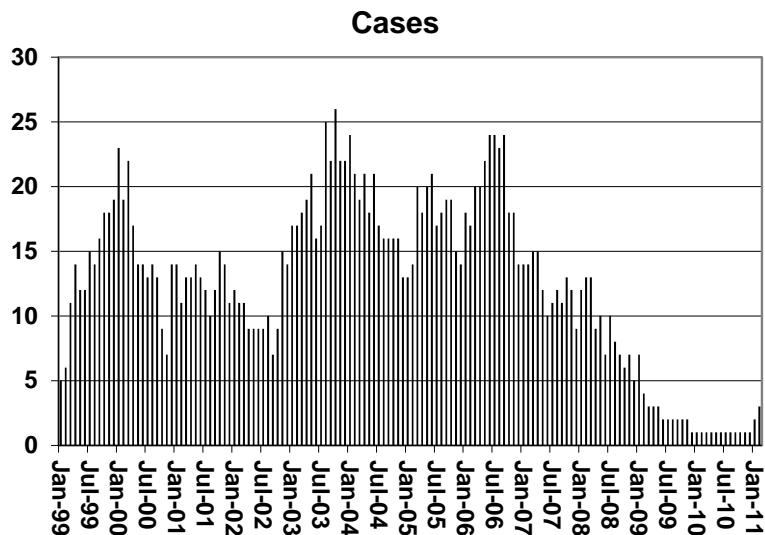
1/EXCLUDES: PRIOR MONTH NET TOTALS OF : 0 CASES; 0 RECIPIENTS; \$0.

CHART 4

TUBERCULOSIS CONTROL PROGRAM

COMPARISON OF CASES, PAYMENTS & AVERAGE PAYMENTS

FOR 1999, 2000, 2001, 2002, 2003, 2004, 2005, 2006, 2007, 2008, 2009, 2010, & 2011



Average Payment Per Case

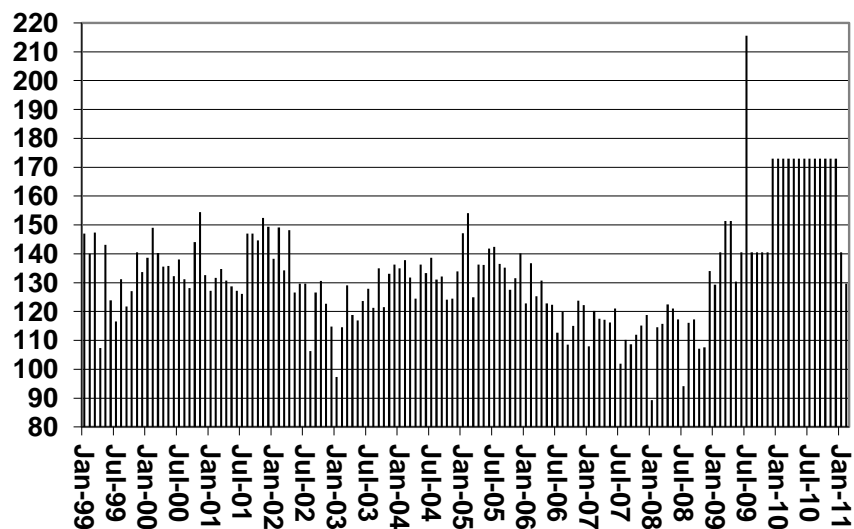


TABLE 6
SUPPLEMENTAL NUTRITION ASSISTANCE PROGRAM: ARIZONA 1/

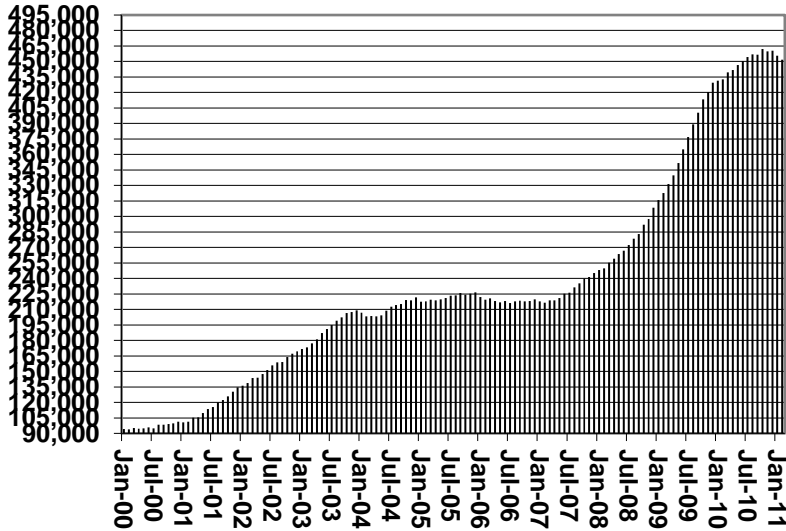
	CHANGE FROM												
	FEBRUARY 2011							JANUARY 2011			FEBRUARY 2010		
	HOUSEHOLDS	PERSONS	ADULTS	CHILDREN	TOTAL PAYMENTS ISSUANCE	AVERAGE PAYMT./ HOUSEHOLD	AVERAGE PAYMT./ PERSON	HOUSEHOLDS	PERSONS	TOTAL PAYMENTS ISSUANCE	HOUSEHOLDS	PERSONS	TOTAL PAYMENTS ISSUANCE
ARIZONA	451,547	1,030,139	533,011	497,128	131,039,221	290.20	127.21	(4,048)	(9,187)	(1,365,779)	18,941	24,134	3,546,464
REGION													
MARICOPA	240,786	553,129	268,238	284,891	70,785,753	293.98	127.97	(2,739)	(5,870)	(799,935)	4,268	2,005	478,537
NORTHERN	52,510	126,756	71,309	55,447	15,900,540	302.81	125.44	(306)	(542)	(48,107)	2,563	2,551	440,609
APACHE	9,907	27,280	14,768	12,512	3,384,931	341.67	124.08	(66)	(149)	(2,125)	476	26	53,832
COCONINO	9,448	23,294	12,404	10,890	2,894,573	306.37	124.26	(36)	50	13,782	250	192	6,446
MOHAVE	20,203	42,546	25,670	16,876	5,407,252	267.65	127.09	(128)	(232)	(35,421)	1,153	1,656	243,476
NAVAJO	12,952	33,636	18,467	15,169	4,213,784	325.34	125.28	(76)	(211)	(24,343)	684	677	136,855
CENTRAL	59,278	137,733	75,072	62,661	17,096,282	288.41	124.13	(684)	(1,911)	(353,344)	4,460	7,958	1,045,386
GILA	6,068	13,073	7,717	5,356	1,711,034	281.98	130.88	(35)	(126)	(18,677)	554	893	127,311
LA PAZ	2,011	4,091	2,363	1,728	531,928	264.51	130.02	(30)	(29)	(7,622)	147	247	37,564
PINAL	21,547	52,560	27,316	25,244	6,703,109	311.09	127.53	(39)	(122)	(52,577)	1,812	3,561	482,665
YAVAPAI	14,759	29,761	17,934	11,827	3,707,768	251.22	124.58	(36)	31	3,776	1,097	1,802	206,953
YUMA	14,893	38,248	19,742	18,506	4,442,443	298.29	116.15	(544)	(1,665)	(278,244)	850	1,455	190,893
SOUTHERN	98,973	212,521	118,392	94,129	27,256,646	275.39	128.25	(319)	(864)	(164,393)	7,650	11,620	1,581,932
COCHISE	10,504	22,551	12,872	9,679	2,820,749	268.54	125.08	52	9	4,631	647	1,012	137,172
GRAHAM	3,431	7,878	4,417	3,461	1,014,959	295.82	128.83	(21)	(79)	(9,681)	191	95	56,774
GREENLEE	491	1,082	609	473	135,366	275.69	125.11	3	18	2,196	(41)	(153)	(12,228)
PIMA	80,134	169,284	94,569	74,715	21,888,692	273.15	129.30	(326)	(753)	(146,060)	6,504	9,927	1,290,210
SANTA CRUZ	4,413	11,726	5,925	5,801	1,396,880	316.54	119.13	(27)	(59)	(15,479)	349	739	110,004

1/EXCLUDES: PRIOR MONTH NET TOTALS OF : 14,517 CASES; 33,989 RECIPIENTS; \$3,083,331.
 AGED CANCELATIONS: 9,992 CASES; 12,636 RECIPIENTS; \$625,364.
 SNAP CONVERSIONS: 0 CASES; 0 RECIPIENTS; \$0.
 SNAP CHILD ONLY: 57,164 CASES; 134,958 RECIPIENTS; \$20,488,133.
 SNAP ZERO PAY: 12,529 CASES; 51,524 RECIPIENTS.

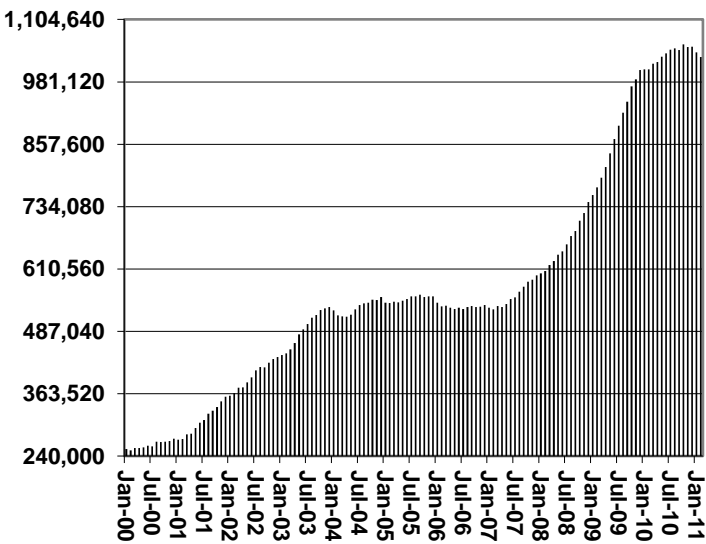
CHART 6

SUPPLEMENTAL NUTRITION ASSISTANCE PROGRAM (SNAP) COMPARISON OF HOUSEHOLDS, RECIPIENTS, PAYMENTS & AVERAGE PAYMENTS FOR 1999, 2000, 2001, 2002, 2003, 2004, 2005, 2006, 2007, 2008, 2009, 2010, & 2011

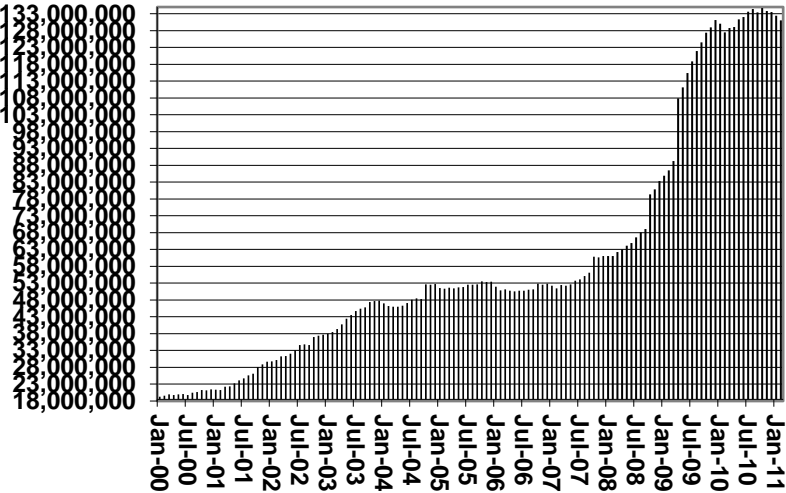
Households



Recipients



Payments



Average Payment Per Household

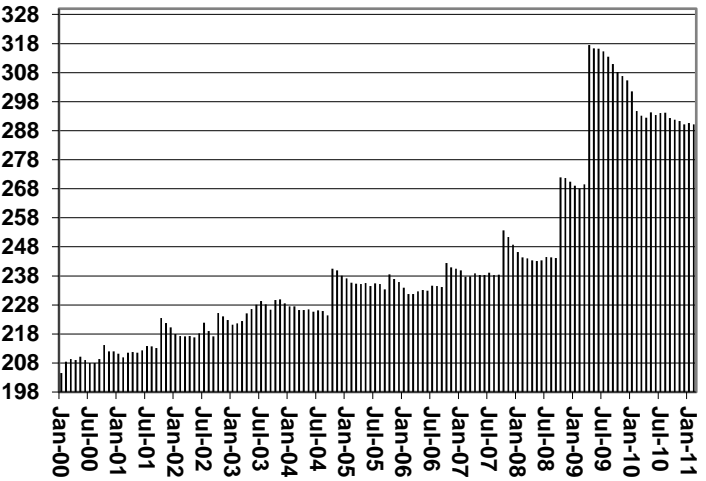


TABLE 7A
MEDICAL ASSISTANCE PROGRAM
RECIPIENTS
FEBRUARY 2011

	SOBRA WOMAN 133% FPL	SOBRA CHILD	ADULT W/O CHILD 100% FPL	FOSTER CARE	1931 36% FPL	FEDERAL EMERGENCY SERVICES	INFANTS	ADULT W/O CHILD 40% FPL	MEDICAL W/SPEND DOWN	SOBRA WOMAN 100% FPL	SOBRA CHILD 100% FPL	TRANSITIONAL MEDICAL T1 - T4	1931 100% FPL	YATI	OTHER	TOTAL CASES
ARIZONA	10,470	69,737	63,776	12,525	333,861	50,017	45,825	172,635	7,151	3,719	228,961	46,308	124,511	344	28,795	1,198,635
REGION																
MARICOPA	5,537	39,795	31,365	6,745	185,208	38,776	27,318	87,465	3,933	1,900	134,132	22,339	64,770	193	14,835	664,311
NORTHERN	1,230	7,596	7,698	649	43,950	1,119	4,655	25,707	909	526	23,185	5,230	14,881	17	3,104	140,456
APACHE	208	1,502	1,064	35	11,513	80	923	5,856	139	110	4,146	923	2,648	0	417	29,564
COCONINO	306	1,473	1,687	127	8,439	415	1,057	4,634	122	100	4,783	1,165	3,016	12	452	27,788
MOHAVE	374	2,325	3,094	340	11,673	412	1,417	8,197	458	168	8,336	1,882	5,333	3	1,633	45,645
NAVAJO	342	2,296	1,853	147	12,325	212	1,258	7,020	190	148	5,920	1,260	3,884	2	602	37,459
CENTRAL	1,682	9,339	9,639	1,482	42,407	3,717	5,948	22,385	1,065	566	28,983	8,561	18,432	42	4,396	158,644
GILA	116	673	813	99	4,567	122	511	2,690	128	35	2,015	428	1,357	2	367	13,923
LA PAZ	29	261	277	17	1,287	133	149	852	21	13	717	154	422	0	163	4,495
PINAL	591	4,112	2,899	581	18,206	1,195	2,212	8,659	348	180	10,610	2,253	6,232	18	1,330	59,426
YAVAPAI	412	1,732	2,802	487	7,367	1,171	1,128	5,281	289	131	6,335	1,615	4,215	19	1,220	34,204
YUMA	534	2,561	2,848	298	10,980	1,096	1,948	4,903	279	207	9,306	4,111	6,206	3	1,316	46,596
SOUTHERN	2,021	13,007	15,074	3,649	62,296	6,405	7,904	37,078	1,244	727	42,661	10,178	26,428	92	6,460	235,224
COCHISE	231	1,300	1,829	242	6,866	451	796	3,363	161	87	4,386	968	2,841	4	929	24,454
GRAHAM	113	480	498	68	2,759	24	339	1,489	64	20	1,421	403	901	2	168	8,749
GREENLEE	13	53	60	8	429	3	47	221	5	8	236	65	108	2	34	1,292
PIMA	1,554	10,518	11,751	3,301	48,793	5,488	6,271	30,806	935	567	33,489	8,109	20,611	83	4,857	187,133
SANTA CRUZ	110	656	936	30	3,449	439	451	1,199	79	45	3,129	633	1,967	1	472	13,596

TABLE 7B
MEDICAL ASSISTANCE PROGRAM
RECIPIENTS

CHANGE FROM

JANUARY 2011

	SOBRA WOMAN 133% FPL	SOBRA CHILD	ADULT W/O CHILD 100% FPL	FOSTER CARE	1931 36% FPL	FEDERAL EMERGENCY SERVICES	INFANTS	ADULT W/O CHILD 40% FPL	MEDICAL W/SPEND DOWN	SOBRA WOMAN 100% FPL	SOBRA CHILD 100% FPL	TRANSITIONAL MEDICAL T1 - T4	1931 100% FPL	YATI	OTHER	TOTAL CASES
ARIZONA	(151)	(736)	(186)	(47)	(2,695)	(368)	(588)	(955)	72	54	(168)	346	(1,008)	2	226	(6,202)
REGION																
MARICOPA	(121)	(460)	(43)	27	(908)	(330)	(325)	(645)	123	29	110	(285)	(503)	10	97	(3,224)
NORTHERN	24	(82)	(32)	(15)	(195)	30	(103)	(190)	(2)	14	(167)	(405)	(95)	0	27	(1,191)
APACHE	15	(20)	(7)	(2)	(13)	1	(28)	(7)	(6)	6	(60)	(149)	(11)	0	4	(277)
COCONINO	12	(11)	(32)	(4)	(17)	23	(17)	(70)	(2)	2	(52)	(96)	(22)	(1)	8	(279)
MOHAVE	(4)	(37)	(7)	(3)	10	6	(19)	(83)	(1)	(4)	(73)	(42)	(32)	0	5	(284)
NAVAJO	1	(14)	14	(6)	(175)	0	(39)	(30)	7	10	18	(118)	(30)	1	10	(351)
CENTRAL	(6)	(77)	(107)	(7)	(1,036)	(88)	(52)	(156)	(23)	(6)	(154)	820	(321)	(6)	18	(1,201)
GILA	2	(14)	7	(1)	(23)	6	(9)	(6)	11	(4)	4	14	(25)	(1)	0	(39)
LA PAZ	(5)	(4)	8	0	(18)	0	(5)	(9)	(3)	(6)	(2)	(16)	(6)	0	2	(64)
PINAL	(3)	38	(18)	(9)	(117)	12	(25)	(5)	(20)	9	77	72	(12)	1	15	15
YAVAPAI	20	(37)	(33)	3	11	7	(27)	18	(5)	10	49	(15)	31	(5)	2	29
YUMA	(20)	(60)	(71)	0	(889)	(113)	14	(154)	(6)	(15)	(282)	765	(309)	(1)	(1)	(1,142)
SOUTHERN	(48)	(117)	(4)	(52)	(556)	20	(108)	36	(26)	17	43	216	(89)	(2)	84	(586)
COCHISE	(2)	16	35	(1)	(70)	9	(21)	9	7	4	18	(3)	6	0	4	11
GRAHAM	(3)	1	0	(2)	(5)	0	2	(2)	4	(5)	(18)	18	7	0	3	0
GREENLEE	(5)	(1)	3	1	(1)	0	(6)	0	0	3	1	(11)	0	0	2	(14)
PIMA	(45)	(94)	(58)	(48)	(456)	21	(95)	46	(29)	15	22	166	(57)	(2)	73	(541)
SANTA CRUZ	7	(39)	16	(2)	(24)	(10)	12	(17)	(8)	0	20	46	(45)	0	2	(42)

TABLE 7C
MEDICAL ASSISTANCE PROGRAM
RECIPIENTS

CHANGE FROM
FEBRUARY 2010

	SOBRA WOMAN 133% FPL	SOBRA CHILD	ADULT W/O CHILD 100% FPL	FOSTER CARE	1931 36% FPL	FEDERAL EMERGENCY SERVICES	INFANTS	ADULT W/O CHILD 40% FPL	MEDICAL W/SPEND DOWN	SOBRA WOMAN 100% FPL	SOBRA CHILD 100% FPL	TRANSITIONAL MEDICAL T1 - T4	3E 1931 100% FPL	YATI	OTHER	TOTAL CASES
ARIZONA	423	4,594	4,697	671	6,054	(23,892)	(4,189)	16,127	868	(143)	2,979	2,082	6,014	3	2,299	18,587
REGION																
MARICOPA	187	3,198	3,012	581	1,621	(19,093)	(2,611)	8,573	577	(143)	2,006	375	4,257	(18)	1,252	3,774
NORTHERN	39	379	168	25	1,357	(586)	(532)	1,918	48	26	(858)	423	(494)	(2)	309	2,220
APACHE	15	101	46	(10)	674	(42)	(86)	585	30	18	(589)	106	(394)	(1)	42	495
COCONINO	18	101	62	(5)	202	(49)	(70)	62	20	(21)	(297)	174	(72)	2	62	189
MOHAVE	(34)	143	48	32	363	(359)	(192)	764	(2)	20	74	189	123	(2)	175	1,342
NAVAJO	40	34	12	8	118	(136)	(184)	507	0	9	(46)	(46)	(151)	(1)	30	194
CENTRAL	125	257	580	18	1,797	(1,265)	(175)	1,824	74	(31)	796	(181)	1,071	11	176	5,077
GILA	1	13	14	2	268	(28)	(15)	149	30	(1)	16	(31)	(19)	1	38	438
LA PAZ	(2)	45	16	(1)	76	(24)	8	76	(4)	(7)	0	(42)	(9)	0	8	140
PINAL	72	118	213	(22)	1,134	(369)	39	834	81	(10)	795	36	570	5	18	3,514
YAVAPAI	30	(33)	160	39	(8)	(329)	(203)	243	(43)	4	195	121	241	6	27	450
YUMA	24	114	177	0	327	(515)	(4)	522	10	(17)	(210)	(265)	288	(1)	85	535
SOUTHERN	72	760	937	47	1,279	(2,948)	(871)	3,812	169	5	1,035	1,465	1,180	12	562	7,516
COCHISE	43	105	124	(3)	166	(137)	(107)	229	38	3	217	14	84	0	99	875
GRAHAM	17	(6)	17	(3)	322	(28)	(71)	204	18	(23)	(104)	(20)	(125)	2	27	227
GREENLEE	4	0	(17)	0	22	(4)	(17)	48	(7)	3	(59)	12	(76)	1	4	(86)
PIMA	(3)	586	746	52	546	(2,640)	(649)	3,148	89	28	897	1,496	1,205	9	403	5,913
SANTA CRUZ	11	75	67	1	223	(139)	(27)	183	31	(6)	84	(37)	92	0	29	587

CHART 7

MEDICAL ASSISTANCE PROGRAM

COMPARISON OF RECIPIENTS

FOR 1999, 2000, 2001, 2002, 2003, 2004, 2005, 2006, 2007, 2008, 2009, 2010, & 2011

Total Recipients

