



---

DEPARTMENT OF ECONOMIC SECURITY

---

*Your Partner For A Stronger Arizona*

State of Arizona

Department of Economic Security

Family Assistance Administration

Statistical Bulletin

March, 2011

Phone: (602) 542-3678

<https://www.azdes.gov/appreports.aspx>

\*\*\*\* STATISTICAL BULLETIN \*\*\*\*  
ARIZONA DEPARTMENT OF ECONOMIC SECURITY  
FAMILY ASSISTANCE ADMINISTRATION  
BOX 6123, PHOENIX, ARIZONA 85005  
PHONE (602) 542-3678

MARCH 2011

THIS ISSUE OF THE STATISTICAL BULLETIN COMPARES MARCH 2011 DATA FOR EACH OF THE INDICATED PROGRAMS WITH THE INFORMATION FOR FEBRUARY 2011 AND MARCH 2010. STATEWIDE SUMMARIES OF ACTIVITY WITHIN EACH OF THE SPECIFIC PROGRAMS FOR THIS REPORT PERIOD ARE DISCUSSED BELOW. THE TABLES COMPARE CURRENT AND PRIOR MONTH DATA. DISTRICT AND COUNTY COMPARISONS ARE PROVIDED WITHIN THIS BULLETIN

TANF SUMMARY

COMPARING TO FEBRUARY 2011, MARCH 2011 CASES DECREASED BY 287 (1.53%) TO 18,436. RECIPIENTS DECREASED BY 784 (1.85%) TO 41,552. PAYMENTS DECREASED BY \$85,224 (2.15%) TO \$3,883,398. AVERAGE PAYMENT PER CASE DECREASED BY \$1.33 (0.63%) TO \$0.00. PAYMENT PER RECIPIENT DECREASED BY \$0.28 (0.30%) TO \$93.46.

COMPARING TO MARCH 2010, MARCH 2011 CASES DECREASED BY 18,063 (49.49%). RECIPIENTS DECREASED BY 37,280 (47.29%). TOTAL PAYMENTS DECREASED BY \$3,847,545 (49.77%). THE AVERAGE PAYMENT PER CASE DECREASED BY \$1.17 (0.55%). THE AVERAGE PAYMENT PER RECIPIENT DECREASED BY \$4.61 (4.70%).

CASH ASSISTANCE (CA)

COMPARING TO FEBRUARY 2011, MARCH 2011 CASES DECREASED BY 345 (1.95%) TO 17,349. RECIPIENTS DECREASED BY 831 (2.11%) TO 38,508. PAYMENTS DECREASED BY \$83,761 (2.22%) TO \$3,696,220. AVERAGE PAYMENT PER CASE DECREASED BY \$0.58 (0.27%) TO \$213.05. PAYMENT PER RECIPIENT DECREASED BY \$0.10 (0.10%) TO \$95.99.

COMPARING TO MARCH 2010, MARCH 2011 CASES DECREASED BY 17,165 (49.73%). RECIPIENTS DECREASED BY 34,835 (47.50%). TOTAL PAYMENTS DECREASED BY \$3,686,198 (49.93%). THE AVERAGE PAYMENT PER CASE DECREASED BY \$0.85 (0.40%). THE AVERAGE PAYMENT PER RECIPIENT DECREASED BY \$4.67 (4.64%).

CASH ASSISTANCE UNEMPLOYED PARENT PROGRAM (CA-UP)

COMPARING TO FEBRUARY 2011, MARCH 2011 CASES DECREASED BY 8 (1.46%) TO 541. RECIPIENTS DECREASED BY 62 (3.13%) TO 1,918. PAYMENTS DECREASED BY \$4,733 (3.10%) TO \$147,810. AVERAGE PAYMENT PER CASE DECREASED BY \$4.64 (1.67%) TO \$273.22. PAYMENT PER RECIPIENT INCREASED BY \$0.02 (0.02%) TO \$77.06.

COMPARING TO MARCH 2010, MARCH 2011 CASES DECREASED BY 481 (47.06%). RECIPIENTS DECREASED BY 1,660 (46.39%). TOTAL PAYMENTS DECREASED BY \$135,424 (47.81%). THE AVERAGE PAYMENT PER CASE DECREASED BY \$3.92 (1.41%). THE AVERAGE PAYMENT PER RECIPIENT DECREASED BY \$2.10 (2.65%).

CASH ASSISTANCE WITH GRANT UNDER \$100 (CA-MOE)

COMPARING TO FEBRUARY 2011, MARCH 2011 CASES INCREASED BY 69 (15.10%) TO 526. RECIPIENTS INCREASED BY 118 (12.33%) TO 1,075. PAYMENTS INCREASED BY \$3,446 (9.94%) TO \$38,119. AVERAGE PAYMENT PER CASE DECREASED BY \$3.40 (4.48%) TO \$72.47. AVERAGE PAYMENT PER RECIPIENT DECREASED BY \$0.77 (2.13%) TO \$35.46.

COMPARING TO MARCH 2010, MARCH 2011 CASES DECREASED BY 408 (43.68%). RECIPIENTS DECREASED BY 758 (41.35%). TOTAL PAYMENTS DECREASED BY \$25,584 (40.16%). THE AVERAGE PAYMENT PER CASE INCREASED BY \$4.27 (6.26%). THE AVERAGE PAYMENT PER RECIPIENT INCREASED BY \$0.71 (2.04%).

CASH ASSISTANCE UNEMPLOYED PARENT PROGRAM WITH GRANT UNDER \$100 (CA-UP-MOE) NEW PROGRAM STARTING 7/01

COMPARING TO FEBRUARY 2011, MARCH 2011 CASES DECREASED BY 3 (13.04%) TO 20. RECIPIENTS DECREASED BY 9 (15.00%) TO 51. PAYMENTS DECREASED BY \$176 (12.35%) TO \$1,249. AVERAGE PAYMENT PER CASE INCREASED BY \$0.49 (0.79%) TO \$62.45. PAYMENT PER RECIPIENT INCREASED BY \$0.74 (3.12%) TO \$24.49.

COMPARING TO MARCH 2010, MARCH 2011 CASES DECREASED BY 9 (31.03%). RECIPIENTS DECREASED BY 27 (1.89%). TOTAL PAYMENTS DECREASED BY \$339 (21.35%). THE AVERAGE PAYMENT PER CASE INCREASED BY \$7.69 (14.04%). THE AVERAGE PAYMENT PER RECIPIENT INCREASED BY \$4.13 (20.28%).

TUBERCULOSIS CONTROL PROGRAM (TC)

COMPARING TO FEBRUARY 2011, MARCH 2011 CASES INCREASED BY 2 (66.67%) TO 5. RECIPIENTS INCREASED BY 2 (66.67%) TO 5. PAYMENTS INCREASED BY \$128 (32.90%) TO \$517. AVERAGE PAYMENT PER CASE INCREASED BY \$80.97 (62.45%) TO \$210.64. AVERAGE PAYMENT PER RECIPIENT DECREASED BY \$26.27 (20.26%) TO \$103.40.

COMPARING TO MARCH 2010, MARCH 2011 CASES INCREASED BY 4 (400.00%). RECIPIENTS INCREASED BY 4 (400.00%). TOTAL PAYMENTS INCREASED BY \$344 (198.84%). THE AVERAGE PAYMENT PER CASE INCREASED BY \$37.64 (21.76%). THE AVERAGE PAYMENT PER RECIPIENT DECREASED BY \$69.60 (40.23%).

SUPPLEMENTAL NUTRITION ASSISTANCE PROGRAM (SNAP)

COMPARING TO FEBRUARY 2011, MARCH 2011 SUPPLEMENTAL NUTRITION ASSISTANCE HOUSEHOLDS INCREASED BY 4,313 (0.96%) TO 455,860. PERSONS RECEIVING SUPPLEMENTAL NUTRITION ASSISTANCE INCREASED BY 7,481 (0.73%) TO 1,037,620. TOTAL COUPON ISSUANCE INCREASED BY \$1,124,144 (0.86%) TO \$132,163,365. THE AVERAGE HOUSEHOLD ALLOTMENT DECREASED BY \$0.28 (0.10%) TO \$289.92. THE AVERAGE ALLOTMENT PER PERSON INCREASED BY \$0.16 (0.13%) TO \$127.37.

COMPARING TO MARCH 2010, MARCH 2011 SUPPLEMENTAL NUTRITION ASSISTANCE HOUSEHOLDS INCREASED BY 16,532 (3.76%). PERSONS RECEIVING SUPPLEMENTAL NUTRITION ASSISTANCE INCREASED BY 20,520 (2.02%). TOTAL COUPON ISSUANCE INCREASED BY \$3,349,682 (2.60%). THE AVERAGE ALLOTMENT PER HOUSEHOLD DECREASED BY \$3.29 (1.12%). THE AVERAGE ALLOTMENT PER PERSON INCREASED BY \$0.72 (0.57%).

MEDICAL ASSISTANCE PROGRAM (MA) NEW TABLE INCLUDES PROP. 204 CATEGORIES

COMPARING TO JANUARY 2010, FEBRUARY 2010 TOTAL RECIPIENTS TOTAL RECIPIENTS DECREASED BY 6,946 (0.59%). SOBRA WOMEN AT 140% FPL DECREASED BY 248 (2.41%). SOBRA CHILDREN DECREASED BY 812 (1.23%). ADULTS W/O CHILD AT 100% INCREASED BY 446 (0.76%). FOSTER CARE INCREASED BY 69 (0.59%). 1931 AT 36% FPL DECREASED BY 4,919 (1.48%). EMERGENCY SERVICES DECREASED BY 5,083 (6.43%). INFANTS DECREASED BY 513 (1.02%). ADULT W/O CHILD AT 140% INCREASED BY 510 (0.33%). MEDICAL W/SPEND DOWN DECREASED BY 201 (3.10%). SOBRA WOMAN AT 100% INCREASED BY 99 (2.63%). SOBRA CHILD AT 100% INCREASED BY 902 (0.40%). TRANSITIONAL MEDICAL INCREASED BY 1,305 (3.04%). 1931 AT 100% INCREASED BY 1,355 (1.16%). YATI INCREASED BY 10 (3.02%). ALL OTHER CATEGORIES INCREASED BY 134 (0.51%).

COMPARING TO MARCH 2010, MARCH 2011 TOTAL RECIPIENTS TOTAL RECIPIENTS INCREASED BY 13,506 (1.14%). SOBRA WOMEN AT 140% FPL INCREASED BY 466 (4.54%). SOBRA CHILDREN INCREASED BY 3,986 (6.08%). ADULTS W/O CHILD AT 100% INCREASED BY 3,718 (6.16%). FOSTER CARE INCREASED BY 653 (5.48%). 1931 AT 36% FPL INCREASED BY 5,048 (1.53%). EMERGENCY SERVICES DECREASED BY 20,557 (29.23%). INFANTS DECREASED BY 4,156 (8.29%). ADULT W/O CHILD AT 140% INCREASED BY 14,172 (8.92%). MEDICAL W/SPEND DOWN INCREASED BY 365 (5.33%). SOBRA WOMAN AT 100% DECREASED BY 154 (3.86%). SOBRA CHILD AT 100% INCREASED BY 2,353 (1.03%). TRANSITIONAL MEDICAL INCREASED BY 1,097 (2.45%). 1931 AT 100% INCREASED BY 4,380 (3.63%). YATI INCREASED BY 7 (2.08%). ALL OTHER CATEGORIES INCREASED BY 2,128 (7.91%).

## TANF SUMMARY

### TABLES 1, 1A, 1B, & 1C: ARIZONA 1/

	MARCH 2011								CHANGE FROM			MARCH 2010		
	FAMILIES (CASES)	PERSONS (RECIP.)	ADULTS	CHILDREN	TOTAL PAYMENTS	AVERAGE	AVERAGE	TOTAL PAYMENTS	FAMILIES (CASES)	PERSONS (RECIP.)	TOTAL PAYMENTS	FAMILIES (CASES)	PERSONS (RECIP.)	TOTAL PAYMENTS
						PAYMENT/ CASE	PAYMENT/ RECIP.							
ARIZONA	18,436	41,552	11,122	30,430	3,883,398	210.64	93.46		(287)	(784)	(85,224)	(18,063)	(37,280)	(3,847,545)
REGION														
MARICOPA	11,373	26,319	6,933	19,386	2,402,916	211.28	91.30		(206)	(527)	(56,698)	(11,225)	(23,411)	(2,353,390)
NORTHERN	1,025	2,270	641	1,629	211,765	206.60	93.29		0	17	(1,448)	(1,772)	(4,265)	(460,559)
APACHE	40	77	25	52	7,709	192.73	100.12		3	8	504	(64)	(160)	(17,337)
COCONINO	76	189	43	146	15,942	209.76	84.35		(2)	(5)	(1,332)	(105)	(185)	(20,305)
MOHAVE	597	1,262	365	897	123,632	207.09	97.97		5	27	1,217	(539)	(1,054)	(107,750)
NAVAJO	312	742	208	534	64,482	206.67	86.90		(6)	(13)	(1,837)	(1,064)	(2,866)	(315,167)
CENTRAL	2,065	4,437	1,163	3,274	435,784	211.03	98.22		(70)	(183)	(19,538)	(1,968)	(3,988)	(407,671)
GILA	424	901	324	577	104,303	246.00	115.76		(38)	(90)	(9,369)	(285)	(595)	(66,610)
LA PAZ	71	150	40	110	13,747	193.62	91.65		(4)	(7)	(794)	(96)	(189)	(18,036)
PINAL	872	1,870	432	1,438	174,622	200.25	93.38		(14)	(52)	(5,001)	(804)	(1,710)	(167,051)
YAVAPAI	279	561	132	429	54,381	194.91	96.94		0	2	(515)	(346)	(631)	(66,629)
YUMA	419	955	235	720	88,731	211.77	92.91		(14)	(36)	(3,859)	(437)	(863)	(89,345)
SOUTHERN	3,973	8,526	2,385	6,141	832,933	209.65	97.69		(11)	(91)	(7,540)	(3,098)	(5,616)	(625,925)
COCHISE	331	634	146	488	67,030	202.51	105.73		(11)	(37)	(2,437)	(398)	(754)	(82,050)
GRAHAM	236	467	154	313	52,429	222.16	112.27		1	2	(954)	(24)	(18)	(5,784)
GREENLEE	16	37	11	26	3,460	216.25	93.51		(3)	(8)	(333)	(8)	(12)	(1,507)
PIMA	3,284	7,151	2,031	5,120	687,683	209.40	96.17		2	(51)	(4,043)	(2,562)	(4,655)	(516,554)
SANTA CRUZ	106	237	43	194	22,331	210.67	94.22		0	3	227	(106)	(177)	(20,030)

1/EXCLUDES: PRIOR MONTH NET TOTALS OF 1,185 CASES; 2,916 RECIPIENTS; \$280,181.  
 GRANT DIVERSION TOTALS OF: 1,638 CASES; \$1,229,823.  
 ZERO PAY TOTALS OF 3,303 CASES; 9,634 RECIPIENTS.

RRP: 232 CASES; 355 RECIPIENTS; \$47,061.

1/INCLUDES: TANF CHILD ONLY: 7,811 CASES; 13,197 RECIPIENTS; \$1,474,153.

	CURRENT MO. CASES	CURRENT MO. RECIP.	CURRENT MO. DOLLARS	PRIOR MO. CASES	PRIOR MO. RECIP.	PRIOR MO. DOLLARS
PASQUA/YAQUI	244	696	\$75,432	15	42	\$6,620
WM APACHE	0	0	\$0	0	0	\$2,925
SALT RIVER	86	282	\$26,711	7	27	\$4,800
SAN CARLOS	452	965	\$113,709	48	108	\$5,053
HOPÍ	110	307	\$24,611	1	4	\$0
<b>TOTAL</b>	<b>892</b>	<b>2,250</b>	<b>\$240,463</b>	<b>71</b>	<b>181</b>	<b>\$19,398</b>

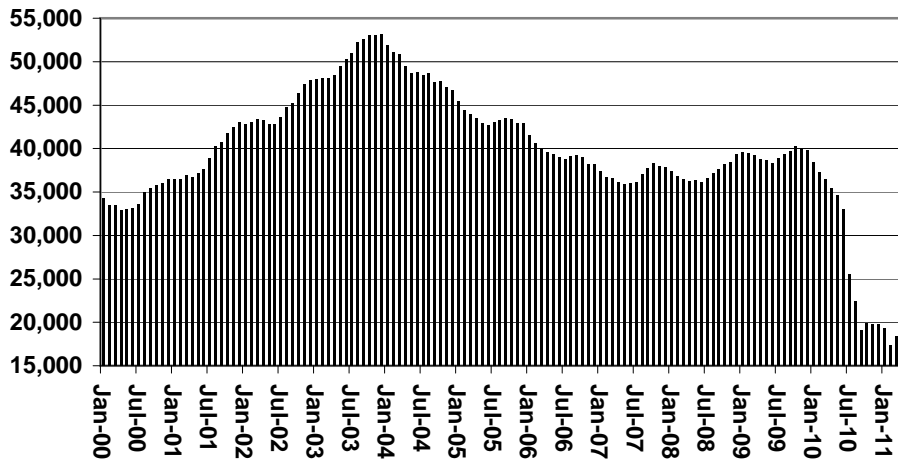
# TANF SUMMARY

## TABLES 1, 1A, 1B, & 1C

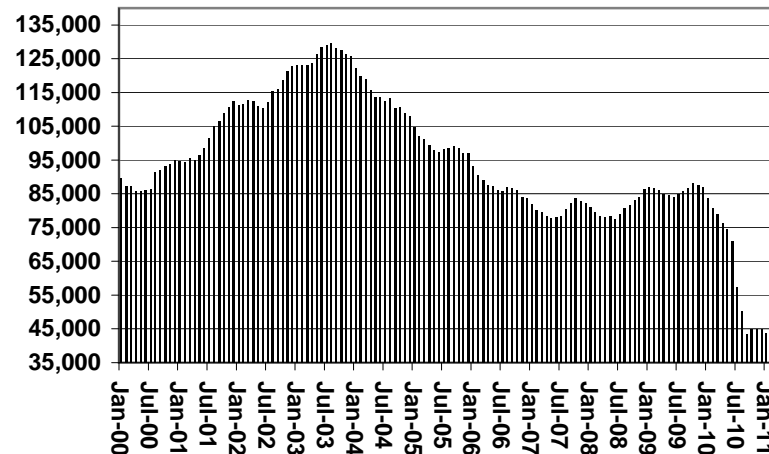
### COMPARISON OF CASES, RECIPIENTS, PAYMENTS & AVERAGE PAYMENTS

FOR 2000, 2001, 2002, 2003, 2004, 2005, 2006, 2007, 2008, 2009, 2010, & 2011

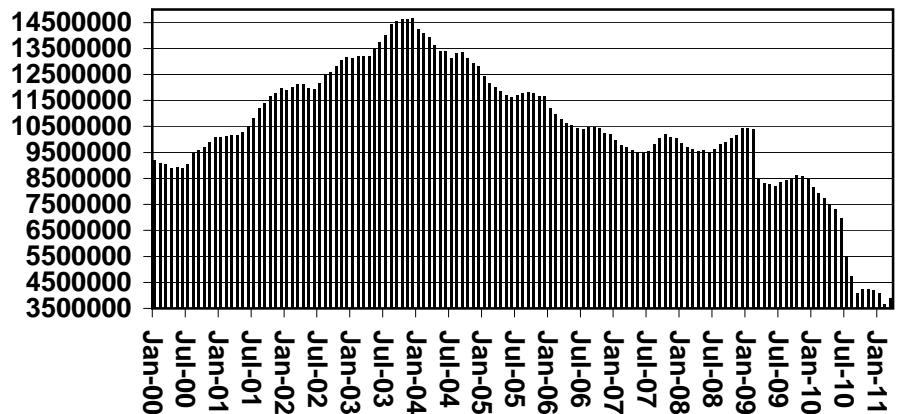
**Cases**



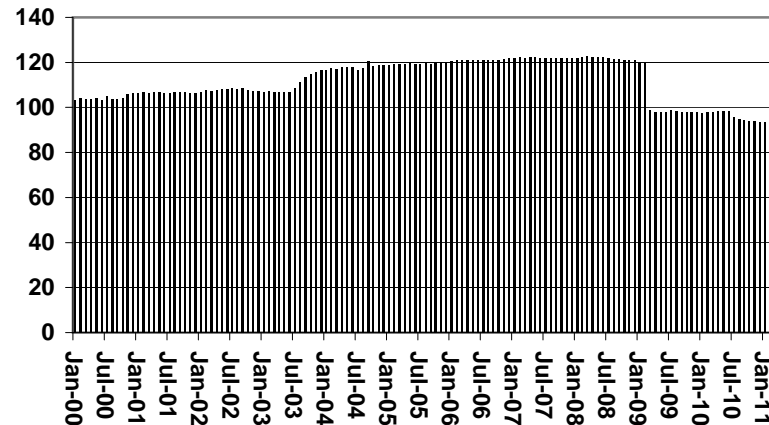
**Recipients**



**Payments**



**Average Payments Per Recipient**



**TABLE 1**  
**CASH ASSISTANCE: ARIZONA 1/**

	MARCH 2011								CHANGE FROM			FEBRUARY 2011			MARCH 2010		
	FAMILIES (CASES)	(RECIP.)	ADULTS	CHILDREN	TOTAL PAYMENTS	AVERAGE PAYMENT/ CASE	AVERAGE PAYMENT/ RECIP.		FAMILIES (CASES)	PERSONS (RECIP.)	TOTAL PAYMENTS	FAMILIES (CASES)	PERSONS (RECIP.)	TOTAL PAYMENTS	FAMILIES (CASES)	PERSONS (RECIP.)	TOTAL PAYMENTS
	ARIZONA	17,349	38,508	10,058	28,450	3,696,220	213.05	95.99		(345)	(831)	(83,761)	(17,165)	(34,835)	(3,686,198)		
REGION																	
MARICOPA	10,683	24,345	6,302	18,043	2,280,271	213.45	93.66		(231)	(540)	(56,706)	(10,559)	(21,588)	(2,233,693)			
NORTHERN	973	2,123	574	1,549	202,863	208.49	95.55		(9)	(2)	(1,681)	(1,732)	(4,150)	(454,539)			
APACHE	37	68	21	47	7,288	196.97	107.18		2	6	731	(66)	(166)	(17,480)			
COCONINO	72	173	38	135	15,509	215.40	89.65		(3)	(9)	(1,102)	(106)	(193)	(20,461)			
MOHAVE	564	1,172	322	850	117,523	208.37	100.28		(2)	14	582	(511)	(976)	(104,443)			
NAVAJO	300	710	193	517	62,543	208.48	88.09		(6)	(13)	(1,892)	(1,049)	(2,815)	(312,155)			
CENTRAL	1,970	4,198	1,077	3,121	421,358	213.89	100.37		(54)	(125)	(13,139)	(1,115)	(2,298)	(239,515)			
GILA	422	897	323	574	104,069	246.61	116.02		(38)	(90)	(9,292)	(270)	(564)	(64,870)			
LA PAZ	63	133	33	100	13,196	209.46	99.22		(8)	(12)	(735)	(90)	(182)	(17,545)			
PINAL	827	1,758	395	1,363	167,250	202.24	95.14		(8)	(23)	(3,112)	(755)	(1,552)	(157,100)			
YAVAPAI	257	505	111	394	50,846	197.84	100.69		(8)	(18)	(1,927)	(339)	(623)	(67,089)			
YUMA	401	905	215	690	85,997	214.46	95.02		(15)	(40)	(4,137)	(424)	(826)	(86,557)			
SOUTHERN	3,723	7,842	2,105	5,737	791,728	212.66	100.96		(28)	(106)	(6,171)	(2,996)	(5,350)	(604,805)			
COCHISE	315	600	136	464	64,789	205.68	107.98		(9)	(32)	(2,302)	(387)	(740)	(81,178)			
GRAHAM	233	459	151	308	51,911	222.79	113.10		4	9	(587)	(22)	(17)	(5,470)			
GREENLEE	16	37	11	26	3,460	216.25	93.51		(2)	(6)	(288)	(7)	(8)	(1,172)			
PIMA	3,059	6,533	1,769	4,764	650,663	212.70	99.60		(23)	(83)	(3,372)	(2,473)	(4,398)	(496,094)			
SANTA CRUZ	100	213	38	175	20,905	209.05	98.15		2	6	378	(107)	(187)	(20,891)			

1/EXCLUDES: PRIOR MONTH NET TOTALS OF: 629 CASES; 1,574 RECIPIENTS; \$212,362.  
GRANT DIVERSION TOTALS OF: 1,638 CASES; \$1,229,823.  
ZERO PAY TOTALS OF 3,294 CASES; 9,591 RECIPIENTS.

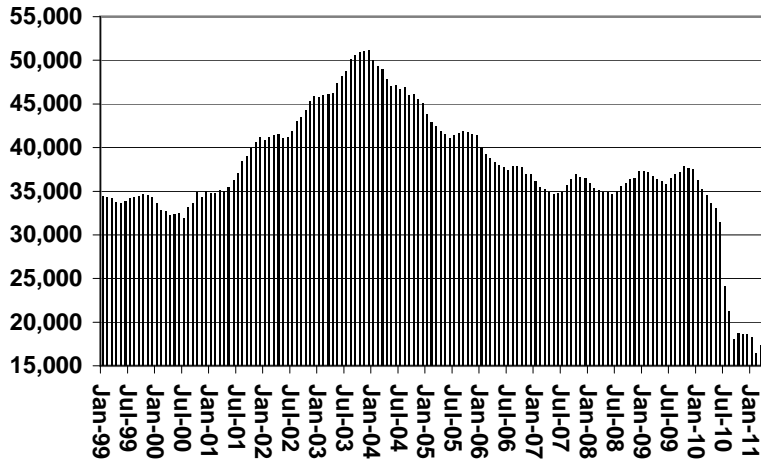
	CURRENT MO. CASES	CURRENT MO. RECIP.	CURRENT MO. DOLLARS	PRIOR MO. CASES	PRIOR MO. RECIP.	PRIOR MO. DOLLARS
PASQUA/YAQUI	235	658	\$72,445	14	40	\$6,392
WM APACHE	0	0	\$0	0	0	\$2,925
SALT RIVER	86	282	\$26,711	7	27	\$4,800
SAN CARLOS	452	965	\$113,709	24	54	\$253
HOPI	110	307	\$24,611	1	4	\$0
<b>TOTAL</b>	<b>883</b>	<b>2,212</b>	<b>\$237,476</b>	<b>46</b>	<b>125</b>	<b>\$14,370</b>

CASES WITH GRANT UNDER \$100 (SEE TABLE 1B).

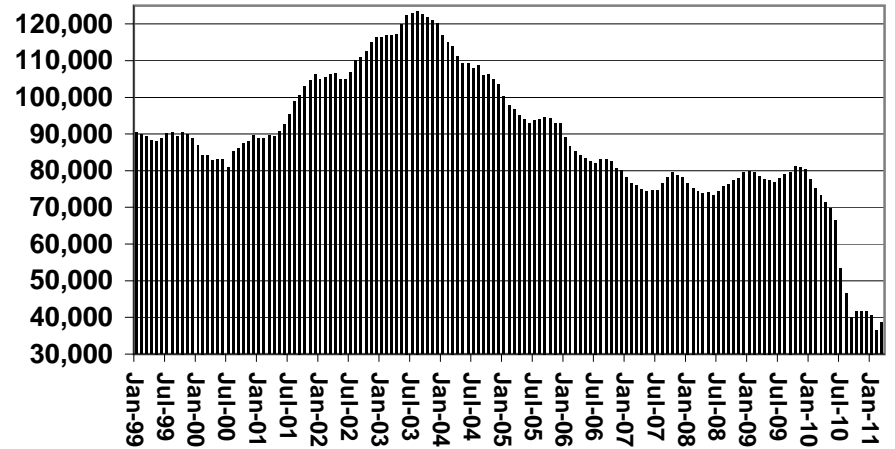
# CHART 1

## CASH ASSISTANCE PROGRAM COMPARISON OF CASES, RECIPIENTS, PAYMENTS & AVERAGE PAYMENTS FOR 1999, 2000, 2001, 2002, 2003, 2004, 2005, 2006, 2007, 2008, 2009, 2010, & 2011

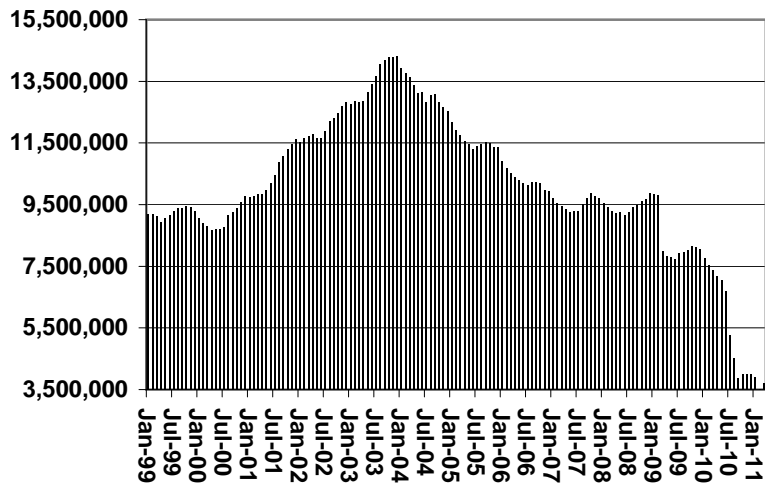
### Cases



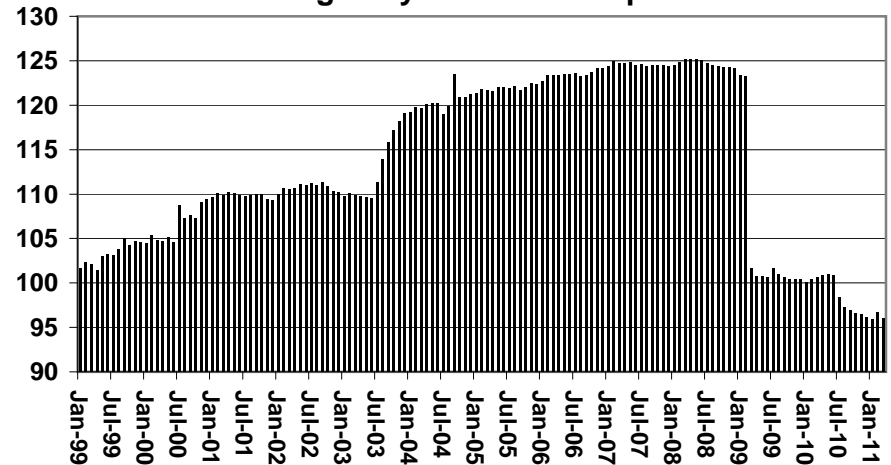
### Recipients



### Payments



### Average Payment Per Recipient



**TABLE 1A  
CA-UP**

**CASH ASSISTANCE UNEMPLOYED PARENT PROGRAM: ARIZONA 1**

	MARCH 2011							CHANGE FROM			FEBRUARY 2011			MARCH 2010		
	FAMILIES (CASES)	PERSONS (RECIP.)	ADULTS	CHILDREN	TOTAL PAYMENTS	AVERAGE PAYMENT/ CASE	AVERAGE PAYMENT/ RECIP.	FAMILIES (CASES)	PERSONS (RECIP.)	TOTAL PAYMENTS	FAMILIES (CASES)	PERSONS (RECIP.)	TOTAL PAYMENTS			
	ARIZONA	541	1,918	774	1,144	147,810	273.22	77.06	(8)	(62)	(4,733)	(481)	(1,660)	(135,424)		
REGION																
MARICOPA	358	1,275	472	803	99,062	276.71	77.70	3	(15)	(851)	(377)	(1,251)	(101,947)			
NORTHERN	26	96	50	46	7,115	273.65	74.11	1	5	152	(10)	(44)	(3,778)			
APACHE	1	3	2	1	278	278.00	92.67	0	0	(278)	0	0	0			
COCONINO	1	6	2	4	236	236.00	39.33	(1)	(4)	(335)	1	6	236			
MOHAVE	18	66	34	32	5,056	280.89	76.61	1	6	539	(4)	(19)	(1,376)			
NAVAJO	6	21	12	9	1,545	257.50	73.57	1	3	226	(7)	(31)	(2,638)			
CENTRAL	40	133	55	78	10,023	250.58	75.36	(7)	(34)	(2,382)	(33)	(141)	(9,883)			
GILA	0	0	0	0	0	0.00	0.00	0	0	0	(4)	(16)	(1,260)			
LA PAZ	1	4	2	2	156	156.00	39.00	0	(2)	(293)	0	1	(19)			
PINAL	23	70	26	44	5,467	237.70	78.10	(7)	(32)	(2,089)	(29)	(126)	(8,604)			
YAVAPAI	9	33	13	20	2,458	273.11	74.48	3	10	762	1	12	592			
YUMA	7	26	14	12	1,942	277.43	74.69	0	0	103	(8)	(31)	(2,332)			
SOUTHERN	117	414	197	217	31,610	270.17	76.35	(8)	(28)	(2,517)	(54)	(205)	(18,076)			
COCHISE	6	18	7	11	1,284	214.00	71.33	0	(2)	(196)	0	2	(130)			
GRAHAM	1	5	2	3	392	0.00	0.00	(1)	(3)	(278)	(1)	(1)	(164)			
GREENLEE	0	0	0	0	0	0.00	0.00	0	0	0	(1)	(4)	(335)			
PIMA	107	376	185	191	28,758	268.77	76.48	(7)	(23)	(2,043)	(54)	(213)	(18,412)			
SANTA CRUZ	3	15	3	12	1,176	392.00	0.00	0	0	0	2	11	965			

1/EXCLUDES: PRIOR MONTH NET TOTALS OF: 75 CASES; 294 RECIPIENTS; \$35,338.  
GRANT DIVERSION TOTALS OF: 0 CASES; \$0.  
ZERO PAY TOTALS OF 9 CASES; 43 RECIPIENTS.

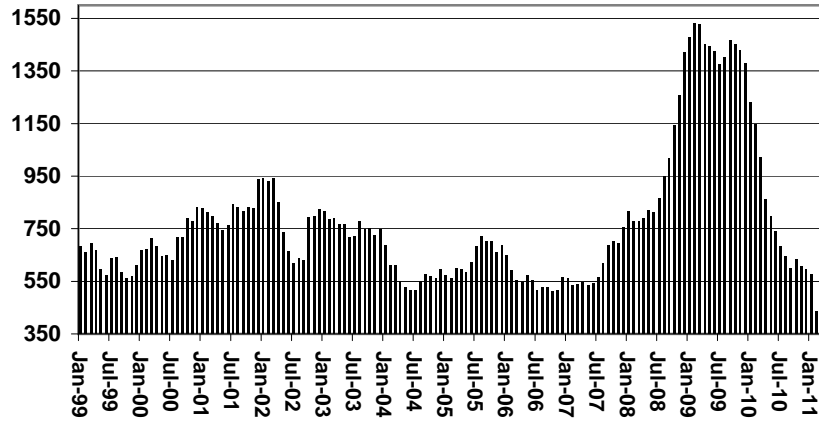
	CURRENT MO. CASES	CURRENT MO. RECIP.	CURRENT MO. DOLLARS	PRIOR MO. CASES	PRIOR MO. RECIP.	PRIOR MO. DOLLARS
PASQUAYYAQUI	9	38	\$2,987	1	2	\$228
WM APACHE	0	0	\$0	0	0	\$0
SALT RIVER	0	0	\$0	0	0	\$0
SAN CARLOS	0	0	\$0	24	54	\$4,800
HOPI	0	0	\$0	0	0	\$0
<b>TOTAL</b>	<b>9</b>	<b>38</b>	<b>\$2,987</b>	<b>25</b>	<b>56</b>	<b>\$5,028</b>

CASES WITH GRANT UNDER \$100 (SEE TABLE 1C).

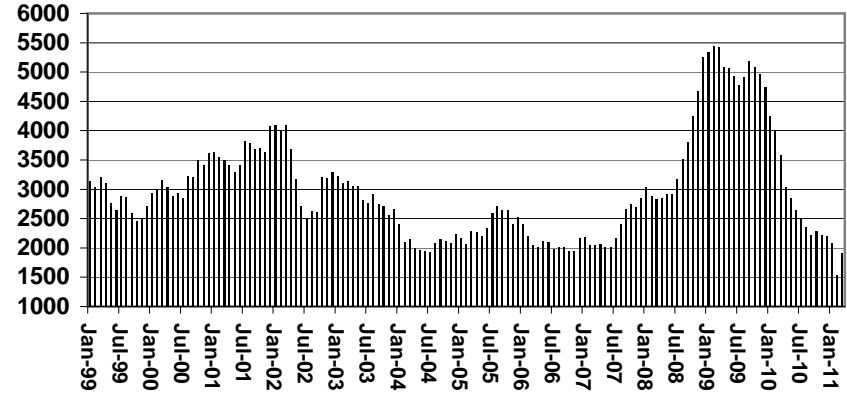
# CHART 1A

## CASH ASSISTANCE UNEMPLOYED PARENT PROGRAM COMPARISON OF CASES, RECIPIENTS, PAYMENTS & AVERAGE PAYMENTS FOR 1999, 2000, 2001, 2002, 2003, 2004, 2005, 2006, 2007, 2008, 2009, 2010, & 2011

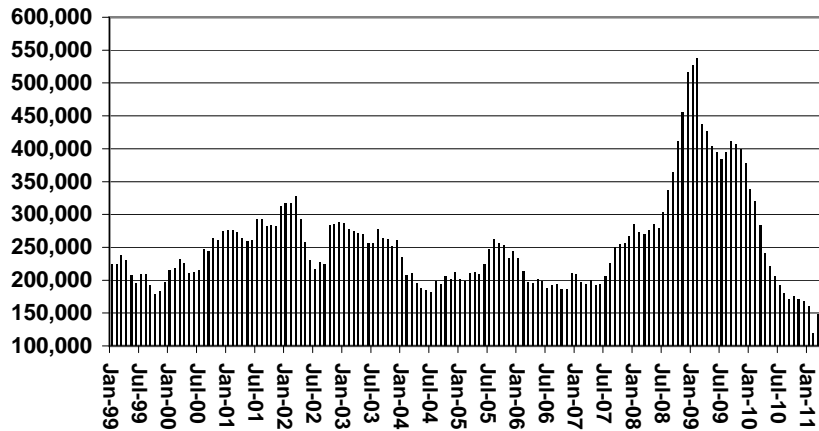
### Cases



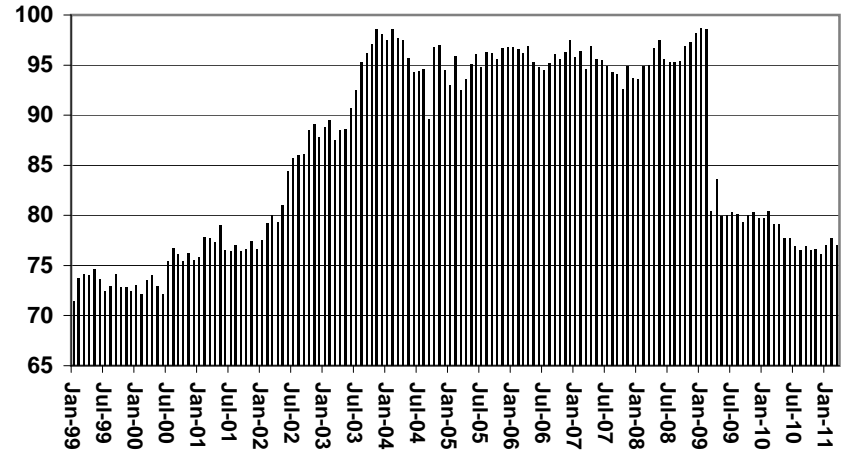
### Recipients



### Payments



### Average Payment Per Recipient





**TABLE 1B 1/**

**CASH ASSISTANCE: ARIZONA  
CASES WITH GRANT UNDER \$100**

	MARCH 2011							CHANGE FROM			MARCH 2010		
					AVERAGE	AVERAGE	FEBRUARY 2011						
	FAMILIES (CASES)	PERSONS (RECIP.)	ADULTS	CHILDREN	TOTAL PAYMENTS	PAYMENT/ CASE	PAYMENT/ RECIP.	FAMILIES (CASES)	PERSONS (RECIP.)	TOTAL PAYMENTS	FAMILIES (CASES)	PERSONS (RECIP.)	TOTAL PAYMENTS
ARIZONA	526	1,075	277	798	38,119	72.47	35.46	69	118	3,446	(408)	(758)	(25,584)
REGION													
MARICOPA	317	667	155	512	22,708	71.63	34.04	29	53	1,340	(275)	(526)	(17,037)
NORTHERN	26	51	17	34	1,787	68.73	35.04	8	14	81	(30)	(71)	(2,242)
APACHE	2	6	2	4	143	71.50	23.83	1	2	51	2	6	143
COCONINO	3	10	3	7	197	65.67	19.70	2	8	105	0	2	(80)
MOHAVE	15	24	9	15	1,053	70.20	43.88	6	7	96	(24)	(59)	(1,931)
NAVAJO	6	11	3	8	394	65.67	35.82	(1)	(3)	(171)	(8)	(20)	(374)
CENTRAL	53	98	27	71	4,258	80.34	43.45	9	16	1,037	(52)	(89)	(3,032)
GILA	2	4	1	3	234	117.00	58.50	0	0	(77)	(11)	(15)	(480)
LA PAZ	7	13	5	8	395	56.43	30.38	4	7	234	(6)	(8)	(472)
PINAL	21	37	9	28	1,816	86.48	49.08	0	(2)	111	(21)	(37)	(1,436)
YAVAPAI	12	20	6	14	1,021	85.08	51.05	4	7	594	(9)	(23)	(188)
YUMA	11	24	6	18	792	72.00	33.00	1	4	175	(5)	(6)	(456)
SOUTHERN	130	259	78	181	9,366	72.05	36.16	23	35	988	(51)	(72)	(3,273)
COCHISE	10	16	3	13	957	95.70	59.81	(2)	(3)	61	(11)	(16)	(742)
GRAHAM	2	3	1	2	126	63.00	42.00	(2)	(4)	(89)	(1)	0	(150)
GREENLEE	0	0	0	0	0	0.00	0.00	(1)	(2)	(45)	0	0	0
PIMA	115	231	72	159	8,033	69.85	34.77	30	47	1,212	(38)	(55)	(2,277)
SANTA CRUZ	3	9	2	7	250	83.33	27.78	(2)	(3)	(151)	(1)	(1)	(104)

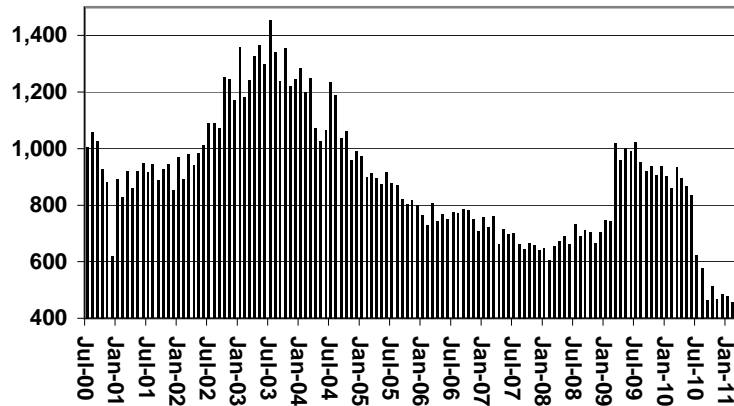
EXCLUDES: PRIOR MONTH NET TOTALS OF 457 CASES; 975 RECIPIENTS; \$31,054.

# CHART 1B

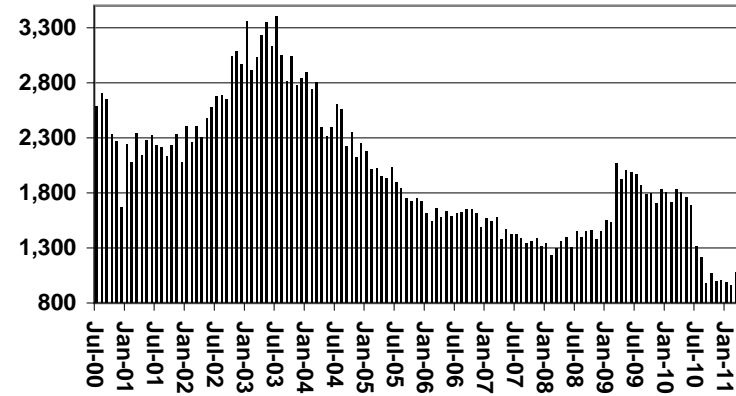
## CASH ASSISTANCE PROGRAM CASES WITH GRANT UNDER \$100

FOR 1999, 2000, 2001, 2002, 2003, 2004, 2005, 2006, 2007, 2008, 2009, 2010, & 2011

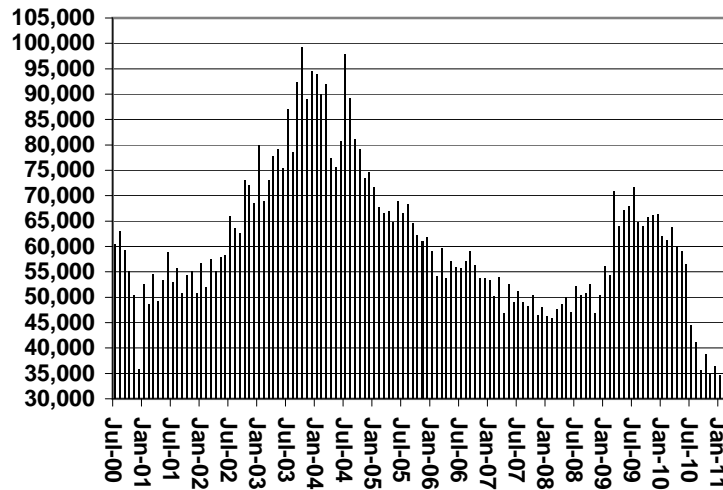
Cases



Recipients



Payments



Average Payment Per Recipient

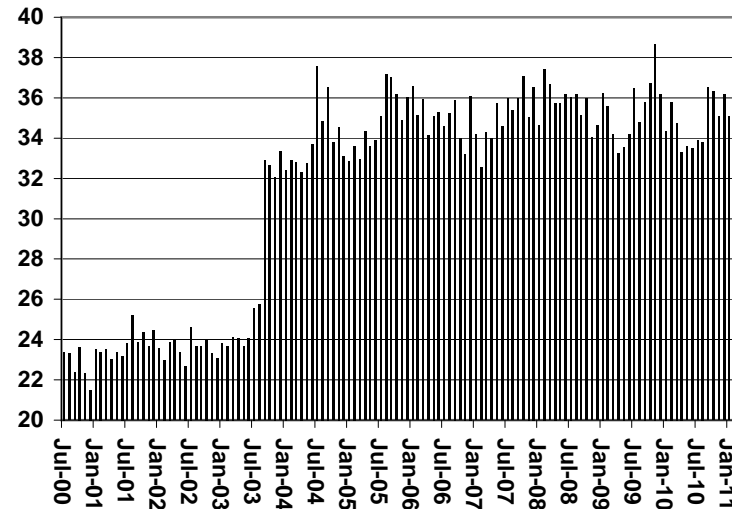


TABLE 1C 1/

CASH ASSISTANCE UNEMPLOYED PARENT PROGRAM: ARIZONA  
 CASES WITH GRANT UNDER \$100

	MARCH 2011							CHANGE FROM			MARCH 2010		
	FAMILIES (CASES)	PERSONS (RECIP.)	ADULTS	CHILDREN	TOTAL PAYMENTS	AVERAGE	AVERAGE	FAMILIES (CASES)	PERSONS (RECIP.)	TOTAL PAYMENTS	FAMILIES (CASES)	PERSONS (RECIP.)	TOTAL PAYMENTS
						PAYMENT/ CASE	PAYMENT/ RECIP.						
ARIZONA	20	51	13	38	1,249	62.45	24.49	(3)	(9)	(176)	(9)	(27)	(339)
REGION													
MARICOPA	15	32	4	28	875	58.33	27.34	(7)	(25)	(481)	(14)	(46)	(713)
NORTHERN	0	0	0	0	0	0.00	0.00	0	0	0	0	0	0
APACHE	0	0	0	0	0	0.00	0.00	0	0	0	0	0	0
COCONINO	0	0	0	0	0	0.00	0.00	0	0	0	0	0	0
MOHAVE	0	0	0	0	0	0.00	0.00	0	0	0	0	0	0
NAVAJO	0	0	0	0	0	0.00	0.00	0	0	0	0	0	0
CENTRAL	2	8	4	4	145	72.50	18.13	2	8	145	2	8	145
GILA	0	0	0	0	0	0.00	0.00	0	0	0	0	0	0
LA PAZ	0	0	0	0	0	0.00	0.00	0	0	0	0	0	0
PINAL	1	5	2	3	89	89.00	17.80	1	5	89	1	5	89
YAVAPAI	1	3	2	1	56	56.00	18.67	1	3	56	1	3	56
YUMA	0	0	0	0	0	0.00	0.00	0	0	0	0	0	0
SOUTHERN	3	11	5	6	229	76.33	20.82	2	8	160	3	11	229
COCHISE	0	0	0	0	0	0.00	0.00	0	0	0	0	0	0
GRAHAM	0	0	0	0	0	0.00	0.00	0	0	0	0	0	0
GREENLEE	0	0	0	0	0	0.00	0.00	0	0	0	0	0	0
PIMA	3	11	5	6	229	76.33	20.82	2	8	160	3	11	229
SANTA CRUZ	0	0	0	0	0	0.00	0.00	0	0	0	0	0	0

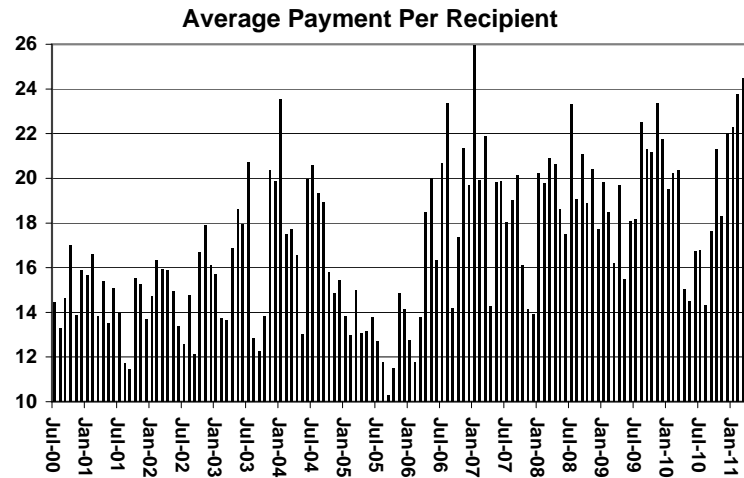
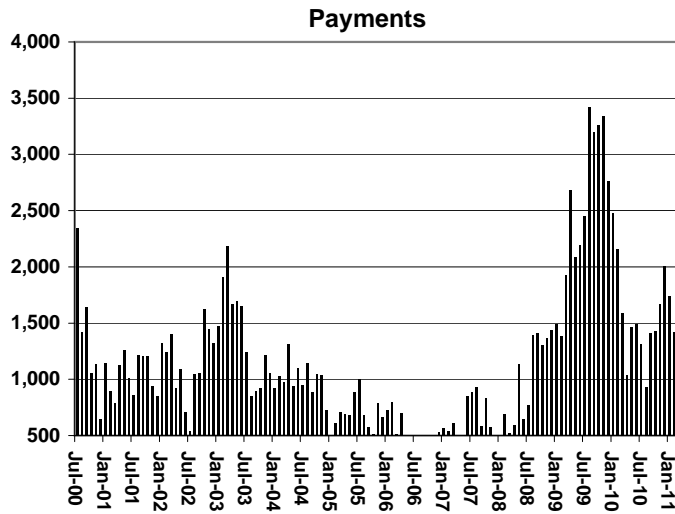
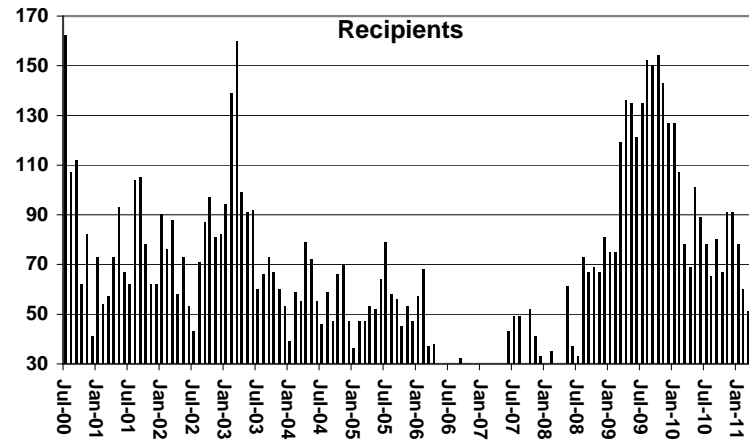
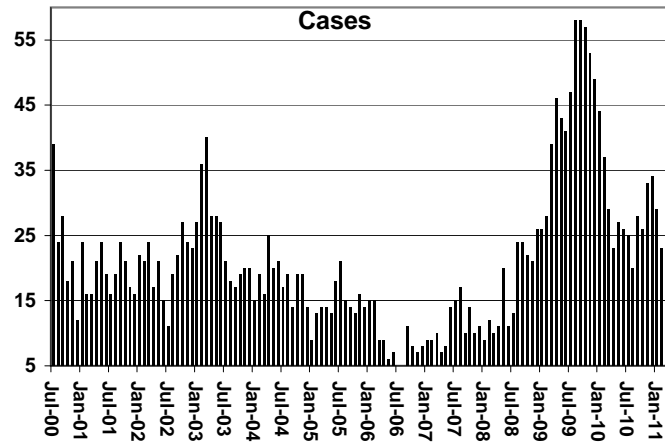
EXCLUDES: PRIOR MONTH NET TOTALS OF 23 CASES; 70 RECIPIENTS; \$1,361.

# CHART 1C

## CASH ASSISTANCE UNEMPLOYED PARENT PROGRAM

### CASES WITH GRANT UNDER \$100

FOR 1999, 2000, 2001, 2002, 2003, 2004, 2005, 2006, 2007, 2008, 2009, 2010, & 2011



**TABLE 4**

**TUBERCULOSIS CONTROL: ARIZONA 1/**

	CHANGE FROM											
	MARCH 2011					FEBRUARY 2011			MARCH 2010			
	NUMBER OF CASES	PERSONS (RECIP.)	TOTAL PAYMENTS	AVERAGE PAYMENT/ CASE	AVERAGE PAYMENT/ RECIP.	NUMBER OF CASES	PERSONS (RECIP.)	TOTAL PAYMENTS	NUMBER OF CASES	PERSONS (RECIP.)	TOTAL PAYMENTS	
ARIZONA	5	5	517	103.40	103.40	2	2	128	4	4	344	
REGION												
MARICOPA	5	5	517	103.40	103.40	2	2	128	4	4	344	
NORTHERN	0	0	0	0.00	0.00	0	0	0	0	0	0	
APACHE	0	0	0	0.00	0.00	0	0	0	0	0	0	
COCONINO	0	0	0	0.00	0.00	0	0	0	0	0	0	
MOHAVE	0	0	0	0.00	0.00	0	0	0	0	0	0	
NAVAJO	0	0	0	0.00	0.00	0	0	0	0	0	0	
CENTRAL	0	0	0	0.00	0.00	0	0	0	0	0	0	
GILA	0	0	0	0.00	0.00	0	0	0	0	0	0	
LA PAZ	0	0	0	0.00	0.00	0	0	0	0	0	0	
PINAL	0	0	0	0.00	0.00	0	0	0	0	0	0	
YAVAPAI	0	0	0	0.00	0.00	0	0	0	0	0	0	
YUMA	0	0	0	0.00	0.00	0	0	0	0	0	0	
SOUTHERN	0	0	0	0.00	0.00	0	0	0	0	0	0	
COCHISE	0	0	0	0.00	0.00	0	0	0	0	0	0	
GRAHAM	0	0	0	0.00	0.00	0	0	0	0	0	0	
GREENLEE	0	0	0	0.00	0.00	0	0	0	0	0	0	
PIMA	0	0	0	0.00	0.00	0	0	0	0	0	0	
SANTA CRUZ	0	0	0	0.00	0.00	0	0	0	0	0	0	

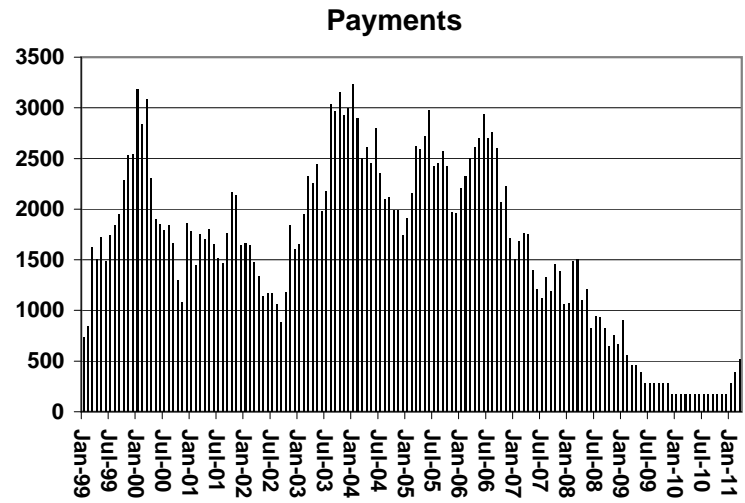
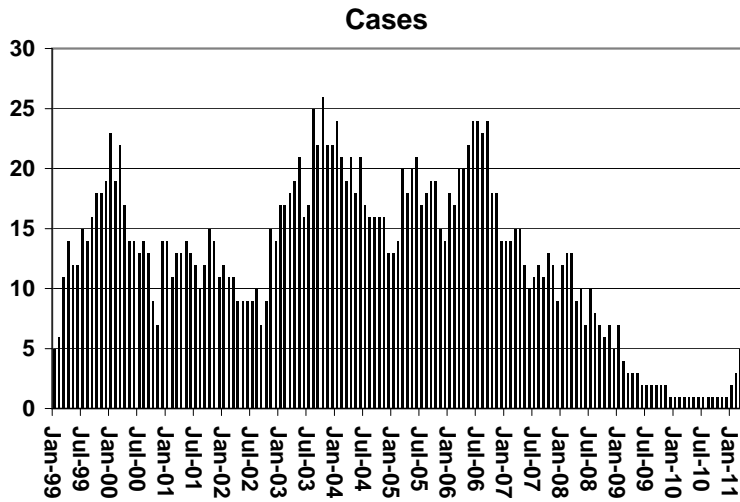
1/EXCLUDES: PRIOR MONTH NET TOTALS OF : 0 CASES; 0 RECIPIENTS; \$0.

# CHART 4

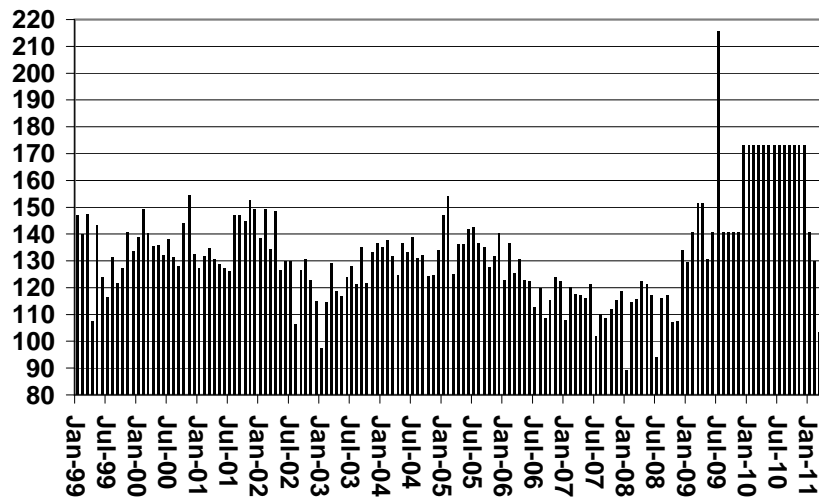
## TUBERCULOSIS CONTROL PROGRAM

### COMPARISON OF CASES, PAYMENTS & AVERAGE PAYMENTS

FOR 1999, 2000, 2001, 2002, 2003, 2004, 2005, 2006, 2007, 2008, 2009, 2010, & 2011



### Average Payment Per Case



**TABLE 6**

**SUPPLEMENTAL NUTRITION ASSISTANCE PROGRAM: ARIZONA 1**

	CHANGE FROM												
	MARCH 2011				FEBRUARY 2011			MARCH 2010					
	HOUSEHOLDS	PERSONS	ADULTS	CHILDREN	TOTAL PAYMENTS ISSUANCE	AVERAGE PAYMT./ HOUSEHOLD	AVERAGE PAYMT./ PERSON	HOUSEHOLDS	PERSONS	TOTAL PAYMENTS ISSUANCE	HOUSEHOLDS	PERSONS	TOTAL PAYMENTS ISSUANCE
ARIZONA	455,860	1,037,620	537,702	499,918	132,163,365	289.92	127.37	4,313	7,481	1,124,144	16,532	20,520	3,349,682
REGION													
MARICOPA	243,199	557,921	270,666	287,255	71,550,591	294.21	128.25	2,413	4,792	764,838	2,488	(268)	410,473
NORTHERN	52,814	127,021	71,664	55,357	15,955,291	302.10	125.61	304	265	54,751	2,322	2,108	407,903
APACHE	9,968	27,256	14,854	12,402	3,384,036	339.49	124.16	61	(24)	(895)	473	(30)	53,179
COCONINO	9,411	23,130	12,356	10,774	2,877,464	305.76	124.40	(37)	(164)	(17,109)	150	6	(14,386)
MOHAVE	20,364	42,881	25,866	17,015	5,472,510	268.73	127.62	161	335	65,258	1,026	1,466	239,572
NAVAJO	13,071	33,754	18,588	15,166	4,221,281	322.95	125.06	119	118	7,497	673	666	129,538
CENTRAL	59,796	138,514	75,742	62,772	17,189,743	287.47	124.10	518	781	93,461	4,121	7,155	946,095
GILA	6,146	13,208	7,796	5,412	1,735,437	282.37	131.39	78	135	24,403	535	867	129,763
LA PAZ	2,044	4,107	2,406	1,701	532,920	260.72	129.76	33	16	992	161	233	32,079
PINAL	21,851	53,205	27,741	25,464	6,781,334	310.34	127.46	304	645	78,225	1,617	3,171	418,474
YAVAPAI	14,891	29,897	18,090	11,807	3,733,406	250.72	124.88	132	136	25,638	1,014	1,529	204,427
YUMA	14,864	38,097	19,709	18,388	4,406,646	296.46	115.67	(29)	(151)	(35,797)	794	1,355	161,352
SOUTHERN	100,051	214,164	119,630	94,534	27,467,740	274.54	128.26	1,078	1,643	211,094	7,601	11,525	1,585,211
COCHISE	10,666	22,840	13,118	9,722	2,852,523	267.44	124.89	162	289	31,774	777	1,235	165,578
GRAHAM	3,480	7,964	4,454	3,510	1,027,021	295.12	128.96	49	86	12,062	216	172	57,307
GREENLEE	507	1,104	625	479	139,277	274.71	126.16	16	22	3,911	(19)	(112)	(6,049)
PIMA	80,997	170,556	95,522	75,034	22,059,450	272.35	129.34	863	1,272	170,758	6,316	9,614	1,278,807
SANTA CRUZ	4,401	11,700	5,911	5,789	1,389,469	315.72	118.76	(12)	(26)	(7,411)	311	616	89,568

1/EXCLUDES: PRIOR MONTH NET TOTALS OF : 15,086 CASES; 36,022 RECIPIENTS; \$3,468,466.

AGED CANCELATIONS: 11,204 CASES; 13,821 RECIPIENTS; \$668,363.

SNAP CONVERSIONS: 0 CASES; 0 RECIPIENTS; \$0.

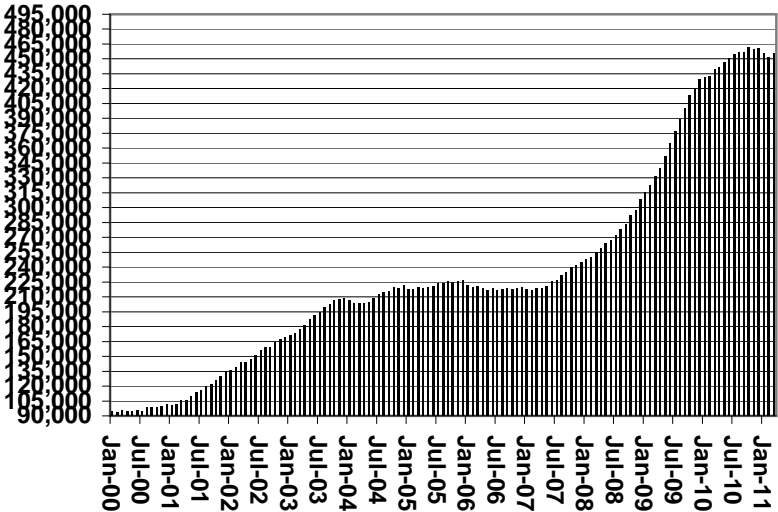
SNAP CHILD ONLY: 57,792 CASES; 136,525 RECIPIENTS; \$20,709,059.

SNAP ZERO PAY: 12,370 CASES; 50,815 RECIPIENTS.

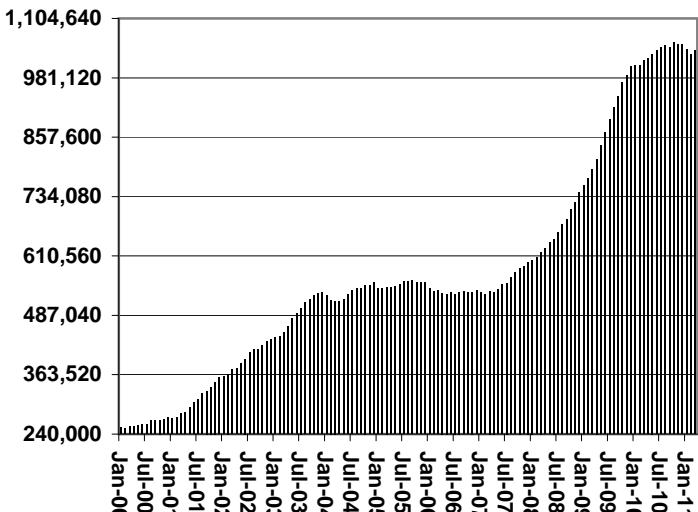
# CHART 6

## SUPPLEMENTAL NUTRITION ASSISTANCE PROGRAM (SNAP) COMPARISON OF HOUSEHOLDS, RECIPIENTS, PAYMENTS & AVERAGE PAYMENTS FOR 1999, 2000, 2001, 2002, 2003, 2004, 2005, 2006, 2007, 2008, 2009, 2010, & 2011

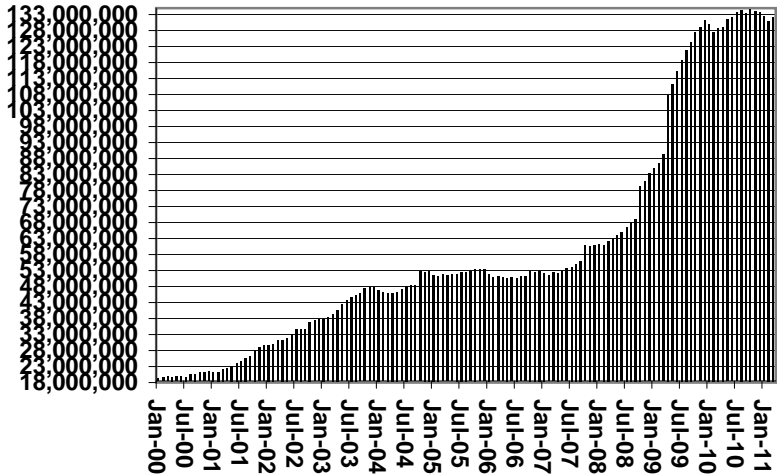
**Households**



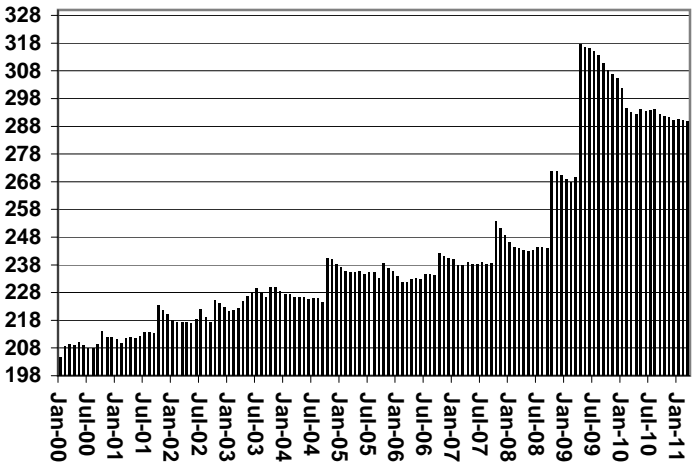
**Recipients**



**Payments**



**Average Payment Per Household**





**TABLE 7A**  
**MEDICAL ASSISTANCE PROGRAM**  
**RECIPIENTS**  
**MARCH 2011**

	SOBRA WOMAN 133% FPL	SOBRA CHILD	ADULT W/O CHILD 100% FPL	FOSTER CARE	1931 36% FPL	FEDERAL EMERGENCY SERVICES	INFANTS	ADULT W/O CHILD 40% FPL	MEDICAL W/SPEND DOWN	SOBRA WOMAN 100% FPL	SOBRA CHILD 100% FPL	TRANSITIONAL MEDICAL T1 - T4	1931 100% FPL	YATI	OTHER	TOTAL CASES
ARIZONA	10,723	69,496	64,121	12,576	334,197	49,776	45,952	173,010	7,217	3,836	230,905	45,893	125,100	344	29,031	1,202,177
REGION																
MARICOPA	5,692	39,819	31,512	6,771	185,822	38,631	27,418	87,822	3,953	2,008	135,804	22,000	65,310	185	14,980	667,727
NORTHERN	1,274	7,502	7,813	653	43,839	1,101	4,629	25,699	952	542	23,304	4,971	14,919	15	3,078	140,291
APACHE	206	1,512	1,128	34	11,506	76	900	5,897	170	107	4,108	858	2,632	0	424	29,558
COCONINO	315	1,461	1,709	127	8,327	416	1,065	4,628	124	103	4,845	1,088	3,046	12	430	27,696
MOHAVE	401	2,223	3,125	345	11,723	401	1,409	8,174	461	182	8,420	1,857	5,320	2	1,627	45,670
NAVAJO	352	2,306	1,851	147	12,283	208	1,255	7,000	197	150	5,931	1,168	3,921	1	597	37,367
CENTRAL	1,699	9,286	9,698	1,493	42,121	3,666	5,976	22,209	1,052	558	28,997	8,738	18,363	39	4,454	158,349
GILA	115	690	821	98	4,536	125	499	2,673	117	30	1,989	435	1,367	1	378	13,874
LA PAZ	33	272	268	17	1,242	129	149	860	19	12	719	150	420	0	161	4,451
PINAL	584	4,164	2,954	590	18,242	1,203	2,272	8,654	325	182	10,702	2,352	6,287	17	1,348	59,876
YAVAPAI	420	1,712	2,796	490	7,318	1,163	1,150	5,223	307	127	6,326	1,601	4,176	18	1,242	34,069
YUMA	547	2,448	2,859	298	10,783	1,046	1,906	4,799	284	207	9,261	4,200	6,113	3	1,325	46,079
SOUTHERN	2,058	12,889	15,098	3,659	62,415	6,378	7,929	37,280	1,260	728	42,800	10,184	26,508	105	6,519	235,810
COCHISE	237	1,295	1,858	243	6,841	430	790	3,363	167	82	4,449	967	2,874	4	899	24,499
GRAHAM	113	460	494	68	2,795	17	329	1,514	63	26	1,416	377	902	2	168	8,744
GREENLEE	11	56	64	8	431	2	50	234	7	8	235	53	112	2	32	1,305
PIMA	1,588	10,417	11,754	3,306	48,914	5,504	6,303	30,968	952	572	33,628	8,107	20,677	96	4,961	187,747
SANTA CRUZ	109	661	928	34	3,434	425	457	1,201	71	40	3,072	680	1,943	1	459	13,515

**TABLE 7B**  
**MEDICAL ASSISTANCE PROGRAM**  
**RECIPIENTS**

**CHANGE FROM**  
**FEBRUARY 2011**

	SOBRA WOMAN 133% FPL	SOBRA CHILD	ADULT W/O CHILD 100% FPL	FOSTER CARE	1931 36% FPL	FEDERAL EMERGENCY SERVICES	INFANTS	ADULT W/O CHILD 40% FPL	MEDICAL W/SPEND DOWN	SOBRA WOMAN 100% FPL	SOBRA CHILD 100% FPL	TRANSITIONAL MEDICAL T1 - T4	1931 100% FPL	YATI	OTHER	TOTAL CASES
ARIZONA	253	(241)	345	51	336	(241)	127	375	66	117	1,944	(415)	589	0	236	3,542
REGION																
MARICOPA	155	24	147	26	614	(145)	100	357	20	108	1,672	(339)	540	(8)	145	3,416
NORTHERN	44	(94)	115	4	(111)	(18)	(26)	(8)	43	16	119	(259)	38	(2)	(26)	(165)
APACHE	(2)	10	64	(1)	(7)	(4)	(23)	41	31	(3)	(38)	(65)	(16)	0	7	(6)
COCONINO	9	(12)	22	0	(112)	1	8	(6)	2	3	62	(77)	30	0	(22)	(92)
MOHAVE	27	(102)	31	5	50	(11)	(8)	(23)	3	14	84	(25)	(13)	(1)	(6)	25
NAVAJO	10	10	(2)	0	(42)	(4)	(3)	(20)	7	2	11	(92)	37	(1)	(5)	(92)
CENTRAL	17	(53)	59	11	(286)	(51)	28	(176)	(13)	(8)	14	177	(69)	(3)	58	(295)
GILA	(1)	17	8	(1)	(31)	3	(12)	(17)	(11)	(5)	(26)	7	10	(1)	11	(49)
LA PAZ	4	11	(9)	0	(45)	(4)	0	8	(2)	(1)	2	(4)	(2)	0	(2)	(44)
PINAL	(7)	52	55	9	36	8	60	(5)	(23)	2	92	99	55	(1)	18	450
YAVAPAI	8	(20)	(6)	3	(49)	(8)	22	(58)	18	(4)	(9)	(14)	(39)	(1)	22	(135)
YUMA	13	(113)	11	0	(197)	(50)	(42)	(104)	5	0	(45)	89	(93)	0	9	(517)
SOUTHERN	37	(118)	24	10	119	(27)	25	202	16	1	139	6	80	13	59	586
COCHISE	6	(5)	29	1	(25)	(21)	(6)	0	6	(5)	63	(1)	33	0	(30)	45
GRAHAM	0	(20)	(4)	0	36	(7)	(10)	25	(1)	6	(5)	(26)	1	0	0	(5)
GREENLEE	(2)	3	4	0	2	(1)	3	13	2	0	(1)	(12)	4	0	(2)	13
PIMA	34	(101)	3	5	121	16	32	162	17	5	139	(2)	66	13	104	614
SANTA CRUZ	(1)	5	(8)	4	(15)	(14)	6	2	(8)	(5)	(57)	47	(24)	0	(13)	(81)

**TABLE 7C**  
**MEDICAL ASSISTANCE PROGRAM**  
**RECIPIENTS**

**CHANGE FROM**

**MARCH 2010**

	SOBRA WOMAN 133% FPL	SOBRA CHILD	ADULT W/O CHILD 100% FPL	FOSTER CARE	1931 36% FPL	FEDERAL EMERGENCY SERVICES	INFANTS	ADULT W/O CHILD 40% FPL	MEDICAL W/SPEND DOWN	SOBRA WOMAN 100% FPL	SOBRA CHILD 100% FPL	TRANSITIONAL MEDICAL T1 - T4	3E 1931 100% FPL	YATI	OTHER	TOTAL CASES
ARIZONA	466	3,986	3,718	653	5,048	(20,557)	(4,156)	14,172	365	(154)	2,353	1,097	4,380	7	2,128	13,506
REGION																
MARICOPA	155	2,817	2,417	567	1,091	(16,585)	(2,707)	7,264	253	(56)	1,835	(563)	3,209	(27)	1,100	770
NORTHERN	42	257	144	25	1,025	(563)	(486)	1,573	(47)	23	(851)	63	(723)	(3)	249	728
APACHE	(2)	91	88	(9)	686	(44)	(104)	559	29	15	(689)	73	(489)	(1)	56	259
COCONINO	12	75	74	(3)	130	(29)	(67)	(16)	(12)	(27)	(214)	82	(68)	2	38	(23)
MOHAVE	(6)	42	2	35	169	(348)	(151)	605	(49)	22	75	104	23	1	126	650
NAVAJO	38	49	(20)	2	40	(142)	(164)	425	(15)	13	(23)	(196)	(189)	(5)	29	(158)
CENTRAL	106	183	362	33	1,516	(1,169)	(210)	1,535	0	(41)	582	138	903	9	229	4,176
GILA	(3)	27	19	2	208	(8)	(37)	99	15	(10)	15	(26)	17	0	40	358
LA PAZ	1	46	(5)	(1)	12	(30)	5	91	(11)	(9)	13	(44)	3	0	6	77
PINAL	60	143	107	(15)	1,113	(323)	58	831	11	(12)	691	224	554	4	50	3,496
YAVAPAI	24	(33)	70	48	(83)	(301)	(191)	161	(3)	(2)	124	127	134	6	39	120
YUMA	24	0	171	(1)	266	(507)	(45)	353	(12)	(8)	(261)	(143)	195	(1)	94	125
SOUTHERN	163	729	795	28	1,416	(2,240)	(753)	3,800	159	(80)	787	1,459	991	28	550	7,832
COCHISE	51	109	115	(2)	(1)	(117)	(119)	240	22	(1)	257	17	147	1	66	785
GRAHAM	19	(9)	14	(3)	327	(37)	(62)	216	15	(18)	(109)	(28)	(111)	2	26	242
GREENLEE	2	2	(12)	0	31	(5)	(8)	57	(6)	5	(60)	(11)	(73)	1	0	(77)
PIMA	82	535	604	28	882	(1,942)	(545)	3,111	104	(48)	718	1,452	979	24	440	6,424
SANTA CRUZ	9	92	74	5	177	(139)	(19)	176	24	(18)	(19)	29	49	0	18	458

# CHART 7

## MEDICAL ASSISTANCE PROGRAM

### COMPARISON OF RECIPIENTS

FOR 1999, 2000, 2001, 2002, 2003, 2004, 2005, 2006, 2007, 2008, 2009, 2010, & 2011

Total Recipients

