



DEPARTMENT OF ECONOMIC SECURITY

Your Partner For A Stronger Arizona

State of Arizona

Department of Economic Security

Family Assistance Administration

Statistical Bulletin

April, 2011

Phone: (602) 542-3678

<https://www.azdes.gov/appreports.aspx>

**** STATISTICAL BULLETIN ****
ARIZONA DEPARTMENT OF ECONOMIC SECURITY
FAMILY ASSISTANCE ADMINISTRATION
BOX 6123, PHOENIX, ARIZONA 85005
PHONE (602) 542-3678

APRIL 2011

THIS ISSUE OF THE STATISTICAL BULLETIN COMPARES APRIL 2011 DATA FOR EACH OF THE INDICATED PROGRAMS WITH THE INFORMATION FOR MARCH 2011 AND APRIL 2010. STATEWIDE SUMMARIES OF ACTIVITY WITHIN EACH OF THE SPECIFIC PROGRAMS FOR THIS REPORT PERIOD ARE DISCUSSED BELOW. THE TABLES COMPARE CURRENT AND PRIOR MONTH DATA. DISTRICT AND COUNTY COMPARISONS ARE PROVIDED WITHIN THIS BULLETIN

TANF SUMMARY

COMPARING TO MARCH 2011, APRIL 2011 CASES INCREASED BY 101 (0.55%) TO 18,471. RECIPIENTS INCREASED BY 392 (0.95%) TO 41,781. PAYMENTS INCREASED BY \$26,434 (0.68%) TO \$3,896,915. AVERAGE PAYMENT PER CASE INCREASED BY \$0.27 (0.13%) TO \$0.00. PAYMENT PER RECIPIENT DECREASED BY \$0.24 (0.26%) TO \$93.27.

COMPARING TO APRIL 2010, APRIL 2011 CASES DECREASED BY 16,980 (47.90%). RECIPIENTS DECREASED BY 34,477 (45.21%). TOTAL PAYMENTS DECREASED BY \$3,605,272 (48.06%). THE AVERAGE PAYMENT PER CASE DECREASED BY \$0.65 (0.31%). THE AVERAGE PAYMENT PER RECIPIENT DECREASED BY \$5.11 (5.19%).

CASH ASSISTANCE (CA)

COMPARING TO MARCH 2011, APRIL 2011 CASES INCREASED BY 28 (0.16%) TO 17,319. RECIPIENTS INCREASED BY 151 (0.39%) TO 38,517. PAYMENTS INCREASED BY \$16,888 (0.46%) TO \$3,701,056. AVERAGE PAYMENT PER CASE INCREASED BY \$0.63 (0.30%) TO \$213.70. PAYMENT PER RECIPIENT INCREASED BY \$0.06 (0.06%) TO \$96.09.

COMPARING TO APRIL 2010, APRIL 2011 CASES DECREASED BY 16,351 (48.56%). RECIPIENTS DECREASED BY 32,827 (46.01%). TOTAL PAYMENTS DECREASED BY \$3,499,192 (48.60%). THE AVERAGE PAYMENT PER CASE DECREASED BY \$0.15 (0.07%). THE AVERAGE PAYMENT PER RECIPIENT DECREASED BY \$4.83 (4.79%).

CASH ASSISTANCE UNEMPLOYED PARENT PROGRAM (CA-UP)

COMPARING TO MARCH 2011, APRIL 2011 CASES INCREASED BY 12 (2.22%) TO 552. RECIPIENTS INCREASED BY 104 (5.43%) TO 2,019. PAYMENTS INCREASED BY \$6,051 (4.10%) TO \$153,597. AVERAGE PAYMENT PER CASE INCREASED BY \$5.03 (1.84%) TO \$278.26. PAYMENT PER RECIPIENT DECREASED BY \$0.97 (1.26%) TO \$76.08.

COMPARING TO APRIL 2010, APRIL 2011 CASES DECREASED BY 311 (36.04%). RECIPIENTS DECREASED BY 1,024 (33.65%). TOTAL PAYMENTS DECREASED BY \$87,259 (36.23%). THE AVERAGE PAYMENT PER CASE DECREASED BY \$0.84 (0.30%). THE AVERAGE PAYMENT PER RECIPIENT DECREASED BY \$3.07 (3.88%).

CASH ASSISTANCE WITH GRANT UNDER \$100 (CA-MOE)

COMPARING TO MARCH 2011, APRIL 2011 CASES INCREASED BY 58 (11.18%) TO 577. RECIPIENTS INCREASED BY 125 (11.83%) TO 1,182. PAYMENTS INCREASED BY \$3,351 (8.93%) TO \$40,869. AVERAGE PAYMENT PER CASE DECREASED BY \$1.46 (2.02%) TO \$70.83. AVERAGE PAYMENT PER RECIPIENT DECREASED BY \$0.91 (2.56%) TO \$34.58.

COMPARING TO APRIL 2010, APRIL 2011 CASES DECREASED BY 318 (35.53%). RECIPIENTS DECREASED BY 620 (34.41%). TOTAL PAYMENTS DECREASED BY \$19,176 (31.94%). THE AVERAGE PAYMENT PER CASE INCREASED BY \$3.74 (5.57%). THE AVERAGE PAYMENT PER RECIPIENT INCREASED BY \$1.26 (3.78%).

CASH ASSISTANCE UNEMPLOYED PARENT PROGRAM WITH GRANT UNDER \$100 (CA-UP-MOE) NEW PROGRAM STARTING 7/01

COMPARING TO MARCH 2011, APRIL 2011 CASES INCREASED BY 3 (15.00%) TO 23. RECIPIENTS INCREASED BY 12 (23.53%) TO 63. PAYMENTS INCREASED BY \$144 (11.53%) TO \$1,393. AVERAGE PAYMENT PER CASE DECREASED BY \$1.88 (3.01%) TO \$60.57. PAYMENT PER RECIPIENT DECREASED BY \$2.38 (9.72%) TO \$22.11.

COMPARING TO APRIL 2010, APRIL 2011 CASES INCREASED BY 0 (0.00%). RECIPIENTS DECREASED BY 6 (0.48%). TOTAL PAYMENTS INCREASED BY \$355 (34.20%). THE AVERAGE PAYMENT PER CASE INCREASED BY \$15.44 (34.21%). THE AVERAGE PAYMENT PER RECIPIENT INCREASED BY \$7.07 (47.01%).

TUBERCULOSIS CONTROL PROGRAM (TC)

COMPARING TO MARCH 2011, APRIL 2011 CASES INCREASED BY 0 (0.00%) TO 5. RECIPIENTS INCREASED BY 0 (0.00%) TO 5. PAYMENTS INCREASED BY \$153 (29.59%) TO \$670. AVERAGE PAYMENT PER CASE INCREASED BY \$107.57 (104.03%) TO \$210.97. AVERAGE PAYMENT PER RECIPIENT INCREASED BY \$30.60 (29.59%) TO \$134.00.

COMPARING TO APRIL 2010, APRIL 2011 CASES INCREASED BY 4 (400.00%). RECIPIENTS INCREASED BY 4 (400.00%). TOTAL PAYMENTS INCREASED BY \$497 (287.28%). THE AVERAGE PAYMENT PER CASE INCREASED BY \$37.97 (21.95%). THE AVERAGE PAYMENT PER RECIPIENT DECREASED BY \$39.00 (22.54%).

SUPPLEMENTAL NUTRITION ASSISTANCE PROGRAM (SNAP)

COMPARING TO MARCH 2011, APRIL 2011 SUPPLEMENTAL NUTRITION ASSISTANCE HOUSEHOLDS INCREASED BY 3,203 (0.70%) TO 457,671. PERSONS RECEIVING SUPPLEMENTAL NUTRITION ASSISTANCE INCREASED BY 12,464 (1.20%) TO 1,047,088. TOTAL COUPON ISSUANCE INCREASED BY \$914,823 (0.69%) TO \$132,674,561. THE AVERAGE HOUSEHOLD ALLOTMENT DECREASED BY \$0.03 (0.01%) TO \$289.89. THE AVERAGE ALLOTMENT PER PERSON DECREASED BY \$0.64 (0.50%) TO \$126.71.

COMPARING TO APRIL 2010, APRIL 2011 SUPPLEMENTAL NUTRITION ASSISTANCE HOUSEHOLDS INCREASED BY 16,134 (3.65%). PERSONS RECEIVING SUPPLEMENTAL NUTRITION ASSISTANCE INCREASED BY 26,440 (2.59%). TOTAL COUPON ISSUANCE INCREASED BY \$3,543,437 (2.74%). THE AVERAGE ALLOTMENT PER HOUSEHOLD DECREASED BY \$2.57 (0.88%). THE AVERAGE ALLOTMENT PER PERSON INCREASED BY \$0.19 (0.15%).

MEDICAL ASSISTANCE PROGRAM (MA) NEW TABLE INCLUDES PROP. 204 CATEGORIES

COMPARING TO JANUARY 2010, FEBRUARY 2010 TOTAL RECIPIENTS TOTAL RECIPIENTS DECREASED BY 6,946 (0.59%). SOBRA WOMEN AT 140% FPL DECREASED BY 248 (2.41%). SOBRA CHILDREN DECREASED BY 812 (1.23%). ADULTS W/O CHILD AT 100% INCREASED BY 446 (0.76%). FOSTER CARE INCREASED BY 69 (0.59%). 1931 AT 36% FPL DECREASED BY 4,919 (1.48%). EMERGENCY SERVICES DECREASED BY 5,083 (6.43%). INFANTS DECREASED BY 513 (1.02%). ADULT W/O CHILD AT 140% INCREASED BY 510 (0.33%). MEDICAL W/SPEND DOWN DECREASED BY 201 (3.10%). SOBRA WOMAN AT 100% INCREASED BY 99 (2.63%). SOBRA CHILD AT 100% INCREASED BY 902 (0.40%). TRANSITIONAL MEDICAL INCREASED BY 1,305 (3.04%). 1931 AT 100% INCREASED BY 1,355 (1.16%). YATI INCREASED BY 10 (3.02%). ALL OTHER CATEGORIES INCREASED BY 134 (0.51%).

COMPARING TO APRIL 2010, APRIL 2011 TOTAL RECIPIENTS TOTAL RECIPIENTS INCREASED BY 22,905 (1.93%). SOBRA WOMEN AT 140% FPL INCREASED BY 720 (7.07%). SOBRA CHILDREN INCREASED BY 4,031 (6.19%). ADULTS W/O CHILD AT 100% INCREASED BY 3,552 (5.84%). FOSTER CARE INCREASED BY 767 (6.42%). 1931 AT 36% FPL INCREASED BY 9,846 (3.01%). EMERGENCY SERVICES DECREASED BY 16,508 (24.83%). INFANTS DECREASED BY 4,015 (8.11%). ADULT W/O CHILD AT 140% INCREASED BY 14,372 (9.01%). MEDICAL W/SPEND DOWN INCREASED BY 502 (7.29%). SOBRA WOMAN AT 100% INCREASED BY 31 (0.78%). SOBRA CHILD AT 100% INCREASED BY 4,036 (1.76%). TRANSITIONAL MEDICAL DECREASED BY 768 (1.67%). 1931 AT 100% INCREASED BY 4,102 (3.37%). YATI DECREASED BY 21 (6.10%). ALL OTHER CATEGORIES INCREASED BY 2,258 (8.40%).

TANF SUMMARY

TABLES 1, 1A, 1B, & 1C: ARIZONA 1/

	APRIL 2011							MARCH 2011			APRIL 2010		
	FAMILIES (CASES)	PERSONS (RECIP.)	ADULTS	CHILDREN	TOTAL PAYMENTS	AVERAGE	AVERAGE	FAMILIES (CASES)	PERSONS (RECIP.)	TOTAL PAYMENTS	FAMILIES (CASES)	PERSONS (RECIP.)	TOTAL PAYMENTS
						PAYMENT/ CASE	PAYMENT/ RECIP.						
ARIZONA	18,471	41,781	11,219	30,562	3,896,915	210.97	93.27	101	392	26,434	(16,980)	(34,477)	(3,605,272)
REGION													
MARICOPA	11,388	26,455	7,002	19,453	2,408,007	211.45	91.02	52	227	12,369	(10,447)	(21,427)	(2,188,207)
NORTHERN	1,009	2,247	627	1,620	209,382	207.51	93.18	(12)	(8)	(1,493)	(1,730)	(4,118)	(446,780)
APACHE	44	86	28	58	8,440	191.82	98.14	5	11	870	42	81	8,008
COCONINO	68	170	37	133	15,000	220.59	88.24	(7)	(16)	(664)	(126)	(244)	(24,750)
MOHAVE	583	1,236	347	889	120,222	206.21	97.27	(14)	(26)	(3,410)	(493)	(915)	(95,754)
NAVAJO	314	755	215	540	65,720	209.30	87.05	4	23	1,711	(1,153)	(3,040)	(334,284)
CENTRAL	2,020	4,326	1,116	3,210	426,965	211.37	98.70	(37)	(97)	(7,464)	(1,923)	(3,897)	(398,297)
GILA	403	857	299	558	98,663	244.82	115.13	(20)	(43)	(5,503)	(277)	(576)	(64,768)
LA PAZ	65	130	31	99	12,695	195.31	97.65	(6)	(20)	(1,052)	(100)	(211)	(19,452)
PINAL	855	1,824	418	1,406	171,350	200.41	93.94	(12)	(39)	(2,427)	(796)	(1,703)	(165,433)
YAVAPAI	283	548	125	423	54,922	194.07	100.22	5	(12)	636	(314)	(559)	(58,889)
YUMA	414	967	243	724	89,335	215.79	92.38	(4)	17	882	(436)	(848)	(89,755)
SOUTHERN	4,054	8,753	2,474	6,279	852,561	210.30	97.40	98	270	23,022	(2,880)	(5,035)	(571,988)
COCHISE	334	646	151	495	67,890	203.26	105.09	4	14	999	(397)	(764)	(82,450)
GRAHAM	232	458	154	304	52,551	226.51	114.74	(3)	(6)	319	(21)	(16)	(2,318)
GREENLEE	15	38	11	27	3,295	219.67	86.71	(1)	1	(165)	(1)	5	10
PIMA	3,366	7,366	2,114	5,252	706,373	209.86	95.90	96	251	21,571	(2,348)	(4,083)	(465,818)
SANTA CRUZ	107	245	44	201	22,452	209.83	91.64	2	10	298	(113)	(177)	(21,412)

1/EXCLUDES: PRIOR MONTH NET TOTALS OF 1,294 CASES; 3,281 RECIPIENTS; \$246,176.
 GRANT DIVERSION TOTALS OF: 2,046 CASES; \$1,568,446.
 ZERO PAY TOTALS OF 3,292 CASES; 9,745 RECIPIENTS.
 RRP: 212 CASES; 334 RECIPIENTS; \$43,809.

1/INCLUDES: TANF CHILD ONLY: 7,755 CASES; 13,134 RECIPIENTS; \$1,467,115

	CURRENT MO. CASES	CURRENT MO. RECIP.	CURRENT MO. DOLLARS	PRIOR MO. CASES	PRIOR MO. RECIP.	PRIOR MO. DOLLARS
PASQUA/YAQUI	253	726	\$76,747	18	53	\$2,907
WM APACHE	0	0	\$0	0	0	\$0
SALT RIVER	84	271	\$25,696	4	14	\$597
SAN CARLOS	431	913	\$108,126	28	65	\$5,522
HOPÍ	103	278	\$23,102	6	18	\$376
TOTAL	871	2,188	\$233,671	56	150	\$9,402

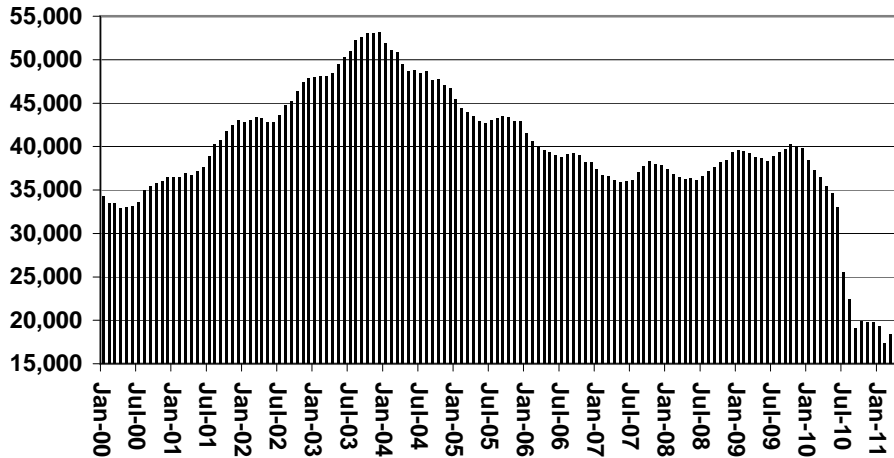
TANF SUMMARY

TABLES 1, 1A, 1B, & 1C

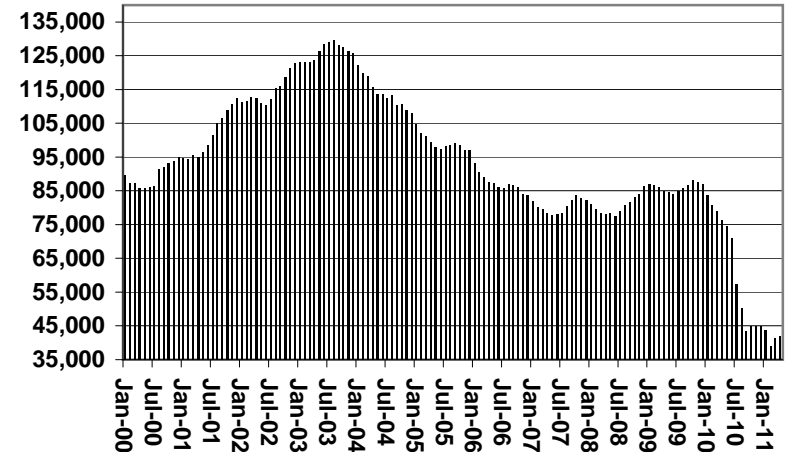
COMPARISON OF CASES, RECIPIENTS, PAYMENTS & AVERAGE PAYMENTS

FOR 2000, 2001, 2002, 2003, 2004, 2005, 2006, 2007, 2008, 2009, 2010, & 2011

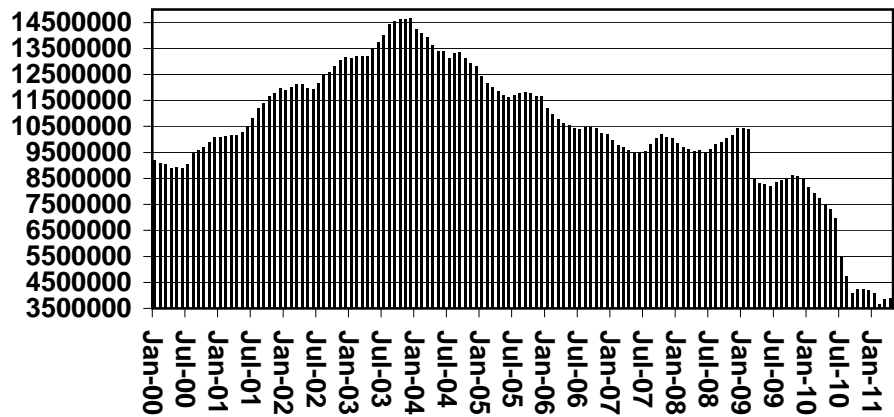
Cases



Recipients



Payments



Average Payments Per Recipient

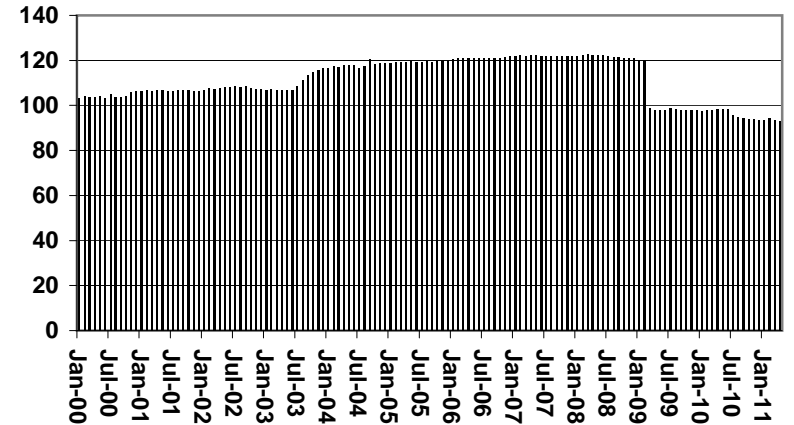


TABLE 1
CASH ASSISTANCE: ARIZONA 1/

	APRIL 2011							CHANGE FROM					
								MARCH 2011			APRIL 2010		
	FAMILIES (CASES)	(RECIP.)	ADULTS	CHILDREN	TOTAL PAYMENTS	AVERAGE PAYMENT/ CASE	AVERAGE PAYMENT/ RECIP.	FAMILIES (CASES)	PERSONS (RECIP.)	TOTAL PAYMENTS	FAMILIES (CASES)	PERSONS (RECIP.)	TOTAL PAYMENTS
ARIZONA	17,319	38,517	10,062	28,455	3,701,056	213.70	96.09	28	151	16,888	(16,351)	(32,827)	(3,499,192)
REGION													
MARICOPA	10,652	24,333	6,306	18,027	2,280,634	214.10	93.73	0	66	7,315	(9,962)	(20,120)	(2,102,185)
NORTHERN	951	2,076	552	1,524	197,963	208.16	95.36	(18)	(32)	(4,010)	(1,720)	(4,109)	(449,402)
APACHE	40	76	24	52	7,893	197.33	103.86	4	10	744	38	71	7,497
COCONINO	62	152	32	120	14,060	226.77	92.50	(9)	(18)	(1,171)	(127)	(251)	(25,220)
MOHAVE	550	1,137	301	836	113,155	205.74	99.52	(14)	(35)	(4,368)	(482)	(892)	(97,001)
NAVAJO	299	711	195	516	62,855	210.22	88.40	1	11	785	(1,149)	(3,037)	(334,678)
CENTRAL	1,928	4,089	1,028	3,061	412,812	214.11	100.96	(36)	(105)	(8,923)	(1,122)	(2,352)	(241,242)
GILA	400	850	296	554	98,455	246.14	115.83	(21)	(46)	(5,477)	(267)	(554)	(63,058)
LA PAZ	58	116	25	91	11,970	206.38	103.19	(5)	(17)	(1,226)	(95)	(204)	(19,021)
PINAL	813	1,713	378	1,335	164,538	202.38	96.05	(10)	(42)	(2,220)	(760)	(1,594)	(159,163)
YAVAPAI	263	498	108	390	51,736	196.71	103.89	7	(7)	890	(301)	(534)	(58,691)
YUMA	394	912	221	691	86,113	218.56	94.42	(6)	12	394	(426)	(812)	(86,880)
SOUTHERN	3,788	8,019	2,176	5,843	809,647	213.74	100.97	81	217	21,222	(2,820)	(4,900)	(560,792)
COCHISE	320	613	140	473	65,846	205.77	107.42	6	15	1,196	(386)	(748)	(81,736)
GRAHAM	229	450	150	300	51,857	226.45	115.24	(3)	(6)	143	(19)	(16)	(2,414)
GREENLEE	14	36	10	26	3,265	233.21	90.69	(2)	(1)	(195)	(2)	3	(20)
PIMA	3,123	6,696	1,836	4,860	667,138	213.62	99.63	77	196	19,265	(2,300)	(3,952)	(454,701)
SANTA CRUZ	102	224	40	184	21,541	211.19	96.17	3	13	813	(113)	(187)	(21,921)

1/EXCLUDES: PRIOR MONTH NET TOTALS OF: 647 CASES; 1,648 RECIPIENTS; \$184,110.
GRANT DIVERSION TOTALS OF: 2,046 CASES; \$1,568,446.
ZERO PAY TOTALS OF 3,278 CASES; 9,684 RECIPIENTS.

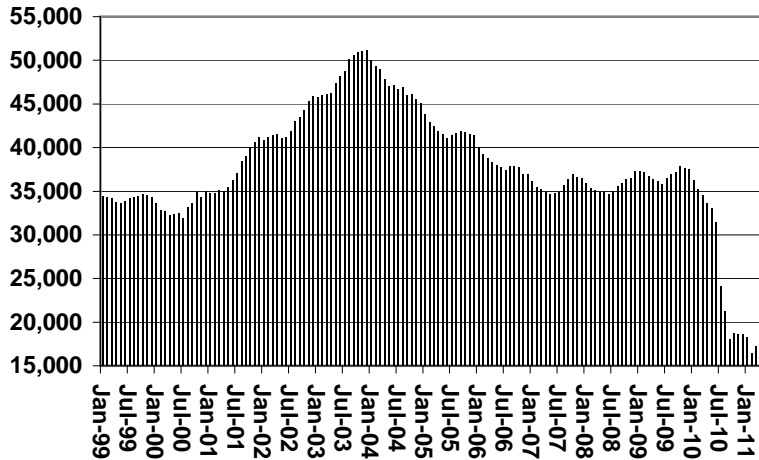
	CURRENT MO. CASES	CURRENT MO. RECIP.	CURRENT MO. DOLLARS	PRIOR MO. CASES	PRIOR MO. RECIP.	PRIOR MO. DOLLARS
PASQUA/YAQUI	243	682	\$73,263	18	53	\$2,907
WM APACHE	0	0	\$0	0	0	\$0
SALT RIVER	84	271	\$25,696	4	14	\$597
SAN CARLOS	431	913	\$108,126	28	65	\$5,522
HOPI	103	278	\$23,102	6	18	\$376
TOTAL	861	2,144	\$230,187	56	150	\$9,402

CASES WITH GRANT UNDER \$100 (SEE TABLE 1B).

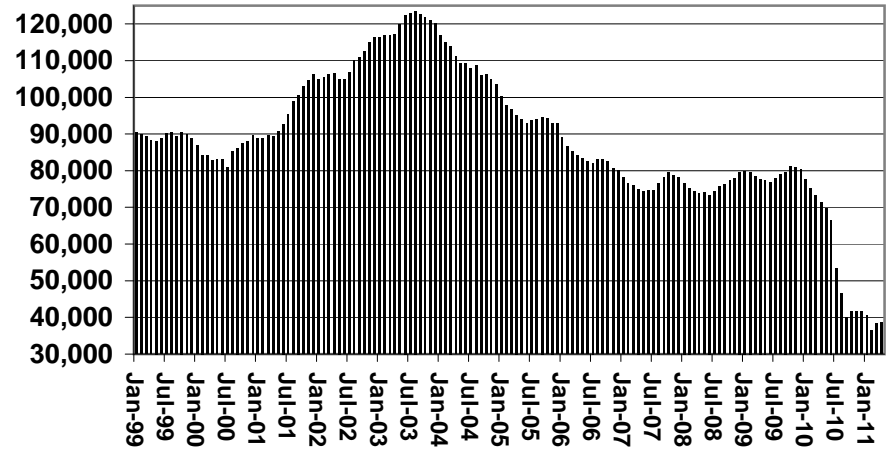
CHART 1

CASH ASSISTANCE PROGRAM COMPARISON OF CASES, RECIPIENTS, PAYMENTS & AVERAGE PAYMENTS FOR 1999, 2000, 2001, 2002, 2003, 2004, 2005, 2006, 2007, 2008, 2009, 2010, & 2011

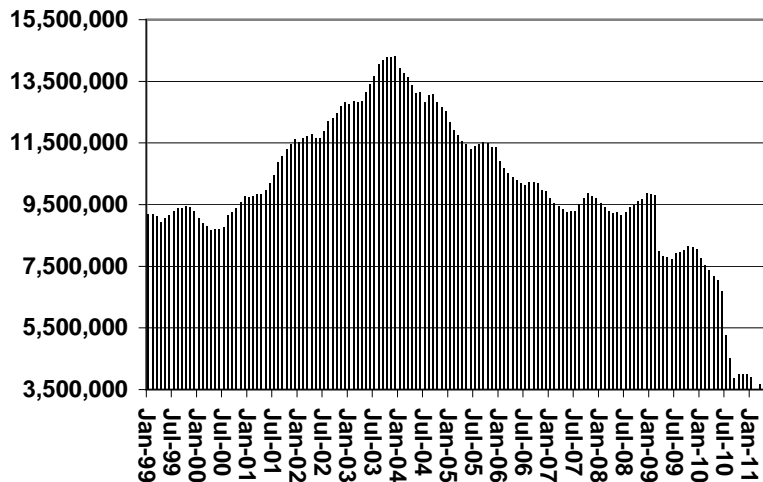
Cases



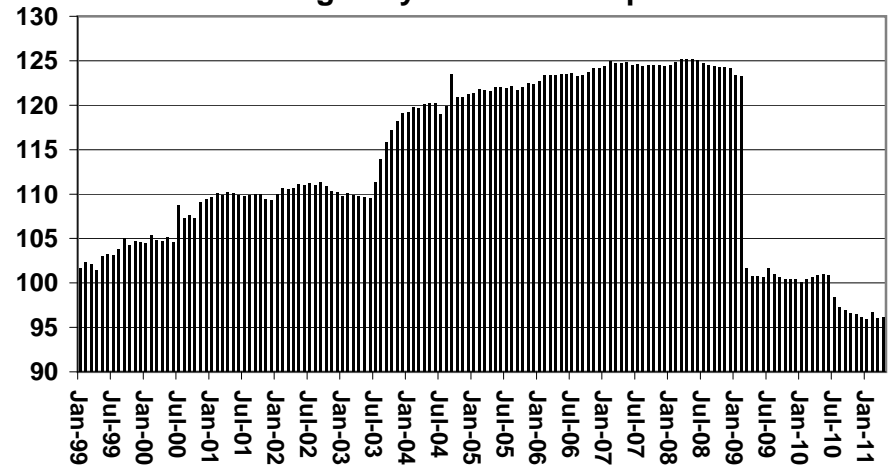
Recipients



Payments



Average Payment Per Recipient



**TABLE 1A
CA-UP**

CASH ASSISTANCE UNEMPLOYED PARENT PROGRAM: ARIZONA 1

	APRIL 2011							CHANGE FROM			APRIL 2010		
								MARCH 2011					
	FAMILIES (CASES)	PERSONS (RECIP.)	ADULTS	CHILDREN	TOTAL PAYMENTS	AVERAGE PAYMENT/ CASE	AVERAGE PAYMENT/ RECIP.	FAMILIES (CASES)	PERSONS (RECIP.)	TOTAL PAYMENTS	FAMILIES (CASES)	PERSONS (RECIP.)	TOTAL PAYMENTS
ARIZONA	552	2,019	827	1,192	153,597	278.26	76.08	12	104	6,051	(311)	(1,024)	(87,259)
REGION													
MARICOPA	355	1,303	497	806	100,525	283.17	77.15	(3)	28	1,463	(264)	(870)	(72,661)
NORTHERN	35	132	64	68	9,618	274.80	72.86	9	36	2,503	13	50	3,738
APACHE	1	3	2	1	278	278.00	92.67	0	0	0	1	3	278
COCONINO	2	11	3	8	628	314.00	57.09	1	5	392	1	9	408
MOHAVE	22	84	42	42	6,267	284.86	74.61	4	18	1,211	7	27	2,306
NAVAJO	10	34	17	17	2,445	244.50	71.91	4	13	900	4	11	746
CENTRAL	38	130	54	76	9,911	260.82	76.24	(2)	(1)	(114)	(25)	(102)	(7,262)
GILA	0	0	0	0	0	0.00	0.00	0	0	0	(5)	(18)	(1,495)
LA PAZ	1	4	2	2	335	335.00	83.75	0	0	179	(1)	(2)	(118)
PINAL	20	66	26	40	4,910	245.50	74.39	(2)	(1)	(293)	(19)	(82)	(5,649)
YAVAPAI	10	32	12	20	2,424	242.40	75.75	1	(1)	(34)	2	9	517
YUMA	7	28	14	14	2,242	320.29	80.07	0	2	300	(10)	(36)	(2,790)
SOUTHERN	124	454	212	242	33,543	270.51	73.88	7	40	1,933	(27)	(75)	(8,801)
COCHISE	6	20	8	12	1,430	238.33	71.50	0	2	146	2	8	422
GRAHAM	2	7	4	3	612	0.00	0.00	1	2	220	1	4	334
GREENLEE	0	0	0	0	0	0.00	0.00	0	0	0	0	0	0
PIMA	113	412	197	215	30,805	272.61	74.77	6	36	2,047	(32)	(98)	(10,042)
SANTA CRUZ	3	15	3	12	696	232.00	0.00	0	0	(480)	2	11	485

1/EXCLUDES: PRIOR MONTH NET TOTALS OF: 68 CASES; 285 RECIPIENTS; \$26,286.
GRANT DIVERSION TOTALS OF: 0 CASES; \$0.
ZERO PAY TOTALS OF 14 CASES; 61 RECIPIENTS.

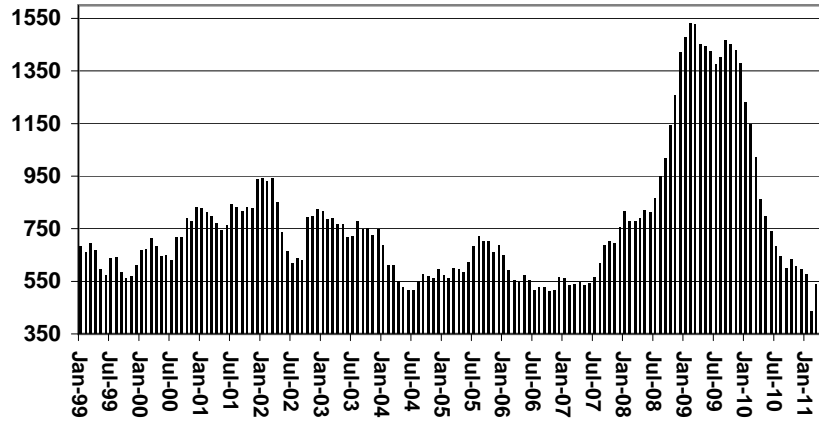
CASES WITH GRANT UNDER \$100 (SEE TABLE 1C).

	CURRENT MO. CASES	CURRENT MO. RECIP.	CURRENT MO. DOLLARS	PRIOR MO. CASES	PRIOR MO. RECIP.	PRIOR MO. DOLLARS
PASQUAYAYQUI	10	44	\$3,484	0	0	\$0
WM APACHE	0	0	\$0	0	0	\$0
SALT RIVER	0	0	\$0	0	0	\$0
SAN CARLOS	0	0	\$0	0	0	\$0
HOPÍ	0	0	\$0	0	0	\$0
TOTAL	10	44	\$3,484	0	0	\$0

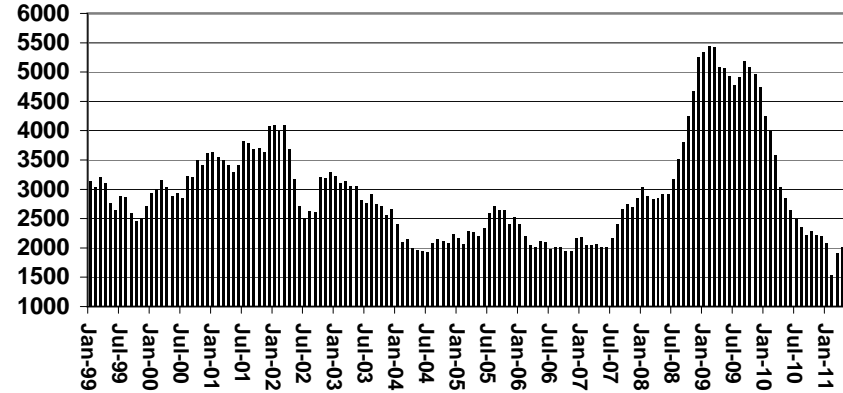
CHART 1A

CASH ASSISTANCE UNEMPLOYED PARENT PROGRAM COMPARISON OF CASES, RECIPIENTS, PAYMENTS & AVERAGE PAYMENTS FOR 1999, 2000, 2001, 2002, 2003, 2004, 2005, 2006, 2007, 2008, 2009, 2010, & 2011

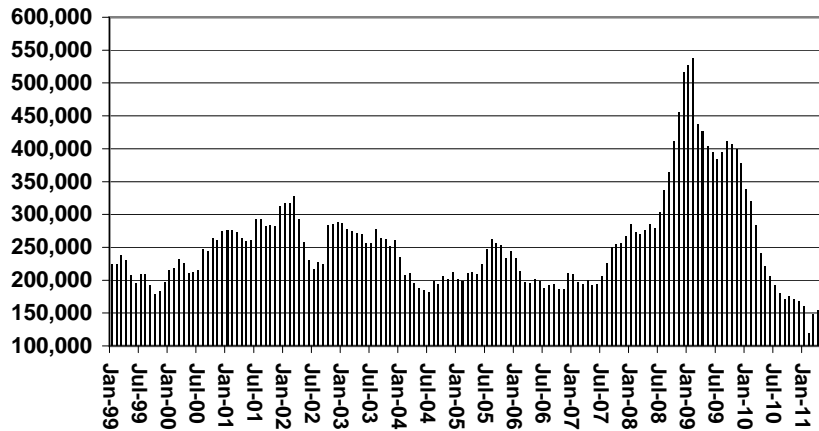
Cases



Recipients



Payments



Average Payment Per Recipient

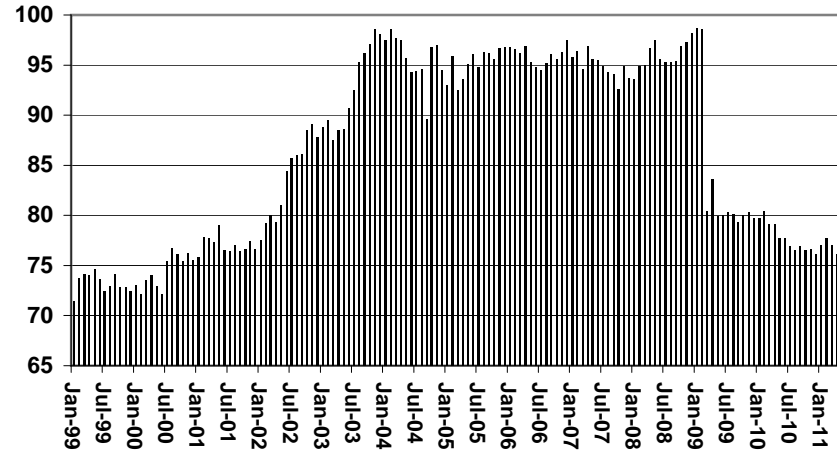


TABLE 1B 1/

**CASH ASSISTANCE: ARIZONA
CASES WITH GRANT UNDER \$100**

	APRIL 2011							CHANGE FROM			APRIL 2010		
					AVERAGE	AVERAGE							
	FAMILIES (CASES)	PERSONS (RECIP.)	ADULTS	CHILDREN	TOTAL PAYMENTS	PAYMENT/ CASE	PAYMENT/ RECIP.	FAMILIES (CASES)	PERSONS (RECIP.)	TOTAL PAYMENTS	FAMILIES (CASES)	PERSONS (RECIP.)	TOTAL PAYMENTS
ARIZONA	577	1,182	313	869	40,869	70.83	34.58	58	125	3,351	(318)	(620)	(19,176)
REGION													
MARICOPA	361	766	185	581	25,670	71.11	33.51	50	112	3,288	(221)	(436)	(13,639)
NORTHERN	23	39	11	28	1,801	78.30	46.18	(3)	(12)	14	(23)	(59)	(1,116)
APACHE	3	7	2	5	269	89.67	38.43	1	1	126	3	7	233
COCONINO	4	7	2	5	312	78.00	44.57	1	(3)	115	0	(2)	62
MOHAVE	11	15	4	11	800	72.73	53.33	(4)	(9)	(253)	(18)	(50)	(1,059)
NAVAJO	5	10	3	7	420	84.00	42.00	(1)	(1)	26	(8)	(14)	(352)
CENTRAL	53	105	34	71	4,207	79.38	40.07	0	9	133	(40)	(61)	(1,882)
GILA	3	7	3	4	208	69.33	29.71	1	3	(26)	(5)	(4)	(215)
LA PAZ	6	10	4	6	390	65.00	39.00	(1)	(3)	(5)	(4)	(5)	(313)
PINAL	22	45	14	31	1,902	86.45	42.27	1	9	175	(15)	(16)	(519)
YAVAPAI	10	18	5	13	762	76.20	42.33	(2)	(1)	(164)	(15)	(34)	(715)
YUMA	12	25	8	17	945	78.75	37.80	1	1	153	(1)	(2)	(120)
SOUTHERN	140	272	83	189	9,191	65.65	33.79	11	16	(84)	(34)	(64)	(2,539)
COCHISE	8	13	3	10	614	76.75	47.23	(2)	(3)	(343)	(13)	(24)	(1,136)
GRAHAM	1	1	0	1	82	82.00	82.00	(1)	(2)	(44)	(3)	(4)	(238)
GREENLEE	1	2	1	1	30	30.00	15.00	1	2	30	1	2	30
PIMA	128	250	78	172	8,250	64.45	33.00	14	22	308	(17)	(37)	(1,219)
SANTA CRUZ	2	6	1	5	215	107.50	35.83	(1)	(3)	(35)	(2)	(1)	24

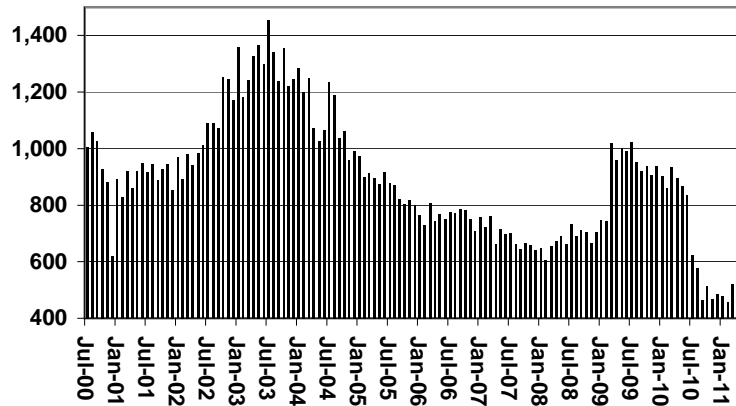
EXCLUDES: PRIOR MONTH NET TOTALS OF 539 CASES; 1,202 RECIPIENTS; \$33,537.

CHART 1B

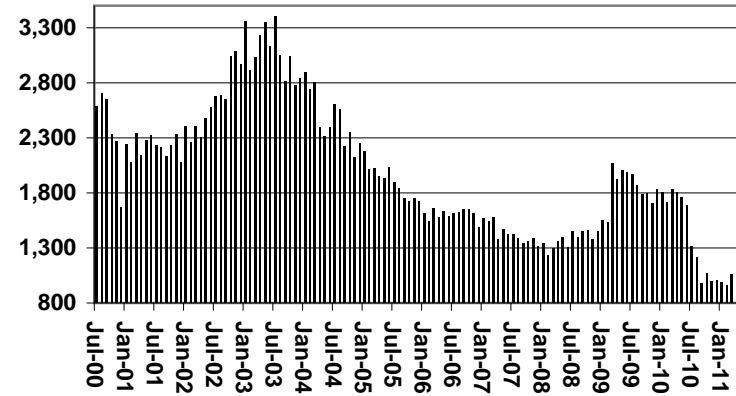
CASH ASSISTANCE PROGRAM CASES WITH GRANT UNDER \$100

FOR 1999, 2000, 2001, 2002, 2003, 2004, 2005, 2006, 2007, 2008, 2009, 2010, & 2011

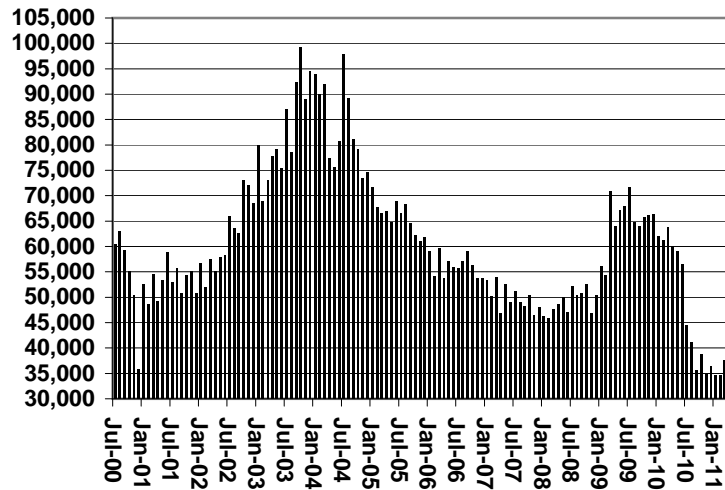
Cases



Recipients



Payments



Average Payment Per Recipient

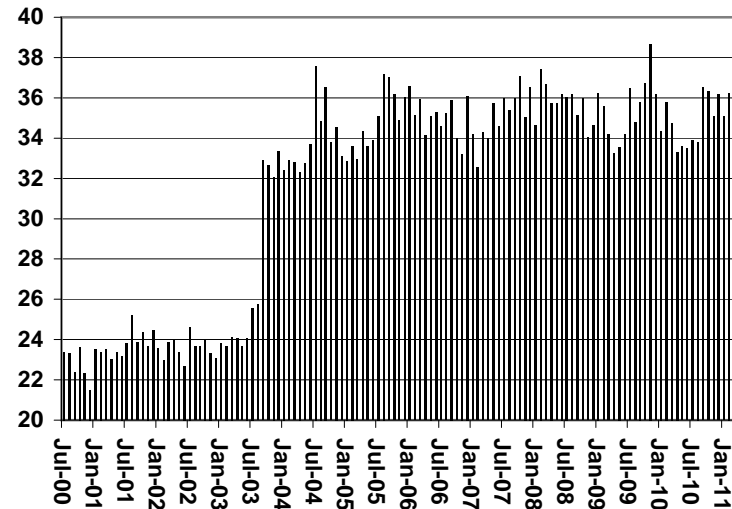


TABLE 1C 1/

CASH ASSISTANCE UNEMPLOYED PARENT PROGRAM: ARIZONA
 CASES WITH GRANT UNDER \$100

	CHANGE FROM												
	APRIL 2011							MARCH 2011			APRIL 2010		
	FAMILIES (CASES)	PERSONS (RECIP.)	ADULTS	CHILDREN	TOTAL PAYMENTS	AVERAGE PAYMENT/ CASE	AVERAGE PAYMENT/ RECIP.	FAMILIES (CASES)	PERSONS (RECIP.)	TOTAL PAYMENTS	FAMILIES (CASES)	PERSONS (RECIP.)	TOTAL PAYMENTS
ARIZONA	23	63	17	46	1,393	60.57	22.11	3	12	144	0	(6)	355
REGION													
MARICOPA	20	53	14	39	1,178	58.90	22.23	5	21	303	0	(1)	278
NORTHERN	0	0	0	0	0	0.00	0.00	0	0	0	0	0	0
APACHE	0	0	0	0	0	0.00	0.00	0	0	0	0	0	0
COCONINO	0	0	0	0	0	0.00	0.00	0	0	0	0	0	0
MOHAVE	0	0	0	0	0	0.00	0.00	0	0	0	0	0	0
NAVAJO	0	0	0	0	0	0.00	0.00	0	0	0	0	0	0
CENTRAL	1	2	0	2	35	35.00	17.50	(1)	(6)	(110)	(1)	(9)	(67)
GILA	0	0	0	0	0	0.00	0.00	0	0	0	0	0	0
LA PAZ	0	0	0	0	0	0.00	0.00	0	0	0	0	0	0
PINAL	0	0	0	0	0	0.00	0.00	(1)	(5)	(89)	(2)	(11)	(102)
YAVAPAI	0	0	0	0	0	0.00	0.00	(1)	(3)	(56)	0	0	0
YUMA	1	2	0	2	35	35.00	17.50	1	2	35	1	2	35
SOUTHERN	2	8	3	5	180	90.00	22.50	(1)	(3)	(49)	1	4	144
COCHISE	0	0	0	0	0	0.00	0.00	0	0	0	0	0	0
GRAHAM	0	0	0	0	0	0.00	0.00	0	0	0	0	0	0
GREENLEE	0	0	0	0	0	0.00	0.00	0	0	0	0	0	0
PIMA	2	8	3	5	180	90.00	22.50	(1)	(3)	(49)	1	4	144
SANTA CRUZ	0	0	0	0	0	0.00	0.00	0	0	0	0	0	0

EXCLUDES: PRIOR MONTH NET TOTALS OF 40 CASES; 146 RECIPIENTS; \$2,243.

CHART 1C

CASH ASSISTANCE UNEMPLOYED PARENT PROGRAM

CASES WITH GRANT UNDER \$100

FOR 1999, 2000, 2001, 2002, 2003, 2004, 2005, 2006, 2007, 2008, 2009, 2010, & 2011

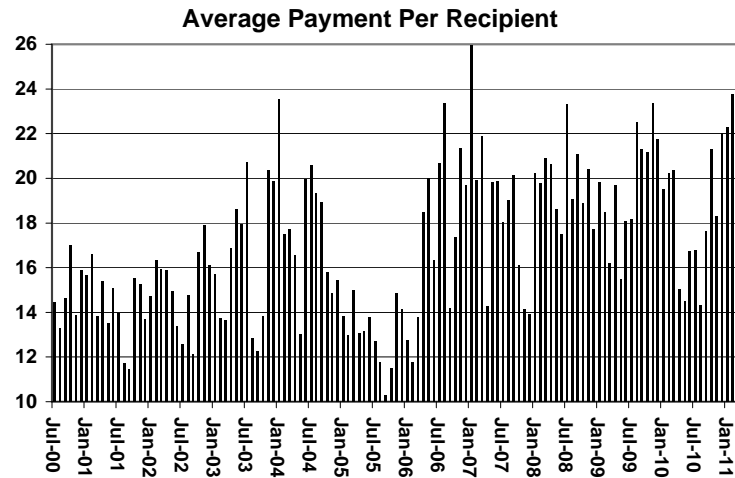
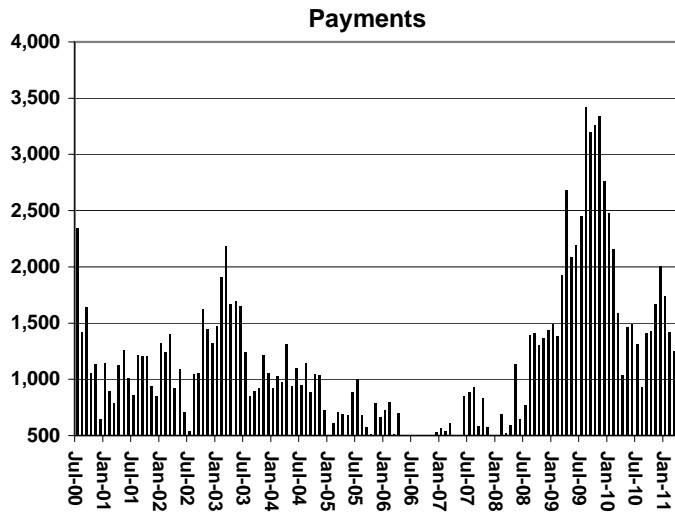
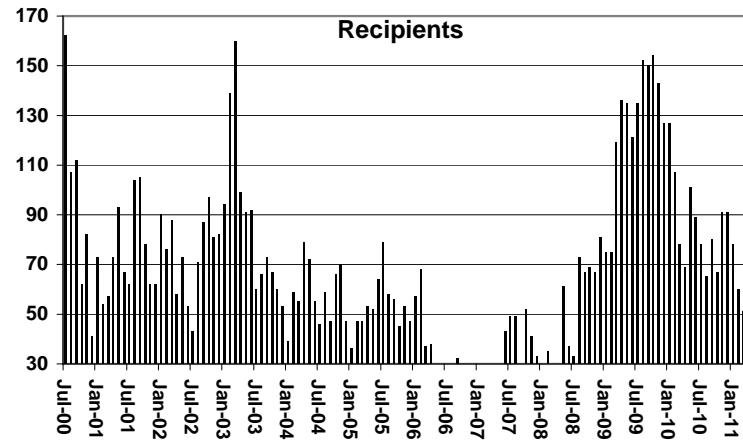
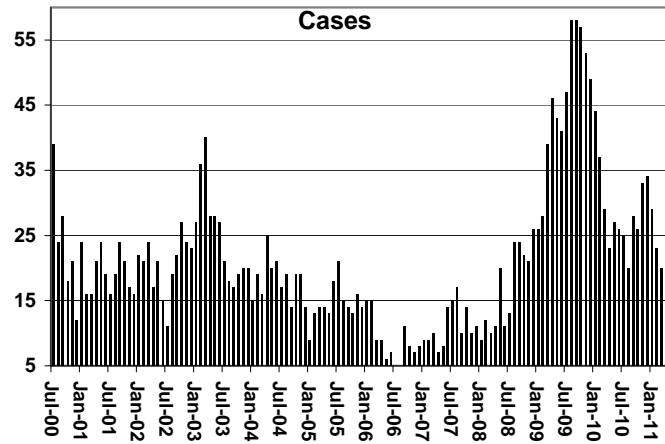


TABLE 4

TUBERCULOSIS CONTROL: ARIZONA 1/

	APRIL 2011					CHANGE FROM					
						MARCH 2011			APRIL 2010		
	NUMBER OF CASES	PERSONS (RECIP.)	TOTAL PAYMENTS	AVERAGE PAYMENT/ CASE	AVERAGE PAYMENT/ RECIP.	NUMBER OF CASES	PERSONS (RECIP.)	TOTAL PAYMENTS	NUMBER OF CASES	PERSONS (RECIP.)	TOTAL PAYMENTS
ARIZONA	5	5	670	134.00	134.00	0	0	153	4	4	497
REGION											
MARICOPA	5	5	670	134.00	134.00	0	0	153	4	4	497
NORTHERN	0	0	0	0.00	0.00	0	0	0	0	0	0
APACHE	0	0	0	0.00	0.00	0	0	0	0	0	0
COCONINO	0	0	0	0.00	0.00	0	0	0	0	0	0
MOHAVE	0	0	0	0.00	0.00	0	0	0	0	0	0
NAVAJO	0	0	0	0.00	0.00	0	0	0	0	0	0
CENTRAL	0	0	0	0.00	0.00	0	0	0	0	0	0
GILA	0	0	0	0.00	0.00	0	0	0	0	0	0
LA PAZ	0	0	0	0.00	0.00	0	0	0	0	0	0
PINAL	0	0	0	0.00	0.00	0	0	0	0	0	0
YAVAPAI	0	0	0	0.00	0.00	0	0	0	0	0	0
YUMA	0	0	0	0.00	0.00	0	0	0	0	0	0
SOUTHERN	0	0	0	0.00	0.00	0	0	0	0	0	0
COCHISE	0	0	0	0.00	0.00	0	0	0	0	0	0
GRAHAM	0	0	0	0.00	0.00	0	0	0	0	0	0
GREENLEE	0	0	0	0.00	0.00	0	0	0	0	0	0
PIMA	0	0	0	0.00	0.00	0	0	0	0	0	0
SANTA CRUZ	0	0	0	0.00	0.00	0	0	0	0	0	0

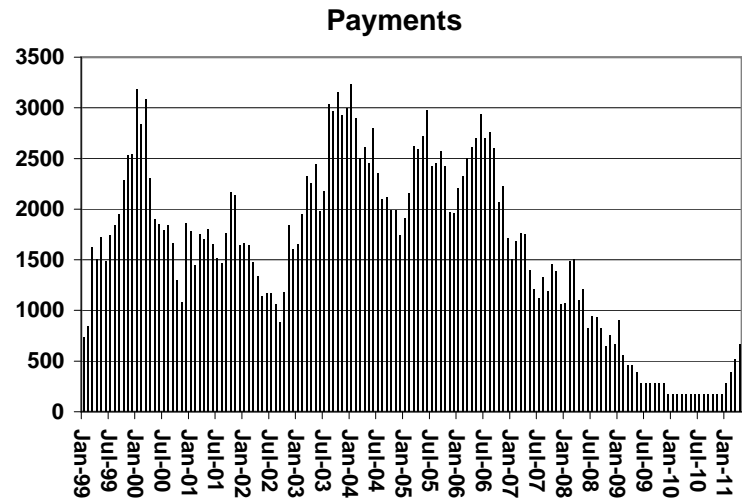
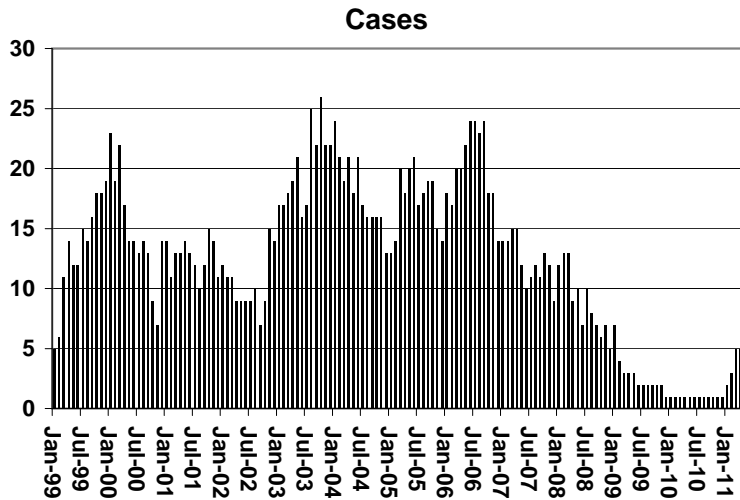
1/EXCLUDES: PRIOR MONTH NET TOTALS OF : 3 CASES; 3 RECIPIENTS; \$1,275.

CHART 4

TUBERCULOSIS CONTROL PROGRAM

COMPARISON OF CASES, PAYMENTS & AVERAGE PAYMENTS

FOR 1999, 2000, 2001, 2002, 2003, 2004, 2005, 2006, 2007, 2008, 2009, 2010, & 2011



Average Payment Per Case

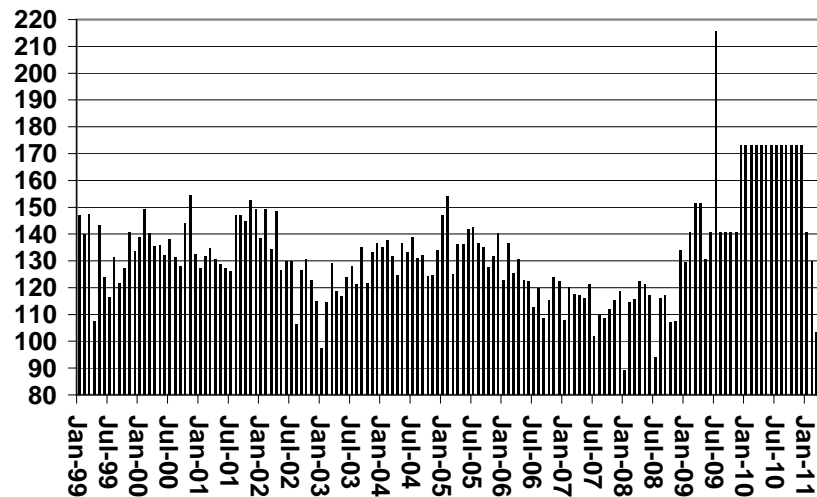


TABLE 6

SUPPLEMENTAL NUTRITION ASSISTANCE PROGRAM: ARIZONA 1

	CHANGE FROM												
	APRIL 2011				MARCH 2011			APRIL 2010					
	HOUSEHOLDS	PERSONS	ADULTS	CHILDREN	TOTAL PAYMENTS ISSUANCE	AVERAGE PAYMT./ HOUSEHOLD	AVERAGE PAYMT./ PERSON	HOUSEHOLDS	PERSONS	TOTAL PAYMENTS ISSUANCE	HOUSEHOLDS	PERSONS	TOTAL PAYMENTS ISSUANCE
ARIZONA	457,671	1,047,088	541,193	505,895	132,674,561	289.89	126.71	3,203	12,464	914,823	16,134	26,440	3,543,437
REGION													
MARICOPA	244,383	564,288	272,774	291,514	71,961,559	294.46	127.53	2,066	8,320	676,131	2,225	3,659	1,169,950
NORTHERN	52,879	127,376	71,785	55,591	15,908,832	300.85	124.90	202	641	(7,228)	2,279	2,292	373,075
APACHE	9,996	27,290	14,897	12,393	3,376,289	337.76	123.72	56	95	473	468	4	757,965
COCONINO	9,432	23,232	12,369	10,863	2,879,252	305.26	123.93	58	184	13,602	115	(7)	(299,391)
MOHAVE	20,366	43,044	25,933	17,111	5,442,320	267.23	126.44	46	245	(17,569)	1,029	1,595	650,652
NAVAJO	13,085	33,810	18,586	15,224	4,210,971	321.82	124.55	42	117	(3,734)	667	700	(736,151)
CENTRAL	59,989	139,837	76,227	63,610	17,258,206	287.69	123.42	341	1,641	110,784	4,089	8,072	462,335
GILA	6,117	13,222	7,764	5,458	1,729,553	282.75	130.81	(14)	41	(1,857)	476	883	(11,015)
LA PAZ	2,018	4,094	2,384	1,710	528,410	261.85	129.07	(20)	(3)	(2,519)	106	185	23,866
PINAL	21,996	53,876	28,012	25,864	6,813,495	309.76	126.47	205	801	49,544	1,669	3,657	82,160
YAVAPAI	14,895	30,011	18,086	11,925	3,730,919	250.48	124.32	32	159	4,961	993	1,550	209,215
YUMA	14,963	38,634	19,981	18,653	4,455,829	297.79	115.33	138	643	60,655	845	1,797	158,109
SOUTHERN	100,420	215,587	120,407	95,180	27,545,964	274.31	127.77	594	1,862	135,136	7,541	12,417	1,538,077
COCHISE	10,692	22,888	13,179	9,709	2,836,333	265.28	123.92	46	95	(10,503)	810	1,313	134,108
GRAHAM	3,475	7,961	4,440	3,521	1,019,576	293.40	128.07	3	14	(6,046)	249	263	113,414
GREENLEE	507	1,098	625	473	140,235	276.60	127.72	0	(6)	958	(15)	(75)	17,867
PIMA	81,337	171,849	96,212	75,637	22,154,803	272.38	128.92	531	1,651	143,860	6,145	10,137	1,248,171
SANTA CRUZ	4,409	11,791	5,951	5,840	1,395,017	316.40	118.31	14	108	6,867	352	779	24,517

1/EXCLUDES: PRIOR MONTH NET TOTALS OF : 13,186 CASES; 33,159 RECIPIENTS; \$2,574,860.

AGED CANCELATIONS: 10,802 CASES; 12,922 RECIPIENTS; \$630,813.

SNAP CONVERSIONS: 0 CASES; 0 RECIPIENTS; \$0.

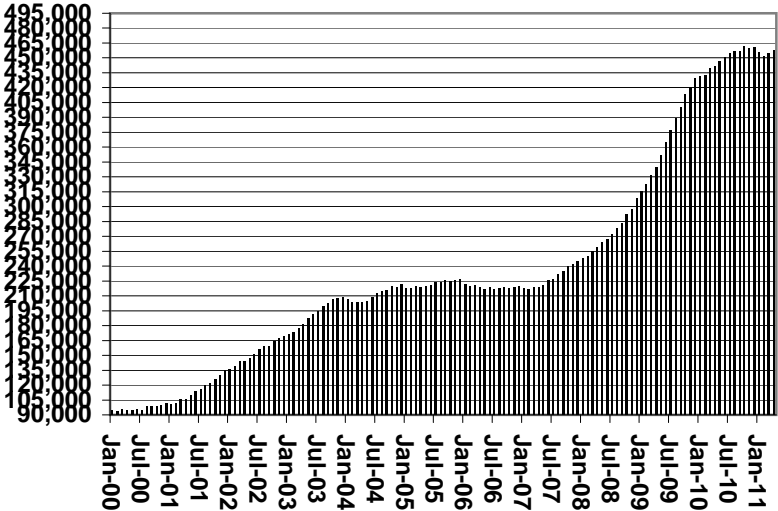
SNAP CHILD ONLY: 58,145 CASES; 137,558 RECIPIENTS; \$20,780,772.

SNAP ZERO PAY: 10,786 CASES; 43,846 RECIPIENTS.

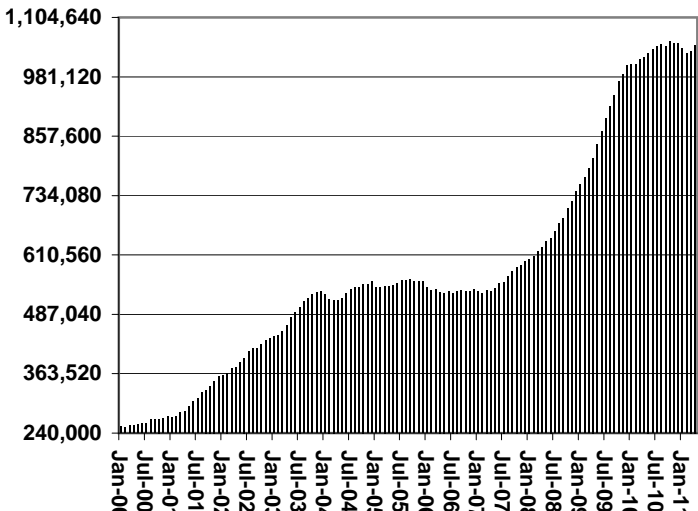
CHART 6

SUPPLEMENTAL NUTRITION ASSISTANCE PROGRAM (SNAP) COMPARISON OF HOUSEHOLDS, RECIPIENTS, PAYMENTS & AVERAGE PAYMENTS FOR 1999, 2000, 2001, 2002, 2003, 2004, 2005, 2006, 2007, 2008, 2009, 2010, & 2011

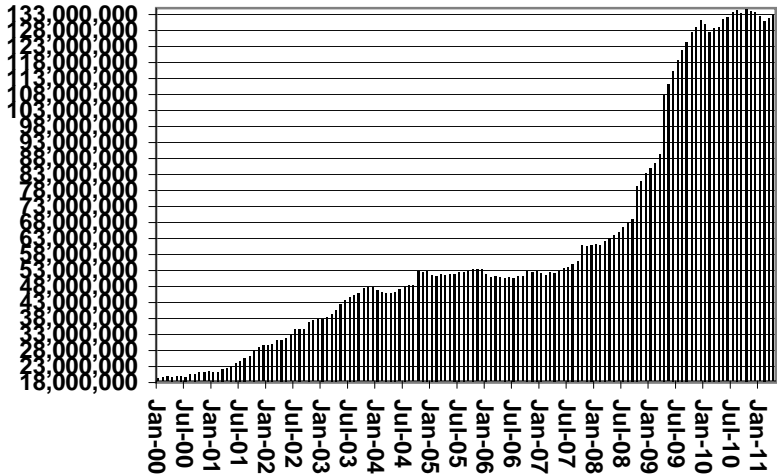
Households



Recipients



Payments



Average Payment Per Household

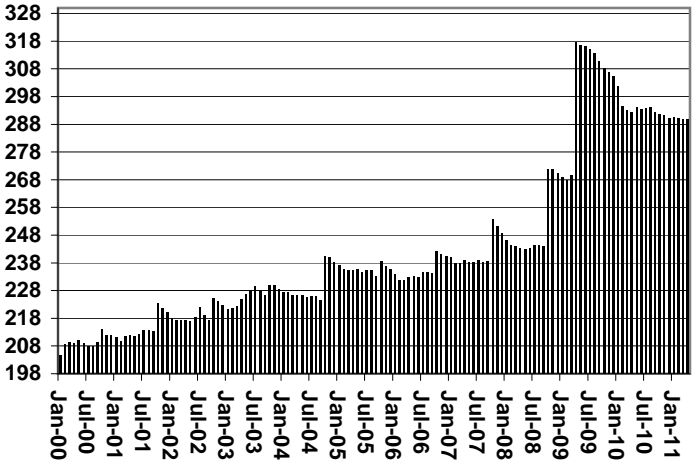


TABLE 7A
MEDICAL ASSISTANCE PROGRAM
RECIPIENTS

APRIL 2011

	SOBRA WOMAN 133% FPL	SOBRA CHILD	ADULT W/O CHILD 100% FPL	FOSTER CARE	1931 36% FPL	FEDERAL EMERGENCY SERVICES	INFANTS	ADULT W/O CHILD 40% FPL	MEDICAL W/SPEND DOWN	SOBRA WOMAN 100% FPL	SOBRA CHILD 100% FPL	TRANSITIONAL MEDICAL T1 - T4	1931 100% FPL	YATI	OTHER	TOTAL CASES
ARIZONA	10,911	69,147	64,372	12,707	337,198	49,979	45,497	173,921	7,392	4,004	233,732	45,085	125,725	323	29,143	1,209,136
REGION																
MARICOPA	5,869	39,856	31,820	6,849	187,881	38,896	27,019	88,550	4,004	2,109	137,674	21,843	65,554	176	15,081	673,181
NORTHERN	1,265	7,401	7,804	655	43,892	1,075	4,619	25,837	1,028	574	23,468	4,882	14,983	16	3,061	140,560
APACHE	201	1,442	1,136	35	11,408	82	893	5,907	191	111	4,162	857	2,677	0	424	29,526
COCONINO	315	1,467	1,655	129	8,456	415	1,071	4,686	155	118	4,840	1,064	3,057	12	416	27,856
MOHAVE	395	2,212	3,149	345	11,608	373	1,403	8,141	473	203	8,553	1,754	5,369	3	1,640	45,621
NAVAJO	354	2,280	1,864	146	12,420	205	1,252	7,103	209	142	5,913	1,207	3,880	1	581	37,557
CENTRAL	1,714	9,176	9,672	1,510	42,577	3,677	5,977	22,175	1,046	571	29,361	8,402	18,542	37	4,442	158,879
GILA	115	679	786	100	4,619	127	500	2,653	108	34	1,972	448	1,355	2	382	13,880
LA PAZ	30	263	265	19	1,259	142	145	839	17	10	702	136	416	0	161	4,404
PINAL	605	4,136	2,984	594	18,469	1,192	2,282	8,735	306	196	10,993	2,197	6,477	16	1,356	60,538
YAVAPAI	417	1,646	2,785	496	7,468	1,155	1,147	5,213	327	120	6,328	1,657	4,158	17	1,232	34,166
YUMA	547	2,452	2,852	301	10,762	1,061	1,903	4,735	288	211	9,366	3,964	6,136	2	1,311	45,891
SOUTHERN	2,063	12,714	15,076	3,693	62,848	6,331	7,882	37,359	1,314	750	43,229	9,958	26,646	94	6,559	236,516
COCHISE	231	1,253	1,914	245	6,815	420	795	3,363	176	97	4,464	926	2,865	3	902	24,469
GRAHAM	119	439	466	67	2,738	18	339	1,487	73	25	1,419	385	894	2	174	8,645
GREENLEE	8	56	63	8	437	2	50	239	11	6	249	39	106	2	35	1,311
PIMA	1,601	10,340	11,718	3,340	49,471	5,468	6,256	31,080	1,004	577	34,000	7,912	20,806	86	4,974	188,633
SANTA CRUZ	104	626	915	33	3,387	423	442	1,190	50	45	3,097	696	1,975	1	474	13,458

TABLE 7B
MEDICAL ASSISTANCE PROGRAM
RECIPIENTS

CHANGE FROM

MARCH 2011

	SOBRA WOMAN 133% FPL	SOBRA CHILD	ADULT W/O CHILD 100% FPL	FOSTER CARE	1931 36% FPL	FEDERAL EMERGENCY SERVICES	INFANTS	ADULT W/O CHILD 40% FPL	MEDICAL W/SPEND DOWN	SOBRA WOMAN 100% FPL	SOBRA CHILD 100% FPL	TRANSITIONAL MEDICAL T1 - T4	1931 100% FPL	YATI	OTHER	TOTAL CASES
ARIZONA	188	(349)	251	131	3,001	203	(455)	911	175	168	2,827	(808)	625	(21)	112	6,959
REGION																
MARICOPA	177	37	308	78	2,059	265	(399)	728	51	101	1,870	(157)	244	(9)	101	5,454
NORTHERN	(9)	(101)	(9)	2	53	(26)	(10)	138	76	32	164	(89)	64	1	(17)	269
APACHE	(5)	(70)	8	1	(98)	6	(7)	10	21	4	54	(1)	45	0	0	(32)
COCONINO	0	6	(54)	2	129	(1)	6	58	31	15	(5)	(24)	11	0	(14)	160
MOHAVE	(6)	(11)	24	0	(115)	(28)	(6)	(33)	12	21	133	(103)	49	1	13	(49)
NAVAJO	2	(26)	13	(1)	137	(3)	(3)	103	12	(8)	(18)	39	(41)	0	(16)	190
CENTRAL	15	(110)	(26)	17	456	11	1	(34)	(6)	13	364	(336)	179	(2)	(12)	530
GILA	0	(11)	(35)	2	83	2	1	(20)	(9)	4	(17)	13	(12)	1	4	6
LA PAZ	(3)	(9)	(3)	2	17	13	(4)	(21)	(2)	(2)	(17)	(14)	(4)	0	0	(47)
PINAL	21	(28)	30	4	227	(11)	10	81	(19)	14	291	(155)	190	(1)	8	662
YAVAPAI	(3)	(66)	(11)	6	150	(8)	(3)	(10)	20	(7)	2	56	(18)	(1)	(10)	97
YUMA	0	4	(7)	3	(21)	15	(3)	(64)	4	4	105	(236)	23	(1)	(14)	(188)
SOUTHERN	5	(175)	(22)	34	433	(47)	(47)	79	54	22	429	(226)	138	(11)	40	706
COCHISE	(6)	(42)	56	2	(26)	(10)	5	0	9	15	15	(41)	(9)	(1)	3	(30)
GRAHAM	6	(21)	(28)	(1)	(57)	1	10	(27)	10	(1)	3	8	(8)	0	6	(99)
GREENLEE	(3)	0	(1)	0	6	0	0	5	4	(2)	14	(14)	(6)	0	3	6
PIMA	13	(77)	(36)	34	557	(36)	(47)	112	52	5	372	(195)	129	(10)	13	886
SANTA CRUZ	(5)	(35)	(13)	(1)	(47)	(2)	(15)	(11)	(21)	5	25	16	32	0	15	(57)

TABLE 7C
MEDICAL ASSISTANCE PROGRAM
RECIPIENTS

CHANGE FROM

APRIL 2010

	SOBRA WOMAN 133% FPL	SOBRA CHILD	ADULT W/O CHILD 100% FPL	FOSTER CARE	1931 36% FPL	FEDERAL EMERGENCY SERVICES	INFANTS	ADULT W/O CHILD 40% FPL	MEDICAL W/SPEND DOWN	SOBRA WOMAN 100% FPL	SOBRA CHILD 100% FPL	TRANSITIONAL MEDICAL T1 - T4	3E 1931 100% FPL	YATI	OTHER	TOTAL CASES
ARIZONA	720	4,031	3,552	767	9,846	(16,508)	(4,015)	14,372	502	31	4,036	(768)	4,102	(21)	2,258	22,905
REGION																
MARICOPA	335	3,194	2,343	661	4,313	(13,448)	(2,761)	7,544	291	104	2,713	(1,452)	2,747	(35)	1,228	7,777
NORTHERN	57	124	198	21	1,207	(485)	(431)	1,633	47	33	(611)	(327)	(471)	(3)	202	1,194
APACHE	(2)	(8)	92	(7)	606	(30)	(94)	479	38	15	(533)	4	(376)	(1)	52	235
COCONINO	12	95	49	1	116	16	(50)	43	21	(5)	(148)	(46)	(4)	2	21	123
MOHAVE	7	12	69	30	205	(325)	(148)	611	(40)	17	114	(57)	89	0	113	697
NAVAJO	40	25	(12)	(3)	280	(146)	(139)	500	28	6	(44)	(228)	(180)	(4)	16	139
CENTRAL	118	128	303	38	2,228	(942)	(122)	1,546	(51)	(35)	853	(41)	942	7	249	5,221
GILA	(8)	5	(32)	(1)	327	(10)	(26)	97	(6)	(15)	(15)	14	(15)	1	45	361
LA PAZ	(2)	43	(9)	2	25	(5)	(2)	49	(7)	(4)	(23)	(54)	(9)	0	15	19
PINAL	95	128	166	(19)	1,433	(235)	83	894	(24)	(1)	894	110	642	5	54	4,225
YAVAPAI	24	(124)	55	58	164	(263)	(150)	232	(2)	(4)	80	132	77	4	45	328
YUMA	9	76	123	(2)	279	(429)	(27)	274	(12)	(11)	(83)	(243)	247	(3)	90	288
SOUTHERN	210	585	708	47	2,098	(1,633)	(701)	3,649	215	(71)	1,081	1,052	884	10	579	8,713
COCHISE	42	71	190	(2)	80	(108)	(95)	251	41	15	257	(58)	101	1	71	857
GRAHAM	32	(39)	(21)	(6)	259	(35)	(42)	187	19	(17)	(117)	45	(132)	1	28	162
GREENLEE	(1)	1	(10)	0	42	(6)	(10)	63	1	2	(27)	(26)	(75)	1	2	(43)
PIMA	128	475	481	51	1,542	(1,352)	(529)	2,982	152	(59)	936	1,056	891	7	447	7,208
SANTA CRUZ	9	77	68	4	175	(132)	(25)	166	2	(12)	32	35	99	0	31	529

CHART 7

MEDICAL ASSISTANCE PROGRAM

COMPARISON OF RECIPIENTS

FOR 1999, 2000, 2001, 2002, 2003, 2004, 2005, 2006, 2007, 2008, 2009, 2010, & 2011

Total Recipients

