



DEPARTMENT OF ECONOMIC SECURITY

Your Partner For A Stronger Arizona

State of Arizona

Department of Economic Security

Family Assistance Administration

Statistical Bulletin

May, 2011

Phone: (602) 542-3678

<https://www.azdes.gov/appreports.aspx>

**** STATISTICAL BULLETIN ****
ARIZONA DEPARTMENT OF ECONOMIC SECURITY
FAMILY ASSISTANCE ADMINISTRATION
BOX 6123, PHOENIX, ARIZONA 85005
PHONE (602) 542-3678

MAY 2011

THIS ISSUE OF THE STATISTICAL BULLETIN COMPARES MAY 2011 DATA FOR EACH OF THE INDICATED PROGRAMS WITH THE INFORMATION FOR APRIL 2011 AND MAY 2010. STATEWIDE SUMMARIES OF ACTIVITY WITHIN EACH OF THE SPECIFIC PROGRAMS FOR THIS REPORT PERIOD ARE DISCUSSED BELOW. THE TABLES COMPARE CURRENT AND PRIOR MONTH DATA. DISTRICT AND COUNTY COMPARISONS ARE PROVIDED WITHIN THIS BULLETIN

TANF SUMMARY

COMPARING TO APRIL 2011, MAY 2011 CASES DECREASED BY 98 (0.53%) TO 18,373. RECIPIENTS DECREASED BY 94 (0.22%) TO 41,687. PAYMENTS DECREASED BY \$30,086 (0.77%) TO \$3,866,829. AVERAGE PAYMENT PER CASE DECREASED BY \$0.51 (0.24%) TO \$0.00. PAYMENT PER RECIPIENT DECREASED BY \$0.51 (0.55%) TO \$92.76.

COMPARING TO MAY 2010, MAY 2011 CASES DECREASED BY 16,313 (47.03%). RECIPIENTS DECREASED BY 32,809 (44.04%). TOTAL PAYMENTS DECREASED BY \$3,465,852 (47.27%). THE AVERAGE PAYMENT PER CASE DECREASED BY \$0.94 (0.44%). THE AVERAGE PAYMENT PER RECIPIENT DECREASED BY \$5.67 (5.76%).

CASH ASSISTANCE (CA)

COMPARING TO APRIL 2011, MAY 2011 CASES DECREASED BY 89 (0.51%) TO 17,230. RECIPIENTS DECREASED BY 94 (0.24%) TO 38,423. PAYMENTS DECREASED BY \$27,231 (0.74%) TO \$3,673,825. AVERAGE PAYMENT PER CASE DECREASED BY \$0.48 (0.22%) TO \$213.22. PAYMENT PER RECIPIENT DECREASED BY \$0.47 (0.49%) TO \$95.62.

COMPARING TO MAY 2010, MAY 2011 CASES DECREASED BY 15,763 (47.78%). RECIPIENTS DECREASED BY 31,370 (44.95%). TOTAL PAYMENTS DECREASED BY \$3,377,371 (47.90%). THE AVERAGE PAYMENT PER CASE DECREASED BY \$0.50 (0.23%). THE AVERAGE PAYMENT PER RECIPIENT DECREASED BY \$5.41 (5.35%).

CASH ASSISTANCE UNEMPLOYED PARENT PROGRAM (CA-UP)

COMPARING TO APRIL 2011, MAY 2011 CASES DECREASED BY 21 (3.80%) TO 531. RECIPIENTS DECREASED BY 57 (2.82%) TO 1,962. PAYMENTS DECREASED BY \$3,443 (2.24%) TO \$150,154. AVERAGE PAYMENT PER CASE INCREASED BY \$4.52 (1.63%) TO \$282.78. PAYMENT PER RECIPIENT INCREASED BY \$0.45 (0.60%) TO \$76.53.

COMPARING TO MAY 2010, MAY 2011 CASES DECREASED BY 267 (33.46%). RECIPIENTS DECREASED BY 884 (31.06%). TOTAL PAYMENTS DECREASED BY \$70,884 (32.07%). THE AVERAGE PAYMENT PER CASE INCREASED BY \$5.80 (2.09%). THE AVERAGE PAYMENT PER RECIPIENT DECREASED BY \$1.14 (1.46%).

CASH ASSISTANCE WITH GRANT UNDER \$100 (CA-MOE)

COMPARING TO APRIL 2011, MAY 2011 CASES INCREASED BY 19 (3.29%) TO 596. RECIPIENTS INCREASED BY 69 (5.84%) TO 1,251. PAYMENTS INCREASED BY \$861 (2.11%) TO \$41,730. AVERAGE PAYMENT PER CASE DECREASED BY \$0.81 (1.14%) TO \$70.02. AVERAGE PAYMENT PER RECIPIENT DECREASED BY \$1.22 (3.53%) TO \$33.36.

COMPARING TO MAY 2010, MAY 2011 CASES DECREASED BY 272 (31.34%). RECIPIENTS DECREASED BY 505 (28.76%). TOTAL PAYMENTS DECREASED BY \$17,251 (29.25%). THE AVERAGE PAYMENT PER CASE INCREASED BY \$2.07 (3.05%). THE AVERAGE PAYMENT PER RECIPIENT DECREASED BY \$0.23 (0.68%).

CASH ASSISTANCE UNEMPLOYED PARENT PROGRAM WITH GRANT UNDER \$100 (CA-UP-MOE) NEW PROGRAM STARTING 7/01

COMPARING TO APRIL 2011, MAY 2011 CASES DECREASED BY 7 (30.43%) TO 16. RECIPIENTS DECREASED BY 12 (19.05%) TO 51. PAYMENTS DECREASED BY \$273 (19.60%) TO \$1,120. AVERAGE PAYMENT PER CASE INCREASED BY \$9.43 (15.57%) TO \$70.00. PAYMENT PER RECIPIENT DECREASED BY \$0.15 (0.68%) TO \$21.96.

COMPARING TO MAY 2010, MAY 2011 CASES DECREASED BY 11 (40.74%). RECIPIENTS DECREASED BY 50 (3.59%). TOTAL PAYMENTS DECREASED BY \$346 (23.60%). THE AVERAGE PAYMENT PER CASE INCREASED BY \$15.70 (28.91%). THE AVERAGE PAYMENT PER RECIPIENT INCREASED BY \$7.45 (51.34%).

TUBERCULOSIS CONTROL PROGRAM (TC)

COMPARING TO APRIL 2011, MAY 2011 CASES INCREASED BY 0 (0.00%) TO 5. RECIPIENTS INCREASED BY 0 (0.00%) TO 5. PAYMENTS INCREASED BY \$0 (0.00%) TO \$670. AVERAGE PAYMENT PER CASE INCREASED BY \$76.46 (57.06%) TO \$210.46. AVERAGE PAYMENT PER RECIPIENT INCREASED BY \$0.00 (0.00%) TO \$134.00.

COMPARING TO MAY 2010, MAY 2011 CASES INCREASED BY 4 (400.00%). RECIPIENTS INCREASED BY 4 (400.00%). TOTAL PAYMENTS INCREASED BY \$497 (287.28%). THE AVERAGE PAYMENT PER CASE INCREASED BY \$37.46 (21.65%). THE AVERAGE PAYMENT PER RECIPIENT DECREASED BY \$39.00 (22.54%).

SUPPLEMENTAL NUTRITION ASSISTANCE PROGRAM (SNAP)

COMPARING TO APRIL 2011, MAY 2011 SUPPLEMENTAL NUTRITION ASSISTANCE HOUSEHOLDS INCREASED BY 5,022 (1.10%) TO 462,693. PERSONS RECEIVING SUPPLEMENTAL NUTRITION ASSISTANCE INCREASED BY 16,346 (1.56%) TO 1,063,434. TOTAL COUPON ISSUANCE INCREASED BY \$1,904,427 (1.44%) TO \$134,578,988. THE AVERAGE HOUSEHOLD ALLOTMENT INCREASED BY \$0.97 (0.33%) TO \$290.86. THE AVERAGE ALLOTMENT PER PERSON DECREASED BY \$0.16 (0.12%) TO \$126.55.

COMPARING TO MAY 2010, MAY 2011 SUPPLEMENTAL NUTRITION ASSISTANCE HOUSEHOLDS INCREASED BY 16,323 (3.66%). PERSONS RECEIVING SUPPLEMENTAL NUTRITION ASSISTANCE INCREASED BY 32,359 (3.14%). TOTAL COUPON ISSUANCE INCREASED BY \$3,210,656 (2.44%). THE AVERAGE ALLOTMENT PER HOUSEHOLD DECREASED BY \$3.44 (1.17%). THE AVERAGE ALLOTMENT PER PERSON DECREASED BY \$0.86 (0.67%).

MEDICAL ASSISTANCE PROGRAM (MA) NEW TABLE INCLUDES PROP. 204 CATEGORIES

COMPARING TO JANUARY 2010, FEBRUARY 2010 TOTAL RECIPIENTS TOTAL RECIPIENTS DECREASED BY 6,946 (0.59%). SOBRA WOMEN AT 140% FPL DECREASED BY 248 (2.41%). SOBRA CHILDREN DECREASED BY 812 (1.23%). ADULTS W/O CHILD AT 100% INCREASED BY 446 (0.76%). FOSTER CARE INCREASED BY 69 (0.59%). 1931 AT 36% FPL DECREASED BY 4,919 (1.48%). EMERGENCY SERVICES DECREASED BY 5,083 (6.43%). INFANTS DECREASED BY 513 (1.02%). ADULT W/O CHILD AT 140% INCREASED BY 510 (0.33%). MEDICAL W/SPEND DOWN DECREASED BY 201 (3.10%). SOBRA WOMAN AT 100% INCREASED BY 99 (2.63%). SOBRA CHILD AT 100% INCREASED BY 902 (0.40%). TRANSITIONAL MEDICAL INCREASED BY 1,305 (3.04%). 1931 AT 100% INCREASED BY 1,355 (1.16%). YATI INCREASED BY 10 (3.02%). ALL OTHER CATEGORIES INCREASED BY 134 (0.51%).

COMPARING TO MAY 2010, MAY 2011 TOTAL RECIPIENTS TOTAL RECIPIENTS INCREASED BY 25,124 (2.12%). SOBRA WOMEN AT 140% FPL INCREASED BY 602 (5.87%). SOBRA CHILDREN INCREASED BY 3,866 (6.00%). ADULTS W/O CHILD AT 100% INCREASED BY 4,726 (7.95%). FOSTER CARE INCREASED BY 864 (7.22%). 1931 AT 36% FPL INCREASED BY 5,363 (1.60%). EMERGENCY SERVICES DECREASED BY 13,321 (20.86%). INFANTS DECREASED BY 3,996 (8.11%). ADULT W/O CHILD AT 140% INCREASED BY 12,256 (7.57%). MEDICAL W/SPEND DOWN DECREASED BY 444 (6.30%). SOBRA WOMAN AT 100% INCREASED BY 314 (8.19%). SOBRA CHILD AT 100% INCREASED BY 7,982 (3.51%). TRANSITIONAL MEDICAL DECREASED BY 1,622 (3.57%). 1931 AT 100% INCREASED BY 6,260 (5.21%). YATI DECREASED BY 10 (2.91%). ALL OTHER CATEGORIES INCREASED BY 2,284 (8.44%).

TANF SUMMARY

TABLES 1, 1A, 1B, & 1C: ARIZONA 1/

	MAY 2011							APRIL 2011			MAY 2010		
	FAMILIES (CASES)	PERSONS (RECIP.)	ADULTS	CHILDREN	TOTAL PAYMENTS	AVERAGE	AVERAGE	FAMILIES (CASES)	PERSONS (RECIP.)	TOTAL PAYMENTS	FAMILIES (CASES)	PERSONS (RECIP.)	TOTAL PAYMENTS
						PAYMENT/ CASE	PAYMENT/ RECIP.						
ARIZONA	18,373	41,687	11,191	30,496	3,866,829	210.46	92.76	(98)	(94)	(30,086)	(16,313)	(32,809)	(3,465,852)
REGION													
MARICOPA	11,280	26,229	6,928	19,301	2,379,560	210.95	90.72	(108)	(226)	(28,447)	(10,201)	(20,830)	(2,139,157)
NORTHERN	1,043	2,352	663	1,689	215,446	206.56	91.60	34	105	6,064	(1,669)	(3,914)	(432,477)
APACHE	45	91	34	57	8,478	188.40	93.16	1	5	38	(55)	(128)	(15,547)
COCONINO	66	171	39	132	15,113	228.98	88.38	(2)	1	113	(112)	(196)	(21,039)
MOHAVE	615	1,328	372	956	125,650	204.31	94.62	32	92	5,428	(433)	(742)	(84,948)
NAVAJO	317	762	218	544	66,205	208.85	86.88	3	7	485	(1,069)	(2,848)	(310,943)
CENTRAL	1,992	4,270	1,102	3,168	418,823	210.25	98.09	(28)	(56)	(8,142)	(1,784)	(3,533)	(367,898)
GILA	400	864	305	559	97,963	244.91	113.38	(3)	7	(700)	(258)	(515)	(58,360)
LA PAZ	71	149	38	111	13,996	197.13	93.93	6	19	1,301	(88)	(175)	(16,348)
PINAL	842	1,774	410	1,364	167,448	198.87	94.39	(13)	(50)	(3,902)	(705)	(1,500)	(148,741)
YAVAPAI	275	538	119	419	52,623	191.36	97.81	(8)	(10)	(2,299)	(303)	(523)	(56,983)
YUMA	404	945	230	715	86,793	214.83	91.84	(10)	(22)	(2,542)	(430)	(820)	(87,466)
SOUTHERN	4,058	8,836	2,498	6,338	853,000	210.20	96.54	4	83	439	(2,659)	(4,532)	(526,320)
COCHISE	340	673	155	518	69,478	204.35	103.24	6	27	1,588	(338)	(620)	(68,927)
GRAHAM	238	477	159	318	54,021	226.98	113.25	6	19	1,470	(3)	28	763
GREENLEE	17	42	13	29	3,845	226.18	91.55	2	4	550	(9)	(10)	(1,404)
PIMA	3,362	7,424	2,132	5,292	704,972	209.69	94.96	(4)	58	(1,401)	(2,215)	(3,776)	(437,958)
SANTA CRUZ	101	220	39	181	20,684	204.79	94.02	(6)	(25)	(1,768)	(94)	(154)	(18,794)

1/EXCLUDES: PRIOR MONTH NET TOTALS OF 1,053 CASES; 2,633 RECIPIENTS; \$207,547.

GRANT DIVERSION TOTALS OF: 2,166 CASES; \$1,678,436.

ZERO PAY TOTALS OF 3,890 CASES; 11,588 RECIPIENTS.

RRP: 191 CASES; 288 RECIPIENTS; \$37,037.

1/INCLUDES: TANF CHILD ONLY: 7,694 CASES; 13,094 RECIPIENTS; \$1,453,940.

	CURRENT MO. CASES	CURRENT MO. RECIP.	CURRENT MO. DOLLARS	PRIOR MO. CASES	PRIOR MO. RECIP.	PRIOR MO. DOLLARS
PASQUA/YAQUI	248	715	\$76,372	12	39	\$2,532
WM APACHE	0	0	\$0	0	0	\$0
SALT RIVER	78	250	\$23,972	5	16	\$1,273
SAN CARLOS	438	948	\$110,575	32	79	\$5,607
HOPÍ	103	288	\$23,820	6	22	\$1,168
TOTAL	867	2,201	\$234,739	55	156	\$10,580

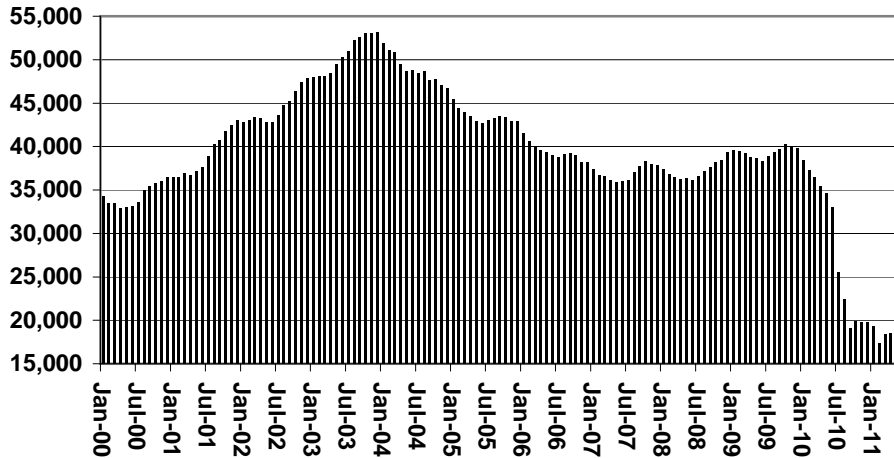
TANF SUMMARY

TABLES 1, 1A, 1B, & 1C

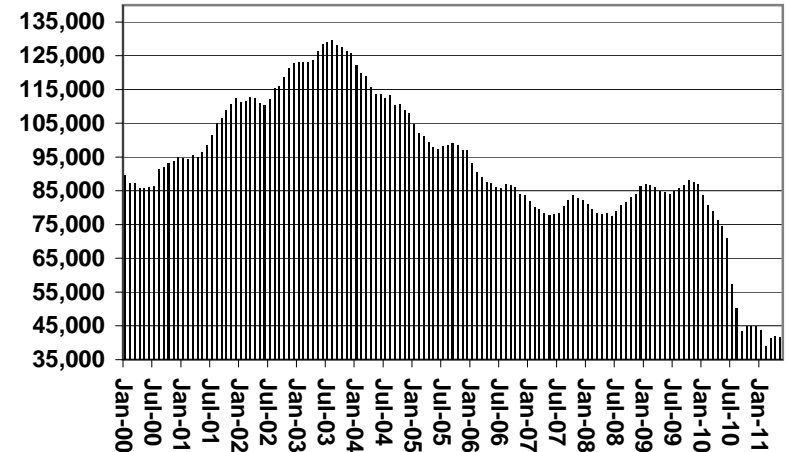
COMPARISON OF CASES, RECIPIENTS, PAYMENTS & AVERAGE PAYMENTS

FOR 2000, 2001, 2002, 2003, 2004, 2005, 2006, 2007, 2008, 2009, 2010, & 2011

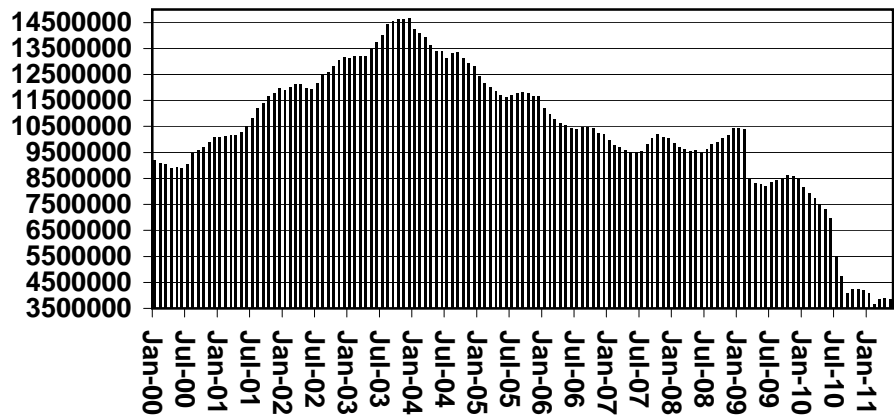
Cases



Recipients



Payments



Average Payments Per Recipient

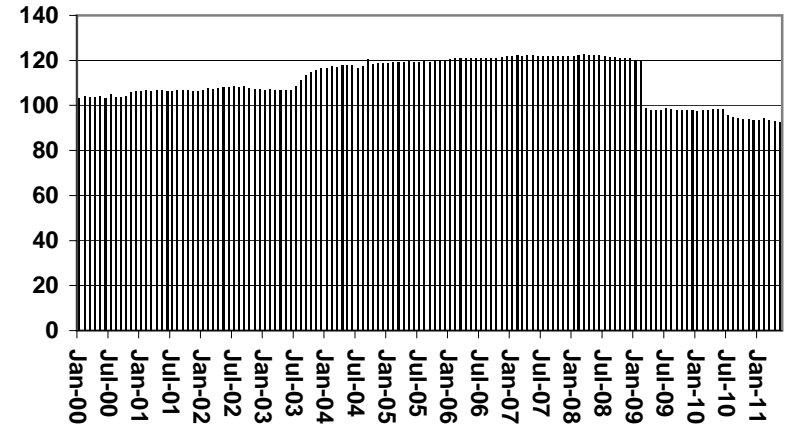


TABLE 1
CASH ASSISTANCE: ARIZONA 1/

	MAY 2011							CHANGE FROM			MAY 2010		
	FAMILIES (CASES)	(RECIP.)	ADULTS	CHILDREN	TOTAL PAYMENTS	AVERAGE PAYMENT/ CASE	AVERAGE PAYMENT/ RECIP.	FAMILIES (CASES)	PERSONS (RECIP.)	TOTAL PAYMENTS	FAMILIES (CASES)	PERSONS (RECIP.)	TOTAL PAYMENTS
	ARIZONA	17,230	38,423	10,027	28,396	3,673,825	213.22	95.62	(89)	(94)	(27,231)	(15,763)	(31,370)
REGION													
MARICOPA	10,584	24,209	6,269	17,940	2,259,876	213.52	93.35	(68)	(124)	(20,758)	(9,750)	(19,607)	(2,062,334)
NORTHERN	974	2,144	572	1,572	202,365	207.77	94.39	23	68	4,402	(1,668)	(3,940)	(436,789)
APACHE	42	82	29	53	7,838	186.62	95.59	2	6	(55)	(56)	(133)	(15,960)
COCONINO	61	153	32	121	14,107	231.26	92.20	(1)	1	47	(113)	(203)	(21,662)
MOHAVE	571	1,196	313	883	117,120	205.11	97.93	21	59	3,965	(432)	(754)	(87,423)
NAVAJO	300	713	198	515	63,300	211.00	88.78	1	2	445	(1,067)	(2,850)	(311,744)
CENTRAL	1,898	4,016	1,008	3,008	404,394	213.06	100.70	(12)	(34)	(3,607)	(1,013)	(2,104)	(218,197)
GILA	398	859	303	556	97,856	245.87	113.92	(2)	9	(599)	(246)	(490)	(56,497)
LA PAZ	62	125	28	97	12,625	203.63	101.00	4	9	655	(89)	(185)	(16,917)
PINAL	799	1,661	368	1,293	160,875	201.35	96.85	(14)	(52)	(3,663)	(678)	(1,429)	(144,783)
YAVAPAI	256	490	103	387	49,938	195.07	101.91	(7)	(8)	(1,798)	(296)	(516)	(57,204)
YUMA	383	881	206	675	83,100	216.97	94.32	(11)	(31)	(3,013)	(420)	(800)	(85,576)
SOUTHERN	3,774	8,054	2,178	5,876	807,190	213.88	100.22	(14)	35	(2,457)	(2,616)	(4,403)	(517,271)
COCHISE	329	649	145	504	68,168	207.20	105.04	9	36	2,322	(329)	(602)	(68,029)
GRAHAM	233	464	153	311	53,075	227.79	114.39	4	14	1,218	(1)	31	689
GREENLEE	17	42	13	29	3,845	226.18	91.55	3	6	580	(9)	(10)	(1,404)
PIMA	3,100	6,696	1,831	4,865	662,247	213.63	98.90	(23)	0	(4,891)	(2,185)	(3,669)	(429,767)
SANTA CRUZ	95	203	36	167	19,855	209.00	97.81	(7)	(21)	(1,686)	(92)	(153)	(18,760)

1/EXCLUDES: PRIOR MONTH NET TOTALS OF: 512 CASES; 1,309 RECIPIENTS; \$159,573.
GRANT DIVERSION TOTALS OF: 2,166 CASES; \$1,678,436.
ZERO PAY TOTALS OF 3,877 CASES; 11,534 RECIPIENTS.

	CURRENT MO. CASES	CURRENT MO. RECIP.	CURRENT MO. DOLLARS	PRIOR MO. CASES	PRIOR MO. RECIP.	PRIOR MO. DOLLARS
PASQUA/YAQUI	238	673	\$72,867	12	39	\$2,532
WM APACHE	0	0	\$0	0	0	\$0
SALT RIVER	78	250	\$23,972	5	16	\$1,273
SAN CARLOS	438	948	\$110,575	32	79	\$5,607
HOPI	103	288	\$23,820	6	22	\$1,168
TOTAL	857	2,159	\$231,234	55	156	\$10,580

CASES WITH GRANT UNDER \$100 (SEE TABLE 1B).

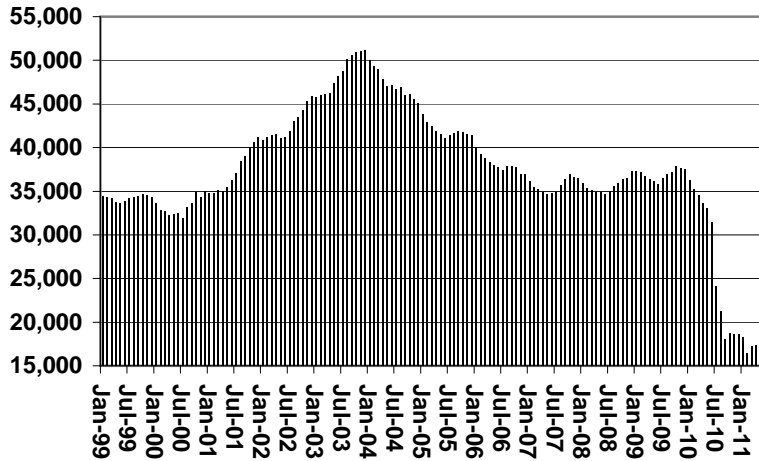
CHART 1

CASH ASSISTANCE PROGRAM

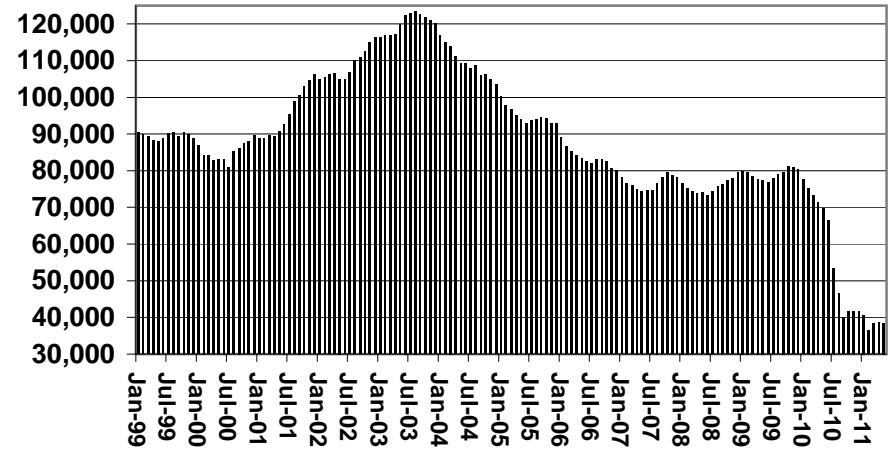
COMPARISON OF CASES, RECIPIENTS, PAYMENTS & AVERAGE PAYMENTS

FOR 1999, 2000, 2001, 2002, 2003, 2004, 2005, 2006, 2007, 2008, 2009, 2010, & 2011

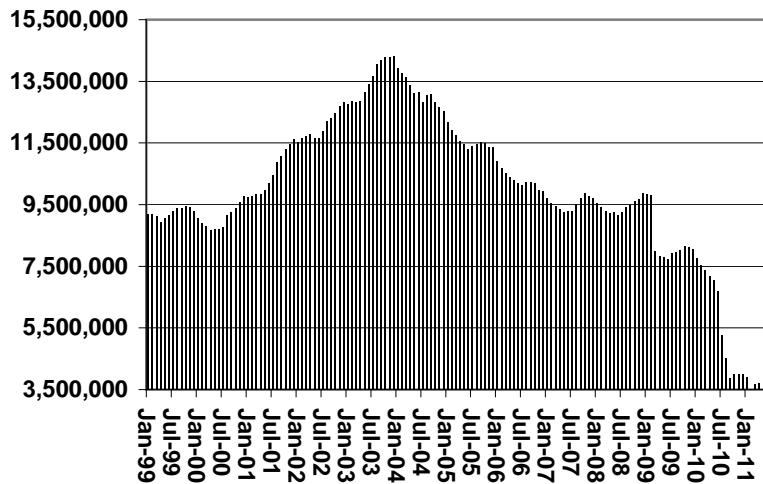
Cases



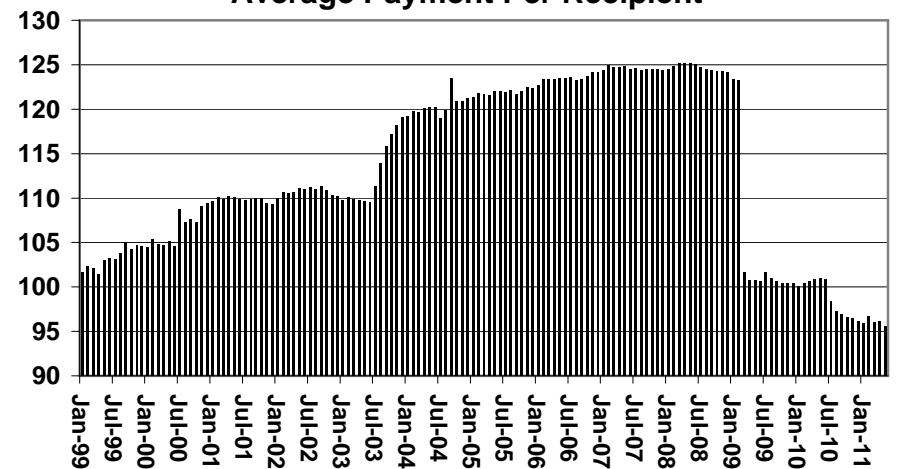
Recipients



Payments



Average Payment Per Recipient



**TABLE 1A
CA-UP**

CASH ASSISTANCE UNEMPLOYED PARENT PROGRAM: ARIZONA 1

	MAY 2011							CHANGE FROM					
								APRIL 2011			MAY 2010		
	FAMILIES (CASES)	PERSONS (RECIP.)	ADULTS	CHILDREN	TOTAL PAYMENTS	AVERAGE PAYMENT/ CASE	AVERAGE PAYMENT/ RECIP.	FAMILIES (CASES)	PERSONS (RECIP.)	TOTAL PAYMENTS	FAMILIES (CASES)	PERSONS (RECIP.)	TOTAL PAYMENTS
ARIZONA	531	1,962	813	1,149	150,154	282.78	76.53	(21)	(57)	(3,443)	(267)	(884)	(70,884)
REGION													
MARICOPA	324	1,207	459	748	93,026	287.12	77.07	(31)	(96)	(7,499)	(244)	(800)	(64,096)
NORTHERN	38	147	70	77	10,974	288.79	74.65	3	15	1,356	17	70	5,397
APACHE	2	7	4	3	605	302.50	86.43	1	4	327	2	7	605
COCONINO	3	14	5	9	975	325.00	69.64	1	3	347	2	12	836
MOHAVE	24	95	46	49	7,185	299.38	75.63	2	11	918	9	39	2,895
NAVAJO	9	31	15	16	2,209	245.44	71.26	(1)	(3)	(236)	4	12	1,061
CENTRAL	41	143	58	85	10,728	261.66	75.02	3	9	533	(14)	(58)	(4,222)
GILA	0	0	0	0	0	0.00	0.00	0	0	0	(5)	(18)	(1,458)
LA PAZ	3	13	6	7	959	319.67	73.77	2	9	624	1	7	609
PINAL	21	66	26	40	4,819	229.48	73.02	1	0	(91)	(10)	(47)	(3,373)
YAVAPAI	8	27	9	18	1,982	247.75	73.41	(2)	(5)	(442)	2	9	584
YUMA	9	37	17	20	2,968	329.78	80.22	2	9	726	(5)	(16)	(1,111)
SOUTHERN	128	465	226	239	35,426	276.77	76.18	4	11	1,883	(23)	(89)	(7,436)
COCHISE	4	12	6	6	884	221.00	73.67	(2)	(8)	(546)	0	0	(124)
GRAHAM	2	7	4	3	612	0.00	0.00	0	0	0	0	0	123
GREENLEE	0	0	0	0	0	0.00	0.00	0	0	0	0	0	0
PIMA	119	438	214	224	33,319	279.99	76.07	6	26	2,514	(24)	(90)	(7,557)
SANTA CRUZ	3	8	2	6	611	203.67	0.00	0	(7)	(85)	1	1	122

1/EXCLUDES: PRIOR MONTH NET TOTALS OF: 56 CASES; 237 RECIPIENTS; \$20,211.
GRANT DIVERSION TOTALS OF: 0 CASES; \$0.
ZERO PAY TOTALS OF 13 CASES; 54 RECIPIENTS.

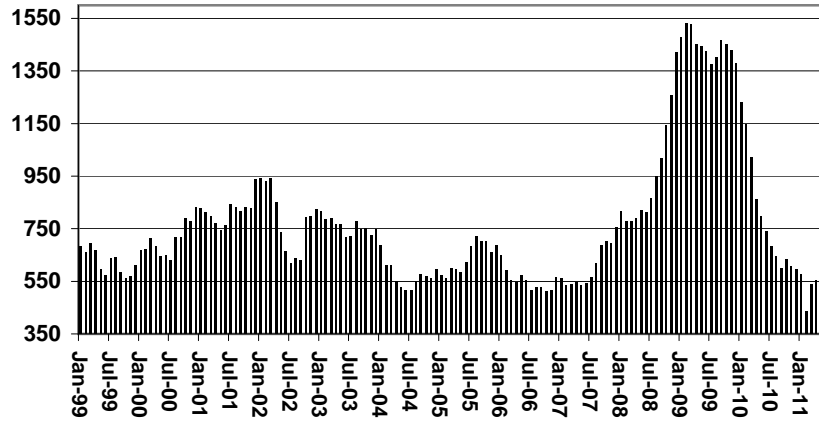
	CURRENT MO. CASES	CURRENT MO. RECIP.	CURRENT MO. DOLLARS	PRIOR MO. CASES	PRIOR MO. RECIP.	PRIOR MO. DOLLARS
PASQUAYYAQUI	10	42	\$3,505	0	0	\$0
WM APACHE	0	0	\$0	0	0	\$0
SALT RIVER	0	0	\$0	0	0	\$0
SAN CARLOS	0	0	\$0	0	0	\$0
HOPI	0	0	\$0	0	0	\$0
TOTAL	10	42	\$3,505	0	0	\$0

CASES WITH GRANT UNDER \$100 (SEE TABLE 1C).

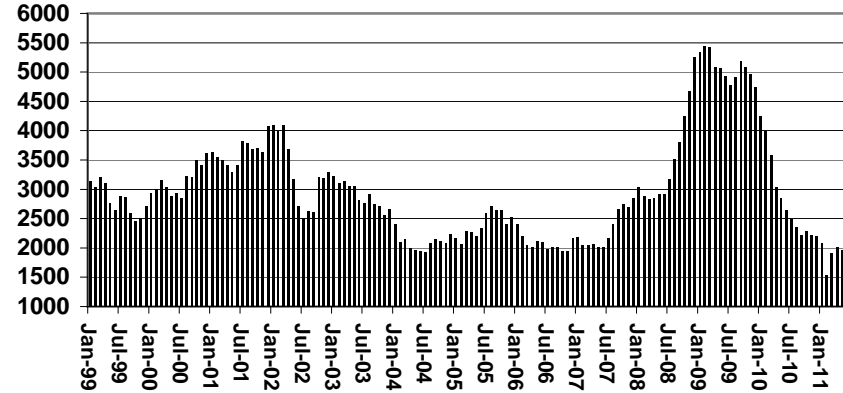
CHART 1A

CASH ASSISTANCE UNEMPLOYED PARENT PROGRAM COMPARISON OF CASES, RECIPIENTS, PAYMENTS & AVERAGE PAYMENTS FOR 1999, 2000, 2001, 2002, 2003, 2004, 2005, 2006, 2007, 2008, 2009, 2010, & 2011

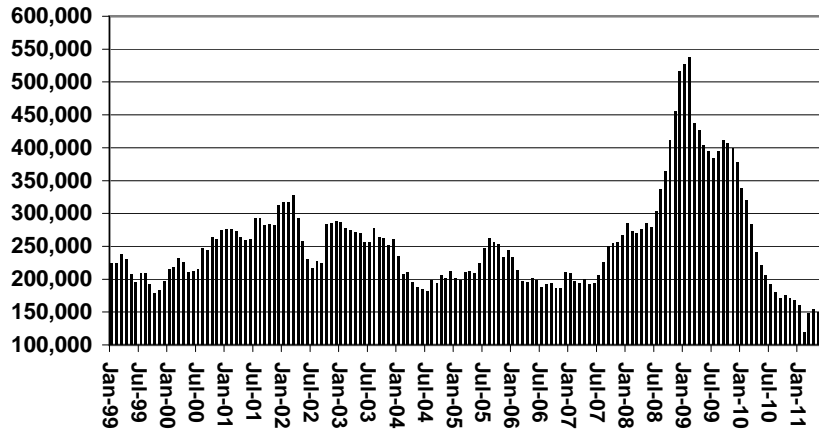
Cases



Recipients



Payments



Average Payment Per Recipient

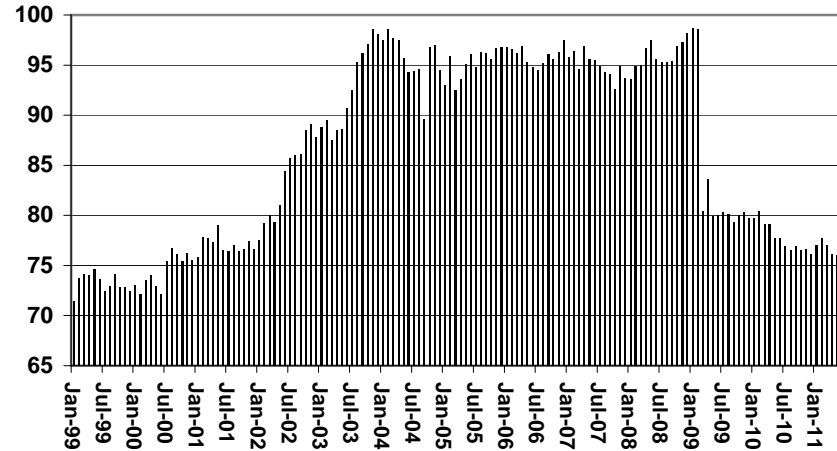


TABLE 1B 1/

**CASH ASSISTANCE: ARIZONA
CASES WITH GRANT UNDER \$100**

	MAY 2011							CHANGE FROM					
								APRIL 2011			MAY 2010		
	FAMILIES (CASES)	PERSONS (RECIP.)	ADULTS	CHILDREN	TOTAL PAYMENTS	AVERAGE PAYMENT/ CASE	AVERAGE PAYMENT/ RECIP.	FAMILIES (CASES)	PERSONS (RECIP.)	TOTAL PAYMENTS	FAMILIES (CASES)	PERSONS (RECIP.)	TOTAL PAYMENTS
ARIZONA	596	1,251	332	919	41,730	70.02	33.36	19	69	861	(272)	(505)	(17,251)
REGION													
MARICOPA	360	778	188	590	25,904	71.96	33.30	(1)	12	234	(200)	(392)	(12,452)
NORTHERN	31	61	21	40	2,107	67.97	34.54	8	22	306	(16)	(36)	(954)
APACHE	1	2	1	1	35	35.00	17.50	(2)	(5)	(234)	(1)	(2)	(192)
COCONINO	2	4	2	2	31	15.50	7.75	(2)	(3)	(281)	(1)	(5)	(213)
MOHAVE	20	37	13	24	1,345	67.25	36.35	9	22	545	(9)	(23)	(384)
NAVAJO	8	18	5	13	696	87.00	38.67	3	8	276	(5)	(6)	(165)
CENTRAL	52	106	34	72	3,605	69.33	34.01	(1)	1	(602)	(37)	(42)	(2,166)
GILA	2	5	2	3	107	53.50	21.40	(1)	(2)	(101)	(7)	(7)	(405)
LA PAZ	6	11	4	7	412	68.67	37.45	0	1	22	0	3	(40)
PINAL	21	42	14	28	1,658	78.95	39.48	(1)	(3)	(244)	(16)	(18)	(579)
YAVAPAI	11	21	7	14	703	63.91	33.48	1	3	(59)	(9)	(16)	(363)
YUMA	12	27	7	20	725	60.42	26.85	0	2	(220)	(5)	(4)	(779)
SOUTHERN	153	306	89	217	10,114	66.10	33.05	13	34	923	(19)	(35)	(1,679)
COCHISE	7	12	4	8	426	60.86	35.50	(1)	(1)	(188)	(9)	(18)	(774)
GRAHAM	3	6	2	4	334	111.33	55.67	2	5	252	(2)	(3)	(49)
GREENLEE	0	0	0	0	0	0.00	0.00	(1)	(2)	(30)	0	0	0
PIMA	140	279	82	197	9,136	65.26	32.75	12	29	886	(5)	(12)	(700)
SANTA CRUZ	3	9	1	8	218	72.67	24.22	1	3	3	(3)	(2)	(156)

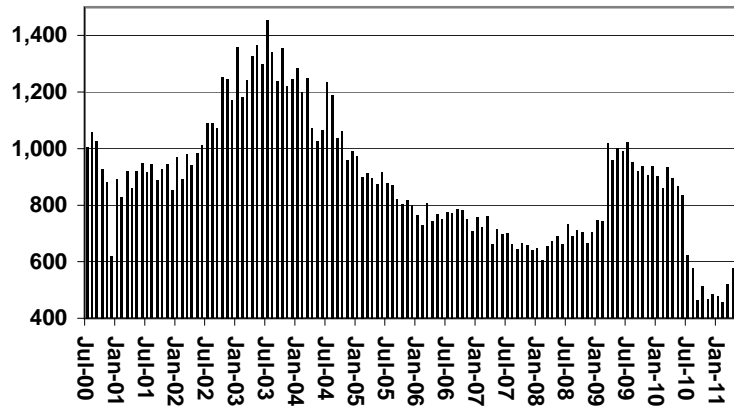
EXCLUDES: PRIOR MONTH NET TOTALS OF 466 CASES; 1,020 RECIPIENTS; \$26,488.

CHART 1B

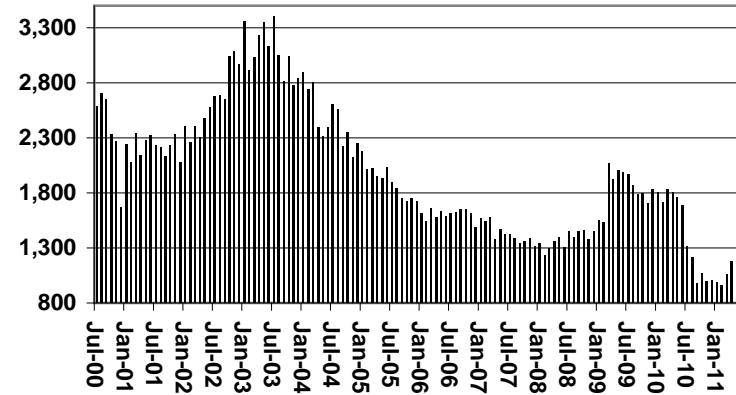
CASH ASSISTANCE PROGRAM CASES WITH GRANT UNDER \$100

FOR 1999, 2000, 2001, 2002, 2003, 2004, 2005, 2006, 2007, 2008, 2009, 2010, & 2011

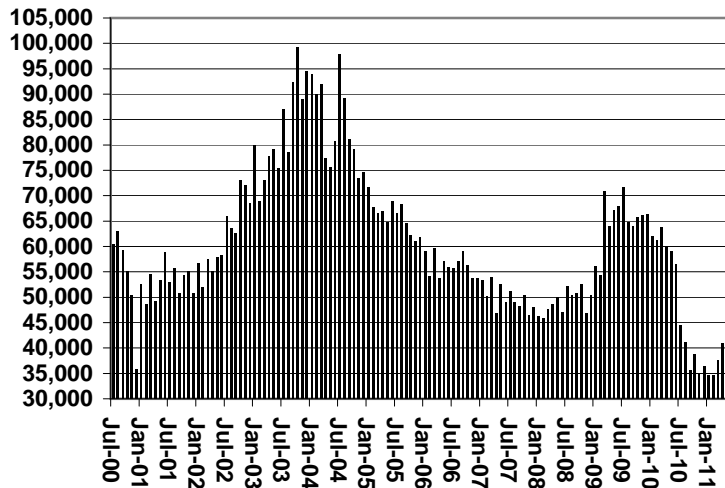
Cases



Recipients



Payments



Average Payment Per Recipient

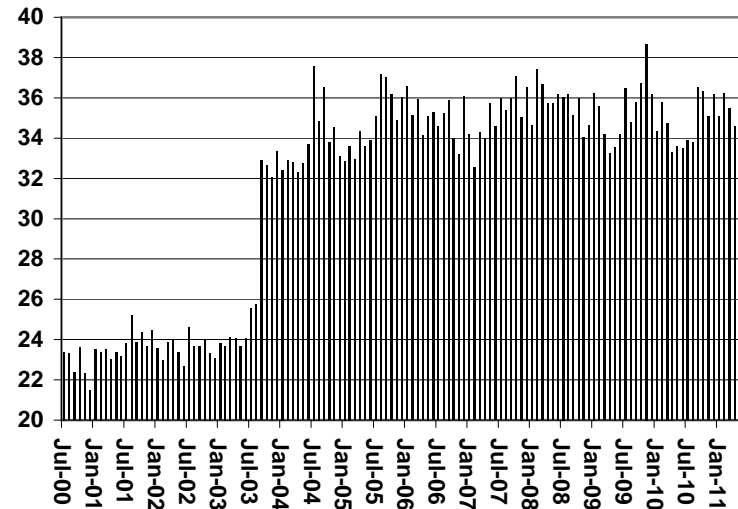


TABLE 1C 1/

CASH ASSISTANCE UNEMPLOYED PARENT PROGRAM: ARIZONA
 CASES WITH GRANT UNDER \$100

	MAY 2011							CHANGE FROM			MAY 2010		
	FAMILIES (CASES)	PERSONS (RECIP.)	ADULTS	CHILDREN	TOTAL PAYMENTS	AVERAGE	AVERAGE	FAMILIES (CASES)	PERSONS (RECIP.)	TOTAL PAYMENTS	FAMILIES (CASES)	PERSONS (RECIP.)	TOTAL PAYMENTS
						PAYMENT/ CASE	PAYMENT/ RECIP.						
ARIZONA	16	51	19	32	1,120	70.00	21.96	(7)	(12)	(273)	(11)	(50)	(346)
REGION													
MARICOPA	12	35	12	23	754	62.83	21.54	(8)	(18)	(424)	(7)	(31)	(275)
NORTHERN	0	0	0	0	0	0.00	0.00	0	0	0	(2)	(8)	(131)
APACHE	0	0	0	0	0	0.00	0.00	0	0	0	0	0	0
COCONINO	0	0	0	0	0	0.00	0.00	0	0	0	0	0	0
MOHAVE	0	0	0	0	0	0.00	0.00	0	0	0	(1)	(4)	(36)
NAVAJO	0	0	0	0	0	0.00	0.00	0	0	0	(1)	(4)	(95)
CENTRAL	1	5	2	3	96	96.00	19.20	0	3	61	(1)	(6)	(6)
GILA	0	0	0	0	0	0.00	0.00	0	0	0	0	0	0
LA PAZ	0	0	0	0	0	0.00	0.00	0	0	0	0	0	0
PINAL	1	5	2	3	96	96.00	19.20	1	5	96	(1)	(6)	(6)
YAVAPAI	0	0	0	0	0	0.00	0.00	0	0	0	0	0	0
YUMA	0	0	0	0	0	0.00	0.00	(1)	(2)	(35)	0	0	0
SOUTHERN	3	11	5	6	270	90.00	24.55	1	3	90	(1)	(5)	66
COCHISE	0	0	0	0	0	0.00	0.00	0	0	0	0	0	0
GRAHAM	0	0	0	0	0	0.00	0.00	0	0	0	0	0	0
GREENLEE	0	0	0	0	0	0.00	0.00	0	0	0	0	0	0
PIMA	3	11	5	6	270	90.00	24.55	1	3	90	(1)	(5)	66
SANTA CRUZ	0	0	0	0	0	0.00	0.00	0	0	0	0	0	0

EXCLUDES: PRIOR MONTH NET TOTALS OF 19 CASES; 67 RECIPIENTS; \$1,275.

CHART 1C

CASH ASSISTANCE UNEMPLOYED PARENT PROGRAM

CASES WITH GRANT UNDER \$100

FOR 1999, 2000, 2001, 2002, 2003, 2004, 2005, 2006, 2007, 2008, 2009, 2010, & 2011

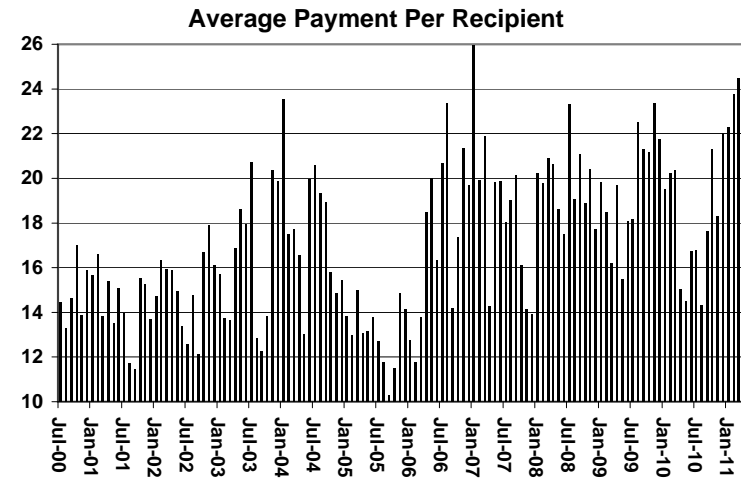
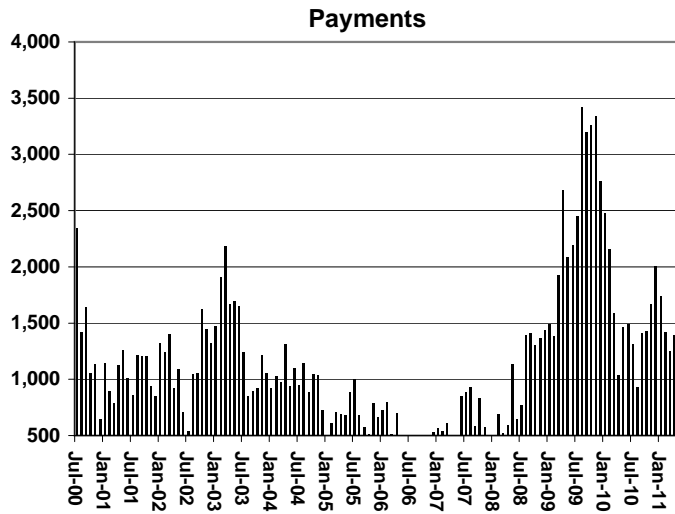
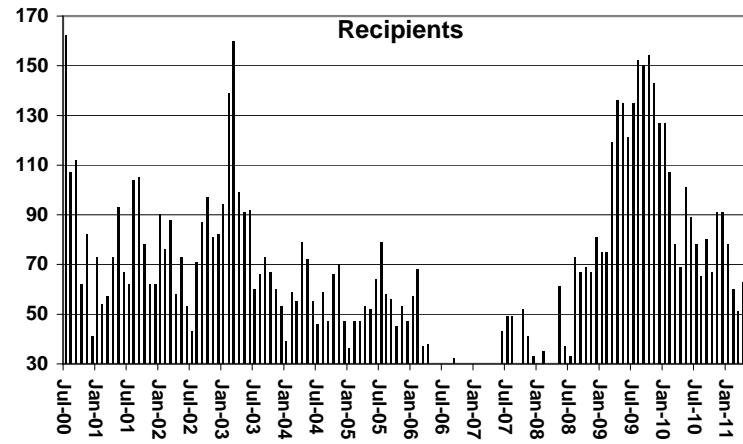
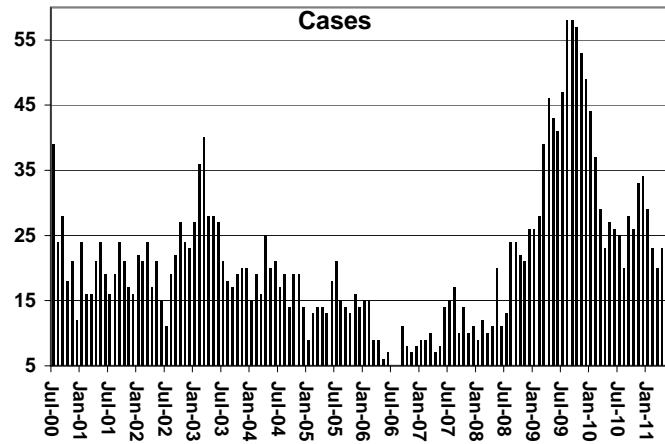


TABLE 4

TUBERCULOSIS CONTROL: ARIZONA 1/

	CHANGE FROM											
	MAY 2011					APRIL 2011			MAY 2010			
	NUMBER OF CASES	PERSONS (RECIP.)	TOTAL PAYMENTS	AVERAGE PAYMENT/ CASE	AVERAGE PAYMENT/ RECIP.	NUMBER OF CASES	PERSONS (RECIP.)	TOTAL PAYMENTS	NUMBER OF CASES	PERSONS (RECIP.)	TOTAL PAYMENTS	
ARIZONA	5	5	670	134.00	134.00	0	0	0	4	4	497	
REGION												
MARICOPA	5	5	670	134.00	134.00	0	0	0	4	4	497	
NORTHERN	0	0	0	0.00	0.00	0	0	0	0	0	0	
APACHE	0	0	0	0.00	0.00	0	0	0	0	0	0	
COCONINO	0	0	0	0.00	0.00	0	0	0	0	0	0	
MOHAVE	0	0	0	0.00	0.00	0	0	0	0	0	0	
NAVAJO	0	0	0	0.00	0.00	0	0	0	0	0	0	
CENTRAL	0	0	0	0.00	0.00	0	0	0	0	0	0	
GILA	0	0	0	0.00	0.00	0	0	0	0	0	0	
LA PAZ	0	0	0	0.00	0.00	0	0	0	0	0	0	
PINAL	0	0	0	0.00	0.00	0	0	0	0	0	0	
YAVAPAI	0	0	0	0.00	0.00	0	0	0	0	0	0	
YUMA	0	0	0	0.00	0.00	0	0	0	0	0	0	
SOUTHERN	0	0	0	0.00	0.00	0	0	0	0	0	0	
COCHISE	0	0	0	0.00	0.00	0	0	0	0	0	0	
GRAHAM	0	0	0	0.00	0.00	0	0	0	0	0	0	
GREENLEE	0	0	0	0.00	0.00	0	0	0	0	0	0	
PIMA	0	0	0	0.00	0.00	0	0	0	0	0	0	
SANTA CRUZ	0	0	0	0.00	0.00	0	0	0	0	0	0	

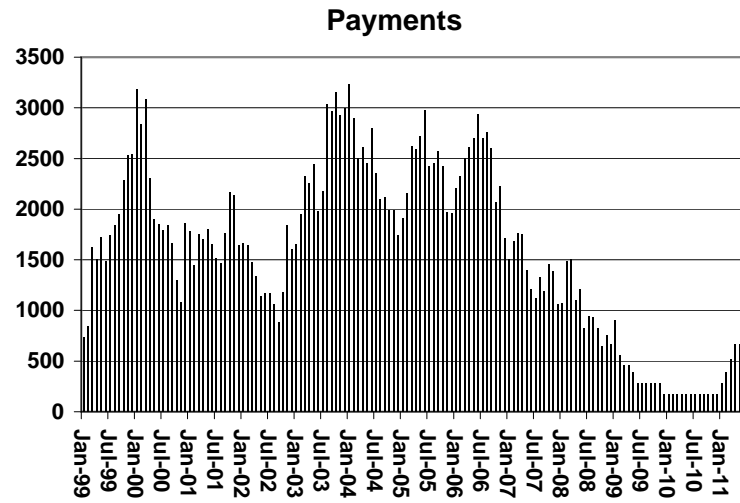
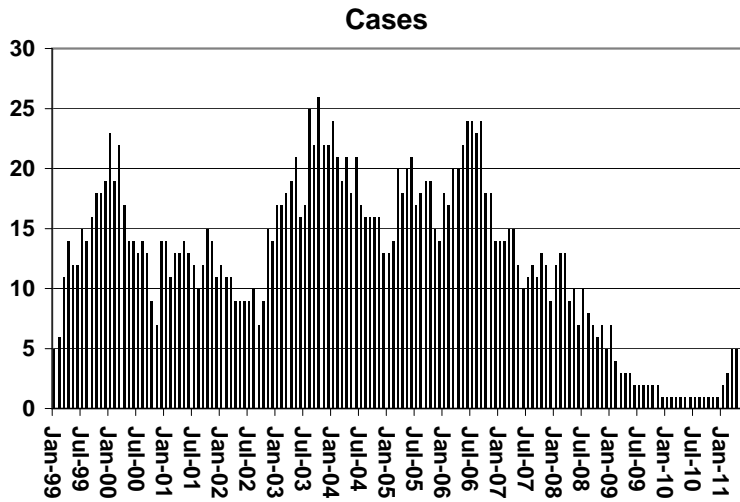
1/EXCLUDES: PRIOR MONTH NET TOTALS OF : 0 CASES; 0 RECIPIENTS; \$0.

CHART 4

TUBERCULOSIS CONTROL PROGRAM

COMPARISON OF CASES, PAYMENTS & AVERAGE PAYMENTS

FOR 1999, 2000, 2001, 2002, 2003, 2004, 2005, 2006, 2007, 2008, 2009, 2010, & 2011



Average Payment Per Case

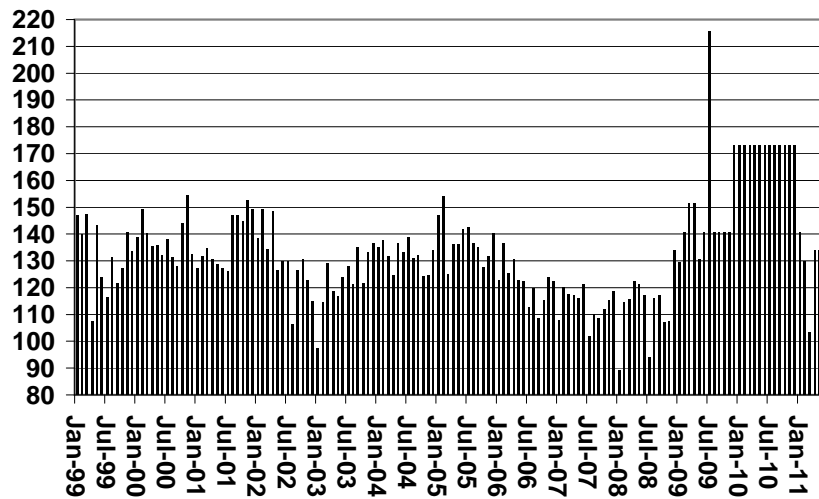


TABLE 6

SUPPLEMENTAL NUTRITION ASSISTANCE PROGRAM: ARIZONA 1

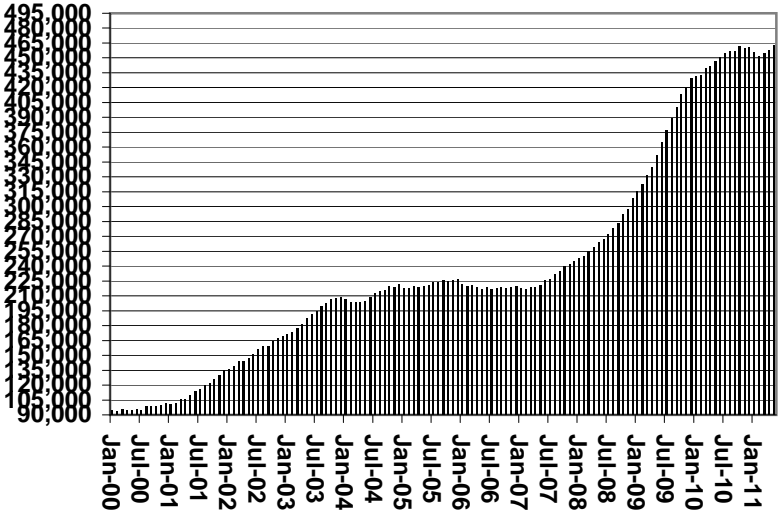
	CHANGE FROM												
	MAY 2011							APRIL 2011			MAY 2010		
	HOUSEHOLDS	PERSONS	ADULTS	CHILDREN	TOTAL PAYMENTS ISSUANCE	AVERAGE PAYMT./ HOUSEHOLD	AVERAGE PAYMT./ PERSON	HOUSEHOLDS	PERSONS	TOTAL PAYMENTS ISSUANCE	HOUSEHOLDS	PERSONS	TOTAL PAYMENTS ISSUANCE
ARIZONA	462,693	1,063,434	548,677	514,757	134,578,988	290.86	126.55	5,022	16,346	1,904,427	16,323	32,359	3,210,656
REGION													
MARICOPA	246,979	572,693	276,290	296,403	73,028,475	295.69	127.52	2,596	8,405	1,066,916	2,234	6,727	613,371
NORTHERN	53,188	128,447	72,375	56,072	16,000,358	300.83	124.57	309	1,071	91,526	2,250	2,880	285,214
APACHE	10,035	27,441	14,987	12,454	3,381,006	336.92	123.21	39	151	4,717	437	190	14,633
COCONINO	9,495	23,473	12,506	10,967	2,890,880	304.46	123.16	63	241	11,628	158	301	(27,966)
MOHAVE	20,465	43,431	26,118	17,313	5,475,834	267.57	126.08	99	387	33,514	941	1,515	181,450
NAVAJO	13,193	34,102	18,764	15,338	4,252,638	322.34	124.70	108	292	41,667	714	874	117,097
CENTRAL	60,984	143,645	78,058	65,587	17,711,597	290.43	123.30	995	3,808	453,391	3,937	8,618	771,135
GILA	6,110	13,316	7,776	5,540	1,736,008	284.13	130.37	(7)	94	6,455	404	846	95,825
LA PAZ	1,989	4,043	2,357	1,686	520,099	261.49	128.64	(29)	(51)	(8,311)	74	76	10,414
PINAL	22,366	55,209	28,628	26,581	6,927,479	309.73	125.48	370	1,333	113,984	1,806	4,546	434,901
YAVAPAI	14,927	30,117	18,151	11,966	3,723,777	249.47	123.64	32	106	(7,142)	967	1,508	148,252
YUMA	15,592	40,960	21,146	19,814	4,804,234	308.12	117.29	629	2,326	348,405	686	1,642	81,743
SOUTHERN	101,542	218,649	121,954	96,695	27,838,558	274.16	127.32	1,122	3,062	292,594	7,902	14,134	1,540,936
COCHISE	10,757	23,191	13,301	9,890	2,851,515	265.08	122.96	65	303	15,182	917	1,732	171,774
GRAHAM	3,544	8,098	4,524	3,574	1,023,691	288.85	126.41	69	137	4,115	311	419	51,916
GREENLEE	508	1,112	634	478	141,021	277.60	126.82	1	14	786	6	(5)	5,471
PIMA	82,288	174,364	97,458	76,906	22,425,950	272.53	128.62	951	2,515	271,147	6,318	11,175	1,232,200
SANTA CRUZ	4,445	11,884	6,037	5,847	1,396,381	314.15	117.50	36	93	1,364	350	813	79,575

1/EXCLUDES: PRIOR MONTH NET TOTALS OF : 10,809 CASES; 27,508 RECIPIENTS; \$2,039,480.
 AGED CANCELATIONS: 11,640 CASES; 14,420 RECIPIENTS; \$668,728.
 SNAP CONVERSIONS: 0 CASES; 0 RECIPIENTS; \$0.
 SNAP CHILD ONLY: 58,924 CASES; 139,441 RECIPIENTS; \$21,042,118.
 SNAP ZERO PAY: 8,813 CASES; 34,811 RECIPIENTS.

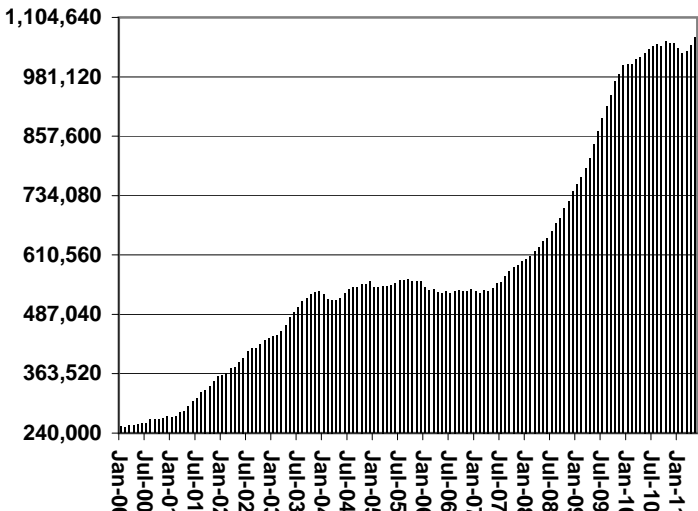
CHART 6

SUPPLEMENTAL NUTRITION ASSISTANCE PROGRAM (SNAP) COMPARISON OF HOUSEHOLDS, RECIPIENTS, PAYMENTS & AVERAGE PAYMENTS FOR 1999, 2000, 2001, 2002, 2003, 2004, 2005, 2006, 2007, 2008, 2009, 2010, & 2011

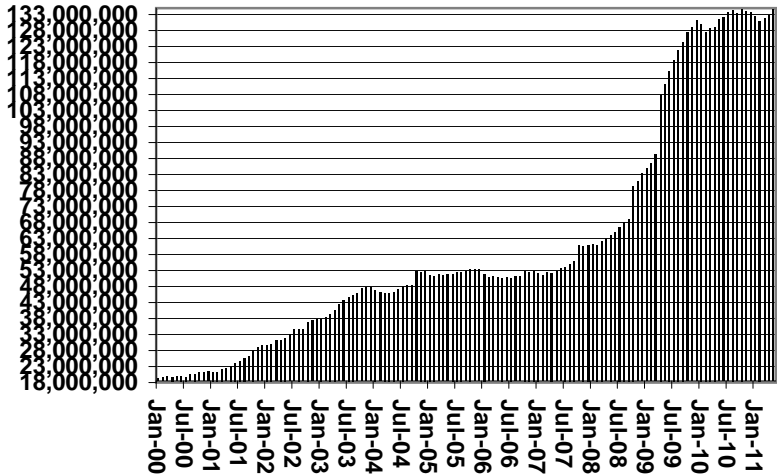
Households



Recipients



Payments



Average Payment Per Household

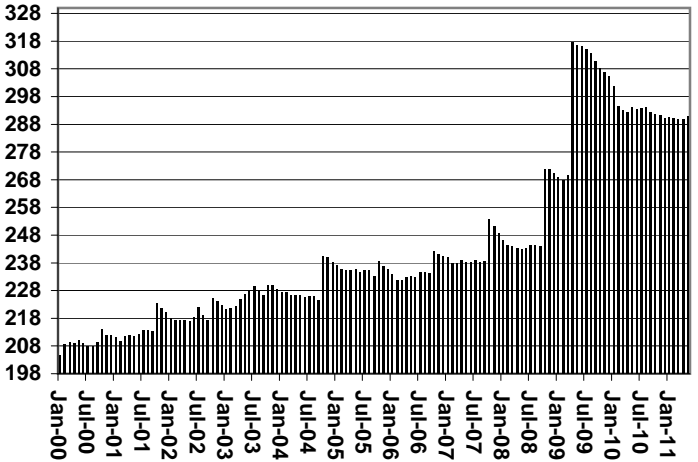


TABLE 7A
MEDICAL ASSISTANCE PROGRAM
RECIPIENTS

MAY 2011

	SOBRA WOMAN 133% FPL	SOBRA CHILD	ADULT W/O CHILD 100% FPL	FOSTER CARE	1931 36% FPL	FEDERAL EMERGENCY SERVICES	INFANTS	ADULT W/O CHILD 40% FPL	MEDICAL W/SPEND DOWN	SOBRA WOMAN 100% FPL	SOBRA CHILD 100% FPL	TRANSITIONAL MEDICAL T1 - T4	1931 100% FPL	YATI	OTHER	TOTAL CASES
ARIZONA	10,857	68,344	64,158	12,827	340,644	50,538	45,251	174,106	6,609	4,147	235,617	43,841	126,360	334	29,330	1,212,963
REGION																
MARICOPA	5,907	39,370	31,675	6,924	189,483	39,391	26,849	88,748	3,544	2,225	138,789	21,758	65,698	183	15,206	675,750
NORTHERN	1,257	7,308	7,714	664	44,018	1,028	4,619	25,918	981	565	23,463	4,845	14,979	16	3,072	140,447
APACHE	203	1,406	1,112	35	11,333	74	873	5,915	188	120	4,235	876	2,672	0	419	29,461
COCONINO	298	1,426	1,588	137	8,509	403	1,066	4,657	148	114	4,837	1,031	3,052	12	449	27,727
MOHAVE	411	2,207	3,157	348	11,657	353	1,405	8,201	456	201	8,598	1,697	5,446	3	1,634	45,774
NAVAJO	345	2,269	1,857	144	12,519	198	1,275	7,145	189	130	5,793	1,241	3,809	1	570	37,485
CENTRAL	1,667	9,065	9,700	1,518	43,698	3,754	5,943	22,202	906	555	29,843	7,627	18,902	37	4,444	159,861
GILA	103	638	776	101	4,697	117	501	2,616	84	41	1,942	454	1,349	2	364	13,785
LA PAZ	32	262	270	18	1,224	133	141	825	14	9	690	165	399	0	164	4,346
PINAL	593	4,112	3,001	594	18,706	1,211	2,268	8,796	249	193	11,066	2,302	6,455	17	1,342	60,905
YAVAPAI	413	1,630	2,754	505	7,530	1,114	1,143	5,158	293	119	6,282	1,659	4,134	16	1,247	33,997
YUMA	526	2,423	2,899	300	11,541	1,179	1,890	4,807	266	193	9,863	3,047	6,565	2	1,327	46,828
SOUTHERN	2,026	12,601	15,069	3,721	63,445	6,365	7,840	37,238	1,178	802	43,522	9,611	26,781	98	6,608	236,905
COCHISE	216	1,256	1,894	243	6,903	418	785	3,359	158	96	4,476	916	2,858	4	897	24,479
GRAHAM	117	439	483	69	2,822	19	350	1,484	62	25	1,446	347	910	1	174	8,748
GREENLEE	9	55	62	8	431	3	56	239	11	6	247	47	103	1	34	1,312
PIMA	1,584	10,262	11,753	3,368	49,940	5,509	6,207	30,968	911	634	34,213	7,616	20,899	91	5,021	188,976
SANTA CRUZ	100	589	877	33	3,349	416	442	1,188	36	41	3,140	685	2,011	1	482	13,390

TABLE 7B

MEDICAL ASSISTANCE PROGRAM

RECIPIENTS

CHANGE FROM

APRIL 2011

	SOBRA WOMAN 133% FPL	SOBRA CHILD	ADULT W/O CHILD 100% FPL	FOSTER CARE	1931 36% FPL	FEDERAL EMERGENCY SERVICES	INFANTS	ADULT W/O CHILD 40% FPL	MEDICAL W/SPEND DOWN	SOBRA WOMAN 100% FPL	SOBRA CHILD 100% FPL	TRANSITIONAL MEDICAL T1 - T4	1931 100% FPL	YATI	OTHER	TOTAL CASES
ARIZONA	(54)	(803)	(214)	120	3,446	559	(246)	185	(783)	143	1,885	(1,244)	635	11	187	3,827
REGION																
MARICOPA	38	(486)	(145)	75	1,602	495	(170)	198	(460)	116	1,115	(85)	144	7	125	2,569
NORTHERN	(8)	(93)	(90)	9	126	(47)	0	81	(47)	(9)	(5)	(37)	(4)	0	11	(113)
APACHE	2	(36)	(24)	0	(75)	(8)	(20)	8	(3)	9	73	19	(5)	0	(5)	(65)
COCONINO	(17)	(41)	(67)	8	53	(12)	(5)	(29)	(7)	(4)	(3)	(33)	(5)	0	33	(129)
MOHAVE	16	(5)	8	3	49	(20)	2	60	(17)	(2)	45	(57)	77	0	(6)	153
NAVAJO	(9)	(11)	(7)	(2)	99	(7)	23	42	(20)	(12)	(120)	34	(71)	0	(11)	(72)
CENTRAL	(47)	(111)	28	8	1,121	77	(34)	27	(140)	(16)	482	(775)	360	0	2	982
GILA	(12)	(41)	(10)	1	78	(10)	1	(37)	(24)	7	(30)	6	(6)	0	(18)	(95)
LA PAZ	2	(1)	5	(1)	(35)	(9)	(4)	(14)	(3)	(1)	(12)	29	(17)	0	3	(58)
PINAL	(12)	(24)	17	0	237	19	(14)	61	(57)	(3)	73	105	(22)	1	(14)	367
YAVAPAI	(4)	(16)	(31)	9	62	(41)	(4)	(55)	(34)	(1)	(46)	2	(24)	(1)	15	(169)
YUMA	(21)	(29)	47	(1)	779	118	(13)	72	(22)	(18)	497	(917)	429	0	16	937
SOUTHERN	(37)	(113)	(7)	28	597	34	(42)	(121)	(136)	52	293	(347)	135	4	49	389
COCHISE	(15)	3	(20)	(2)	88	(2)	(10)	(4)	(18)	(1)	12	(10)	(7)	1	(5)	10
GRAHAM	(2)	0	17	2	84	1	11	(3)	(11)	0	27	(38)	16	(1)	0	103
GREENLEE	1	(1)	(1)	0	(6)	1	6	0	0	0	(2)	8	(3)	(1)	(1)	1
PIMA	(17)	(78)	35	28	469	41	(49)	(112)	(93)	57	213	(296)	93	5	47	343
SANTA CRUZ	(4)	(37)	(38)	0	(38)	(7)	0	(2)	(14)	(4)	43	(11)	36	0	8	(68)

TABLE 7C
MEDICAL ASSISTANCE PROGRAM
RECIPIENTS

CHANGE FROM

MAY 2010

	SOBRA WOMAN 133% FPL	SOBRA CHILD	ADULT W/O CHILD 100% FPL	FOSTER CARE	1931 36% FPL	FEDERAL EMERGENCY SERVICES	INFANTS	ADULT W/O CHILD 40% FPL	MEDICAL W/SPEND DOWN	SOBRA WOMAN 100% FPL	SOBRA CHILD 100% FPL	TRANSITIONAL MEDICAL T1 - T4	3E 1931 100% FPL	YATI	OTHER	TOTAL CASES
ARIZONA	602	3,866	4,726	864	5,363	(13,321)	(3,996)	12,256	(444)	314	7,982	(1,622)	6,260	(10)	2,284	25,124
REGION																
MARICOPA	340	2,836	2,715	727	2,646	(10,933)	(2,843)	6,328	(293)	258	4,826	(1,939)	3,519	(26)	1,317	9,478
NORTHERN	72	139	375	22	251	(441)	(404)	1,603	(62)	45	(70)	(333)	51	(1)	186	1,433
APACHE	13	(25)	105	(9)	205	(41)	(96)	491	22	42	(235)	7	(227)	(1)	33	284
COCONINO	(4)	55	16	10	(29)	12	(46)	(22)	(2)	(1)	(36)	(61)	141	5	48	86
MOHAVE	30	69	132	24	143	(279)	(147)	587	(74)	10	140	(166)	205	(1)	106	779
NAVAJO	33	40	122	(3)	(68)	(133)	(115)	547	(8)	(6)	61	(113)	(68)	(4)	(1)	284
CENTRAL	32	124	583	54	941	(859)	(128)	1,146	(188)	(32)	1,449	(39)	1,404	7	206	4,700
GILA	(23)	(27)	16	2	295	(21)	(50)	3	(26)	(16)	(27)	25	37	0	26	214
LA PAZ	(4)	33	(6)	1	(5)	(6)	(2)	44	(11)	(4)	(48)	(28)	(36)	0	15	(57)
PINAL	73	192	312	(6)	940	(169)	65	821	(102)	11	1,161	191	803	8	39	4,339
YAVAPAI	28	(134)	134	67	(36)	(284)	(116)	118	(33)	(7)	68	112	162	2	46	127
YUMA	(42)	60	127	(10)	(253)	(379)	(25)	160	(16)	(16)	295	(339)	438	(3)	80	77
SOUTHERN	158	767	1,053	61	1,525	(1,088)	(621)	3,179	99	43	1,777	689	1,286	10	575	9,513
COCHISE	32	121	243	(2)	(20)	(74)	(97)	244	16	21	300	(62)	127	1	58	908
GRAHAM	23	(10)	21	(4)	213	(33)	(18)	120	16	(8)	(8)	(15)	(36)	0	27	288
GREENLEE	(2)	5	(8)	0	28	(3)	1	62	0	2	(21)	(21)	(59)	(1)	(4)	(21)
PIMA	105	607	751	63	1,364	(871)	(490)	2,611	75	37	1,347	724	1,100	10	451	7,884
SANTA CRUZ	0	44	46	4	(60)	(107)	(17)	142	(8)	(9)	159	63	154	0	43	454

CHART 7

MEDICAL ASSISTANCE PROGRAM

COMPARISON OF RECIPIENTS

FOR 1999, 2000, 2001, 2002, 2003, 2004, 2005, 2006, 2007, 2008, 2009, 2010, & 2011

Total Recipients

