



---

DEPARTMENT OF ECONOMIC SECURITY

---

*Your Partner For A Stronger Arizona*

State of Arizona

Department of Economic Security

Family Assistance Administration

Statistical Bulletin

June, 2011

Phone: (602) 542-3678

<https://www.azdes.gov/appreports.aspx>

\*\*\*\* STATISTICAL BULLETIN \*\*\*\*  
ARIZONA DEPARTMENT OF ECONOMIC SECURITY  
FAMILY ASSISTANCE ADMINISTRATION  
BOX 6123, PHOENIX, ARIZONA 85005  
PHONE (602) 542-3678

JUNE 2011

THIS ISSUE OF THE STATISTICAL BULLETIN COMPARES JUNE 2011 DATA FOR EACH OF THE INDICATED PROGRAMS WITH THE INFORMATION FOR MAY 2011 AND JUNE 2010. STATEWIDE SUMMARIES OF ACTIVITY WITHIN EACH OF THE SPECIFIC PROGRAMS FOR THIS REPORT PERIOD ARE DISCUSSED BELOW. THE TABLES COMPARE CURRENT AND PRIOR MONTH DATA. DISTRICT AND COUNTY COMPARISONS ARE PROVIDED WITHIN THIS BULLETIN

TANF SUMMARY

COMPARING TO MAY 2011, JUNE 2011 CASES DECREASED BY 225 (1.22%) TO 18,148. RECIPIENTS DECREASED BY 551 (1.32%) TO 41,136. PAYMENTS DECREASED BY \$48,643 (1.26%) TO \$3,818,186. AVERAGE PAYMENT PER CASE DECREASED BY \$0.07 (0.03%) TO \$0.00. PAYMENT PER RECIPIENT INCREASED BY \$0.06 (0.06%) TO \$92.82.

COMPARING TO JUNE 2010, JUNE 2011 CASES DECREASED BY 14,865 (45.03%). RECIPIENTS DECREASED BY 29,792 (42.00%). TOTAL PAYMENTS DECREASED BY \$3,151,165 (45.21%). THE AVERAGE PAYMENT PER CASE DECREASED BY \$0.72 (0.34%). THE AVERAGE PAYMENT PER RECIPIENT DECREASED BY \$5.44 (5.54%).

CASH ASSISTANCE (CA)

COMPARING TO MAY 2011, JUNE 2011 CASES DECREASED BY 209 (1.21%) TO 17,021. RECIPIENTS DECREASED BY 466 (1.21%) TO 37,957. PAYMENTS DECREASED BY \$41,005 (1.12%) TO \$3,632,820. AVERAGE PAYMENT PER CASE INCREASED BY \$0.21 (0.10%) TO \$213.43. PAYMENT PER RECIPIENT INCREASED BY \$0.09 (0.09%) TO \$95.71.

COMPARING TO JUNE 2010, JUNE 2011 CASES DECREASED BY 14,388 (45.81%). RECIPIENTS DECREASED BY 28,555 (42.93%). TOTAL PAYMENTS DECREASED BY \$3,073,148 (45.83%). THE AVERAGE PAYMENT PER CASE DECREASED BY \$0.07 (0.03%). THE AVERAGE PAYMENT PER RECIPIENT DECREASED BY \$5.11 (5.07%).

CASH ASSISTANCE UNEMPLOYED PARENT PROGRAM (CA-UP)

COMPARING TO MAY 2011, JUNE 2011 CASES DECREASED BY 49 (9.23%) TO 482. RECIPIENTS DECREASED BY 135 (6.88%) TO 1,827. PAYMENTS DECREASED BY \$11,249 (7.49%) TO \$138,905. AVERAGE PAYMENT PER CASE INCREASED BY \$5.40 (1.91%) TO \$288.18. PAYMENT PER RECIPIENT DECREASED BY \$0.50 (0.65%) TO \$76.03.

COMPARING TO JUNE 2010, JUNE 2011 CASES DECREASED BY 259 (34.95%). RECIPIENTS DECREASED BY 815 (30.85%). TOTAL PAYMENTS DECREASED BY \$66,578 (32.40%). THE AVERAGE PAYMENT PER CASE INCREASED BY \$10.88 (3.92%). THE AVERAGE PAYMENT PER RECIPIENT DECREASED BY \$1.75 (2.24%).

CASH ASSISTANCE WITH GRANT UNDER \$100 (CA-MOE)

COMPARING TO MAY 2011, JUNE 2011 CASES INCREASED BY 42 (7.05%) TO 638. RECIPIENTS INCREASED BY 78 (6.24%) TO 1,329. PAYMENTS INCREASED BY \$4,225 (10.12%) TO \$45,955. AVERAGE PAYMENT PER CASE INCREASED BY \$2.01 (2.87%) TO \$72.03. AVERAGE PAYMENT PER RECIPIENT INCREASED BY \$1.22 (3.66%) TO \$34.58.

COMPARING TO JUNE 2010, JUNE 2011 CASES DECREASED BY 199 (23.78%). RECIPIENTS DECREASED BY 356 (21.13%). TOTAL PAYMENTS DECREASED BY \$10,456 (18.54%). THE AVERAGE PAYMENT PER CASE INCREASED BY \$4.63 (6.87%). THE AVERAGE PAYMENT PER RECIPIENT INCREASED BY \$1.10 (3.29%).

CASH ASSISTANCE UNEMPLOYED PARENT PROGRAM WITH GRANT UNDER \$100 (CA-UP-MOE) NEW PROGRAM STARTING 7/01

COMPARING TO MAY 2011, JUNE 2011 CASES DECREASED BY 9 (56.25%) TO 7. RECIPIENTS DECREASED BY 28 (54.90%) TO 23. PAYMENTS DECREASED BY \$614 (54.82%) TO \$506. AVERAGE PAYMENT PER CASE INCREASED BY \$2.29 (3.27%) TO \$72.29. PAYMENT PER RECIPIENT INCREASED BY \$0.04 (0.18%) TO \$22.00.

COMPARING TO JUNE 2010, JUNE 2011 CASES DECREASED BY 19 (73.08%). RECIPIENTS DECREASED BY 66 (5.89%). TOTAL PAYMENTS DECREASED BY \$983 (66.02%). THE AVERAGE PAYMENT PER CASE INCREASED BY \$15.02 (26.23%). THE AVERAGE PAYMENT PER RECIPIENT INCREASED BY \$5.27 (31.50%).

TUBERCULOSIS CONTROL PROGRAM (TC)

COMPARING TO MAY 2011, JUNE 2011 CASES INCREASED BY 1 (20.00%) TO 6. RECIPIENTS INCREASED BY 1 (20.00%) TO 6. PAYMENTS INCREASED BY \$108 (16.12%) TO \$778. AVERAGE PAYMENT PER CASE INCREASED BY \$76.39 (57.01%) TO \$210.39. AVERAGE PAYMENT PER RECIPIENT DECREASED BY \$4.33 (3.23%) TO \$129.67.

COMPARING TO JUNE 2010, JUNE 2011 CASES INCREASED BY 5 (500.00%). RECIPIENTS INCREASED BY 5 (500.00%). TOTAL PAYMENTS INCREASED BY \$605 (349.71%). THE AVERAGE PAYMENT PER CASE INCREASED BY \$37.39 (21.61%). THE AVERAGE PAYMENT PER RECIPIENT DECREASED BY \$43.33 (25.05%).

SUPPLEMENTAL NUTRITION ASSISTANCE PROGRAM (SNAP)

COMPARING TO MAY 2011, JUNE 2011 SUPPLEMENTAL NUTRITION ASSISTANCE HOUSEHOLDS INCREASED BY 7,367 (1.59%) TO 470,060. PERSONS RECEIVING SUPPLEMENTAL NUTRITION ASSISTANCE INCREASED BY 20,017 (1.88%) TO 1,083,451. TOTAL COUPON ISSUANCE INCREASED BY \$2,214,323 (1.65%) TO \$136,793,311. THE AVERAGE HOUSEHOLD ALLOTMENT INCREASED BY \$0.15 (0.05%) TO \$291.01. THE AVERAGE ALLOTMENT PER PERSON DECREASED BY \$0.29 (0.23%) TO \$126.26.

COMPARING TO JUNE 2010, JUNE 2011 SUPPLEMENTAL NUTRITION ASSISTANCE HOUSEHOLDS INCREASED BY 19,750 (4.39%). PERSONS RECEIVING SUPPLEMENTAL NUTRITION ASSISTANCE INCREASED BY 46,084 (4.44%). TOTAL COUPON ISSUANCE INCREASED BY \$4,701,159 (3.56%). THE AVERAGE ALLOTMENT PER HOUSEHOLD DECREASED BY \$2.33 (0.79%). THE AVERAGE ALLOTMENT PER PERSON DECREASED BY \$1.07 (0.84%).

MEDICAL ASSISTANCE PROGRAM (MA) NEW TABLE INCLUDES PROP. 204 CATEGORIES

COMPARING TO JANUARY 2010, FEBRUARY 2010 TOTAL RECIPIENTS TOTAL RECIPIENTS DECREASED BY 6,946 (0.59%). SOBRA WOMEN AT 140% FPL DECREASED BY 248 (2.41%). SOBRA CHILDREN DECREASED BY 812 (1.23%). ADULTS W/O CHILD AT 100% INCREASED BY 446 (0.76%). FOSTER CARE INCREASED BY 69 (0.59%). 1931 AT 36% FPL DECREASED BY 4,919 (1.48%). EMERGENCY SERVICES DECREASED BY 5,083 (6.43%). INFANTS DECREASED BY 513 (1.02%). ADULT W/O CHILD AT 140% INCREASED BY 510 (0.33%). MEDICAL W/SPEND DOWN DECREASED BY 201 (3.10%). SOBRA WOMAN AT 100% INCREASED BY 99 (2.63%). SOBRA CHILD AT 100% INCREASED BY 902 (0.40%). TRANSITIONAL MEDICAL INCREASED BY 1,305 (3.04%). 1931 AT 100% INCREASED BY 1,355 (1.16%). YATI INCREASED BY 10 (3.02%). ALL OTHER CATEGORIES INCREASED BY 134 (0.51%).

COMPARING TO JUNE 2010, JUNE 2011 TOTAL RECIPIENTS TOTAL RECIPIENTS INCREASED BY 31,163 (2.62%). SOBRA WOMEN AT 140% FPL INCREASED BY 548 (5.27%). SOBRA CHILDREN INCREASED BY 3,896 (5.78%). ADULTS W/O CHILD AT 100% INCREASED BY 4,049 (6.64%). FOSTER CARE INCREASED BY 963 (8.01%). 1931 AT 36% FPL INCREASED BY 9,557 (2.86%). EMERGENCY SERVICES DECREASED BY 9,661 (15.79%). INFANTS DECREASED BY 3,597 (7.36%). ADULT W/O CHILD AT 140% INCREASED BY 12,829 (7.86%). MEDICAL W/SPEND DOWN DECREASED BY 2,078 (28.72%). SOBRA WOMAN AT 100% INCREASED BY 240 (6.19%). SOBRA CHILD AT 100% INCREASED BY 8,389 (3.68%). TRANSITIONAL MEDICAL DECREASED BY 2,097 (4.69%). 1931 AT 100% INCREASED BY 5,848 (4.85%). YATI DECREASED BY 18 (5.14%). ALL OTHER CATEGORIES INCREASED BY 2,295 (8.41%).

## TANF SUMMARY

### TABLES 1, 1A, 1B, & 1C: ARIZONA 1/

	JUNE 2011							MAY 2011			CHANGE FROM JUNE 2010		
	FAMILIES (CASES)	PERSONS (RECIP.)	ADULTS	CHILDREN	TOTAL PAYMENTS	AVERAGE	AVERAGE	FAMILIES (CASES)	PERSONS (RECIP.)	TOTAL PAYMENTS	FAMILIES (CASES)	PERSONS (RECIP.)	TOTAL PAYMENTS
						PAYMENT/ CASE	PAYMENT/ RECIP.						
ARIZONA	18,148	41,136	10,948	30,188	3,818,186	210.39	92.82	(225)	(551)	(48,643)	(14,865)	(29,792)	(3,151,165)
REGION													
MARICOPA	11,163	25,917	6,782	19,135	2,357,806	211.22	90.98	(117)	(312)	(21,754)	(9,366)	(18,952)	(1,950,548)
NORTHERN	1,047	2,362	658	1,704	213,814	204.22	90.52	4	10	(1,632)	(1,569)	(3,685)	(408,174)
APACHE	41	92	34	58	8,453	206.17	91.88	(4)	1	(25)	(52)	(110)	(13,406)
COCONINO	62	155	33	122	14,087	227.21	90.88	(4)	(16)	(1,026)	(95)	(162)	(17,229)
MOHAVE	629	1,369	379	990	127,104	202.07	92.84	14	41	1,454	(390)	(651)	(79,471)
NAVAJO	315	746	212	534	64,170	203.71	86.02	(2)	(16)	(2,035)	(1,032)	(2,762)	(298,068)
CENTRAL	1,968	4,217	1,096	3,121	412,042	209.37	97.71	(24)	(53)	(6,781)	(1,609)	(3,202)	(333,991)
GILA	410	870	307	563	99,049	241.58	113.85	10	6	1,086	(218)	(464)	(52,771)
LA PAZ	66	138	33	105	13,066	197.97	94.68	(5)	(11)	(930)	(87)	(176)	(15,416)
PINAL	809	1,724	406	1,318	160,766	198.72	93.25	(33)	(50)	(6,682)	(646)	(1,345)	(135,054)
YAVAPAI	268	529	114	415	50,878	189.84	96.18	(7)	(9)	(1,745)	(256)	(442)	(49,015)
YUMA	415	956	236	720	88,283	212.73	92.35	11	11	1,490	(402)	(775)	(81,735)
SOUTHERN	3,970	8,640	2,412	6,228	834,524	210.21	96.59	(88)	(196)	(18,476)	(2,321)	(3,953)	(458,452)
COCHISE	335	661	154	507	68,893	205.65	104.23	(5)	(12)	(585)	(289)	(524)	(58,536)
GRAHAM	228	465	153	312	52,202	228.96	112.26	(10)	(12)	(1,819)	(13)	1	(1,716)
GREENLEE	16	39	11	28	3,554	222.13	91.13	(1)	(3)	(291)	(10)	(14)	(1,821)
PIMA	3,295	7,270	2,056	5,214	690,218	209.47	94.94	(67)	(154)	(14,754)	(1,912)	(3,247)	(377,690)
SANTA CRUZ	96	205	38	167	19,657	204.76	95.89	(5)	(15)	(1,027)	(97)	(169)	(18,689)

1/EXCLUDES: PRIOR MONTH NET TOTALS OF 894 CASES; 2,250 RECIPIENTS; \$195,786.

GRANT DIVERSION TOTALS OF: 2,567 CASES; \$1,955,572.

ZERO PAY TOTALS OF 4,378 CASES; 12,891 RECIPIENTS.

RRP: 189 CASES; 264 RECIPIENTS; \$35,853.

1/INCLUDES: TANF CHILD ONLY: 7,666 CASES; 13,088 RECIPIENTS; \$1,446,197.

	CURRENT MO. CASES	CURRENT MO. RECIP.	CURRENT MO. DOLLARS	PRIOR MO. CASES	PRIOR MO. RECIP	PRIOR MO. DOLLARS
PASQUA/YAQUI	250	715	\$77,018	20	64	\$8,139
WM APACHE	0	0	\$0	0	0	\$0
SALT RIVER	74	244	\$24,468	7	20	\$1,014
SAN CARLOS	446	952	\$110,464	34	72	\$7,869
HOPÍ	100	272	\$22,873	5	10	\$656
<b>TOTAL</b>	<b>870</b>	<b>2,183</b>	<b>\$234,823</b>	<b>66</b>	<b>166</b>	<b>\$17,678</b>

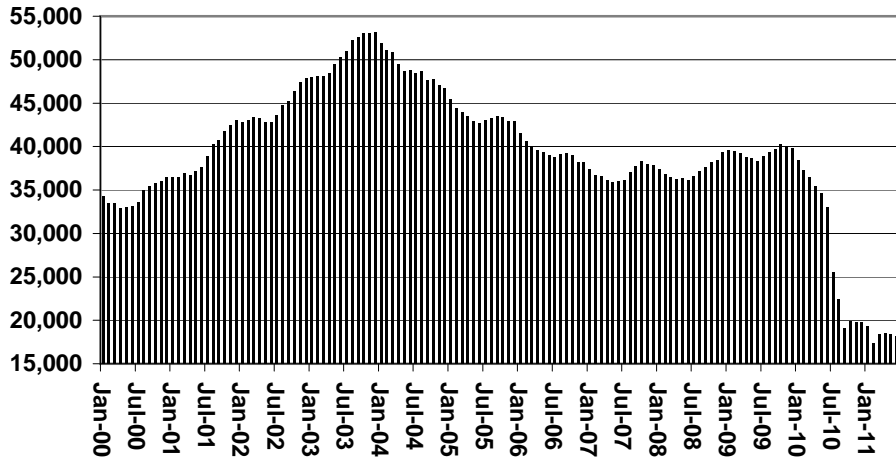
# TANF SUMMARY

## TABLES 1, 1A, 1B, & 1C

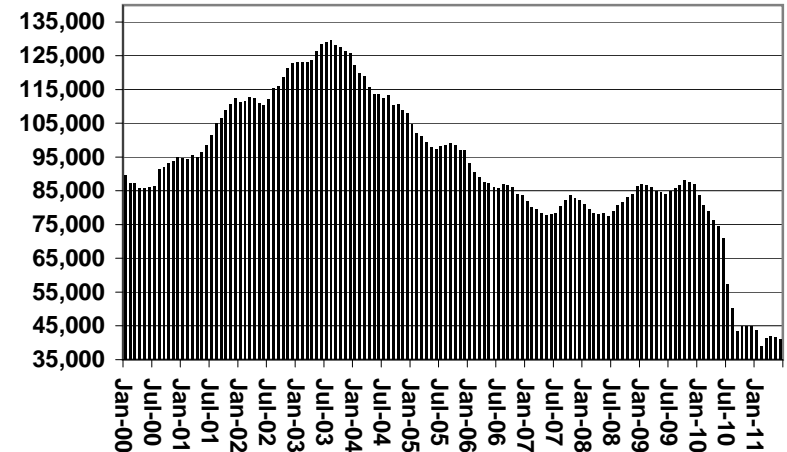
### COMPARISON OF CASES, RECIPIENTS, PAYMENTS & AVERAGE PAYMENTS

FOR 2000, 2001, 2002, 2003, 2004, 2005, 2006, 2007, 2008, 2009, 2010, & 2011

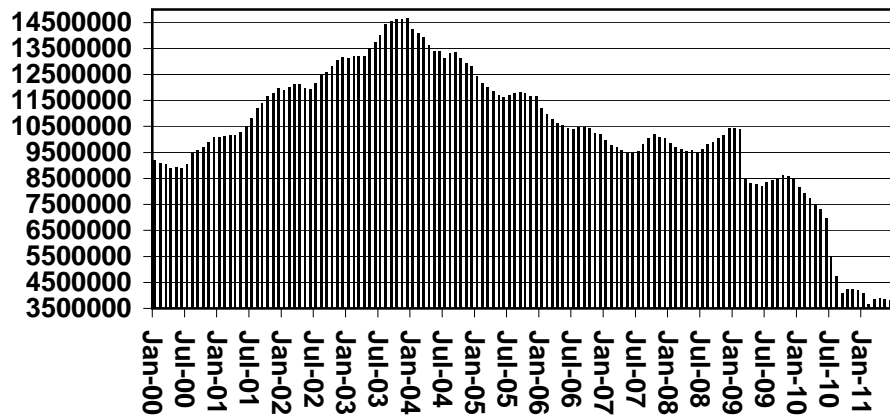
**Cases**



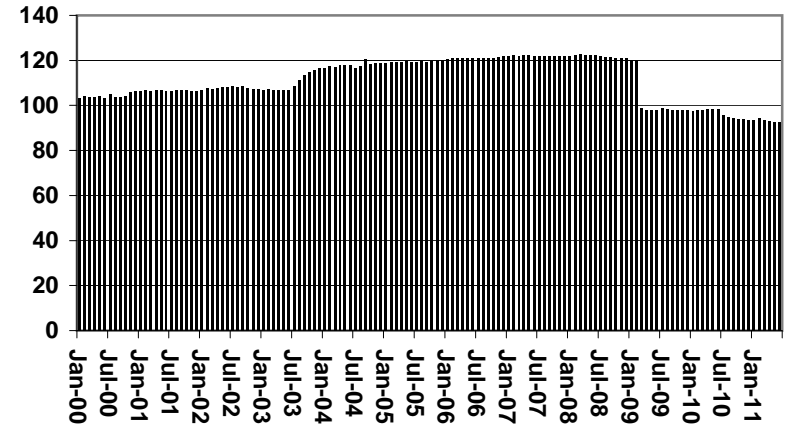
**Recipients**



**Payments**



**Average Payments Per Recipient**



**TABLE 1**  
**CASH ASSISTANCE: ARIZONA 1/**

	JUNE 2011								CHANGE FROM			MAY 2011			JUNE 2010		
	FAMILIES	(RECIP.)	ADULTS	CHILDREN	TOTAL	AVERAGE	AVERAGE		FAMILIES	PERSONS	TOTAL	FAMILIES	PERSONS	TOTAL	FAMILIES	PERSONS	TOTAL
	(CASES)				PAYMENTS	PAYMENT/ CASE	PAYMENT/ RECIP.		(CASES)	(RECIP.)	PAYMENTS	(CASES)	(RECIP.)	PAYMENTS	(CASES)	(RECIP.)	PAYMENTS
ARIZONA	17,021	37,957	9,809	28,148	3,632,820	213.43	95.71		(209)	(466)	(41,005)	(14,388)	(28,555)	(3,073,148)			
REGION																	
MARICOPA	10,481	23,986	6,138	17,848	2,244,788	214.18	93.59		(103)	(223)	(15,088)	(8,951)	(17,831)	(1,881,389)			
NORTHERN	964	2,133	557	1,576	200,037	207.51	93.78		(10)	(11)	(2,328)	(1,585)	(3,746)	(412,472)			
APACHE	36	71	24	47	6,849	190.25	96.46		(6)	(11)	(989)	(55)	(127)	(14,900)			
COCONINO	59	148	29	119	13,654	231.42	92.26		(2)	(5)	(453)	(96)	(164)	(17,495)			
MOHAVE	573	1,221	313	908	118,016	205.96	96.66		2	25	896	(399)	(681)	(81,715)			
NAVAJO	296	693	191	502	61,518	207.83	88.77		(4)	(20)	(1,782)	(1,035)	(2,774)	(298,362)			
CENTRAL	1,871	3,944	998	2,946	397,574	212.49	100.80		(29)	(64)	(6,427)	(919)	(1,894)	(196,717)			
GILA	408	866	306	560	98,897	242.39	114.20		10	7	1,041	(209)	(438)	(50,971)			
LA PAZ	62	128	30	98	12,459	200.95	97.34		0	3	(166)	(77)	(153)	(14,480)			
PINAL	760	1,587	358	1,229	153,573	202.07	96.77		(39)	(74)	(7,302)	(633)	(1,303)	(131,266)			
YAVAPAI	245	467	93	374	47,488	193.83	101.69		(11)	(23)	(2,450)	(252)	(443)	(49,831)			
YUMA	396	896	211	685	85,157	215.04	95.04		13	15	2,057	(388)	(754)	(79,410)			
SOUTHERN	3,705	7,894	2,116	5,778	790,421	213.34	100.13		(69)	(160)	(16,769)	581	1,006	58,634			
COCHISE	324	641	146	495	67,680	208.89	105.59		(5)	(8)	(488)	(282)	(505)	(57,699)			
GRAHAM	225	456	148	308	51,486	228.83	112.91		(8)	(8)	(1,589)	(8)	14	(1,612)			
GREENLEE	16	39	11	28	3,554	222.13	91.13		(1)	(3)	(291)	(10)	(14)	(1,763)			
PIMA	3,048	6,565	1,776	4,789	648,549	212.78	98.79		(52)	(131)	(13,698)	974	1,678	138,452			
SANTA CRUZ	92	193	35	158	19,152	208.17	99.23		(3)	(10)	(703)	(93)	(167)	(18,744)			

1/EXCLUDES: PRIOR MONTH NET TOTALS OF: 440 CASES; 1,101 RECIPIENTS; \$146,220.  
GRANT DIVERSION TOTALS OF: 2,567 CASES; \$1,955,572.  
ZERO PAY TOTALS OF 4,366 CASES; 12,849 RECIPIENTS.

CASES WITH GRANT UNDER \$100 (SEE TABLE 1B).

	CURRENT MO. CASES	CURRENT MO. RECIP.	CURRENT MO. DOLLARS	PRIOR MO. CASES	PRIOR MO. RECIP.	PRIOR MO. DOLLARS
PASQUA/YAQUI	240	677	\$73,406	17	51	\$5,678
WM APACHE	0	0	\$0	0	0	\$0
SALT RIVER	74	244	\$24,468	7	20	\$1,014
SAN CARLOS	445	947	\$110,268	34	72	\$7,869
HOPI	100	272	\$22,873	5	10	\$656
<b>TOTAL</b>	<b>859</b>	<b>2,140</b>	<b>\$231,015</b>	<b>63</b>	<b>153</b>	<b>\$15,217</b>

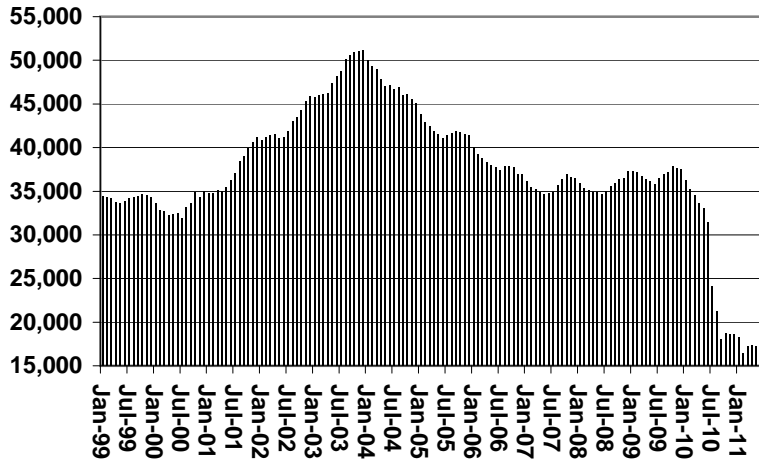
# CHART 1

## CASH ASSISTANCE PROGRAM

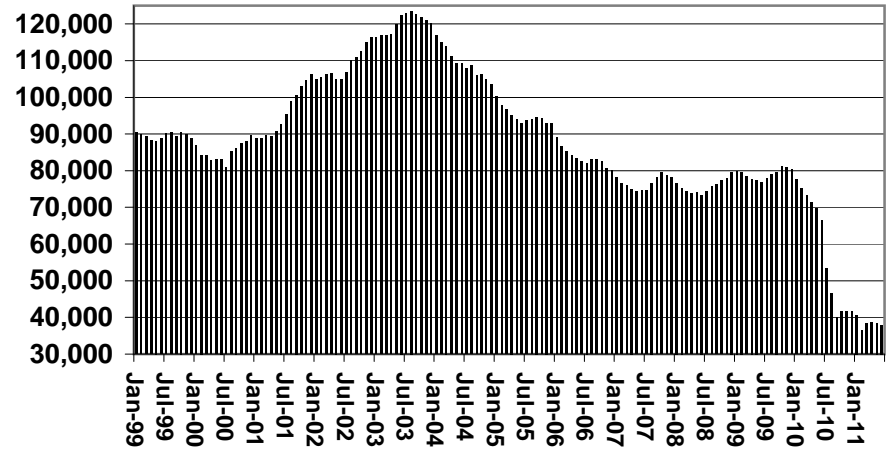
### COMPARISON OF CASES, RECIPIENTS, PAYMENTS & AVERAGE PAYMENTS

FOR 1999, 2000, 2001, 2002, 2003, 2004, 2005, 2006, 2007, 2008, 2009, 2010, & 2011

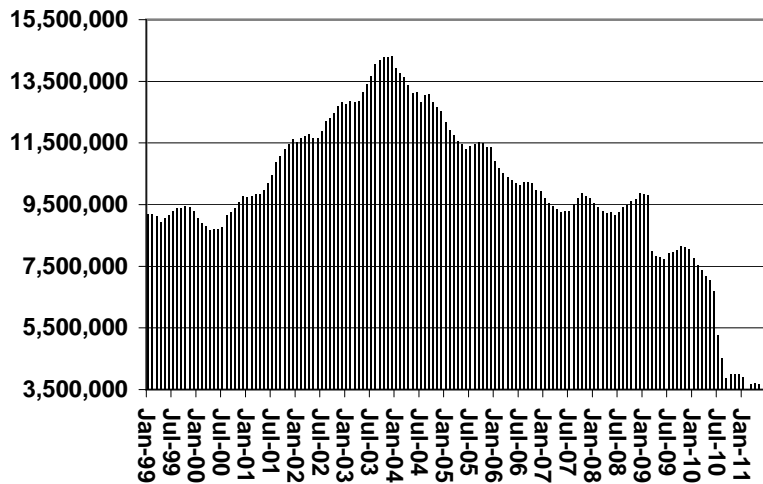
**Cases**



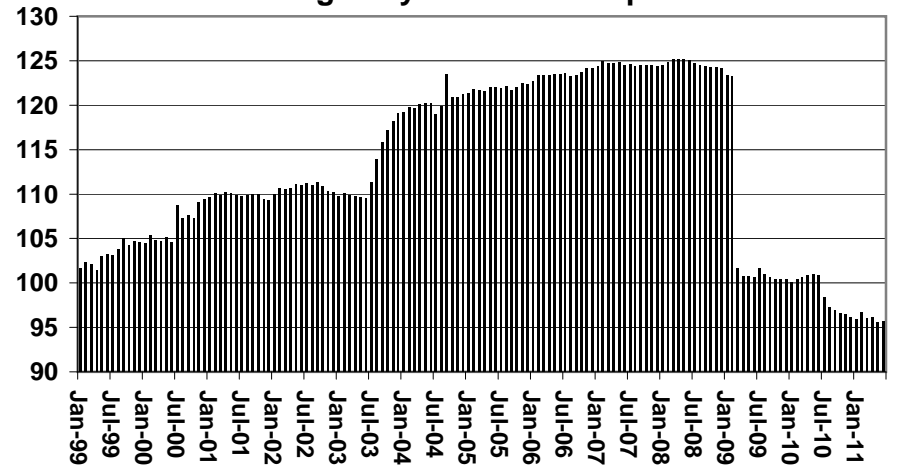
**Recipients**



**Payments**



**Average Payment Per Recipient**



**TABLE 1A  
CA-UP**

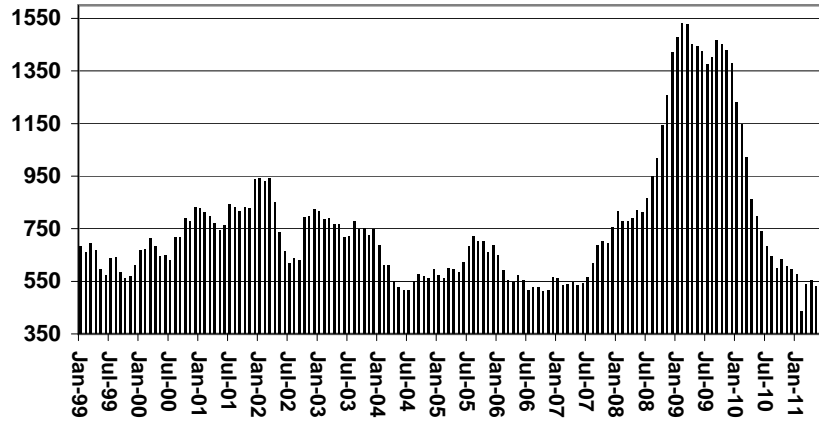
**CASH ASSISTANCE UNEMPLOYED PARENT PROGRAM: ARIZONA 1**

	JUNE 2011								CHANGE FROM			JUNE 2010		
									MAY 2011					
	FAMILIES (CASES)	PERSONS (RECIP.)	ADULTS	CHILDREN	TOTAL PAYMENTS	AVERAGE PAYMENT/ CASE	AVERAGE PAYMENT/ RECIP.	FAMILIES (CASES)	PERSONS (RECIP.)	TOTAL PAYMENTS	FAMILIES (CASES)	PERSONS (RECIP.)	TOTAL PAYMENTS	
ARIZONA	482	1,827	767	1,060	138,905	288.18	76.03	(49)	(135)	(11,249)	(259)	(815)	(66,578)	
REGION														
MARICOPA	287	1,106	430	676	84,107	293.06	76.05	(37)	(101)	(8,919)	(231)	(719)	(59,670)	
NORTHERN	36	141	69	72	10,858	301.61	77.01	(2)	(6)	(116)	13	57	4,468	
APACHE	5	21	10	11	1,586	317.20	75.52	3	14	981	5	21	1,586	
COCONINO	1	3	2	1	347	347.00	115.67	(2)	(11)	(628)	1	3	347	
MOHAVE	23	89	44	45	7,066	307.22	79.39	(1)	(6)	(119)	7	30	2,315	
NAVAJO	7	28	13	15	1,859	265.57	66.39	(2)	(3)	(350)	0	3	220	
CENTRAL	39	139	57	82	10,274	263.44	73.91	(1)	(3)	(256)	(20)	(88)	(5,760)	
GILA	0	0	0	0	0	0.00	0.00	0	0	0	(5)	(19)	(1,389)	
LA PAZ	1	4	0	4	335	335.00	83.75	(2)	(9)	(624)	(3)	(10)	(657)	
PINAL	22	72	30	42	5,187	235.77	72.04	1	6	368	(12)	(59)	(3,714)	
YAVAPAI	9	33	13	20	2,478	275.33	75.09	1	6	496	3	14	1,105	
YUMA	7	30	14	16	2,274	324.86	75.80	(2)	(7)	(694)	(6)	(13)	(1,356)	
SOUTHERN	120	441	211	230	33,666	280.55	76.34	(8)	(24)	(1,760)	(18)	(66)	(5,365)	
COCHISE	2	5	3	2	498	249.00	99.60	(2)	(7)	(386)	(2)	(7)	(402)	
GRAHAM	2	7	4	3	612	0.00	0.00	0	0	0	0	0	123	
GREENLEE	0	0	0	0	0	0.00	0.00	0	0	0	0	0	0	
PIMA	114	425	203	222	32,217	282.61	75.80	(5)	(13)	(1,102)	(18)	(63)	(5,425)	
SANTA CRUZ	2	4	1	3	339	169.50	0.00	(1)	(4)	(272)	2	4	339	
1/EXCLUDES: PRIOR MONTH NET TOTALS OF: 43 CASES; 176 RECIPIENTS; \$22,449. GRANT DIVERSION TOTALS OF: 0 CASES; \$0. ZERO PAY TOTALS OF 12 CASES; 42 RECIPIENTS.								CURRENT MO. CASES	CURRENT MO. RECIP.	CURRENT MO. DOLLARS	PRIOR MO. CASES	PRIOR MO. RECIP.	PRIOR MO. DOLLARS	
								PASQUAYYAQUI	10	38	\$3,612	3	13	\$2,461
								WM APACHE	0	0	\$0	0	0	\$0
								SALT RIVER	0	0	\$0	0	0	\$0
								SAN CARLOS	1	5	\$196	0	0	\$0
								HOPI	0	0	\$0	0	0	\$0
CASES WITH GRANT UNDER \$100 (SEE TABLE 1C).								TOTAL	11	43	\$3,808	3	13	\$2,461

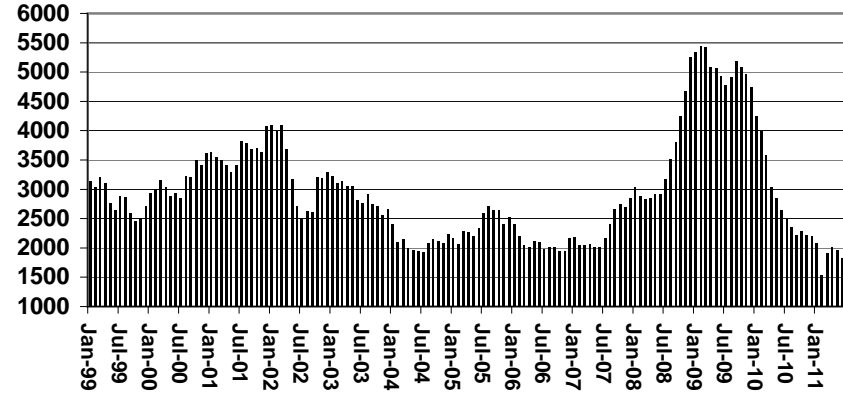
# CHART 1A

## CASH ASSISTANCE UNEMPLOYED PARENT PROGRAM COMPARISON OF CASES, RECIPIENTS, PAYMENTS & AVERAGE PAYMENTS FOR 1999, 2000, 2001, 2002, 2003, 2004, 2005, 2006, 2007, 2008, 2009, 2010, & 2011

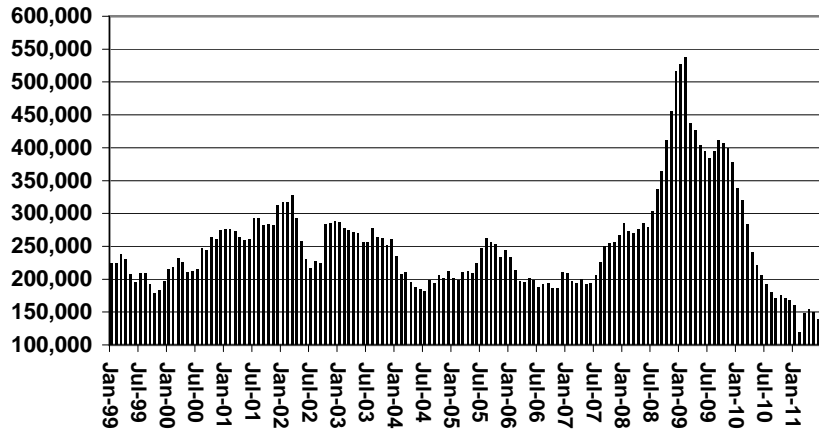
### Cases



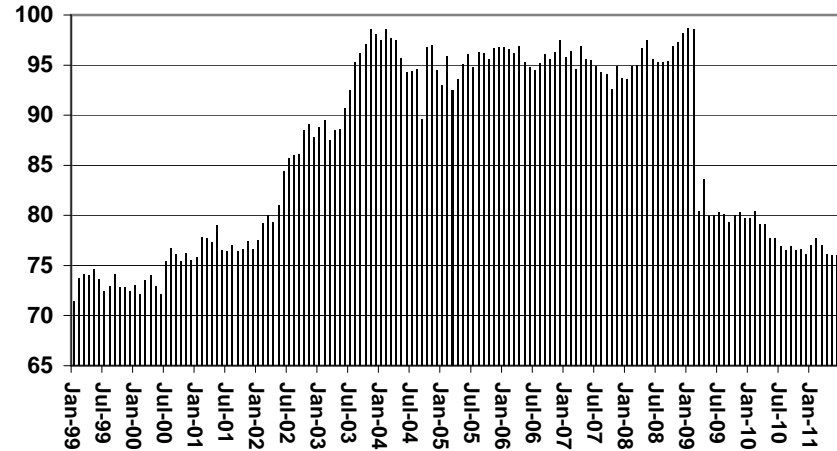
### Recipients



### Payments



### Average Payment Per Recipient





**TABLE 1B 1/**

**CASH ASSISTANCE: ARIZONA  
CASES WITH GRANT UNDER \$100**

	JUNE 2011							CHANGE FROM			JUNE 2010		
					AVERAGE	AVERAGE							
	FAMILIES (CASES)	PERSONS (RECIP.)	ADULTS	CHILDREN	TOTAL PAYMENTS	PAYMENT/ CASE	PAYMENT/ RECIP.	FAMILIES (CASES)	PERSONS (RECIP.)	TOTAL PAYMENTS	FAMILIES (CASES)	PERSONS (RECIP.)	TOTAL PAYMENTS
ARIZONA	638	1,329	361	968	45,955	72.03	34.58	42	78	4,225	(199)	(356)	(10,456)
REGION													
MARICOPA	391	815	208	607	28,681	73.35	35.19	31	37	2,777	(168)	(346)	(8,541)
NORTHERN	47	88	32	56	2,919	62.11	33.17	16	27	812	3	4	(170)
APACHE	0	0	0	0	18	0.00	0.00	(1)	(2)	(17)	(2)	(4)	(92)
COCONINO	2	4	2	2	86	43.00	21.50	0	0	55	0	(1)	(81)
MOHAVE	33	59	22	37	2,022	61.27	34.27	13	22	677	2	0	(71)
NAVAJO	12	25	8	17	793	66.08	31.72	4	7	97	3	9	74
CENTRAL	57	129	39	90	4,098	71.89	31.77	5	23	493	(26)	(19)	(2,027)
GILA	2	4	1	3	152	76.00	38.00	0	(1)	45	(4)	(7)	(411)
LA PAZ	3	6	3	3	272	90.67	45.33	(3)	(5)	(140)	(7)	(13)	(279)
PINAL	26	60	16	44	1,910	73.46	31.83	5	18	252	(1)	17	(116)
YAVAPAI	14	29	8	21	912	65.14	31.45	3	8	209	(7)	(13)	(289)
YUMA	12	30	11	19	852	71.00	28.40	0	3	127	(7)	(3)	(932)
SOUTHERN	143	297	82	215	10,257	71.73	34.54	(10)	(9)	143	(8)	5	282
COCHISE	9	15	5	10	715	79.44	47.67	2	3	289	(5)	(12)	(435)
GRAHAM	1	2	1	1	104	104.00	52.00	(2)	(4)	(230)	(5)	(13)	(227)
GREENLEE	0	0	0	0	0	0.00	0.00	0	0	0	0	0	(58)
PIMA	131	272	74	198	9,272	70.78	34.09	(9)	(7)	136	8	36	1,286
SANTA CRUZ	2	8	2	6	166	83.00	20.75	(1)	(1)	(52)	(6)	(6)	(284)

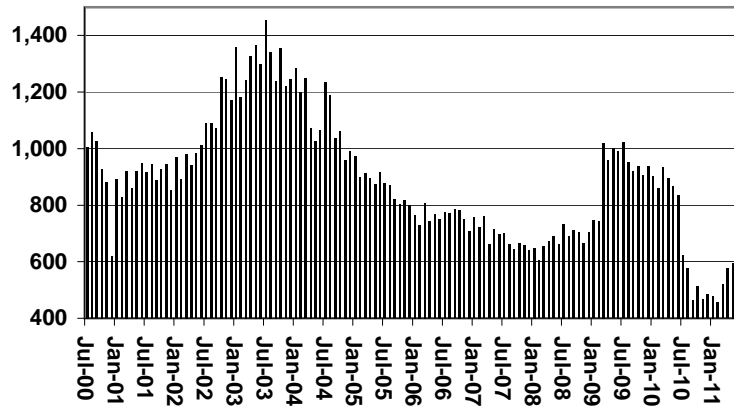
EXCLUDES: PRIOR MONTH NET TOTALS OF 391 CASES; 892 RECIPIENTS; \$25,697.

# CHART 1B

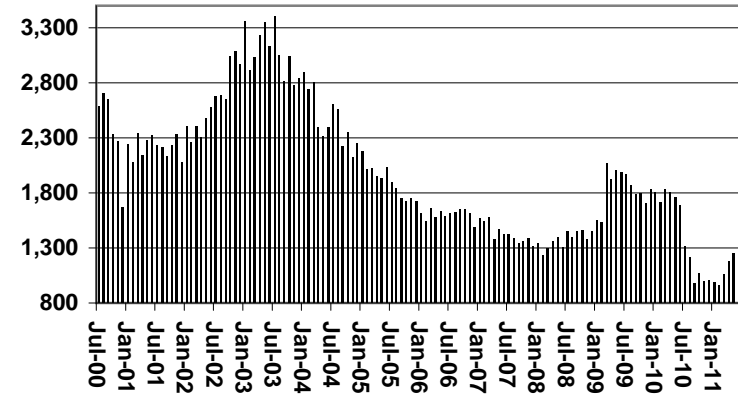
## CASH ASSISTANCE PROGRAM CASES WITH GRANT UNDER \$100

FOR 1999, 2000, 2001, 2002, 2003, 2004, 2005, 2006, 2007, 2008, 2009, 2010, & 2011

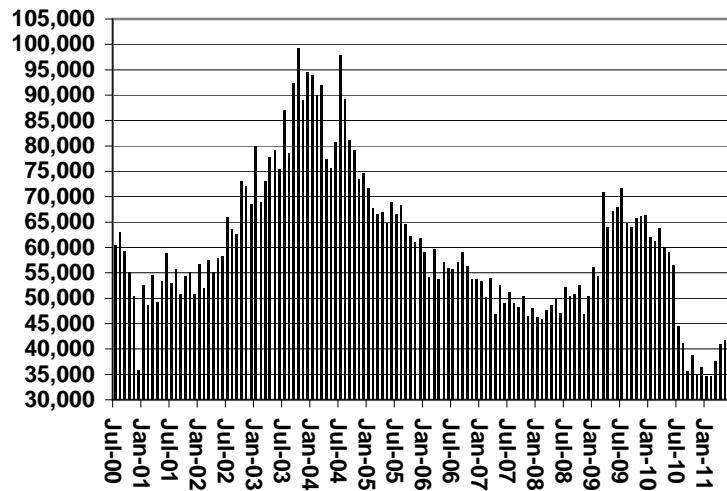
Cases



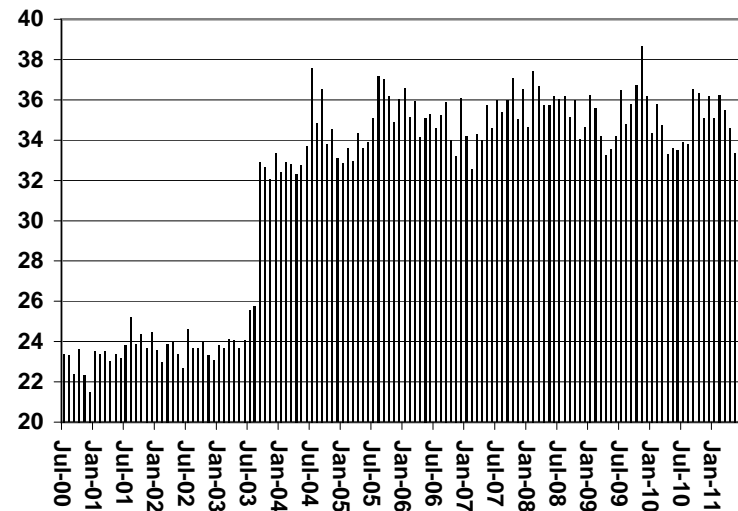
Recipients



Payments



Average Payment Per Recipient



**TABLE 1C 1/**

**CASH ASSISTANCE UNEMPLOYED PARENT PROGRAM: ARIZONA  
CASES WITH GRANT UNDER \$100**

	JUNE 2011							CHANGE FROM			JUNE 2010		
					AVERAGE	AVERAGE							
	FAMILIES (CASES)	PERSONS (RECIP.)	ADULTS	CHILDREN	TOTAL PAYMENTS	PAYMENT/ CASE	PAYMENT/ RECIP.	FAMILIES (CASES)	PERSONS (RECIP.)	TOTAL PAYMENTS	FAMILIES (CASES)	PERSONS (RECIP.)	TOTAL PAYMENTS
ARIZONA	7	23	11	12	506	72.29	22.00	(9)	(28)	(614)	(19)	(66)	(983)
REGION													
MARICOPA	4	10	6	4	230	57.50	23.00	(8)	(25)	(524)	(16)	(56)	(948)
NORTHERN	0	0	0	0	0	0.00	0.00	0	0	0	0	0	0
APACHE	0	0	0	0	0	0.00	0.00	0	0	0	0	0	0
COCONINO	0	0	0	0	0	0.00	0.00	0	0	0	0	0	0
MOHAVE	0	0	0	0	0	0.00	0.00	0	0	0	0	0	0
NAVAJO	0	0	0	0	0	0.00	0.00	0	0	0	0	0	0
CENTRAL	1	5	2	3	96	96.00	19.20	0	0	0	(1)	(5)	5
GILA	0	0	0	0	0	0.00	0.00	0	0	0	0	0	0
LA PAZ	0	0	0	0	0	0.00	0.00	0	0	0	0	0	0
PINAL	1	5	2	3	96	96.00	19.20	0	0	0	0	0	42
YAVAPAI	0	0	0	0	0	0.00	0.00	0	0	0	0	0	0
YUMA	0	0	0	0	0	0.00	0.00	0	0	0	(1)	(5)	(37)
SOUTHERN	2	8	3	5	180	90.00	22.50	(1)	(3)	(90)	(2)	(5)	(40)
COCHISE	0	0	0	0	0	0.00	0.00	0	0	0	0	0	0
GRAHAM	0	0	0	0	0	0.00	0.00	0	0	0	0	0	0
GREENLEE	0	0	0	0	0	0.00	0.00	0	0	0	0	0	0
PIMA	2	8	3	5	180	90.00	22.50	(1)	(3)	(90)	(2)	(5)	(40)
SANTA CRUZ	0	0	0	0	0	0.00	0.00	0	0	0	0	0	0

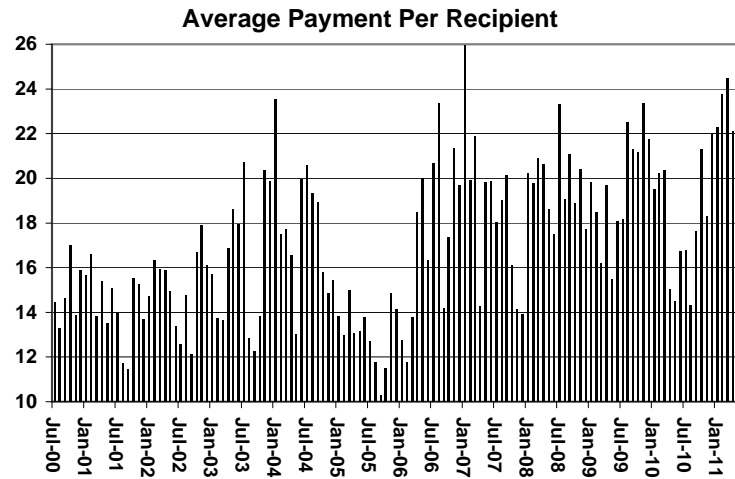
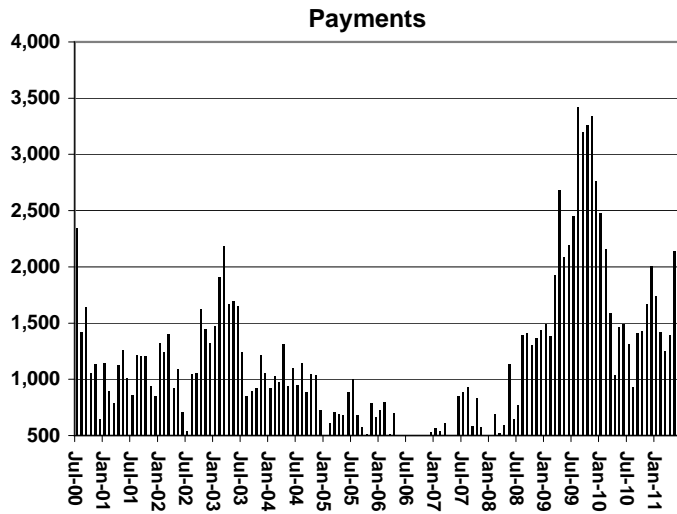
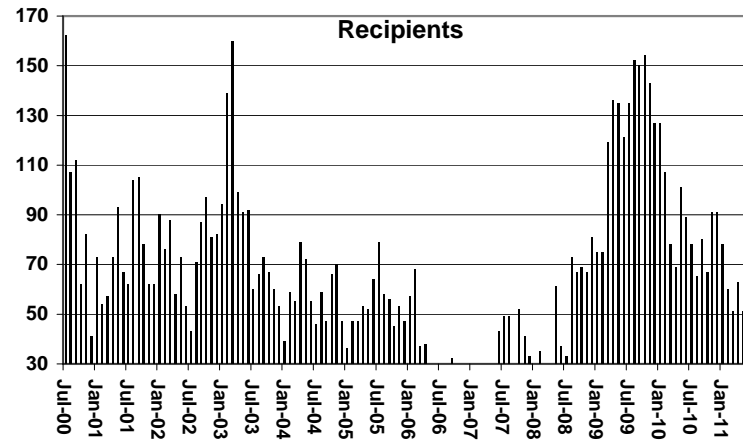
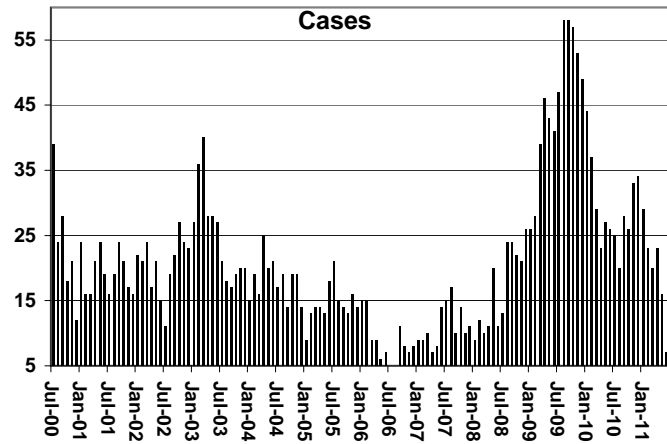
EXCLUDES: PRIOR MONTH NET TOTALS OF 20 CASES; 81 RECIPIENTS; \$1,420.

# CHART 1C

## CASH ASSISTANCE UNEMPLOYED PARENT PROGRAM

### CASES WITH GRANT UNDER \$100

FOR 1999, 2000, 2001, 2002, 2003, 2004, 2005, 2006, 2007, 2008, 2009, 2010, & 2011



**TABLE 4**

**TUBERCULOSIS CONTROL: ARIZONA 1/**

	JUNE 2011						CHANGE FROM					
							MAY 2011			JUNE 2010		
	NUMBER OF CASES	PERSONS (RECIP.)	TOTAL PAYMENTS	AVERAGE PAYMENT/ CASE	AVERAGE PAYMENT/ RECIP.		NUMBER OF CASES	PERSONS (RECIP.)	TOTAL PAYMENTS	NUMBER OF CASES	PERSONS (RECIP.)	TOTAL PAYMENTS
ARIZONA	6	6	778	129.67	129.67		1	1	108	5	5	605
REGION												
MARICOPA	6	6	778	129.67	129.67		1	1	108	5	5	605
NORTHERN	0	0	0	0.00	0.00		0	0	0	0	0	0
APACHE	0	0	0	0.00	0.00		0	0	0	0	0	0
COCONINO	0	0	0	0.00	0.00		0	0	0	0	0	0
MOHAVE	0	0	0	0.00	0.00		0	0	0	0	0	0
NAVAJO	0	0	0	0.00	0.00		0	0	0	0	0	0
CENTRAL	0	0	0	0.00	0.00		0	0	0	0	0	0
GILA	0	0	0	0.00	0.00		0	0	0	0	0	0
LA PAZ	0	0	0	0.00	0.00		0	0	0	0	0	0
PINAL	0	0	0	0.00	0.00		0	0	0	0	0	0
YAVAPAI	0	0	0	0.00	0.00		0	0	0	0	0	0
YUMA	0	0	0	0.00	0.00		0	0	0	0	0	0
SOUTHERN	0	0	0	0.00	0.00		0	0	0	0	0	0
COCHISE	0	0	0	0.00	0.00		0	0	0	0	0	0
GRAHAM	0	0	0	0.00	0.00		0	0	0	0	0	0
GREENLEE	0	0	0	0.00	0.00		0	0	0	0	0	0
PIMA	0	0	0	0.00	0.00		0	0	0	0	0	0
SANTA CRUZ	0	0	0	0.00	0.00		0	0	0	0	0	0

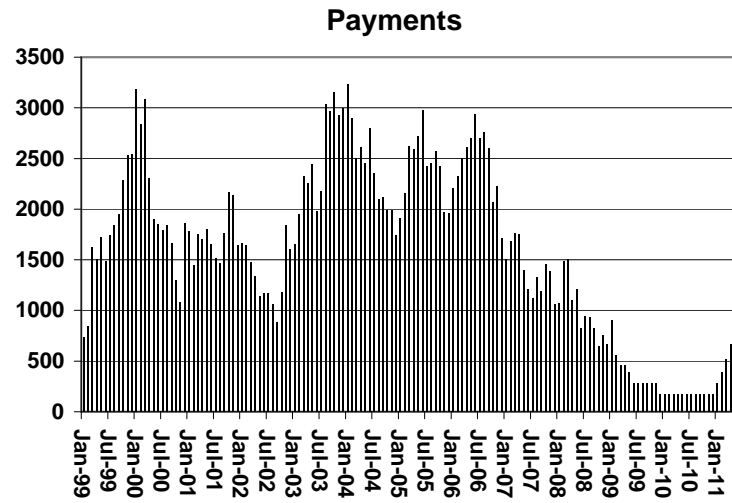
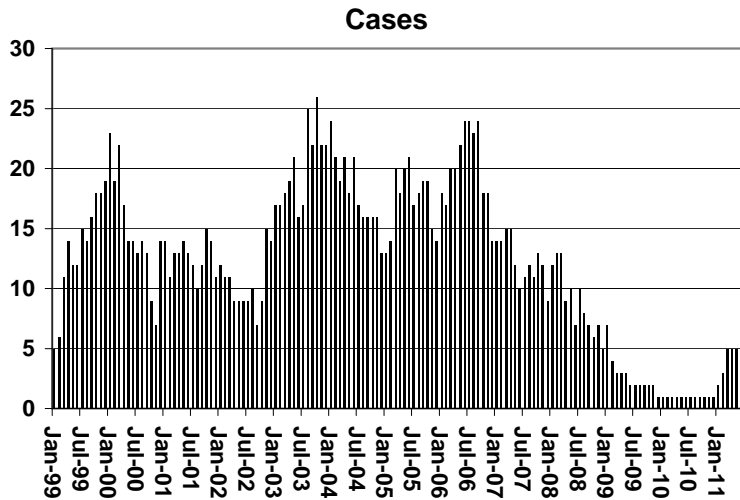
1/EXCLUDES: PRIOR MONTH NET TOTALS OF : 0 CASES; 0 RECIPIENTS; \$0.

# CHART 4

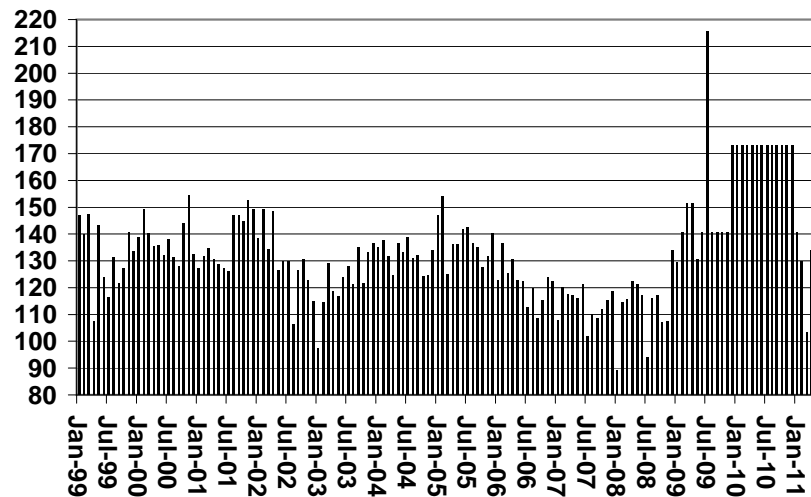
## TUBERCULOSIS CONTROL PROGRAM

### COMPARISON OF CASES, PAYMENTS & AVERAGE PAYMENTS

FOR 1999, 2000, 2001, 2002, 2003, 2004, 2005, 2006, 2007, 2008, 2009, 2010, & 2011



### Average Payment Per Case



**TABLE 6**

**SUPPLEMENTAL NUTRITION ASSISTANCE PROGRAM: ARIZONA 1**

	CHANGE FROM												
	JUNE 2011							MAY 2011			JUNE 2010		
	HOUSEHOLDS	PERSONS	ADULTS	CHILDREN	TOTAL PAYMENTS ISSUANCE	AVERAGE PAYMT./ HOUSEHOLD	AVERAGE PAYMT./ PERSON	HOUSEHOLDS	PERSONS	TOTAL PAYMENTS ISSUANCE	HOUSEHOLDS	PERSONS	TOTAL PAYMENTS ISSUANCE
ARIZONA	470,060	1,083,451	558,985	524,466	136,793,311	291.01	126.26	7,367	20,017	2,214,323	19,750	46,084	4,701,159
REGION													
MARICOPA	251,457	584,436	282,104	302,332	74,458,785	296.11	127.40	4,478	11,743	1,430,310	4,797	15,830	1,696,407
NORTHERN	53,825	130,482	73,480	57,002	16,172,428	300.46	123.94	637	2,035	172,070	2,604	4,753	444,811
APACHE	10,185	27,898	15,240	12,658	3,427,070	336.48	122.84	150	457	46,064	500	603	57,613
COCONINO	9,619	23,805	12,654	11,151	2,911,664	302.70	122.31	124	332	20,784	256	529	(8,103)
MOHAVE	20,691	44,110	26,517	17,593	5,531,704	267.35	125.41	226	679	55,870	1,032	2,173	226,491
NAVAJO	13,330	34,669	19,069	15,600	4,301,990	322.73	124.09	137	567	49,352	816	1,448	168,810
CENTRAL	62,212	147,327	79,992	67,335	18,043,340	290.03	122.47	1,228	3,682	331,743	4,249	10,140	879,266
GILA	6,120	13,394	7,788	5,606	1,736,598	283.76	129.65	10	78	590	317	815	71,929
LA PAZ	2,009	4,126	2,382	1,744	523,961	260.81	126.99	20	83	3,862	84	148	7,853
PINAL	22,837	56,559	29,307	27,252	7,080,316	310.04	125.18	471	1,350	152,837	2,010	5,156	502,364
YAVAPAI	15,138	30,578	18,456	12,122	3,753,843	247.97	122.76	211	461	30,066	1,094	1,913	188,296
YUMA	16,108	42,670	22,059	20,611	4,948,622	307.22	115.97	516	1,710	144,388	744	2,108	108,824
SOUTHERN	102,566	221,206	123,409	97,797	28,118,758	274.15	127.12	1,024	2,557	280,200	8,100	15,361	1,680,675
COCHISE	10,794	23,299	13,362	9,937	2,862,352	265.18	122.85	37	108	10,837	909	1,775	180,247
GRAHAM	3,566	8,196	4,553	3,643	1,037,542	290.95	126.59	22	98	13,851	315	477	62,365
GREENLEE	503	1,110	634	476	142,651	283.60	128.51	(5)	(2)	1,630	(12)	(32)	451
PIMA	83,213	176,601	98,744	77,857	22,675,540	272.50	128.40	925	2,237	249,590	6,513	12,202	1,351,807
SANTA CRUZ	4,490	12,000	6,116	5,884	1,400,673	311.95	116.72	45	116	4,292	375	939	85,805

1/EXCLUDES: PRIOR MONTH NET TOTALS OF : 10,103 CASES; 25,526 RECIPIENTS; \$1,804,132.

AGED CANCELATIONS: 12,135 CASES; 15,106 RECIPIENTS; \$694,704.

SNAP CONVERSIONS: 0 CASES; 0 RECIPIENTS; \$0.

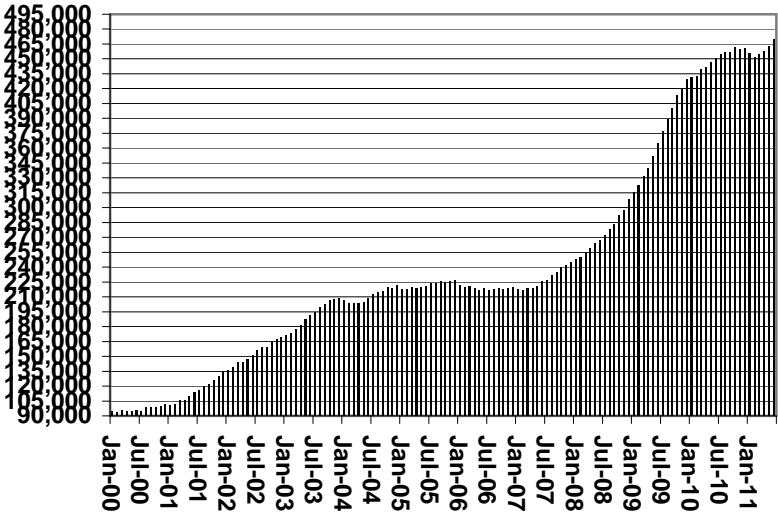
SNAP CHILD ONLY: 59,769 CASES; 141,459 RECIPIENTS; \$21,332,137.

SNAP ZERO PAY: 7,430 CASES; 28,833 RECIPIENTS.

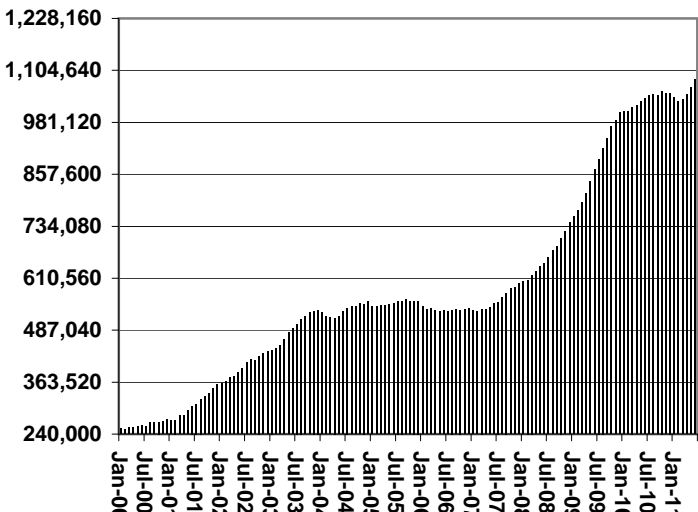
# CHART 6

## SUPPLEMENTAL NUTRITION ASSISTANCE PROGRAM (SNAP) COMPARISON OF HOUSEHOLDS, RECIPIENTS, PAYMENTS & AVERAGE PAYMENTS FOR 1999, 2000, 2001, 2002, 2003, 2004, 2005, 2006, 2007, 2008, 2009, 2010, & 2011

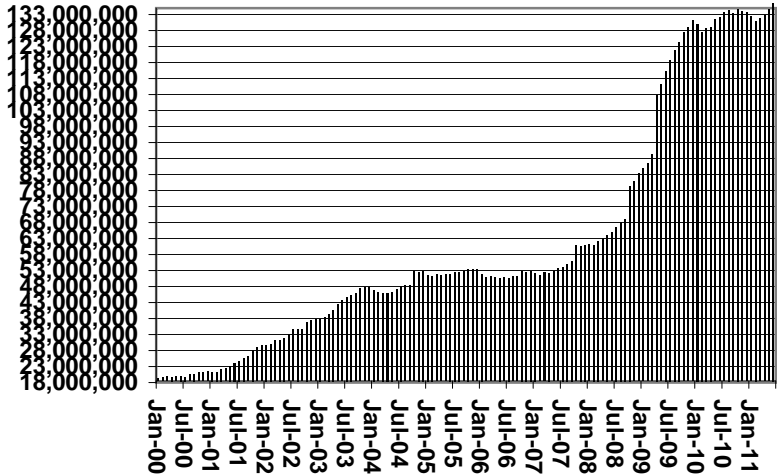
**Households**



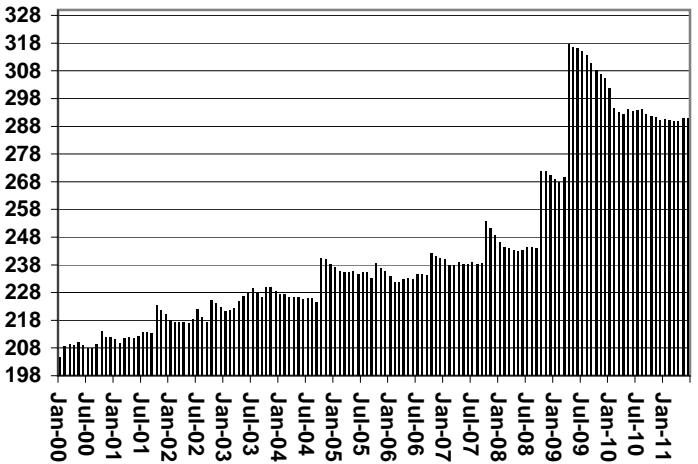
**Recipients**



**Payments**



**Average Payment Per Household**





**TABLE 7A**  
**MEDICAL ASSISTANCE PROGRAM**  
**RECIPIENTS**

**JUNE 2011**

	SOBRA WOMAN 133% FPL	SOBRA CHILD	ADULT W/O CHILD 100% FPL	FOSTER CARE	1931 36% FPL	FEDERAL EMERGENCY SERVICES	INFANTS	ADULT W/O CHILD 40% FPL	MEDICAL W/SPEND DOWN	SOBRA WOMAN 100% FPL	SOBRA CHILD 100% FPL	TRANSITIONAL MEDICAL T1 - T4	1931 100% FPL	YATI	OTHER	TOTAL CASES
ARIZONA	10,941	71,346	64,988	12,983	343,386	51,519	45,248	176,137	5,157	4,119	236,186	42,657	126,518	332	29,585	1,221,102
REGION																
MARICOPA	6,036	40,669	32,009	7,051	192,122	40,408	26,772	89,988	2,775	2,204	139,194	21,828	65,690	182	15,376	682,304
NORTHERN	1,252	7,813	7,794	672	43,747	1,006	4,628	26,066	790	540	23,550	4,742	15,011	15	3,083	140,709
APACHE	202	1,594	1,128	35	11,248	74	875	5,954	157	114	4,308	866	2,741	0	428	29,724
COCONINO	292	1,531	1,583	135	8,285	378	1,068	4,668	122	107	4,876	980	3,049	10	460	27,544
MOHAVE	423	2,294	3,224	355	11,604	356	1,422	8,247	366	203	8,597	1,687	5,403	4	1,632	45,817
NAVAJO	335	2,394	1,859	147	12,610	198	1,263	7,197	145	116	5,769	1,209	3,818	1	563	37,624
CENTRAL	1,663	9,569	9,886	1,527	43,929	3,717	5,933	22,402	687	567	30,122	6,712	19,190	36	4,462	160,402
GILA	100	661	764	101	4,717	101	483	2,573	67	35	1,929	446	1,340	1	361	13,679
LA PAZ	31	279	263	19	1,288	134	140	802	8	12	654	166	377	0	166	4,339
PINAL	576	4,280	3,048	597	18,760	1,174	2,269	8,889	190	199	11,079	2,251	6,460	17	1,343	61,132
YAVAPAI	410	1,728	2,803	510	7,562	1,087	1,160	5,246	225	115	6,191	1,670	4,101	14	1,254	34,076
YUMA	546	2,621	3,008	300	11,602	1,221	1,881	4,892	197	206	10,269	2,179	6,912	4	1,338	47,176
SOUTHERN	1,990	13,295	15,299	3,733	63,588	6,388	7,915	37,681	905	808	43,320	9,375	26,627	99	6,664	237,687
COCHISE	212	1,341	1,851	241	6,765	401	789	3,374	129	107	4,417	928	2,808	6	905	24,274
GRAHAM	118	468	511	73	2,865	19	361	1,484	46	24	1,415	360	894	1	185	8,824
GREENLEE	10	52	64	8	409	3	54	240	10	6	245	40	98	1	34	1,274
PIMA	1,544	10,748	11,972	3,378	50,258	5,563	6,276	31,385	691	635	34,124	7,413	20,815	91	5,036	189,929
SANTA CRUZ	106	686	901	33	3,291	402	435	1,198	29	36	3,119	634	2,012	0	504	13,386

**TABLE 7B**  
**MEDICAL ASSISTANCE PROGRAM**  
**RECIPIENTS**

**CHANGE FROM**

**MAY 2011**

	SOBRA WOMAN 133% FPL	SOBRA CHILD	ADULT W/O CHILD 100% FPL	FOSTER CARE	1931 36% FPL	FEDERAL EMERGENCY SERVICES	INFANTS	ADULT W/O CHILD 40% FPL	MEDICAL W/SPEND DOWN	SOBRA WOMAN 100% FPL	SOBRA CHILD 100% FPL	TRANSITIONAL MEDICAL T1 - T4	1931 100% FPL	YATI	OTHER	TOTAL CASES
ARIZONA	84	3,002	830	156	2,742	981	(3)	2,031	(1,452)	(28)	569	(1,184)	158	(2)	255	8,139
REGION																
MARICOPA	129	1,299	334	127	2,639	1,017	(77)	1,240	(769)	(21)	405	70	(8)	(1)	170	6,554
NORTHERN	(5)	505	80	8	(271)	(22)	9	148	(191)	(25)	87	(103)	32	(1)	11	262
APACHE	(1)	188	16	0	(85)	0	2	39	(31)	(6)	73	(10)	69	0	9	263
COCONINO	(6)	105	(5)	(2)	(224)	(25)	2	11	(26)	(7)	39	(51)	(3)	(2)	11	(183)
MOHAVE	12	87	67	7	(53)	3	17	46	(90)	2	(1)	(10)	(43)	1	(2)	43
NAVAJO	(10)	125	2	3	91	0	(12)	52	(44)	(14)	(24)	(32)	9	0	(7)	139
CENTRAL	(4)	504	186	9	231	(37)	(10)	200	(219)	12	279	(915)	288	(1)	18	541
GILA	(3)	23	(12)	0	20	(16)	(18)	(43)	(17)	(6)	(13)	(8)	(9)	(1)	(3)	(106)
LA PAZ	(1)	17	(7)	1	64	1	(1)	(23)	(6)	3	(36)	1	(22)	0	2	(7)
PINAL	(17)	168	47	3	54	(37)	1	93	(59)	6	13	(51)	5	0	1	227
YAVAPAI	(3)	98	49	5	32	(27)	17	88	(68)	(4)	(91)	11	(33)	(2)	7	79
YUMA	20	198	109	0	61	42	(9)	85	(69)	13	406	(868)	347	2	11	348
SOUTHERN	(36)	694	230	12	143	23	75	443	(273)	6	(202)	(236)	(154)	1	56	782
COCHISE	(4)	85	(43)	(2)	(138)	(17)	4	15	(29)	11	(59)	12	(50)	2	8	(205)
GRAHAM	1	29	28	4	43	0	11	0	(16)	(1)	(31)	13	(16)	0	11	76
GREENLEE	1	(3)	2	0	(22)	0	(2)	1	(1)	0	(2)	(7)	(5)	0	0	(38)
PIMA	(40)	486	219	10	318	54	69	417	(220)	1	(89)	(203)	(84)	0	15	953
SANTA CRUZ	6	97	24	0	(58)	(14)	(7)	10	(7)	(5)	(21)	(51)	1	(1)	22	(4)

**TABLE 7C**  
**MEDICAL ASSISTANCE PROGRAM**  
**RECIPIENTS**

**CHANGE FROM**

JUNE 2010

	SOBRA WOMAN 133% FPL	SOBRA CHILD	ADULT W/O CHILD 100% FPL	FOSTER CARE	1931 36% FPL	FEDERAL EMERGENCY SERVICES	INFANTS	ADULT W/O CHILD 40% FPL	MEDICAL W/SPEND DOWN	SOBRA WOMAN 100% FPL	SOBRA CHILD 100% FPL	TRANSITIONAL MEDICAL T1 - T4	3E 1931 100% FPL	YATI	OTHER	TOTAL CASES
ARIZONA	548	3,896	4,049	963	9,557	(9,661)	(3,597)	12,829	(2,078)	240	8,389	(2,097)	5,848	(18)	2,295	31,163
REGION																
MARICOPA	399	2,856	2,243	789	5,841	(7,853)	(2,788)	6,531	(1,248)	223	5,311	(2,220)	3,235	(21)	1,274	14,572
NORTHERN	79	207	336	37	231	(380)	(339)	1,675	(227)	0	83	(412)	173	0	208	1,671
APACHE	7	21	82	(7)	67	(41)	(104)	487	3	22	(75)	(10)	(42)	(1)	44	453
COCONINO	7	138	13	9	(178)	(5)	(27)	41	(42)	(10)	(2)	(159)	99	4	51	(61)
MOHAVE	35	23	154	36	170	(241)	(118)	540	(127)	13	174	(154)	188	1	103	797
NAVAJO	30	25	87	(1)	172	(93)	(90)	607	(61)	(25)	(14)	(89)	(72)	(4)	10	482
CENTRAL	(6)	153	521	58	1,420	(751)	(16)	1,384	(443)	(14)	1,360	93	1,317	7	251	5,334
GILA	(27)	(30)	(12)	1	316	(27)	(51)	(45)	(40)	(13)	(12)	29	60	0	12	161
LA PAZ	(10)	42	(11)	2	65	(3)	0	(6)	(15)	(1)	(77)	6	(73)	0	15	(66)
PINAL	38	276	322	3	1,171	(116)	122	1,026	(196)	27	1,208	208	847	7	134	5,077
YAVAPAI	17	(117)	121	56	97	(259)	(79)	228	(100)	(1)	(41)	21	138	0	27	108
YUMA	(24)	(18)	101	(4)	(229)	(346)	(8)	181	(92)	(26)	282	(171)	345	0	63	54
SOUTHERN	76	680	949	79	2,065	(677)	(454)	3,239	(160)	31	1,635	442	1,123	(4)	562	9,586
COCHISE	16	89	182	(1)	(63)	(80)	(68)	249	(11)	37	265	(41)	127	3	61	765
GRAHAM	16	(31)	6	(1)	270	(30)	(13)	139	3	(12)	(41)	(20)	(23)	0	48	311
GREENLEE	(7)	(8)	(3)	0	(37)	(3)	1	60	4	1	7	(32)	(34)	(1)	(11)	(63)
PIMA	40	578	710	77	1,910	(436)	(347)	2,631	(139)	16	1,224	547	898	(5)	422	8,126
SANTA CRUZ	11	52	54	4	(15)	(128)	(27)	160	(17)	(11)	180	(12)	155	(1)	42	447

# CHART 7

## MEDICAL ASSISTANCE PROGRAM

### COMPARISON OF RECIPIENTS

FOR 1999, 2000, 2001, 2002, 2003, 2004, 2005, 2006, 2007, 2008, 2009, 2010, & 2011

Total Recipients

