



DEPARTMENT OF ECONOMIC SECURITY

Your Partner For A Stronger Arizona

State of Arizona

Department of Economic Security

Family Assistance Administration

Statistical Bulletin

July, 2011

Phone: (602) 542-3678

<https://www.azdes.gov/appreports.aspx>

**** STATISTICAL BULLETIN ****
ARIZONA DEPARTMENT OF ECONOMIC SECURITY
FAMILY ASSISTANCE ADMINISTRATION
BOX 6123, PHOENIX, ARIZONA 85005
PHONE (602) 542-3678

JULY 2011

THIS ISSUE OF THE STATISTICAL BULLETIN COMPARES JULY 2011 DATA FOR EACH OF THE INDICATED PROGRAMS WITH THE INFORMATION FOR JUNE 2011 AND JULY 2010. STATEWIDE SUMMARIES OF ACTIVITY WITHIN EACH OF THE SPECIFIC PROGRAMS FOR THIS REPORT PERIOD ARE DISCUSSED BELOW. THE TABLES COMPARE CURRENT AND PRIOR MONTH DATA. DISTRICT AND COUNTY COMPARISONS ARE PROVIDED WITHIN THIS BULLETIN

TANF SUMMARY

COMPARING TO JUNE 2011, JULY 2011 CASES INCREASED BY 108 (0.60%) TO 18,256. RECIPIENTS INCREASED BY 148 (0.36%) TO 41,284. PAYMENTS INCREASED BY \$5,578 (0.15%) TO \$3,823,764. AVERAGE PAYMENT PER CASE DECREASED BY \$0.94 (0.45%) TO \$0.00. PAYMENT PER RECIPIENT DECREASED BY \$0.20 (0.22%) TO \$92.62.

COMPARING TO JULY 2010, JULY 2011 CASES DECREASED BY 7,256 (28.44%). RECIPIENTS DECREASED BY 15,973 (27.90%). TOTAL PAYMENTS DECREASED BY \$1,665,210 (30.34%). THE AVERAGE PAYMENT PER CASE DECREASED BY \$5.70 (2.65%). THE AVERAGE PAYMENT PER RECIPIENT DECREASED BY \$3.25 (3.39%).

CASH ASSISTANCE (CA)

COMPARING TO JUNE 2011, JULY 2011 CASES INCREASED BY 97 (0.57%) TO 17,118. RECIPIENTS INCREASED BY 139 (0.37%) TO 38,096. PAYMENTS INCREASED BY \$12,288 (0.34%) TO \$3,645,108. AVERAGE PAYMENT PER CASE DECREASED BY \$0.49 (0.23%) TO \$212.94. PAYMENT PER RECIPIENT DECREASED BY \$0.03 (0.03%) TO \$95.68.

COMPARING TO JULY 2010, JULY 2011 CASES DECREASED BY 7,061 (29.20%). RECIPIENTS DECREASED BY 15,280 (28.63%). TOTAL PAYMENTS DECREASED BY \$1,606,408 (30.59%). THE AVERAGE PAYMENT PER CASE DECREASED BY \$4.25 (1.96%). THE AVERAGE PAYMENT PER RECIPIENT DECREASED BY \$2.71 (2.75%).

CASH ASSISTANCE UNEMPLOYED PARENT PROGRAM (CA-UP)

COMPARING TO JUNE 2011, JULY 2011 CASES DECREASED BY 44 (9.13%) TO 438. RECIPIENTS DECREASED BY 144 (7.88%) TO 1,683. PAYMENTS DECREASED BY \$10,084 (7.26%) TO \$128,821. AVERAGE PAYMENT PER CASE INCREASED BY \$5.93 (2.06%) TO \$294.11. PAYMENT PER RECIPIENT INCREASED BY \$0.51 (0.67%) TO \$76.54.

COMPARING TO JULY 2010, JULY 2011 CASES DECREASED BY 247 (36.06%). RECIPIENTS DECREASED BY 808 (32.44%). TOTAL PAYMENTS DECREASED BY \$62,865 (32.80%). THE AVERAGE PAYMENT PER CASE INCREASED BY \$14.28 (5.10%). THE AVERAGE PAYMENT PER RECIPIENT DECREASED BY \$0.41 (0.53%).

CASH ASSISTANCE WITH GRANT UNDER \$100 (CA-MOE)

COMPARING TO JUNE 2011, JULY 2011 CASES INCREASED BY 54 (8.46%) TO 692. RECIPIENTS INCREASED BY 148 (11.14%) TO 1,477. PAYMENTS INCREASED BY \$3,370 (7.33%) TO \$49,325. AVERAGE PAYMENT PER CASE DECREASED BY \$0.75 (1.04%) TO \$71.28. AVERAGE PAYMENT PER RECIPIENT DECREASED BY \$1.18 (3.41%) TO \$33.40.

COMPARING TO JULY 2010, JULY 2011 CASES INCREASED BY 69 (11.08%). RECIPIENTS INCREASED BY 165 (12.58%). TOTAL PAYMENTS INCREASED BY \$4,864 (10.94%). THE AVERAGE PAYMENT PER CASE DECREASED BY \$0.09 (0.13%). THE AVERAGE PAYMENT PER RECIPIENT DECREASED BY \$0.49 (1.45%).

CASH ASSISTANCE UNEMPLOYED PARENT PROGRAM WITH GRANT UNDER \$100 (CA-UP-MOE) NEW PROGRAM STARTING 7/01

COMPARING TO JUNE 2011, JULY 2011 CASES INCREASED BY 1 (14.29%) TO 8. RECIPIENTS INCREASED BY 5 (21.74%) TO 28. PAYMENTS INCREASED BY \$4 (0.79%) TO \$510. AVERAGE PAYMENT PER CASE DECREASED BY \$8.54 (11.81%) TO \$63.75. PAYMENT PER RECIPIENT DECREASED BY \$3.79 (17.23%) TO \$18.21.

COMPARING TO JULY 2010, JULY 2011 CASES DECREASED BY 17 (68.00%). RECIPIENTS DECREASED BY 50 (9.88%). TOTAL PAYMENTS DECREASED BY \$801 (61.10%). THE AVERAGE PAYMENT PER CASE INCREASED BY \$11.31 (21.57%). THE AVERAGE PAYMENT PER RECIPIENT INCREASED BY \$1.40 (8.33%).

TUBERCULOSIS CONTROL PROGRAM (TC)

COMPARING TO MAY 2011, JUNE 2011 CASES INCREASED BY 1 (20.00%) TO 6. RECIPIENTS INCREASED BY 1 (20.00%) TO 6. PAYMENTS INCREASED BY \$108 (16.12%) TO \$778. AVERAGE PAYMENT PER CASE INCREASED BY \$76.39 (57.01%) TO \$210.39. AVERAGE PAYMENT PER RECIPIENT DECREASED BY \$4.33 (3.23%) TO \$129.67.

COMPARING TO JUNE 2010, JUNE 2011 CASES INCREASED BY 5 (500.00%). RECIPIENTS INCREASED BY 5 (500.00%). TOTAL PAYMENTS INCREASED BY \$605 (349.71%). THE AVERAGE PAYMENT PER CASE INCREASED BY \$37.39 (21.61%). THE AVERAGE PAYMENT PER RECIPIENT DECREASED BY \$43.33 (25.05%).

SUPPLEMENTAL NUTRITION ASSISTANCE PROGRAM (SNAP)

COMPARING TO JUNE 2011, JULY 2011 SUPPLEMENTAL NUTRITION ASSISTANCE HOUSEHOLDS INCREASED BY 7,167 (1.52%) TO 477,227. PERSONS RECEIVING SUPPLEMENTAL NUTRITION ASSISTANCE INCREASED BY 19,122 (1.76%) TO 1,102,573. TOTAL COUPON ISSUANCE INCREASED BY \$2,916,935 (2.13%) TO \$139,710,246. THE AVERAGE HOUSEHOLD ALLOTMENT INCREASED BY \$1.74 (0.60%) TO \$292.75. THE AVERAGE ALLOTMENT PER PERSON INCREASED BY \$0.45 (0.36%) TO \$126.71.

COMPARING TO JULY 2010, JULY 2011 SUPPLEMENTAL NUTRITION ASSISTANCE HOUSEHOLDS INCREASED BY 22,869 (5.03%). PERSONS RECEIVING SUPPLEMENTAL NUTRITION ASSISTANCE INCREASED BY 57,633 (5.52%). TOTAL COUPON ISSUANCE INCREASED BY \$6,121,949 (4.58%). THE AVERAGE ALLOTMENT PER HOUSEHOLD DECREASED BY \$1.27 (0.43%). THE AVERAGE ALLOTMENT PER PERSON DECREASED BY \$1.13 (0.89%).

MEDICAL ASSISTANCE PROGRAM (MA) NEW TABLE INCLUDES PROP. 204 CATEGORIES

COMPARING TO JANUARY 2010, FEBRUARY 2010 TOTAL RECIPIENTS TOTAL RECIPIENTS DECREASED BY 6,946 (0.59%). SOBRA WOMEN AT 140% FPL DECREASED BY 248 (2.41%). SOBRA CHILDREN DECREASED BY 812 (1.23%). ADULTS W/O CHILD AT 100% INCREASED BY 446 (0.76%). FOSTER CARE INCREASED BY 69 (0.59%). 1931 AT 36% FPL DECREASED BY 4,919 (1.48%). EMERGENCY SERVICES DECREASED BY 5,083 (6.43%). INFANTS DECREASED BY 513 (1.02%). ADULT W/O CHILD AT 140% INCREASED BY 510 (0.33%). MEDICAL W/SPEND DOWN DECREASED BY 201 (3.10%). SOBRA WOMAN AT 100% INCREASED BY 99 (2.63%). SOBRA CHILD AT 100% INCREASED BY 902 (0.40%). TRANSITIONAL MEDICAL INCREASED BY 1,305 (3.04%). 1931 AT 100% INCREASED BY 1,355 (1.16%). YATI INCREASED BY 10 (3.02%). ALL OTHER CATEGORIES INCREASED BY 134 (0.51%).

COMPARING TO JULY 2010, JULY 2011 TOTAL RECIPIENTS TOTAL RECIPIENTS INCREASED BY 42,143 (3.53%). SOBRA WOMEN AT 140% FPL INCREASED BY 777 (7.39%). SOBRA CHILDREN INCREASED BY 2,490 (3.68%). ADULTS W/O CHILD AT 100% INCREASED BY 2,695 (4.40%). FOSTER CARE INCREASED BY 1,165 (9.70%). 1931 AT 36% FPL INCREASED BY 19,365 (5.76%). EMERGENCY SERVICES DECREASED BY 5,379 (9.20%). INFANTS DECREASED BY 2,791 (5.75%). ADULT W/O CHILD AT 140% INCREASED BY 9,213 (5.54%). MEDICAL W/SPEND DOWN DECREASED BY 3,802 (51.94%). SOBRA WOMAN AT 100% INCREASED BY 265 (6.77%). SOBRA CHILD AT 100% INCREASED BY 10,679 (4.69%). TRANSITIONAL MEDICAL DECREASED BY 1,234 (2.82%). 1931 AT 100% INCREASED BY 6,375 (5.27%). YATI INCREASED BY 7 (2.10%). ALL OTHER CATEGORIES INCREASED BY 2,318 (8.43%).

TANF SUMMARY

TABLES 1, 1A, 1B, & 1C: ARIZONA 1/

	JULY 2011							JUNE 2011			CHANGE FROM JULY 2010		
	FAMILIES (CASES)	PERSONS (RECIP.)	ADULTS	CHILDREN	TOTAL PAYMENTS	AVERAGE PAYMENT/ CASE	AVERAGE PAYMENT/ RECIP.	FAMILIES (CASES)	PERSONS (RECIP.)	TOTAL PAYMENTS	FAMILIES (CASES)	PERSONS (RECIP.)	TOTAL PAYMENTS
	ARIZONA	18,256	41,284	10,905	30,379	3,823,764	209.45	92.62	108	148	5,578	(7,256)	(15,973)
REGION													
MARICOPA	11,255	26,015	6,726	19,289	2,364,163	210.05	90.88	92	98	6,357	(4,257)	(9,364)	(943,031)
NORTHERN	1,025	2,311	636	1,675	209,289	204.18	90.56	(22)	(51)	(4,525)	(1,277)	(3,250)	(348,974)
APACHE	40	90	33	57	7,960	199.00	88.44	(1)	(2)	(493)	(44)	(104)	(12,520)
COCONINO	60	146	31	115	12,776	212.93	87.51	(2)	(9)	(1,311)	(57)	(103)	(11,412)
MOHAVE	611	1,334	358	976	125,148	204.82	93.81	(18)	(35)	(1,956)	(199)	(343)	(42,968)
NAVAJO	314	741	214	527	63,405	201.93	85.57	(1)	(5)	(765)	(977)	(2,700)	(282,074)
CENTRAL	2,024	4,368	1,173	3,195	422,085	208.54	96.63	56	151	10,043	(867)	(1,862)	(195,191)
GILA	432	912	326	586	103,351	239.24	113.32	22	42	4,302	(177)	(406)	(46,476)
LA PAZ	70	147	39	108	13,626	194.66	92.69	4	9	560	(45)	(107)	(8,700)
PINAL	811	1,748	434	1,314	159,472	196.64	91.23	2	24	(1,294)	(344)	(767)	(76,392)
YAVAPAI	267	517	109	408	51,367	192.39	99.36	(1)	(12)	489	(137)	(260)	(28,748)
YUMA	444	1,044	265	779	94,269	212.32	90.30	29	88	5,986	(164)	(322)	(34,875)
SOUTHERN	3,952	8,590	2,370	6,220	828,227	209.57	96.42	(18)	(50)	(6,297)	(855)	(1,497)	(178,014)
COCHISE	338	661	144	517	68,376	202.30	103.44	3	0	(517)	(95)	(190)	(20,861)
GRAHAM	226	467	155	312	52,693	233.15	112.83	(2)	2	491	13	61	4,256
GREENLEE	12	29	8	21	2,997	249.75	103.34	(4)	(10)	(557)	(12)	(24)	(2,383)
P MA	3,282	7,234	2,022	5,212	685,217	208.78	94.72	(13)	(36)	(5,001)	(722)	(1,272)	(151,832)
SANTA CRUZ	94	199	41	158	18,944	201.53	95.20	(2)	(6)	(713)	(39)	(72)	(7,194)

1/EXCLUDES: PRIOR MONTH NET TOTALS OF 1,083 CASES; 2,753 RECIPIENTS; \$190,446.
 GRANT DIVERSION TOTALS OF: 2,729 CASES; \$2,108,186.
 ZERO PAY TOTALS OF 5,108 CASES; 14,937 RECIPIENTS.
 RRP: 180 CASES; 256 RECIPIENTS; \$34,592.

1/INCLUDES: TANF CHILD ONLY: 7,817 CASES; 13,399 RECIPIENTS; \$1,470,881.

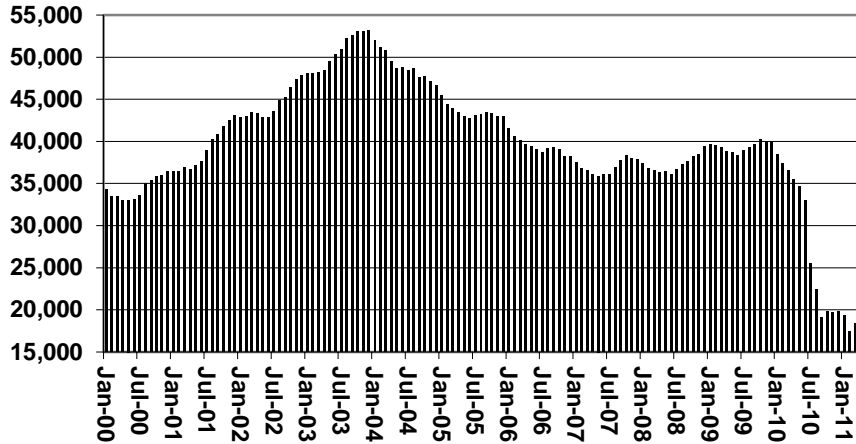
	CURRENT MO. CASES	CURRENT MO. RECIP.	CURRENT MO. DOLLARS	PRIOR MO. CASES	PRIOR MO. RECIP.	PRIOR MO. DOLLARS
PASQUAYAOUI	265	766	\$82,359	19	65	\$7,101
WM APACHE	0	0	\$0	0	0	\$0
SALT RIVER	84	281	\$27,013	14	44	\$2,612
SAN CARLOS	469	993	\$115,720	43	103	\$7,686
HOPAI	102	284	\$23,007	7	19	\$584
TOTAL	920	2,324	\$248,099	83	231	\$17,983

TANF SUMMARY

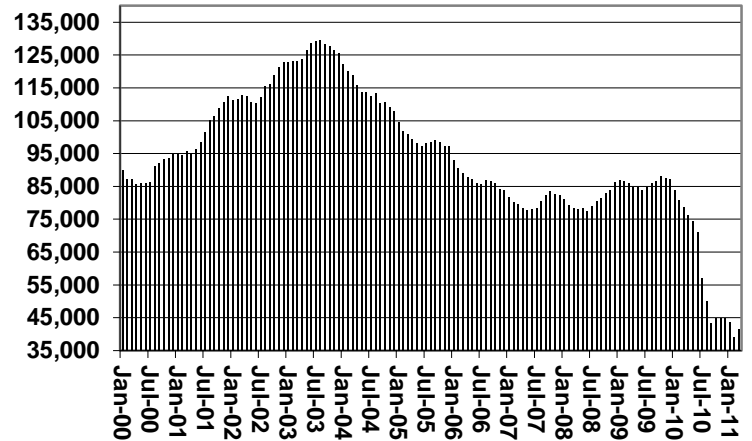
TABLES 1, 1A, 1B, & 1C

COMPARISON OF CASES, RECIPIENTS, PAYMENTS & AVERAGE PAYMENTS
FOR 2000, 2001, 2002, 2003, 2004, 2005, 2006, 2007, 2008, 2009, 2010, & 2011

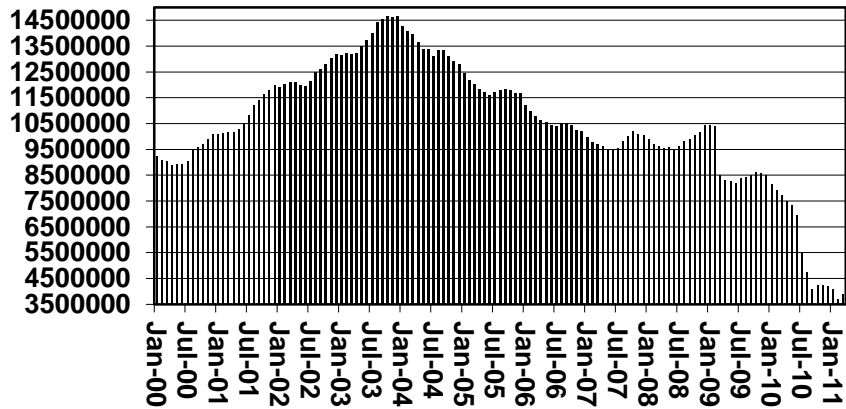
Cases



Recipients



Payments



Average Payments Per Recipient

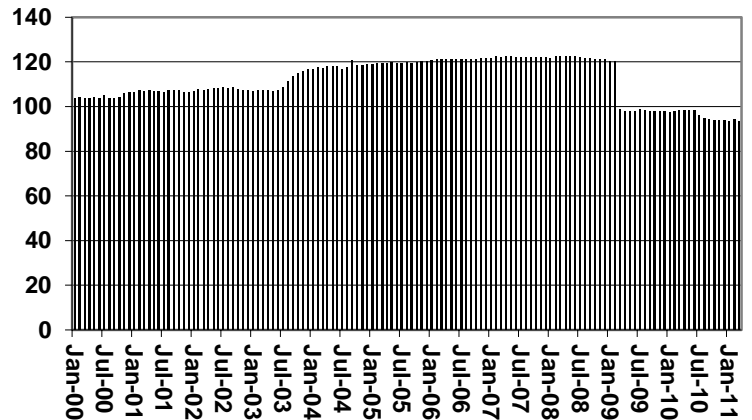
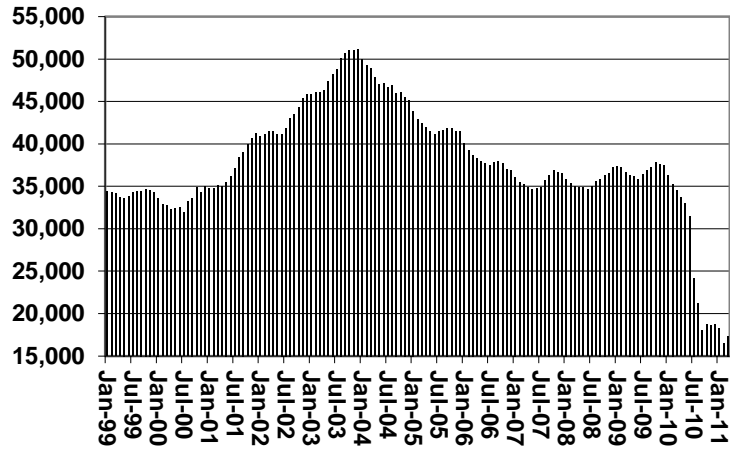


CHART 1

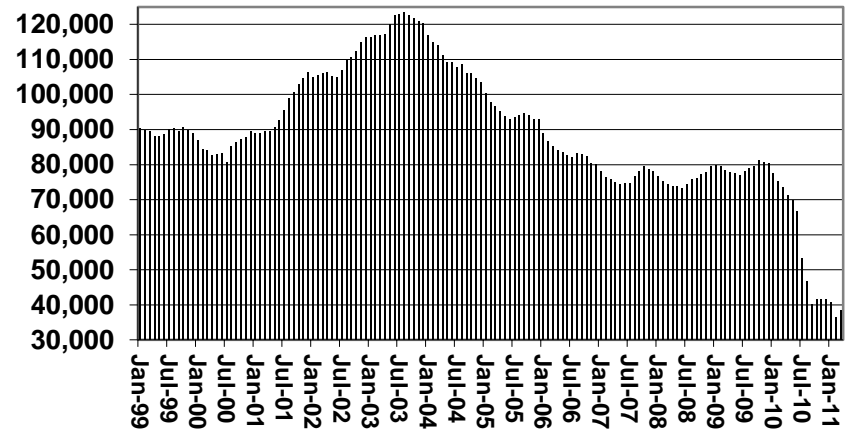
CASH ASSISTANCE PROGRAM

COMPARISON OF CASES, RECIPIENTS, PAYMENTS & AVERAGE PAYMENTS FOR 1999, 2000, 2001, 2002, 2003, 2004, 2005, 2006, 2007, 2008, 2009, 2010, & 2011

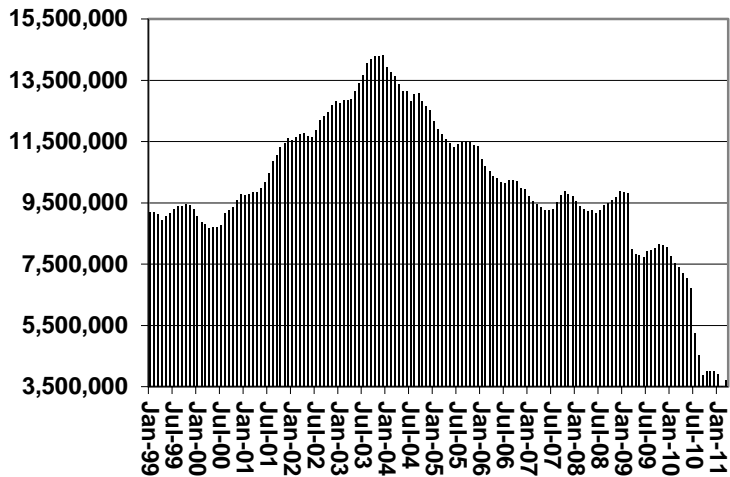
Cases



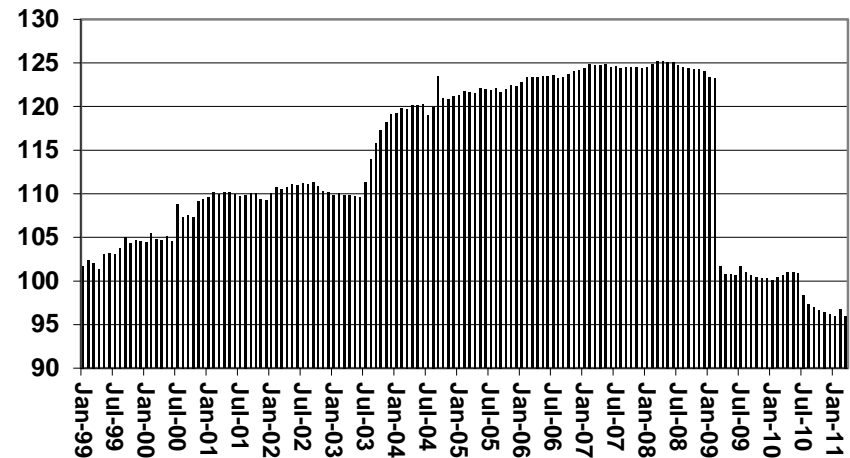
Recipients



Payments



Average Payment Per Recipient



**TABLE 1A
CA-UP**

CASH ASSISTANCE UNEMPLOYED PARENT PROGRAM: ARIZONA 1/

	JULY 2011							CHANGE FROM			JUNE 2011			JULY 2010		
	FAMILIES (CASES)	PERSONS (RECIP.)	ADULTS	CHILDREN	TOTAL PAYMENTS	AVERAGE PAYMENT/ CASE	AVERAGE PAYMENT/ RECIP.	FAMILIES (CASES)	PERSONS (RECIP.)	TOTAL PAYMENTS	FAMILIES (CASES)	PERSONS (RECIP.)	TOTAL PAYMENTS	FAMILIES (CASES)	PERSONS (RECIP.)	TOTAL PAYMENTS
ARIZONA	438	1,683	743	940	128,821	294.11	76.54	(44)	(144)	(10,084)	(247)	(808)	(62,865)			
REGION																
MARICOPA	247	951	396	555	73,239	296.51	77.01	(40)	(155)	(10,868)	(240)	(792)	(63,513)			
NORTHERN	36	146	67	79	11,363	315.64	77.83	0	5	505	18	86	6,543			
APACHE	4	18	8	10	1,395	348.75	77.50	(1)	(3)	(191)	4	18	1,395			
COCONINO	1	3	2	1	347	347.00	115.67	0	0	0	1	3	347			
MOHAVE	25	103	47	56	8,079	323.16	78.44	2	14	1,013	11	56	4,059			
NAVAJO	6	22	10	12	1,542	257.00	70.09	(1)	(6)	(317)	2	9	742			
CENTRAL	39	153	68	85	11,279	289.21	73.72	(3)	4	70	(17)	(64)	(4,635)			
GILA	0	0	0	0	0	0.00	0.00	0	0	0	(4)	(15)	(1,220)			
LA PAZ	0	0	0	0	0	0.00	0.00	(1)	(4)	(335)	(2)	(8)	(670)			
PINAL	20	80	36	44	5,592	279.60	69.90	(2)	8	405	(11)	(41)	(2,745)			
YAVAPAI	9	30	12	18	2,242	249.11	74.73	0	(3)	(236)	3	5	321			
YUMA	10	43	20	23	3,445	344.50	80.12	3	13	1,171	(4)	(7)	(511)			
SOUTHERN	116	433	212	221	32,940	283.97	76.07	(4)	(8)	(726)	(7)	(36)	(1,070)			
COCHISE	3	8	5	3	776	258.67	97.00	1	3	278	(3)	(12)	(761)			
GRAHAM	2	8	4	4	670	0.00	0.00	0	1	58	1	4	459			
GREENLEE	0	0	0	0	0	0.00	0.00	0	0	0	0	0	0			
PIMA	111	417	203	214	31,494	283.73	75.53	(3)	(8)	(723)	(5)	(28)	(768)			
SANTA CRUZ	0	0	0	0	0	0.00	0.00	(2)	(4)	(339)	0	0	0			
1/EXCLUDES: PRIOR MONTH NET TOTALS OF: 47 CASES; 198 REC P ENTS; \$14,350.																
GRANT DIVERSION TOTALS OF: 0 CASES; \$0.																
ZERO PAY TOTALS OF 8 CASES; 29 REC P ENTS.																
PASQUAYQUI																
WM APACHE																
SALT RIVER																
SAN CARLOS																
HOPI																
TOTAL																
CURRENT MO. CASES																
CURRENT MO. RECIP.																
CURRENT MO. DOLLARS																
PRIOR MO. CASES																
PRIOR MO. RECIP																
PRIOR MO. DOLLARS																
CASES																
RECIP																
DOLLARS																
CASES																
RECIP																
DOLLARS																

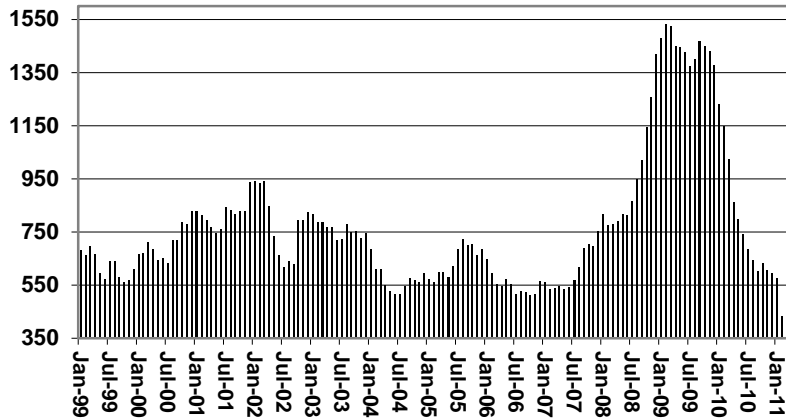
CASES WITH GRANT UNDER \$100 (SEE TABLE 1C).

CHART 1A

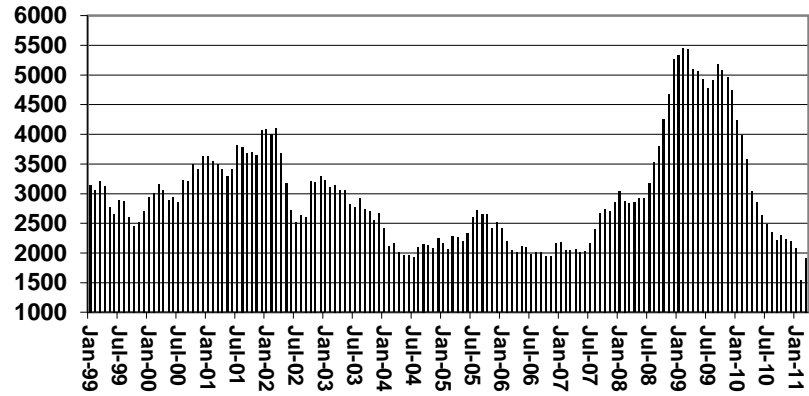
CASH ASSISTANCE UNEMPLOYED PARENT PROGRAM

COMPARISON OF CASES, RECIPIENTS, PAYMENTS & AVERAGE PAYMENTS FOR 1999, 2000, 2001, 2002, 2003, 2004, 2005, 2006, 2007, 2008, 2009, 2010, & 2011

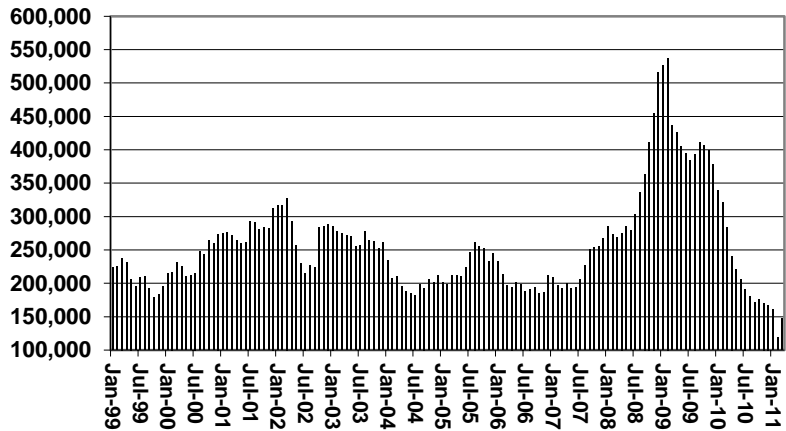
Cases



Recipients



Payments



Average Payment Per Recipient

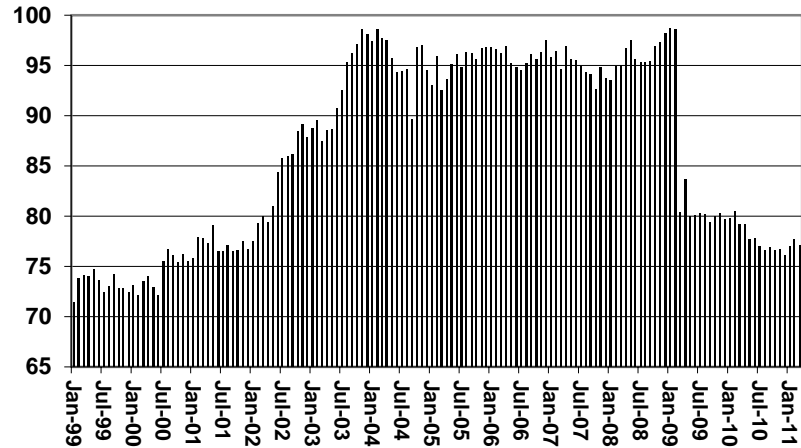


TABLE 1B 1/

CASH ASSISTANCE: ARIZONA
 CASES WITH GRANT UNDER \$100

	JULY 2011							CHANGE FROM			JUNE 2011			JULY 2010		
	FAMILIES (CASES)	PERSONS (RECIP.)	ADULTS	CHILDREN	TOTAL PAYMENTS	AVERAGE PAYMENT/ CASE	AVERAGE PAYMENT/ RECIP.	FAMILIES (CASES)	PERSONS (RECIP.)	TOTAL PAYMENTS	FAMILIES (CASES)	PERSONS (RECIP.)	TOTAL PAYMENTS			
ARIZONA	692	1,477	384	1,093	49,325	71.28	33.40	54	148	3,370	69	165	4,864			
REGION																
MARICOPA	442	933	231	702	31,173	70.53	33.41	51	118	2,492	31	25	2,369			
NORTHERN	45	98	30	68	3,433	76.29	35.03	(2)	10	514	12	32	1,139			
APACHE	2	3	1	2	202	101.00	67.33	2	3	184	0	(1)	56			
COCONINO	6	14	4	10	312	52.00	22.29	4	10	226	5	12	222			
MOHAVE	21	40	13	27	1,586	75.52	39.65	(12)	(19)	(436)	(3)	(7)	(60)			
NAVAJO	16	41	12	29	1,333	83.31	32.51	4	16	540	10	28	921			
CENTRAL	60	122	37	85	4,070	67.83	33.36	3	(7)	(28)	(5)	0	(1,117)			
GILA	3	5	1	4	233	77.67	46.60	1	1	81	(3)	(7)	(48)			
LA PAZ	6	9	4	5	365	60.83	40.56	3	3	93	(2)	(4)	(152)			
PINAL	28	61	19	42	1,933	69.04	31.69	2	1	23	6	23	(14)			
YAVAPAI	11	20	5	15	728	66.18	36.40	(3)	(9)	(184)	(5)	(12)	(437)			
YUMA	12	27	8	19	811	67.58	30.04	0	(3)	(41)	(1)	0	(466)			
SOUTHERN	145	324	86	238	10,649	73.44	32.87	2	27	392	31	108	2,473			
COCHISE	13	21	2	19	1,137	87.46	54.14	4	6	422	1	2	261			
GRAHAM	1	1	1	0	89	89.00	89.00	0	(1)	(15)	(3)	(6)	(108)			
GREENLEE	0	0	0	0	0	0.00	0.00	0	0	0	0	0	0			
PIMA	128	294	81	213	9,195	71.84	31.28	(3)	22	(77)	37	115	2,603			
SANTA CRUZ	3	8	2	6	228	76.00	28.50	1	0	62	(4)	(3)	(283)			

EXCLUDES: PRIOR MONTH NET TOTALS OF 0 CASES; 0 RECIPIENTS;

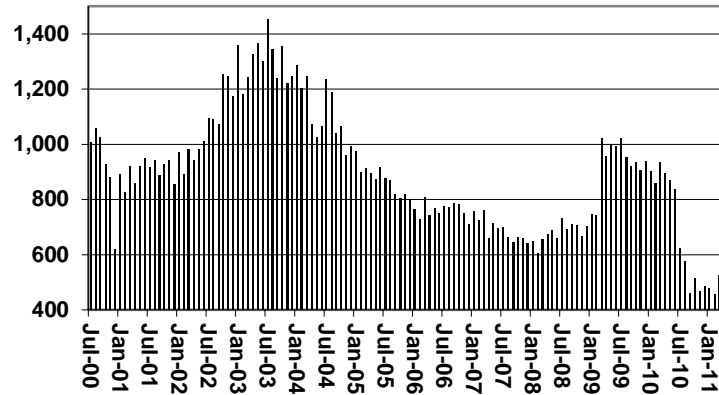
22

CHART 1B

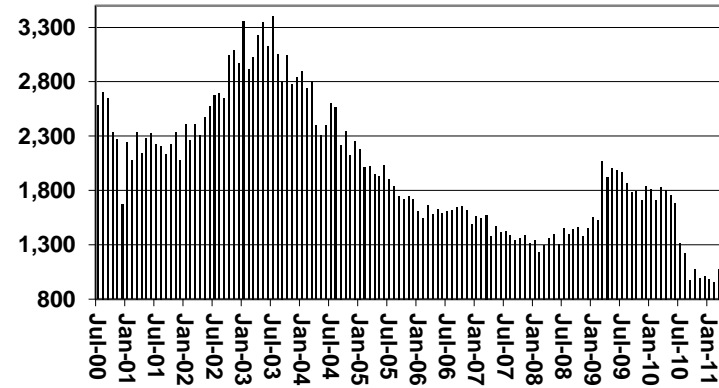
CASH ASSISTANCE PROGRAM CASES WITH GRANT UNDER \$100

FOR 1999, 2000, 2001, 2002, 2003, 2004, 2005, 2006, 2007, 2008, 2009, 2010, & 2011

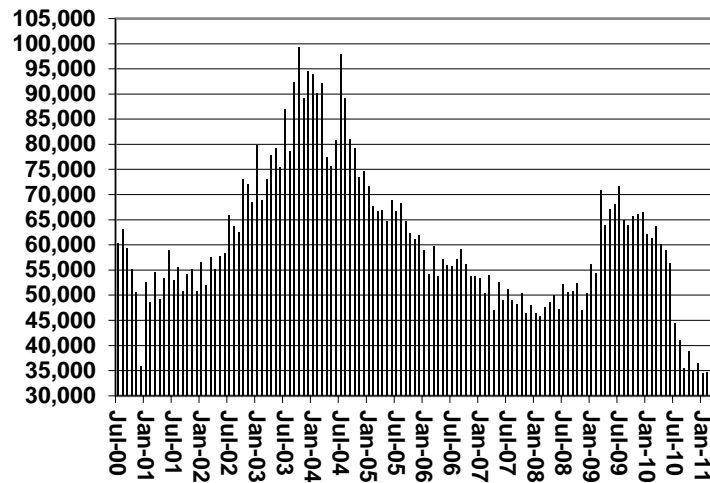
Cases



Recipients



Payments



Average Payment Per Recipient

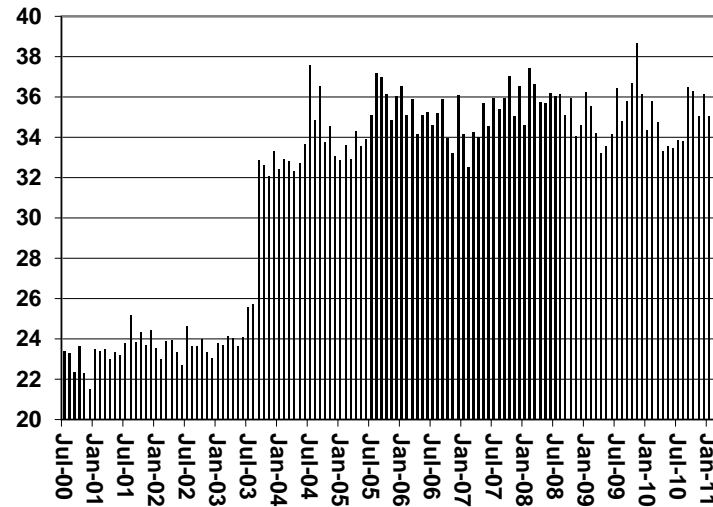


TABLE 1C 1/

CASH ASSISTANCE UNEMPLOYED PARENT PROGRAM: ARIZONA
 CASES WITH GRANT UNDER \$100

	JULY 2011								CHANGE FROM			JUNE 2011			JULY 2010		
	FAMILIES	PERSONS	ADULTS	CHILDREN	TOTAL	AVERAGE	AVERAGE		FAMILIES	PERSONS	TOTAL	FAMILIES	PERSONS	TOTAL	FAMILIES	PERSONS	TOTAL
	(CASES)	(RECIP.)			PAYMENTS	PAYMENT/ CASE	PAYMENT/ RECIP.		(CASES)	(RECIP.)	PAYMENTS	(CASES)	(RECIP.)	PAYMENTS	(CASES)	(RECIP.)	PAYMENTS
ARIZONA	8	28	13	15	510	63.75	18.21		1	5	4	(17)	(50)	(801)			
REGION																	
MARICOPA	3	8	4	4	170	56.67	21.25		(1)	(2)	(60)	(17)	(51)	(900)			
NORTHERN	0	0	0	0	0	0.00	0.00		0	0	0	0	0	0			
APACHE	0	0	0	0	0	0.00	0.00		0	0	0	0	0	0			
COCONINO	0	0	0	0	0	0.00	0.00		0	0	0	0	0	0			
MOHAVE	0	0	0	0	0	0.00	0.00		0	0	0	0	0	0			
NAVAJO	0	0	0	0	0	0.00	0.00		0	0	0	0	0	0			
CENTRAL	1	5	2	3	16	16.00	3.20		0	0	(80)	(2)	(8)	(93)			
GILA	0	0	0	0	0	0.00	0.00		0	0	0	0	0	0			
LA PAZ	0	0	0	0	0	0.00	0.00		0	0	0	0	0	0			
PINAL	1	5	2	3	16	16.00	3.20		0	0	(80)	(1)	(3)	(56)			
YAVAPAI	0	0	0	0	0	0.00	0.00		0	0	0	0	0	0			
YUMA	0	0	0	0	0	0.00	0.00		0	0	0	(1)	(5)	(37)			
SOUTHERN	4	15	7	8	324	81.00	21.60		2	7	144	2	9	192			
COCHISE	0	0	0	0	0	0.00	0.00		0	0	0	0	0	0			
GRAHAM	0	0	0	0	0	0.00	0.00		0	0	0	0	0	0			
GREENLEE	0	0	0	0	0	0.00	0.00		0	0	0	0	0	0			
PIMA	4	15	7	8	324	81.00	21.60		2	7	144	2	9	192			
SANTA CRUZ	0	0	0	0	0	0.00	0.00		0	0	0	0	0	0			

EXCLUDES: PRIOR MONTH NET TOTALS OF 22 CASES; 91 RECIPIENTS; \$1,017.

CHART 1C

CASH ASSISTANCE UNEMPLOYED PARENT PROGRAM

CASES WITH GRANT UNDER \$100

FOR 1999, 2000, 2001, 2002, 2003, 2004, 2005, 2006, 2007, 2008, 2009, 2010, & 2011

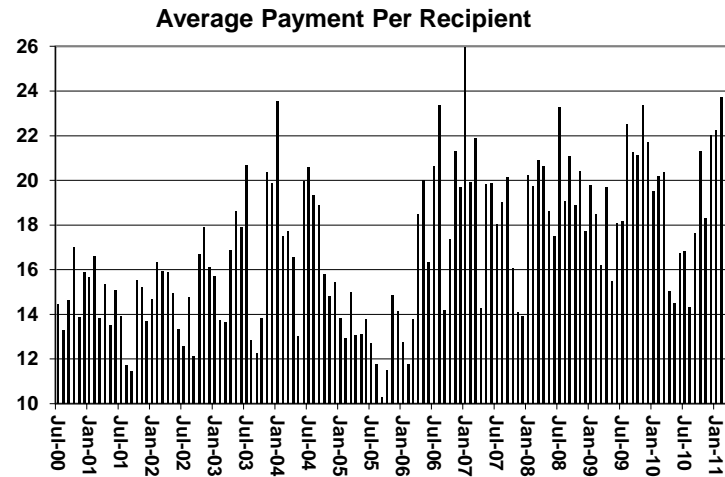
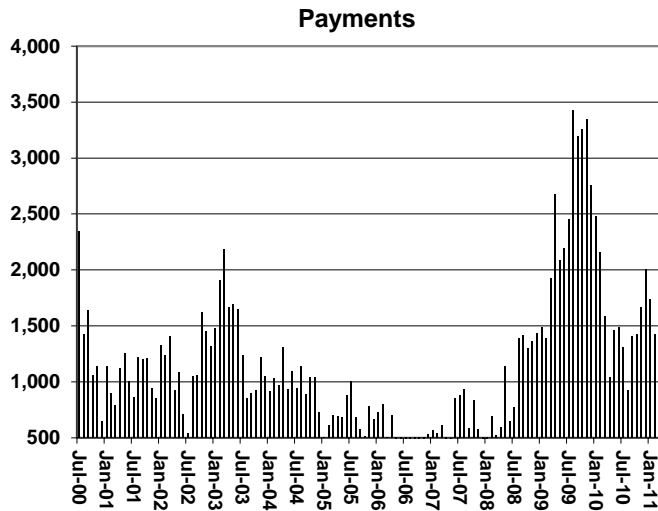
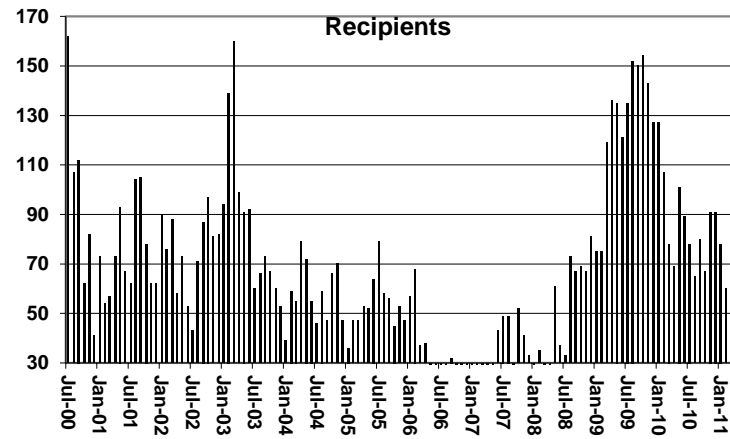
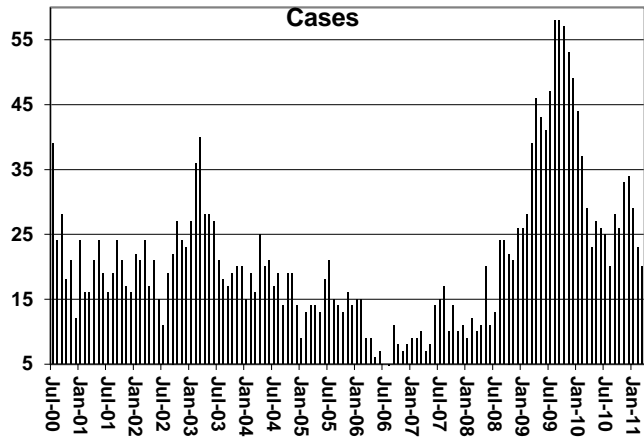


TABLE 4
TUBERCULOSIS CONTROL: ARIZONA 1/

	CHANGE FROM										
	JULY 2011			JUNE 2011			JULY 2010				
	NUMBER OF CASES	PERSONS (RECIP.)	TOTAL PAYMENTS	AVERAGE PAYMENT/ CASE	AVERAGE PAYMENT/ RECIP.	NUMBER OF CASES	PERSONS (RECIP.)	TOTAL PAYMENTS	NUMBER OF CASES	PERSONS (RECIP.)	TOTAL PAYMENTS
ARIZONA	5	5	735	147.00	147.00	(1)	(1)	(43)	4	4	562
REGION											
MARICOPA	5	5	735	147.00	147.00	(1)	(1)	(43)	4	4	562
NORTHERN	0	0	0	0.00	0.00	0	0	0	0	0	0
APACHE	0	0	0	0.00	0.00	0	0	0	0	0	0
COCONINO	0	0	0	0.00	0.00	0	0	0	0	0	0
MOHAVE	0	0	0	0.00	0.00	0	0	0	0	0	0
NAVAJO	0	0	0	0.00	0.00	0	0	0	0	0	0
CENTRAL	0	0	0	0.00	0.00	0	0	0	0	0	0
GILA	0	0	0	0.00	0.00	0	0	0	0	0	0
LA PAZ	0	0	0	0.00	0.00	0	0	0	0	0	0
PINAL	0	0	0	0.00	0.00	0	0	0	0	0	0
YAVAPAI	0	0	0	0.00	0.00	0	0	0	0	0	0
YUMA	0	0	0	0.00	0.00	0	0	0	0	0	0
SOUTHERN	0	0	0	0.00	0.00	0	0	0	0	0	0
COCHISE	0	0	0	0.00	0.00	0	0	0	0	0	0
GRAHAM	0	0	0	0.00	0.00	0	0	0	0	0	0
GREENLEE	0	0	0	0.00	0.00	0	0	0	0	0	0
PIMA	0	0	0	0.00	0.00	0	0	0	0	0	0
SANTA CRUZ	0	0	0	0.00	0.00	0	0	0	0	0	0

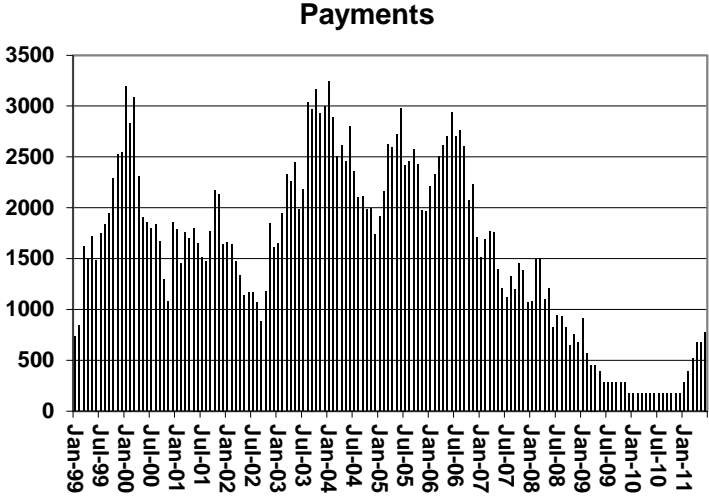
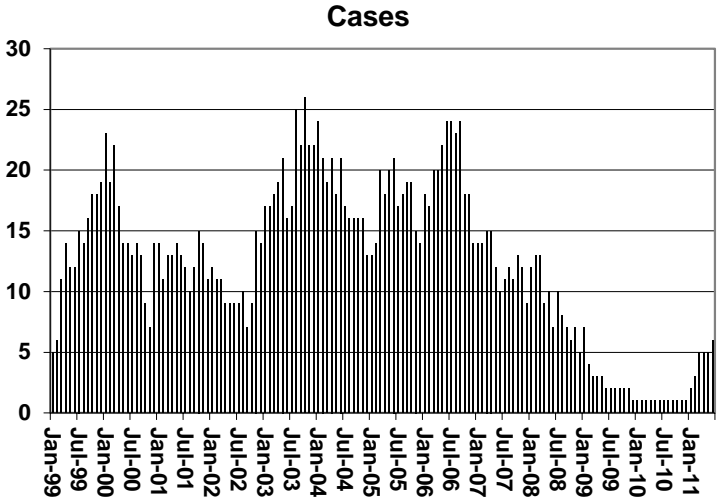
1/EXCLUDES: PRIOR MONTH NET TOTALS OF : 1 CASES; 1 RECIPIENTS; \$57.

CHART 4

TUBERCULOSIS CONTROL PROGRAM

COMPARISON OF CASES, PAYMENTS & AVERAGE PAYMENTS

FOR 1999, 2000, 2001, 2002, 2003, 2004, 2005, 2006, 2007, 2008, 2009, 2010, & 2011



Average Payment Per Case

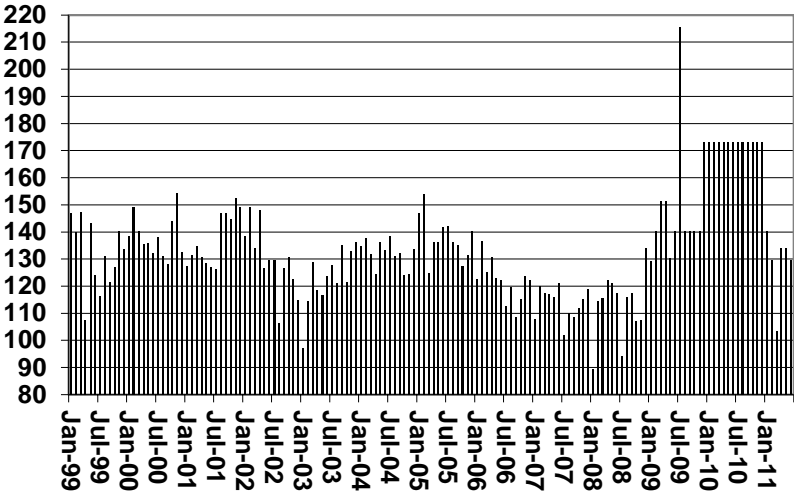


TABLE 6

SUPPLEMENTAL NUTRITION ASSISTANCE PROGRAM: ARIZONA 1/

CHANGE FROM

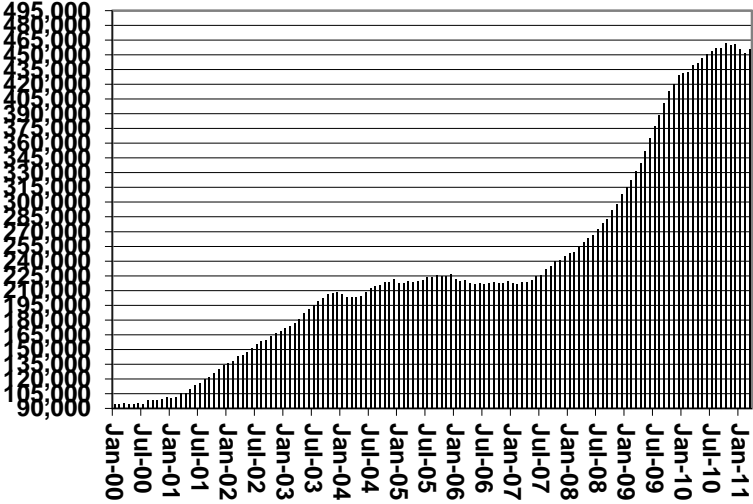
	JULY 2011							JUNE 2011			JULY 2010		
	HOUSEHOLDS	PERSONS	ADULTS	CHILDREN	TOTAL PAYMENTS ISSUANCE	AVERAGE PAYMT./ HOUSEHOLD	AVERAGE PAYMT./ PERSON	HOUSEHOLDS	PERSONS	TOTAL PAYMENTS ISSUANCE	HOUSEHOLDS	PERSONS	TOTAL PAYMENTS ISSUANCE
ARIZONA	477,227	1,102,573	568,882	533,691	139,710,246	292.75	126.71	7,167	19,122	2,916,935	22,869	57,633	6,121,949
REGION													
MARICOPA	255,575	595,008	287,225	307,783	76,151,142	297.96	127.98	4,118	10,572	1,692,357	7,714	24,915	2,979,147
NORTHERN	54,537	132,723	74,683	58,040	16,490,566	302.37	124.25	712	2,241	318,138	2,595	5,245	446,403
APACHE	10,355	28,460	15,532	12,928	3,534,184	341.30	124.18	170	562	107,114	589	798	87,560
COCONINO	9,699	24,143	12,855	11,288	2,947,533	303.90	122.09	80	338	35,869	146	375	(28,132)
MOHAVE	20,860	44,560	26,769	17,791	5,594,909	268.21	125.56	169	450	63,205	937	2,185	206,090
NAVAJO	13,623	35,560	19,527	16,033	4,413,940	324.01	124.13	293	891	111,950	923	1,887	180,885
CENTRAL	63,428	150,902	81,976	68,926	18,493,180	291.56	122.55	1,216	3,575	449,840	4,803	12,090	1,022,722
GILA	6,200	13,585	7,909	5,676	1,751,166	282.45	128.90	80	191	14,568	364	924	75,030
LA PAZ	2,008	4,141	2,397	1,744	529,186	263.54	127.79	(1)	15	5,225	86	157	13,186
PINAL	23,026	57,185	29,651	27,534	7,184,378	312.01	125.63	189	626	104,062	2,148	5,576	558,136
YAVAPAI	15,359	31,143	18,753	12,390	3,834,753	249.67	123.13	221	565	80,910	1,111	2,177	203,832
YUMA	16,835	44,848	23,266	21,582	5,193,697	308.51	115.81	727	2,178	245,075	1,094	3,256	172,538
SOUTHERN	103,687	223,940	124,998	98,942	28,575,358	275.59	127.60	1,121	2,734	456,600	7,757	15,383	1,673,677
COCHISE	10,925	23,618	13,546	10,072	2,890,569	264.58	122.39	131	319	28,217	890	1,774	163,357
GRAHAM	3,574	8,146	4,544	3,602	1,038,314	290.52	127.46	8	(50)	772	284	419	37,199
GREENLEE	505	1,083	630	453	143,323	283.81	132.34	2	(27)	672	(4)	(50)	534
PIMA	84,095	178,740	99,990	78,750	23,052,514	274.12	128.97	882	2,139	376,974	6,188	12,144	1,377,397
SANTA CRUZ	4,588	12,353	6,288	6,065	1,450,638	316.18	117.43	98	353	49,965	399	1,096	95,190

1/EXCLUDES: PRIOR MONTH NET TOTALS OF : 10,332 CASES; 25,155 RECIPIENTS; \$1,662,421.
 AGED CANCELLATIONS: 12,999 CASES; 15,799 RECIPIENTS; \$714,981.
 SNAP CONVERSIONS: 0 CASES; 0 RECIPIENTS; \$0.
 SNAP CHILD ONLY: 60,569 CASES; 143,369 RECIPIENTS; \$21,601,644.
 SNAP ZERO PAY: 6,158 CASES; 23,761 RECIPIENTS.

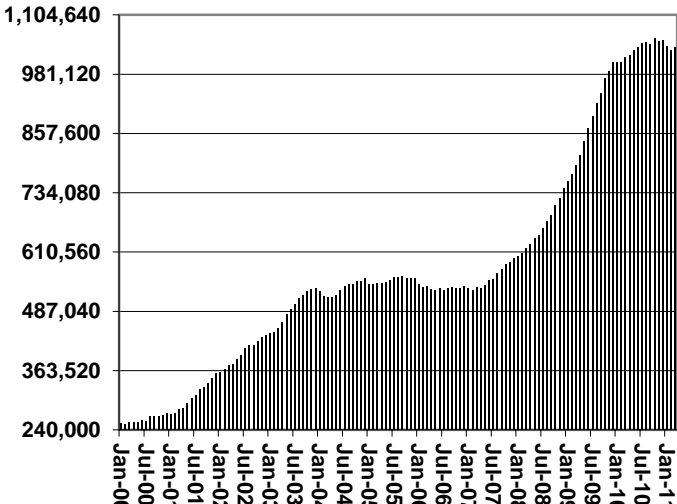
CHART 6

SUPPLEMENTAL NUTRITION ASSISTANCE PROGRAM (SNAP) COMPARISON OF HOUSEHOLDS, RECIPIENTS, PAYMENTS & AVERAGE PAYMENTS FOR 1999, 2000, 2001, 2002, 2003, 2004, 2005, 2006, 2007, 2008, 2009, 2010, & 2011

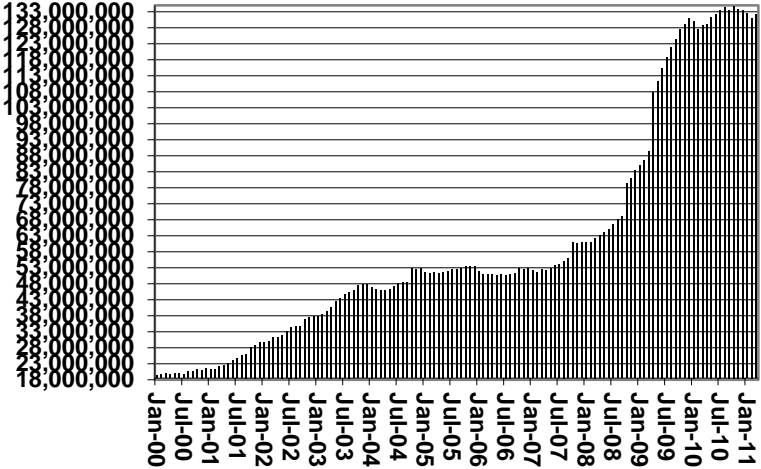
Households



Recipients



Payments



Average Payment Per Household

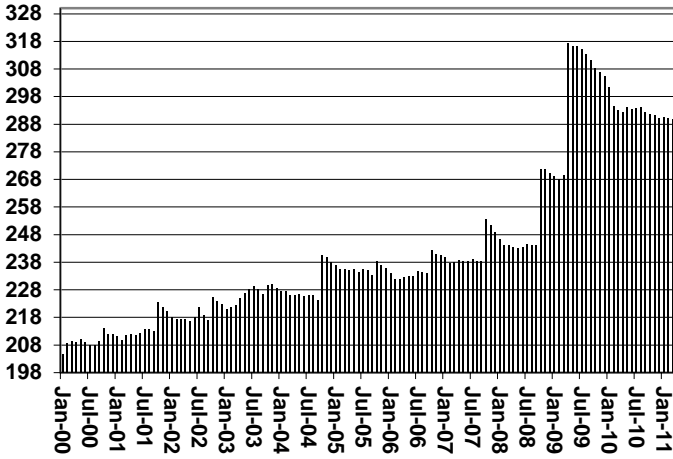


TABLE 7A
MEDICAL ASSISTANCE PROGRAM
RECIPIENTS
JULY 2011

	SOBRA WOMAN 133% FPL	SOBRA CHILD	ADULT W/O CHILD 100% FPL	FOSTER CARE	1931 36% FPL	FEDERAL EMERGENCY SERVICES	INFANTS	ADULT W/O CHILD 40% FPL	MEDICAL W/SPEND DOWN	SOBRA WOMAN 100% FPL	SOBRA CHILD 100% FPL	TRANSITIONAL MEDICAL T1 - T4	1931 100% FPL	YATI	OTHER	TOTAL CASES
ARIZONA	11,298	70,179	63,926	13,176	355,316	53,100	45,760	175,415	3,518	4,181	238,578	42,495	127,322	340	29,824	1,234,428
REGION																
MARICOPA	6,301	39,965	31,430	7,167	199,221	41,839	27,129	89,484	1,868	2,276	140,638	22,187	66,032	189	15,558	691,284
NORTHERN	1,277	7,646	7,595	685	45,028	993	4,668	26,018	557	539	23,630	4,824	15,065	14	3,103	141,642
APACHE	208	1,532	1,087	35	11,715	75	885	6,015	123	113	4,239	921	2,699	0	433	30,080
COCONINO	292	1,491	1,541	139	8,452	366	1,079	4,675	86	109	4,874	1,001	3,058	11	468	27,642
MOHAVE	449	2,243	3,121	363	11,808	356	1,438	8,097	250	196	8,714	1,716	5,418	2	1,619	45,790
NAVAJO	328	2,380	1,846	148	13,053	196	1,266	7,231	98	121	5,803	1,186	3,890	1	583	38,130
CENTRAL	1,661	9,359	9,774	1,550	45,688	3,732	5,990	22,431	429	580	30,629	6,525	19,525	38	4,494	162,405
GILA	95	649	760	100	4,815	102	480	2,615	56	35	1,904	456	1,334	3	348	13,752
LA PAZ	31	253	258	19	1,367	133	147	782	5	11	645	119	376	0	171	4,317
PINAL	561	4,103	2,934	620	19,395	1,184	2,302	8,874	113	209	11,174	2,221	6,508	15	1,367	61,580
YAVAPAI	413	1,710	2,756	510	7,884	1,053	1,153	5,177	137	117	6,271	1,683	4,136	17	1,242	34,259
YUMA	561	2,644	3,066	301	12,227	1,260	1,908	4,983	118	208	10,635	2,046	7,171	3	1,366	48,497
SOUTHERN	2,059	13,209	15,127	3,774	65,379	6,536	7,973	37,482	664	786	43,681	8,959	26,700	99	6,669	239,097
COCHISE	217	1,296	1,836	247	6,947	406	788	3,322	92	98	4,497	865	2,816	5	925	24,357
GRAHAM	115	473	480	72	2,844	21	357	1,502	35	24	1,399	351	895	1	182	8,751
GREENLEE	12	56	66	8	435	2	54	235	10	8	250	29	100	0	35	1,300
P MA	1,607	10,692	11,848	3,413	51,697	5,701	6,334	31,219	506	612	34,422	7,139	20,860	93	5,028	191,171
SANTA CRUZ	108	692	897	34	3,456	406	440	1,204	21	44	3,113	575	2,029	0	499	13,518

TABLE 7B
MEDICAL ASSISTANCE PROGRAM
RECIPIENTS

CHANGE FROM

JUNE 2011

	SOBRA WOMAN 133% FPL	SOBRA CHILD	ADULT W/O CHILD 100% FPL	FOSTER CARE	1931 36% FPL	FEDERAL EMERGENCY SERVICES	INFANTS	ADULT W/O CHILD 40% FPL	MEDICAL W/SPEND DOWN	SOBRA WOMAN 100% FPL	SOBRA CHILD 100% FPL	TRANSITIONAL MEDICAL T1 - T4	1931 100% FPL	YATI	OTHER	TOTAL CASES
ARIZONA	357	(1,167)	(1,062)	193	11,930	1,581	512	(722)	(1,639)	62	2,392	(162)	804	8	239	13,326
REGION																
MARICOPA	265	(704)	(579)	116	7,099	1,431	357	(504)	(907)	72	1,444	359	342	7	182	8,980
NORTHERN	25	(167)	(199)	13	1,281	(13)	40	(48)	(233)	(1)	80	82	54	(1)	20	933
APACHE	6	(62)	(41)	0	467	1	10	61	(34)	(1)	(69)	55	(42)	0	5	356
COCONINO	0	(40)	(42)	4	167	(12)	11	7	(36)	2	(2)	21	9	1	8	98
MOHAVE	26	(51)	(103)	8	204	0	16	(150)	(116)	(7)	117	29	15	(2)	(13)	(27)
NAVAJO	(7)	(14)	(13)	1	443	(2)	3	34	(47)	5	34	(23)	72	0	20	506
CENTRAL	(2)	(210)	(112)	23	1,759	15	57	29	(258)	13	507	(187)	335	2	32	2,003
GILA	(5)	(12)	(4)	(1)	98	1	(3)	42	(11)	0	(25)	10	(6)	2	(13)	73
LA PAZ	0	(26)	(5)	0	79	(1)	7	(20)	(3)	(1)	(9)	(47)	(1)	0	5	(22)
PINAL	(15)	(177)	(114)	23	635	10	33	(15)	(77)	10	95	(30)	48	(2)	24	448
YAVAPAI	3	(18)	(47)	0	322	(34)	(7)	(69)	(88)	2	80	13	35	3	(12)	183
YUMA	15	23	58	1	625	39	27	91	(79)	2	366	(133)	259	(1)	28	1,321
SOUTHERN	69	(86)	(172)	41	1,791	148	58	(199)	(241)	(22)	361	(416)	73	0	5	1,410
COCHISE	5	(45)	(15)	6	182	5	(1)	(52)	(37)	(9)	80	(63)	8	(1)	20	83
GRAHAM	(3)	5	(31)	(1)	(21)	2	(4)	18	(11)	0	(16)	(9)	1	0	(3)	(73)
GREENLEE	2	4	2	0	26	(1)	0	(5)	0	2	5	(11)	2	(1)	1	26
P MA	63	(56)	(124)	35	1,439	138	58	(166)	(185)	(23)	298	(274)	45	2	(8)	1,242
SANTA CRUZ	2	6	(4)	1	165	4	5	6	(8)	8	(6)	(59)	17	0	(5)	132

TABLE 7C
MEDICAL ASSISTANCE PROGRAM
RECIPIENTS

CHANGE FROM

JULY 2010

	SOBRA WOMAN 133% FPL	SOBRA CHILD	ADULT W/O CHILD 100% FPL	FOSTER CARE	1931 36% FPL	FEDERAL EMERGENCY SERVICES	INFANTS	ADULT W/O CHILD 40% FPL	MEDICAL W/SPEND DOWN	SOBRA WOMAN 100% FPL	SOBRA CHILD 100% FPL	TRANSITIONAL MEDICAL T1 - T4	3E 1931 100% FPL	YATI	OTHER	TOTAL CASES
ARIZONA	777	2,490	2,695	1,165	19,365	(5,379)	(2,791)	9,213	(3,802)	265	10,679	(1,234)	6,375	7	2,318	42,143
REGION																
MARICOPA	600	2,015	1,529	907	12,905	(4,159)	(2,146)	4,746	(2,192)	282	6,778	(1,616)	3,510	(5)	1,391	24,545
NORTHERN	101	54	179	54	592	(327)	(304)	1,094	(502)	(15)	316	(53)	262	(2)	176	1,625
APACHE	23	9	82	(5)	207	(33)	(95)	456	(29)	4	(81)	159	(66)	0	36	667
COCONINO	10	73	(41)	9	(127)	0	(26)	(22)	(99)	(10)	(61)	(64)	64	3	57	(234)
MOHAVE	51	(50)	55	52	224	(205)	(104)	171	(259)	12	375	(58)	213	(1)	59	535
NAVAJO	17	22	83	(2)	288	(89)	(79)	489	(115)	(21)	83	(90)	51	(4)	24	657
CENTRAL	(51)	(80)	335	69	2,660	(626)	(4)	998	(683)	1	1,779	211	1,541	7	205	6,362
GILA	(27)	(35)	(4)	(1)	334	(30)	(56)	(38)	(40)	(14)	4	85	71	2	5	256
LA PAZ	(15)	23	(19)	3	85	5	16	(58)	(20)	4	(78)	(49)	(53)	0	19	(137)
PINAL	5	65	170	31	1,465	(85)	138	854	(252)	44	1,272	300	848	4	141	5,000
YAVAPAI	17	(140)	50	42	575	(234)	(96)	128	(201)	7	14	28	174	3	(24)	343
YUMA	(31)	7	138	(6)	201	(282)	(6)	112	(170)	(40)	567	(153)	501	(2)	64	900
SOUTHERN	127	501	652	135	3,208	(267)	(337)	2,375	(425)	(3)	1,806	224	1,062	7	546	9,611
COCHISE	1	31	156	3	129	(50)	(63)	144	(57)	24	292	(132)	99	1	78	656
GRAHAM	6	(33)	(39)	(1)	147	(29)	5	133	(17)	(7)	(15)	(12)	14	(1)	38	189
GREENLEE	(4)	(3)	(2)	0	2	(4)	(4)	50	1	3	2	(36)	(38)	(2)	(7)	(42)
P MA	111	457	509	128	2,852	(67)	(258)	1,906	(327)	(13)	1,410	405	865	10	403	8,391
SANTA CRUZ	13	49	28	5	78	(117)	(17)	142	(25)	(10)	117	(1)	122	(1)	34	417

CHART 7

MEDICAL ASSISTANCE PROGRAM

COMPARISON OF RECIPIENTS

FOR 1999, 2000, 2001, 2002, 2003, 2004, 2005, 2006, 2007, 2008, 2009, 2010, & 2011

Total Recipients

