



DEPARTMENT OF ECONOMIC SECURITY

Your Partner For A Stronger Arizona

State of Arizona

Department of Economic Security

Family Assistance Administration

Statistical Bulletin

August, 2011

Phone: (602) 542-3678

<https://www.azdes.gov/appreports.aspx>

**** STATISTICAL BULLETIN ****
ARIZONA DEPARTMENT OF ECONOMIC SECURITY
FAMILY ASSISTANCE ADMINISTRATION
BOX 6123, PHOENIX, ARIZONA 85005
PHONE (602) 542-3678

AUGUST 2011

THIS ISSUE OF THE STATISTICAL BULLETIN COMPARES AUGUST 2011 DATA FOR EACH OF THE INDICATED PROGRAMS WITH THE INFORMATION FOR JULY 2011 AND AUGUST 2010. STATEWIDE SUMMARIES OF ACTIVITY WITHIN EACH OF THE SPECIFIC PROGRAMS FOR THIS REPORT PERIOD ARE DISCUSSED BELOW. THE TABLES COMPARE CURRENT AND PRIOR MONTH DATA. DISTRICT AND COUNTY COMPARISONS ARE PROVIDED WITHIN THIS BULLETIN

TANF SUMMARY

COMPARING TO JULY 2011, AUGUST 2011 CASES DECREASED BY 1,515 (8.30%) TO 16,741. RECIPIENTS DECREASED BY 3,491 (8.46%) TO 37,793. PAYMENTS DECREASED BY \$329,367 (8.61%) TO \$3,494,397. AVERAGE PAYMENT PER CASE DECREASED BY \$0.72 (0.34%) TO \$0.00. PAYMENT PER RECIPIENT DECREASED BY \$0.16 (0.17%) TO \$92.46.

COMPARING TO AUGUST 2010, AUGUST 2011 CASES DECREASED BY 5,689 (25.36%). RECIPIENTS DECREASED BY 12,438 (24.76%). TOTAL PAYMENTS DECREASED BY \$1,262,648 (26.54%). THE AVERAGE PAYMENT PER CASE DECREASED BY \$3.35 (1.58%). THE AVERAGE PAYMENT PER RECIPIENT DECREASED BY \$2.24 (2.37%).

CASH ASSISTANCE (CA)

COMPARING TO JULY 2011, AUGUST 2011 CASES DECREASED BY 1,388 (8.11%) TO 15,730. RECIPIENTS DECREASED BY 3,196 (8.39%) TO 34,900. PAYMENTS DECREASED BY \$317,254 (8.70%) TO \$3,327,854. AVERAGE PAYMENT PER CASE DECREASED BY \$1.38 (0.65%) TO \$211.56. PAYMENT PER RECIPIENT DECREASED BY \$0.33 (0.34%) TO \$95.35.

COMPARING TO AUGUST 2010, AUGUST 2011 CASES DECREASED BY 5,456 (25.75%). RECIPIENTS DECREASED BY 11,691 (25.09%). TOTAL PAYMENTS DECREASED BY \$1,206,585 (26.61%). THE AVERAGE PAYMENT PER CASE DECREASED BY \$2.47 (1.15%). THE AVERAGE PAYMENT PER RECIPIENT DECREASED BY \$1.97 (2.02%).

CASH ASSISTANCE UNEMPLOYED PARENT PROGRAM (CA-UP)

COMPARING TO JULY 2011, AUGUST 2011 CASES DECREASED BY 20 (4.57%) TO 418. RECIPIENTS DECREASED BY 61 (3.62%) TO 1,622. PAYMENTS DECREASED BY \$5,328 (4.14%) TO \$123,493. AVERAGE PAYMENT PER CASE INCREASED BY \$1.33 (0.45%) TO \$295.44. PAYMENT PER RECIPIENT DECREASED BY \$0.40 (0.53%) TO \$76.14.

COMPARING TO AUGUST 2010, AUGUST 2011 CASES DECREASED BY 228 (35.29%). RECIPIENTS DECREASED BY 736 (31.21%). TOTAL PAYMENTS DECREASED BY \$57,033 (31.59%). THE AVERAGE PAYMENT PER CASE INCREASED BY \$15.99 (5.72%). THE AVERAGE PAYMENT PER RECIPIENT DECREASED BY \$0.42 (0.55%).

CASH ASSISTANCE WITH GRANT UNDER \$100 (CA-MOE)

COMPARING TO JULY 2011, AUGUST 2011 CASES DECREASED BY 107 (15.46%) TO 585. RECIPIENTS DECREASED BY 240 (16.25%) TO 1,237. PAYMENTS DECREASED BY \$6,767 (13.72%) TO \$42,558. AVERAGE PAYMENT PER CASE INCREASED BY \$1.47 (2.06%) TO \$72.75. AVERAGE PAYMENT PER RECIPIENT INCREASED BY \$1.00 (2.99%) TO \$34.40.

COMPARING TO AUGUST 2010, AUGUST 2011 CASES INCREASED BY 7 (1.21%). RECIPIENTS INCREASED BY 20 (1.64%). TOTAL PAYMENTS INCREASED BY \$1,409 (3.42%). THE AVERAGE PAYMENT PER CASE INCREASED BY \$1.56 (2.19%). THE AVERAGE PAYMENT PER RECIPIENT INCREASED BY \$0.59 (1.75%).

CASH ASSISTANCE UNEMPLOYED PARENT PROGRAM WITH GRANT UNDER \$100 (CA-UP-MOE) NEW PROGRAM STARTING 7/01

COMPARING TO JULY 2011, AUGUST 2011 CASES INCREASED BY 0 (0.00%) TO 8. RECIPIENTS INCREASED BY 6 (21.43%) TO 34. PAYMENTS DECREASED BY \$18 (3.53%) TO \$492. AVERAGE PAYMENT PER CASE DECREASED BY \$2.25 (3.53%) TO \$61.50. PAYMENT PER RECIPIENT DECREASED BY \$3.74 (20.54%) TO \$14.47.

COMPARING TO AUGUST 2010, AUGUST 2011 CASES DECREASED BY 12 (60.00%). RECIPIENTS DECREASED BY 31 (6.08%). TOTAL PAYMENTS DECREASED BY \$439 (47.15%). THE AVERAGE PAYMENT PER CASE INCREASED BY \$14.95 (32.12%). THE AVERAGE PAYMENT PER RECIPIENT INCREASED BY \$0.15 (1.05%).

TUBERCULOSIS CONTROL PROGRAM (TC)

COMPARING TO JULY 2011, AUGUST 2011 CASES INCREASED BY 1 (20.00%) TO 6. RECIPIENTS INCREASED BY 1 (20.00%) TO 6. PAYMENTS INCREASED BY \$104 (14.15%) TO \$839. AVERAGE PAYMENT PER CASE INCREASED BY \$61.73 (41.99%) TO \$208.73. AVERAGE PAYMENT PER RECIPIENT DECREASED BY \$7.17 (4.88%) TO \$139.83.

COMPARING TO AUGUST 2010, AUGUST 2011 CASES INCREASED BY 5 (500.00%). RECIPIENTS INCREASED BY 5 (500.00%). TOTAL PAYMENTS INCREASED BY \$666 (384.97%). THE AVERAGE PAYMENT PER CASE INCREASED BY \$35.73 (20.65%). THE AVERAGE PAYMENT PER RECIPIENT DECREASED BY \$33.17 (19.17%).

SUPPLEMENTAL NUTRITION ASSISTANCE PROGRAM (SNAP)

COMPARING TO JULY 2011, AUGUST 2011 SUPPLEMENTAL NUTRITION ASSISTANCE HOUSEHOLDS INCREASED BY 8,341 (1.75%) TO 485,568. PERSONS RECEIVING SUPPLEMENTAL NUTRITION ASSISTANCE INCREASED BY 20,760 (1.88%) TO 1,123,333. TOTAL COUPON ISSUANCE INCREASED BY \$3,060,304 (2.19%) TO \$142,770,550. THE AVERAGE HOUSEHOLD ALLOTMENT INCREASED BY \$1.28 (0.44%) TO \$294.03. THE AVERAGE ALLOTMENT PER PERSON INCREASED BY \$0.39 (0.31%) TO \$127.10.

COMPARING TO AUGUST 2010, AUGUST 2011 SUPPLEMENTAL NUTRITION ASSISTANCE HOUSEHOLDS INCREASED BY 28,658 (6.27%). PERSONS RECEIVING SUPPLEMENTAL NUTRITION ASSISTANCE INCREASED BY 75,554 (7.21%). TOTAL COUPON ISSUANCE INCREASED BY \$8,356,973 (6.22%). THE AVERAGE ALLOTMENT PER HOUSEHOLD DECREASED BY \$0.15 (0.05%). THE AVERAGE ALLOTMENT PER PERSON DECREASED BY \$1.18 (0.92%).

MEDICAL ASSISTANCE PROGRAM (MA) NEW TABLE INCLUDES PROP. 204 CATEGORIES

COMPARING TO JULY 2011, AUGUST 2011 TOTAL RECIPIENTS TOTAL RECIPIENTS DECREASED BY 4,437 (0.36%). SOBRA WOMEN AT 140% FPL INCREASED BY 206 (1.82%). SOBRA CHILDREN DECREASED BY 21 (0.03%). ADULTS W/O CHILD AT 100% DECREASED BY 5,534 (8.66%). FOSTER CARE INCREASED BY 122 (0.00%). 1931 AT 36% FPL INCREASED BY 9,389 (0.00%). EMERGENCY SERVICES INCREASED BY 1,950 (3.67%). INFANTS INCREASED BY 427 (0.93%). ADULT W/O CHILD AT 140% DECREASED BY 11,834 (6.75%). MEDICAL W/SPEND DOWN DECREASED BY 1,266 (35.99%). SOBRA WOMAN AT 100% INCREASED BY 80 (1.91%). SOBRA CHILD AT 100% INCREASED BY 1,682 (0.71%). TRANSITIONAL MEDICAL INCREASED BY 345 (0.81%). 1931 AT 100% DECREASED BY 11 (0.01%). YATI DECREASED BY 10 (2.94%). ALL OTHER CATEGORIES INCREASED BY 38 (0.13%).

COMPARING TO AUGUST 2010, AUGUST 2011 TOTAL RECIPIENTS TOTAL RECIPIENTS INCREASED BY 31,349 (2.62%). SOBRA WOMEN AT 140% FPL INCREASED BY 678 (6.26%). SOBRA CHILDREN INCREASED BY 1,729 (2.53%). ADULTS W/O CHILD AT 100% DECREASED BY 3,206 (5.20%). FOSTER CARE INCREASED BY 1,221 (10.11%). 1931 AT 36% FPL INCREASED BY 23,980 (7.04%). EMERGENCY SERVICES DECREASED BY 1,279 (2.27%). INFANTS DECREASED BY 1,807 (3.77%). ADULT W/O CHILD AT 140% DECREASED BY 5,933 (3.50%). MEDICAL W/SPEND DOWN DECREASED BY 5,148 (69.57%). SOBRA WOMAN AT 100% INCREASED BY 518 (13.84%). SOBRA CHILD AT 100% INCREASED BY 12,917 (5.68%). TRANSITIONAL MEDICAL DECREASED BY 510 (1.18%). 1931 AT 100% INCREASED BY 6,000 (4.95%). YATI DECREASED BY 19 (5.44%). ALL OTHER CATEGORIES INCREASED BY 2,208 (7.98%).

TANF SUMMARY

TABLES 1, 1A, 1B, & 1C: ARIZONA 1/

	AUGUST 2011							JULY 2011			CHANGE FROM AUGUST 2010		
	FAMILIES (CASES)	PERSONS (RECIP.)	ADULTS	CHILDREN	TOTAL PAYMENTS	AVERAGE PAYMENT/ CASE	AVERAGE PAYMENT/ RECIP.	FAMILIES (CASES)	PERSONS (RECIP.)	TOTAL PAYMENTS	FAMILIES (CASES)	PERSONS (RECIP.)	TOTAL PAYMENTS
	ARIZONA	16,741	37,793	10,051	27,742	3,494,397	208.73	92.46	(1,515)	(3,491)	(329,367)	(5,689)	(12,438)
REGION													
MARICOPA	10,042	23,084	5,975	17,109	2,099,784	209.10	90.96	(1,213)	(2,931)	(264,379)	(4,045)	(9,279)	(901,847)
NORTHERN	992	2,275	636	1,639	202,158	203.79	88.86	(33)	(36)	(7,131)	(292)	(474)	(64,094)
APACHE	33	78	27	51	6,629	200.88	84.99	(7)	(12)	(1,331)	(14)	(9)	(2,158)
COCONINO	49	124	31	93	10,581	215.94	85.33	(11)	(22)	(2,195)	(53)	(90)	(10,621)
MOHAVE	579	1,275	345	930	118,162	204.08	92.68	(32)	(59)	(6,986)	(139)	(220)	(29,752)
NAVAJO	331	798	233	565	66,786	201.77	83.69	17	57	3,381	(86)	(155)	(21,563)
CENTRAL	1,941	4,215	1,148	3,067	399,878	206.02	94.87	(83)	(153)	(22,207)	(685)	(1,525)	(164,877)
GILA	432	916	326	590	102,321	236.85	111.70	0	4	(1,030)	(161)	(397)	(45,693)
LA PAZ	66	146	39	107	11,287	171.02	77.31	(4)	(1)	(2,339)	(30)	(69)	(8,772)
PINAL	743	1,606	388	1,218	146,606	197.32	91.29	(68)	(142)	(12,866)	(293)	(673)	(64,264)
YAVAPAI	268	530	118	412	49,954	186.40	94.25	1	13	(1,413)	(84)	(163)	(20,268)
YUMA	432	1,017	277	740	89,710	207.66	88.21	(12)	(27)	(4,559)	(117)	(223)	(25,880)
SOUTHERN	3,766	8,219	2,292	5,927	792,577	210.46	96.43	(186)	(371)	(35,650)	(667)	(1,160)	(131,830)
COCHISE	328	648	148	500	65,772	200.52	101.50	(10)	(13)	(2,604)	(74)	(150)	(17,102)
GRAHAM	228	480	161	319	52,236	229.11	108.83	2	13	(457)	29	108	7,157
GREENLEE	9	21	7	14	2,019	224.33	96.14	(3)	(8)	(978)	(9)	(20)	(1,821)
P MA	3,107	6,860	1,932	4,928	653,311	210.27	95.23	(175)	(374)	(31,906)	(582)	(1,050)	(114,934)
SANTA CRUZ	94	210	44	166	19,239	204.67	91.61	0	11	295	(31)	(48)	(5,130)

1/EXCLUDES: PRIOR MONTH NET TOTALS OF 944 CASES; 2,350 REC P ENTS; \$153,062.
 GRANT DIVERSION TOTALS OF: 2,493 CASES; \$1,910,266.
 ZERO PAY TOTALS OF 5,592 CASES; 16,521 REC P ENTS.
 RRP: 157 CASES; 233 RECIPIENTS; \$30,613.
 1/INCLUDES: TANF CHILD ONLY: 7,154 CASES; 12,124 RECIPIENTS; \$1,342,791.

	CURRENT MO. CASES	CURRENT MO. RECIP.	CURRENT MO. DOLLARS	PRIOR MO. CASES	PRIOR MO. RECIP.	PRIOR MO. DOLLARS
PASQUA/YAQUI	264	756	\$79,806	13	36	\$3,508
WM APACHE	0	0	\$0	0	0	\$0
SALT RIVER	82	272	\$26,265	5	20	\$984
SAN CARLOS	470	1,006	\$114,822	22	50	\$3,635
HOPÍ	117	326	\$25,148	14	43	\$1,636
TOTAL	933	2,360	\$246,041	54	149	\$9,763

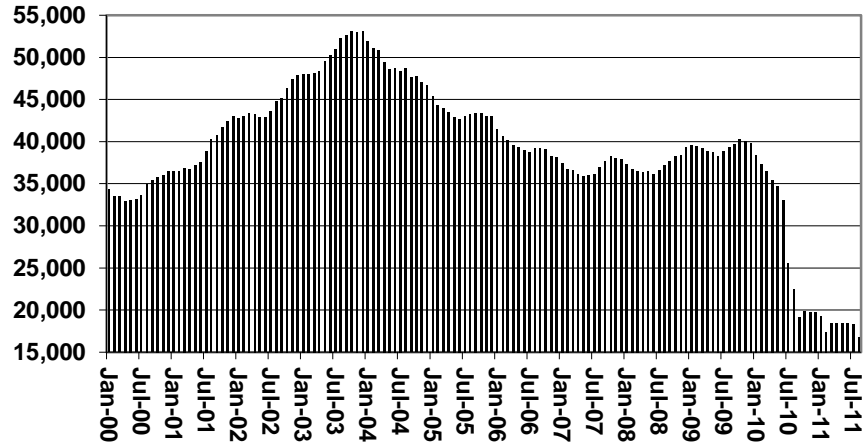
TANF SUMMARY

TABLES 1, 1A, 1B, & 1C

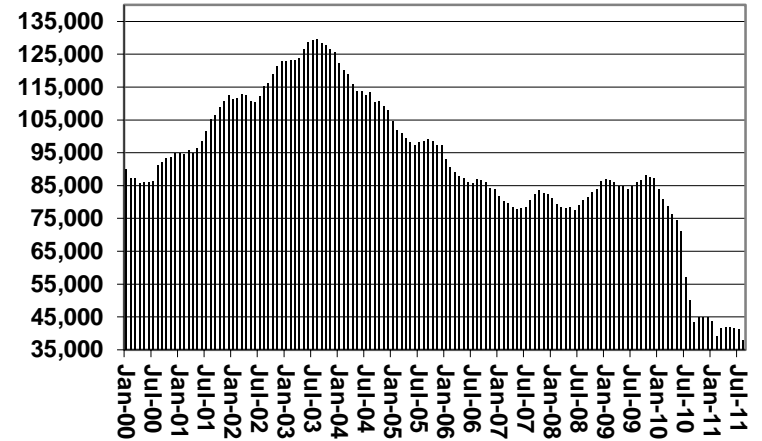
COMPARISON OF CASES, RECIPIENTS, PAYMENTS & AVERAGE PAYMENTS

FOR 2000, 2001, 2002, 2003, 2004, 2005, 2006, 2007, 2008, 2009, 2010, & 2011

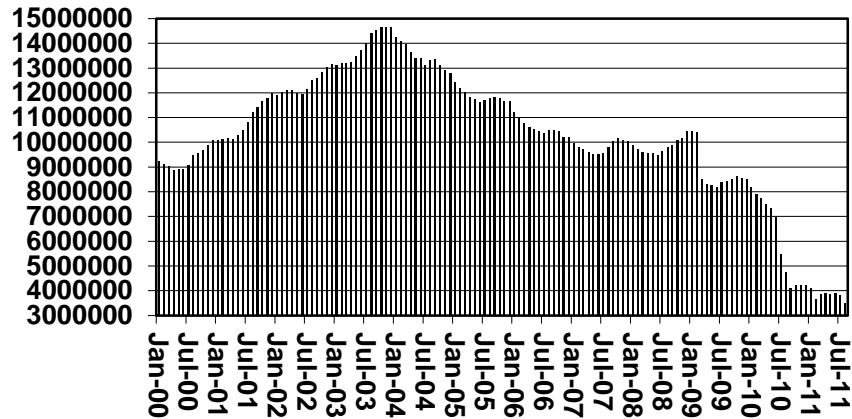
Cases



Recipients



Payments



Average Payments Per Recipient

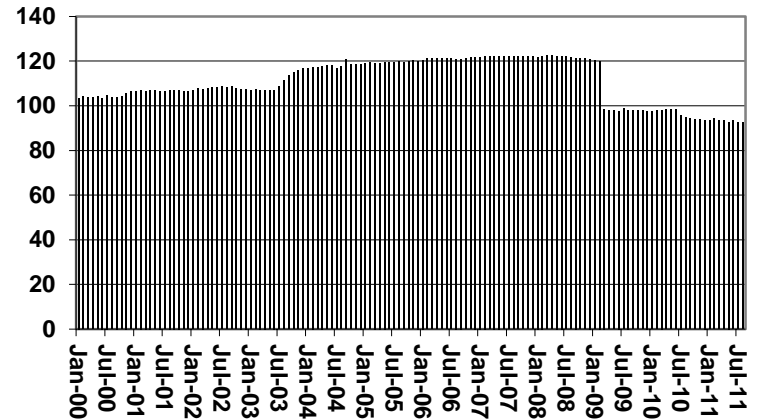
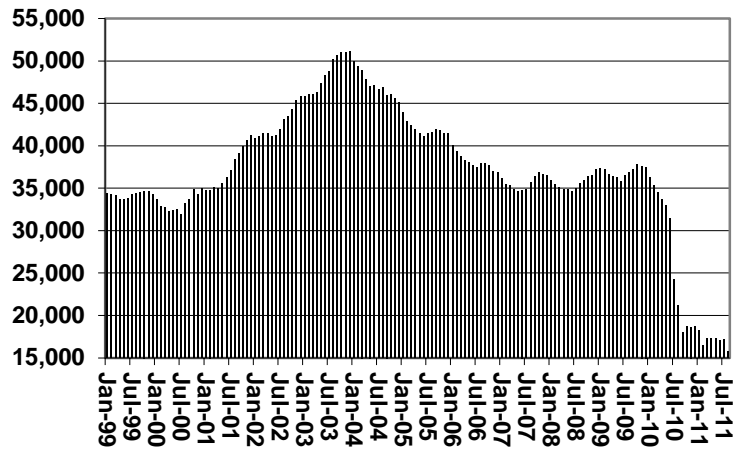


CHART 1

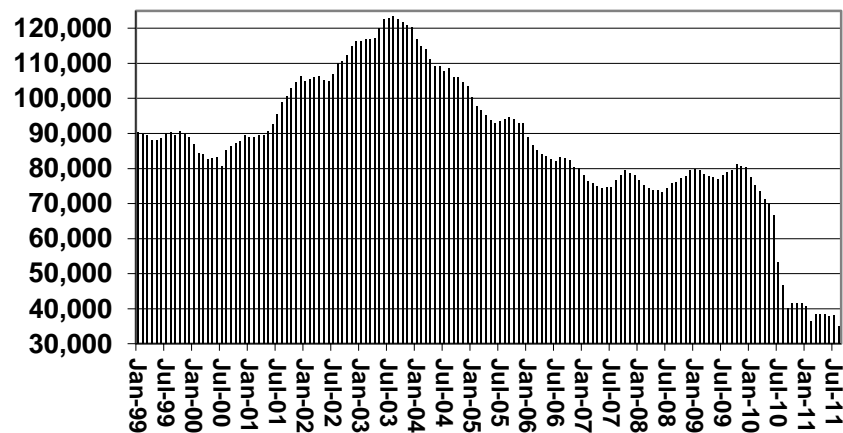
CASH ASSISTANCE PROGRAM

COMPARISON OF CASES, RECIPIENTS, PAYMENTS & AVERAGE PAYMENTS FOR 1999, 2000, 2001, 2002, 2003, 2004, 2005, 2006, 2007, 2008, 2009, 2010, & 2011

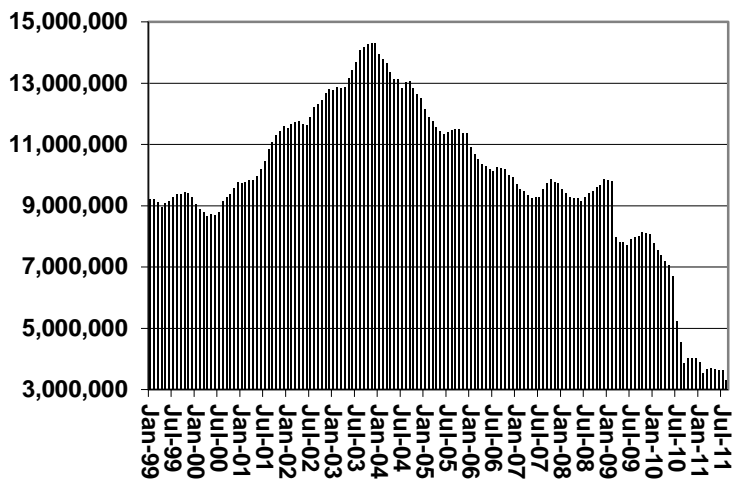
Cases



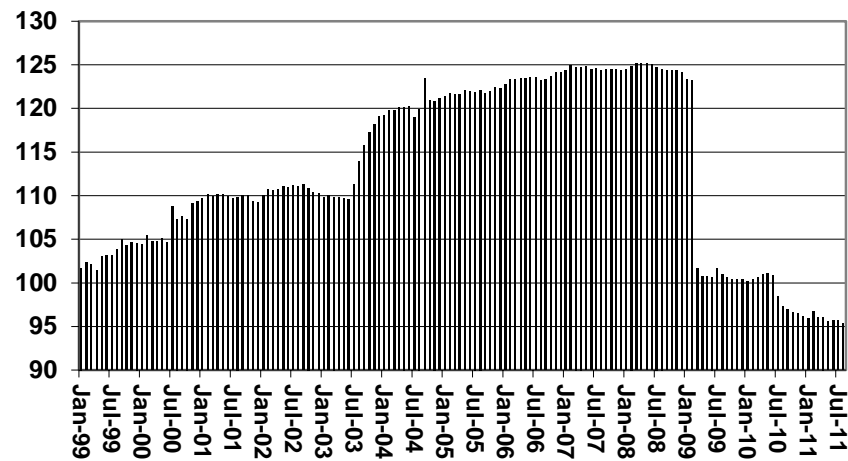
Recipients



Payments



Average Payment Per Recipient



**TABLE 1A
CA-UP**

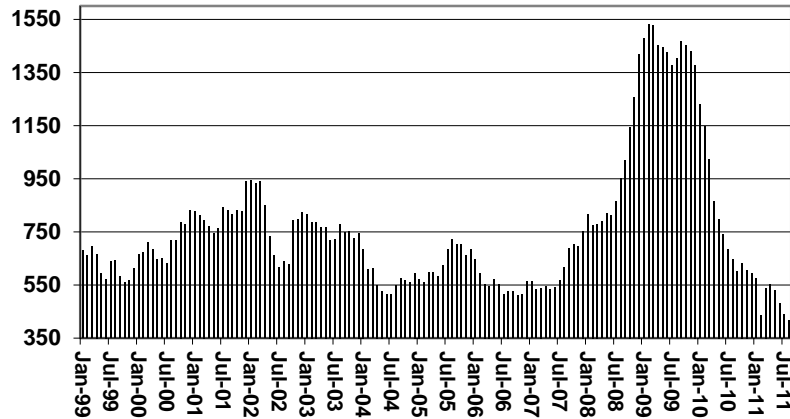
CASH ASSISTANCE UNEMPLOYED PARENT PROGRAM: ARIZONA 1/

	AUGUST 2011							CHANGE FROM			AUGUST 2010		
					AVERAGE		JULY 2011			AUGUST 2010			
	FAMILIES (CASES)	PERSONS (RECIP.)	ADULTS	CHILDREN	TOTAL PAYMENTS	PAYMENT/ CASE	PAYMENT/ RECIP.	FAMILIES (CASES)	PERSONS (RECIP.)	TOTAL PAYMENTS	FAMILIES (CASES)	PERSONS (RECIP.)	TOTAL PAYMENTS
ARIZONA	418	1,622	744	878	123,493	295.44	76.14	(20)	(61)	(5,328)	(228)	(736)	(57,033)
REGION													
MARICOPA	239	925	404	521	71,188	297.86	76.96	(8)	(26)	(2,051)	(226)	(744)	(58,715)
NORTHERN	35	144	70	74	10,844	309.83	75.31	(1)	(2)	(519)	18	92	6,808
APACHE	3	14	6	8	1,003	334.33	71.64	(1)	(4)	(392)	3	14	1,003
COCONINO	0	0	0	0	0	0.00	0.00	(1)	(3)	(347)	0	0	0
MOHAVE	27	111	54	57	8,403	311.22	75.70	2	8	324	14	70	5,056
NAVAJO	5	19	10	9	1,438	287.60	75.68	(1)	(3)	(104)	1	8	749
CENTRAL	35	144	66	78	10,423	297.80	72.38	(1)	3	26	(17)	(58)	(4,145)
GILA	1	4	2	2	211	211.00	52.75	1	4	211	(2)	(6)	(617)
LA PAZ	0	0	0	0	0	0.00	0.00	0	0	0	(4)	(15)	(1,283)
PINAL	18	79	34	45	5,407	300.39	68.44	(2)	(1)	(185)	(11)	(37)	(2,245)
YAVAPAI	3	11	4	7	796	265.33	72.36	(6)	(19)	(1,446)	(1)	(7)	(658)
YUMA	13	50	26	24	4,009	308.38	80.18	3	7	564	(4)	(9)	(486)
SOUTHERN	109	409	204	205	31,038	284.75	75.89	(7)	(24)	(1,902)	2	(10)	163
COCHISE	2	6	4	2	484	242.00	80.67	(1)	(2)	(292)	(1)	(6)	(487)
GRAHAM	2	6	2	4	556	0.00	0.00	0	(2)	(114)	2	6	556
GREENLEE	0	0	0	0	0	0.00	0.00	0	0	0	0	0	0
PIMA	105	397	198	199	29,998	285.70	75.56	(6)	(20)	(1,496)	1	(10)	94
SANTA CRUZ	0	0	0	0	0	0.00	0.00	0	0	0	0	0	0
<p>1/EXCLUDES: PRIOR MONTH NET TOTALS OF: 38 CASES; 148 REC P ENTS; \$11,894. GRANT DIVERSION TOTALS OF: 0 CASES; \$0. ZERO PAY TOTALS OF 5 CASES; 25 REC P ENTS.</p>													
							PASQUAYQUI	CURRENT MO. CASES	CURRENT MO. RECIP.	CURRENT MO. DOLLARS	PRIOR MO. CASES	PRIOR MO. RECIP.	PRIOR MO. DOLLARS
							WM APACHE	12	54	\$3,953	1	4	\$48
							SALT RIVER	0	0	\$0	0	0	\$0
							SAN CARLOS	0	0	\$0	0	0	\$0
							HOPI	1	3	\$139	0	0	\$0
							HOPI	0	0	\$0	0	0	\$0
							TOTAL	13	57	\$4,092	1	4	\$48
<p>CASES WITH GRANT UNDER \$100 (SEE TABLE 1C).</p>													

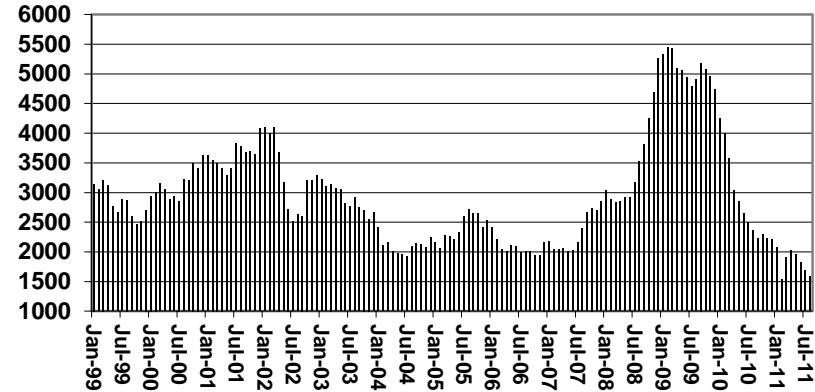
CHART 1A

CASH ASSISTANCE UNEMPLOYED PARENT PROGRAM COMPARISON OF CASES, RECIPIENTS, PAYMENTS & AVERAGE PAYMENTS FOR 1999, 2000, 2001, 2002, 2003, 2004, 2005, 2006, 2007, 2008, 2009, 2010, & 2011

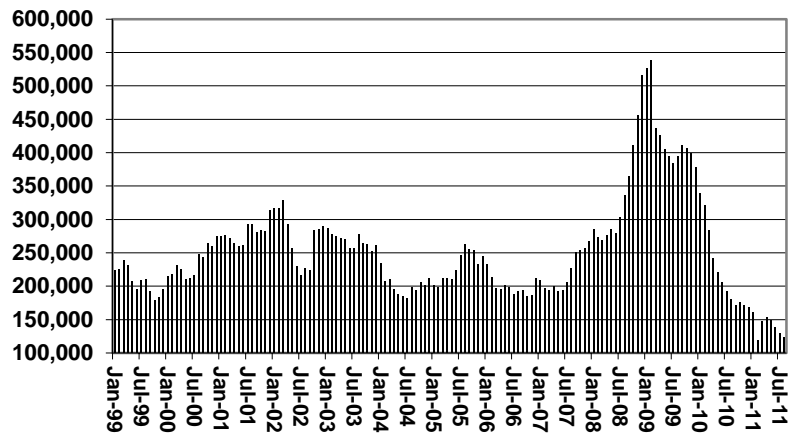
Cases



Recipients



Payments



Average Payment Per Recipient

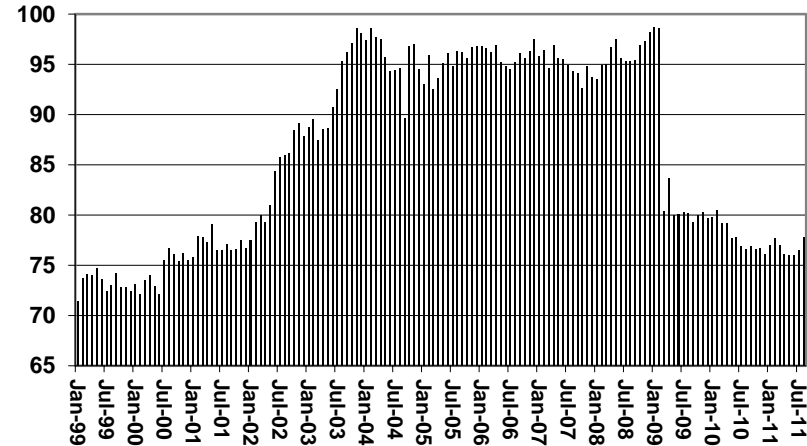


TABLE 1B 1/

CASH ASSISTANCE: ARIZONA
 CASES WITH GRANT UNDER \$100

	AUGUST 2011							CHANGE FROM			AUGUST 2010		
	FAMILIES (CASES)	PERSONS (RECIP.)	ADULTS	CHILDREN	TOTAL PAYMENTS	AVERAGE PAYMENT/ CASE	AVERAGE PAYMENT/ RECIP.	FAMILIES (CASES)	PERSONS (RECIP.)	TOTAL PAYMENTS	FAMILIES (CASES)	PERSONS (RECIP.)	TOTAL PAYMENTS
ARIZONA	585	1,237	332	905	42,558	72.75	34.40	(107)	(240)	(6,767)	7	20	1,409
REGION													
MARICOPA	351	736	198	538	25,947	73.92	35.25	(91)	(197)	(5,226)	(30)	(97)	(431)
NORTHERN	36	74	20	54	2,559	71.08	34.58	(9)	(24)	(874)	7	11	239
APACHE	1	1	0	1	108	108.00	108.00	(1)	(2)	(94)	(2)	(5)	(119)
COCONINO	2	4	2	2	69	34.50	17.25	(4)	(10)	(243)	0	0	(30)
MOHAVE	22	44	11	33	1,613	73.32	36.66	1	4	27	3	2	363
NAVAJO	11	25	7	18	769	69.91	30.76	(5)	(16)	(564)	6	14	25
CENTRAL	73	160	48	112	5,069	69.44	31.68	13	38	999	22	68	1,217
GILA	2	4	1	3	159	79.50	39.75	(1)	(1)	(74)	(5)	(11)	(246)
LA PAZ	7	17	6	11	362	51.71	21.29	1	8	(3)	4	12	21
PINAL	26	60	17	43	1,818	69.92	30.30	(2)	(1)	(115)	8	29	339
YAVAPAI	21	42	12	30	1,614	76.86	38.43	10	22	886	11	24	1,019
YUMA	17	37	12	25	1,116	65.65	30.16	5	10	305	4	14	84
SOUTHERN	125	267	66	201	8,983	71.86	33.64	(20)	(57)	(1,666)	8	38	384
COCHISE	11	22	3	19	637	57.91	28.95	(2)	1	(500)	(2)	(2)	(153)
GRAHAM	5	14	5	9	395	79.00	28.21	4	13	306	3	8	341
GREENLEE	0	0	0	0	0	0.00	0.00	0	0	0	0	0	0
PIMA	104	220	55	165	7,650	73.56	34.77	(24)	(74)	(1,545)	8	31	372
SANTA CRUZ	5	11	3	8	301	60.20	27.36	2	3	73	(1)	1	(176)

EXCLUDES: PRIOR MONTH NET TOTALS OF 0 CASES; 0 RECIPIENTS;

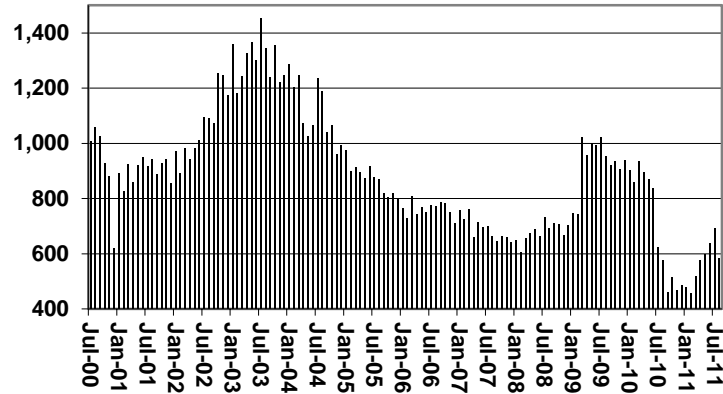
22

CHART 1B

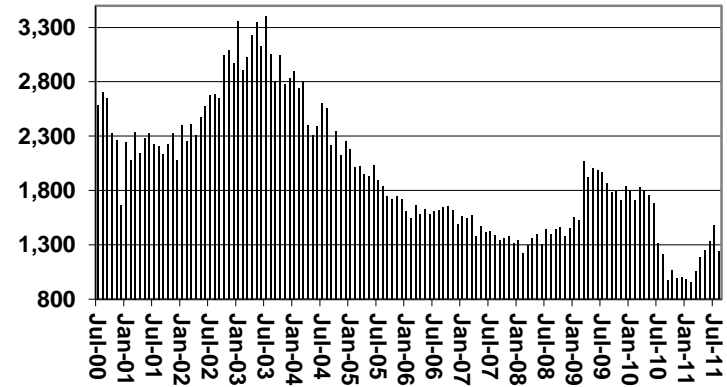
CASH ASSISTANCE PROGRAM CASES WITH GRANT UNDER \$100

FOR 1999, 2000, 2001, 2002, 2003, 2004, 2005, 2006, 2007, 2008, 2009, 2010, & 2011

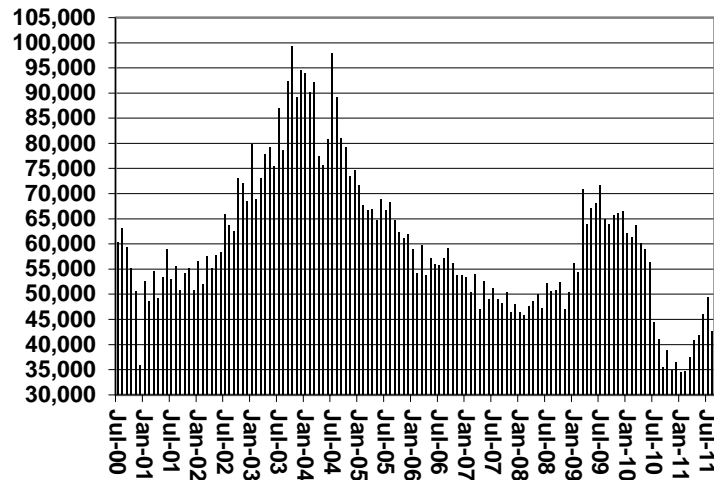
Cases



Recipients



Payments



Average Payment Per Recipient

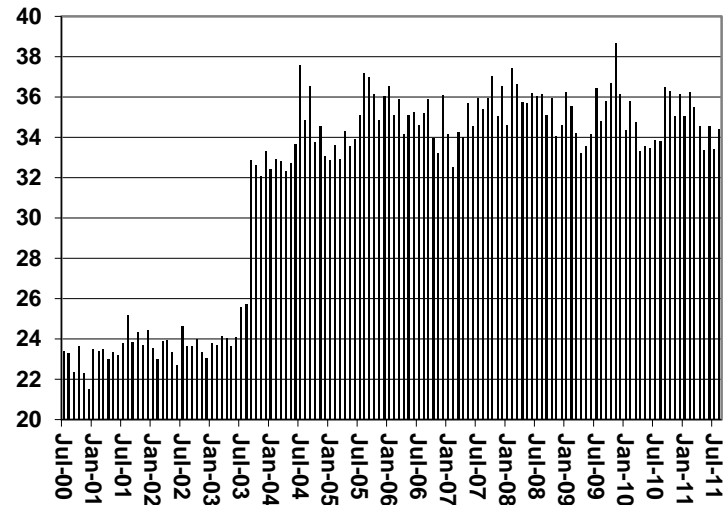


TABLE 1C 1/

CASH ASSISTANCE UNEMPLOYED PARENT PROGRAM: ARIZONA
 CASES WITH GRANT UNDER \$100

	CHANGE FROM												
	AUGUST 2011							JULY 2011			AUGUST 2010		
	FAMILIES (CASES)	PERSONS (RECIP.)	ADULTS	CHILDREN	TOTAL PAYMENTS	AVERAGE PAYMENT/ CASE	AVERAGE PAYMENT/ RECIP.	FAMILIES (CASES)	PERSONS (RECIP.)	TOTAL PAYMENTS	FAMILIES (CASES)	PERSONS (RECIP.)	TOTAL PAYMENTS
ARIZONA	8	68	30	38	492	61.50	7.24	0	40	(18)	(12)	3	(439)
REGION													
MARICOPA	5	42	20	22	333	66.60	7.93	2	34	163	(11)	(10)	(439)
NORTHERN	1	6	2	4	51	51.00	8.50	1	6	51	0	3	30
APACHE	0	0	0	0	0	0.00	0.00	0	0	0	0	0	0
COCONINO	1	6	2	4	51	51.00	8.50	1	6	51	1	6	51
MOHAVE	0	0	0	0	0	0.00	0.00	0	0	0	(1)	(3)	(21)
NAVAJO	0	0	0	0	0	0.00	0.00	0	0	0	0	0	0
CENTRAL	1	10	4	6	16	16.00	1.60	0	5	0	(1)	2	(39)
GILA	0	0	0	0	0	0.00	0.00	0	0	0	(1)	(5)	(37)
LA PAZ	0	0	0	0	0	0.00	0.00	0	0	0	0	0	0
PINAL	1	10	4	6	16	16.00	1.60	0	5	0	0	7	(2)
YAVAPAI	0	0	0	0	0	0.00	0.00	0	0	0	0	0	0
YUMA	0	0	0	0	0	0.00	0.00	0	0	0	0	0	0
SOUTHERN	1	10	4	6	92	92.00	9.20	(3)	(5)	(232)	0	8	9
COCHISE	0	0	0	0	0	0.00	0.00	0	0	0	0	0	0
GRAHAM	0	0	0	0	0	0.00	0.00	0	0	0	0	0	0
GREENLEE	0	0	0	0	0	0.00	0.00	0	0	0	0	0	0
PIMA	1	10	4	6	92	92.00	9.20	(3)	(5)	(232)	0	8	9
SANTA CRUZ	0	0	0	0	0	0.00	0.00	0	0	0	0	0	0

EXCLUDES: PRIOR MONTH NET TOTALS OF 23 CASES; 169 RECIPIENTS; \$1,072.

CHART 1C

CASH ASSISTANCE UNEMPLOYED PARENT PROGRAM

CASES WITH GRANT UNDER \$100

FOR 1999, 2000, 2001, 2002, 2003, 2004, 2005, 2006, 2007, 2008, 2009, 2010, & 2011

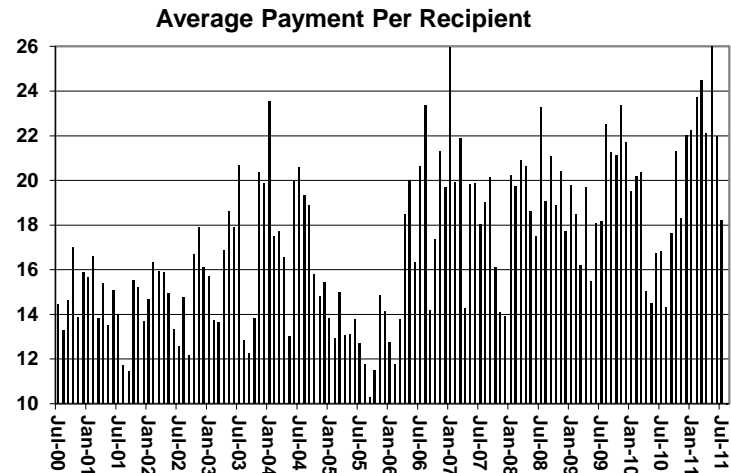
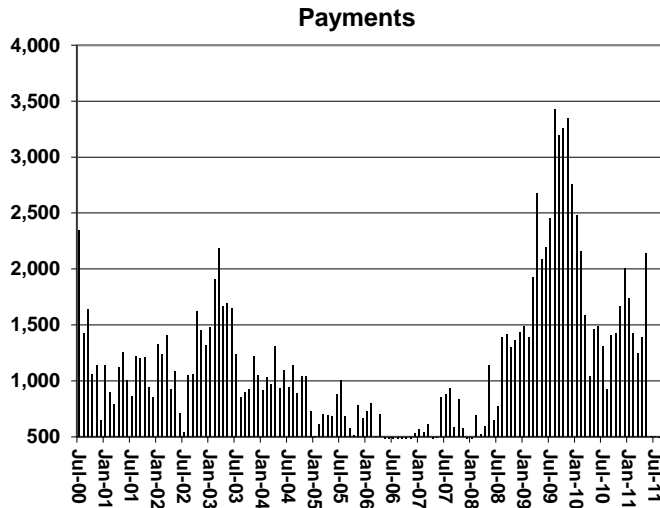
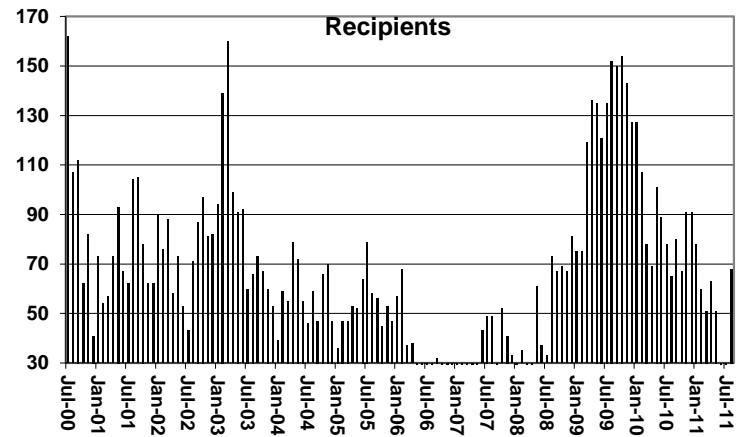
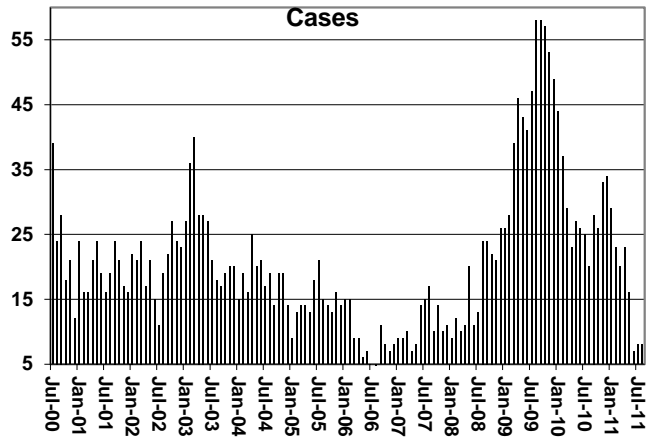


TABLE 4
TUBERCULOSIS CONTROL: ARIZONA 1/

	CHANGE FROM											
	AUGUST 2011					JULY 2011			AUGUST 2010			
	NUMBER OF CASES	PERSONS (RECIP.)	TOTAL PAYMENTS	AVERAGE PAYMENT/ CASE	AVERAGE PAYMENT/ RECIP.	NUMBER OF CASES	PERSONS (RECIP.)	TOTAL PAYMENTS	NUMBER OF CASES	PERSONS (RECIP.)	TOTAL PAYMENTS	
ARIZONA	6	6	839	139.83	139.83	1	1	104	5	5	666	
REGION												
MARICOPA	6	6	839	139.83	139.83	1	1	104	5	5	666	
NORTHERN	0	0	0	0.00	0.00	0	0	0	0	0	0	
APACHE	0	0	0	0.00	0.00	0	0	0	0	0	0	
COCONINO	0	0	0	0.00	0.00	0	0	0	0	0	0	
MOHAVE	0	0	0	0.00	0.00	0	0	0	0	0	0	
NAVAJO	0	0	0	0.00	0.00	0	0	0	0	0	0	
CENTRAL	0	0	0	0.00	0.00	0	0	0	0	0	0	
GILA	0	0	0	0.00	0.00	0	0	0	0	0	0	
LA PAZ	0	0	0	0.00	0.00	0	0	0	0	0	0	
PINAL	0	0	0	0.00	0.00	0	0	0	0	0	0	
YAVAPAI	0	0	0	0.00	0.00	0	0	0	0	0	0	
YUMA	0	0	0	0.00	0.00	0	0	0	0	0	0	
SOUTHERN	0	0	0	0.00	0.00	0	0	0	0	0	0	
COCHISE	0	0	0	0.00	0.00	0	0	0	0	0	0	
GRAHAM	0	0	0	0.00	0.00	0	0	0	0	0	0	
GREENLEE	0	0	0	0.00	0.00	0	0	0	0	0	0	
PIMA	0	0	0	0.00	0.00	0	0	0	0	0	0	
SANTA CRUZ	0	0	0	0.00	0.00	0	0	0	0	0	0	

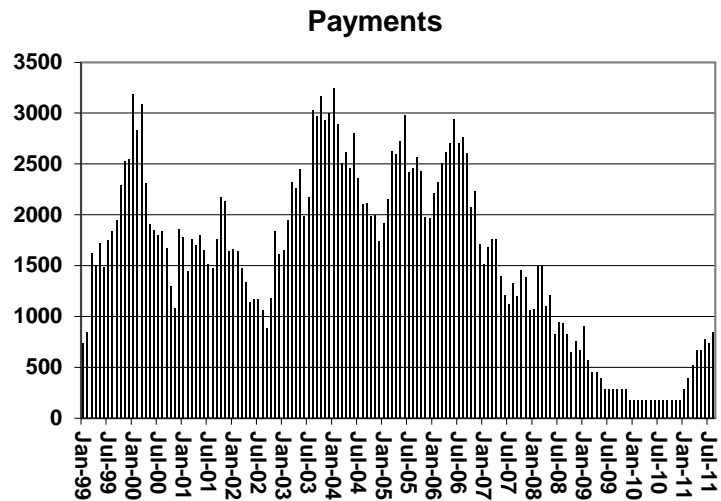
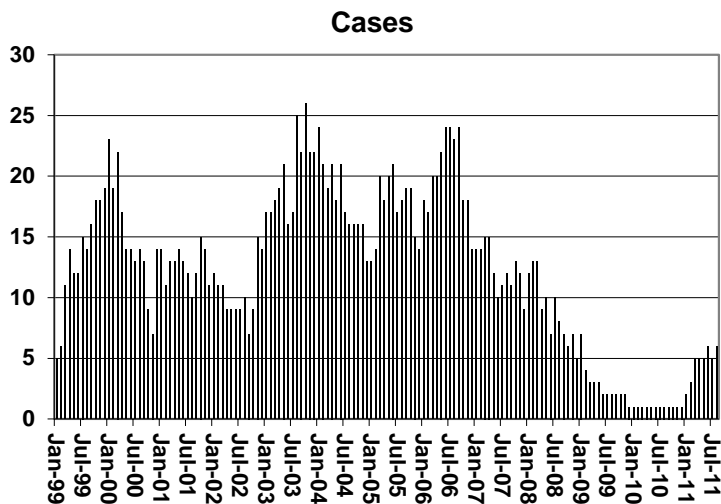
1/EXCLUDES: PRIOR MONTH NET TOTALS OF : 0 CASES; 0 RECIPIENTS; \$0.

CHART 4

TUBERCULOSIS CONTROL PROGRAM

COMPARISON OF CASES, PAYMENTS & AVERAGE PAYMENTS

FOR 1999, 2000, 2001, 2002, 2003, 2004, 2005, 2006, 2007, 2008, 2009, 2010, & 2011



Average Payment Per Case

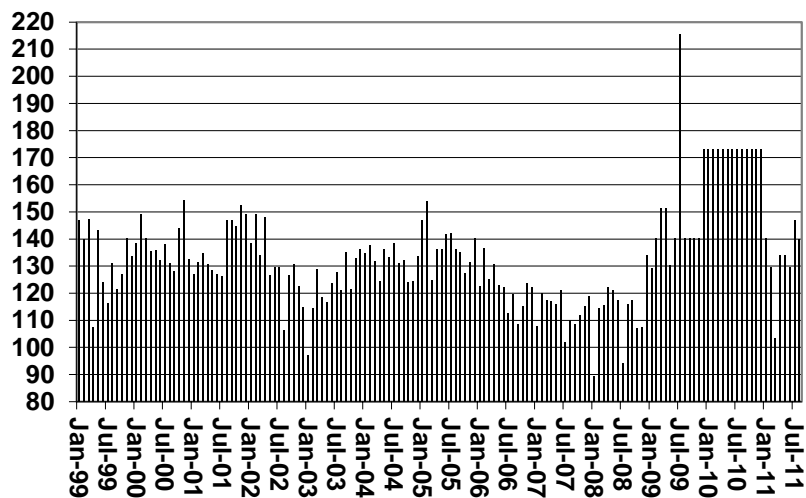


TABLE 6

SUPPLEMENTAL NUTRITION ASSISTANCE PROGRAM: ARIZONA 1/

CHANGE FROM

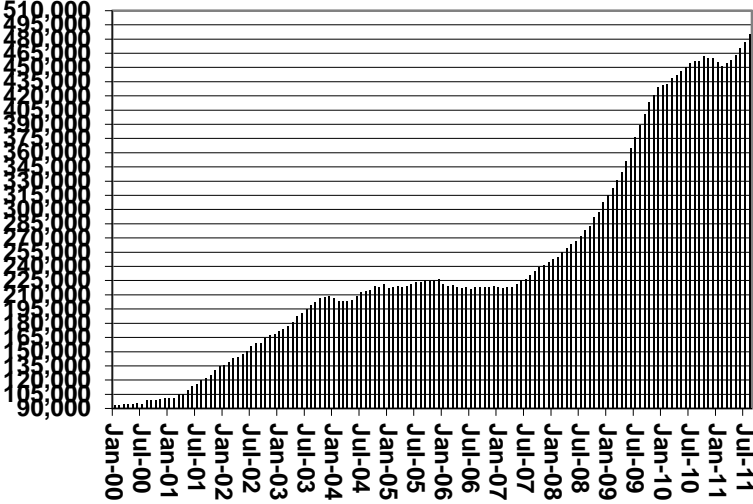
	AUGUST 2011							JULY 2011			AUGUST 2010		
	HOUSEHOLDS	PERSONS	ADULTS	CHILDREN	TOTAL PAYMENTS ISSUANCE	AVERAGE PAYMT./ HOUSEHOLD	AVERAGE PAYMT./ PERSON	HOUSEHOLDS	PERSONS	TOTAL PAYMENTS ISSUANCE	HOUSEHOLDS	PERSONS	TOTAL PAYMENTS ISSUANCE
ARIZONA	485,568	1,123,333	579,439	543,894	142,770,550	294.03	127.10	8,341	20,760	3,060,304	28,658	75,554	8,356,973
REGION													
MARICOPA	260,190	606,623	292,798	313,825	77,914,654	299.45	128.44	4,615	11,615	1,763,512	12,050	37,446	4,634,080
NORTHERN	55,695	135,524	76,314	59,210	16,822,265	302.04	124.13	1,158	2,801	331,699	3,400	7,868	659,173
APACHE	10,589	29,112	15,882	13,230	3,591,558	339.18	123.37	234	652	57,374	753	1,561	145,825
COCONINO	10,001	24,847	13,293	11,554	3,045,437	304.51	122.57	302	704	97,904	457	990	59,838
MOHAVE	21,191	45,273	27,233	18,040	5,684,036	268.23	125.55	331	713	89,127	1,055	2,652	234,446
NAVAJO	13,914	36,292	19,906	16,386	4,501,234	323.50	124.03	291	732	87,294	1,135	2,665	219,064
CENTRAL	64,744	154,389	83,770	70,619	19,011,570	293.64	123.14	1,316	3,487	518,390	5,303	13,881	1,249,394
GILA	6,246	13,711	7,950	5,761	1,769,642	283.32	129.07	46	126	18,476	355	927	76,474
LA PAZ	2,070	4,294	2,480	1,814	551,080	266.22	128.34	62	153	21,894	100	234	20,241
PINAL	23,497	58,367	30,255	28,112	7,367,060	313.53	126.22	471	1,182	182,682	2,433	6,458	705,368
YAVAPAI	15,581	31,658	19,031	12,627	3,904,361	250.58	123.33	222	515	69,608	1,197	2,543	236,330
YUMA	17,350	46,359	24,054	22,305	5,419,427	312.36	116.90	515	1,511	225,730	1,218	3,719	210,981
SOUTHERN	104,939	226,797	126,557	100,240	29,022,061	276.56	127.96	1,252	2,857	446,703	7,905	16,359	1,814,326
COCHISE	11,114	24,052	13,801	10,251	2,955,906	265.96	122.90	189	434	65,337	993	2,097	200,142
GRAHAM	3,615	8,248	4,594	3,654	1,050,611	290.63	127.38	41	102	12,297	312	514	50,878
GREENLEE	523	1,136	656	480	147,105	281.27	129.49	18	53	3,782	21	25	8,472
PIMA	84,985	180,804	101,074	79,730	23,367,161	274.96	129.24	890	2,064	314,647	6,101	12,558	1,426,028
SANTA CRUZ	4,702	12,557	6,432	6,125	1,501,278	319.28	119.56	114	204	50,640	478	1,165	128,806

1/EXCLUDES: PRIOR MONTH NET TOTALS OF : 8,622 CASES; 21,856 REC P ENTS; \$1,468,588.
 AGED CANCELATIONS: 13,393 CASES 17,247 REC P ENTS \$740,884.
 SNAP CONVERSIONS: 0 CASES 0 REC P ENTS \$0.
 SNAP CH LD ONLY: 61,539 CASES; 145,696 REC P ENTS; \$22,004,246.
 SNAP ZERO PAY: 5,344 CASES; 20,399 RECIPIENTS.

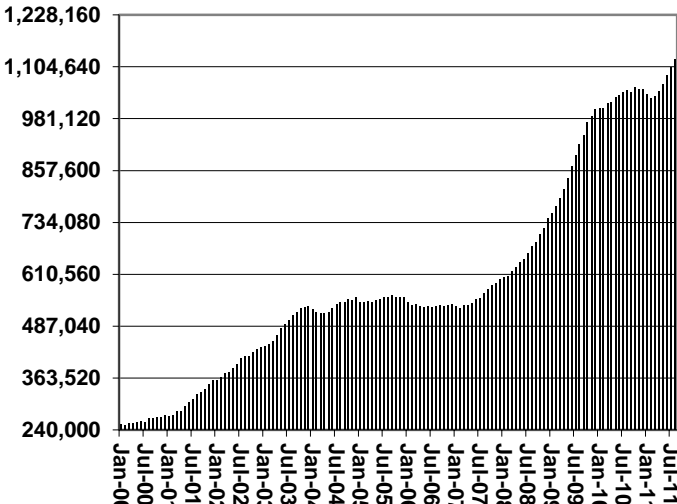
CHART 6

SUPPLEMENTAL NUTRITION ASSISTANCE PROGRAM (SNAP) COMPARISON OF HOUSEHOLDS, RECIPIENTS, PAYMENTS & AVERAGE PAYMENTS FOR 1999, 2000, 2001, 2002, 2003, 2004, 2005, 2006, 2007, 2008, 2009, 2010, & 2011

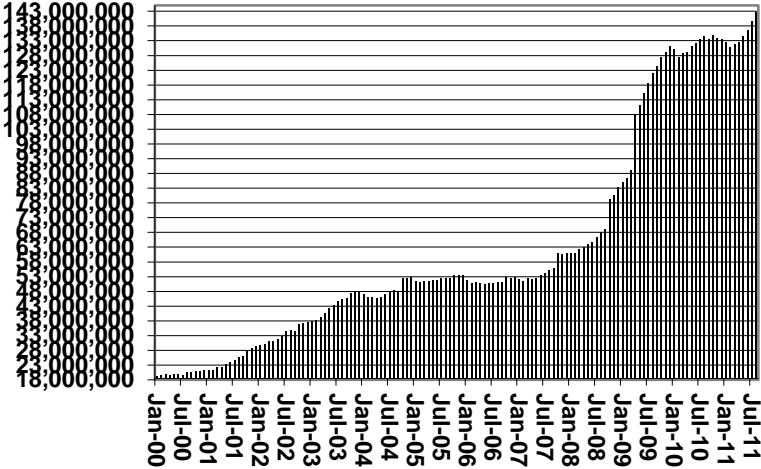
Households



Recipients



Payments



Average Payment Per Household

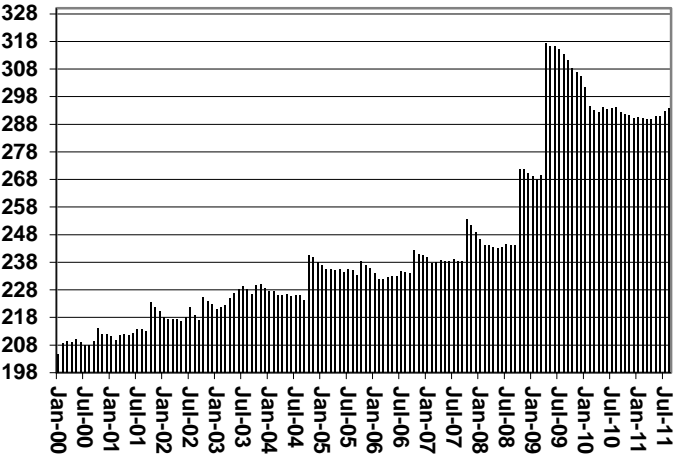


TABLE 7A
MEDICAL ASSISTANCE PROGRAM
RECIPIENTS
AUGUST 2011

	SOBRA WOMAN 133% FPL	SOBRA CHILD	ADULT W/O CHILD 100% FPL	FOSTER CARE	1931 36% FPL	FEDERAL EMERGENCY SERVICES	INFANTS	ADULT W/O CHILD 40% FPL	MEDICAL W/SPEND DOWN	SOBRA WOMAN 100% FPL	SOBRA CHILD 100% FPL	TRANSITIONAL MEDICAL T1 - T4	1931 100% FPL	YATI	OTHER	TOTAL CASES
ARIZONA	11,504	70,158	58,392	13,298	364,705	55,050	46,187	163,581	2,252	4,261	240,260	42,840	127,311	330	29,862	1,229,991
REGION																
MARICOPA	6,454	40,002	28,834	7,242	203,976	43,459	27,437	83,475	1,167	2,309	141,706	22,625	65,884	180	15,517	690,267
NORTHERN	1,268	7,699	6,939	678	46,168	996	4,704	24,537	367	542	23,936	4,774	15,176	17	3,131	140,932
APACHE	214	1,561	1,002	37	11,956	71	902	5,679	76	96	4,222	877	2,727	0	431	29,851
COCONINO	277	1,481	1,387	136	8,675	374	1,079	4,372	42	127	4,987	1,000	3,119	14	464	27,534
MOHAVE	444	2,280	2,851	363	12,235	357	1,439	7,583	181	207	8,827	1,693	5,431	2	1,644	45,537
NAVAJO	333	2,377	1,699	142	13,302	194	1,284	6,903	68	112	5,900	1,204	3,899	1	592	38,010
CENTRAL	1,728	9,312	8,790	1,567	47,586	3,811	6,030	21,101	285	597	30,722	6,385	19,591	37	4,525	162,067
GILA	110	599	684	100	4,942	104	484	2,484	38	41	1,953	461	1,353	2	344	13,699
LA PAZ	34	239	241	22	1,391	131	146	736	4	14	671	115	399	0	168	4,311
PINAL	575	4,038	2,617	610	20,118	1,198	2,294	8,379	82	217	11,119	2,214	6,430	15	1,372	61,278
YAVAPAI	407	1,755	2,509	525	8,079	1,068	1,176	4,773	80	118	6,349	1,638	4,170	17	1,262	33,926
YUMA	602	2,681	2,739	310	13,056	1,310	1,930	4,729	81	207	10,630	1,957	7,239	3	1,379	48,853
SOUTHERN	2,054	13,145	13,829	3,811	66,975	6,784	8,016	34,468	433	813	43,896	9,056	26,660	96	6,689	236,725
COCHISE	221	1,324	1,661	243	7,103	412	798	3,111	60	94	4,499	852	2,849	6	934	24,167
GRAHAM	102	456	450	75	2,914	27	364	1,419	24	33	1,409	364	874	1	177	8,689
GREENLEE	10	49	61	8	470	3	54	224	6	6	240	26	107	0	37	1,301
P MA	1,611	10,651	10,814	3,450	52,909	5,943	6,367	28,565	329	630	34,648	7,266	20,780	89	5,049	189,101
SANTA CRUZ	110	665	843	35	3,579	399	433	1,149	14	50	3,100	548	2,050	0	492	13,467

TABLE 7B
MEDICAL ASSISTANCE PROGRAM
RECIPIENTS

CHANGE FROM

JULY 2011

	SOBRA WOMAN 133% FPL	SOBRA CHILD	ADULT W/O CHILD 100% FPL	FOSTER CARE	1931 36% FPL	FEDERAL EMERGENCY SERVICES	INFANTS	ADULT W/O CHILD 40% FPL	MEDICAL W/SPEND DOWN	SOBRA WOMAN 100% FPL	SOBRA CHILD 100% FPL	TRANSITIONAL MEDICAL T1 - T4	1931 100% FPL	YATI	OTHER	TOTAL CASES
ARIZONA	206	(21)	(5,534)	122	9,389	1,950	427	(11,834)	(1,266)	80	1,682	345	(11)	(10)	38	(4,437)
REGION																
MARICOPA	153	37	(2,596)	75	4,755	1,620	308	(6,009)	(701)	33	1,068	438	(148)	(9)	(41)	(1,017)
NORTHERN	(9)	53	(656)	(7)	1,140	3	36	(1,481)	(190)	3	306	(50)	111	3	28	(710)
APACHE	6	29	(85)	2	241	(4)	17	(336)	(47)	(17)	(17)	(44)	28	0	(2)	(229)
COCONINO	(15)	(10)	(154)	(3)	223	8	0	(303)	(44)	18	113	(1)	61	3	(4)	(108)
MOHAVE	(5)	37	(270)	0	427	1	1	(514)	(69)	11	113	(23)	13	0	25	(253)
NAVAJO	5	(3)	(147)	(6)	249	(2)	18	(328)	(30)	(9)	97	18	9	0	9	(120)
CENTRAL	67	(47)	(984)	17	1,898	79	40	(1,330)	(144)	17	93	(140)	66	(1)	31	(338)
GILA	15	(50)	(76)	0	127	2	4	(131)	(18)	6	49	5	19	(1)	(4)	(53)
LA PAZ	3	(14)	(17)	3	24	(2)	(1)	(46)	(1)	3	26	(4)	23	0	(3)	(6)
PINAL	14	(65)	(317)	(10)	723	14	(8)	(495)	(31)	8	(55)	(7)	(78)	0	5	(302)
YAVAPAI	(6)	45	(247)	15	195	15	23	(404)	(57)	1	78	(45)	34	0	20	(333)
YUMA	41	37	(327)	9	829	50	22	(254)	(37)	(1)	(5)	(89)	68	0	13	356
SOUTHERN	(5)	(64)	(1,298)	37	1,596	248	43	(3,014)	(231)	27	215	97	(40)	(3)	20	(2,372)
COCHISE	4	28	(175)	(4)	156	6	10	(211)	(32)	(4)	2	(13)	33	1	9	(190)
GRAHAM	(13)	(17)	(30)	3	70	6	7	(83)	(11)	9	10	13	(21)	0	(5)	(62)
GREENLEE	(2)	(7)	(5)	0	35	1	0	(11)	(4)	(2)	(10)	(3)	7	0	2	1
P MA	4	(41)	(1,034)	37	1,212	242	33	(2,654)	(177)	18	226	127	(80)	(4)	21	(2,070)
SANTA CRUZ	2	(27)	(54)	1	123	(7)	(7)	(55)	(7)	6	(13)	(27)	21	0	(7)	(51)

TABLE 7C
MEDICAL ASSISTANCE PROGRAM
RECIPIENTS

CHANGE FROM
AUGUST 2010

	SOBRA WOMAN 133% FPL	SOBRA CHILD	ADULT W/O CHILD 100% FPL	FOSTER CARE	1931 36% FPL	FEDERAL EMERGENCY SERVICES	INFANTS	ADULT W/O CHILD 40% FPL	MEDICAL W/SPEND DOWN	SOBRA WOMAN 100% FPL	SOBRA CHILD 100% FPL	TRANSITIONAL MEDICAL T1 - T4	3E 1931 100% FPL	YATI	OTHER	TOTAL CASES
ARIZONA	678	1,729	(3,206)	1,221	23,980	(1,279)	(1,807)	(5,933)	(5,148)	518	12,917	(510)	6,000	(19)	2,208	31,349
REGION																
MARICOPA	641	1,539	(1,168)	924	16,289	(677)	(1,416)	(2,658)	(2,888)	399	8,731	(877)	3,356	(14)	1,270	23,451
NORTHERN	70	46	(434)	45	1,066	(234)	(215)	(952)	(702)	15	618	(338)	484	(2)	203	(330)
APACHE	5	31	(28)	(3)	283	(26)	(63)	(53)	(72)	(9)	(71)	61	24	0	40	119
COCONINO	2	40	(171)	9	13	27	(8)	(370)	(136)	23	(30)	(130)	68	4	50	(609)
MOHAVE	54	(60)	(192)	46	468	(163)	(68)	(572)	(319)	32	546	(205)	301	(2)	88	(46)
NAVAJO	9	35	(43)	(7)	302	(72)	(76)	43	(175)	(31)	173	(64)	91	(4)	25	206
CENTRAL	(32)	(162)	(709)	69	3,245	(486)	47	(900)	(844)	7	1,579	306	1,417	0	207	3,744
GILA	(11)	(109)	(78)	(1)	306	(30)	(52)	(180)	(58)	1	44	79	46	2	(3)	(44)
LA PAZ	(17)	(4)	(29)	5	94	0	16	(132)	(18)	5	(57)	(86)	(12)	0	14	(221)
PINAL	(18)	37	(175)	2	1,938	(48)	101	180	(301)	33	926	365	632	1	117	3,790
YAVAPAI	5	(73)	(195)	60	645	(158)	(39)	(393)	(244)	(1)	119	4	223	0	(3)	(50)
YUMA	9	(13)	(232)	3	262	(250)	21	(375)	(223)	(31)	547	(56)	528	(3)	82	269
SOUTHERN	(1)	306	(895)	183	3,380	118	(223)	(1,423)	(714)	97	1,989	399	743	(3)	528	4,484
COCHISE	(15)	54	(22)	1	190	(32)	(30)	(141)	(96)	16	255	(140)	78	1	79	198
GRAHAM	(5)	(45)	(81)	5	170	(24)	23	33	(33)	8	7	23	(6)	(1)	22	96
GREENLEE	(10)	(5)	(13)	0	25	(3)	0	32	0	2	11	(31)	(21)	(2)	0	(15)
P MA	22	297	(735)	171	2,871	279	(201)	(1,401)	(551)	77	1,638	588	562	0	416	4,033
SANTA CRUZ	7	5	(44)	6	124	(102)	(15)	54	(34)	(6)	78	(41)	130	(1)	11	172

CHART 7

MEDICAL ASSISTANCE PROGRAM

COMPARISON OF RECIPIENTS

FOR 1999, 2000, 2001, 2002, 2003, 2004, 2005, 2006, 2007, 2008, 2009, 2010, & 2011

Total Recipients

