



---

DEPARTMENT OF ECONOMIC SECURITY

---

*Your Partner For A Stronger Arizona*

State of Arizona

Department of Economic Security

Family Assistance Administration

Statistical Bulletin

October, 2011

Phone: (602) 542-3678

<https://www.azdes.gov/appreports.aspx>

\*\*\*\* STATISTICAL BULLETIN \*\*\*\*  
ARIZONA DEPARTMENT OF ECONOMIC SECURITY  
FAMILY ASSISTANCE ADMINISTRATION  
BOX 6123, PHOENIX, ARIZONA 85005  
PHONE (602) 542-3678

OCTOBER 2011

THIS ISSUE OF THE STATISTICAL BULLETIN COMPARES SEPTEMBER 2011 DATA FOR EACH OF THE INDICATED PROGRAMS WITH THE INFORMATION FOR AUGUST 2011 AND SEPTEMBER 2010. STATEWIDE SUMMARIES OF ACTIVITY WITHIN EACH OF THE SPECIFIC PROGRAMS FOR THIS REPORT PERIOD ARE DISCUSSED BELOW. THE TABLES COMPARE CURRENT AND PRIOR MONTH DATA. DISTRICT AND COUNTY COMPARISONS ARE PROVIDED WITHIN THIS BULLETIN

TANF SUMMARY

COMPARING TO AUGUST 2011, SEPTEMBER 2011 CASES INCREASED BY 9 (0.05%) TO 16,750. RECIPIENTS INCREASED BY 5 (0.01%) TO 37,798. PAYMENTS DECREASED BY \$1,457 (0.04%) TO \$3,492,940. AVERAGE PAYMENT PER CASE DECREASED BY \$0.20 (0.10%) TO \$0.00. PAYMENT PER RECIPIENT DECREASED BY \$0.05 (0.05%) TO \$92.41.

COMPARING TO SEPTEMBER 2010, SEPTEMBER 2011 CASES DECREASED BY 2,376 (12.42%). RECIPIENTS DECREASED BY 5,513 (12.73%). TOTAL PAYMENTS DECREASED BY \$595,607 (14.57%). THE AVERAGE PAYMENT PER CASE DECREASED BY \$5.24 (2.45%). THE AVERAGE PAYMENT PER RECIPIENT DECREASED BY \$1.99 (2.11%).

CASH ASSISTANCE (CA)

COMPARING TO AUGUST 2011, SEPTEMBER 2011 CASES DECREASED BY 41 (0.26%) TO 15,689. RECIPIENTS DECREASED BY 45 (0.13%) TO 34,855. PAYMENTS DECREASED BY \$2,356 (0.07%) TO \$3,325,498. AVERAGE PAYMENT PER CASE INCREASED BY \$0.40 (0.19%) TO \$211.96. PAYMENT PER RECIPIENT INCREASED BY \$0.06 (0.06%) TO \$95.41.

COMPARING TO SEPTEMBER 2010, SEPTEMBER 2011 CASES DECREASED BY 2,346 (13.01%). RECIPIENTS DECREASED BY 5,181 (12.94%). TOTAL PAYMENTS DECREASED BY \$555,219 (14.31%). THE AVERAGE PAYMENT PER CASE DECREASED BY \$3.22 (1.50%). THE AVERAGE PAYMENT PER RECIPIENT DECREASED BY \$1.52 (1.57%).

CASH ASSISTANCE UNEMPLOYED PARENT PROGRAM (CA-UP)

COMPARING TO AUGUST 2011, SEPTEMBER 2011 CASES DECREASED BY 15 (3.59%) TO 403. RECIPIENTS DECREASED BY 65 (4.01%) TO 1,557. PAYMENTS DECREASED BY \$4,432 (3.59%) TO \$119,061. AVERAGE PAYMENT PER CASE INCREASED BY \$0.00 (0.00%) TO \$295.44. PAYMENT PER RECIPIENT INCREASED BY \$0.33 (0.44%) TO \$76.47.

COMPARING TO SEPTEMBER 2010, SEPTEMBER 2011 CASES DECREASED BY 198 (32.95%). RECIPIENTS DECREASED BY 665 (29.93%). TOTAL PAYMENTS DECREASED BY \$51,835 (30.33%). THE AVERAGE PAYMENT PER CASE INCREASED BY \$11.09 (3.90%). THE AVERAGE PAYMENT PER RECIPIENT DECREASED BY \$0.44 (0.57%).

CASH ASSISTANCE WITH GRANT UNDER \$100 (CA-MOE)

COMPARING TO AUGUST 2011, SEPTEMBER 2011 CASES INCREASED BY 59 (10.09%) TO 644. RECIPIENTS INCREASED BY 97 (7.84%) TO 1,334. PAYMENTS INCREASED BY \$5,002 (11.75%) TO \$47,560. AVERAGE PAYMENT PER CASE INCREASED BY \$1.10 (1.51%) TO \$73.85. AVERAGE PAYMENT PER RECIPIENT INCREASED BY \$1.25 (3.63%) TO \$35.65.

COMPARING TO SEPTEMBER 2010, SEPTEMBER 2011 CASES INCREASED BY 182 (39.39%). RECIPIENTS INCREASED BY 361 (37.10%). TOTAL PAYMENTS INCREASED BY \$12,036 (33.88%). THE AVERAGE PAYMENT PER CASE DECREASED BY \$3.04 (3.95%). THE AVERAGE PAYMENT PER RECIPIENT DECREASED BY \$0.86 (2.36%).

CASH ASSISTANCE UNEMPLOYED PARENT PROGRAM WITH GRANT UNDER \$100 (CA-UP-MOE) NEW PROGRAM STARTING 7/01

COMPARING TO AUGUST 2011, SEPTEMBER 2011 CASES INCREASED BY 6 (75.00%) TO 14. RECIPIENTS INCREASED BY 18 (52.94%) TO 52. PAYMENTS INCREASED BY \$329 (66.87%) TO \$821. AVERAGE PAYMENT PER CASE DECREASED BY \$2.86 (4.65%) TO \$58.64. PAYMENT PER RECIPIENT INCREASED BY \$1.32 (9.12%) TO \$15.79.

COMPARING TO SEPTEMBER 2010, SEPTEMBER 2011 CASES DECREASED BY 14 (50.00%). RECIPIENTS DECREASED BY 28 (5.69%). TOTAL PAYMENTS DECREASED BY \$589 (41.77%). THE AVERAGE PAYMENT PER CASE INCREASED BY \$8.28 (16.44%). THE AVERAGE PAYMENT PER RECIPIENT DECREASED BY \$1.84 (10.44%).

TUBERCULOSIS CONTROL PROGRAM (TC)

COMPARING TO AUGUST 2011, SEPTEMBER 2011 CASES DECREASED BY 1 (16.67%) TO 5. RECIPIENTS DECREASED BY 1 (16.67%) TO 5. PAYMENTS DECREASED BY \$104 (12.40%) TO \$735. AVERAGE PAYMENT PER CASE INCREASED BY \$68.70 (49.13%) TO \$208.53. AVERAGE PAYMENT PER RECIPIENT INCREASED BY \$7.17 (5.13%) TO \$147.00.

COMPARING TO SEPTEMBER 2010, SEPTEMBER 2011 CASES INCREASED BY 4 (400.00%). RECIPIENTS INCREASED BY 4 (400.00%). TOTAL PAYMENTS INCREASED BY \$562 (324.86%). THE AVERAGE PAYMENT PER CASE INCREASED BY \$35.53 (20.54%). THE AVERAGE PAYMENT PER RECIPIENT DECREASED BY \$26.00 (15.03%).

SUPPLEMENTAL NUTRITION ASSISTANCE PROGRAM (SNAP)

COMPARING TO AUGUST 2011, SEPTEMBER 2011 SUPPLEMENTAL NUTRITION ASSISTANCE HOUSEHOLDS INCREASED BY 2,298 (0.47%) TO 487,866. PERSONS RECEIVING SUPPLEMENTAL NUTRITION ASSISTANCE INCREASED BY 8,025 (0.71%) TO 1,131,358. TOTAL COUPON ISSUANCE INCREASED BY \$414,849 (0.29%) TO \$143,185,399. THE AVERAGE HOUSEHOLD ALLOTMENT DECREASED BY \$0.54 (0.18%) TO \$293.49. THE AVERAGE ALLOTMENT PER PERSON DECREASED BY \$0.54 (0.42%) TO \$126.56.

COMPARING TO SEPTEMBER 2010, SEPTEMBER 2011 SUPPLEMENTAL NUTRITION ASSISTANCE HOUSEHOLDS INCREASED BY 31,399 (6.88%). PERSONS RECEIVING SUPPLEMENTAL NUTRITION ASSISTANCE INCREASED BY 86,948 (8.33%). TOTAL COUPON ISSUANCE INCREASED BY \$9,737,031 (7.30%). THE AVERAGE ALLOTMENT PER HOUSEHOLD INCREASED BY \$1.14 (0.39%). THE AVERAGE ALLOTMENT PER PERSON DECREASED BY \$1.21 (0.95%).

MEDICAL ASSISTANCE PROGRAM (MA) NEW TABLE INCLUDES PROP. 204 CATEGORIES

COMPARING TO AUGUST 2011, SEPTEMBER 2011 TOTAL RECIPIENTS TOTAL RECIPIENTS DECREASED BY 14,506 (1.18%). SOBRA WOMEN AT 140% FPL DECREASED BY 90 (0.78%). SOBRA CHILDREN DECREASED BY 1,782 (2.54%). ADULTS W/O CHILD AT 100% DECREASED BY 4,280 (7.33%). FOSTER CARE INCREASED BY 188 (0.00%). 1931 AT 36% FPL INCREASED BY 779 (0.00%). EMERGENCY SERVICES INCREASED BY 1,242 (2.26%). INFANTS INCREASED BY 143 (0.31%). ADULT W/O CHILD AT 140% DECREASED BY 10,639 (6.50%). MEDICAL W/SPEND DOWN DECREASED BY 1,197 (53.15%). SOBRA WOMAN AT 100% INCREASED BY 30 (0.70%). SOBRA CHILD AT 100% INCREASED BY 738 (0.31%). TRANSITIONAL MEDICAL INCREASED BY 1,478 (3.45%). 1931 AT 100% DECREASED BY 993 (0.78%). YATI INCREASED BY 7 (2.12%). ALL OTHER CATEGORIES DECREASED BY 130 (0.44%).

COMPARING TO SEPTEMBER 2010, SEPTEMBER 2011 TOTAL RECIPIENTS TOTAL RECIPIENTS INCREASED BY 19,955 (1.67%). SOBRA WOMEN AT 140% FPL INCREASED BY 449 (4.09%). SOBRA CHILDREN DECREASED BY 163 (0.24%). ADULTS W/O CHILD AT 100% DECREASED BY 7,866 (12.69%). FOSTER CARE INCREASED BY 1,429 (11.85%). 1931 AT 36% FPL INCREASED BY 27,003 (7.98%). EMERGENCY SERVICES INCREASED BY 3,007 (5.64%). INFANTS DECREASED BY 1,267 (2.66%). ADULT W/O CHILD AT 140% DECREASED BY 17,714 (10.38%). MEDICAL W/SPEND DOWN DECREASED BY 6,221 (85.50%). SOBRA WOMAN AT 100% INCREASED BY 610 (16.57%). SOBRA CHILD AT 100% INCREASED BY 13,402 (5.89%). TRANSITIONAL MEDICAL INCREASED BY 972 (2.24%). 1931 AT 100% INCREASED BY 4,306 (3.53%). YATI DECREASED BY 21 (5.87%). ALL OTHER CATEGORIES INCREASED BY 2,029 (7.32%).

# TANF SUMMARY

## TABLES 1, 1A, 1B, & 1C: ARIZONA 1/

	OCTOBER 2011							CHANGE FROM			OCTOBER 2010		
	FAMILIES (CASES)	PERSONS (RECIP.)	ADULTS	CHILDREN	TOTAL PAYMENTS	AVERAGE	AVERAGE	FAMILIES (CASES)	PERSONS (RECIP.)	TOTAL PAYMENTS	FAMILIES (CASES)	PERSONS (RECIP.)	TOTAL PAYMENTS
						PAYMENT/ CASE	PAYMENT/ RECIP.						
ARIZONA	16,967	38,170	10,114	28,056	3,550,818	209.28	93.03	217	372	57,878	(2,908)	(6,871)	(684,361)
REGION													
MARICOPA	10,165	23,252	5,989	17,263	2,127,307	209.28	91.49	110	196	31,167	(2,140)	(5,318)	(508,716)
NORTHERN	1,037	2,358	683	1,675	214,076	206.44	90.79	26	55	7,911	(85)	(115)	(16,691)
APACHE	34	89	30	59	7,957	234.03	89.40	3	7	1,025	(10)	8	(504)
COCONINO	64	159	47	112	13,634	213.03	85.75	0	8	806	(18)	(34)	(4,345)
MOHAVE	610	1,314	366	948	123,437	202.36	93.94	26	49	5,657	(28)	(26)	(6,385)
NAVAJO	329	796	240	556	69,048	209.87	86.74	(3)	(9)	423	(29)	(63)	(5,457)
CENTRAL	1,989	4,330	1,190	3,140	413,172	207.73	95.42	26	39	9,145	(409)	(999)	(107,191)
GILA	436	930	325	605	103,495	237.37	111.28	3	1	1,361	(105)	(282)	(30,803)
LA PAZ	62	131	37	94	11,833	190.85	90.33	(1)	(10)	(514)	(33)	(101)	(8,299)
PINAL	752	1,612	392	1,220	148,501	197.47	92.12	13	23	3,272	(206)	(532)	(49,439)
YAVAPAI	284	589	129	460	55,350	194.89	93.97	2	6	738	(15)	(4)	(3,958)
YUMA	455	1,068	307	761	93,993	206.58	88.01	9	19	4,288	(50)	(80)	(14,692)
SOUTHERN	3,776	8,230	2,252	5,978	796,263	210.87	96.75	55	82	9,655	(274)	(439)	(51,763)
COCHISE	342	688	157	531	70,723	206.79	102.80	19	35	4,596	(18)	(7)	(2,253)
GRAHAM	231	486	161	325	53,523	231.70	110.13	5	13	9	18	85	5,361
GREENLEE	15	32	10	22	3,297	219.80	103.03	3	4	608	(4)	(11)	(269)
PIMA	3,080	6,772	1,870	4,902	645,737	209.65	95.35	22	13	3,074	(257)	(507)	(54,226)
SANTA CRUZ	108	252	54	198	22,983	212.81	91.20	6	17	1,368	(13)	1	(376)

1/EXCLUDES: PRIOR MONTH NET TOTALS OF 944 CASES; 2,382 RECIPIENTS; \$152,678.

GRANT DIVERSION TOTALS OF: 2,121 CASES; \$1,631,213.

ZERO PAY TOTALS OF 4,942 CASES; 14,589 RECIPIENTS.

RRP: 148 CASES; 209 RECIPIENTS; \$28,845.

1/INCLUDES: TANF CHILD ONLY: 9,055 CASES; 15,355 RECIPIENTS; \$1,171,209.

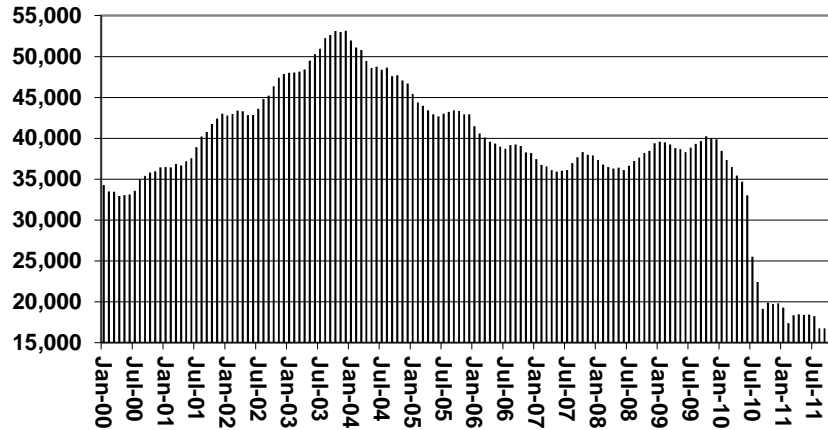
	CURRENT MO. CASES	CURRENT MO. RECIP.	CURRENT MO. DOLLARS	PRIOR MO. CASES	PRIOR MO. RECIP	PRIOR MO. DOLLARS
PASQUAYAQUI	275	777	\$83,121	21	64	\$4,434
WM APACHE	0	0	\$0	0	0	\$0
SALT RIVER	84	265	\$24,884	6	17	\$890
SAN CARLOS	463	1,002	\$114,433	29	68	\$3,760
HOPI	117	321	\$26,030	7	23	\$1,171
<b>TOTAL</b>	<b>939</b>	<b>2,365</b>	<b>\$248,468</b>	<b>63</b>	<b>172</b>	<b>\$10,255</b>

# TANF SUMMARY

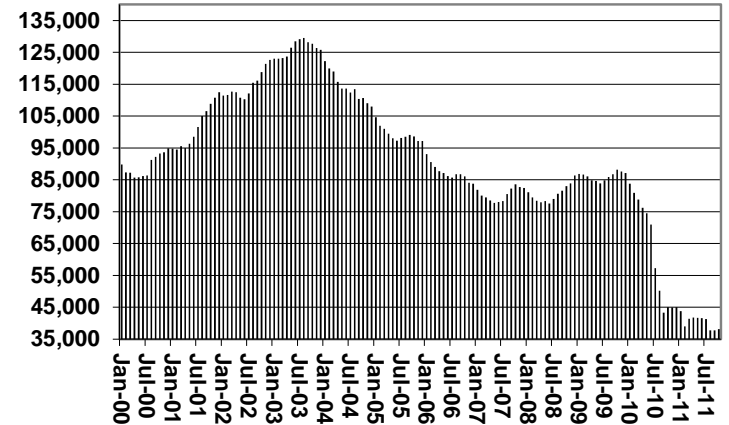
TABLES 1, 1A, 1B, & 1C

COMPARISON OF CASES, RECIPIENTS, PAYMENTS & AVERAGE PAYMENTS  
FOR 2000, 2001, 2002, 2003, 2004, 2005, 2006, 2007, 2008, 2009, 2010, & 2011

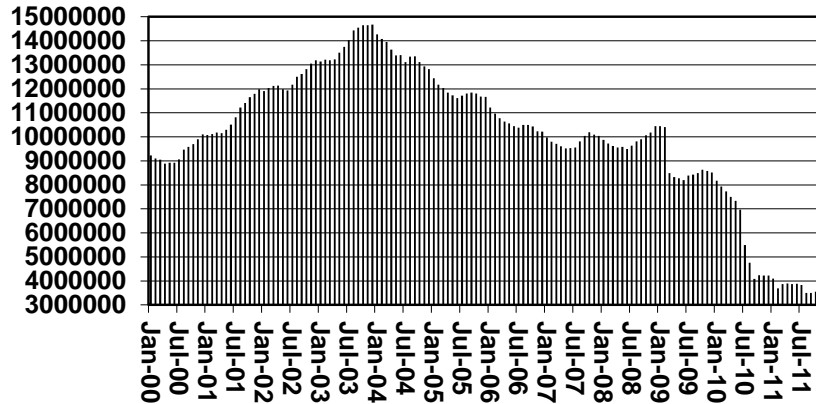
### Cases



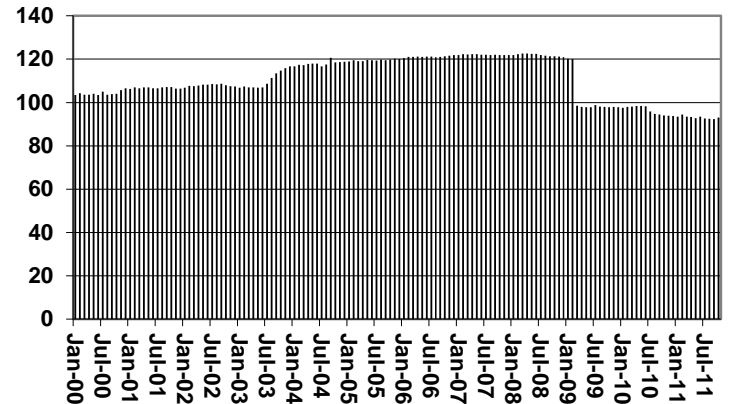
### Recipients



### Payments



### Average Payments Per Recipient



**TABLE 1**  
**CASH ASSISTANCE: ARIZONA 1/**

	OCTOBER 2011							CHANGE FROM			OCTOBER 2010		
	FAMILIES (CASES)	(RECIP.)	ADULTS	CHILDREN	TOTAL PAYMENTS	AVERAGE PAYMENT/ CASE	AVERAGE PAYMENT/ RECIP.	FAMILIES (CASES)	PERSONS (RECIP.)	TOTAL PAYMENTS	FAMILIES (CASES)	PERSONS (RECIP.)	TOTAL PAYMENTS
ARIZONA	15,911	35,180	8,994	26,186	3,378,946	212.37	96.05	222	325	53,448	(2,790)	(6,434)	(640,579)
REGION													
MARICOPA	9,556	21,514	5,366	16,148	2,028,325	212.26	94.28	124	190	30,201	(1,972)	(4,722)	(456,666)
NORTHERN	963	2,140	590	1,550	201,510	209.25	94.16	28	38	7,349	(99)	(196)	(22,720)
APACHE	28	66	19	47	6,053	216.18	91.71	2	3	480	(16)	(15)	(2,408)
COCONINO	59	148	42	106	12,961	219.68	87.57	2	10	618	(22)	(43)	(4,897)
MOHAVE	571	1,196	317	879	116,619	204.24	97.51	36	58	6,956	(22)	(38)	(8,221)
NAVAJO	305	730	212	518	65,877	215.99	90.24	(12)	(33)	(705)	(39)	(100)	(7,194)
CENTRAL	1,868	3,996	1,062	2,934	394,823	211.36	98.80	8	(9)	2,850	(344)	(907)	(86,542)
GILA	430	917	321	596	102,860	239.21	112.17	(1)	(5)	1,058	(107)	(287)	(30,949)
LA PAZ	56	112	30	82	10,815	193.13	96.56	(1)	(13)	(507)	(26)	(85)	(7,139)
PINAL	697	1,448	333	1,115	139,649	200.36	96.44	10	9	2,299	(211)	(535)	(48,454)
YAVAPAI	261	534	108	426	52,787	202.25	98.85	(8)	(13)	(146)	(28)	(45)	(5,501)
YUMA	424	985	270	715	88,712	209.23	90.06	22	38	3,671	(56)	(96)	(15,815)
SOUTHERN	3,524	7,530	1,976	5,554	754,288	214.04	100.17	48	81	9,523	(291)	(468)	(53,335)
COCHISE	327	653	145	508	68,595	209.77	105.05	18	34	4,397	(20)	(13)	(3,018)
GRAHAM	226	476	156	320	52,851	233.85	111.03	4	11	(271)	17	84	5,260
GREENLEE	15	32	10	22	3,297	219.80	103.03	3	4	608	(2)	(7)	(103)
PIMA	2,854	6,131	1,615	4,516	607,112	212.72	99.02	19	23	3,570	(274)	(537)	(55,277)
SANTA CRUZ	102	238	50	188	22,433	219.93	94.26	4	9	1,219	(12)	5	(197)

1/EXCLUDES: PRIOR MONTH NET TOTALS OF: 428 CASES; 1,076 RECIPIENTS; \$109,483.  
GRANT DIVERSION TOTALS OF: 2,121 CASES; \$1,631,213.  
ZERO PAY TOTALS OF 4,941 CASES; 14,584 RECIPIENTS.

CASES WITH GRANT UNDER \$100 (SEE TABLE 1B).

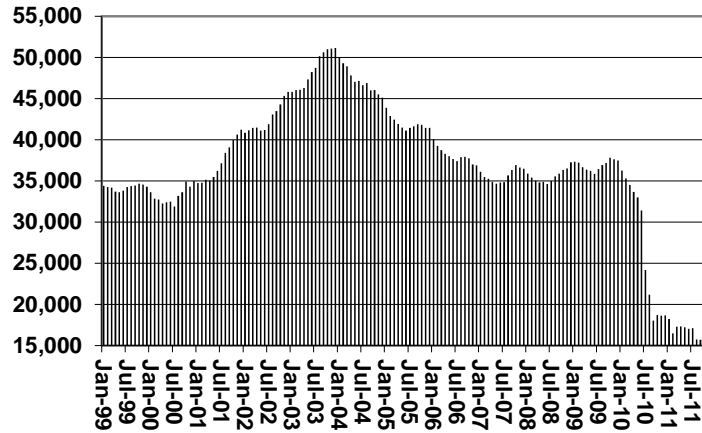
	CURRENT MO. CASES	CURRENT MO. RECIP.	CURRENT MO. DOLLARS	PRIOR MO. CASES	PRIOR MO. RECIP.	PRIOR MO. DOLLARS
PASQUA/YAQUI	264	735	\$79,103	19	56	\$3,928
WM APACHE	0	0	\$0	0	0	\$0
SALT RIVER	84	265	\$24,884	6	17	\$890
SAN CARLOS	463	1,002	\$114,433	29	68	\$3,760
HOPI	117	321	\$26,030	7	23	\$1,171
<b>TOTAL</b>	<b>928</b>	<b>2,323</b>	<b>\$244,450</b>	<b>61</b>	<b>164</b>	<b>\$9,749</b>

# CHART 1

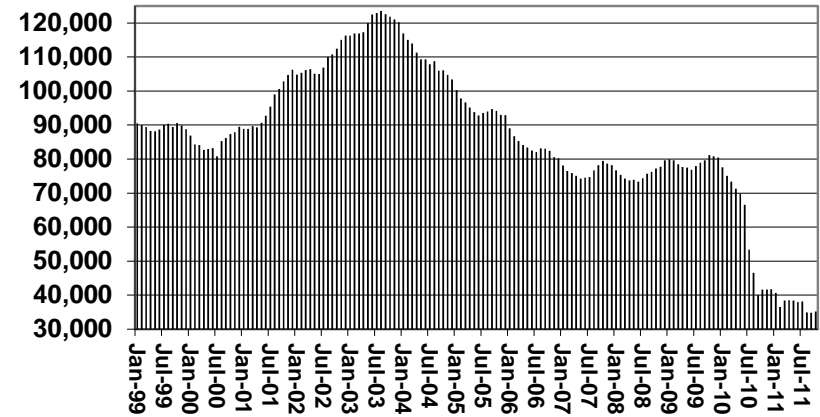
## CASH ASSISTANCE PROGRAM

### COMPARISON OF CASES, RECIPIENTS, PAYMENTS & AVERAGE PAYMENTS FOR 1999, 2000, 2001, 2002, 2003, 2004, 2005, 2006, 2007, 2008, 2009, 2010, & 2011

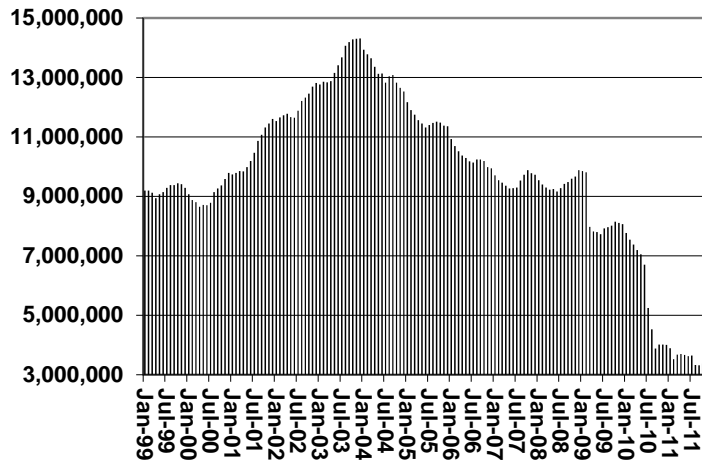
Cases



Recipients



Payments



Average Payment Per Recipient

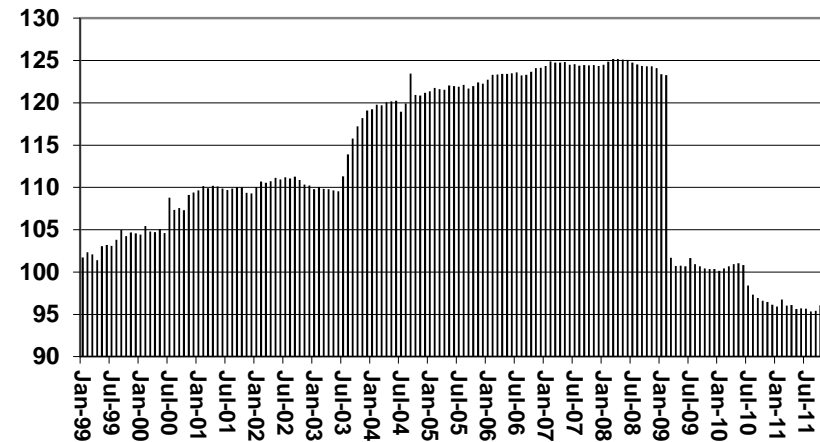


TABLE 1A  
CA-UP

CASH ASSISTANCE UNEMPLOYED PARENT PROGRAM: ARIZONA 1/

	OCTOBER 2011							CHANGE FROM			OCTOBER 2010		
	FAMILIES (CASES)	PERSONS (RECIP.)	ADULTS	CHILDREN	TOTAL PAYMENTS	AVERAGE PAYMENT/ CASE	AVERAGE PAYMENT/ RECIP.	FAMILIES (CASES)	PERSONS (RECIP.)	TOTAL PAYMENTS	FAMILIES (CASES)	PERSONS (RECIP.)	TOTAL PAYMENTS
ARIZONA	416	1,637	760	877	122,967	295.59	75.12	13	80	3,906	(218)	(654)	(52,447)
REGION													
MARICOPA	230	931	425	506	70,131	304.92	75.33	2	42	1,973	(219)	(690)	(56,987)
NORTHERN	32	123	60	63	9,283	290.09	75.47	2	7	571	16	71	5,599
APACHE	6	23	11	12	1,837	306.17	79.87	2	5	555	6	23	1,837
COCONINO	2	6	3	3	405	202.50	67.50	1	3	230	2	6	405
MOHAVE	16	64	31	33	4,969	310.56	77.64	(4)	(11)	(1,008)	3	20	1,958
NAVAJO	8	30	15	15	2,072	259.00	69.07	3	10	794	5	22	1,399
CENTRAL	46	179	84	95	12,959	281.72	72.40	7	23	1,411	(13)	(42)	(2,832)
GILA	1	4	2	2	211	211.00	52.75	0	0	0	0	0	(124)
LA PAZ	2	10	4	6	704	352.00	70.40	0	0	0	(3)	(9)	(914)
PINAL	25	99	44	55	6,826	273.04	68.95	7	23	1,411	(10)	(33)	(1,794)
YAVAPAI	5	16	8	8	1,344	268.80	84.00	1	3	254	2	12	796
YUMA	13	50	26	24	3,874	298.00	77.48	4	18	1,399	(1)	9	552
SOUTHERN	108	404	191	213	30,594	283.28	75.73	(3)	(13)	(1,702)	(3)	(14)	425
COCHISE	4	16	8	8	1,340	335.00	83.75	0	0	66	2	8	880
GRAHAM	1	4	2	2	335	0.00	0.00	1	4	335	0	1	57
GREENLEE	0	0	0	0	0	0.00	0.00	0	0	0	0	0	0
PIMA	102	381	180	201	28,803	282.38	75.60	(5)	(20)	(2,219)	(6)	(26)	(628)
SANTA CRUZ	1	3	1	2	116	116.00	0.00	1	3	116	1	3	116

1/EXCLUDES: PRIOR MONTH NET TOTALS OF: 53 CASES; 231 RECIPIENTS; \$15,496.  
GRANT DIVERSION TOTALS OF: 0 CASES; \$0.  
ZERO PAY TOTALS OF 1 CASES; 5 RECIPIENTS.

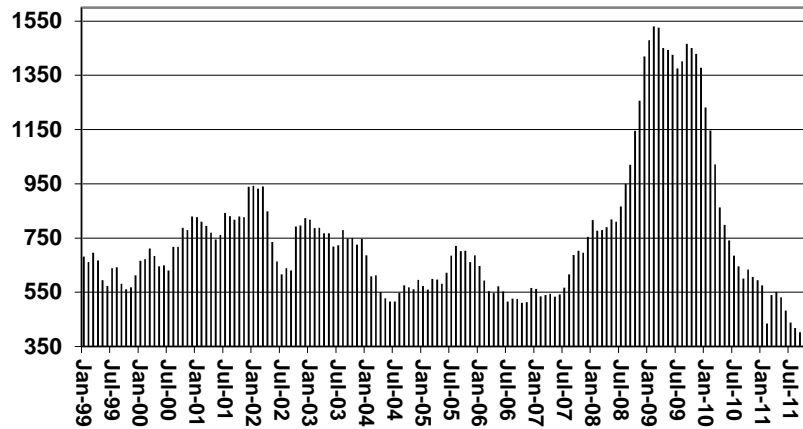
CASES WITH GRANT UNDER \$100 (SEE TABLE 1C).

	CURRENT MO. CASES	CURRENT MO. RECIP.	CURRENT MO. DOLLARS	PRIOR MO. CASES	PRIOR MO. RECIP.	PRIOR MO. DOLLARS
PASQUAY/AQUI	11	42	\$4,018	2	8	\$506
WM APACHE	0	0	\$0	0	0	\$0
SALT RIVER	0	0	\$0	0	0	\$0
SAN CARLOS	0	0	\$0	0	0	\$0
HOPI	0	0	\$0	0	0	\$0
TOTAL	11	42	\$4,018	2	8	\$506

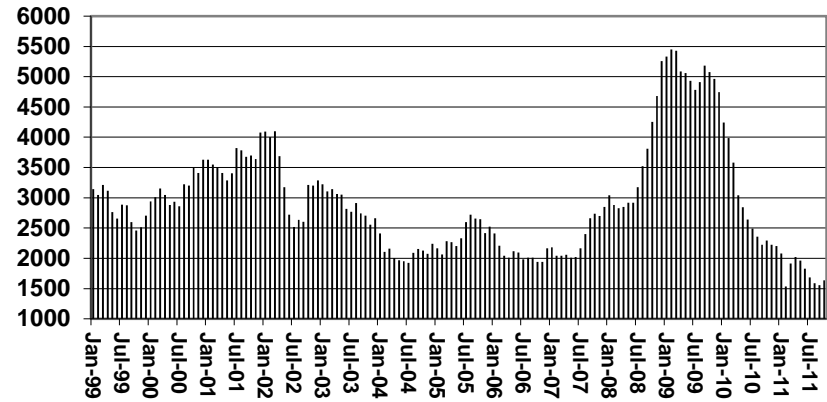
# CHART 1A

## CASH ASSISTANCE UNEMPLOYED PARENT PROGRAM COMPARISON OF CASES, RECIPIENTS, PAYMENTS & AVERAGE PAYMENTS FOR 1999, 2000, 2001, 2002, 2003, 2004, 2005, 2006, 2007, 2008, 2009, 2010, & 2011

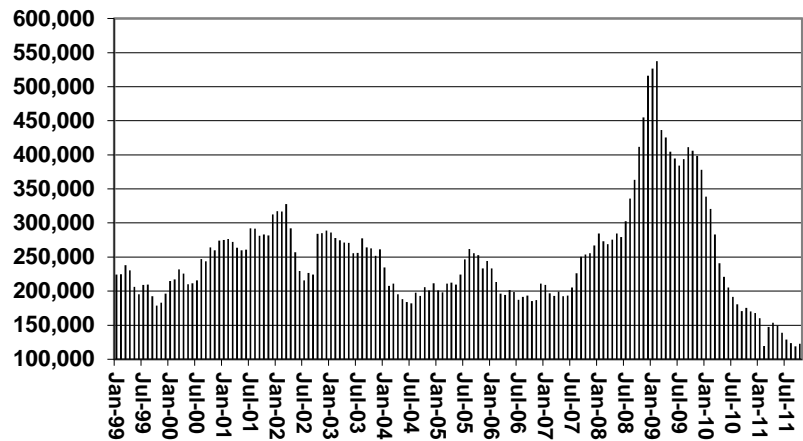
**Cases**



**Recipients**



**Payments**



**Average Payment Per Recipient**

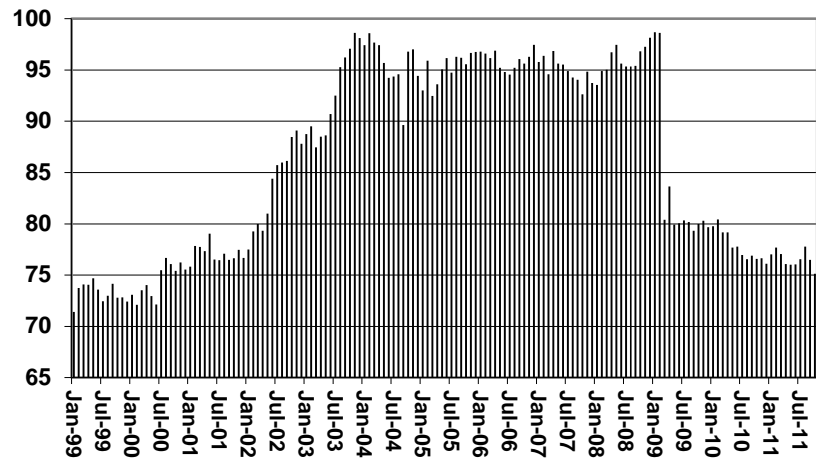




TABLE 1B 1/

CASH ASSISTANCE: ARIZONA  
CASES WITH GRANT UNDER \$100

	OCTOBER 2011							CHANGE FROM			OCTOBER 2010		
					AVERAGE	AVERAGE	SEPTEMBER 2011			OCTOBER 2010			
	FAMILIES (CASES)	PERSONS (RECIP.)	ADULTS	CHILDREN	TOTAL PAYMENTS	PAYMENT/ CASE	PAYMENT/ RECIP.	FAMILIES (CASES)	PERSONS (RECIP.)	TOTAL PAYMENTS	FAMILIES (CASES)	PERSONS (RECIP.)	TOTAL PAYMENTS
ARIZONA	629	1,317	344	973	48,244	76.70	36.63	(15)	(17)	684	115	248	9,431
REGION													
MARICOPA	372	786	188	598	28,457	76.50	36.20	(17)	(29)	(990)	63	117	5,551
NORTHERN	40	87	29	58	3,158	78.95	36.30	(6)	2	(134)	(1)	11	502
APACHE	0	0	0	0	67	0.00	0.00	(1)	(1)	(10)	0	0	67
COCONINO	3	5	2	3	268	89.33	53.60	(3)	(5)	(42)	2	3	147
MOHAVE	22	51	16	35	1,786	81.18	35.02	(7)	(1)	(354)	(7)	(2)	12
NAVAJO	15	31	11	20	1,037	69.13	33.45	5	9	272	4	10	276
CENTRAL	74	153	44	109	5,340	72.16	34.90	(6)	(14)	(223)	32	74	2,172
GILA	5	9	2	7	424	84.80	47.11	4	6	303	2	5	270
LA PAZ	4	9	3	6	314	78.50	34.89	0	3	(7)	(4)	(7)	(246)
PINAL	29	63	15	48	1,976	68.14	31.37	(3)	(6)	(389)	15	37	777
YAVAPAI	18	39	13	26	1,219	67.72	31.26	10	20	652	11	29	747
YUMA	18	33	11	22	1,407	78.17	42.64	(17)	(37)	(782)	8	10	624
SOUTHERN	143	291	83	208	11,289	78.94	38.79	14	24	2,031	21	46	1,206
COCHISE	11	19	4	15	788	71.64	41.47	1	1	133	0	(2)	(115)
GRAHAM	4	6	3	3	337	84.25	56.17	0	(2)	(55)	1	0	44
GREENLEE	0	0	0	0	0	0.00	0.00	0	0	0	(2)	(4)	(166)
PIMA	123	255	73	182	9,730	79.11	38.16	12	20	1,920	24	59	1,738
SANTA CRUZ	5	11	3	8	434	86.80	39.45	1	5	33	(2)	(7)	(295)

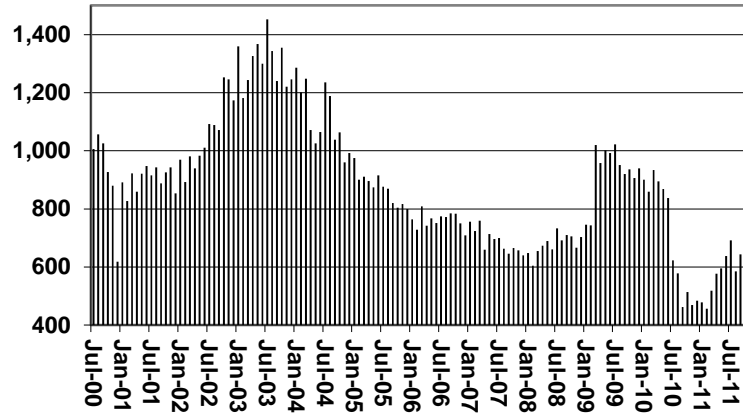
EXCLUDES: PRIOR MONTH NET TOTALS OF 445 CASES; 1,015 RECIPIENTS; \$26,644.

# CHART 1B

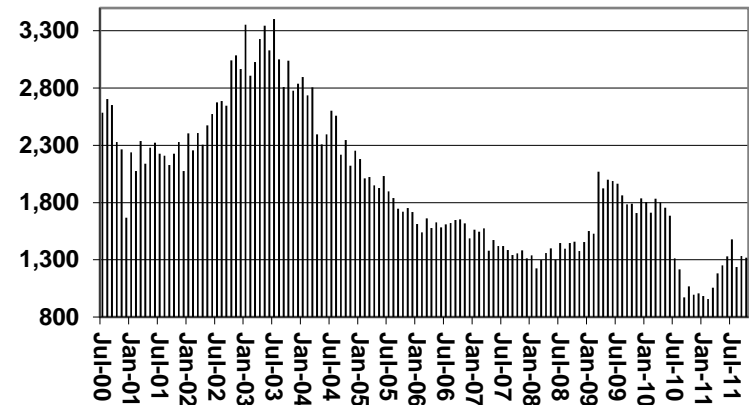
## CASH ASSISTANCE PROGRAM CASES WITH GRANT UNDER \$100

FOR 1999, 2000, 2001, 2002, 2003, 2004, 2005, 2006, 2007, 2008, 2009, 2010, & 2011

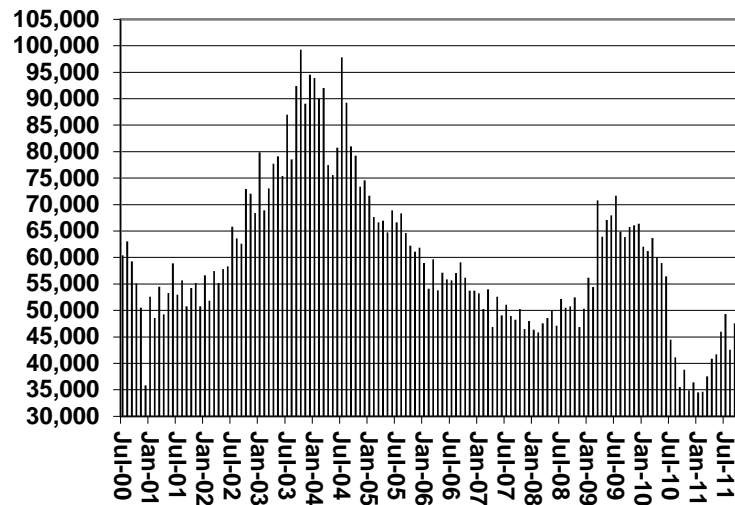
Cases



Recipients



Payments



Average Payment Per Recipient

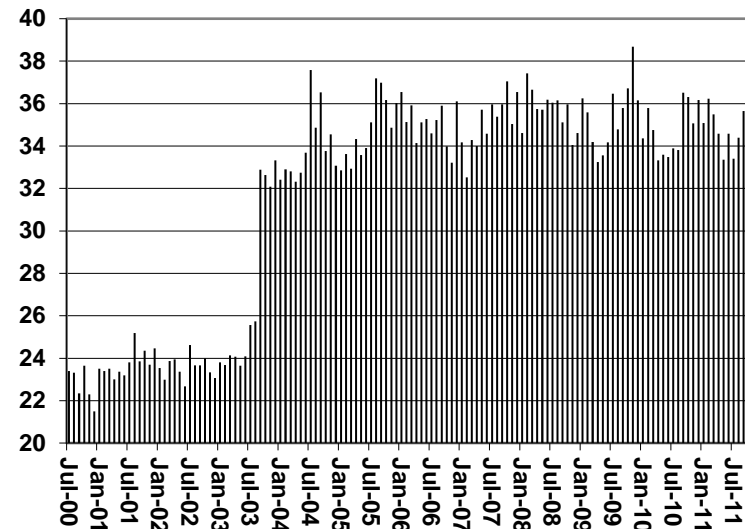


TABLE 1C 1/

CASH ASSISTANCE UNEMPLOYED PARENT PROGRAM: ARIZONA  
 CASES WITH GRANT UNDER \$100

	OCTOBER 2011							CHANGE FROM			OCTOBER 2010		
	FAMILIES (CASES)		PERSONS (RECIP.)		TOTAL PAYMENTS	AVERAGE PAYMENT/ CASE	AVERAGE PAYMENT/ RECIP.	FAMILIES (CASES)	PERSONS (RECIP.)	TOTAL PAYMENTS	FAMILIES (CASES)	PERSONS (RECIP.)	TOTAL PAYMENTS
			ADULTS	CHILDREN									
ARIZONA	11	36	16	20	661	60.09	18.36	(3)	(16)	(160)	(15)	(31)	(766)
REGION													
MARICOPA	7	21	10	11	394	56.29	18.76	1	(7)	(17)	(12)	(23)	(614)
NORTHERN	2	8	4	4	125	62.50	15.63	2	8	125	(1)	(1)	(72)
APACHE	0	0	0	0	0	0.00	0.00	0	0	0	0	0	0
COCONINO	0	0	0	0	0	0.00	0.00	0	0	0	0	0	0
MOHAVE	1	3	2	1	63	63.00	21.00	1	3	63	(2)	(6)	(134)
NAVAJO	1	5	2	3	62	62.00	12.40	1	5	62	1	5	62
CENTRAL	1	2	0	2	50	50.00	25.00	(2)	(7)	(71)	(1)	(4)	(21)
GILA	0	0	0	0	0	0.00	0.00	0	0	0	0	0	0
LA PAZ	0	0	0	0	0	0.00	0.00	0	0	0	0	0	0
PINAL	1	2	0	2	50	50.00	25.00	(1)	(3)	(49)	0	(1)	32
YAVAPAI	0	0	0	0	0	0.00	0.00	(1)	(4)	(22)	0	0	0
YUMA	0	0	0	0	0	0.00	0.00	0	0	0	(1)	(3)	(53)
SOUTHERN	1	5	2	3	92	92.00	18.40	(4)	(10)	(197)	(1)	(3)	(59)
COCHISE	0	0	0	0	0	0.00	0.00	0	0	0	0	0	0
GRAHAM	0	0	0	0	0	0.00	0.00	0	0	0	0	0	0
GREENLEE	0	0	0	0	0	0.00	0.00	0	0	0	0	0	0
PIMA	1	5	2	3	92	92.00	18.40	(4)	(10)	(197)	(1)	(3)	(59)
SANTA CRUZ	0	0	0	0	0	0.00	0.00	0	0	0	0	0	0

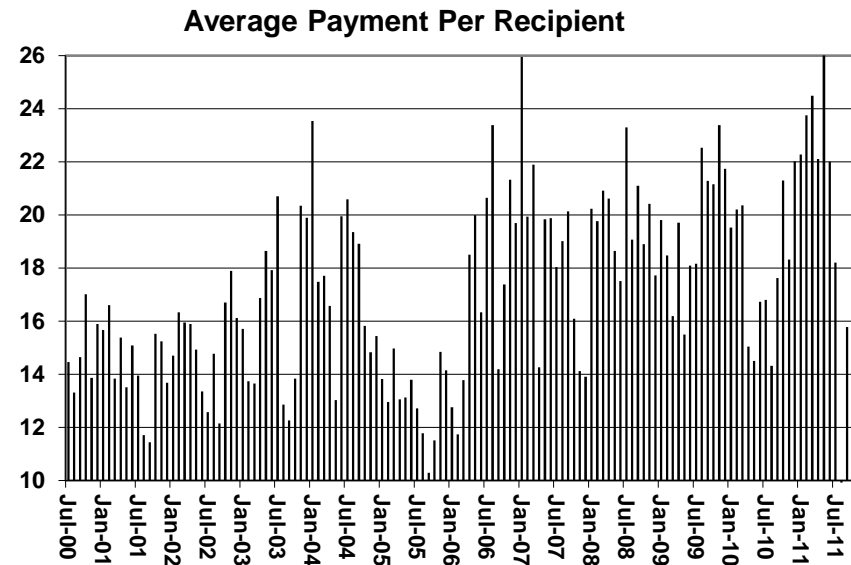
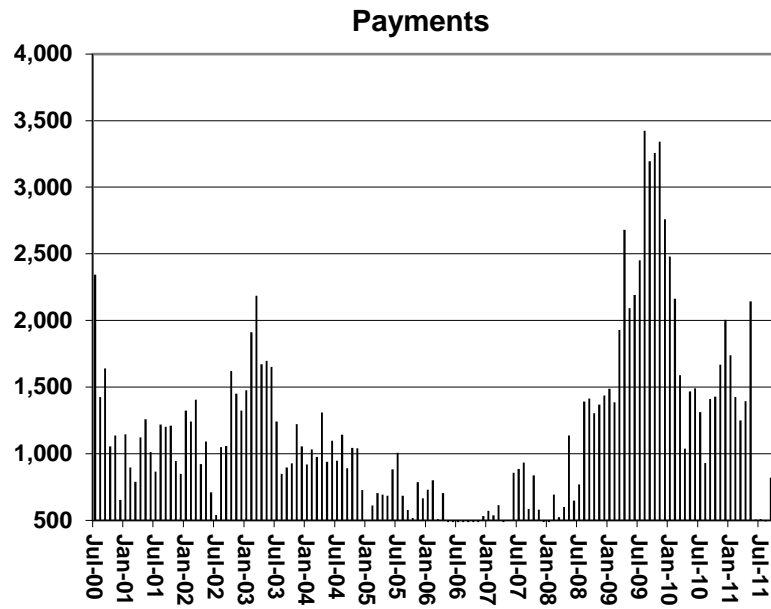
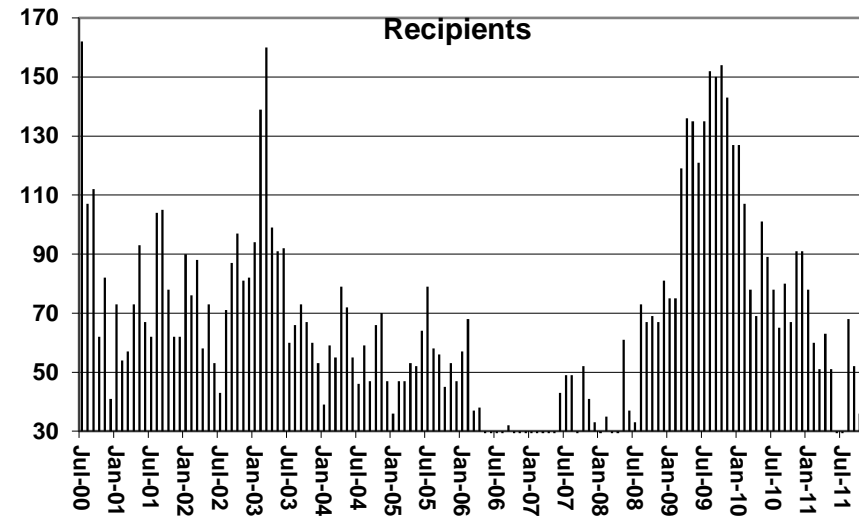
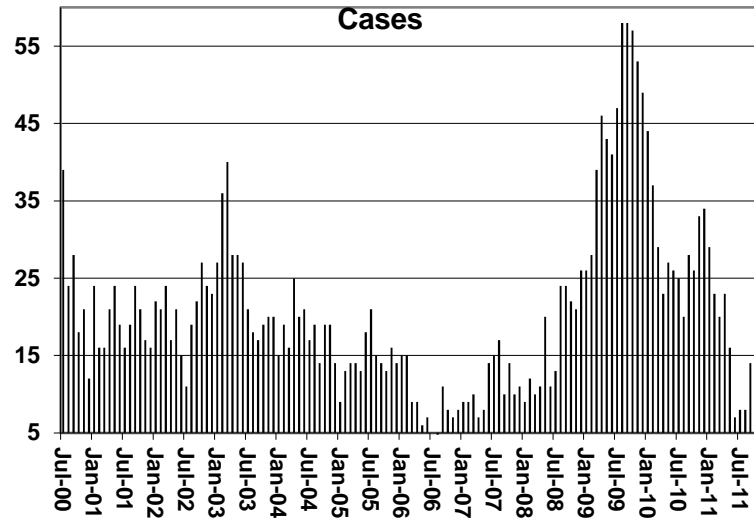
EXCLUDES: PRIOR MONTH NET TOTALS OF 18 CASES; 60 RECIPIENTS; \$1,055.

# CHART 1C

## CASH ASSISTANCE UNEMPLOYED PARENT PROGRAM

### CASES WITH GRANT UNDER \$100

FOR 1999, 2000, 2001, 2002, 2003, 2004, 2005, 2006, 2007, 2008, 2009, 2010, & 2011



**TABLE 4**  
**TUBERCULOSIS CONTROL: ARIZONA 1/**

	CHANGE FROM											
	OCTOBER 2011					SEPTEMBER 2011			OCTOBER 2010			
	NUMBER OF CASES	PERSONS (RECIP.)	TOTAL PAYMENTS	AVERAGE PAYMENT/ CASE	AVERAGE PAYMENT/ RECIP.	NUMBER OF CASES	PERSONS (RECIP.)	TOTAL PAYMENTS	NUMBER OF CASES	PERSONS (RECIP.)	TOTAL PAYMENTS	
ARIZONA	7	7	1,016	145.14	145.14	2	2	281	6	6	843	
REGION												
MARICOPA	7	7	1,016	145.14	145.14	2	2	281	6	6	843	
NORTHERN	0	0	0	0.00	0.00	0	0	0	0	0	0	
APACHE	0	0	0	0.00	0.00	0	0	0	0	0	0	
COCONINO	0	0	0	0.00	0.00	0	0	0	0	0	0	
MOHAVE	0	0	0	0.00	0.00	0	0	0	0	0	0	
NAVAJO	0	0	0	0.00	0.00	0	0	0	0	0	0	
CENTRAL	0	0	0	0.00	0.00	0	0	0	0	0	0	
GILA	0	0	0	0.00	0.00	0	0	0	0	0	0	
LA PAZ	0	0	0	0.00	0.00	0	0	0	0	0	0	
PINAL	0	0	0	0.00	0.00	0	0	0	0	0	0	
YAVAPAI	0	0	0	0.00	0.00	0	0	0	0	0	0	
YUMA	0	0	0	0.00	0.00	0	0	0	0	0	0	
SOUTHERN	0	0	0	0.00	0.00	0	0	0	0	0	0	
COCHISE	0	0	0	0.00	0.00	0	0	0	0	0	0	
GRAHAM	0	0	0	0.00	0.00	0	0	0	0	0	0	
GREENLEE	0	0	0	0.00	0.00	0	0	0	0	0	0	
PIMA	0	0	0	0.00	0.00	0	0	0	0	0	0	
SANTA CRUZ	0	0	0	0.00	0.00	0	0	0	0	0	0	

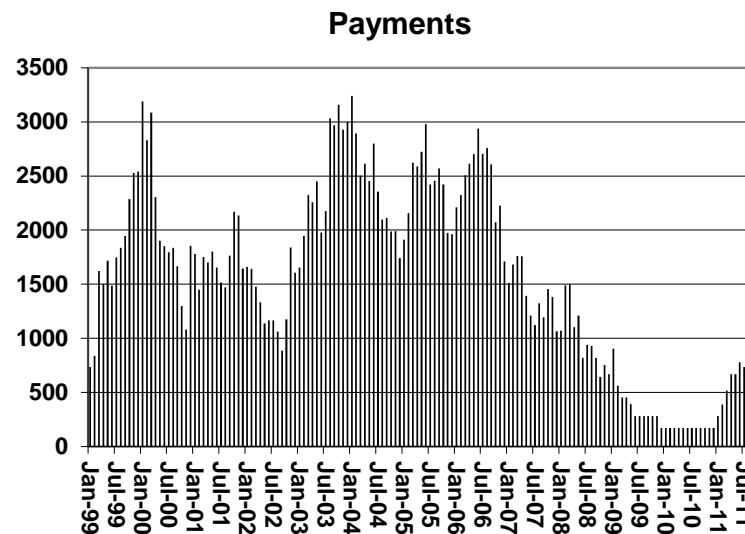
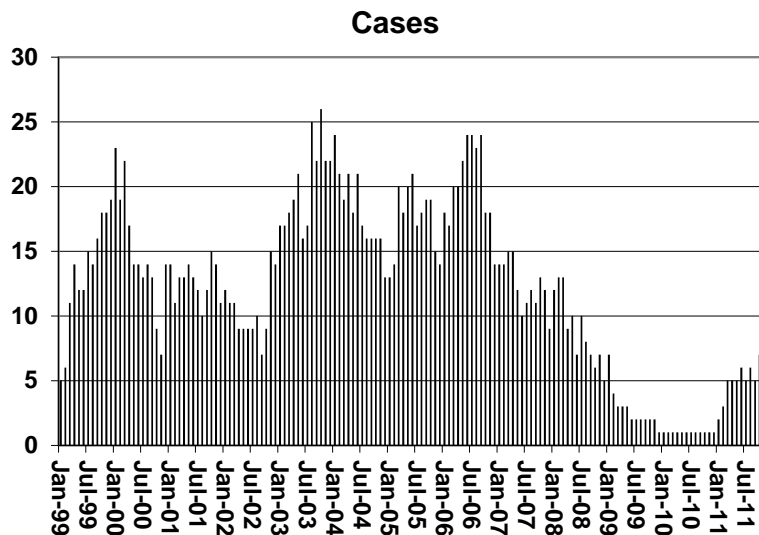
1/EXCLUDES: PRIOR MONTH NET TOTALS OF : 1 CASES; 1 RECIPIENTS; \$617.

# CHART 4

## TUBERCULOSIS CONTROL PROGRAM

### COMPARISON OF CASES, PAYMENTS & AVERAGE PAYMENTS

FOR 1999, 2000, 2001, 2002, 2003, 2004, 2005, 2006, 2007, 2008, 2009, 2010, & 2011



### Average Payment Per Case

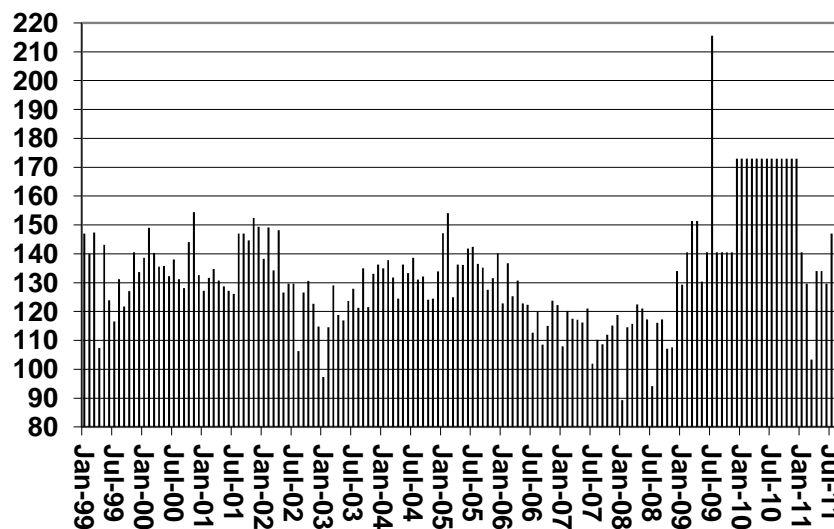


TABLE 6

SUPPLEMENTAL NUTRITION ASSISTANCE PROGRAM: ARIZONA 1/

CHANGE FROM

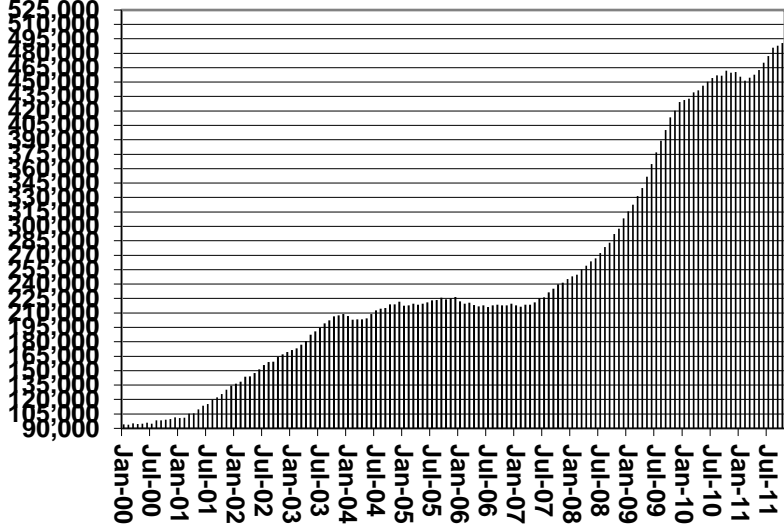
	OCTOBER 2011				TOTAL PAYMENTS ISSUANCE			SEPTEMBER 2011			OCTOBER 2010			TOTAL PAYMENTS ISSUANCE		
	HOUSEHOLDS	PERSONS	ADULTS	CHILDREN	AVERAGE PAYMT./ HOUSEHOLD	AVERAGE PAYMT./ PERSON	HOUSEHOLDS	PERSONS	ISSUANCE	HOUSEHOLDS	PERSONS	ISSUANCE	HOUSEHOLDS	PERSONS	ISSUANCE	
ARIZONA	490,485	1,138,220	585,215	553,005	144,513,656	294.63	126.96		2,619	6,862	1,328,257	28,604	83,015	9,765,680		
REGION																
MARICOPA	263,469	616,581	296,612	319,969	79,208,575	300.64	128.46		1,564	4,278	869,217	13,808	45,256	5,902,970		
NORTHERN	56,322	136,700	76,898	59,802	16,909,098	300.22	123.69		349	558	110,231	3,614	8,936	879,600		
APACHE	10,684	29,125	15,879	13,246	3,577,976	334.89	122.85		67	97	24,617	810	1,765	200,268		
COCONINO	10,122	24,946	13,385	11,561	3,069,946	303.29	123.06		127	110	35,788	539	1,334	156,911		
MOHAVE	21,463	45,999	27,570	18,429	5,757,416	268.25	125.16		85	219	37,230	1,198	3,183	301,737		
NAVAJO	14,053	36,630	20,064	16,566	4,503,760	320.48	122.95		70	132	12,596	1,067	2,654	220,684		
CENTRAL	65,634	156,801	84,908	71,893	19,271,375	293.62	122.90		407	1,040	165,794	5,396	15,035	1,507,174		
GILA	6,222	13,677	7,918	5,759	1,766,625	283.93	129.17		22	74	13,426	241	705	51,735		
LA PAZ	2,066	4,290	2,480	1,810	546,754	264.64	127.45		6	31	5,446	111	296	33,041		
PINAL	23,799	59,425	30,691	28,734	7,498,559	315.08	126.19		154	529	86,123	2,327	6,780	782,390		
YAVAPAI	15,963	32,463	19,470	12,993	4,007,942	251.08	123.46		203	356	62,884	1,404	3,114	352,168		
YUMA	17,584	46,946	24,349	22,597	5,451,495	310.03	116.12		22	50	(2,085)	1,313	4,140	287,840		
SOUTHERN	105,060	228,138	126,797	101,341	29,124,608	277.22	127.66		299	986	183,015	5,786	13,788	1,475,936		
COCHISE	11,086	24,014	13,773	10,241	2,929,739	264.27	122.00		40	93	12,728	731	1,644	125,314		
GRAHAM	3,593	8,210	4,561	3,649	1,036,058	288.35	126.19		31	78	6,143	164	256	6,792		
GREENLEE	526	1,136	652	484	149,948	285.07	132.00		(4)	(17)	771	43	79	17,807		
PIMA	85,068	182,014	101,271	80,743	23,490,665	276.14	129.06		198	767	157,263	4,468	10,792	1,230,787		
SANTA CRUZ	4,787	12,764	6,540	6,224	1,518,198	317.15	118.94		34	65	6,110	380	1,017	95,236		

1/EXCLUDES: PRIOR MONTH NET TOTALS OF : 6,879 CASES; 17,696 RECIPIENTS; \$1,100,092.  
 AGED CANCELATIONS: 13,507 CASES; 15,733 RECIPIENTS; \$784,532.  
 SNAP CONVERSIONS: 0 CASES; 0 RECIPIENTS; \$0.  
 SNAP CHILD ONLY: 62,463 CASES; 148,034 RECIPIENTS; \$22,418,391.  
 SNAP ZERO PAY: 5,013 CASES; 18,897 RECIPIENTS.

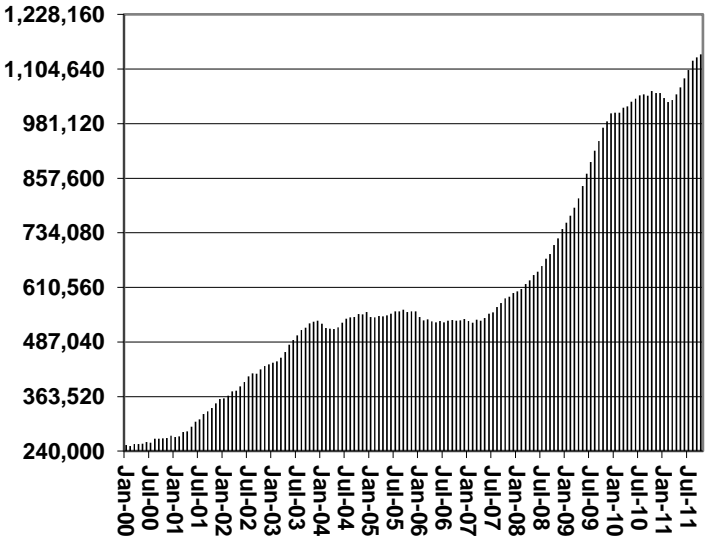
# CHART 6

## SUPPLEMENTAL NUTRITION ASSISTANCE PROGRAM (SNAP) COMPARISON OF HOUSEHOLDS, RECIPIENTS, PAYMENTS & AVERAGE PAYMENTS FOR 1999, 2000, 2001, 2002, 2003, 2004, 2005, 2006, 2007, 2008, 2009, 2010, & 2011

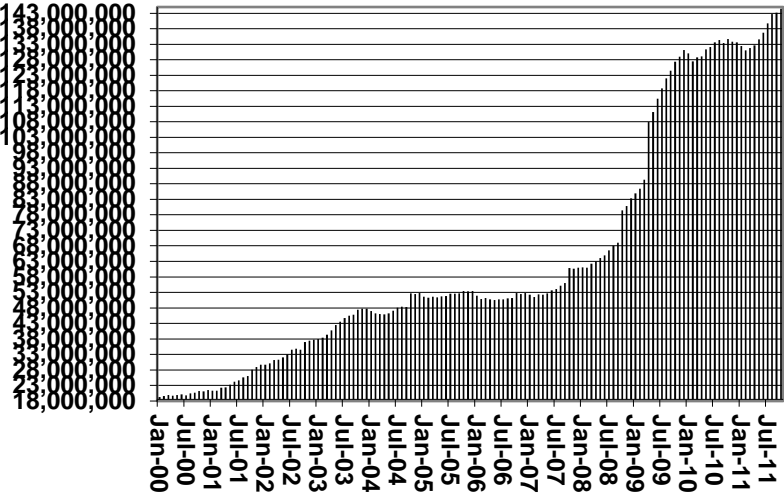
**Households**



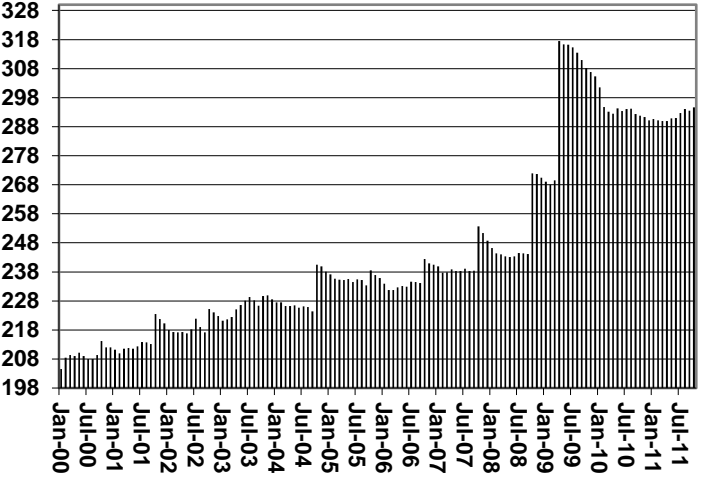
**Recipients**



**Payments**



**Average Payment Per Household**





**TABLE 7A**  
**MEDICAL ASSISTANCE PROGRAM**  
**RECIPIENTS**  
**OCTOBER 2011**

	SOBRA WOMAN 133% FPL	SOBRA CHILD	ADULT W/O CHILD 100% FPL	FOSTER CARE	1931 36% FPL	FEDERAL EMERGENCY SERVICES	INFANTS	ADULT W/O CHILD 40% FPL	MEDICAL W/SPEND DOWN	SOBRA WOMAN 100% FPL	SOBRA CHILD 100% FPL	TRANSITIONAL MEDICAL T1 - T4	1931 100% FPL	YATI	OTHER	TOTAL CASES
ARIZONA	11,497	65,137	49,884	13,607	369,277	57,535	46,042	142,148	12	4,308	242,014	46,535	125,523	340	29,655	1,203,514
REGION																
MARICOPA	6,503	37,508	24,760	7,490	207,051	45,814	27,407	72,500	11	2,391	143,726	24,143	65,192	175	15,470	680,141
NORTHERN	1,246	6,724	5,890	681	46,480	1,022	4,615	21,416	1	475	23,859	5,570	14,954	16	3,068	136,017
APACHE	196	1,307	820	39	11,971	60	882	5,032	0	78	4,182	1,028	2,669	0	422	28,686
COCONINO	276	1,274	1,154	139	8,730	408	1,056	3,704	0	106	4,977	1,180	3,030	13	433	26,480
MOHAVE	450	2,117	2,489	359	12,393	349	1,422	6,609	1	178	8,821	1,886	5,430	2	1,643	44,149
NAVAJO	324	2,026	1,427	144	13,386	205	1,255	6,071	0	113	5,879	1,476	3,825	1	570	36,702
CENTRAL	1,719	8,828	7,341	1,583	48,254	3,873	6,029	18,430	0	629	30,627	7,232	19,131	44	4,535	158,255
GILA	115	538	592	106	4,831	98	468	2,187	0	49	2,023	521	1,346	2	339	13,215
LA PAZ	40	209	217	25	1,355	114	151	637	0	11	633	164	358	0	167	4,081
PINAL	561	3,872	2,159	615	20,693	1,225	2,295	7,325	0	218	11,200	2,248	6,413	16	1,401	60,241
YAVAPAI	406	1,730	2,098	525	8,250	1,073	1,164	4,133	0	118	6,254	1,837	3,959	23	1,247	32,817
YUMA	597	2,479	2,275	312	13,125	1,363	1,951	4,148	0	233	10,517	2,462	7,055	3	1,381	47,901
SOUTHERN	2,029	12,077	11,893	3,853	67,492	6,826	7,991	29,802	0	813	43,802	9,590	26,246	105	6,582	229,101
COCHISE	213	1,175	1,493	244	7,127	418	783	2,677	0	93	4,455	948	2,797	7	906	23,336
GRAHAM	96	424	384	79	2,825	29	352	1,231	0	33	1,431	388	865	1	165	8,303
GREENLEE	15	45	51	9	485	4	56	203	0	4	237	25	98	1	36	1,269
PIMA	1,597	9,798	9,239	3,485	53,406	5,962	6,354	24,648	0	626	34,546	7,686	20,426	96	4,983	182,852
SANTA CRUZ	108	635	726	36	3,649	413	446	1,043	0	57	3,133	543	2,060	0	492	13,341

**TABLE 7B**  
**MEDICAL ASSISTANCE PROGRAM**  
**RECIPIENTS**

**CHANGE FROM**  
**SEPTEMBER 2011**

	SOBRA WOMAN 133% FPL	SOBRA CHILD	ADULT W/O CHILD 100% FPL	FOSTER CARE	1931 36% FPL	FEDERAL EMERGENCY SERVICES	INFANTS	ADULT W/O CHILD 40% FPL	MEDICAL W/SPEND DOWN	SOBRA WOMAN 100% FPL	SOBRA CHILD 100% FPL	TRANSITIONAL MEDICAL T1 - T4	1931 100% FPL	YATI	OTHER	TOTAL CASES
ARIZONA	83	(3,239)	(4,228)	121	3,793	1,243	(288)	(10,794)	(1,043)	17	1,016	2,217	(795)	3	(77)	(11,971)
REGION																
MARICOPA	62	(1,568)	(2,062)	81	2,352	1,180	(165)	(5,538)	(552)	44	1,150	819	(177)	(4)	(33)	(4,411)
NORTHERN	10	(671)	(526)	8	338	32	(55)	(1,626)	(169)	(34)	31	436	(48)	(2)	(44)	(2,320)
APACHE	(10)	(176)	(119)	3	97	(1)	(11)	(339)	(33)	(7)	(48)	144	(11)	0	2	(509)
COCONINO	3	(116)	(119)	2	(27)	28	(19)	(322)	(18)	(1)	33	59	(37)	(2)	(15)	(551)
MOHAVE	18	(103)	(163)	5	171	0	(12)	(533)	(91)	(23)	(16)	98	14	0	(10)	(645)
NAVAJO	(1)	(276)	(125)	(2)	97	5	(13)	(432)	(27)	(3)	62	135	(14)	0	(21)	(615)
CENTRAL	23	(280)	(699)	7	562	6	1	(1,337)	(117)	9	(132)	605	(319)	7	12	(1,652)
GILA	(2)	(37)	(47)	5	(18)	(8)	(4)	(146)	(20)	6	56	22	6	(1)	1	(187)
LA PAZ	4	(12)	(13)	0	5	(8)	(3)	(46)	(1)	(3)	(2)	(2)	(10)	0	1	(90)
PINAL	(3)	(116)	(193)	8	333	34	10	(534)	(33)	5	7	128	(49)	2	2	(399)
YAVAPAI	25	36	(201)	(11)	131	(3)	(8)	(318)	(35)	6	(19)	81	(63)	6	(1)	(374)
YUMA	(1)	(151)	(245)	5	111	(9)	6	(293)	(28)	(5)	(174)	376	(203)	0	9	(602)
SOUTHERN	(12)	(720)	(941)	25	541	25	(69)	(2,293)	(205)	(2)	(33)	357	(251)	2	(12)	(3,588)
COCHISE	(12)	(74)	(64)	1	28	4	(17)	(217)	(28)	0	(27)	76	(46)	0	(12)	(388)
GRAHAM	3	(29)	(39)	2	(16)	(1)	(9)	(70)	(11)	0	30	17	1	0	(13)	(135)
GREENLEE	4	(5)	(9)	0	29	0	(1)	(8)	(2)	1	(10)	(6)	(5)	1	(1)	(12)
PIMA	(5)	(578)	(763)	20	494	14	(40)	(1,946)	(157)	(8)	(73)	233	(202)	1	14	(2,996)
SANTA CRUZ	(2)	(34)	(66)	2	6	8	(2)	(52)	(7)	5	47	37	1	0	0	(57)

**TABLE 7C**  
**MEDICAL ASSISTANCE PROGRAM**  
**RECIPIENTS**

**CHANGE FROM**  
**OCTOBER 2010**

	SOBRA WOMAN 133% FPL	SOBRA CHILD	ADULT W/O CHILD 100% FPL	FOSTER CARE	1931 36% FPL	FEDERAL EMERGENCY SERVICES	INFANTS	ADULT W/O CHILD 40% FPL	MEDICAL W/SPEND DOWN	SOBRA WOMAN 100% FPL	SOBRA CHILD 100% FPL	TRANSITIONAL MEDICAL T1 - T4	3E 1931 100% FPL	YATI	OTHER	TOTAL CASES
ARIZONA	160	(6,486)	(14,862)	1,488	27,127	4,993	(1,730)	(31,927)	(7,602)	513	11,359	2,910	(2,123)	3	1,711	(14,466)
REGION																
MARICOPA	353	(3,164)	(6,871)	1,147	17,661	5,014	(1,213)	(16,415)	(4,147)	496	9,250	1,287	(1,120)	(12)	1,022	3,288
NORTHERN	41	(1,138)	(1,773)	37	2,120	(84)	(316)	(4,376)	(1,014)	(102)	376	(147)	(161)	(7)	106	(6,438)
APACHE	0	(271)	(254)	5	592	(28)	(91)	(749)	(137)	(37)	(131)	(128)	(64)	0	10	(1,283)
COCONINO	(5)	(253)	(522)	6	345	71	(26)	(1,074)	(169)	(2)	10	(43)	(114)	0	14	(1,762)
MOHAVE	66	(277)	(624)	28	599	(92)	(88)	(1,633)	(481)	(20)	451	(44)	148	(4)	94	(1,877)
NAVAJO	(20)	(337)	(373)	(2)	584	(35)	(111)	(920)	(227)	(43)	46	68	(131)	(3)	(12)	(1,516)
CENTRAL	(77)	(878)	(2,681)	74	3,788	(267)	(50)	(4,083)	(1,126)	39	834	1,054	(18)	8	195	(3,188)
GILA	(12)	(194)	(197)	6	273	(25)	(67)	(471)	(93)	6	32	143	(43)	2	(8)	(648)
LA PAZ	(10)	(67)	(68)	8	136	(9)	6	(218)	(22)	(2)	(113)	(44)	(66)	0	0	(469)
PINAL	(73)	(279)	(785)	(4)	2,351	25	75	(1,216)	(403)	33	757	315	259	2	133	1,190
YAVAPAI	9	(78)	(701)	56	692	(78)	(39)	(1,126)	(294)	2	16	166	(141)	6	(5)	(1,515)
YUMA	9	(260)	(930)	8	336	(180)	(25)	(1,052)	(314)	0	142	474	(27)	(2)	75	(1,746)
SOUTHERN	(157)	(1,306)	(3,537)	230	3,558	330	(151)	(7,053)	(1,315)	80	899	716	(824)	14	388	(8,128)
COCHISE	(29)	(62)	(250)	1	155	(29)	(30)	(653)	(167)	6	97	(43)	(41)	5	38	(1,002)
GRAHAM	(22)	(81)	(159)	6	59	(5)	16	(217)	(70)	3	(52)	109	(73)	(1)	0	(487)
GREENLEE	(5)	(14)	(16)	1	47	2	2	(7)	(8)	(1)	10	(29)	(27)	(1)	5	(41)
PIMA	(100)	(1,084)	(2,870)	214	3,113	453	(152)	(6,069)	(997)	83	922	672	(638)	12	330	(6,111)
SANTA CRUZ	(1)	(65)	(242)	8	184	(91)	13	(107)	(73)	(11)	(78)	7	(45)	(1)	15	(487)

# CHART 7

## MEDICAL ASSISTANCE PROGRAM

### COMPARISON OF RECIPIENTS

FOR 1999, 2000, 2001, 2002, 2003, 2004, 2005, 2006, 2007, 2008, 2009, 2010, & 2011

Total Recipients

