



---

DEPARTMENT OF ECONOMIC SECURITY

---

*Your Partner For A Stronger Arizona*

State of Arizona

Department of Economic Security

Family Assistance Administration

Statistical Bulletin

December, 2011

Phone: (602) 542-3678

<https://www.azdes.gov/appreports.aspx>

\*\*\*\* STATISTICAL BULLETIN \*\*\*\*  
ARIZONA DEPARTMENT OF ECONOMIC SECURITY  
FAMILY ASSISTANCE ADMINISTRATION  
BOX 6123, PHOENIX, ARIZONA 85005  
PHONE (602) 542-3678

DECEMBER 2011

THIS ISSUE OF THE STATISTICAL BULLETIN COMPARES DECEMBER 2011 DATA FOR EACH OF THE INDICATED PROGRAMS WITH THE INFORMATION FOR NOVEMBER 2011 AND DECEMBER 2010. STATEWIDE SUMMARIES OF ACTIVITY WITHIN EACH OF THE SPECIFIC PROGRAMS FOR THIS REPORT PERIOD ARE DISCUSSED BELOW. THE TABLES COMPARE CURRENT AND PRIOR MONTH DATA. DISTRICT AND COUNTY COMPARISONS ARE PROVIDED WITHIN THIS BULLETIN

TANF SUMMARY

COMPARING TO NOVEMBER 2011, DECEMBER 2011 CASES INCREASED BY 485 (2.85%) TO 17,512. RECIPIENTS INCREASED BY 1,303 (3.40%) TO 39,616. PAYMENTS INCREASED BY \$89,628 (2.52%) TO \$3,648,787. AVERAGE PAYMENT PER CASE DECREASED BY \$0.67 (0.32%) TO \$0.00. PAYEMENT PER RECIPIENT DECREASED BY \$0.80 (0.86%) TO \$92.10.

COMPARING TO DECEMBER 2010, DECEMBER 2011 CASES DECREASED BY 2,278 (11.51%). RECIPIENTS DECREASED BY 5,401 (12.00%). TOTAL PAYMENTS DECREASED BY \$568,323 (13.48%). THE AVERAGE PAYMENT PER CASE DECREASED BY \$4.73 (2.22%). THE AVERAGE PAYMENT PER RECIPIENT DECREASED BY \$1.58 (1.69%).

CASH ASSISTANCE (CA)

COMPARING TO NOVEMBER 2011, DECEMBER 2011 CASES INCREASED BY 349 (2.18%) TO 16,387. RECIPIENTS INCREASED BY 894 (2.52%) TO 36,408. PAYMENTS INCREASED BY \$72,735 (2.14%) TO \$3,470,771. AVERAGE PAYMENT PER CASE DECREASED BY \$0.07 (0.03%) TO \$211.80. PAYEMENT PER RECIPIENT DECREASED BY \$0.35 (0.37%) TO \$95.33.

COMPARING TO DECEMBER 2010, DECEMBER 2011 CASES DECREASED BY 2,290 (12.26%). RECIPIENTS DECREASED BY 5,309 (12.73%). TOTAL PAYMENTS DECREASED BY \$540,307 (13.47%). THE AVERAGE PAYMENT PER CASE DECREASED BY \$2.96 (1.38%). THE AVERAGE PAYMENT PER RECIPIENT DECREASED BY \$0.82 (0.85%).

CASH ASSISTANCE UNEMPLOYED PARENT PROGRAM (CA-UP)

COMPARING TO NOVEMBER 2011, DECEMBER 2011 CASES INCREASED BY 35 (8.75%) TO 435. RECIPIENTS INCREASED BY 153 (9.58%) TO 1,750. PAYMENTS INCREASED BY \$8,822 (7.44%) TO \$127,378. AVERAGE PAYMENT PER CASE DECREASED BY \$3.57 (1.20%) TO \$292.82. PAYEMENT PER RECIPIENT DECREASED BY \$1.45 (1.95%) TO \$72.79

COMPARING TO DECEMBER 2010, DECEMBER 2011 CASES DECREASED BY 160 (26.89%). RECIPIENTS DECREASED BY 453 (20.56%). TOTAL PAYMENTS DECREASED BY \$40,260 (24.02%). THE AVERAGE PAYMENT PER CASE INCREASED BY \$11.08 (3.93%). THE AVERAGE PAYMENT PER RECIPIENT DECREASED BY \$3.31 (4.34%).

CASH ASSISTANCE WITH GRANT UNDER \$100 (CA-MOE)

COMPARING TO NOVEMBER 2011, DECEMBER 2011 CASES INCREASED BY 97 (16.61%) TO 681. RECIPIENTS INCREASED BY 239 (20.17%) TO 1,424. PAYMENTS INCREASED BY \$7,853 (18.61%) TO \$50,052. AVERAGE PAYMENT PER CASE INCREASED BY \$1.24 (1.72%) TO \$73.50. AVERAGE PAYEMENT PER RECIPIENT DECREASED BY \$0.46 (1.29%) TO \$35.15.

COMPARING TO DECEMBER 2010, DECEMBER 2011 CASES INCREASED BY 197 (40.70%). RECIPIENTS INCREASED BY 418 (41.55%). TOTAL PAYMENTS INCREASED BY \$13,662 (37.54%). THE AVERAGE PAYMENT PER CASE DECREASED BY \$1.69 (2.25%). THE AVERAGE PAYMENT PER RECIPIENT DECREASED BY \$1.02 (2.82%).

CASH ASSISTANCE UNEMPLOYED PARENT PROGRAM WITH GRANT UNDER \$100 (CA-UP-MOE) NEW PROGRAM STARTING 7/01

COMPARING TO NOVEMBER 2011, DECEMBER 2011 CASES INCREASED BY 4 (80.00%) TO 9. RECIPIENTS INCREASED BY 17 (100.00%) TO 34. PAYMENTS INCREASED BY \$218 (59.24%) TO \$586. AVERAGE PAYMENT PER CASE DECREASED BY \$8.49 (11.54%) TO \$65.11. PAYEMENT PER RECIPIENT DECREASED BY \$4.41 (20.37%) TO \$17.24.

COMPARING TO DECEMBER 2010, DECEMBER 2011 CASES DECREASED BY 25 (73.53%). RECIPIENTS DECREASED BY 57 (15.49%). TOTAL PAYMENTS DECREASED BY \$1,418 (70.76%). THE AVERAGE PAYMENT PER CASE INCREASED BY \$6.17 (10.47%). THE AVERAGE PAYMENT PER RECIPIENT DECREASED BY \$4.78 (21.71%).

TUBERCULOSIS CONTROL PROGRAM (TC)

COMPARING TO NOVEMBER 2011, DECEMBER 2011 CASES DECREASED BY 1 (12.50%) TO 7. RECIPIENTS DECREASED BY 1 (12.50%) TO 7. PAYMENTS DECREASED BY \$238 (21.17%) TO \$886. AVERAGE PAYMENT PER CASE INCREASED BY \$67.86 (48.30%) TO \$208.36. AVERAGE PAYEMENT PER RECIPIENT DECREASED BY \$13.93 (9.91%) TO \$126.57.

COMPARING TO DECEMBER 2010, DECEMBER 2011 CASES INCREASED BY 6 (600.00%). RECIPIENTS INCREASED BY 6 (600.00%). TOTAL PAYMENTS INCREASED BY \$713 (412.14%). THE AVERAGE PAYMENT PER CASE INCREASED BY \$35.36 (20.44%). THE AVERAGE PAYMENT PER RECIPIENT DECREASED BY \$46.43 (26.84%).

SUPPLEMENTAL NUTRITION ASSISTANCE PROGRAM (SNAP)

COMPARING TO NOVEMBER 2011, DECEMBER 2011 SUPPLEMENTAL NUTRITION ASSISTANCE HOUSEHOLDS INCREASED BY 831 (0.17%) TO 490,227. PERSONS RECEIVING SUPPLEMENTAL NUTRITION ASSISTANCE INCREASED BY 783 (0.07%) TO 1,137,378. TOTAL COUPON ISSUANCE DECREASED BY \$23,657 (0.02%) TO \$144,024,472. THE AVERAGE HOUSEHOLD ALLOTMENT DECREASED BY \$0.55 (0.19%) TO \$293.79. THE AVERAGE ALLOTMENT PER PERSON DECREASED BY \$0.11 (0.08%) TO \$126.63.

COMPARING TO DECEMBER 2010, DECEMBER 2011 SUPPLEMENTAL NUTRITION ASSISTANCE HOUSEHOLDS INCREASED BY 29,905 (6.50%). PERSONS RECEIVING SUPPLEMENTAL NUTRITION ASSISTANCE INCREASED BY 86,692 (8.25%). TOTAL COUPON ISSUANCE INCREASED BY \$10,444,810 (7.82%). THE AVERAGE ALLOTMENT PER HOUSEHOLD INCREASED BY \$3.60 (1.24%). THE AVERAGE ALLOTMENT PER PERSON DECREASED BY \$0.51 (0.40%).

MEDICAL ASSISTANCE PROGRAM (MA) NEW TABLE INCLUDES PROP. 204 CATEGORIES

COMPARING TO NOVEMBER 2011, DECEMBER 2011 TOTAL RECIPIENTS TOTAL RECIPIENTS DECREASED BY 11,547 (0.97%). SOBRA WOMEN AT 140% FPL DECREASED BY 3 (0.03%). SOBRA CHILDREN DECREASED BY 2,766 (4.74%). ADULTS W/O CHILD AT 100% DECREASED BY 3,431 (7.53%). FOSTER CARE INCREASED BY 170 (0.00%). 1931 AT 36% FPL INCREASED BY 1,473 (0.00%). EMERGENCY SERVICES INCREASED BY 721 (1.24%). INFANTS INCREASED BY 202 (0.44%). ADULT W/O CHILD AT 140% DECREASED BY 9,456 (7.19%). MEDICAL W/SPEND DOWN INCREASED BY 0 (100.00%). SOBRA WOMAN AT 100% DECREASED BY 43 (1.03%). SOBRA CHILD AT 100% INCREASED BY 943 (0.39%). TRANSITIONAL MEDICAL INCREASED BY 633 (1.30%). 1931 AT 100% INCREASED BY 176 (0.14%). YATI DECREASED BY 2 (0.58%). ALL OTHER CATEGORIES DECREASED BY 164 (0.56%).

COMPARING TO DECEMBER 2010, DECEMBER 2011 TOTAL RECIPIENTS TOTAL RECIPIENTS DECREASED BY 32,665 (2.71%). SOBRA WOMEN AT 140% FPL INCREASED BY 646 (6.10%). SOBRA CHILDREN DECREASED BY 15,283 (21.57%). ADULTS W/O CHILD AT 100% DECREASED BY 22,207 (34.52%). FOSTER CARE INCREASED BY 1,494 (11.95%). 1931 AT 36% FPL INCREASED BY 36,311 (10.76%). EMERGENCY SERVICES INCREASED BY 8,616 (17.13%). INFANTS DECREASED BY 1,061 (2.26%). ADULT W/O CHILD AT 140% DECREASED BY 50,751 (29.37%). MEDICAL W/SPEND DOWN DECREASED BY 6,941 (100.00%). SOBRA WOMAN AT 100% INCREASED BY 470 (12.86%). SOBRA CHILD AT 100% INCREASED BY 12,706 (5.53%). TRANSITIONAL MEDICAL INCREASED BY 4,765 (10.70%). 1931 AT 100% DECREASED BY 2,379 (1.88%). YATI DECREASED BY 18 (5.00%). ALL OTHER CATEGORIES INCREASED BY 967 (3.42%).

## TANF SUMMARY

### TABLES 1, 1A, 1B, & 1C: ARIZONA 1/

	DECEMBER 2011								NOVEMBER 2011			CHANGE FROM DECEMBER 2010		
	FAMILIES (CASES)	PERSONS (RECIP.)	ADULTS	CHILDREN	TOTAL PAYMENTS	AVERAGE PAYMENT/ CASE	AVERAGE PAYMENT/ RECIP.		FAMILIES (CASES)	PERSONS (RECIP.)	TOTAL PAYMENTS	FAMILIES (CASES)	PERSONS (RECIP.)	TOTAL PAYMENTS
	ARIZONA	17,512	39,616	10,627	28,989	3,648,787	208.36	92.10		485	1,303	89,628	(2,278)	(5,401)
REGION														
MARICOPA	10,521	24,296	6,326	17,970	2,189,504	208.11	90.12		341	1,000	64,732	(1,766)	(4,335)	(437,342)
NORTHERN	1,091	2,466	717	1,749	223,461	204.82	90.62		36	68	5,598	14	98	427
APACHE	42	110	36	74	9,523	226.74	86.57		0	2	161	2	27	1,704
COCONINO	89	223	65	158	18,409	206.84	82.55		18	54	3,787	6	26	812
MOHAVE	629	1,321	362	959	126,941	201.81	96.09		17	(2)	1,360	8	18	(529)
NAVAJO	331	812	254	558	68,588	207.21	84.47		1	14	290	(2)	27	(1,560)
CENTRAL	2,082	4,528	1,279	3,249	431,203	207.11	95.23		65	147	11,963	(217)	(552)	(63,676)
GILA	474	1,025	371	654	110,891	233.95	108.19		23	47	4,135	(40)	(119)	(18,123)
LA PAZ	61	134	40	94	11,971	196.25	89.34		0	(2)	225	(27)	(67)	(6,078)
PINAL	796	1,713	436	1,277	157,236	197.53	91.79		60	144	11,884	(127)	(349)	(31,778)
YAVAPAI	311	650	149	501	60,904	195.83	93.70		9	26	1,580	26	94	4,703
YUMA	440	1,006	283	723	90,201	205.00	89.66		(27)	(68)	(5,861)	(49)	(111)	(12,400)
SOUTHERN	3,818	8,326	2,305	6,021	804,619	210.74	96.64		43	88	7,335	(309)	(612)	(67,732)
COCHISE	392	802	202	600	80,952	206.51	100.94		32	77	7,726	46	117	9,992
GRAHAM	214	459	156	303	50,481	235.89	109.98		(9)	(10)	(1,180)	(17)	9	(2,738)
GREENLEE	15	39	12	27	3,283	218.87	84.18		(4)	(10)	(814)	(1)	1	53
PIMA	3,049	6,676	1,854	4,822	638,340	209.36	95.62		4	(15)	(2,879)	(373)	(854)	(84,070)
SANTA CRUZ	148	350	81	269	31,563	213.26	90.18		20	46	4,482	36	115	9,031

1/EXCLUDES: PRIOR MONTH NET TOTALS OF 940 CASES; 2,392 RECIPIENTS; \$157,260.

GRANT DIVERSION TOTALS OF: 1,315 CASES; \$1,023,478.

ZERO PAY TOTALS OF 4,057 CASES; 12,090 RECIPIENTS.

RRP: 145 CASES; 224 RECIPIENTS; \$31,598.

1/INCLUDES: TANF CHILD ONLY: 9,251 CASES; 15,762 RECIPIENTS; \$1,812,067.

	CURRENT MO. CASES	CURRENT MO. RECIP.	CURRENT MO. DOLLARS	PRIOR MO. CASES	PRIOR MO. RECIP.	PRIOR MO. DOLLARS
PASQUAYUQUI	273	783	\$83,446	17	51	\$4,954
WM APACHE	0	0	\$0	0	0	\$0
SALT RIVER	82	264	\$23,775	5	23	\$2,112
SAN CARLOS	498	1,082	\$120,725	18	39	\$1,778
HOPI	120	325	\$26,448	5	14	\$715
<b>TOTAL</b>	<b>973</b>	<b>2,454</b>	<b>\$254,394</b>	<b>45</b>	<b>127</b>	<b>\$9,559</b>

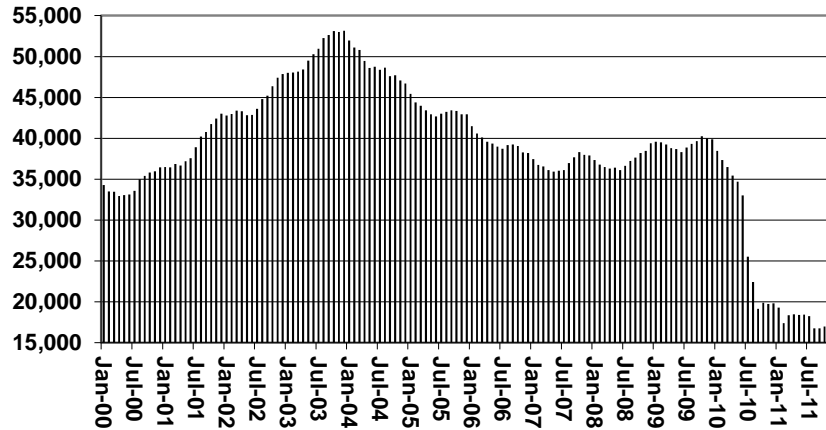
# TANF SUMMARY

TABLES 1, 1A, 1B, & 1C

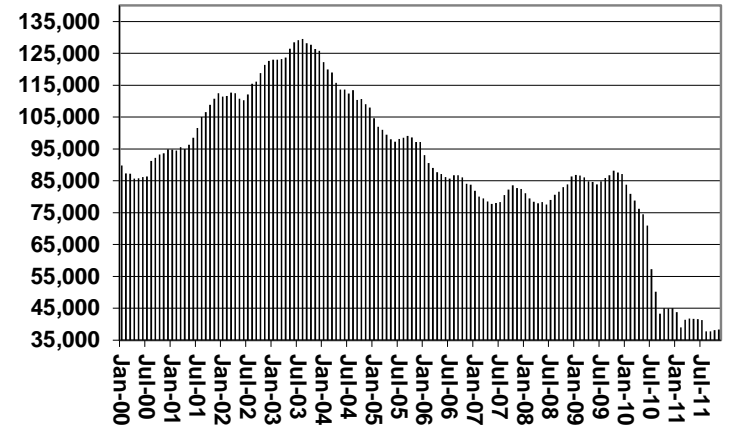
COMPARISON OF CASES, RECIPIENTS, PAYMENTS & AVERAGE PAYMENTS

FOR 2000, 2001, 2002, 2003, 2004, 2005, 2006, 2007, 2008, 2009, 2010, & 2011

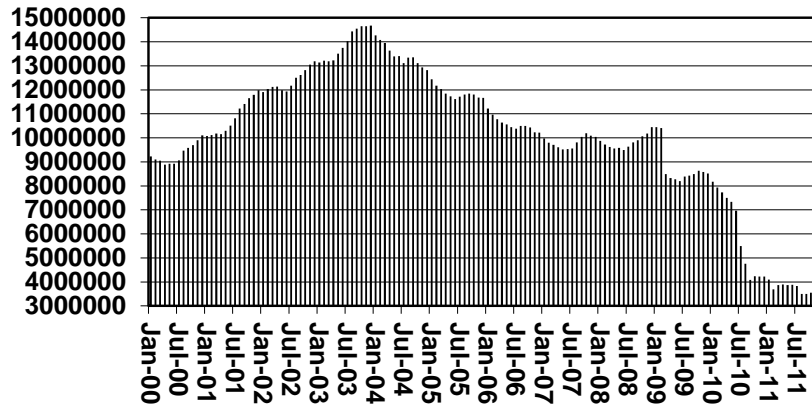
### Cases



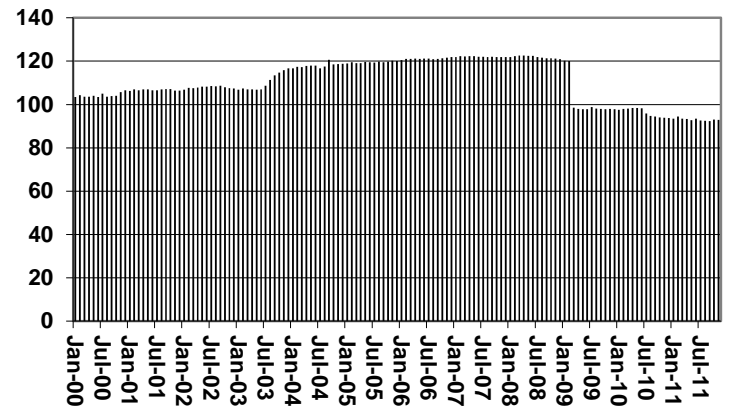
### Recipients



### Payments



### Average Payments Per Recipient



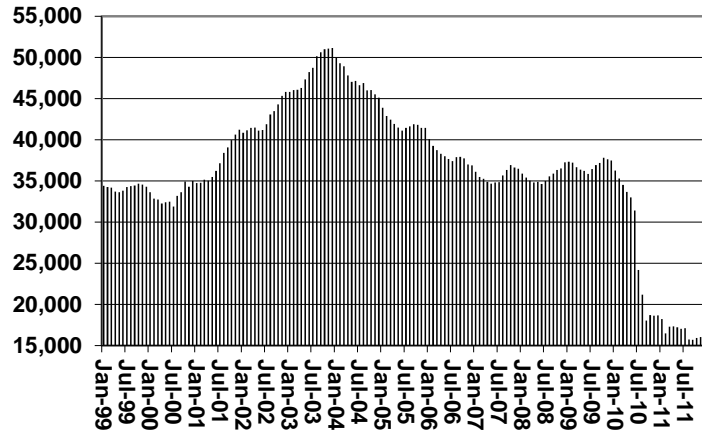


# CHART 1

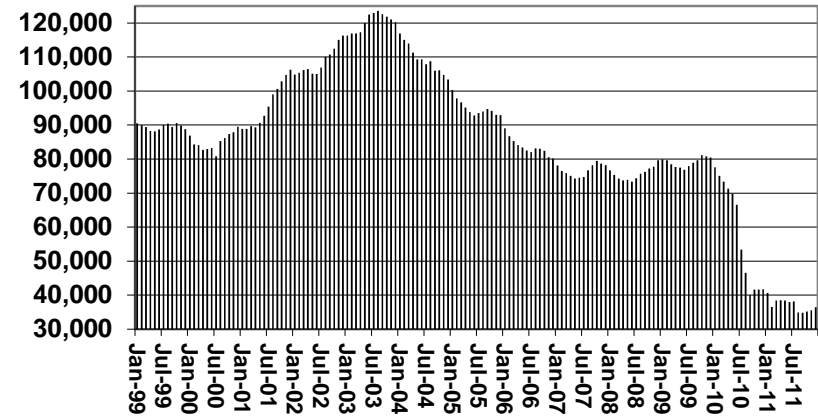
## CASH ASSISTANCE PROGRAM

### COMPARISON OF CASES, RECIPIENTS, PAYMENTS & AVERAGE PAYMENTS FOR 1999, 2000, 2001, 2002, 2003, 2004, 2005, 2006, 2007, 2008, 2009, 2010, & 2011

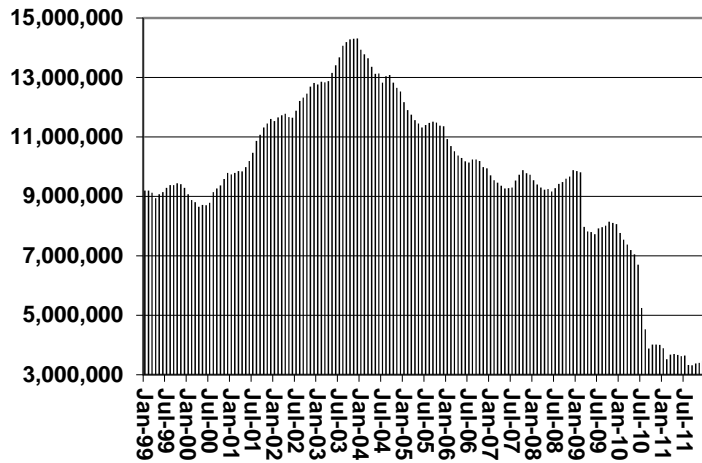
**Cases**



**Recipients**



**Payments**



**Average Payment Per Recipient**

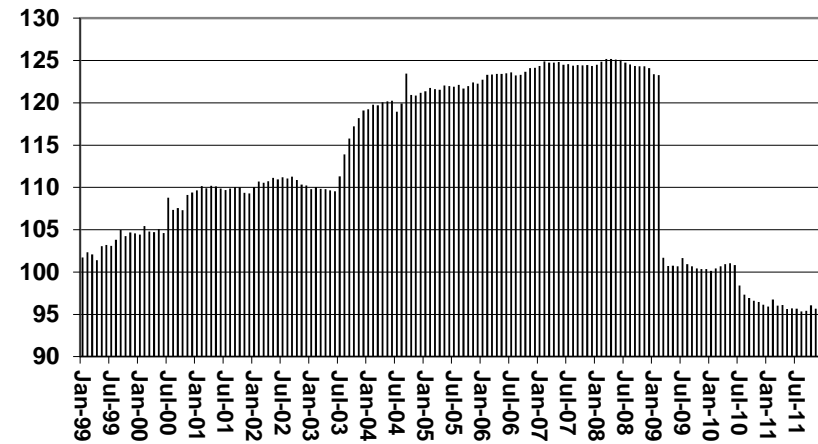


TABLE 1A  
CA-UP

CASH ASSISTANCE UNEMPLOYED PARENT PROGRAM: ARIZONA 1/

	DECEMBER 2011							CHANGE FROM			NOVEMBER 2011			DECEMBER 2010		
	FAMILIES (CASES)	PERSONS (RECIP.)	ADULTS	CHILDREN	TOTAL PAYMENTS	AVERAGE PAYMENT/ CASE	AVERAGE PAYMENT/ RECIP.	FAMILIES (CASES)	PERSONS (RECIP.)	TOTAL PAYMENTS	FAMILIES (CASES)	PERSONS (RECIP.)	TOTAL PAYMENTS	FAMILIES (CASES)	PERSONS (RECIP.)	TOTAL PAYMENTS
	ARIZONA	435	1,750	797	953	127,378	292.82	72.79	35	153	8,822	(160)	(453)	(40,260)		
REGION																
MARICOPA	248	1,031	450	581	76,437	308.21	74.14	31	131	9,637	(163)	(500)	(42,434)			
NORTHERN	37	134	64	70	9,276	250.70	69.22	4	14	262	16	54	3,493			
APACHE	5	16	8	8	1,365	273.00	85.31	(2)	(9)	(611)	4	13	1,087			
COCONINO	4	20	7	13	942	235.50	47.10	1	9	145	3	16	607			
MOHAVE	13	42	22	20	3,437	264.38	81.83	(1)	(9)	(645)	(3)	(20)	(1,136)			
NAVAJO	15	56	27	29	3,532	235.47	63.07	6	23	1,373	12	45	2,935			
CENTRAL	42	152	76	76	10,027	238.74	65.97	0	(6)	(486)	(14)	(56)	(4,020)			
GILA	2	9	4	5	603	301.50	33.50	0	0	0	0	1	100			
LA PAZ	1	3	2	1	268	268.00	89.33	0	(1)	(67)	(3)	(16)	(932)			
PINAL	21	78	36	42	5,093	242.52	65.29	0	(5)	(419)	(11)	(41)	(3,188)			
YAVAPAI	5	19	10	9	1,105	221.00	58.16	1	5	76	2	10	271			
YUMA	13	43	24	19	2,958	227.54	68.79	(4)	(15)	(1,822)	6	22	1,322			
SOUTHERN	108	433	207	226	31,638	292.94	73.07	3	24	1,155	(7)	17	1,108			
COCHISE	5	16	10	6	1,365	273.00	85.31	0	(2)	(154)	0	(4)	(124)			
GRAHAM	3	11	6	5	920	0.00	0.00	1	3	250	2	6	528			
GREENLEE	1	8	2	6	420	420.00	52.50	0	0	(143)	1	8	420			
PIMA	94	378	181	197	27,361	291.07	72.38	2	24	884	(15)	(13)	(1,288)			
SANTA CRUZ	5	20	8	12	1,572	314.40	21.00	0	(1)	318	5	20	1,572			

1/EXCLUDES: PRIOR MONTH NET TOTALS OF: 45 CASES; 171 RECIPIENTS; \$14,827.  
GRANT DIVERSION TOTALS OF: 0 CASES; \$0.  
ZERO PAY TOTALS OF 9 CASES; 37 RECIPIENTS.

CASES WITH GRANT UNDER \$100 (SEE TABLE 1C).

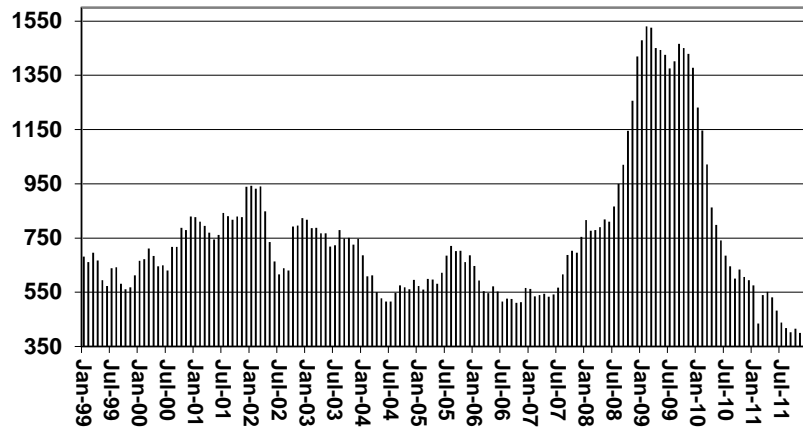
	CURRENT MO. CASES	CURRENT MO. RECIP.	CURRENT MO. DOLLARS	PRIOR MO. CASES	PRIOR MO. RECIP.	PRIOR MO. DOLLARS
PASQUA/YAQUI	7	30	\$2,791	0	0	\$0
WM APACHE	0	0	\$0	0	0	\$0
SALT RIVER	0	0	\$0	0	0	\$0
SAN CARLOS	0	0	\$0	0	0	\$0
HOPI	0	0	\$0	0	0	\$0
TOTAL	7	30	\$2,791	0	0	\$0

# CHART 1A

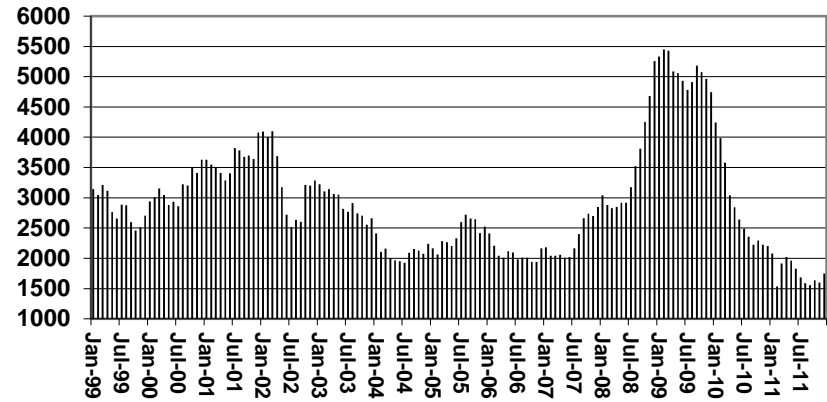
## CASH ASSISTANCE UNEMPLOYED PARENT PROGRAM

### COMPARISON OF CASES, RECIPIENTS, PAYMENTS & AVERAGE PAYMENTS FOR 1999, 2000, 2001, 2002, 2003, 2004, 2005, 2006, 2007, 2008, 2009, 2010, & 2011

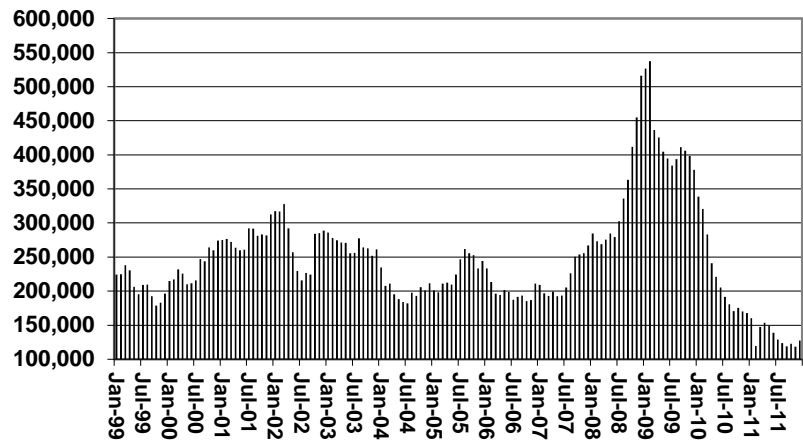
Cases



Recipients



Payments



Average Payment Per Recipient

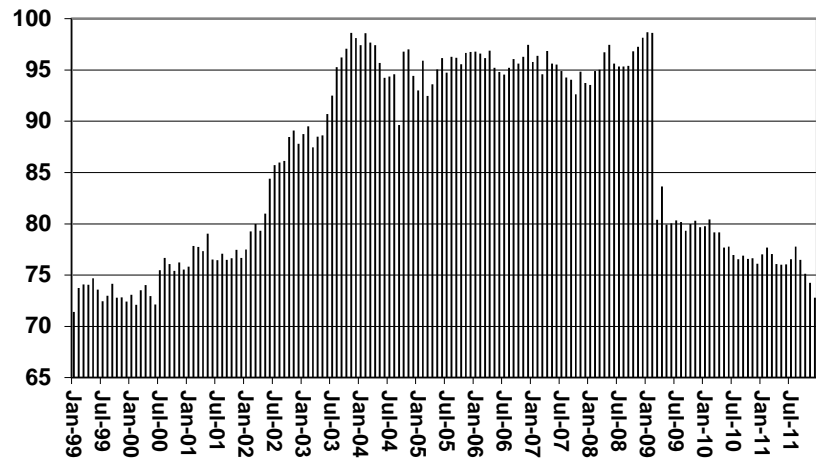




TABLE 1B 1/

CASH ASSISTANCE: ARIZONA  
CASES WITH GRANT UNDER \$100

	DECEMBER 2011							CHANGE FROM			NOVEMBER 2011			DECEMBER 2010		
	FAMILIES (CASES)	PERSONS (RECIP.)	ADULTS	CHILDREN	TOTAL PAYMENTS	AVERAGE PAYMENT/ CASE	AVERAGE PAYMENT/ RECIP.	FAMILIES (CASES)	PERSONS (RECIP.)	TOTAL PAYMENTS	FAMILIES (CASES)	PERSONS (RECIP.)	TOTAL PAYMENTS	FAMILIES (CASES)	PERSONS (RECIP.)	TOTAL PAYMENTS
	ARIZONA	681	1,424	395	1,029	50,052	73.50	35.15	97	239	7,853	197	418	13,662		
REGION																
MARICOPA	428	916	246	670	30,712	71.76	33.53	72	181	4,465	134	279	9,025			
NORTHERN	43	91	26	65	3,557	82.72	39.09	5	13	766	7	23	881			
APACHE	2	3	1	2	218	109.00	72.67	(1)	(1)	0	1	1	149			
COCONINO	4	7	2	5	306	76.50	43.71	0	0	(28)	(1)	(5)	(236)			
MOHAVE	25	55	16	39	2,080	83.20	37.82	5	11	673	5	19	780			
NAVAJO	12	26	7	19	953	79.42	36.65	1	3	121	2	8	188			
CENTRAL	64	136	42	94	4,751	74.23	34.93	8	27	781	16	49	1,184			
GILA	1	1	0	1	73	73.00	73.00	(2)	(5)	(153)	0	(2)	(48)			
LA PAZ	6	10	5	5	430	71.67	43.00	1	1	138	2	4	170			
PINAL	25	55	18	37	1,800	72.00	32.73	4	14	543	4	17	140			
YAVAPAI	10	21	4	17	801	80.10	38.14	1	2	141	1	6	227			
YUMA	22	49	15	34	1,647	74.86	33.61	4	15	112	9	24	695			
SOUTHERN	146	281	81	200	11,032	75.56	39.26	12	18	1,841	40	67	2,572			
COCHISE	12	25	6	19	1,075	89.58	43.00	(4)	(5)	102	5	13	503			
GRAHAM	3	8	2	6	296	98.67	37.00	(1)	1	15	1	5	228			
GREENLEE	0	0	0	0	36	0.00	0.00	0	0	36	(3)	(6)	(222)			
PIMA	120	229	70	159	8,898	74.15	38.86	13	17	1,457	32	54	1,857			
SANTA CRUZ	11	19	3	16	727	66.09	38.26	4	5	231	5	1	206			

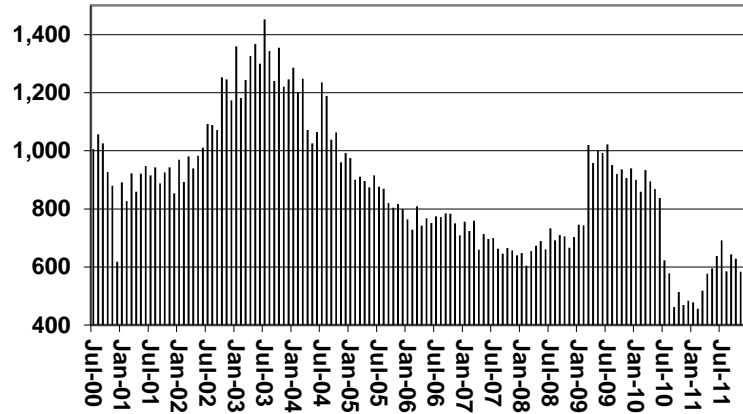
EXCLUDES: PRIOR MONTH NET TOTALS OF 439 CASES; 97 RECIPIENTS; \$27,655.

# CHART 1B

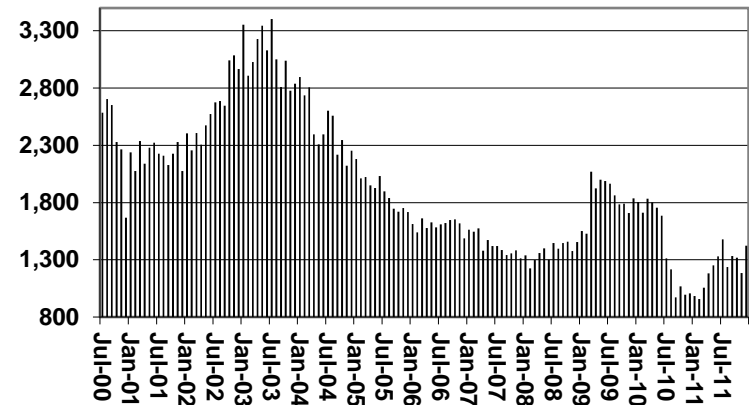
## CASH ASSISTANCE PROGRAM CASES WITH GRANT UNDER \$100

FOR 1999, 2000, 2001, 2002, 2003, 2004, 2005, 2006, 2007, 2008, 2009, 2010, & 2011

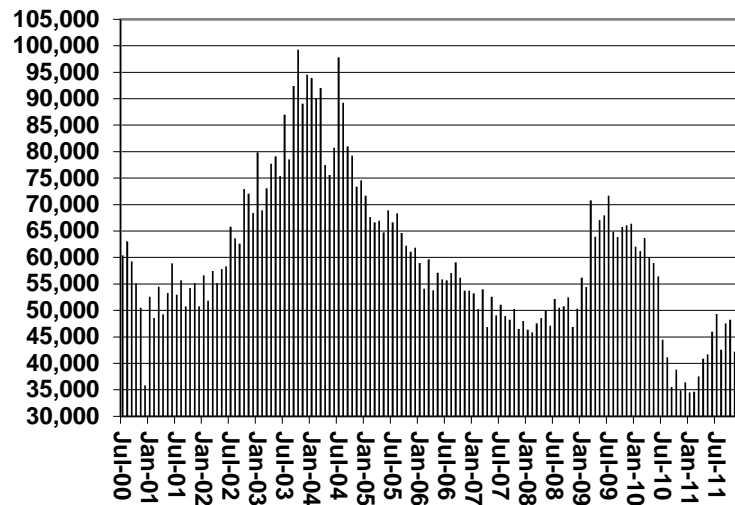
Cases



Recipients



Payments



Average Payment Per Recipient

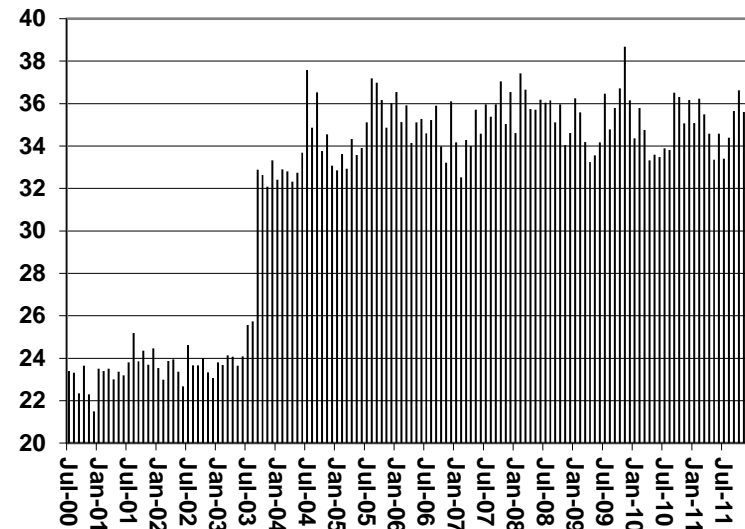


TABLE 1C 1/

CASH ASSISTANCE UNEMPLOYED PARENT PROGRAM: ARIZONA  
 CASES WITH GRANT UNDER \$100

	DECEMBER 2011							CHANGE FROM			NOVEMBER 2011			DECEMBER 2010		
	FAMILIES	PERSONS	ADULTS	CHILDREN	TOTAL	AVERAGE	AVERAGE	FAMILIES	PERSONS	TOTAL	FAMILIES	PERSONS	TOTAL			
	(CASES)	(RECIP.)												PAYMENTS	PAYMENT/ CASE	PAYMENT/ RECIP.
ARIZONA	9	34	18	16	586	65.11	17.24	4	17	218	(25)	(57)	(1,418)			
REGION																
MARICOPA	5	19	10	9	374	74.80	19.68	1	7	98	(25)	(62)	(1,423)			
NORTHERN	1	5	2	3	92	92.00	18.40	0	0	0	1	5	92			
APACHE	0	0	0	0	0	0.00	0.00	0	0	0	0	0	0			
COCONINO	0	0	0	0	0	0.00	0.00	0	0	0	0	0	0			
MOHAVE	0	0	0	0	0	0.00	0.00	0	0	0	0	0	0			
NAVAJO	1	5	2	3	92	92.00	18.40	0	0	0	1	5	92			
CENTRAL	2	6	4	2	86	43.00	14.33	2	6	86	0	0	29			
GILA	0	0	0	0	0	0.00	0.00	0	0	0	0	0	0			
LA PAZ	0	0	0	0	0	0.00	0.00	0	0	0	0	0	0			
PINAL	2	6	4	2	86	43.00	14.33	2	6	86	1	3	58			
YAVAPAI	0	0	0	0	0	0.00	0.00	0	0	0	0	0	0			
YUMA	0	0	0	0	0	0.00	0.00	0	0	0	(1)	(3)	(29)			
SOUTHERN	1	4	2	2	34	34.00	8.50	1	4	34	(1)	0	(116)			
COCHISE	0	0	0	0	0	0.00	0.00	0	0	0	0	0	0			
GRAHAM	0	0	0	0	0	0.00	0.00	0	0	0	0	0	0			
GREENLEE	0	0	0	0	0	0.00	0.00	0	0	0	0	0	0			
PIMA	1	4	2	2	34	34.00	8.50	1	4	34	(1)	0	(116)			
SANTA CRUZ	0	0	0	0	0	0.00	0.00	0	0	0	0	0	0			

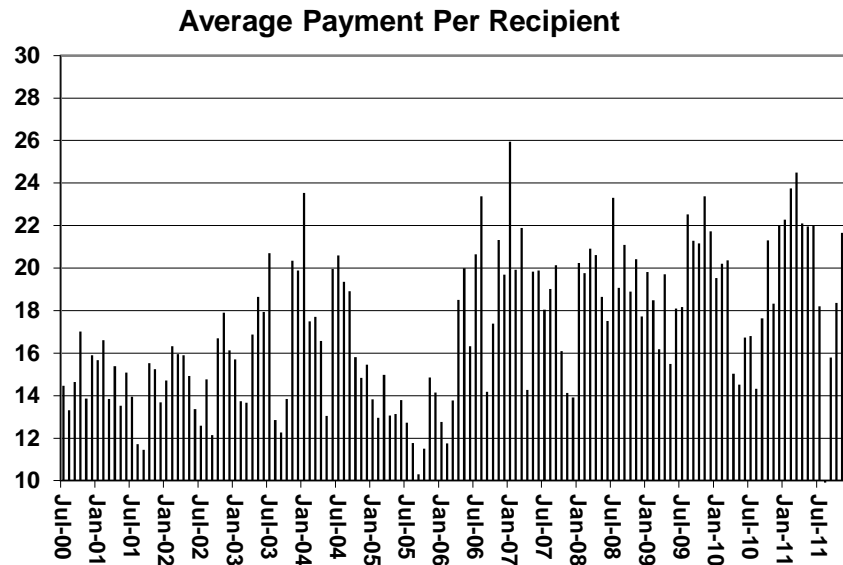
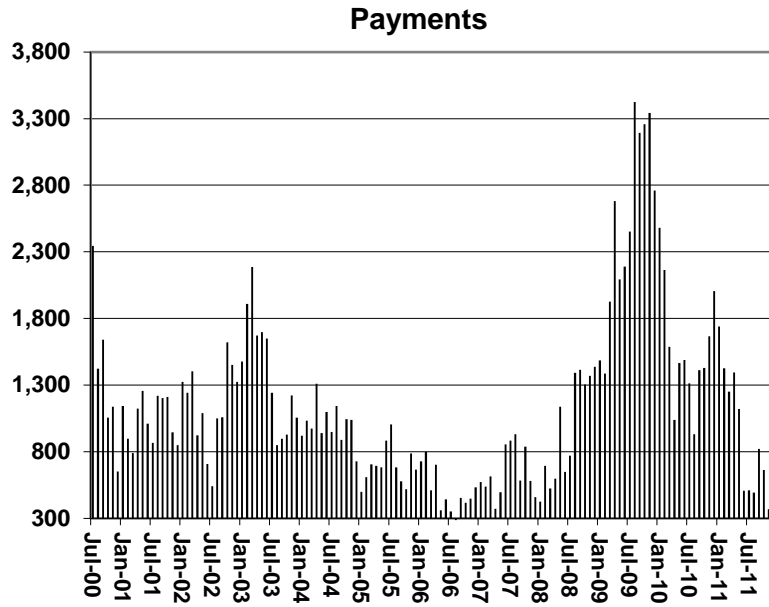
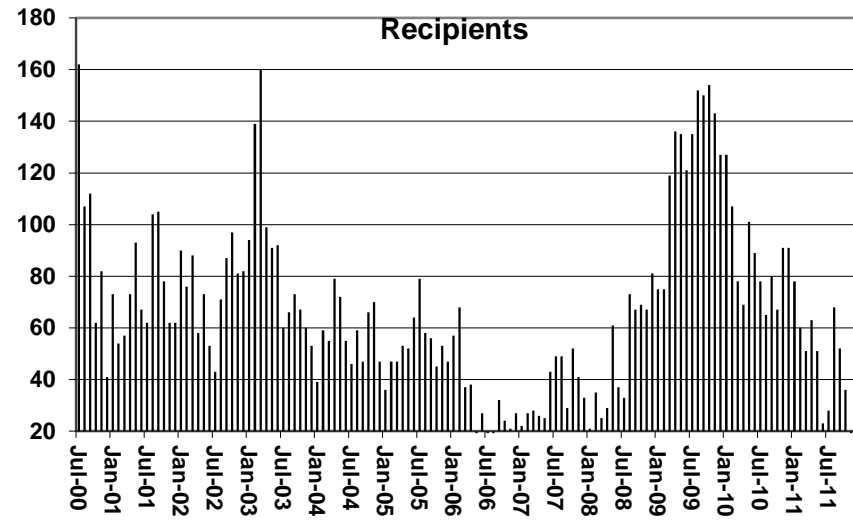
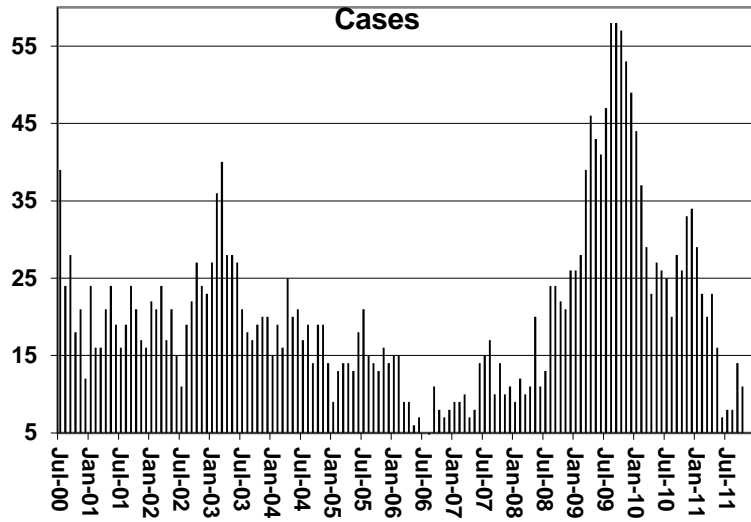
EXCLUDES: PRIOR MONTH NET TOTALS OF 26 CASES; 112 RECIPIENTS; \$1,505.

# CHART 1C

## CASH ASSISTANCE UNEMPLOYED PARENT PROGRAM

### CASES WITH GRANT UNDER \$100

FOR 1999, 2000, 2001, 2002, 2003, 2004, 2005, 2006, 2007, 2008, 2009, 2010, & 2011



**TABLE 4**  
**TUBERCULOSIS CONTROL: ARIZONA 1/**

	CHANGE FROM										
	DECEMBER 2011					NOVEMBER 2011			DECEMBER 2010		
	NUMBER OF CASES	PERSONS (RECIP.)	TOTAL PAYMENTS	AVERAGE PAYMENT/ CASE	AVERAGE PAYMENT/ RECIP.	NUMBER OF CASES	PERSONS (RECIP.)	TOTAL PAYMENTS	NUMBER OF CASES	PERSONS (RECIP.)	TOTAL PAYMENTS
ARIZONA	7	7	886	126.57	126.57	(1)	(1)	(238)	6	6	713
REGION											
MARICOPA	7	7	886	126.57	126.57	(1)	(1)	(238)	6	6	713
NORTHERN	0	0	0	0.00	0.00	0	0	0	0	0	0
APACHE	0	0	0	0.00	0.00	0	0	0	0	0	0
COCONINO	0	0	0	0.00	0.00	0	0	0	0	0	0
MOHAVE	0	0	0	0.00	0.00	0	0	0	0	0	0
NAVAJO	0	0	0	0.00	0.00	0	0	0	0	0	0
CENTRAL	0	0	0	0.00	0.00	0	0	0	0	0	0
GILA	0	0	0	0.00	0.00	0	0	0	0	0	0
LA PAZ	0	0	0	0.00	0.00	0	0	0	0	0	0
PINAL	0	0	0	0.00	0.00	0	0	0	0	0	0
YAVAPAI	0	0	0	0.00	0.00	0	0	0	0	0	0
YUMA	0	0	0	0.00	0.00	0	0	0	0	0	0
SOUTHERN	0	0	0	0.00	0.00	0	0	0	0	0	0
COCHISE	0	0	0	0.00	0.00	0	0	0	0	0	0
GRAHAM	0	0	0	0.00	0.00	0	0	0	0	0	0
GREENLEE	0	0	0	0.00	0.00	0	0	0	0	0	0
PIMA	0	0	0	0.00	0.00	0	0	0	0	0	0
SANTA CRUZ	0	0	0	0.00	0.00	0	0	0	0	0	0

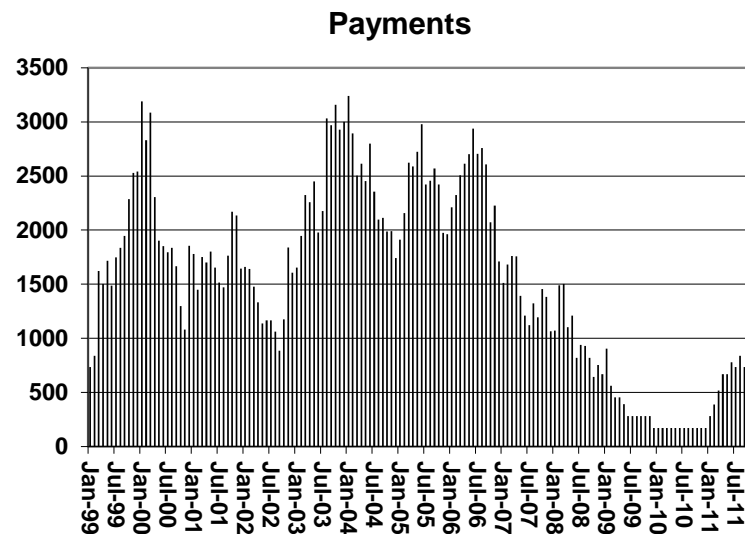
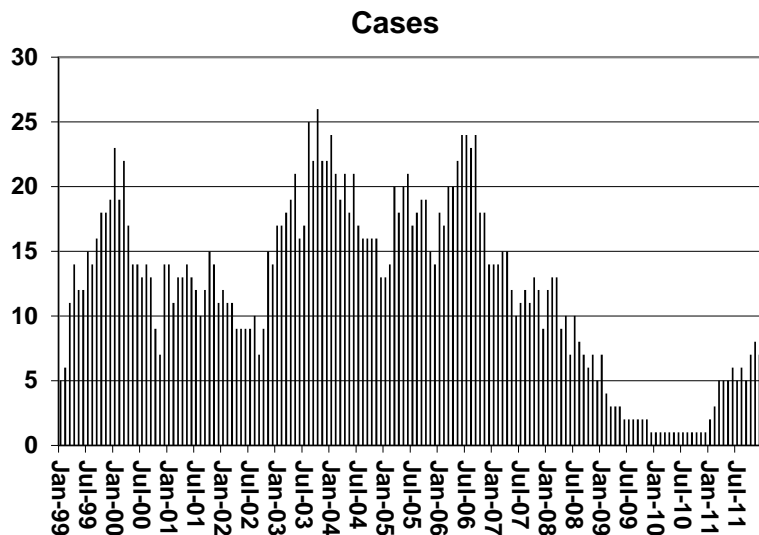
1/EXCLUDES: PRIOR MONTH NET TOTALS OF : 1 CASES; 1 RECIPIENTS; \$132.

# CHART 4

## TUBERCULOSIS CONTROL PROGRAM

### COMPARISON OF CASES, PAYMENTS & AVERAGE PAYMENTS

FOR 1999, 2000, 2001, 2002, 2003, 2004, 2005, 2006, 2007, 2008, 2009, 2010, & 2011



### Average Payment Per Case

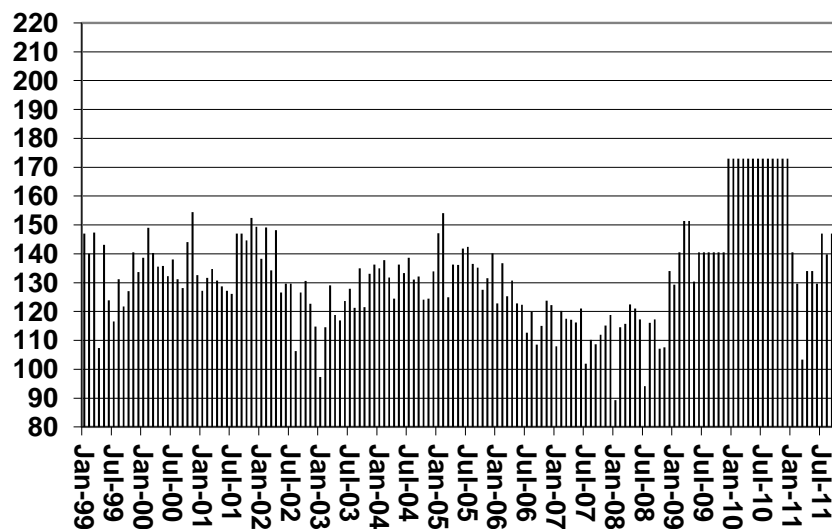


TABLE 6

SUPPLEMENTAL NUTRITION ASSISTANCE PROGRAM: ARIZONA 1/

	CHANGE FROM												
	DECEMBER 2011							NOVEMBER 2011			DECEMBER 2010		
	HOUSEHOLDS	PERSONS	ADULTS	CHILDREN	TOTAL PAYMENTS ISSUANCE	AVERAGE PAYMT./ HOUSEHOLD	AVERAGE PAYMT./ PERSON	HOUSEHOLDS	PERSONS	TOTAL PAYMENTS ISSUANCE	HOUSEHOLDS	PERSONS	TOTAL PAYMENTS ISSUANCE
ARIZONA	490,227	1,137,378	582,975	554,403	144,024,472	293.79	126.63	831	783	(23,657)	29,905	86,692	10,444,810
REGION													
MARICOPA	263,537	617,320	295,374	321,946	79,043,989	299.94	128.04	498	1,090	15,084	16,429	50,350	6,615,231
NORTHERN	56,826	137,273	77,368	59,905	17,056,030	300.14	124.25	348	382	104,124	4,073	10,040	1,162,626
APACHE	10,731	29,096	15,914	13,182	3,572,848	332.95	122.80	9	(70)	(1,263)	803	1,773	212,627
COCONINO	10,279	25,291	13,559	11,732	3,143,517	305.82	124.29	115	249	58,561	748	1,952	273,602
MOHAVE	21,711	46,321	27,793	18,528	5,821,690	268.14	125.68	230	330	46,325	1,428	3,462	391,115
NAVAJO	14,105	36,565	20,102	16,463	4,517,975	320.31	123.56	(6)	(127)	501	1,094	2,853	285,282
CENTRAL	65,566	156,085	84,470	71,615	19,120,536	291.62	122.50	158	(212)	(42,249)	5,094	14,673	1,457,212
GILA	6,260	13,750	7,971	5,779	1,780,924	284.49	129.52	(23)	(24)	(5,033)	204	680	71,234
LA PAZ	2,064	4,295	2,481	1,814	551,482	267.19	128.40	(29)	(50)	(5,775)	34	199	21,188
PINAL	23,888	59,699	30,789	28,910	7,500,013	313.97	125.63	197	266	39,562	2,197	6,743	738,181
YAVAPAI	16,079	32,591	19,529	13,062	4,023,753	250.25	123.46	134	189	38,120	1,332	2,984	356,047
YUMA	17,275	45,750	23,700	22,050	5,264,364	304.74	115.07	(121)	(593)	(109,123)	1,327	4,067	270,562
SOUTHERN	104,298	226,700	125,763	100,937	28,803,917	276.17	127.06	(173)	(477)	(100,616)	4,309	11,629	1,209,741
COCHISE	11,149	24,271	13,873	10,398	2,957,924	265.31	121.87	101	214	37,443	687	1,715	135,643
GRAHAM	3,557	8,171	4,547	3,624	1,014,842	285.31	124.20	18	53	6,665	99	214	(10,192)
GREENLEE	537	1,185	671	514	152,731	284.42	128.89	3	20	2,343	35	102	16,534
PIMA	84,277	180,342	100,134	80,208	23,168,189	274.91	128.47	(268)	(662)	(131,361)	3,224	8,889	990,741
SANTA CRUZ	4,778	12,731	6,538	6,193	1,510,231	316.08	118.63	(27)	(102)	(15,706)	264	709	77,015

1/EXCLUDES: PRIOR MONTH NET TOTALS OF : 6,636 CASES; 16,781 RECIPIENTS; \$1,107,861.

AGED CANCELATIONS: 12,756 CASES; 18,028 RECIPIENTS; \$657,777.

SNAP CONVERSIONS: 0 CASES; 0 RECIPIENTS; \$0.

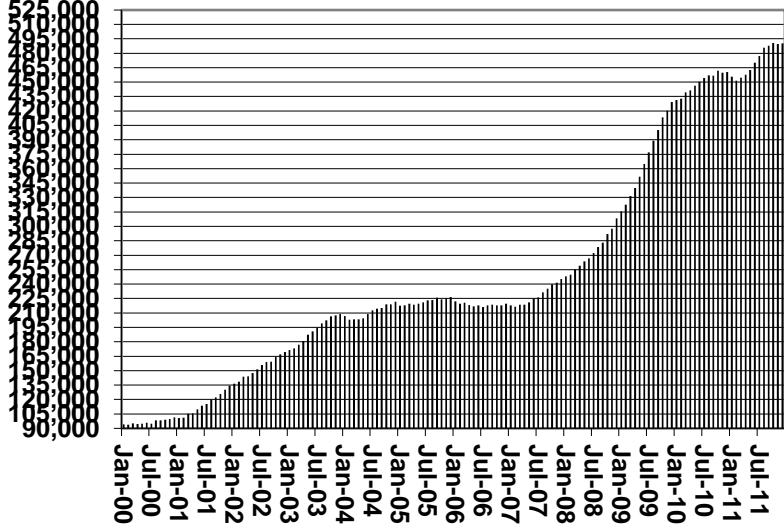
SNAP CHILD ONLY: 63,436 CASES; 150,191 RECIPIENTS; \$22,832,427.

SNAP ZERO PAY: 5,250 CASES; 19,736 RECIPIENTS.

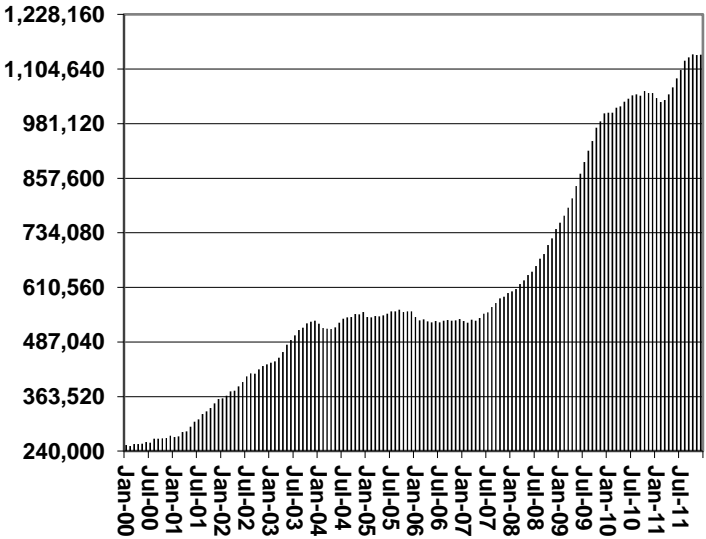
# CHART 6

## SUPPLEMENTAL NUTRITION ASSISTANCE PROGRAM (SNAP) COMPARISON OF HOUSEHOLDS, RECIPIENTS, PAYMENTS & AVERAGE PAYMENTS FOR 1999, 2000, 2001, 2002, 2003, 2004, 2005, 2006, 2007, 2008, 2009, 2010, & 2011

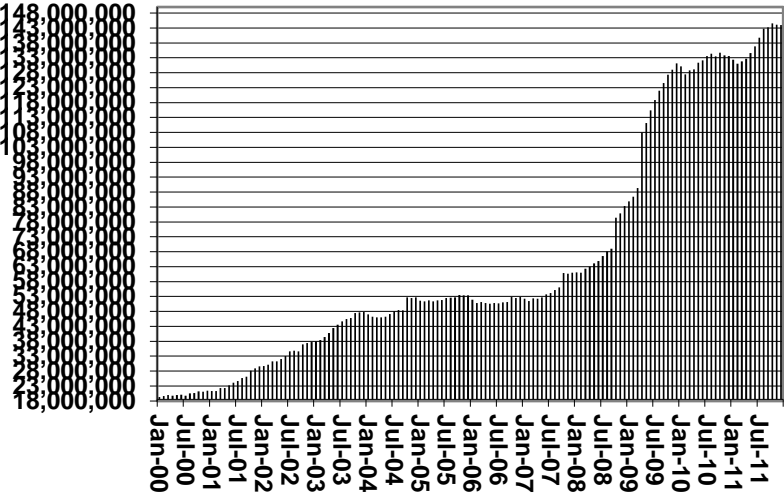
**Households**



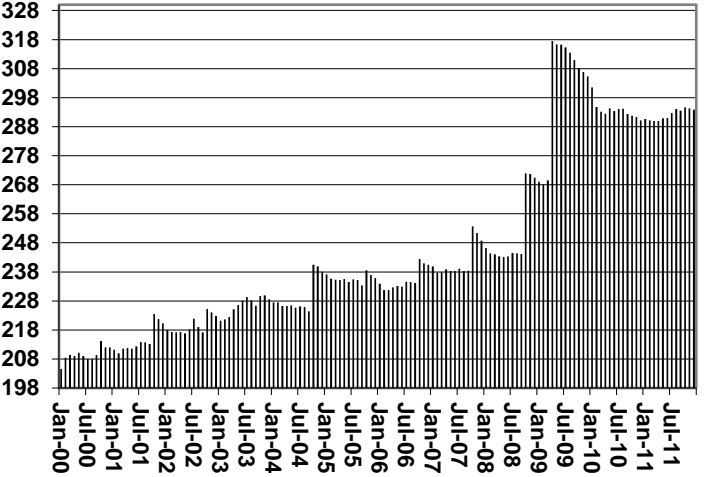
**Recipients**



**Payments**



**Average Payment Per Household**





**TABLE 7A**  
**MEDICAL ASSISTANCE PROGRAM**  
**RECIPIENTS**  
**DECEMBER 2011**

	SOBRA WOMAN 133% FPL	SOBRA CHILD	ADULT W/O CHILD 100% FPL	FOSTER CARE	1931 36% FPL	FEDERAL EMERGENCY SERVICES	ADULT W/O CHILD 40% FPL	MEDICAL W/SPEND DOWN	SOBRA WOMAN 100% FPL	SOBRA CHILD 100% FPL	TRANSITIONAL MEDICAL T1 - T4	1931 100% FPL	YATI	OTHER	TOTAL CASES	
ARIZONA	11,232	55,586	42,125	13,996	373,917	58,926	45,875	122,048	0	4,125	242,489	49,306	124,029	342	29,279	1,173,275
REGION																
MARICOPA	6,461	31,905	20,824	7,819	209,961	47,153	27,555	61,587	0	2,262	144,598	25,403	64,746	176	15,297	665,747
NORTHERN	1,205	5,676	4,915	669	47,528	1,053	4,600	18,842	0	472	23,700	5,602	14,768	19	3,002	132,051
APACHE	180	1,114	680	41	12,107	63	879	4,490	0	83	4,074	1,072	2,591	0	424	27,798
COCONINO	266	1,067	931	133	9,005	421	1,077	3,194	0	95	4,931	1,214	2,962	14	433	25,743
MOHAVE	444	1,816	2,121	348	12,626	361	1,425	5,815	0	174	8,839	1,833	5,407	4	1,603	42,816
NAVAJO	315	1,679	1,183	147	13,790	208	1,219	5,343	0	120	5,856	1,483	3,808	1	542	35,694
CENTRAL	1,666	7,573	6,203	1,602	48,575	3,804	5,919	15,884	0	598	30,302	8,008	18,577	43	4,484	153,238
GILA	113	473	493	106	4,934	102	468	1,923	0	37	1,996	507	1,342	3	353	12,850
LA PAZ	46	169	189	29	1,404	114	142	555	0	10	649	156	354	0	163	3,980
PINAL	553	3,282	1,807	618	20,995	1,210	2,255	6,251	0	224	11,174	2,553	6,326	17	1,378	58,643
YAVAPAI	383	1,540	1,857	537	8,355	1,130	1,150	3,566	0	121	6,287	1,886	3,878	22	1,251	31,963
YUMA	571	2,109	1,857	312	12,887	1,248	1,904	3,589	0	206	10,196	2,906	6,677	1	1,339	45,802
SOUTHERN	1,900	10,432	10,183	3,906	67,853	6,916	7,801	25,735	0	793	43,889	10,293	25,938	104	6,496	222,239
COCHISE	199	991	1,272	253	7,271	420	758	2,348	0	84	4,483	1,048	2,805	7	864	22,803
GRAHAM	93	359	342	84	2,806	27	355	1,046	0	44	1,425	407	875	1	179	8,043
GREENLEE	18	39	47	9	520	6	57	172	0	4	201	29	105	1	29	1,237
PIMA	1,487	8,493	7,882	3,524	53,579	6,043	6,190	21,173	0	610	34,667	8,109	20,178	95	4,949	176,979
SANTA CRUZ	103	550	640	36	3,677	420	441	996	0	51	3,113	700	1,975	0	475	13,177

**TABLE 7B**  
**MEDICAL ASSISTANCE PROGRAM**  
**RECIPIENTS**

**CHANGE FROM**  
**NOVEMBER 2011**

	SOBRA WOMAN 133% FPL	SOBRA CHILD	ADULT W/O CHILD 100% FPL	FOSTER CARE	1931 36% FPL	FEDERAL EMERGENCY SERVICES	INFANTS	ADULT W/O CHILD 40% FPL	MEDICAL W/SPEND DOWN	SOBRA WOMAN 100% FPL	SOBRA CHILD 100% FPL	TRANSITIONAL MEDICAL T1 - T4	1931 100% FPL	YATI	OTHER	TOTAL CASES
ARIZONA	(3)	(2,766)	(3,431)	170	1,473	721	202	(9,456)	0	(43)	943	633	176	(2)	(164)	(11,547)
REGION																
MARICOPA	73	(1,658)	(1,719)	154	1,115	659	286	(5,144)	0	(42)	904	372	249	(5)	(40)	(4,796)
NORTHERN	(8)	(311)	(444)	(10)	403	(2)	24	(1,185)	0	(13)	(79)	(42)	(9)	2	(20)	(1,694)
APACHE	(13)	(50)	(70)	1	50	(2)	14	(285)	0	1	(50)	(9)	(30)	0	(1)	(444)
COCONINO	(5)	(81)	(97)	(2)	169	(6)	9	(205)	0	(6)	(27)	(24)	(15)	2	8	(280)
MOHAVE	(1)	(67)	(164)	(10)	90	12	12	(350)	0	(3)	43	(20)	65	0	(10)	(403)
NAVAJO	11	(113)	(113)	1	94	(6)	(11)	(345)	0	(5)	(45)	11	(29)	0	(17)	(567)
CENTRAL	(26)	(361)	(525)	2	(208)	(29)	(18)	(1,218)	0	(9)	33	121	(39)	(1)	(71)	(2,349)
GILA	1	(29)	(49)	(7)	37	0	0	(145)	0	(7)	(18)	(17)	13	1	0	(220)
LA PAZ	5	(18)	(15)	2	(18)	(2)	(5)	(58)	0	0	16	(1)	12	0	(2)	(84)
PINAL	19	(138)	(146)	5	72	(12)	15	(499)	0	5	65	104	7	1	(37)	(539)
YAVAPAI	(13)	(54)	(114)	1	32	44	8	(269)	0	11	49	(51)	(1)	(2)	(9)	(368)
YUMA	(38)	(122)	(201)	1	(331)	(59)	(36)	(247)	0	(18)	(79)	86	(70)	(1)	(23)	(1,138)
SOUTHERN	(42)	(436)	(743)	24	163	93	(90)	(1,909)	0	21	85	182	(25)	2	(33)	(2,708)
COCHISE	(2)	(69)	(98)	8	77	0	(5)	(145)	0	0	41	(7)	22	0	(18)	(196)
GRAHAM	(4)	(15)	(22)	2	45	0	5	(94)	0	6	(45)	25	(11)	0	7	(101)
GREENLEE	(1)	2	0	0	25	0	(1)	(18)	0	1	(25)	(2)	1	0	(9)	(27)
PIMA	(34)	(325)	(582)	13	(39)	91	(78)	(1,627)	0	12	159	83	11	2	(1)	(2,315)
SANTA CRUZ	(1)	(29)	(41)	1	55	2	(11)	(25)	0	2	(45)	83	(48)	0	(12)	(69)

**TABLE 7C**  
**MEDICAL ASSISTANCE PROGRAM**  
**RECIPIENTS**

**CHANGE FROM**  
**DECEMBER 2010**

	SOBRA WOMAN 133% FPL	SOBRA CHILD	ADULT W/O CHILD 100% FPL	FOSTER CARE	1931 36% FPL	FEDERAL EMERGENCY SERVICES	INFANTS	ADULT W/O CHILD 40% FPL	MEDICAL W/SPEND DOWN	SOBRA WOMAN 100% FPL	SOBRA CHILD 100% FPL	TRANSITIONAL MEDICAL T1 - T4	3E 1931 100% FPL	YATI	OTHER	TOTAL CASES
ARIZONA	646	(15,283)	(22,207)	1,494	36,311	8,616	(1,061)	(50,751)	(6,941)	470	12,706	4,765	(2,379)	(18)	967	(32,665)
REGION																
MARICOPA	835	(8,578)	(10,797)	1,212	22,752	8,168	(432)	(26,390)	(3,756)	410	10,396	2,990	(943)	(23)	679	(3,477)
NORTHERN	34	(2,012)	(2,822)	12	3,886	(22)	(209)	(6,695)	(909)	(46)	398	(96)	(194)	1	(31)	(8,705)
APACHE	(3)	(387)	(413)	7	825	(19)	(77)	(1,246)	(133)	(18)	(191)	(49)	(133)	0	21	(1,816)
COCONINO	(20)	(428)	(764)	4	691	49	(1)	(1,457)	(128)	(11)	113	(66)	(91)	1	(12)	(2,120)
MOHAVE	73	(558)	(969)	5	996	(40)	(53)	(2,370)	(450)	3	478	(65)	99	1	14	(2,836)
NAVAJO	(16)	(639)	(676)	(4)	1,374	(12)	(78)	(1,622)	(198)	(20)	(2)	84	(69)	(1)	(54)	(1,933)
CENTRAL	(63)	(1,904)	(3,601)	53	4,875	(80)	(163)	(6,557)	(1,058)	9	766	1,256	(473)	(1)	124	(6,817)
GILA	(10)	(233)	(304)	7	418	(18)	(57)	(707)	(101)	(1)	(25)	100	(61)	3	(11)	(1,000)
LA PAZ	1	(102)	(87)	12	116	(18)	(13)	(309)	(21)	(6)	(52)	(50)	(65)	0	(1)	(595)
PINAL	(64)	(789)	(1,101)	(20)	2,805	52	15	(2,270)	(351)	39	622	515	83	(1)	104	(361)
YAVAPAI	(12)	(236)	(953)	44	1,055	(6)	(18)	(1,684)	(304)	1	29	314	(319)	1	15	(2,073)
YUMA	22	(544)	(1,156)	10	481	(90)	(90)	(1,587)	(281)	(24)	192	377	(111)	(4)	17	(2,788)
SOUTHERN	(160)	(2,789)	(4,987)	217	4,798	550	(257)	(11,109)	(1,218)	97	1,146	615	(769)	5	195	(13,666)
COCHISE	(38)	(277)	(474)	9	283	(29)	(61)	(984)	(145)	6	145	34	0	4	(36)	(1,563)
GRAHAM	(23)	(131)	(161)	11	74	3	23	(413)	(56)	18	(33)	40	(44)	(1)	12	(681)
GREENLEE	(4)	(16)	(18)	2	90	4	7	(41)	(4)	0	(9)	(29)	(7)	(1)	(12)	(38)
PIMA	(96)	(2,218)	(4,022)	191	4,146	599	(231)	(9,456)	(941)	73	1,103	412	(628)	4	235	(10,829)
SANTA CRUZ	1	(147)	(312)	4	205	(27)	5	(215)	(72)	0	(60)	158	(90)	(1)	(4)	(555)

# CHART 7

## MEDICAL ASSISTANCE PROGRAM

### COMPARISON OF RECIPIENTS

FOR 1999, 2000, 2001, 2002, 2003, 2004, 2005, 2006, 2007, 2008, 2009, 2010, & 2011

Total Recipients

