



---

DEPARTMENT OF ECONOMIC SECURITY

---

*Your Partner For A Stronger Arizona*

State of Arizona

Department of Economic Security

Family Assistance Administration

Statistical Bulletin

January, 2010

Phone: (602) 542-3678

<https://www.azdes.gov/appreports.aspx>

\*\*\*\* STATISTICAL BULLETIN \*\*\*\*  
ARIZONA DEPARTMENT OF ECONOMIC SECURITY  
FAMILY ASSISTANCE ADMINISTRATION  
BOX 6123, PHOENIX, ARIZONA 85005  
PHONE (602) 542-3678

JANUARY 2010

THIS ISSUE OF THE STATISTICAL BULLETIN COMPARES JANUARY 2010 DATA FOR EACH OF THE INDICATED PROGRAMS WITH THE INFORMATION FOR DECEMBER 2009 AND JANUARY 2009. STATEWIDE SUMMARIES OF ACTIVITY WITHIN EACH OF THE SPECIFIC PROGRAMS FOR THIS REPORT PERIOD ARE DISCUSSED BELOW. THE TABLES COMPARE CURRENT AND PRIOR MONTH DATA. DISTRICT AND COUNTY COMPARISONS ARE PROVIDED WITHIN THIS BULLETIN

TANF SUMMARY

COMPARING TO DECEMBER 2009, JANUARY 2010 CASES INCREASED BY 16,746 (77.20%) TO 38,439. RECIPIENTS DECREASED BY 3,803 (4.34%) TO 83,784. PAYMENTS DECREASED BY \$401,288 (4.68%) TO \$8,173,450. AVERAGE PAYMENT PER CASE DECREASED BY \$182.65 (46.21%) TO \$212.63. PAYMENT PER RECIPIENT DECREASED BY \$0.35 (0.36%) TO \$97.55.

COMPARING TO JANUARY 2009, JANUARY 2010 CASES DECREASED BY 1,128 (2.85%). RECIPIENTS DECREASED BY 3,073 (3.54%). TOTAL PAYMENTS DECREASED BY \$2,267,600 (21.72%). THE AVERAGE PAYMENT PER CASE DECREASED BY \$51.25 (19.42%). THE AVERAGE PAYMENT PER RECIPIENT DECREASED BY \$22.66 (18.85%).

CASH ASSISTANCE (CA)

COMPARING TO DECEMBER 2009, JANUARY 2010 CASES DECREASED BY 1,229 (3.28%) TO 36,263. RECIPIENTS DECREASED BY 2,804 (3.49%) TO 77,608. PAYMENTS DECREASED BY \$300,047 (3.72%) TO \$7,770,497. AVERAGE PAYMENT PER CASE DECREASED BY \$0.98 (0.46%) TO \$214.28. PAYMENT PER RECIPIENT DECREASED BY \$0.24 (0.24%) TO \$100.12.

COMPARING TO JANUARY 2009, JANUARY 2010 CASES DECREASED BY 1,053 (2.82%). RECIPIENTS DECREASED BY 2,290 (2.87%). TOTAL PAYMENTS DECREASED BY \$2,086,446 (21.17%). THE AVERAGE PAYMENT PER CASE DECREASED BY \$49.87 (18.88%). THE AVERAGE PAYMENT PER RECIPIENT DECREASED BY \$23.25 (18.85%).

CASH ASSISTANCE UNEMPLOYED PARENT PROGRAM (CA-UP)

COMPARING TO DECEMBER 2009, JANUARY 2010 CASES DECREASED BY 147 (10.67%) TO 1,231. RECIPIENTS DECREASED BY 500 (10.54%) TO 4,244. PAYMENTS DECREASED BY \$39,574 (10.47%) TO \$338,450. AVERAGE PAYMENT PER CASE INCREASED BY \$0.61 (0.22%) TO \$274.94. PAYMENT PER RECIPIENT INCREASED BY \$0.07 (0.08%) TO \$79.75.

COMPARING TO JANUARY 2009, JANUARY 2010 CASES DECREASED BY 248 (16.77%). RECIPIENTS DECREASED BY 1,090 (20.43%). TOTAL PAYMENTS DECREASED BY \$188,000 (35.71%). THE AVERAGE PAYMENT PER CASE DECREASED BY \$81.01 (22.76%). THE AVERAGE PAYMENT PER RECIPIENT DECREASED BY \$18.95 (19.20%).

CASH ASSISTANCE WITH GRANT UNDER \$100 (CA-MOE)

COMPARING TO DECEMBER 2009, JANUARY 2010 CASES DECREASED BY 38 (4.05%) TO 901. RECIPIENTS DECREASED BY 30 (1.63%) TO 1,805. PAYMENTS DECREASED BY \$4,332 (6.53%) TO \$62,023. AVERAGE PAYMENT PER CASE DECREASED BY \$1.83 (2.59%) TO \$68.84. AVERAGE PAYMENT PER RECIPIENT DECREASED BY \$1.80 (4.98%) TO \$34.36.

COMPARING TO JANUARY 2009, JANUARY 2010 CASES INCREASED BY 155 (20.78%). RECIPIENTS INCREASED BY 255 (16.45%). TOTAL PAYMENTS INCREASED BY \$5,852 (10.42%). THE AVERAGE PAYMENT PER CASE DECREASED BY \$6.46 (8.58%). THE AVERAGE PAYMENT PER RECIPIENT DECREASED BY \$1.88 (5.19%).

CASH ASSISTANCE UNEMPLOYED PARENT PROGRAM WITH GRANT UNDER \$100 (CA-UP-MOE) NEW PROGRAM STARTING 7/01

COMPARING TO DECEMBER 2009, JANUARY 2010 CASES DECREASED BY 5 (10.20%) TO 44. RECIPIENTS INCREASED BY 0 (0.00%) TO 127. PAYMENTS DECREASED BY \$280 (10.14%) TO \$2,480. AVERAGE PAYMENT PER CASE INCREASED BY \$0.03 (0.05%) TO \$56.36. PAYMENT PER RECIPIENT DECREASED BY \$2.20 (10.12%) TO \$19.53.

COMPARING TO JANUARY 2009, JANUARY 2010 CASES INCREASED BY 18 (69.23%). RECIPIENTS INCREASED BY 52 (1.88%). TOTAL PAYMENTS INCREASED BY \$994 (66.89%). THE AVERAGE PAYMENT PER CASE DECREASED BY \$0.79 (1.38%). THE AVERAGE PAYMENT PER RECIPIENT DECREASED BY \$0.28 (1.41%).

TUBERCULOSIS CONTROL PROGRAM (TC)

COMPARING TO DECEMBER 2009, JANUARY 2010 CASES INCREASED BY 0 (0.00%) TO 1. RECIPIENTS INCREASED BY 0 (0.00%) TO 1. PAYMENTS INCREASED BY \$0 (0.00%) TO \$173. AVERAGE PAYMENT PER CASE INCREASED BY \$39.63 (22.91%) TO \$212.63. AVERAGE PAYMENT PER RECIPIENT INCREASED BY \$0.00 (0.00%) TO \$173.00.

COMPARING TO JANUARY 2009, JANUARY 2010 CASES DECREASED BY 6 (85.71%). RECIPIENTS DECREASED BY 6 (85.71%). TOTAL PAYMENTS DECREASED BY \$732 (80.88%). THE AVERAGE PAYMENT PER CASE INCREASED BY \$83.34 (64.47%). THE AVERAGE PAYMENT PER RECIPIENT INCREASED BY \$43.71 (33.81%).

SUPPLEMENTAL NUTRITION ASSISTANCE PROGRAM (SNAP)

COMPARING TO DECEMBER 2009, JANUARY 2010 SUPPLEMENTAL NUTRITION ASSISTANCE HOUSEHOLDS INCREASED BY 2,111 (0.49%) TO 431,481. PERSONS RECEIVING SUPPLEMENTAL NUTRITION ASSISTANCE INCREASED BY 1,334 (0.13%) TO 1,005,810. TOTAL COUPON ISSUANCE DECREASED BY \$1,000,891 (0.76%) TO \$130,109,271. THE AVERAGE HOUSEHOLD ALLOTMENT DECREASED BY \$3.81 (1.25%) TO \$301.54. THE AVERAGE ALLOTMENT PER PERSON DECREASED BY \$1.17 (0.89%) TO \$129.36.

COMPARING TO JANUARY 2009, JANUARY 2010 SUPPLEMENTAL NUTRITION ASSISTANCE HOUSEHOLDS INCREASED BY 115,749 (36.66%). PERSONS RECEIVING SUPPLEMENTAL NUTRITION ASSISTANCE INCREASED BY 248,850 (32.87%). TOTAL COUPON ISSUANCE INCREASED BY \$45,177,372 (53.19%). THE AVERAGE ALLOTMENT PER HOUSEHOLD INCREASED BY \$32.54 (12.10%). THE AVERAGE ALLOTMENT PER PERSON INCREASED BY \$17.16 (15.29%).

MEDICAL ASSISTANCE PROGRAM (MA) NEW TABLE INCLUDES PROP. 204 CATEGORIES

COMPARING TO DECEMBER 2009, JANUARY 2010 TOTAL RECIPIENTS TOTAL RECIPIENTS DECREASED BY 4,879 (0.41%). SOBRA WOMEN AT 140% FPL INCREASED BY 1 (0.01%). SOBRA CHILDREN DECREASED BY 443 (0.67%). ADULTS W/O CHILD AT 100% INCREASED BY 942 (1.63%). FOSTER CARE INCREASED BY 5 (0.04%). 1931 AT 36% FPL DECREASED BY 4,124 (1.22%). EMERGENCY SERVICES DECREASED BY 5,882 (6.93%). INFANTS DECREASED BY 350 (0.69%). ADULT W/O CHILD AT 140% INCREASED BY 1,747 (1.13%). MEDICAL W/SPEND DOWN INCREASED BY 82 (1.28%). SOBRA WOMAN AT 100% INCREASED BY 3 (0.08%). SOBRA CHILD AT 100% INCREASED BY 73 (0.03%). TRANSITIONAL MEDICAL INCREASED BY 2,063 (5.05%). 1931 AT 100% INCREASED BY 864 (0.74%). YATI DECREASED BY 5 (1.49%). ALL OTHER CATEGORIES INCREASED BY 145 (0.55%).

COMPARING TO JANUARY 2009, JANUARY 2010 TOTAL RECIPIENTS TOTAL RECIPIENTS INCREASED BY 160,666 (15.65%). SOBRA WOMEN AT 140% FPL DECREASED BY 1,270 (10.98%). SOBRA CHILDREN INCREASED BY 120 (0.18%). ADULTS W/O CHILD AT 100% INCREASED BY 15,481 (35.88%). FOSTER CARE INCREASED BY 773 (7.02%). 1931 AT 36% FPL INCREASED BY 32,923 (10.98%). EMERGENCY SERVICES DECREASED BY 6,959 (8.10%). INFANTS INCREASED BY 1,481 (3.02%). ADULT W/O CHILD AT 140% INCREASED BY 46,823 (42.89%). MEDICAL W/SPEND DOWN INCREASED BY 711 (12.32%). SOBRA WOMAN AT 100% INCREASED BY 161 (4.47%). SOBRA CHILD AT 100% INCREASED BY 42,850 (23.51%). TRANSITIONAL MEDICAL DECREASED BY 814 (1.86%). 1931 AT 100% INCREASED BY 28,007 (31.42%). YATI INCREASED BY 44 (15.33%). ALL OTHER CATEGORIES INCREASED BY 335 (1.29%).

# TANF SUMMARY

## TABLES 1, 1A, 1B, & 1C: ARIZONA 1/

	JANUARY 2010							CHANGE FROM			DECEMBER 2009			JANUARY 2009		
	FAMILIES (CASES)	PERSONS (RECIP.)	ADULTS	CHILDREN	TOTAL PAYMENTS	AVERAGE PAYMENT/ CASE	AVERAGE PAYMENT/ RECIP.	FAMILIES (CASES)	PERSONS (RECIP.)	TOTAL PAYMENTS	FAMILIES (CASES)	PERSONS (RECIP.)	TOTAL PAYMENTS			
ARIZONA	38,439	83,784	20,672	63,112	8,173,450	212.63	97.55	16,746	(3,803)	(401,288)	(1,128)	(3,073)	(2,267,600)			
DISTRICT I																
MARICOPA	23,627	52,287	12,349	39,938	4,976,932	210.65	95.18	10,684	(2,072)	(235,328)	486	685	(1,191,832)			
DISTRICT II																
PIMA	6,284	12,869	3,337	9,532	1,307,806	208.12	101.62	2,714	(996)	(99,921)	(640)	(1,576)	(487,313)			
DISTRICT III																
APACHE	1	4	1	3	335	335.00	83.75	0	(1)	(104)	(70)	(140)	(17,074)			
COCONINO	223	481	117	364	45,957	206.09	95.54	107	(20)	(919)	(42)	(92)	(18,286)			
NAVAJO	1,504	3,943	1,217	2,726	414,694	275.73	105.17	286	(46)	(877)	139	527	33,894			
YAVAPAI	669	1,302	276	1,026	129,608	193.73	99.55	386	(19)	(1,911)	(65)	(163)	(52,389)			
DISTRICT IV																
LA PAZ	169	354	100	254	33,671	199.24	95.12	51	(26)	(823)	(38)	(87)	(18,308)			
MOHAVE	1,170	2,400	674	1,726	239,725	204.89	99.89	460	(86)	(6,758)	(217)	(568)	(117,200)			
YUMA	906	1,970	390	1,580	188,434	207.98	95.65	459	(214)	(24,116)	(179)	(382)	(92,062)			
DISTRICT V																
GILA	733	1,569	565	1,004	179,821	245.32	114.61	172	11	1,797	4	20	(9,856)			
PINAL	1,840	4,030	1,036	2,994	382,367	207.81	94.88	757	(215)	(19,571)	(174)	(477)	(144,303)			
DISTRICT VI																
COCHISE	772	1,500	338	1,162	157,530	204.05	105.02	418	(84)	(8,422)	(196)	(458)	(93,640)			
GRAHAM	267	503	152	351	59,496	222.83	118.28	103	(30)	(2,286)	(80)	(200)	(28,446)			
GREENLEE	29	59	13	46	6,268	216.14	106.24	18	13	1,642	(3)	(8)	(2,373)			
SANTA CRUZ	245	513	107	406	50,806	207.37	99.04	131	(18)	(3,691)	(53)	(154)	(28,412)			

1/EXCLUDES: PRIOR MONTH NET TOTALS OF 1,258 CASES; 3,076 RECIPIENTS; \$238,128.  
 GRANT DIVERSION TOTALS OF: 758 CASES;\$573,028.  
 ZERO PAY TOTALS OF 3,163 CASES; 10,091 RECIPIENTS.  
 TANF CHILD ONLY: 18,930 CASES; 31,842 RECIPIENTS; \$3,643,179.  
 RRP: 767 CASES; 1,368 RECIPIENTS; \$178,138

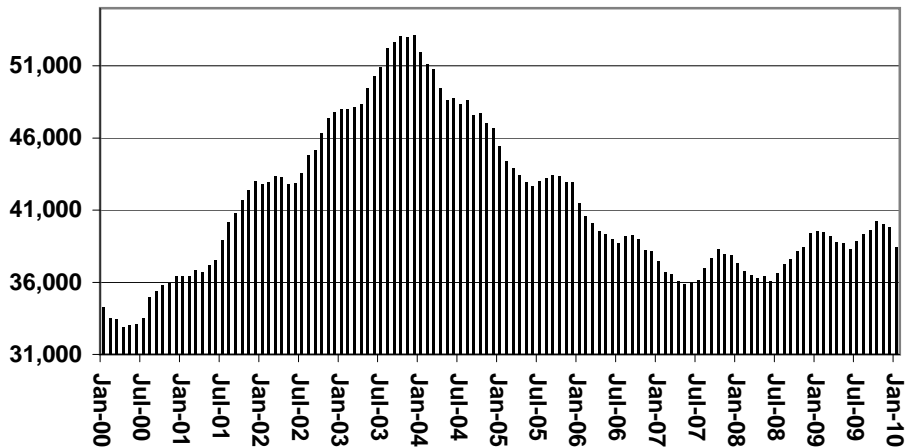
	CURRENT MO. CASES	CURRENT MO. RECIP.	CURRENT MO. DOLLARS	PRIOR MO. CASES	PRIOR MO. RECIP.	PRIOR MO. DOLLARS
PASQUAYQUI	372	1,069	\$111,127	19	52	5,730
WM APACHE	820	2,407	\$261,257	10	29	1,748
SALT RIVER	87	286	\$25,586	6	21	1,285
SAN CARLOS	602	1,346	\$160,932	16	39	2,491
HOPÍ	132	374	\$29,996	15	39	1,803
<b>TOTAL</b>	<b>2,013</b>	<b>5,482</b>	<b>\$588,898</b>	<b>66</b>	<b>180</b>	<b>\$13,057</b>

# TANF SUMMARY

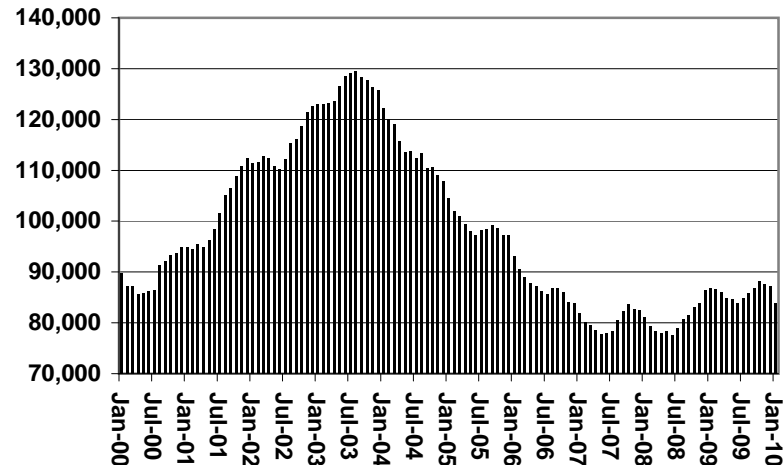
TABLES 1, 1A, 1B, & 1C

COMPARISON OF CASES, RECIPIENTS, PAYMENTS & AVERAGE PAYMENTS  
FOR 2000, 2001, 2002, 2003, 2004, 2005, 2006, 2007, 2008, 2009, & 2010

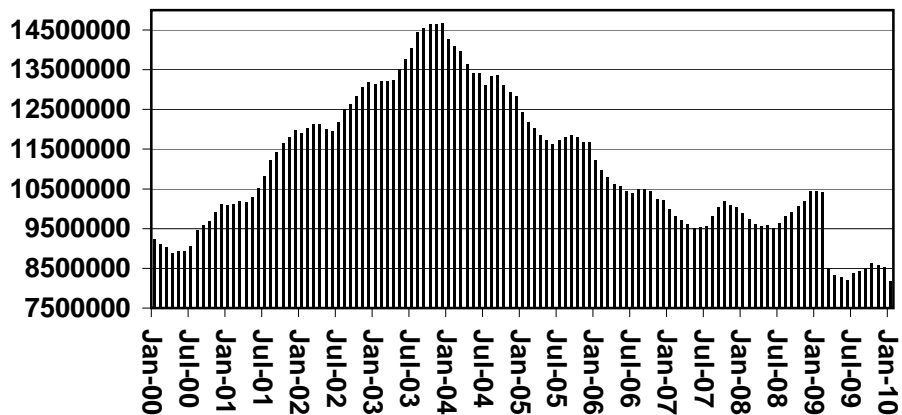
### Cases



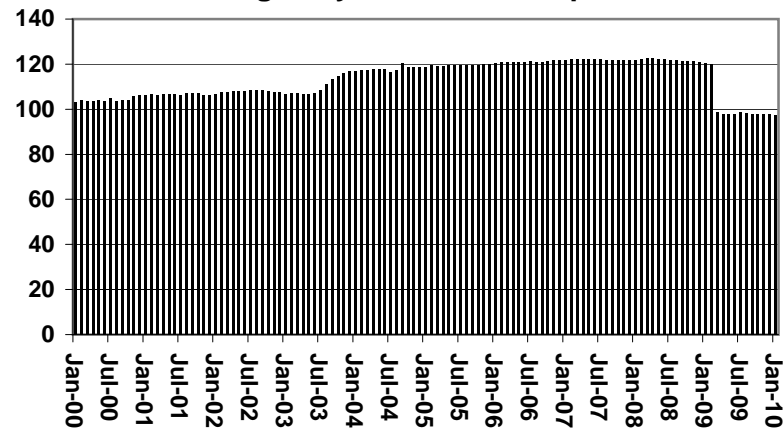
### Recipients



### Payments



### Average Payments Per Recipient



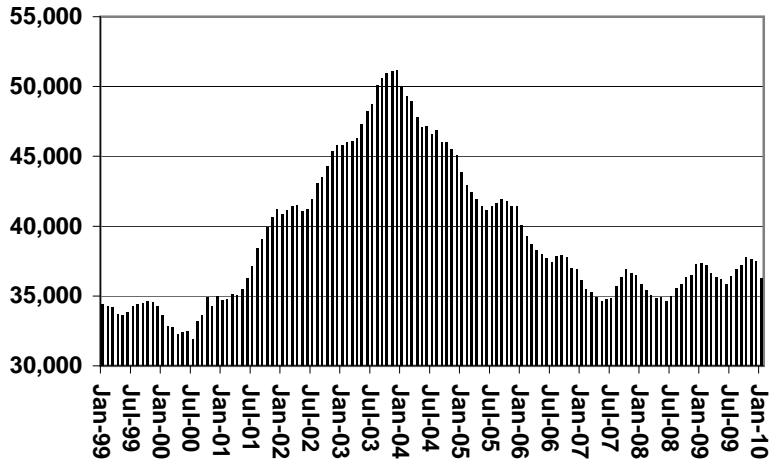
**TABLE 1**  
**CASH ASSISTANCE: ARIZONA 1/**

	JANUARY 2010							CHANGE FROM						
								DECEMBER 2009			JANUARY 2009			
	FAMILIES (CASES)	(RECIP.)	ADULTS	CHILDREN	TOTAL PAYMENTS	AVERAGE PAYMENT/ CASE	AVERAGE PAYMENT/ RECIP.	FAMILIES (CASES)	PERSONS (RECIP.)	TOTAL PAYMENTS	FAMILIES (CASES)	PERSONS (RECIP.)	TOTAL PAYMENTS	
ARIZONA	36,263	77,608	18,608	59,000	7,770,497	214.28	100.12	(1,229)	(2,804)	(300,047)	(1,053)	(2,290)	(2,086,446)	
DISTRICT I														
MARICOPA	22,149	48,126	11,104	37,022	4,703,830	212.37	97.74	(717)	(1,647)	(187,658)	328	570	(1,120,112)	
DISTRICT II														
PIMA	5,934	11,816	2,898	8,918	1,235,936	208.28	104.60	(302)	(656)	(64,918)	(597)	(1,401)	(455,879)	
DISTRICT III														
APACHE	1	4	1	3	335	335.00	83.75	(1)	(3)	(278)	(64)	(126)	(16,230)	
COCONINO	218	468	112	356	45,306	207.83	96.81	(1)	(9)	(977)	(32)	(57)	(15,310)	
NAVAJO	1,467	3,826	1,167	2,659	407,196	277.57	106.43	(6)	(6)	431	195	753	56,970	
YAVAPAI	634	1,217	253	964	124,954	197.09	102.67	(5)	(26)	(2,039)	(51)	(130)	(47,723)	
DISTRICT IV														
LA PAZ	163	340	96	244	33,093	203.02	97.33	(2)	(7)	(782)	(27)	(48)	(15,181)	
MOHAVE	1,115	2,244	608	1,636	230,666	206.88	102.79	(36)	(83)	(8,615)	(173)	(421)	(103,120)	
YUMA	863	1,831	342	1,489	180,843	209.55	98.77	(70)	(177)	(17,682)	(181)	(399)	(90,770)	
DISTRICT V														
GILA	716	1,531	549	982	177,660	248.13	116.04	0	14	1,764	1	23	(9,508)	
PINAL	1,740	3,750	914	2,836	363,739	209.05	97.00	(61)	(123)	(12,644)	(140)	(314)	(125,273)	
DISTRICT VI														
COCHISE	740	1,430	312	1,118	153,281	207.14	107.19	(9)	(24)	(1,915)	(183)	(402)	(87,520)	
GRAHAM	259	485	144	341	58,082	224.25	119.76	(10)	(32)	(2,359)	(76)	(180)	(26,609)	
GREENLEE	28	55	11	44	5,933	211.89	107.87	4	8	878	(3)	(8)	(2,290)	
SANTA CRUZ	236	485	97	388	49,643	210.35	102.36	(13)	(33)	(3,253)	(50)	(150)	(27,891)	
1/EXCLUDES:	PRIOR MONTH NET TOTALS OF: 639 CASES; 1,609 RECIPIENTS; \$168,365.							CURRENT			PRIOR			
	GRANT DIVERSION TOTALS OF: 758 CASES; \$573,028							CURRENT	MO.	CURRENT MO.	PRIOR MO.	MO.	PRIOR	
	ZERO PAY TOTALS OF 1,806 CASES; 5,354 RECIPIENTS.							MO. CASES	RECIP.	DOLLARS	CASES	RECIP.	DOLLARS	
							PASQUA/YAQUI	353	984	103,780	17	44	5,049	
							WM APACHE	813	2,381	259,154	10	29	1,748	
							SALT RIVER	87	286	25,586	6	21	1,285	
							SAN CARLOS	602	1,346	160,932	16	39	2,491	
							HOPI	132	374	29,996	15	39	1,803	
							<b>TOTAL</b>	<b>1,987</b>	<b>5,371</b>	<b>579,448</b>	<b>64</b>	<b>172</b>	<b>12,376</b>	
	CASES WITH GRANT UNDER \$100 (SEE TABLE 1B).													

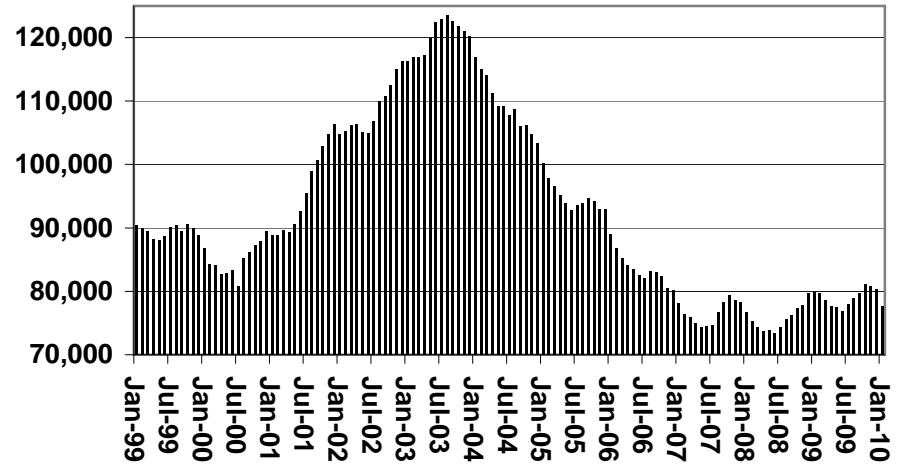
# CHART 1

## CASH ASSISTANCE PROGRAM COMPARISON OF CASES, RECIPIENTS, PAYMENTS & AVERAGE PAYMENTS FOR 1999, 2000, 2001, 2002, 2003, 2004, 2005, 2006, 2007, 2008, 2009, & 2010

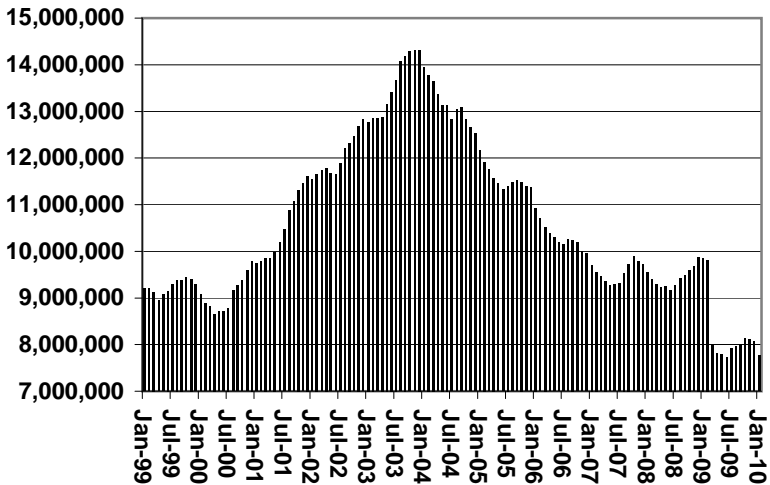
### Cases



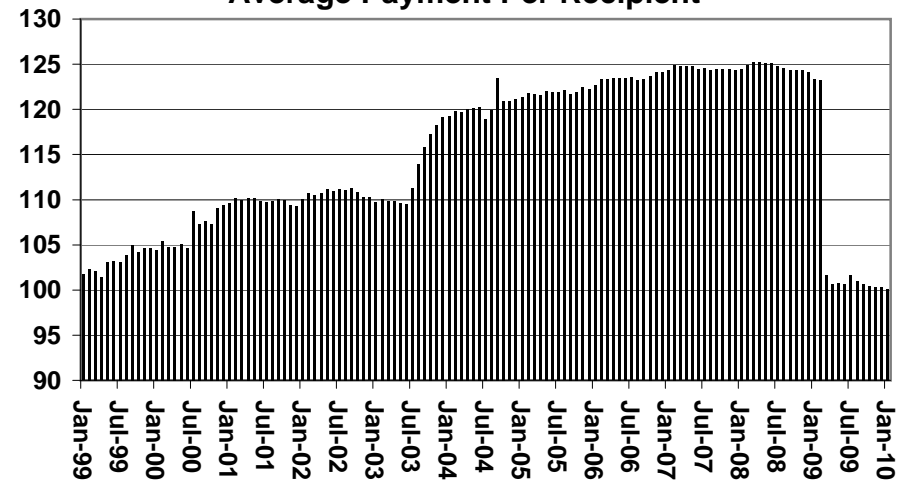
### Recipients



### Payments



### Average Payment Per Recipient



**TABLE 1A  
CA-UP**

**CASH ASSISTANCE UNEMPLOYED PARENT PROGRAM: ARIZONA 1/**

	JANUARY 2010							CHANGE FROM			DECEMBER 2009			JANUARY 2009		
	FAMILIES (CASES)	PERSONS (RECIP.)	ADULTS	CHILDREN	TOTAL PAYMENTS	AVERAGE PAYMENT/ CASE	AVERAGE PAYMENT/ RECIP.	FAMILIES (CASES)	PERSONS (RECIP.)	TOTAL PAYMENTS	FAMILIES (CASES)	PERSONS (RECIP.)	TOTAL PAYMENTS			
ARIZONA	1,231	4,244	1,572	2,672	338,450	274.94	79.75	(147)	(500)	(39,574)	(248)	(1,090)	(188,000)			
DISTRICT I																
MARICOPA	870	2,894	953	1,941	232,489	267.23	80.33	(120)	(407)	(33,039)	(6)	(200)	(80,415)			
DISTRICT II																
PIMA	201	762	352	410	60,903	303.00	79.93	(16)	(52)	(3,577)	(57)	(199)	(31,715)			
DISTRICT III																
APACHE	0	0	0	0	0	0.00	0.00	0	0	0	(3)	(10)	(700)			
COCONINO	1	4	2	2	335	335.00	83.75	(1)	(5)	(392)	(8)	(30)	(2,848)			
NAVAJO	21	80	40	40	6,445	306.90	80.56	1	15	340	(59)	(242)	(23,305)			
YAVAPAI	11	36	8	28	2,813	255.73	78.14	(2)	(5)	(157)	(14)	(39)	(4,815)			
DISTRICT IV																
LA PAZ	2	6	3	3	298	149.00	49.67	(2)	(6)	(507)	(8)	(32)	(2,888)			
MOHAVE	22	87	42	45	6,921	314.59	79.55	0	0	652	(30)	(113)	(12,506)			
YUMA	20	83	30	53	6,121	306.05	73.75	(4)	(16)	(1,330)	0	10	(1,055)			
DISTRICT V																
GILA	7	23	13	10	1,579	225.57	68.65	1	(2)	(50)	1	2	(458)			
PINAL	58	209	98	111	15,692	270.55	75.08	(5)	(22)	(1,697)	(43)	(164)	(18,951)			
DISTRICT VI																
COCHISE	10	32	17	15	2,629	262.90	82.16	(1)	(7)	(403)	(17)	(57)	(6,232)			
GRAHAM	4	13	6	7	1,066	266.50	82.00	1	3	175	(4)	(16)	(1,914)			
GREENLEE	1	4	2	2	335	335.00	83.75	0	0	62	0	0	(83)			
SANTA CRUZ	3	11	6	5	824	274.67	74.91	1	4	349	0	0	(115)			

1/EXCLUDES: PRIOR MONTH NET TOTALS OF: 97 CASES; 383 RECIPIENTS; \$37,733.  
GRANT DIVERSION TOTALS OF: 0 CASES; \$0.  
ZERO PAY TOTALS OF 82 CASES; 366 RECIPIENTS.

	CURRENT			PRIOR MO.		
	MO. CASES	CURRENT MO. RECIP.	CURRENT MO. DOLLARS	PRIOR MO. CASES	PRIOR MO. RECIP.	PRIOR MO. DOLLARS
PASQUA/YAQUI	19	85	7,347	2	8	681
WM APACHE	7	26	2,103	0	0	0
SALT RIVER	0	0	0	0	0	0
SAN CARLOS	0	0	0	0	0	0
HOPÍ	0	0	0	0	0	0
<b>TOTAL</b>	<b>26</b>	<b>111</b>	<b>9,450</b>	<b>2</b>	<b>8</b>	<b>681</b>

CASES WITH GRANT UNDER \$100 (SEE TABLE 1C).

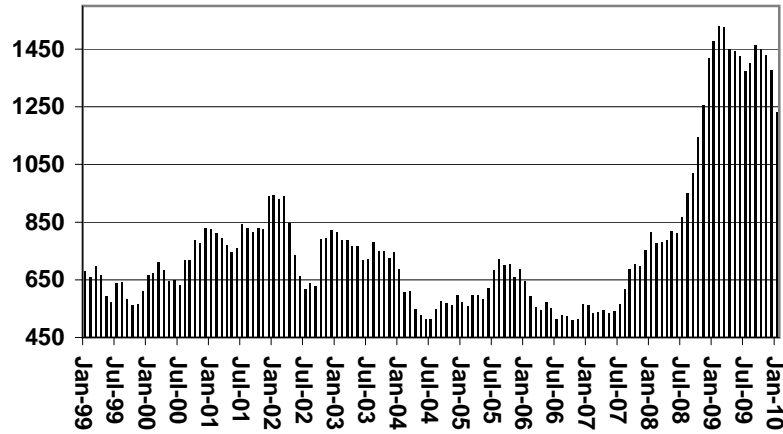
# CHART 1A

## CASH ASSISTANCE UNEMPLOYED PARENT PROGRAM

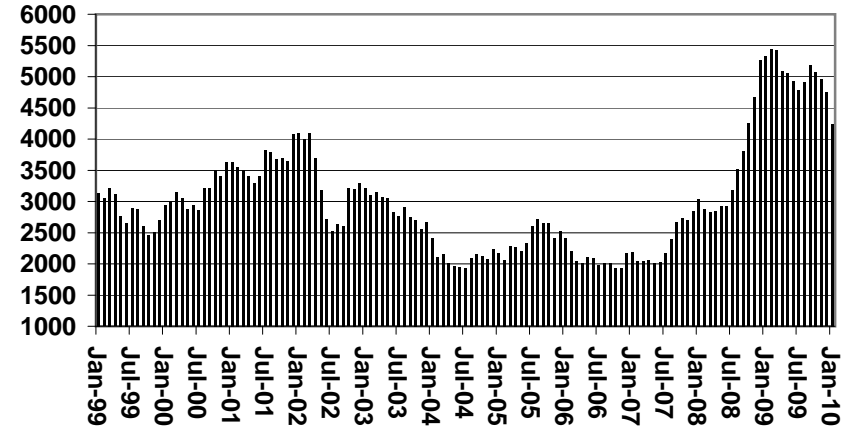
### COMPARISON OF CASES, RECIPIENTS, PAYMENTS & AVERAGE PAYMENTS

FOR 1999, 2000, 2001, 2002, 2003, 2004, 2005, 2006, 2007, 2008, 2009, & 2010

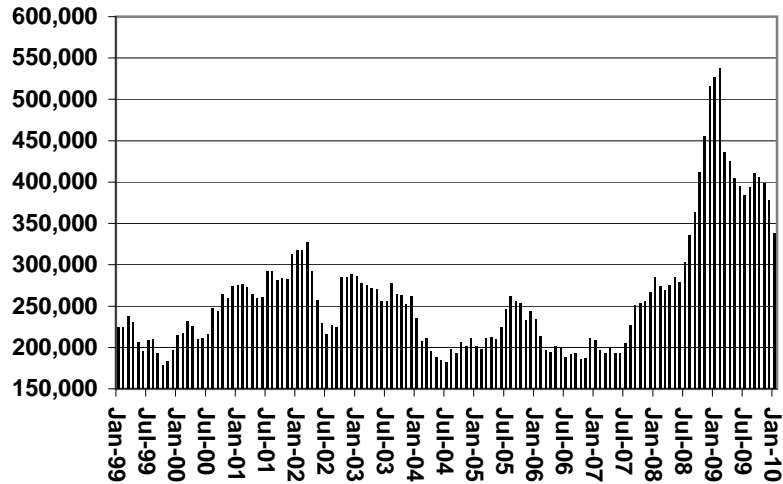
**Cases**



**Recipients**



**Payments**



**Average Payment Per Recipient**

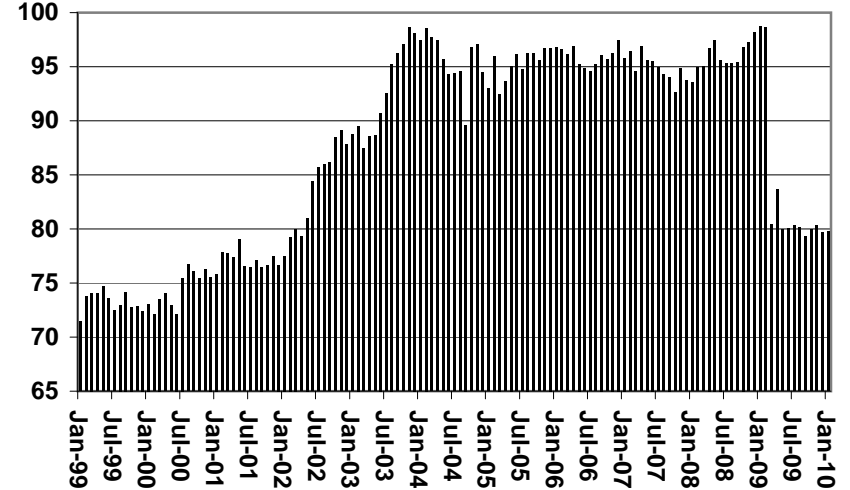




TABLE 1B 1/

CASH ASSISTANCE: ARIZONA  
CASES WITH GRANT UNDER \$100

	JANUARY 2010							CHANGE FROM			DECEMBER 2009			JANUARY 2009		
	FAMILIES (CASES)	PERSONS (RECIP.)	ADULTS	CHILDREN	TOTAL PAYMENTS	AVERAGE PAYMENT/ CASE	AVERAGE PAYMENT/ RECIP.	FAMILIES (CASES)	PERSONS (RECIP.)	TOTAL PAYMENTS	FAMILIES (CASES)	PERSONS (RECIP.)	TOTAL PAYMENTS			
ARIZONA	901	1,805	462	1,343	62,023	68.84	34.36	(38)	(30)	(4,332)	155	255	5,852			
DISTRICT I																
MARICOPA	571	1,160	269	891	38,618	67.63	33.29	(20)	(14)	(1,922)	141	244	7,510			
DISTRICT II																
PIMA	147	284	85	199	10,868	73.93	38.27	(3)	4	(539)	18	37	442			
DISTRICT III																
APACHE	0	0	0	0	0	0.00	0.00	0	0	0	(3)	(4)	(144)			
COCONINO	4	9	3	6	316	79.00	35.11	2	4	138	(2)	(5)	(128)			
NAVAJO	15	34	8	26	980	65.33	28.82	1	8	60	2	13	156			
YAVAPAI	22	44	14	30	1,660	75.45	37.73	(7)	(10)	(197)	(2)	1	(32)			
DISTRICT IV																
LA PAZ	4	8	1	7	280	70.00	35.00	(5)	(15)	(290)	(3)	(7)	(239)			
MOHAVE	33	69	24	45	2,138	64.79	30.99	(3)	0	(265)	(11)	(24)	(1,359)			
YUMA	23	56	18	38	1,470	63.91	26.25	2	11	(307)	2	7	(237)			
DISTRICT V																
GILA	10	15	3	12	582	58.20	38.80	(3)	(4)	(236)	2	(5)	110			
PINAL	40	66	22	44	2,804	70.10	42.48	3	(2)	75	10	5	(10)			
DISTRICT VI																
COCHISE	22	38	9	29	1,620	73.64	42.63	(3)	(6)	(530)	4	1	112			
GRAHAM	4	5	2	3	348	87.00	69.60	(2)	(7)	(189)	0	(4)	77			
GREENLEE	0	0	0	0	0	0.00	0.00	0	0	(98)	0	0	0			
SANTA CRUZ	6	17	4	13	339	56.50	19.94	0	1	(32)	(3)	(4)	(406)			

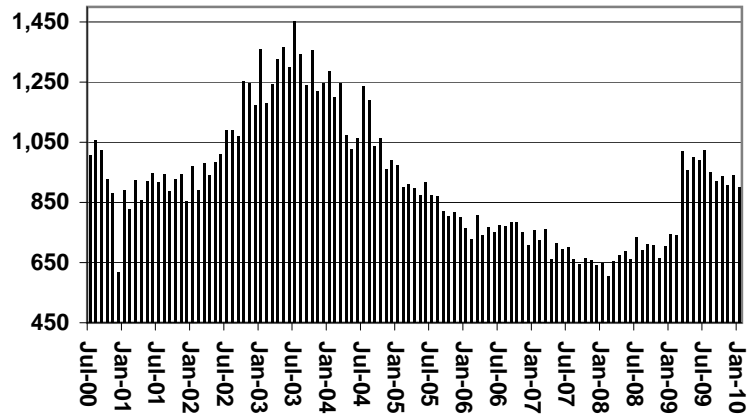
EXCLUDES: PRIOR MONTH NET TOTALS OF 477 CASES; 940 RECIPIENTS; \$29,506.

# CHART 1B

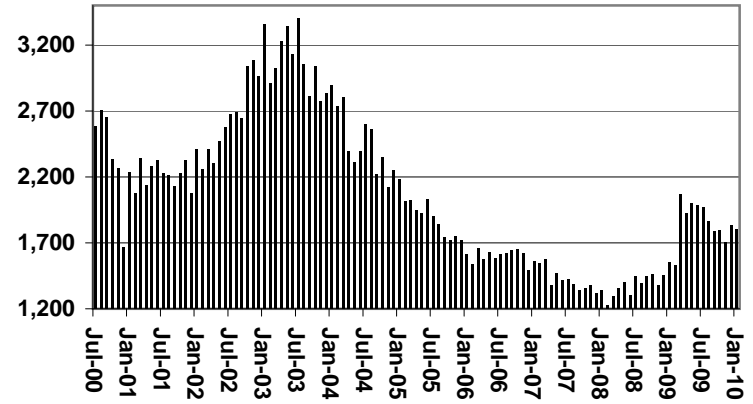
## CASH ASSISTANCE PROGRAM CASES WITH GRANT UNDER \$100

FOR 1999, 2000, 2001, 2002, 2003, 2004, 2005, 2006, 2007, 2008, 2009, & 2010

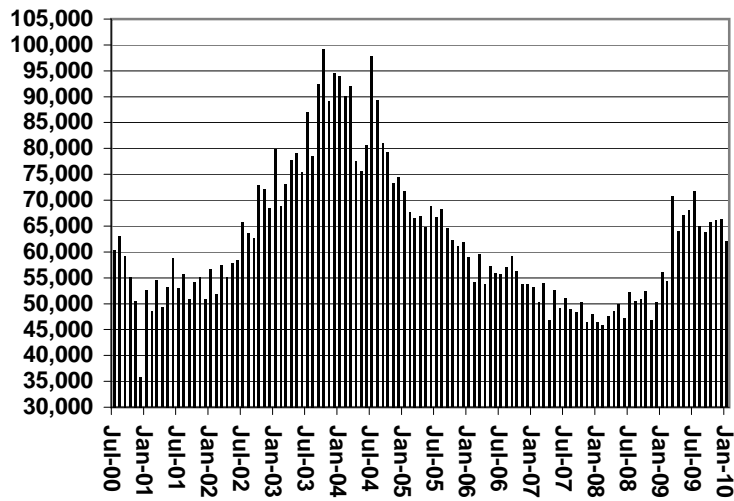
Cases



Recipients



Payments



Average Payment Per Recipient

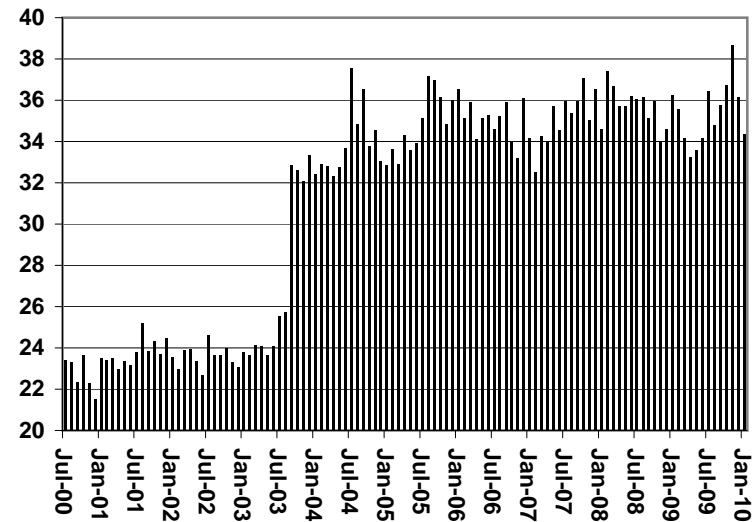


TABLE 1C 1/

CASH ASSISTANCE UNEMPLOYED PARENT PROGRAM: ARIZONA  
CASES WITH GRANT UNDER \$100

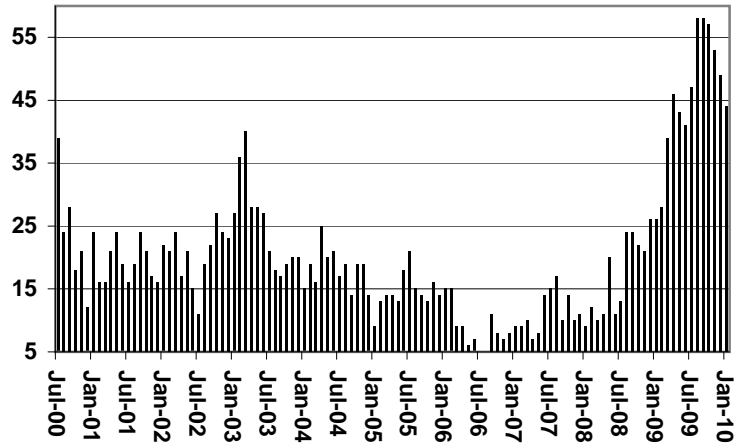
	JANUARY 2010							CHANGE FROM			DECEMBER 2009			JANUARY 2009		
	FAMILIES (CASES)	PERSONS (RECIP.)	ADULTS	CHILDREN	TOTAL PAYMENTS	AVERAGE PAYMENT/ CASE	AVERAGE PAYMENT/ RECIP.	FAMILIES (CASES)	PERSONS (RECIP.)	TOTAL PAYMENTS	FAMILIES (CASES)	PERSONS (RECIP.)	TOTAL PAYMENTS			
ARIZONA	44	127	30	97	2,480	56.36	19.53	(5)	0	(280)	18	52	994			
DISTRICT I																
MARICOPA	37	107	23	84	1,995	53.92	18.64	(5)	2	(350)	23	71	1,185			
DISTRICT II																
PIMA	2	7	2	5	99	49.50	14.14	0	0	0	(4)	(13)	(161)			
DISTRICT III																
APACHE	0	0	0	0	0	0.00	0.00	0	0	0	0	0	0			
COCONINO	0	0	0	0	0	0.00	0.00	0	0	0	0	0	0			
NAVAJO	1	3	2	1	73	73.00	24.33	1	3	73	1	3	73			
YAVAPAI	2	5	1	4	181	90.50	36.20	0	0	18	2	5	181			
DISTRICT IV																
LA PAZ	0	0	0	0	0	0.00	0.00	(1)	(3)	(56)	(3)	(10)	(215)			
MOHAVE	0	0	0	0	0	0.00	0.00	0	0	0	(3)	(10)	(215)			
YUMA	0	0	0	0	0	0.00	0.00	0	0	0	0	0	0			
DISTRICT V																
GILA	2	5	2	3	132	66.00	26.40	0	(2)	35	(1)	(4)	(69)			
PINAL	0	0	0	0	0	0.00	0.00	0	0	0	0	0	0			
DISTRICT VI																
COCHISE	2	5	2	3	132	66.00	26.40	0	(2)	35	(1)	(4)	(69)			
GRAHAM	0	0	0	0	0	0.00	0.00	0	0	0	0	0	0			
GREENLEE	0	0	0	0	0	0.00	0.00	0	0	0	0	0	0			
SANTA CRUZ	0	0	0	0	0	0.00	0.00	0	0	0	0	0	0			

EXCLUDES: PRIOR MONTH NET TOTALS OF 45 CASES; 144 RECIPIENTS; \$2,524.

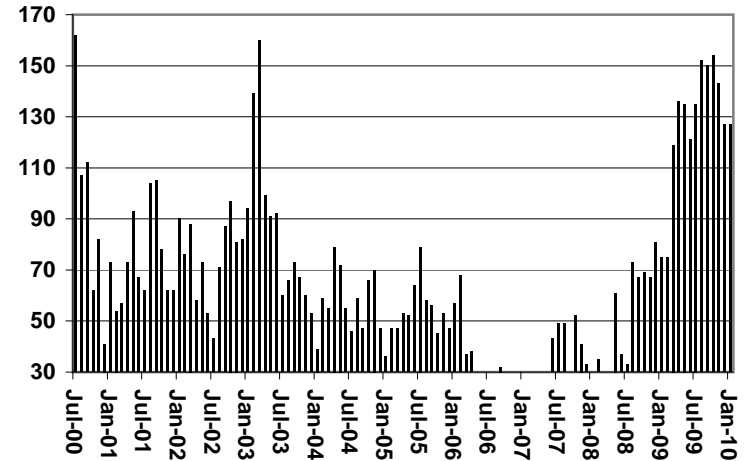
# CHART 1C

## CASH ASSISTANCE UNEMPLOYED PARENT PROGRAM CASES WITH GRANT UNDER \$100 FOR 1999, 2000, 2001, 2002, 2003, 2004, 2005, 2006, 2007, 2008, 2009, & 2010

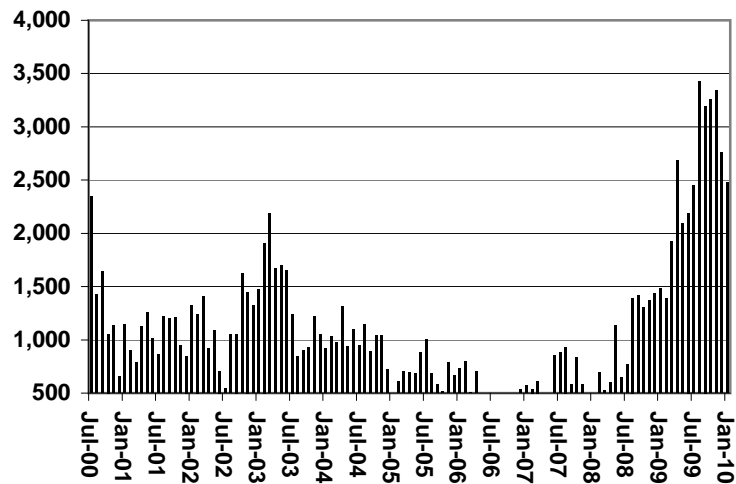
### Cases



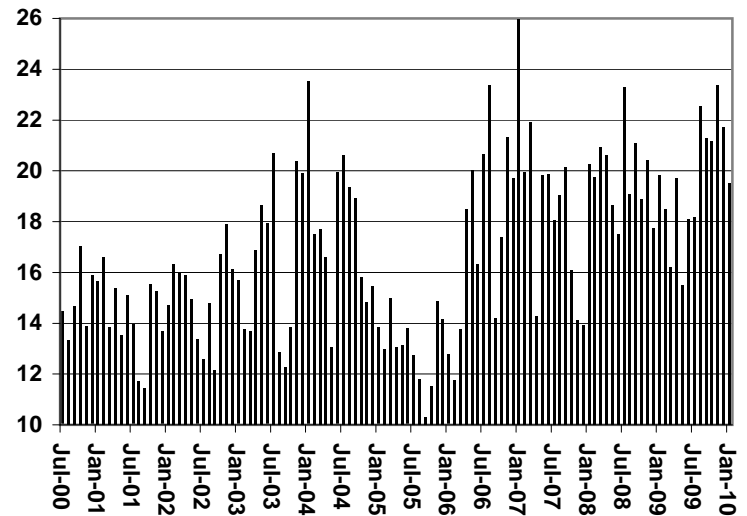
### Recipients



### Payments



### Average Payment Per Recipient



**TABLE 4**  
**TUBERCULOSIS CONTROL: ARIZONA 1/**

	CHANGE FROM											
	JANUARY 2010					DECEMBER 2009			JANUARY 2009			
	NUMBER OF CASES	PERSONS (RECIP.)	TOTAL PAYMENTS	AVERAGE PAYMENT/ CASE	AVERAGE PAYMENT/ RECIP.	NUMBER OF CASES	PERSONS (RECIP.)	TOTAL PAYMENTS	NUMBER OF CASES	PERSONS (RECIP.)	TOTAL PAYMENTS	
ARIZONA	1	1	173	173.00	173.00	0	0	0	(6)	(6)	(732)	
DISTRICT I	1	1	173	173.00	173.00	0	0	0	(5)	(5)	(559)	
MARICOPA												
DISTRICT II	0	0	0	0.00	0.00	0	0	0	0	0	0	
PIMA												
DISTRICT III	0	0	0	0.00	0.00	0	0	0	0	0	0	
APACHE	0	0	0	0.00	0.00	0	0	0	0	0	0	
COCONINO	0	0	0	0.00	0.00	0	0	0	0	0	0	
NAVAJO	0	0	0	0.00	0.00	0	0	0	0	0	0	
YAVAPAI												
DISTRICT IV	0	0	0	0.00	0.00	0	0	0	(1)	(1)	(173)	
LA PAZ	0	0	0	0.00	0.00	0	0	0	0	0	0	
MOHAVE	0	0	0	0.00	0.00	0	0	0	(1)	(1)	(173)	
YUMA												
DISTRICT V	0	0	0	0.00	0.00	0	0	0	0	0	0	
GILA	0	0	0	0.00	0.00	0	0	0	0	0	0	
PINAL												
DISTRICT VI	0	0	0	0.00	0.00	0	0	0	0	0	0	
COCHISE	0	0	0	0.00	0.00	0	0	0	0	0	0	
GRAHAM	0	0	0	0.00	0.00	0	0	0	0	0	0	
GREENLEE	0	0	0	0.00	0.00	0	0	0	0	0	0	
SANTA CRUZ												

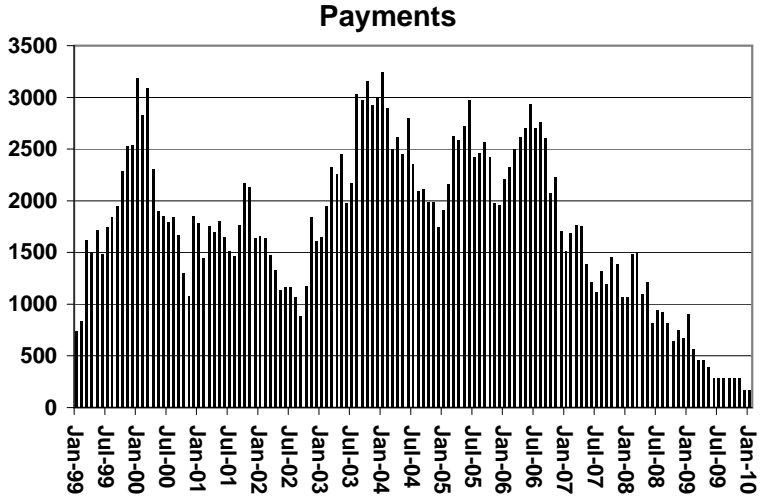
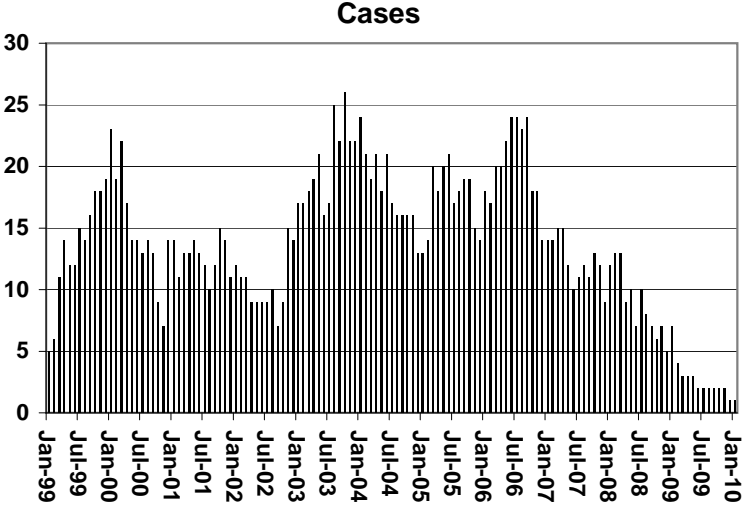
1/EXCLUDES: PRIOR MONTH NET TOTALS OF : 0 CASES; 0 RECIPIENTS; \$0.

# CHART 4

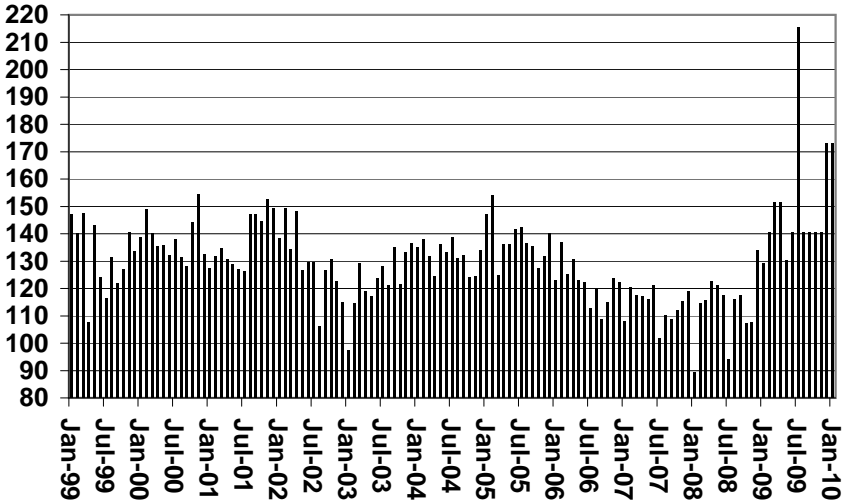
## TUBERCULOSIS CONTROL PROGRAM

### COMPARISON OF CASES, PAYMENTS & AVERAGE PAYMENTS

FOR 1999, 2000, 2001, 2002, 2003, 2004, 2005, 2006, 2007, 2008, 2009, & 2010



### Average Payment Per Case



**TABLE 6**

**SUPPLEMENTAL NUTRITION ASSISTANCE PROGRAM: ARIZONA 1**

	CHANGE FROM												
	JANUARY 2010				DECEMBER 2009			JANUARY 2009					
	HOUSEHOLDS	PERSONS	ADULTS	CHILDREN	TOTAL COUPON ISSUANCE	AVERAGE ALLOT./ HOUSEHOLD	AVERAGE ALLOT./ PERSON	HOUSEHOLDS	PERSONS	TOTAL COUPON ISSUANCE	HOUSEHOLDS	PERSONS	TOTAL COUPON ISSUANCE
ARIZONA	431,481	1,005,810	498,159	507,651	130,109,271	301.54	129.36	2,111	1,334	(1,000,891)	115,749	248,850	45,177,372
DISTRICT I													
MARICOPA	235,789	550,775	253,006	297,769	71,953,328	305.16	130.64	1,709	2,224	(900,972)	72,634	156,926	26,773,447
DISTRICT II													
PIMA	73,668	159,455	85,950	73,505	20,964,534	284.58	131.48	163	(2)	(133,021)	18,772	36,866	7,163,060
DISTRICT III													
APACHE	9,343	27,036	14,198	12,838	2,594,344	277.68	95.96	125	284	(683,649)	2,454	6,593	418,525
COCONINO	9,136	23,172	12,059	11,113	3,128,311	342.42	135.00	20	75	221,668	2,297	3,755	1,083,462
NAVAJO	12,210	32,903	17,553	15,350	4,912,328	402.32	149.30	60	167	824,535	902	1,805	1,612,609
YAVAPAI	13,594	27,938	16,268	11,670	3,515,500	258.61	125.83	173	262	7,441	3,990	8,121	1,314,950
DISTRICT IV													
LA PAZ	1,864	3,863	2,212	1,651	502,309	269.48	130.03	12	(36)	(6,897)	308	588	122,811
MOHAVE	18,938	40,686	23,990	16,696	4,811,029	254.04	118.25	206	280	(346,315)	4,236	10,325	1,361,219
YUMA	14,286	37,668	18,737	18,931	4,396,096	307.72	116.71	(512)	(1,963)	(334,849)	2,530	6,441	1,292,731
DISTRICT V													
GILA	5,481	12,114	7,013	5,101	1,716,512	313.17	141.70	48	76	124,896	1,160	2,361	615,000
PINAL	19,653	48,947	24,972	23,975	6,558,751	333.73	134.00	35	(28)	257,741	3,422	7,712	1,965,141
DISTRICT VI													
COCHISE	9,758	21,332	11,940	9,392	2,647,002	271.26	124.09	87	108	(12,790)	1,439	3,069	687,899
GRAHAM	3,166	7,633	4,182	3,451	893,079	282.08	117.00	33	55	(48,320)	722	1,851	258,300
GREENLEE	523	1,218	670	548	129,463	247.54	106.29	2	(2)	(13,058)	182	480	49,622
SANTA CRUZ	4,072	11,070	5,409	5,661	1,386,685	340.54	125.27	(50)	(166)	42,699	701	1,957	458,596

1/EXCLUDES: PRIOR MONTH NET TOTALS OF : 8,035 CASES; 18,849 RECIPIENTS; \$1,462,976.

AGED CANCELATIONS: 6,999 CASES; 9,274 RECIPIENTS; 343,507.

SNAP COUPON CONVERSIONS: 0 CASES; 0 RECIPIENTS; \$0.

SNAP REINSTATED: 0 CASES; \$0.

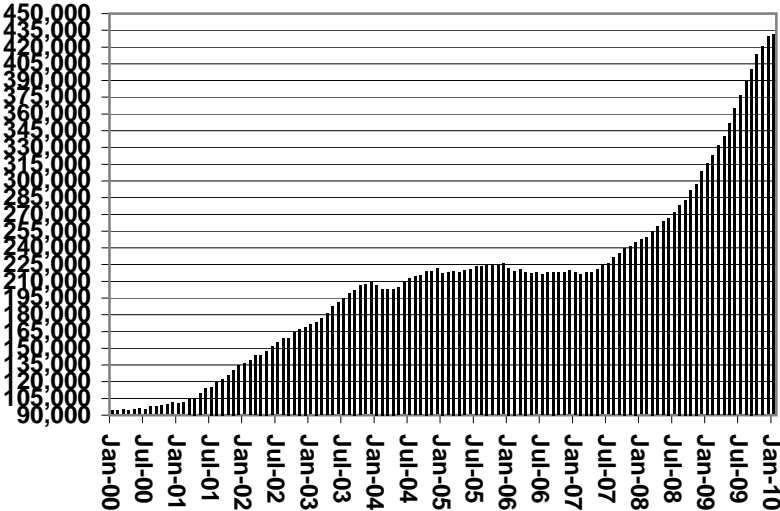
SNAP ZERO PAY: 12,529 CASES; 50,696 RECIPIENTS.

SNAP CHILD ONLY CASES: 45,953 CASES; 105,267 RECIPIENTS;\$16,056,130.

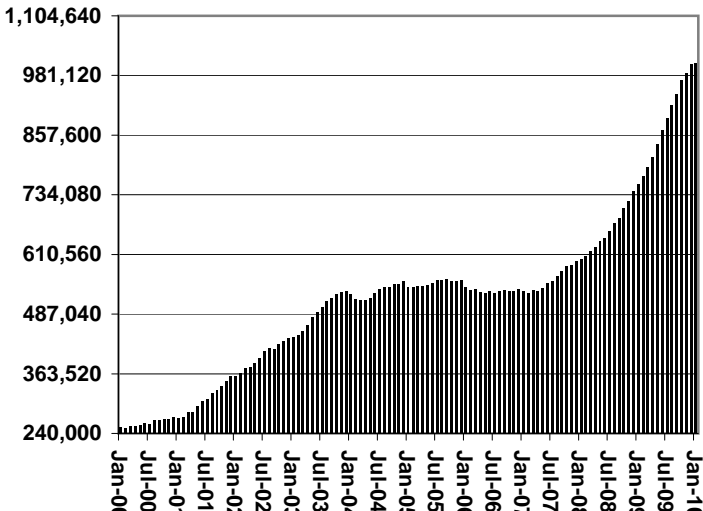
# CHART 6

## SUPPLEMENTAL NUTRITION ASSISTANCE PROGRAM (SNAP) COMPARISON OF HOUSEHOLDS, RECIPIENTS, PAYMENTS & AVERAGE PAYMENTS FOR 1999, 2000, 2001, 2002, 2003, 2004, 2005, 2006, 2007, 2008, 2009, & 2010

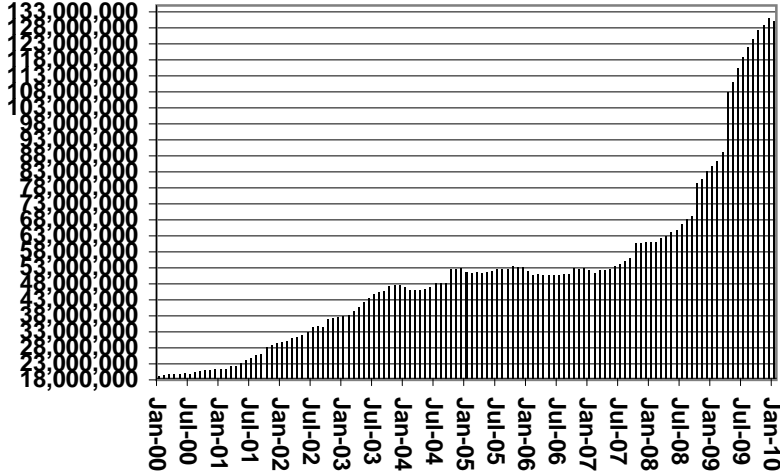
**Households**



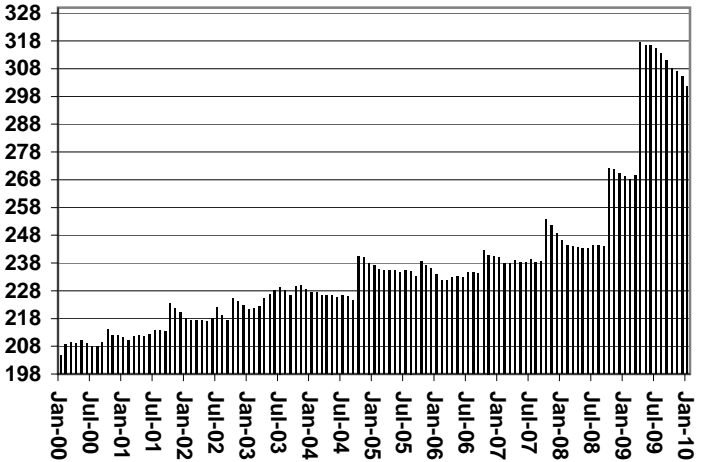
**Recipients**



**Payments**



**Average Payment Per Household**





**TABLE 7A**  
**MEDICAL ASSISTANCE PROGRAM**  
**RECIPIENTS**

**JANUARY 2010**

	SOBRA WOMAN 133% FPL	SOBRA CHILD	ADULT W/O CHILD 100% FPL	FOSTER CARE	1931 36% FPL	FEDERAL EMERGENCY SERVICES	INFANTS	ADULT W/O CHILD 40% FPL	MEDICAL W/SPEND DOWN	SOBRA WOMAN 100% FPL	SOBRA CHILD 100% FPL	TRANSITIONAL MEDICAL T1 - T4	1931 100% FPL	YATI	OTHER	TOTAL CASES
ARIZONA	10,295	65,955	58,633	11,785	332,726	78,992	50,527	155,998	6,484	3,763	225,080	42,921	117,142	331	26,362	1,186,994
DISTRICT I																
MARICOPA	5,545	37,172	28,066	6,091	186,272	61,789	30,109	78,312	3,443	1,924	131,614	21,092	59,682	206	13,456	664,773
DISTRICT II																
PIMA	1,585	10,119	10,885	3,245	49,112	8,905	7,088	27,795	904	545	32,400	6,589	19,194	74	4,497	182,937
DISTRICT III																
APACHE	180	1,412	1,033	45	10,909	124	1,005	5,278	126	103	4,709	819	2,991	1	373	29,108
COCONINO	286	1,408	1,614	136	8,190	470	1,156	4,627	109	116	5,125	1,041	3,114	8	389	27,789
NAVAJO	308	2,259	1,781	135	12,530	368	1,451	6,568	186	137	5,895	1,284	3,974	3	547	37,426
YAVAPAI	382	1,741	2,652	457	7,410	1,605	1,371	5,043	341	126	6,125	1,501	3,931	12	1,177	33,874
DISTRICT IV																
LA PAZ	33	229	267	17	1,254	154	144	802	26	17	692	206	409	0	157	4,407
MOHAVE	409	2,183	3,027	294	11,419	823	1,609	7,334	447	169	8,221	1,736	5,159	6	1,475	44,311
YUMA	524	2,484	2,724	295	11,207	1,722	1,956	4,383	285	220	9,560	3,881	5,925	4	1,241	46,411
DISTRICT V																
GILA	121	658	797	97	4,343	165	552	2,520	104	36	2,004	455	1,343	0	329	13,524
PINAL	510	3,957	2,684	603	17,247	1,611	2,211	7,796	273	189	9,760	2,113	5,619	11	1,300	55,884
DISTRICT VI																
COCHISE	202	1,200	1,657	255	6,722	599	919	3,086	113	83	4,132	1,048	2,733	5	817	23,571
GRAHAM	99	491	487	78	2,469	52	412	1,262	54	39	1,499	469	1,001	0	142	8,554
GREENLEE	11	54	75	8	382	7	66	170	11	10	288	55	176	0	27	1,340
SANTA CRUZ	100	588	884	29	3,260	598	478	1,022	62	49	3,056	632	1,891	1	435	13,085

**TABLE 7B**  
**MEDICAL ASSISTANCE PROGRAM**  
**RECIPIENTS**

**CHANGE FROM**  
**DECEMBER 2009**

	SOBRA WOMAN 133% FPL	SOBRA CHILD	ADULT W/O CHILD 100% FPL	FOSTER CARE	1931 36% FPL	FEDERAL EMERGENCY SERVICES	INFANTS	ADULT W/O CHILD 40% FPL	MEDICAL W/SPEND DOWN	SOBRA WOMAN 100% FPL	SOBRA CHILD 100% FPL	TRANSITIONAL MEDICAL T1 - T4	1931 100% FPL	YATI	OTHER	TOTAL CASES
ARIZONA	1	(443)	942	5	(4,124)	(5,882)	(350)	1,747	82	3	73	2,063	864	(5)	145	(4,879)
DISTRICT I																
MARICOPA	5	(240)	675	41	(2,011)	(4,463)	(131)	1,436	0	32	362	830	797	(4)	238	(2,433)
DISTRICT II																
PIMA	(9)	(16)	183	(39)	(898)	(901)	(60)	181	35	(4)	(76)	149	77	0	(43)	(1,421)
DISTRICT III	(25)	(75)	148	(10)	(78)	(155)	(55)	163	(1)	11	296	(219)	307	(4)	(14)	289
APACHE	(2)	2	45	0	(19)	(5)	(3)	81	16	(1)	81	(121)	97	0	(9)	162
COCONINO	(9)	(9)	10	(3)	(40)	(56)	(37)	107	(24)	9	27	(18)	45	(1)	7	8
NAVAJO	2	(51)	32	(1)	(42)	(13)	2	(9)	2	(3)	134	(38)	91	(1)	(11)	94
YAVAPAI	(16)	(17)	61	(6)	23	(81)	(17)	(16)	5	6	54	(42)	74	(2)	(1)	25
DISTRICT IV	34	(81)	(71)	2	(853)	(229)	(54)	(51)	22	(41)	(474)	1,180	(376)	2	(26)	(1,016)
LA PAZ	2	5	0	0	4	(4)	5	6	(6)	(8)	(4)	14	4	0	(4)	14
MOHAVE	30	(5)	63	(3)	(62)	(41)	(17)	29	12	(14)	12	1	28	2	(1)	34
YUMA	2	(81)	(134)	5	(795)	(184)	(42)	(86)	16	(19)	(482)	1,165	(408)	0	(21)	(1,064)
DISTRICT V	(7)	(39)	41	9	(245)	(105)	(18)	(11)	6	1	52	103	24	1	(13)	(201)
GILA	4	18	21	4	(53)	(9)	(12)	(29)	16	0	(10)	19	24	0	12	5
PINAL	(11)	(57)	20	5	(192)	(96)	(6)	18	(10)	1	62	84	0	1	(25)	(206)
DISTRICT VI	3	8	(34)	2	(39)	(29)	(32)	29	20	4	(87)	20	35	0	3	(97)
COCHISE	(8)	1	1	1	29	(7)	(13)	33	12	(1)	(12)	(40)	45	1	(7)	35
GRAHAM	1	3	(10)	1	(15)	(4)	(9)	29	(10)	3	7	15	3	(1)	2	15
GREENLEE	(1)	(3)	(7)	0	7	0	(4)	7	2	2	9	(9)	(1)	0	3	5
SANTA CRUZ	11	7	(18)	0	(60)	(18)	(6)	(40)	16	0	(91)	54	(12)	0	5	(152)

**TABLE 7C**  
**MEDICAL ASSISTANCE PROGRAM**  
**RECIPIENTS**

**CHANGE FROM**  
**JANUARY 2009**

	SOBRA WOMAN 133% FPL	SOBRA CHILD	ADULT W/O CHILD 100% FPL	FOSTER CARE	1931 36% FPL	FEDERAL EMERGENCY SERVICES	INFANTS	ADULT W/O CHILD 40% FPL	MEDICAL W/SPEND DOWN	SOBRA WOMAN 100% FPL	SOBRA CHILD 100% FPL	TRANSITIONAL MEDICAL T1 - T4	3E 1931 100% FPL	YATI	OTHER	TOTAL CASES
ARIZONA	(1,270)	120	15,481	773	32,923	(6,959)	1,481	46,823	711	161	42,850	(814)	28,007	44	335	160,666
DISTRICT I																
MARICOPA	(437)	75	8,993	477	23,132	(4,903)	943	27,426	481	86	27,711	417	16,885	60	400	101,746
DISTRICT II																
PIMA	(247)	82	2,511	147	4,103	(1,603)	178	8,059	(7)	(15)	4,967	(1,122)	3,830	(18)	(129)	20,736
DISTRICT III	(261)	(291)	1,505	23	2,213	57	228	5,393	1	47	4,364	(292)	3,068	(1)	13	16,067
APACHE	(44)	(9)	107	4	232	28	53	1,115	26	17	832	(202)	608	(2)	(10)	2,755
COCONINO	(71)	(63)	394	0	447	(73)	10	1,401	(54)	6	1,094	(126)	707	3	(5)	3,670
NAVAJO	(98)	(103)	302	2	760	9	61	1,398	16	7	992	(171)	813	(1)	(62)	3,925
YAVAPAI	(48)	(116)	702	17	774	93	104	1,479	13	17	1,446	207	940	(1)	90	5,717
DISTRICT IV	(117)	54	1,192	65	1,416	(245)	14	2,631	115	57	2,560	68	1,826	6	9	9,651
LA PAZ	4	(1)	43	9	12	(10)	(42)	148	(7)	7	70	41	58	0	(7)	325
MOHAVE	(51)	31	744	29	698	(71)	50	1,515	41	17	1,149	(132)	879	3	82	4,984
YUMA	(70)	24	405	27	706	(164)	6	968	81	33	1,341	159	889	3	(66)	4,342
DISTRICT V	(80)	185	825	61	1,320	(173)	47	2,202	99	(21)	1,950	84	1,436	(3)	40	7,972
GILA	(31)	(8)	211	20	276	11	61	348	34	(18)	222	22	228	0	(4)	1,372
PINAL	(49)	193	614	41	1,044	(184)	(14)	1,854	65	(3)	1,728	62	1,208	(3)	44	6,600
DISTRICT VI	(128)	15	455	0	739	(92)	71	1,112	22	7	1,298	31	962	0	2	4,494
COCHISE	(50)	(25)	236	(2)	344	(91)	19	506	(17)	(3)	451	(80)	313	(1)	18	1,618
GRAHAM	(47)	30	80	2	145	0	15	272	25	8	391	48	242	0	(16)	1,195
GREENLEE	(15)	7	28	1	109	(3)	11	48	8	4	116	29	94	0	7	444
SANTA CRUZ	(16)	3	111	(1)	141	2	26	286	6	(2)	340	34	313	1	(7)	1,237

# CHART 7

## MEDICAL ASSISTANCE PROGRAM

### COMPARISON OF RECIPIENTS

FOR 1999, 2000, 2001, 2002, 2003, 2004, 2005, 2006, 2007, 2008, 2009, & 2010

Total Recipients

