



---

DEPARTMENT OF ECONOMIC SECURITY

---

*Your Partner For A Stronger Arizona*

State of Arizona

Department of Economic Security

Family Assistance Administration

Statistical Bulletin

February, 2010

Phone: (602) 542-3678

<https://www.azdes.gov/appreports.aspx>

\*\*\*\* STATISTICAL BULLETIN \*\*\*\*  
ARIZONA DEPARTMENT OF ECONOMIC SECURITY  
FAMILY ASSISTANCE ADMINISTRATION  
BOX 6123, PHOENIX, ARIZONA 85005  
PHONE (602) 542-3678

FEBRUARY 2010

THIS ISSUE OF THE STATISTICAL BULLETIN COMPARES FEBRUARY 2010 DATA FOR EACH OF THE INDICATED PROGRAMS WITH THE INFORMATION FOR JANUARY 2010 AND FEBRUARY 2009. STATEWIDE SUMMARIES OF ACTIVITY WITHIN EACH OF THE SPECIFIC PROGRAMS FOR THIS REPORT PERIOD ARE DISCUSSED BELOW. THE TABLES COMPARE CURRENT AND PRIOR MONTH DATA. DISTRICT AND COUNTY COMPARISONS ARE PROVIDED WITHIN THIS BULLETIN

TANF SUMMARY

COMPARING TO JANUARY 2010, FEBRUARY 2010 CASES DECREASED BY 1,109 (2.89%) TO 37,330. RECIPIENTS DECREASED BY 2,874 (3.43%) TO 80,910. PAYMENTS DECREASED BY \$246,801 (3.02%) TO \$7,926,649. AVERAGE PAYMENT PER CASE DECREASED BY \$0.29 (0.14%) TO \$212.34. PAYMENT PER RECIPIENT INCREASED BY \$0.42 (0.43%) TO \$97.97.

COMPARING TO FEBRUARY 2009, FEBRUARY 2010 CASES DECREASED BY 2,174 (5.50%). RECIPIENTS DECREASED BY 5,776 (6.66%). TOTAL PAYMENTS DECREASED BY \$2,481,804 (23.84%). THE AVERAGE PAYMENT PER CASE DECREASED BY \$51.14 (19.41%). THE AVERAGE PAYMENT PER RECIPIENT DECREASED BY \$22.10 (18.41%).

CASH ASSISTANCE (CA)

COMPARING TO JANUARY 2010, FEBRUARY 2010 CASES DECREASED BY 975 (2.69%) TO 35,288. RECIPIENTS DECREASED BY 2,504 (3.23%) TO 75,104. PAYMENTS DECREASED BY \$227,985 (2.93%) TO \$7,542,512. AVERAGE PAYMENT PER CASE DECREASED BY \$0.54 (0.25%) TO \$213.74. PAYMENT PER RECIPIENT INCREASED BY \$0.31 (0.31%) TO \$100.43.

COMPARING TO FEBRUARY 2009, FEBRUARY 2010 CASES DECREASED BY 1,914 (5.14%). RECIPIENTS DECREASED BY 4,530 (5.69%). TOTAL PAYMENTS DECREASED BY \$2,272,834 (23.16%). THE AVERAGE PAYMENT PER CASE DECREASED BY \$50.10 (18.99%). THE AVERAGE PAYMENT PER RECIPIENT DECREASED BY \$22.83 (18.52%).

CASH ASSISTANCE UNEMPLOYED PARENT PROGRAM (CA-UP)

COMPARING TO JANUARY 2010, FEBRUARY 2010 CASES DECREASED BY 85 (6.90%) TO 1,146. RECIPIENTS DECREASED BY 256 (6.03%) TO 3,988. PAYMENTS DECREASED BY \$17,684 (5.22%) TO \$320,766. AVERAGE PAYMENT PER CASE INCREASED BY \$4.96 (1.80%) TO \$279.90. PAYMENT PER RECIPIENT INCREASED BY \$0.68 (0.86%) TO \$80.43.

COMPARING TO FEBRUARY 2009, FEBRUARY 2010 CASES DECREASED BY 385 (25.15%). RECIPIENTS DECREASED BY 1,460 (26.80%). TOTAL PAYMENTS DECREASED BY \$216,559 (40.30%). THE AVERAGE PAYMENT PER CASE DECREASED BY \$71.07 (20.25%). THE AVERAGE PAYMENT PER RECIPIENT DECREASED BY \$18.20 (18.45%).

CASH ASSISTANCE WITH GRANT UNDER \$100 (CA-MOE)

COMPARING TO JANUARY 2010, FEBRUARY 2010 CASES DECREASED BY 42 (4.66%) TO 859. RECIPIENTS DECREASED BY 94 (5.21%) TO 1,711. PAYMENTS DECREASED BY \$815 (1.31%) TO \$61,208. AVERAGE PAYMENT PER CASE INCREASED BY \$2.41 (3.50%) TO \$71.25. AVERAGE PAYMENT PER RECIPIENT INCREASED BY \$1.41 (4.10%) TO \$35.77.

COMPARING TO FEBRUARY 2009, FEBRUARY 2010 CASES INCREASED BY 116 (15.61%). RECIPIENTS INCREASED BY 182 (11.90%). TOTAL PAYMENTS INCREASED BY \$6,812 (12.52%). THE AVERAGE PAYMENT PER CASE DECREASED BY \$1.96 (2.68%). THE AVERAGE PAYMENT PER RECIPIENT INCREASED BY \$0.19 (0.53%).

CASH ASSISTANCE UNEMPLOYED PARENT PROGRAM WITH GRANT UNDER \$100 (CA-UP-MOE) NEW PROGRAM STARTING 7/01

COMPARING TO JANUARY 2010, FEBRUARY 2010 CASES DECREASED BY 7 (15.91%) TO 37. RECIPIENTS DECREASED BY 20 (15.75%) TO 107. PAYMENTS DECREASED BY \$317 (12.78%) TO \$2,163. AVERAGE PAYMENT PER CASE INCREASED BY \$2.10 (3.73%) TO \$58.46. PAYMENT PER RECIPIENT INCREASED BY \$0.68 (3.48%) TO \$20.21.

COMPARING TO FEBRUARY 2009, FEBRUARY 2010 CASES INCREASED BY 9 (32.14%). RECIPIENTS INCREASED BY 32 (1.29%). TOTAL PAYMENTS INCREASED BY \$777 (56.06%). THE AVERAGE PAYMENT PER CASE INCREASED BY \$8.96 (18.10%). THE AVERAGE PAYMENT PER RECIPIENT INCREASED BY \$1.73 (9.36%).

TUBERCULOSIS CONTROL PROGRAM (TC)

COMPARING TO JANUARY 2010, FEBRUARY 2010 CASES INCREASED BY 0 (0.00%) TO 1. RECIPIENTS INCREASED BY 0 (0.00%) TO 1. PAYMENTS INCREASED BY \$0 (0.00%) TO \$173. AVERAGE PAYMENT PER CASE INCREASED BY \$39.34 (22.74%) TO \$212.34. AVERAGE PAYMENT PER RECIPIENT INCREASED BY \$0.00 (0.00%) TO \$173.00.

COMPARING TO FEBRUARY 2009, FEBRUARY 2010 CASES DECREASED BY 3 (75.00%). RECIPIENTS DECREASED BY 3 (75.00%). TOTAL PAYMENTS DECREASED BY \$389 (69.22%). THE AVERAGE PAYMENT PER CASE INCREASED BY \$71.84 (51.13%). THE AVERAGE PAYMENT PER RECIPIENT INCREASED BY \$32.50 (23.13%).

SUPPLEMENTAL NUTRITION ASSISTANCE PROGRAM (SNAP)

COMPARING TO JANUARY 2010, FEBRUARY 2010 SUPPLEMENTAL NUTRITION ASSISTANCE HOUSEHOLDS INCREASED BY 1,125 (0.26%) TO 432,606. PERSONS RECEIVING SUPPLEMENTAL NUTRITION ASSISTANCE INCREASED BY 195 (0.02%) TO 1,006,005. TOTAL COUPON ISSUANCE DECREASED BY \$2,616,514 (2.01%) TO \$127,492,757. THE AVERAGE HOUSEHOLD ALLOTMENT DECREASED BY \$6.83 (2.27%) TO \$294.71. THE AVERAGE ALLOTMENT PER PERSON DECREASED BY \$2.63 (2.03%) TO \$126.73.

COMPARING TO FEBRUARY 2009, FEBRUARY 2010 SUPPLEMENTAL NUTRITION ASSISTANCE HOUSEHOLDS INCREASED BY 110,028 (34.11%). PERSONS RECEIVING SUPPLEMENTAL NUTRITION ASSISTANCE INCREASED BY 233,471 (30.22%). TOTAL COUPON ISSUANCE INCREASED BY \$41,034,609 (47.46%). THE AVERAGE ALLOTMENT PER HOUSEHOLD INCREASED BY \$26.69 (9.96%). THE AVERAGE ALLOTMENT PER PERSON INCREASED BY \$14.81 (13.24%).

MEDICAL ASSISTANCE PROGRAM (MA) NEW TABLE INCLUDES PROP. 204 CATEGORIES

COMPARING TO JANUARY 2010, FEBRUARY 2010 TOTAL RECIPIENTS TOTAL RECIPIENTS DECREASED BY 6,946 (0.59%). SOBRA WOMEN AT 140% FPL DECREASED BY 248 (2.41%). SOBRA CHILDREN DECREASED BY 812 (1.23%). ADULTS W/O CHILD AT 100% INCREASED BY 446 (0.76%). FOSTER CARE INCREASED BY 69 (0.59%). 1931 AT 36% FPL DECREASED BY 4,919 (1.48%). EMERGENCY SERVICES DECREASED BY 5,083 (6.43%). INFANTS DECREASED BY 513 (1.02%). ADULT W/O CHILD AT 140% INCREASED BY 510 (0.33%). MEDICAL W/SPEND DOWN DECREASED BY 201 (3.10%). SOBRA WOMAN AT 100% INCREASED BY 99 (2.63%). SOBRA CHILD AT 100% INCREASED BY 902 (0.40%). TRANSITIONAL MEDICAL INCREASED BY 1,305 (3.04%). 1931 AT 100% INCREASED BY 1,355 (1.16%). YATI INCREASED BY 10 (3.02%). ALL OTHER CATEGORIES INCREASED BY 134 (0.51%).

COMPARING TO FEBRUARY 2009, FEBRUARY 2010 TOTAL RECIPIENTS TOTAL RECIPIENTS INCREASED BY 143,909 (13.89%). SOBRA WOMEN AT 140% FPL DECREASED BY 1,344 (11.80%). SOBRA CHILDREN INCREASED BY 275 (0.42%). ADULTS W/O CHILD AT 100% INCREASED BY 15,644 (36.02%). FOSTER CARE INCREASED BY 834 (7.57%). 1931 AT 36% FPL INCREASED BY 23,053 (7.56%). EMERGENCY SERVICES DECREASED BY 13,015 (14.97%). INFANTS INCREASED BY 1,649 (3.41%). ADULT W/O CHILD AT 140% INCREASED BY 45,812 (41.39%). MEDICAL W/SPEND DOWN INCREASED BY 610 (10.75%). SOBRA WOMAN AT 100% INCREASED BY 182 (4.95%). SOBRA CHILD AT 100% INCREASED BY 41,484 (22.48%). TRANSITIONAL MEDICAL INCREASED BY 802 (1.85%). 1931 AT 100% INCREASED BY 27,535 (30.27%). YATI INCREASED BY 49 (16.78%). ALL OTHER CATEGORIES INCREASED BY 339 (1.30%).

# TANF SUMMARY

## TABLES 1, 1A, 1B, & 1C: ARIZONA 1/

	FEBRUARY 2010							JANUARY 2010			FEBRUARY 2009		
	FAMILIES (CASES)	PERSONS (RECIP.)	ADULTS	CHILDREN	TOTAL PAYMENTS	AVERAGE	AVERAGE	FAMILIES (CASES)	PERSONS (RECIP.)	TOTAL PAYMENTS	FAMILIES (CASES)	PERSONS (RECIP.)	TOTAL PAYMENTS
						PAYMENT/ CASE	PAYMENT/ RECIP.						
ARIZONA	37,330	80,910	19,835	61,075	7,926,649	212.34	97.97	(1,109)	(2,874)	(246,801)	(2,174)	(5,776)	(2,481,804)
DISTRICT I													
MARICOPA	22,993	50,680	11,943	38,737	4,842,942	210.63	95.56	(634)	(1,607)	(133,990)	(275)	(1,228)	(1,358,452)
DISTRICT II													
PIMA	6,042	12,266	3,126	9,140	1,250,040	206.89	101.91	(242)	(603)	(57,766)	(801)	(2,013)	(517,602)
DISTRICT III													
APACHE	3	14	5	9	911	303.67	65.07	2	10	576	(72)	(147)	(18,265)
COCONINO	209	445	99	346	42,726	204.43	96.01	(14)	(36)	(3,231)	(58)	(128)	(22,298)
NAVAJO	1,478	3,856	1,202	2,654	406,517	275.05	105.42	(26)	(87)	(8,177)	125	474	28,795
YAVAPAI	631	1,209	246	963	123,672	195.99	102.29	(38)	(93)	(5,936)	(116)	(275)	(59,674)
DISTRICT IV													
LA PAZ	168	342	98	244	33,026	196.58	96.57	(1)	(12)	(645)	(29)	(80)	(16,051)
MOHAVE	1,137	2,308	636	1,672	232,767	204.72	100.85	(33)	(92)	(6,958)	(233)	(599)	(118,910)
YUMA	878	1,893	375	1,518	184,402	210.03	97.41	(28)	(77)	(4,032)	(155)	(307)	(79,013)
DISTRICT V													
GILA	728	1,532	543	989	174,005	239.02	113.58	(5)	(37)	(5,816)	17	11	(10,963)
PINAL	1,789	3,907	994	2,913	370,517	207.11	94.83	(51)	(123)	(11,850)	(188)	(519)	(144,804)
DISTRICT VI													
COCHISE	768	1,494	327	1,167	156,974	204.39	105.07	(4)	(6)	(556)	(215)	(495)	(96,389)
GRAHAM	258	474	141	333	57,602	223.26	121.52	(9)	(29)	(1,894)	(107)	(264)	(35,101)
GREENLEE	22	46	13	33	4,709	214.05	102.37	(7)	(13)	(1,559)	(11)	(27)	(4,272)
SANTA CRUZ	226	444	87	357	45,839	202.83	103.24	(19)	(69)	(4,967)	(56)	(179)	(28,805)

1/EXCLUDES: PRIOR MONTH NET TOTALS OF 1,208 CASES; 2,800 RECIPIENTS; \$212,010.  
 GRANT DIVERSION TOTALS OF: 793 CASES; \$598,447.  
 ZERO PAY TOTALS OF 1,911 CASES; 5,775 RECIPIENTS.

TANF CHILD ONLY: 18,630 CASES; 31,133 RECIPIENTS; \$3,578,990.  
 RRP: 718 CASES; 1,306 RECIPIENTS; \$158,392.

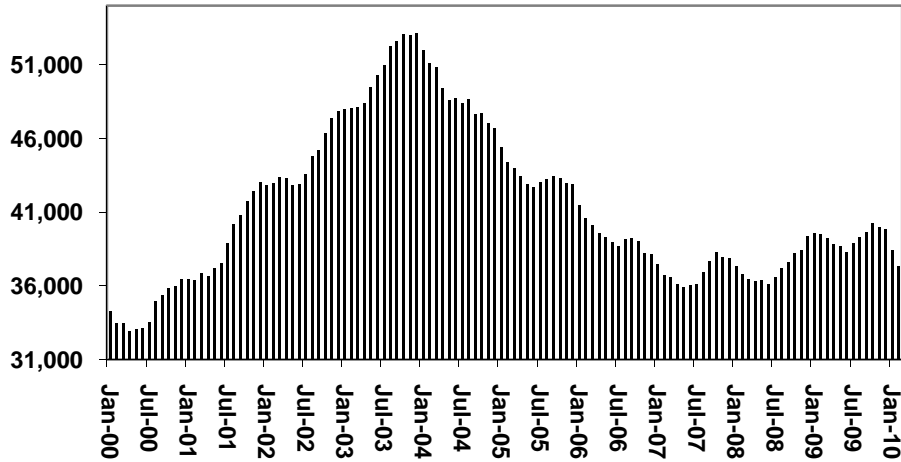
	CURRENT MO. CASES	CURRENT MO. RECIP.	CURRENT MO. DOLLARS	PRIOR MO. CASES	PRIOR MO. RECIP.	PRIOR MO. DOLLARS
PASQUAYQUI	353	988	\$103,172	13	39	\$4,797
WM APACHE	807	2,363	\$256,757	8	19	\$942
SALT RIVER	84	274	\$26,088	4	9	\$469
SAN CARLOS	588	1,295	\$152,841	18	39	\$3,955
HOPÍ	133	384	\$30,472	7	18	\$862
<b>TOTAL</b>	<b>1,965</b>	<b>5,304</b>	<b>\$569,330</b>	<b>50</b>	<b>124</b>	<b>\$11,025</b>

# TANF SUMMARY

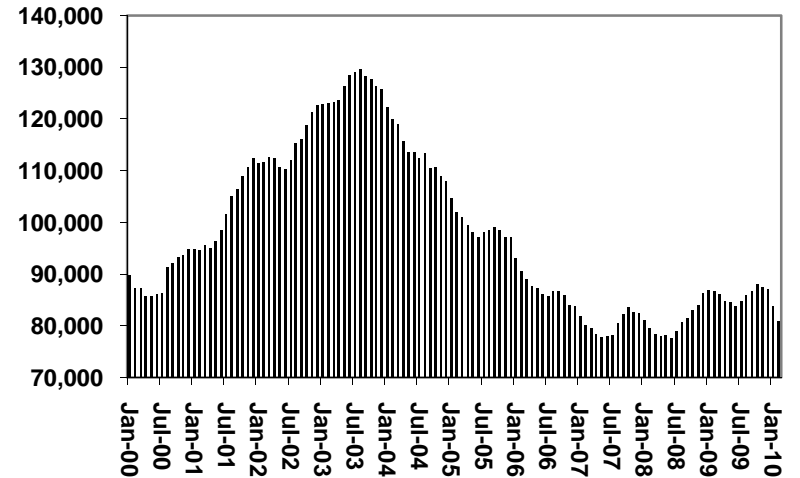
TABLES 1, 1A, 1B, & 1C

COMPARISON OF CASES, RECIPIENTS, PAYMENTS & AVERAGE PAYMENTS  
FOR 2000, 2001, 2002, 2003, 2004, 2005, 2006, 2007, 2008, 2009, & 2010

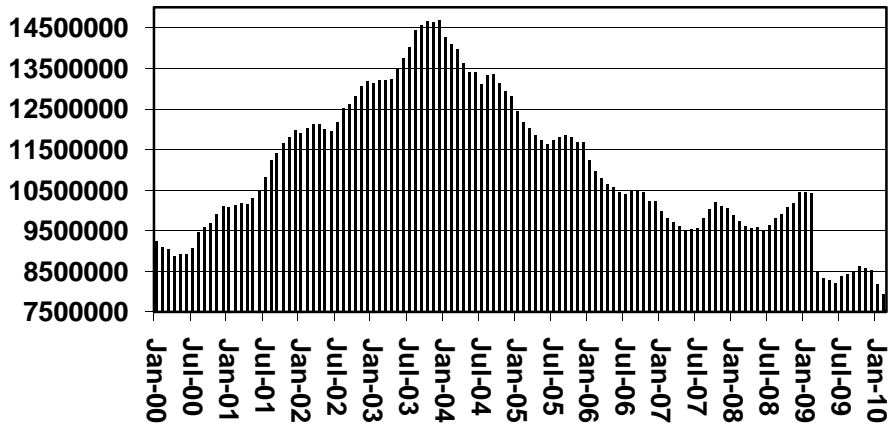
### Cases



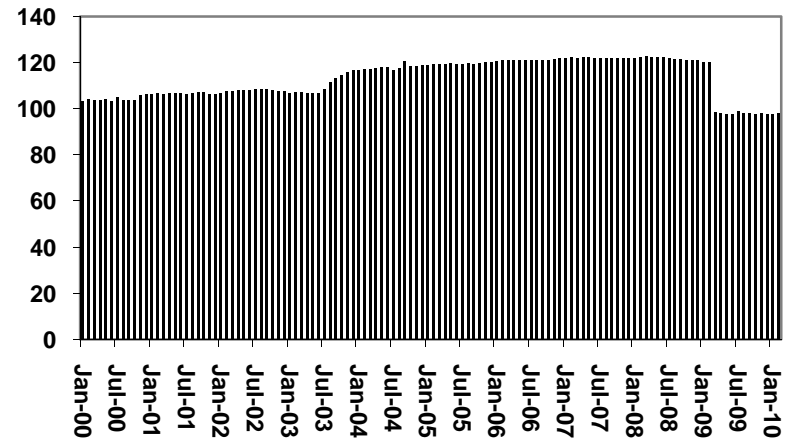
### Recipients



### Payments



### Average Payments Per Recipient





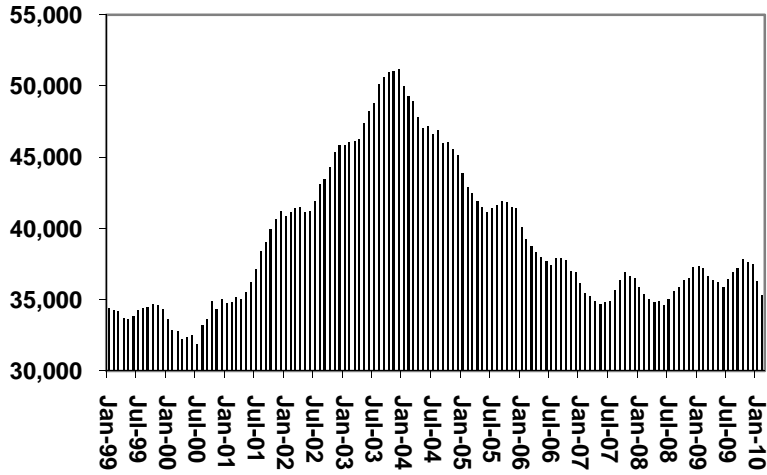
# CHART 1

## CASH ASSISTANCE PROGRAM

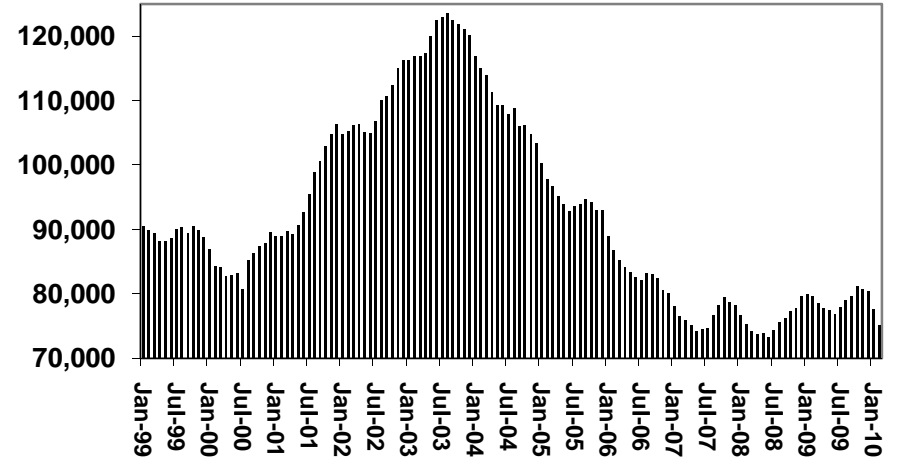
### COMPARISON OF CASES, RECIPIENTS, PAYMENTS & AVERAGE PAYMENTS

FOR 1999, 2000, 2001, 2002, 2003, 2004, 2005, 2006, 2007, 2008, 2009, & 2010

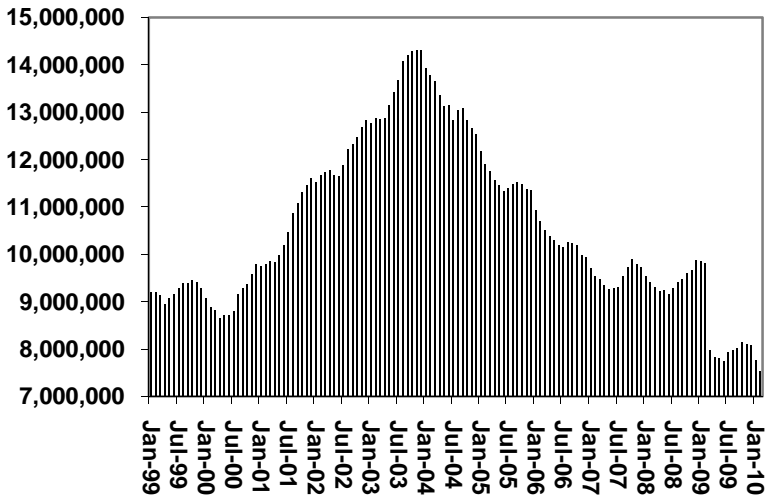
#### Cases



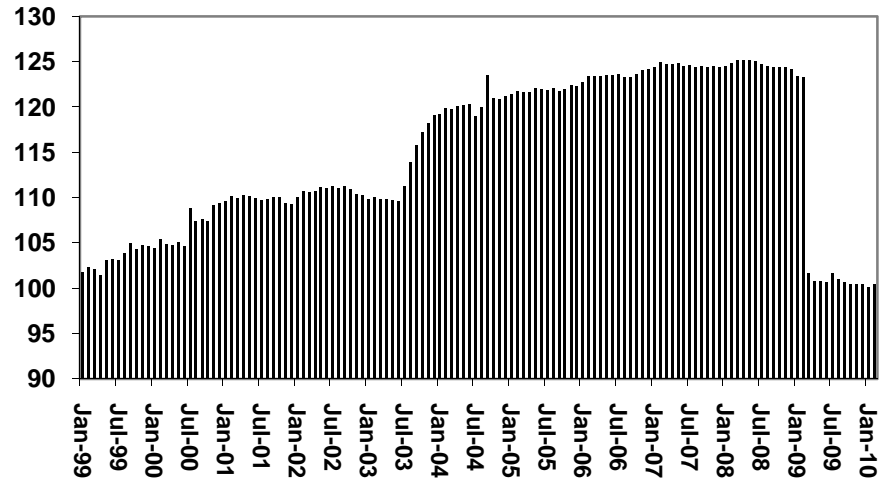
#### Recipients



#### Payments



#### Average Payment Per Recipient



**TABLE 1A  
CA-UP**

**CASH ASSISTANCE UNEMPLOYED PARENT PROGRAM: ARIZONA 1/**

	FEBRUARY 2010							CHANGE FROM			FEBRUARY 2009		
	FAMILIES (CASES)	PERSONS (RECIP.)	ADULTS	CHILDREN	TOTAL PAYMENTS	AVERAGE PAYMENT/ CASE	AVERAGE PAYMENT/ RECIP.	FAMILIES (CASES)	PERSONS (RECIP.)	TOTAL PAYMENTS	FAMILIES (CASES)	PERSONS (RECIP.)	TOTAL PAYMENTS
ARIZONA	1,146	3,988	1,493	2,495	320,766	279.90	80.43	(85)	(256)	(17,684)	(385)	(1,460)	(216,559)
DISTRICT I													
MARICOPA	806	2,717	906	1,811	221,617	274.96	81.57	(64)	(177)	(10,872)	(122)	(512)	(101,701)
DISTRICT II													
PIMA	182	686	318	368	55,033	302.38	80.22	(19)	(76)	(5,870)	(102)	(370)	(48,498)
DISTRICT III													
APACHE	2	11	4	7	633	316.50	57.55	2	11	633	(1)	0	(395)
COCONINO	1	4	2	2	335	335.00	83.75	0	0	0	(6)	(24)	(2,172)
NAVAJO	18	67	34	33	5,733	318.50	85.57	(3)	(13)	(712)	(51)	(194)	(18,863)
YAVAPAI	8	27	6	21	1,987	248.38	73.59	(3)	(9)	(826)	(15)	(38)	(4,727)
DISTRICT IV													
LA PAZ	2	6	3	3	316	158.00	52.67	0	0	18	(7)	(31)	(3,018)
MOHAVE	22	88	43	45	6,818	309.91	77.48	0	1	(103)	(26)	(90)	(9,849)
YUMA	19	76	30	46	5,640	296.84	74.21	(1)	(7)	(481)	4	26	264
DISTRICT V													
GILA	6	18	11	7	1,219	203.17	67.72	(1)	(5)	(360)	(2)	(13)	(1,718)
PINAL	60	226	103	123	16,569	276.15	73.31	2	17	877	(42)	(167)	(19,310)
DISTRICT VI													
COCHISE	12	35	17	18	2,698	224.83	77.09	2	3	69	(14)	(44)	(5,742)
GRAHAM	3	9	6	3	731	243.67	81.22	(1)	(4)	(335)	(3)	(12)	(1,521)
GREENLEE	2	7	4	3	613	306.50	87.57	1	3	278	1	3	195
SANTA CRUZ	3	11	6	5	824	274.67	74.91	0	0	0	1	6	496

1/EXCLUDES: PRIOR MONTH NET TOTALS OF: 96 CASES; 358 RECIPIENTS; \$40,259.  
GRANT DIVERSION TOTALS OF: 0 CASES; \$0.  
ZERO PAY TOTALS OF 76 CASES; 339 RECIPIENTS.

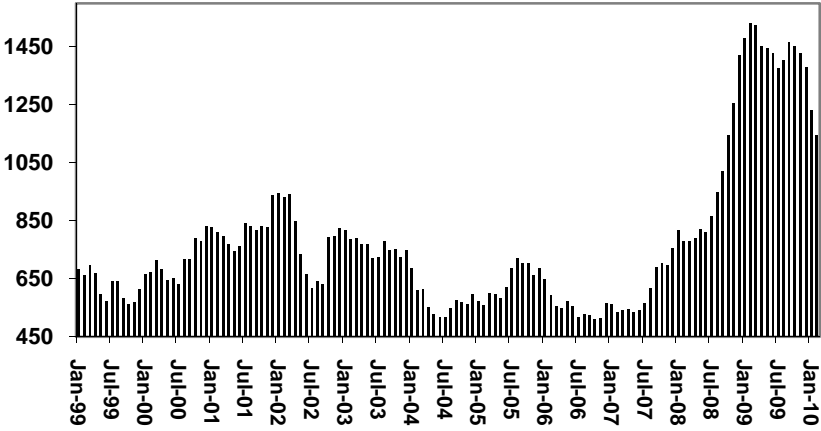
	CURRENT MO. CASES	CURRENT MO. RECIP.	CURRENT MO. DOLLARS	PRIOR MO. CASES	PRIOR MO. RECIP.	PRIOR MO. DOLLARS
PASQUA/YAQUI	19	85	\$7,530	3	10	\$1,272
WM APACHE	9	34	\$2,962	1	3	\$69
SALT RIVER	0	0	\$0	0	0	\$0
SAN CARLOS	0	0	\$0	0	0	\$0
HOPi	0	0	\$0	0	0	\$0
<b>TOTAL</b>	<b>28</b>	<b>119</b>	<b>\$10,492</b>	<b>4</b>	<b>13</b>	<b>\$1,341</b>

CASES WITH GRANT UNDER \$100 (SEE TABLE 1C).

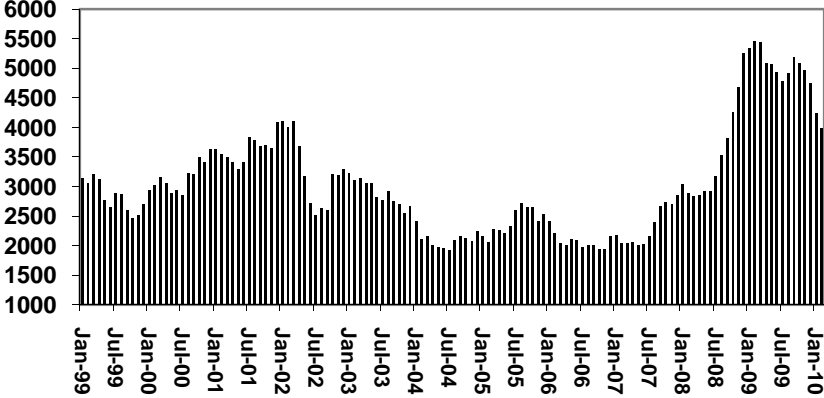
# CHART 1A

## CASH ASSISTANCE UNEMPLOYED PARENT PROGRAM COMPARISON OF CASES, RECIPIENTS, PAYMENTS & AVERAGE PAYMENTS FOR 1999, 2000, 2001, 2002, 2003, 2004, 2005, 2006, 2007, 2008, 2009, & 2010

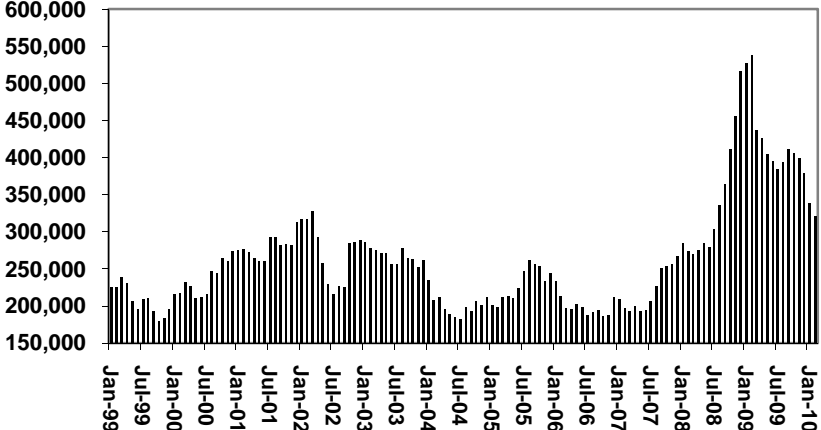
**Cases**



**Recipients**



**Payments**



**Average Payment Per Recipient**

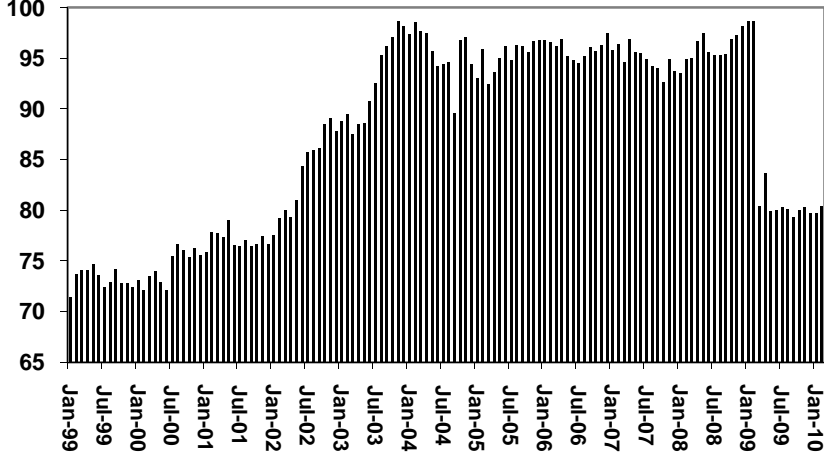




TABLE 1B 1/

CASH ASSISTANCE: ARIZONA  
CASES WITH GRANT UNDER \$100

	FEBRUARY 2010							CHANGE FROM			FEBRUARY 2009		
					AVERAGE	AVERAGE							
	FAMILIES (CASES)	PERSONS (RECIP.)	ADULTS	CHILDREN	TOTAL PAYMENTS	PAYMENT/ CASE	PAYMENT/ RECIP.	FAMILIES (CASES)	PERSONS (RECIP.)	TOTAL PAYMENTS	FAMILIES (CASES)	PERSONS (RECIP.)	TOTAL PAYMENTS
ARIZONA	859	1,711	447	1,264	61,208	71.25	35.77	(42)	(94)	(815)	116	182	6,812
DISTRICT I													
MARICOPA	559	1,145	282	863	38,830	69.46	33.91	(12)	(15)	212	130	258	10,330
DISTRICT II													
PIMA	142	277	81	196	10,737	75.61	38.76	(5)	(7)	(131)	5	18	(475)
DISTRICT III													
APACHE	0	0	0	0	0	0.00	0.00	0	0	0	(3)	(9)	(166)
COCONINO	4	9	3	6	378	94.50	42.00	0	0	62	(1)	(7)	(130)
NAVAJO	10	17	2	15	572	57.20	33.65	(5)	(17)	(408)	1	2	(270)
YAVAPAI	12	18	4	14	778	64.83	43.22	(10)	(26)	(882)	(14)	(28)	(1,143)
DISTRICT IV													
LA PAZ	6	8	3	5	504	84.00	63.00	2	0	224	2	(2)	144
MOHAVE	36	78	27	51	2,477	68.81	31.76	3	9	339	(5)	(8)	(755)
YUMA	16	40	12	28	1,180	73.75	29.50	(7)	(16)	(290)	(6)	(7)	(1,079)
DISTRICT V													
GILA	12	15	4	11	731	60.92	48.73	2	0	149	5	1	369
PINAL	35	61	17	44	2,897	82.77	47.49	(5)	(5)	93	5	(17)	388
DISTRICT VI													
COCHISE	19	29	7	22	1,502	79.05	51.79	(3)	(9)	(118)	0	(6)	(196)
GRAHAM	5	6	3	3	420	84.00	70.00	1	1	72	2	(1)	101
GREENLEE	0	0	0	0	0	0.00	0.00	0	0	0	(1)	(1)	(70)
SANTA CRUZ	3	8	2	6	202	67.33	25.25	(3)	(9)	(137)	(4)	(11)	(236)

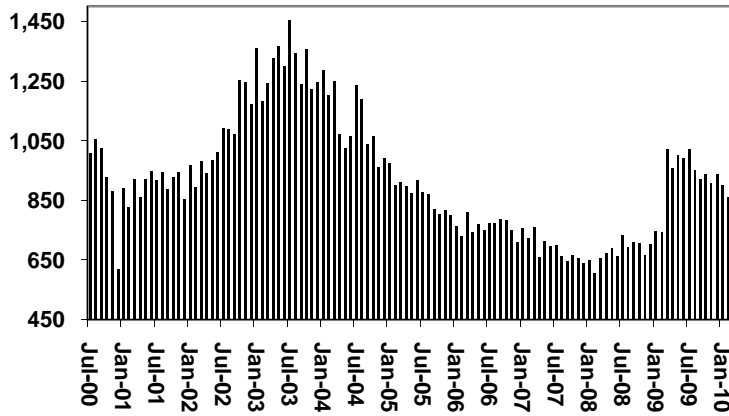
EXCLUDES: PRIOR MONTH NET TOTALS OF 491 CASES; 946 RECIPIENTS; \$31,510.

# CHART 1B

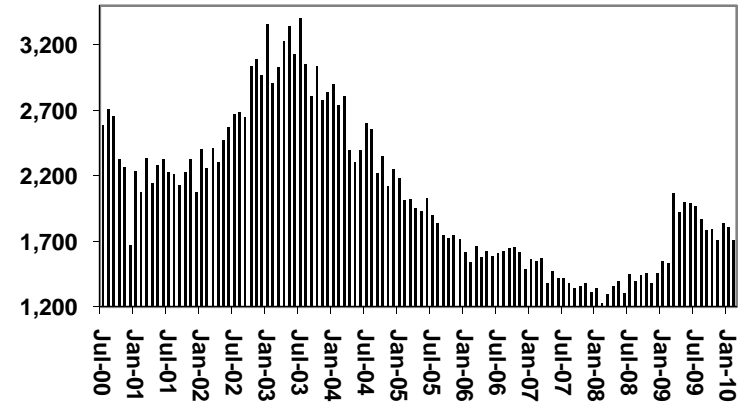
## CASH ASSISTANCE PROGRAM CASES WITH GRANT UNDER \$100

FOR 1999, 2000, 2001, 2002, 2003, 2004, 2005, 2006, 2007, 2008, 2009, & 2010

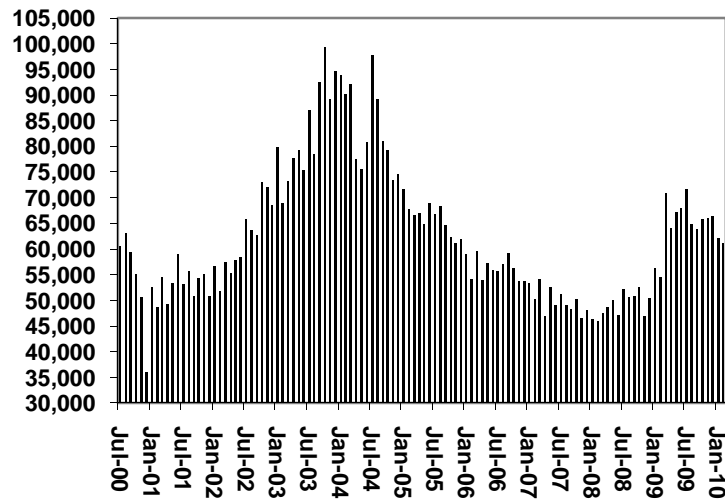
Cases



Recipients



Payments



Average Payment Per Recipient

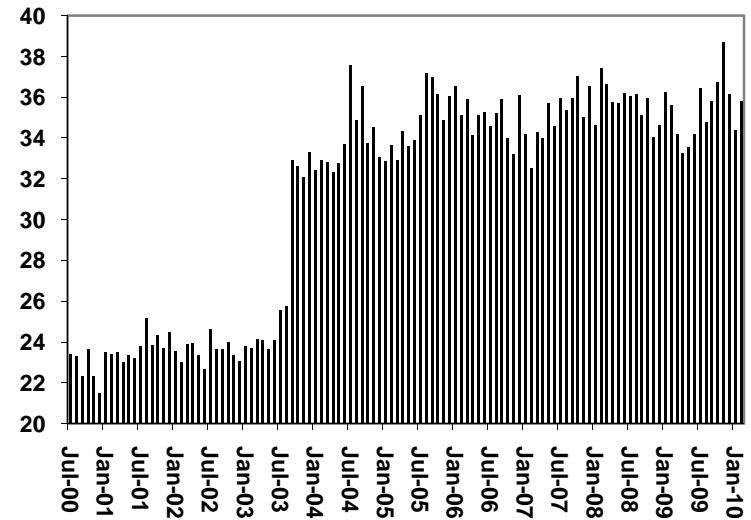


TABLE 1C 1/

CASH ASSISTANCE UNEMPLOYED PARENT PROGRAM: ARIZONA  
 CASES WITH GRANT UNDER \$100

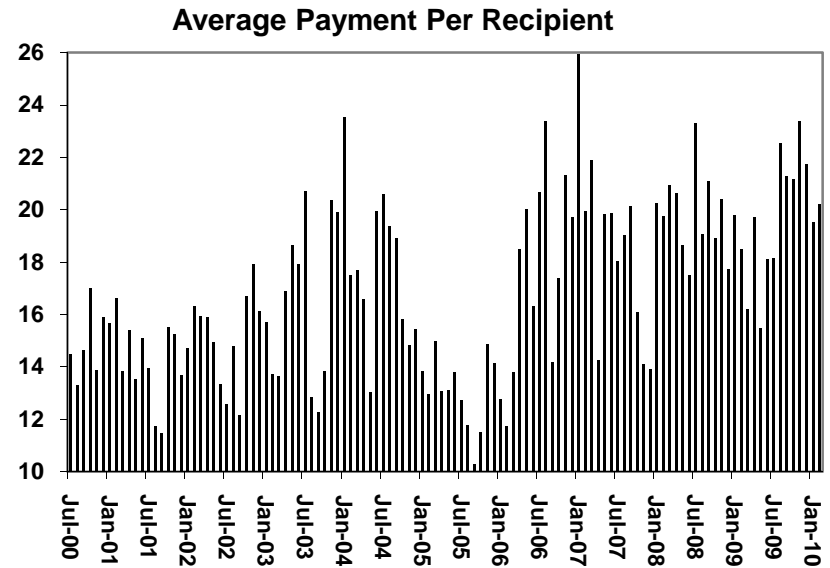
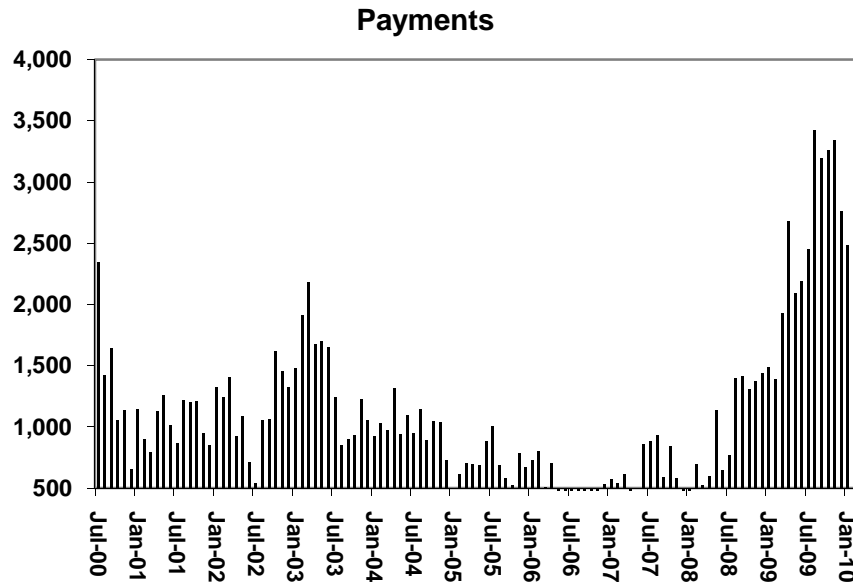
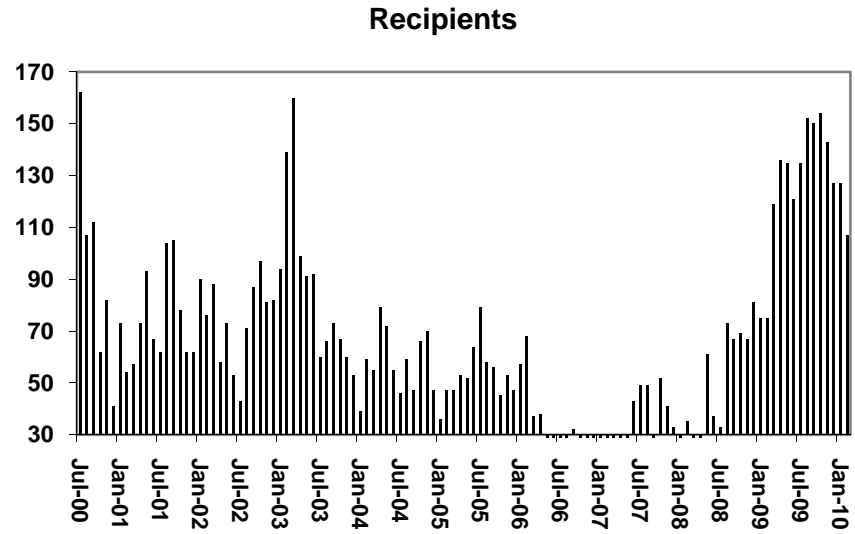
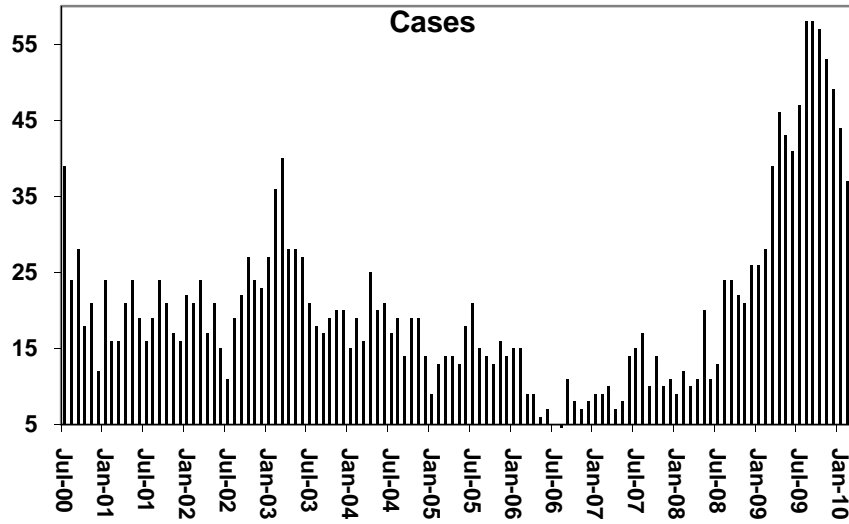
	FEBRUARY 2010								CHANGE FROM			FEBRUARY 2009		
					AVERAGE	AVERAGE			JANUARY 2010			FEBRUARY 2009		
	FAMILIES (CASES)	PERSONS (RECIP.)	ADULTS	CHILDREN	TOTAL PAYMENTS	PAYMENT/ CASE	PAYMENT/ RECIP.		FAMILIES (CASES)	PERSONS (RECIP.)	TOTAL PAYMENTS	FAMILIES (CASES)	PERSONS (RECIP.)	TOTAL PAYMENTS
ARIZONA	37	107	23	84	2,163	58.46	20.21	(7)	(20)	(317)	9	32	777	
DISTRICT I														
MARICOPA	33	96	19	77	1,895	57.42	19.74	(4)	(11)	(100)	15	52	1,096	
DISTRICT II														
PIMA	1	2	0	2	63	63.00	31.50	(1)	(5)	(36)	(2)	(8)	(136)	
DISTRICT III														
APACHE	0	0	0	0	0	0.00	0.00	0	0	0	0	0	0	
COCONINO	0	0	0	0	0	0.00	0.00	0	0	0	0	0	0	
NAVAJO	1	3	2	1	73	73.00	24.33	0	0	0	1	3	73	
YAVAPAI	1	2	0	2	90	90.00	45.00	(1)	(3)	(91)	1	2	90	
DISTRICT IV														
LA PAZ	0	0	0	0	0	0.00	0.00	0	0	0	0	0	0	
MOHAVE	0	0	0	0	0	0.00	0.00	0	0	0	(4)	(11)	(298)	
YUMA	0	0	0	0	0	0.00	0.00	0	0	0	0	0	0	
DISTRICT V														
GILA	1	4	2	2	42	42.00	10.50	(1)	(1)	(90)	(2)	(6)	(48)	
PINAL	0	0	0	0	0	0.00	0.00	0	0	0	0	0	0	
DISTRICT VI														
COCHISE	1	4	2	2	42	42.00	10.50	(1)	(1)	(90)	(2)	(6)	(48)	
GRAHAM	0	0	0	0	0	0.00	0.00	0	0	0	0	0	0	
GREENLEE	0	0	0	0	0	0.00	0.00	0	0	0	0	0	0	
SANTA CRUZ	0	0	0	0	0	0.00	0.00	0	0	0	0	0	0	

EXCLUDES: PRIOR MONTH NET TOTALS OF 35 CASES; 112 RECIPIENTS; \$1,869.

# CHART 1C

## CASH ASSISTANCE UNEMPLOYED PARENT PROGRAM CASES WITH GRANT UNDER \$100

FOR 1999, 2000, 2001, 2002, 2003, 2004, 2005, 2006, 2007, 2008, 2009, & 2010



**TABLE 4**

**TUBERCULOSIS CONTROL: ARIZONA 1/**

	CHANGE FROM										
	FEBRUARY 2010					JANUARY 2010			FEBRUARY 2009		
	NUMBER OF CASES	PERSONS (RECIP.)	TOTAL PAYMENTS	AVERAGE PAYMENT/ CASE	AVERAGE PAYMENT/ RECIP.	NUMBER OF CASES	PERSONS (RECIP.)	TOTAL PAYMENTS	NUMBER OF CASES	PERSONS (RECIP.)	TOTAL PAYMENTS
ARIZONA	1	1	173	173.00	173.00	0	0	0	(3)	(3)	(389)
DISTRICT I											
MARICOPA	1	1	173	173.00	173.00	0	0	0	(2)	(2)	(216)
DISTRICT II											
PIMA	0	0	0	0.00	0.00	0	0	0	0	0	0
DISTRICT III											
APACHE	0	0	0	0.00	0.00	0	0	0	0	0	0
COCONINO	0	0	0	0.00	0.00	0	0	0	0	0	0
NAVAJO	0	0	0	0.00	0.00	0	0	0	0	0	0
YAVAPAI	0	0	0	0.00	0.00	0	0	0	0	0	0
DISTRICT IV											
LA PAZ	0	0	0	0.00	0.00	0	0	0	0	0	0
MOHAVE	0	0	0	0.00	0.00	0	0	0	0	0	0
YUMA	0	0	0	0.00	0.00	0	0	0	(1)	(1)	(173)
DISTRICT V											
GILA	0	0	0	0.00	0.00	0	0	0	0	0	0
PINAL	0	0	0	0.00	0.00	0	0	0	0	0	0
DISTRICT VI											
COCHISE	0	0	0	0.00	0.00	0	0	0	0	0	0
GRAHAM	0	0	0	0.00	0.00	0	0	0	0	0	0
GREENLEE	0	0	0	0.00	0.00	0	0	0	0	0	0
SANTA CRUZ	0	0	0	0.00	0.00	0	0	0	0	0	0

1/EXCLUDES: PRIOR MONTH NET TOTALS OF : 0 CASES; 0 RECIPIENTS; \$0.

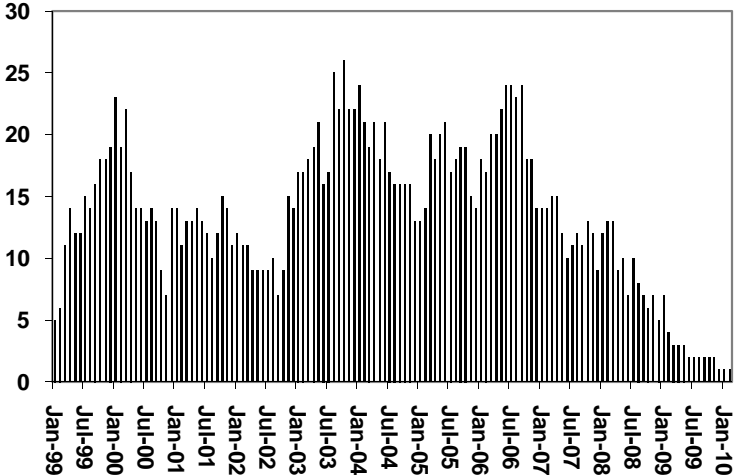
# CHART 4

## TUBERCULOSIS CONTROL PROGRAM

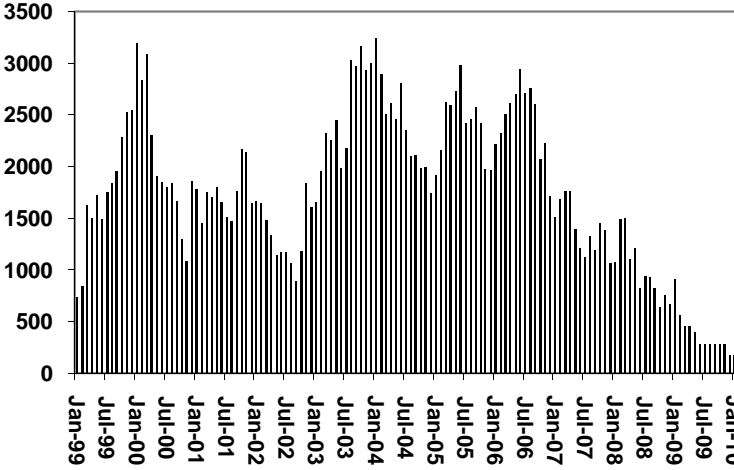
### COMPARISON OF CASES, PAYMENTS & AVERAGE PAYMENTS

FOR 1999, 2000, 2001, 2002, 2003, 2004, 2005, 2006, 2007, 2008, 2009, & 2010

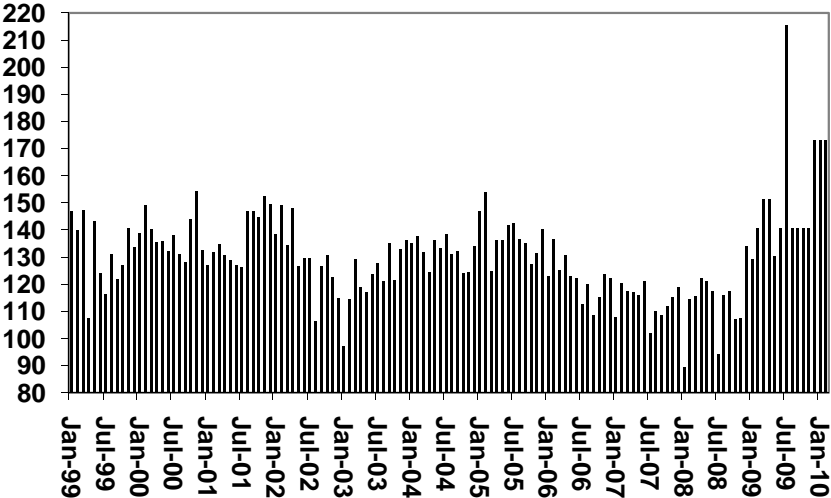
Cases



Payments



Average Payment Per Case



**TABLE 6**

**SUPPLEMENTAL NUTRITION ASSISTANCE PROGRAM: ARIZONA 1**

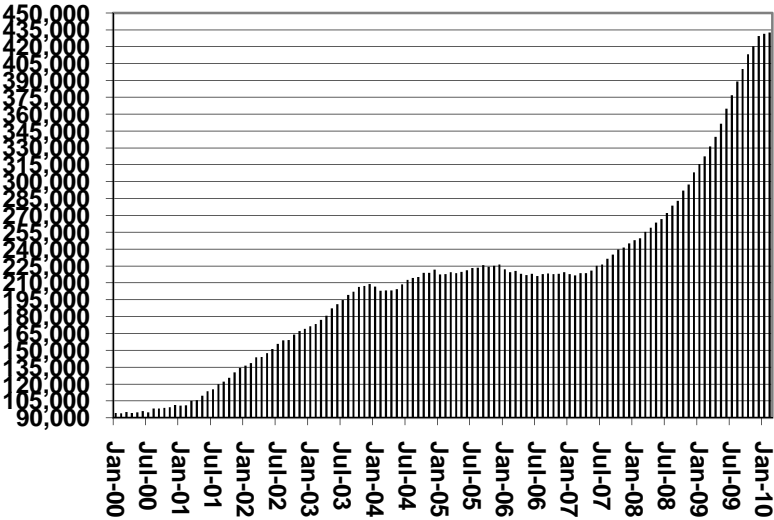
	CHANGE FROM												
	FEBRUARY 2010							JANUARY 2010			FEBRUARY 2009		
	HOUSEHOLDS	PERSONS	ADULTS	CHILDREN	TOTAL COUPON ISSUANCE	AVERAGE ALLOT./ HOUSEHOLD	AVERAGE ALLOT./ PERSON	HOUSEHOLDS	PERSONS	TOTAL COUPON ISSUANCE	HOUSEHOLDS	PERSONS	TOTAL COUPON ISSUANCE
ARIZONA	432,606	1,006,005	504,807	501,198	127,492,757	294.71	126.73	1,125	195	(2,616,514)	110,028	233,471	41,034,609
DISTRICT I													
MARICOPA	236,518	551,124	257,914	293,210	70,307,216	297.26	127.57	2,031	4,015	(1,646,112)	69,035	147,558	24,137,055
DISTRICT II													
PIMA	73,630	159,357	86,669	72,688	20,598,482	279.76	129.26	(88)	(251)	(366,052)	17,597	34,318	6,564,308
DISTRICT III													
APACHE	9,431	27,254	14,374	12,880	3,331,099	353.21	122.22	2,379	5,987	736,755	2,464	6,461	1,118,195
COCONINO	9,198	23,102	12,129	10,973	2,888,127	314.00	125.02	(121)	(2,471)	(240,184)	2,126	3,200	776,168
NAVAJO	12,268	32,959	17,657	15,302	4,076,929	332.32	123.70	(2,631)	(6,878)	(835,399)	800	1,333	719,212
YAVAPAI	13,662	27,959	16,439	11,520	3,500,815	256.24	125.21	100	118	(14,685)	3,691	7,274	1,216,475
DISTRICT IV													
LA PAZ	1,864	3,844	2,222	1,622	494,364	265.22	128.61	(5)	(37)	(7,945)	281	503	110,605
MOHAVE	19,050	40,890	24,183	16,707	5,163,776	271.06	126.28	673	3,734	352,747	4,043	9,882	1,643,147
YUMA	14,043	36,793	18,430	18,363	4,251,550	302.75	115.55	(230)	(823)	(144,546)	2,617	6,701	1,306,047
DISTRICT V													
GILA	5,514	12,180	7,083	5,097	1,583,723	287.22	130.03	(285)	(922)	(132,789)	1,126	2,252	458,891
PINAL	19,735	48,999	25,218	23,781	6,220,444	315.20	126.95	(862)	(2,512)	(338,307)	3,166	6,810	1,530,210
DISTRICT VI													
COCHISE	9,857	21,539	12,107	9,432	2,683,577	272.25	124.59	155	246	36,575	1,536	3,124	723,887
GRAHAM	3,240	7,783	4,273	3,510	958,185	295.74	123.11	222	494	65,106	726	1,839	311,221
GREENLEE	532	1,235	685	550	147,594	277.43	119.51	47	124	18,131	179	447	65,887
SANTA CRUZ	4,064	10,987	5,424	5,563	1,286,876	316.65	117.13	(260)	(629)	(99,809)	641	1,769	353,301

1/EXCLUDES: PRIOR MONTH NET TOTALS OF : 11,348 CASES; 27,537 RECIPIENTS; \$1,832,353.  
 AGED CANCELATIONS: 6,453 CASES; 9,673 RECIPIENTS; 322,386.  
 SNAP COUPON CONVERSIONS: 0 CASES; 0 RECIPIENTS; \$0.  
 SNAP REINSTATED: 0 CASES; \$0.  
 SNAP ZERO PAY: 13,399 CASES; 54,243 RECIPIENTS.  
 SNAP CHILD ONLY: 41,879 CASES; 97,699 RECIPIENTS; \$12,684,412.

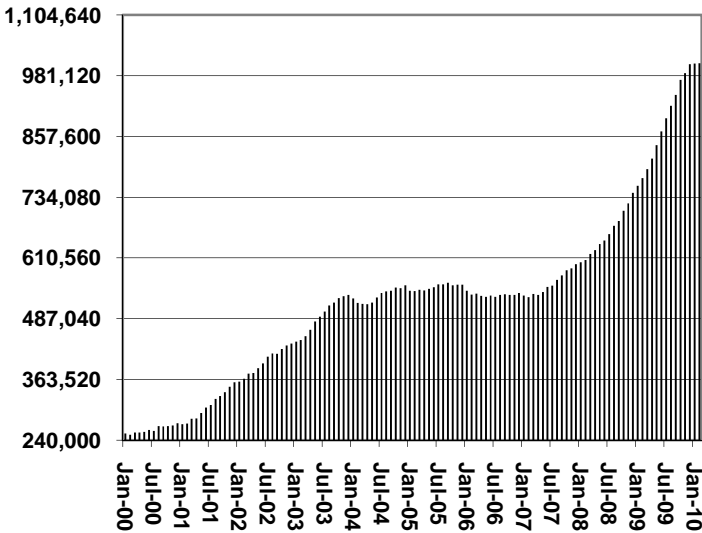
# CHART 6

## SUPPLEMENTAL NUTRITION ASSISTANCE PROGRAM (SNAP) COMPARISON OF HOUSEHOLDS, RECIPIENTS, PAYMENTS & AVERAGE PAYMENTS FOR 1999, 2000, 2001, 2002, 2003, 2004, 2005, 2006, 2007, 2008, 2009, & 2010

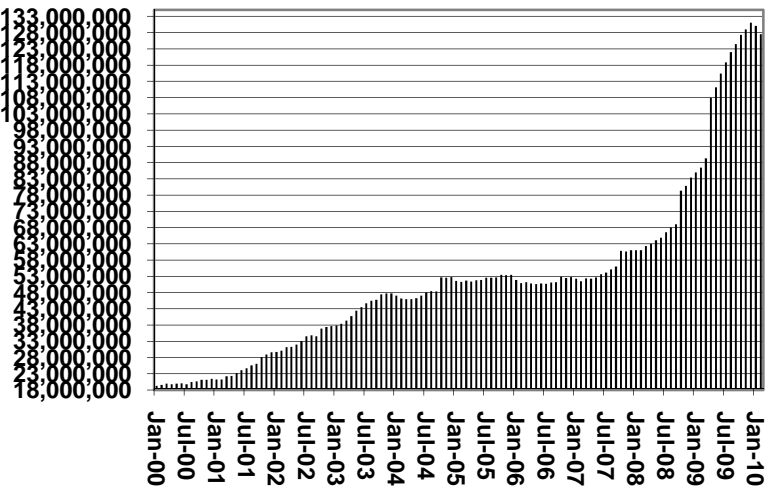
**Households**



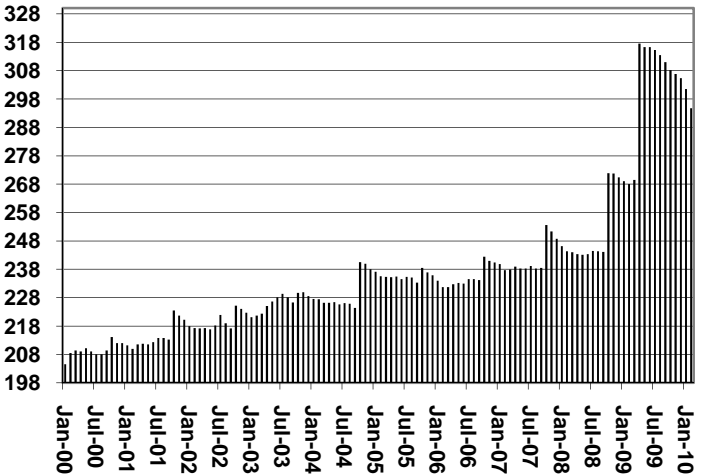
**Recipients**



**Payments**



**Average Payment Per Household**





**TABLE 7A**  
**MEDICAL ASSISTANCE PROGRAM**  
**RECIPIENTS**

**FEBRUARY 2010**

	SOBRA WOMAN 133% FPL	SOBRA CHILD	ADULT W/O CHILD 100% FPL	FOSTER CARE	1931 36% FPL	FEDERAL EMERGENCY SERVICES	INFANTS	ADULT W/O CHILD 40% FPL	MEDICAL W/SPEND DOWN	SOBRA WOMAN 100% FPL	SOBRA CHILD 100% FPL	TRANSITIONAL MEDICAL T1 - T4	1931 100% FPL	YATI	OTHER	TOTAL CASES
ARIZONA	10,047	65,143	59,079	11,854	327,807	73,909	50,014	156,508	6,283	3,862	225,982	44,226	118,497	341	26,496	1,180,048
DISTRICT I																
MARICOPA	5,350	36,597	28,353	6,164	183,587	57,869	29,929	78,892	3,356	2,043	132,126	21,964	60,513	211	13,583	660,537
DISTRICT II																
PIMA	1,557	9,932	11,005	3,249	48,247	8,128	6,920	27,658	846	539	32,592	6,613	19,406	74	4,454	181,220
DISTRICT III																
APACHE	193	1,401	1,018	45	10,839	122	1,009	5,271	109	92	4,735	817	3,042	1	375	29,069
COCONINO	288	1,372	1,625	132	8,237	464	1,127	4,572	102	121	5,080	991	3,088	10	390	27,599
NAVAJO	302	2,262	1,841	139	12,207	348	1,442	6,513	190	139	5,966	1,306	4,035	3	572	37,265
YAVAPAI	382	1,765	2,642	448	7,375	1,500	1,331	5,038	332	127	6,140	1,494	3,974	13	1,193	33,754
DISTRICT IV																
LA PAZ	31	216	261	18	1,211	157	141	776	25	20	717	196	431	0	155	4,355
MOHAVE	408	2,182	3,046	308	11,310	771	1,609	7,433	460	148	8,262	1,693	5,210	5	1,458	44,303
YUMA	510	2,447	2,671	298	10,653	1,611	1,952	4,381	269	224	9,516	4,376	5,918	4	1,231	46,061
DISTRICT V																
GILA	115	660	799	97	4,299	150	526	2,541	98	36	1,999	459	1,376	1	329	13,485
PINAL	519	3,994	2,686	603	17,072	1,564	2,173	7,825	267	190	9,815	2,217	5,662	13	1,312	55,912
DISTRICT VI																
COCHISE	188	1,195	1,705	245	6,700	588	903	3,134	123	84	4,169	954	2,757	4	830	23,579
GRAHAM	96	486	481	71	2,437	52	410	1,285	46	43	1,525	423	1,026	0	141	8,522
GREENLEE	9	53	77	8	407	7	64	173	12	5	295	53	184	1	30	1,378
SANTA CRUZ	99	581	869	29	3,226	578	478	1,016	48	51	3,045	670	1,875	1	443	13,009

**TABLE 7B**  
**MEDICAL ASSISTANCE PROGRAM**  
**RECIPIENTS**

**CHANGE FROM**  
**JANUARY 2010**

	SOBRA WOMAN 133% FPL	SOBRA CHILD	ADULT W/O CHILD 100% FPL	FOSTER CARE	1931 36% FPL	FEDERAL EMERGENCY SERVICES	INFANTS	ADULT W/O CHILD 40% FPL	MEDICAL W/SPEND DOWN	SOBRA WOMAN 100% FPL	SOBRA CHILD 100% FPL	TRANSITIONAL MEDICAL T1 - T4	1931 100% FPL	YATI	OTHER	TOTAL CASES
ARIZONA	(248)	(812)	446	69	(4,919)	(5,083)	(513)	510	(201)	99	902	1,305	1,355	10	134	(6,946)
DISTRICT I																
MARICOPA	(195)	(575)	287	73	(2,685)	(3,920)	(180)	580	(87)	119	512	872	831	5	127	(4,236)
DISTRICT II																
PIMA	(28)	(187)	120	4	(865)	(777)	(168)	(137)	(58)	(6)	192	24	212	0	(43)	(1,717)
DISTRICT III	9	(20)	46	(9)	(381)	(133)	(74)	(122)	(29)	(3)	67	(37)	129	3	44	(510)
APACHE	13	(11)	(15)	0	(70)	(2)	4	(7)	(17)	(11)	26	(2)	51	0	2	(39)
COCONINO	2	(36)	11	(4)	47	(6)	(29)	(55)	(7)	5	(45)	(50)	(26)	2	1	(190)
NAVAJO	(6)	3	60	4	(323)	(20)	(9)	(55)	4	2	71	22	61	0	25	(161)
YAVAPAI	0	24	(10)	(9)	(35)	(105)	(40)	(5)	(9)	1	15	(7)	43	1	16	(120)
DISTRICT IV	(17)	(51)	(40)	18	(706)	(160)	(7)	71	(4)	(14)	22	442	66	(1)	(29)	(410)
LA PAZ	(2)	(13)	(6)	1	(43)	3	(3)	(26)	(1)	3	25	(10)	22	0	(2)	(52)
MOHAVE	(1)	(1)	19	14	(109)	(52)	0	99	13	(21)	41	(43)	51	(1)	(17)	(8)
YUMA	(14)	(37)	(53)	3	(554)	(111)	(4)	(2)	(16)	4	(44)	495	(7)	0	(10)	(350)
DISTRICT V	3	39	4	0	(219)	(62)	(64)	50	(12)	1	50	108	76	3	12	(11)
GILA	(6)	2	2	0	(44)	(15)	(26)	21	(6)	0	(5)	4	33	1	0	(39)
PINAL	9	37	2	0	(175)	(47)	(38)	29	(6)	1	55	104	43	2	12	28
DISTRICT VI	(20)	(18)	29	(17)	(63)	(31)	(20)	68	(11)	2	59	(104)	41	0	23	(62)
COCHISE	(14)	(5)	48	(10)	(22)	(11)	(16)	48	10	1	37	(94)	24	(1)	13	8
GRAHAM	(3)	(5)	(6)	(7)	(32)	0	(2)	23	(8)	4	26	(46)	25	0	(1)	(32)
GREENLEE	(2)	(1)	2	0	25	0	(2)	3	1	(5)	7	(2)	8	1	3	38
SANTA CRUZ	(1)	(7)	(15)	0	(34)	(20)	0	(6)	(14)	2	(11)	38	(16)	0	8	(76)

**TABLE 7C**  
**MEDICAL ASSISTANCE PROGRAM**  
**RECIPIENTS**

**CHANGE FROM**  
**FEBRUARY 2009**

	SOBRA WOMAN 133% FPL	SOBRA CHILD	ADULT W/O CHILD 100% FPL	FOSTER CARE	1931 36% FPL	FEDERAL EMERGENCY SERVICES	INFANTS	ADULT W/O CHILD 40% FPL	MEDICAL W/SPEND DOWN	SOBRA WOMAN 100% FPL	SOBRA CHILD 100% FPL	TRANSITIONAL MEDICAL T1 - T4	3E 1931 100% FPL	YATI	OTHER	TOTAL CASES
ARIZONA	(1,344)	275	15,644	834	23,053	(13,015)	1,649	45,812	610	182	41,484	802	27,535	49	339	143,909
DISTRICT I																
MARICOPA	(521)	98	9,145	548	16,921	(9,643)	1,261	27,076	436	168	26,852	1,392	16,642	59	544	90,978
DISTRICT II																
PIMA	(247)	30	2,705	143	2,671	(2,481)	132	7,640	1	(30)	4,784	(748)	3,711	(11)	(213)	18,087
DISTRICT III																
APACHE	(20)	40	(11)	4	(56)	19	43	1,135	0	6	864	(112)	649	(2)	(17)	2,542
COCONINO	(65)	(76)	367	(2)	426	(95)	(18)	1,254	(43)	9	976	(84)	681	4	(14)	3,320
NAVAJO	(93)	(62)	320	5	310	(22)	61	1,366	(13)	(19)	879	(63)	691	(2)	(36)	3,322
YAVAPAI	(57)	(125)	632	14	615	(89)	83	1,403	52	5	1,279	282	850	(1)	85	5,028
DISTRICT IV																
LA PAZ	(5)	(18)	35	10	(44)	(13)	(30)	118	(16)	9	78	45	77	0	(10)	236
MOHAVE	(41)	43	760	42	348	(124)	48	1,453	30	(13)	1,098	(181)	839	2	64	4,368
YUMA	(68)	49	432	34	751	(182)	14	1,052	53	39	1,626	(79)	1,060	2	(120)	4,663
DISTRICT V																
GILA	(36)	1	211	17	56	(13)	31	347	13	(6)	160	83	236	1	(10)	1,091
PINAL	(58)	271	629	35	713	(222)	(39)	1,826	78	8	1,587	269	1,175	(3)	57	6,326
DISTRICT VI																
COCHISE	(60)	3	275	(13)	149	(111)	32	581	1	9	501	(124)	315	(2)	26	1,582
GRAHAM	(40)	10	54	(5)	13	(3)	12	267	18	7	372	18	242	0	(10)	955
GREENLEE	(16)	(4)	24	2	108	(3)	(1)	37	10	(2)	137	35	99	1	10	437
SANTA CRUZ	(17)	15	66	0	72	(33)	20	257	(10)	(8)	291	69	268	1	(17)	974

# CHART 7

## MEDICAL ASSISTANCE PROGRAM

### COMPARISON OF RECIPIENTS

FOR 1999, 2000, 2001, 2002, 2003, 2004, 2005, 2006, 2007, 2008, 2009, & 2010

Total Recipients

