



---

DEPARTMENT OF ECONOMIC SECURITY

---

*Your Partner For A Stronger Arizona*

State of Arizona

Department of Economic Security

Family Assistance Administration

Statistical Bulletin

March, 2010

Phone: (602) 542-3678

<https://www.azdes.gov/appreports.aspx>

\*\*\*\* STATISTICAL BULLETIN \*\*\*\*  
ARIZONA DEPARTMENT OF ECONOMIC SECURITY  
FAMILY ASSISTANCE ADMINISTRATION  
BOX 6123, PHOENIX, ARIZONA 85005  
PHONE (602) 542-3678

MARCH 2010

THIS ISSUE OF THE STATISTICAL BULLETIN COMPARES MARCH 2010 DATA FOR EACH OF THE INDICATED PROGRAMS WITH THE INFORMATION FOR FEBRUARY 2010 AND MARCH 2009. STATEWIDE SUMMARIES OF ACTIVITY WITHIN EACH OF THE SPECIFIC PROGRAMS FOR THIS REPORT PERIOD ARE DISCUSSED BELOW. THE TABLES COMPARE CURRENT AND PRIOR MONTH DATA. DISTRICT AND COUNTY COMPARISONS ARE PROVIDED WITHIN THIS BULLETIN

TANF SUMMARY

COMPARING TO FEBRUARY 2010, MARCH 2010 CASES DECREASED BY 831 (2.23%) TO 36,499. RECIPIENTS DECREASED BY 2,078 (2.57%) TO 78,832. PAYMENTS DECREASED BY \$195,706 (2.47%) TO \$7,730,943. AVERAGE PAYMENT PER CASE DECREASED BY \$0.53 (0.25%) TO \$211.81. PAYMENT PER RECIPIENT INCREASED BY \$0.10 (0.10%) TO \$98.07.

COMPARING TO MARCH 2009, MARCH 2010 CASES DECREASED BY 2,736 (6.97%). RECIPIENTS DECREASED BY 7,288 (8.46%). TOTAL PAYMENTS DECREASED BY \$760,097 (8.95%). THE AVERAGE PAYMENT PER CASE DECREASED BY \$4.60 (2.13%). THE AVERAGE PAYMENT PER RECIPIENT DECREASED BY \$0.53 (0.54%).

CASH ASSISTANCE (CA)

COMPARING TO FEBRUARY 2010, MARCH 2010 CASES DECREASED BY 774 (2.19%) TO 34,514. RECIPIENTS DECREASED BY 1,761 (2.34%) TO 73,343. PAYMENTS DECREASED BY \$160,094 (2.12%) TO \$7,382,418. AVERAGE PAYMENT PER CASE INCREASED BY \$0.16 (0.07%) TO \$213.90. PAYMENT PER RECIPIENT INCREASED BY \$0.23 (0.23%) TO \$100.66.

COMPARING TO MARCH 2009, MARCH 2010 CASES DECREASED BY 2,136 (5.83%). RECIPIENTS DECREASED BY 5,160 (6.57%). TOTAL PAYMENTS DECREASED BY \$599,441 (7.51%). THE AVERAGE PAYMENT PER CASE DECREASED BY \$3.89 (1.79%). THE AVERAGE PAYMENT PER RECIPIENT DECREASED BY \$1.02 (1.00%).

CASH ASSISTANCE UNEMPLOYED PARENT PROGRAM (CA-UP)

COMPARING TO FEBRUARY 2010, MARCH 2010 CASES DECREASED BY 124 (10.82%) TO 1,022. RECIPIENTS DECREASED BY 410 (10.28%) TO 3,578. PAYMENTS DECREASED BY \$37,532 (11.70%) TO \$283,234. AVERAGE PAYMENT PER CASE DECREASED BY \$2.76 (0.99%) TO \$277.14. PAYMENT PER RECIPIENT DECREASED BY \$1.27 (1.58%) TO \$79.16.

COMPARING TO MARCH 2009, MARCH 2010 CASES DECREASED BY 504 (33.03%). RECIPIENTS DECREASED BY 1,850 (34.08%). TOTAL PAYMENTS DECREASED BY \$153,253 (35.11%). THE AVERAGE PAYMENT PER CASE DECREASED BY \$8.90 (3.11%). THE AVERAGE PAYMENT PER RECIPIENT DECREASED BY \$1.25 (1.56%).

CASH ASSISTANCE WITH GRANT UNDER \$100 (CA-MOE)

COMPARING TO FEBRUARY 2010, MARCH 2010 CASES INCREASED BY 75 (8.73%) TO 934. RECIPIENTS INCREASED BY 122 (7.13%) TO 1,833. PAYMENTS INCREASED BY \$2,495 (4.08%) TO \$63,703. AVERAGE PAYMENT PER CASE DECREASED BY \$3.05 (4.28%) TO \$68.20. AVERAGE PAYMENT PER RECIPIENT DECREASED BY \$1.02 (2.85%) TO \$34.75.

COMPARING TO MARCH 2009, MARCH 2010 CASES DECREASED BY 86 (8.43%). RECIPIENTS DECREASED BY 237 (11.45%). TOTAL PAYMENTS DECREASED BY \$7,064 (9.98%). THE AVERAGE PAYMENT PER CASE DECREASED BY \$1.18 (1.70%). THE AVERAGE PAYMENT PER RECIPIENT INCREASED BY \$0.56 (1.64%).

CASH ASSISTANCE UNEMPLOYED PARENT PROGRAM WITH GRANT UNDER \$100 (CA-UP-MOE) NEW PROGRAM STARTING 7/01

COMPARING TO FEBRUARY 2010, MARCH 2010 CASES DECREASED BY 8 (21.62%) TO 29. RECIPIENTS DECREASED BY 29 (27.10%) TO 78. PAYMENTS DECREASED BY \$575 (26.58%) TO \$1,588. AVERAGE PAYMENT PER CASE DECREASED BY \$3.70 (6.33%) TO \$54.76. PAYMENT PER RECIPIENT INCREASED BY \$0.15 (0.74%) TO \$20.36.

COMPARING TO MARCH 2009, MARCH 2010 CASES DECREASED BY 10 (25.64%). RECIPIENTS DECREASED BY 41 (1.90%). TOTAL PAYMENTS DECREASED BY \$339 (17.59%). THE AVERAGE PAYMENT PER CASE INCREASED BY \$5.35 (10.83%). THE AVERAGE PAYMENT PER RECIPIENT INCREASED BY \$4.17 (25.76%).

TUBERCULOSIS CONTROL PROGRAM (TC)

COMPARING TO FEBRUARY 2010, MARCH 2010 CASES INCREASED BY 0 (0.00%) TO 1. RECIPIENTS INCREASED BY 0 (0.00%) TO 1. PAYMENTS INCREASED BY \$0 (0.00%) TO \$173. AVERAGE PAYMENT PER CASE INCREASED BY \$38.81 (22.43%) TO \$211.81. AVERAGE PAYMENT PER RECIPIENT INCREASED BY \$0.00 (0.00%) TO \$173.00.

COMPARING TO MARCH 2009, MARCH 2010 CASES DECREASED BY 2 (66.67%). RECIPIENTS DECREASED BY 2 (66.67%). TOTAL PAYMENTS DECREASED BY \$281 (61.89%). THE AVERAGE PAYMENT PER CASE INCREASED BY \$60.48 (39.96%). THE AVERAGE PAYMENT PER RECIPIENT INCREASED BY \$21.67 (14.32%).

SUPPLEMENTAL NUTRITION ASSISTANCE PROGRAM (SNAP)

COMPARING TO FEBRUARY 2010, MARCH 2010 SUPPLEMENTAL NUTRITION ASSISTANCE HOUSEHOLDS INCREASED BY 6,722 (1.55%) TO 439,328. PERSONS RECEIVING SUPPLEMENTAL NUTRITION ASSISTANCE INCREASED BY 11,095 (1.10%) TO 1,017,100. TOTAL COUPON ISSUANCE INCREASED BY \$1,320,926 (1.04%) TO \$128,813,683. THE AVERAGE HOUSEHOLD ALLOTMENT DECREASED BY \$1.50 (0.51%) TO \$293.21. THE AVERAGE ALLOTMENT PER PERSON DECREASED BY \$0.08 (0.06%) TO \$126.65.

COMPARING TO MARCH 2009, MARCH 2010 SUPPLEMENTAL NUTRITION ASSISTANCE HOUSEHOLDS INCREASED BY 107,935 (32.57%). PERSONS RECEIVING SUPPLEMENTAL NUTRITION ASSISTANCE INCREASED BY 225,856 (28.54%). TOTAL COUPON ISSUANCE INCREASED BY \$39,503,270 (44.23%). THE AVERAGE ALLOTMENT PER HOUSEHOLD INCREASED BY \$23.71 (8.80%). THE AVERAGE ALLOTMENT PER PERSON INCREASED BY \$13.78 (12.21%).

MEDICAL ASSISTANCE PROGRAM (MA) NEW TABLE INCLUDES PROP. 204 CATEGORIES

COMPARING TO FEBRUARY 2010, MARCH 2010 TOTAL RECIPIENTS TOTAL RECIPIENTS INCREASED BY 8,623 (0.73%). SOBRA WOMEN AT 140% FPL INCREASED BY 210 (2.09%). SOBRA CHILDREN INCREASED BY 367 (0.56%). ADULTS W/O CHILD AT 100% INCREASED BY 1,324 (2.24%). FOSTER CARE INCREASED BY 69 (0.58%). 1931 AT 36% FPL INCREASED BY 1,342 (0.41%). EMERGENCY SERVICES DECREASED BY 3,576 (4.84%). INFANTS INCREASED BY 94 (0.19%). ADULT W/O CHILD AT 140% INCREASED BY 2,330 (1.49%). MEDICAL W/SPEND DOWN INCREASED BY 569 (9.06%). SOBRA WOMAN AT 100% INCREASED BY 128 (3.31%). SOBRA CHILD AT 100% INCREASED BY 2,570 (1.14%). TRANSITIONAL MEDICAL INCREASED BY 570 (1.29%). 1931 AT 100% INCREASED BY 2,223 (1.88%). YATI DECREASED BY 4 (1.17%). ALL OTHER CATEGORIES INCREASED BY 407 (1.54%).

COMPARING TO MARCH 2009, MARCH 2010 TOTAL RECIPIENTS TOTAL RECIPIENTS INCREASED BY 142,079 (13.58%). SOBRA WOMEN AT 140% FPL DECREASED BY 1,210 (10.55%). SOBRA CHILDREN INCREASED BY 855 (1.32%). ADULTS W/O CHILD AT 100% INCREASED BY 16,403 (37.28%). FOSTER CARE INCREASED BY 781 (7.01%). 1931 AT 36% FPL INCREASED BY 19,240 (6.21%). EMERGENCY SERVICES DECREASED BY 17,416 (19.85%). INFANTS INCREASED BY 2,029 (4.22%). ADULT W/O CHILD AT 140% INCREASED BY 46,469 (41.35%). MEDICAL W/SPEND DOWN INCREASED BY 1,182 (20.85%). SOBRA WOMAN AT 100% INCREASED BY 320 (8.72%). SOBRA CHILD AT 100% INCREASED BY 42,239 (22.67%). TRANSITIONAL MEDICAL INCREASED BY 2,391 (5.64%). 1931 AT 100% INCREASED BY 27,879 (30.03%). YATI INCREASED BY 53 (18.66%). ALL OTHER CATEGORIES INCREASED BY 864 (3.32%).

**TANF SUMMARY**

**TABLES 1, 1A, 1B, & 1C: ARIZONA 1/**

	MARCH 2010								CHANGE FROM			FEBRUARY 2010			MARCH 2009		
	FAMILIES (CASES)	PERSONS (RECIP.)	ADULTS	CHILDREN	TOTAL PAYMENTS	AVERAGE PAYMENT/ CASE	AVERAGE PAYMENT/ RECIP.		FAMILIES (CASES)	PERSONS (RECIP.)	TOTAL PAYMENTS	FAMILIES (CASES)	PERSONS (RECIP.)	TOTAL PAYMENTS			
	ARIZONA	36,499	78,832	19,232	59,600	7,730,943	211.81	98.07		(831)	(2,078)	(195,706)	(2,736)	(7,288)	(760,097)		
DISTRICT I																	
MARICOPA	22,598	49,730	11,689	38,041	4,756,306	210.47	95.64		(395)	(950)	(86,636)	(576)	(1,947)	(247,323)			
DISTRICT II																	
PIMA	5,846	11,806	2,996	8,810	1,204,237	205.99	102.00		(196)	(460)	(45,803)	(874)	(2,171)	(219,967)			
DISTRICT III																	
APACHE	104	237	63	174	25,046	240.83	105.68		101	223	24,135	40	110	12,366			
COCONINO	181	374	76	298	36,247	200.26	96.92		(28)	(71)	(6,479)	(74)	(164)	(15,929)			
NAVAJO	1,376	3,608	1,129	2,479	379,649	275.91	105.22		(102)	(248)	(26,868)	4	139	14,110			
YAVAPAI	625	1,192	245	947	121,010	193.62	101.52		(6)	(17)	(2,662)	(142)	(332)	(31,456)			
DISTRICT IV																	
LA PAZ	167	339	101	238	31,783	190.32	93.76		(1)	(3)	(1,243)	(21)	(65)	(7,900)			
MOHAVE	1,136	2,316	627	1,689	231,382	203.68	99.91		(1)	8	(1,385)	(217)	(565)	(52,737)			
YUMA	856	1,818	352	1,466	178,076	208.03	97.95		(22)	(75)	(6,326)	(147)	(336)	(32,443)			
DISTRICT V																	
GILA	709	1,496	537	959	170,913	241.06	114.25		(19)	(36)	(3,092)	(5)	(39)	(4,005)			
PINAL	1,676	3,580	891	2,689	341,673	203.86	95.44		(113)	(327)	(28,844)	(316)	(896)	(80,218)			
DISTRICT VI																	
COCHISE	729	1,388	293	1,095	149,080	204.50	107.41		(39)	(106)	(7,894)	(226)	(541)	(51,228)			
GRAHAM	260	485	147	338	58,213	223.90	120.03		2	11	611	(114)	(279)	(25,961)			
GREENLEE	24	49	12	37	4,967	206.96	101.37		2	3	258	(11)	(31)	(3,092)			
SANTA CRUZ	212	414	74	340	42,361	199.82	102.32		(14)	(30)	(3,478)	(57)	(171)	(14,314)			

1/EXCLUDES: PRIOR MONTH NET TOTALS OF 1,236 CASES; 2,940 RECIPIENTS; \$237,248.  
 GRANT DIVERSION TOTALS OF: 875 CASES;\$655,275.  
 ZERO PAY TOTALS OF 1,944 CASES; 5,838 RECIPIENTS.  
 TANF CHILD ONLY: 18,259 CASES; 30,495 RECIPIENTS; \$3,506,386.  
 RRP: 673 CASES; 1,226 RECIPIENTS; \$147,323.

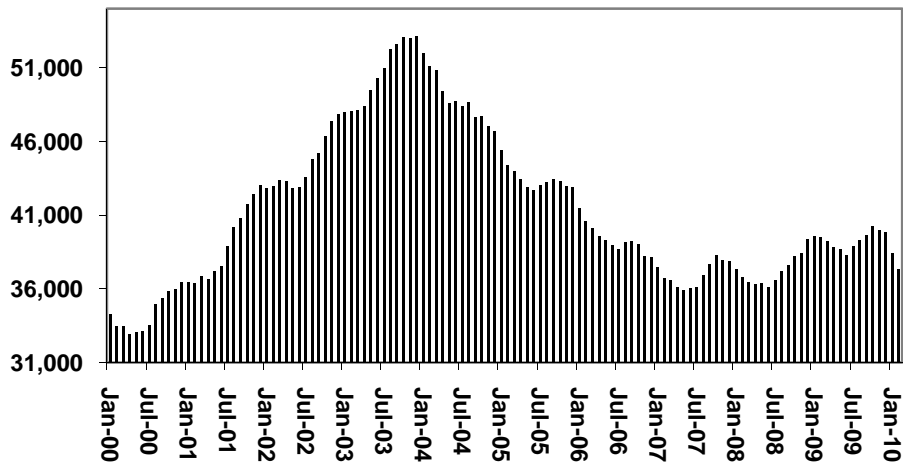
	CURRENT MO. CASES	CURRENT MO. RECIP.	CURRENT MO. DOLLARS	PRIOR MO. CASES	PRIOR MO. RECIP	PRIOR MO. DOLLARS
PASQUAYUQUI	326	930	\$96,440	14	45	\$6,678
WM APACHE	787	2,304	\$250,254	7	18	\$990
SALT RIVER	86	277	\$25,541	6	18	\$988
SAN CARLOS	594	1,311	\$154,842	20	38	\$3,189
HOPI	139	402	\$31,436	7	25	\$1,553
<b>TOTAL</b>	<b>1,932</b>	<b>5,224</b>	<b>\$558,513</b>	<b>54</b>	<b>144</b>	<b>\$13,398</b>

# TANF SUMMARY

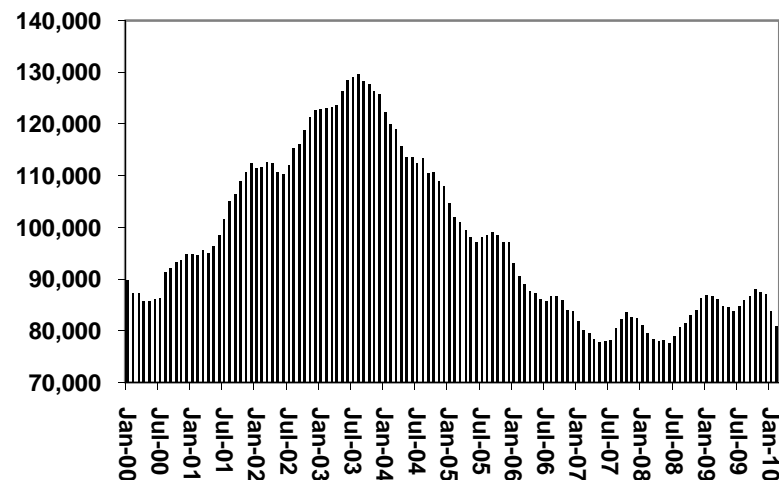
TABLES 1, 1A, 1B, & 1C

COMPARISON OF CASES, RECIPIENTS, PAYMENTS & AVERAGE PAYMENTS  
FOR 2000, 2001, 2002, 2003, 2004, 2005, 2006, 2007, 2008, 2009, & 2010

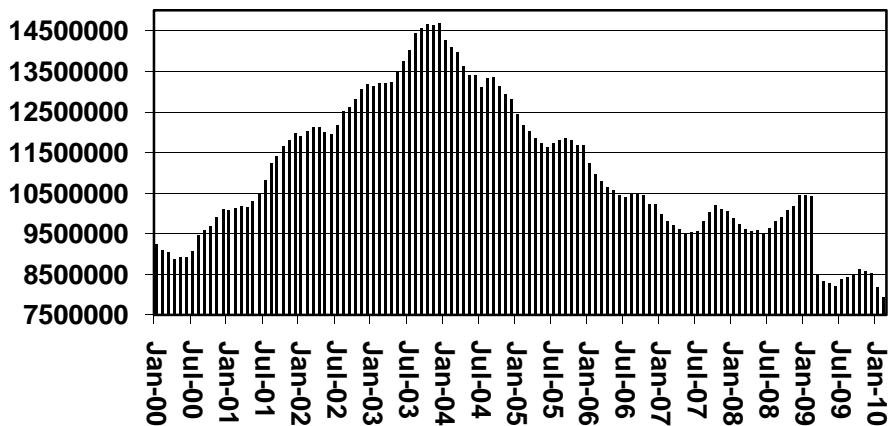
### Cases



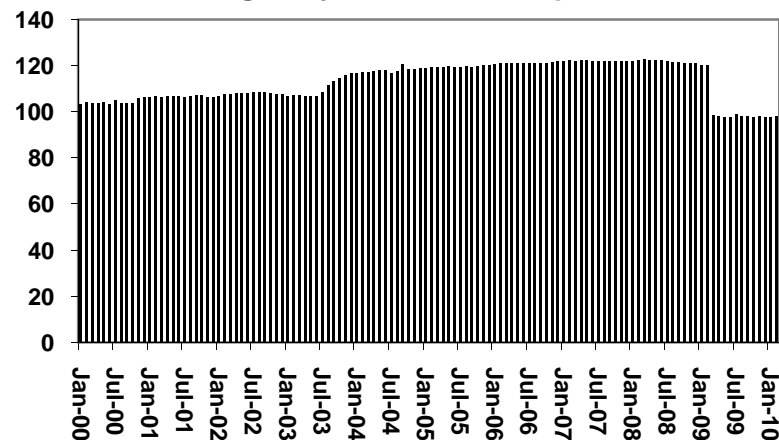
### Recipients



### Payments



### Average Payments Per Recipient



**TABLE 1**  
**CASH ASSISTANCE: ARIZONA 1/**

	CHANGE FROM												
	MARCH 2010							FEBRUARY 2010			MARCH 2009		
	FAMILIES (CASES)	(RECIP.)	ADULTS	CHILDREN	TOTAL PAYMENTS	AVERAGE PAYMENT/ CASE	AVERAGE PAYMENT/ RECIP.	FAMILIES (CASES)	PERSONS (RECIP.)	TOTAL PAYMENTS	FAMILIES (CASES)	PERSONS (RECIP.)	TOTAL PAYMENTS
ARIZONA	34,514	73,343	17,385	55,958	7,382,418	213.90	100.66	(774)	(1,761)	(160,094)	(2,136)	(5,160)	(599,441)
DISTRICT I													
MARICOPA	21,242	45,933	10,524	35,409	4,513,964	212.50	98.27	(353)	(789)	(66,636)	(346)	(1,162)	(182,510)
DISTRICT II													
PIMA	5,532	10,931	2,628	8,303	1,146,757	207.30	104.91	(185)	(370)	(37,450)	(755)	(1,696)	(184,742)
DISTRICT III													
APACHE	103	234	61	173	24,768	240.47	105.85	102	231	24,490	46	126	12,974
COCONINO	178	366	73	293	35,970	202.08	98.28	(26)	(66)	(6,043)	(65)	(131)	(13,604)
NAVAJO	1,349	3,525	1,097	2,428	374,698	277.76	106.30	(100)	(244)	(25,441)	46	287	27,944
YAVAPAI	596	1,128	228	900	117,935	197.88	104.55	(14)	(34)	(2,882)	(106)	(240)	(25,663)
DISTRICT IV													
LA PAZ	153	315	90	225	30,741	200.92	97.59	(7)	(13)	(1,465)	(27)	(64)	(7,200)
MOHAVE	1,075	2,148	559	1,589	221,966	206.48	103.34	(4)	6	(1,506)	(187)	(470)	(45,773)
YUMA	825	1,731	319	1,412	172,554	209.16	99.68	(18)	(46)	(5,028)	(133)	(305)	(29,759)
DISTRICT V													
GILA	692	1,461	524	937	168,939	244.13	115.63	(18)	(38)	(3,116)	(4)	(28)	(3,351)
PINAL	1,582	3,310	783	2,527	324,350	205.03	97.99	(111)	(306)	(26,659)	(246)	(605)	(62,060)
DISTRICT VI													
COCHISE	702	1,340	277	1,063	145,967	207.93	108.93	(35)	(90)	(6,807)	(197)	(455)	(46,105)
GRAHAM	255	476	142	334	57,381	225.02	120.55	5	17	930	(103)	(241)	(23,678)
GREENLEE	23	45	10	35	4,632	201.39	102.93	3	6	536	(10)	(27)	(2,757)
SANTA CRUZ	207	400	70	330	41,796	201.91	104.49	(13)	(25)	(3,017)	(49)	(149)	(13,157)

1/EXCLUDES: PRIOR MONTH NET TOTALS OF: 545 CASES; 1,342 RECIPIENTS; \$171,957.  
GRANT DIVERSION TOTALS OF: 875 CASES; \$655,275  
ZERO PAY TOTALS OF 1,878 CASES; 5,547 RECIPIENTS.

	CURRENT MO. CASES	CURRENT MO. RECIP.	CURRENT MO. DOLLARS	PRIOR MO. CASES	PRIOR MO. RECIP.	PRIOR MO. DOLLARS
PASQUA/YAQUI	309	857	\$89,906	12	41	\$6,439
WM APACHE	782	2,282	\$248,705	7	18	\$990
SALT RIVER	86	277	\$25,541	6	18	\$988
SAN CARLOS	594	1,311	\$154,842	20	38	\$3,189
HOPI	139	402	\$31,436	7	25	\$1,553
<b>TOTAL</b>	<b>1,910</b>	<b>5,129</b>	<b>\$550,430</b>	<b>52</b>	<b>140</b>	<b>\$13,159</b>

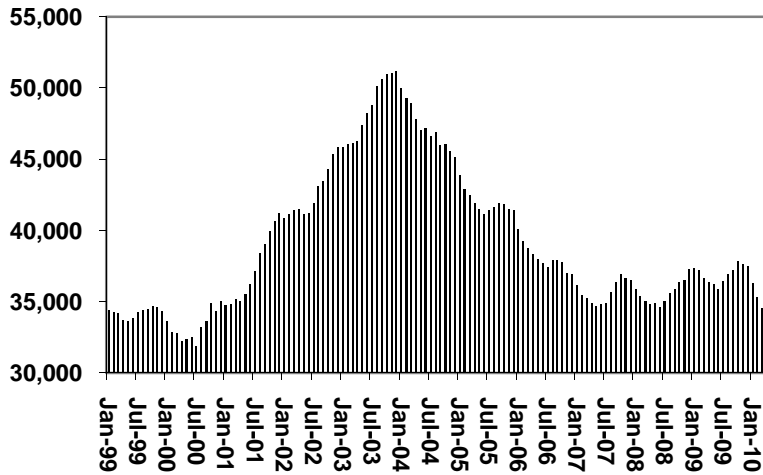
CASES WITH GRANT UNDER \$100 (SEE TABLE 1B).

# CHART 1

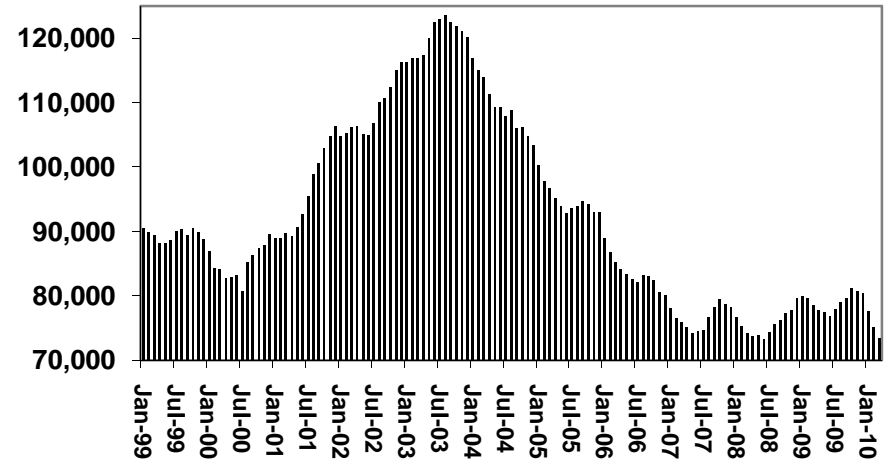
## CASH ASSISTANCE PROGRAM

### COMPARISON OF CASES, RECIPIENTS, PAYMENTS & AVERAGE PAYMENTS FOR 1999, 2000, 2001, 2002, 2003, 2004, 2005, 2006, 2007, 2008, 2009, & 2010

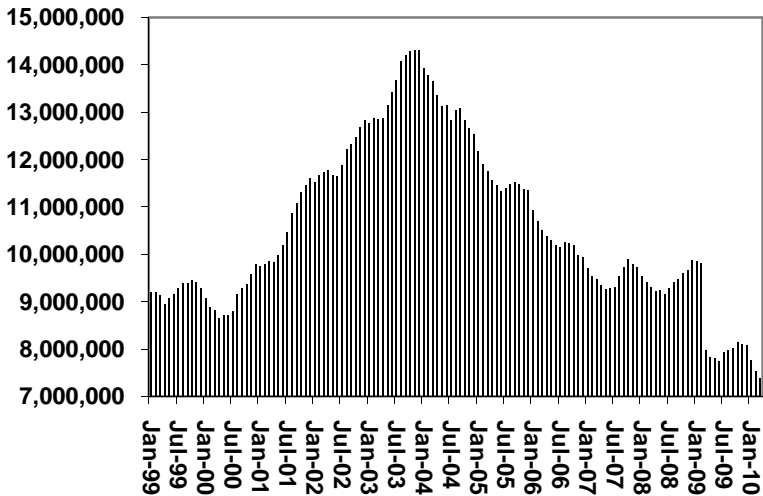
**Cases**



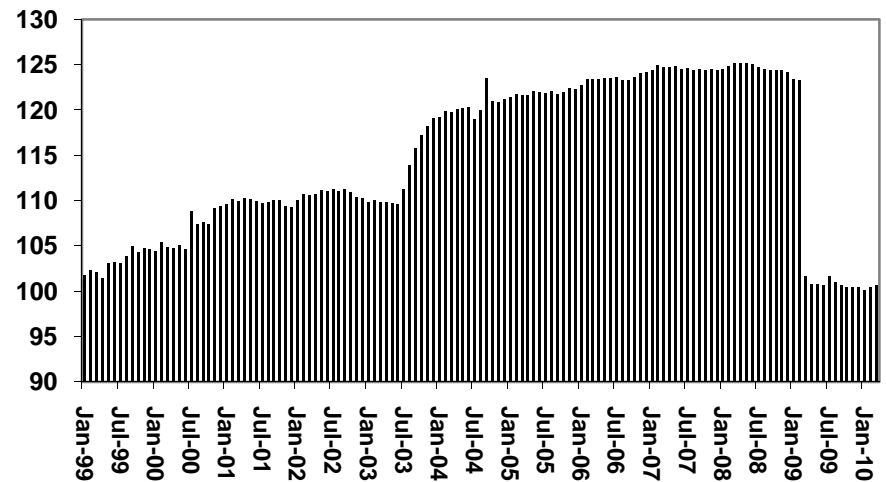
**Recipients**



**Payments**



**Average Payment Per Recipient**



**TABLE 1A  
CA-UP**

**CASH ASSISTANCE UNEMPLOYED PARENT PROGRAM: ARIZONA 1/**

	MARCH 2010							CHANGE FROM			FEBRUARY 2010			MARCH 2009		
	FAMILIES (CASES)	PERSONS (RECIP.)	ADULTS	CHILDREN	TOTAL PAYMENTS	AVERAGE PAYMENT/ CASE	AVERAGE PAYMENT/ RECIP.	FAMILIES (CASES)	PERSONS (RECIP.)	TOTAL PAYMENTS	FAMILIES (CASES)	PERSONS (RECIP.)	TOTAL PAYMENTS			
ARIZONA	1,022	3,578	1,346	2,232	283,234	277.14	79.16	(124)	(410)	(37,532)	(504)	(1,850)	(153,253)			
DISTRICT I																
MARICOPA	735	2,526	860	1,666	201,009	273.48	79.58	(71)	(191)	(20,608)	(200)	(692)	(62,495)			
DISTRICT II																
PIMA	161	589	276	313	47,170	292.98	80.08	(21)	(97)	(7,863)	(113)	(445)	(34,420)			
DISTRICT III																
APACHE	1	3	2	1	278	278.00	92.67	(1)	(8)	(355)	(1)	(3)	(272)			
COCONINO	0	0	0	0	0	0.00	0.00	(1)	(4)	(335)	(7)	(29)	(2,259)			
NAVAJO	13	52	25	27	4,183	321.77	80.44	(5)	(15)	(1,550)	(42)	(153)	(13,338)			
YAVAPAI	8	21	4	17	1,866	233.25	88.86	0	(6)	(121)	(19)	(64)	(4,462)			
DISTRICT IV																
LA PAZ	1	3	2	1	175	175.00	58.33	(1)	(3)	(141)	(4)	(16)	(1,256)			
MOHAVE	22	85	41	44	6,432	292.36	75.67	0	(3)	(386)	(23)	(85)	(6,874)			
YUMA	15	57	23	34	4,274	284.93	74.98	(4)	(19)	(1,366)	(6)	(17)	(1,848)			
DISTRICT V																
GILA	4	16	8	8	1,260	315.00	78.75	(2)	(2)	41	(3)	(11)	(614)			
PINAL	52	196	89	107	14,071	270.60	71.79	(8)	(30)	(2,498)	(57)	(239)	(17,759)			
DISTRICT VI																
COCHISE	6	16	8	8	1,414	235.67	88.38	(6)	(19)	(1,284)	(19)	(59)	(4,510)			
GRAHAM	2	6	4	2	556	278.00	92.67	(1)	(3)	(175)	(7)	(26)	(2,090)			
GREENLEE	1	4	2	2	335	335.00	83.75	(1)	(3)	(278)	(1)	(4)	(335)			
SANTA CRUZ	1	4	2	2	211	211.00	52.75	(2)	(7)	(613)	(2)	(7)	(721)			

1/EXCLUDES: PRIOR MONTH NET TOTALS OF: 70 CASES; 279 RECIPIENTS; \$26,813.  
GRANT DIVERSION TOTALS OF: 0 CASES; \$0.  
ZERO PAY TOTALS OF 66 CASES; 291 RECIPIENTS.

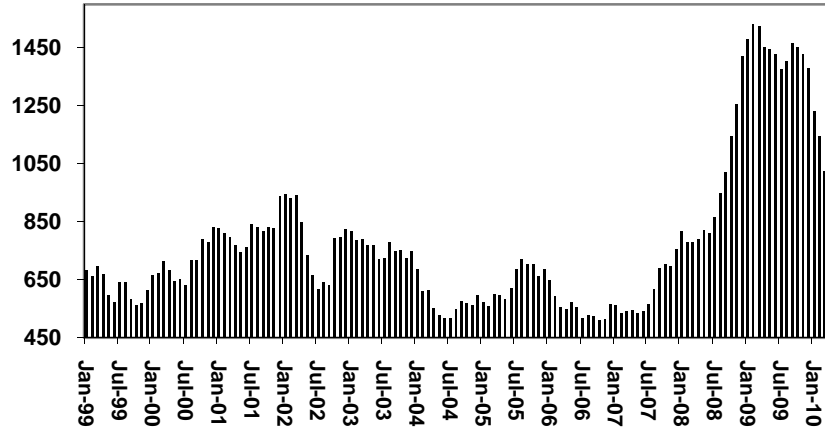
	CURRENT MO. CASES	CURRENT MO. RECIP.	CURRENT MO. DOLLARS	PRIOR MO. CASES	PRIOR MO. RECIP.	PRIOR MO. DOLLARS
PASQUAYQUI	17	73	\$6,534	2	4	\$239
WM APACHE	5	22	\$1,549	0	0	\$0
SALT RIVER	0	0	\$0	0	0	\$0
SAN CARLOS	0	0	\$0	0	0	\$0
HOPi	0	0	\$0	0	0	\$0
<b>TOTAL</b>	<b>22</b>	<b>95</b>	<b>\$8,083</b>	<b>2</b>	<b>4</b>	<b>\$239</b>

CASES WITH GRANT UNDER \$100 (SEE TABLE 1C).

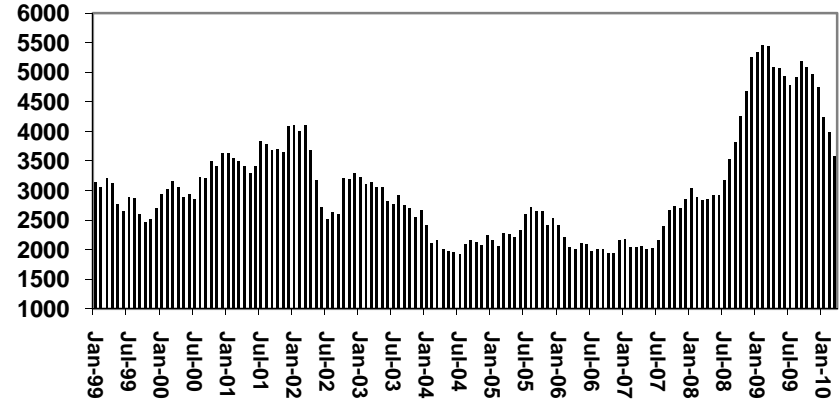
# CHART 1A

## CASH ASSISTANCE UNEMPLOYED PARENT PROGRAM COMPARISON OF CASES, RECIPIENTS, PAYMENTS & AVERAGE PAYMENTS FOR 1999, 2000, 2001, 2002, 2003, 2004, 2005, 2006, 2007, 2008, 2009, & 2010

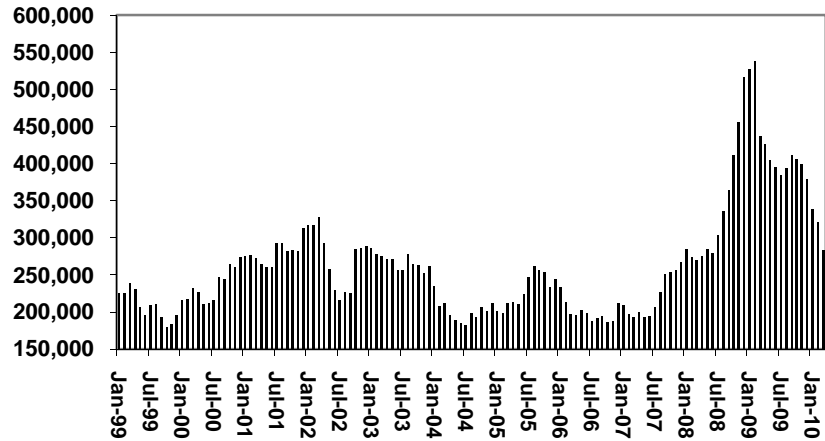
### Cases



### Recipients



### Payments



### Average Payment Per Recipient

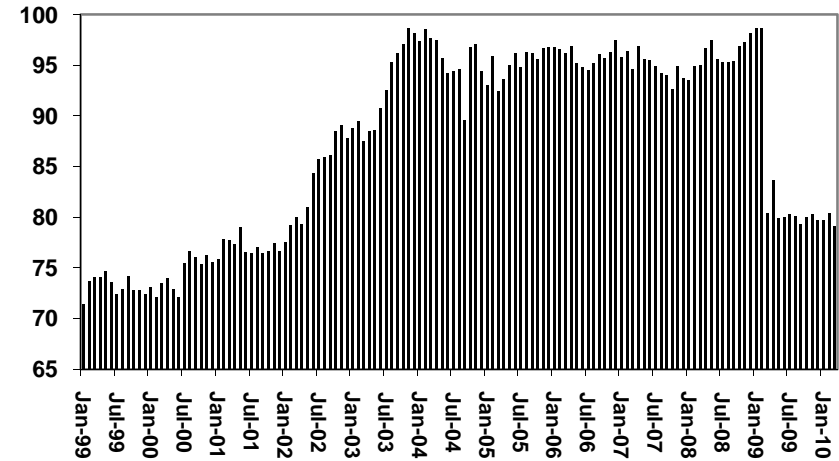




TABLE 1B 1/

CASH ASSISTANCE: ARIZONA  
 CASES WITH GRANT UNDER \$100

	MARCH 2010							CHANGE FROM					
								FEBRUARY 2010			MARCH 2009		
	FAMILIES (CASES)	PERSONS (RECIP.)	ADULTS	CHILDREN	TOTAL PAYMENTS	AVERAGE PAYMENT/ CASE	AVERAGE PAYMENT/ RECIP.	FAMILIES (CASES)	PERSONS (RECIP.)	TOTAL PAYMENTS	FAMILIES (CASES)	PERSONS (RECIP.)	TOTAL PAYMENTS
ARIZONA	934	1,833	484	1,349	63,703	68.20	34.75	75	122	2,495	(86)	(237)	(7,064)
DISTRICT I													
MARICOPA	592	1,193	288	905	39,745	67.14	33.32	33	48	915	(34)	(95)	(2,709)
DISTRICT II													
PIMA	153	286	92	194	10,310	67.39	36.05	11	9	(427)	0	(11)	(519)
DISTRICT III													
APACHE	0	0	0	0	0	0.00	0.00	0	0	0	(5)	(13)	(336)
COCONINO	3	8	3	5	277	92.33	34.63	(1)	(1)	(101)	(2)	(4)	(66)
NAVAJO	14	31	7	24	768	54.86	24.77	4	14	196	1	8	(398)
YAVAPAI	21	43	13	30	1,209	57.57	28.12	9	25	431	(16)	(25)	(1,292)
DISTRICT IV													
LA PAZ	13	21	9	12	867	66.69	41.29	7	13	363	10	15	556
MOHAVE	39	83	27	56	2,984	76.51	35.95	3	5	507	(5)	(3)	36
YUMA	16	30	10	20	1,248	78.00	41.60	0	(10)	68	(8)	(14)	(836)
DISTRICT V													
GILA	13	19	5	14	714	54.92	37.58	1	4	(17)	2	0	(40)
PINAL	42	74	19	55	3,252	77.43	43.95	7	13	355	(10)	(44)	(301)
DISTRICT VI													
COCHISE	21	32	8	24	1,699	80.90	53.09	2	3	197	(10)	(27)	(613)
GRAHAM	3	3	1	2	276	92.00	92.00	(2)	(3)	(144)	(4)	(12)	(193)
GREENLEE	0	0	0	0	0	0.00	0.00	0	0	0	0	0	0
SANTA CRUZ	4	10	2	8	354	88.50	35.40	1	2	152	(5)	(12)	(353)

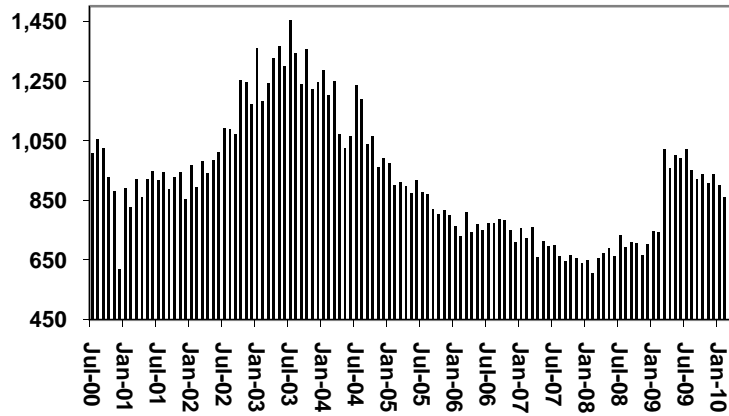
EXCLUDES: PRIOR MONTH NET TOTALS OF 588 CASES; 1,225 RECIPIENTS; \$36,444.

# CHART 1B

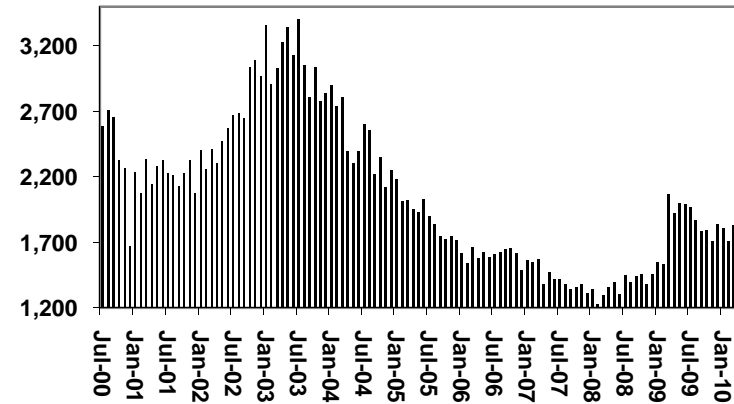
## CASH ASSISTANCE PROGRAM CASES WITH GRANT UNDER \$100

FOR 1999, 2000, 2001, 2002, 2003, 2004, 2005, 2006, 2007, 2008, 2009, & 2010

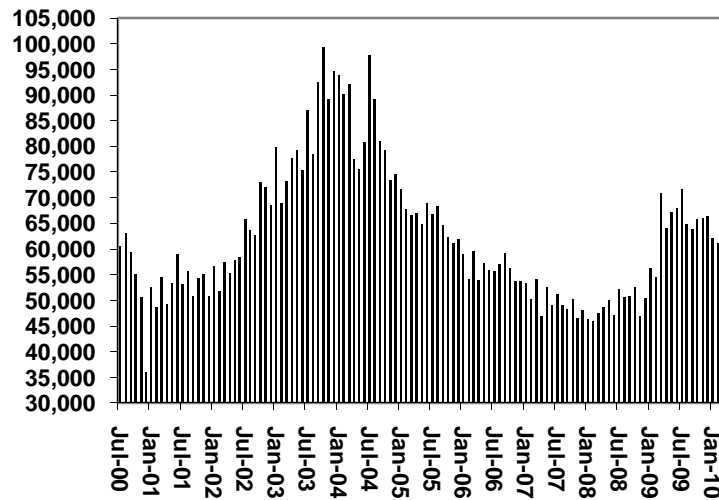
Cases



Recipients



Payments



Average Payment Per Recipient

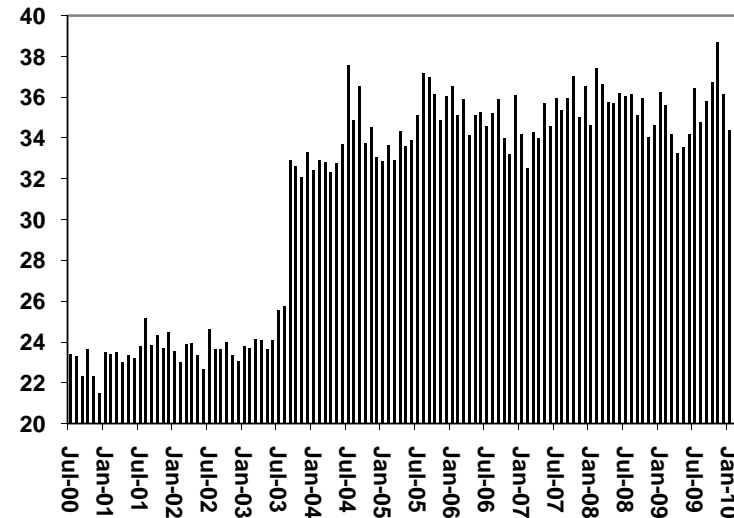


TABLE 1C 1/

CASH ASSISTANCE UNEMPLOYED PARENT PROGRAM: ARIZONA  
 CASES WITH GRANT UNDER \$100

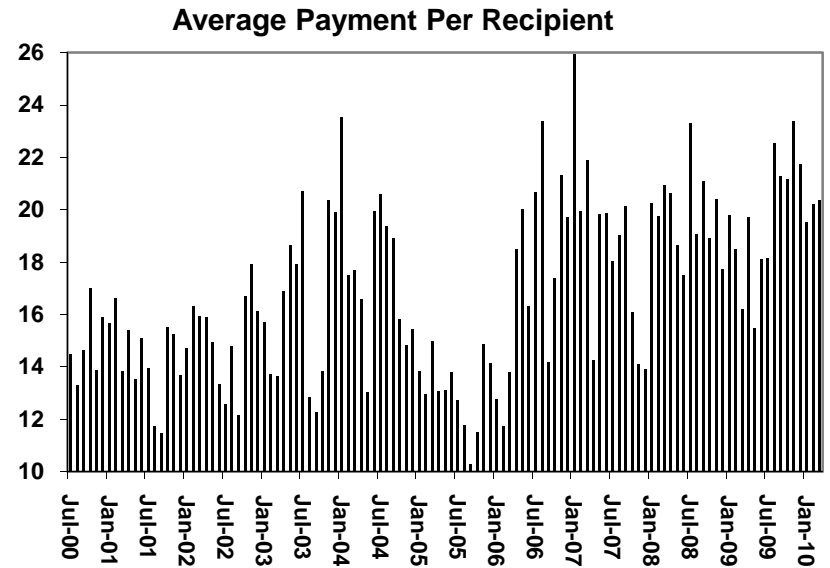
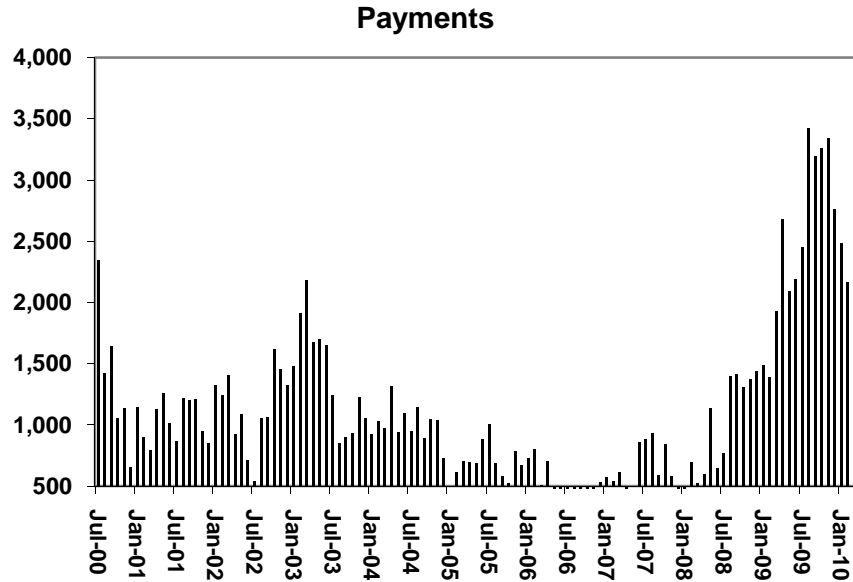
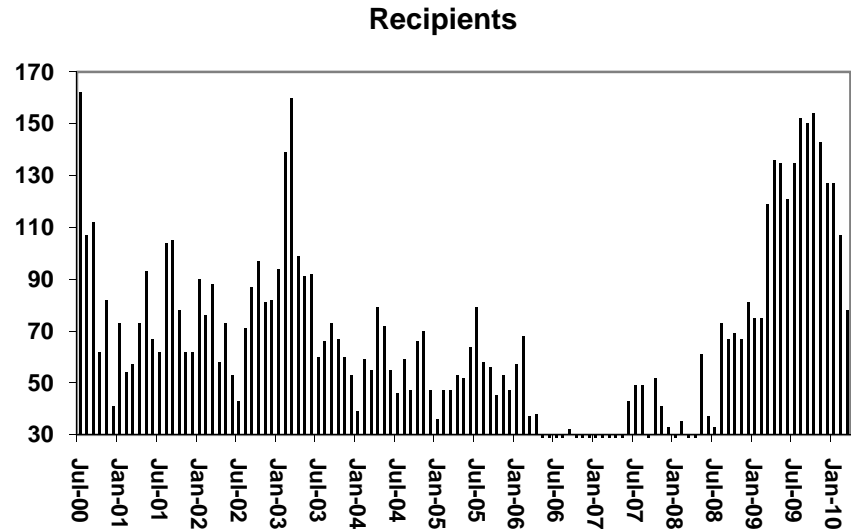
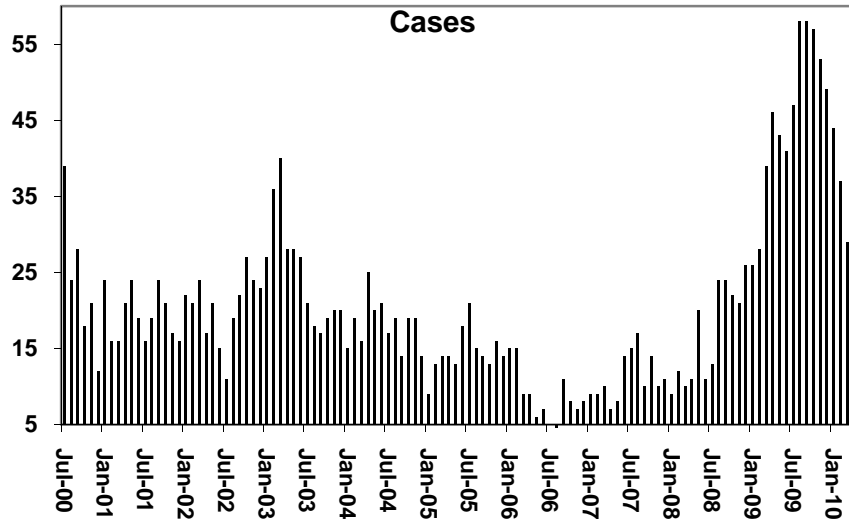
	MARCH 2010							CHANGE FROM					
								FEBRUARY 2010			MARCH 2009		
	FAMILIES (CASES)	PERSONS (RECIP.)	ADULTS	CHILDREN	TOTAL PAYMENTS	AVERAGE PAYMENT/ CASE	AVERAGE PAYMENT/ RECIP.	FAMILIES (CASES)	PERSONS (RECIP.)	TOTAL PAYMENTS	FAMILIES (CASES)	PERSONS (RECIP.)	TOTAL PAYMENTS
ARIZONA	29	78	17	61	1,588	54.76	20.36	(8)	(29)	(575)	(10)	(41)	(339)
DISTRICT I													
MARICOPA	29	78	17	61	1,588	54.76	20.36	(4)	(18)	(307)	4	2	391
DISTRICT II													
PIMA	0	0	0	0	0	0.00	0.00	(1)	(2)	(63)	(6)	(19)	(286)
DISTRICT III													
APACHE	0	0	0	0	0	0.00	0.00	0	0	0	0	0	0
COCONINO	0	0	0	0	0	0.00	0.00	0	0	0	0	0	0
NAVAJO	0	0	0	0	0	0.00	0.00	(1)	(3)	(73)	(1)	(3)	(98)
YAVAPAI	0	0	0	0	0	0.00	0.00	(1)	(2)	(90)	(1)	(3)	(39)
DISTRICT IV													
LA PAZ	0	0	0	0	0	0.00	0.00	0	0	0	0	0	0
MOHAVE	0	0	0	0	0	0.00	0.00	0	0	0	(2)	(7)	(126)
YUMA	0	0	0	0	0	0.00	0.00	0	0	0	0	0	0
DISTRICT V													
GILA	0	0	0	0	0	0.00	0.00	(1)	(4)	(42)	(3)	(8)	(98)
PINAL	0	0	0	0	0	0.00	0.00	(1)	(4)	(42)	(3)	(8)	(98)
DISTRICT VI													
COCHISE	0	0	0	0	0	0.00	0.00	0	0	0	0	0	0
GRAHAM	0	0	0	0	0	0.00	0.00	0	0	0	0	0	0
GREENLEE	0	0	0	0	0	0.00	0.00	0	0	0	0	0	0
SANTA CRUZ	0	0	0	0	0	0.00	0.00	0	0	0	(1)	(3)	(83)

EXCLUDES: PRIOR MONTH NET TOTALS OF 33 CASES; 94 RECIPIENTS; \$2,034.

# CHART 1C

## CASH ASSISTANCE UNEMPLOYED PARENT PROGRAM CASES WITH GRANT UNDER \$100

FOR 1999, 2000, 2001, 2002, 2003, 2004, 2005, 2006, 2007, 2008, 2009, & 2010



**TABLE 4**

**TUBERCULOSIS CONTROL: ARIZONA 1/**

	MARCH 2010					CHANGE FROM					
						FEBRUARY 2010			MARCH 2009		
	NUMBER OF CASES	PERSONS (RECIP.)	TOTAL PAYMENTS	AVERAGE PAYMENT/ CASE	AVERAGE PAYMENT/ RECIP.	NUMBER OF CASES	PERSONS (RECIP.)	TOTAL PAYMENTS	NUMBER OF CASES	PERSONS (RECIP.)	TOTAL PAYMENTS
ARIZONA	1	1	173	173.00	173.00	0	0	0	(2)	(2)	(281)
DISTRICT I											
MARICOPA	1	1	173	173.00	173.00	0	0	0	(1)	(1)	(108)
DISTRICT II											
PIMA	0	0	0	0.00	0.00	0	0	0	0	0	0
DISTRICT III	0	0	0	0.00	0.00	0	0	0	0	0	0
APACHE	0	0	0	0.00	0.00	0	0	0	0	0	0
COCONINO	0	0	0	0.00	0.00	0	0	0	0	0	0
NAVAJO	0	0	0	0.00	0.00	0	0	0	0	0	0
YAVAPAI	0	0	0	0.00	0.00	0	0	0	0	0	0
DISTRICT IV	0	0	0	0.00	0.00	0	0	0	(1)	(1)	(173)
LA PAZ	0	0	0	0.00	0.00	0	0	0	0	0	0
MOHAVE	0	0	0	0.00	0.00	0	0	0	0	0	0
YUMA	0	0	0	0.00	0.00	0	0	0	(1)	(1)	(173)
DISTRICT V	0	0	0	0.00	0.00	0	0	0	0	0	0
GILA	0	0	0	0.00	0.00	0	0	0	0	0	0
PINAL	0	0	0	0.00	0.00	0	0	0	0	0	0
DISTRICT VI	0	0	0	0.00	0.00	0	0	0	0	0	0
COCHISE	0	0	0	0.00	0.00	0	0	0	0	0	0
GRAHAM	0	0	0	0.00	0.00	0	0	0	0	0	0
GREENLEE	0	0	0	0.00	0.00	0	0	0	0	0	0
SANTA CRUZ	0	0	0	0.00	0.00	0	0	0	0	0	0

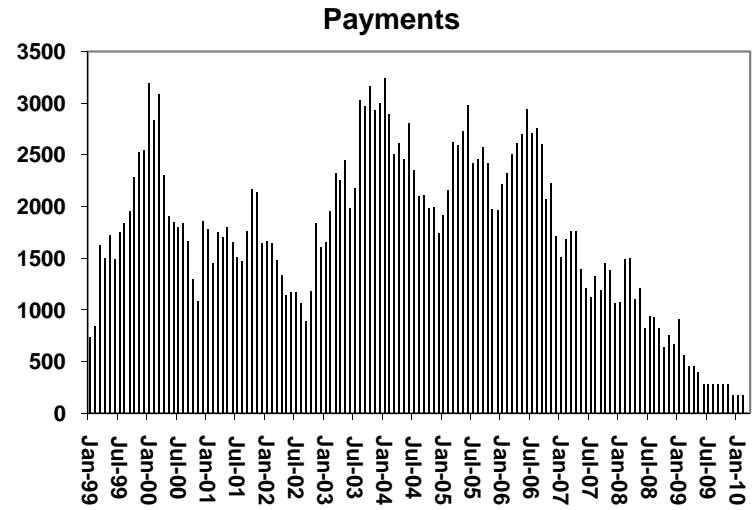
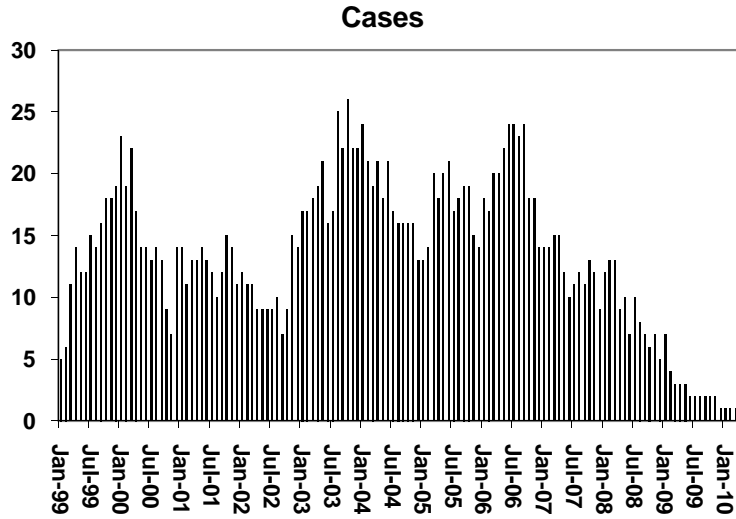
1/EXCLUDES: PRIOR MONTH NET TOTALS OF : 0 CASES; 0 RECIPIENTS; \$0.

# CHART 4

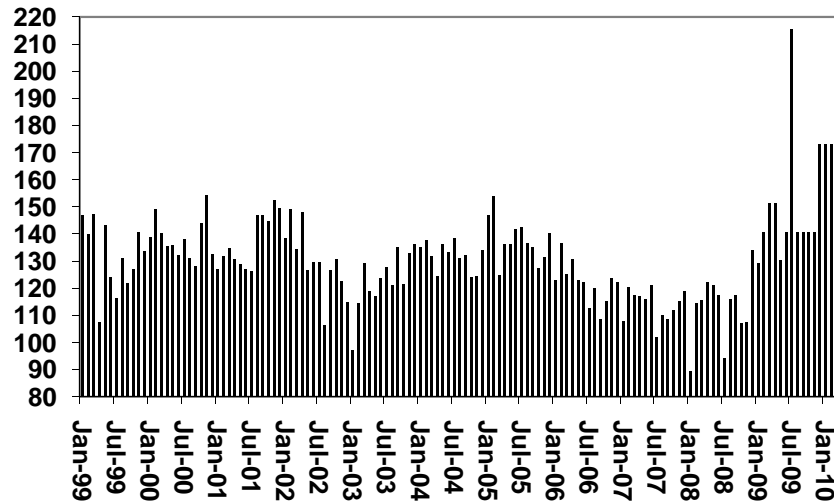
## TUBERCULOSIS CONTROL PROGRAM

### COMPARISON OF CASES, PAYMENTS & AVERAGE PAYMENTS

FOR 1999, 2000, 2001, 2002, 2003, 2004, 2005, 2006, 2007, 2008, 2009, & 2010



#### Average Payment Per Case



**TABLE 6**

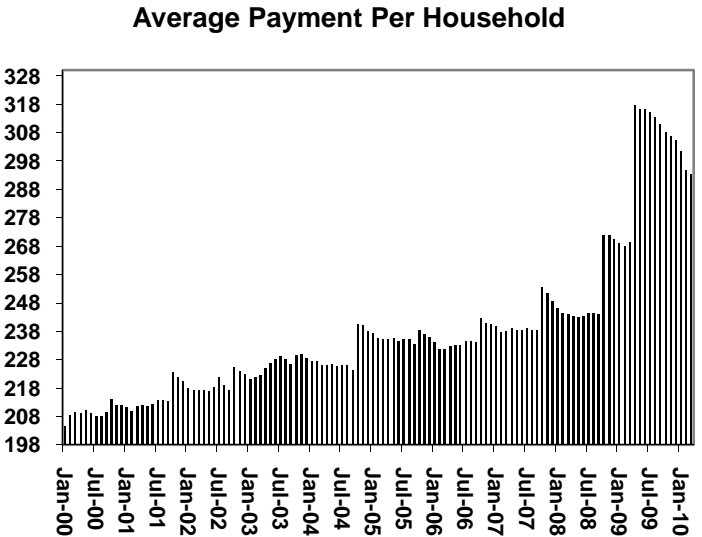
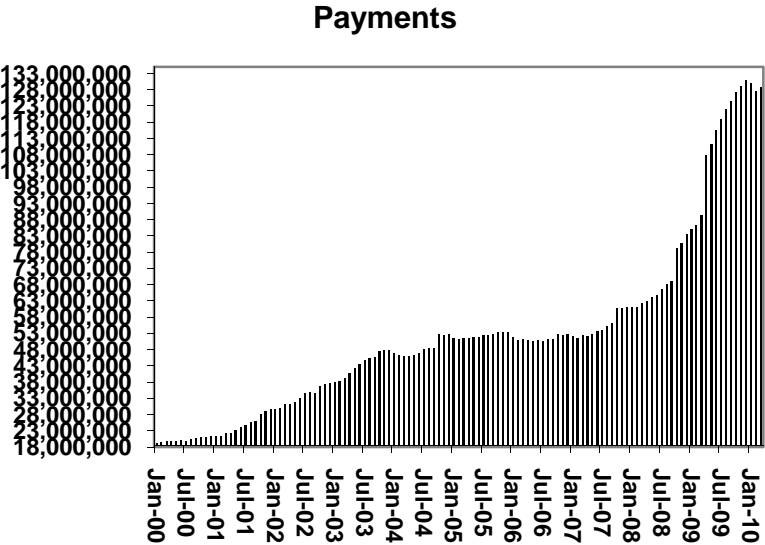
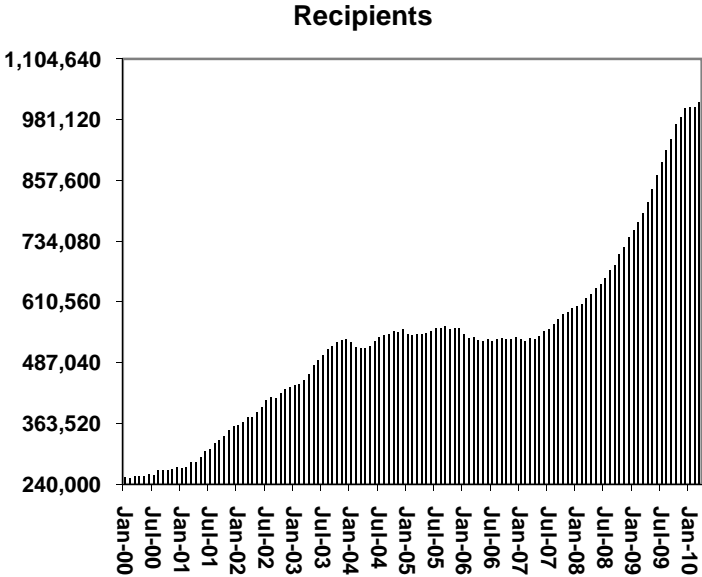
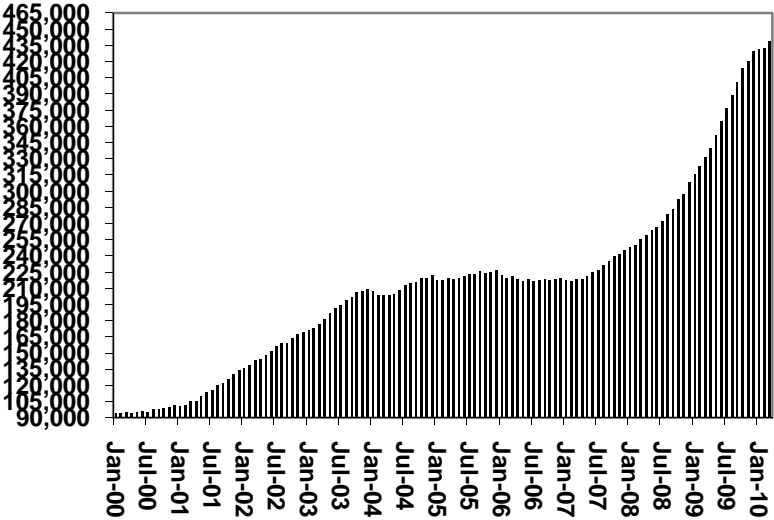
**SUPPLEMENTAL NUTRITION ASSISTANCE PROGRAM: ARIZONA 1/**

	CHANGE FROM												
	MARCH 2010				FEBRUARY 2010			MARCH 2009					
	HOUSEHOLDS	PERSONS	ADULTS	CHILDREN	TOTAL COUPON ISSUANCE	AVERAGE ALLOT./ HOUSEHOLD	AVERAGE ALLOT./ PERSON	HOUSEHOLDS	PERSONS	TOTAL COUPON ISSUANCE	HOUSEHOLDS	PERSONS	TOTAL COUPON ISSUANCE
ARIZONA	439,328	1,017,100	513,605	503,495	128,813,683	293.21	126.65	6,722	11,095	1,320,926	107,935	225,856	39,503,270
DISTRICT I													
MARICOPA	240,711	558,189	263,306	294,883	71,140,118	295.54	127.45	4,193	7,065	832,902	67,822	143,309	23,239,586
DISTRICT II													
PIMA	74,681	160,942	88,065	72,877	20,780,643	278.26	129.12	1,051	1,585	182,161	17,461	33,463	6,353,855
DISTRICT III													
APACHE	9,495	27,286	14,489	12,797	3,330,857	350.80	122.07	64	32	(242)	2,510	6,405	1,105,305
COCONINO	9,261	23,124	12,223	10,901	2,891,850	312.26	125.06	63	22	3,723	1,943	2,666	702,269
NAVAJO	12,398	33,088	17,795	15,293	4,091,743	330.03	123.66	130	129	14,814	614	742	636,447
YAVAPAI	13,877	28,368	16,750	11,618	3,528,979	254.30	124.40	215	409	28,164	3,474	6,848	1,123,645
DISTRICT IV													
LA PAZ	1,883	3,874	2,240	1,634	500,841	265.98	129.28	19	30	6,477	277	513	113,259
MOHAVE	19,338	41,415	24,576	16,839	5,232,938	270.60	126.35	288	525	69,162	4,107	9,978	1,664,968
YUMA	14,070	36,742	18,455	18,287	4,245,294	301.73	115.54	27	(51)	(6,256)	2,533	6,325	1,247,084
DISTRICT V													
GILA	5,611	12,341	7,225	5,116	1,605,674	286.17	130.11	97	161	21,951	1,145	2,258	452,299
PINAL	20,234	50,034	25,845	24,189	6,362,860	314.46	127.17	499	1,035	142,416	3,273	6,813	1,514,432
DISTRICT VI													
COCHISE	9,889	21,605	12,195	9,410	2,686,945	271.71	124.37	32	66	3,368	1,389	2,889	672,795
GRAHAM	3,264	7,792	4,280	3,512	969,714	297.09	124.45	24	9	11,529	623	1,506	273,147
GREENLEE	526	1,216	674	542	145,326	276.29	119.51	(6)	(19)	(2,268)	164	416	60,746
SANTA CRUZ	4,090	11,084	5,487	5,597	1,299,901	317.82	117.28	26	97	13,025	600	1,725	343,433

1/EXCLUDES: PRIOR MONTH NET TOTALS OF : 10,779 CASES; 25,648 RECIPIENTS; \$1,837,606.  
 AGED CANCELATIONS: 7,264 CASES; 11,806 RECIPIENTS; 335,207.  
 SNAP COUPON CONVERSIONS: 0 CASES; 0 RECIPIENTS; \$0.  
 SNAP REINSTATED: 0 CASES; \$0.  
 SNAP ZERO PAY: 13,766 CASES; 55,570 RECIPIENTS.  
 SNAP CHILD ONLY: 41,293; 97,100 RECIPIENTS; \$12,606,747.

# CHART 6

## SUPPLEMENTAL NUTRITION ASSISTANCE PROGRAM (SNAP) COMPARISON OF HOUSEHOLDS, RECIPIENTS, PAYMENTS & AVERAGE PAYMENTS FOR 1999, 2000, 2001, 2002, 2003, 2004, 2005, 2006, 2007, 2008, 2009, & 2010





**TABLE 7A**  
**MEDICAL ASSISTANCE PROGRAM**

**RECIPIENTS**

**MARCH 2010**

	SOBRA WOMAN 133% FPL	SOBRA CHILD	ADULT W/O CHILD 100% FPL	FOSTER CARE	1931 36% FPL	FEDERAL EMERGENCY SERVICES	INFANTS	ADULT W/O CHILD 40% FPL	MEDICAL W/SPEND DOWN	SOBRA WOMAN 100% FPL	SOBRA CHILD 100% FPL	TRANSITIONAL MEDICAL T1 - T4	1931 100% FPL	YATI	OTHER	TOTAL CASES
ARIZONA	10,257	65,510	60,403	11,923	329,149	70,333	50,108	158,838	6,852	3,990	228,552	44,796	120,720	337	26,903	1,188,671
DISTRICT I																
MARICOPA	5,537	37,002	29,095	6,204	184,731	55,216	30,125	80,558	3,700	2,064	133,969	22,563	62,101	212	13,880	666,957
DISTRICT II																
PIMA	1,506	9,882	11,150	3,278	48,032	7,446	6,848	27,857	848	620	32,910	6,655	19,698	72	4,521	181,323
DISTRICT III																
APACHE	208	1,421	1,040	43	10,820	120	1,004	5,338	141	92	4,797	785	3,121	1	368	29,299
COCONINO	303	1,386	1,635	130	8,197	445	1,132	4,644	136	130	5,059	1,006	3,114	10	392	27,719
NAVAJO	314	2,257	1,871	145	12,243	350	1,419	6,575	212	137	5,954	1,364	4,110	6	568	37,525
YAVAPAI	396	1,745	2,726	442	7,401	1,464	1,341	5,062	310	129	6,202	1,474	4,042	12	1,203	33,949
DISTRICT IV																
LA PAZ	32	226	273	18	1,230	159	144	769	30	21	706	194	417	0	155	4,374
MOHAVE	407	2,181	3,123	310	11,554	749	1,560	7,569	510	160	8,345	1,753	5,297	1	1,501	45,020
YUMA	523	2,448	2,688	299	10,517	1,553	1,951	4,446	296	215	9,522	4,343	5,918	4	1,231	45,954
DISTRICT V																
GILA	642	4,684	3,649	701	21,457	1,659	2,750	10,397	416	234	11,985	2,589	7,083	14	1,636	69,896
PINAL	118	663	802	96	4,328	133	536	2,574	102	40	1,974	461	1,350	1	338	13,516
	524	4,021	2,847	605	17,129	1,526	2,214	7,823	314	194	10,011	2,128	5,733	13	1,298	56,380
DISTRICT VI																
COCHISE	186	1,186	1,743	245	6,842	547	909	3,123	145	83	4,192	950	2,727	3	833	23,714
GRAHAM	94	469	480	71	2,468	54	391	1,298	48	44	1,525	405	1,013	0	142	8,502
GREENLEE	9	54	76	8	400	7	58	177	13	3	295	64	185	1	32	1,382
SANTA CRUZ	100	569	854	29	3,257	564	476	1,025	47	58	3,091	651	1,894	1	441	13,057

**TABLE 7B**  
**MEDICAL ASSISTANCE PROGRAM**  
**RECIPIENTS**

**CHANGE FROM**  
**FEBRUARY 2010**

	SOBRA WOMAN 133% FPL	SOBRA CHILD	ADULT W/O CHILD 100% FPL	FOSTER CARE	1931 36% FPL	FEDERAL EMERGENCY SERVICES	INFANTS	ADULT W/O CHILD 40% FPL	MEDICAL W/SPEND DOWN	SOBRA WOMAN 100% FPL	SOBRA CHILD 100% FPL	TRANSITIONAL MEDICAL T1 - T4	1931 100% FPL	YATI	OTHER	TOTAL CASES
ARIZONA	210	367	1,324	69	1,342	(3,576)	94	2,330	569	128	2,570	570	2,223	(4)	407	8,623
DISTRICT I																
MARICOPA	187	405	742	40	1,144	(2,653)	196	1,666	344	21	1,843	599	1,588	1	297	6,420
DISTRICT II																
PIMA	(51)	(50)	145	29	(215)	(682)	(72)	199	2	81	318	42	292	(2)	67	103
DISTRICT III																
APACHE	15	20	22	(2)	(19)	(2)	(5)	67	32	0	62	(32)	79	0	(7)	230
COCONINO	15	14	10	(2)	(40)	(19)	5	72	34	9	(21)	15	26	0	2	120
NAVAJO	12	(5)	30	6	36	2	(23)	62	22	(2)	(12)	58	75	3	(4)	260
YAVAPAI	14	(20)	84	(6)	26	(36)	10	24	(22)	2	62	(20)	68	(1)	10	195
DISTRICT IV																
LA PAZ	1	10	12	0	19	2	3	(7)	5	1	(11)	(2)	(14)	0	0	19
MOHAVE	(1)	(1)	77	2	244	(22)	(49)	136	50	12	83	60	87	(4)	43	717
YUMA	13	1	17	1	(136)	(58)	(1)	65	27	(9)	6	(33)	0	0	0	(107)
DISTRICT V																
GILA	3	3	3	(1)	29	(17)	10	33	4	4	(25)	2	(26)	0	9	31
PINAL	5	27	161	2	57	(38)	41	(2)	47	4	196	(89)	71	0	(14)	468
DISTRICT VI																
COCHISE	(2)	(9)	38	0	142	(41)	6	(11)	22	(1)	23	(4)	(30)	(1)	3	135
GRAHAM	(2)	(17)	(1)	0	31	2	(19)	13	2	1	0	(18)	(13)	0	1	(20)
GREENLEE	0	1	(1)	0	(7)	0	(6)	4	1	(2)	0	11	1	0	2	4
SANTA CRUZ	1	(12)	(15)	0	31	(14)	(2)	9	(1)	7	46	(19)	19	0	(2)	48

**TABLE 7C**  
**MEDICAL ASSISTANCE PROGRAM**  
**RECIPIENTS**

**CHANGE FROM**

**MARCH 2009**

	SOBRA WOMAN 133% FPL	SOBRA CHILD	ADULT W/O CHILD 100% FPL	FOSTER CARE	1931 36% FPL	FEDERAL EMERGENCY SERVICES	INFANTS	ADULT W/O CHILD 40% FPL	MEDICAL W/SPEND DOWN	SOBRA WOMAN 100% FPL	SOBRA CHILD 100% FPL	TRANSITIONAL MEDICAL T1 - T4	3E 1931 100% FPL	YATI	OTHER	TOTAL CASES
ARIZONA	(1,210)	855	16,403	781	19,240	(17,416)	2,029	46,469	1,182	320	42,239	2,391	27,879	53	864	142,079
DISTRICT I																
MARICOPA	(381)	500	9,543	544	14,696	(13,210)	1,674	27,578	744	196	27,607	2,267	17,159	62	922	89,901
DISTRICT II																
PIMA	(269)	130	2,853	120	1,800	(3,137)	52	7,829	32	49	4,941	(402)	3,752	(13)	(84)	17,653
DISTRICT III	(176)	(112)	1,340	10	787	(219)	144	5,147	95	14	3,813	191	2,857	5	1	13,897
APACHE	(5)	68	(80)	1	(180)	11	31	1,253	41	13	886	(60)	687	(1)	(13)	2,652
COCONINO	(37)	(42)	425	(4)	304	(114)	(11)	1,195	12	17	880	(45)	662	5	(18)	3,229
NAVAJO	(75)	(9)	326	13	271	(13)	37	1,438	27	(30)	744	23	673	2	(56)	3,371
YAVAPAI	(59)	(129)	669	0	392	(103)	87	1,261	15	14	1,303	273	835	(1)	88	4,645
DISTRICT IV	(146)	20	1,290	88	1,097	(359)	27	2,693	172	39	2,790	(146)	1,950	0	(37)	9,478
LA PAZ	(3)	(6)	59	10	(3)	(11)	(14)	99	(6)	12	64	33	64	0	(15)	283
MOHAVE	(65)	(8)	772	41	541	(148)	8	1,478	75	(15)	1,130	(77)	840	(2)	85	4,655
YUMA	(78)	34	459	37	559	(200)	33	1,116	103	42	1,596	(102)	1,046	2	(107)	4,540
DISTRICT V	(82)	282	934	39	546	(293)	64	2,085	133	11	1,724	431	1,274	(1)	47	7,194
GILA	(29)	(8)	190	13	49	(36)	32	360	1	(4)	82	93	154	1	2	900
PINAL	(53)	290	744	26	497	(257)	32	1,725	132	15	1,642	338	1,120	(2)	45	6,294
DISTRICT VI	(156)	35	443	(20)	314	(198)	68	1,137	6	11	1,364	50	887	0	15	3,956
COCHISE	(71)	19	313	(16)	220	(145)	56	587	3	2	502	(4)	243	(2)	30	1,737
GRAHAM	(43)	(11)	53	(5)	(54)	(4)	(5)	239	7	6	328	46	198	0	(6)	749
GREENLEE	(15)	8	26	2	79	(3)	(4)	42	3	(3)	135	38	95	1	15	419
SANTA CRUZ	(27)	19	51	(1)	69	(46)	21	269	(7)	6	399	(30)	351	1	(24)	1,051

# CHART 7

## MEDICAL ASSISTANCE PROGRAM COMPARISON OF RECIPIENTS

FOR 1999, 2000, 2001, 2002, 2003, 2004, 2005, 2006, 2007, 2008, 2009, & 2010

Total Recipients

