



DEPARTMENT OF ECONOMIC SECURITY

Your Partner For A Stronger Arizona

State of Arizona

Department of Economic Security

Family Assistance Administration

Statistical Bulletin

April, 2010

Phone: (602) 542-3678

<https://www.azdes.gov/appreports.aspx>

**** STATISTICAL BULLETIN ****
ARIZONA DEPARTMENT OF ECONOMIC SECURITY
FAMILY ASSISTANCE ADMINISTRATION
BOX 6123, PHOENIX, ARIZONA 85005
PHONE (602) 542-3678

APRIL 2010

THIS ISSUE OF THE STATISTICAL BULLETIN COMPARES APRIL 2010 DATA FOR EACH OF THE INDICATED PROGRAMS WITH THE INFORMATION FOR MARCH 2010 AND APRIL 2009. STATEWIDE SUMMARIES OF ACTIVITY WITHIN EACH OF THE SPECIFIC PROGRAMS FOR THIS REPORT PERIOD ARE DISCUSSED BELOW. THE TABLES COMPARE CURRENT AND PRIOR MONTH DATA. DISTRICT AND COUNTY COMPARISONS ARE PROVIDED WITHIN THIS BULLETIN

TANF SUMMARY

COMPARING TO MARCH 2010, APRIL 2010 CASES DECREASED BY 1,048 (2.87%) TO 35,451. RECIPIENTS DECREASED BY 2,574 (3.27%) TO 76,258. PAYMENTS DECREASED BY \$228,756 (2.96%) TO \$7,502,187. AVERAGE PAYMENT PER CASE DECREASED BY \$0.19 (0.09%) TO \$211.62. PAYMENT PER RECIPIENT INCREASED BY \$0.31 (0.32%) TO \$98.38.

COMPARING TO APRIL 2009, APRIL 2010 CASES DECREASED BY 3,352 (8.64%). RECIPIENTS DECREASED BY 8,596 (10.13%). TOTAL PAYMENTS DECREASED BY \$815,716 (9.81%). THE AVERAGE PAYMENT PER CASE DECREASED BY \$2.74 (1.28%). THE AVERAGE PAYMENT PER RECIPIENT INCREASED BY \$0.35 (0.36%).

CASH ASSISTANCE (CA)

COMPARING TO MARCH 2010, APRIL 2010 CASES DECREASED BY 844 (2.45%) TO 33,670. RECIPIENTS DECREASED BY 1,999 (2.73%) TO 71,344. PAYMENTS DECREASED BY \$182,170 (2.47%) TO \$7,200,248. AVERAGE PAYMENT PER CASE DECREASED BY \$0.05 (0.02%) TO \$213.85. PAYMENT PER RECIPIENT INCREASED BY \$0.26 (0.26%) TO \$100.92.

COMPARING TO APRIL 2009, APRIL 2010 CASES DECREASED BY 2,678 (7.37%). RECIPIENTS DECREASED BY 6,362 (8.19%). TOTAL PAYMENTS DECREASED BY \$625,449 (7.99%). THE AVERAGE PAYMENT PER CASE DECREASED BY \$1.45 (0.67%). THE AVERAGE PAYMENT PER RECIPIENT INCREASED BY \$0.21 (0.21%).

CASH ASSISTANCE UNEMPLOYED PARENT PROGRAM (CA-UP)

COMPARING TO MARCH 2010, APRIL 2010 CASES DECREASED BY 159 (15.56%) TO 863. RECIPIENTS DECREASED BY 535 (14.95%) TO 3,043. PAYMENTS DECREASED BY \$42,378 (14.96%) TO \$240,856. AVERAGE PAYMENT PER CASE INCREASED BY \$1.95 (0.70%) TO \$279.09. PAYMENT PER RECIPIENT DECREASED BY \$0.01 (0.01%) TO \$79.15.

COMPARING TO APRIL 2009, APRIL 2010 CASES DECREASED BY 588 (40.52%). RECIPIENTS DECREASED BY 2,046 (40.20%). TOTAL PAYMENTS DECREASED BY \$184,747 (43.41%). THE AVERAGE PAYMENT PER CASE DECREASED BY \$14.23 (4.85%). THE AVERAGE PAYMENT PER RECIPIENT DECREASED BY \$4.48 (5.36%).

CASH ASSISTANCE WITH GRANT UNDER \$100 (CA-MOE)

COMPARING TO MARCH 2010, APRIL 2010 CASES DECREASED BY 39 (4.18%) TO 895. RECIPIENTS DECREASED BY 31 (1.69%) TO 1,802. PAYMENTS DECREASED BY \$3,658 (5.74%) TO \$60,045. AVERAGE PAYMENT PER CASE DECREASED BY \$1.11 (1.63%) TO \$67.09. AVERAGE PAYMENT PER RECIPIENT DECREASED BY \$1.43 (4.12%) TO \$33.32.

COMPARING TO APRIL 2009, APRIL 2010 CASES DECREASED BY 63 (6.58%). RECIPIENTS DECREASED BY 121 (6.29%). TOTAL PAYMENTS DECREASED BY \$3,878 (6.07%). THE AVERAGE PAYMENT PER CASE INCREASED BY \$0.36 (0.54%). THE AVERAGE PAYMENT PER RECIPIENT INCREASED BY \$0.08 (0.24%).

CASH ASSISTANCE UNEMPLOYED PARENT PROGRAM WITH GRANT UNDER \$100 (CA-UP-MOE) NEW PROGRAM STARTING 7/01

COMPARING TO MARCH 2010, APRIL 2010 CASES DECREASED BY 6 (20.69%) TO 23. RECIPIENTS DECREASED BY 9 (11.54%) TO 69. PAYMENTS DECREASED BY \$550 (34.63%) TO \$1,038. AVERAGE PAYMENT PER CASE DECREASED BY \$9.63 (17.59%) TO \$45.13. PAYMENT PER RECIPIENT DECREASED BY \$5.32 (26.13%) TO \$15.04.

COMPARING TO APRIL 2009, APRIL 2010 CASES DECREASED BY 23 (50.00%). RECIPIENTS DECREASED BY 67 (4.22%). TOTAL PAYMENTS DECREASED BY \$1,642 (61.27%). THE AVERAGE PAYMENT PER CASE DECREASED BY \$13.13 (22.54%). THE AVERAGE PAYMENT PER RECIPIENT DECREASED BY \$4.67 (23.69%).

TUBERCULOSIS CONTROL PROGRAM (TC)

COMPARING TO MARCH 2010, APRIL 2010 CASES INCREASED BY 0 (0.00%) TO 1. RECIPIENTS INCREASED BY 0 (0.00%) TO 1. PAYMENTS INCREASED BY \$0 (0.00%) TO \$173. AVERAGE PAYMENT PER CASE INCREASED BY \$38.62 (22.32%) TO \$211.62. AVERAGE PAYMENT PER RECIPIENT INCREASED BY \$0.00 (0.00%) TO \$173.00.

COMPARING TO APRIL 2009, APRIL 2010 CASES DECREASED BY 2 (66.67%). RECIPIENTS DECREASED BY 2 (66.67%). TOTAL PAYMENTS DECREASED BY \$281 (61.89%). THE AVERAGE PAYMENT PER CASE INCREASED BY \$60.29 (39.84%). THE AVERAGE PAYMENT PER RECIPIENT INCREASED BY \$21.67 (14.32%).

SUPPLEMENTAL NUTRITION ASSISTANCE PROGRAM (SNAP)

COMPARING TO MARCH 2010, APRIL 2010 SUPPLEMENTAL NUTRITION ASSISTANCE HOUSEHOLDS INCREASED BY 2,209 (0.50%) TO 441,537. PERSONS RECEIVING SUPPLEMENTAL NUTRITION ASSISTANCE INCREASED BY 3,548 (0.35%) TO 1,020,648. TOTAL COUPON ISSUANCE INCREASED BY \$308,441 (0.24%) TO \$129,122,124. THE AVERAGE HOUSEHOLD ALLOTMENT DECREASED BY \$0.77 (0.26%) TO \$292.44. THE AVERAGE ALLOTMENT PER PERSON DECREASED BY \$0.14 (0.11%) TO \$126.51.

COMPARING TO APRIL 2009, APRIL 2010 SUPPLEMENTAL NUTRITION ASSISTANCE HOUSEHOLDS INCREASED BY 101,656 (29.91%). PERSONS RECEIVING SUPPLEMENTAL NUTRITION ASSISTANCE INCREASED BY 208,289 (25.64%). TOTAL COUPON ISSUANCE INCREASED BY \$21,214,837 (19.66%). THE AVERAGE ALLOTMENT PER HOUSEHOLD DECREASED BY \$25.05 (7.89%). THE AVERAGE ALLOTMENT PER PERSON DECREASED BY \$6.32 (4.76%).

MEDICAL ASSISTANCE PROGRAM (MA) NEW TABLE INCLUDES PROP. 204 CATEGORIES

COMPARING TO MARCH 2010, APRIL 2010 TOTAL RECIPIENTS TOTAL RECIPIENTS DECREASED BY 2,440 (0.21%). SOBRA WOMEN AT 140% FPL DECREASED BY 66 (0.64%). SOBRA CHILDREN DECREASED BY 394 (0.60%). ADULTS W/O CHILD AT 100% INCREASED BY 417 (0.69%). FOSTER CARE INCREASED BY 17 (0.14%). 1931 AT 36% FPL DECREASED BY 1,797 (0.55%). EMERGENCY SERVICES DECREASED BY 3,846 (5.47%). INFANTS DECREASED BY 596 (1.19%). ADULT W/O CHILD AT 140% INCREASED BY 711 (0.45%). MEDICAL W/SPEND DOWN INCREASED BY 38 (0.55%). SOBRA WOMAN AT 100% DECREASED BY 17 (0.43%). SOBRA CHILD AT 100% INCREASED BY 1,144 (0.50%). TRANSITIONAL MEDICAL INCREASED BY 1,057 (2.36%). 1931 AT 100% INCREASED BY 903 (0.75%). YATI INCREASED BY 7 (2.08%). ALL OTHER CATEGORIES DECREASED BY 18 (0.07%).

COMPARING TO APRIL 2009, APRIL 2010 TOTAL RECIPIENTS TOTAL RECIPIENTS INCREASED BY 125,869 (11.87%). SOBRA WOMEN AT 140% FPL DECREASED BY 919 (8.27%). SOBRA CHILDREN INCREASED BY 1,955 (3.10%). ADULTS W/O CHILD AT 100% INCREASED BY 16,316 (36.66%). FOSTER CARE INCREASED BY 714 (6.36%). 1931 AT 36% FPL INCREASED BY 13,508 (4.30%). EMERGENCY SERVICES DECREASED BY 21,877 (24.76%). INFANTS INCREASED BY 1,987 (4.18%). ADULT W/O CHILD AT 140% INCREASED BY 43,711 (37.73%). MEDICAL W/SPEND DOWN INCREASED BY 1,260 (22.38%). SOBRA WOMAN AT 100% INCREASED BY 43 (1.09%). SOBRA CHILD AT 100% INCREASED BY 36,640 (18.98%). TRANSITIONAL MEDICAL INCREASED BY 6,170 (15.55%). 1931 AT 100% INCREASED BY 24,894 (25.74%). YATI INCREASED BY 57 (19.86%). ALL OTHER CATEGORIES INCREASED BY 1,410 (5.53%).

TANF SUMMARY

TABLES 1, 1A, 1B, & 1C: ARIZONA 1/

	APRIL 2010							CHANGE FROM			APRIL 2009		
	FAMILIES (CASES)	PERSONS (RECIP.)	ADULTS	CHILDREN	TOTAL PAYMENTS	AVERAGE TOTAL PAYMENT/ CASE	AVERAGE PAYMENT/ RECIP.	MARCH 2010			APRIL 2009		
								FAMILIES (CASES)	PERSONS (RECIP.)	TOTAL PAYMENTS	FAMILIES (CASES)	PERSONS (RECIP.)	TOTAL PAYMENTS
ARIZONA	35,451	76,258	18,469	57,789	7,502,187	211.62	98.38	(1,048)	(2,574)	(228,756)	(3,352)	(8,596)	(815,716)
DISTRICT I													
MARICOPA	21,835	47,882	11,202	36,680	4,596,214	210.50	95.99	(691)	(1,651)	(142,670)	(1,247)	(3,420)	(326,525)
DISTRICT II													
PIMA	5,714	11,449	2,893	8,556	1,172,191	205.14	102.38	(134)	(371)	(33,027)	(868)	(2,178)	(214,603)
DISTRICT III													
APACHE	2	5	2	3	432	216.00	86.40	1	2	293	(4)	(9)	(1,007)
COCONINO	194	414	86	328	39,750	204.90	96.01	0	3	347	(45)	(85)	(7,662)
NAVAJO	1,467	3,795	1,173	2,622	400,004	272.67	105.40	(11)	(47)	(4,493)	32	181	17,304
YAVAPAI	597	1,107	218	889	113,811	190.64	102.81	(27)	(88)	(7,424)	(165)	(399)	(34,745)
DISTRICT IV													
LA PAZ	165	341	97	244	32,147	194.83	94.27	(2)	2	364	(14)	(31)	(4,156)
MOHAVE	1,076	2,151	567	1,584	215,976	200.72	100.41	(43)	(123)	(11,455)	(222)	(580)	(52,643)
YUMA	850	1,815	351	1,464	179,090	210.69	98.67	(4)	2	1,512	(118)	(235)	(21,832)
DISTRICT V													
GILA	680	1,433	508	925	163,431	240.34	114.05	(37)	(76)	(8,441)	(35)	(97)	(12,933)
PINAL	1,651	3,527	844	2,683	336,783	203.99	95.49	(89)	(226)	(20,577)	(317)	(867)	(76,965)
DISTRICT VI													
COCHISE	731	1,410	297	1,113	150,340	205.66	106.62	(1)	21	826	(199)	(457)	(44,758)
GRAHAM	253	474	142	332	54,869	216.87	115.76	0	5	(1,907)	(80)	(207)	(18,732)
GREENLEE	16	33	8	25	3,285	205.31	99.55	(4)	(10)	(914)	(27)	(63)	(6,339)
SANTA CRUZ	220	422	81	341	43,864	199.38	103.94	(6)	(17)	(1,190)	(43)	(149)	(10,120)

1/EXCLUDES: PRIOR MONTH NET TOTALS OF 1,287 CASES; 3,136 RECIPIENTS; \$217,250.
 GRANT DIVERSION TOTALS OF: 1,040 CASES;\$788,565.
 ZERO PAY TOTALS OF 1,984 CASES; 5,850 RECIPIENTS.
 TANF CHILD ONLY: 17,869 CASES; 29,747 RECIPIENTS; \$3,428,832.
 RRP: 635 CASES; 1,133 RECIPIENTS; \$137,594.

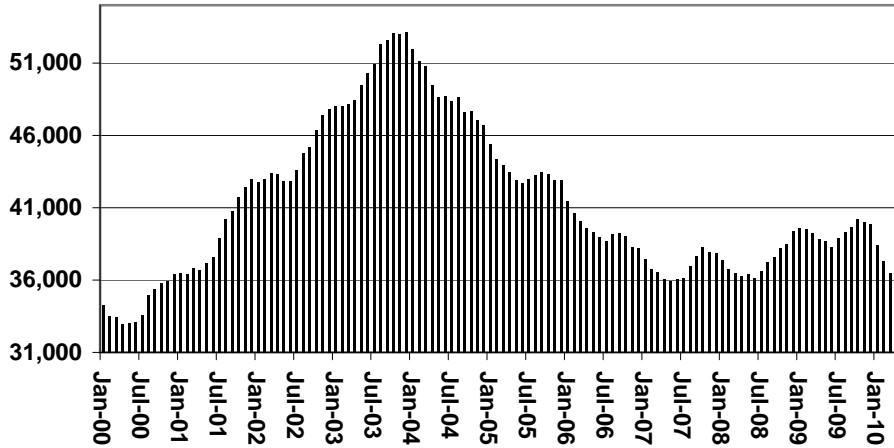
	CURRENT MO. CASES	CURRENT MO. RECIP.	CURRENT MO. DOLLARS	PRIOR MO. CASES	PRIOR MO. RECIP.	PRIOR MO. DOLLARS
PASQUAYAOUI	314	885	\$93,016	18	56	\$8,095
WM APACHE	791	2,297	\$250,384	10	35	\$1,407
SALT RIVER	86	280	\$24,856	4	15	\$415
SAN CARLOS	560	1,226	\$144,601	9	21	\$2,776
HOPI	131	381	\$29,766	4	11	\$220
TOTAL	1,882	5,069	\$542,623	45	138	\$12,913

TANF SUMMARY

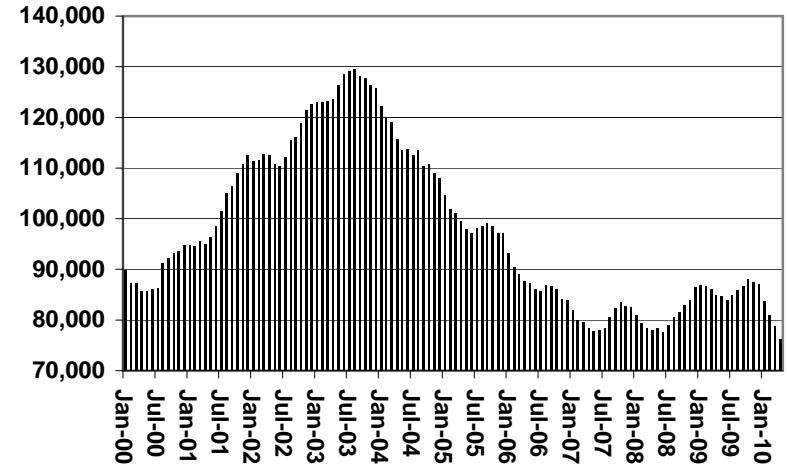
TABLES 1, 1A, 1B, & 1C

COMPARISON OF CASES, RECIPIENTS, PAYMENTS & AVERAGE PAYMENTS
FOR 2000, 2001, 2002, 2003, 2004, 2005, 2006, 2007, 2008, 2009, & 2010

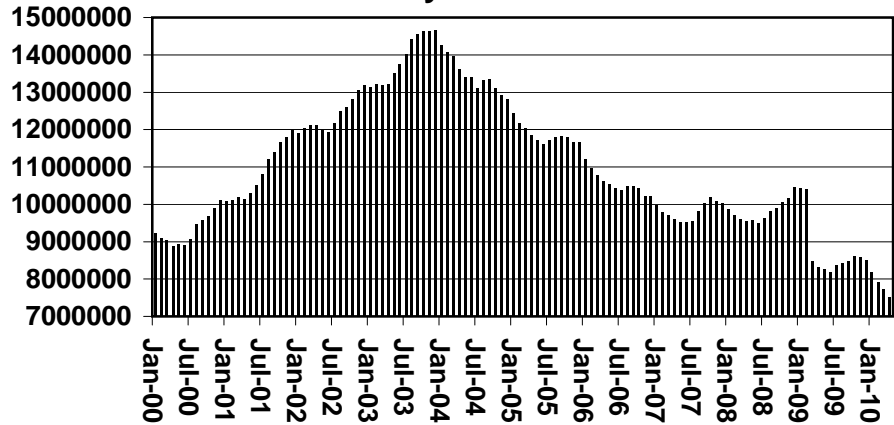
Cases



Recipients



Payments



Average Payments Per Recipient

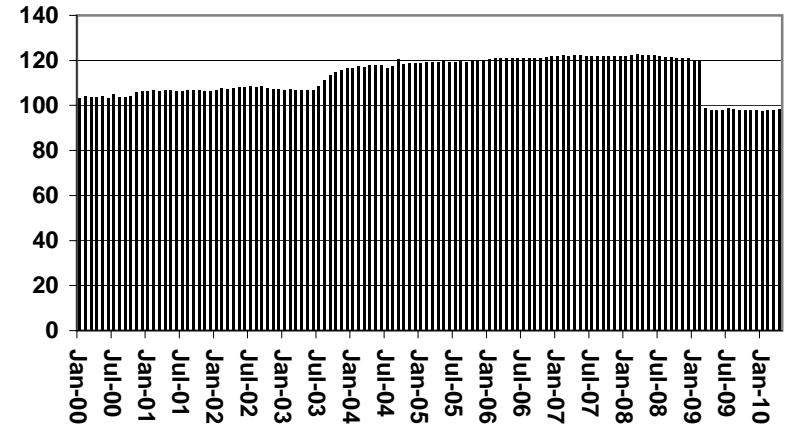


TABLE 1
CASH ASSISTANCE: ARIZONA 1/

	APRIL 2010							CHANGE FROM					
								MARCH 2010			APRIL 2009		
	FAMILIES (CASES)	(RECIP.)	ADULTS	CHILDREN	TOTAL PAYMENTS	AVERAGE PAYMENT/ CASE	AVERAGE PAYMENT/ RECIP.	FAMILIES (CASES)	PERSONS (RECIP.)	TOTAL PAYMENTS	FAMILIES (CASES)	PERSONS (RECIP.)	TOTAL PAYMENTS
ARIZONA	33,670	71,344	16,827	54,517	7,200,248	213.85	100.92	(844)	(1,999)	(182,170)	(2,678)	(6,362)	(625,449)
DISTRICT I													
MARICOPA	20,614	44,453	10,136	34,317	4,382,819	212.61	98.59	(557)	(1,286)	(113,835)	(944)	(2,543)	(242,022)
DISTRICT II													
PIMA	5,423	10,648	2,567	8,081	1,121,839	206.87	105.36	(112)	(300)	(26,177)	(765)	(1,739)	(174,919)
DISTRICT III													
APACHE	2	5	2	3	396	198.00	79.20	1	2	257	(4)	(9)	(1,043)
COCONINO	189	403	82	321	39,280	207.83	97.47	(2)	0	154	(36)	(51)	(5,375)
NAVAJO	1,448	3,748	1,156	2,592	397,533	274.54	106.07	(1)	(5)	(1,457)	80	343	30,552
YAVAPAI	564	1,032	198	834	110,427	195.79	107.00	(31)	(99)	(7,733)	(135)	(305)	(28,956)
DISTRICT IV													
LA PAZ	153	320	89	231	30,991	202.56	96.85	0	5	250	(15)	(27)	(3,683)
MOHAVE	1,032	2,029	520	1,509	210,156	203.64	103.58	(26)	(77)	(7,859)	(176)	(456)	(42,666)
YUMA	820	1,724	315	1,409	172,993	210.97	100.34	(3)	(2)	937	(105)	(207)	(20,180)
DISTRICT V													
GILA	667	1,404	498	906	161,513	242.15	115.04	(33)	(70)	(8,482)	(34)	(98)	(13,277)
PINAL	1,573	3,307	759	2,548	323,701	205.79	97.88	(72)	(173)	(16,127)	(239)	(553)	(54,572)
DISTRICT VI													
COCHISE	706	1,361	283	1,078	147,582	209.04	108.44	1	20	1,181	(178)	(380)	(38,401)
GRAHAM	248	466	138	328	54,271	218.83	116.46	0	6	(1,673)	(67)	(161)	(16,262)
GREENLEE	16	33	8	25	3,285	205.31	99.55	(3)	(6)	(579)	(26)	(59)	(6,004)
SANTA CRUZ	215	411	76	335	43,462	202.15	105.75	(6)	(14)	(1,027)	(34)	(117)	(8,641)
1/EXCLUDES: PRIOR MONTH NET TOTALS OF: 596 CASES; 1,527 RECIPIENTS; \$151,515. GRANT DIVERSION TOTALS OF: 1,040 CASES; ZERO PAY TOTALS OF 1,937 CASES; 5,639 RECIPIENTS.													
								CURRENT MO. CASES	CURRENT MO. RECIP.	CURRENT MO. DOLLARS	PRIOR MO. CASES	PRIOR MO. RECIP.	PRIOR MO. DOLLARS
PASQUAY/AQUI							301	836	\$88,572	16	50	\$7,724	
WM APACHE							791	2,297	\$250,384	10	35	\$1,407	
SALT RIVER							86	280	\$24,856	4	15	\$415	
SAN CARLOS							560	1,226	\$144,601	9	21	\$2,776	
HOPI							131	381	\$29,766	4	11	\$220	
CASES WITH GRANT UNDER \$100 (SEE TABLE 1B).							TOTAL	1,869	5,020	\$538,179	43	132	\$12,542

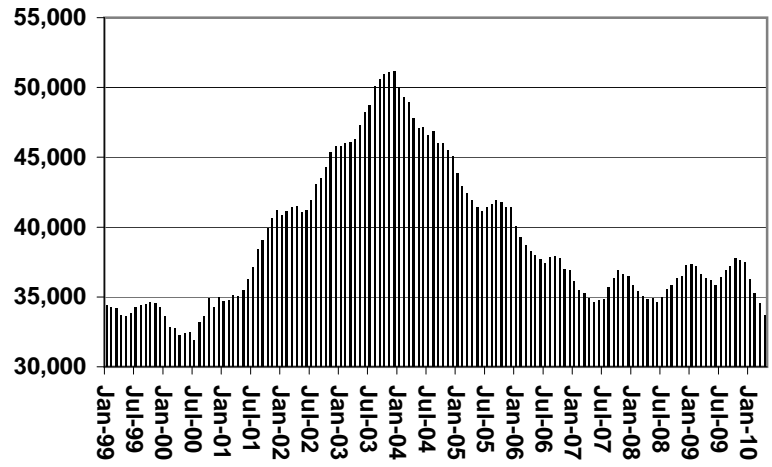
CHART 1

CASH ASSISTANCE PROGRAM

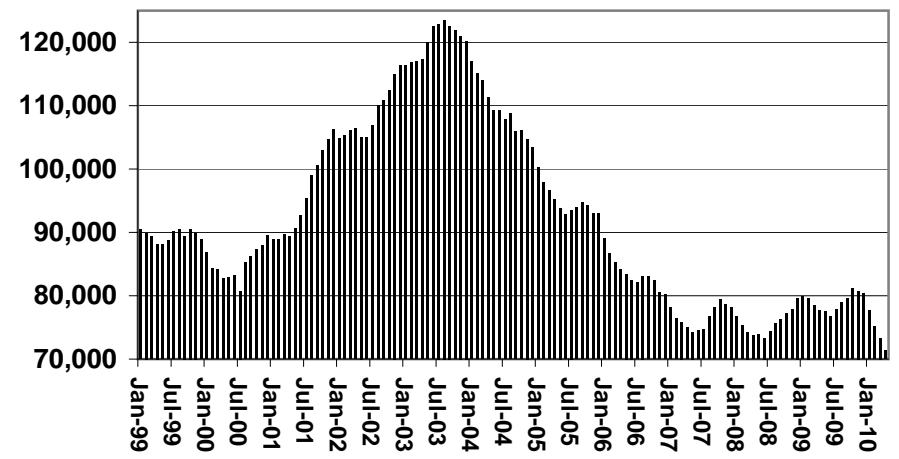
COMPARISON OF CASES, RECIPIENTS, PAYMENTS & AVERAGE PAYMENTS

FOR 1999, 2000, 2001, 2002, 2003, 2004, 2005, 2006, 2007, 2008, 2009, & 2010

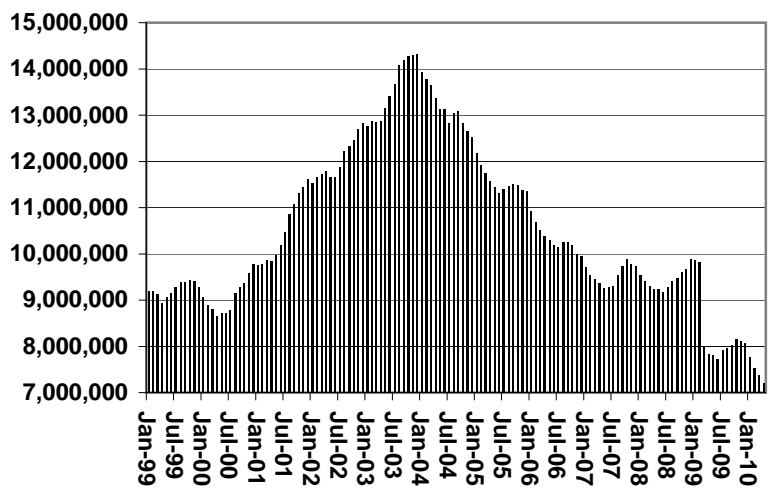
Cases



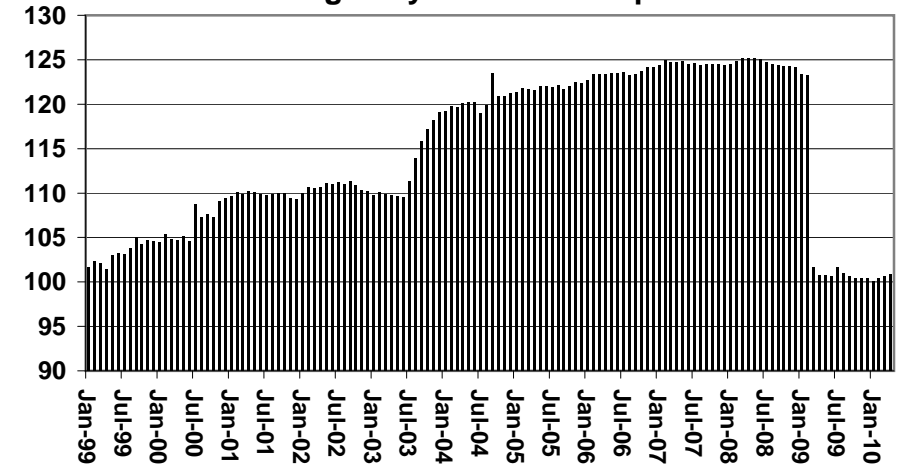
Recipients



Payments



Average Payment Per Recipient



**TABLE 1A
CA-UP**

CASH ASSISTANCE UNEMPLOYED PARENT PROGRAM: ARIZONA 1/

	APRIL 2010							CHANGE FROM			APRIL 2009		
	FAMILIES (CASES)	PERSONS (RECIP.)	ADULTS	CHILDREN	TOTAL PAYMENTS	AVERAGE PAYMENT/ CASE	AVERAGE PAYMENT/ RECIP.	FAMILIES (CASES)	PERSONS (RECIP.)	TOTAL PAYMENTS	FAMILIES (CASES)	PERSONS (RECIP.)	TOTAL PAYMENTS
ARIZONA	863	3,043	1,181	1,862	240,856	279.09	79.15	(159)	(535)	(42,378)	(588)	(2,046)	(184,747)
DISTRICT I													
MARICOPA	619	2,173	774	1,399	173,186	279.78	79.70	(115)	(350)	(27,711)	(278)	(830)	(84,410)
DISTRICT II													
PIMA	145	510	243	267	40,847	281.70	80.09	(15)	(76)	(6,045)	(117)	(471)	(39,936)
DISTRICT III													
APACHE	0	0	0	0	0	0.00	0.00	0	0	0	0	0	0
COCONINO	1	2	2	0	220	220.00	110.00	1	2	220	(6)	(24)	(2,082)
NAVAJO	6	23	12	11	1,699	283.17	73.87	(9)	(35)	(3,040)	(38)	(144)	(12,497)
YAVAPAI	8	23	6	17	1,907	238.38	82.91	0	2	41	(19)	(72)	(4,845)
DISTRICT IV													
LA PAZ	2	6	4	2	453	226.50	75.50	1	3	278	(1)	(7)	(499)
MOHAVE	15	57	29	28	3,961	264.07	69.49	(7)	(28)	(2,471)	(25)	(99)	(8,684)
YUMA	17	64	28	36	5,032	296.00	78.63	2	7	758	(2)	(4)	(765)
DISTRICT V													
GILA	44	166	75	91	12,054	273.95	72.61	(13)	(49)	(3,389)	(67)	(277)	(21,016)
PINAL	5	18	9	9	1,495	299.00	83.06	1	2	332	1	3	446
DISTRICT VI													
COCHISE	39	148	66	82	10,559	270.74	71.34	(14)	(51)	(3,721)	(68)	(280)	(21,462)
SANTA CRUZ	6	19	8	11	1,497	249.50	78.79	(4)	(11)	(1,019)	(35)	(118)	(10,013)
COCHISE	4	12	4	8	1,008	252.00	84.00	(2)	(4)	(406)	(22)	(73)	(6,395)
GRAHAM	1	3	2	1	278	278.00	92.67	(1)	(3)	(278)	(8)	(25)	(2,144)
GREENLEE	0	0	0	0	0	0.00	0.00	(1)	(4)	(335)	(1)	(4)	(335)
SANTA CRUZ	1	4	2	2	211	211.00	52.75	0	0	0	(4)	(16)	(1,139)

1/EXCLUDES: PRIOR MONTH NET TOTALS OF: 87 CASES; 326 RECIPIENTS; \$30,113.
GRANT DIVERSION TOTALS OF: 0 CASES; \$0.
ZERO PAY TOTALS OF 47 CASES; 211 RECIPIENTS.

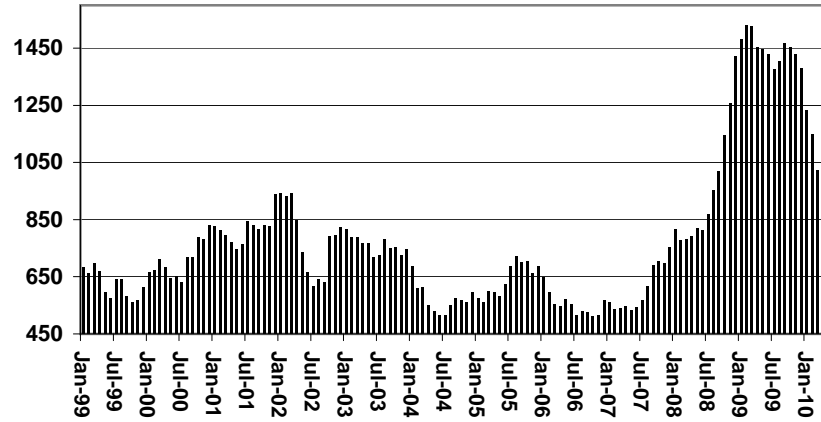
	CURRENT MO. CASES	CURRENT MO. RECIP.	CURRENT MO. DOLLARS	PRIOR MO. CASES	PRIOR MO. RECIP	PRIOR MO. DOLLARS
PASQUA/YAQUI	13	49	\$4,444	2	6	\$371
WM APACHE	0	0	\$0	0	0	\$0
SALT RIVER	0	0	\$0	0	0	\$0
SAN CARLOS	0	0	\$0	0	0	\$0
HOPI	0	0	\$0	0	0	\$0
TOTAL	13	49	\$4,444	2	6	\$371

CASES WITH GRANT UNDER \$100 (SEE TABLE 1C).

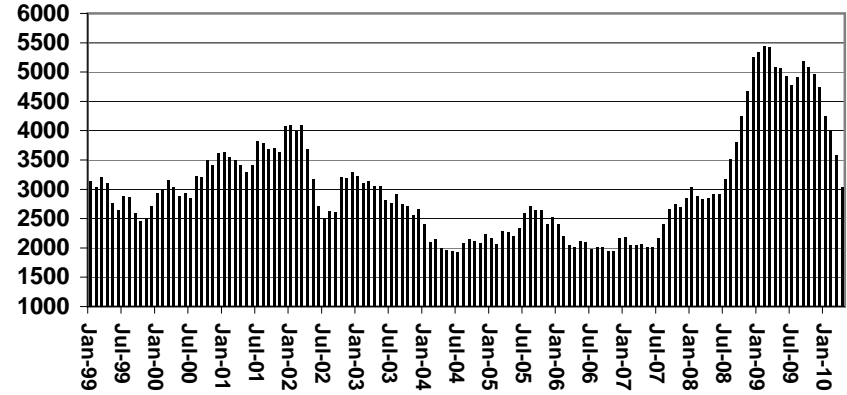
CHART 1A

CASH ASSISTANCE UNEMPLOYED PARENT PROGRAM COMPARISON OF CASES, RECIPIENTS, PAYMENTS & AVERAGE PAYMENTS FOR 1999, 2000, 2001, 2002, 2003, 2004, 2005, 2006, 2007, 2008, 2009, & 2010

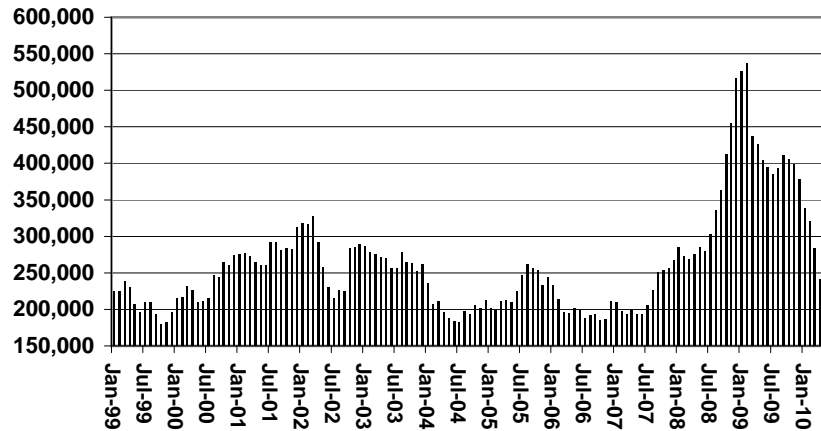
Cases



Recipients



Payments



Average Payment Per Recipient

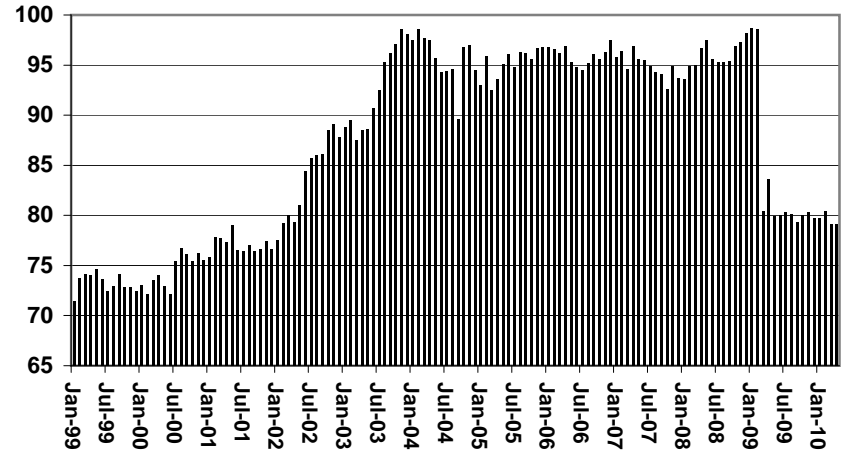


TABLE 1B 1/

CASH ASSISTANCE: ARIZONA
 CASES WITH GRANT UNDER \$100

	APRIL 2010							CHANGE FROM					
								MARCH 2010			APRIL 2009		
	FAMILIES (CASES)	PERSONS (RECIP.)	ADULTS	CHILDREN	TOTAL PAYMENTS	AVERAGE PAYMENT/ CASE	AVERAGE PAYMENT/ RECIP.	FAMILIES (CASES)	PERSONS (RECIP.)	TOTAL PAYMENTS	FAMILIES (CASES)	PERSONS (RECIP.)	TOTAL PAYMENTS
ARIZONA	895	1,802	441	1,361	60,045	67.09	33.32	(39)	(31)	(3,658)	(63)	(121)	(3,878)
DISTRICT I													
MARICOPA	582	1,202	278	924	39,309	67.54	32.70	(10)	9	(436)	(9)	2	1,087
DISTRICT II													
PIMA	145	287	81	206	9,469	65.30	32.99	(8)	1	(841)	19	49	571
DISTRICT III													
APACHE	0	0	0	0	36	0.00	0.00	0	0	36	0	0	36
COCONINO	4	9	2	7	250	62.50	27.78	1	1	(27)	(3)	(10)	(205)
NAVAJO	13	24	5	19	772	59.38	32.17	(1)	(7)	4	(10)	(18)	(751)
YAVAPAI	25	52	14	38	1,477	59.08	28.40	4	9	268	(11)	(22)	(944)
DISTRICT IV													
LA PAZ	10	15	4	11	703	70.30	46.87	(3)	(6)	(164)	2	3	26
MOHAVE	29	65	18	47	1,859	64.10	28.60	(10)	(18)	(1,125)	(20)	(22)	(1,205)
YUMA	13	27	8	19	1,065	81.92	39.44	(3)	(3)	(183)	(11)	(24)	(887)
DISTRICT V													
GILA	8	11	1	10	423	52.88	38.45	(5)	(8)	(291)	(2)	(2)	(102)
PINAL	37	61	15	46	2,421	65.43	39.69	(5)	(13)	(831)	(11)	(44)	(1,008)
DISTRICT VI													
COCHISE	21	37	10	27	1,750	83.33	47.30	0	5	51	2	0	134
GRAHAM	4	5	2	3	320	80.00	64.00	1	2	44	(4)	(17)	(290)
GREENLEE	0	0	0	0	0	0.00	0.00	0	0	0	0	0	0
SANTA CRUZ	4	7	3	4	191	47.75	27.29	0	(3)	(163)	(5)	(16)	(340)

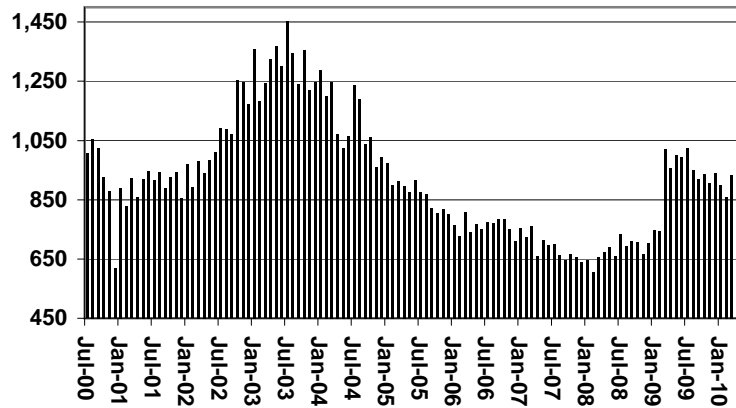
EXCLUDES: PRIOR MONTH NET TOTALS OF 568 CASES; 1,168 RECIPIENTS; \$33,651.

CHART 1B

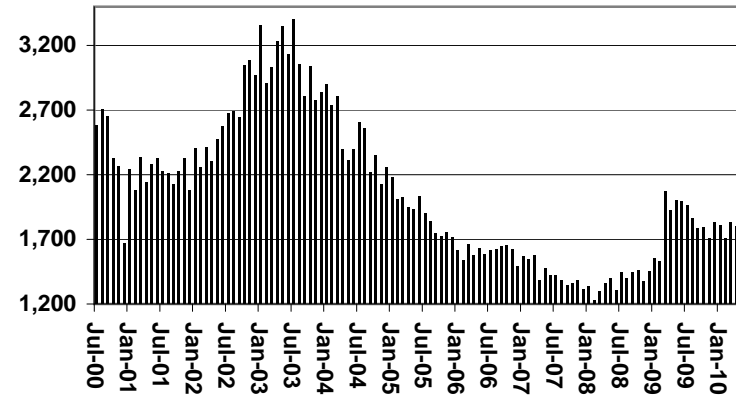
CASH ASSISTANCE PROGRAM CASES WITH GRANT UNDER \$100

FOR 1999, 2000, 2001, 2002, 2003, 2004, 2005, 2006, 2007, 2008, 2009, & 2010

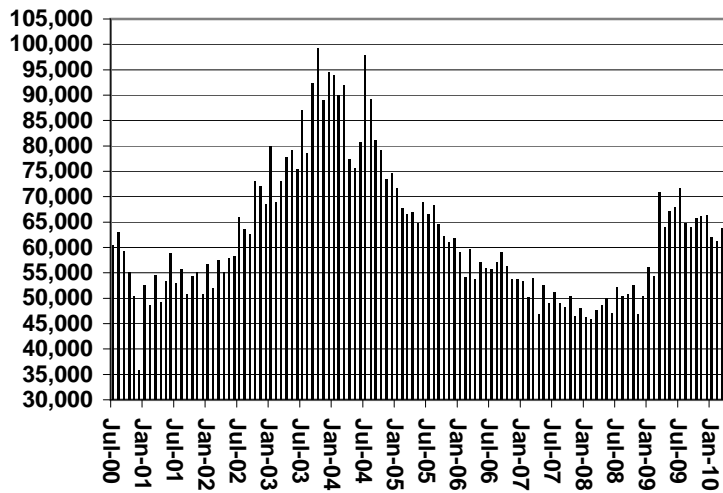
Cases



Recipients



Payments



Average Payment Per Recipient

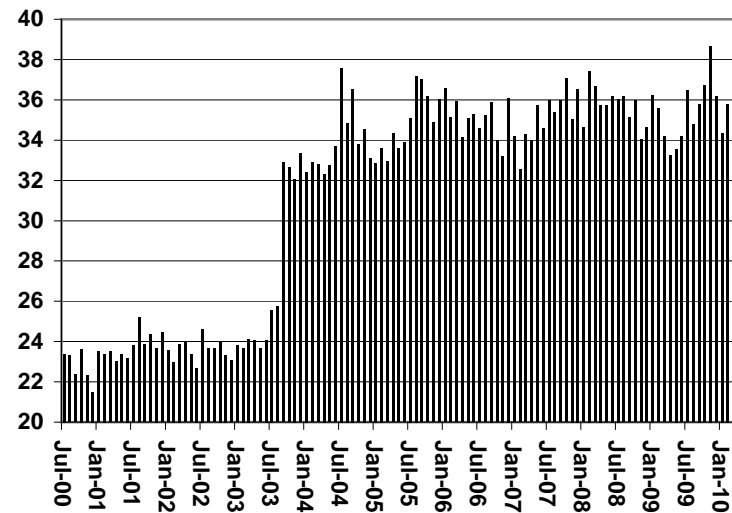


TABLE 1C 1/

CASH ASSISTANCE UNEMPLOYED PARENT PROGRAM: ARIZONA
 CASES WITH GRANT UNDER \$100

	CHANGE FROM												
	APRIL 2010							MARCH 2010			APRIL 2009		
	FAMILIES (CASES)	PERSONS (RECIP.)	ADULTS	CHILDREN	TOTAL PAYMENTS	AVERAGE PAYMENT/ CASE	AVERAGE PAYMENT/ RECIP.	FAMILIES (CASES)	PERSONS (RECIP.)	TOTAL PAYMENTS	FAMILIES (CASES)	PERSONS (RECIP.)	TOTAL PAYMENTS
ARIZONA	23	69	20	49	1,038	45.13	15.04	(6)	(9)	(550)	(23)	(67)	(1,642)
DISTRICT I													
MARICOPA	20	54	14	40	900	45.00	16.67	(9)	(24)	(688)	(16)	(49)	(1,180)
DISTRICT II													
PIMA	1	4	2	2	36	36.00	9.00	1	4	36	(5)	(17)	(319)
DISTRICT III													
APACHE	0	0	0	0	0	0.00	0.00	0	0	0	0	0	0
COCONINO	0	0	0	0	0	0.00	0.00	0	0	0	0	0	0
NAVAJO	0	0	0	0	0	0.00	0.00	0	0	0	0	0	0
YAVAPAI	0	0	0	0	0	0.00	0.00	0	0	0	0	0	0
DISTRICT IV													
LA PAZ	0	0	0	0	0	0.00	0.00	0	0	0	(1)	(3)	(88)
MOHAVE	0	0	0	0	0	0.00	0.00	0	0	0	0	0	0
YUMA	0	0	0	0	0	0.00	0.00	0	0	0	(1)	(3)	(88)
DISTRICT V													
GILA	2	11	4	7	102	51.00	9.27	2	11	102	1	10	77
PINAL	0	0	0	0	0	0.00	0.00	0	0	0	0	0	0
DISTRICT VI													
COCHISE	2	11	4	7	102	51.00	9.27	2	11	102	(2)	(8)	(132)
GRAHAM	0	0	0	0	0	0.00	0.00	0	0	0	(1)	(4)	(96)
GREENLEE	0	0	0	0	0	0.00	0.00	0	0	0	(1)	(4)	(36)
SANTA CRUZ	0	0	0	0	0	0.00	0.00	0	0	0	0	0	0

EXCLUDES: PRIOR MONTH NET TOTALS OF 36 CASES; 115 RECIPIENTS; \$1,971.

CHART 1C

CASH ASSISTANCE UNEMPLOYED PARENT PROGRAM

CASES WITH GRANT UNDER \$100

FOR 1999, 2000, 2001, 2002, 2003, 2004, 2005, 2006, 2007, 2008, 2009, & 2010

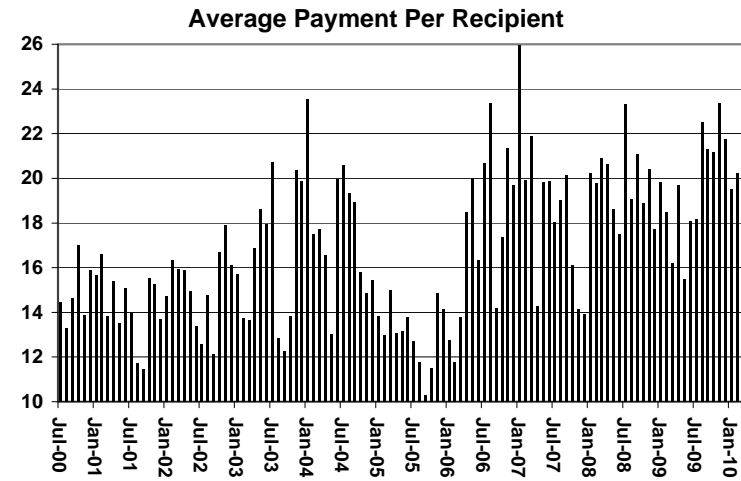
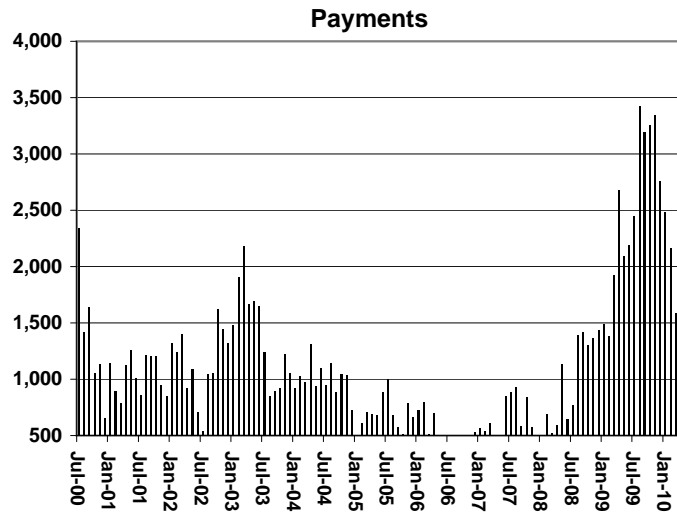
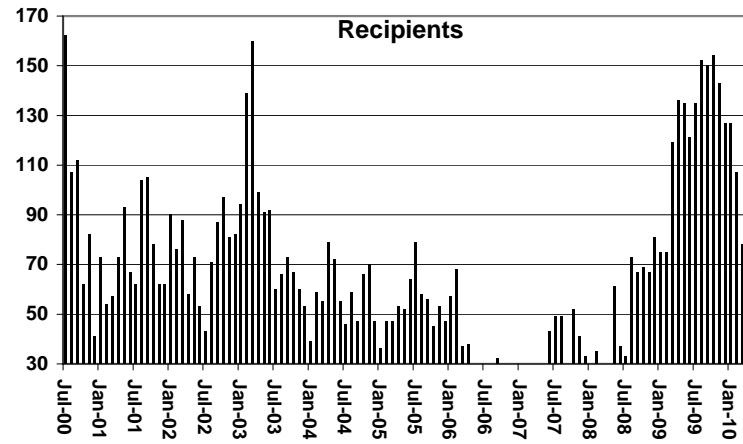
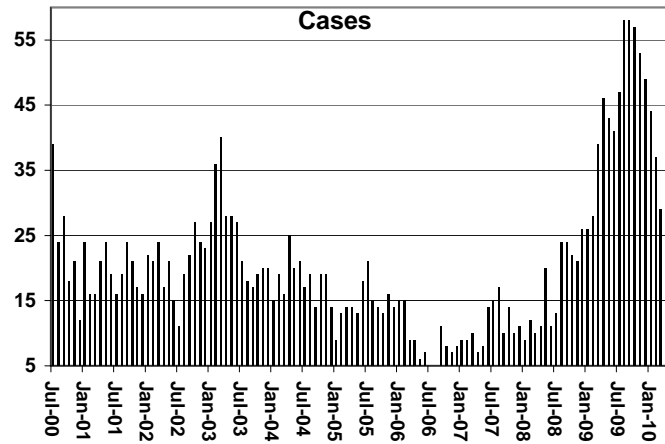


TABLE 4

TUBERCULOSIS CONTROL: ARIZONA 1/

	APRIL 2010						CHANGE FROM					
							MARCH 2010			APRIL 2009		
	NUMBER OF CASES	PERSONS (RECIP.)	TOTAL PAYMENTS	AVERAGE PAYMENT/ CASE	AVERAGE PAYMENT/ RECIP.		NUMBER OF CASES	PERSONS (RECIP.)	TOTAL PAYMENTS	NUMBER OF CASES	PERSONS (RECIP.)	TOTAL PAYMENTS
ARIZONA	1	1	173	173.00	173.00		0	0	0	(2)	(2)	(281)
DISTRICT I												
MARICOPA	1	1	173	173.00	173.00		0	0	0	(1)	(1)	(108)
DISTRICT II												
PIMA	0	0	0	0.00	0.00		0	0	0	0	0	0
DISTRICT III												
APACHE	0	0	0	0.00	0.00		0	0	0	0	0	0
COCONINO	0	0	0	0.00	0.00		0	0	0	0	0	0
NAVAJO	0	0	0	0.00	0.00		0	0	0	0	0	0
YAVAPAI	0	0	0	0.00	0.00		0	0	0	0	0	0
DISTRICT IV												
LA PAZ	0	0	0	0.00	0.00		0	0	0	0	0	0
MOHAVE	0	0	0	0.00	0.00		0	0	0	0	0	0
YUMA	0	0	0	0.00	0.00		0	0	0	(1)	(1)	(173)
DISTRICT V												
GILA	0	0	0	0.00	0.00		0	0	0	0	0	0
PINAL	0	0	0	0.00	0.00		0	0	0	0	0	0
DISTRICT VI												
COCHISE	0	0	0	0.00	0.00		0	0	0	0	0	0
GRAHAM	0	0	0	0.00	0.00		0	0	0	0	0	0
GREENLEE	0	0	0	0.00	0.00		0	0	0	0	0	0
SANTA CRUZ	0	0	0	0.00	0.00		0	0	0	0	0	0

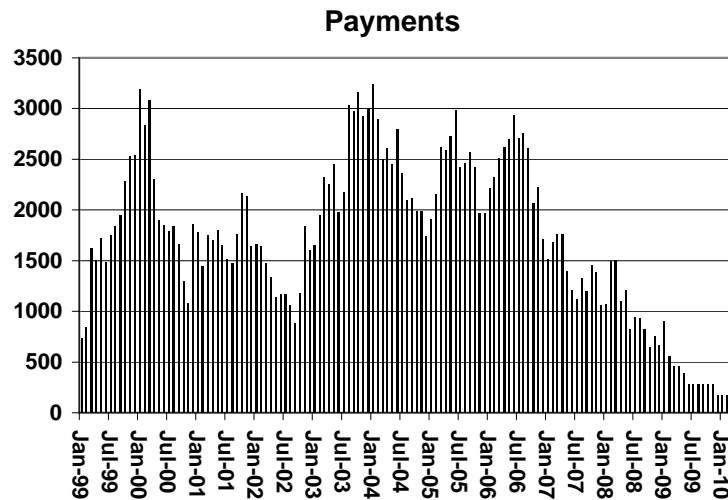
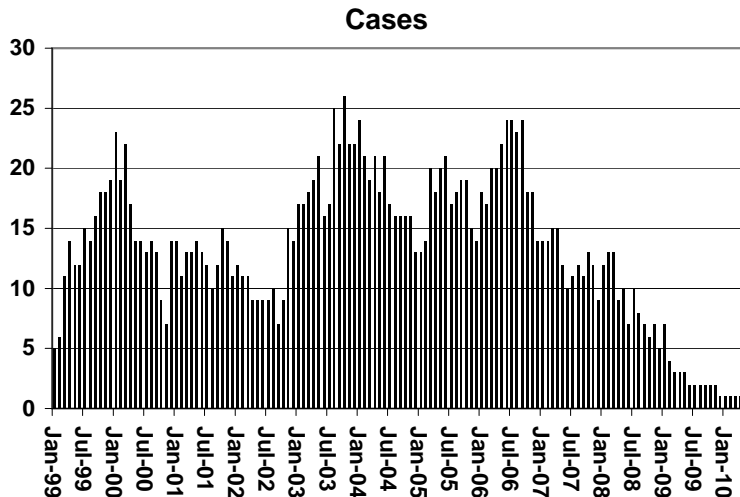
1/EXCLUDES: PRIOR MONTH NET TOTALS OF : 0 CASES; 0 RECIPIENTS; \$0.

CHART 4

TUBERCULOSIS CONTROL PROGRAM

COMPARISON OF CASES, PAYMENTS & AVERAGE PAYMENTS

FOR 1999, 2000, 2001, 2002, 2003, 2004, 2005, 2006, 2007, 2008, 2009, & 2010



Average Payment Per Case

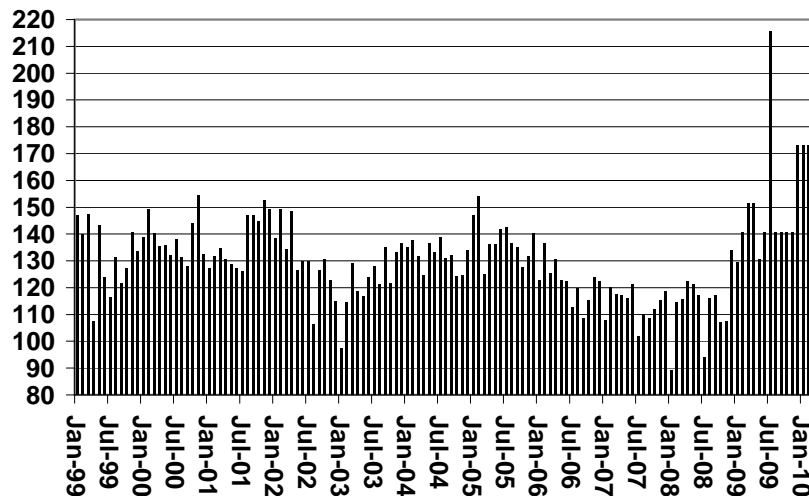


TABLE 6

SUPPLEMENTAL NUTRITION ASSISTANCE PROGRAM: ARIZONA 1/

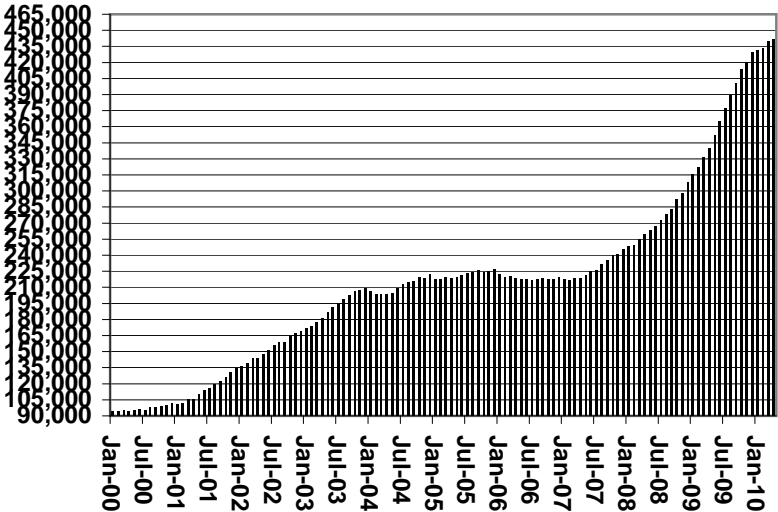
	CHANGE FROM												
	APRIL 2010							MARCH 2010			APRIL 2009		
	HOUSEHOLDS	PERSONS	ADULTS	CHILDREN	TOTAL COUPON ISSUANCE	AVERAGE ALLOT./ HOUSEHOLD	AVERAGE ALLOT./ PERSON	HOUSEHOLDS	PERSONS	TOTAL COUPON ISSUANCE	HOUSEHOLDS	PERSONS	TOTAL COUPON ISSUANCE
ARIZONA	441,537	1,020,648	517,103	503,545	129,131,124	292.46	126.52	2,209	3,548	317,441	101,656	208,289	21,223,837
DISTRICT I													
MARICOPA	242,158	560,629	265,588	295,041	70,791,609	292.34	126.27	1,447	2,440	(348,509)	63,623	132,150	12,781,758
DISTRICT II													
PIMA	75,192	161,712	88,895	72,817	20,906,632	278.04	129.28	511	770	125,989	16,814	31,334	3,494,316
DISTRICT III													
APACHE	9,528	27,286	14,514	12,772	2,618,324	274.80	95.96	33	0	(712,533)	3,375	8,266	243,697
COCONINO	9,317	23,239	12,293	10,946	3,178,643	341.17	136.78	56	115	286,793	1,850	2,356	529,721
NAVAJO	12,418	33,110	17,801	15,309	4,947,122	398.38	149.41	20	22	855,379	(459)	(1,934)	527,442
YAVAPAI	13,902	28,461	16,781	11,680	3,521,704	253.32	123.74	25	93	(7,275)	3,151	6,242	580,163
DISTRICT IV													
LA PAZ	1,912	3,909	2,280	1,629	504,544	263.88	129.07	29	35	3,703	287	504	45,239
MOHAVE	19,337	41,449	24,601	16,848	4,791,668	247.80	115.60	(1)	34	(441,270)	3,950	9,664	542,508
YUMA	14,118	36,837	18,586	18,251	4,297,720	304.41	116.67	48	95	52,426	2,370	5,698	577,762
DISTRICT V													
GILA	5,641	12,339	7,252	5,087	1,740,568	308.56	141.06	30	(2)	134,894	1,147	2,128	375,308
PINAL	20,327	50,219	25,985	24,234	6,731,335	331.15	134.04	93	185	368,475	3,069	6,282	951,686
DISTRICT VI													
COCHISE	9,882	21,575	12,168	9,407	2,702,225	273.45	125.25	(7)	(30)	15,280	1,310	2,673	292,251
GRAHAM	3,226	7,698	4,236	3,462	906,162	280.89	117.71	(38)	(94)	(63,552)	591	1,300	77,731
GREENLEE	522	1,173	662	511	122,368	234.42	104.32	(4)	(43)	(22,958)	136	322	14,310
SANTA CRUZ	4,057	11,012	5,461	5,551	1,370,500	337.81	124.46	(33)	(72)	70,599	442	1,304	189,945

1/EXCLUDES: PRIOR MONTH NET TOTALS OF : 700 CASES; 1,999 RECIPIENTS; \$1,533,129.
 AGED CANCELATIONS: 6,695 CASES; 10,797 RECIPIENTS; 390,913.
 SNAP COUPON CONVERSIONS: 0 CASES; 0 RECIPIENTS; \$0.
 SNAP REINSTATED: 0 CASES; \$0.
 SNAP ZERO PAY: 13,573 CASES; 23,917 RECIPIENTS.
 SNAP CHILD ONLY: 40,566 CASES; 95,953 RECIPIENTS; \$12,475,999.

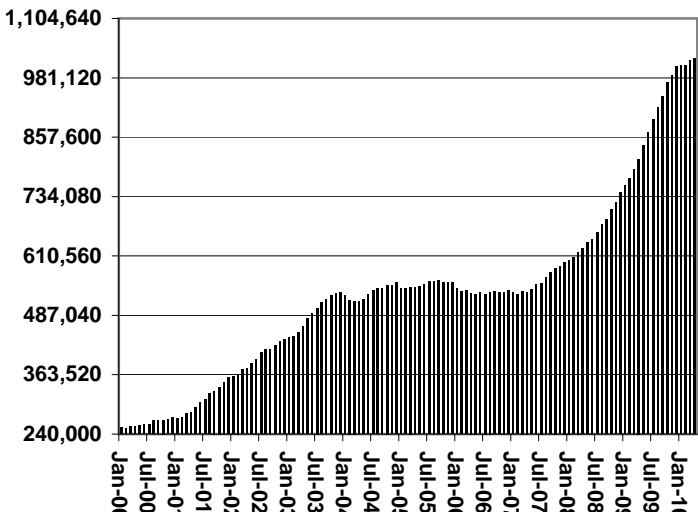
CHART 6

SUPPLEMENTAL NUTRITION ASSISTANCE PROGRAM (SNAP) COMPARISON OF HOUSEHOLDS, RECIPIENTS, PAYMENTS & AVERAGE PAYMENTS FOR 1999, 2000, 2001, 2002, 2003, 2004, 2005, 2006, 2007, 2008, 2009, & 2010

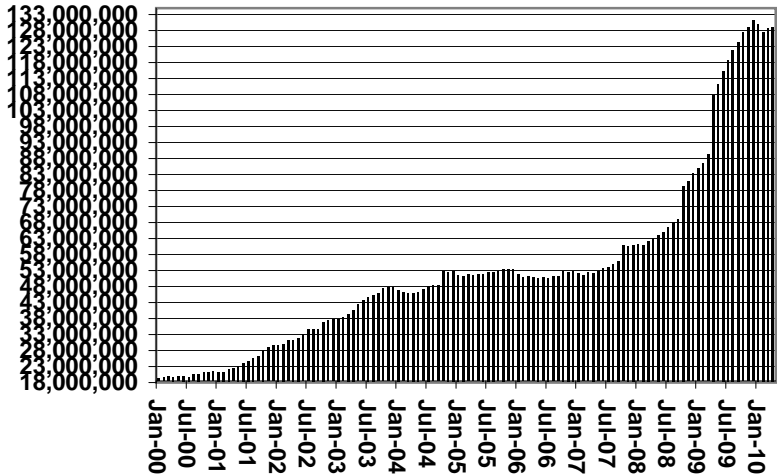
Households



Recipients



Payments



Average Payment Per Household

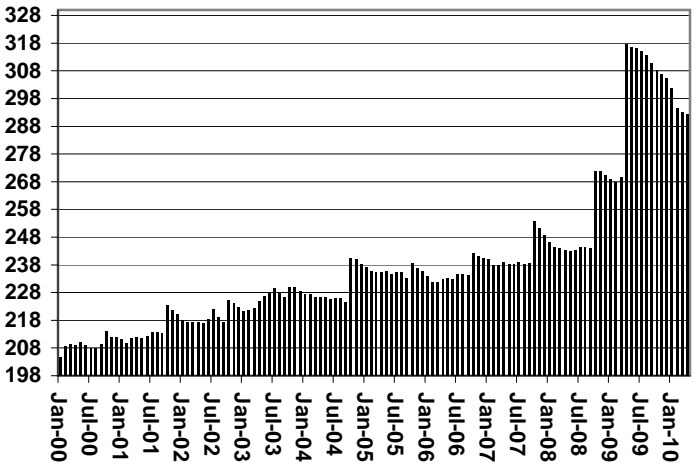


TABLE 7A
MEDICAL ASSISTANCE PROGRAM

RECIPIENTS

APRIL 2010

	SOBRA WOMAN 133% FPL	SOBRA CHILD	ADULT W/O CHILD 100% FPL	FOSTER CARE	1931 36% FPL	FEDERAL EMERGENCY SERVICES	INFANTS	ADULT W/O CHILD 40% FPL	MEDICAL W/SPEND DOWN	SOBRA WOMAN 100% FPL	SOBRA CHILD 100% FPL	TRANSITIONAL MEDICAL T1 - T4	1931 100% FPL	YATI	OTHER	TOTAL CASES
ARIZONA	10,191	65,116	60,820	11,940	327,352	66,487	49,512	159,549	6,890	3,973	229,696	45,853	121,623	344	26,885	1,186,231
DISTRICT I																
MARICOPA	5,534	36,662	29,477	6,188	183,568	52,344	29,780	81,006	3,713	2,005	134,961	23,295	62,807	211	13,853	665,404
DISTRICT II																
PIMA	1,473	9,865	11,237	3,289	47,929	6,820	6,785	28,098	852	636	33,064	6,856	19,915	79	4,527	181,425
DISTRICT III																
APACHE	203	1,450	1,044	42	10,802	112	987	5,428	153	96	4,695	853	3,053	1	372	29,291
COCONINO	303	1,372	1,606	128	8,340	399	1,121	4,643	134	123	4,988	1,110	3,061	10	395	27,733
NAVAJO	314	2,255	1,876	149	12,140	351	1,391	6,603	181	136	5,957	1,435	4,060	5	565	37,418
YAVAPAI	393	1,770	2,730	438	7,304	1,418	1,297	4,981	329	124	6,248	1,525	4,081	13	1,187	33,838
DISTRICT IV																
LA PAZ	32	220	274	17	1,234	147	147	790	24	14	725	190	425	0	146	4,385
MOHAVE	388	2,200	3,080	315	11,403	698	1,551	7,530	513	186	8,439	1,811	5,280	3	1,527	44,924
YUMA	538	2,376	2,729	303	10,483	1,490	1,930	4,461	300	222	9,449	4,207	5,889	5	1,221	45,603
DISTRICT V																
GILA	123	674	818	101	4,292	137	526	2,556	114	49	1,987	434	1,370	1	337	13,519
PINAL	510	4,008	2,818	613	17,036	1,427	2,199	7,841	330	197	10,099	2,087	5,835	11	1,302	56,313
DISTRICT VI																
COCHISE	189	1,182	1,724	247	6,735	528	890	3,112	135	82	4,207	984	2,764	2	831	23,612
GRAHAM	87	478	487	73	2,479	53	381	1,300	54	42	1,536	340	1,026	1	146	8,483
GREENLEE	9	55	73	8	395	8	60	176	10	4	276	65	181	1	33	1,354
SANTA CRUZ	95	549	847	29	3,212	555	467	1,024	48	57	3,065	661	1,876	1	443	12,929

TABLE 7B
MEDICAL ASSISTANCE PROGRAM
RECIPIENTS

CHANGE FROM
MARCH 2010

	SOBRA WOMAN 133% FPL	SOBRA CHILD	ADULT W/O CHILD 100% FPL	FOSTER CARE	1931 36% FPL	FEDERAL EMERGENCY SERVICES	INFANTS	ADULT W/O CHILD 40% FPL	MEDICAL W/SPEND DOWN	SOBRA WOMAN 100% FPL	SOBRA CHILD 100% FPL	TRANSITIONAL MEDICAL T1 - T4	1931 100% FPL	YATI	OTHER	TOTAL CASES
ARIZONA	(66)	(394)	417	17	(1,797)	(3,846)	(596)	711	38	(17)	1,144	1,057	903	7	(18)	(2,440)
DISTRICT I																
MARICOPA	(3)	(340)	382	(16)	(1,163)	(2,872)	(345)	448	13	(59)	992	732	706	(1)	(27)	(1,553)
DISTRICT II																
PIMA	(33)	(17)	87	11	(103)	(626)	(63)	241	4	16	154	201	217	7	6	102
DISTRICT III																
APACHE	(5)	29	4	(1)	(18)	(8)	(17)	90	12	4	(102)	68	(68)	0	4	(8)
COCONINO	0	(14)	(29)	(2)	143	(46)	(11)	(1)	(2)	(7)	(71)	104	(53)	0	3	14
NAVAJO	0	(2)	5	4	(103)	1	(28)	28	(31)	(1)	3	71	(50)	(1)	(3)	(107)
YAVAPAI	(3)	25	4	(4)	(97)	(46)	(44)	(81)	19	(5)	46	51	39	1	(16)	(111)
DISTRICT IV																
LA PAZ	0	(6)	1	(1)	4	(12)	3	21	(6)	(7)	19	(4)	8	0	(9)	11
MOHAVE	(19)	19	(43)	5	(151)	(51)	(9)	(39)	3	26	94	58	(17)	2	26	(96)
YUMA	15	(72)	41	4	(34)	(63)	(21)	15	4	7	(73)	(136)	(29)	1	(10)	(351)
DISTRICT V																
GILA	5	11	16	5	(36)	4	(10)	(18)	12	9	13	(27)	20	0	(1)	3
PINAL	(14)	(13)	(29)	8	(93)	(99)	(15)	18	16	3	88	(41)	102	(2)	4	(67)
DISTRICT VI																
COCHISE	3	(4)	(19)	2	(107)	(19)	(19)	(11)	(10)	(1)	15	34	37	(1)	(2)	(102)
GRAHAM	(7)	9	7	2	11	(1)	(10)	2	6	(2)	11	(65)	13	1	4	(19)
GREENLEE	0	1	(3)	0	(5)	1	2	(1)	(3)	1	(19)	1	(4)	0	1	(28)
SANTA CRUZ	(5)	(20)	(7)	0	(45)	(9)	(9)	(1)	1	(1)	(26)	10	(18)	0	2	(128)

TABLE 7C
MEDICAL ASSISTANCE PROGRAM
RECIPIENTS

CHANGE FROM

APRIL 2009

	SOBRA WOMAN 133% FPL	SOBRA CHILD	ADULT W/O CHILD 100% FPL	FOSTER CARE	1931 36% FPL	FEDERAL EMERGENCY SERVICES	INFANTS	ADULT W/O CHILD 40% FPL	MEDICAL W/SPEND DOWN	SOBRA WOMAN 100% FPL	SOBRA CHILD 100% FPL	TRANSITIONAL MEDICAL T1 - T4	3E 1931 100% FPL	YATI	OTHER	TOTAL CASES
ARIZONA	(919)	1,955	16,316	714	13,508	(21,877)	1,987	43,711	1,260	43	36,640	6,170	24,894	57	1,410	125,869
DISTRICT I																
MARICOPA	(199)	978	9,482	485	10,729	(16,661)	1,732	25,879	666	(12)	24,516	4,182	15,588	52	1,130	78,547
DISTRICT II																
PIMA	(263)	305	2,906	115	1,414	(3,700)	(10)	7,660	52	63	4,195	440	3,432	(2)	39	16,646
DISTRICT III																
APACHE	(5)	178	(39)	1	(99)	(1)	(2)	1,276	53	1	672	52	565	(1)	11	2,662
COCONINO	(24)	(26)	377	(10)	381	(159)	(8)	1,104	23	1	673	95	537	5	5	2,974
NAVAJO	(38)	(20)	345	16	(22)	(18)	16	1,260	(7)	(32)	657	230	518	2	(32)	2,875
YAVAPAI	(46)	(58)	640	(9)	140	(186)	33	1,005	52	(5)	1,217	303	829	1	91	4,007
DISTRICT IV																
LA PAZ	(4)	2	59	9	(1)	(35)	(11)	101	(5)	3	60	31	59	0	(14)	254
MOHAVE	(65)	73	681	47	318	(198)	22	1,297	106	5	1,076	71	735	1	119	4,288
YUMA	(51)	27	503	35	399	(319)	94	1,113	123	35	1,134	56	744	3	(74)	3,822
DISTRICT V																
GILA	(22)	9	211	20	57	(26)	22	341	32	(2)	60	125	113	1	17	958
PINAL	(56)	396	730	19	190	(371)	70	1,647	157	(4)	1,325	396	1,070	(5)	65	5,629
DISTRICT VI																
COCHISE	(55)	30	277	(8)	5	(149)	47	527	9	(8)	446	101	199	(3)	45	1,463
GRAHAM	(46)	19	38	(3)	(64)	(3)	(25)	230	3	4	224	41	171	1	(1)	589
GREENLEE	(15)	1	19	2	21	(3)	(1)	34	0	(3)	116	40	92	1	13	317
SANTA CRUZ	(30)	41	87	(5)	40	(48)	8	237	(4)	(3)	269	7	242	1	(4)	838

CHART 7

MEDICAL ASSISTANCE PROGRAM

COMPARISON OF RECIPIENTS

FOR 1999, 2000, 2001, 2002, 2003, 2004, 2005, 2006, 2007, 2008, 2009, & 2010

Total Recipients

