



DEPARTMENT OF ECONOMIC SECURITY

Your Partner For A Stronger Arizona

State of Arizona

Department of Economic Security

Family Assistance Administration

Statistical Bulletin

July, 2010

Phone: (602) 542-3678

<https://www.azdes.gov/appreports.aspx>

**** STATISTICAL BULLETIN ****
ARIZONA DEPARTMENT OF ECONOMIC SECURITY
FAMILY ASSISTANCE ADMINISTRATION
BOX 6123, PHOENIX, ARIZONA 85005
PHONE (602) 542-3678

JULY 2010

THIS ISSUE OF THE STATISTICAL BULLETIN COMPARES JULY 2010 DATA FOR EACH OF THE INDICATED PROGRAMS WITH THE INFORMATION FOR JUNE 2010 AND JULY 2009. STATEWIDE SUMMARIES OF ACTIVITY WITHIN EACH OF THE SPECIFIC PROGRAMS FOR THIS REPORT PERIOD ARE DISCUSSED BELOW. THE TABLES COMPARE CURRENT AND PRIOR MONTH DATA. DISTRICT AND COUNTY COMPARISONS ARE PROVIDED WITHIN THIS BULLETIN

TANF SUMMARY

COMPARING TO JUNE 2010, JULY 2010 CASES DECREASED BY 7,501 (22.72%) TO 25,512. RECIPIENTS DECREASED BY 13,671 (19.27%) TO 57,257. PAYMENTS DECREASED BY \$1,480,377 (21.24%) TO \$5,488,974. AVERAGE PAYMENT PER CASE INCREASED BY \$4.04 (1.91%) TO \$0.00. PAYMENT PER RECIPIENT DECREASED BY \$2.39 (2.43%) TO \$95.87.

COMPARING TO JULY 2009, JULY 2010 CASES DECREASED BY 13,363 (34.37%). RECIPIENTS DECREASED BY 27,566 (31.52%). TOTAL PAYMENTS DECREASED BY \$2,892,831 (34.51%). THE AVERAGE PAYMENT PER CASE DECREASED BY \$0.46 (0.21%). THE AVERAGE PAYMENT PER RECIPIENT DECREASED BY \$2.95 (2.99%).

CASH ASSISTANCE (CA)

COMPARING TO JUNE 2010, JULY 2010 CASES DECREASED BY 7,230 (23.02%) TO 24,179. RECIPIENTS DECREASED BY 13,136 (19.75%) TO 53,376. PAYMENTS DECREASED BY \$1,454,452 (21.69%) TO \$5,251,516. AVERAGE PAYMENT PER CASE INCREASED BY \$3.69 (1.73%) TO \$217.19. PAYMENT PER RECIPIENT DECREASED BY \$2.43 (2.41%) TO \$98.39.

COMPARING TO JULY 2009, JULY 2010 CASES DECREASED BY 12,252 (33.63%). RECIPIENTS DECREASED BY 24,563 (31.52%). TOTAL PAYMENTS DECREASED BY \$2,671,942 (33.72%). THE AVERAGE PAYMENT PER CASE DECREASED BY \$0.30 (0.14%). THE AVERAGE PAYMENT PER RECIPIENT DECREASED BY \$3.27 (3.22%).

CASH ASSISTANCE UNEMPLOYED PARENT PROGRAM (CA-UP)

COMPARING TO JUNE 2010, JULY 2010 CASES DECREASED BY 56 (7.56%) TO 685. RECIPIENTS DECREASED BY 151 (5.72%) TO 2,491. PAYMENTS DECREASED BY \$13,797 (6.71%) TO \$191,686. AVERAGE PAYMENT PER CASE INCREASED BY \$2.53 (0.91%) TO \$279.83. PAYMENT PER RECIPIENT DECREASED BY \$0.83 (1.06%) TO \$76.95.

COMPARING TO JULY 2009, JULY 2010 CASES DECREASED BY 690 (50.18%). RECIPIENTS DECREASED BY 2,292 (47.92%). TOTAL PAYMENTS DECREASED BY \$192,537 (50.11%). THE AVERAGE PAYMENT PER CASE INCREASED BY \$0.40 (0.14%). THE AVERAGE PAYMENT PER RECIPIENT DECREASED BY \$3.38 (4.21%).

CASH ASSISTANCE WITH GRANT UNDER \$100 (CA-MOE)

COMPARING TO JUNE 2010, JULY 2010 CASES DECREASED BY 214 (25.57%) TO 623. RECIPIENTS DECREASED BY 373 (22.14%) TO 1,312. PAYMENTS DECREASED BY \$11,950 (21.18%) TO \$44,461. AVERAGE PAYMENT PER CASE INCREASED BY \$3.97 (5.89%) TO \$71.37. AVERAGE PAYMENT PER RECIPIENT INCREASED BY \$0.41 (1.22%) TO \$33.89.

COMPARING TO JULY 2009, JULY 2010 CASES DECREASED BY 399 (39.04%). RECIPIENTS DECREASED BY 654 (33.27%). TOTAL PAYMENTS DECREASED BY \$27,211 (37.97%). THE AVERAGE PAYMENT PER CASE INCREASED BY \$1.24 (1.77%). THE AVERAGE PAYMENT PER RECIPIENT DECREASED BY \$2.57 (7.05%).

CASH ASSISTANCE UNEMPLOYED PARENT PROGRAM WITH GRANT UNDER \$100 (CA-UP-MOE) NEW PROGRAM STARTING 7/01

COMPARING TO JUNE 2010, JULY 2010 CASES DECREASED BY 1 (3.85%) TO 25. RECIPIENTS DECREASED BY 11 (12.36%) TO 78. PAYMENTS DECREASED BY \$178 (11.95%) TO \$1,311. AVERAGE PAYMENT PER CASE DECREASED BY \$4.83 (8.43%) TO \$52.44. PAYMENT PER RECIPIENT INCREASED BY \$0.08 (0.48%) TO \$16.81.

COMPARING TO JULY 2009, JULY 2010 CASES DECREASED BY 22 (46.81%). RECIPIENTS DECREASED BY 57 (3.83%). TOTAL PAYMENTS DECREASED BY \$1,141 (46.53%). THE AVERAGE PAYMENT PER CASE INCREASED BY \$0.27 (0.52%). THE AVERAGE PAYMENT PER RECIPIENT DECREASED BY \$1.35 (7.43%).

TUBERCULOSIS CONTROL PROGRAM (TC)

COMPARING TO JUNE 2010, JULY 2010 CASES INCREASED BY 0 (0.00%) TO 1. RECIPIENTS INCREASED BY 0 (0.00%) TO 1. PAYMENTS INCREASED BY \$0 (0.00%) TO \$173. AVERAGE PAYMENT PER CASE INCREASED BY \$42.15 (24.36%) TO \$215.15. AVERAGE PAYMENT PER RECIPIENT INCREASED BY \$0.00 (0.00%) TO \$173.00.

COMPARING TO JULY 2009, JULY 2010 CASES DECREASED BY 1 (50.00%). RECIPIENTS DECREASED BY 1 (50.00%). TOTAL PAYMENTS DECREASED BY \$108 (38.43%). THE AVERAGE PAYMENT PER CASE INCREASED BY \$74.65 (53.13%). THE AVERAGE PAYMENT PER RECIPIENT INCREASED BY \$32.50 (23.13%).

SUPPLEMENTAL NUTRITION ASSISTANCE PROGRAM (SNAP)

COMPARING TO JUNE 2010, JULY 2010 SUPPLEMENTAL NUTRITION ASSISTANCE HOUSEHOLDS INCREASED BY 4,048 (0.90%) TO 454,358. PERSONS RECEIVING SUPPLEMENTAL NUTRITION ASSISTANCE INCREASED BY 7,573 (0.73%) TO 1,044,940. TOTAL COUPON ISSUANCE INCREASED BY \$1,496,145 (1.13%) TO \$133,588,297. THE AVERAGE HOUSEHOLD ALLOTMENT INCREASED BY \$0.68 (0.23%) TO \$294.02. THE AVERAGE ALLOTMENT PER PERSON INCREASED BY \$0.51 (0.40%) TO \$127.84.

COMPARING TO JULY 2009, JULY 2010 SUPPLEMENTAL NUTRITION ASSISTANCE HOUSEHOLDS INCREASED BY 77,401 (20.53%). PERSONS RECEIVING SUPPLEMENTAL NUTRITION ASSISTANCE INCREASED BY 150,671 (16.85%). TOTAL COUPON ISSUANCE INCREASED BY \$14,750,314 (12.41%). THE AVERAGE ALLOTMENT PER HOUSEHOLD DECREASED BY \$21.24 (6.74%). THE AVERAGE ALLOTMENT PER PERSON DECREASED BY \$5.05 (3.80%).

MEDICAL ASSISTANCE PROGRAM (MA) NEW TABLE INCLUDES PROP. 204 CATEGORIES

COMPARING TO JANUARY 2010, FEBRUARY 2010 TOTAL RECIPIENTS TOTAL RECIPIENTS DECREASED BY 6,946 (0.59%). SOBRA WOMEN AT 140% FPL DECREASED BY 248 (2.41%). SOBRA CHILDREN DECREASED BY 812 (1.23%). ADULTS W/O CHILD AT 100% INCREASED BY 446 (0.76%). FOSTER CARE INCREASED BY 69 (0.59%). 1931 AT 36% FPL DECREASED BY 4,919 (1.48%). EMERGENCY SERVICES DECREASED BY 5,083 (6.43%). INFANTS DECREASED BY 513 (1.02%). ADULT W/O CHILD AT 140% INCREASED BY 510 (0.33%). MEDICAL W/SPEND DOWN DECREASED BY 201 (3.10%). SOBRA WOMAN AT 100% INCREASED BY 99 (2.63%). SOBRA CHILD AT 100% INCREASED BY 902 (0.40%). TRANSITIONAL MEDICAL INCREASED BY 1,305 (3.04%). 1931 AT 100% INCREASED BY 1,355 (1.16%). YATI INCREASED BY 10 (3.02%). ALL OTHER CATEGORIES INCREASED BY 134 (0.51%).

COMPARING TO JULY 2009, JULY 2010 TOTAL RECIPIENTS TOTAL RECIPIENTS INCREASED BY 66,540 (5.91%). SOBRA WOMEN AT 140% FPL DECREASED BY 430 (3.93%). SOBRA CHILDREN INCREASED BY 1,820 (2.76%). ADULTS W/O CHILD AT 100% INCREASED BY 11,664 (23.53%). FOSTER CARE INCREASED BY 499 (4.33%). 1931 AT 36% FPL INCREASED BY 6,541 (1.99%). EMERGENCY SERVICES DECREASED BY 31,856 (35.26%). INFANTS DECREASED BY 868 (1.76%). ADULT W/O CHILD AT 140% INCREASED BY 32,831 (24.62%). MEDICAL W/SPEND DOWN INCREASED BY 991 (15.66%). SOBRA WOMAN AT 100% DECREASED BY 1 (0.03%). SOBRA CHILD AT 100% INCREASED BY 19,366 (9.29%). TRANSITIONAL MEDICAL INCREASED BY 8,429 (23.88%). 1931 AT 100% INCREASED BY 14,861 (14.01%). YATI INCREASED BY 33 (11.00%). ALL OTHER CATEGORIES INCREASED BY 2,660 (10.71%).

TANF SUMMARY

TABLES 1, 1A, 1B, & 1C: ARIZONA 1

	JULY 2010							CHANGE FROM			JUNE 2010			JULY 2009		
	FAMILIES (CASES)	PERSONS (RECIP.)	ADULTS	CHILDREN	TOTAL PAYMENTS	AVERAGE	AVERAGE	FAMILIES (CASES)	PERSONS (RECIP.)	TOTAL PAYMENTS	FAMILIES (CASES)	PERSONS (RECIP.)	TOTAL PAYMENTS			
						PAYMENT/ CASE	PAYMENT/ RECIP.									
ARIZONA	25,512	57,257	15,479	41,778	5,488,974	215.15	95.87	(7,501)	(13,671)	(1,480,377)	(13,363)	(27,566)	(2,892,831)			
REGION																
MARICOPA	15,512	35,379	9,309	26,070	3,307,194	213.20	93.48	(5,017)	(9,490)	(1,001,160)	(7,778)	(16,199)	(1,676,083)			
NORTHERN	2,302	5,561	1,691	3,870	558,263	242.51	100.39	(314)	(486)	(63,725)	(644)	(1,299)	(142,853)			
APACHE	84	194	54	140	20,480	243.81	105.57	(9)	(8)	(1,379)	58	131	14,609			
COCONINO	117	249	53	196	24,188	206.74	97.14	(40)	(68)	(7,128)	(120)	(260)	(24,617)			
MOHAVE	810	1,677	459	1,218	168,116	207.55	100.25	(209)	(343)	(38,459)	(434)	(894)	(87,883)			
NAVAJO	1,291	3,441	1,125	2,316	345,479	267.61	100.40	(56)	(67)	(16,759)	(148)	(276)	(44,962)			
CENTRAL	2,891	6,230	1,673	4,557	617,276	213.52	99.08	(686)	(1,189)	(128,757)	(1,646)	(3,499)	(354,681)			
GILA	609	1,318	477	841	149,827	246.02	113.68	(19)	(16)	(1,993)	(78)	(157)	(21,830)			
LA PAZ	115	254	65	189	22,326	194.14	87.90	(38)	(60)	(6,156)	(66)	(143)	(13,884)			
PINAL	1,155	2,515	652	1,863	235,864	204.21	93.78	(300)	(554)	(59,956)	(806)	(1,836)	(176,948)			
YAVAPAI	404	777	170	607	80,115	198.30	103.11	(120)	(194)	(19,778)	(305)	(587)	(58,964)			
YUMA	608	1,366	309	1,057	129,144	212.41	94.54	(209)	(365)	(40,874)	(391)	(776)	(83,055)			
SOUTHERN	4,807	10,087	2,806	7,281	1,006,241	209.33	99.76	(1,484)	(2,506)	(286,735)	(3,295)	(6,569)	(719,214)			
COCHISE	433	851	199	652	89,237	206.09	104.86	(191)	(334)	(38,192)	(415)	(835)	(89,382)			
GRAHAM	213	406	130	276	48,437	227.40	119.30	(28)	(58)	(5,481)	(89)	(186)	(21,184)			
GREENLEE	24	53	13	40	5,380	224.17	101.51	(2)	0	5	(13)	(26)	(2,612)			
PIMA	4,004	8,506	2,408	6,098	837,049	209.05	98.41	(1,203)	(2,011)	(230,859)	(2,643)	(5,232)	(574,943)			
SANTA CRUZ	133	271	56	215	26,138	196.53	96.45	(60)	(103)	(12,208)	(135)	(290)	(31,093)			

1/EXCLUDES: PRIOR MONTH NET TOTALS OF 1,304 CASES; 3,287 RECIPIENTS; \$237,047.
 GRANT DIVERSION TOTALS OF: 1,587 CASES; \$1,210,526.
 ZERO PAY TOTALS OF 2,609 CASES; 7,774 RECIPIENTS.
 TANF CHILD ONLY: 10,947 CASES; 18,263 RECIPIENTS; \$2,094,590.
 RRP: 399 CASES; 684 RECIPIENTS; \$85,222.

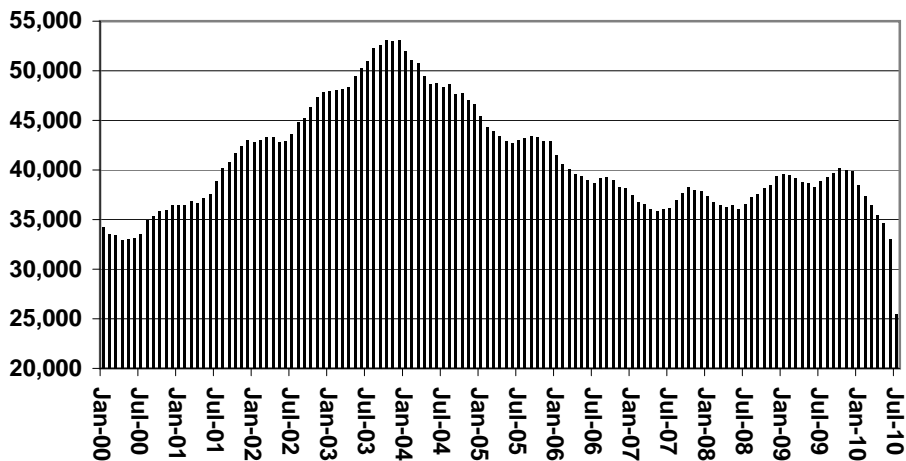
	CURRENT MO. CASES	CURRENT MO. RECIP.	CURRENT MO. DOLLARS	PRIOR MO. CASES	PRIOR MO. RECIP.	PRIOR MO. DOLLARS
PASQUA/YAQUI	276	769	\$81,279	21	75	\$8,682
WM APACHE	826	2,385	\$245,356	15	43	\$2,039
SALT RIVER	66	197	\$19,011	4	13	\$864
SAN CARLOS	547	1,193	\$141,487	28	66	\$5,569
HOPÍ	119	343	\$27,516	7	24	\$1,256
TOTAL	1,834	4,887	\$514,649	75	221	\$18,410

TANF SUMMARY

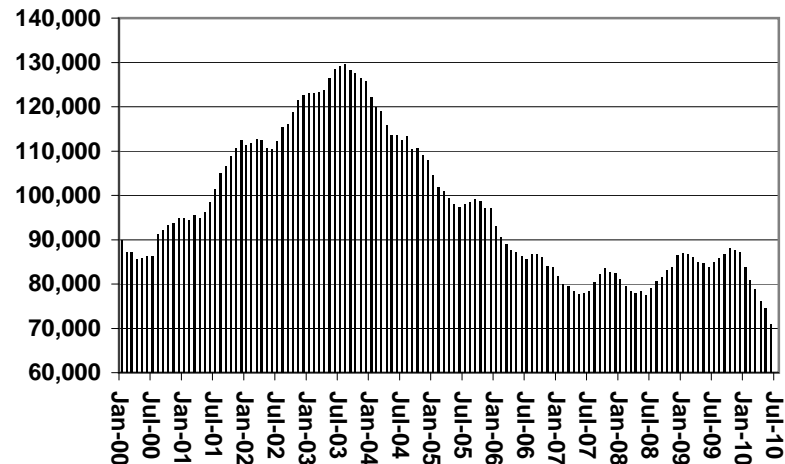
TABLES 1, 1A, 1B, & 1C

COMPARISON OF CASES, RECIPIENTS, PAYMENTS & AVERAGE PAYMENTS FOR 2000, 2001, 2002, 2003, 2004, 2005, 2006, 2007, 2008, 2009, & 2010

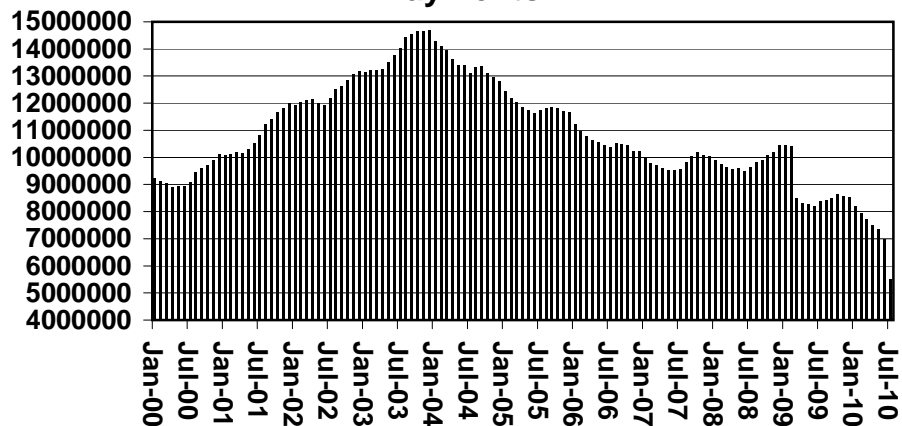
Cases



Recipients



Payments



Average Payments Per Recipient

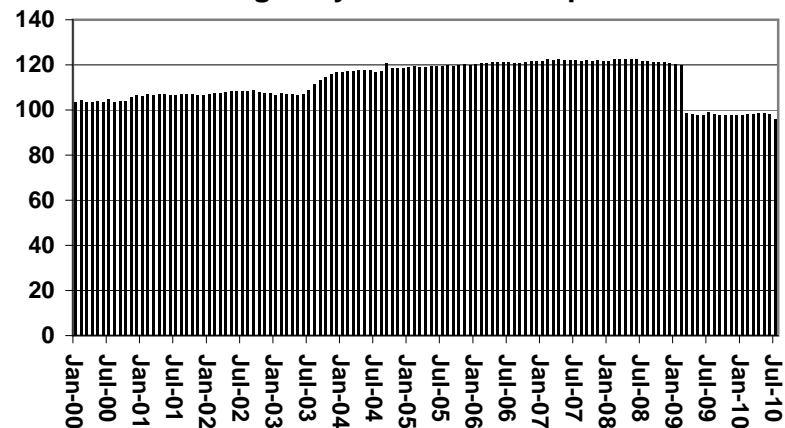


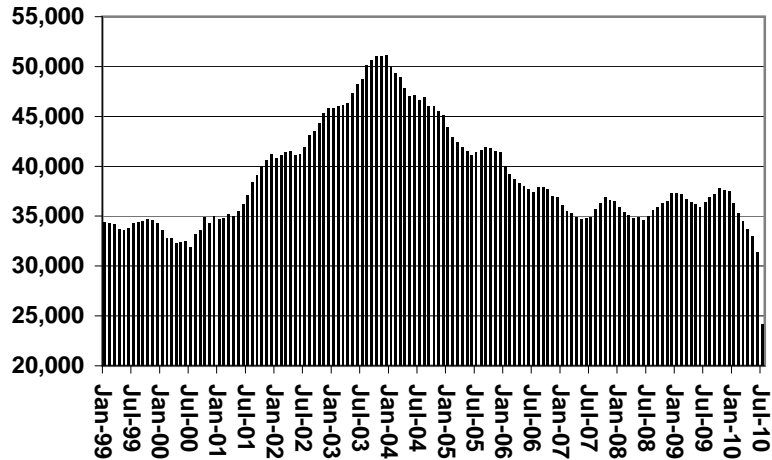
CHART 1

CASH ASSISTANCE PROGRAM

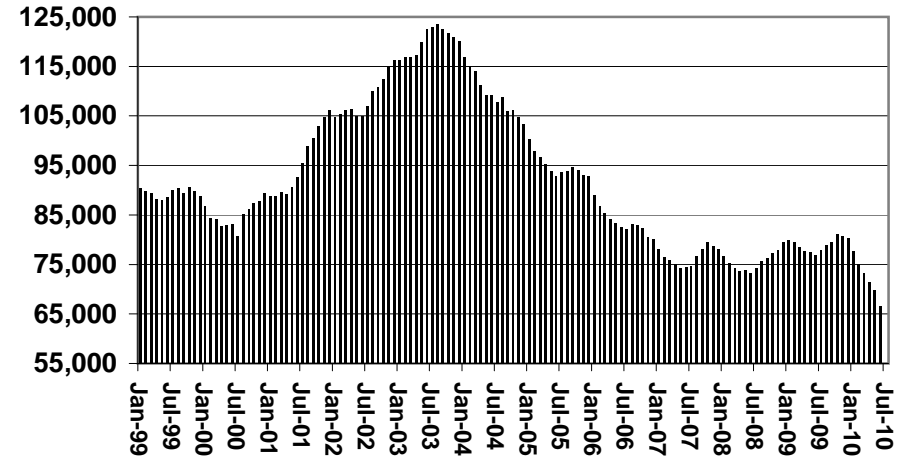
COMPARISON OF CASES, RECIPIENTS, PAYMENTS & AVERAGE PAYMENTS

FOR 1999, 2000, 2001, 2002, 2003, 2004, 2005, 2006, 2007, 2008, 2009, & 2010

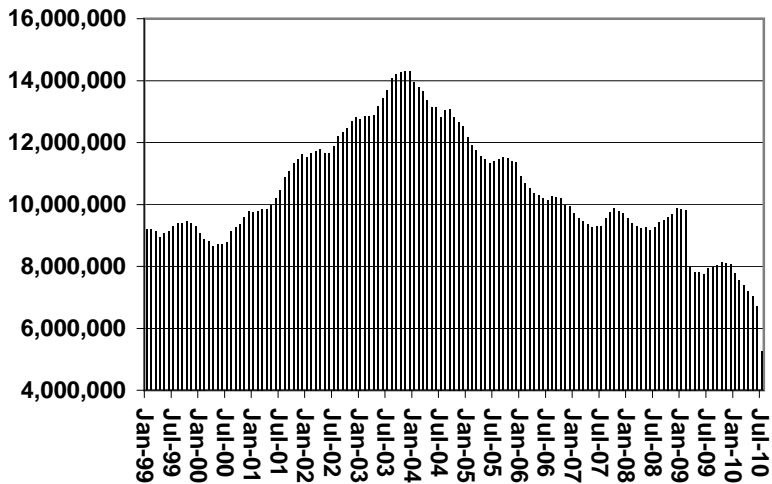
Cases



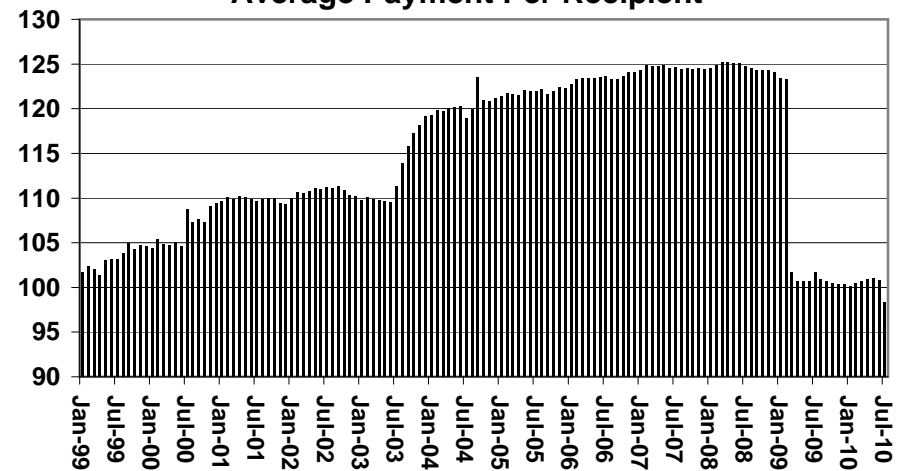
Recipients



Payments



Average Payment Per Recipient



**TABLE 1A
CA-UP**

CASH ASSISTANCE UNEMPLOYED PARENT PROGRAM: ARIZONA 1

	JULY 2010							CHANGE FROM			JUNE 2010			JULY 2009		
	FAMILIES (CASES)	PERSONS (RECIP.)	ADULTS	CHILDREN	TOTAL PAYMENTS	AVERAGE PAYMENT/ CASE	AVERAGE PAYMENT/ RECIP.	FAMILIES (CASES)	PERSONS (RECIP.)	TOTAL PAYMENTS	FAMILIES (CASES)	PERSONS (RECIP.)	TOTAL PAYMENTS			
	ARIZONA	685	2,491	1,010	1,481	191,686	279.83	76.95	(56)	(151)	(13,797)	(690)	(2,292)	(192,537)		
REGION																
MARICOPA	487	1,743	659	1,084	136,752	280.80	78.46	(31)	(82)	(7,025)	(398)	(1,200)	(103,710)			
NORTHERN	18	60	33	27	4,820	267.78	80.33	(5)	(24)	(1,570)	(46)	(183)	(14,545)			
APACHE	0	0	0	0	0	0.00	0.00	0	0	0	(1)	(6)	(449)			
COCONINO	0	0	0	0	0	0.00	0.00	0	0	0	(3)	(12)	(840)			
MOHAVE	14	47	26	21	4,020	287.14	85.53	(2)	(12)	(731)	(25)	(96)	(7,414)			
NAVAJO	4	13	7	6	800	200.00	61.54	(3)	(12)	(839)	(17)	(69)	(5,842)			
CENTRAL	57	219	102	117	16,104	282.53	73.53	(6)	(20)	(1,055)	(80)	(302)	(22,029)			
GILA	4	15	7	8	1,220	305.00	81.33	(1)	(4)	(169)	(3)	(12)	(863)			
LA PAZ	2	8	3	5	670	335.00	83.75	(2)	(6)	(322)	(8)	(25)	(1,712)			
PINAL	31	121	59	62	8,337	268.94	68.90	(3)	(10)	(564)	(69)	(265)	(19,454)			
YAVAPAI	6	25	9	16	1,921	320.17	76.84	0	6	548	(5)	(10)	(946)			
YUMA	14	50	24	26	3,956	282.57	79.12	1	7	326	(10)	(37)	(2,896)			
SOUTHERN	123	469	216	253	34,010	276.50	72.52	(15)	(38)	(5,021)	(151)	(560)	(48,411)			
COCHISE	6	20	8	12	1,537	256.17	76.85	2	8	637	(15)	(60)	(4,866)			
GRAHAM	1	4	2	2	211	211.00	52.75	(1)	(3)	(278)	(4)	(11)	(980)			
GREENLEE	0	0	0	0	0	0.00	0.00	0	0	0	0	0	0			
PIMA	116	445	206	239	32,262	278.12	72.50	(16)	(43)	(5,380)	(127)	(469)	(41,095)			
SANTA CRUZ	0	0	0	0	0	0.00	0.00	0	0	0	(5)	(20)	(1,470)			

1/EXCLUDES: PRIOR MONTH NET TOTALS OF: 75 CASES; 305 RECIPIENTS; \$26,147.
GRANT DIVERSION TOTALS OF: 0 CASES; \$0.
ZERO PAY TOTALS OF 33 CASES; 143 RECIPIENTS.

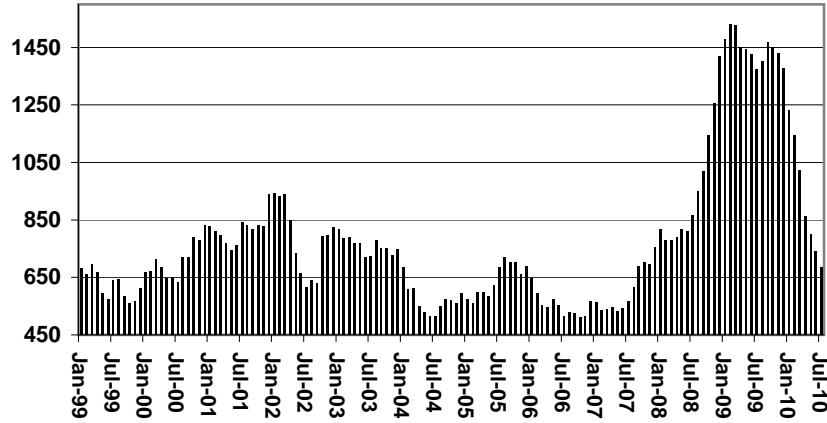
	CURRENT MO. CASES	CURRENT MO. RECIP.	CURRENT MO. DOLLARS	PRIOR MO. CASES	PRIOR MO. RECIP	PRIOR MO. DOLLARS
PASQUAYYAQUI	7	23	\$2,204	1	4	\$254
WM APACHE	0	0	\$0	0	0	\$0
SALT RIVER	0	0	\$0	0	0	\$0
SAN CARLOS	1	4	\$106	0	0	\$0
HOPI	0	0	\$0	0	0	\$0
TOTAL	8	27	\$2,310	1	4	\$254

CASES WITH GRANT UNDER \$100 (SEE TABLE 1C).

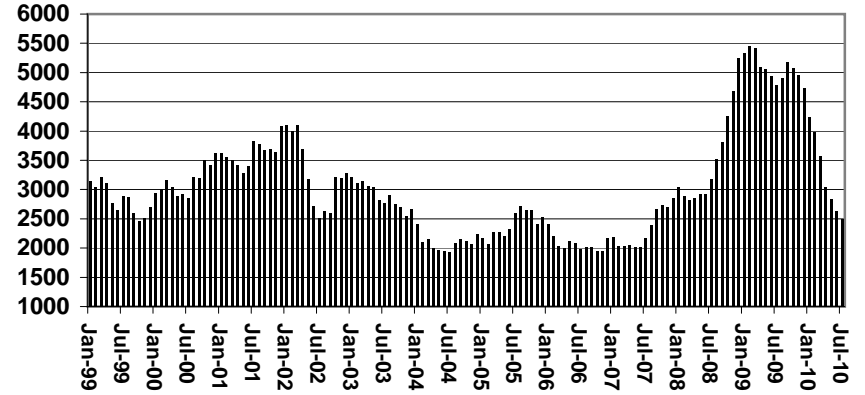
CHART 1A

CASH ASSISTANCE UNEMPLOYED PARENT PROGRAM COMPARISON OF CASES, RECIPIENTS, PAYMENTS & AVERAGE PAYMENTS FOR 1999, 2000, 2001, 2002, 2003, 2004, 2005, 2006, 2007, 2008, 2009, & 2010

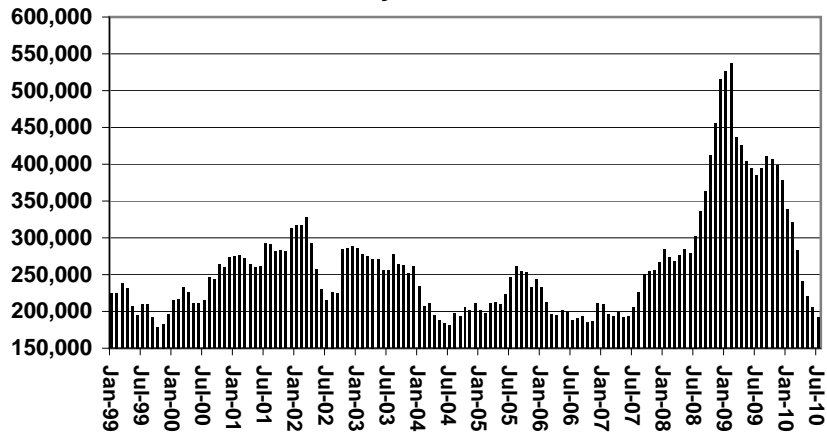
Cases



Recipients



Payments



Average Payment Per Recipient

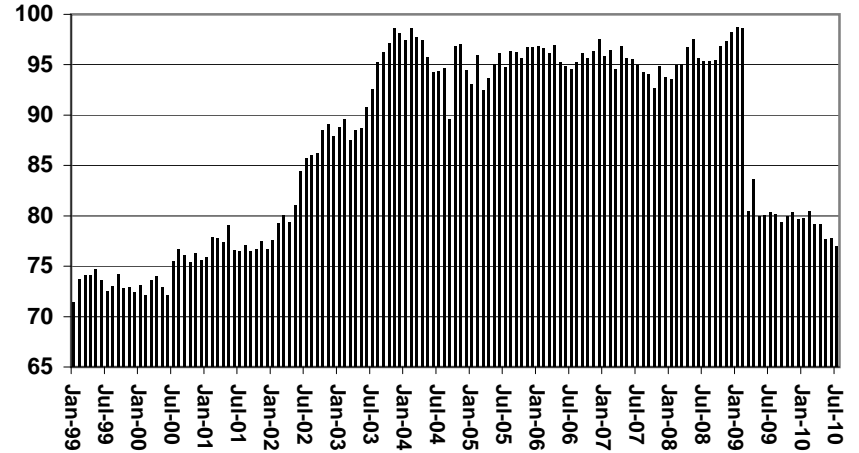


TABLE 1B 1/

**CASH ASSISTANCE: ARIZONA
CASES WITH GRANT UNDER \$100**

	JULY 2010							CHANGE FROM			JULY 2009		
	FAMILIES (CASES)	PERSONS (RECIP.)	ADULTS	CHILDREN	TOTAL PAYMENTS	AVERAGE	AVERAGE	FAMILIES (CASES)	PERSONS (RECIP.)	TOTAL PAYMENTS	FAMILIES (CASES)	PERSONS (RECIP.)	TOTAL PAYMENTS
						PAYMENT/ CASE	PAYMENT/ RECIP.						
ARIZONA	623	1,312	341	971	44,461	71.37	33.89	(214)	(373)	(11,950)	(399)	(654)	(27,211)
REGION													
MARICOPA	411	908	219	689	28,804	70.08	31.72	(148)	(253)	(8,418)	(233)	(364)	(14,717)
NORTHERN	33	66	22	44	2,294	69.52	34.76	(11)	(18)	(795)	(32)	(60)	(2,139)
APACHE	2	4	1	3	146	73.00	36.50	0	0	36	0	1	(18)
COCONINO	1	2	1	1	90	90.00	45.00	(1)	(3)	(77)	(6)	(10)	(352)
MOHAVE	24	47	16	31	1,646	68.58	35.02	(7)	(12)	(447)	(18)	(33)	(1,166)
NAVAJO	6	13	4	9	412	68.67	31.69	(3)	(3)	(307)	(8)	(18)	(603)
CENTRAL	65	122	35	87	5,187	79.80	42.52	(18)	(26)	(938)	(37)	(88)	(2,492)
GILA	6	12	3	9	281	46.83	23.42	0	1	(282)	0	6	(154)
LA PAZ	8	13	5	8	517	64.63	39.77	(2)	(6)	(34)	(3)	(7)	(314)
PINAL	22	38	10	28	1,947	88.50	51.24	(5)	(5)	(79)	(8)	(40)	(562)
YAVAPAI	16	32	9	23	1,165	72.81	36.41	(5)	(10)	(36)	(20)	(34)	(1,250)
YUMA	13	27	8	19	1,277	98.23	47.30	(6)	(6)	(507)	(6)	(13)	(212)
SOUTHERN	114	216	65	151	8,176	71.72	37.85	(37)	(76)	(1,799)	(78)	(133)	(6,985)
COCHISE	12	19	4	15	876	73.00	46.11	(2)	(8)	(274)	(13)	(21)	(1,178)
GRAHAM	4	7	3	4	197	49.25	28.14	(2)	(8)	(134)	1	3	(218)
GREENLEE	0	0	0	0	0	0.00	0.00	0	0	(58)	(1)	(3)	(56)
PIMA	91	179	55	124	6,592	72.44	36.83	(32)	(57)	(1,394)	(68)	(115)	(5,766)
SANTA CRUZ	7	11	3	8	511	73.00	46.45	(1)	(3)	61	3	3	233

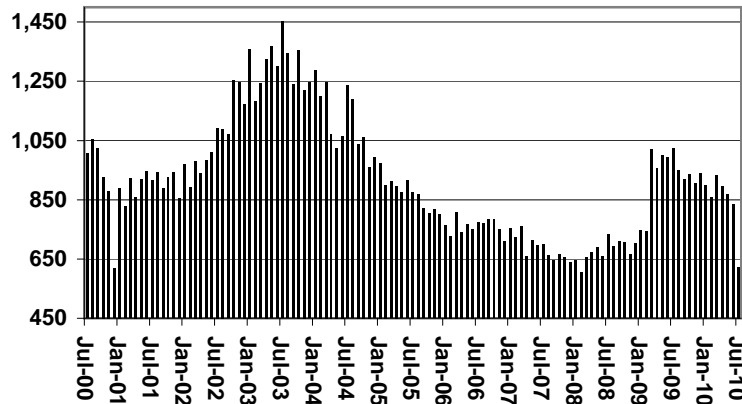
EXCLUDES: PRIOR MONTH NET TOTALS OF 525 CASES; 1,154 RECIPIENTS; \$32,346.

CHART 1B

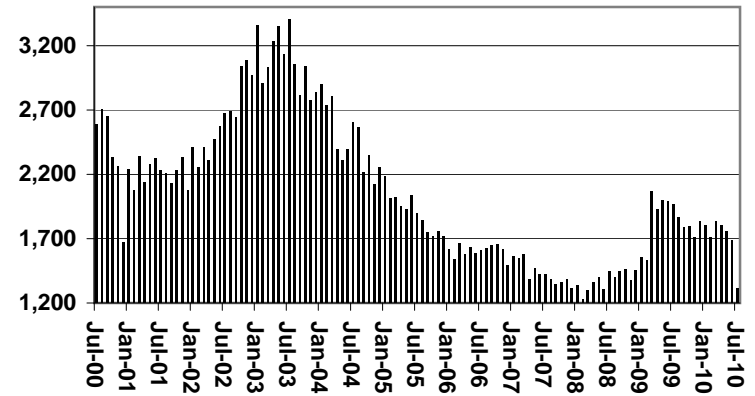
CASH ASSISTANCE PROGRAM CASES WITH GRANT UNDER \$100

FOR 1999, 2000, 2001, 2002, 2003, 2004, 2005, 2006, 2007, 2008, 2009, & 2010

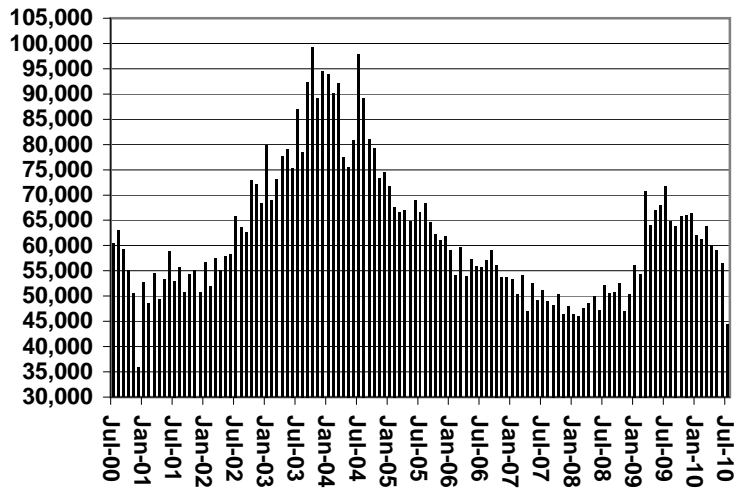
Cases



Recipients



Payments



Average Payment Per Recipient

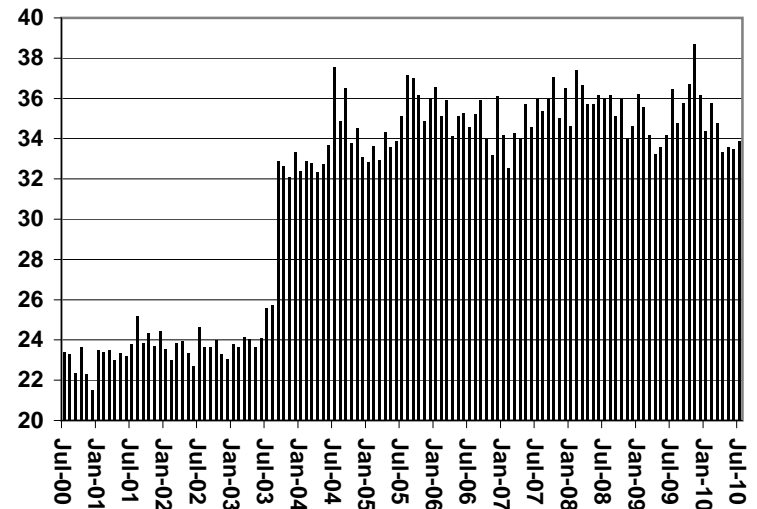


TABLE 1C 1/

**CASH ASSISTANCE UNEMPLOYED PARENT PROGRAM: ARIZONA
CASES WITH GRANT UNDER \$100**

	JULY 2010							CHANGE FROM			JUNE 2010			JULY 2009		
	FAMILIES (CASES)	PERSONS (RECIP.)	ADULTS	CHILDREN	TOTAL PAYMENTS	AVERAGE PAYMENT/ CASE	AVERAGE PAYMENT/ RECIP.	FAMILIES (CASES)	PERSONS (RECIP.)	TOTAL PAYMENTS	FAMILIES (CASES)	PERSONS (RECIP.)	TOTAL PAYMENTS	FAMILIES (CASES)	PERSONS (RECIP.)	TOTAL PAYMENTS
	ARIZONA	25	78	20	58	1,311	52.44	16.81	(1)	(11)	(178)	(22)	(57)	(1,141)		
REGION																
MARICOPA	20	59	12	47	1,070	53.50	18.14	0	(7)	(108)	(18)	(48)	(914)			
NORTHERN	0	0	0	0	0	0.00	0.00	0	0	0	(1)	(3)	(13)			
APACHE	0	0	0	0	0	0.00	0.00	0	0	0	0	0	0			
COCONINO	0	0	0	0	0	0.00	0.00	0	0	0	0	0	0			
MOHAVE	0	0	0	0	0	0.00	0.00	0	0	0	(1)	(3)	(13)			
NAVAJO	0	0	0	0	0	0.00	0.00	0	0	0	0	0	0			
CENTRAL	3	13	6	7	109	36.33	8.38	1	3	18	(2)	(5)	(207)			
GILA	0	0	0	0	0	0.00	0.00	0	0	0	(1)	(3)	(88)			
LA PAZ	0	0	0	0	0	0.00	0.00	0	0	0	0	0	0			
PINAL	2	8	4	4	72	36.00	9.00	1	3	18	2	8	72			
YAVAPAI	0	0	0	0	0	0.00	0.00	0	0	0	(2)	(6)	(120)			
YUMA	1	5	2	3	37	37.00	7.40	0	0	0	(1)	(4)	(71)			
SOUTHERN	2	6	2	4	132	66.00	22.00	(2)	(7)	(88)	(1)	(1)	(7)			
COCHISE	0	0	0	0	0	0.00	0.00	0	0	0	0	0	0			
GRAHAM	0	0	0	0	0	0.00	0.00	0	0	0	(1)	(3)	(51)			
GREENLEE	0	0	0	0	0	0.00	0.00	0	0	0	0	0	0			
PIMA	2	6	2	4	132	66.00	22.00	(2)	(7)	(88)	0	2	44			
SANTA CRUZ	0	0	0	0	0	0.00	0.00	0	0	0	0	0	0			

EXCLUDES: PRIOR MONTH NET TOTALS OF 30 CASES; 97 RECIPIENTS; \$1,616.

CHART 1C

CASH ASSISTANCE UNEMPLOYED PARENT PROGRAM

CASES WITH GRANT UNDER \$100

FOR 1999, 2000, 2001, 2002, 2003, 2004, 2005, 2006, 2007, 2008, 2009, & 2010

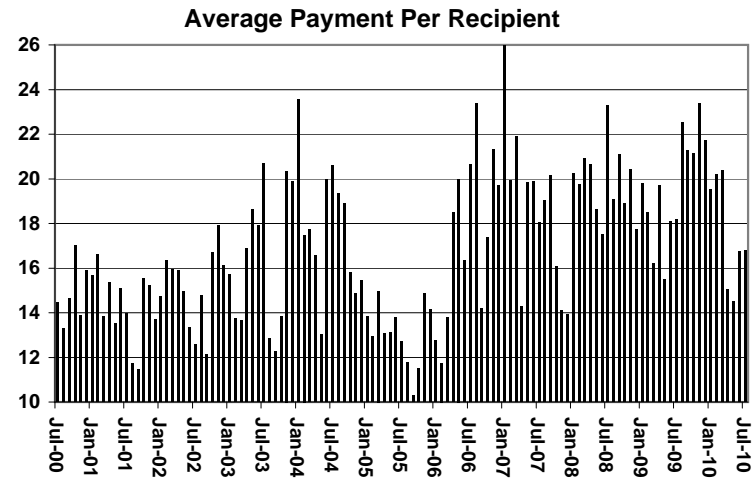
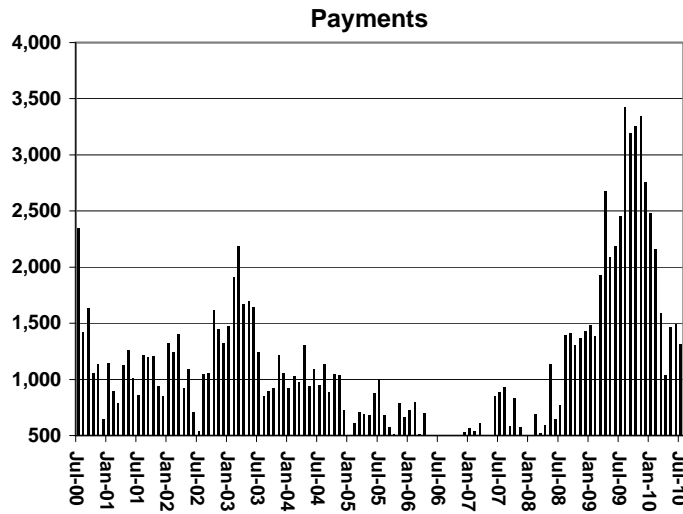
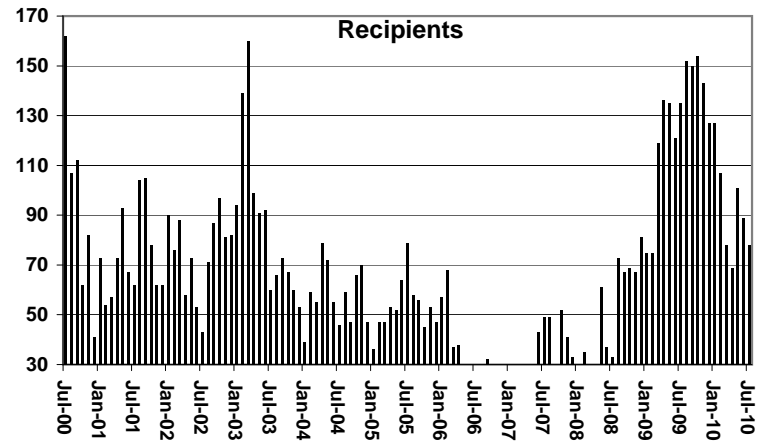
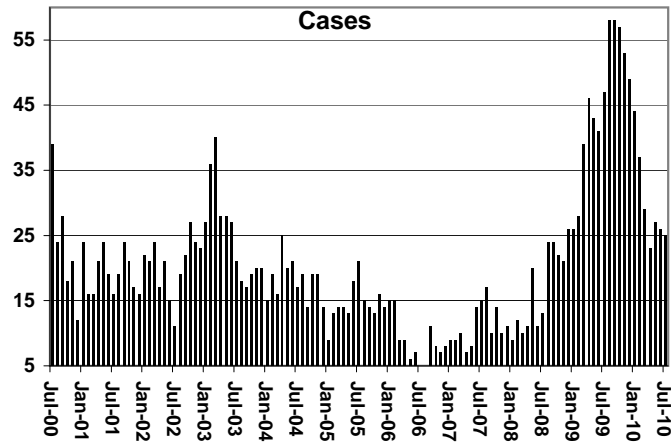


TABLE 4

TUBERCULOSIS CONTROL: ARIZONA 1/

	JULY 2010					CHANGE FROM					
						JUNE 2010			JULY 2009		
	NUMBER OF CASES	PERSONS (RECIP.)	TOTAL PAYMENTS	AVERAGE PAYMENT/ CASE	AVERAGE PAYMENT/ RECIP.	NUMBER OF CASES	PERSONS (RECIP.)	TOTAL PAYMENTS	NUMBER OF CASES	PERSONS (RECIP.)	TOTAL PAYMENTS
ARIZONA	1	1	173	173.00	173.00	0	0	0	(1)	(1)	(108)
REGION											
MARICOPA	1	1	173	173.00	173.00	0	0	0	0	0	0
NORTHERN	0	0	0	0.00	0.00	0	0	0	0	0	0
APACHE	0	0	0	0.00	0.00	0	0	0	0	0	0
COCONINO	0	0	0	0.00	0.00	0	0	0	0	0	0
MOHAVE	0	0	0	0.00	0.00	0	0	0	0	0	0
NAVAJO	0	0	0	0.00	0.00	0	0	0	0	0	0
CENTRAL	0	0	0	0.00	0.00	0	0	0	0	0	0
GILA	0	0	0	0.00	0.00	0	0	0	0	0	0
LA PAZ	0	0	0	0.00	0.00	0	0	0	0	0	0
PINAL	0	0	0	0.00	0.00	0	0	0	0	0	0
YAVAPAI	0	0	0	0.00	0.00	0	0	0	0	0	0
YUMA	0	0	0	0.00	0.00	0	0	0	0	0	0
SOUTHERN	0	0	0	0.00	0.00	0	0	0	(1)	(1)	(108)
COCHISE	0	0	0	0.00	0.00	0	0	0	(1)	(1)	(108)
GRAHAM	0	0	0	0.00	0.00	0	0	0	0	0	0
GREENLEE	0	0	0	0.00	0.00	0	0	0	0	0	0
PIMA	0	0	0	0.00	0.00	0	0	0	0	0	0
SANTA CRUZ	0	0	0	0.00	0.00	0	0	0	0	0	0

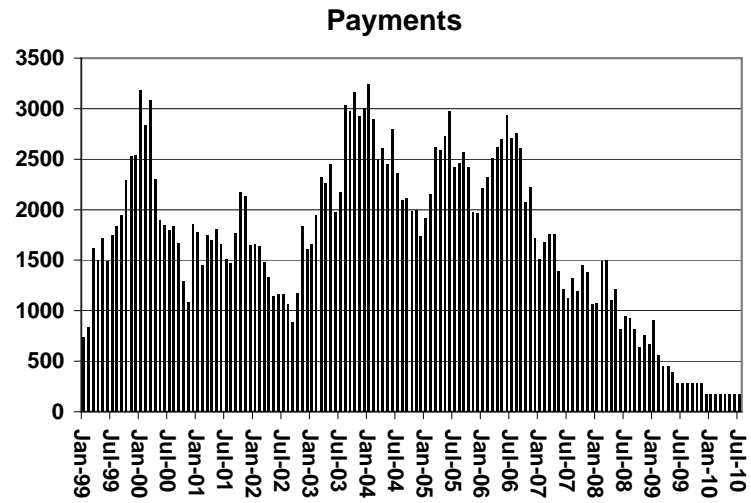
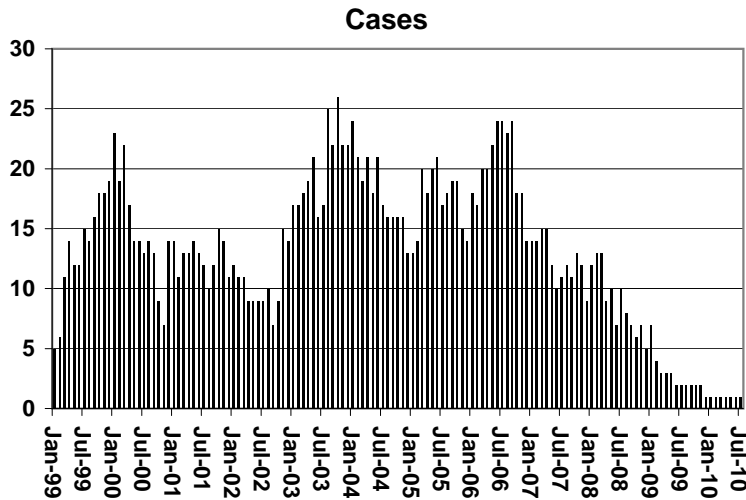
1/EXCLUDES: PRIOR MONTH NET TOTALS OF : 0 CASES; 0 RECIPIENTS; \$0.

CHART 4

TUBERCULOSIS CONTROL PROGRAM

COMPARISON OF CASES, PAYMENTS & AVERAGE PAYMENTS

FOR 1999, 2000, 2001, 2002, 2003, 2004, 2005, 2006, 2007, 2008, 2009, & 2010



Average Payment Per Case

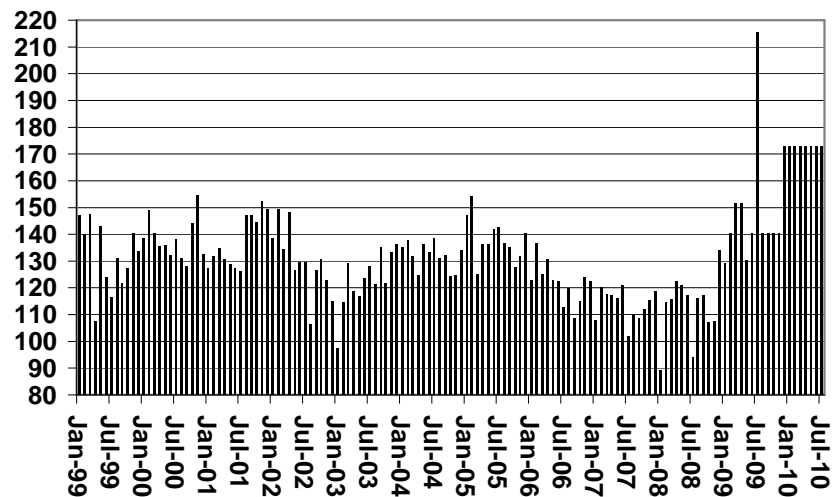


TABLE 6

SUPPLEMENTAL NUTRITION ASSISTANCE PROGRAM: ARIZONA 1

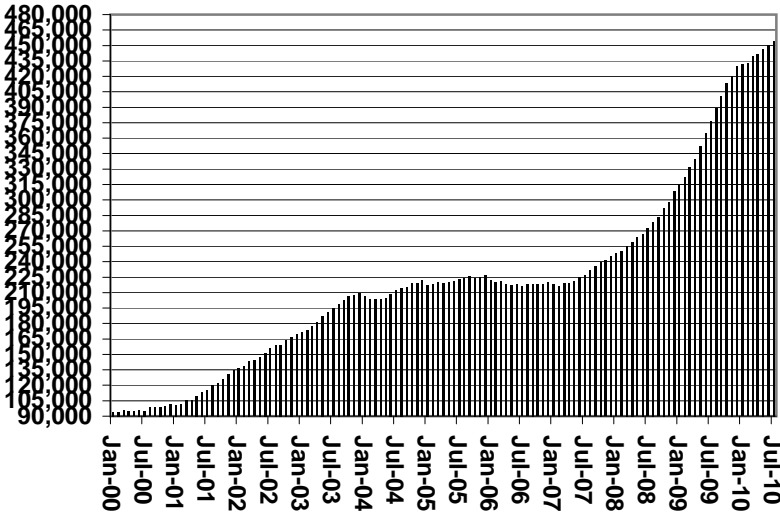
	CHANGE FROM												
	JULY 2010				JUNE 2010			JULY 2009					
	HOUSEHOLDS	PERSONS	ADULTS	CHILDREN	TOTAL COUPON ISSUANCE	AVERAGE ALLOT./ HOUSEHOLD	AVERAGE ALLOT./ PERSON	HOUSEHOLDS	PERSONS	TOTAL COUPON ISSUANCE	HOUSEHOLDS	PERSONS	TOTAL COUPON ISSUANCE
ARIZONA	454,358	1,044,940	535,532	509,408	133,588,297	294.02	127.84	4,048	7,573	1,496,145	77,401	150,671	14,750,314
REGION													
MARICOPA	247,861	570,093	274,158	295,935	73,171,995	295.21	128.35	1,201	1,487	409,617	47,282	93,698	8,723,498
NORTHERN	51,942	127,478	70,942	56,536	16,044,163	308.89	125.86	721	1,749	316,546	7,458	14,636	1,599,799
APACHE	9,766	27,662	14,757	12,905	3,446,624	352.92	124.60	81	367	77,167	3,297	7,705	945,484
COCONINO	9,553	23,768	12,639	11,129	2,975,665	311.49	125.20	190	492	55,898	1,435	1,230	131,911
MOHAVE	19,923	42,375	25,379	16,996	5,388,819	270.48	127.17	264	438	83,606	3,673	9,095	986,478
NAVAJO	12,700	33,673	18,167	15,506	4,233,055	333.31	125.71	186	452	99,875	(947)	(3,394)	(464,074)
CENTRAL	58,625	138,812	75,124	63,688	17,470,458	298.00	125.86	662	1,625	306,384	7,867	15,613	1,629,609
GILA	5,836	12,661	7,468	5,193	1,676,136	287.21	132.39	33	82	11,467	1,003	1,691	202,634
LA PAZ	1,922	3,984	2,299	1,685	516,000	268.47	129.52	(3)	6	(108)	230	411	37,415
PINAL	20,878	51,609	26,790	24,819	6,626,242	317.38	128.39	51	206	48,290	1,755	3,117	245,747
YAVAPAI	14,248	28,966	17,223	11,743	3,630,921	254.84	125.35	204	301	65,374	2,616	4,880	496,277
YUMA	15,741	41,592	21,344	20,248	5,021,159	318.99	120.72	377	1,030	181,361	2,263	5,514	647,536
SOUTHERN	95,930	208,557	115,308	93,249	26,901,681	280.43	128.99	1,464	2,712	463,598	14,794	26,724	2,797,408
COCHISE	10,035	21,844	12,341	9,503	2,727,212	271.77	124.85	150	320	45,107	1,161	2,288	233,767
GRAHAM	3,290	7,727	4,284	3,443	1,001,115	304.29	129.56	39	8	25,938	568	1,044	153,648
GREENLEE	509	1,133	649	484	142,789	280.53	126.03	(6)	(9)	589	(5)	(106)	(8,118)
PIMA	77,907	166,596	92,348	74,248	21,675,117	278.22	130.11	1,207	2,197	351,384	12,917	23,145	2,420,162
SANTA CRUZ	4,189	11,257	5,686	5,571	1,355,448	323.57	120.41	74	196	40,580	153	353	(2,051)

1/EXCLUDES: PRIOR MONTH NET TOTALS OF : 745 CASES; 2,083 RECIPIENTS; \$2,026,851.
 AGED CANCELATIONS: 7,879 CASES; 9,668 RECIPIENTS; 481,279.
 SNAP COUPON CONVERSIONS: 0 CASES; 0 RECIPIENTS; \$0.
 SNAP CHILD ONLY: 38,606 CASES; 92,427 RECIPIENTS; \$12,124,496.
 SNAP ZERO PAY: 12,384 CASES; 51,767 RECIPIENTS.

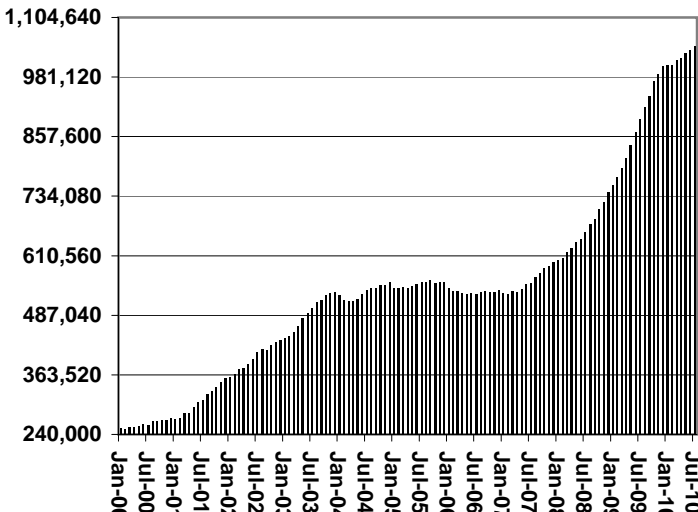
CHART 6

SUPPLEMENTAL NUTRITION ASSISTANCE PROGRAM (SNAP) COMPARISON OF HOUSEHOLDS, RECIPIENTS, PAYMENTS & AVERAGE PAYMENTS FOR 1999, 2000, 2001, 2002, 2003, 2004, 2005, 2006, 2007, 2008, 2009, & 2010

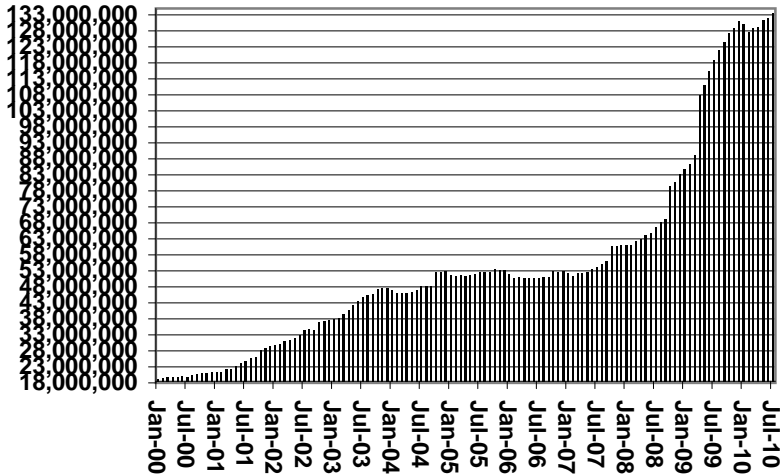
Households



Recipients



Payments



Average Payment Per Household

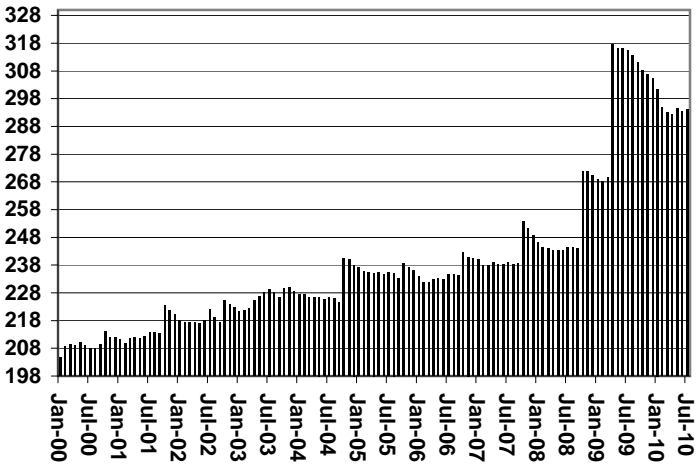


TABLE 7A
MEDICAL ASSISTANCE PROGRAM
RECIPIENTS
JULY 2010

	SOBRA WOMAN 133% FPL	SOBRA CHILD	ADULT W/O CHILD 100% FPL	FOSTER CARE	1931 36% FPL	FEDERAL EMERGENCY SERVICES	INFANTS	ADULT W/O CHILD 40% FPL	MEDICAL W/SPEND DOWN	SOBRA WOMAN 100% FPL	SOBRA CHILD 100% FPL	TRANSITIONAL MEDICAL T1 - T4	1931 100% FPL	YATI	OTHER	TOTAL CASES
ARIZONA	10,521	67,689	61,231	12,011	335,951	58,479	48,551	166,202	7,320	3,916	227,899	43,729	120,947	333	27,506	1,192,285
REGION																
MARICOPA	5,701	37,950	29,901	6,260	186,316	45,998	29,275	84,738	4,060	1,994	133,860	23,803	62,522	194	14,167	666,739
NORTHERN	1,176	7,592	7,416	631	44,436	1,320	4,972	24,924	1,059	554	23,314	4,877	14,803	16	2,927	140,017
APACHE	185	1,523	1,005	40	11,508	108	980	5,559	152	109	4,320	762	2,765	0	397	29,413
COCONINO	282	1,418	1,582	130	8,579	366	1,105	4,697	185	119	4,935	1,065	2,994	8	411	27,876
NAVAJO	311	2,358	1,763	150	12,765	285	1,345	6,742	213	142	5,720	1,276	3,839	5	559	37,473
MOHAVE	398	2,293	3,066	311	11,584	561	1,542	7,926	509	184	8,339	1,774	5,205	3	1,560	45,255
CENTRAL	1,712	9,439	9,439	1,481	43,028	4,358	5,994	21,433	1,112	579	28,850	6,314	17,984	31	4,289	156,043
GILA	122	684	764	101	4,481	132	536	2,653	96	49	1,900	371	1,263	1	343	13,496
LA PAZ	46	230	277	16	1,282	128	131	840	25	7	723	168	429	0	152	4,454
PINAL	556	4,038	2,764	589	17,930	1,269	2,164	8,020	365	165	9,902	1,921	5,660	11	1,226	56,580
YAVAPAI	396	1,850	2,706	468	7,309	1,287	1,249	5,049	338	110	6,257	1,655	3,962	14	1,266	33,916
YUMA	592	2,637	2,928	307	12,026	1,542	1,914	4,871	288	248	10,068	2,199	6,670	5	1,302	47,597
SOUTHERN	1,932	12,708	14,475	3,639	62,171	6,803	8,310	35,107	1,089	789	41,875	8,735	25,638	92	6,123	229,486
COCHISE	216	1,265	1,680	244	6,818	456	851	3,178	149	74	4,205	997	2,717	4	847	23,701
GRAHAM	109	506	519	73	2,697	50	352	1,369	52	31	1,414	363	881	2	144	8,562
GREENLEE	16	59	68	8	433	6	58	185	9	5	248	65	138	2	42	1,342
PIMA	1,496	10,235	11,339	3,285	48,845	5,768	6,592	29,313	833	625	33,012	6,734	19,995	83	4,625	182,780
SANTA CRUZ	95	643	869	29	3,378	523	457	1,062	46	54	2,996	576	1,907	1	465	13,101

TABLE 7B
MEDICAL ASSISTANCE PROGRAM
RECIPIENTS

CHANGE FROM

JUNE 2010

	SOBRA WOMAN 133% FPL	SOBRA CHILD	ADULT W/O CHILD 100% FPL	FOSTER CARE	1931 36% FPL	FEDERAL EMERGENCY SERVICES	INFANTS	ADULT W/O CHILD 40% FPL	MEDICAL W/SPEND DOWN	SOBRA WOMAN 100% FPL	SOBRA CHILD 100% FPL	TRANSITIONAL MEDICAL T1 - T4	1931 100% FPL	YATI	OTHER	TOTAL CASES
ARIZONA	128	239	292	(9)	2,122	(2,701)	(294)	2,894	85	37	102	(1,025)	277	(17)	216	2,346
REGION																
MARICOPA	64	137	135	(2)	35	(2,263)	(285)	1,281	37	13	(23)	(245)	67	(9)	65	(993)
NORTHERN	3	(14)	(42)	(4)	920	(66)	5	533	42	14	(153)	(277)	(35)	1	52	979
APACHE	(10)	(50)	(41)	(2)	327	(7)	1	92	(2)	17	(63)	(114)	(18)	(1)	13	142
COCONINO	(3)	25	12	4	116	(17)	10	70	21	2	57	(74)	44	2	2	271
NAVAJO	(77)	87	(1,307)	(169)	1,331	(312)	(195)	(965)	(280)	(48)	(2,703)	(565)	(1,376)	2	(970)	(7,547)
MOHAVE	93	(76)	1,294	163	(854)	270	189	1,336	303	43	2,556	476	1,315	(2)	1,007	8,113
CENTRAL	43	23	74	12	519	(110)	45	415	(18)	(2)	88	(305)	111	2	78	975
GILA	(5)	(7)	(12)	1	80	4	2	35	(11)	1	(41)	(46)	(17)	0	(6)	(22)
LA PAZ	5	(7)	3	(1)	59	(9)	(9)	32	2	(6)	(8)	8	(21)	0	1	49
PINAL	18	34	38	(5)	341	(21)	17	157	(21)	(7)	31	(122)	47	1	17	525
YAVAPAI	3	5	24	14	(156)	(59)	10	31	13	(6)	25	6	(1)	0	39	(52)
YUMA	22	(2)	21	3	195	(25)	25	160	(1)	16	81	(151)	103	1	27	475
SOUTHERN	18	93	125	(15)	648	(262)	(59)	665	24	12	190	(198)	134	(11)	21	1,385
COCHISE	20	13	11	2	(10)	(25)	(6)	53	9	4	53	28	36	1	3	192
GRAHAM	7	7	14	(1)	102	1	(22)	24	9	(5)	(42)	(17)	(36)	1	7	49
GREENLEE	(1)	(1)	1	0	(13)	0	5	5	3	0	10	(7)	6	0	(3)	5
PIMA	(8)	65	77	(16)	497	(231)	(31)	559	3	6	112	(132)	78	(13)	11	977
SANTA CRUZ	0	9	22	0	72	(7)	(5)	24	0	7	57	(70)	50	0	3	162

TABLE 7C
MEDICAL ASSISTANCE PROGRAM
RECIPIENTS

CHANGE FROM

JULY 2009

	SOBRA WOMAN 133% FPL	SOBRA CHILD	ADULT W/O CHILD 100% FPL	FOSTER CARE	1931 36% FPL	FEDERAL EMERGENCY SERVICES	INFANTS	ADULT W/O CHILD 40% FPL	MEDICAL W/SPEND DOWN	SOBRA WOMAN 100% FPL	SOBRA CHILD 100% FPL	TRANSITIONAL MEDICAL T1 - T4	3E 1931 100% FPL	YATI	OTHER	TOTAL CASES
ARIZONA	(430)	1,820	11,664	499	6,541	(31,856)	(868)	32,831	991	(1)	19,366	8,429	14,861	33	2,660	66,540
REGION																
MARICOPA	20	1,026	6,984	417	4,198	(24,970)	62	19,581	515	4	13,798	5,548	10,323	16	1,712	39,234
NORTHERN	(146)	228	925	32	784	(605)	(214)	3,913	182	2	1,203	446	954	2	290	7,996
APACHE	(11)	104	5	1	66	(16)	(24)	969	53	6	148	60	172	(2)	38	1,569
COCONINO	(33)	(7)	273	(11)	317	(202)	(57)	783	51	3	343	109	265	1	64	1,899
NAVAJO	(182)	118	(871)	(132)	1,543	(573)	(253)	92	(238)	(50)	(2,028)	(381)	(940)	3	(833)	(4,725)
MOHAVE	80	13	1,518	174	(1,142)	186	120	2,069	316	43	2,740	658	1,457	0	1,021	9,253
CENTRAL	(28)	315	1,289	27	1,417	(1,439)	(152)	3,119	211	(27)	1,433	775	1,187	1	268	8,396
GILA	(21)	(35)	91	6	27	(44)	(28)	288	(12)	12	(67)	30	(43)	1	36	241
LA PAZ	6	9	41	2	16	(43)	(38)	102	(4)	(5)	42	48	54	0	(3)	227
PINAL	(11)	304	464	(20)	407	(523)	(2)	1,138	125	(43)	646	263	504	(4)	10	3,258
YAVAPAI	(27)	22	450	11	252	(398)	(80)	619	36	(28)	661	403	343	2	196	2,462
YUMA	25	15	243	28	715	(431)	(4)	972	66	37	151	31	329	2	29	2,208
SOUTHERN	(276)	251	2,466	23	142	(4,842)	(564)	6,218	83	20	2,932	1,660	2,397	14	390	10,914
COCHISE	(55)	47	169	(17)	113	(213)	(40)	350	22	(19)	248	146	87	(4)	58	892
GRAHAM	(6)	24	18	(5)	137	(9)	(72)	248	0	(14)	7	82	(91)	2	(4)	317
GREENLEE	(3)	2	14	1	(10)	(3)	(4)	23	5	(4)	19	45	(1)	2	22	108
PIMA	(208)	115	2,185	47	(139)	(4,536)	(419)	5,452	63	54	2,627	1,268	2,284	13	277	9,083
SANTA CRUZ	(4)	63	80	(3)	41	(81)	(29)	145	(7)	3	31	119	118	1	37	514

CHART 7

MEDICAL ASSISTANCE PROGRAM

COMPARISON OF RECIPIENTS

FOR 1999, 2000, 2001, 2002, 2003, 2004, 2005, 2006, 2007, 2008, 2009, & 2010

Total Recipients

