



DEPARTMENT OF ECONOMIC SECURITY

Your Partner For A Stronger Arizona

State of Arizona

Department of Economic Security

Family Assistance Administration

Statistical Bulletin

August, 2010

Phone: (602) 542-3678

<https://www.azdes.gov/appreports.aspx>

**** STATISTICAL BULLETIN ****
ARIZONA DEPARTMENT OF ECONOMIC SECURITY
FAMILY ASSISTANCE ADMINISTRATION
BOX 6123, PHOENIX, ARIZONA 85005
PHONE (602) 542-3678

AUGUST 2010

THIS ISSUE OF THE STATISTICAL BULLETIN COMPARES AUGUST 2010 DATA FOR EACH OF THE INDICATED PROGRAMS WITH THE INFORMATION FOR JULY 2010 AND AUGUST 2009. STATEWIDE SUMMARIES OF ACTIVITY WITHIN EACH OF THE SPECIFIC PROGRAMS FOR THIS REPORT PERIOD ARE DISCUSSED BELOW. THE TABLES COMPARE CURRENT AND PRIOR MONTH DATA. DISTRICT AND COUNTY COMPARISONS ARE PROVIDED WITHIN THIS BULLETIN

TANF SUMMARY

COMPARING TO JULY 2010, AUGUST 2010 CASES DECREASED BY 3,082 (12.08%) TO 22,430. RECIPIENTS DECREASED BY 7,026 (12.27%) TO 50,231. PAYMENTS DECREASED BY \$731,929 (13.33%) TO \$4,757,045. AVERAGE PAYMENT PER CASE DECREASED BY \$3.07 (1.43%) TO \$0.00. PAYMENT PER RECIPIENT DECREASED BY \$1.17 (1.22%) TO \$94.70.

COMPARING TO AUGUST 2009, AUGUST 2010 CASES DECREASED BY 16,890 (42.96%). RECIPIENTS DECREASED BY 35,647 (41.51%). TOTAL PAYMENTS DECREASED BY \$3,673,844 (43.58%). THE AVERAGE PAYMENT PER CASE DECREASED BY \$2.34 (1.09%). THE AVERAGE PAYMENT PER RECIPIENT DECREASED BY \$3.47 (3.53%).

CASH ASSISTANCE (CA)

COMPARING TO JULY 2010, AUGUST 2010 CASES DECREASED BY 2,993 (12.38%) TO 21,186. RECIPIENTS DECREASED BY 6,785 (12.71%) TO 46,591. PAYMENTS DECREASED BY \$717,077 (13.65%) TO \$4,534,439. AVERAGE PAYMENT PER CASE DECREASED BY \$3.16 (1.45%) TO \$214.03. PAYMENT PER RECIPIENT DECREASED BY \$1.07 (1.09%) TO \$97.32.

COMPARING TO AUGUST 2009, AUGUST 2010 CASES DECREASED BY 15,723 (42.60%). RECIPIENTS DECREASED BY 32,358 (40.99%). TOTAL PAYMENTS DECREASED BY \$3,434,353 (43.10%). THE AVERAGE PAYMENT PER CASE DECREASED BY \$1.87 (0.87%). THE AVERAGE PAYMENT PER RECIPIENT DECREASED BY \$3.62 (3.59%).

CASH ASSISTANCE UNEMPLOYED PARENT PROGRAM (CA-UP)

COMPARING TO JULY 2010, AUGUST 2010 CASES DECREASED BY 39 (5.69%) TO 646. RECIPIENTS DECREASED BY 133 (5.34%) TO 2,358. PAYMENTS DECREASED BY \$11,160 (5.82%) TO \$180,526. AVERAGE PAYMENT PER CASE DECREASED BY \$0.38 (0.14%) TO \$279.45. PAYMENT PER RECIPIENT DECREASED BY \$0.39 (0.51%) TO \$76.56.

COMPARING TO AUGUST 2009, AUGUST 2010 CASES DECREASED BY 756 (53.92%). RECIPIENTS DECREASED BY 2,555 (52.00%). TOTAL PAYMENTS DECREASED BY \$213,302 (54.16%). THE AVERAGE PAYMENT PER CASE DECREASED BY \$1.46 (0.52%). THE AVERAGE PAYMENT PER RECIPIENT DECREASED BY \$3.60 (4.49%).

CASH ASSISTANCE WITH GRANT UNDER \$100 (CA-MOE)

COMPARING TO JULY 2010, AUGUST 2010 CASES DECREASED BY 45 (7.22%) TO 578. RECIPIENTS DECREASED BY 95 (7.24%) TO 1,217. PAYMENTS DECREASED BY \$3,312 (7.45%) TO \$41,149. AVERAGE PAYMENT PER CASE DECREASED BY \$0.18 (0.25%) TO \$71.19. AVERAGE PAYMENT PER RECIPIENT DECREASED BY \$0.08 (0.24%) TO \$33.81.

COMPARING TO AUGUST 2009, AUGUST 2010 CASES DECREASED BY 373 (39.22%). RECIPIENTS DECREASED BY 647 (34.71%). TOTAL PAYMENTS DECREASED BY \$23,695 (36.54%). THE AVERAGE PAYMENT PER CASE INCREASED BY \$3.00 (4.40%). THE AVERAGE PAYMENT PER RECIPIENT DECREASED BY \$0.98 (2.82%).

CASH ASSISTANCE UNEMPLOYED PARENT PROGRAM WITH GRANT UNDER \$100 (CA-UP-MOE) NEW PROGRAM STARTING 7/01

COMPARING TO JULY 2010, AUGUST 2010 CASES DECREASED BY 6 (23.08%) TO 20. RECIPIENTS DECREASED BY 24 (26.97%) TO 65. PAYMENTS DECREASED BY \$558 (37.47%) TO \$931. AVERAGE PAYMENT PER CASE DECREASED BY \$10.72 (18.72%) TO \$46.55. PAYMENT PER RECIPIENT DECREASED BY \$2.41 (14.41%) TO \$14.32.

COMPARING TO AUGUST 2009, AUGUST 2010 CASES DECREASED BY 38 (65.52%). RECIPIENTS DECREASED BY 87 (5.84%). TOTAL PAYMENTS DECREASED BY \$2,494 (72.82%). THE AVERAGE PAYMENT PER CASE DECREASED BY \$12.50 (21.17%). THE AVERAGE PAYMENT PER RECIPIENT DECREASED BY \$8.21 (36.44%).

TUBERCULOSIS CONTROL PROGRAM (TC)

COMPARING TO JULY 2010, AUGUST 2010 CASES INCREASED BY 0 (0.00%) TO 1. RECIPIENTS INCREASED BY 0 (0.00%) TO 1. PAYMENTS INCREASED BY \$0 (0.00%) TO \$173. AVERAGE PAYMENT PER CASE INCREASED BY \$39.08 (22.59%) TO \$212.08. AVERAGE PAYMENT PER RECIPIENT INCREASED BY \$0.00 (0.00%) TO \$173.00.

COMPARING TO AUGUST 2009, AUGUST 2010 CASES DECREASED BY 1 (50.00%). RECIPIENTS DECREASED BY 1 (50.00%). TOTAL PAYMENTS DECREASED BY \$108 (38.43%). THE AVERAGE PAYMENT PER CASE INCREASED BY \$71.58 (50.95%). THE AVERAGE PAYMENT PER RECIPIENT INCREASED BY \$32.50 (23.13%).

SUPPLEMENTAL NUTRITION ASSISTANCE PROGRAM (SNAP)

COMPARING TO JULY 2010, AUGUST 2010 SUPPLEMENTAL NUTRITION ASSISTANCE HOUSEHOLDS INCREASED BY 2,552 (0.56%) TO 456,910. PERSONS RECEIVING SUPPLEMENTAL NUTRITION ASSISTANCE INCREASED BY 2,839 (0.27%) TO 1,047,779. TOTAL COUPON ISSUANCE INCREASED BY \$825,280 (0.62%) TO \$134,413,577. THE AVERAGE HOUSEHOLD ALLOTMENT INCREASED BY \$0.16 (0.06%) TO \$294.18. THE AVERAGE ALLOTMENT PER PERSON INCREASED BY \$0.44 (0.34%) TO \$128.28.

COMPARING TO AUGUST 2009, AUGUST 2010 SUPPLEMENTAL NUTRITION ASSISTANCE HOUSEHOLDS INCREASED BY 67,813 (17.43%). PERSONS RECEIVING SUPPLEMENTAL NUTRITION ASSISTANCE INCREASED BY 128,001 (13.92%). TOTAL COUPON ISSUANCE INCREASED BY \$12,425,294 (10.19%). THE AVERAGE ALLOTMENT PER HOUSEHOLD DECREASED BY \$19.34 (6.17%). THE AVERAGE ALLOTMENT PER PERSON DECREASED BY \$4.35 (3.28%).

MEDICAL ASSISTANCE PROGRAM (MA) NEW TABLE INCLUDES PROP. 204 CATEGORIES

COMPARING TO JANUARY 2010, FEBRUARY 2010 TOTAL RECIPIENTS TOTAL RECIPIENTS DECREASED BY 6,946 (0.59%). SOBRA WOMEN AT 140% FPL DECREASED BY 248 (2.41%). SOBRA CHILDREN DECREASED BY 812 (1.23%). ADULTS W/O CHILD AT 100% INCREASED BY 446 (0.76%). FOSTER CARE INCREASED BY 69 (0.59%). 1931 AT 36% FPL DECREASED BY 4,919 (1.48%). EMERGENCY SERVICES DECREASED BY 5,083 (6.43%). INFANTS DECREASED BY 513 (1.02%). ADULT W/O CHILD AT 140% INCREASED BY 510 (0.33%). MEDICAL W/SPEND DOWN DECREASED BY 201 (3.10%). SOBRA WOMAN AT 100% INCREASED BY 99 (2.63%). SOBRA CHILD AT 100% INCREASED BY 902 (0.40%). TRANSITIONAL MEDICAL INCREASED BY 1,305 (3.04%). 1931 AT 100% INCREASED BY 1,355 (1.16%). YATI INCREASED BY 10 (3.02%). ALL OTHER CATEGORIES INCREASED BY 134 (0.51%).

COMPARING TO AUGUST 2009, AUGUST 2010 TOTAL RECIPIENTS TOTAL RECIPIENTS INCREASED BY 60,038 (5.25%). SOBRA WOMEN AT 140% FPL DECREASED BY 23 (0.21%). SOBRA CHILDREN INCREASED BY 2,195 (3.32%). ADULTS W/O CHILD AT 100% INCREASED BY 10,813 (21.14%). FOSTER CARE INCREASED BY 504 (4.35%). 1931 AT 36% FPL INCREASED BY 8,777 (2.63%). EMERGENCY SERVICES DECREASED BY 33,634 (37.37%). INFANTS DECREASED BY 1,969 (3.94%). ADULT W/O CHILD AT 140% INCREASED BY 31,822 (22.86%). MEDICAL W/SPEND DOWN INCREASED BY 1,099 (17.18%). SOBRA WOMAN AT 100% DECREASED BY 73 (1.89%). SOBRA CHILD AT 100% INCREASED BY 14,828 (6.98%). TRANSITIONAL MEDICAL INCREASED BY 7,724 (22.07%). 1931 AT 100% INCREASED BY 13,675 (12.57%). YATI INCREASED BY 55 (18.52%). ALL OTHER CATEGORIES INCREASED BY 2,572 (10.27%).

TANF SUMMARY

TABLES 1, 1A, 1B, & 1C: ARIZONA 1/

	AUGUST 2010								CHANGE FROM			AUGUST 2009		
	FAMILIES (CASES)	PERSONS (RECIP.)	ADULTS	CHILDREN	TOTAL PAYMENTS	AVERAGE	AVERAGE	TOTAL PAYMENTS	FAMILIES (CASES)	PERSONS (RECIP.)	TOTAL PAYMENTS	FAMILIES (CASES)	PERSONS (RECIP.)	TOTAL PAYMENTS
						PAYMENT/ CASE	PAYMENT/ RECIP.							
ARIZONA	22,430	50,231	13,662	36,569	4,757,045	212.08	94.70		(3,082)	(7,026)	(731,929)	(16,890)	(35,647)	(3,673,844)
REGION														
MARICOPA	14,087	32,363	8,671	23,692	3,001,631	213.08	92.75		(1,425)	(3,016)	(305,563)	(9,596)	(20,162)	(2,052,217)
NORTHERN	1,284	2,749	752	1,997	266,252	207.36	96.85		(1,018)	(2,812)	(292,011)	(1,641)	(4,027)	(426,589)
APACHE	47	87	22	65	8,787	186.96	101.00		(37)	(107)	(11,693)	42	79	8,140
COCONINO	102	214	47	167	21,202	207.86	99.07		(15)	(35)	(2,986)	(136)	(298)	(27,763)
MOHAVE	718	1,495	410	1,085	147,914	206.01	98.94		(92)	(182)	(20,202)	(508)	(1,011)	(100,751)
NAVAJO	417	953	273	680	88,349	211.87	92.71		(874)	(2,488)	(257,130)	(1,039)	(2,797)	(306,215)
CENTRAL	2,626	5,740	1,605	4,135	564,755	215.06	98.39		(265)	(490)	(52,521)	(1,992)	(4,162)	(415,234)
GILA	593	1,313	495	818	148,014	249.60	112.73		(16)	(5)	(1,813)	(110)	(185)	(24,308)
LA PAZ	96	215	55	160	20,059	208.95	93.30		(19)	(39)	(2,267)	(84)	(176)	(17,446)
PINAL	1,036	2,279	594	1,685	210,870	203.54	92.53		(119)	(236)	(24,994)	(954)	(2,133)	(205,263)
YAVAPAI	352	693	154	539	70,222	199.49	101.33		(52)	(84)	(9,893)	(358)	(677)	(66,573)
YUMA	549	1,240	307	933	115,590	210.55	93.22		(59)	(126)	(13,554)	(486)	(991)	(101,644)
SOUTHERN	4,433	9,379	2,634	6,745	924,407	208.53	98.56		(374)	(708)	(81,834)	(3,661)	(7,296)	(779,804)
COCHISE	402	798	179	619	82,874	206.15	103.85		(31)	(53)	(6,363)	(419)	(842)	(88,904)
GRAHAM	199	372	119	253	45,079	226.53	121.18		(14)	(34)	(3,358)	(96)	(205)	(20,413)
GREENLEE	18	41	10	31	3,840	213.33	93.66		(6)	(12)	(1,540)	(16)	(29)	(3,388)
PIMA	3,689	7,910	2,271	5,639	768,245	208.25	97.12		(315)	(596)	(68,804)	(2,989)	(5,925)	(636,915)
SANTA CRUZ	125	258	55	203	24,369	194.95	94.45		(8)	(13)	(1,769)	(141)	(295)	(30,184)

1/EXCLUDES: PRIOR MONTH NET TOTALS OF 1,404 CASES; 3,362 RECIPIENTS; \$265,522.
 GRANT DIVERSION TOTALS OF: 1,742 CASES; \$1,337,036.
 ZERO PAY TOTALS OF 3,505 CASES; 10,458 RECIPIENTS.
 TANF CHILD ONLY: 9,459 CASES; 15,836 RECIPIENTS; \$1,795,925.
 RRP: 390 CASES; 628 RECIPIENTS; \$79,993.

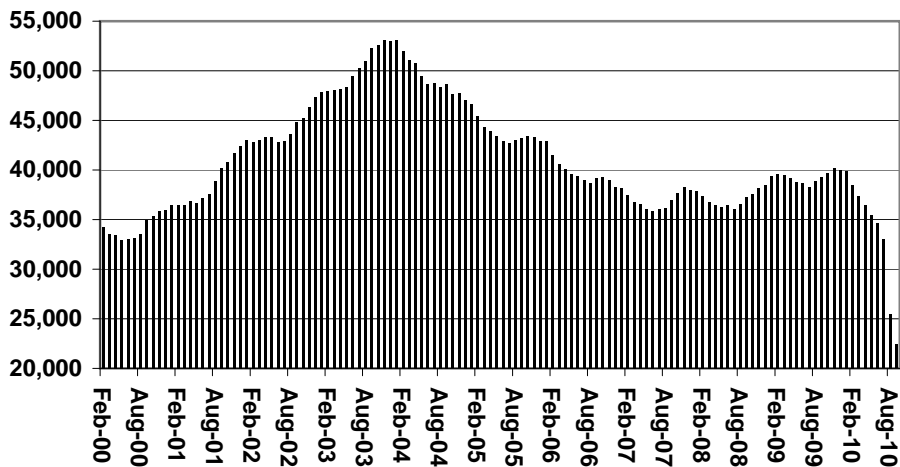
	CURRENT MO. CASES	CURRENT MO. RECIP.	CURRENT MO. DOLLARS	PRIOR MO. CASES	PRIOR MO. RECIP.	PRIOR MO. DOLLARS
PASQUA/YAQUI	276	767	\$82,258	15	40	\$4,637
WM APACHE	0	0	\$0	0	0	\$0
SALT RIVER	64	195	\$19,006	4	14	\$463
SAN CARLOS	542	1,192	\$141,291	28	67	\$5,516
HOPÍ	119	343	\$28,010	7	21	\$599
TOTAL	1,001	2,497	\$270,565	54	142	\$11,215

TANF SUMMARY

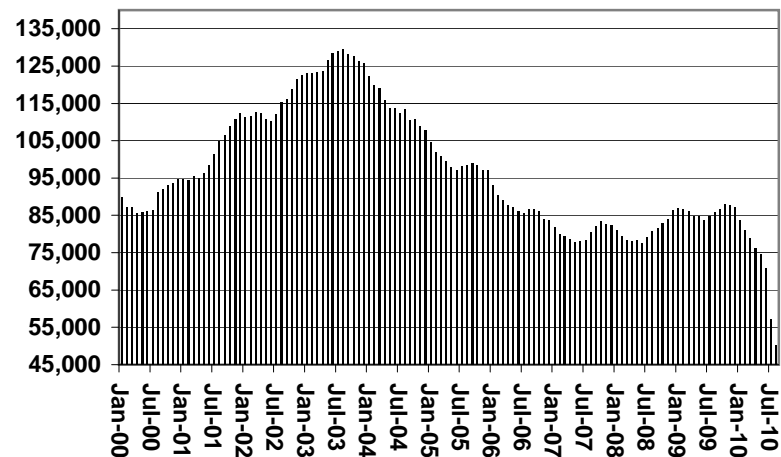
TABLES 1, 1A, 1B, & 1C

COMPARISON OF CASES, RECIPIENTS, PAYMENTS & AVERAGE PAYMENTS
FOR 2000, 2001, 2002, 2003, 2004, 2005, 2006, 2007, 2008, 2009, & 2010

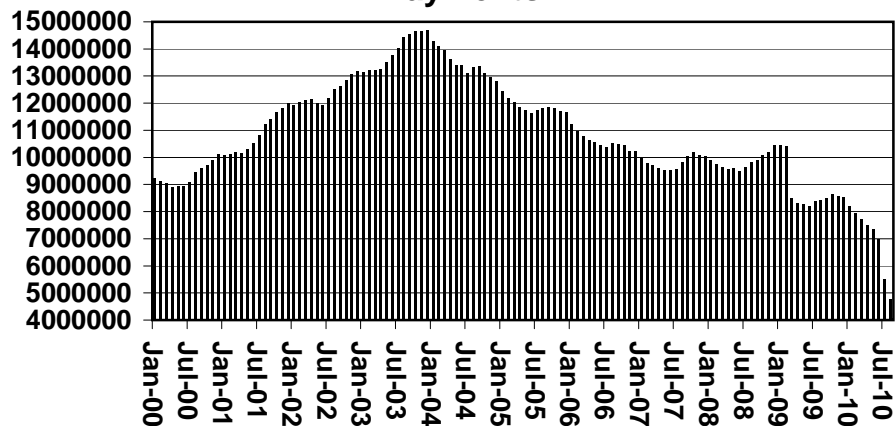
Cases



Recipients



Payments



Average Payments Per Recipient

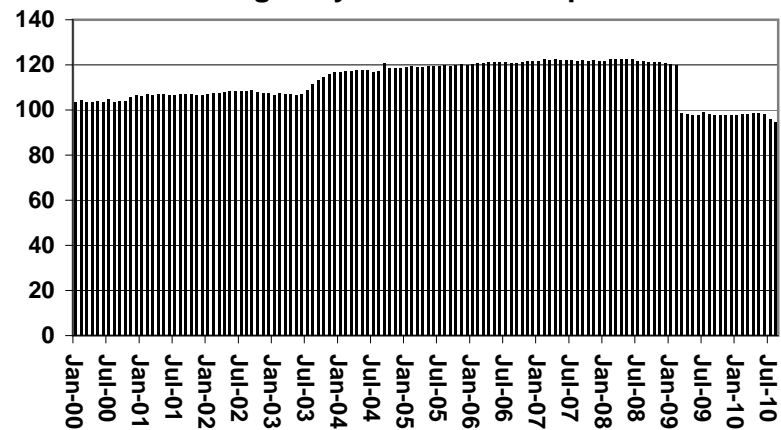


TABLE 1
CASH ASSISTANCE: ARIZONA 1/

	AUGUST 2010							CHANGE FROM			AUGUST 2009		
	FAMILIES (CASES)	(RECIP.)	ADULTS	CHILDREN	TOTAL PAYMENTS	AVERAGE PAYMENT/ CASE	AVERAGE PAYMENT/ RECIP.	FAMILIES (CASES)	PERSONS (RECIP.)	TOTAL PAYMENTS	FAMILIES (CASES)	PERSONS (RECIP.)	TOTAL PAYMENTS
	ARIZONA	21,186	46,591	12,359	34,232	4,534,439	214.03	97.32	(2,993)	(6,785)	(717,077)	(15,723)	(32,358)
REGION													
MARICOPA	13,225	29,809	7,807	22,002	2,844,578	215.09	95.43	(1,369)	(2,860)	(295,990)	(8,881)	(18,220)	(1,907,739)
NORTHERN	1,237	2,631	705	1,926	259,875	210.08	98.77	(1,014)	(2,804)	(291,274)	(1,576)	(3,824)	(413,139)
APACHE	44	81	21	60	8,560	194.55	105.68	(38)	(109)	(11,774)	41	77	8,012
COCONINO	100	210	45	165	21,103	211.03	100.49	(16)	(37)	(2,995)	(130)	(280)	(26,299)
MOHAVE	685	1,409	375	1,034	143,296	209.19	101.70	(87)	(174)	(19,154)	(480)	(919)	(95,080)
NAVAJO	408	931	264	667	86,916	213.03	93.36	(873)	(2,484)	(257,351)	(1,007)	(2,702)	(299,772)
CENTRAL	2,516	5,422	1,470	3,952	545,136	216.67	100.54	(145)	(265)	(28,073)	(1,053)	(2,205)	(227,200)
GILA	582	1,283	482	801	146,744	252.14	114.38	(17)	(8)	(1,582)	(106)	(182)	(24,022)
LA PAZ	89	195	46	149	18,435	207.13	94.54	(16)	(38)	(2,704)	(82)	(171)	(17,169)
PINAL	988	2,129	529	1,600	201,721	204.17	94.75	(112)	(219)	(23,787)	(865)	(1,852)	(186,009)
YAVAPAI	338	657	142	515	68,173	201.70	103.76	(44)	(63)	(8,856)	(325)	(607)	(63,027)
YUMA	519	1,158	271	887	110,063	212.07	95.05	(61)	(126)	(13,811)	(463)	(923)	(97,255)
SOUTHERN	4,208	8,729	2,377	6,352	884,850	210.28	101.37	(360)	(667)	(79,073)	(3,425)	(6,579)	(725,993)
COCHISE	386	762	169	593	81,113	210.14	106.45	(29)	(50)	(5,711)	(399)	(783)	(84,472)
GRAHAM	197	366	117	249	45,025	228.55	123.02	(11)	(29)	(3,004)	(86)	(182)	(19,275)
GREENLEE	18	41	10	31	3,840	213.33	93.66	(6)	(12)	(1,540)	(16)	(29)	(3,388)
PIMA	3,488	7,312	2,030	5,282	730,980	209.57	99.97	(307)	(564)	(67,083)	(2,790)	(5,318)	(589,856)
SANTA CRUZ	119	248	51	197	23,892	200.77	96.34	(7)	(12)	(1,735)	(134)	(267)	(29,002)

1/EXCLUDES: PRIOR MONTH NET TOTALS OF: 788 CASES; 1,868 RECIPIENTS; \$203,647.
GRANT DIVERSION TOTALS OF: 1,742 CASES; \$1,337,036.
ZERO PAY TOTALS OF 3,478 CASES; 10,342 RECIPIENTS.

CASES WITH GRANT UNDER \$100 (SEE TABLE 1B).

	CURRENT MO. CASES	CURRENT MO. RECIP.	CURRENT MO. DOLLARS	PRIOR MO. CASES	PRIOR MO. RECIP.	PRIOR MO. DOLLARS
PASQUA/YAQUI	269	741	\$79,840	15	40	\$4,637
WM APACHE	0	0	\$0	0	0	\$0
SALT RIVER	64	195	\$19,006	4	14	\$463
SAN CARLOS	542	1,192	\$141,291	28	67	\$5,516
HOPI	119	343	\$28,010	7	21	\$599
TOTAL	994	2,471	\$268,147	54	142	\$11,215

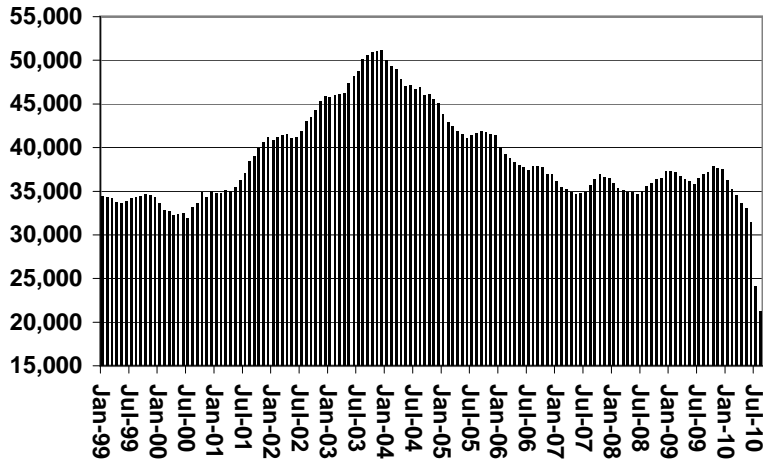
CHART 1

CASH ASSISTANCE PROGRAM

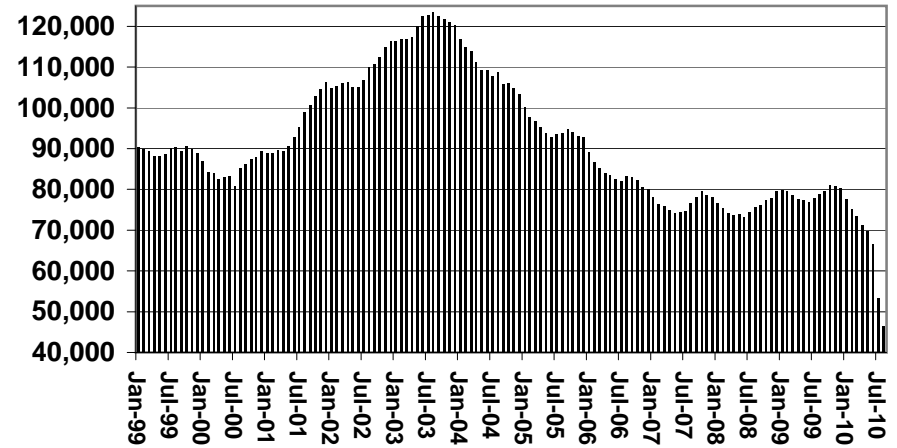
COMPARISON OF CASES, RECIPIENTS, PAYMENTS & AVERAGE PAYMENTS

FOR 1999, 2000, 2001, 2002, 2003, 2004, 2005, 2006, 2007, 2008, 2009, & 2010

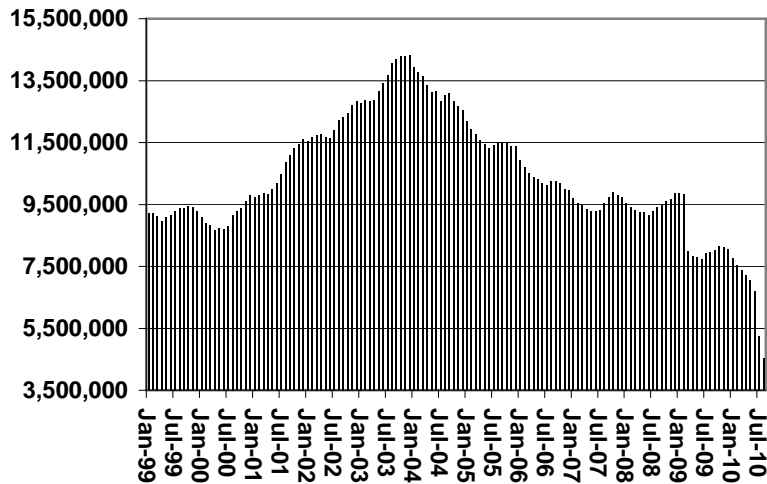
Cases



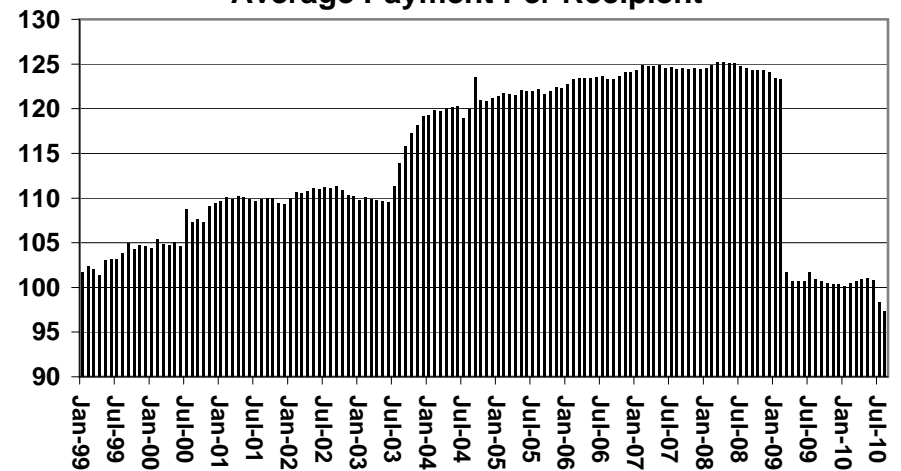
Recipients



Payments



Average Payment Per Recipient



**TABLE 1A
CA-UP**

CASH ASSISTANCE UNEMPLOYED PARENT PROGRAM: ARIZONA 1

	AUGUST 2010							CHANGE FROM			AUGUST 2009		
	FAMILIES (CASES)	PERSONS (RECIP.)	ADULTS	CHILDREN	TOTAL PAYMENTS	AVERAGE	AVERAGE	FAMILIES (CASES)	PERSONS (RECIP.)	TOTAL PAYMENTS	FAMILIES (CASES)	PERSONS (RECIP.)	TOTAL PAYMENTS
						PAYMENT/ CASE	PAYMENT/ RECIP.						
ARIZONA	646	2,358	966	1,392	180,526	279.45	76.56	(39)	(133)	(11,160)	(756)	(2,555)	(213,302)
REGION													
MARICOPA	465	1,669	649	1,020	129,903	279.36	77.83	(22)	(74)	(6,849)	(480)	(1,526)	(130,583)
NORTHERN	17	52	30	22	4,036	237.41	77.62	(1)	(8)	(784)	(36)	(141)	(12,047)
APACHE	0	0	0	0	0	0.00	0.00	0	0	0	0	0	0
COCONINO	0	0	0	0	0	0.00	0.00	0	0	0	(4)	(15)	(1,283)
MOHAVE	13	41	24	17	3,347	257.46	81.63	(1)	(6)	(673)	(14)	(61)	(4,713)
NAVAJO	4	11	6	5	689	172.25	62.64	0	(2)	(111)	(18)	(65)	(6,051)
CENTRAL	57	218	103	115	15,712	275.65	72.07	(1)	(3)	(464)	(67)	(244)	(18,164)
GILA	3	10	6	4	828	276.00	82.80	(1)	(5)	(392)	(1)	(6)	(58)
LA PAZ	4	15	7	8	1,283	320.75	85.53	2	7	613	(1)	(1)	(158)
PINAL	29	116	54	62	7,652	263.86	65.97	(2)	(5)	(685)	(65)	(237)	(17,948)
YAVAPAI	4	18	8	10	1,454	363.50	80.78	(2)	(7)	(467)	(10)	(28)	(2,142)
YUMA	17	59	28	31	4,495	264.41	76.19	3	9	539	(10)	(43)	(3,097)
SOUTHERN	107	419	184	235	30,875	288.55	73.69	(16)	(50)	(3,135)	(153)	(573)	(47,269)
COCHISE	3	12	4	8	971	323.67	80.92	(3)	(8)	(566)	(9)	(39)	(3,220)
GRAHAM	0	0	0	0	0	0.00	0.00	(1)	(4)	(211)	(2)	(6)	(556)
GREENLEE	0	0	0	0	0	0.00	0.00	0	0	0	0	0	0
PIMA	104	407	180	227	29,904	287.54	73.47	(12)	(38)	(2,358)	(138)	(511)	(42,464)
SANTA CRUZ	0	0	0	0	0	0.00	0.00	0	0	0	(4)	(17)	(1,029)

1/EXCLUDES: PRIOR MONTH NET TOTALS OF: 81 CASES; 314 RECIPIENTS; \$31,742.
GRANT DIVERSION TOTALS OF: 0 CASES; \$0.
ZERO PAY TOTALS OF 27 CASES; 116 RECIPIENTS.

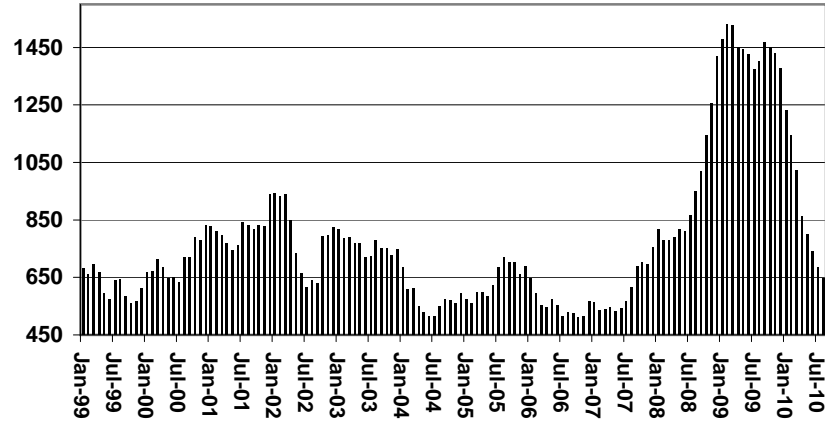
	CURRENT MO. CASES	CURRENT MO. RECIP.	CURRENT MO. DOLLARS	PRIOR MO. CASES	PRIOR MO. RECIP	PRIOR MO. DOLLARS
PASQUAYQUI	7	26	\$2,418	0	0	\$0
WM APACHE	0	0	\$0	0	0	\$0
SALT RIVER	0	0	\$0	0	0	\$0
SAN CARLOS	0	0	\$0	0	0	\$0
HOPI	0	0	\$0	0	0	\$0
TOTAL	7	26	\$2,418	0	0	\$0

CASES WITH GRANT UNDER \$100 (SEE TABLE 1C).

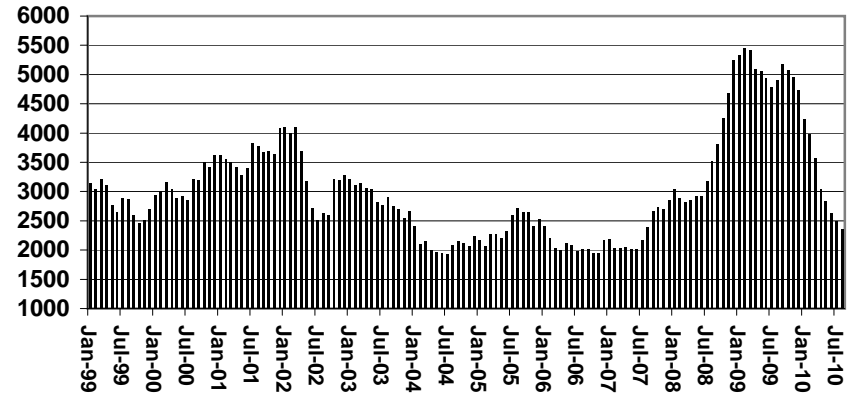
CHART 1A

CASH ASSISTANCE UNEMPLOYED PARENT PROGRAM COMPARISON OF CASES, RECIPIENTS, PAYMENTS & AVERAGE PAYMENTS FOR 1999, 2000, 2001, 2002, 2003, 2004, 2005, 2006, 2007, 2008, 2009, & 2010

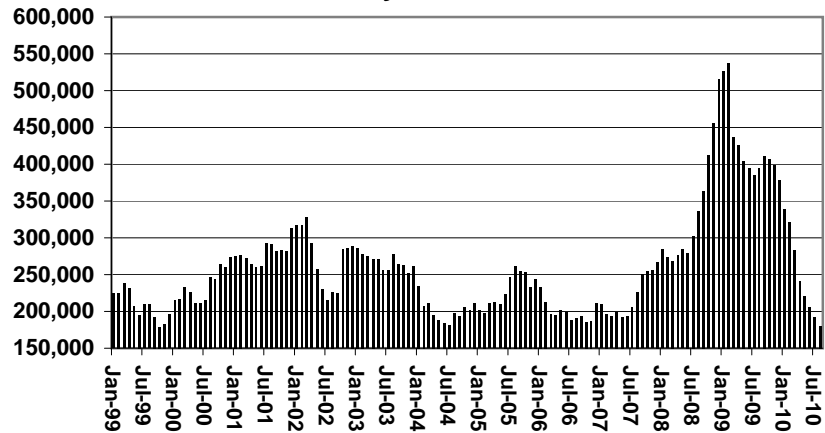
Cases



Recipients



Payments



Average Payment Per Recipient

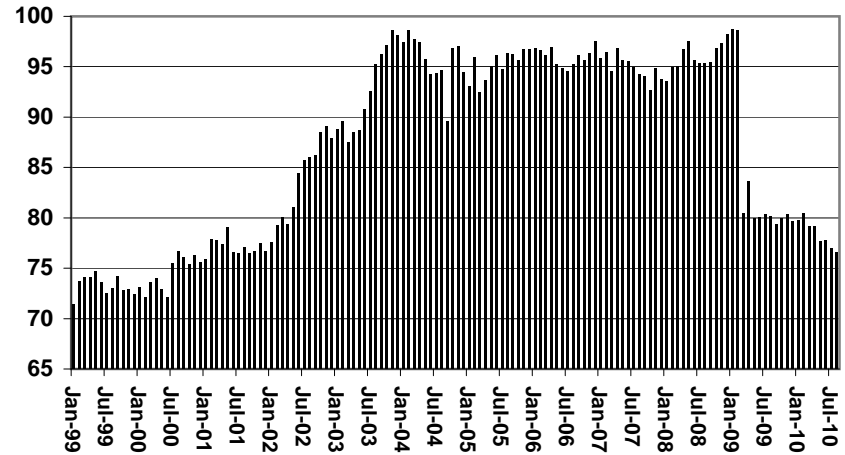


TABLE 1B 1/

**CASH ASSISTANCE: ARIZONA
CASES WITH GRANT UNDER \$100**

CHANGE FROM

	AUGUST 2010							JULY 2010			AUGUST 2009		
	FAMILIES (CASES)	PERSONS (RECIP.)	ADULTS	CHILDREN	TOTAL PAYMENTS	AVERAGE PAYMENT/ CASE	AVERAGE PAYMENT/ RECIP.	FAMILIES (CASES)	PERSONS (RECIP.)	TOTAL PAYMENTS	FAMILIES (CASES)	PERSONS (RECIP.)	TOTAL PAYMENTS
ARIZONA	578	1,217	322	895	41,149	71.19	33.81	(45)	(95)	(3,312)	(373)	(647)	(23,695)
REGION													
MARICOPA	381	833	206	627	26,378	69.23	31.67	(30)	(75)	(2,426)	(204)	(345)	(12,032)
NORTHERN	29	63	15	48	2,320	80.00	36.83	(4)	(3)	26	(29)	(62)	(1,367)
APACHE	3	6	1	5	227	75.67	37.83	1	2	81	1	2	128
COCONINO	2	4	2	2	99	49.50	24.75	1	2	9	(2)	(3)	(181)
MOHAVE	19	42	9	33	1,250	65.79	29.76	(5)	(5)	(396)	(14)	(31)	(922)
NAVAJO	5	11	3	8	744	148.80	67.64	(1)	(2)	332	(14)	(30)	(392)
CENTRAL	51	92	28	64	3,852	75.53	41.87	(14)	(30)	(1,335)	(61)	(104)	(4,001)
GILA	7	15	5	10	405	57.86	27.00	1	3	124	(3)	1	(177)
LA PAZ	3	5	2	3	341	113.67	68.20	(5)	(8)	(176)	(1)	(4)	(119)
PINAL	18	31	9	22	1,479	82.17	47.71	(4)	(7)	(468)	(24)	(43)	(1,259)
YAVAPAI	10	18	4	14	595	59.50	33.06	(6)	(14)	(570)	(21)	(38)	(1,234)
YUMA	13	23	8	15	1,032	79.38	44.87	0	(4)	(245)	(12)	(20)	(1,212)
SOUTHERN	117	229	73	156	8,599	73.50	37.55	3	13	423	(79)	(136)	(6,295)
COCHISE	13	24	6	18	790	60.77	32.92	1	5	(86)	(10)	(17)	(1,131)
GRAHAM	2	6	2	4	54	27.00	9.00	(2)	(1)	(143)	(7)	(14)	(531)
GREENLEE	0	0	0	0	0	0.00	0.00	0	0	0	0	0	0
PIMA	96	189	61	128	7,278	75.81	38.51	5	10	686	(59)	(94)	(4,480)
SANTA CRUZ	6	10	4	6	477	79.50	47.70	(1)	(1)	(34)	(3)	(11)	(153)

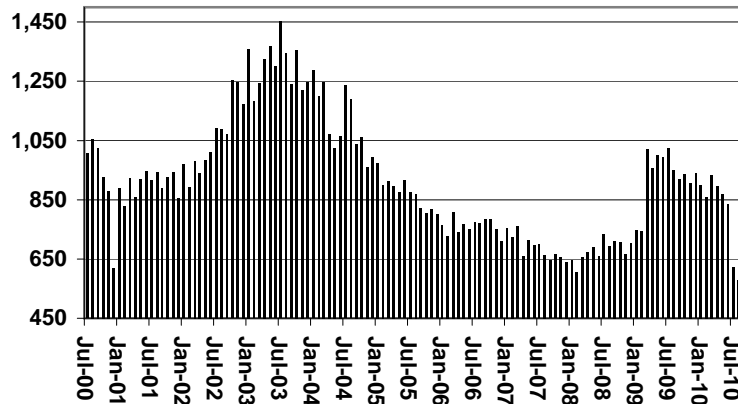
EXCLUDES: PRIOR MONTH NET TOTALS OF 502 CASES; 1,071 RECIPIENTS; \$28,431.

CHART 1B

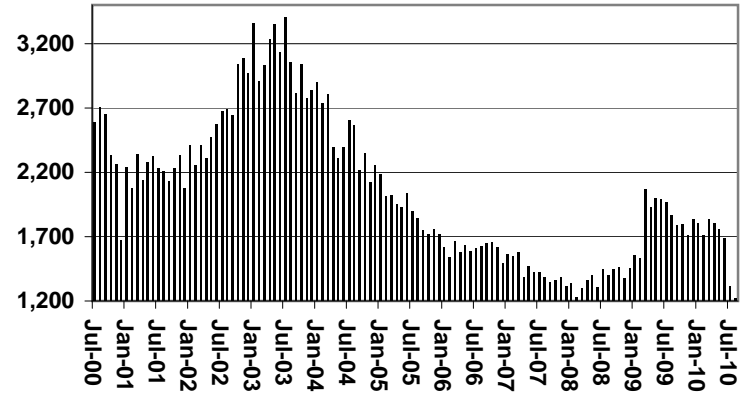
CASH ASSISTANCE PROGRAM CASES WITH GRANT UNDER \$100

FOR 1999, 2000, 2001, 2002, 2003, 2004, 2005, 2006, 2007, 2008, 2009, & 2010

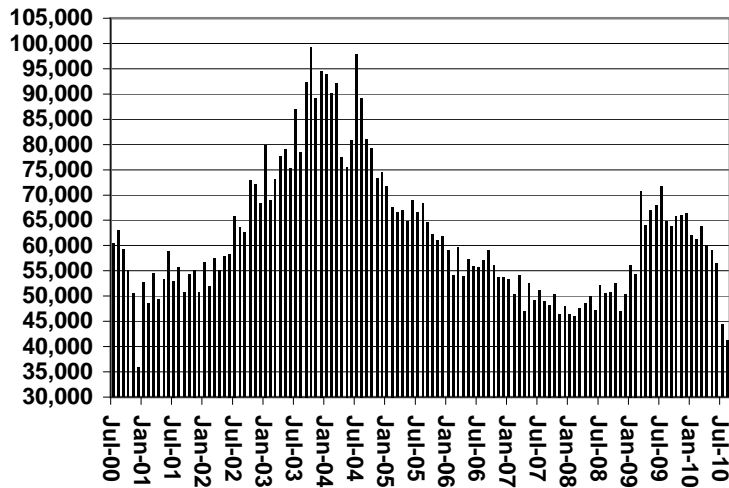
Cases



Recipients



Payments



Average Payment Per Recipient

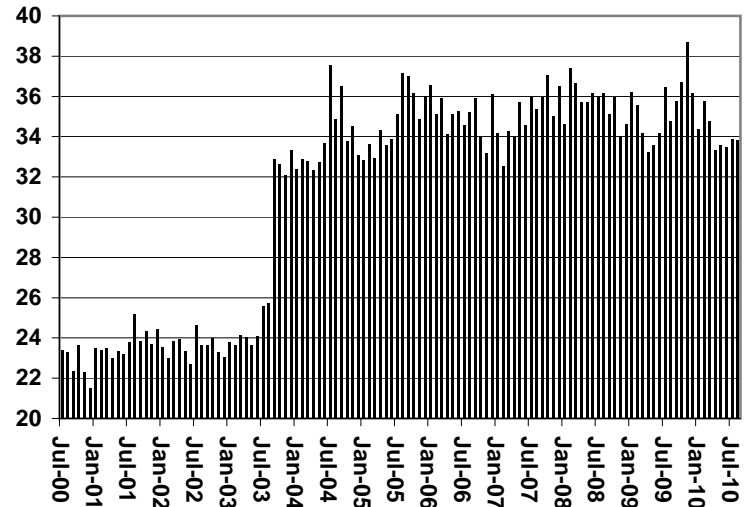


TABLE 1C 1/

**CASH ASSISTANCE UNEMPLOYED PARENT PROGRAM: ARIZONA
CASES WITH GRANT UNDER \$100**

	AUGUST 2010							CHANGE FROM			AUGUST 2009		
	FAMILIES (CASES)	PERSONS (RECIP.)	ADULTS	CHILDREN	TOTAL PAYMENTS	AVERAGE	AVERAGE	FAMILIES (CASES)	PERSONS (RECIP.)	TOTAL PAYMENTS	FAMILIES (CASES)	PERSONS (RECIP.)	TOTAL PAYMENTS
						PAYMENT/ CASE	PAYMENT/ RECIP.						
ARIZONA	20	65	15	50	931	46.55	14.32	(5)	(20)	(488)	(38)	(87)	(2,494)
REGION													
MARICOPA	16	52	9	43	772	48.25	14.85	(4)	(14)	(406)	(31)	(71)	(1,863)
NORTHERN	1	3	2	1	21	21.00	7.00	1	3	21	0	0	(36)
APACHE	0	0	0	0	0	0.00	0.00	0	0	0	0	0	0
COCONINO	0	0	0	0	0	0.00	0.00	0	0	0	0	0	0
MOHAVE	1	3	2	1	21	21.00	7.00	1	3	21	0	0	(36)
NAVAJO	0	0	0	0	0	0.00	0.00	0	0	0	0	0	0
CENTRAL	2	8	4	4	55	27.50	6.88	(1)	(5)	(54)	(3)	(8)	(348)
GILA	1	5	2	3	37	37.00	7.40	1	5	37	0	2	(51)
LA PAZ	0	0	0	0	0	0.00	0.00	0	0	0	0	0	0
PINAL	1	3	2	1	18	18.00	6.00	(1)	(5)	(54)	0	(1)	(47)
YAVAPAI	0	0	0	0	0	0.00	0.00	0	0	0	(2)	(4)	(170)
YUMA	0	0	0	0	0	0.00	0.00	(1)	(5)	(37)	(1)	(5)	(80)
SOUTHERN	1	2	0	2	83	83.00	41.50	(1)	(4)	(49)	(4)	(8)	(247)
COCHISE	0	0	0	0	0	0.00	0.00	0	0	0	(1)	(3)	(81)
GRAHAM	0	0	0	0	0	0.00	0.00	0	0	0	(1)	(3)	(51)
GREENLEE	0	0	0	0	0	0.00	0.00	0	0	0	0	0	0
PIMA	1	2	0	2	83	83.00	41.50	(1)	(4)	(49)	(2)	(2)	(115)
SANTA CRUZ	0	0	0	0	0	0.00	0.00	0	0	0	0	0	0

EXCLUDES: PRIOR MONTH NET TOTALS OF 33 CASES; 109 RECIPIENTS; \$1,702.

CHART 1C

CASH ASSISTANCE UNEMPLOYED PARENT PROGRAM

CASES WITH GRANT UNDER \$100

FOR 1999, 2000, 2001, 2002, 2003, 2004, 2005, 2006, 2007, 2008, 2009, & 2010

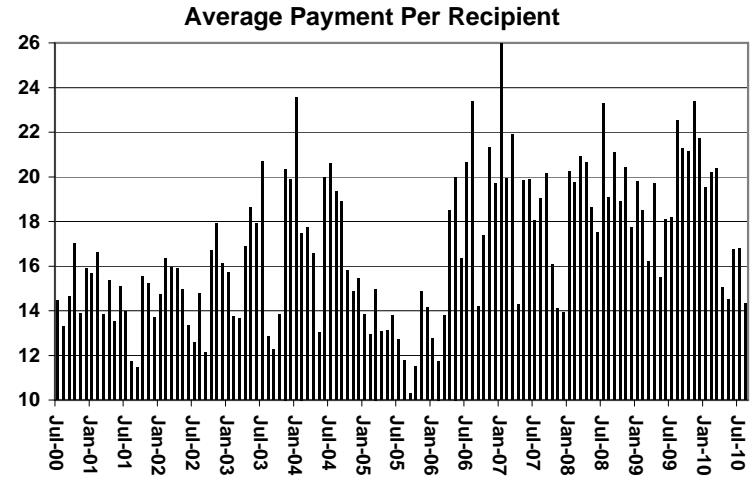
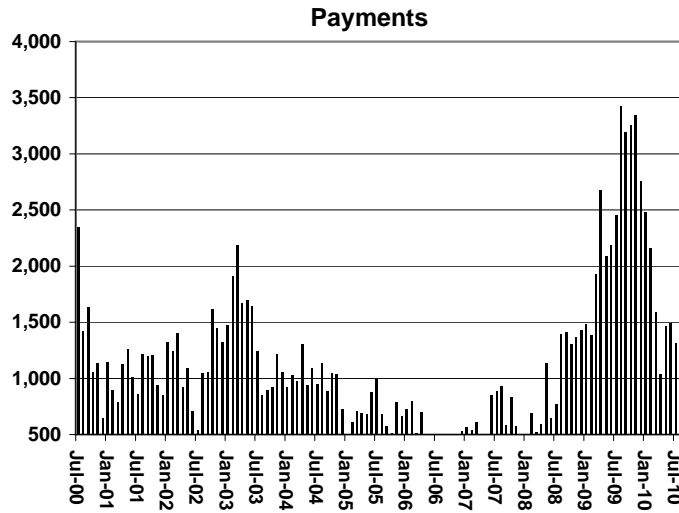
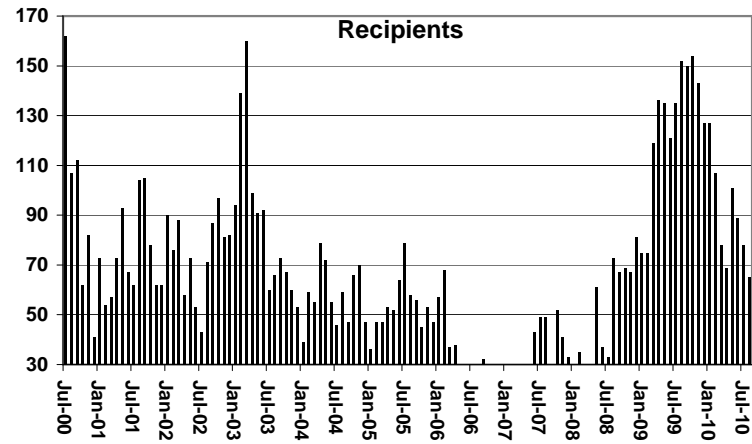
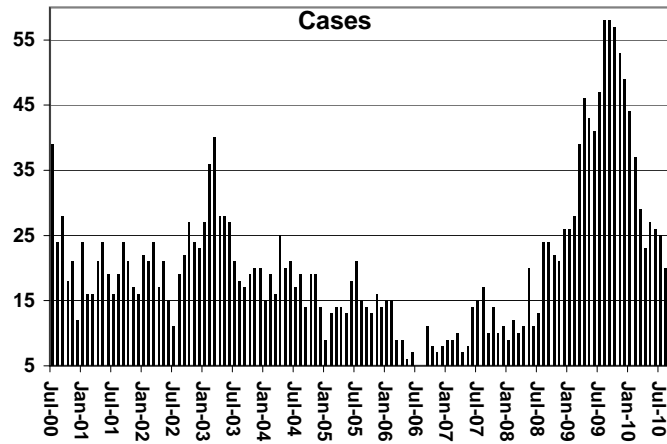


TABLE 4
TUBERCULOSIS CONTROL: ARIZONA 1/

	AUGUST 2010						CHANGE FROM					
							JULY 2010			AUGUST 2009		
	NUMBER OF CASES	PERSONS (RECIP.)	TOTAL PAYMENTS	AVERAGE PAYMENT/ CASE	AVERAGE PAYMENT/ RECIP.		NUMBER OF CASES	PERSONS (RECIP.)	TOTAL PAYMENTS	NUMBER OF CASES	PERSONS (RECIP.)	TOTAL PAYMENTS
ARIZONA	1	1	173	173.00	173.00	0	0	0	(1)	(1)	(108)	
REGION												
MARICOPA	1	1	173	173.00	173.00	0	0	0	0	0	0	
NORTHERN	0	0	0	0.00	0.00	0	0	0	0	0	0	
APACHE	0	0	0	0.00	0.00	0	0	0	0	0	0	
COCONINO	0	0	0	0.00	0.00	0	0	0	0	0	0	
MOHAVE	0	0	0	0.00	0.00	0	0	0	0	0	0	
NAVAJO	0	0	0	0.00	0.00	0	0	0	0	0	0	
CENTRAL	0	0	0	0.00	0.00	0	0	0	0	0	0	
GILA	0	0	0	0.00	0.00	0	0	0	0	0	0	
LA PAZ	0	0	0	0.00	0.00	0	0	0	0	0	0	
PINAL	0	0	0	0.00	0.00	0	0	0	0	0	0	
YAVAPAI	0	0	0	0.00	0.00	0	0	0	0	0	0	
YUMA	0	0	0	0.00	0.00	0	0	0	0	0	0	
SOUTHERN	0	0	0	0.00	0.00	0	0	0	(1)	(1)	(108)	
COCHISE	0	0	0	0.00	0.00	0	0	0	(1)	(1)	(108)	
GRAHAM	0	0	0	0.00	0.00	0	0	0	0	0	0	
GREENLEE	0	0	0	0.00	0.00	0	0	0	0	0	0	
PIMA	0	0	0	0.00	0.00	0	0	0	0	0	0	
SANTA CRUZ	0	0	0	0.00	0.00	0	0	0	0	0	0	

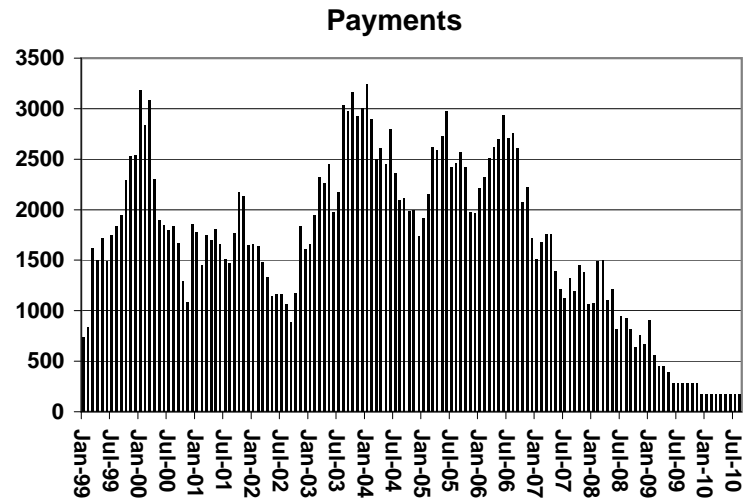
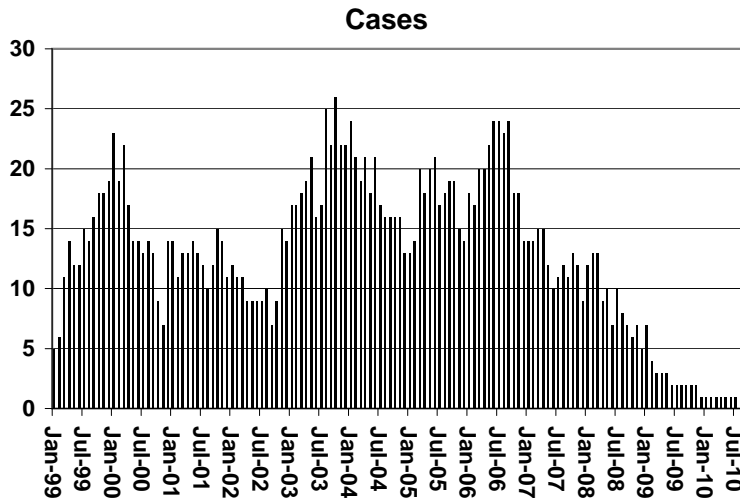
1/EXCLUDES: PRIOR MONTH NET TOTALS OF : 0 CASES; 0 RECIPIENTS; \$0.

CHART 4

TUBERCULOSIS CONTROL PROGRAM

COMPARISON OF CASES, PAYMENTS & AVERAGE PAYMENTS

FOR 1999, 2000, 2001, 2002, 2003, 2004, 2005, 2006, 2007, 2008, 2009, & 2010



Average Payment Per Case

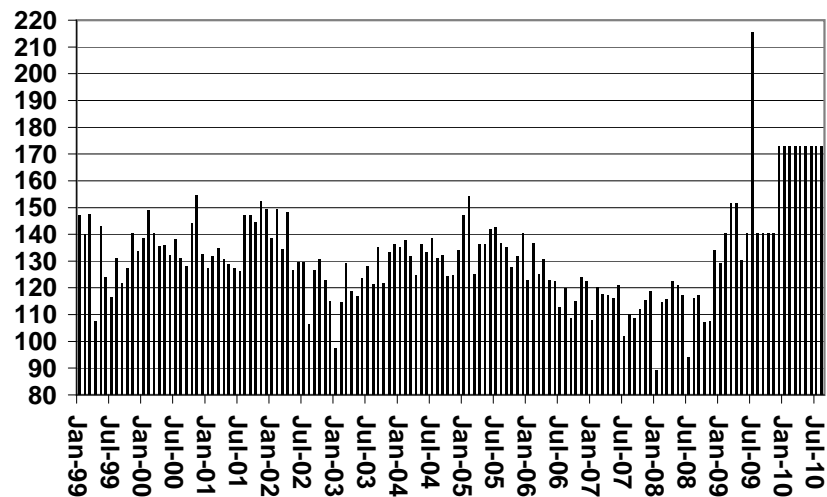


TABLE 6

SUPPLEMENTAL NUTRITION ASSISTANCE PROGRAM: ARIZONA 1

CHANGE FROM

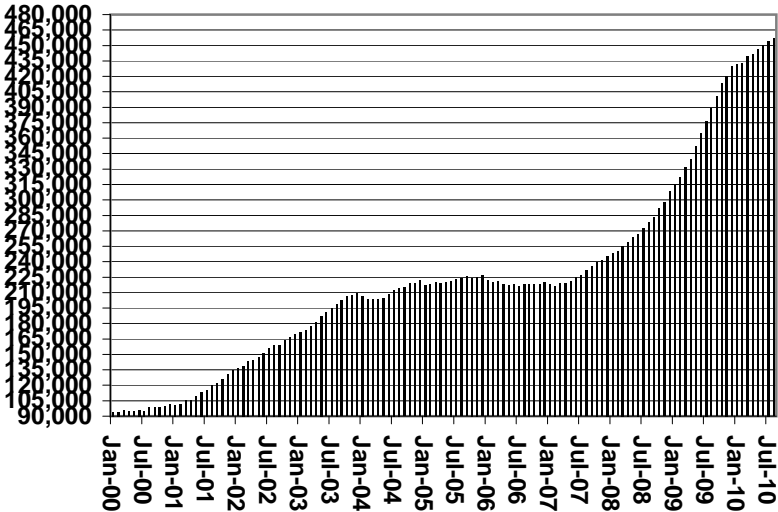
	AUGUST 2010							JULY 2010			AUGUST 2009		
	HOUSEHOLDS	PERSONS	ADULTS	CHILDREN	TOTAL PAYMENTS ISSUANCE	AVERAGE PAYMT./ HOUSEHOLD	AVERAGE PAYMT./ PERSON	HOUSEHOLDS	PERSONS	TOTAL PAYMENTS ISSUANCE	HOUSEHOLDS	PERSONS	TOTAL PAYMENTS ISSUANCE
ARIZONA	456,910	1,047,779	539,855	507,924	134,413,577	294.18	128.28	2,552	2,839	825,280	67,813	128,001	12,425,294
REGION													
MARICOPA	248,140	569,177	275,668	293,509	73,280,574	295.32	128.75	279	(916)	108,579	40,686	78,179	7,010,670
NORTHERN	52,295	127,656	71,260	56,396	16,163,092	309.08	126.61	353	178	118,929	6,765	12,613	1,480,484
APACHE	9,836	27,551	14,742	12,809	3,445,733	350.32	125.07	70	(111)	(891)	3,161	7,114	879,804
COCONINO	9,544	23,857	12,664	11,193	2,985,599	312.82	125.15	(9)	89	9,934	1,163	700	79,848
MOHAVE	20,136	42,621	25,593	17,028	5,449,590	270.64	127.86	213	246	60,771	3,573	8,834	986,634
NAVAJO	12,779	33,627	18,261	15,366	4,282,170	335.09	127.34	79	(46)	49,115	(1,132)	(4,035)	(465,802)
CENTRAL	59,441	140,508	76,222	64,286	17,762,176	298.82	126.41	816	1,696	291,718	7,657	14,794	1,606,500
GILA	5,891	12,784	7,515	5,269	1,693,168	287.42	132.44	55	123	17,032	886	1,468	179,302
LA PAZ	1,970	4,060	2,354	1,706	530,839	269.46	130.75	48	76	14,839	264	453	48,919
PINAL	21,064	51,909	27,005	24,904	6,661,692	316.26	128.33	186	300	35,450	1,941	3,417	281,197
YAVAPAI	14,384	29,115	17,409	11,706	3,668,031	255.01	125.98	136	149	37,110	2,470	4,431	457,653
YUMA	16,132	42,640	21,939	20,701	5,208,446	322.86	122.15	391	1,048	187,287	2,096	5,025	639,429
SOUTHERN	97,034	210,438	116,705	93,733	27,207,735	280.39	129.29	1,104	1,881	306,054	13,216	23,407	2,447,070
COCHISE	10,121	21,955	12,425	9,530	2,755,764	272.28	125.52	86	111	28,552	996	1,968	212,290
GRAHAM	3,303	7,734	4,303	3,431	999,733	302.67	129.26	13	7	(1,382)	512	894	139,287
GREENLEE	502	1,111	638	473	138,633	276.16	124.78	(7)	(22)	(4,156)	(22)	(179)	(15,084)
PIMA	78,884	168,246	93,586	74,660	21,941,133	278.14	130.41	977	1,650	266,016	11,608	20,441	2,111,508
SANTA CRUZ	4,224	11,392	5,753	5,639	1,372,472	324.92	120.48	35	135	17,024	122	283	(931)

1/EXCLUDES: PRIOR MONTH NET TOTALS OF : 12,829 CASES; 30,608 RECIPIENTS; \$2,176,525.
 AGED CANCELATIONS: 8,444 CASES; 11,725 RECIPIENTS; 503,704.
 SNAP COUPON CONVERSIONS: 0 CASES; 0 RECIPIENTS; \$0.
 SNAP CHILD ONLY: 37,529 CASES; 90,197 RECIPIENTS; \$11,859,073.
 SNAP ZERO PAY: 12,935 CASES; 52,457 RECIPIENTS.

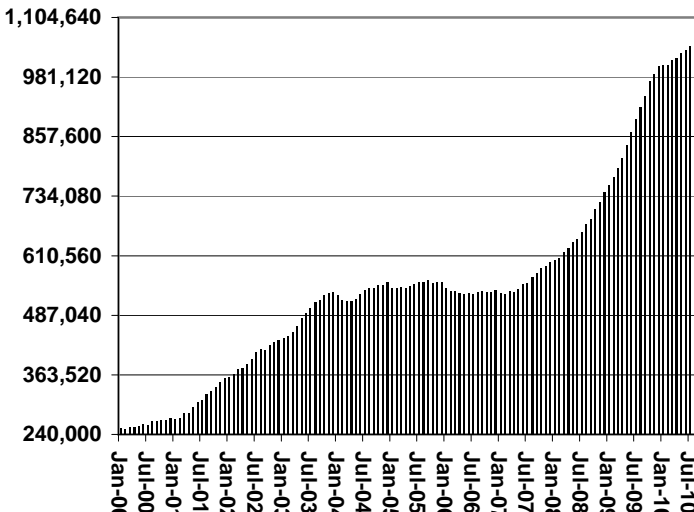
CHART 6

SUPPLEMENTAL NUTRITION ASSISTANCE PROGRAM (SNAP) COMPARISON OF HOUSEHOLDS, RECIPIENTS, PAYMENTS & AVERAGE PAYMENTS FOR 1999, 2000, 2001, 2002, 2003, 2004, 2005, 2006, 2007, 2008, 2009, & 2010

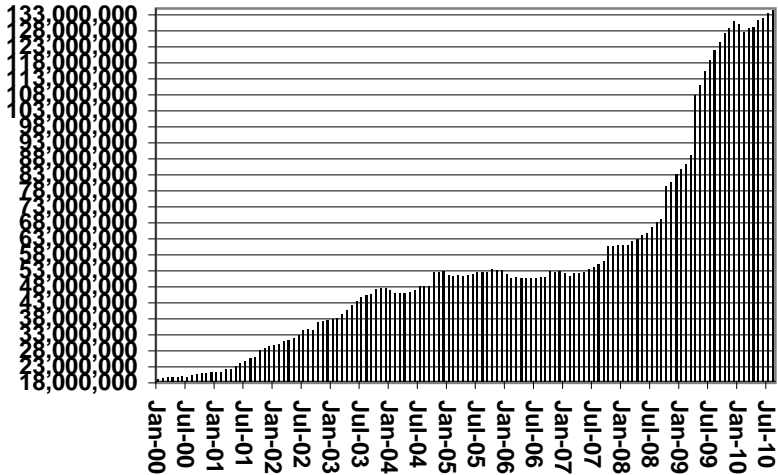
Households



Recipients



Payments



Average Payment Per Household

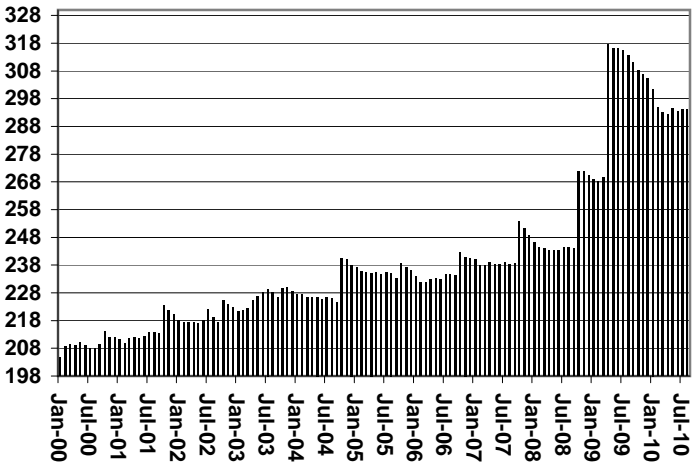


TABLE 7A
MEDICAL ASSISTANCE PROGRAM
RECIPIENTS

AUGUST 2010

	SOBRA WOMAN 133% FPL	SOBRA CHILD	ADULT W/O CHILD 100% FPL	FOSTER CARE	1931 36% FPL	FEDERAL EMERGENCY SERVICES	INFANTS	ADULT W/O CHILD 40% FPL	MEDICAL W/SPEND DOWN	SOBRA WOMAN 100% FPL	SOBRA CHILD 100% FPL	TRANSITIONAL MEDICAL T1 - T4	1931 100% FPL	YATI	OTHER	TOTAL CASES
ARIZONA	10,826	68,429	61,598	12,077	340,725	56,329	47,994	169,514	7,400	3,743	227,343	43,350	121,311	349	27,654	1,198,642
REGION																
MARICOPA	5,813	38,463	30,002	6,318	187,687	44,136	28,853	86,133	4,055	1,910	132,975	23,502	62,528	194	14,247	666,816
NORTHERN	1,198	7,653	7,373	633	45,102	1,230	4,919	25,489	1,069	527	23,318	5,112	14,692	19	2,928	141,262
APACHE	209	1,530	1,030	40	11,673	97	965	5,732	148	105	4,293	816	2,703	0	391	29,732
COCONINO	275	1,441	1,558	127	8,662	347	1,087	4,742	178	104	5,017	1,130	3,051	10	414	28,143
MOHAVE	390	2,340	3,043	317	11,767	520	1,507	8,155	500	175	8,281	1,898	5,130	4	1,556	45,583
NAVAJO	324	2,342	1,742	149	13,000	266	1,360	6,860	243	143	5,727	1,268	3,808	5	567	37,804
CENTRAL	1,760	9,474	9,499	1,498	44,341	4,297	5,983	22,001	1,129	590	29,143	6,079	18,174	37	4,318	158,323
GILA	121	708	762	101	4,636	134	536	2,664	96	40	1,909	382	1,307	0	347	13,743
LA PAZ	51	243	270	17	1,297	131	130	868	22	9	728	201	411	0	154	4,532
PINAL	593	4,001	2,792	608	18,180	1,246	2,193	8,199	383	184	10,193	1,849	5,798	14	1,255	57,488
YAVAPAI	402	1,828	2,704	465	7,434	1,226	1,215	5,166	324	119	6,230	1,634	3,947	17	1,265	33,976
YUMA	593	2,694	2,971	307	12,794	1,560	1,909	5,104	304	238	10,083	2,013	6,711	6	1,297	48,584
SOUTHERN	2,055	12,839	14,724	3,628	63,595	6,666	8,239	35,891	1,147	716	41,907	8,657	25,917	99	6,161	232,241
COCHISE	236	1,270	1,683	242	6,913	444	828	3,252	156	78	4,244	992	2,771	5	855	23,969
GRAHAM	107	501	531	70	2,744	51	341	1,386	57	25	1,402	341	880	2	155	8,593
GREENLEE	20	54	74	8	445	6	54	192	6	4	229	57	128	2	37	1,316
PIMA	1,589	10,354	11,549	3,279	50,038	5,664	6,568	29,966	880	553	33,010	6,678	20,218	89	4,633	185,068
SANTA CRUZ	103	660	887	29	3,455	501	448	1,095	48	56	3,022	589	1,920	1	481	13,295

TABLE 7B
MEDICAL ASSISTANCE PROGRAM
RECIPIENTS

CHANGE FROM

JULY 2010

	SOBRA WOMAN 133% FPL	SOBRA CHILD	ADULT W/O CHILD 100% FPL	FOSTER CARE	1931 36% FPL	FEDERAL EMERGENCY SERVICES	INFANTS	ADULT W/O CHILD 40% FPL	MEDICAL W/SPEND DOWN	SOBRA WOMAN 100% FPL	SOBRA CHILD 100% FPL	TRANSITIONAL MEDICAL T1 - T4	1931 100% FPL	YATI	OTHER	TOTAL CASES
ARIZONA	305	740	367	66	4,774	(2,150)	(557)	3,312	80	(173)	(556)	(379)	364	16	148	6,357
REGION																
MARICOPA	112	513	101	58	1,371	(1,862)	(422)	1,395	(5)	(84)	(885)	(301)	6	0	80	77
NORTHERN	22	61	(43)	2	666	(90)	(53)	565	10	(27)	4	235	(111)	3	1	1,245
APACHE	24	7	25	0	165	(11)	(15)	173	(4)	(4)	(27)	54	(62)	0	(6)	319
COCONINO	(7)	23	(24)	(3)	83	(19)	(18)	45	(7)	(15)	82	65	57	2	3	267
MOHAVE	(8)	47	(23)	6	183	(41)	(35)	229	(9)	(9)	(58)	124	(75)	1	(4)	328
NAVAJO	13	(16)	(21)	(1)	235	(19)	15	118	30	1	7	(8)	(31)	0	8	331
CENTRAL	48	35	60	17	1,313	(61)	(11)	568	17	11	293	(235)	190	6	29	2,280
GILA	(1)	24	(2)	0	155	2	0	11	0	(9)	9	11	44	(1)	4	247
LA PAZ	5	13	(7)	1	15	3	(1)	28	(3)	2	5	33	(18)	0	2	78
PINAL	37	(37)	28	19	250	(23)	29	179	18	19	291	(72)	138	3	29	908
YAVAPAI	6	(22)	(2)	(3)	125	(61)	(34)	117	(14)	9	(27)	(21)	(15)	3	(1)	60
YUMA	1	57	43	0	768	18	(5)	233	16	(10)	15	(186)	41	1	(5)	987
SOUTHERN	123	131	249	(11)	1,424	(137)	(71)	784	58	(73)	32	(78)	279	7	38	2,755
COCHISE	20	5	3	(2)	95	(12)	(23)	74	7	4	39	(5)	54	1	8	268
GRAHAM	(2)	(5)	12	(3)	47	1	(11)	17	5	(6)	(12)	(22)	(1)	0	11	31
GREENLEE	4	(5)	6	0	12	0	(4)	7	(3)	(1)	(19)	(8)	(10)	0	(5)	(26)
PIMA	93	119	210	(6)	1,193	(104)	(24)	653	47	(72)	(2)	(56)	223	6	8	2,288
SANTA CRUZ	8	17	18	0	77	(22)	(9)	33	2	2	26	13	13	0	16	194

TABLE 7C
MEDICAL ASSISTANCE PROGRAM
RECIPIENTS

CHANGE FROM

AUGUST 2009

	SOBRA WOMAN 133% FPL	SOBRA CHILD	ADULT W/O CHILD 100% FPL	FOSTER CARE	1931 36% FPL	FEDERAL EMERGENCY SERVICES	INFANTS	ADULT W/O CHILD 40% FPL	MEDICAL W/SPEND DOWN	SOBRA WOMAN 100% FPL	SOBRA CHILD 100% FPL	TRANSITIONAL MEDICAL T1 - T4	3E 1931 100% FPL	YATI	OTHER	TOTAL CASES
ARIZONA	(23)	2,195	10,813	504	8,777	(33,634)	(1,969)	31,822	1,099	(73)	16,501	7,724	13,675	55	2,572	60,038
REGION																
MARICOPA	208	1,328	6,309	410	3,218	(26,657)	(682)	17,770	481	(81)	10,438	5,148	8,931	18	1,639	28,478
NORTHERN	(184)	279	1,089	52	2,826	(641)	(275)	5,268	298	55	2,531	104	1,608	6	222	13,238
APACHE	(16)	20	207	(2)	869	7	(33)	1,491	87	34	709	(200)	506	(2)	0	3,677
COCONINO	(87)	27	386	9	1,278	(184)	(79)	1,610	86	18	1,249	(97)	807	7	45	5,075
MOHAVE	(88)	151	356	34	482	(356)	(101)	1,356	63	(19)	479	231	281	2	157	3,028
NAVAJO	7	81	140	11	197	(108)	(62)	811	62	22	94	170	14	(1)	20	1,458
CENTRAL	48	374	1,208	53	2,100	(1,455)	(224)	3,042	202	(24)	1,331	753	1,015	8	291	8,722
GILA	(18)	11	77	7	130	(28)	(28)	252	(22)	(1)	(73)	15	(17)	0	38	343
LA PAZ	13	26	40	3	18	(38)	(32)	115	(6)	(5)	16	69	39	0	2	260
PINAL	35	228	482	8	642	(464)	(6)	1,064	138	(6)	902	286	563	(1)	53	3,924
YAVAPAI	(13)	23	418	15	288	(500)	(139)	603	26	(21)	496	295	230	6	193	1,920
YUMA	31	86	191	20	1,022	(425)	(19)	1,008	66	9	(10)	88	200	3	5	2,275
SOUTHERN	(95)	214	2,207	(11)	633	(4,881)	(788)	5,742	118	(23)	2,201	1,719	2,121	23	420	9,600
COCHISE	(32)	25	161	(19)	201	(206)	(76)	377	37	(11)	119	137	101	(2)	72	884
GRAHAM	1	30	15	(7)	176	(7)	(82)	237	8	(19)	(32)	73	(128)	1	17	283
GREENLEE	1	3	16	1	30	(3)	(6)	25	(3)	(7)	(29)	35	(21)	2	16	60
PIMA	(68)	85	1,943	19	182	(4,573)	(584)	4,964	74	9	2,149	1,271	2,107	21	261	7,860
SANTA CRUZ	3	71	72	(5)	44	(92)	(40)	139	2	5	(6)	203	62	1	54	513

CHART 7

MEDICAL ASSISTANCE PROGRAM

COMPARISON OF RECIPIENTS

FOR 1999, 2000, 2001, 2002, 2003, 2004, 2005, 2006, 2007, 2008, 2009, & 2010

Total Recipients

