



---

DEPARTMENT OF ECONOMIC SECURITY

---

*Your Partner For A Stronger Arizona*

State of Arizona

Department of Economic Security

Family Assistance Administration

Statistical Bulletin

September, 2010  
Phone: (602) 542-3678

<https://www.azdes.gov/appreports.aspx>

\*\*\*\* STATISTICAL BULLETIN \*\*\*\*  
ARIZONA DEPARTMENT OF ECONOMIC SECURITY  
FAMILY ASSISTANCE ADMINISTRATION  
BOX 6123, PHOENIX, ARIZONA 85005  
PHONE (602) 542-3678

SEPTEMBER 2010

THIS ISSUE OF THE STATISTICAL BULLETIN COMPARES SEPTEMBER 2010 DATA FOR EACH OF THE INDICATED PROGRAMS WITH THE INFORMATION FOR AUGUST 2010 AND SEPTEMBER 2009. STATEWIDE SUMMARIES OF ACTIVITY WITHIN EACH OF THE SPECIFIC PROGRAMS FOR THIS REPORT PERIOD ARE DISCUSSED BELOW. THE TABLES COMPARE CURRENT AND PRIOR MONTH DATA. DISTRICT AND COUNTY COMPARISONS ARE PROVIDED WITHIN THIS BULLETIN

TANF SUMMARY

COMPARING TO AUGUST 2010, SEPTEMBER 2010 CASES DECREASED BY 3,304 (14.73%) TO 19,126. RECIPIENTS DECREASED BY 6,920 (13.78%) TO 43,311. PAYMENTS DECREASED BY \$668,498 (14.05%) TO \$4,088,547. AVERAGE PAYMENT PER CASE INCREASED BY \$1.69 (0.80%) TO \$0.00. PAYMENT PER RECIPIENT DECREASED BY \$0.30 (0.32%) TO \$94.40.

COMPARING TO SEPTEMBER 2009, SEPTEMBER 2010 CASES DECREASED BY 20,513 (51.75%). RECIPIENTS DECREASED BY 43,438 (50.07%). TOTAL PAYMENTS DECREASED BY \$4,405,551 (51.87%). THE AVERAGE PAYMENT PER CASE DECREASED BY \$0.52 (0.24%). THE AVERAGE PAYMENT PER RECIPIENT DECREASED BY \$3.52 (3.59%).

CASH ASSISTANCE (CA)

COMPARING TO AUGUST 2010, SEPTEMBER 2010 CASES DECREASED BY 3,151 (14.87%) TO 18,035. RECIPIENTS DECREASED BY 6,555 (14.07%) TO 40,036. PAYMENTS DECREASED BY \$653,722 (14.42%) TO \$3,880,717. AVERAGE PAYMENT PER CASE INCREASED BY \$1.15 (0.54%) TO \$215.18. PAYMENT PER RECIPIENT DECREASED BY \$0.39 (0.40%) TO \$96.93.

COMPARING TO SEPTEMBER 2009, SEPTEMBER 2010 CASES DECREASED BY 19,160 (51.51%). RECIPIENTS DECREASED BY 39,594 (49.72%). TOTAL PAYMENTS DECREASED BY \$4,135,071 (51.59%). THE AVERAGE PAYMENT PER CASE DECREASED BY \$0.33 (0.15%). THE AVERAGE PAYMENT PER RECIPIENT DECREASED BY \$3.73 (3.71%).

CASH ASSISTANCE UNEMPLOYED PARENT PROGRAM (CA-UP)

COMPARING TO AUGUST 2010, SEPTEMBER 2010 CASES DECREASED BY 45 (6.97%) TO 601. RECIPIENTS DECREASED BY 136 (5.77%) TO 2,222. PAYMENTS DECREASED BY \$9,630 (5.33%) TO \$170,896. AVERAGE PAYMENT PER CASE INCREASED BY \$4.90 (1.75%) TO \$284.35. PAYMENT PER RECIPIENT INCREASED BY \$0.35 (0.46%) TO \$76.91.

COMPARING TO SEPTEMBER 2009, SEPTEMBER 2010 CASES DECREASED BY 865 (59.00%). RECIPIENTS DECREASED BY 2,962 (57.14%). TOTAL PAYMENTS DECREASED BY \$240,330 (58.44%). THE AVERAGE PAYMENT PER CASE INCREASED BY \$3.85 (1.37%). THE AVERAGE PAYMENT PER RECIPIENT DECREASED BY \$2.42 (3.05%).

CASH ASSISTANCE WITH GRANT UNDER \$100 (CA-MOE)

COMPARING TO AUGUST 2010, SEPTEMBER 2010 CASES DECREASED BY 116 (20.07%) TO 462. RECIPIENTS DECREASED BY 244 (20.05%) TO 973. PAYMENTS DECREASED BY \$5,625 (13.67%) TO \$35,524. AVERAGE PAYMENT PER CASE INCREASED BY \$5.70 (8.01%) TO \$76.89. AVERAGE PAYMENT PER RECIPIENT INCREASED BY \$2.70 (7.99%) TO \$36.51.

COMPARING TO SEPTEMBER 2009, SEPTEMBER 2010 CASES DECREASED BY 458 (49.78%). RECIPIENTS DECREASED BY 812 (45.49%). TOTAL PAYMENTS DECREASED BY \$28,366 (44.40%). THE AVERAGE PAYMENT PER CASE INCREASED BY \$7.44 (10.71%). THE AVERAGE PAYMENT PER RECIPIENT INCREASED BY \$0.72 (2.01%).

CASH ASSISTANCE UNEMPLOYED PARENT PROGRAM WITH GRANT UNDER \$100 (CA-UP-MOE) NEW PROGRAM STARTING 7/01

COMPARING TO AUGUST 2010, SEPTEMBER 2010 CASES INCREASED BY 8 (40.00%) TO 28. RECIPIENTS INCREASED BY 15 (23.08%) TO 80. PAYMENTS INCREASED BY \$479 (51.45%) TO \$1,410. AVERAGE PAYMENT PER CASE INCREASED BY \$3.81 (8.18%) TO \$50.36. PAYMENT PER RECIPIENT INCREASED BY \$3.31 (23.11%) TO \$17.63.

COMPARING TO SEPTEMBER 2009, SEPTEMBER 2010 CASES DECREASED BY 30 (51.72%). RECIPIENTS DECREASED BY 70 (7.52%). TOTAL PAYMENTS DECREASED BY \$1,784 (55.85%). THE AVERAGE PAYMENT PER CASE DECREASED BY \$4.71 (8.55%). THE AVERAGE PAYMENT PER RECIPIENT DECREASED BY \$3.66 (17.19%).

TUBERCULOSIS CONTROL PROGRAM (TC)

COMPARING TO AUGUST 2010, SEPTEMBER 2010 CASES INCREASED BY 0 (0.00%) TO 1. RECIPIENTS INCREASED BY 0 (0.00%) TO 1. PAYMENTS INCREASED BY \$0 (0.00%) TO \$173. AVERAGE PAYMENT PER CASE INCREASED BY \$40.77 (23.57%) TO \$213.77. AVERAGE PAYMENT PER RECIPIENT INCREASED BY \$0.00 (0.00%) TO \$173.00.

COMPARING TO SEPTEMBER 2009, SEPTEMBER 2010 CASES DECREASED BY 1 (50.00%). RECIPIENTS DECREASED BY 1 (50.00%). TOTAL PAYMENTS DECREASED BY \$108 (38.43%). THE AVERAGE PAYMENT PER CASE INCREASED BY \$73.27 (52.15%). THE AVERAGE PAYMENT PER RECIPIENT INCREASED BY \$32.50 (23.13%).

SUPPLEMENTAL NUTRITION ASSISTANCE PROGRAM (SNAP)

COMPARING TO AUGUST 2010, SEPTEMBER 2010 SUPPLEMENTAL NUTRITION ASSISTANCE HOUSEHOLDS DECREASED BY 443 (0.10%) TO 456,467. PERSONS RECEIVING SUPPLEMENTAL NUTRITION ASSISTANCE DECREASED BY 3,369 (0.32%) TO 1,044,410. TOTAL COUPON ISSUANCE DECREASED BY \$965,209 (0.72%) TO \$133,448,368. THE AVERAGE HOUSEHOLD ALLOTMENT DECREASED BY \$1.83 (0.62%) TO \$292.35. THE AVERAGE ALLOTMENT PER PERSON DECREASED BY \$0.51 (0.40%) TO \$127.77.

COMPARING TO SEPTEMBER 2009, SEPTEMBER 2010 SUPPLEMENTAL NUTRITION ASSISTANCE HOUSEHOLDS INCREASED BY 56,160 (14.03%). PERSONS RECEIVING SUPPLEMENTAL NUTRITION ASSISTANCE INCREASED BY 102,415 (10.87%). TOTAL COUPON ISSUANCE INCREASED BY \$8,952,502 (7.19%). THE AVERAGE ALLOTMENT PER HOUSEHOLD DECREASED BY \$18.65 (6.00%). THE AVERAGE ALLOTMENT PER PERSON DECREASED BY \$4.39 (3.32%).

MEDICAL ASSISTANCE PROGRAM (MA) NEW TABLE INCLUDES PROP. 204 CATEGORIES

COMPARING TO JANUARY 2010, FEBRUARY 2010 TOTAL RECIPIENTS TOTAL RECIPIENTS DECREASED BY 6,946 (0.59%). SOBRA WOMEN AT 140% FPL DECREASED BY 248 (2.41%). SOBRA CHILDREN DECREASED BY 812 (1.23%). ADULTS W/O CHILD AT 100% INCREASED BY 446 (0.76%). FOSTER CARE INCREASED BY 69 (0.59%). 1931 AT 36% FPL DECREASED BY 4,919 (1.48%). EMERGENCY SERVICES DECREASED BY 5,083 (6.43%). INFANTS DECREASED BY 513 (1.02%). ADULT W/O CHILD AT 140% INCREASED BY 510 (0.33%). MEDICAL W/SPEND DOWN DECREASED BY 201 (3.10%). SOBRA WOMAN AT 100% INCREASED BY 99 (2.63%). SOBRA CHILD AT 100% INCREASED BY 902 (0.40%). TRANSITIONAL MEDICAL INCREASED BY 1,305 (3.04%). 1931 AT 100% INCREASED BY 1,355 (1.16%). YATI INCREASED BY 10 (3.02%). ALL OTHER CATEGORIES INCREASED BY 134 (0.51%).

COMPARING TO SEPTEMBER 2009, SEPTEMBER 2010 TOTAL RECIPIENTS TOTAL RECIPIENTS INCREASED BY 37,756 (3.26%). SOBRA WOMEN AT 140% FPL INCREASED BY 415 (3.93%). SOBRA CHILDREN INCREASED BY 2,277 (3.44%). ADULTS W/O CHILD AT 100% INCREASED BY 9,058 (17.12%). FOSTER CARE INCREASED BY 540 (4.69%). 1931 AT 36% FPL INCREASED BY 4,200 (1.26%). EMERGENCY SERVICES DECREASED BY 36,240 (40.48%). INFANTS DECREASED BY 2,566 (5.12%). ADULT W/O CHILD AT 140% INCREASED BY 26,783 (18.62%). MEDICAL W/SPEND DOWN INCREASED BY 1,056 (16.98%). SOBRA WOMAN AT 100% DECREASED BY 203 (5.23%). SOBRA CHILD AT 100% INCREASED BY 11,439 (5.29%). TRANSITIONAL MEDICAL INCREASED BY 7,450 (20.75%). 1931 AT 100% INCREASED BY 11,060 (9.97%). YATI INCREASED BY 48 (15.48%). ALL OTHER CATEGORIES INCREASED BY 2,439 (9.65%).

## TANF SUMMARY

### TABLES 1, 1A, 1B, & 1C: ARIZONA 1/

	SEPTEMBER 2010							AUGUST 2010			CHANGE FROM SEPTEMBER 2009		
	FAMILIES (CASES)	PERSONS (RECIP.)	ADULTS	CHILDREN	TOTAL PAYMENTS	AVERAGE	AVERAGE	FAMILIES (CASES)	PERSONS (RECIP.)	TOTAL PAYMENTS	FAMILIES (CASES)	PERSONS (RECIP.)	TOTAL PAYMENTS
						PAYMENT/ CASE	PAYMENT/ RECIP.						
ARIZONA	19,126	43,311	11,927	31,384	4,088,547	213.77	94.40	(3,304)	(6,920)	(668,498)	(20,513)	(43,438)	(4,405,551)
REGION													
MARICOPA	11,772	27,340	7,388	19,952	2,528,591	214.80	92.49	(2,315)	(5,023)	(473,040)	(12,273)	(26,051)	(2,597,142)
NORTHERN	1,102	2,437	688	1,749	228,957	207.76	93.95	(182)	(312)	(37,295)	(1,827)	(4,406)	(465,841)
APACHE	42	81	21	60	8,254	196.52	101.90	(5)	(6)	(533)	41	76	7,862
COCONINO	73	170	42	128	15,931	218.23	93.71	(29)	(44)	(5,271)	(168)	(343)	(33,254)
MOHAVE	630	1,340	378	962	130,298	206.82	97.24	(88)	(155)	(17,616)	(594)	(1,171)	(116,530)
NAVAJO	357	846	247	599	74,474	208.61	88.03	(60)	(107)	(13,875)	(1,106)	(2,968)	(323,919)
CENTRAL	2,344	5,192	1,482	3,710	508,866	217.09	98.01	(282)	(548)	(55,889)	(2,263)	(4,696)	(466,862)
GILA	559	1,257	480	777	139,294	249.18	110.81	(34)	(56)	(8,720)	(167)	(276)	(36,073)
LA PAZ	87	209	55	154	18,309	210.45	87.60	(9)	(6)	(1,750)	(103)	(212)	(20,708)
PINAL	914	2,025	544	1,481	187,508	205.15	92.60	(122)	(254)	(23,362)	(1,051)	(2,326)	(219,958)
YAVAPAI	297	589	131	458	59,363	199.88	100.79	(55)	(104)	(10,859)	(406)	(784)	(78,095)
YUMA	487	1,112	272	840	104,392	214.36	93.88	(62)	(128)	(11,198)	(536)	(1,098)	(112,028)
SOUTHERN	3,908	8,342	2,369	5,973	822,133	210.37	98.55	(525)	(1,037)	(102,274)	(4,150)	(8,285)	(875,706)
COCHISE	365	711	161	550	74,017	202.79	104.10	(37)	(87)	(8,857)	(427)	(841)	(89,389)
GRAHAM	202	372	121	251	45,982	227.63	123.61	3	0	903	(96)	(214)	(21,060)
GREENLEE	14	34	7	27	2,968	212.00	87.29	(4)	(7)	(872)	(17)	(28)	(3,188)
PIMA	3,209	6,981	2,027	4,954	675,542	210.51	96.77	(480)	(929)	(92,703)	(3,470)	(6,912)	(731,131)
SANTA CRUZ	118	244	53	191	23,624	200.20	96.82	(7)	(14)	(745)	(140)	(290)	(30,938)

1/EXCLUDES: PRIOR MONTH NET TOTALS OF 1,557 CASES; 3,773 RECIPIENTS; \$331,966.  
 GRANT DIVERSION TOTALS OF: 1,666 CASES; \$1,226,116.  
 ZERO PAY TOTALS OF 3,734 CASES; 11,180 RECIPIENTS.

TANF CHILD ONLY: 7,827 CASES; 13,155 RECIPIENTS; \$1,492,805.  
 RRP: 384 CASES; 624 RECIPIENTS; \$78,617.

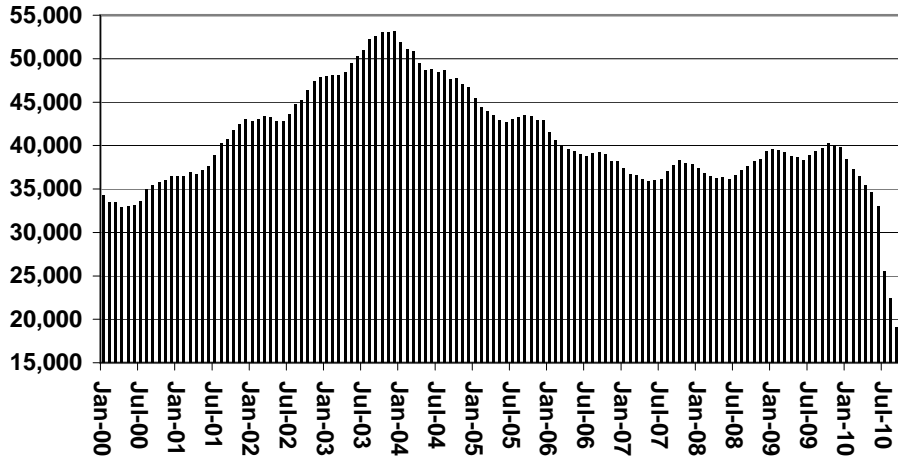
	CURRENT MO. CASES	CURRENT MO. RECIP.	CURRENT MO. DOLLARS	PRIOR MO. CASES	PRIOR MO. RECIP.	PRIOR MO. DOLLARS
PASQUA/YAQUI	259	717	\$75,497	17	44	\$5,966
WM APACHE	0	0	\$0	0	0	\$0
SALT RIVER	64	203	\$19,142	13	40	\$1,489
SAN CARLOS	546	1,210	\$140,880	36	87	\$6,593
HOPÍ	119	342	\$27,877	12	30	\$1,717
<b>TOTAL</b>	<b>988</b>	<b>2,472</b>	<b>\$263,396</b>	<b>78</b>	<b>201</b>	<b>\$15,765</b>

# TANF SUMMARY

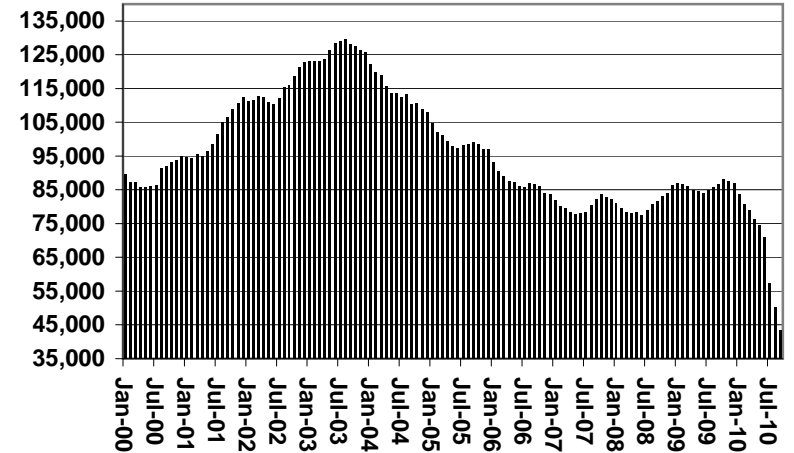
TABLES 1, 1A, 1B, & 1C

COMPARISON OF CASES, RECIPIENTS, PAYMENTS & AVERAGE PAYMENTS  
FOR 2000, 2001, 2002, 2003, 2004, 2005, 2006, 2007, 2008, 2009, & 2010

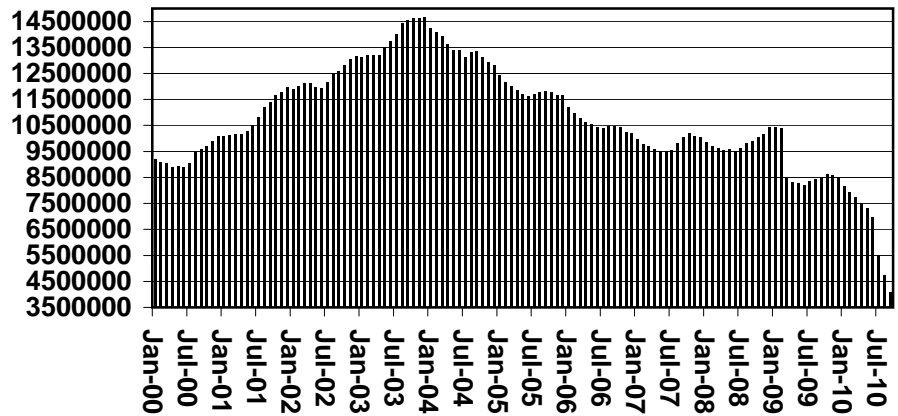
**Cases**



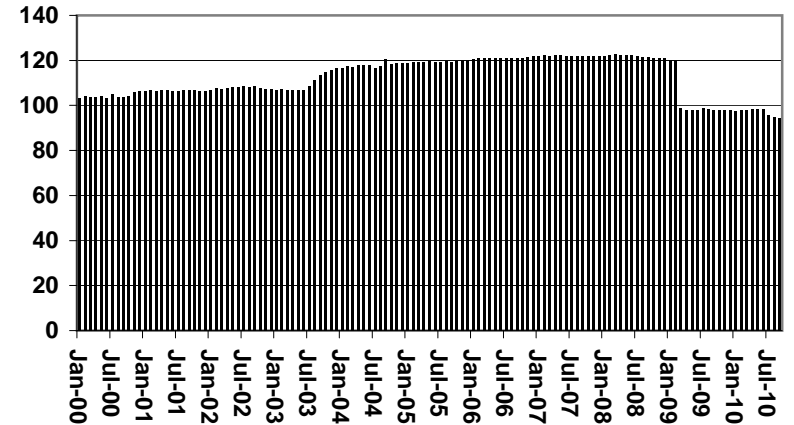
**Recipients**



**Payments**



**Average Payments Per Recipient**





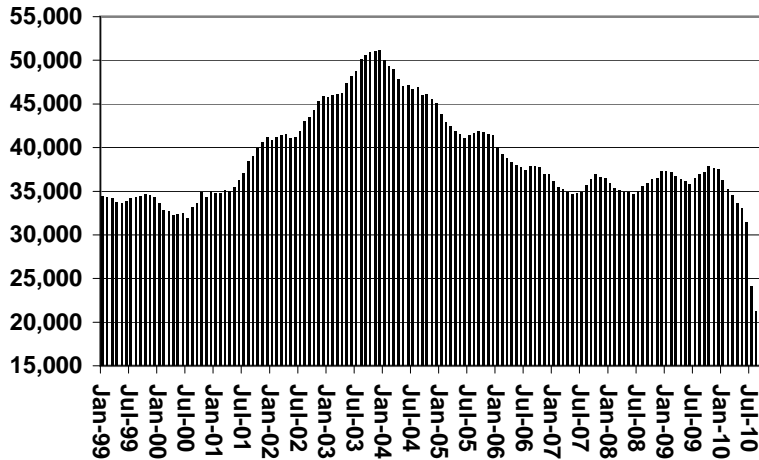
# CHART 1

## CASH ASSISTANCE PROGRAM

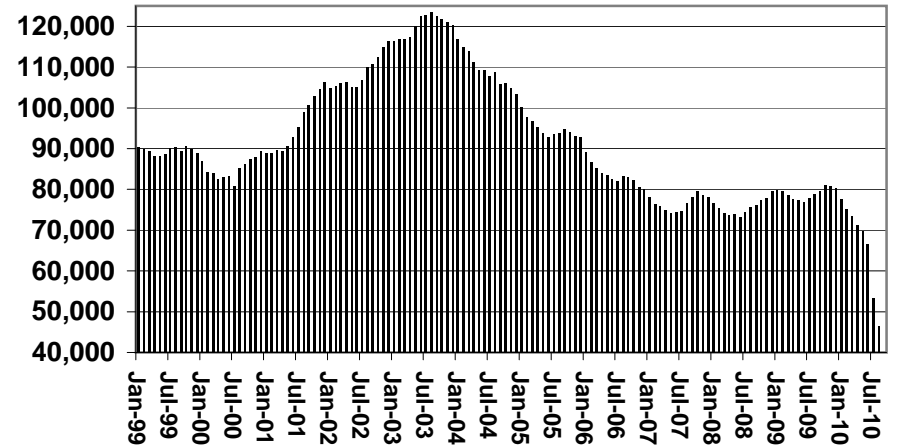
### COMPARISON OF CASES, RECIPIENTS, PAYMENTS & AVERAGE PAYMENTS

#### FOR 1999, 2000, 2001, 2002, 2003, 2004, 2005, 2006, 2007, 2008, 2009, & 2010

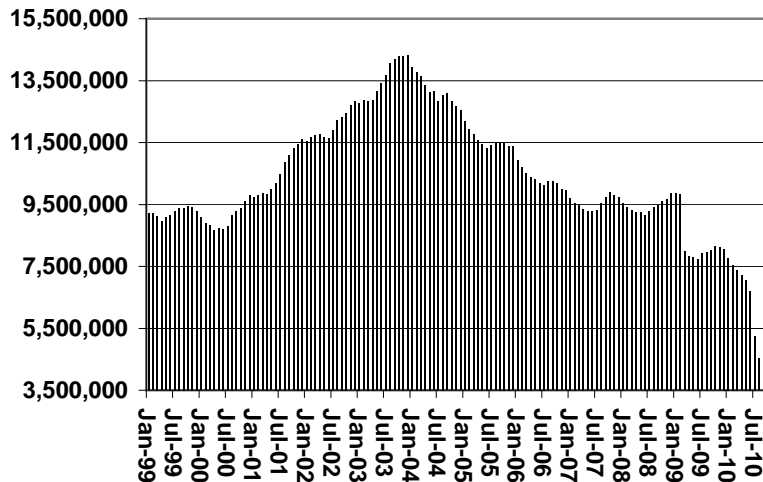
**Cases**



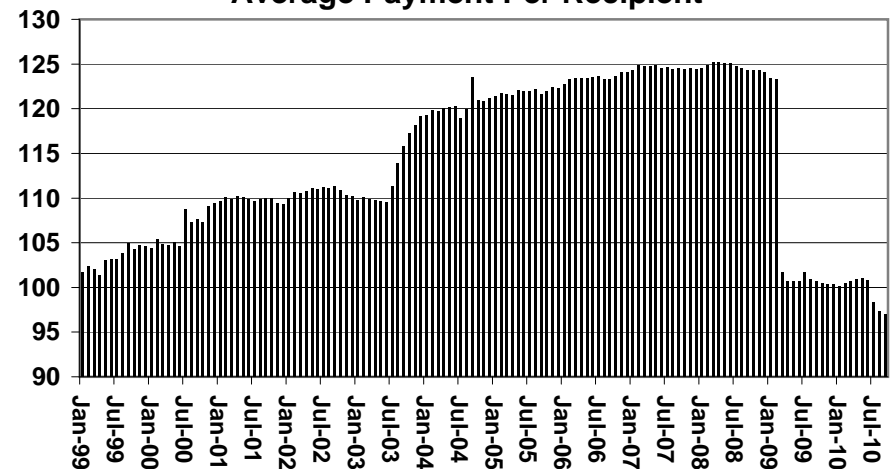
**Recipients**



**Payments**



**Average Payment Per Recipient**



**TABLE 1A  
CA-UP**

**CASH ASSISTANCE UNEMPLOYED PARENT PROGRAM: ARIZONA 1**

	SEPTEMBER 2010							CHANGE FROM			AUGUST 2010			SEPTEMBER 2009		
	FAMILIES (CASES)	PERSONS (RECIP.)	ADULTS	CHILDREN	TOTAL PAYMENTS	AVERAGE PAYMENT/ CASE	AVERAGE PAYMENT/ RECIP.	FAMILIES (CASES)	PERSONS (RECIP.)	TOTAL PAYMENTS	FAMILIES (CASES)	PERSONS (RECIP.)	TOTAL PAYMENTS			
	ARIZONA	601	2,222	939	1,283	170,896	284.35	76.91	(45)	(136)	(9,630)	(865)	(2,962)	(240,330)		
REGION																
MARICOPA	422	1,554	617	937	121,589	288.13	78.24	(43)	(115)	(8,314)	(566)	(1,812)	(148,793)			
NORTHERN	17	53	30	23	4,214	247.88	79.51	0	1	178	(36)	(150)	(12,777)			
APACHE	1	4	2	2	335	335.00	83.75	1	4	335	0	(1)	(57)			
COCONINO	1	3	2	1	278	278.00	92.67	1	3	278	(2)	(10)	(784)			
MOHAVE	12	38	22	16	2,928	244.00	77.05	(1)	(3)	(419)	(13)	(61)	(4,792)			
NAVAJO	3	8	4	4	673	224.33	84.13	(1)	(3)	(16)	(21)	(78)	(7,144)			
CENTRAL	59	218	109	109	16,084	272.61	73.78	2	6	527	(64)	(231)	(17,002)			
GILA	2	6	4	2	555	277.50	92.50	(1)	(4)	(273)	0	(2)	194			
LA PAZ	4	16	8	8	1,340	335.00	83.75	0	1	57	(3)	(10)	(578)			
PINAL	32	125	62	63	8,395	262.34	67.16	3	9	743	(61)	(219)	(16,618)			
YAVAPAI	4	14	7	7	1,217	304.25	86.93	0	(4)	(237)	(9)	(31)	(2,380)			
YUMA	17	57	28	29	4,577	269.24	80.30	0	(2)	82	(15)	(57)	(4,514)			
SOUTHERN	103	397	183	214	29,009	281.64	73.07	(4)	(22)	(1,866)	(175)	(681)	(54,864)			
COCHISE	1	4	0	4	301	301.00	75.25	(2)	(8)	(670)	(4)	(17)	(1,431)			
GRAHAM	1	3	2	1	278	0.00	0.00	1	3	278	(1)	(3)	(175)			
GREENLEE	0	0	0	0	0	0.00	0.00	0	0	0	0	0	0			
PIMA	101	390	181	209	28,430	281.49	72.90	(3)	(17)	(1,474)	(165)	(644)	(52,053)			
SANTA CRUZ	0	0	0	0	0	0.00	0.00	0	0	0	(5)	(17)	(1,205)			

1/EXCLUDES: PRIOR MONTH NET TOTALS OF: 74 CASES; 295 RECIPIENTS; \$31,704.  
GRANT DIVERSION TOTALS OF: 0 CASES; \$0.  
ZERO PAY TOTALS OF 23 CASES; 110 RECIPIENTS.

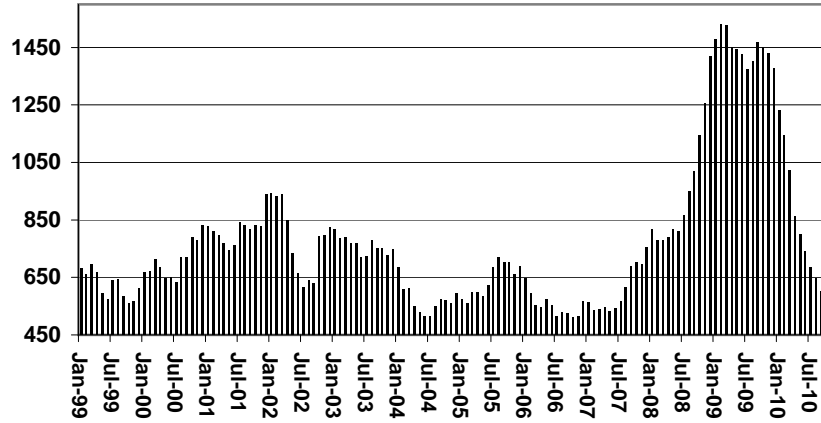
	CURRENT MO. CASES	CURRENT MO. RECIP.	CURRENT MO. DOLLARS	PRIOR MO. CASES	PRIOR MO. RECIP.	PRIOR MO. DOLLARS
PASQUAYYAQUI	11	38	\$3,260	4	13	\$938
WM APACHE	0	0	\$0	0	0	\$0
SALT RIVER	0	0	\$0	0	0	\$0
SAN CARLOS	0	0	\$0	0	0	\$0
HOPI	0	0	\$0	0	0	\$0
<b>TOTAL</b>	<b>11</b>	<b>38</b>	<b>\$3,260</b>	<b>4</b>	<b>13</b>	<b>\$938</b>

CASES WITH GRANT UNDER \$100 (SEE TABLE 1C).

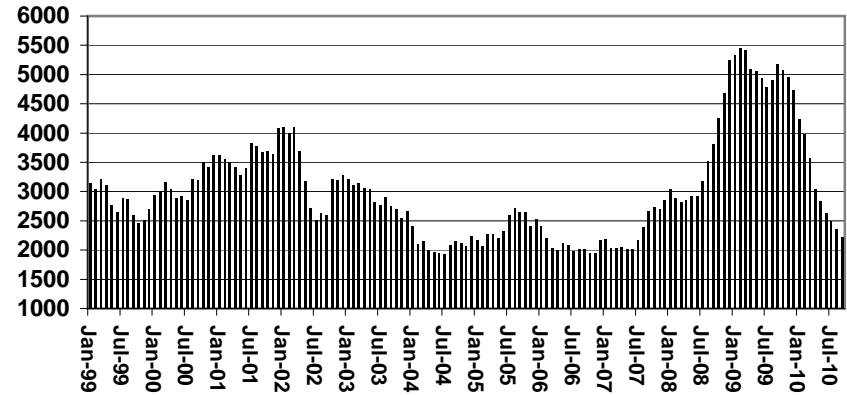
# CHART 1A

## CASH ASSISTANCE UNEMPLOYED PARENT PROGRAM COMPARISON OF CASES, RECIPIENTS, PAYMENTS & AVERAGE PAYMENTS FOR 1999, 2000, 2001, 2002, 2003, 2004, 2005, 2006, 2007, 2008, 2009, & 2010

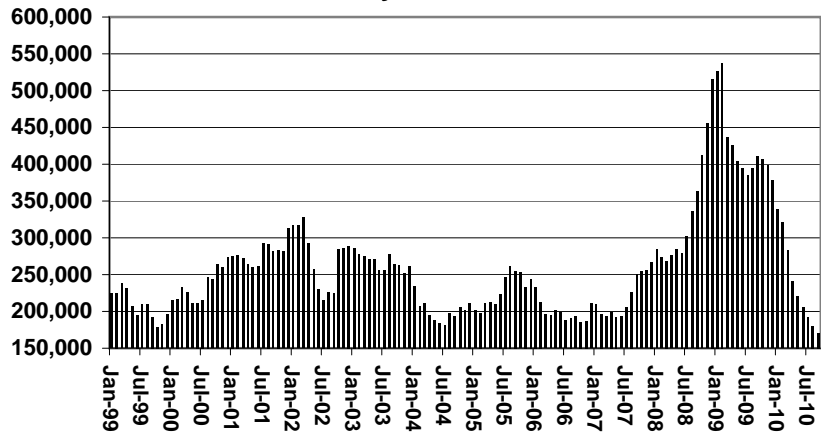
### Cases



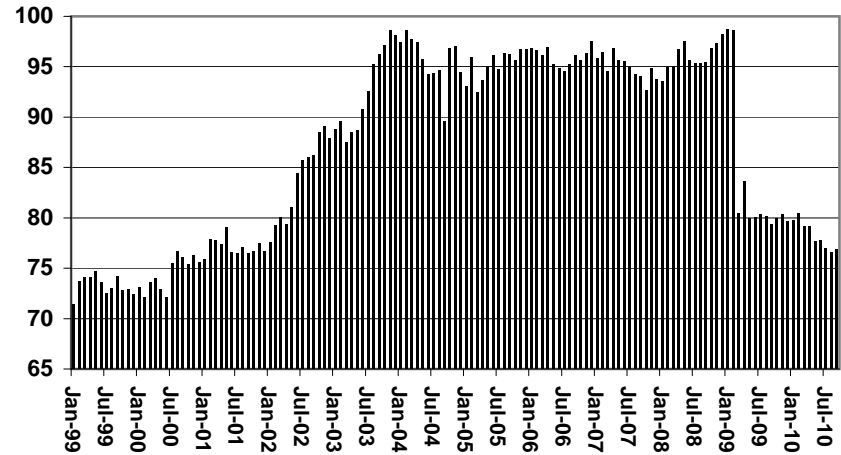
### Recipients



### Payments



### Average Payment Per Recipient





**TABLE 1B 1/**

**CASH ASSISTANCE: ARIZONA  
CASES WITH GRANT UNDER \$100**

	SEPTEMBER 2010							CHANGE FROM			AUGUST 2010			SEPTEMBER 2009		
	FAMILIES (CASES)	PERSONS (RECIP.)	ADULTS	CHILDREN	TOTAL PAYMENTS	AVERAGE PAYMENT/ CASE	AVERAGE PAYMENT/ RECIP.	FAMILIES (CASES)	PERSONS (RECIP.)	TOTAL PAYMENTS	FAMILIES (CASES)	PERSONS (RECIP.)	TOTAL PAYMENTS			
	ARIZONA	462	973	266	707	35,524	76.89	36.51	(116)	(244)	(5,625)	(458)	(812)	(28,366)		
REGION																
MARICOPA	291	632	165	467	22,063	75.82	34.91	(90)	(201)	(4,315)	(266)	(476)	(14,540)			
NORTHERN	27	59	16	43	2,158	79.93	36.58	(2)	(4)	(162)	(35)	(73)	(2,223)			
APACHE	0	0	0	0	0	0.00	0.00	(3)	(6)	(227)	0	0	0			
COCONINO	1	2	0	2	73	73.00	36.50	(1)	(2)	(26)	(3)	(4)	(323)			
MOHAVE	20	44	12	32	1,375	68.75	31.25	1	2	125	(23)	(49)	(1,640)			
NAVAJO	6	13	4	9	710	118.33	54.62	1	2	(34)	(9)	(20)	(260)			
CENTRAL	41	74	19	55	3,709	90.46	50.12	(10)	(18)	(143)	(74)	(136)	(5,219)			
GILA	1	2	1	1	112	112.00	56.00	(6)	(13)	(293)	(8)	(9)	(478)			
LA PAZ	5	9	4	5	331	66.20	36.78	2	4	(10)	0	(3)	(203)			
PINAL	17	34	7	27	1,835	107.94	53.97	(1)	3	356	(40)	(69)	(2,146)			
YAVAPAI	10	16	3	13	727	72.70	45.44	0	(2)	132	(18)	(35)	(1,408)			
YUMA	8	13	4	9	704	88.00	54.15	(5)	(10)	(328)	(8)	(20)	(984)			
SOUTHERN	103	208	66	142	7,594	73.73	36.51	(14)	(21)	(1,005)	(83)	(127)	(6,384)			
COCHISE	14	27	7	20	835	59.64	30.93	1	3	45	(10)	(18)	(1,203)			
GRAHAM	2	6	2	4	153	76.50	25.50	0	0	99	(7)	(14)	(362)			
GREENLEE	0	0	0	0	0	0.00	0.00	0	0	0	0	0	0			
PIMA	84	170	56	114	6,303	75.04	37.08	(12)	(19)	(975)	(64)	(90)	(4,780)			
SANTA CRUZ	3	5	1	4	303	101.00	60.60	(3)	(5)	(174)	(2)	(5)	(39)			

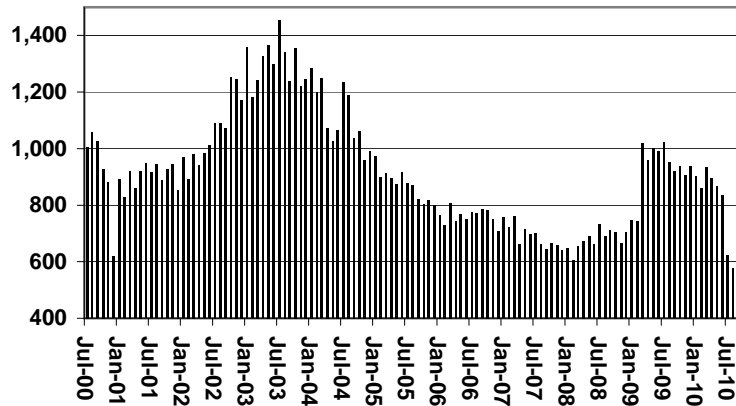
EXCLUDES: PRIOR MONTH NET TOTALS OF 546 CASES; 1,164 RECIPIENTS; \$40,866.

# CHART 1B

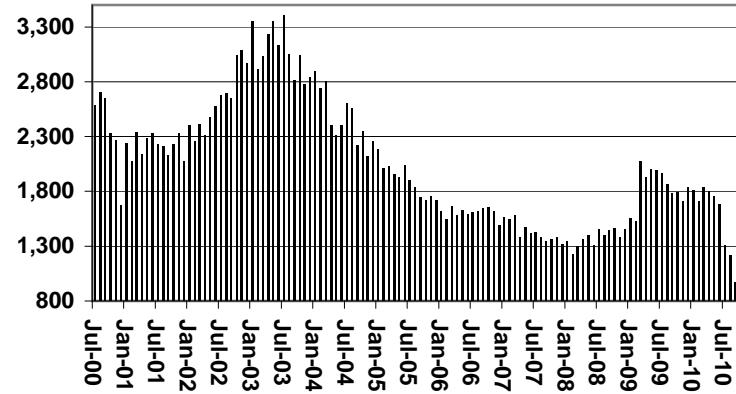
## CASH ASSISTANCE PROGRAM CASES WITH GRANT UNDER \$100

FOR 1999, 2000, 2001, 2002, 2003, 2004, 2005, 2006, 2007, 2008, 2009, & 2010

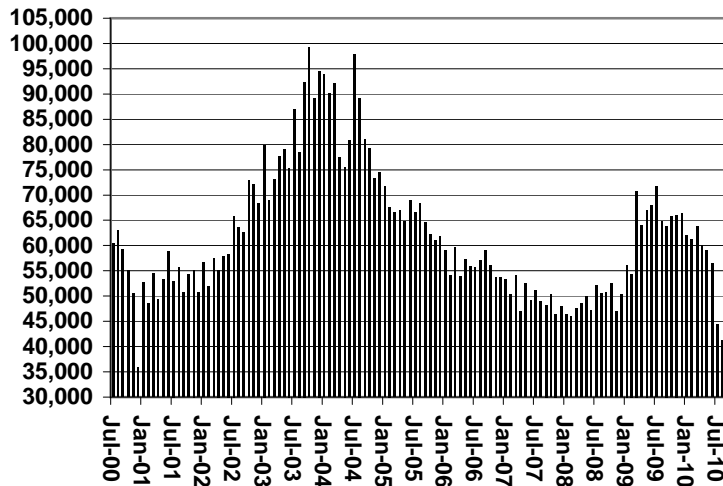
Cases



Recipients



Payments



Average Payment Per Recipient

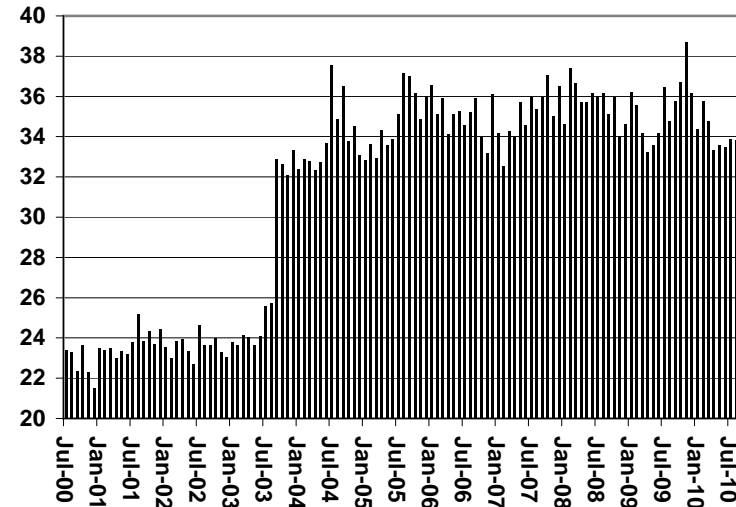


TABLE 1C 1/

CASH ASSISTANCE UNEMPLOYED PARENT PROGRAM: ARIZONA  
 CASES WITH GRANT UNDER \$100

	SEPTEMBER 2010							CHANGE FROM			AUGUST 2010			SEPTEMBER 2009		
	FAMILIES (CASES)	PERSONS (RECIP.)	ADULTS	CHILDREN	TOTAL PAYMENTS	AVERAGE PAYMENT/ CASE	AVERAGE PAYMENT/ RECIP.	FAMILIES (CASES)	PERSONS (RECIP.)	TOTAL PAYMENTS	FAMILIES (CASES)	PERSONS (RECIP.)	TOTAL PAYMENTS			
	ARIZONA	28	80	17	63	1,410	50.36	17.63	8	15	479	(30)	(70)	(1,784)		
REGION																
MARICOPA	23	66	9	57	1,159	50.39	17.56	7	14	387	(25)	(57)	(1,470)			
NORTHERN	1	3	2	1	21	21.00	7.00	0	0	0	1	3	21			
APACHE	0	0	0	0	0	0.00	0.00	0	0	0	0	0	0			
COCONINO	0	0	0	0	0	0.00	0.00	0	0	0	0	0	0			
MOHAVE	1	3	2	1	21	21.00	7.00	0	0	0	1	3	21			
NAVAJO	0	0	0	0	0	0.00	0.00	0	0	0	0	0	0			
CENTRAL	1	3	2	1	18	18.00	6.00	(1)	(5)	(37)	(4)	(8)	(259)			
GILA	0	0	0	0	0	0.00	0.00	(1)	(5)	(37)	0	0	0			
LA PAZ	0	0	0	0	0	0.00	0.00	0	0	0	0	0	0			
PINAL	1	3	2	1	18	18.00	6.00	0	0	0	(2)	(5)	(155)			
YAVAPAI	0	0	0	0	0	0.00	0.00	0	0	0	(2)	(3)	(104)			
YUMA	0	0	0	0	0	0.00	0.00	0	0	0	0	0	0			
SOUTHERN	3	8	4	4	212	70.67	26.50	2	6	129	(2)	(8)	(76)			
COCHISE	0	0	0	0	0	0.00	0.00	0	0	0	0	0	0			
GRAHAM	0	0	0	0	0	0.00	0.00	0	0	0	0	0	0			
GREENLEE	0	0	0	0	0	0.00	0.00	0	0	0	0	0	0			
PIMA	3	8	4	4	212	70.67	26.50	2	6	129	(2)	(8)	(76)			
SANTA CRUZ	0	0	0	0	0	0.00	0.00	0	0	0	0	0	0			

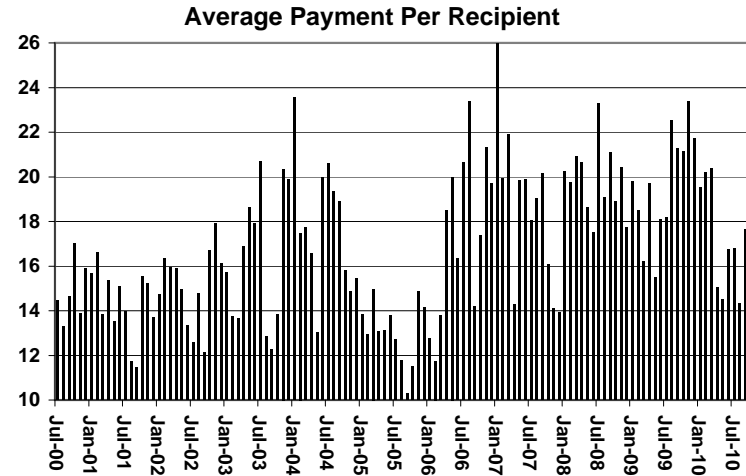
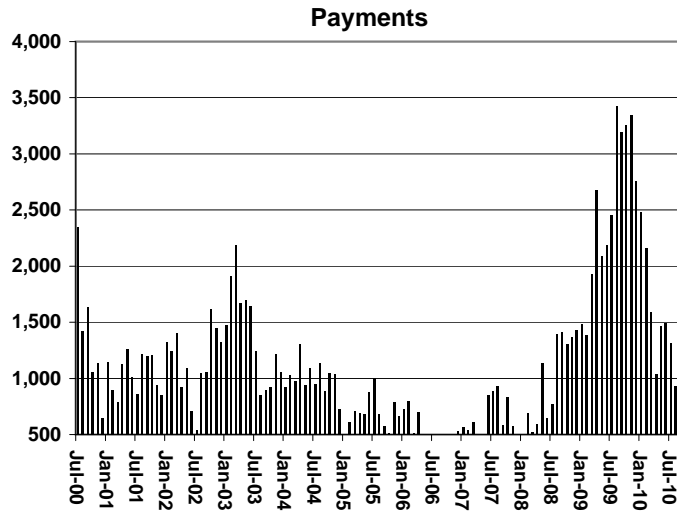
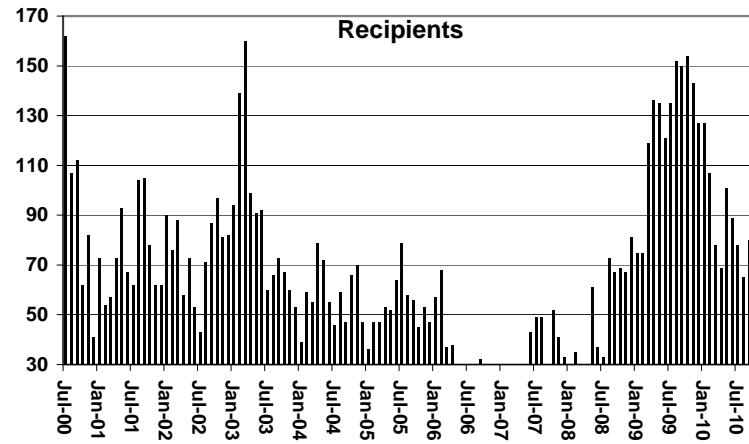
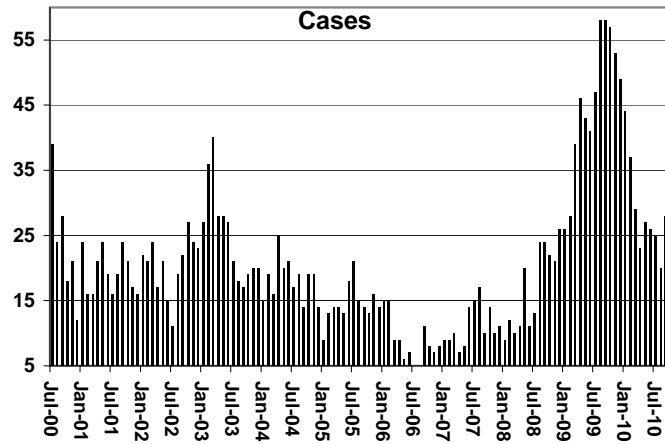
EXCLUDES: PRIOR MONTH NET TOTALS OF 41 CASES; 147 RECIPIENTS; \$2,216.

# CHART 1C

## CASH ASSISTANCE UNEMPLOYED PARENT PROGRAM

### CASES WITH GRANT UNDER \$100

FOR 1999, 2000, 2001, 2002, 2003, 2004, 2005, 2006, 2007, 2008, 2009, & 2010



**TABLE 4**

**TUBERCULOSIS CONTROL: ARIZONA 1/**

	SEPTEMBER 2010						CHANGE FROM			AUGUST 2010			SEPTEMBER 2009		
	NUMBER OF CASES	PERSONS (RECIP.)	TOTAL PAYMENTS	AVERAGE PAYMENT/ CASE	AVERAGE PAYMENT/ RECIP.		NUMBER OF CASES	PERSONS (RECIP.)	TOTAL PAYMENTS	NUMBER OF CASES	PERSONS (RECIP.)	TOTAL PAYMENTS	NUMBER OF CASES	PERSONS (RECIP.)	TOTAL PAYMENTS
	ARIZONA	1	1	173	173.00	173.00		0	0	0	(1)	(1)	(108)		
REGION															
MARICOPA	1	1	173	173.00	173.00		0	0	0	0	0	0			
NORTHERN	0	0	0	0.00	0.00		0	0	0	0	0	0			
APACHE	0	0	0	0.00	0.00		0	0	0	0	0	0			
COCONINO	0	0	0	0.00	0.00		0	0	0	0	0	0			
MOHAVE	0	0	0	0.00	0.00		0	0	0	0	0	0			
NAVAJO	0	0	0	0.00	0.00		0	0	0	0	0	0			
CENTRAL	0	0	0	0.00	0.00		0	0	0	0	0	0			
GILA	0	0	0	0.00	0.00		0	0	0	0	0	0			
LA PAZ	0	0	0	0.00	0.00		0	0	0	0	0	0			
PINAL	0	0	0	0.00	0.00		0	0	0	0	0	0			
YAVAPAI	0	0	0	0.00	0.00		0	0	0	0	0	0			
YUMA	0	0	0	0.00	0.00		0	0	0	0	0	0			
SOUTHERN	0	0	0	0.00	0.00		0	0	0	(1)	(1)	(108)			
COCHISE	0	0	0	0.00	0.00		0	0	0	(1)	(1)	(108)			
GRAHAM	0	0	0	0.00	0.00		0	0	0	0	0	0			
GREENLEE	0	0	0	0.00	0.00		0	0	0	0	0	0			
PIMA	0	0	0	0.00	0.00		0	0	0	0	0	0			
SANTA CRUZ	0	0	0	0.00	0.00		0	0	0	0	0	0			

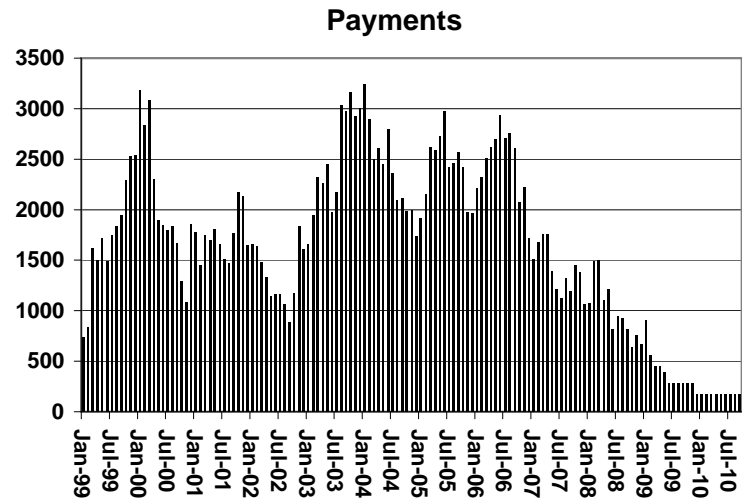
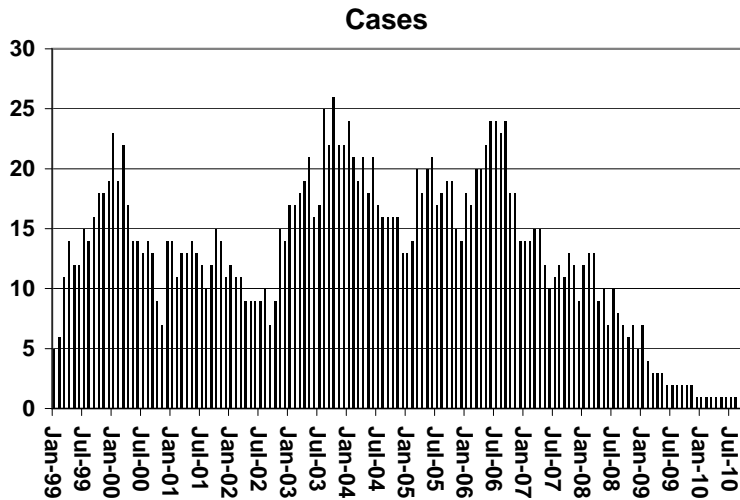
1/EXCLUDES: PRIOR MONTH NET TOTALS OF : 0 CASES; 0 RECIPIENTS; \$0.

# CHART 4

## TUBERCULOSIS CONTROL PROGRAM

### COMPARISON OF CASES, PAYMENTS & AVERAGE PAYMENTS

FOR 1999, 2000, 2001, 2002, 2003, 2004, 2005, 2006, 2007, 2008, 2009, & 2010



### Average Payment Per Case

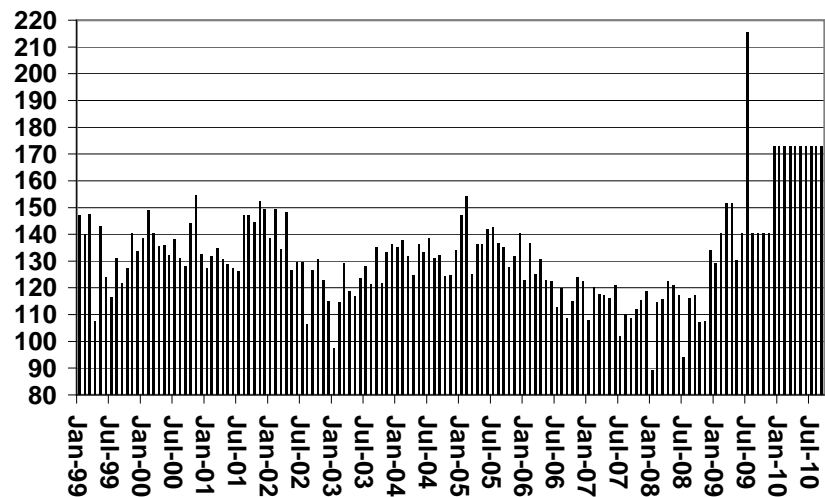


TABLE 6

SUPPLEMENTAL NUTRITION ASSISTANCE PROGRAM: ARIZONA 1

	CHANGE FROM												
	SEPTEMBER 2010							AUGUST 2010			SEPTEMBER 2009		
	HOUSEHOLDS	PERSONS	ADULTS	CHILDREN	TOTAL PAYMENTS ISSUANCE	AVERAGE PAYMT./ HOUSEHOLD	AVERAGE PAYMT./ PERSON	HOUSEHOLDS	PERSONS	TOTAL PAYMENTS ISSUANCE	HOUSEHOLDS	PERSONS	TOTAL PAYMENTS ISSUANCE
ARIZONA	456,467	1,044,410	540,119	504,291	133,448,368	292.35	127.77	(443)	(3,369)	(965,209)	56,160	102,415	8,952,502
REGION													
MARICOPA	246,398	564,040	274,557	289,483	72,407,767	293.87	128.37	(1,742)	(5,137)	(872,807)	31,969	58,797	4,405,792
NORTHERN	52,451	127,760	71,387	56,373	16,054,574	306.09	125.66	156	104	(108,518)	5,932	10,978	1,214,752
APACHE	9,855	27,496	14,744	12,752	3,426,863	347.73	124.63	19	(55)	(18,870)	3,067	6,905	864,763
COCONINO	9,579	23,806	12,661	11,145	2,954,290	308.41	124.10	35	(51)	(31,309)	920	80	(15,373)
MOHAVE	20,117	42,617	25,604	17,013	5,408,117	268.83	126.90	(19)	(4)	(41,473)	3,148	8,002	863,885
NAVAJO	12,900	33,841	18,378	15,463	4,265,304	330.64	126.04	121	214	(16,866)	(1,203)	(4,009)	(498,523)
CENTRAL	59,769	140,963	76,615	64,348	17,706,259	296.24	125.61	328	455	(55,917)	6,399	12,031	1,229,661
GILA	5,935	12,836	7,569	5,267	1,696,262	285.81	132.15	44	52	3,094	701	986	118,700
LA PAZ	1,947	3,939	2,313	1,626	506,696	260.24	128.64	(23)	(121)	(24,143)	210	241	19,635
PINAL	21,182	52,063	27,134	24,929	6,668,176	314.80	128.08	118	154	6,484	1,574	2,829	219,427
YAVAPAI	14,378	29,068	17,398	11,670	3,634,696	252.80	125.04	(6)	(47)	(33,335)	2,052	3,629	359,128
YUMA	16,327	43,057	22,201	20,856	5,200,429	318.52	120.78	195	417	(8,017)	1,862	4,346	512,771
SOUTHERN	97,849	211,647	117,560	94,087	27,279,768	278.79	128.89	815	1,209	72,033	11,860	20,609	2,102,297
COCHISE	10,246	22,251	12,587	9,664	2,785,474	271.86	125.18	125	296	29,710	991	2,060	232,531
GRAHAM	3,350	7,800	4,335	3,465	1,007,231	300.67	129.13	47	66	7,498	519	885	146,218
GREENLEE	494	1,071	618	453	134,654	272.58	125.73	(8)	(40)	(3,979)	2	(110)	(6,630)
PIMA	79,454	168,976	94,202	74,774	21,962,922	276.42	129.98	570	730	21,789	10,290	17,671	1,741,426
SANTA CRUZ	4,305	11,549	5,818	5,731	1,389,487	322.76	120.31	81	157	17,015	58	103	(11,248)

1/EXCLUDES: PRIOR MONTH NET TOTALS OF : 14,031 CASES; 33,929 RECIPIENTS; \$2,729,808.

AGED CANCELATIONS: 8,715 CASES; 11,204 RECIPIENTS; 527,296.

SNAP CONVERSIONS: 0 CASES; 0 RECIPIENTS; \$0.

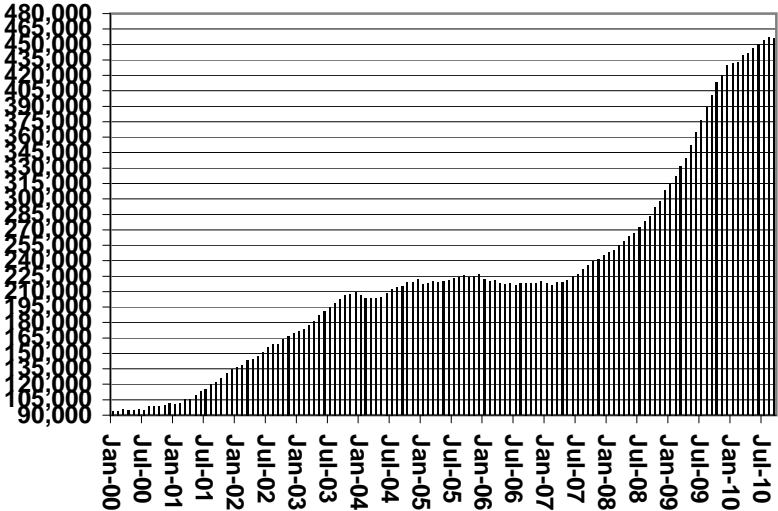
SNAP CHILD ONLY: 36,254 CASES; 87,464 RECIPIENTS; \$11,499,983.

SNAP ZERO PAY: 13,633 CASES; 55,276 RECIPIENTS.

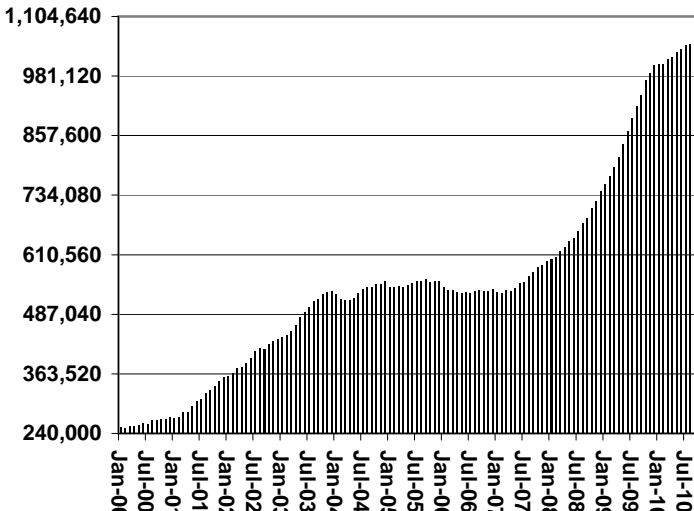
# CHART 6

## SUPPLEMENTAL NUTRITION ASSISTANCE PROGRAM (SNAP) COMPARISON OF HOUSEHOLDS, RECIPIENTS, PAYMENTS & AVERAGE PAYMENTS FOR 1999, 2000, 2001, 2002, 2003, 2004, 2005, 2006, 2007, 2008, 2009, & 2010

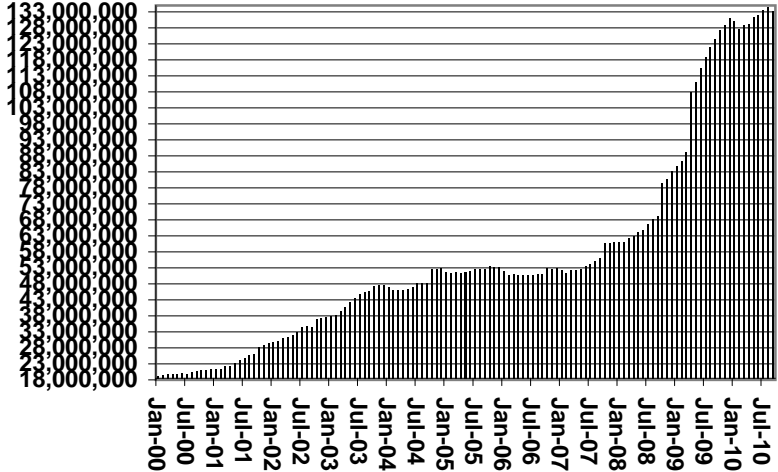
**Households**



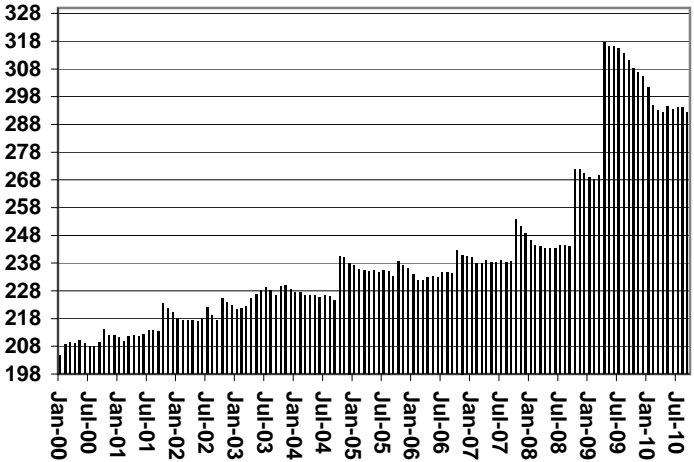
**Recipients**



**Payments**



**Average Payment Per Household**





**TABLE 7A**  
**MEDICAL ASSISTANCE PROGRAM**  
**RECIPIENTS**

**SEPTEMBER 2010**

	SOBRA WOMAN 133% FPL	SOBRA CHILD	ADULT W/O CHILD 100% FPL	FOSTER CARE	1931 36% FPL	FEDERAL EMERGENCY SERVICES	INFANTS	ADULT W/O CHILD 40% FPL	MEDICAL W/SPEND DOWN	SOBRA WOMAN 100% FPL	SOBRA CHILD 100% FPL	TRANSITIONAL MEDICAL T1 - T4	1931 100% FPL	YATI	OTHER	TOTAL CASES
ARIZONA	10,965	68,539	61,978	12,057	338,481	53,285	47,597	170,656	7,276	3,681	227,596	43,346	122,012	358	27,703	1,195,530
REGION																
MARICOPA	5,882	38,383	30,071	6,292	186,594	41,500	28,488	86,729	3,983	1,845	132,590	23,152	62,689	200	14,264	662,662
NORTHERN	1,185	7,714	7,392	640	44,455	1,167	4,896	25,567	964	550	23,338	5,466	14,672	23	2,926	140,955
APACHE	196	1,550	1,054	35	11,522	90	969	5,772	122	107	4,245	1,024	2,657	0	395	29,738
COCONINO	281	1,452	1,575	131	8,517	340	1,072	4,742	156	103	4,961	1,153	3,035	14	414	27,946
MOHAVE	385	2,336	3,004	329	11,620	481	1,503	8,151	461	191	8,319	1,968	5,162	5	1,530	45,445
NAVAJO	323	2,376	1,759	145	12,796	256	1,352	6,902	225	149	5,813	1,321	3,818	4	587	37,826
CENTRAL	1,792	9,497	9,671	1,500	43,916	4,144	6,028	22,143	1,160	596	29,499	6,011	18,508	38	4,334	158,837
GILA	123	729	762	103	4,619	132	541	2,663	97	43	1,923	375	1,332	0	341	13,783
LA PAZ	57	269	283	17	1,175	117	139	869	26	12	735	196	434	0	168	4,497
PINAL	616	4,021	2,820	617	18,008	1,163	2,199	8,321	408	193	10,354	1,856	5,874	13	1,258	57,721
YAVAPAI	399	1,804	2,734	458	7,414	1,172	1,195	5,177	318	114	6,206	1,663	3,969	19	1,276	33,918
YUMA	597	2,674	3,072	305	12,700	1,560	1,954	5,113	311	234	10,281	1,921	6,899	6	1,291	48,918
SOUTHERN	2,106	12,945	14,844	3,625	63,516	6,474	8,185	36,217	1,169	690	42,169	8,717	26,143	97	6,179	233,076
COCHISE	240	1,264	1,711	239	6,942	455	831	3,282	154	73	4,295	972	2,784	3	866	24,111
GRAHAM	112	500	551	70	2,744	42	338	1,424	60	27	1,425	341	894	2	162	8,692
GREENLEE	17	63	62	8	445	3	54	203	6	4	223	43	127	2	38	1,298
PIMA	1,635	10,436	11,590	3,280	49,925	5,492	6,516	30,223	900	520	33,107	6,836	20,355	89	4,641	185,545
SANTA CRUZ	102	682	930	28	3,460	482	446	1,085	49	66	3,119	525	1,983	1	472	13,430

**TABLE 7B**  
**MEDICAL ASSISTANCE PROGRAM**  
**RECIPIENTS**

**CHANGE FROM**  
**AUGUST 2010**

	SOBRA WOMAN 133% FPL	SOBRA CHILD	ADULT W/O CHILD 100% FPL	FOSTER CARE	1931 36% FPL	FEDERAL EMERGENCY SERVICES	INFANTS	ADULT W/O CHILD 40% FPL	MEDICAL W/SPEND DOWN	SOBRA WOMAN 100% FPL	SOBRA CHILD 100% FPL	TRANSITIONAL MEDICAL T1 - T4	1931 100% FPL	YATI	OTHER	TOTAL CASES
ARIZONA	139	110	380	(20)	(2,244)	(3,044)	(397)	1,142	(124)	(62)	253	(4)	701	9	49	(3,112)
REGION																
MARICOPA	69	(80)	69	(26)	(1,093)	(2,636)	(365)	596	(72)	(65)	(385)	(350)	161	6	17	(4,154)
NORTHERN	(13)	61	19	7	(647)	(63)	(23)	78	(105)	23	20	354	(20)	4	(2)	(307)
APACHE	(13)	20	24	(5)	(151)	(7)	4	40	(26)	2	(48)	208	(46)	0	4	6
COCONINO	6	11	17	4	(145)	(7)	(15)	0	(22)	(1)	(56)	23	(16)	4	0	(197)
MOHAVE	(5)	(4)	(39)	12	(147)	(39)	(4)	(4)	(39)	16	38	70	32	1	(26)	(138)
NAVAJO	(1)	34	17	(4)	(204)	(10)	(8)	42	(18)	6	86	53	10	(1)	20	22
CENTRAL	32	23	172	2	(425)	(153)	45	142	31	6	356	(68)	334	1	16	514
GILA	2	21	0	2	(17)	(2)	5	(1)	1	3	14	(7)	25	0	(6)	40
LA PAZ	6	26	13	0	(122)	(14)	9	1	4	3	7	(5)	23	0	14	(35)
PINAL	23	20	28	9	(172)	(83)	6	122	25	9	161	7	76	(1)	3	233
YAVAPAI	(3)	(24)	30	(7)	(20)	(54)	(20)	11	(6)	(5)	(24)	29	22	2	11	(58)
YUMA	4	(20)	101	(2)	(94)	0	45	9	7	(4)	198	(92)	188	0	(6)	334
SOUTHERN	51	106	120	(3)	(79)	(192)	(54)	326	22	(26)	262	60	226	(2)	18	835
COCHISE	4	(6)	28	(3)	29	11	3	30	(2)	(5)	51	(20)	13	(2)	11	142
GRAHAM	5	(1)	20	0	0	(9)	(3)	38	3	2	23	0	14	0	7	99
GREENLEE	(3)	9	(12)	0	0	(3)	0	11	0	0	(6)	(14)	(1)	0	1	(18)
PIMA	46	82	41	1	(113)	(172)	(52)	257	20	(33)	97	158	137	0	8	477
SANTA CRUZ	(1)	22	43	(1)	5	(19)	(2)	(10)	1	10	97	(64)	63	0	(9)	135

**TABLE 7C**  
**MEDICAL ASSISTANCE PROGRAM**  
**RECIPIENTS**

**CHANGE FROM**  
**SEPTEMBER 2009**

	SOBRA WOMAN 133% FPL	SOBRA CHILD	ADULT W/O CHILD 100% FPL	FOSTER CARE	1931 36% FPL	FEDERAL EMERGENCY SERVICES	INFANTS	ADULT W/O CHILD 40% FPL	MEDICAL W/SPEND DOWN	SOBRA WOMAN 100% FPL	SOBRA CHILD 100% FPL	TRANSITIONAL MEDICAL T1 - T4	3E 1931 100% FPL	YATI	OTHER	TOTAL CASES
ARIZONA	415	2,277	9,058	540	4,200	(36,240)	(2,566)	26,783	1,056	(203)	11,439	7,450	11,060	48	2,439	37,756
REGION																
MARICOPA	362	1,164	5,415	415	1,129	(28,861)	(1,201)	15,802	484	(195)	7,640	4,664	7,795	17	1,514	16,144
NORTHERN	(93)	422	624	38	894	(757)	(316)	3,214	120	38	495	772	214	10	216	5,891
APACHE	3	133	81	(4)	261	(48)	(39)	874	6	8	(126)	309	(65)	0	25	1,418
COCONINO	(20)	26	146	(12)	291	(200)	(112)	476	15	(5)	39	120	47	8	48	867
MOHAVE	(60)	153	260	46	178	(387)	(98)	1,188	63	2	422	232	231	3	114	2,347
NAVAJO	(16)	110	137	8	164	(122)	(67)	676	36	33	160	111	1	(1)	29	1,259
CENTRAL	142	259	1,054	73	1,711	(1,599)	(214)	2,707	262	1	1,453	326	1,166	9	301	7,651
GILA	(5)	24	83	12	213	(33)	(10)	210	(10)	5	(78)	(42)	8	0	29	406
LA PAZ	23	54	38	4	(114)	(48)	(15)	117	0	(3)	59	38	61	0	14	228
PINAL	79	206	424	19	543	(540)	(10)	1,030	165	1	1,032	147	608	(1)	49	3,752
YAVAPAI	(14)	(5)	356	7	246	(549)	(165)	460	39	(19)	318	239	252	8	178	1,351
YUMA	59	(20)	153	31	823	(429)	(14)	890	68	17	122	(56)	237	2	31	1,914
SOUTHERN	4	432	1,965	14	466	(5,023)	(835)	5,060	190	(47)	1,851	1,688	1,885	12	408	8,070
COCHISE	(17)	29	175	(11)	290	(190)	(79)	395	50	(17)	231	71	106	(5)	82	1,110
GRAHAM	3	7	20	(6)	263	(22)	(78)	256	10	(12)	(21)	22	(129)	1	20	334
GREENLEE	2	6	(1)	1	56	(6)	(10)	40	0	(8)	(40)	7	(36)	2	15	28
PIMA	8	310	1,682	32	(219)	(4,699)	(614)	4,290	133	(20)	1,641	1,449	1,855	13	242	6,103
SANTA CRUZ	8	80	89	(2)	76	(106)	(54)	79	(3)	10	40	139	89	1	49	495

# CHART 7

## MEDICAL ASSISTANCE PROGRAM

### COMPARISON OF RECIPIENTS

FOR 1999, 2000, 2001, 2002, 2003, 2004, 2005, 2006, 2007, 2008, 2009, & 2010

Total Recipients

