



DEPARTMENT OF ECONOMIC SECURITY

Your Partner For A Stronger Arizona

State of Arizona

Department of Economic Security

Family Assistance Administration

Statistical Bulletin

October, 2010

Phone: (602) 542-3678

<https://www.azdes.gov/appreports.aspx>

**** STATISTICAL BULLETIN ****
ARIZONA DEPARTMENT OF ECONOMIC SECURITY
FAMILY ASSISTANCE ADMINISTRATION
BOX 6123, PHOENIX, ARIZONA 85005
PHONE (602) 542-3678

OCTOBER 2010

THIS ISSUE OF THE STATISTICAL BULLETIN COMPARES OCTOBER 2010 DATA FOR EACH OF THE INDICATED PROGRAMS WITH THE INFORMATION FOR SEPTEMBER 2010 AND OCTOBER 2009. STATEWIDE SUMMARIES OF ACTIVITY WITHIN EACH OF THE SPECIFIC PROGRAMS FOR THIS REPORT PERIOD ARE DISCUSSED BELOW. THE TABLES COMPARE CURRENT AND PRIOR MONTH DATA. DISTRICT AND COUNTY COMPARISONS ARE PROVIDED WITHIN THIS BULLETIN

TANF SUMMARY

COMPARING TO SEPTEMBER 2010, OCTOBER 2010 CASES INCREASED BY 749 (3.92%) TO 19,875. RECIPIENTS INCREASED BY 1,730 (3.99%) TO 45,041. PAYMENTS INCREASED BY \$146,632 (3.59%) TO \$4,235,179. AVERAGE PAYMENT PER CASE DECREASED BY \$0.68 (0.32%) TO \$0.00. PAYMENT PER RECIPIENT DECREASED BY \$0.37 (0.39%) TO \$94.03.

COMPARING TO OCTOBER 2009, OCTOBER 2010 CASES DECREASED BY 20,360 (50.60%). RECIPIENTS DECREASED BY 43,117 (48.91%). TOTAL PAYMENTS DECREASED BY \$4,387,751 (50.88%). THE AVERAGE PAYMENT PER CASE DECREASED BY \$1.22 (0.57%). THE AVERAGE PAYMENT PER RECIPIENT DECREASED BY \$3.78 (3.86%).

CASH ASSISTANCE (CA)

COMPARING TO SEPTEMBER 2010, OCTOBER 2010 CASES INCREASED BY 666 (3.69%) TO 18,701. RECIPIENTS INCREASED BY 1,578 (3.94%) TO 41,614. PAYMENTS INCREASED BY \$138,808 (3.58%) TO \$4,019,525. AVERAGE PAYMENT PER CASE DECREASED BY \$0.24 (0.11%) TO \$214.94. PAYMENT PER RECIPIENT DECREASED BY \$0.34 (0.35%) TO \$96.59.

COMPARING TO OCTOBER 2009, OCTOBER 2010 CASES DECREASED BY 19,090 (50.51%). RECIPIENTS DECREASED BY 39,521 (48.71%). TOTAL PAYMENTS DECREASED BY \$4,128,303 (50.67%). THE AVERAGE PAYMENT PER CASE DECREASED BY \$0.66 (0.31%). THE AVERAGE PAYMENT PER RECIPIENT DECREASED BY \$3.83 (3.81%).

CASH ASSISTANCE UNEMPLOYED PARENT PROGRAM (CA-UP)

COMPARING TO SEPTEMBER 2010, OCTOBER 2010 CASES INCREASED BY 33 (5.49%) TO 634. RECIPIENTS INCREASED BY 69 (3.11%) TO 2,291. PAYMENTS INCREASED BY \$4,518 (2.64%) TO \$175,414. AVERAGE PAYMENT PER CASE DECREASED BY \$7.67 (2.70%) TO \$276.68. PAYMENT PER RECIPIENT DECREASED BY \$0.34 (0.44%) TO \$76.57.

COMPARING TO OCTOBER 2009, OCTOBER 2010 CASES DECREASED BY 817 (56.31%). RECIPIENTS DECREASED BY 2,787 (54.88%). TOTAL PAYMENTS DECREASED BY \$230,677 (56.80%). THE AVERAGE PAYMENT PER CASE DECREASED BY \$3.19 (1.14%). THE AVERAGE PAYMENT PER RECIPIENT DECREASED BY \$3.40 (4.25%).

CASH ASSISTANCE WITH GRANT UNDER \$100 (CA-MOE)

COMPARING TO SEPTEMBER 2010, OCTOBER 2010 CASES INCREASED BY 52 (11.26%) TO 514. RECIPIENTS INCREASED BY 96 (9.87%) TO 1,069. PAYMENTS INCREASED BY \$3,289 (9.26%) TO \$38,813. AVERAGE PAYMENT PER CASE DECREASED BY \$1.38 (1.79%) TO \$75.51. AVERAGE PAYMENT PER RECIPIENT DECREASED BY \$0.20 (0.55%) TO \$36.31.

COMPARING TO OCTOBER 2009, OCTOBER 2010 CASES DECREASED BY 422 (45.09%). RECIPIENTS DECREASED BY 722 (40.31%). TOTAL PAYMENTS DECREASED BY \$26,940 (40.97%). THE AVERAGE PAYMENT PER CASE INCREASED BY \$5.26 (7.49%). THE AVERAGE PAYMENT PER RECIPIENT DECREASED BY \$0.40 (1.09%).

CASH ASSISTANCE UNEMPLOYED PARENT PROGRAM WITH GRANT UNDER \$100 (CA-UP-MOE) NEW PROGRAM STARTING 7/01

COMPARING TO SEPTEMBER 2010, OCTOBER 2010 CASES DECREASED BY 2 (7.14%) TO 26. RECIPIENTS DECREASED BY 13 (16.25%) TO 67. PAYMENTS INCREASED BY \$17 (1.21%) TO \$1,427. AVERAGE PAYMENT PER CASE INCREASED BY \$4.52 (8.98%) TO \$54.88. PAYMENT PER RECIPIENT INCREASED BY \$3.67 (20.82%) TO \$21.30.

COMPARING TO OCTOBER 2009, OCTOBER 2010 CASES DECREASED BY 31 (54.39%). RECIPIENTS DECREASED BY 87 (6.17%). TOTAL PAYMENTS DECREASED BY \$1,831 (56.20%). THE AVERAGE PAYMENT PER CASE DECREASED BY \$2.28 (3.99%). THE AVERAGE PAYMENT PER RECIPIENT INCREASED BY \$0.14 (0.66%).

TUBERCULOSIS CONTROL PROGRAM (TC)

COMPARING TO SEPTEMBER 2010, OCTOBER 2010 CASES INCREASED BY 0 (0.00%) TO 1. RECIPIENTS INCREASED BY 0 (0.00%) TO 1. PAYMENTS INCREASED BY \$0 (0.00%) TO \$173. AVERAGE PAYMENT PER CASE INCREASED BY \$40.09 (23.17%) TO \$213.09. AVERAGE PAYMENT PER RECIPIENT INCREASED BY \$0.00 (0.00%) TO \$173.00.

COMPARING TO OCTOBER 2009, OCTOBER 2010 CASES DECREASED BY 1 (50.00%). RECIPIENTS DECREASED BY 1 (50.00%). TOTAL PAYMENTS DECREASED BY \$108 (38.43%). THE AVERAGE PAYMENT PER CASE INCREASED BY \$72.59 (51.67%). THE AVERAGE PAYMENT PER RECIPIENT INCREASED BY \$32.50 (23.13%).

SUPPLEMENTAL NUTRITION ASSISTANCE PROGRAM (SNAP)

COMPARING TO SEPTEMBER 2010, OCTOBER 2010 SUPPLEMENTAL NUTRITION ASSISTANCE HOUSEHOLDS INCREASED BY 5,414 (1.19%) TO 461,881. PERSONS RECEIVING SUPPLEMENTAL NUTRITION ASSISTANCE INCREASED BY 10,795 (1.03%) TO 1,055,205. TOTAL COUPON ISSUANCE INCREASED BY \$1,299,608 (0.97%) TO \$134,747,976. THE AVERAGE HOUSEHOLD ALLOTMENT DECREASED BY \$0.61 (0.21%) TO \$291.74. THE AVERAGE ALLOTMENT PER PERSON DECREASED BY \$0.07 (0.06%) TO \$127.70.

COMPARING TO OCTOBER 2009, OCTOBER 2010 SUPPLEMENTAL NUTRITION ASSISTANCE HOUSEHOLDS INCREASED BY 48,597 (11.76%). PERSONS RECEIVING SUPPLEMENTAL NUTRITION ASSISTANCE INCREASED BY 83,043 (8.54%). TOTAL COUPON ISSUANCE INCREASED BY \$7,372,120 (5.79%). THE AVERAGE ALLOTMENT PER HOUSEHOLD DECREASED BY \$16.46 (5.34%). THE AVERAGE ALLOTMENT PER PERSON DECREASED BY \$3.32 (2.54%).

MEDICAL ASSISTANCE PROGRAM (MA) NEW TABLE INCLUDES PROP. 204 CATEGORIES

COMPARING TO JANUARY 2010, FEBRUARY 2010 TOTAL RECIPIENTS TOTAL RECIPIENTS DECREASED BY 6,946 (0.59%). SOBRA WOMEN AT 140% FPL DECREASED BY 248 (2.41%). SOBRA CHILDREN DECREASED BY 812 (1.23%). ADULTS W/O CHILD AT 100% INCREASED BY 446 (0.76%). FOSTER CARE INCREASED BY 69 (0.59%). 1931 AT 36% FPL DECREASED BY 4,919 (1.48%). EMERGENCY SERVICES DECREASED BY 5,083 (6.43%). INFANTS DECREASED BY 513 (1.02%). ADULT W/O CHILD AT 140% INCREASED BY 510 (0.33%). MEDICAL W/SPEND DOWN DECREASED BY 201 (3.10%). SOBRA WOMAN AT 100% INCREASED BY 99 (2.63%). SOBRA CHILD AT 100% INCREASED BY 902 (0.40%). TRANSITIONAL MEDICAL INCREASED BY 1,305 (3.04%). 1931 AT 100% INCREASED BY 1,355 (1.16%). YATI INCREASED BY 10 (3.02%). ALL OTHER CATEGORIES INCREASED BY 134 (0.51%).

COMPARING TO OCTOBER 2009, OCTOBER 2010 TOTAL RECIPIENTS TOTAL RECIPIENTS INCREASED BY 35,058 (2.96%). SOBRA WOMEN AT 140% FPL INCREASED BY 537 (4.97%). SOBRA CHILDREN INCREASED BY 3,862 (5.70%). ADULTS W/O CHILD AT 100% INCREASED BY 9,056 (16.26%). FOSTER CARE INCREASED BY 587 (5.09%). 1931 AT 36% FPL INCREASED BY 2,924 (0.86%). EMERGENCY SERVICES DECREASED BY 37,294 (41.51%). INFANTS DECREASED BY 2,887 (5.70%). ADULT W/O CHILD AT 140% INCREASED BY 24,493 (16.37%). MEDICAL W/SPEND DOWN INCREASED BY 953 (14.31%). SOBRA WOMAN AT 100% DECREASED BY 131 (3.34%). SOBRA CHILD AT 100% INCREASED BY 9,775 (4.43%). TRANSITIONAL MEDICAL INCREASED BY 7,173 (19.68%). 1931 AT 100% INCREASED BY 13,645 (11.97%). YATI INCREASED BY 18 (5.64%). ALL OTHER CATEGORIES INCREASED BY 2,347 (9.17%).

TANF SUMMARY

TABLES 1, 1A, 1B, & 1C: ARIZONA 1/

	OCTOBER 2010								SEPTEMBER 2010			OCTOBER 2009		
	FAMILIES (CASES)	PERSONS (RECIP.)	ADULTS	CHILDREN	TOTAL PAYMENTS	AVERAGE	AVERAGE	TOTAL PAYMENTS	FAMILIES (CASES)	PERSONS (RECIP.)	TOTAL PAYMENTS	FAMILIES (CASES)	PERSONS (RECIP.)	TOTAL PAYMENTS
						PAYMENT/ CASE	PAYMENT/ RECIP.							
ARIZONA	19,875	45,041	12,390	32,651	4,235,179	213.09	94.03		749	1,730	146,632	(20,360)	(43,117)	(4,387,751)
REGION														
MARICOPA	12,305	28,570	7,746	20,824	2,636,023	214.22	92.27		533	1,230	107,432	(12,182)	(25,782)	(2,575,225)
NORTHERN	1,122	2,473	693	1,780	230,767	205.67	93.31		20	36	1,810	(1,870)	(4,592)	(484,319)
APACHE	44	81	20	61	8,461	192.30	104.46		2	0	207	38	65	6,930
COCONINO	82	193	49	144	17,979	219.26	93.16		9	23	2,048	(163)	(343)	(31,650)
MOHAVE	638	1,340	375	965	129,822	203.48	96.88		8	0	(476)	(608)	(1,243)	(126,222)
NAVAJO	358	859	249	610	74,505	208.11	86.73		1	13	31	(1,137)	(3,071)	(333,377)
CENTRAL	2,398	5,329	1,495	3,834	520,363	217.00	97.65		54	137	11,497	(2,243)	(4,713)	(467,465)
GILA	541	1,212	455	757	134,298	248.24	110.81		(18)	(45)	(4,996)	(207)	(377)	(45,829)
LA PAZ	95	232	64	168	20,132	211.92	86.78		8	23	1,823	(98)	(188)	(18,203)
PINAL	958	2,144	566	1,578	197,940	206.62	92.32		44	119	10,432	(1,016)	(2,241)	(214,207)
YAVAPAI	299	593	131	462	59,308	198.35	100.01		2	4	(55)	(401)	(792)	(78,267)
YUMA	505	1,148	279	869	108,685	215.22	94.67		18	36	4,293	(521)	(1,115)	(110,959)
SOUTHERN	4,050	8,669	2,456	6,213	848,026	209.39	97.82		142	327	25,893	(4,065)	(8,030)	(860,742)
COCHISE	360	695	159	536	72,976	202.71	105.00		(5)	(16)	(1,041)	(433)	(866)	(90,548)
GRAHAM	213	401	129	272	48,162	226.11	120.10		11	29	2,180	(89)	(189)	(18,956)
GREENLEE	19	43	12	31	3,566	187.68	82.93		5	9	598	(4)	(3)	(977)
PIMA	3,337	7,279	2,098	5,181	699,963	209.76	96.16		128	298	24,421	(3,400)	(6,684)	(718,193)
SANTA CRUZ	121	251	58	193	23,359	193.05	93.06		3	7	(265)	(139)	(288)	(32,068)

1/EXCLUDES: PRIOR MONTH NET TOTALS OF 1,879 CASES; 4,519 RECIPIENTS; \$394,132.
 GRANT DIVERSION TOTALS OF: 2,102 CASES; \$1,587,579.
 ZERO PAY TOTALS OF 3,727 CASES; 11,008 RECIPIENTS.

TANF CHILD ONLY: 8,112 CASES; 13,619 RECIPIENTS; \$1,539,208.
 RRP: 355 CASES; 589 RECIPIENTS; \$74,804.

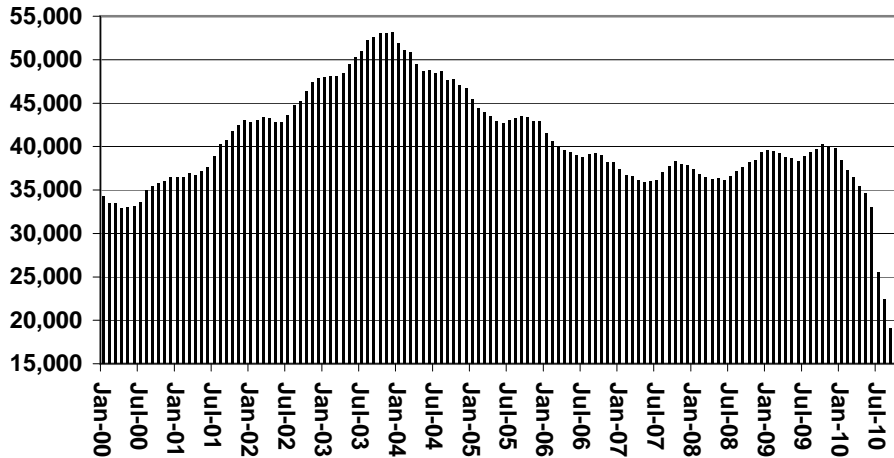
	CURRENT MO. CASES	CURRENT MO. RECIP.	CURRENT MO. DOLLARS	PRIOR MO. CASES	PRIOR MO. RECIP.	PRIOR MO. DOLLARS
PASQUA/YAQUI	261	722	\$75,802	23	68	\$9,446
WM APACHE	0	0	\$0	0	0	\$0
SALT RIVER	81	259	\$23,828	16	54	\$2,324
SAN CARLOS	534	1,184	\$137,246	26	58	\$4,773
HOPÍ	129	382	\$30,202	8	31	\$980
TOTAL	1,005	2,547	\$267,078	73	211	\$17,523

TANF SUMMARY

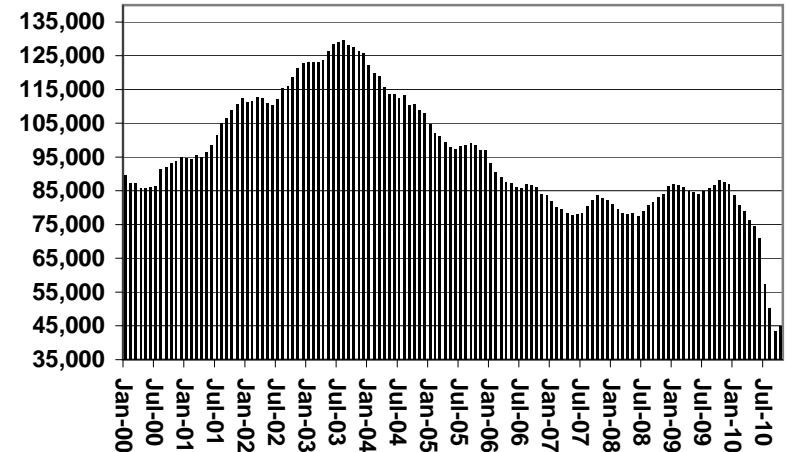
TABLES 1, 1A, 1B, & 1C

COMPARISON OF CASES, RECIPIENTS, PAYMENTS & AVERAGE PAYMENTS FOR 2000, 2001, 2002, 2003, 2004, 2005, 2006, 2007, 2008, 2009, & 2010

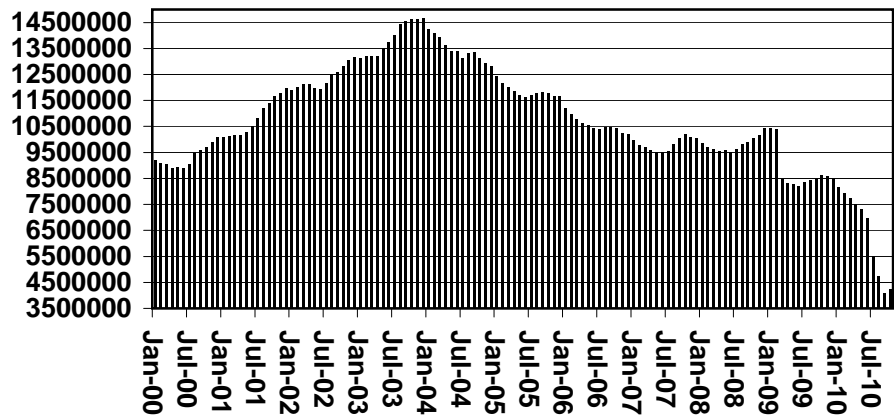
Cases



Recipients



Payments



Average Payments Per Recipient

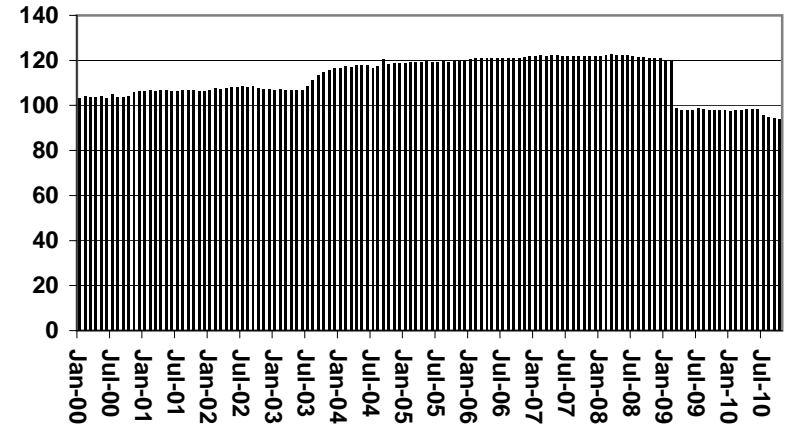


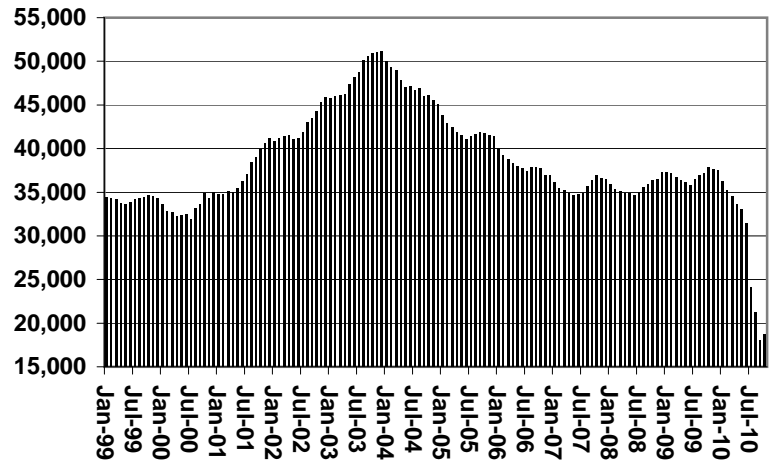
CHART 1

CASH ASSISTANCE PROGRAM

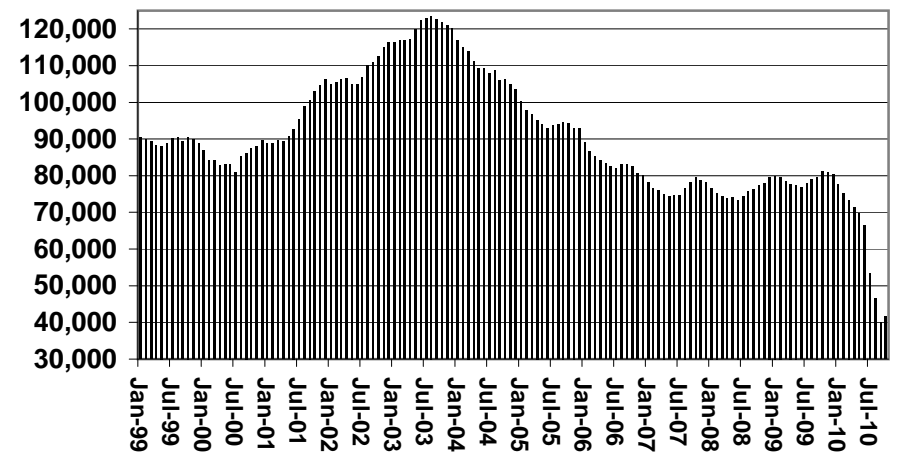
COMPARISON OF CASES, RECIPIENTS, PAYMENTS & AVERAGE PAYMENTS

FOR 1999, 2000, 2001, 2002, 2003, 2004, 2005, 2006, 2007, 2008, 2009, & 2010

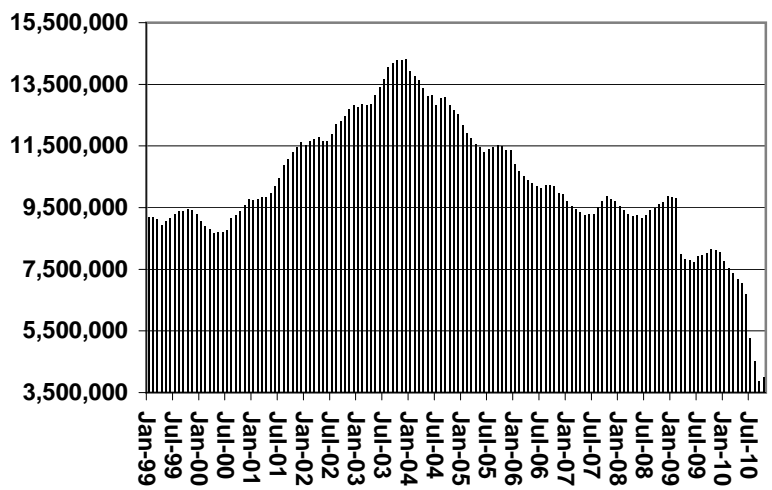
Cases



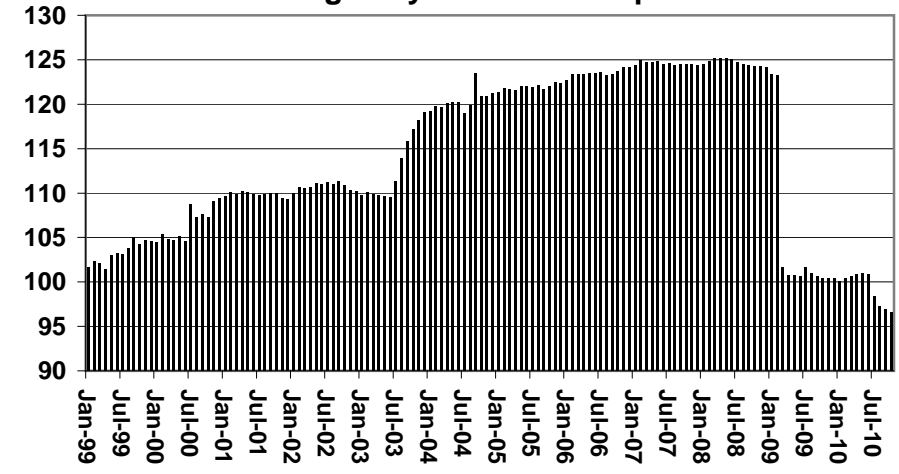
Recipients



Payments



Average Payment Per Recipient



**TABLE 1A
CA-UP**

CASH ASSISTANCE UNEMPLOYED PARENT PROGRAM: ARIZONA 1

	OCTOBER 2010								CHANGE FROM			OCTOBER 2009		
					AVERAGE				SEPTEMBER 2010			OCTOBER 2009		
	FAMILIES (CASES)	PERSONS (RECIP.)	ADULTS	CHILDREN	TOTAL PAYMENTS	PAYMENT/ CASE	PAYMENT/ RECIP.		FAMILIES (CASES)	PERSONS (RECIP.)	TOTAL PAYMENTS	FAMILIES (CASES)	PERSONS (RECIP.)	TOTAL PAYMENTS
ARIZONA	634	2,291	961	1,330	175,414	276.68	76.57	33	69	4,518	(817)	(2,787)	(230,677)	
REGION														
MARICOPA	449	1,621	637	984	127,118	283.11	78.42	27	67	5,529	(541)	(1,717)	(144,334)	
NORTHERN	16	52	28	24	3,684	230.25	70.85	(1)	(1)	(530)	(47)	(183)	(15,463)	
APACHE	0	0	0	0	0	0.00	0.00	(1)	(4)	(335)	0	0	0	
COCONINO	0	0	0	0	0	0.00	0.00	(1)	(3)	(278)	(4)	(19)	(1,511)	
MOHAVE	13	44	24	20	3,011	231.62	68.43	1	6	83	(19)	(77)	(5,929)	
NAVAJO	3	8	4	4	673	224.33	84.13	0	0	0	(24)	(87)	(8,023)	
CENTRAL	58	200	97	103	14,443	249.02	72.22	3	8	283	(63)	(241)	(18,213)	
GILA	1	4	2	2	335	335.00	83.75	(1)	(2)	(220)	(1)	(2)	(220)	
LA PAZ	5	19	10	9	1,618	323.60	85.16	1	3	278	(2)	(5)	(317)	
PINAL	35	132	65	67	8,620	246.29	65.30	3	7	225	(60)	(234)	(17,676)	
YAVAPAI	3	4	1	3	548	182.67	137.00	(1)	(10)	(669)	(10)	(36)	(2,703)	
YUMA	14	41	19	22	3,322	237.29	81.02	(3)	(16)	(1,255)	(18)	(76)	(5,521)	
SOUTHERN	111	418	199	219	30,169	271.79	72.17	8	21	1,160	(138)	(534)	(44,443)	
COCHISE	2	8	2	6	460	230.00	57.50	1	4	159	(5)	(17)	(1,442)	
GRAHAM	1	3	2	1	278	0.00	0.00	0	0	0	(1)	(3)	(141)	
GREENLEE	0	0	0	0	0	0.00	0.00	0	0	0	0	0	0	
PIMA	108	407	195	212	29,431	272.51	72.31	7	17	1,001	(127)	(502)	(41,826)	
SANTA CRUZ	0	0	0	0	0	0.00	0.00	0	0	0	(5)	(12)	(1,034)	

1/EXCLUDES: PRIOR MONTH NET TOTALS OF: 88 CASES; 318 RECIPIENTS; \$35,621.
GRANT DIVERSION TOTALS OF: 0 CASES; \$0.
ZERO PAY TOTALS OF 23 CASES; 97 RECIPIENTS.

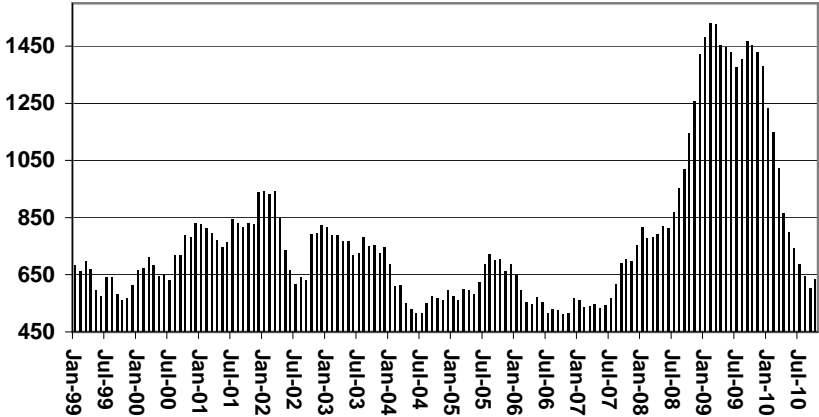
CASES WITH GRANT UNDER \$100 (SEE TABLE 1C).

	CURRENT MO. CASES	CURRENT MO. RECIP.	CURRENT MO. DOLLARS	PRIOR MO. CASES	PRIOR MO. RECIP	PRIOR MO. DOLLARS
PASQUAYAYQUI	9	29	\$2,451	3	10	\$851
WM APACHE	0	0	\$0	0	0	\$0
SALT RIVER	0	0	\$0	0	0	\$0
SAN CARLOS	0	0	\$0	0	0	\$0
HOPI	0	0	\$0	0	0	\$0
TOTAL	9	29	\$2,451	3	10	\$851

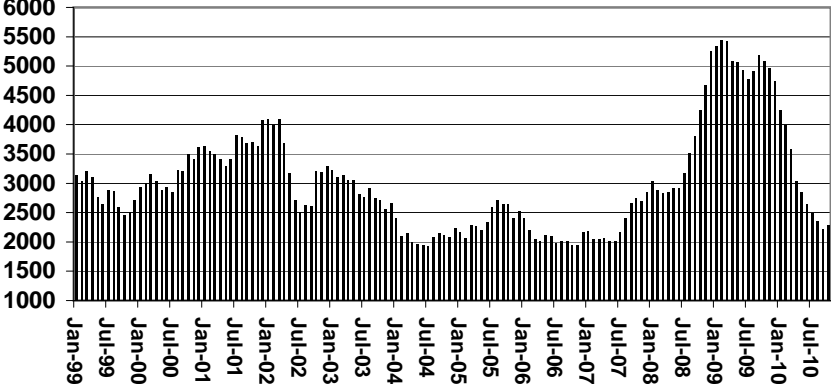
CHART 1A

CASH ASSISTANCE UNEMPLOYED PARENT PROGRAM COMPARISON OF CASES, RECIPIENTS, PAYMENTS & AVERAGE PAYMENTS FOR 1999, 2000, 2001, 2002, 2003, 2004, 2005, 2006, 2007, 2008, 2009, & 2010

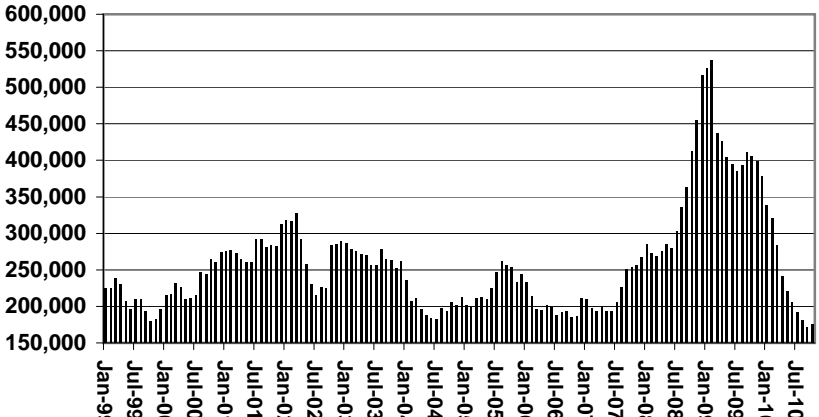
Cases



Recipients



Payments



Average Payment Per Recipient

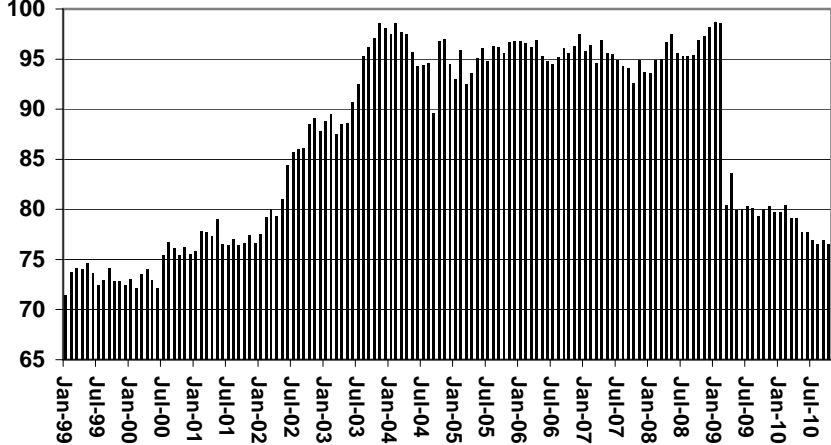


TABLE 1B 1/

**CASH ASSISTANCE: ARIZONA
CASES WITH GRANT UNDER \$100**

	OCTOBER 2010							CHANGE FROM			OCTOBER 2009		
					AVERAGE	AVERAGE	SEPTEMBER 2010						
	FAMILIES (CASES)	PERSONS (RECIP.)	ADULTS	CHILDREN	TOTAL PAYMENTS	PAYMENT/ CASE	PAYMENT/ RECIP.	FAMILIES (CASES)	PERSONS (RECIP.)	TOTAL PAYMENTS	FAMILIES (CASES)	PERSONS (RECIP.)	TOTAL PAYMENTS
ARIZONA	514	1,069	292	777	38,813	75.51	36.31	52	96	3,289	(422)	(722)	(26,940)
REGION													
MARICOPA	309	669	172	497	22,906	74.13	34.24	18	37	843	(294)	(521)	(17,711)
NORTHERN	41	76	24	52	2,656	64.78	34.95	14	17	498	(10)	(25)	(1,096)
APACHE	0	0	0	0	0	0.00	0.00	0	0	0	(1)	(2)	(30)
COCONINO	1	2	1	1	121	121.00	60.50	0	0	48	0	0	(101)
MOHAVE	29	53	17	36	1,774	61.17	33.47	9	9	399	(4)	(13)	(729)
NAVAJO	11	21	6	15	761	69.18	36.24	5	8	51	(5)	(10)	(236)
CENTRAL	42	79	23	56	3,168	75.43	40.10	1	5	(541)	(63)	(114)	(4,326)
GILA	3	4	2	2	154	51.33	38.50	2	2	42	(5)	(5)	(225)
LA PAZ	8	16	6	10	560	70.00	35.00	3	7	229	1	1	97
PINAL	14	26	5	21	1,199	85.64	46.12	(3)	(8)	(636)	(33)	(61)	(2,243)
YAVAPAI	7	10	1	9	472	67.43	47.20	(3)	(6)	(255)	(19)	(38)	(1,267)
YUMA	10	23	9	14	783	78.30	34.04	2	10	79	(7)	(11)	(688)
SOUTHERN	122	245	73	172	10,083	82.65	41.16	19	37	2,489	(55)	(62)	(3,807)
COCHISE	11	21	6	15	903	82.09	43.00	(3)	(6)	68	(14)	(26)	(1,112)
GRAHAM	3	6	1	5	293	97.67	48.83	1	0	140	(5)	(6)	(205)
GREENLEE	2	4	2	2	166	83.00	41.50	2	4	166	2	4	166
PIMA	99	196	59	137	7,992	80.73	40.78	15	26	1,689	(43)	(48)	(3,290)
SANTA CRUZ	7	18	5	13	729	104.14	40.50	4	13	426	5	14	634

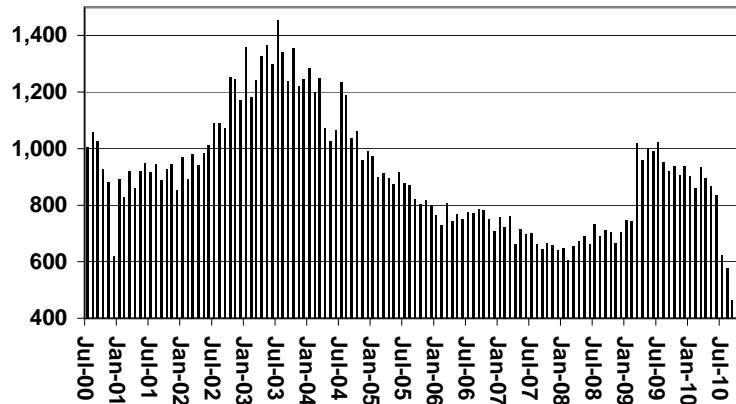
EXCLUDES: PRIOR MONTH NET TOTALS OF 708 CASES; 1,536 RECIPIENTS; \$43,288.

CHART 1B

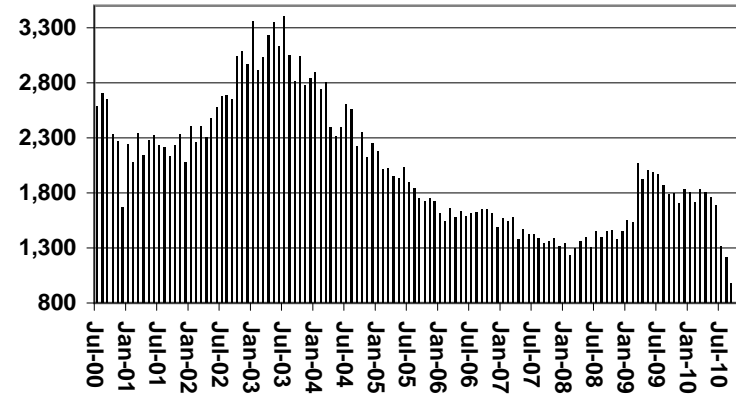
CASH ASSISTANCE PROGRAM CASES WITH GRANT UNDER \$100

FOR 1999, 2000, 2001, 2002, 2003, 2004, 2005, 2006, 2007, 2008, 2009, & 2010

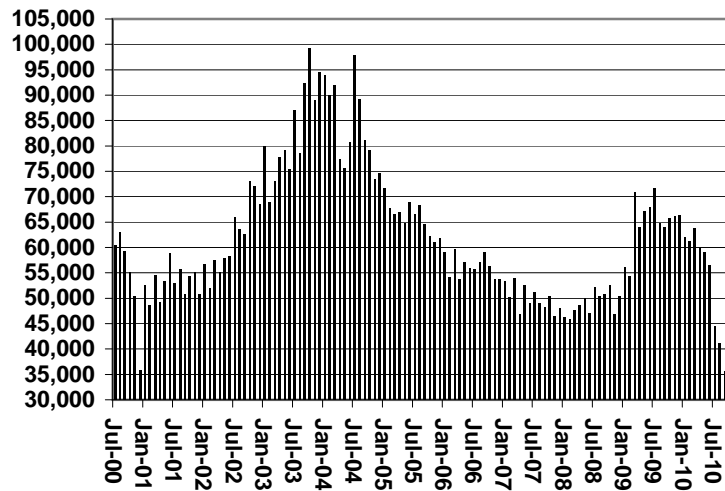
Cases



Recipients



Payments



Average Payment Per Recipient

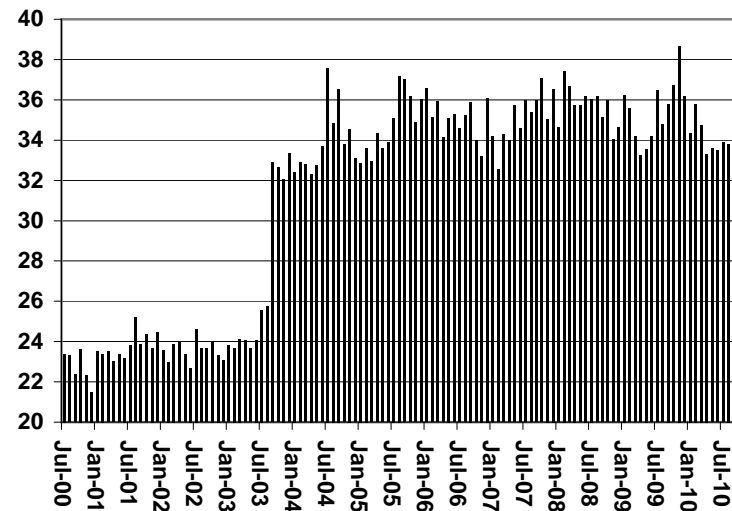


TABLE 1C 1/

CASH ASSISTANCE UNEMPLOYED PARENT PROGRAM: ARIZONA
 CASES WITH GRANT UNDER \$100

	OCTOBER 2010							CHANGE FROM			OCTOBER 2009		
	FAMILIES (CASES)	PERSONS (RECIP.)	ADULTS	CHILDREN	TOTAL PAYMENTS	AVERAGE	AVERAGE	FAMILIES (CASES)	PERSONS (RECIP.)	TOTAL PAYMENTS	FAMILIES (CASES)	PERSONS (RECIP.)	TOTAL PAYMENTS
						PAYMENT/ CASE	PAYMENT/ RECIP.						
ARIZONA	26	67	13	54	1,427	54.88	21.30	(2)	(13)	17	(31)	(87)	(1,831)
REGION													
MARICOPA	19	44	2	42	1,008	53.05	22.91	(4)	(22)	(151)	(30)	(82)	(1,827)
NORTHERN	3	9	5	4	197	65.67	21.89	2	6	176	3	9	197
APACHE	0	0	0	0	0	0.00	0.00	0	0	0	0	0	0
COCONINO	0	0	0	0	0	0.00	0.00	0	0	0	0	0	0
MOHAVE	3	9	5	4	197	65.67	21.89	2	6	176	3	9	197
NAVAJO	0	0	0	0	0	0.00	0.00	0	0	0	0	0	0
CENTRAL	2	6	2	4	71	35.50	11.83	1	3	53	0	3	(49)
GILA	0	0	0	0	0	0.00	0.00	0	0	0	0	0	0
LA PAZ	0	0	0	0	0	0.00	0.00	0	0	0	0	0	0
PINAL	1	3	2	1	18	18.00	6.00	0	0	0	1	3	18
YAVAPAI	0	0	0	0	0	0.00	0.00	0	0	0	(2)	(3)	(120)
YUMA	1	3	0	3	53	53.00	17.67	1	3	53	1	3	53
SOUTHERN	2	8	4	4	151	75.50	18.88	(1)	0	(61)	(4)	(17)	(152)
COCHISE	0	0	0	0	0	0.00	0.00	0	0	0	0	0	0
GRAHAM	0	0	0	0	0	0.00	0.00	0	0	0	0	0	0
GREENLEE	0	0	0	0	0	0.00	0.00	0	0	0	0	0	0
PIMA	2	8	4	4	151	75.50	18.88	(1)	0	(61)	(3)	(12)	(76)
SANTA CRUZ	0	0	0	0	0	0.00	0.00	0	0	0	(1)	(5)	(76)

EXCLUDES: PRIOR MONTH NET TOTALS OF 49 CASES; 161 RECIPIENTS; \$2,261.

CHART 1C

CASH ASSISTANCE UNEMPLOYED PARENT PROGRAM

CASES WITH GRANT UNDER \$100

FOR 1999, 2000, 2001, 2002, 2003, 2004, 2005, 2006, 2007, 2008, 2009, & 2010

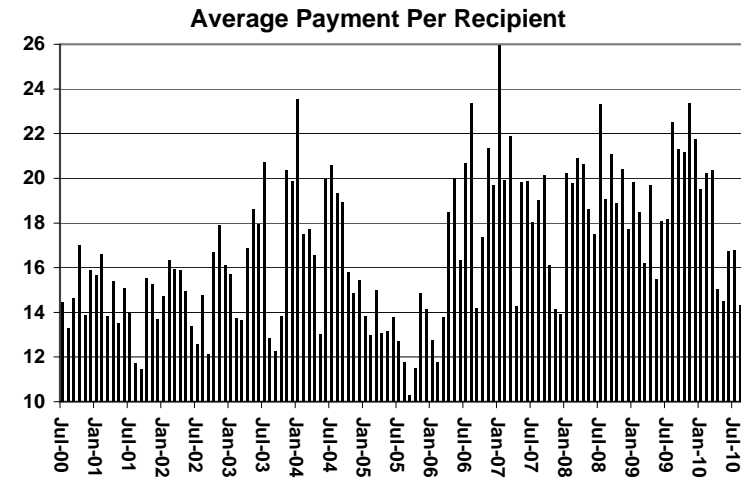
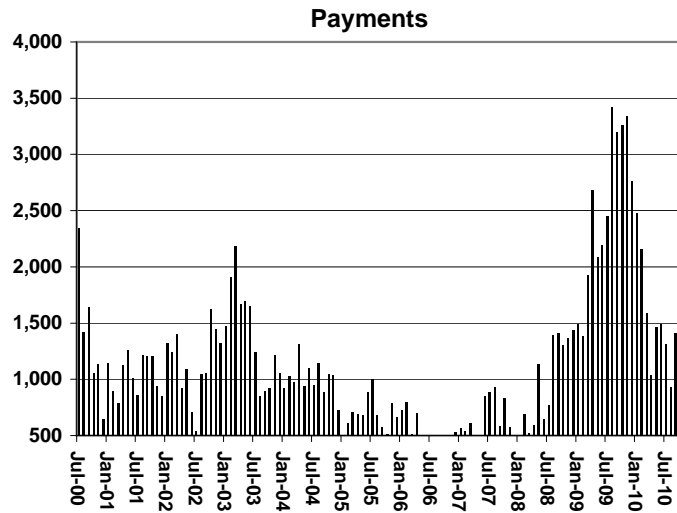
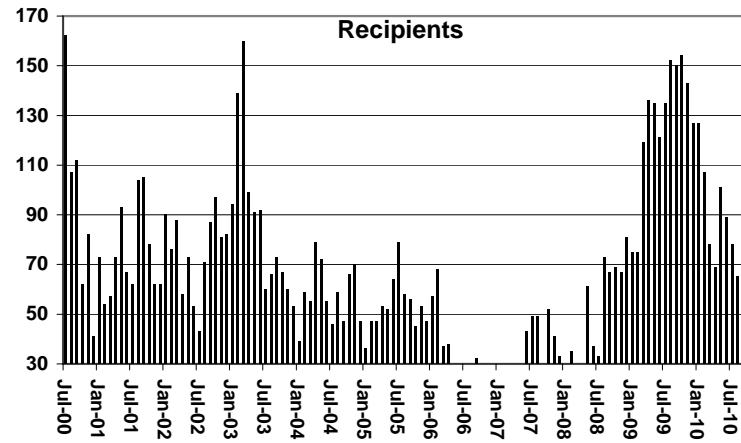
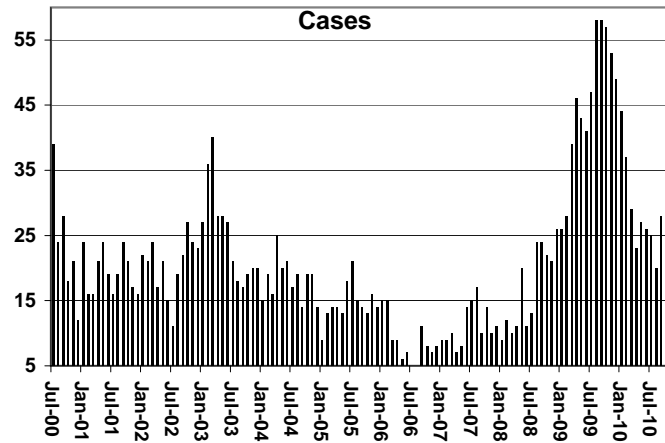


TABLE 4

TUBERCULOSIS CONTROL: ARIZONA 1/

	OCTOBER 2010					CHANGE FROM					
						SEPTEMBER 2010			OCTOBER 2009		
	NUMBER OF CASES	PERSONS (RECIP.)	TOTAL PAYMENTS	AVERAGE PAYMENT/ CASE	AVERAGE PAYMENT/ RECIP.	NUMBER OF CASES	PERSONS (RECIP.)	TOTAL PAYMENTS	NUMBER OF CASES	PERSONS (RECIP.)	TOTAL PAYMENTS
ARIZONA	1	1	173	173.00	173.00	0	0	0	(1)	(1)	(108)
REGION											
MARICOPA	1	1	173	173.00	173.00	0	0	0	0	0	0
NORTHERN	0	0	0	0.00	0.00	0	0	0	0	0	0
APACHE	0	0	0	0.00	0.00	0	0	0	0	0	0
COCONINO	0	0	0	0.00	0.00	0	0	0	0	0	0
MOHAVE	0	0	0	0.00	0.00	0	0	0	0	0	0
NAVAJO	0	0	0	0.00	0.00	0	0	0	0	0	0
CENTRAL	0	0	0	0.00	0.00	0	0	0	0	0	0
GILA	0	0	0	0.00	0.00	0	0	0	0	0	0
LA PAZ	0	0	0	0.00	0.00	0	0	0	0	0	0
PINAL	0	0	0	0.00	0.00	0	0	0	0	0	0
YAVAPAI	0	0	0	0.00	0.00	0	0	0	0	0	0
YUMA	0	0	0	0.00	0.00	0	0	0	0	0	0
SOUTHERN	0	0	0	0.00	0.00	0	0	0	(1)	(1)	(108)
COCHISE	0	0	0	0.00	0.00	0	0	0	(1)	(1)	(108)
GRAHAM	0	0	0	0.00	0.00	0	0	0	0	0	0
GREENLEE	0	0	0	0.00	0.00	0	0	0	0	0	0
PIMA	0	0	0	0.00	0.00	0	0	0	0	0	0
SANTA CRUZ	0	0	0	0.00	0.00	0	0	0	0	0	0

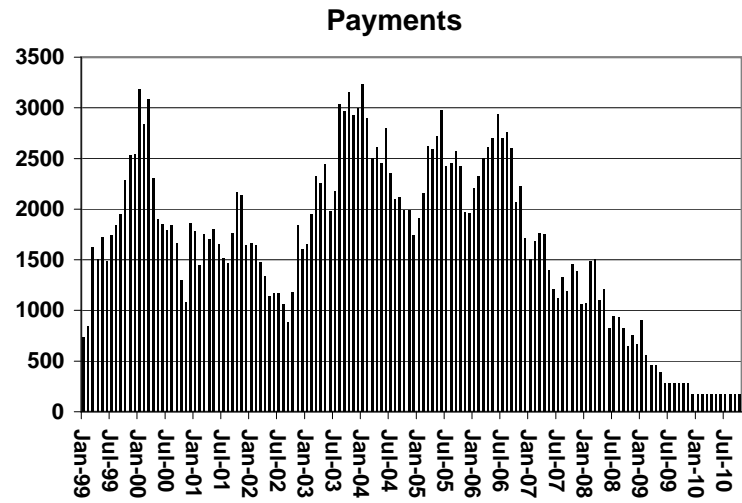
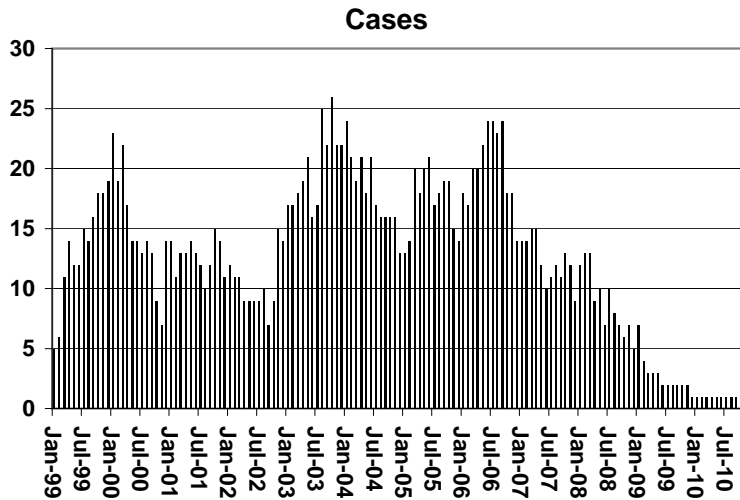
1/EXCLUDES: PRIOR MONTH NET TOTALS OF : 0 CASES; 0 RECIPIENTS; \$0.

CHART 4

TUBERCULOSIS CONTROL PROGRAM

COMPARISON OF CASES, PAYMENTS & AVERAGE PAYMENTS

FOR 1999, 2000, 2001, 2002, 2003, 2004, 2005, 2006, 2007, 2008, 2009, & 2010



Average Payment Per Case

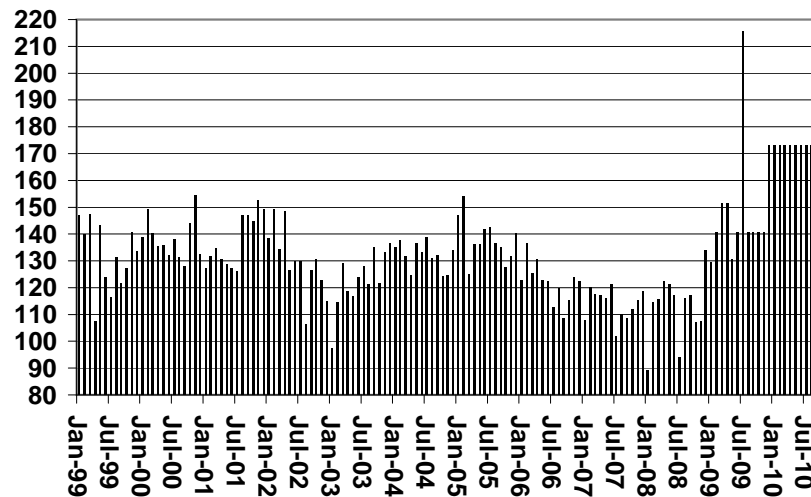


TABLE 6

SUPPLEMENTAL NUTRITION ASSISTANCE PROGRAM: ARIZONA 1

	CHANGE FROM												
	OCTOBER 2010				SEPTEMBER 2010			OCTOBER 2009					
	HOUSEHOLDS	PERSONS	ADULTS	CHILDREN	TOTAL PAYMENTS ISSUANCE	AVERAGE PAYMT./ HOUSEHOLD	AVERAGE PAYMT./ PERSON	HOUSEHOLDS	PERSONS	TOTAL PAYMENTS ISSUANCE	HOUSEHOLDS	PERSONS	TOTAL PAYMENTS ISSUANCE
ARIZONA	461,881	1,055,205	546,471	508,734	134,747,976	291.74	127.70	5,414	10,795	1,299,608	48,597	83,043	7,372,120
REGION													
MARICOPA	249,661	571,325	278,669	292,656	73,305,605	293.62	128.31	3,263	7,285	897,838	27,323	47,436	3,364,466
NORTHERN	52,708	127,764	71,532	56,232	16,029,498	304.12	125.46	257	4	(25,076)	4,968	7,941	952,882
APACHE	9,874	27,360	14,715	12,645	3,377,708	342.08	123.45	19	(136)	(49,155)	2,954	6,480	797,641
COCONINO	9,583	23,612	12,597	11,015	2,913,035	303.98	123.37	4	(194)	(41,255)	674	(860)	(106,317)
MOHAVE	20,265	42,816	25,744	17,072	5,455,679	269.22	127.42	148	199	47,562	2,786	7,131	806,437
NAVAJO	12,986	33,976	18,476	15,500	4,283,076	329.82	126.06	86	135	17,772	(1,446)	(4,810)	(544,879)
CENTRAL	60,238	141,766	77,106	64,660	17,764,201	294.90	125.31	469	803	57,942	5,389	9,310	1,032,241
GILA	5,981	12,972	7,612	5,360	1,714,890	286.72	132.20	46	136	18,628	466	455	54,692
LA PAZ	1,955	3,994	2,312	1,682	513,713	262.77	128.62	8	55	7,017	169	229	21,713
PINAL	21,472	52,645	27,489	25,156	6,716,169	312.79	127.57	290	582	47,993	1,415	2,356	192,156
YAVAPAI	14,559	29,349	17,647	11,702	3,655,774	251.10	124.56	181	281	21,078	1,815	3,065	311,531
YUMA	16,271	42,806	22,046	20,760	5,163,655	317.35	120.63	(56)	(251)	(36,774)	1,524	3,205	452,149
SOUTHERN	99,274	214,350	119,164	95,186	27,648,672	278.51	128.99	1,425	2,703	368,904	10,917	18,356	2,022,531
COCHISE	10,355	22,370	12,679	9,691	2,804,425	270.83	125.37	109	119	18,951	1,019	1,927	246,431
GRAHAM	3,429	7,954	4,446	3,508	1,029,266	300.17	129.40	79	154	22,035	483	795	149,203
GREENLEE	483	1,057	602	455	132,141	273.58	125.02	(11)	(14)	(2,513)	10	(55)	3,217
PIMA	80,600	171,222	95,474	75,748	22,259,878	276.18	130.01	1,146	2,246	296,956	9,404	15,807	1,631,706
SANTA CRUZ	4,407	11,747	5,963	5,784	1,422,962	322.89	121.13	102	198	33,475	1	(118)	(8,026)

1/EXCLUDES: PRIOR MONTH NET TOTALS OF : 16,994 CASES; 40,841 RECIPIENTS; \$3,778,321.

AGED CANCELATIONS: 9,321 CASES; 11,992 RECIPIENTS; 566,394.

SNAP CONVERSIONS: 0 CASES; 0 RECIPIENTS; \$0.

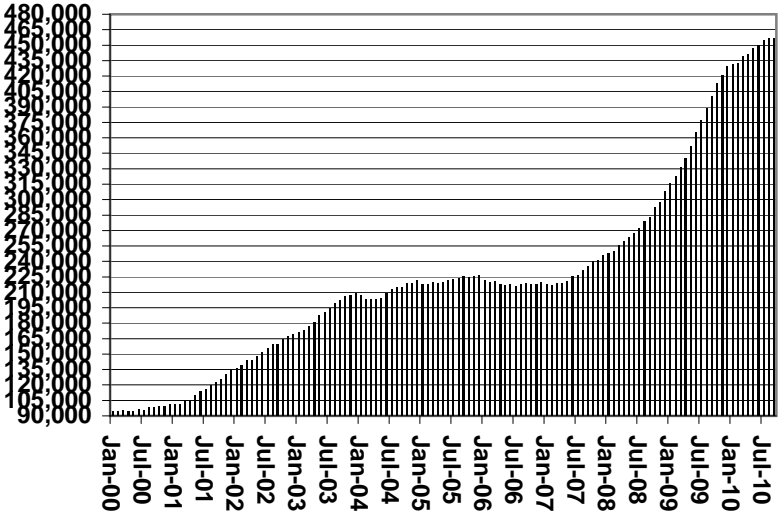
SNAP CHILD ONLY: 36,310 CASES; 87,670 RECIPIENTS; \$11,651,574.

SNAP ZERO PAY: 13,440 CASES; 54,753 RECIPIENTS.

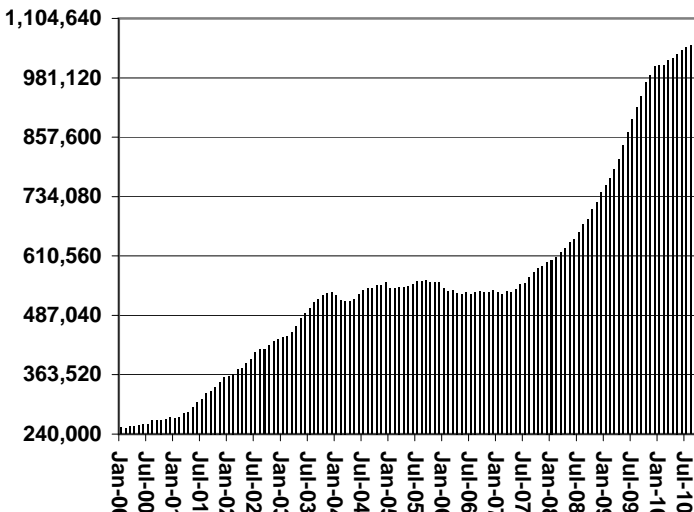
CHART 6

SUPPLEMENTAL NUTRITION ASSISTANCE PROGRAM (SNAP) COMPARISON OF HOUSEHOLDS, RECIPIENTS, PAYMENTS & AVERAGE PAYMENTS FOR 1999, 2000, 2001, 2002, 2003, 2004, 2005, 2006, 2007, 2008, 2009, & 2010

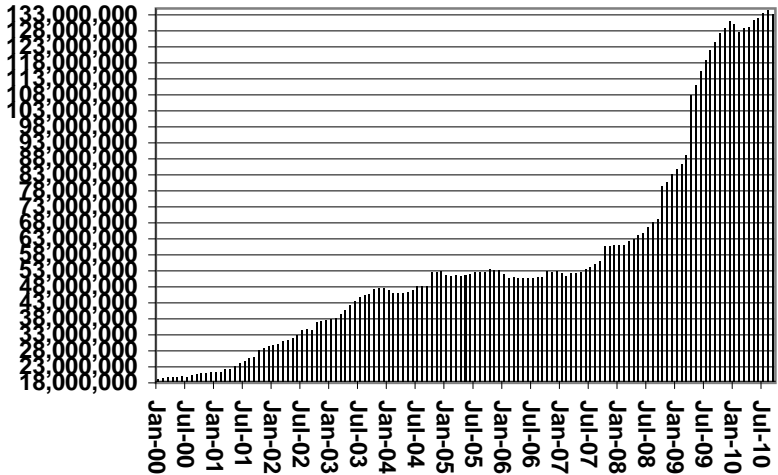
Households



Recipients



Payments



Average Payment Per Household

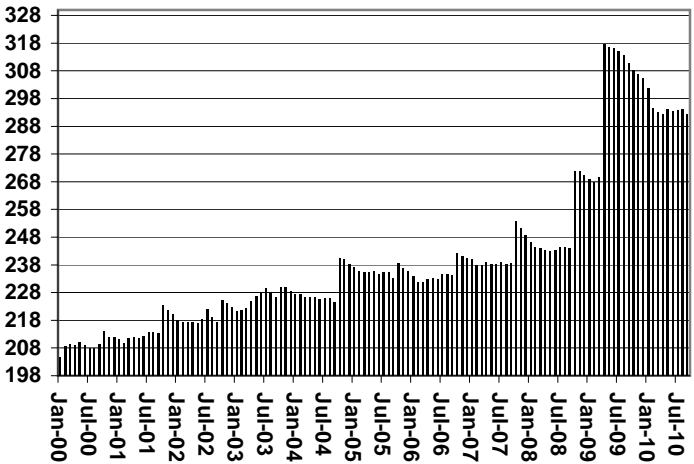


TABLE 7A
MEDICAL ASSISTANCE PROGRAM
RECIPIENTS

OCTOBER 2010

	SOBRA WOMAN 133% FPL	SOBRA CHILD	ADULT W/O CHILD 100% FPL	FOSTER CARE	1931 36% FPL	FEDERAL EMERGENCY SERVICES	INFANTS	ADULT W/O CHILD 40% FPL	MEDICAL W/SPEND DOWN	SOBRA WOMAN 100% FPL	SOBRA CHILD 100% FPL	TRANSITIONAL MEDICAL T1 - T4	1931 100% FPL	YATI	OTHER	TOTAL CASES
ARIZONA	11,337	71,623	64,746	12,119	342,150	52,542	47,772	174,075	7,614	3,795	230,655	43,625	127,646	337	27,944	1,217,980
REGION																
MARICOPA	6,150	40,672	31,631	6,343	189,390	40,800	28,620	88,915	4,158	1,895	134,476	22,856	66,312	187	14,448	676,853
NORTHERN	1,205	7,862	7,663	644	44,360	1,106	4,931	25,792	1,015	577	23,483	5,717	15,115	23	2,962	142,455
APACHE	196	1,578	1,074	34	11,379	88	973	5,781	137	115	4,313	1,156	2,733	0	412	29,969
COCONINO	281	1,527	1,676	133	8,385	337	1,082	4,778	169	108	4,967	1,223	3,144	13	419	28,242
MOHAVE	384	2,394	3,113	331	11,794	441	1,510	8,242	482	198	8,370	1,930	5,282	6	1,549	46,026
NAVAJO	344	2,363	1,800	146	12,802	240	1,366	6,991	227	156	5,833	1,408	3,956	4	582	38,218
CENTRAL	1,796	9,706	10,022	1,509	44,466	4,140	6,079	22,513	1,126	590	29,793	6,178	19,149	36	4,340	161,443
GILA	127	732	789	100	4,558	123	535	2,658	93	43	1,991	378	1,389	0	347	13,863
LA PAZ	50	276	285	17	1,219	123	145	855	22	13	746	208	424	0	167	4,550
PINAL	634	4,151	2,944	619	18,342	1,200	2,220	8,541	403	185	10,443	1,933	6,154	14	1,268	59,051
YAVAPAI	397	1,808	2,799	469	7,558	1,151	1,203	5,259	294	116	6,238	1,671	4,100	17	1,252	34,332
YUMA	588	2,739	3,205	304	12,789	1,543	1,976	5,200	314	233	10,375	1,988	7,082	5	1,306	49,647
SOUTHERN	2,186	13,383	15,430	3,623	63,934	6,496	8,142	36,855	1,315	733	42,903	8,874	27,070	91	6,194	237,229
COCHISE	242	1,237	1,743	243	6,972	447	813	3,330	167	87	4,358	991	2,838	2	868	24,338
GRAHAM	118	505	543	73	2,766	34	336	1,448	70	30	1,483	279	938	2	165	8,790
GREENLEE	20	59	67	8	438	2	54	210	8	5	227	54	125	2	31	1,310
PIMA	1,697	10,882	12,109	3,271	50,293	5,509	6,506	30,717	997	543	33,624	7,014	21,064	84	4,653	188,963
SANTA CRUZ	109	700	968	28	3,465	504	433	1,150	73	68	3,211	536	2,105	1	477	13,828

TABLE 7B
MEDICAL ASSISTANCE PROGRAM
RECIPIENTS

CHANGE FROM
SEPTEMBER 2010

	SOBRA WOMAN 133% FPL	SOBRA CHILD	ADULT W/O CHILD 100% FPL	FOSTER CARE	1931 36% FPL	FEDERAL EMERGENCY SERVICES	INFANTS	ADULT W/O CHILD 40% FPL	MEDICAL W/SPEND DOWN	SOBRA WOMAN 100% FPL	SOBRA CHILD 100% FPL	TRANSITIONAL MEDICAL T1 - T4	1931 100% FPL	YATI	OTHER	TOTAL CASES
ARIZONA	372	3,084	2,768	62	3,669	(743)	175	3,419	338	114	3,059	279	5,634	(21)	241	22,450
REGION																
MARICOPA	268	2,289	1,560	51	2,796	(700)	132	2,186	175	50	1,886	(296)	3,623	(13)	184	14,191
NORTHERN	20	148	271	4	(95)	(61)	35	225	51	27	145	251	443	0	36	1,500
APACHE	0	28	20	(1)	(143)	(2)	4	9	15	8	68	132	76	0	17	231
COCONINO	0	75	101	2	(132)	(3)	10	36	13	5	6	70	109	(1)	5	296
MOHAVE	(1)	58	109	2	174	(40)	7	91	21	7	51	(38)	120	1	19	581
NAVAJO	21	(13)	41	1	6	(16)	14	89	2	7	20	87	138	0	(5)	392
CENTRAL	4	209	351	9	550	(4)	51	370	(34)	(6)	294	167	641	(2)	6	2,606
GILA	4	3	27	(3)	(61)	(9)	(6)	(5)	(4)	0	68	3	57	0	6	80
LA PAZ	(7)	7	2	0	44	6	6	(14)	(4)	1	11	12	(10)	0	(1)	53
PINAL	18	130	124	2	334	37	21	220	(5)	(8)	89	77	280	1	10	1,330
YAVAPAI	(2)	4	65	11	144	(21)	8	82	(24)	2	32	8	131	(2)	(24)	414
YUMA	(9)	65	133	(1)	89	(17)	22	87	3	(1)	94	67	183	(1)	15	729
SOUTHERN	80	438	586	(2)	418	22	(43)	638	146	43	734	157	927	(6)	15	4,153
COCHISE	2	(27)	32	4	30	(8)	(18)	48	13	14	63	19	54	(1)	2	227
GRAHAM	6	5	(8)	3	22	(8)	(2)	24	10	3	58	(62)	44	0	3	98
GREENLEE	3	(4)	5	0	(7)	(1)	0	7	2	1	4	11	(2)	0	(7)	12
PIMA	62	446	519	(9)	368	17	(10)	494	97	23	517	178	709	(5)	12	3,418
SANTA CRUZ	7	18	38	0	5	22	(13)	65	24	2	92	11	122	0	5	398

TABLE 7C
MEDICAL ASSISTANCE PROGRAM
RECIPIENTS

CHANGE FROM

OCTOBER 2009

	SOBRA WOMAN 133% FPL	SOBRA CHILD	ADULT W/O CHILD 100% FPL	FOSTER CARE	1931 36% FPL	FEDERAL EMERGENCY SERVICES	INFANTS	ADULT W/O CHILD 40% FPL	MEDICAL W/SPEND DOWN	SOBRA WOMAN 100% FPL	SOBRA CHILD 100% FPL	TRANSITIONAL MEDICAL T1 - T4	3E 1931 100% FPL	YATI	OTHER	TOTAL CASES
ARIZONA	537	3,862	9,056	587	2,924	(37,294)	(2,887)	24,493	953	(131)	9,775	7,173	13,645	18	2,347	35,058
REGION																
MARICOPA	454	2,648	5,673	442	832	(29,683)	(1,385)	14,964	512	(153)	6,433	4,232	9,460	(1)	1,549	15,977
NORTHERN	(73)	389	458	45	581	(826)	(308)	2,743	115	38	148	926	341	7	242	4,826
APACHE	(9)	169	49	(6)	119	(50)	(46)	745	11	7	(149)	350	(40)	0	41	1,191
COCONINO	(26)	65	139	(8)	68	(213)	(116)	362	29	7	(18)	160	82	4	63	598
MOHAVE	(43)	122	208	50	242	(417)	(90)	1,081	31	(2)	300	271	208	3	117	2,081
NAVAJO	5	33	62	9	152	(146)	(56)	555	44	26	15	145	91	0	21	956
CENTRAL	96	275	1,060	76	1,666	(1,735)	(239)	2,296	156	(14)	1,310	353	1,481	10	230	7,021
GILA	5	29	77	7	56	(53)	(21)	120	(1)	7	(6)	(29)	74	0	30	295
LA PAZ	21	53	20	4	(68)	(47)	(5)	102	(6)	(8)	61	27	41	0	10	205
PINAL	61	185	428	23	675	(560)	6	941	161	(14)	929	266	665	2	25	3,793
YAVAPAI	(22)	(17)	311	20	296	(596)	(194)	325	(25)	(11)	226	195	290	6	126	930
YUMA	31	25	224	22	707	(479)	(25)	808	27	12	100	(106)	411	2	39	1,798
SOUTHERN	60	550	1,865	24	(155)	(5,050)	(955)	4,490	170	(2)	1,884	1,662	2,363	2	326	7,234
COCHISE	(5)	(22)	121	(12)	253	(179)	(88)	369	48	5	277	8	185	(4)	82	1,038
GRAHAM	9	20	16	0	212	(30)	(72)	232	10	(2)	(15)	(29)	(132)	1	21	241
GREENLEE	4	(11)	(7)	0	59	(7)	(10)	42	(3)	(3)	(55)	20	(57)	2	9	(17)
PIMA	40	482	1,688	38	(789)	(4,727)	(729)	3,744	103	(17)	1,631	1,571	2,185	3	158	5,381
SANTA CRUZ	12	81	47	(2)	110	(107)	(56)	103	12	15	46	92	182	0	56	591

CHART 7

MEDICAL ASSISTANCE PROGRAM

COMPARISON OF RECIPIENTS

FOR 1999, 2000, 2001, 2002, 2003, 2004, 2005, 2006, 2007, 2008, 2009, & 2010

Total Recipients

