



DEPARTMENT OF ECONOMIC SECURITY

Your Partner For A Stronger Arizona

State of Arizona

Department of Economic Security

Family Assistance Administration

Statistical Bulletin

November, 2010

Phone: (602) 542-3678

<https://www.azdes.gov/appreports.aspx>

**** STATISTICAL BULLETIN ****
ARIZONA DEPARTMENT OF ECONOMIC SECURITY
FAMILY ASSISTANCE ADMINISTRATION
BOX 6123, PHOENIX, ARIZONA 85005
PHONE (602) 542-3678

NOVEMBER 2010

THIS ISSUE OF THE STATISTICAL BULLETIN COMPARES NOVEMBER 2010 DATA FOR EACH OF THE INDICATED PROGRAMS WITH THE INFORMATION FOR OCTOBER 2010 AND NOVEMBER 2009. STATEWIDE SUMMARIES OF ACTIVITY WITHIN EACH OF THE SPECIFIC PROGRAMS FOR THIS REPORT PERIOD ARE DISCUSSED BELOW. THE TABLES COMPARE CURRENT AND PRIOR MONTH DATA. DISTRICT AND COUNTY COMPARISONS ARE PROVIDED WITHIN THIS BULLETIN

TANF SUMMARY

COMPARING TO OCTOBER 2010, NOVEMBER 2010 CASES DECREASED BY 128 (0.64%) TO 19,747. RECIPIENTS DECREASED BY 92 (0.20%) TO 44,949. PAYMENTS DECREASED BY \$12,173 (0.29%) TO \$4,223,006. AVERAGE PAYMENT PER CASE INCREASED BY \$0.77 (0.36%) TO \$0.00. PAYMENT PER RECIPIENT DECREASED BY \$0.08 (0.09%) TO \$93.95.

COMPARING TO NOVEMBER 2009, NOVEMBER 2010 CASES DECREASED BY 20,251 (50.63%). RECIPIENTS DECREASED BY 42,638 (48.68%). TOTAL PAYMENTS DECREASED BY \$4,351,732 (50.75%). THE AVERAGE PAYMENT PER CASE DECREASED BY \$0.52 (0.24%). THE AVERAGE PAYMENT PER RECIPIENT DECREASED BY \$3.95 (4.03%).

CASH ASSISTANCE (CA)

COMPARING TO OCTOBER 2010, NOVEMBER 2010 CASES DECREASED BY 63 (0.34%) TO 18,638. RECIPIENTS INCREASED BY 25 (0.06%) TO 41,639. PAYMENTS DECREASED BY \$3,524 (0.09%) TO \$4,016,001. AVERAGE PAYMENT PER CASE INCREASED BY \$0.53 (0.25%) TO \$215.47. PAYMENT PER RECIPIENT DECREASED BY \$0.14 (0.14%) TO \$96.45.

COMPARING TO NOVEMBER 2009, NOVEMBER 2010 CASES DECREASED BY 18,972 (50.44%). RECIPIENTS DECREASED BY 39,135 (48.45%). TOTAL PAYMENTS DECREASED BY \$4,090,877 (50.46%). THE AVERAGE PAYMENT PER CASE DECREASED BY \$0.08 (0.04%). THE AVERAGE PAYMENT PER RECIPIENT DECREASED BY \$3.91 (3.90%).

CASH ASSISTANCE UNEMPLOYED PARENT PROGRAM (CA-UP)

COMPARING TO OCTOBER 2010, NOVEMBER 2010 CASES DECREASED BY 27 (4.26%) TO 607. RECIPIENTS DECREASED BY 67 (2.92%) TO 2,224. PAYMENTS DECREASED BY \$4,975 (2.84%) TO \$170,439. AVERAGE PAYMENT PER CASE INCREASED BY \$4.11 (1.49%) TO \$280.79. PAYMENT PER RECIPIENT INCREASED BY \$0.07 (0.10%) TO \$76.64.

COMPARING TO NOVEMBER 2009, NOVEMBER 2010 CASES DECREASED BY 822 (57.52%). RECIPIENTS DECREASED BY 2,738 (55.18%). TOTAL PAYMENTS DECREASED BY \$228,009 (57.22%). THE AVERAGE PAYMENT PER CASE INCREASED BY \$1.97 (0.71%), THE AVERAGE PAYMENT PER RECIPIENT DECREASED BY \$3.66 (4.56%).

CASH ASSISTANCE WITH GRANT UNDER \$100 (CA-MOE)

COMPARING TO OCTOBER 2010, NOVEMBER 2010 CASES DECREASED BY 45 (8.75%) TO 469. RECIPIENTS DECREASED BY 74 (6.92%) TO 995. PAYMENTS DECREASED BY \$3,914 (10.08%) TO \$34,899. AVERAGE PAYMENT PER CASE DECREASED BY \$1.10 (1.46%) TO \$74.41. AVERAGE PAYMENT PER RECIPIENT DECREASED BY \$1.24 (3.42%) TO \$35.07.

COMPARING TO NOVEMBER 2009, NOVEMBER 2010 CASES DECREASED BY 437 (48.23%). RECIPIENTS DECREASED BY 713 (41.74%). TOTAL PAYMENTS DECREASED BY \$31,170 (47.18%). THE AVERAGE PAYMENT PER CASE INCREASED BY \$1.49 (2.04%). THE AVERAGE PAYMENT PER RECIPIENT DECREASED BY \$3.61 (9.33%).

CASH ASSISTANCE UNEMPLOYED PARENT PROGRAM WITH GRANT UNDER \$100 (CA-UP-MOE) NEW PROGRAM STARTING 7/01

COMPARING TO OCTOBER 2010, NOVEMBER 2010 CASES INCREASED BY 7 (26.92%) TO 33. RECIPIENTS INCREASED BY 24 (35.82%) TO 91. PAYMENTS INCREASED BY \$240 (16.82%) TO \$1,667. AVERAGE PAYMENT PER CASE DECREASED BY \$4.36 (7.94%) TO \$50.52. PAYMENT PER RECIPIENT DECREASED BY \$2.98 (13.99%) TO \$18.32.

COMPARING TO NOVEMBER 2009, NOVEMBER 2010 CASES DECREASED BY 20 (37.74%). RECIPIENTS DECREASED BY 52 (3.64%). TOTAL PAYMENTS DECREASED BY \$1,676 (50.13%). THE AVERAGE PAYMENT PER CASE DECREASED BY \$12.56 (19.91%). THE AVERAGE PAYMENT PER RECIPIENT DECREASED BY \$5.06 (21.64%).

TUBERCULOSIS CONTROL PROGRAM (TC)

COMPARING TO OCTOBER 2010, NOVEMBER 2010 CASES INCREASED BY 0 (0.00%) TO 1. RECIPIENTS INCREASED BY 0 (0.00%) TO 1. PAYMENTS INCREASED BY \$0 (0.00%) TO \$173. AVERAGE PAYMENT PER CASE INCREASED BY \$40.86 (23.62%) TO \$213.86. AVERAGE PAYMENT PER RECIPIENT INCREASED BY \$0.00 (0.00%) TO \$173.00.

COMPARING TO NOVEMBER 2009, NOVEMBER 2010 CASES DECREASED BY 1 (50.00%). RECIPIENTS DECREASED BY 1 (50.00%). TOTAL PAYMENTS DECREASED BY \$108 (38.43%). THE AVERAGE PAYMENT PER CASE INCREASED BY \$73.36 (52.21%). THE AVERAGE PAYMENT PER RECIPIENT INCREASED BY \$32.50 (23.13%).

SUPPLEMENTAL NUTRITION ASSISTANCE PROGRAM (SNAP)

COMPARING TO OCTOBER 2010, NOVEMBER 2010 SUPPLEMENTAL NUTRITION ASSISTANCE HOUSEHOLDS DECREASED BY 2,281 (0.49%) TO 459,600. PERSONS RECEIVING SUPPLEMENTAL NUTRITION ASSISTANCE DECREASED BY 5,024 (0.48%) TO 1,050,181. TOTAL COUPON ISSUANCE DECREASED BY \$884,726 (0.66%) TO \$133,863,250. THE AVERAGE HOUSEHOLD ALLOTMENT DECREASED BY \$0.48 (0.16%) TO \$291.26. THE AVERAGE ALLOTMENT PER PERSON DECREASED BY \$0.23 (0.18%) TO \$127.47.

COMPARING TO NOVEMBER 2009, NOVEMBER 2010 SUPPLEMENTAL NUTRITION ASSISTANCE HOUSEHOLDS INCREASED BY 39,251 (9.34%). PERSONS RECEIVING SUPPLEMENTAL NUTRITION ASSISTANCE INCREASED BY 63,905 (6.48%). TOTAL COUPON ISSUANCE INCREASED BY \$4,880,879 (3.78%). THE AVERAGE ALLOTMENT PER HOUSEHOLD DECREASED BY \$15.59 (5.08%). THE AVERAGE ALLOTMENT PER PERSON DECREASED BY \$3.31 (2.53%).

MEDICAL ASSISTANCE PROGRAM (MA) NEW TABLE INCLUDES PROP. 204 CATEGORIES

COMPARING TO JANUARY 2010, FEBRUARY 2010 TOTAL RECIPIENTS TOTAL RECIPIENTS DECREASED BY 6,946 (0.59%). SOBRA WOMEN AT 140% FPL DECREASED BY 248 (2.41%). SOBRA CHILDREN DECREASED BY 812 (1.23%). ADULTS W/O CHILD AT 100% INCREASED BY 446 (0.76%). FOSTER CARE INCREASED BY 69 (0.59%). 1931 AT 36% FPL DECREASED BY 4,919 (1.48%). EMERGENCY SERVICES DECREASED BY 5,083 (6.43%). INFANTS DECREASED BY 513 (1.02%). ADULT W/O CHILD AT 140% INCREASED BY 510 (0.33%). MEDICAL W/SPEND DOWN DECREASED BY 201 (3.10%). SOBRA WOMAN AT 100% INCREASED BY 99 (2.63%). SOBRA CHILD AT 100% INCREASED BY 902 (0.40%). TRANSITIONAL MEDICAL INCREASED BY 1,305 (3.04%). 1931 AT 100% INCREASED BY 1,355 (1.16%). YATI INCREASED BY 10 (3.02%). ALL OTHER CATEGORIES INCREASED BY 134 (0.51%).

COMPARING TO NOVEMBER 2009, NOVEMBER 2010 TOTAL RECIPIENTS TOTAL RECIPIENTS INCREASED BY 20,169 (1.70%). SOBRA WOMEN AT 140% FPL INCREASED BY 444 (4.28%). SOBRA CHILDREN INCREASED BY 3,787 (5.64%). ADULTS W/O CHILD AT 100% INCREASED BY 7,201 (12.67%). FOSTER CARE INCREASED BY 568 (4.88%). 1931 AT 36% FPL INCREASED BY 514 (0.15%). EMERGENCY SERVICES DECREASED BY 36,941 (41.90%). INFANTS DECREASED BY 3,468 (6.87%). ADULT W/O CHILD AT 140% INCREASED BY 20,497 (13.44%). MEDICAL W/SPEND DOWN INCREASED BY 765 (11.94%). SOBRA WOMAN AT 100% INCREASED BY 16 (0.42%). SOBRA CHILD AT 100% INCREASED BY 6,426 (2.89%). TRANSITIONAL MEDICAL INCREASED BY 6,406 (16.48%). 1931 AT 100% INCREASED BY 11,702 (10.19%). YATI INCREASED BY 14 (4.35%). ALL OTHER CATEGORIES INCREASED BY 2,238 (8.66%).

TANF SUMMARY

TABLES 1, 1A, 1B, & 1C: ARIZONA 1/

	NOVEMBER 2010							OCTOBER 2010			NOVEMBER 2009		
	FAMILIES (CASES)	PERSONS (RECIP.)	ADULTS	CHILDREN	TOTAL PAYMENTS	AVERAGE	AVERAGE	FAMILIES (CASES)	PERSONS (RECIP.)	TOTAL PAYMENTS	FAMILIES (CASES)	PERSONS (RECIP.)	TOTAL PAYMENTS
						PAYMENT/ CASE	PAYMENT/ RECIP.						
ARIZONA	19,747	44,949	12,300	32,649	4,223,006	213.86	93.95	(128)	(92)	(12,173)	(20,251)	(42,638)	(4,351,732)
REGION													
MARICOPA	12,246	28,554	7,714	20,840	2,627,077	214.53	92.00	(59)	(16)	(8,946)	(12,233)	(25,805)	(2,585,183)
NORTHERN	1,074	2,347	644	1,703	222,428	207.10	94.77	(48)	(126)	(8,339)	(1,882)	(4,634)	(486,941)
APACHE	39	74	17	57	7,351	188.49	99.34	(5)	(7)	(1,110)	37	69	6,912
COCONINO	85	206	53	153	18,261	214.84	88.65	3	13	282	(143)	(295)	(28,615)
MOHAVE	619	1,280	350	930	126,655	204.61	98.95	(19)	(60)	(3,167)	(597)	(1,206)	(119,828)
NAVAJO	331	787	224	563	70,161	211.97	89.15	(27)	(72)	(4,344)	(1,179)	(3,202)	(345,410)
CENTRAL	2,348	5,218	1,452	3,766	507,804	216.27	97.32	(50)	(111)	(12,559)	(2,157)	(4,470)	(450,721)
GILA	522	1,164	438	726	130,782	250.54	112.36	(19)	(48)	(3,516)	(212)	(394)	(47,242)
LA PAZ	90	211	59	152	18,817	209.08	89.18	(5)	(21)	(1,315)	(85)	(169)	(15,677)
PINAL	930	2,089	548	1,541	190,127	204.44	91.01	(28)	(55)	(7,813)	(994)	(2,156)	(211,811)
YAVAPAI	292	573	123	450	57,303	196.24	100.01	(7)	(20)	(2,005)	(381)	(748)	(74,216)
YUMA	514	1,181	284	897	110,775	215.52	93.80	9	33	2,090	(485)	(1,003)	(101,775)
SOUTHERN	4,079	8,830	2,490	6,340	865,697	212.23	98.04	29	161	17,671	(3,979)	(7,729)	(828,887)
COCHISE	351	683	156	527	72,659	207.01	106.38	(9)	(12)	(317)	(453)	(901)	(93,293)
GRAHAM	211	407	132	275	49,611	235.12	121.89	(2)	6	1,449	(65)	(126)	(12,171)
GREENLEE	18	40	12	28	3,288	182.67	82.20	(1)	(3)	(278)	(5)	(6)	(1,338)
PIMA	3,381	7,458	2,137	5,321	717,230	212.14	96.17	44	179	17,267	(3,317)	(6,407)	(690,497)
SANTA CRUZ	118	242	53	189	22,909	194.14	94.67	(3)	(9)	(450)	(139)	(289)	(31,588)

1/EXCLUDES: PRIOR MONTH NET TOTALS OF 1,250 CASES; 3,106 RECIPIENTS; \$271,416.
 GRANT DIVERSION TOTALS OF: 1,667 CASES; \$1,261,515.
 ZERO PAY TOTALS OF 3,587 CASES; 10,491 RECIPIENTS.

RRP: 327 CASES; 533 RECIPIENTS; \$67,280.

1/INCLUDES: TANF CHILD ONLY: 8,069 CASES; 13,620 RECIPIENTS; \$1,535,128.

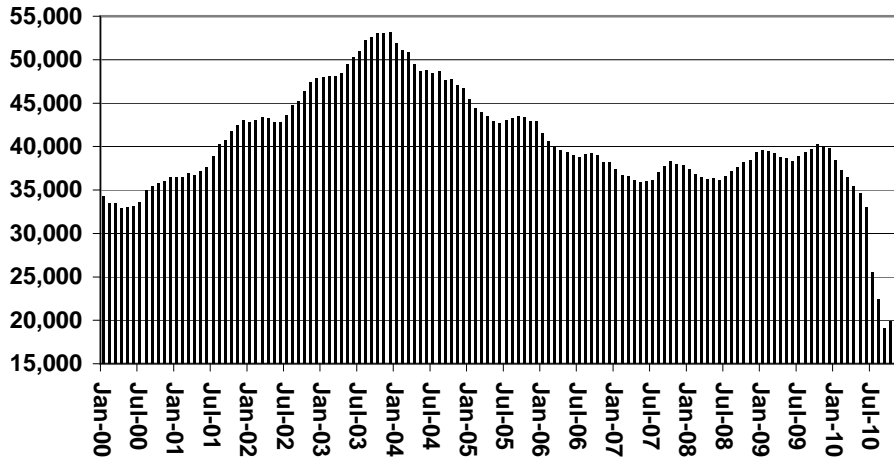
	CURRENT MO. CASES	CURRENT MO. RECIP.	CURRENT MO. DOLLARS	PRIOR MO. CASES	PRIOR MO. RECIP.	PRIOR MO. DOLLARS
PASQUA/YAQUI	260	720	\$76,117	24	65	\$8,246
WM APACHE	0	0	\$0	0	0	\$0
SALT RIVER	82	267	\$24,641	5	16	\$1,590
SAN CARLOS	526	1,164	\$136,803	15	31	\$2,119
HOPÍ	122	353	\$28,827	5	14	\$603
TOTAL	990	2,504	\$266,388	49	126	\$12,558

TANF SUMMARY

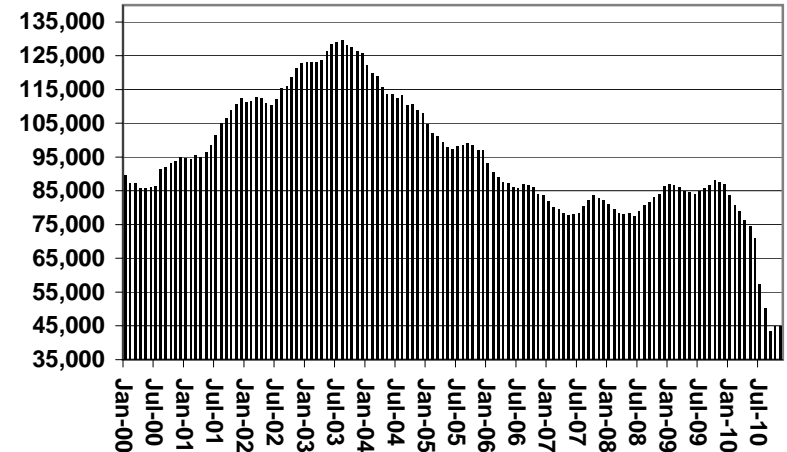
TABLES 1, 1A, 1B, & 1C

COMPARISON OF CASES, RECIPIENTS, PAYMENTS & AVERAGE PAYMENTS
FOR 2000, 2001, 2002, 2003, 2004, 2005, 2006, 2007, 2008, 2009, & 2010

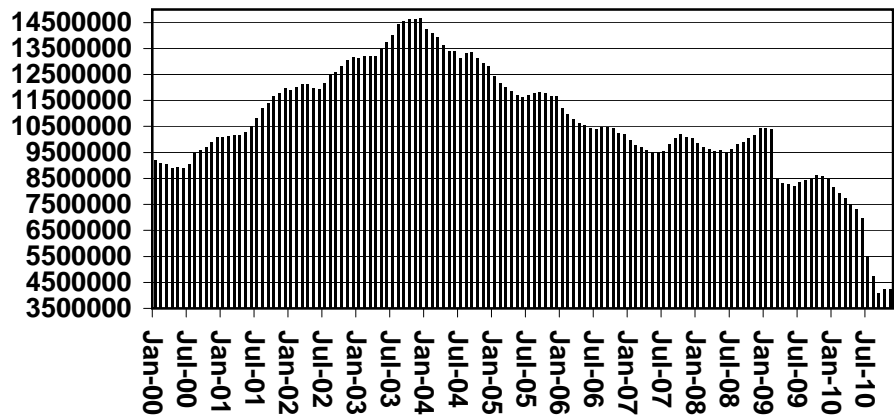
Cases



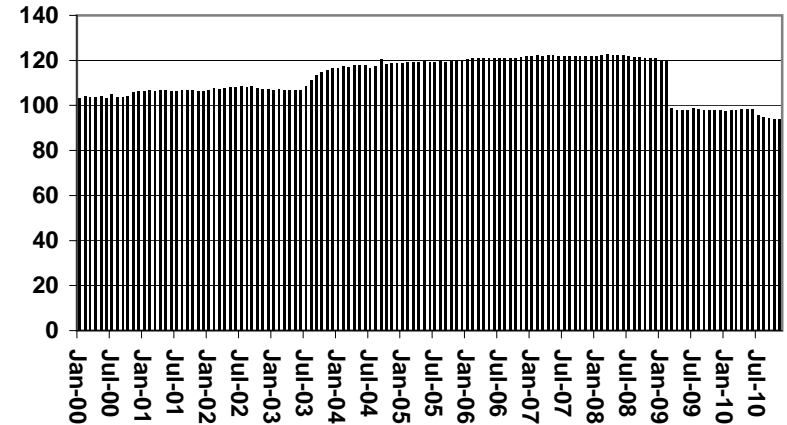
Recipients



Payments



Average Payments Per Recipient

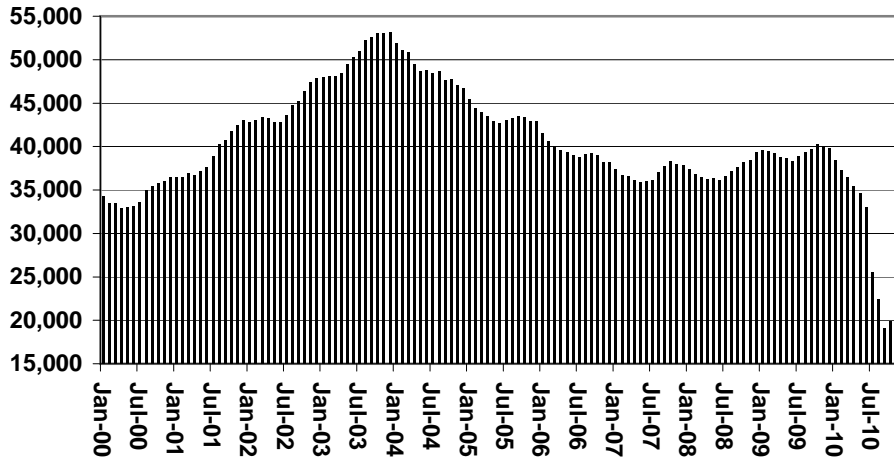


TANF SUMMARY

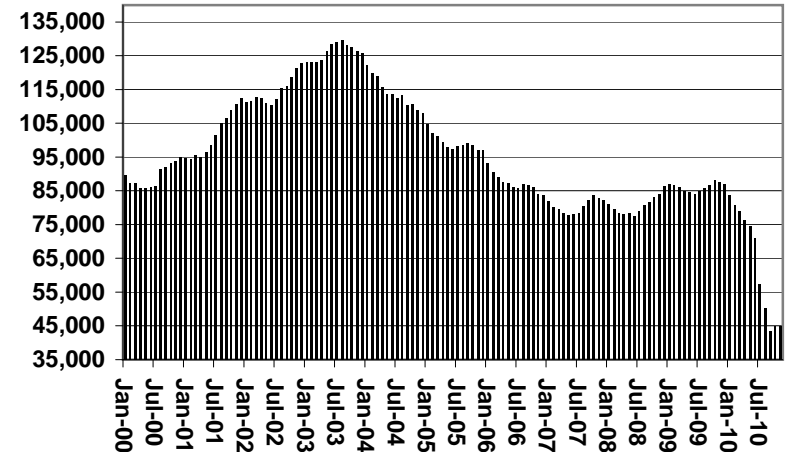
TABLES 1, 1A, 1B, & 1C

COMPARISON OF CASES, RECIPIENTS, PAYMENTS & AVERAGE PAYMENTS
FOR 2000, 2001, 2002, 2003, 2004, 2005, 2006, 2007, 2008, 2009, & 2010

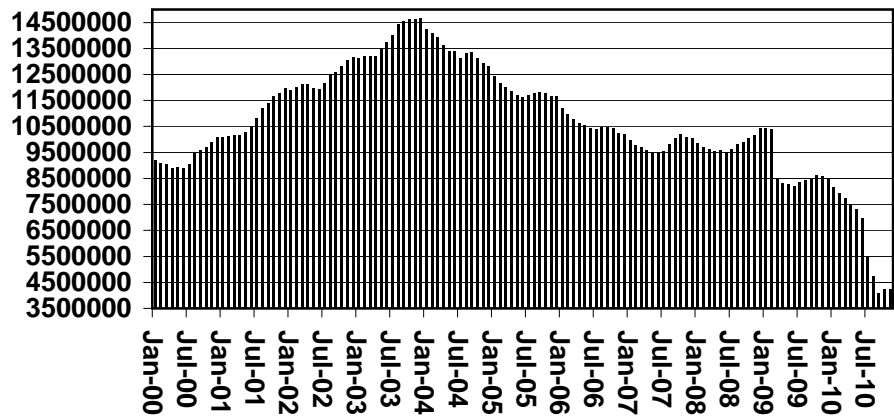
Cases



Recipients



Payments



Average Payments Per Recipient

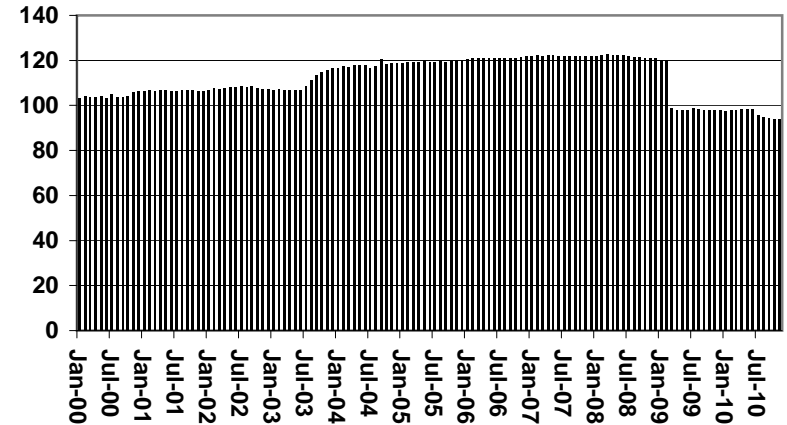


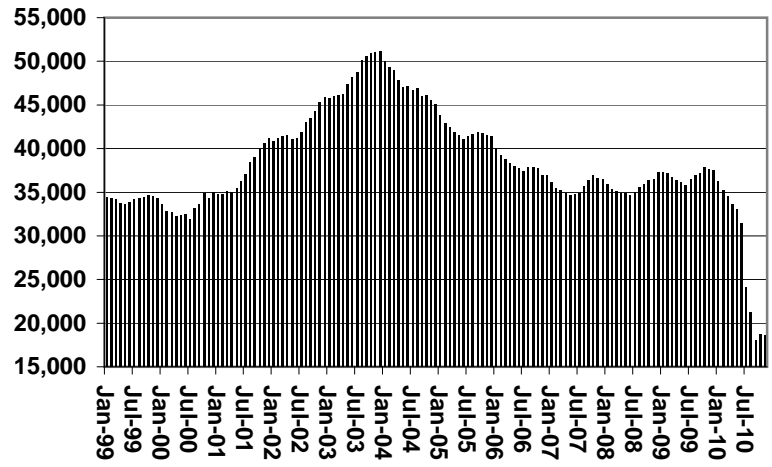
CHART 1

CASH ASSISTANCE PROGRAM

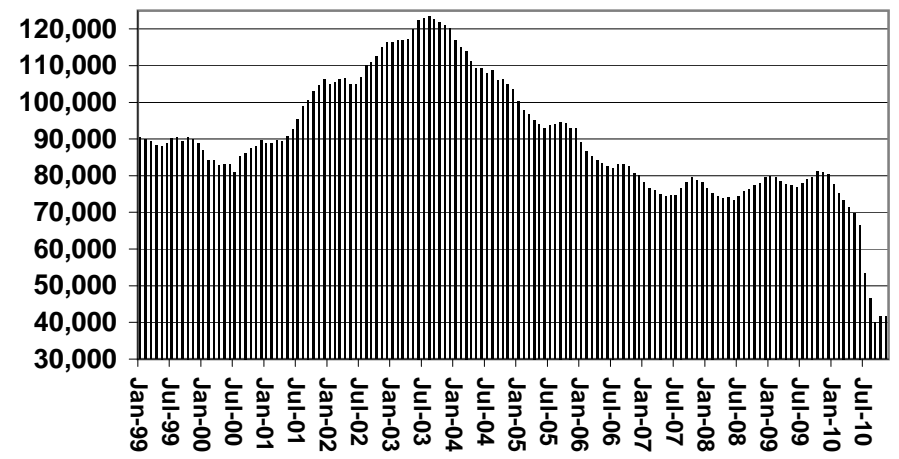
COMPARISON OF CASES, RECIPIENTS, PAYMENTS & AVERAGE PAYMENTS

FOR 1999, 2000, 2001, 2002, 2003, 2004, 2005, 2006, 2007, 2008, 2009, & 2010

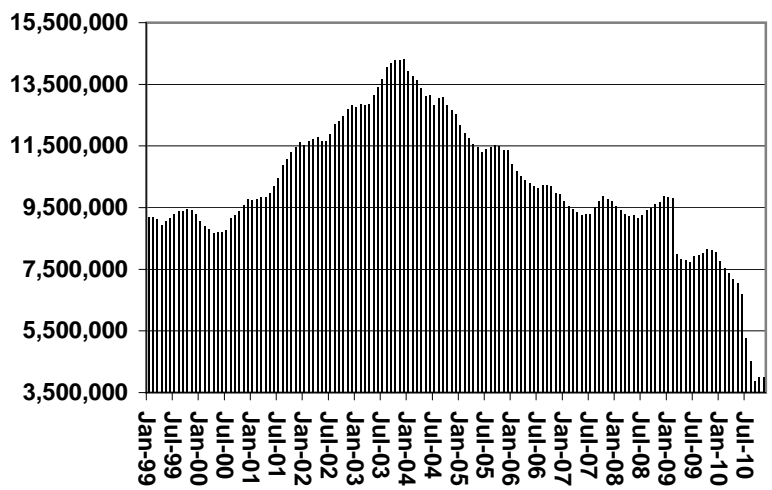
Cases



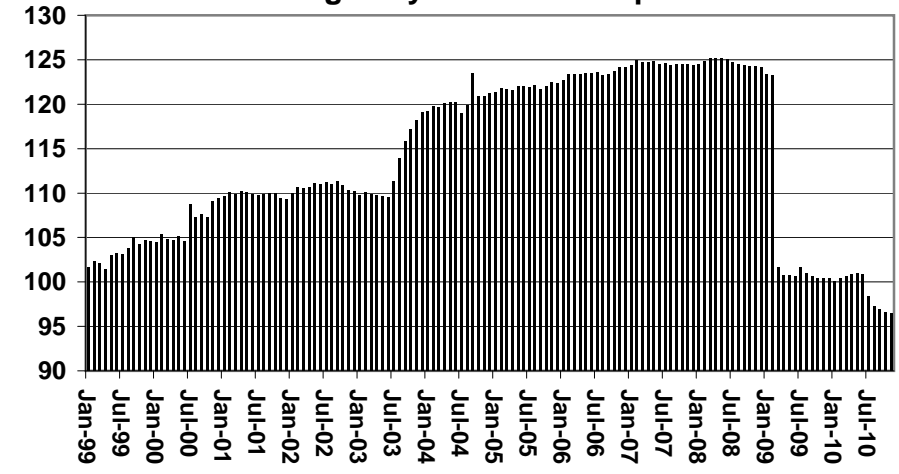
Recipients



Payments



Average Payment Per Recipient



**TABLE 1A
CA-UP**

CASH ASSISTANCE UNEMPLOYED PARENT PROGRAM: ARIZONA 1

	NOVEMBER 2010							CHANGE FROM			OCTOBER 2010			NOVEMBER 2009		
	FAMILIES (CASES)	PERSONS (RECIP.)	ADULTS	CHILDREN	TOTAL PAYMENTS	AVERAGE PAYMENT/ CASE	AVERAGE PAYMENT/ RECIP.	FAMILIES (CASES)	PERSONS (RECIP.)	TOTAL PAYMENTS	FAMILIES (CASES)	PERSONS (RECIP.)	TOTAL PAYMENTS			
	ARIZONA	607	2,224	913	1,311	170,439	280.79	76.64	(27)	(67)	(4,975)	(822)	(2,738)	(228,009)		
REGION																
MARICOPA	431	1,561	601	960	122,994	285.37	78.79	(18)	(60)	(4,124)	(568)	(1,811)	(150,469)			
NORTHERN	11	40	20	20	2,756	250.55	68.90	(5)	(12)	(928)	(43)	(153)	(13,027)			
APACHE	0	0	0	0	0	0.00	0.00	0	0	0	0	0	0			
COCONINO	0	0	0	0	0	0.00	0.00	0	0	0	(2)	(9)	(727)			
MOHAVE	8	29	15	14	2,159	269.88	74.45	(5)	(15)	(852)	(20)	(76)	(5,597)			
NAVAJO	3	11	5	6	597	199.00	54.27	0	3	(76)	(21)	(68)	(6,703)			
CENTRAL	51	183	84	99	12,832	251.61	70.12	(4)	(11)	(831)	(52)	(188)	(14,051)			
GILA	1	4	2	2	335	335.00	83.75	0	0	0	(4)	(13)	(1,023)			
LA PAZ	5	20	10	10	1,551	310.20	77.55	0	1	(67)	(1)	(1)	284			
PINAL	31	120	55	65	7,856	253.42	65.47	(4)	(12)	(764)	(47)	(174)	(13,312)			
YAVAPAI	2	3	1	2	384	192.00	128.00	(1)	(1)	(164)	(9)	(26)	(1,946)			
YUMA	12	36	16	20	2,706	225.50	75.17	(2)	(5)	(616)	(13)	(62)	(5,014)			
SOUTHERN	114	440	208	232	31,857	279.45	72.40	3	22	1,688	(137)	(498)	(43,502)			
COCHISE	3	12	3	9	911	303.67	75.92	1	4	451	(9)	(33)	(2,660)			
GRAHAM	0	0	0	0	0	0.00	0.00	(1)	(3)	(278)	(3)	(10)	(891)			
GREENLEE	0	0	0	0	0	0.00	0.00	0	0	0	0	0	0			
PIMA	111	428	205	223	30,946	278.79	72.30	3	21	1,515	(123)	(451)	(39,509)			
SANTA CRUZ	0	0	0	0	0	0.00	0.00	0	0	0	(2)	(4)	(442)			

1/EXCLUDES: PRIOR MONTH NET TOTALS OF: 64 CASES; 271 RECIPIENTS; \$28,774.
GRANT DIVERSION TOTALS OF: 0 CASES; \$0.
ZERO PAY TOTALS OF 26 CASES; 114 RECIPIENTS.

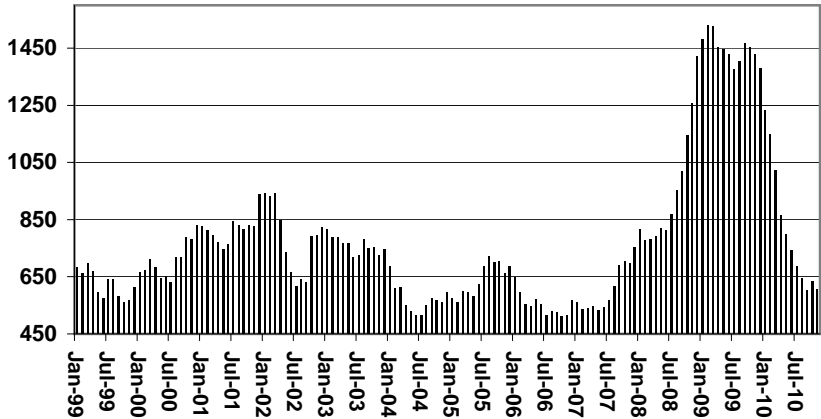
	CURRENT MO. CASES	CURRENT MO. RECIP.	CURRENT MO. DOLLARS	PRIOR MO. CASES	PRIOR MO. RECIP.	PRIOR MO. DOLLARS
PASQUAYAYQUI	8	28	\$2,275	2	8	\$352
WM APACHE	0	0	\$0	0	0	\$0
SALT RIVER	0	0	\$0	0	0	\$0
SAN CARLOS	0	0	\$0	0	0	\$0
HOPÍ	0	0	\$0	0	0	\$0
TOTAL	8	28	\$2,275	2	8	\$352

CASES WITH GRANT UNDER \$100 (SEE TABLE 1C).

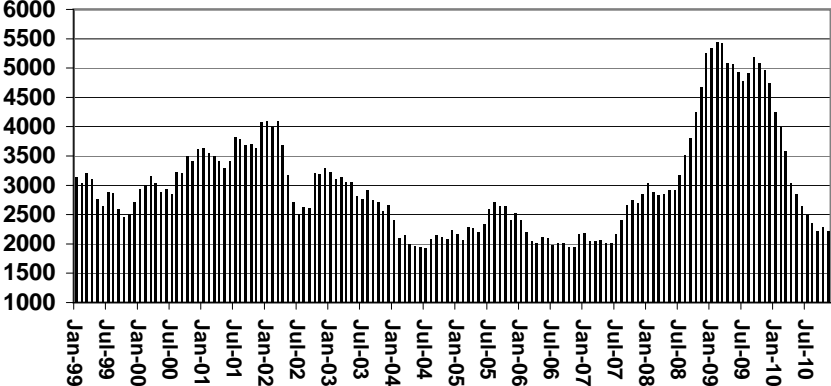
CHART 1A

CASH ASSISTANCE UNEMPLOYED PARENT PROGRAM COMPARISON OF CASES, RECIPIENTS, PAYMENTS & AVERAGE PAYMENTS FOR 1999, 2000, 2001, 2002, 2003, 2004, 2005, 2006, 2007, 2008, 2009, & 2010

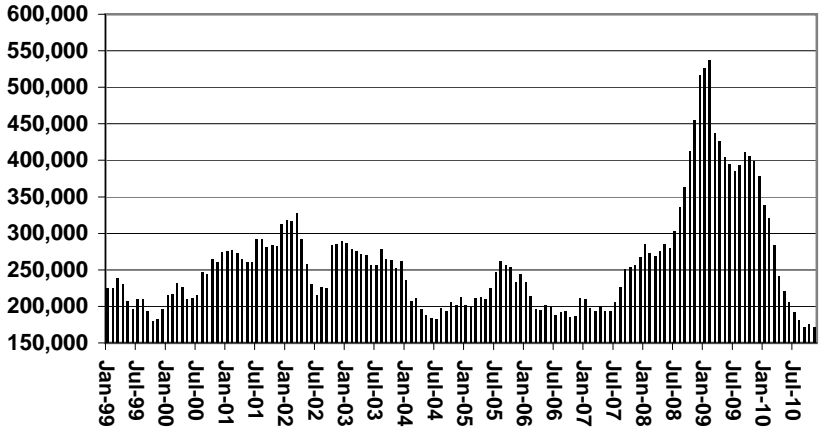
Cases



Recipients



Payments



Average Payment Per Recipient

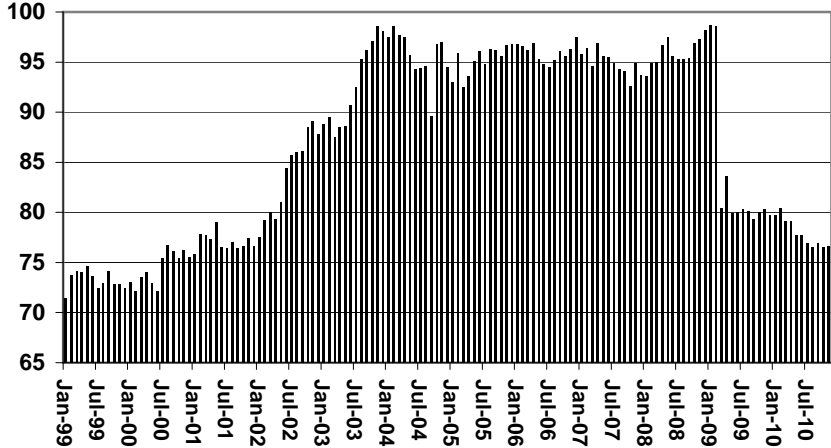


TABLE 1B 1/

**CASH ASSISTANCE: ARIZONA
CASES WITH GRANT UNDER \$100**

	NOVEMBER 2010							CHANGE FROM			NOVEMBER 2009		
					AVERAGE	AVERAGE							
	FAMILIES (CASES)	PERSONS (RECIP.)	ADULTS	CHILDREN	TOTAL PAYMENTS	PAYMENT/ CASE	PAYMENT/ RECIP.	FAMILIES (CASES)	PERSONS (RECIP.)	TOTAL PAYMENTS	FAMILIES (CASES)	PERSONS (RECIP.)	TOTAL PAYMENTS
ARIZONA	469	995	277	718	34,899	74.41	35.07	(45)	(74)	(3,914)	(437)	(713)	(31,170)
REGION													
MARICOPA	291	644	165	479	21,418	73.60	33.26	(18)	(25)	(1,488)	(265)	(425)	(17,715)
NORTHERN	26	49	17	32	1,457	56.04	29.73	(15)	(27)	(1,199)	(35)	(67)	(2,912)
APACHE	1	1	1	0	82	82.00	82.00	1	1	82	1	1	82
COCONINO	3	6	3	3	199	66.33	33.17	2	4	78	(2)	(5)	(306)
MOHAVE	16	29	10	19	707	44.19	24.38	(13)	(24)	(1,067)	(27)	(52)	(2,331)
NAVAJO	6	13	3	10	469	78.17	36.08	(5)	(8)	(292)	(7)	(11)	(357)
CENTRAL	44	83	24	59	3,364	76.45	40.53	2	4	196	(60)	(116)	(4,508)
GILA	3	6	3	3	293	97.67	48.83	0	2	139	(6)	(8)	(358)
LA PAZ	6	9	3	6	422	70.33	46.89	(2)	(7)	(138)	0	(4)	(103)
PINAL	21	39	11	28	1,647	78.43	42.23	7	13	448	(18)	(34)	(1,173)
YAVAPAI	6	11	3	8	448	74.67	40.73	(1)	1	(24)	(21)	(39)	(1,440)
YUMA	8	18	4	14	554	69.25	30.78	(2)	(5)	(229)	(15)	(31)	(1,434)
SOUTHERN	108	219	71	148	8,660	80.19	39.54	(14)	(26)	(1,423)	(77)	(105)	(6,035)
COCHISE	6	13	3	10	617	102.83	47.46	(5)	(8)	(286)	(16)	(22)	(1,157)
GRAHAM	2	4	2	2	162	81.00	40.50	(1)	(2)	(131)	(3)	(5)	(409)
GREENLEE	2	4	2	2	166	83.00	41.50	0	0	0	2	4	166
PIMA	91	179	57	122	7,106	78.09	39.70	(8)	(17)	(886)	(65)	(96)	(5,174)
SANTA CRUZ	7	19	7	12	609	87.00	32.05	0	1	(120)	5	14	539

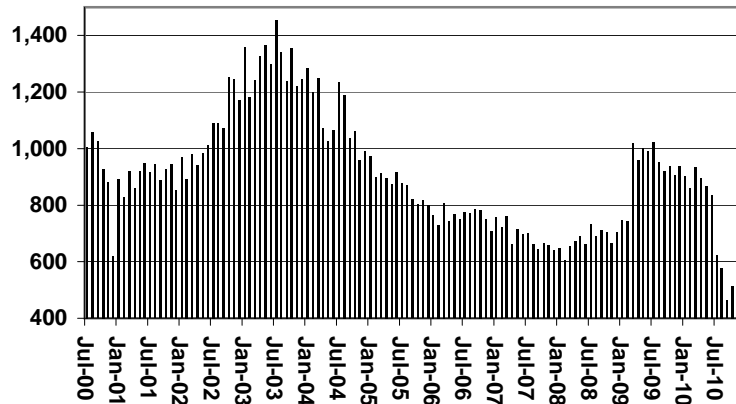
EXCLUDES: PRIOR MONTH NET TOTALS OF 530 CASES; 1,147 RECIPIENTS; \$31,915.

CHART 1B

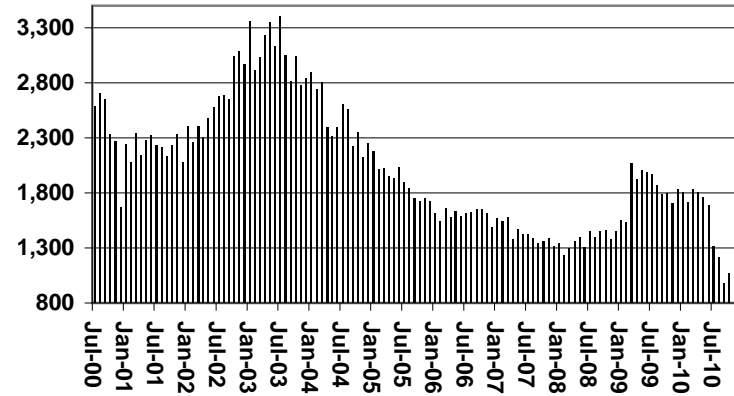
CASH ASSISTANCE PROGRAM CASES WITH GRANT UNDER \$100

FOR 1999, 2000, 2001, 2002, 2003, 2004, 2005, 2006, 2007, 2008, 2009, & 2010

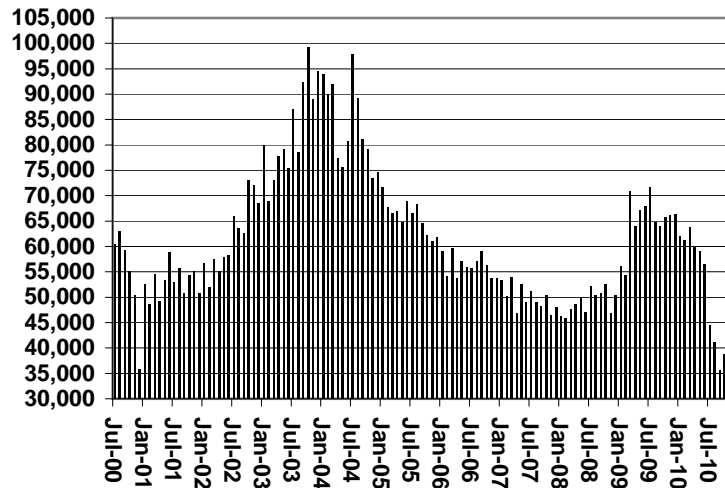
Cases



Recipients



Payments



Average Payment Per Recipient

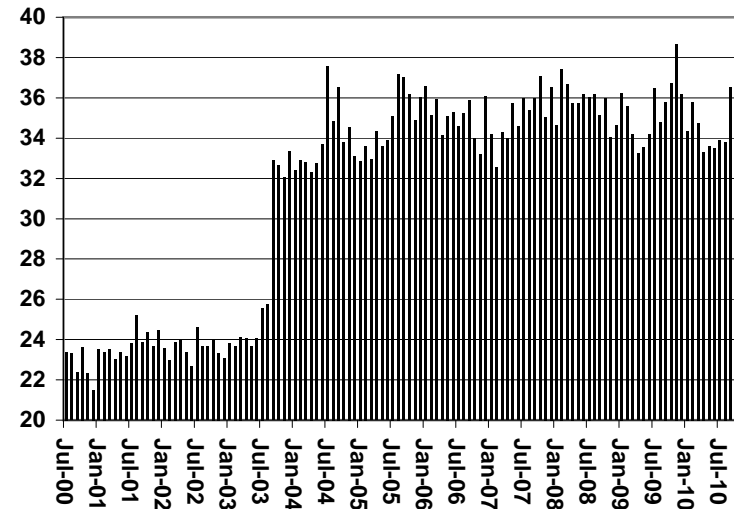


TABLE 1C 1/

CASH ASSISTANCE UNEMPLOYED PARENT PROGRAM: ARIZONA
 CASES WITH GRANT UNDER \$100

	CHANGE FROM												
	NOVEMBER 2010							OCTOBER 2010			NOVEMBER 2009		
	FAMILIES (CASES)	PERSONS (RECIP.)	ADULTS	CHILDREN	TOTAL PAYMENTS	AVERAGE PAYMENT/ CASE	AVERAGE PAYMENT/ RECIP.	FAMILIES (CASES)	PERSONS (RECIP.)	TOTAL PAYMENTS	FAMILIES (CASES)	PERSONS (RECIP.)	TOTAL PAYMENTS
ARIZONA	33	91	16	75	1,667	50.52	18.32	7	24	240	(20)	(52)	(1,676)
REGION													
MARICOPA	28	77	12	65	1,466	52.36	19.04	9	33	458	(15)	(28)	(1,177)
NORTHERN	0	0	0	0	0	0.00	0.00	(3)	(9)	(197)	0	0	0
APACHE	0	0	0	0	0	0.00	0.00	0	0	0	0	0	0
COCONINO	0	0	0	0	0	0.00	0.00	0	0	0	0	0	0
MOHAVE	0	0	0	0	0	0.00	0.00	(3)	(9)	(197)	0	0	0
NAVAJO	0	0	0	0	0	0.00	0.00	0	0	0	0	0	0
CENTRAL	3	9	2	7	99	33.00	11.00	1	3	28	(2)	(4)	(273)
GILA	0	0	0	0	0	0.00	0.00	0	0	0	0	0	0
LA PAZ	0	0	0	0	0	0.00	0.00	0	0	0	0	0	0
PINAL	2	6	2	4	46	23.00	7.67	1	3	28	0	0	(85)
YAVAPAI	0	0	0	0	0	0.00	0.00	0	0	0	(3)	(7)	(241)
YUMA	1	3	0	3	53	53.00	17.67	0	0	0	1	3	53
SOUTHERN	2	5	2	3	102	51.00	20.40	0	(3)	(49)	(3)	(20)	(226)
COCHISE	0	0	0	0	0	0.00	0.00	0	0	0	0	0	0
GRAHAM	0	0	0	0	0	0.00	0.00	0	0	0	0	0	0
GREENLEE	0	0	0	0	0	0.00	0.00	0	0	0	0	0	0
PIMA	2	5	2	3	102	51.00	20.40	0	(3)	(49)	(2)	(15)	(150)
SANTA CRUZ	0	0	0	0	0	0.00	0.00	0	0	0	(1)	(5)	(76)

EXCLUDES: PRIOR MONTH NET TOTALS OF 36 CASES; 119 RECIPIENTS; \$2,050.

CHART 1C

CASH ASSISTANCE UNEMPLOYED PARENT PROGRAM

CASES WITH GRANT UNDER \$100

FOR 1999, 2000, 2001, 2002, 2003, 2004, 2005, 2006, 2007, 2008, 2009, & 2010

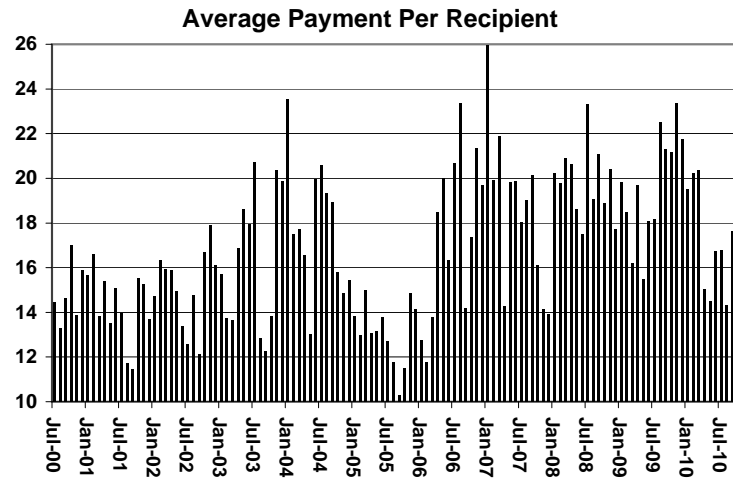
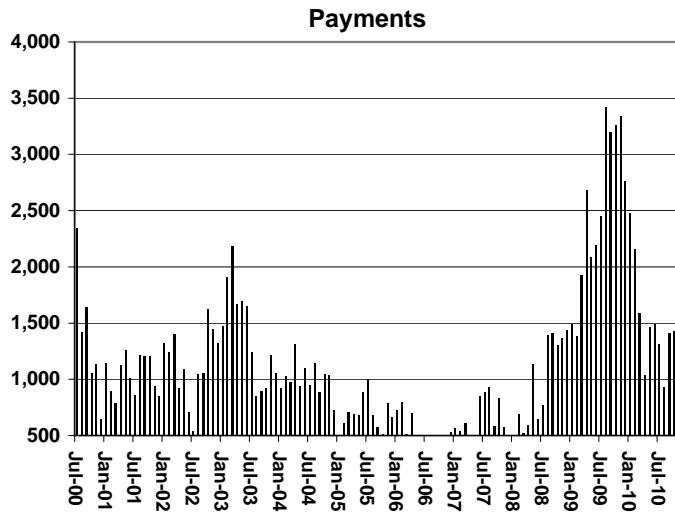
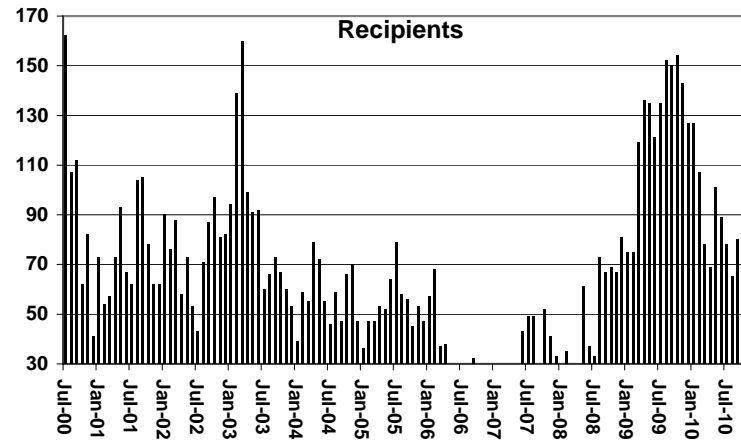
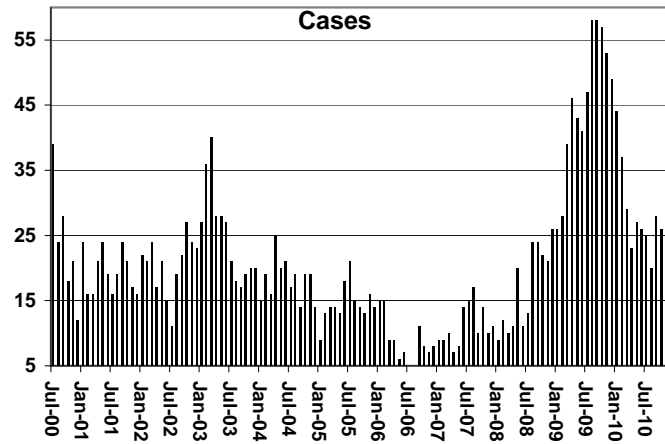


TABLE 4
TUBERCULOSIS CONTROL: ARIZONA 1/

	NOVEMBER 2010						CHANGE FROM					
							OCTOBER 2010			NOVEMBER 2009		
	NUMBER OF CASES	PERSONS (RECIP.)	TOTAL PAYMENTS	AVERAGE PAYMENT/ CASE	AVERAGE PAYMENT/ RECIP.		NUMBER OF CASES	PERSONS (RECIP.)	TOTAL PAYMENTS	NUMBER OF CASES	PERSONS (RECIP.)	TOTAL PAYMENTS
ARIZONA	1	1	173	173.00	173.00	0	0	0	(1)	(1)	(108)	
REGION												
MARICOPA	1	1	173	173.00	173.00	0	0	0	0	0	0	
NORTHERN	0	0	0	0.00	0.00	0	0	0	0	0	0	
APACHE	0	0	0	0.00	0.00	0	0	0	0	0	0	
COCONINO	0	0	0	0.00	0.00	0	0	0	0	0	0	
MOHAVE	0	0	0	0.00	0.00	0	0	0	0	0	0	
NAVAJO	0	0	0	0.00	0.00	0	0	0	0	0	0	
CENTRAL	0	0	0	0.00	0.00	0	0	0	0	0	0	
GILA	0	0	0	0.00	0.00	0	0	0	0	0	0	
LA PAZ	0	0	0	0.00	0.00	0	0	0	0	0	0	
PINAL	0	0	0	0.00	0.00	0	0	0	0	0	0	
YAVAPAI	0	0	0	0.00	0.00	0	0	0	0	0	0	
YUMA	0	0	0	0.00	0.00	0	0	0	0	0	0	
SOUTHERN	0	0	0	0.00	0.00	0	0	0	(1)	(1)	(108)	
COCHISE	0	0	0	0.00	0.00	0	0	0	(1)	(1)	(108)	
GRAHAM	0	0	0	0.00	0.00	0	0	0	0	0	0	
GREENLEE	0	0	0	0.00	0.00	0	0	0	0	0	0	
PIMA	0	0	0	0.00	0.00	0	0	0	0	0	0	
SANTA CRUZ	0	0	0	0.00	0.00	0	0	0	0	0	0	

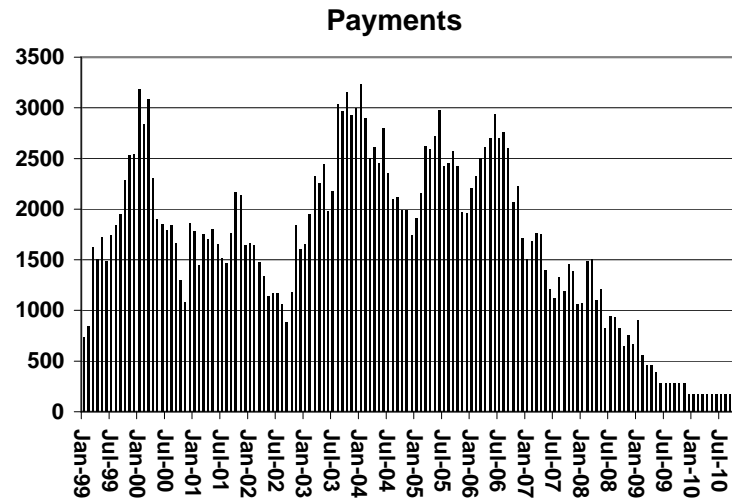
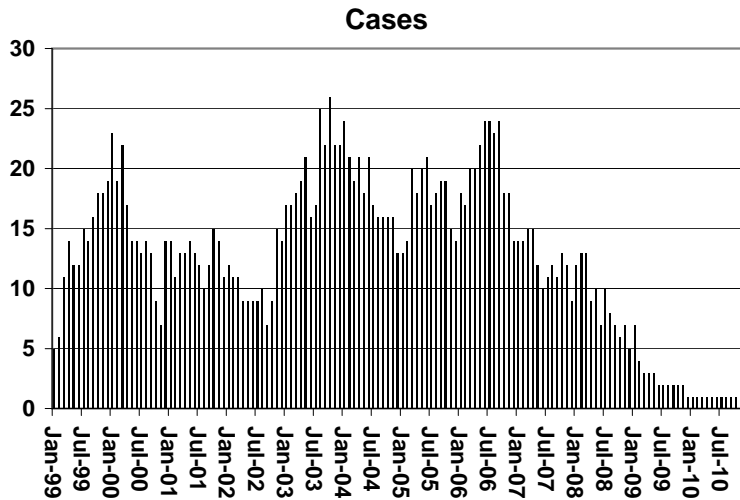
1/EXCLUDES: PRIOR MONTH NET TOTALS OF : 0 CASES; 0 RECIPIENTS; \$0.

CHART 4

TUBERCULOSIS CONTROL PROGRAM

COMPARISON OF CASES, PAYMENTS & AVERAGE PAYMENTS

FOR 1999, 2000, 2001, 2002, 2003, 2004, 2005, 2006, 2007, 2008, 2009, & 2010



Average Payment Per Case

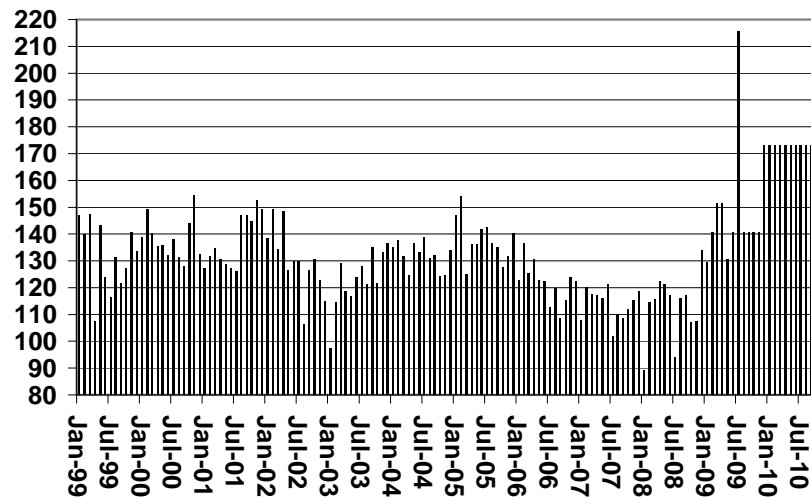


TABLE 6

SUPPLEMENTAL NUTRITION ASSISTANCE PROGRAM: ARIZONA 1

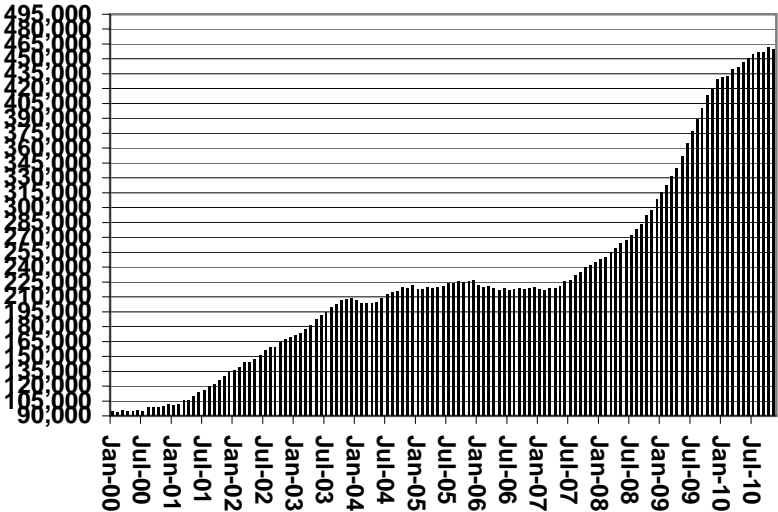
	CHANGE FROM												
	NOVEMBER 2010							OCTOBER 2010			NOVEMBER 2009		
	HOUSEHOLDS	PERSONS	ADULTS	CHILDREN	TOTAL PAYMENTS ISSUANCE	AVERAGE PAYMT./ HOUSEHOLD	AVERAGE PAYMT./ PERSON	HOUSEHOLDS	PERSONS	TOTAL PAYMENTS ISSUANCE	HOUSEHOLDS	PERSONS	TOTAL PAYMENTS ISSUANCE
ARIZONA	459,600	1,050,181	543,740	506,441	133,863,250	291.26	127.47	(2,281)	(5,024)	(884,726)	39,251	63,905	4,880,879
REGION													
MARICOPA	247,599	567,736	276,565	291,171	72,646,247	293.40	127.96	(2,062)	(3,589)	(659,358)	19,638	31,353	1,244,112
NORTHERN	52,604	127,297	71,384	55,913	15,971,158	303.61	125.46	(104)	(467)	(58,340)	4,240	6,042	752,820
APACHE	9,873	27,363	14,717	12,646	3,383,138	342.67	123.64	(1)	3	5,430	709	777	111,610
COCONINO	9,519	23,343	12,493	10,850	2,887,660	303.36	123.71	(64)	(269)	(25,375)	528	459	5,100
MOHAVE	20,243	42,671	25,702	16,969	5,435,746	268.52	127.39	(22)	(145)	(19,933)	1,965	3,072	386,815
NAVAJO	12,969	33,920	18,472	15,448	4,264,614	328.83	125.73	(17)	(56)	(18,462)	1,038	1,734	249,295
CENTRAL	59,929	140,673	76,526	64,147	17,625,323	294.10	125.29	(309)	(1,093)	(138,878)	5,566	10,295	1,164,160
GILA	5,968	12,934	7,611	5,323	1,700,262	284.90	131.46	(13)	(38)	(14,628)	633	1,053	127,442
LA PAZ	1,970	4,018	2,328	1,690	518,147	263.02	128.96	15	24	4,434	146	176	16,136
PINAL	21,365	52,283	27,263	25,020	6,687,692	313.02	127.91	(107)	(362)	(28,477)	2,034	4,200	467,136
YAVAPAI	14,509	29,232	17,604	11,628	3,628,300	250.07	124.12	(50)	(117)	(27,474)	1,439	2,345	199,669
YUMA	16,117	42,206	21,720	20,486	5,090,922	315.87	120.62	(154)	(600)	(72,733)	1,314	2,521	353,777
SOUTHERN	99,468	214,475	119,265	95,210	27,620,522	277.68	128.78	194	125	(28,150)	9,807	16,215	1,719,787
COCHISE	10,389	22,396	12,726	9,670	2,806,068	270.10	125.29	34	26	1,643	829	1,383	181,209
GRAHAM	3,437	7,897	4,425	3,472	1,022,160	297.40	129.44	8	(57)	(7,106)	344	399	93,666
GREENLEE	483	1,037	601	436	133,462	276.32	128.70	0	(20)	1,321	(40)	(218)	(8,387)
PIMA	80,701	171,230	95,479	75,751	22,222,649	275.37	129.78	101	8	(37,229)	8,319	13,920	1,357,564
SANTA CRUZ	4,458	11,915	6,034	5,881	1,436,183	322.16	120.54	51	168	13,221	355	731	95,735

1/EXCLUDES: PRIOR MONTH NET TOTALS OF : 13,024 CASES; 31,165 RECIPIENTS; \$2,745,950.
 AGED CANCELATIONS: 9,453 CASES; 11,613 RECIPIENTS; 608,562.
 SNAP CONVERSIONS: 0 CASES; 0 RECIPIENTS; \$0.
 SNAP CHILD ONLY: 57,614 CASES; 135,268 RECIPIENTS; \$58,266,201.
 SNAP ZERO PAY: 13,521 CASES; 55,369 RECIPIENTS.

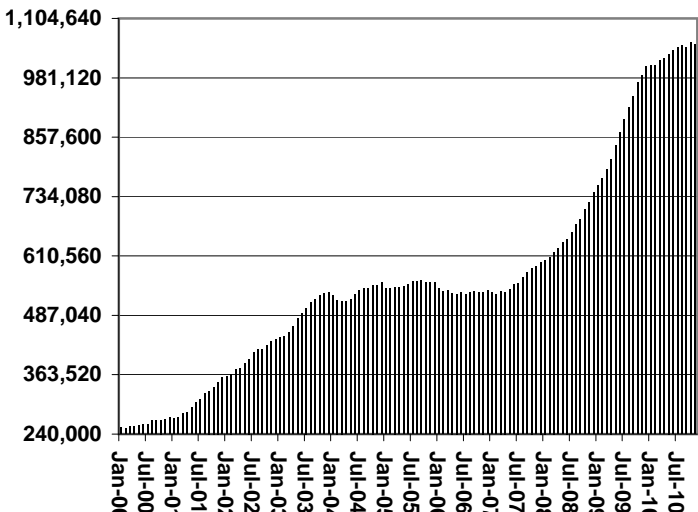
CHART 6

SUPPLEMENTAL NUTRITION ASSISTANCE PROGRAM (SNAP) COMPARISON OF HOUSEHOLDS, RECIPIENTS, PAYMENTS & AVERAGE PAYMENTS FOR 1999, 2000, 2001, 2002, 2003, 2004, 2005, 2006, 2007, 2008, 2009, & 2010

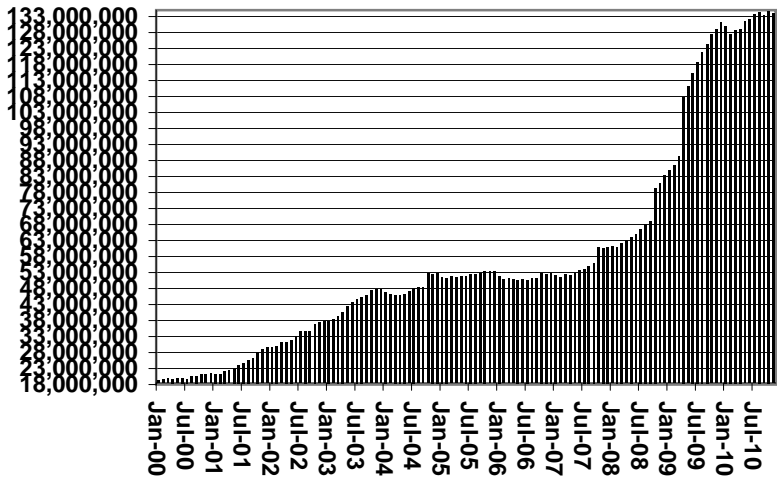
Households



Recipients



Payments



Average Payment Per Household

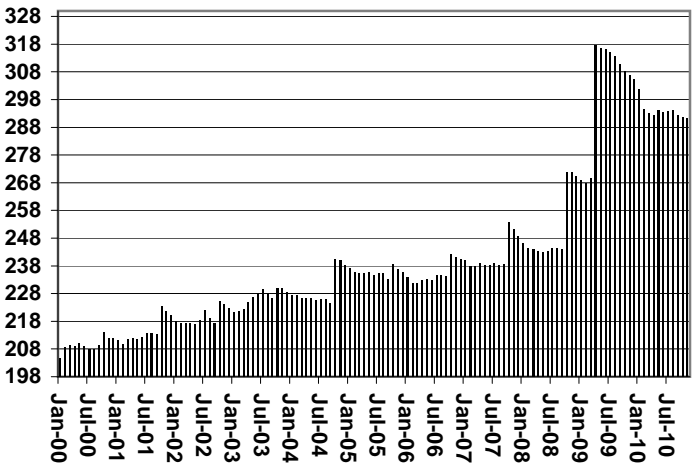


TABLE 7A
MEDICAL ASSISTANCE PROGRAM
RECIPIENTS

NOVEMBER 2010

	SOBRA WOMAN 133% FPL	SOBRA CHILD	ADULT W/O CHILD 100% FPL	FOSTER CARE	1931 36% FPL	FEDERAL EMERGENCY SERVICES	INFANTS	ADULT W/O CHILD 40% FPL	MEDICAL W/SPEND DOWN	SOBRA WOMAN 100% FPL	SOBRA CHILD 100% FPL	TRANSITIONAL MEDICAL T1 - T4	1931 100% FPL	YATI	OTHER	TOTAL CASES
ARIZONA	10,821	70,904	64,038	12,212	339,447	51,225	47,027	173,039	7,174	3,816	229,019	45,285	126,532	336	28,095	1,208,970
REGION																
MARICOPA	5,807	40,358	31,433	6,405	187,556	39,656	28,027	88,108	3,897	1,933	133,660	23,162	65,808	185	14,542	670,537
NORTHERN	1,159	7,731	7,604	641	44,085	1,076	4,849	25,632	953	561	23,279	5,887	14,934	18	2,968	141,377
APACHE	184	1,518	1,048	32	11,386	85	960	5,742	119	108	4,281	1,203	2,738	0	396	29,800
COCONINO	277	1,492	1,680	131	8,342	336	1,072	4,697	148	106	4,826	1,268	3,059	11	426	27,871
MOHAVE	371	2,369	3,077	331	11,756	426	1,485	8,248	481	201	8,343	1,976	5,244	5	1,554	45,867
NAVAJO	327	2,352	1,799	147	12,601	229	1,332	6,945	205	146	5,829	1,440	3,893	2	592	37,839
CENTRAL	1,739	9,586	9,793	1,514	44,050	4,007	6,053	22,431	1,048	592	29,454	6,730	18,976	37	4,364	160,374
GILA	119	718	778	99	4,542	126	522	2,616	109	44	1,961	416	1,387	0	363	13,800
LA PAZ	47	271	274	18	1,248	129	151	856	26	14	717	215	417	0	163	4,546
PINAL	606	4,107	2,912	627	18,253	1,165	2,235	8,452	342	185	10,377	2,081	6,128	15	1,277	58,762
YAVAPAI	389	1,820	2,774	471	7,311	1,151	1,173	5,270	284	121	6,271	1,653	4,172	17	1,245	34,122
YUMA	578	2,670	3,055	299	12,696	1,436	1,972	5,237	287	228	10,128	2,365	6,872	5	1,316	49,144
SOUTHERN	2,116	13,229	15,208	3,652	63,756	6,486	8,098	36,868	1,276	730	42,626	9,506	26,814	96	6,221	236,682
COCHISE	242	1,235	1,744	240	7,017	447	823	3,319	165	83	4,344	1,017	2,822	3	875	24,376
GRAHAM	114	488	514	70	2,778	28	342	1,454	67	28	1,417	342	902	2	157	8,703
GREENLEE	23	53	67	7	437	2	47	211	5	3	217	67	114	2	34	1,289
PIMA	1,627	10,745	11,922	3,303	50,012	5,529	6,447	30,684	977	562	33,497	7,541	20,883	88	4,678	188,495
SANTA CRUZ	110	708	961	32	3,512	480	439	1,200	62	54	3,151	539	2,093	1	477	13,819

TABLE 7B

MEDICAL ASSISTANCE PROGRAM

RECIPIENTS

CHANGE FROM

OCTOBER 2010

	SOBRA WOMAN 133% FPL	SOBRA CHILD	ADULT W/O CHILD 100% FPL	FOSTER CARE	1931 36% FPL	FEDERAL EMERGENCY SERVICES	INFANTS	ADULT W/O CHILD 40% FPL	MEDICAL W/SPEND DOWN	SOBRA WOMAN 100% FPL	SOBRA CHILD 100% FPL	TRANSITIONAL MEDICAL T1 - T4	1931 100% FPL	YATI	OTHER	TOTAL CASES
ARIZONA	(516)	(719)	(708)	93	(2,703)	(1,317)	(745)	(1,036)	(440)	21	(1,636)	1,660	(1,114)	(1)	151	(9,010)
REGION																
MARICOPA	(343)	(314)	(198)	62	(1,834)	(1,144)	(593)	(807)	(261)	38	(816)	306	(504)	(2)	94	(6,316)
NORTHERN	(46)	(131)	(59)	(3)	(275)	(30)	(82)	(160)	(62)	(16)	(204)	170	(181)	(5)	6	(1,078)
APACHE	(12)	(60)	(26)	(2)	7	(3)	(13)	(39)	(18)	(7)	(32)	47	5	0	(16)	(169)
COCONINO	(4)	(35)	4	(2)	(43)	(1)	(10)	(81)	(21)	(2)	(141)	45	(85)	(2)	7	(371)
MOHAVE	(13)	(25)	(36)	0	(38)	(15)	(25)	6	(1)	3	(27)	46	(38)	(1)	5	(159)
NAVAJO	(17)	(11)	(1)	1	(201)	(11)	(34)	(46)	(22)	(10)	(4)	32	(63)	(2)	10	(379)
CENTRAL	(57)	(120)	(229)	5	(416)	(133)	(26)	(82)	(78)	2	(339)	552	(173)	1	24	(1,069)
GILA	(8)	(14)	(11)	(1)	(16)	3	(13)	(42)	16	1	(30)	38	(2)	0	16	(63)
LA PAZ	(3)	(5)	(11)	1	29	6	6	1	4	1	(29)	7	(7)	0	(4)	(4)
PINAL	(28)	(44)	(32)	8	(89)	(35)	15	(89)	(61)	0	(66)	148	(26)	1	9	(289)
YAVAPAI	(8)	12	(25)	2	(247)	0	(30)	11	(10)	5	33	(18)	72	0	(7)	(210)
YUMA	(10)	(69)	(150)	(5)	(93)	(107)	(4)	37	(27)	(5)	(247)	377	(210)	0	10	(503)
SOUTHERN	(70)	(154)	(222)	29	(178)	(10)	(44)	13	(39)	(3)	(277)	632	(256)	5	27	(547)
COCHISE	0	(2)	1	(3)	45	0	10	(11)	(2)	(4)	(14)	26	(16)	1	7	38
GRAHAM	(4)	(17)	(29)	(3)	12	(6)	6	6	(3)	(2)	(66)	63	(36)	0	(8)	(87)
GREENLEE	3	(6)	0	(1)	(1)	0	(7)	1	(3)	(2)	(10)	13	(11)	0	3	(21)
PIMA	(70)	(137)	(187)	32	(281)	20	(59)	(33)	(20)	19	(127)	527	(181)	4	25	(468)
SANTA CRUZ	1	8	(7)	4	47	(24)	6	50	(11)	(14)	(60)	3	(12)	0	0	(9)

TABLE 7C
MEDICAL ASSISTANCE PROGRAM
RECIPIENTS

CHANGE FROM
NOVEMBER 2009

	SOBRA WOMAN 133% FPL	SOBRA CHILD	ADULT W/O CHILD 100% FPL	FOSTER CARE	1931 36% FPL	FEDERAL EMERGENCY SERVICES	INFANTS	ADULT W/O CHILD 40% FPL	MEDICAL W/SPEND DOWN	SOBRA WOMAN 100% FPL	SOBRA CHILD 100% FPL	TRANSITIONAL MEDICAL T1 - T4	3E 1931 100% FPL	YATI	OTHER	TOTAL CASES
ARIZONA	444	3,787	7,201	568	514	(36,941)	(3,468)	20,497	765	16	6,426	6,406	11,702	14	2,238	20,169
REGION																
MARICOPA	283	2,686	4,737	445	(1,220)	(29,251)	(1,824)	12,464	491	(7)	4,243	3,630	8,085	(7)	1,499	6,254
NORTHERN	(39)	363	367	27	520	(877)	(403)	2,178	70	22	(363)	947	20	1	221	3,054
APACHE	(15)	112	23	(11)	219	(51)	(48)	602	(3)	5	(268)	357	(103)	0	15	834
COCONINO	(11)	77	138	(10)	157	(203)	(128)	201	24	(1)	(296)	188	(48)	1	65	154
MOHAVE	(31)	138	128	40	207	(461)	(116)	1,013	41	5	171	260	166	2	101	1,664
NAVAJO	18	36	78	8	(63)	(162)	(111)	362	8	13	30	142	5	(2)	40	402
CENTRAL	109	226	660	77	1,160	(1,817)	(233)	1,939	76	(5)	1,108	224	1,526	11	204	5,265
GILA	(4)	50	34	5	75	(50)	(34)	62	8	9	(28)	(9)	92	0	56	266
LA PAZ	20	54	8	5	(59)	(42)	6	77	(6)	(9)	16	31	26	0	7	134
PINAL	58	58	279	33	633	(578)	16	758	82	4	823	228	601	3	(30)	2,968
YAVAPAI	(4)	22	215	16	56	(609)	(198)	275	(30)	(9)	209	70	354	6	98	471
YUMA	39	42	124	18	455	(538)	(23)	767	22	0	88	(96)	453	2	73	1,426
SOUTHERN	91	512	1,437	19	54	(4,996)	(1,008)	3,916	128	6	1,438	1,605	2,071	9	314	5,596
COCHISE	12	5	77	(11)	324	(173)	(108)	316	66	3	255	(63)	161	(3)	73	934
GRAHAM	17	1	(5)	(3)	252	(36)	(70)	241	4	(11)	(67)	(38)	(138)	1	16	164
GREENLEE	10	(9)	(14)	(1)	65	(8)	(19)	44	(5)	(4)	(66)	22	(56)	2	12	(27)
PIMA	33	426	1,347	32	(771)	(4,643)	(761)	3,193	51	24	1,367	1,608	1,953	9	158	4,026
SANTA CRUZ	19	89	32	2	184	(136)	(50)	122	12	(6)	(51)	76	151	0	55	499

CHART 7

MEDICAL ASSISTANCE PROGRAM

COMPARISON OF RECIPIENTS

FOR 1999, 2000, 2001, 2002, 2003, 2004, 2005, 2006, 2007, 2008, 2009, & 2010

Total Recipients

