



DEPARTMENT OF ECONOMIC SECURITY

Your Partner For A Stronger Arizona

State of Arizona

Department of Economic Security

Family Assistance Administration

Statistical Bulletin

December, 2010

Phone: (602) 542-3678

<https://www.azdes.gov/appreports.aspx>

**** STATISTICAL BULLETIN ****
ARIZONA DEPARTMENT OF ECONOMIC SECURITY
FAMILY ASSISTANCE ADMINISTRATION
BOX 6123, PHOENIX, ARIZONA 85005
PHONE (602) 542-3678

DECEMBER 2010

THIS ISSUE OF THE STATISTICAL BULLETIN COMPARES DECEMBER 2010 DATA FOR EACH OF THE INDICATED PROGRAMS WITH THE INFORMATION FOR NOVEMBER 2010 AND DECEMBER 2009. STATEWIDE SUMMARIES OF ACTIVITY WITHIN EACH OF THE SPECIFIC PROGRAMS FOR THIS REPORT PERIOD ARE DISCUSSED BELOW. THE TABLES COMPARE CURRENT AND PRIOR MONTH DATA. DISTRICT AND COUNTY COMPARISONS ARE PROVIDED WITHIN THIS BULLETIN

TANF SUMMARY

COMPARING TO NOVEMBER 2010, DECEMBER 2010 CASES INCREASED BY 43 (0.22%) TO 19,790. RECIPIENTS INCREASED BY 68 (0.15%) TO 45,017. PAYMENTS DECREASED BY \$5,896 (0.14%) TO \$4,217,110. AVERAGE PAYMENT PER CASE DECREASED BY \$0.77 (0.36%) TO \$0.00. PAYMENT PER RECIPIENT DECREASED BY \$0.27 (0.29%) TO \$93.68.

COMPARING TO DECEMBER 2009, DECEMBER 2010 CASES DECREASED BY 20,068 (50.35%). RECIPIENTS DECREASED BY 42,101 (48.33%). TOTAL PAYMENTS DECREASED BY \$4,300,573 (50.49%). THE AVERAGE PAYMENT PER CASE DECREASED BY \$0.61 (0.29%). THE AVERAGE PAYMENT PER RECIPIENT DECREASED BY \$4.09 (4.18%).

CASH ASSISTANCE (CA)

COMPARING TO NOVEMBER 2010, DECEMBER 2010 CASES INCREASED BY 39 (0.21%) TO 18,677. RECIPIENTS INCREASED BY 78 (0.19%) TO 41,717. PAYMENTS DECREASED BY \$4,923 (0.12%) TO \$4,011,078. AVERAGE PAYMENT PER CASE DECREASED BY \$0.71 (0.33%) TO \$214.76. PAYMENT PER RECIPIENT DECREASED BY \$0.30 (0.31%) TO \$96.15.

COMPARING TO DECEMBER 2009, DECEMBER 2010 CASES DECREASED BY 18,815 (50.18%). RECIPIENTS DECREASED BY 38,695 (48.12%). TOTAL PAYMENTS DECREASED BY \$4,059,466 (50.30%). THE AVERAGE PAYMENT PER CASE DECREASED BY \$0.50 (0.23%). THE AVERAGE PAYMENT PER RECIPIENT DECREASED BY \$4.21 (4.19%).

CASH ASSISTANCE UNEMPLOYED PARENT PROGRAM (CA-UP)

COMPARING TO NOVEMBER 2010, DECEMBER 2010 CASES DECREASED BY 12 (1.98%) TO 595. RECIPIENTS DECREASED BY 21 (0.94%) TO 2,203. PAYMENTS DECREASED BY \$2,801 (1.64%) TO \$167,638. AVERAGE PAYMENT PER CASE INCREASED BY \$0.95 (0.34%) TO \$281.74. PAYMENT PER RECIPIENT DECREASED BY \$0.54 (0.70%) TO \$76.10.

COMPARING TO DECEMBER 2009, DECEMBER 2010 CASES DECREASED BY 783 (56.82%). RECIPIENTS DECREASED BY 2,541 (53.56%). TOTAL PAYMENTS DECREASED BY \$210,386 (55.65%). THE AVERAGE PAYMENT PER CASE INCREASED BY \$7.42 (2.70%). THE AVERAGE PAYMENT PER RECIPIENT DECREASED BY \$3.58 (4.50%).

CASH ASSISTANCE WITH GRANT UNDER \$100 (CA-MOE)

COMPARING TO NOVEMBER 2010, DECEMBER 2010 CASES INCREASED BY 15 (3.20%) TO 484. RECIPIENTS INCREASED BY 11 (1.11%) TO 1,006. PAYMENTS INCREASED BY \$1,491 (4.27%) TO \$36,390. AVERAGE PAYMENT PER CASE INCREASED BY \$0.78 (1.05%) TO \$75.19. AVERAGE PAYMENT PER RECIPIENT INCREASED BY \$1.10 (3.14%) TO \$36.17.

COMPARING TO DECEMBER 2009, DECEMBER 2010 CASES DECREASED BY 455 (48.46%). RECIPIENTS DECREASED BY 829 (45.18%). TOTAL PAYMENTS DECREASED BY \$29,965 (45.16%). THE AVERAGE PAYMENT PER CASE INCREASED BY \$4.52 (6.40%). THE AVERAGE PAYMENT PER RECIPIENT INCREASED BY \$0.01 (0.03%).

CASH ASSISTANCE UNEMPLOYED PARENT PROGRAM WITH GRANT UNDER \$100 (CA-UP-MOE) NEW PROGRAM STARTING 7/01

COMPARING TO NOVEMBER 2010, DECEMBER 2010 CASES INCREASED BY 1 (3.03%) TO 34. RECIPIENTS INCREASED BY 0 (0.00%) TO 91. PAYMENTS INCREASED BY \$337 (20.22%) TO \$2,004. AVERAGE PAYMENT PER CASE INCREASED BY \$8.42 (16.67%) TO \$58.94. PAYMENT PER RECIPIENT INCREASED BY \$3.70 (20.20%) TO \$22.02.

COMPARING TO DECEMBER 2009, DECEMBER 2010 CASES DECREASED BY 15 (30.61%). RECIPIENTS DECREASED BY 36 (2.16%). TOTAL PAYMENTS DECREASED BY \$756 (27.39%). THE AVERAGE PAYMENT PER CASE INCREASED BY \$2.61 (4.63%). THE AVERAGE PAYMENT PER RECIPIENT INCREASED BY \$0.29 (1.33%).

TUBERCULOSIS CONTROL PROGRAM (TC)

COMPARING TO NOVEMBER 2010, DECEMBER 2010 CASES INCREASED BY 0 (0.00%) TO 1. RECIPIENTS INCREASED BY 0 (0.00%) TO 1. PAYMENTS INCREASED BY \$0 (0.00%) TO \$173. AVERAGE PAYMENT PER CASE INCREASED BY \$40.09 (23.17%) TO \$213.09. AVERAGE PAYMENT PER RECIPIENT INCREASED BY \$0.00 (0.00%) TO \$173.00.

COMPARING TO DECEMBER 2009, DECEMBER 2010 CASES INCREASED BY 0 (0.00%). RECIPIENTS INCREASED BY 0 (0.00%). TOTAL PAYMENTS INCREASED BY \$0 (0.00%). THE AVERAGE PAYMENT PER CASE INCREASED BY \$40.09 (23.17%). THE AVERAGE PAYMENT PER RECIPIENT INCREASED BY \$0.00 (0.00%).

SUPPLEMENTAL NUTRITION ASSISTANCE PROGRAM (SNAP)

COMPARING TO NOVEMBER 2010, DECEMBER 2010 SUPPLEMENTAL NUTRITION ASSISTANCE HOUSEHOLDS INCREASED BY 722 (0.16%) TO 460,322. PERSONS RECEIVING SUPPLEMENTAL NUTRITION ASSISTANCE INCREASED BY 505 (0.05%) TO 1,050,686. TOTAL COUPON ISSUANCE DECREASED BY \$283,588 (0.21%) TO \$133,579,662. THE AVERAGE HOUSEHOLD ALLOTMENT DECREASED BY \$1.07 (0.37%) TO \$290.19. THE AVERAGE ALLOTMENT PER PERSON DECREASED BY \$0.33 (0.26%) TO \$127.14.

COMPARING TO DECEMBER 2009, DECEMBER 2010 SUPPLEMENTAL NUTRITION ASSISTANCE HOUSEHOLDS INCREASED BY 30,952 (7.21%). PERSONS RECEIVING SUPPLEMENTAL NUTRITION ASSISTANCE INCREASED BY 46,210 (4.60%). TOTAL COUPON ISSUANCE INCREASED BY \$2,469,500 (1.88%). THE AVERAGE ALLOTMENT PER HOUSEHOLD DECREASED BY \$15.16 (4.97%). THE AVERAGE ALLOTMENT PER PERSON DECREASED BY \$3.39 (2.59%).

MEDICAL ASSISTANCE PROGRAM (MA) NEW TABLE INCLUDES PROP. 204 CATEGORIES

COMPARING TO JANUARY 2010, FEBRUARY 2010 TOTAL RECIPIENTS TOTAL RECIPIENTS DECREASED BY 6,946 (0.59%). SOBRA WOMEN AT 140% FPL DECREASED BY 248 (2.41%). SOBRA CHILDREN DECREASED BY 812 (1.23%). ADULTS W/O CHILD AT 100% INCREASED BY 446 (0.76%). FOSTER CARE INCREASED BY 69 (0.59%). 1931 AT 36% FPL DECREASED BY 4,919 (1.48%). EMERGENCY SERVICES DECREASED BY 5,083 (6.43%). INFANTS DECREASED BY 513 (1.02%). ADULT W/O CHILD AT 140% INCREASED BY 510 (0.33%). MEDICAL W/SPEND DOWN DECREASED BY 201 (3.10%). SOBRA WOMAN AT 100% INCREASED BY 99 (2.63%). SOBRA CHILD AT 100% INCREASED BY 902 (0.40%). TRANSITIONAL MEDICAL INCREASED BY 1,305 (3.04%). 1931 AT 100% INCREASED BY 1,355 (1.16%). YATI INCREASED BY 10 (3.02%). ALL OTHER CATEGORIES INCREASED BY 134 (0.51%).

COMPARING TO DECEMBER 2009, DECEMBER 2010 TOTAL RECIPIENTS TOTAL RECIPIENTS INCREASED BY 14,067 (1.18%). SOBRA WOMEN AT 140% FPL INCREASED BY 292 (2.84%). SOBRA CHILDREN INCREASED BY 4,471 (6.73%). ADULTS W/O CHILD AT 100% INCREASED BY 6,641 (11.51%). FOSTER CARE INCREASED BY 722 (6.13%). 1931 AT 36% FPL INCREASED BY 756 (0.22%). EMERGENCY SERVICES DECREASED BY 34,564 (40.72%). INFANTS DECREASED BY 3,941 (7.75%). ADULT W/O CHILD AT 140% INCREASED BY 18,548 (12.02%). MEDICAL W/SPEND DOWN INCREASED BY 539 (8.42%). SOBRA WOMAN AT 100% DECREASED BY 105 (2.79%). SOBRA CHILD AT 100% INCREASED BY 4,776 (2.12%). TRANSITIONAL MEDICAL INCREASED BY 3,683 (9.01%). 1931 AT 100% INCREASED BY 10,130 (8.71%). YATI INCREASED BY 24 (7.14%). ALL OTHER CATEGORIES INCREASED BY 2,095 (7.99%).

TANF SUMMARY

TABLES 1, 1A, 1B, & 1C: ARIZONA 1/

	DECEMBER 2010								NOVEMBER 2010			CHANGE FROM DECEMBER 2009		
	FAMILIES (CASES)	PERSONS (RECIP.)	ADULTS	CHILDREN	TOTAL PAYMENTS	AVERAGE	AVERAGE	TOTAL PAYMENTS	FAMILIES (CASES)	PERSONS (RECIP.)	TOTAL PAYMENTS	FAMILIES (CASES)	PERSONS (RECIP.)	TOTAL PAYMENTS
						PAYMENT/ CASE	PAYMENT/ RECIP.							
ARIZONA	19,790	45,017	12,260	32,757	4,217,110	213.09	93.68		43	68	(5,896)	(20,068)	(42,101)	(4,300,573)
REGION														
MARICOPA	12,287	28,631	7,682	20,949	2,626,846	213.79	91.75		41	77	(231)	(12,202)	(25,722)	(2,573,055)
NORTHERN	1,077	2,368	659	1,709	223,034	207.09	94.19		3	21	606	(1,864)	(4,536)	(486,510)
APACHE	40	83	19	64	7,819	195.48	94.20		1	9	468	38	76	7,206
COCONINO	83	197	52	145	17,597	212.01	89.32		(2)	(9)	(664)	(140)	(294)	(29,591)
MOHAVE	621	1,303	367	936	127,470	205.27	97.83		2	23	815	(588)	(1,180)	(120,483)
NAVAJO	333	785	221	564	70,148	210.65	89.36		2	(2)	(13)	(1,174)	(3,138)	(343,642)
CENTRAL	2,299	5,080	1,403	3,677	494,879	215.26	97.42		(49)	(138)	(12,925)	(2,179)	(4,540)	(455,104)
GILA	514	1,144	433	711	129,014	251.00	112.77		(8)	(20)	(1,768)	(221)	(417)	(49,329)
LA PAZ	88	201	53	148	18,049	205.10	89.80		(2)	(10)	(768)	(91)	(184)	(17,257)
PINAL	923	2,062	519	1,543	189,014	204.78	91.67		(7)	(27)	(1,113)	(980)	(2,117)	(207,584)
YAVAPAI	285	556	123	433	56,201	197.20	101.08		(7)	(17)	(1,102)	(398)	(787)	(75,782)
YUMA	489	1,117	275	842	102,601	209.82	91.85		(25)	(64)	(8,174)	(489)	(1,035)	(105,152)
SOUTHERN	4,127	8,938	2,516	6,422	872,351	211.38	97.60		48	108	6,654	(3,823)	(7,303)	(785,904)
COCHISE	346	685	160	525	70,960	205.09	103.59		(5)	2	(1,699)	(439)	(852)	(89,418)
GRAHAM	231	450	148	302	53,219	230.39	118.26		20	43	3,608	(47)	(89)	(8,650)
GREENLEE	16	38	11	27	3,230	201.88	85.00		(2)	(2)	(58)	(9)	(13)	(2,196)
PIMA	3,422	7,530	2,153	5,377	722,410	211.11	95.94		41	72	5,180	(3,183)	(6,043)	(654,430)
SANTA CRUZ	112	235	44	191	22,532	201.18	95.88		(6)	(7)	(377)	(145)	(306)	(31,210)

1/EXCLUDES: PRIOR MONTH NET TOTALS OF 1,387 CASES; 3,442 RECIPIENTS; \$310,201.
 GRANT DIVERSION TOTALS OF: 1,989 CASES; \$1,507,654.
 ZERO PAY TOTALS OF 3,462 CASES; 10,249 RECIPIENTS.

RRP: 300 CASES; 495 RECIPIENTS; \$61,699.

1/INCLUDES: TANF CHILD ONLY: 8,119 CASES; 13,685 RECIPIENTS; \$1,537,658.

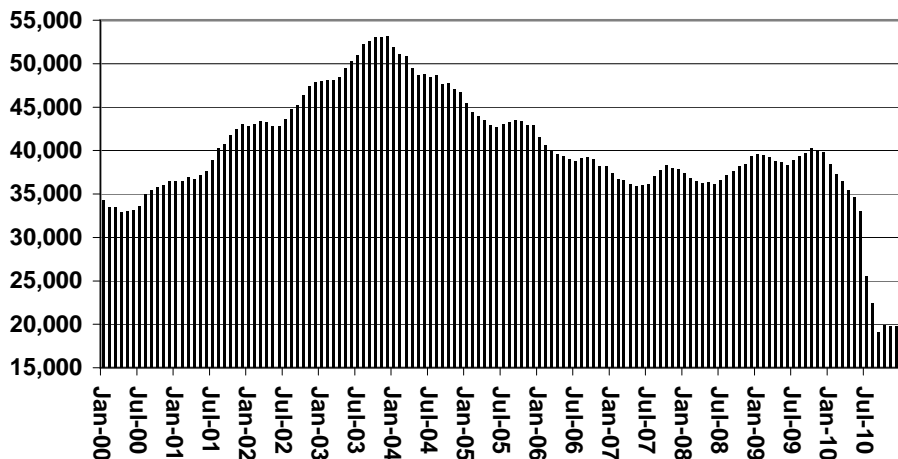
	CURRENT MO. CASES	CURRENT MO. RECIP.	CURRENT MO. DOLLARS	PRIOR MO. CASES	PRIOR MO. RECIP.	PRIOR MO. DOLLARS
PASQUA/YAQUI	257	724	\$75,635	18	65	\$7,529
WM APACHE	0	0	\$0	0	0	\$0
SALT RIVER	91	289	\$26,795	14	40	\$1,960
SAN CARLOS	535	1,183	\$138,280	30	70	\$4,754
HOPÍ	124	359	\$29,510	9	27	\$1,463
TOTAL	1,007	2,555	\$270,220	71	202	\$15,706

TANF SUMMARY

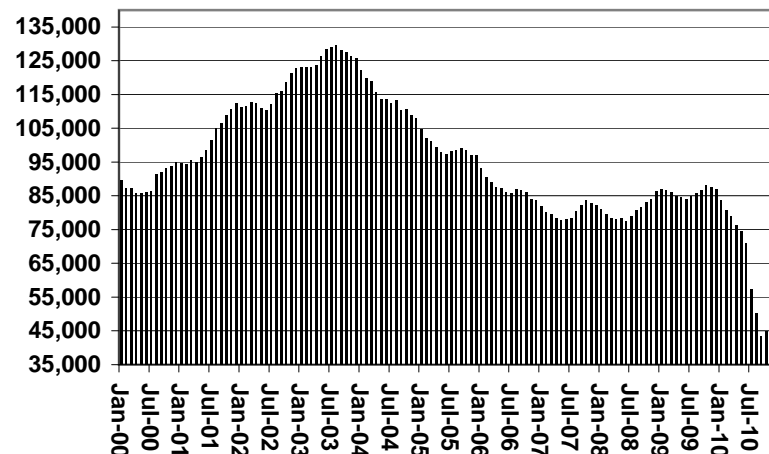
TABLES 1, 1A, 1B, & 1C

COMPARISON OF CASES, RECIPIENTS, PAYMENTS & AVERAGE PAYMENTS FOR 2000, 2001, 2002, 2003, 2004, 2005, 2006, 2007, 2008, 2009, & 2010

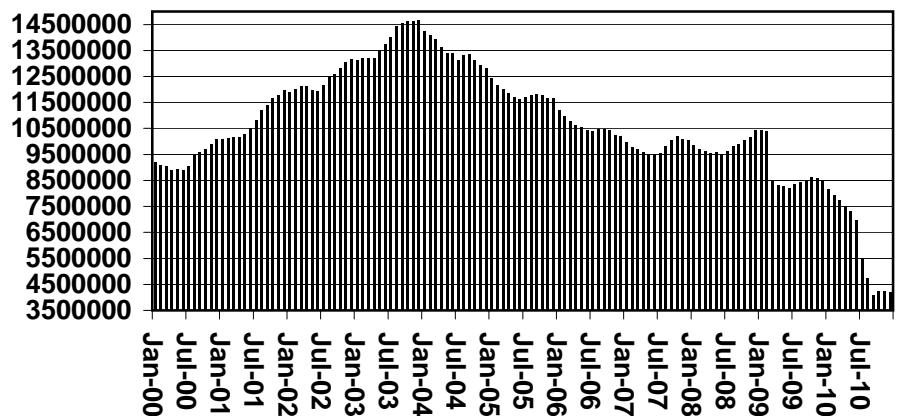
Cases



Recipients



Payments



Average Payments Per Recipient

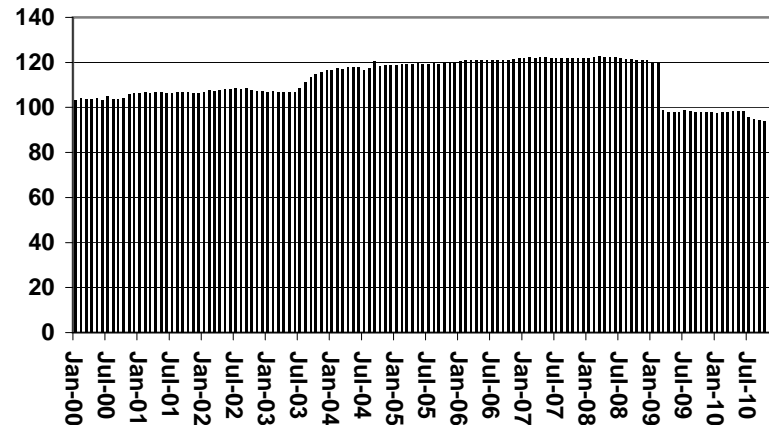
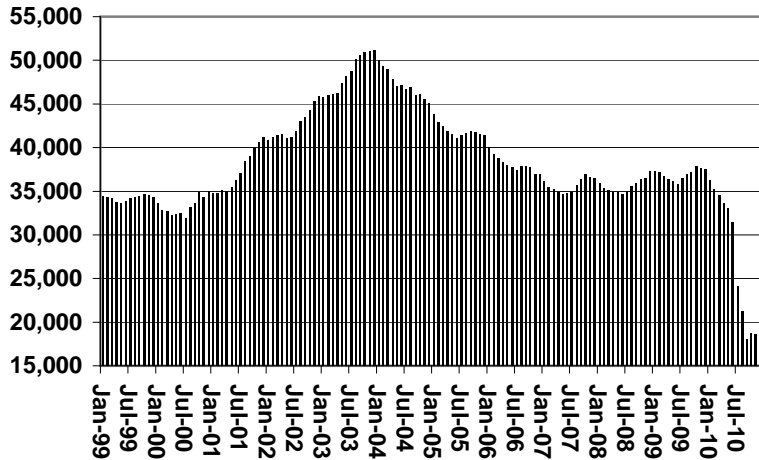


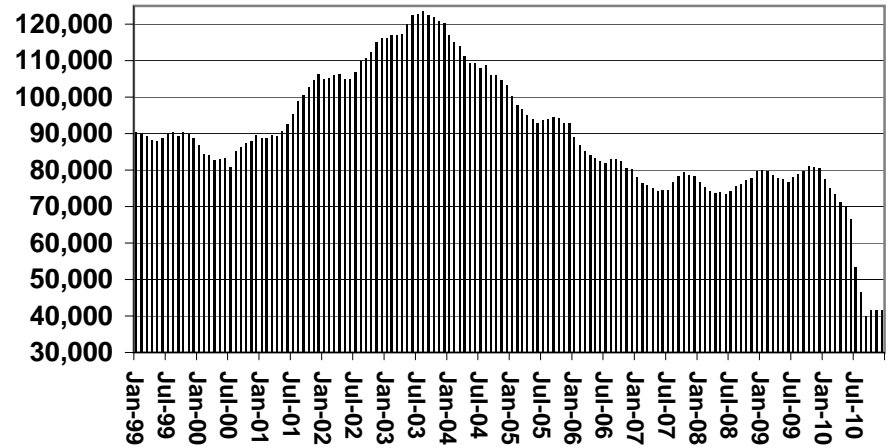
CHART 1

CASH ASSISTANCE PROGRAM COMPARISON OF CASES, RECIPIENTS, PAYMENTS & AVERAGE PAYMENTS FOR 1999, 2000, 2001, 2002, 2003, 2004, 2005, 2006, 2007, 2008, 2009, & 2010

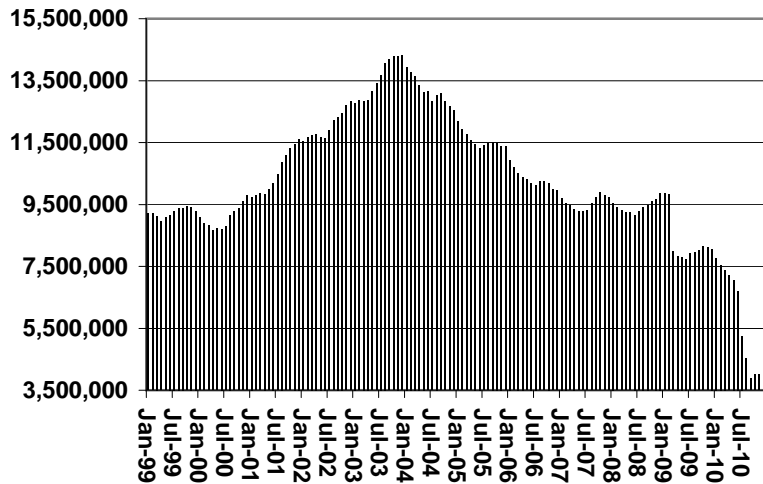
Cases



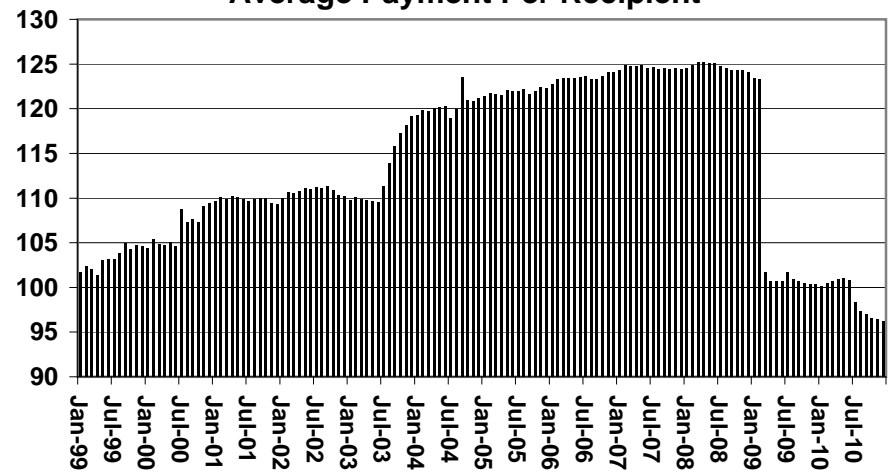
Recipients



Payments



Average Payment Per Recipient



**TABLE 1A
CA-UP**

CASH ASSISTANCE UNEMPLOYED PARENT PROGRAM: ARIZONA 1

	DECEMBER 2010							CHANGE FROM			NOVEMBER 2010			DECEMBER 2009		
	FAMILIES (CASES)	PERSONS (RECIP.)	ADULTS	CHILDREN	TOTAL PAYMENTS	AVERAGE PAYMENT/ CASE	AVERAGE PAYMENT/ RECIP.	FAMILIES (CASES)	PERSONS (RECIP.)	TOTAL PAYMENTS	FAMILIES (CASES)	PERSONS (RECIP.)	TOTAL PAYMENTS			
	ARIZONA	595	2,203	888	1,315	167,638	281.74	76.10	(12)	(21)	(2,801)	(783)	(2,541)	(210,386)		
REGION																
MARICOPA	411	1,531	571	960	118,871	289.22	77.64	(20)	(30)	(4,123)	(579)	(1,770)	(146,657)			
NORTHERN	21	80	41	39	5,783	275.38	72.29	10	40	3,027	(23)	(81)	(7,318)			
APACHE	1	3	2	1	278	278.00	92.67	1	3	278	1	3	278			
COCONINO	1	4	2	2	335	335.00	83.75	1	4	335	(1)	(5)	(392)			
MOHAVE	16	62	31	31	4,573	285.81	73.76	8	33	2,414	(6)	(25)	(1,696)			
NAVAJO	3	11	6	5	597	199.00	54.27	0	0	0	(17)	(54)	(5,508)			
CENTRAL	48	176	74	102	12,454	259.46	70.76	1	2	242	(35)	(122)	(9,839)			
GILA	2	8	2	6	503	251.50	62.88	1	4	168	(4)	(17)	(1,126)			
LA PAZ	4	19	8	11	1,200	300.00	63.16	(1)	(1)	(351)	0	7	395			
PINAL	32	119	51	68	8,281	258.78	69.59	1	(1)	425	(31)	(112)	(9,108)			
YAVAPAI	3	9	3	6	834	278.00	92.67	1	6	450	(10)	(32)	(2,136)			
YUMA	7	21	10	11	1,636	233.71	77.90	(5)	(15)	(1,070)	(17)	(78)	(5,815)			
SOUTHERN	115	416	202	214	30,530	265.48	73.39	1	(24)	(1,327)	(119)	(458)	(38,621)			
COCHISE	5	20	6	14	1,489	297.80	74.45	2	8	578	(6)	(19)	(1,543)			
GRAHAM	1	5	2	3	392	0.00	0.00	1	5	392	(2)	(5)	(499)			
GREENLEE	0	0	0	0	0	0.00	0.00	0	0	0	(1)	(4)	(273)			
PIMA	109	391	194	197	28,649	262.83	73.27	(2)	(37)	(2,297)	(108)	(423)	(35,831)			
SANTA CRUZ	0	0	0	0	0	0.00	0.00	0	0	0	(2)	(7)	(475)			

1/EXCLUDES: PRIOR MONTH NET TOTALS OF: 69 CASES; 297 RECIPIENTS; \$37,044.
GRANT DIVERSION TOTALS OF: 0 CASES; \$0.
ZERO PAY TOTALS OF 23 CASES; 108 RECIPIENTS.

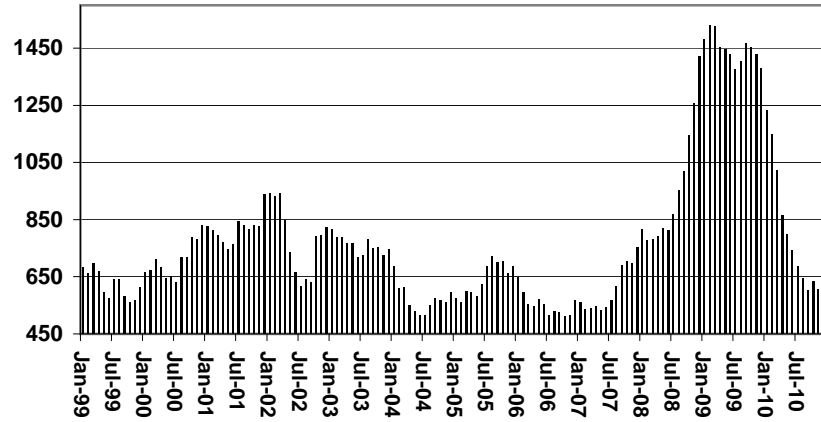
	CURRENT MO. CASES	CURRENT MO. RECIP.	CURRENT MO. DOLLARS	PRIOR MO. CASES	PRIOR MO. RECIP	PRIOR MO. DOLLARS
PASQUAYYAQUI	6	27	\$2,133	1	8	\$191
WM APACHE	0	0	\$0	0	0	\$0
SALT RIVER	0	0	\$0	0	0	\$0
SAN CARLOS	0	0	\$0	0	0	\$0
HOPI	0	0	\$0	0	0	\$0
TOTAL	6	27	\$2,133	1	8	\$191

CASES WITH GRANT UNDER \$100 (SEE TABLE 1C).

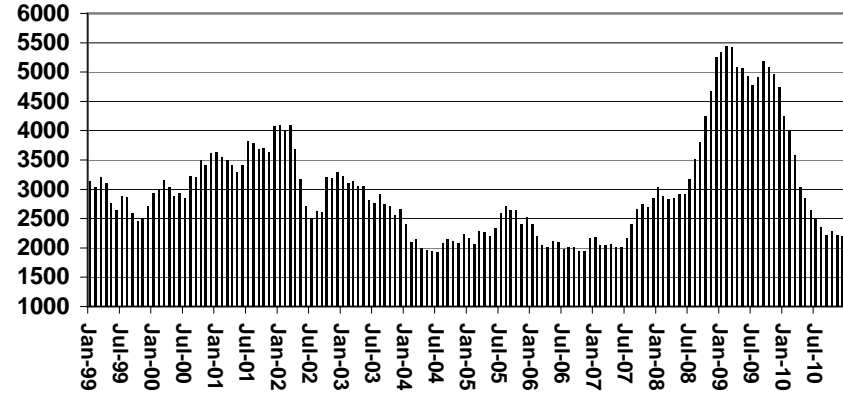
CHART 1A

CASH ASSISTANCE UNEMPLOYED PARENT PROGRAM COMPARISON OF CASES, RECIPIENTS, PAYMENTS & AVERAGE PAYMENTS FOR 1999, 2000, 2001, 2002, 2003, 2004, 2005, 2006, 2007, 2008, 2009, & 2010

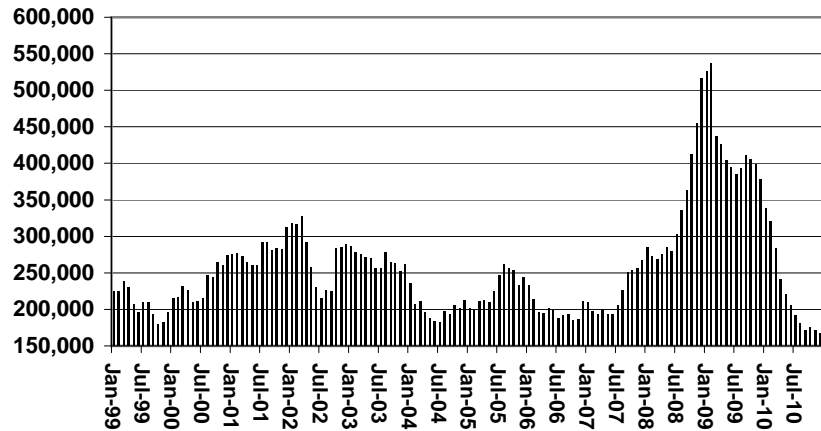
Cases



Recipients



Payments



Average Payment Per Recipient

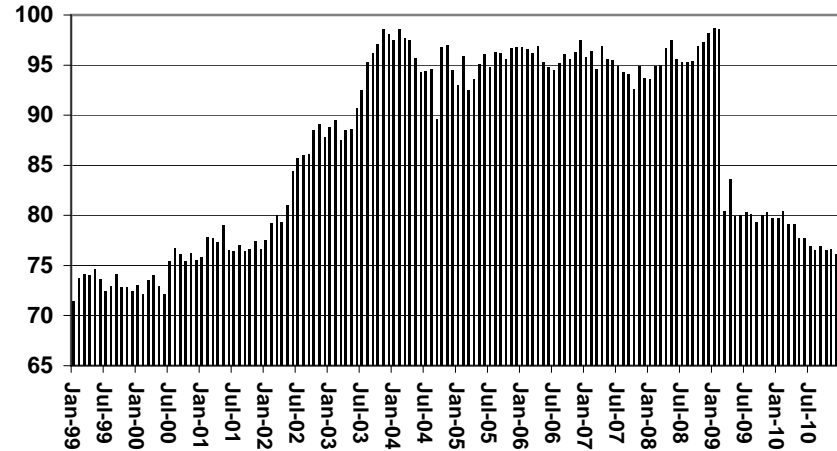


TABLE 1B 1/

**CASH ASSISTANCE: ARIZONA
CASES WITH GRANT UNDER \$100**

	DECEMBER 2010							CHANGE FROM			NOVEMBER 2010			DECEMBER 2009		
	FAMILIES (CASES)	PERSONS (RECIP.)	ADULTS	CHILDREN	TOTAL PAYMENTS	AVERAGE PAYMENT/ CASE	AVERAGE PAYMENT/ RECIP.	FAMILIES (CASES)	PERSONS (RECIP.)	TOTAL PAYMENTS	FAMILIES (CASES)	PERSONS (RECIP.)	TOTAL PAYMENTS			
	ARIZONA	484	1,006	261	745	36,390	75.19	36.17	15	11	1,491	(455)	(829)	(29,965)		
REGION																
MARICOPA	294	637	151	486	21,687	73.77	34.05	3	(7)	269	(297)	(537)	(18,853)			
NORTHERN	36	68	20	48	2,676	74.33	39.35	10	19	1,219	(16)	(32)	(825)			
APACHE	1	2	1	1	69	69.00	34.50	0	1	(13)	1	2	69			
COCONINO	5	12	4	8	542	108.40	45.17	2	6	343	3	7	364			
MOHAVE	20	36	11	25	1,300	65.00	36.11	4	7	593	(16)	(33)	(1,103)			
NAVAJO	10	18	4	14	765	76.50	42.50	4	5	296	(4)	(8)	(155)			
CENTRAL	48	87	25	62	3,567	74.31	41.00	4	4	203	(61)	(122)	(4,184)			
GILA	1	3	1	2	121	121.00	40.33	(2)	(3)	(172)	(12)	(16)	(697)			
LA PAZ	4	6	2	4	260	65.00	43.33	(2)	(3)	(162)	(5)	(17)	(310)			
PINAL	21	38	9	29	1,660	79.05	43.68	0	(1)	13	(16)	(30)	(1,069)			
YAVAPAI	9	15	6	9	574	63.78	38.27	3	4	126	(20)	(39)	(1,283)			
YUMA	13	25	7	18	952	73.23	38.08	5	7	398	(8)	(20)	(825)			
SOUTHERN	106	214	65	149	8,460	79.81	39.53	(2)	(5)	(200)	(81)	(138)	(6,103)			
COCHISE	7	12	3	9	572	81.71	47.67	1	(1)	(45)	(18)	(32)	(1,578)			
GRAHAM	2	3	1	2	68	34.00	22.67	0	(1)	(94)	(4)	(9)	(469)			
GREENLEE	3	6	3	3	258	86.00	43.00	1	2	92	3	6	160			
PIMA	88	175	53	122	7,041	80.01	40.23	(3)	(4)	(65)	(62)	(105)	(4,366)			
SANTA CRUZ	6	18	5	13	521	86.83	28.94	(1)	(1)	(88)	0	2	150			

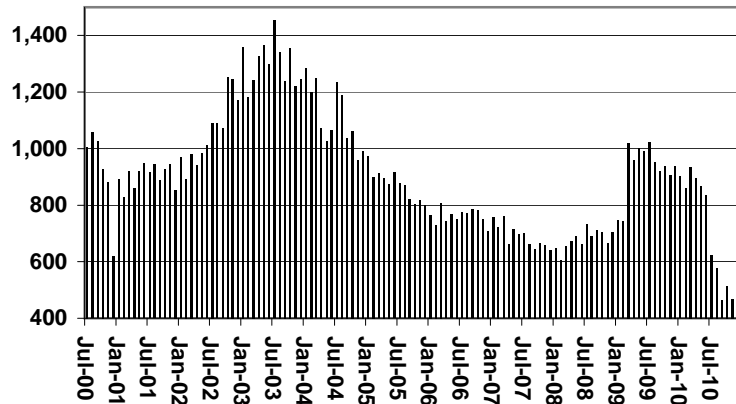
EXCLUDES: PRIOR MONTH NET TOTALS OF 538 CASES; 1,132 RECIPIENTS; \$35,690.

CHART 1B

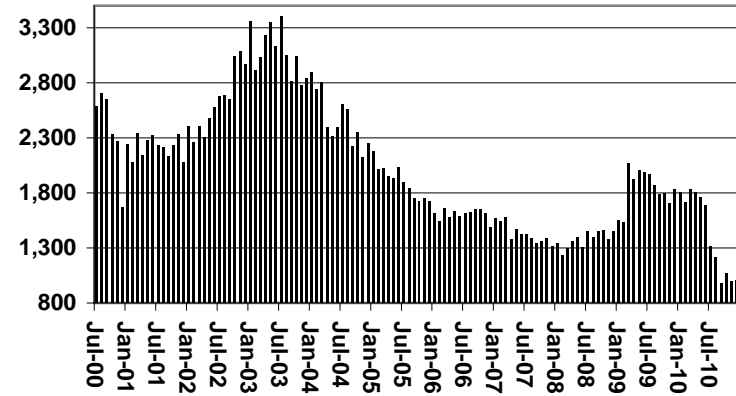
CASH ASSISTANCE PROGRAM CASES WITH GRANT UNDER \$100

FOR 1999, 2000, 2001, 2002, 2003, 2004, 2005, 2006, 2007, 2008, 2009, & 2010

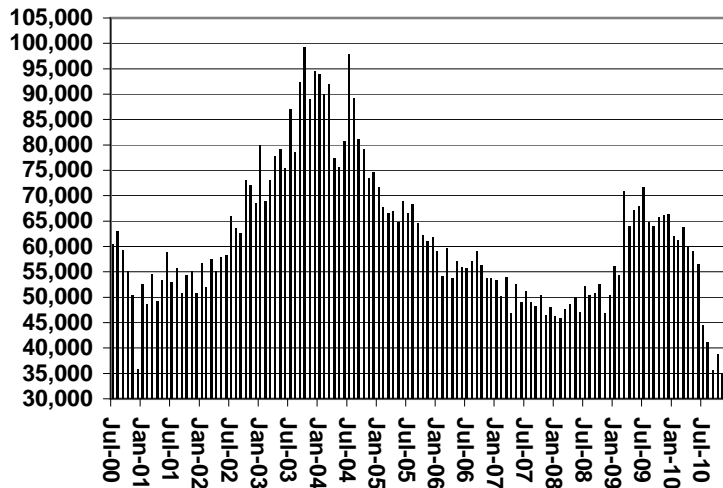
Cases



Recipients



Payments



Average Payment Per Recipient

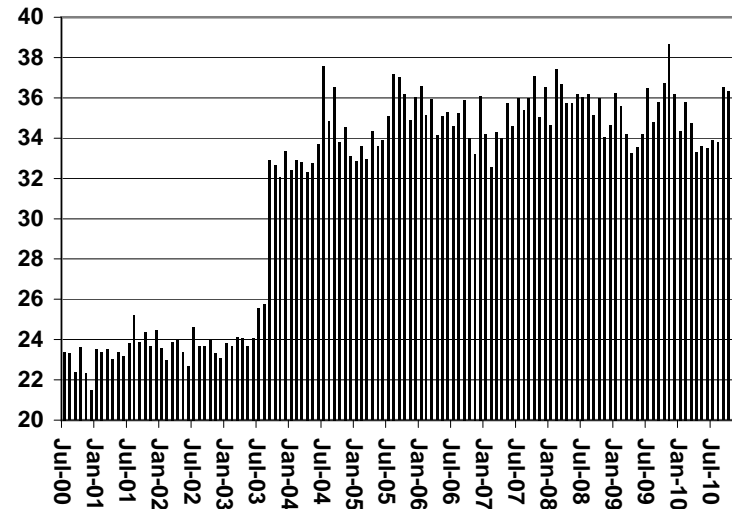


TABLE 1C 1/

CASH ASSISTANCE UNEMPLOYED PARENT PROGRAM: ARIZONA
 CASES WITH GRANT UNDER \$100

	CHANGE FROM												
	DECEMBER 2010							NOVEMBER 2010			DECEMBER 2009		
	FAMILIES (CASES)	PERSONS (RECIP.)	ADULTS	CHILDREN	TOTAL PAYMENTS	AVERAGE PAYMENT/ CASE	AVERAGE PAYMENT/ RECIP.	FAMILIES (CASES)	PERSONS (RECIP.)	TOTAL PAYMENTS	FAMILIES (CASES)	PERSONS (RECIP.)	TOTAL PAYMENTS
ARIZONA	34	91	19	72	2,004	58.94	22.02	1	0	337	(15)	(36)	(756)
REGION													
MARICOPA	30	81	17	64	1,797	59.90	22.19	2	4	331	(12)	(24)	(548)
NORTHERN	0	0	0	0	0	0.00	0.00	0	0	0	0	0	0
APACHE	0	0	0	0	0	0.00	0.00	0	0	0	0	0	0
COCONINO	0	0	0	0	0	0.00	0.00	0	0	0	0	0	0
MOHAVE	0	0	0	0	0	0.00	0.00	0	0	0	0	0	0
NAVAJO	0	0	0	0	0	0.00	0.00	0	0	0	0	0	0
CENTRAL	2	6	0	6	57	28.50	9.50	(1)	(3)	(42)	(3)	(9)	(259)
GILA	0	0	0	0	0	0.00	0.00	0	0	0	0	0	0
LA PAZ	0	0	0	0	0	0.00	0.00	0	0	0	(1)	(3)	(56)
PINAL	1	3	0	3	28	28.00	9.33	(1)	(3)	(18)	(1)	(4)	(69)
YAVAPAI	0	0	0	0	0	0.00	0.00	0	0	0	(2)	(5)	(163)
YUMA	1	3	0	3	29	29.00	9.67	0	0	(24)	1	3	29
SOUTHERN	2	4	2	2	150	75.00	37.50	0	(1)	48	0	(3)	51
COCHISE	0	0	0	0	0	0.00	0.00	0	0	0	0	0	0
GRAHAM	0	0	0	0	0	0.00	0.00	0	0	0	0	0	0
GREENLEE	0	0	0	0	0	0.00	0.00	0	0	0	0	0	0
PIMA	2	4	2	2	150	75.00	37.50	0	(1)	48	0	(3)	51
SANTA CRUZ	0	0	0	0	0	0.00	0.00	0	0	0	0	0	0

EXCLUDES: PRIOR MONTH NET TOTALS OF 42 CASES; 154 RECIPIENTS; \$2,192.

CHART 1C

CASH ASSISTANCE UNEMPLOYED PARENT PROGRAM

CASES WITH GRANT UNDER \$100

FOR 1999, 2000, 2001, 2002, 2003, 2004, 2005, 2006, 2007, 2008, 2009, & 2010

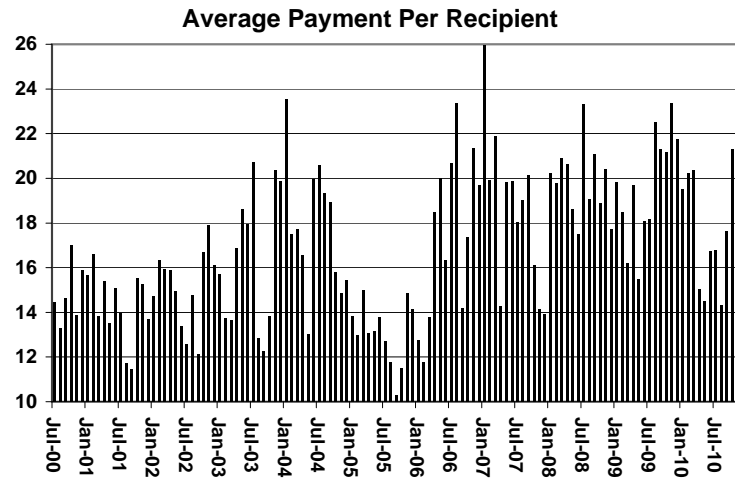
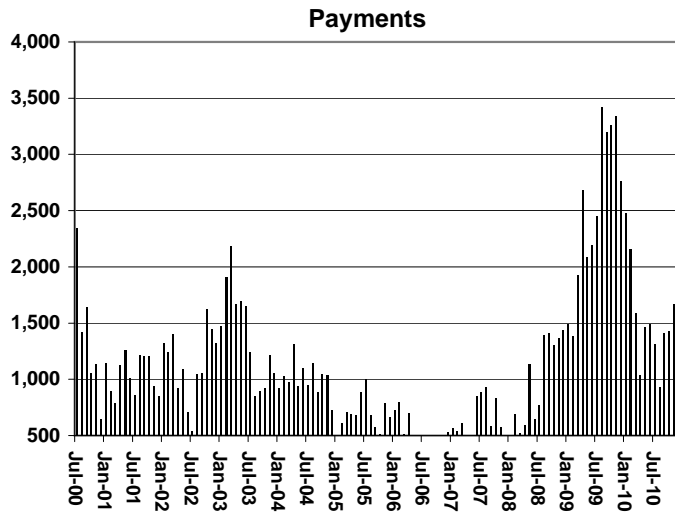
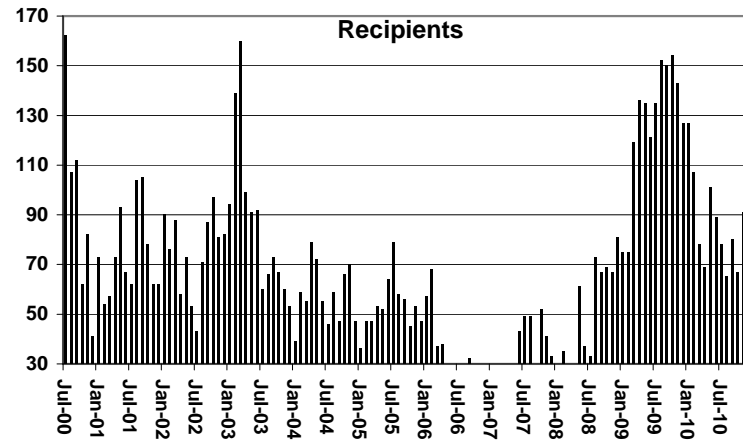
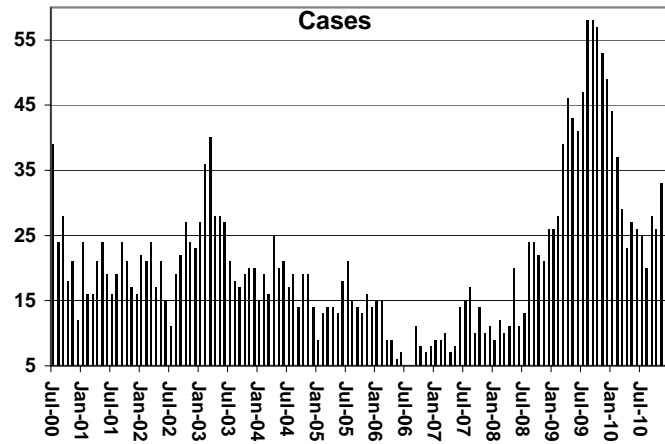


TABLE 4

TUBERCULOSIS CONTROL: ARIZONA 1/

	DECEMBER 2010						CHANGE FROM					
							NOVEMBER 2010			DECEMBER 2009		
	NUMBER OF CASES	PERSONS (RECIP.)	TOTAL PAYMENTS	AVERAGE PAYMENT/ CASE	AVERAGE PAYMENT/ RECIP.		NUMBER OF CASES	PERSONS (RECIP.)	TOTAL PAYMENTS	NUMBER OF CASES	PERSONS (RECIP.)	TOTAL PAYMENTS
ARIZONA	1	1	173	173.00	173.00		0	0	0	0	0	0
REGION												
MARICOPA	1	1	173	173.00	173.00		0	0	0	0	0	0
NORTHERN	0	0	0	0.00	0.00		0	0	0	0	0	0
APACHE	0	0	0	0.00	0.00		0	0	0	0	0	0
COCONINO	0	0	0	0.00	0.00		0	0	0	0	0	0
MOHAVE	0	0	0	0.00	0.00		0	0	0	0	0	0
NAVAJO	0	0	0	0.00	0.00		0	0	0	0	0	0
CENTRAL	0	0	0	0.00	0.00		0	0	0	0	0	0
GILA	0	0	0	0.00	0.00		0	0	0	0	0	0
LA PAZ	0	0	0	0.00	0.00		0	0	0	0	0	0
PINAL	0	0	0	0.00	0.00		0	0	0	0	0	0
YAVAPAI	0	0	0	0.00	0.00		0	0	0	0	0	0
YUMA	0	0	0	0.00	0.00		0	0	0	0	0	0
SOUTHERN	0	0	0	0.00	0.00		0	0	0	0	0	0
COCHISE	0	0	0	0.00	0.00		0	0	0	0	0	0
GRAHAM	0	0	0	0.00	0.00		0	0	0	0	0	0
GREENLEE	0	0	0	0.00	0.00		0	0	0	0	0	0
PIMA	0	0	0	0.00	0.00		0	0	0	0	0	0
SANTA CRUZ	0	0	0	0.00	0.00		0	0	0	0	0	0

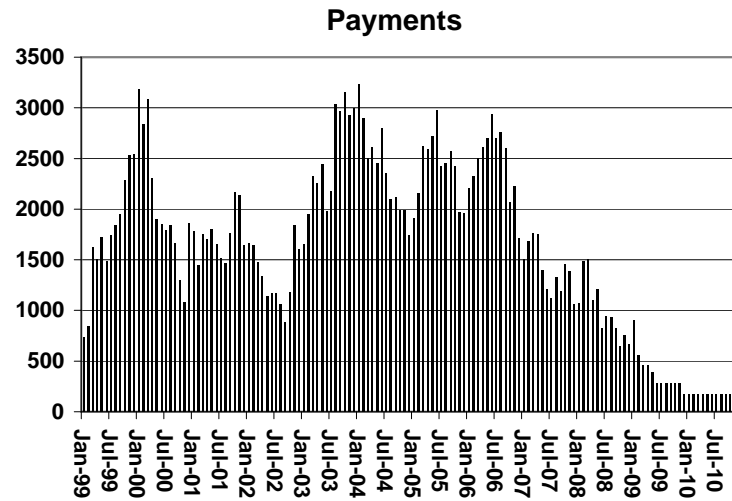
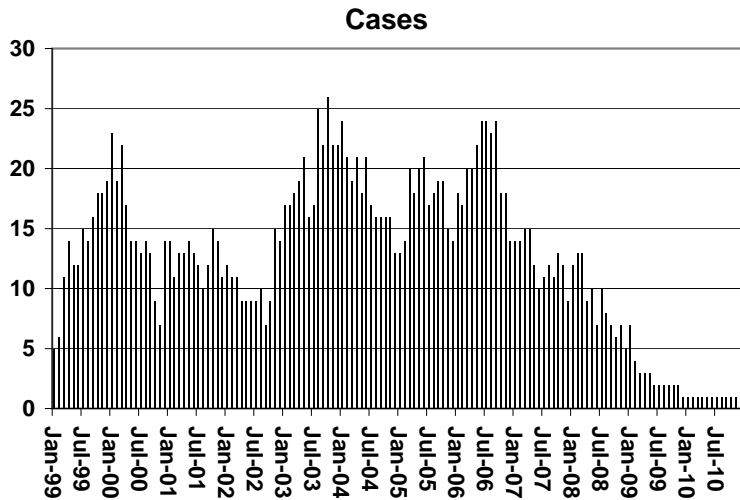
1/EXCLUDES: PRIOR MONTH NET TOTALS OF : 0 CASES; 0 RECIPIENTS; \$0.

CHART 4

TUBERCULOSIS CONTROL PROGRAM

COMPARISON OF CASES, PAYMENTS & AVERAGE PAYMENTS

FOR 1999, 2000, 2001, 2002, 2003, 2004, 2005, 2006, 2007, 2008, 2009, & 2010



Average Payment Per Case

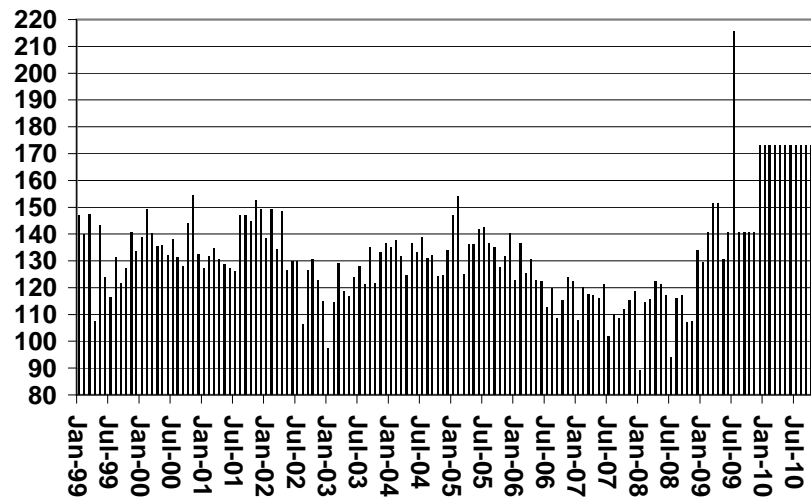


TABLE 6

SUPPLEMENTAL NUTRITION ASSISTANCE PROGRAM: ARIZONA 1

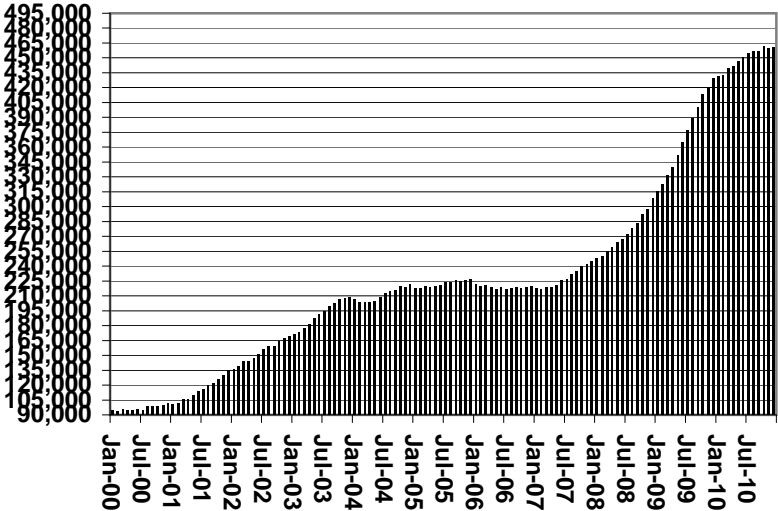
	CHANGE FROM												
	DECEMBER 2010							NOVEMBER 2010			DECEMBER 2009		
	HOUSEHOLDS	PERSONS	ADULTS	CHILDREN	TOTAL PAYMENTS ISSUANCE	AVERAGE PAYMT./ HOUSEHOLD	AVERAGE PAYMT./ PERSON	HOUSEHOLDS	PERSONS	TOTAL PAYMENTS ISSUANCE	HOUSEHOLDS	PERSONS	TOTAL PAYMENTS ISSUANCE
ARIZONA	460,322	1,050,686	543,928	506,758	133,579,662	290.19	127.14	722	505	(283,588)	30,952	46,210	2,469,500
REGION													
MARICOPA	247,108	566,970	275,721	291,249	72,428,758	293.11	127.75	(491)	(766)	(217,489)	13,028	18,419	(425,542)
NORTHERN	52,753	127,233	71,481	55,752	15,893,404	301.28	124.92	149	(64)	(77,754)	3,537	4,242	463,631
APACHE	9,928	27,323	14,745	12,578	3,360,221	338.46	122.98	55	(40)	(22,917)	710	571	82,228
COCONINO	9,531	23,339	12,482	10,857	2,869,915	301.11	122.97	12	(4)	(17,745)	415	242	(36,728)
MOHAVE	20,283	42,859	25,774	17,085	5,430,575	267.74	126.71	40	188	(5,171)	1,551	2,453	273,231
NAVAJO	13,011	33,712	18,480	15,232	4,232,693	325.32	125.55	42	(208)	(31,921)	861	976	144,900
CENTRAL	60,472	141,412	77,023	64,389	17,663,324	292.09	124.91	543	739	38,001	5,350	9,193	1,022,488
GILA	6,056	13,070	7,709	5,361	1,709,690	282.31	130.81	88	136	9,428	623	1,032	118,074
LA PAZ	2,030	4,096	2,388	1,708	530,294	261.23	129.47	60	78	12,147	178	197	21,088
PINAL	21,691	52,956	27,630	25,326	6,761,832	311.73	127.69	326	673	74,140	2,073	3,981	460,822
YAVAPAI	14,747	29,607	17,876	11,731	3,667,706	248.71	123.88	238	375	39,406	1,326	1,931	159,647
YUMA	15,948	41,683	21,420	20,263	4,993,802	313.13	119.80	(169)	(523)	(97,120)	1,150	2,052	262,857
SOUTHERN	99,989	215,071	119,703	95,368	27,594,176	275.97	128.30	521	596	(26,346)	9,037	14,356	1,408,923
COCHISE	10,462	22,556	12,806	9,750	2,822,281	269.76	125.12	73	160	16,213	791	1,332	162,489
GRAHAM	3,458	7,957	4,452	3,505	1,025,034	296.42	128.82	21	60	2,874	325	379	83,635
GREENLEE	502	1,083	616	467	136,197	271.31	125.76	19	46	2,735	(19)	(137)	(6,324)
PIMA	81,053	171,453	95,753	75,700	22,177,448	273.62	129.35	352	223	(45,201)	7,548	11,996	1,079,893
SANTA CRUZ	4,514	12,022	6,076	5,946	1,433,216	317.50	119.22	56	107	(2,967)	392	786	89,230

1/EXCLUDES: PRIOR MONTH NET TOTALS OF : 13,862 CASES; 33,553 RECIPIENTS; \$3,087,371.
 AGED CANCELATIONS: 10,091 CASES; 13,358 RECIPIENTS; \$624,234.
 SNAP CONVERSIONS: 0 CASES; 0 RECIPIENTS; \$0.
 SNAP CHILD ONLY: 57,645 CASES; 135,654 RECIPIENTS; \$20,518,696.
 SNAP ZERO PAY: 13,422 CASES; 55,379 RECIPIENTS.

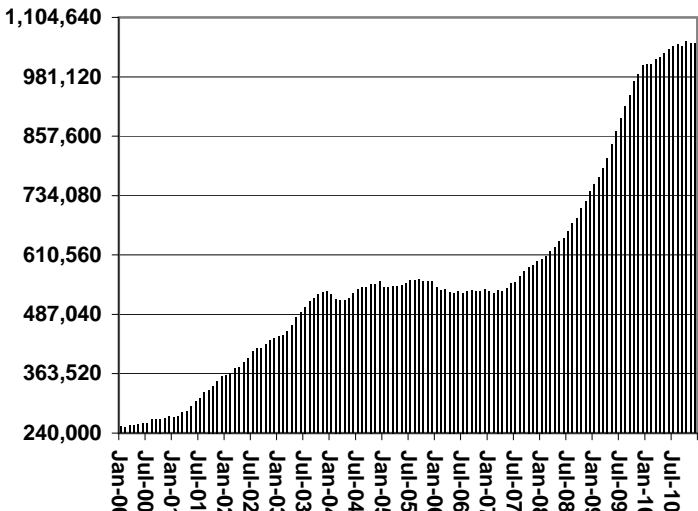
CHART 6

SUPPLEMENTAL NUTRITION ASSISTANCE PROGRAM (SNAP) COMPARISON OF HOUSEHOLDS, RECIPIENTS, PAYMENTS & AVERAGE PAYMENTS FOR 1999, 2000, 2001, 2002, 2003, 2004, 2005, 2006, 2007, 2008, 2009, & 2010

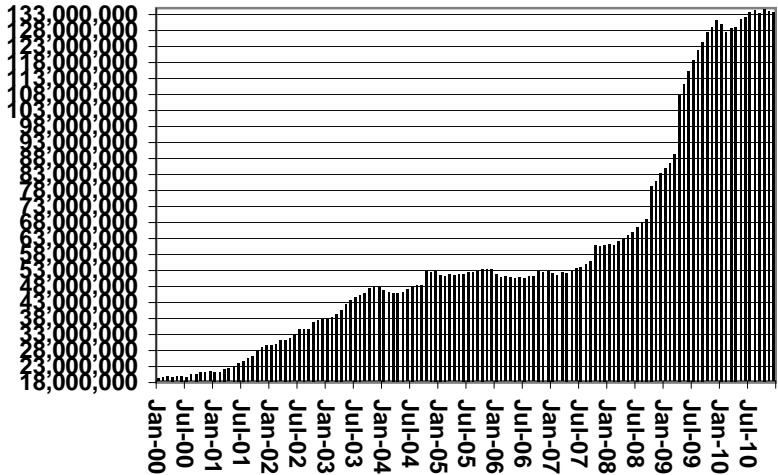
Households



Recipients



Payments



Average Payment Per Household

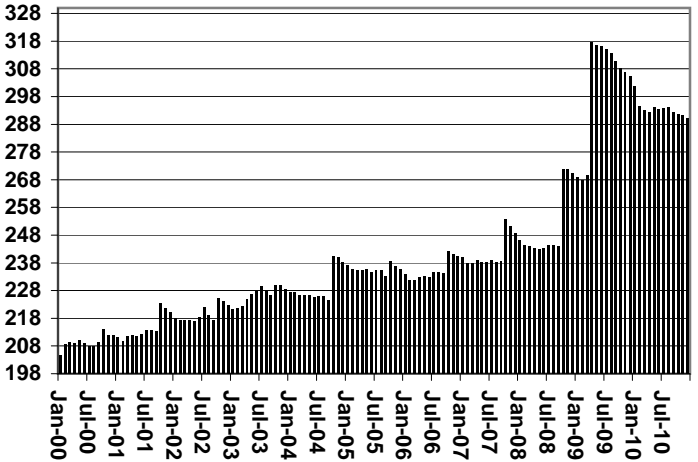


TABLE 7A
MEDICAL ASSISTANCE PROGRAM
RECIPIENTS

DECEMBER 2010

	SOBRA WOMAN 133% FPL	SOBRA CHILD	ADULT W/O CHILD 100% FPL	FOSTER CARE	1931 36% FPL	FEDERAL EMERGENCY SERVICES	INFANTS	ADULT W/O CHILD 40% FPL	MEDICAL W/SPEND DOWN	SOBRA WOMAN 100% FPL	SOBRA CHILD 100% FPL	TRANSITIONAL MEDICAL T1 - T4	1931 100% FPL	YATI	OTHER	TOTAL CASES
ARIZONA	10,586	70,869	64,332	12,502	337,606	50,310	46,936	172,799	6,941	3,655	229,783	44,541	126,408	360	28,312	1,205,940
REGION																
MARICOPA	5,626	40,483	31,621	6,607	187,209	38,985	27,987	87,977	3,756	1,852	134,202	22,413	65,689	199	14,618	669,224
NORTHERN	1,171	7,688	7,737	657	43,642	1,075	4,809	25,537	909	518	23,302	5,698	14,962	18	3,033	140,756
APACHE	183	1,501	1,093	34	11,282	82	956	5,736	133	101	4,265	1,121	2,724	0	403	29,614
COCONINO	286	1,495	1,695	129	8,314	372	1,078	4,651	128	106	4,818	1,280	3,053	13	445	27,863
MOHAVE	371	2,374	3,090	343	11,630	401	1,478	8,185	450	171	8,361	1,898	5,308	3	1,589	45,652
NAVAJO	331	2,318	1,859	151	12,416	220	1,297	6,965	198	140	5,858	1,399	3,877	2	596	37,627
CENTRAL	1,729	9,477	9,804	1,549	43,700	3,884	6,082	22,441	1,058	589	29,536	6,752	19,050	44	4,360	160,055
GILA	123	706	797	99	4,516	120	525	2,630	101	38	2,021	407	1,403	0	364	13,850
LA PAZ	45	271	276	17	1,288	132	155	864	21	16	701	206	419	0	164	4,575
PINAL	617	4,071	2,908	638	18,190	1,158	2,240	8,521	351	185	10,552	2,038	6,243	18	1,274	59,004
YAVAPAI	395	1,776	2,810	493	7,300	1,136	1,168	5,250	304	120	6,258	1,572	4,197	21	1,236	34,036
YUMA	549	2,653	3,013	302	12,406	1,338	1,994	5,176	281	230	10,004	2,529	6,788	5	1,322	48,590
SOUTHERN	2,060	13,221	15,170	3,689	63,055	6,366	8,058	36,844	1,218	696	42,743	9,678	26,707	99	6,301	235,905
COCHISE	237	1,268	1,746	244	6,988	449	819	3,332	145	78	4,338	1,014	2,805	3	900	24,366
GRAHAM	116	490	503	73	2,732	24	332	1,459	56	26	1,458	367	919	2	167	8,724
GREENLEE	22	55	65	7	430	2	50	213	4	4	210	58	112	2	41	1,275
PIMA	1,583	10,711	11,904	3,333	49,433	5,444	6,421	30,629	941	537	33,564	7,697	20,806	91	4,714	187,808
SANTA CRUZ	102	697	952	32	3,472	447	436	1,211	72	51	3,173	542	2,065	1	479	13,732

TABLE 7B
MEDICAL ASSISTANCE PROGRAM
RECIPIENTS

CHANGE FROM
NOVEMBER 2010

	SOBRA WOMAN 133% FPL	SOBRA CHILD	ADULT W/O CHILD 100% FPL	FOSTER CARE	1931 36% FPL	FEDERAL EMERGENCY SERVICES	INFANTS	ADULT W/O CHILD 40% FPL	MEDICAL W/SPEND DOWN	SOBRA WOMAN 100% FPL	SOBRA CHILD 100% FPL	TRANSITIONAL MEDICAL T1 - T4	1931 100% FPL	YATI	OTHER	TOTAL CASES
ARIZONA	(235)	(35)	294	290	(1,841)	(915)	(91)	(240)	(233)	(161)	764	(744)	(124)	24	217	(3,030)
REGION																
MARICOPA	(181)	125	188	202	(347)	(671)	(40)	(131)	(141)	(81)	542	(749)	(119)	14	76	(1,313)
NORTHERN	12	(43)	133	16	(443)	(1)	(40)	(95)	(44)	(43)	23	(189)	28	0	65	(621)
APACHE	(1)	(17)	45	2	(104)	(3)	(4)	(6)	14	(7)	(16)	(82)	(14)	0	7	(186)
COCONINO	9	3	15	(2)	(28)	36	6	(46)	(20)	0	(8)	12	(6)	2	19	(8)
MOHAVE	0	5	13	12	(126)	(25)	(7)	(63)	(31)	(30)	18	(78)	64	(2)	35	(215)
NAVAJO	4	(34)	60	4	(185)	(9)	(35)	20	(7)	(6)	29	(41)	(16)	0	4	(212)
CENTRAL	(10)	(109)	11	35	(350)	(123)	29	10	10	(3)	82	22	74	7	(4)	(319)
GILA	4	(12)	19	0	(26)	(6)	3	14	(8)	(6)	60	(9)	16	0	1	50
LA PAZ	(2)	0	2	(1)	40	3	4	8	(5)	2	(16)	(9)	2	0	1	29
PINAL	11	(36)	(4)	11	(63)	(7)	5	69	9	0	175	(43)	115	3	(3)	242
YAVAPAI	6	(44)	36	22	(11)	(15)	(5)	(20)	20	(1)	(13)	(81)	25	4	(9)	(86)
YUMA	(29)	(17)	(42)	3	(290)	(98)	22	(61)	(6)	2	(124)	164	(84)	0	6	(554)
SOUTHERN	(56)	(8)	(38)	37	(701)	(120)	(40)	(24)	(58)	(34)	117	172	(107)	3	80	(777)
COCHISE	(5)	33	2	4	(29)	2	(4)	13	(20)	(5)	(6)	(3)	(17)	0	25	(10)
GRAHAM	2	2	(11)	3	(46)	(4)	(10)	5	(11)	(2)	41	25	17	0	10	21
GREENLEE	(1)	2	(2)	0	(7)	0	3	2	(1)	1	(7)	(9)	(2)	0	7	(14)
PIMA	(44)	(34)	(18)	30	(579)	(85)	(26)	(55)	(36)	(25)	67	156	(77)	3	36	(687)
SANTA CRUZ	(8)	(11)	(9)	0	(40)	(33)	(3)	11	10	(3)	22	3	(28)	0	2	(87)

TABLE 7C
MEDICAL ASSISTANCE PROGRAM
RECIPIENTS

CHANGE FROM

DECEMBER 2009

	SOBRA WOMAN 133% FPL	SOBRA CHILD	ADULT W/O CHILD 100% FPL	FOSTER CARE	1931 36% FPL	FEDERAL EMERGENCY SERVICES	INFANTS	ADULT W/O CHILD 40% FPL	MEDICAL W/SPEND DOWN	SOBRA WOMAN 100% FPL	SOBRA CHILD 100% FPL	TRANSITIONAL MEDICAL T1 - T4	3E 1931 100% FPL	YATI	OTHER	TOTAL CASES
ARIZONA	292	4,471	6,641	722	756	(34,564)	(3,941)	18,548	539	(105)	4,776	3,683	10,130	24	2,095	14,067
REGION																
MARICOPA	86	3,071	4,230	557	(1,074)	(27,267)	(2,253)	11,101	313	(40)	2,950	2,151	6,804	(11)	1,400	2,018
NORTHERN	9	363	432	40	431	(825)	(467)	1,938	47	(16)	(394)	642	(15)	0	235	2,420
APACHE	1	91	105	(11)	354	(47)	(52)	539	23	(3)	(363)	181	(170)	(1)	21	668
COCONINO	(9)	78	91	(10)	84	(154)	(115)	131	(5)	(1)	(280)	221	(16)	4	63	82
MOHAVE	(8)	186	126	46	149	(463)	(148)	880	15	(12)	152	163	177	(1)	113	1,375
NAVAJO	25	8	110	15	(156)	(161)	(152)	388	14	0	97	77	(6)	(2)	38	295
CENTRAL	140	276	648	88	1,226	(1,747)	(224)	1,790	50	(19)	1,015	(164)	1,517	16	117	4,729
GILA	6	66	21	6	120	(54)	(39)	81	13	2	7	(29)	84	0	47	331
LA PAZ	14	47	9	0	38	(26)	16	68	(11)	(9)	5	14	14	0	3	182
PINAL	96	57	244	40	751	(549)	23	743	68	(3)	854	9	624	8	(51)	2,914
YAVAPAI	(3)	18	219	30	(87)	(550)	(220)	191	(32)	0	187	29	340	7	58	187
YUMA	27	88	155	12	404	(568)	(4)	707	12	(9)	(38)	(187)	455	1	60	1,115
SOUTHERN	57	761	1,331	37	173	(4,725)	(997)	3,719	129	(30)	1,205	1,054	1,824	19	343	4,900
COCHISE	27	69	90	(10)	295	(157)	(113)	279	44	(6)	194	(74)	117	(1)	76	830
GRAHAM	18	2	6	(4)	248	(32)	(89)	226	(8)	(10)	(34)	(87)	(79)	1	27	185
GREENLEE	10	(2)	(17)	(1)	55	(5)	(20)	50	(5)	(4)	(69)	(6)	(65)	2	17	(60)
PIMA	(11)	576	1,202	49	(577)	(4,362)	(727)	3,015	72	(12)	1,088	1,257	1,689	17	174	3,450
SANTA CRUZ	13	116	50	3	152	(169)	(48)	149	26	2	26	(36)	162	0	49	495

CHART 7

MEDICAL ASSISTANCE PROGRAM

COMPARISON OF RECIPIENTS

FOR 1999, 2000, 2001, 2002, 2003, 2004, 2005, 2006, 2007, 2008, 2009, & 2010

Total Recipients

