



---

DEPARTMENT OF ECONOMIC SECURITY

---

*Your Partner For A Stronger Arizona*

State of Arizona

Department of Economic Security

Family Assistance Administration

Statistical Bulletin

January, 2009

Phone: (602) 542-3678

<http://www.azdes.gov/faa/Statistics.asp>

\*\*\*\* STATISTICAL BULLETIN \*\*\*\*  
ARIZONA DEPARTMENT OF ECONOMIC SECURITY  
FAMILY ASSISTANCE ADMINISTRATION  
BOX 6123, PHOENIX, ARIZONA 85005  
PHONE (602) 542-3678

JANUARY 2009

THIS ISSUE OF THE STATISTICAL BULLETIN COMPARES JANUARY 2009 DATA FOR EACH OF THE INDICATED PROGRAMS WITH THE INFORMATION FOR DECEMBER 2008 AND JANUARY 2008. STATEWIDE SUMMARIES OF ACTIVITY WITHIN EACH OF THE SPECIFIC PROGRAMS FOR THIS REPORT PERIOD ARE DISCUSSED BELOW. THE TABLES COMPARE CURRENT AND PRIOR MONTH DATA. DISTRICT AND COUNTY COMPARISONS ARE PROVIDED WITHIN THIS BULLETIN

CASH ASSISTANCE (CA)

COMPARING TO DECEMBER 2008, JANUARY 2009 CASES INCREASED BY 70 (0.19%) TO 37,316. RECIPIENTS INCREASED BY 276 (0.35%) TO 79,898. PAYMENTS DECREASED BY \$24,229 (0.25%) TO \$9,856,943. AVERAGE PAYMENT PER CASE DECREASED BY \$1.14 (0.43%) TO \$264.15. PAYMENT PER RECIPIENT DECREASED BY \$0.73 (0.59%) TO \$123.37.

COMPARING TO JANUARY 2008, JANUARY 2009 CASES INCREASED BY 1,449 (4.04%). RECIPIENTS INCREASED BY 3,226 (4.21%). TOTAL PAYMENTS INCREASED BY \$310,543 (3.25%). THE AVERAGE PAYMENT PER CASE DECREASED BY \$2.01 (0.76%). THE AVERAGE PAYMENT PER RECIPIENT DECREASED BY \$1.14 (0.88%).

CASH ASSISTANCE UNEMPLOYED PARENT PROGRAM (CA-UP)

COMPARING TO DECEMBER 2008, JANUARY 2009 CASES INCREASED BY 59 (4.15%) TO 1,479. RECIPIENTS INCREASED BY 76 (1.45%) TO 5,334. PAYMENTS INCREASED BY \$10,344 (2.00%) TO \$526,450. AVERAGE PAYMENT PER CASE DECREASED BY \$7.50 (2.06%) TO \$355.95. PAYMENT PER RECIPIENT INCREASED BY \$0.54 (0.55%) TO \$98.70.

COMPARING TO JANUARY 2008, JANUARY 2009 CASES INCREASED BY 663 (81.25%). RECIPIENTS INCREASED BY 2,292 (75.35%). TOTAL PAYMENTS INCREASED BY \$241,911 (85.02%). THE AVERAGE PAYMENT PER CASE INCREASED BY \$7.26 (2.08%). THE AVERAGE PAYMENT PER RECIPIENT INCREASED BY \$5.16 (5.52%).

CASH ASSISTANCE WITH GRANT UNDER \$100 (CA-MOE)

COMPARING TO DECEMBER 2008, JANUARY 2009 CASES INCREASED BY 43 (6.12%) TO 746. RECIPIENTS INCREASED BY 96 (6.60%) TO 1,550. PAYMENTS INCREASED BY \$5,832 (11.59%) TO \$56,171. AVERAGE PAYMENT PER CASE INCREASED BY \$3.69 (5.15%) TO \$75.30. AVERAGE PAYMENT PER RECIPIENT INCREASED BY \$1.62 (4.68%) TO \$36.24.

COMPARING TO JANUARY 2008, JANUARY 2009 CASES INCREASED BY 98 (15.12%). RECIPIENTS INCREASED BY 211 (15.76%). TOTAL PAYMENTS INCREASED BY \$9,828 (21.21%). THE AVERAGE PAYMENT PER CASE INCREASED BY \$3.78 (5.29%). THE AVERAGE PAYMENT PER RECIPIENT INCREASED BY \$1.63 (4.71%).

CASH ASSISTANCE UNEMPLOYED PARENT PROGRAM WITH GRANT UNDER \$100 (CA-UP-MOE) NEW PROGRAM STARTING 7/01

COMPARING TO DECEMBER 2008, JANUARY 2009 CASES INCREASED BY 0 (0.00%) TO 26. RECIPIENTS DECREASED BY 6 (7.41%) TO 75. PAYMENTS INCREASED BY \$50 (3.48%) TO \$1,486. AVERAGE PAYMENT PER CASE INCREASED BY \$1.92 (3.48%) TO \$57.15. PAYMENT PER RECIPIENT INCREASED BY \$2.08 (11.73%) TO \$19.81.

COMPARING TO JANUARY 2008, JANUARY 2009 CASES INCREASED BY 17 (188.89%). RECIPIENTS INCREASED BY 54 (3.76%). TOTAL PAYMENTS INCREASED BY \$1,061 (249.65%). THE AVERAGE PAYMENT PER CASE INCREASED BY \$9.93 (21.03%). THE AVERAGE PAYMENT PER RECIPIENT DECREASED BY \$0.43 (2.12%).

GENERAL ASSISTANCE (GA)

COMPARING TO DECEMBER 2008, JANUARY 2009 CASES INCREASED BY 70 (4.32%) TO 1,691. RECIPIENTS INCREASED BY 70 (4.30%) TO 1,699. PAYMENTS INCREASED BY \$9,305 (3.85%) TO \$250,778. AVERAGE PAYMENT PER CASE DECREASED BY \$0.67 (0.45%) TO \$148.30. AVERAGE PAYMENT PER RECIPIENT DECREASED BY \$0.63 (0.43%) TO \$147.60.

COMPARING TO JANUARY 2008, JANUARY 2009 CASES INCREASED BY 322 (23.52%). RECIPIENTS INCREASED BY 326 (23.74%). TOTAL PAYMENTS INCREASED BY \$43,887 (21.21%). THE AVERAGE PAYMENT PER CASE DECREASED BY \$2.83 (1.87%). THE AVERAGE PAYMENT PER RECIPIENT DECREASED BY \$3.09 (2.05%).

TUBERCULOSIS CONTROL PROGRAM (TC)

COMPARING TO DECEMBER 2008, JANUARY 2009 CASES INCREASED BY 2 (40.00%) TO 7. RECIPIENTS INCREASED BY 2 (40.00%) TO 7. PAYMENTS INCREASED BY \$235 (35.07%) TO \$905. AVERAGE PAYMENT PER CASE DECREASED BY \$4.71 (3.51%) TO \$129.29. AVERAGE PAYMENT PER RECIPIENT DECREASED BY \$4.71 (3.51%) TO \$129.29.

COMPARING TO JANUARY 2008, JANUARY 2009 CASES DECREASED BY 5 (41.67%). RECIPIENTS DECREASED BY 5 (41.67%). TOTAL PAYMENTS DECREASED BY \$167 (15.58%). THE AVERAGE PAYMENT PER CASE INCREASED BY \$39.96 (44.73%). THE AVERAGE PAYMENT PER RECIPIENT INCREASED BY \$39.96 (44.73%).

SUPPLEMENTAL NUTRITION ASSISTANCE PROGRAM (SNAP)

COMPARING TO DECEMBER 2008, JANUARY 2009 SUPPLEMENTAL NUTRITION ASSISTANCE HOUSEHOLDS INCREASED BY 7,458 (2.42%) TO 315,732. PERSONS RECEIVING SUPPLEMENTAL NUTRITION ASSISTANCE INCREASED BY 14,024 (1.89%) TO 756,960. TOTAL COUPON ISSUANCE INCREASED BY \$1,579,572 (1.90%) TO \$84,931,899. THE AVERAGE HOUSEHOLD ALLOTMENT DECREASED BY \$1.38 (0.51%) TO \$269.00. THE AVERAGE ALLOTMENT PER PERSON INCREASED BY \$0.01 (0.01%) TO \$112.20.

COMPARING TO JANUARY 2008, JANUARY 2009 SUPPLEMENTAL NUTRITION ASSISTANCE HOUSEHOLDS INCREASED BY 67,705 (27.30%). PERSONS RECEIVING SUPPLEMENTAL NUTRITION ASSISTANCE INCREASED BY 154,953 (25.74%). TOTAL COUPON ISSUANCE INCREASED BY \$23,869,528 (39.09%). THE AVERAGE ALLOTMENT PER HOUSEHOLD INCREASED BY \$22.81 (9.26%). THE AVERAGE ALLOTMENT PER PERSON INCREASED BY \$10.77 (10.62%).

MEDICAL ASSISTANCE PROGRAM (MA) NEW TABLE INCLUDES PROP. 204 CATEGORIES

COMPARING TO DECEMBER 2008, JANUARY 2009 TOTAL RECIPIENTS TOTAL RECIPIENTS INCREASED BY 21,308 (2.12%). SOBRA WOMEN AT 140% FPL INCREASED BY 215 (1.89%). SOBRA CHILDREN INCREASED BY 1,264 (1.96%). ADULTS W/O CHILD AT 100% INCREASED BY 1,593 (3.83%). FOSTER CARE INCREASED BY 49 (0.45%). 1931 AT 36% FPL INCREASED BY 5,422 (1.84%). EMERGENCY SERVICES INCREASED BY 1,770 (2.10%). INFANTS INCREASED BY 28 (0.06%). ADULT W/O CHILD AT 140% INCREASED BY 3,178 (3.00%). MEDICAL W/SPEND DOWN INCREASED BY 203 (3.64%). SOBRA WOMAN AT 100% INCREASED BY 97 (2.77%). SOBRA CHILD AT 100% INCREASED BY 4,250 (2.39%). TRANSITIONAL MEDICAL INCREASED BY 163 (0.37%). 1931 AT 100% INCREASED BY 2,536 (2.93%). YATI INCREASED BY 19 (7.09%). ALL OTHER CATEGORIES INCREASED BY 521 (2.04%).

COMPARING TO JANUARY 2008, JANUARY 2009 TOTAL RECIPIENTS TOTAL RECIPIENTS INCREASED BY 104,973 (11.39%). SOBRA WOMEN AT 140% FPL INCREASED BY 68 (0.59%). SOBRA CHILDREN INCREASED BY 3,973 (6.42%). ADULTS W/O CHILD AT 100% INCREASED BY 5,085 (13.36%). FOSTER CARE INCREASED BY 1,271 (13.05%). 1931 AT 36% FPL INCREASED BY 40,722 (15.72%). EMERGENCY SERVICES INCREASED BY 873 (1.03%). INFANTS DECREASED BY 1,294 (2.57%). ADULT W/O CHILD AT 140% INCREASED BY 17,343 (18.89%). MEDICAL W/SPEND DOWN INCREASED BY 514 (9.77%). SOBRA WOMAN AT 100% INCREASED BY 398 (12.42%). SOBRA CHILD AT 100% INCREASED BY 21,192 (13.16%). TRANSITIONAL MEDICAL DECREASED BY 1,039 (2.32%). 1931 AT 100% INCREASED BY 12,399 (16.16%). YATI INCREASED BY 43 (17.62%). ALL OTHER CATEGORIES INCREASED BY 3,425 (15.15%).

# TANF SUMMARY

## TABLES 1, 1A, 1B, & 1C: ARIZONA 1

	JANUARY 2009							CHANGE FROM			JANUARY 2008		
	FAMILIES (CASES)	PERSONS (RECIP.)	ADULTS	CHILDREN	TOTAL PAYMENTS	AVERAGE	AVERAGE	FAMILIES (CASES)	PERSONS (RECIP.)	TOTAL PAYMENTS	FAMILIES (CASES)	PERSONS (RECIP.)	TOTAL PAYMENTS
						PAYMENT/ CASE	PAYMENT/ RECIP.						
ARIZONA	39,567	86,857	21,716	65,141	10,441,050	263.88	120.21	172	442	(8,003)	2,227	5,783	563,343
DISTRICT I													
MARICOPA	23,141	51,602	12,121	39,481	6,168,764	266.57	119.55	251	642	45,702	2,477	6,159	660,716
DISTRICT II													
PIMA	6,924	14,445	3,821	10,624	1,795,119	259.26	124.27	(49)	(158)	(30,763)	(54)	(185)	(34,614)
DISTRICT III													
APACHE	71	144	40	104	17,409	245.20	120.90	(5)	(22)	(2,565)	(36)	(87)	(9,729)
COCONINO	265	573	145	428	64,243	242.43	112.12	10	24	2,039	4	23	999
NAVAJO	1,365	3,416	1,008	2,408	380,800	278.97	111.48	(4)	39	(2,584)	(38)	(77)	(7,465)
YAVAPAI	734	1,465	337	1,128	181,997	247.95	124.23	(1)	14	(32)	30	106	6,361
DISTRICT IV													
LA PAZ	207	441	142	299	51,979	251.11	117.87	2	2	(680)	(33)	(77)	(8,258)
MOHAVE	1,387	2,968	884	2,084	356,925	257.34	120.26	(2)	(31)	(4,564)	(34)	(4)	(11,294)
YUMA	1,085	2,352	533	1,819	280,496	258.52	119.26	(46)	(161)	(17,558)	(67)	(163)	(22,028)
DISTRICT V													
GILA	729	1,549	556	993	189,677	260.19	122.45	(18)	(29)	(5,141)	(20)	(33)	(7,016)
PINAL	2,014	4,507	1,221	3,286	526,670	261.50	116.86	58	168	16,100	70	158	9,284
DISTRICT VI													
COCHISE	968	1,958	513	1,445	251,170	259.47	128.28	(12)	(36)	(5,478)	(56)	(75)	(10,859)
GRAHAM	347	703	221	482	87,942	253.44	125.10	(1)	6	1,031	(33)	(20)	(6,341)
GREENLEE	32	67	17	50	8,641	270.03	128.97	(4)	(1)	(331)	(20)	(48)	(5,400)
SANTA CRUZ	298	667	157	510	79,218	265.83	118.77	(7)	(15)	(3,179)	37	106	8,987

1/EXCLUDES: PRIOR MONTH NET TOTALS OF 2,077 CASES; 5,091 RECIPIENTS; \$452,689.  
 1/GRANT DIVERSION TOTALS OF: 234 CASES; \$250,160.  
 ZERO PAY TOTALS OF 732 CASES; 2,393 RECIPIENTS.

	CURRENT MO. CASES	CURRENT MO. RECIP.	CURRENT MO. DOLLARS	PRIOR MO. CASES	PRIOR MO. RECIP.	PRIOR MO. DOLLARS
PASQUAYAOUI	330	963	\$101,842	16	51	5,747
WM APACHE	718	1,973	\$216,899	10	30	1,850
SALT RIVER	82	292	\$25,717	5	24	960
SAN CARLOS	673	1,466	\$178,500	8	16	963
HOPAI	131	372	\$30,322	6	20	830
<b>TOTAL</b>	<b>1,934</b>	<b>5,066</b>	<b>\$553,280</b>	<b>45</b>	<b>141</b>	<b>\$10,350</b>

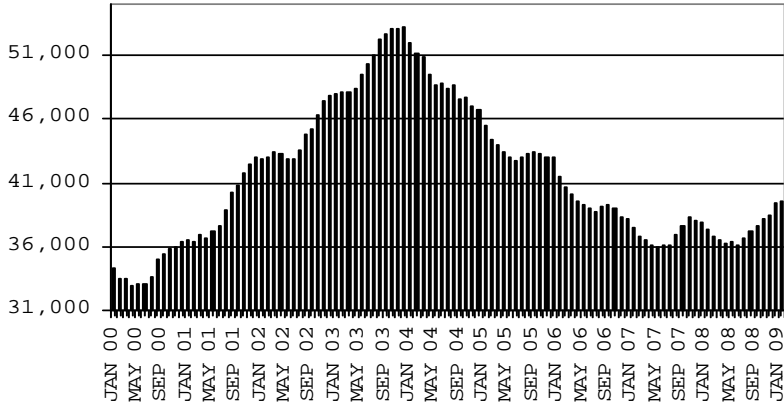
# TANF SUMMARY

TABLES 1, 1A, 1B, & 1C

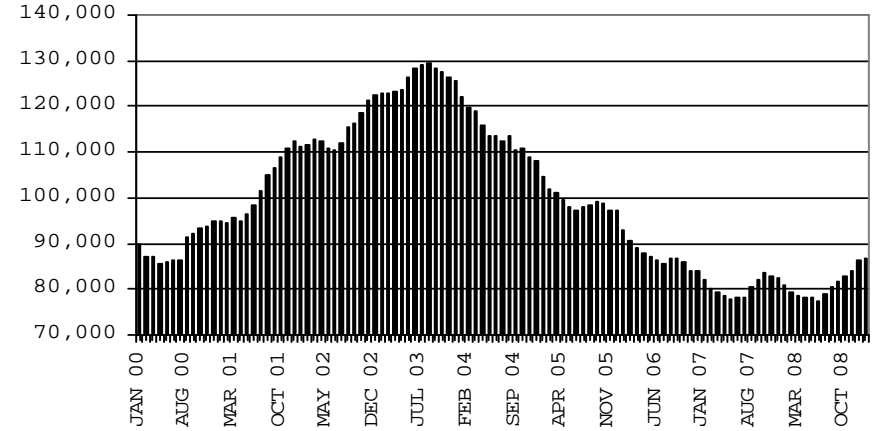
## COMPARISON OF CASES, RECIPIENTS, PAYMENTS & AVERAGE PAYMENTS

FOR 2000, 2001, 2002, 2003, 2004, 2005, 2006, 2007, & 2008

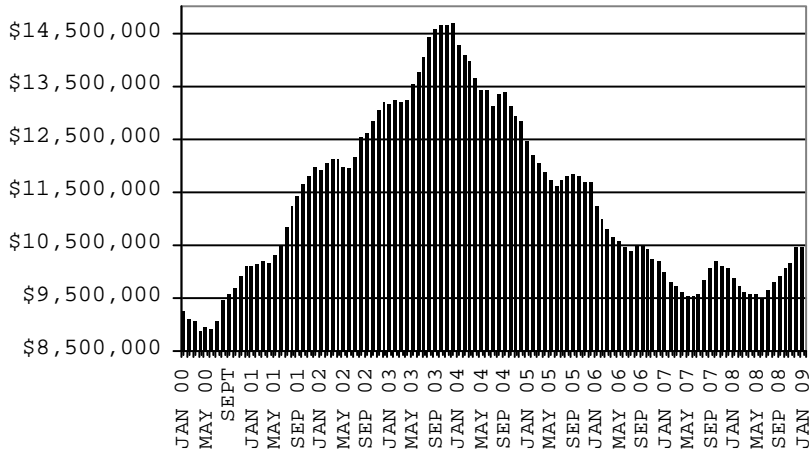
### CASES



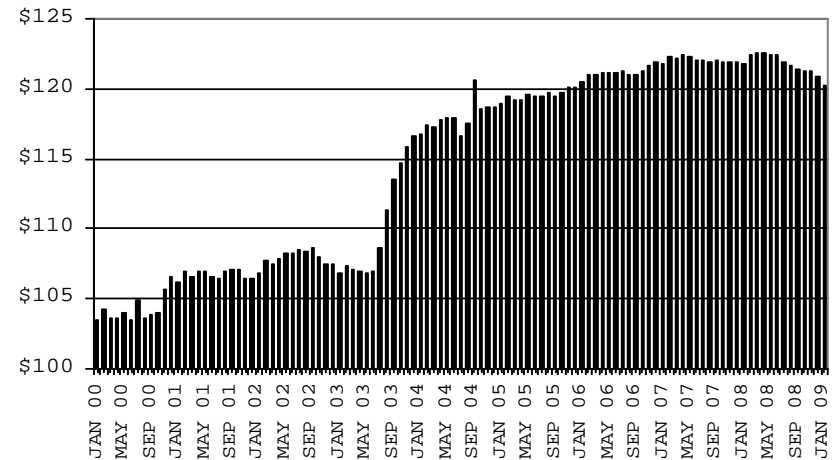
### RECIPIENTS



### PAYMENTS



### AVERAGE PAYMENTS PER RECIPIENT



**TABLE 1**  
**CASH ASSISTANCE: ARIZONA 1.**

	JANUARY 2009							CHANGE FROM					
								DECEMBER 2008			JANUARY 2008		
	FAMILIES (CASES)	(RECIP.)	ADULTS	CHILDREN	TOTAL PAYMENTS	AVERAGE PAYMENT/ CASE	AVERAGE PAYMENT/ RECIP.	FAMILIES (CASES)	PERSONS (RECIP.)	TOTAL PAYMENTS	FAMILIES (CASES)	PERSONS (RECIP.)	TOTAL PAYMENTS
ARIZONA	37,316	79,898	19,158	60,740	9,856,943	264.15	123.37	70	276	(24,229)	1,449	3,226	310,543
DISTRICT I													
MARICOPA	21,821	47,556	10,800	36,756	5,823,942	266.90	122.46	193	533	32,635	1,867	4,160	466,171
DISTRICT II													
PIMA	6,531	13,217	3,308	9,909	1,691,815	259.04	128.00	(81)	(228)	(37,091)	(157)	(564)	(74,249)
DISTRICT III													
APACHE	65	130	32	98	16,565	254.85	127.42	(2)	(3)	(938)	(29)	(69)	(8,976)
COCONINO	250	525	127	398	60,616	242.46	115.46	11	28	1,315	(4)	(10)	(1,941)
NAVAJO	1,272	3,073	854	2,219	350,226	275.33	113.97	(4)	65	(190)	(36)	(61)	(7,228)
YAVAPAI	685	1,347	292	1,055	172,677	252.08	128.19	(6)	6	(481)	5	47	1,838
DISTRICT IV													
LA PAZ	190	388	117	271	48,274	254.07	124.42	3	6	192	(28)	(65)	(7,503)
MOHAVE	1,288	2,665	752	1,913	333,786	259.15	125.25	(4)	(25)	(2,512)	(65)	(93)	(17,973)
YUMA	1,044	2,230	491	1,739	271,613	260.17	121.80	(33)	(117)	(13,344)	(63)	(142)	(21,031)
DISTRICT V													
GILA	715	1,508	540	968	187,168	261.77	124.12	(21)	(36)	(5,214)	15	82	4,366
PINAL	1,880	4,064	1,018	3,046	489,012	260.11	120.33	42	105	9,291	15	(3)	(7,266)
DISTRICT VI													
COCHISE	923	1,832	462	1,370	240,801	260.89	131.44	(11)	(31)	(4,274)	(60)	(93)	(13,144)
GRAHAM	335	665	203	462	84,691	252.81	127.35	(3)	(6)	(463)	(22)	(4)	(5,392)
GREENLEE	31	63	15	48	8,223	265.26	130.52	(4)	(1)	(331)	(19)	(46)	(5,447)
SANTA CRUZ	286	635	147	488	77,534	271.10	122.10	(10)	(20)	(2,824)	30	87	8,318

1/EXCLUDES: PRIOR MONTH NET TOTALS OF: 1,188 CASES; 2,930 RECIPIENTS; \$338,270.  
GRANT DIVERSION TOTALS OF: 234 CASES; \$250,160  
ZERO PAY TOTALS OF 665 CASES; 2,110 RECIPIENTS.

	CURRENT MO. CASES	CURRENT MO. RECIP.	CURRENT MO. DOLLARS	PRIOR MO. CASES	PRIOR MO. RECIP	PRIOR MO. DOLLARS
PASQUAYUQUI	309	880	94,334	14	43	4,992
WM APACHE	671	1,773	198,921	9	26	1,716
SALT RIVER	82	292	25,717	5	24	960
SAN CARLOS	673	1,466	178,500	8	16	963
HOPAI	131	372	30,322	6	20	830
<b>TOTAL</b>	<b>1,866</b>	<b>4,783</b>	<b>527,794</b>	<b>42</b>	<b>129</b>	<b>9,461</b>

CASES WITH GRANT UNDER \$100 (SEE TABLE 1B).

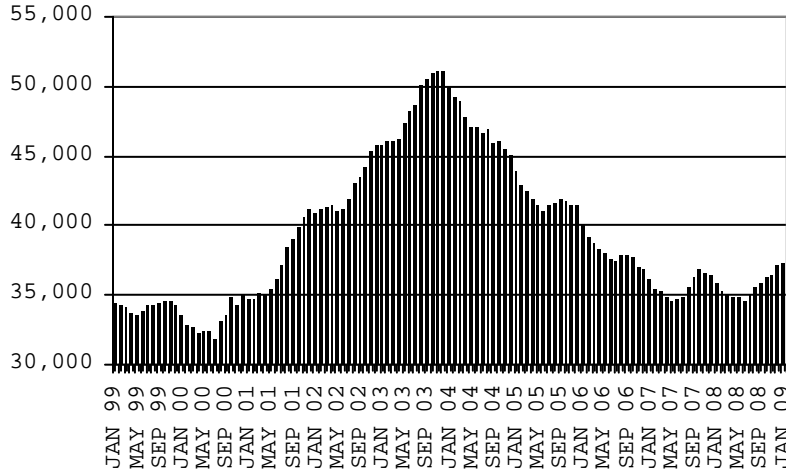
# CHART 1

## CASH ASSISTANCE PROGRAM

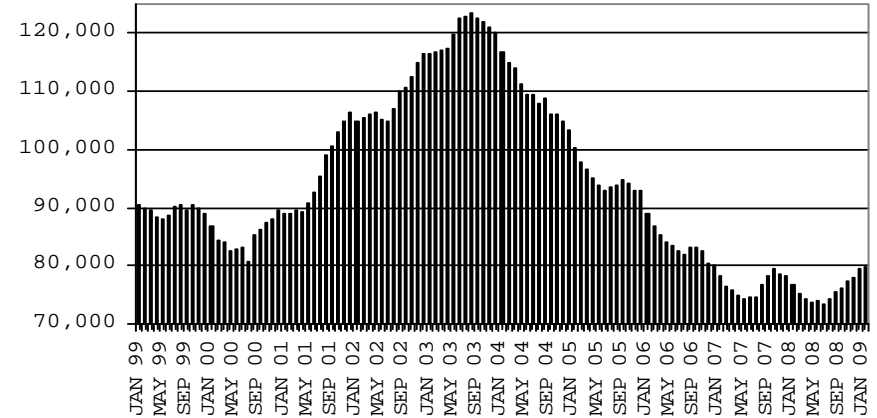
### COMPARISON OF CASES, RECIPIENTS, PAYMENTS & AVERAGE PAYMENTS

FOR 1999, 2000, 2001, 2002, 2003, 2004, 2005, 2006, 2007, & 2008

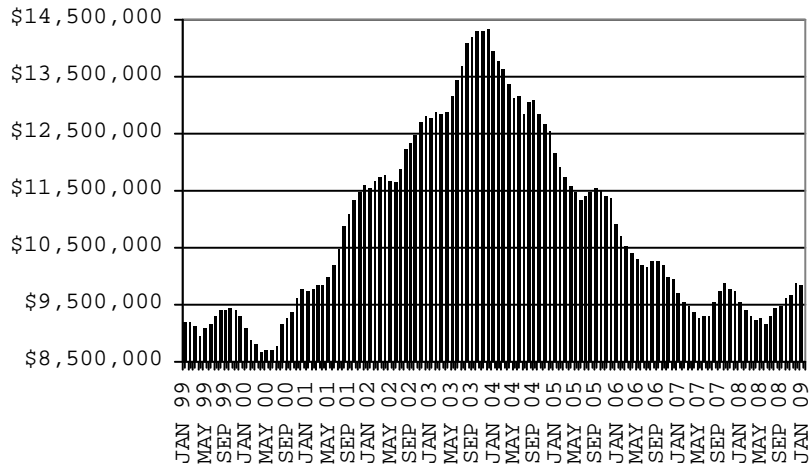
**CASES**



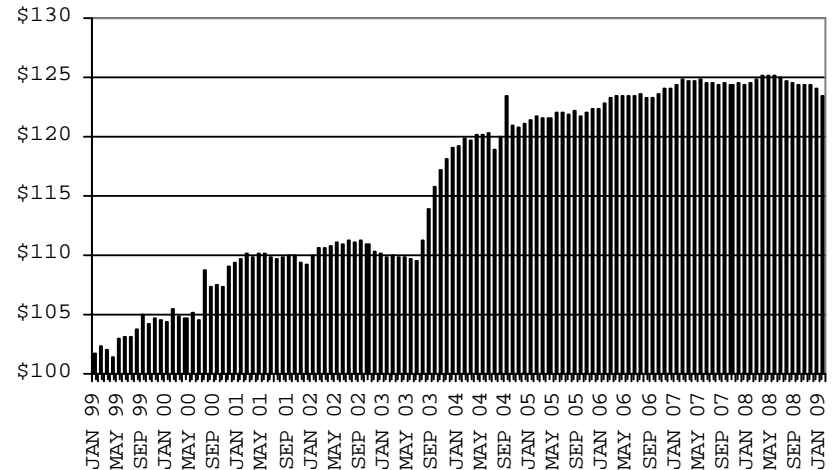
**RECIPIENTS**



**PAYMENTS**



**AVERAGE PAYMENTS PER RECIPIENT**



**TABLE 1A  
CA-UP**

**CASH ASSISTANCE UNEMPLOYED PARENT PROGRAM: ARIZONA 1**

	JANUARY 2009							CHANGE FROM			JANUARY 2008		
	FAMILIES (CASES)	PERSONS (RECIP.)	ADULTS	CHILDREN	TOTAL PAYMENTS	AVERAGE PAYMENT/ CASE	AVERAGE PAYMENT/ RECIP.	FAMILIES (CASES)	PERSONS (RECIP.)	TOTAL PAYMENTS	FAMILIES (CASES)	PERSONS (RECIP.)	TOTAL PAYMENTS
ARIZONA	1,479	5,334	2,132	3,202	526,450	355.95	98.70	59	76	10,344	663	2,292	241,911
DISTRICT I													
MARICOPA	876	3,094	1,096	1,998	312,904	357.20	101.13	39	58	9,293	512	1,766	185,415
DISTRICT II													
PIMA	258	961	431	530	92,618	358.98	96.38	16	43	4,138	105	391	39,642
DISTRICT III													
APACHE	3	10	6	4	700	233.33	70.00	(2)	(14)	(1,494)	(1)	(5)	(322)
COCONINO	9	34	14	20	3,183	353.67	93.62	2	5	1,054	8	31	2,836
NAVAJO	80	322	149	173	29,750	371.88	92.39	(2)	(25)	(2,285)	(1)	(9)	(146)
YAVAPAI	25	75	32	43	7,628	305.12	101.71	1	(1)	327	14	38	4,039
DISTRICT IV													
LA PAZ	10	38	18	20	3,186	318.60	83.84	1	0	(590)	(2)	(7)	(546)
MOHAVE	52	200	100	100	19,427	373.60	97.14	(9)	(31)	(2,849)	9	38	4,967
YUMA	20	73	30	43	7,176	358.80	98.30	(10)	(38)	(3,948)	(3)	(19)	(1,001)
DISTRICT V													
GILA	6	21	10	11	2,037	339.50	97.00	2	2	151	(32)	(113)	(11,063)
PINAL	101	373	183	190	34,643	343.00	92.88	20	77	6,640	47	158	15,674
DISTRICT VI													
COCHISE	27	89	41	48	8,861	328.19	99.56	0	(5)	(849)	9	26	2,754
GRAHAM	8	29	16	13	2,980	372.50	102.76	3	13	1,516	(3)	(7)	(512)
GREENLEE	1	4	2	2	418	418.00	104.50	0	0	0	0	1	71
SANTA CRUZ	3	11	4	7	939	313.00	85.36	(2)	(8)	(760)	1	3	103

1/EXCLUDES: PRIOR MONTH NET TOTALS OF: 185 CASES; 678 RECIPIENTS; \$67,671.  
GRANT DIVERSION TOTALS OF: 0 CASES; \$0.  
ZERO PAY TOTALS OF 67 CASES; 283 RECIPIENTS.

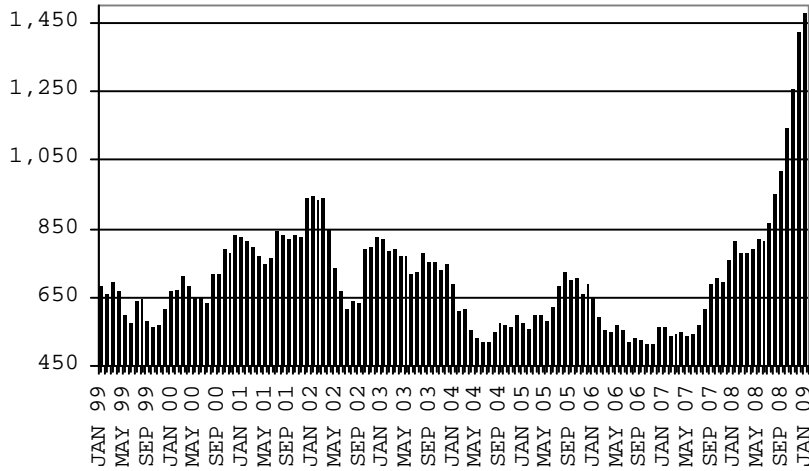
	CURRENT MO. CASES	CURRENT MO. RECIP.	CURRENT MO. DOLLARS	PRIOR MO. CASES	PRIOR MO. RECIP.	PRIOR MO. DOLLARS
PASQUA/YAQUI	21	83	7,508	2	8	755
WM APACHE	47	200	17,978	1	4	134
SALT RIVER	0	0	0	0	0	0
SAN CARLOS	0	0	0	0	0	0
HOPi	0	0	0	0	0	0
<b>TOTAL</b>	<b>68</b>	<b>283</b>	<b>25,486</b>	<b>3</b>	<b>12</b>	<b>889</b>

CASES WITH GRANT UNDER \$100 (SEE TABLE 1C).

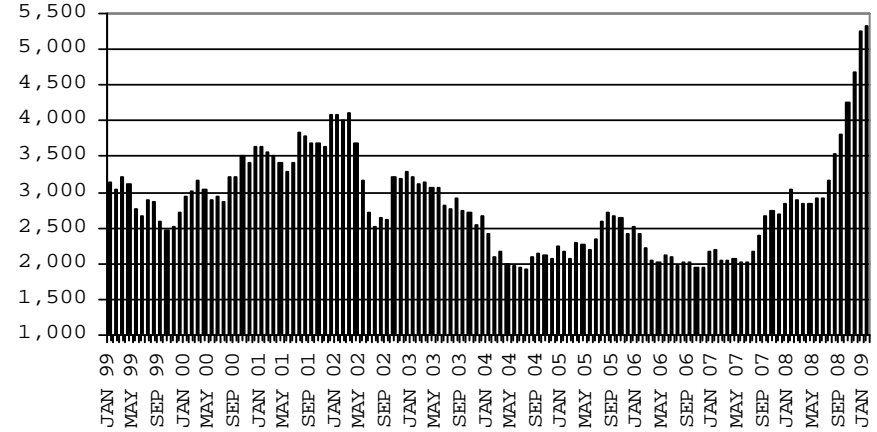
# CHART 1A

## CASH ASSISTANCE UNEMPLOYED PARENT PROGRAM COMPARISON OF CASES, RECIPIENTS, PAYMENTS & AVERAGE PAYMENTS FOR 1999, 2000, 2001, 2002, 2003, 2004, 2005, 2006, 2007, & 2008

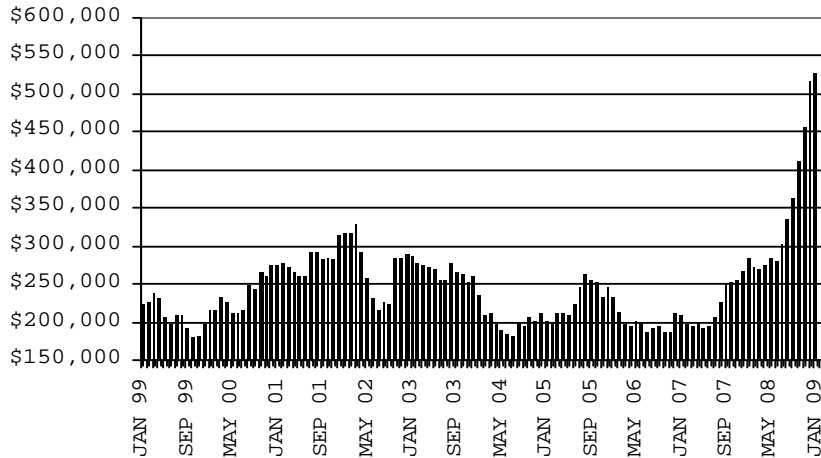
### CASES



### RECIPIENTS



### PAYMENTS



### AVERAGE PAYMENTS PER RECIPIENT

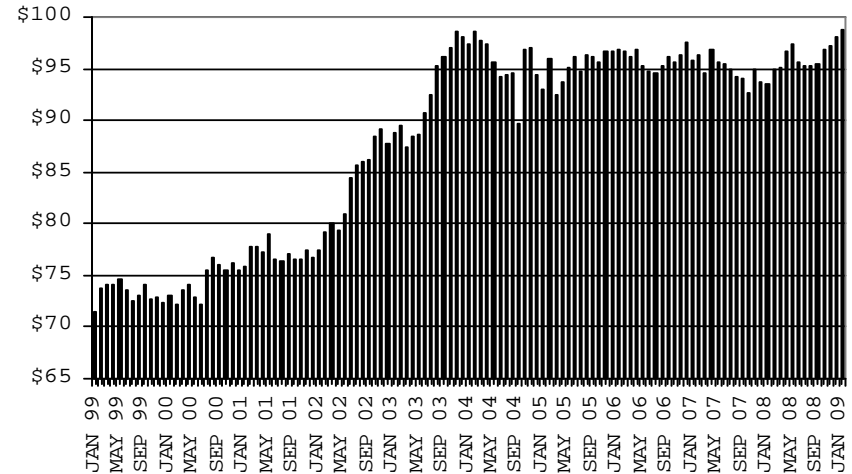




TABLE 1B 1/

CASH ASSISTANCE: ARIZONA  
 CASES WITH GRANT UNDER \$100

	CHANGE FROM												
	JANUARY 2009							DECEMBER 2008			JANUARY 2008		
	FAMILIES (CASES)	PERSONS (RECIP.)	ADULTS	CHILDREN	TOTAL PAYMENTS	AVERAGE PAYMENT/ CASE	AVERAGE PAYMENT/ RECIP.	FAMILIES (CASES)	PERSONS (RECIP.)	TOTAL PAYMENTS	FAMILIES (CASES)	PERSONS (RECIP.)	TOTAL PAYMENTS
ARIZONA	746	1,550	399	1,151	56,171	75.30	36.24	43	96	5,832	98	211	9,828
DISTRICT I													
MARICOPA	430	916	215	701	31,108	72.34	33.96	23	71	3,958	89	208	8,557
DISTRICT II													
PIMA	129	247	75	172	10,426	80.82	42.21	15	24	2,135	(7)	(28)	(222)
DISTRICT III													
APACHE	3	4	2	2	144	48.00	36.00	(1)	(5)	(133)	(6)	(13)	(431)
COCONINO	6	14	4	10	444	74.00	31.71	(3)	(9)	(330)	0	2	104
NAVAJO	13	21	5	16	824	63.38	39.24	2	(1)	(109)	(1)	(7)	(91)
YAVAPAI	24	43	13	30	1,692	70.50	39.35	5	10	219	12	24	559
DISTRICT IV													
LA PAZ	7	15	7	8	519	74.14	34.60	(2)	(4)	(282)	(3)	(5)	(209)
MOHAVE	44	93	26	67	3,497	79.48	37.60	10	22	722	19	41	1,497
YUMA	21	49	12	37	1,707	81.29	34.84	(3)	(6)	(266)	0	(1)	20
DISTRICT V													
GILA	8	20	6	14	472	59.00	23.60	1	5	(78)	(2)	0	(267)
PINAL	30	61	16	45	2,814	93.80	46.13	(7)	(23)	(32)	5	(6)	675
DISTRICT VI													
COCHISE	18	37	10	27	1,508	83.78	40.76	(1)	0	(355)	(5)	(8)	(469)
GRAHAM	4	9	2	7	271	67.75	30.11	(1)	(1)	(22)	(8)	(9)	(437)
GREENLEE	0	0	0	0	0	0.00	0.00	0	0	0	(1)	(3)	(24)
SANTA CRUZ	9	21	6	15	745	82.78	35.48	5	13	405	6	16	566

EXCLUDES: PRIOR MONTH NET TOTALS OF 661 CASES; 1,358 RECIPIENTS; \$44,275.

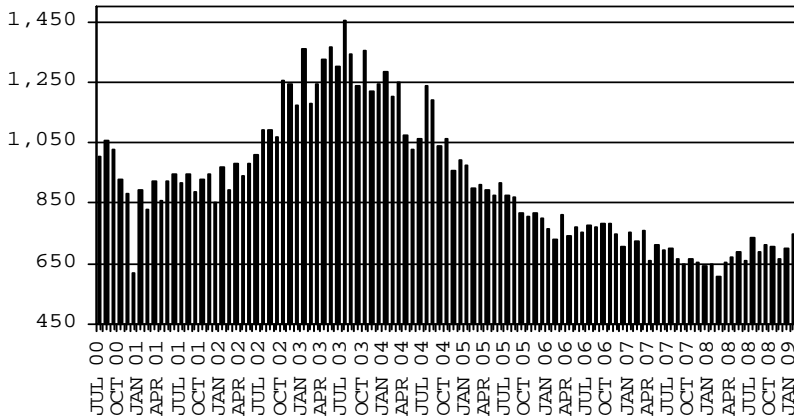
# CHART 1B

## CASH ASSISTANCE PROGRAM CASES WITH GRANT UNDER \$100

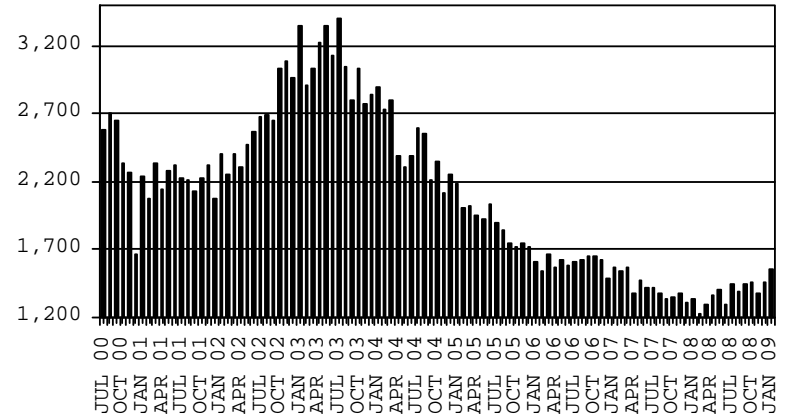
### COMPARISON OF CASES, RECIPIENTS, PAYMENTS & AVERAGE PAYMENTS

FOR 2000, 2001, 2002, 2003, 2004, 2005, 2006, 2007, & 2008

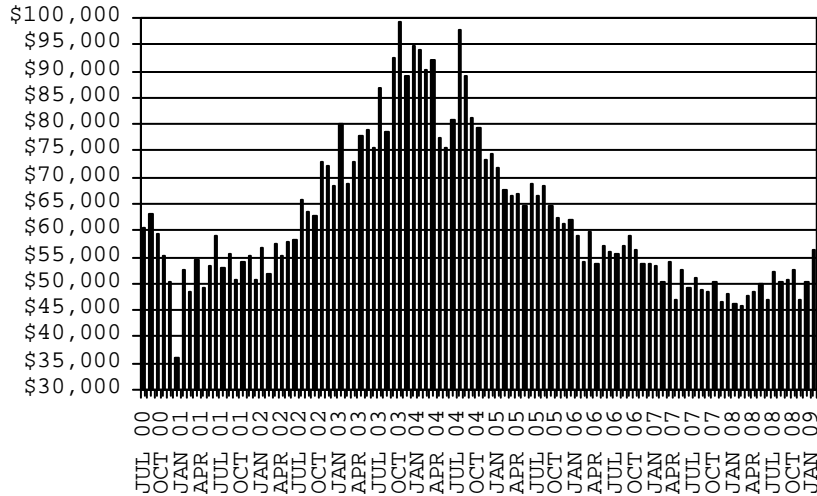
**CASES**



**RECIPIENTS**



**PAYMENTS**



**AVERAGE PAYMENTS PER RECIPIENT**

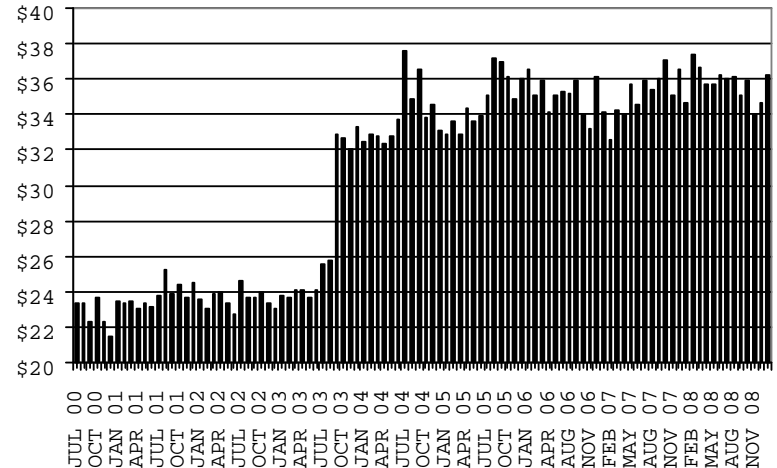


TABLE 1C 1/

CASH ASSISTANCE UNEMPLOYED PARENT PROGRAM: ARIZONA  
CASES WITH GRANT UNDER \$100

	JANUARY 2009							CHANGE FROM					
								DECEMBER 2008			JANUARY 2008		
	FAMILIES (CASES)	PERSONS (RECIP.)	ADULTS	CHILDREN	TOTAL PAYMENTS	AVERAGE PAYMENT/ CASE	AVERAGE PAYMENT/ RECIP.	FAMILIES (CASES)	PERSONS (RECIP.)	TOTAL PAYMENTS	FAMILIES (CASES)	PERSONS (RECIP.)	TOTAL PAYMENTS
ARIZONA	26	75	27	48	1,486	57.15	19.81	0	(6)	50	17	54	1,061
DISTRICT I													
MARICOPA	14	36	10	26	810	57.86	22.50	(4)	(20)	(184)	9	25	573
DISTRICT II													
PIMA	6	20	7	13	260	43.33	13.00	1	3	55	5	16	215
DISTRICT III													
APACHE	0	0	0	0	0	0.00	0.00	0	0	0	0	0	0
COCONINO	0	0	0	0	0	0.00	0.00	0	0	0	0	0	0
NAVAJO	0	0	0	0	0	0.00	0.00	0	0	0	0	0	0
YAVAPAI	0	0	0	0	0	0.00	0.00	(1)	(1)	(97)	(1)	(3)	(75)
DISTRICT IV													
LA PAZ	0	0	0	0	0	0.00	0.00	0	0	0	0	0	0
MOHAVE	3	10	6	4	215	71.67	21.50	1	3	75	3	10	215
YUMA	0	0	0	0	0	0.00	0.00	0	0	0	(1)	(1)	(16)
DISTRICT V													
GILA	0	0	0	0	0	0.00	0.00	0	0	0	(1)	(2)	(52)
PINAL	3	9	4	5	201	67.00	22.33	3	9	201	3	9	201
DISTRICT VI													
COCHISE	0	0	0	0	0	0.00	0.00	0	0	0	0	0	0
GRAHAM	0	0	0	0	0	0.00	0.00	0	0	0	0	0	0
GREENLEE	0	0	0	0	0	0.00	0.00	0	0	0	0	0	0
SANTA CRUZ	0	0	0	0	0	0.00	0.00	0	0	0	0	0	0

EXCLUDES: PRIOR MONTH NET TOTALS OF 43 CASES; 125 RECIPIENTS; \$2,473.

# CHART 1C

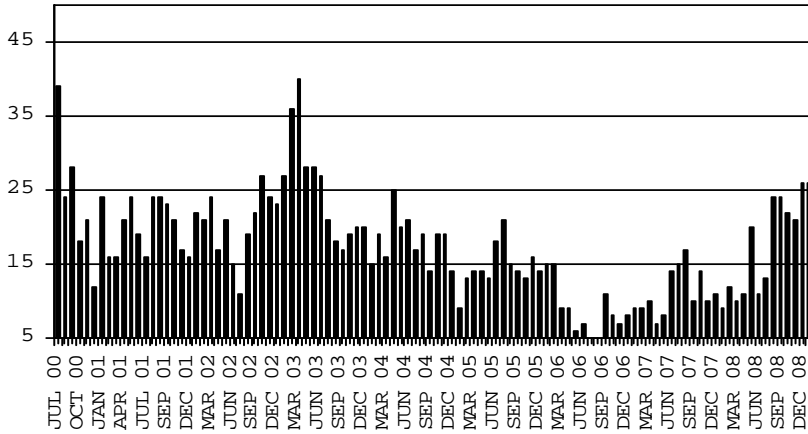
## CASH ASSISTANCE UNEMPLOYED PARENT PROGRAM

### CASES WITH GRANT UNDER \$100

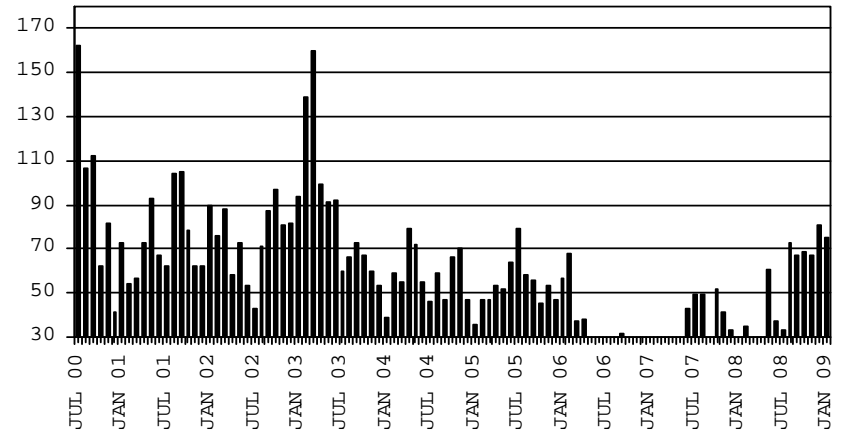
#### COMPARISON OF CASES, RECIPIENTS, PAYMENTS & AVERAGE PAYMENTS

FOR 2000, 2001, 2002, 2003, 2004, 2005, 2006, 2007, & 2008

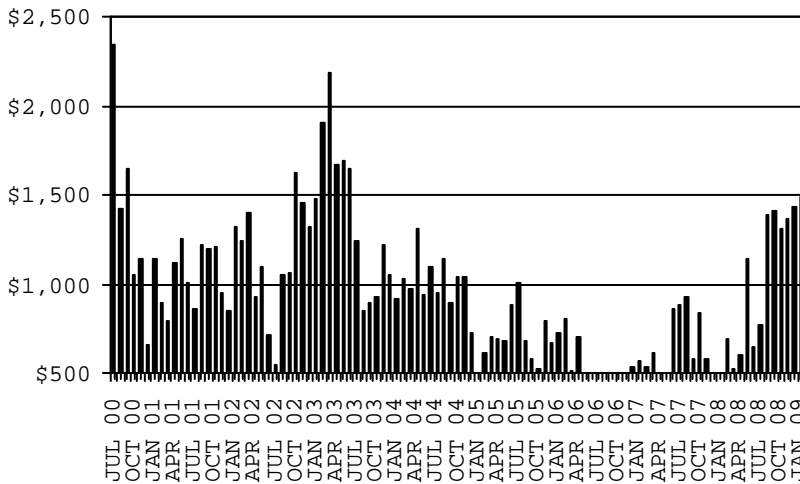
**CASES**



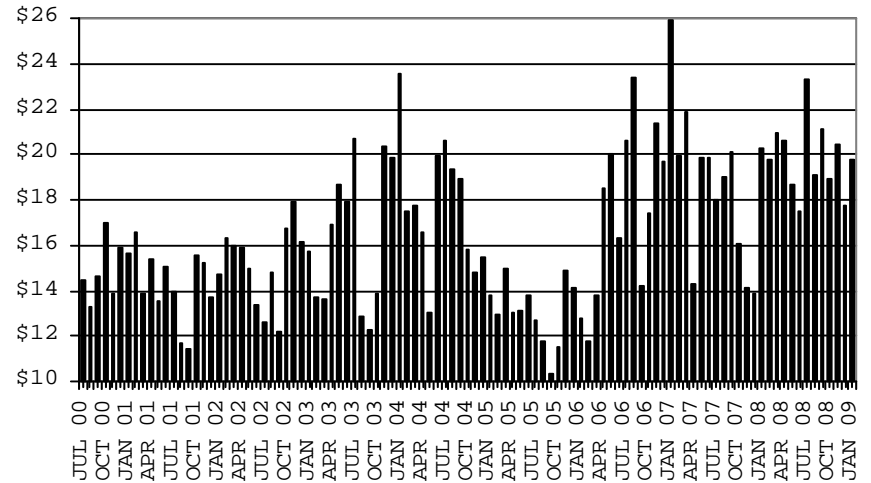
**RECIPIENTS**



**PAYMENTS**



**AVERAGE PAYMENTS PER RECIPIENT**



**TABLE 2**  
**GENERAL ASSISTANCE: ARIZONA 1,**

	CHANGE FROM											
	JANUARY 2009					DECEMBER 2008			JANUARY 2008			
	NUMBER OF CASES	PERSONS (RECIP.)	TOTAL PAYMENTS	AVERAGE PAYMENT/ CASE	AVERAGE PAYMENT/ RECIP.	NUMBER OF CASES	PERSONS (RECIP.)	TOTAL PAYMENTS	NUMBER OF CASES	PERSONS (RECIP.)	TOTAL PAYMENTS	
ARIZONA	1,691	1,699	250,778	148.30	147.60	70	70	9,305	322	326	43,887	
DISTRICT I												
MARICOPA	803	803	117,063	145.78	145.78	67	66	8,879	239	238	31,661	
DISTRICT II												
PIMA	350	355	53,021	151.49	149.35	(19)	(17)	(2,610)	5	10	1,436	
DISTRICT III												
APACHE	6	6	908	151.33	151.33	(2)	(2)	(281)	(4)	(5)	(706)	
COCONINO	21	21	2,775	132.14	132.14	(2)	(2)	(271)	2	2	73	
NAVAJO	53	53	7,182	135.51	135.51	7	6	881	11	11	759	
YAVAPAI	83	84	12,332	148.58	146.81	2	2	172	22	22	2,747	
DISTRICT IV												
LA PAZ	7	7	1,015	145.00	145.00	(1)	(1)	(173)	(6)	(6)	(844)	
MOHAVE	147	148	23,068	156.93	155.86	12	12	1,808	68	68	11,248	
YUMA	52	53	7,040	135.38	132.83	8	8	1,124	20	21	2,470	
DISTRICT V												
GILA	99	99	15,013	151.65	151.65	(1)	(1)	113	(34)	(34)	(5,196)	
PINAL	13	13	1,611	123.92	123.92	0	0	(118)	(17)	(17)	(2,724)	
	86	86	13,402	155.84	155.84	(1)	(1)	231	(17)	(17)	(2,472)	
DISTRICT VI												
COCHISE	70	70	11,361	162.30	162.30	(1)	(1)	(337)	(1)	(1)	239	
GRAHAM	55	55	8,996	163.56	163.56	(1)	(1)	(107)	1	1	589	
GREENLEE	7	7	1,111	158.71	158.71	0	0	(100)	1	1	73	
SANTA CRUZ	1	1	173	173.00	173.00	0	0	0	(3)	(3)	(454)	
	7	7	1,081	154.43	154.43	0	0	(130)	0	0	31	

1/EXCLUDES: PRIOR MONTH NET TOTALS OF : 310 CASES; 311 RECIPIENTS; \$69,243.  
REFUGEE RESETTLEMENT PROGRAM: 636 CASES; 1,016 RECIPIENTS; \$177,602.

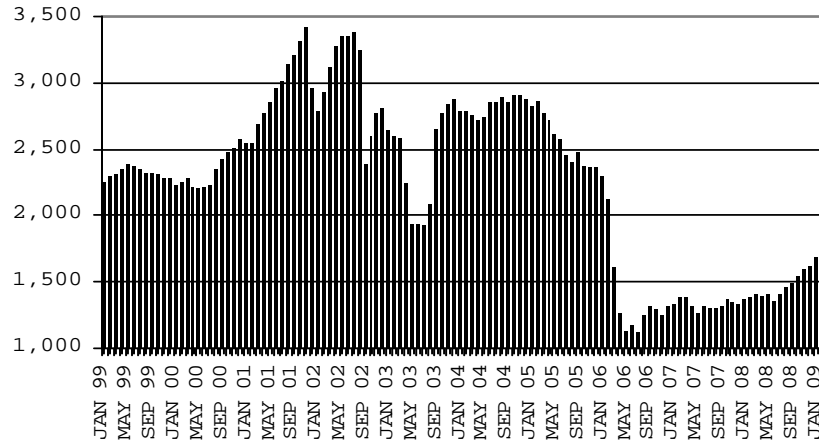
# CHART 2

## GENERAL ASSISTANCE PROGRAM

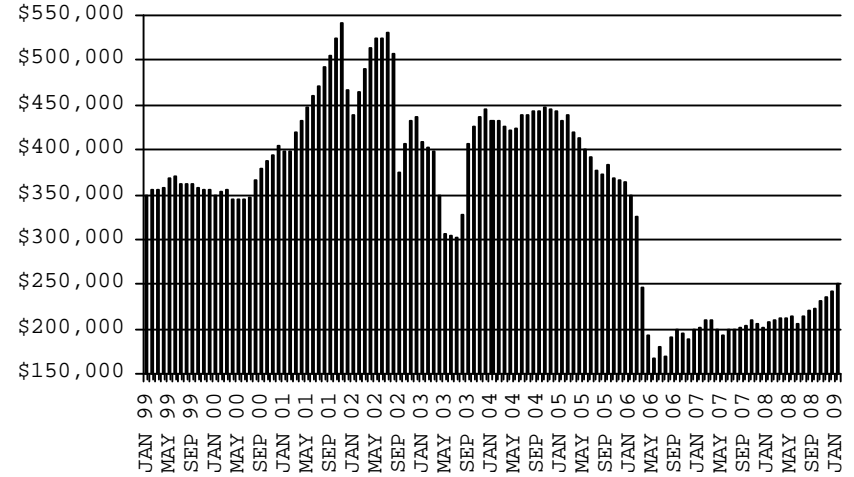
### COMPARISON OF CASES, PAYMENTS & AVERAGE PAYMENTS

FOR 1999, 2000, 2001, 2002, 2003, 2004, 2005, 2006, 2007, & 2008

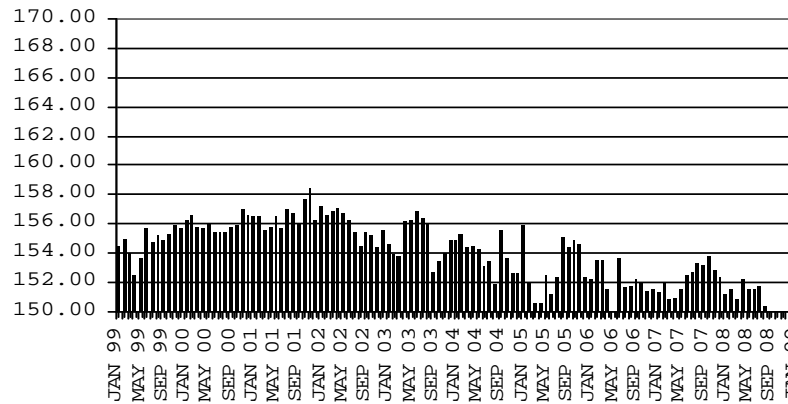
#### CASES



#### PAYMENTS



#### AVERAGE PAYMENT PER CASE



**TABLE 4**

**TUBERCULOSIS CONTROL: ARIZONA 1/**

	CHANGE FROM											
	JANUARY 2009					DECEMBER 2008			JANUARY 2008			
	NUMBER OF CASES	PERSONS (RECIP.)	TOTAL PAYMENTS	AVERAGE PAYMENT/ CASE	AVERAGE PAYMENT/ RECIP.	NUMBER OF CASES	PERSONS (RECIP.)	TOTAL PAYMENTS	NUMBER OF CASES	PERSONS (RECIP.)	TOTAL PAYMENTS	
ARIZONA	7	7	905	129.29	129.29	2	2	235	(5)	(5)	(167)	
DISTRICT I												
MARICOPA	6	6	732	122.00	122.00	1	1	62	(5)	(5)	(232)	
DISTRICT II												
PIMA	0	0	0	0.00	0.00	0	0	0	0	0	0	
DISTRICT III	0	0	0	0	0.00	0	0	0	(1)	(1)	(108)	
APACHE	0	0	0	0.00	0.00	0	0	0	0	0	0	
COCONINO	0	0	0	0.00	0.00	0	0	0	0	0	0	
NAVAJO	0	0	0	0.00	0.00	0	0	0	0	0	0	
YAVAPAI	0	0	0	0.00	0.00	0	0	0	(1)	(1)	(108)	
DISTRICT IV	1	1	173	173.00	173.00	1	1	173	1	1	173	
LA PAZ	0	0	0	0.00	0.00	0	0	0	0	0	0	
MOHAVE	0	0	0	0.00	0.00	0	0	0	0	0	0	
YUMA	1	1	173	173.00	173.00	1	1	173	1	1	173	
DISTRICT V	0	0	0	0.00	0.00	0	0	0	0	0	0	
GILA	0	0	0	0.00	0.00	0	0	0	0	0	0	
PINAL	0	0	0	0.00	0.00	0	0	0	0	0	0	
DISTRICT VI	0	0	0	0.00	0.00	0	0	0	0	0	0	
COCHISE	0	0	0	0.00	0.00	0	0	0	0	0	0	
GRAHAM	0	0	0	0.00	0.00	0	0	0	0	0	0	
GREENLEE	0	0	0	0.00	0.00	0	0	0	0	0	0	
SANTA CRUZ	0	0	0	0.00	0.00	0	0	0	0	0	0	

1/EXCLUDES: PRIOR MONTH NET TOTALS OF : 1 CASES; 1 RECIPIENTS; \$94.

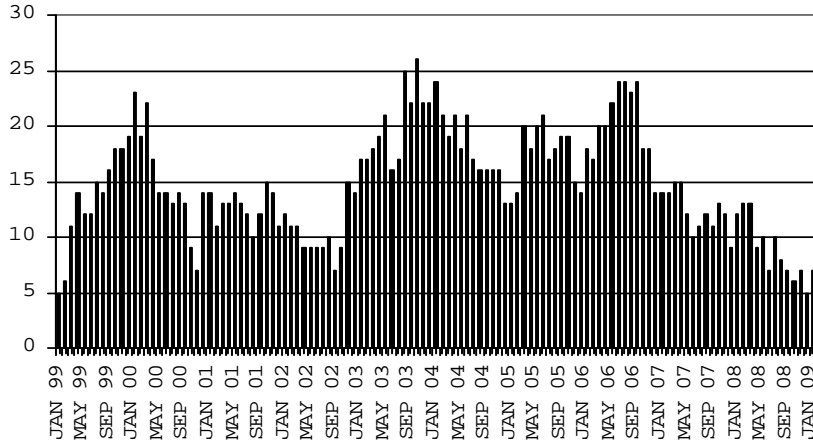
# CHART 4

## TUBERCULOSIS CONTROL PROGRAM

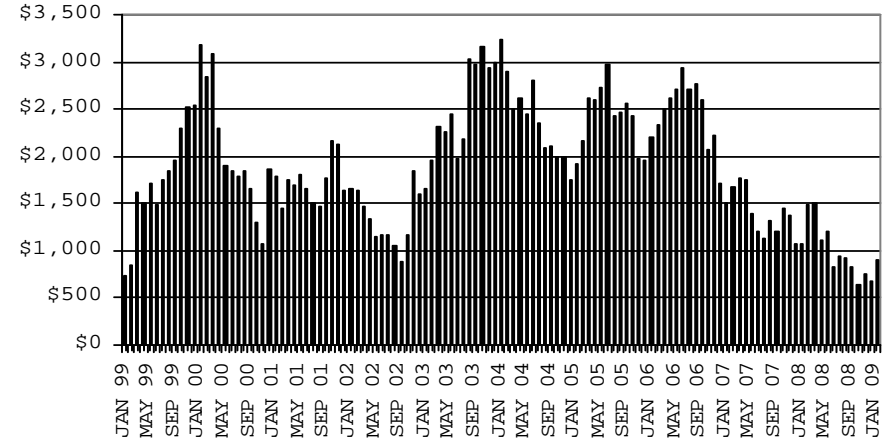
### COMPARISON OF CASES, PAYMENTS & AVERAGE PAYMENTS

FOR 1999, 2000, 2001, 2002, 2003, 2004, 2005, 2006, 2007, & 2008

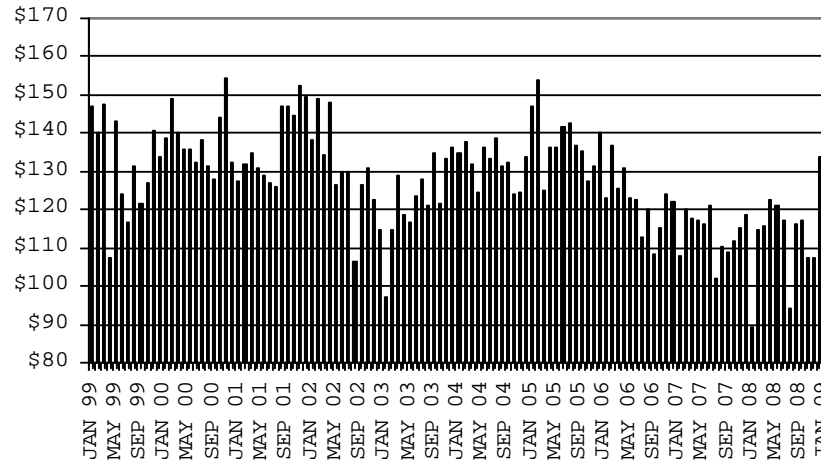
#### CASES



#### PAYMENTS



#### AVERAGE PAYMENT PER CASE





**TABLE 6**

**SUPPLEMENTAL NUTRITION ASSISTANCE PROGRAM: ARIZONA 1**

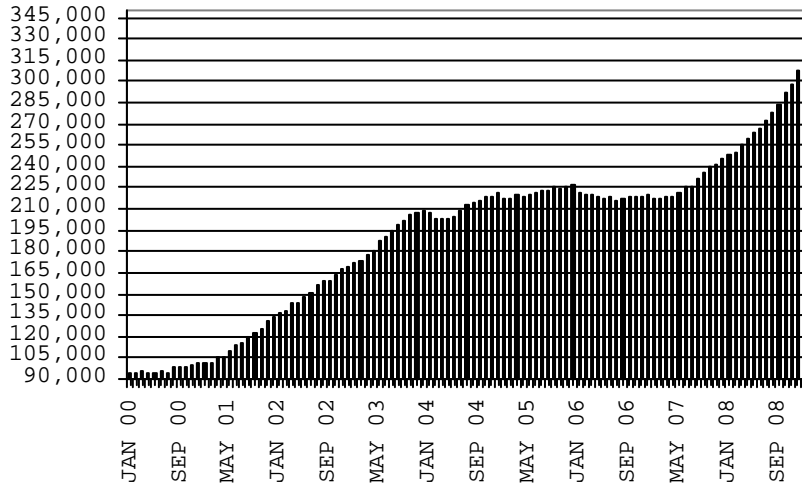
	CHANGE FROM										
	JANUARY 2009					DECEMBER 2008			JANUARY 2008		
	HOUSEHOLDS	PERSONS	TOTAL COUPON ISSUANCE	AVERAGE ALLOT./ HOUSEHOLD	AVERAGE ALLOT./ PERSON	HOUSEHOLDS	PERSONS	TOTAL COUPON ISSUANCE	HOUSEHOLDS	PERSONS	TOTAL COUPON ISSUANCE
ARIZONA	315,732	756,960	84,931,899	269.00	112.20	7,458	14,024	1,579,572	67,705	154,953	23,869,528
DISTRICT I											
MARICOPA	163,155	393,849	45,179,881	276.91	114.71	4,534	9,127	1,058,934	39,558	92,610	14,010,267
DISTRICT II											
PIMA	54,896	122,589	13,801,474	251.41	112.58	1,152	1,779	222,577	10,707	21,794	3,555,231
DISTRICT III											
APACHE	6,889	20,443	2,175,819	315.84	106.43	63	34	3,773	610	1,219	303,565
COCONINO	6,839	19,417	2,044,849	299.00	105.31	231	539	71,285	1,088	2,812	451,893
NAVAJO	11,308	31,098	3,299,719	291.80	106.11	319	873	92,321	1,489	3,651	603,226
YAVAPAI	9,604	19,817	2,200,550	229.13	111.04	324	641	80,708	2,690	5,744	807,083
DISTRICT IV											
LA PAZ	28,014	64,863	6,932,673	247.47	106.88	(13)	(736)	(153,276)	5,146	10,980	1,706,655
MOHAVE	1,556	3,275	379,498	243.89	115.88	44	18	7,629	245	410	85,653
YUMA	14,702	30,361	3,449,810	234.65	113.63	311	594	53,572	3,129	5,959	919,559
	11,756	31,227	3,103,365	263.98	99.38	(368)	(1,348)	(214,477)	1,772	4,611	701,443
DISTRICT V											
GILA	20,552	50,988	5,695,122	277.11	111.70	472	1,044	104,997	4,036	10,517	1,543,089
PINAL	4,321	9,753	1,101,512	254.92	112.94	100	187	25,062	613	1,195	216,228
	16,231	41,235	4,593,610	283.01	111.40	372	857	79,935	3,423	9,322	1,326,861
DISTRICT VI											
COCHISE	14,475	33,896	3,601,812	248.83	106.26	376	723	98,253	2,381	5,626	888,519
GRAHAM	8,319	18,263	1,959,103	235.50	107.27	119	112	26,230	1,204	2,532	422,396
GREENLEE	2,444	5,782	634,779	259.73	109.79	194	510	61,245	324	736	143,414
SANTA CRUZ	341	738	79,841	234.14	108.19	34	85	9,509	103	259	29,239
	3,371	9,113	928,089	275.32	101.84	29	16	1,269	750	2,099	293,470

1/EXCLUDES: PRIOR MONTH NET TOTALS OF : 8,022 CASES; 20,570 RECIPIENTS; \$1,530,299.  
 AGED CANCELATIONS: 0 CASES; 0 RECIPIENTS; 0.  
 SNAP COUPON CONVERSIONS: 0 CASES; 0 RECIPIENTS; \$0.  
 SNAP REINSTATED: 0 CASES; \$0.  
 SNAP ZERO PAY: 9,281 CASES; 37,966 RECIPIENTS.

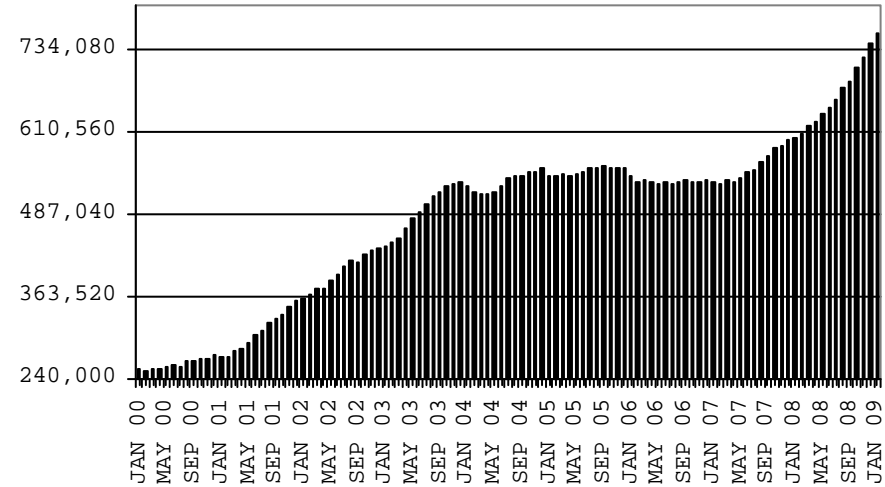
# CHART 6

## SUPPLEMENTAL NUTRITION ASSISTANCE PROGRAM (SNAP) COMPARISON OF HOUSEHOLDS, RECIPIENTS, PAYMENTS & AVERAGE PAYMENTS FOR 1999, 2000, 2001, 2002, 2003, 2004, 2005, 2006, 2007, & 2008

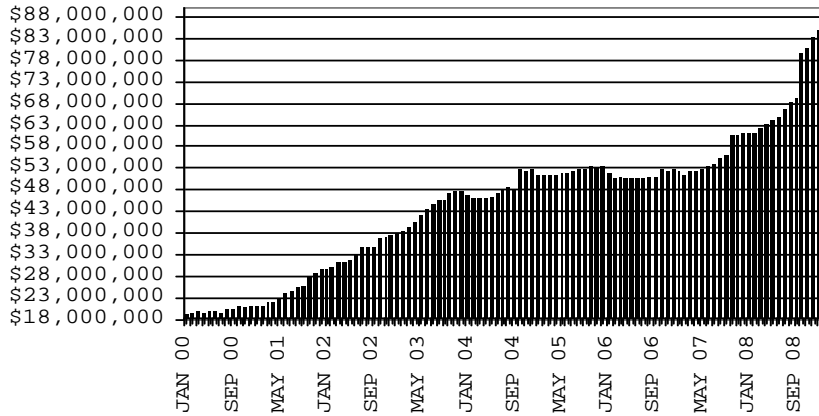
### HOUSEHOLDS



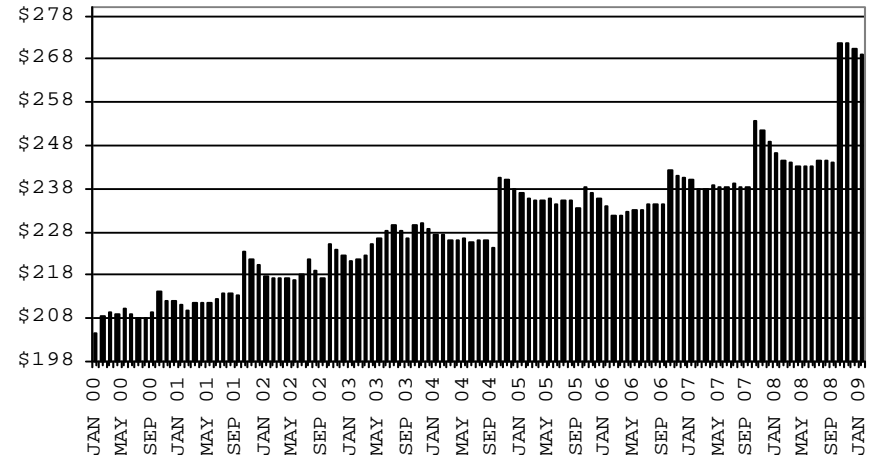
### RECIPIENTS



### TOTAL PAYMENTS



### AVERAGE PAYMENT PER HOUSEHOLD



**TABLE 7A**  
**MEDICAL ASSISTANCE PROGRAM**  
**RECIPIENTS**

**JANUARY 2009**

	SOBRA WOMAN 133% FPL	SOBRA CHILD	ADULT W/O CHILD 100% FPL	FOSTER CARE	1931 36% FPL	FEDERAL EMERGENCY SERVICES	INFANTS	ADULT W/O CHILD 40% FPL	MEDICAL W/SPEND DOWN	SOBRA WOMAN 100% FPL	SOBRA CHILD 100% FPL	TRANSITIONAL MEDICAL T1 - T4	1931 100% FPL	YATI	OTHER	TOTAL CASES
ARIZONA	11,565	65,835	43,152	11,012	299,803	85,951	49,046	109,175	5,773	3,602	182,230	43,735	89,135	287	26,027	1,026,328
DISTRICT I																
MARICOPA	5,982	37,097	19,073	5,614	163,140	66,692	29,166	50,886	2,962	1,838	103,903	20,675	42,797	146	13,056	563,027
DISTRICT II																
PIMA	1,832	10,037	8,374	3,098	45,009	10,508	6,910	19,736	911	560	27,433	7,711	15,364	92	4,626	162,201
DISTRICT III																
APACHE	224	1,421	926	41	10,677	96	952	4,163	100	86	3,877	1,021	2,383	3	383	26,353
COCONINO	357	1,471	1,220	136	7,743	543	1,146	3,226	163	110	4,031	1,167	2,407	5	394	24,119
NAVAJO	406	2,362	1,479	133	11,770	359	1,390	5,170	170	130	4,903	1,455	3,161	4	609	33,501
YAVAPAI	430	1,857	1,950	440	6,636	1,512	1,267	3,564	328	109	4,679	1,294	2,991	13	1,087	28,157
DISTRICT IV																
LA PAZ	29	230	224	8	1,242	164	186	654	33	10	622	165	351	0	164	4,082
MOHAVE	460	2,152	2,283	265	10,721	894	1,559	5,819	406	152	7,072	1,868	4,280	3	1,393	39,327
YUMA	594	2,460	2,319	268	10,501	1,886	1,950	3,415	204	187	8,219	3,722	5,036	1	1,307	42,069
DISTRICT V																
GILA	152	666	586	77	4,067	154	491	2,172	70	54	1,782	433	1,115	0	333	12,152
PINAL	559	3,764	2,070	562	16,203	1,795	2,225	5,942	208	192	8,032	2,051	4,411	14	1,256	49,284
DISTRICT VI																
COCHISE	252	1,225	1,421	257	6,378	690	900	2,580	130	86	3,681	1,128	2,420	6	799	21,953
GRAHAM	146	461	407	76	2,324	52	397	990	29	31	1,108	421	759	0	158	7,359
GREENLEE	26	47	47	7	273	10	55	122	3	6	172	26	82	0	20	896
SANTA CRUZ	116	585	773	30	3,119	596	452	736	56	51	2,716	598	1,578	0	442	11,848

**TABLE 7B**

**MEDICAL ASSISTANCE PROGRAM**

**RECIPIENTS**

**CHANGE FROM**

**DECEMBER 2008**

	SOBRA WOMAN 133% FPL	SOBRA CHILD	ADULT W/O CHILD 100% FPL	FOSTER CARE	1931 36% FPL	FEDERAL EMERGENCY SERVICES	INFANTS	ADULT W/O CHILD 40% FPL	MEDICAL W/SPEND DOWN	SOBRA WOMAN 100% FPL	SOBRA CHILD 100% FPL	TRANSITIONAL MEDICAL T1 - T4	1931 100% FPL	YATI	OTHER	TOTAL CASES
ARIZONA	215	1,264	1,593	49	5,422	1,770	28	3,178	203	97	4,250	163	2,536	19	521	21,308
DISTRICT I																
MARICOPA	32	837	824	59	3,903	1,562	2	1,882	140	67	3,053	(488)	1,714	1	444	14,032
DISTRICT II																
PIMA	64	102	180	(11)	531	178	33	483	28	10	474	(33)	301	6	35	2,381
DISTRICT III																
APACHE	16	15	123	1	53	11	(4)	38	27	(5)	115	(26)	112	0	(8)	468
COCONINO	(10)	(2)	53	4	281	18	8	110	26	4	129	(78)	69	1	25	638
NAVAJO	31	60	162	0	315	19	6	47	7	16	26	(6)	81	1	15	780
YAVAPAI	22	17	73	(11)	310	27	(1)	127	4	(6)	114	(25)	108	1	23	783
DISTRICT IV																
LA PAZ	(6)	5	10	0	(9)	9	1	13	0	(6)	3	(19)	14	0	(8)	7
MOHAVE	9	68	96	12	264	21	(14)	202	6	(7)	151	(99)	111	1	(8)	813
YUMA	17	6	(61)	(2)	(781)	(147)	14	(133)	(11)	0	(309)	1,092	(256)	(1)	(33)	(605)
DISTRICT V																
GILA	14	109	78	10	450	62	(1)	251	(23)	8	256	(79)	143	5	5	1,288
PINAL	10	1	15	5	61	12	0	51	0	(1)	105	(51)	53	0	(7)	254
	4	108	63	5	389	50	(1)	200	(23)	9	151	(28)	90	5	12	1,034
DISTRICT VI																
COCHISE	10	68	37	(8)	96	9	(13)	95	8	4	111	(96)	78	4	4	407
GRAHAM	(1)	5	23	(2)	85	(2)	(8)	71	(8)	3	81	(67)	83	0	20	283
GREENLEE	7	15	4	(1)	(12)	0	1	13	0	0	39	(8)	14	0	(1)	71
SANTA CRUZ	10	(41)	(9)	(2)	(64)	3	4	(21)	(1)	9	7	95	(36)	0	8	(38)

**TABLE 7C**

**MEDICAL ASSISTANCE PROGRAM**

**RECIPIENTS**

**CHANGE FROM**

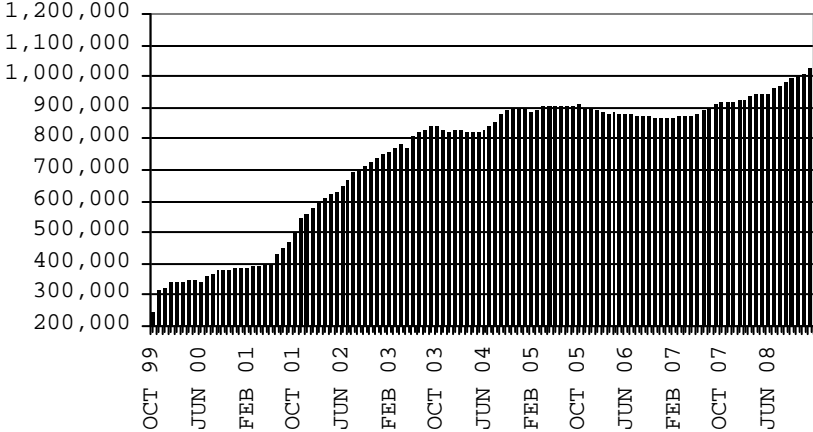
**JANUARY 2008**

	SOBRA WOMAN 133% FPL	SOBRA CHILD	ADULT W/O CHILD 100% FPL	FOSTER CARE	1931 36% FPL	FEDERAL EMERGENCY SERVICES	INFANTS	ADULT W/O CHILD 40% FPL	MEDICAL W/SPEND DOWN	SOBRA WOMAN 100% FPL	SOBRA CHILD 100% FPL	TRANSITIONAL MEDICAL T1 - T4	3E 1931 100% FPL	YATI	OTHER	TOTAL CASES
ARIZONA	68	3,973	5,085	1,271	40,722	873	(1,294)	17,343	514	398	21,192	(1,039)	12,399	43	3,425	104,973
DISTRICT I																
MARICOPA	79	2,518	2,825	777	27,797	1,058	(1,163)	10,515	159	245	14,185	(468)	7,045	33	1,993	67,598
DISTRICT II																
PIMA	89	616	875	326	4,598	(44)	(224)	2,866	87	6	2,185	373	1,421	13	576	13,763
DISTRICT III	(18)	538	557	44	2,669	(28)	(155)	1,150	228	36	1,695	(87)	1,430	0	254	8,313
APACHE	(24)	92	58	0	316	(16)	2	(125)	27	2	220	(118)	131	2	22	589
COCONINO	(19)	78	38	19	653	19	(50)	199	72	16	321	37	275	(5)	51	1,704
NAVAJO	38	283	185	18	526	17	(10)	393	9	9	516	32	443	2	43	2,504
YAVAPAI	(13)	85	276	7	1,174	(48)	(97)	683	120	9	638	(38)	581	1	138	3,516
DISTRICT IV	(59)	34	414	50	2,134	(232)	116	1,397	93	24	1,124	(431)	1,071	1	305	6,041
LA PAZ	(10)	(4)	7	(12)	77	(33)	4	80	(5)	(3)	35	(53)	29	0	13	125
MOHAVE	(55)	89	278	40	1,282	(30)	25	1,048	87	7	670	(90)	585	1	176	4,113
YUMA	6	(51)	129	22	775	(169)	87	269	11	20	419	(288)	457	0	116	1,803
DISTRICT V	(43)	36	233	59	2,513	93	54	1,026	(58)	61	1,554	(136)	976	(2)	161	6,527
GILA	20	(70)	33	4	16	18	20	166	(29)	22	298	(98)	192	(2)	45	635
PINAL	(63)	106	200	55	2,497	75	34	860	(29)	39	1,256	(38)	784	0	116	5,892
DISTRICT VI	20	231	181	15	1,011	26	78	389	5	26	449	(290)	456	(2)	136	2,731
COCHISE	(10)	175	101	6	162	(14)	40	207	3	16	139	(31)	197	1	54	1,046
GRAHAM	14	27	6	16	293	(27)	29	129	10	(1)	6	(95)	134	(3)	33	571
GREENLEE	(2)	7	11	(3)	(5)	5	(6)	23	(1)	6	59	(37)	20	0	2	79
SANTA CRUZ	18	22	63	(4)	561	62	15	30	(7)	5	245	(127)	105	0	47	1,035

# CHART 7

## MEDICAL ASSISTANCE PROGRAM COMPARISON OF RECIPIENTS FOR 1999, 2000, 2001, 2002, 2003, 2004, 2005, 2006, 2007, & 2008

TOTAL RECIPIENTS



NEW SERIES WHICH INCLUDES 1931