



DEPARTMENT OF ECONOMIC SECURITY

Your Partner For A Stronger Arizona

State of Arizona

Department of Economic Security

Family Assistance Administration

Statistical Bulletin

February, 2009

Phone: (602) 542-3678

<http://www.azdes.gov/faa/Statistics.asp>

**** STATISTICAL BULLETIN ****
ARIZONA DEPARTMENT OF ECONOMIC SECURITY
FAMILY ASSISTANCE ADMINISTRATION
BOX 6123, PHOENIX, ARIZONA 85005
PHONE (602) 542-3678

FEBRUARY 2009

THIS ISSUE OF THE STATISTICAL BULLETIN COMPARES FEBRUARY 2009 DATA FOR EACH OF THE INDICATED PROGRAMS WITH THE INFORMATION FOR JANUARY 2009 AND FEBRUARY 2008. STATEWIDE SUMMARIES OF ACTIVITY WITHIN EACH OF THE SPECIFIC PROGRAMS FOR THIS REPORT PERIOD ARE DISCUSSED BELOW. THE TABLES COMPARE CURRENT AND PRIOR MONTH DATA. DISTRICT AND COUNTY COMPARISONS ARE PROVIDED WITHIN THIS BULLETIN

CASH ASSISTANCE (CA)

COMPARING TO JANUARY 2009, FEBRUARY 2009 CASES DECREASED BY 114 (0.31%) TO 37,202. RECIPIENTS DECREASED BY 264 (0.33%) TO 79,634. PAYMENTS DECREASED BY \$41,597 (0.42%) TO \$9,815,346. AVERAGE PAYMENT PER CASE DECREASED BY \$0.31 (0.12%) TO \$263.84. PAYMENT PER RECIPIENT DECREASED BY \$0.11 (0.09%) TO \$123.26.

COMPARING TO FEBRUARY 2008, FEBRUARY 2009 CASES INCREASED BY 1,819 (5.14%). RECIPIENTS INCREASED BY 4,325 (5.74%). TOTAL PAYMENTS INCREASED BY \$412,827 (4.39%). THE AVERAGE PAYMENT PER CASE DECREASED BY \$1.90 (0.71%). THE AVERAGE PAYMENT PER RECIPIENT DECREASED BY \$1.59 (1.21%).

CASH ASSISTANCE UNEMPLOYED PARENT PROGRAM (CA-UP)

COMPARING TO JANUARY 2009, FEBRUARY 2009 CASES INCREASED BY 52 (3.52%) TO 1,531. RECIPIENTS INCREASED BY 114 (2.14%) TO 5,448. PAYMENTS INCREASED BY \$10,875 (2.07%) TO \$537,325. AVERAGE PAYMENT PER CASE DECREASED BY \$4.99 (1.40%) TO \$350.96. PAYMENT PER RECIPIENT DECREASED BY \$0.07 (0.07%) TO \$98.63.

COMPARING TO FEBRUARY 2008, FEBRUARY 2009 CASES INCREASED BY 754 (97.04%). RECIPIENTS INCREASED BY 2,568 (89.17%). TOTAL PAYMENTS INCREASED BY \$264,011 (96.60%). THE AVERAGE PAYMENT PER CASE DECREASED BY \$0.80 (0.23%). THE AVERAGE PAYMENT PER RECIPIENT INCREASED BY \$3.73 (3.93%).

CASH ASSISTANCE WITH GRANT UNDER \$100 (CA-MOE)

COMPARING TO JANUARY 2009, FEBRUARY 2009 CASES DECREASED BY 3 (0.40%) TO 743. RECIPIENTS DECREASED BY 21 (1.35%) TO 1,529. PAYMENTS DECREASED BY \$1,775 (3.16%) TO \$54,396. AVERAGE PAYMENT PER CASE DECREASED BY \$2.09 (2.78%) TO \$73.21. AVERAGE PAYMENT PER RECIPIENT DECREASED BY \$0.66 (1.82%) TO \$35.58.

COMPARING TO FEBRUARY 2008, FEBRUARY 2009 CASES INCREASED BY 138 (22.81%). RECIPIENTS INCREASED BY 303 (24.71%). TOTAL PAYMENTS INCREASED BY \$8,514 (18.56%). THE AVERAGE PAYMENT PER CASE DECREASED BY \$2.63 (3.47%). THE AVERAGE PAYMENT PER RECIPIENT DECREASED BY \$1.84 (4.92%).

CASH ASSISTANCE UNEMPLOYED PARENT PROGRAM WITH GRANT UNDER \$100 (CA-UP-MOE) NEW PROGRAM STARTING 7/01

COMPARING TO JANUARY 2009, FEBRUARY 2009 CASES INCREASED BY 2 (7.69%) TO 28. RECIPIENTS INCREASED BY 0 (0.00%) TO 75. PAYMENTS DECREASED BY \$100 (6.73%) TO \$1,386. AVERAGE PAYMENT PER CASE DECREASED BY \$7.65 (13.39%) TO \$49.50. PAYMENT PER RECIPIENT DECREASED BY \$1.33 (6.71%) TO \$18.48.

COMPARING TO FEBRUARY 2008, FEBRUARY 2009 CASES INCREASED BY 16 (133.33%). RECIPIENTS INCREASED BY 40 (2.69%). TOTAL PAYMENTS INCREASED BY \$694 (100.29%). THE AVERAGE PAYMENT PER CASE DECREASED BY \$8.17 (14.17%). THE AVERAGE PAYMENT PER RECIPIENT DECREASED BY \$1.29 (6.53%).

GENERAL ASSISTANCE (GA)

COMPARING TO JANUARY 2009, FEBRUARY 2009 CASES DECREASED BY 245 (14.49%) TO 1,446. RECIPIENTS DECREASED BY 246 (14.48%) TO 1,453. PAYMENTS DECREASED BY \$36,185 (14.43%) TO \$214,593. AVERAGE PAYMENT PER CASE INCREASED BY \$0.10 (0.07%) TO \$148.40. AVERAGE PAYMENT PER RECIPIENT INCREASED BY \$0.09 (0.06%) TO \$147.69.

COMPARING TO FEBRUARY 2008, FEBRUARY 2009 CASES INCREASED BY 77 (5.62%). RECIPIENTS INCREASED BY 80 (5.83%). TOTAL PAYMENTS INCREASED BY \$7,702 (3.72%). THE AVERAGE PAYMENT PER CASE DECREASED BY \$2.73 (1.80%). THE AVERAGE PAYMENT PER RECIPIENT DECREASED BY \$3.00 (1.99%).

TUBERCULOSIS CONTROL PROGRAM (TC)

COMPARING TO JANUARY 2009, FEBRUARY 2009 CASES DECREASED BY 3 (42.86%) TO 4. RECIPIENTS DECREASED BY 3 (42.86%) TO 4. PAYMENTS DECREASED BY \$343 (37.90%) TO \$562. AVERAGE PAYMENT PER CASE INCREASED BY \$11.21 (8.67%) TO \$140.50. AVERAGE PAYMENT PER RECIPIENT INCREASED BY \$11.21 (8.67%) TO \$140.50.

COMPARING TO FEBRUARY 2008, FEBRUARY 2009 CASES DECREASED BY 9 (69.23%). RECIPIENTS DECREASED BY 9 (69.23%). TOTAL PAYMENTS DECREASED BY \$927 (62.26%). THE AVERAGE PAYMENT PER CASE INCREASED BY \$25.96 (22.67%). THE AVERAGE PAYMENT PER RECIPIENT INCREASED BY \$25.96 (22.67%).

SUPPLEMENTAL NUTRITION ASSISTANCE PROGRAM (SNAP)

COMPARING TO JANUARY 2009, FEBRUARY 2009 SUPPLEMENTAL NUTRITION ASSISTANCE HOUSEHOLDS INCREASED BY 6,846 (2.17%) TO 322,578. PERSONS RECEIVING SUPPLEMENTAL NUTRITION ASSISTANCE INCREASED BY 15,574 (2.06%) TO 772,534. TOTAL COUPON ISSUANCE INCREASED BY \$1,526,249 (1.80%) TO \$86,458,148. THE AVERAGE HOUSEHOLD ALLOTMENT DECREASED BY \$0.98 (0.36%) TO \$268.02. THE AVERAGE ALLOTMENT PER PERSON DECREASED BY \$0.28 (0.25%) TO \$111.92.

COMPARING TO FEBRUARY 2008, FEBRUARY 2009 SUPPLEMENTAL NUTRITION ASSISTANCE HOUSEHOLDS INCREASED BY 72,953 (29.23%). PERSONS RECEIVING SUPPLEMENTAL NUTRITION ASSISTANCE INCREASED BY 165,971 (27.36%). TOTAL COUPON ISSUANCE INCREASED BY \$25,463,635 (41.75%). THE AVERAGE ALLOTMENT PER HOUSEHOLD INCREASED BY \$23.68 (9.69%). THE AVERAGE ALLOTMENT PER PERSON INCREASED BY \$11.36 (11.30%).

MEDICAL ASSISTANCE PROGRAM (MA) NEW TABLE INCLUDES PROP. 204 CATEGORIES

COMPARING TO JANUARY 2009, FEBRUARY 2009 TOTAL RECIPIENTS TOTAL RECIPIENTS INCREASED BY 9,811 (0.96%). SOBRA WOMEN AT 140% FPL DECREASED BY 174 (1.50%). SOBRA CHILDREN DECREASED BY 967 (1.47%). ADULTS W/O CHILD AT 100% INCREASED BY 283 (0.66%). FOSTER CARE INCREASED BY 8 (0.07%). 1931 AT 36% FPL INCREASED BY 4,951 (1.65%). EMERGENCY SERVICES INCREASED BY 973 (1.13%). INFANTS DECREASED BY 681 (1.39%). ADULT W/O CHILD AT 140% INCREASED BY 1,521 (1.39%). MEDICAL W/SPEND DOWN DECREASED BY 100 (1.73%). SOBRA WOMAN AT 100% INCREASED BY 78 (2.17%). SOBRA CHILD AT 100% INCREASED BY 2,268 (1.24%). TRANSITIONAL MEDICAL DECREASED BY 311 (0.71%). 1931 AT 100% INCREASED BY 1,827 (2.05%). YATI INCREASED BY 5 (1.74%). ALL OTHER CATEGORIES INCREASED BY 130 (0.50%).

COMPARING TO FEBRUARY 2008, FEBRUARY 2009 TOTAL RECIPIENTS TOTAL RECIPIENTS INCREASED BY 111,980 (12.12%). SOBRA WOMEN AT 140% FPL DECREASED BY 139 (1.21%). SOBRA CHILDREN INCREASED BY 2,799 (4.51%). ADULTS W/O CHILD AT 100% INCREASED BY 5,094 (13.29%). FOSTER CARE INCREASED BY 1,229 (12.55%). 1931 AT 36% FPL INCREASED BY 44,930 (17.29%). EMERGENCY SERVICES INCREASED BY 2,053 (2.42%). INFANTS DECREASED BY 1,682 (3.36%). ADULT W/O CHILD AT 140% INCREASED BY 17,206 (18.40%). MEDICAL W/SPEND DOWN INCREASED BY 592 (11.65%). SOBRA WOMAN AT 100% INCREASED BY 402 (12.26%). SOBRA CHILD AT 100% INCREASED BY 22,819 (14.11%). TRANSITIONAL MEDICAL DECREASED BY 523 (1.19%). 1931 AT 100% INCREASED BY 13,796 (17.88%). YATI INCREASED BY 62 (26.96%). ALL OTHER CATEGORIES INCREASED BY 3,342 (14.65%).

TANF SUMMARY

TABLES 1, 1A, 1B, & 1C: ARIZONA 1

	FEBRUARY 2009							JANUARY 2009			FEBRUARY 2008		
	FAMILIES (CASES)	PERSONS (RECIP.)	ADULTS	CHILDREN	TOTAL PAYMENTS	AVERAGE	AVERAGE	FAMILIES (CASES)	PERSONS (RECIP.)	TOTAL PAYMENTS	FAMILIES (CASES)	PERSONS (RECIP.)	TOTAL PAYMENTS
						PAYMENT/ CASE	PAYMENT/ RECIP.						
ARIZONA	39,504	86,686	21,568	65,118	10,408,453	263.48	120.07	(63)	(171)	(32,597)	2,727	7,236	686,046
DISTRICT I													
MARICOPA	23,268	51,908	12,121	39,787	6,201,394	266.52	119.47	127	306	32,630	2,798	7,041	739,024
DISTRICT II													
PIMA	6,843	14,279	3,784	10,495	1,767,642	258.31	123.79	(81)	(166)	(27,477)	(54)	(10)	(31,390)
DISTRICT III													
APACHE	75	161	43	118	19,176	255.68	119.11	4	17	1,767	(39)	(80)	(9,033)
COCONINO	267	573	148	425	65,024	243.54	113.48	2	0	781	21	67	5,148
NAVAJO	1,353	3,382	1,007	2,375	377,722	279.17	111.69	(12)	(34)	(3,078)	28	136	13,813
YAVAPAI	747	1,484	347	1,137	183,346	245.44	123.55	13	19	1,349	43	103	7,607
DISTRICT IV													
LA PAZ	197	422	137	285	49,077	249.12	116.30	(10)	(19)	(2,902)	(43)	(107)	(11,988)
MOHAVE	1,370	2,907	864	2,043	351,677	256.70	120.98	(17)	(61)	(5,248)	(28)	(10)	(11,874)
YUMA	1,033	2,200	482	1,718	263,415	255.00	119.73	(52)	(152)	(17,081)	(61)	(138)	(19,397)
DISTRICT V													
GILA	711	1,521	542	979	184,968	260.15	121.61	(18)	(28)	(4,709)	9	40	(846)
PINAL	1,977	4,426	1,176	3,250	515,321	260.66	116.43	(37)	(81)	(11,349)	75	137	8,186
DISTRICT VI													
COCHISE	983	1,989	528	1,461	253,363	257.74	127.38	15	31	2,193	(29)	(21)	(5,349)
GRAHAM	365	738	228	510	92,703	253.98	125.61	18	35	4,761	(11)	18	(1,157)
GREENLEE	33	73	20	53	8,981	272.15	123.03	1	6	340	(10)	(18)	(2,436)
SANTA CRUZ	282	623	141	482	74,644	264.70	119.81	(16)	(44)	(4,574)	28	78	5,738

1/EXCLUDES: PRIOR MONTH NET TOTALS OF 1,920 CASES; 4,662 RECIPIENTS; \$394,404.
 1/GRANT DIVERSION TOTALS OF: 261 CASES; \$280,087.
 ZERO PAY TOTALS OF 756 CASES; 2,471 RECIPIENTS.

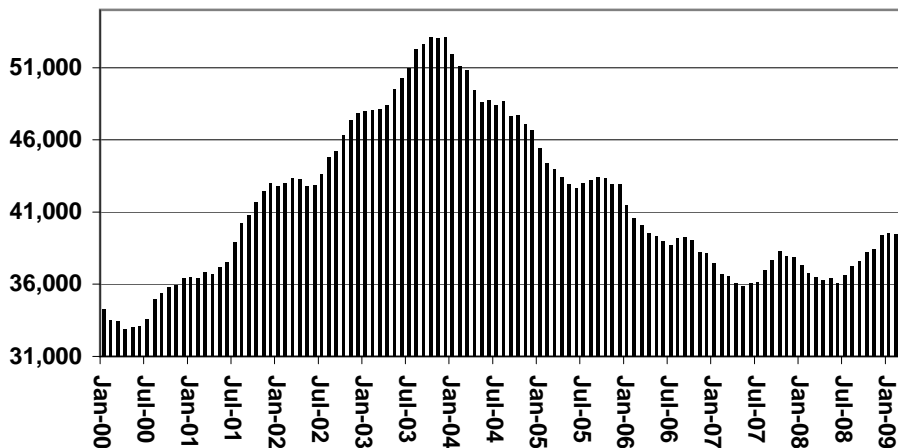
	CURRENT MO. CASES	CURRENT MO. RECIP.	CURRENT MO. DOLLARS	PRIOR MO. CASES	PRIOR MO. RECIP	PRIOR MO. DOLLARS
PASQUA/YAQUI	329	965	\$103,394	18	49	5,624
WM APACHE	706	1,943	\$214,700	16	46	2,995
SALT RIVER	75	263	\$23,212	2	2	105
SAN CARLOS	665	1,440	\$175,784	12	25	2,716
HOPAI	127	370	\$29,783	8	27	538
TOTAL	1,902	4,981	\$546,873	56	149	\$11,978

TANF SUMMARY

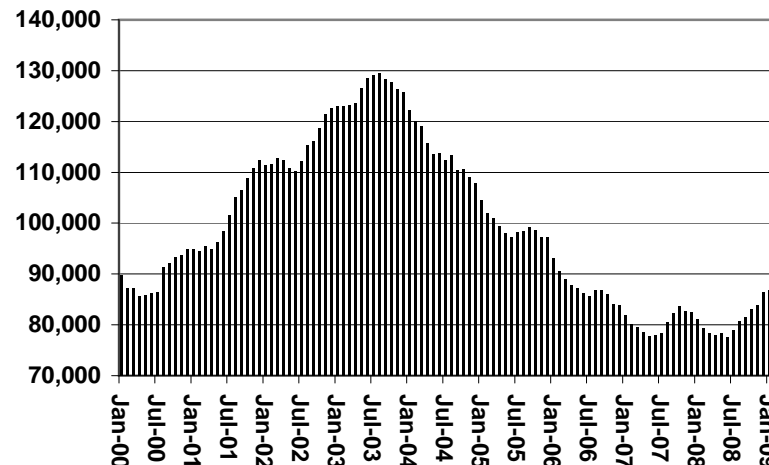
TABLES 1, 1A, 1B, & 1C

COMPARISON OF CASES, RECIPIENTS, PAYMENTS & AVERAGE PAYMENTS
FOR 2000, 2001, 2002, 2003, 2004, 2005, 2006, 2007, & 2008

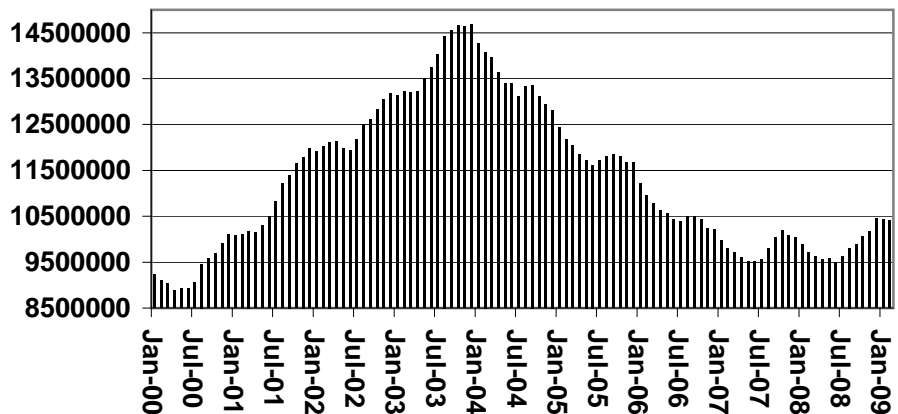
Cases



Recipients



Payments



Average Payments Per Recipient

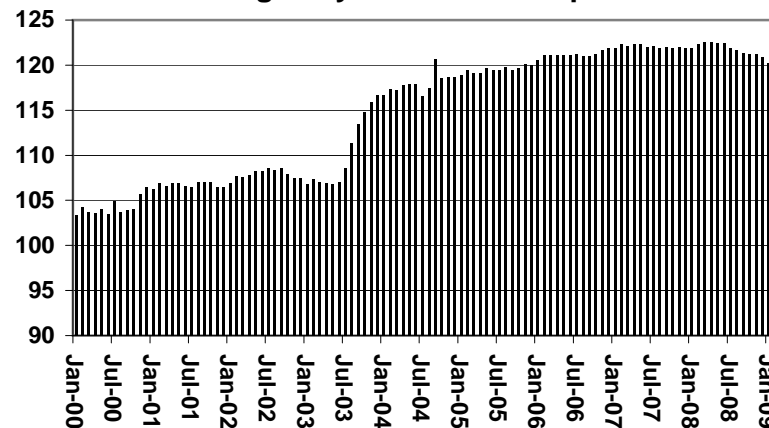
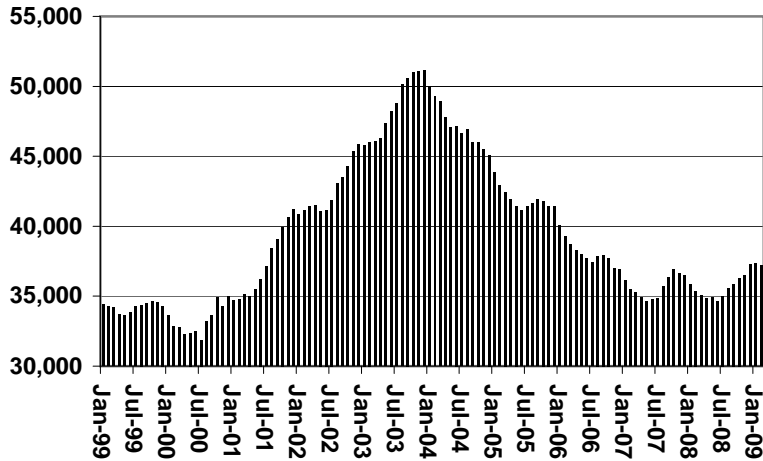


CHART 1

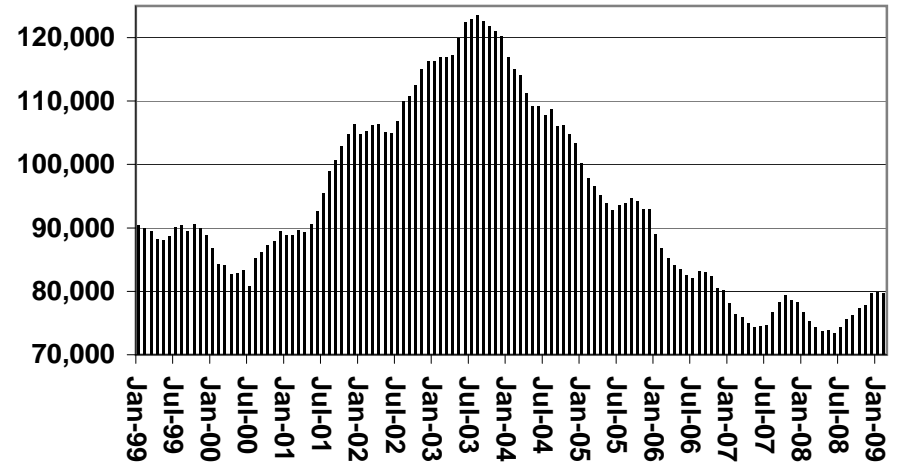
CASH ASSISTANCE PROGRAM

COMPARISON OF CASES, RECIPIENTS, PAYMENTS & AVERAGE PAYMENTS FOR 1999, 2000, 2001, 2002, 2003, 2004, 2005, 2006, 2007, & 2008

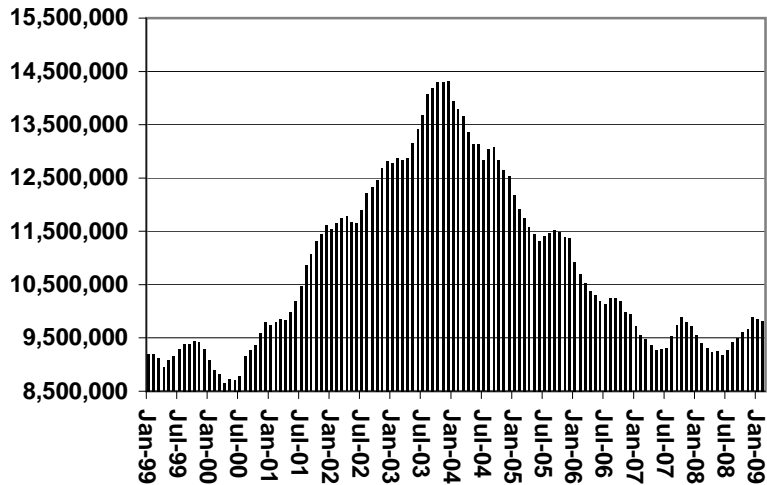
Cases



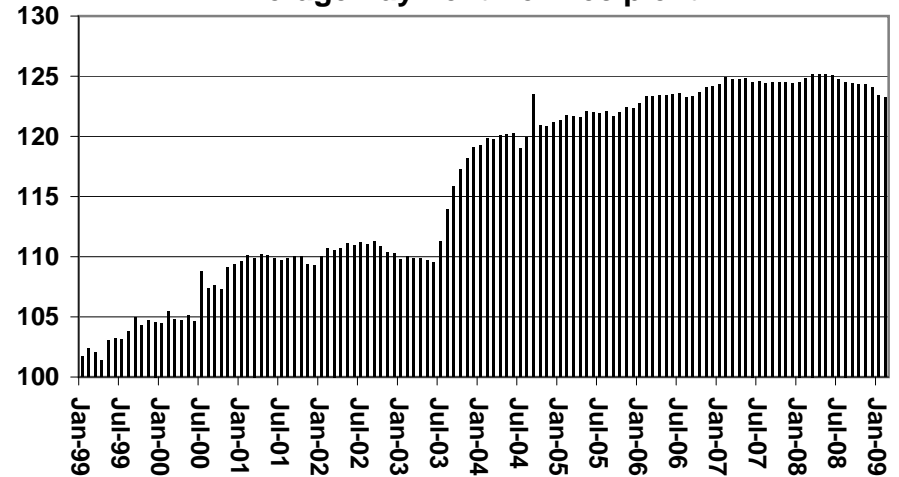
Recipients



Payments



Average Payment Per Recipient



**TABLE 1A
CA-UP**

CASH ASSISTANCE UNEMPLOYED PARENT PROGRAM: ARIZONA 1

	FEBRUARY 2009							CHANGE FROM			FEBRUARY 2008		
	FAMILIES (CASES)	PERSONS (RECIP.)	ADULTS	CHILDREN	TOTAL PAYMENTS	AVERAGE PAYMENT/ CASE	AVERAGE PAYMENT/ RECIP.	FAMILIES (CASES)	PERSONS (RECIP.)	TOTAL PAYMENTS	FAMILIES (CASES)	PERSONS (RECIP.)	TOTAL PAYMENTS
ARIZONA	1,531	5,448	2,137	3,311	537,325	350.96	98.63	52	114	10,875	754	2,568	264,011
DISTRICT I													
MARICOPA	928	3,229	1,120	2,109	323,318	348.40	100.13	52	135	10,414	555	1,906	192,407
DISTRICT II													
PIMA	284	1,056	459	597	103,531	364.55	98.04	26	95	10,913	157	587	59,223
DISTRICT III													
APACHE	3	11	6	5	1,028	342.67	93.45	0	1	328	(1)	(2)	(3)
COCONINO	7	28	12	16	2,507	358.14	89.54	(2)	(6)	(676)	6	24	2,293
NAVAJO	69	261	128	133	24,596	356.46	94.24	(11)	(61)	(5,154)	(4)	(45)	(3,744)
YAVAPAI	23	65	30	35	6,714	291.91	103.29	(2)	(10)	(914)	11	21	2,786
DISTRICT IV													
LA PAZ	9	37	16	21	3,334	370.44	90.11	(1)	(1)	148	(4)	(18)	(969)
MOHAVE	48	178	92	86	16,667	347.23	93.63	(4)	(22)	(2,760)	5	16	1,876
YUMA	15	50	22	28	5,376	358.40	107.52	(5)	(23)	(1,800)	(2)	(13)	(337)
DISTRICT V													
GILA	8	31	14	17	2,937	367.13	94.74	2	10	900	(26)	(86)	(8,719)
PINAL	102	393	185	208	35,879	351.75	91.30	1	20	1,236	51	173	17,801
DISTRICT VI													
COCHISE	26	79	38	41	8,440	324.62	106.84	(1)	(10)	(421)	9	17	2,669
GRAHAM	6	21	12	9	2,252	375.33	107.24	(2)	(8)	(728)	(2)	(8)	(595)
GREENLEE	1	4	2	2	418	418.00	104.50	0	0	0	(1)	(2)	(276)
SANTA CRUZ	2	5	1	4	328	164.00	65.60	(1)	(6)	(611)	0	(2)	(401)

1/EXCLUDES: PRIOR MONTH NET TOTALS OF: 178 CASES; 657 RECIPIENTS; \$69,804.
GRANT DIVERSION TOTALS OF: 0 CASES; \$0.
ZERO PAY TOTALS OF 66 CASES; 266 RECIPIENTS.

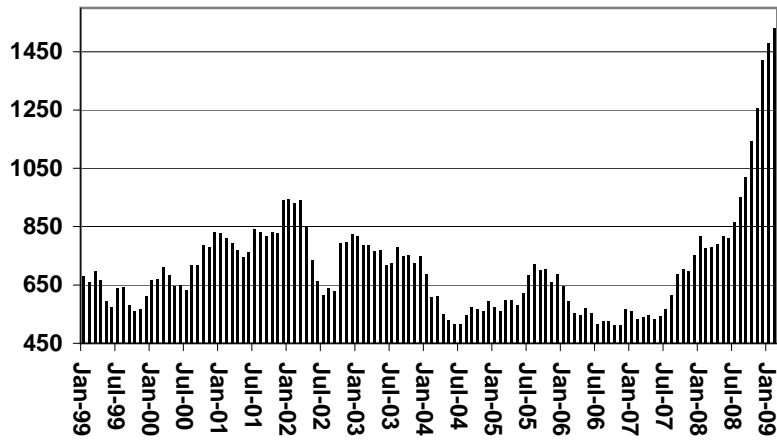
	CURRENT MO. CASES	CURRENT MO. RECIP.	CURRENT MO. DOLLARS	PRIOR MO. CASES	PRIOR MO. RECIP.	PRIOR MO. DOLLARS
PASQUAYUAQUI	19	77	7,263	0	0	0
WM APACHE	41	165	15,031	2	10	565
SALT RIVER	0	0	0	0	0	0
SAN CARLOS	0	0	0	0	0	0
HOPÍ	0	0	0	0	0	0
TOTAL	60	242	22,294	2	10	565

CASES WITH GRANT UNDER \$100 (SEE TABLE 1C).

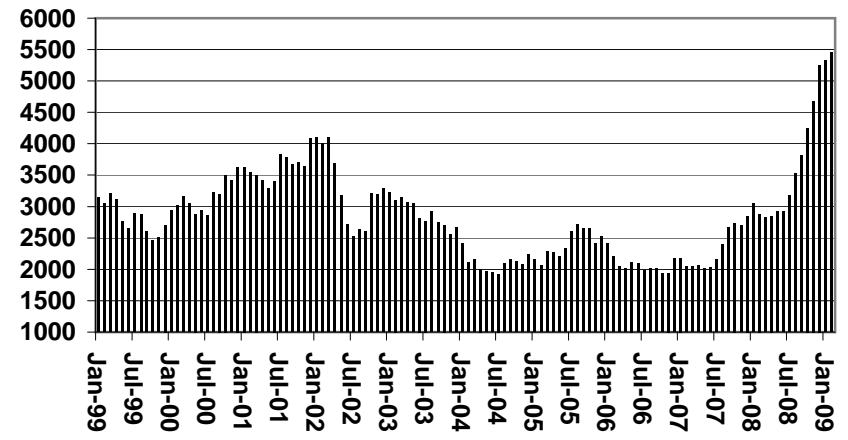
CHART 1A

CASH ASSISTANCE UNEMPLOYED PARENT PROGRAM COMPARISON OF CASES, RECIPIENTS, PAYMENTS & AVERAGE PAYMENTS FOR 1999, 2000, 2001, 2002, 2003, 2004, 2005, 2006, 2007, & 2008

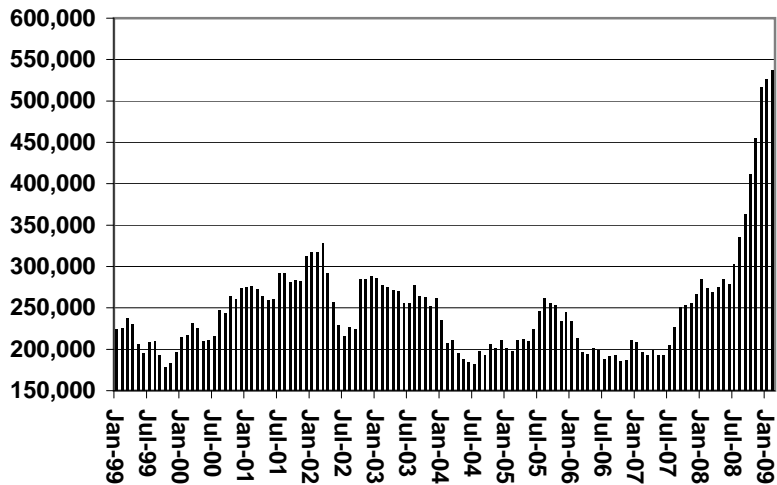
Cases



Recipients



Payments



Average Payment Per Recipient

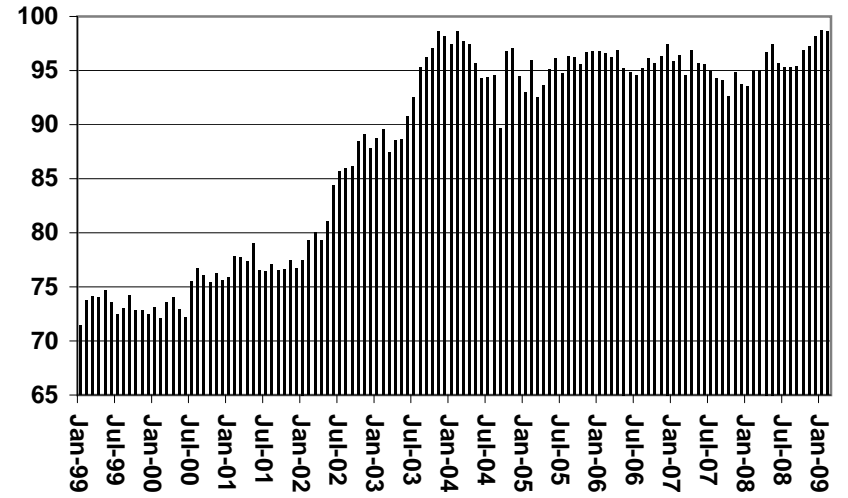


TABLE 1B 1/

CASH ASSISTANCE: ARIZONA
 CASES WITH GRANT UNDER \$100

CHANGE FROM

	FEBRUARY 2009							JANUARY 2009			FEBRUARY 2008		
	FAMILIES (CASES)	PERSONS (RECIP.)	ADULTS	CHILDREN	TOTAL PAYMENTS	AVERAGE PAYMENT/ CASE	AVERAGE PAYMENT/ RECIP.	FAMILIES (CASES)	PERSONS (RECIP.)	TOTAL PAYMENTS	FAMILIES (CASES)	PERSONS (RECIP.)	TOTAL PAYMENTS
ARIZONA	743	1,529	388	1,141	54,396	73.21	35.58	(3)	(21)	(1,775)	138	303	8,514
DISTRICT I													
MARICOPA	429	887	208	679	28,500	66.43	32.13	(1)	(29)	(2,608)	119	251	5,667
DISTRICT II													
PIMA	137	259	83	176	11,212	81.84	43.29	8	12	786	12	0	1,952
DISTRICT III													
APACHE	3	9	2	7	166	55.33	18.44	0	5	22	(4)	(3)	(301)
COCONINO	5	16	4	12	508	101.60	31.75	(1)	2	64	2	9	311
NAVAJO	9	15	4	11	842	93.56	56.13	(4)	(6)	18	(2)	(8)	155
YAVAPAI	26	46	11	35	1,921	73.88	41.76	2	3	229	7	10	435
DISTRICT IV													
LA PAZ	4	10	4	6	360	90.00	36.00	(3)	(5)	(159)	(1)	0	35
MOHAVE	41	86	25	61	3,232	78.83	37.58	(3)	(7)	(265)	12	36	564
YUMA	22	47	14	33	2,259	102.68	48.06	1	(2)	552	(1)	0	528
DISTRICT V													
GILA	7	14	4	10	362	51.71	25.86	(1)	(6)	(110)	0	3	(345)
PINAL	30	78	14	64	2,509	83.63	32.17	0	17	(305)	4	13	(40)
DISTRICT VI													
COCHISE	19	35	9	26	1,698	89.37	48.51	1	(2)	190	(6)	(12)	(464)
GRAHAM	3	7	1	6	319	106.33	45.57	(1)	(2)	48	(6)	(6)	(31)
GREENLEE	1	1	0	1	70	70.00	70.00	1	1	70	0	0	(17)
SANTA CRUZ	7	19	5	14	438	62.57	23.05	(2)	(2)	(307)	2	10	65

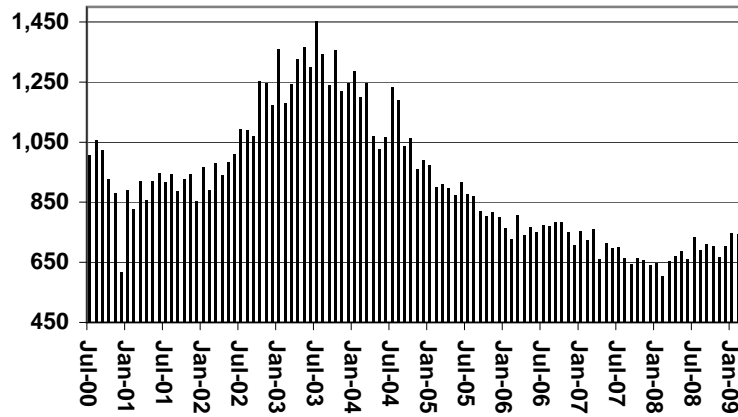
EXCLUDES: PRIOR MONTH NET TOTALS OF 647 CASES; 1,332 RECIPIENTS; \$39,552.

CHART 1B

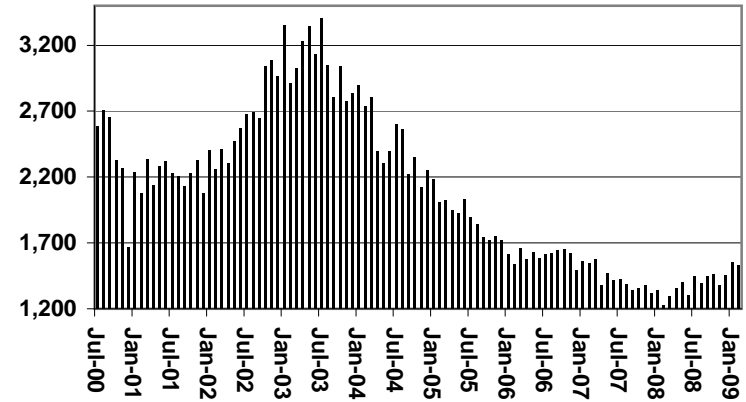
CASH ASSISTANCE PROGRAM CASES WITH GRANT UNDER \$100

COMPARISON OF CASES, RECIPIENTS, PAYMENTS & AVERAGE PAYMENTS FOR 2000, 2001, 2002, 2003, 2004, 2005, 2006, 2007, 2008

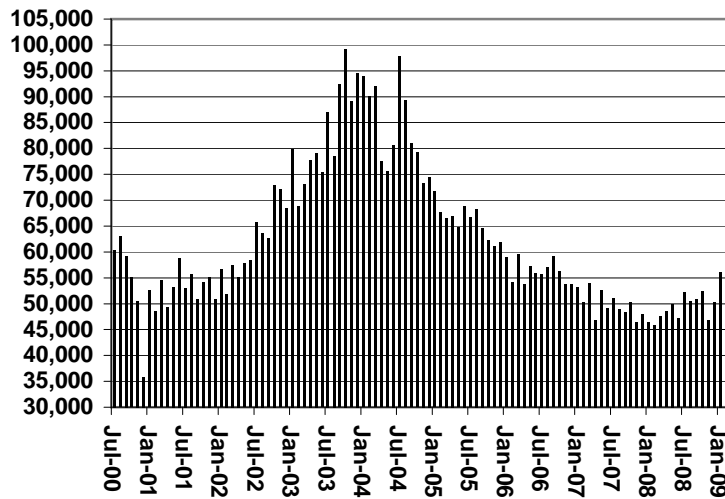
Cases



Recipients



Payments



Average Payment Per Recipient

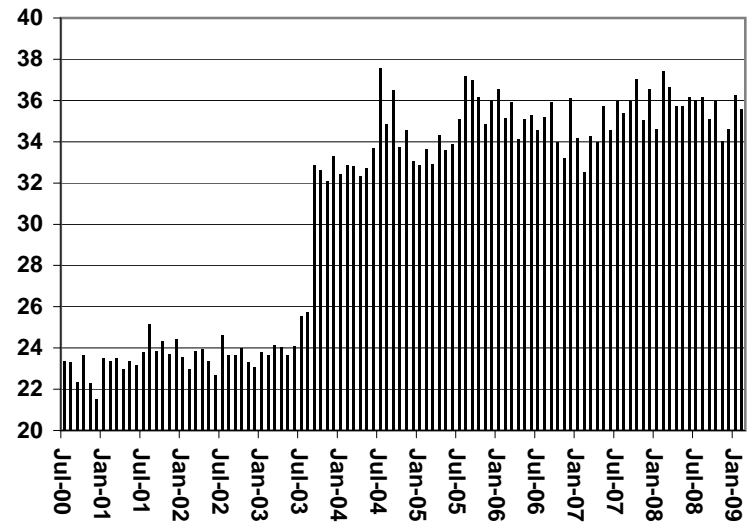


TABLE 1C 1/

CASH ASSISTANCE UNEMPLOYED PARENT PROGRAM: ARIZONA
 CASES WITH GRANT UNDER \$100

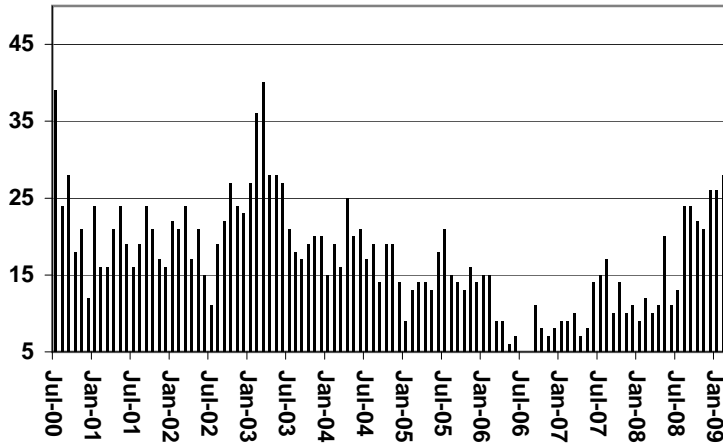
	FEBRUARY 2009							CHANGE FROM			FEBRUARY 2008		
					AVERAGE	AVERAGE	JANUARY 2009			FEBRUARY 2008			
	FAMILIES (CASES)	PERSONS (RECIP.)	ADULTS	CHILDREN	TOTAL PAYMENTS	PAYMENT/ CASE	PAYMENT/ RECIP.	FAMILIES (CASES)	PERSONS (RECIP.)	TOTAL PAYMENTS	FAMILIES (CASES)	PERSONS (RECIP.)	TOTAL PAYMENTS
ARIZONA	28	75	21	54	1,386	49.50	18.48	2	0	(100)	16	40	694
DISTRICT I													
MARICOPA	18	44	6	38	799	44.39	18.16	4	8	(11)	12	31	480
DISTRICT II													
PIMA	3	10	5	5	199	66.33	19.90	(3)	(10)	(61)	2	7	123
DISTRICT III													
APACHE	0	0	0	0	0	0.00	0.00	0	0	0	0	0	0
COCONINO	0	0	0	0	0	0.00	0.00	0	0	0	0	0	0
NAVAJO	0	0	0	0	0	0.00	0.00	0	0	0	0	0	0
YAVAPAI	0	0	0	0	0	0.00	0.00	0	0	0	(1)	(3)	(71)
DISTRICT IV													
LA PAZ	0	0	0	0	0	0.00	0.00	0	0	0	0	0	0
MOHAVE	4	11	6	5	298	74.50	27.09	1	1	83	2	2	136
YUMA	0	0	0	0	0	0.00	0.00	0	0	0	(1)	(4)	(29)
DISTRICT V													
GILA	0	0	0	0	0	0.00	0.00	0	0	0	0	0	0
PINAL	3	10	4	6	90	30.00	9.00	0	1	(111)	2	7	55
DISTRICT VI													
COCHISE	0	0	0	0	0	0.00	0.00	0	0	0	0	0	0
GRAHAM	0	0	0	0	0	0.00	0.00	0	0	0	0	0	0
GREENLEE	0	0	0	0	0	0.00	0.00	0	0	0	0	0	0
SANTA CRUZ	0	0	0	0	0	0.00	0.00	0	0	0	0	0	0

EXCLUDES: PRIOR MONTH NET TOTALS OF 58 CASES; 181 RECIPIENTS; \$2,514.

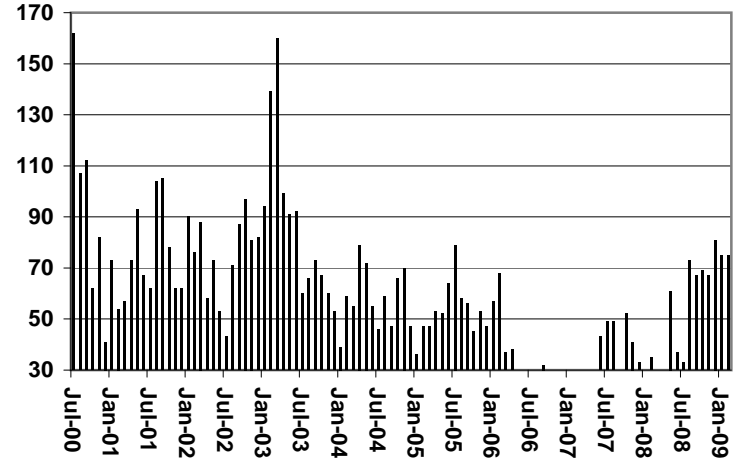
CHART 1C

CASH ASSISTANCE UNEMPLOYED PARENT PROGRAM CASES WITH GRANT UNDER \$100 COMPARISON OF CASES, RECIPIENTS, PAYMENTS & AVERAGE PAYMENTS FOR 2000, 2001, 2002, 2003, 2004, 2005, 2006, 2007, & 2008

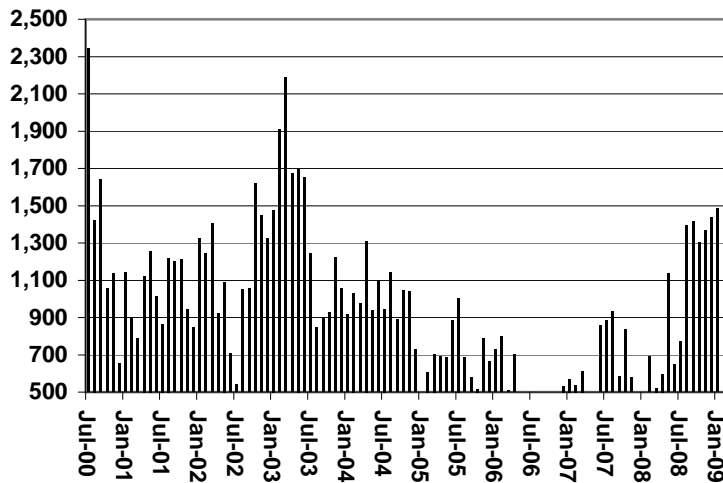
Cases



Recipients



Payments



Average Payment Per Recipient

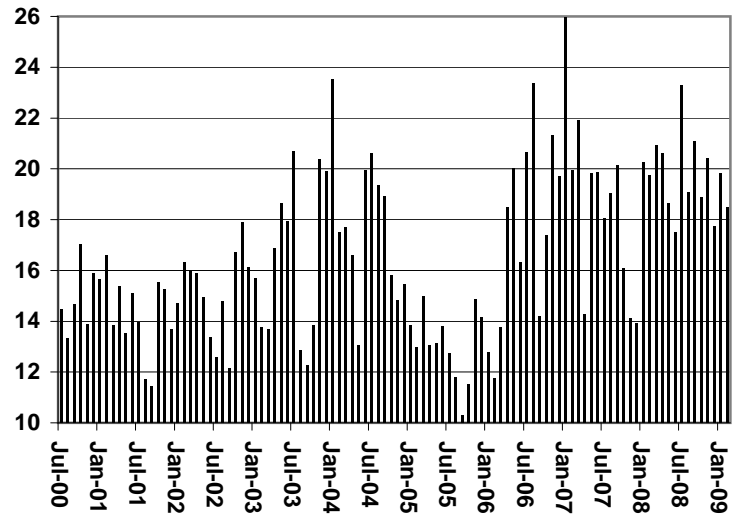


TABLE 2

GENERAL ASSISTANCE: ARIZONA 1/

	CHANGE FROM										
	FEBRUARY 2009					JANUARY 2009			FEBRUARY 2008		
	NUMBER OF PERSONS CASES (RECIP.)	TOTAL PAYMENTS	AVERAGE PAYMENT/ CASE	AVERAGE PAYMENT/ RECIP.	NUMBER OF PERSONS CASES (RECIP.)	TOTAL PAYMENTS	NUMBER OF PERSONS CASES (RECIP.)	TOTAL PAYMENTS			
ARIZONA	1,446	1,453	214,593	148.40	147.69	(245)	(246)	(36,185)	66	70	5,534
DISTRICT I											
MARICOPA	684	684	99,385	145.30	145.30	(119)	(119)	(17,678)	143	142	17,521
DISTRICT II											
PIMA	293	297	44,245	151.01	148.97	(57)	(58)	(8,776)	(68)	(64)	(9,661)
DISTRICT III											
APACHE	5	5	735	147.00	147.00	(1)	(1)	(173)	(7)	(8)	(1,141)
COCONINO	19	19	2,626	138.21	138.21	(2)	(2)	(149)	(5)	(5)	(811)
NAVAJO	52	52	7,295	140.29	140.29	(1)	(1)	113	10	10	872
YAVAPAI	71	72	10,473	147.51	145.46	(12)	(12)	(1,859)	10	10	888
DISTRICT IV											
LA PAZ	7	7	1,015	145.00	145.00	0	0	0	(9)	(9)	(1,280)
MOHAVE	134	135	21,199	158.20	157.03	(13)	(13)	(1,869)	47	48	8,035
YUMA	47	48	6,566	139.70	136.79	(5)	(5)	(474)	20	21	2,675
DISTRICT V											
GILA	80	80	12,167	152.09	152.09	(19)	(19)	(2,846)	(59)	(59)	(9,346)
PINAL	12	12	1,556	129.67	129.67	(1)	(1)	(55)	(18)	(18)	(2,762)
	68	68	10,611	156.04	156.04	(18)	(18)	(2,791)	(41)	(41)	(6,584)
DISTRICT VI											
COCHISE	54	54	8,887	164.57	164.57	(16)	(16)	(2,474)	(16)	(16)	(2,218)
GRAHAM	43	43	7,049	163.93	163.93	(12)	(12)	(1,947)	(8)	(8)	(1,059)
GREENLEE	6	6	1,038	173.00	173.00	(1)	(1)	(73)	(1)	(1)	(173)
SANTA CRUZ	1	1	173	173.00	173.00	0	0	0	(3)	(3)	(454)
	4	4	627	156.75	156.75	(3)	(3)	(454)	(4)	(4)	(532)

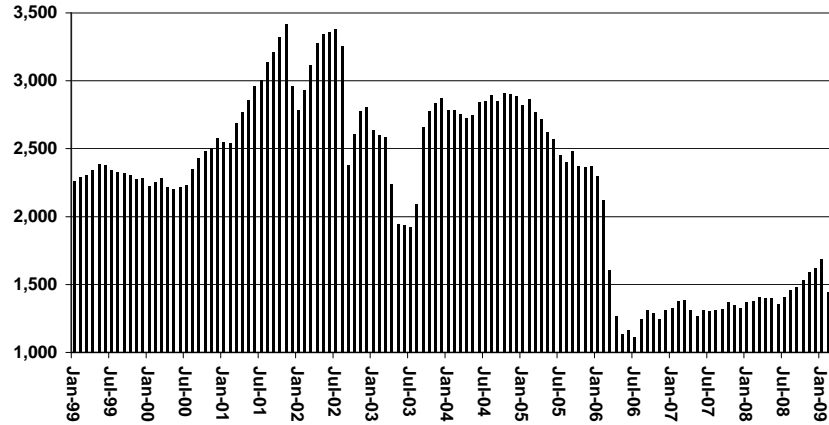
1/EXCLUDES: PRIOR MONTH NET TOTALS OF: 13 CASES; 13 RECIPIENTS; \$4,241.

REFUGEE RESETTLEMENT PROGRAM: 634 CASES; 1,016 RECIPIENTS; \$165,739.

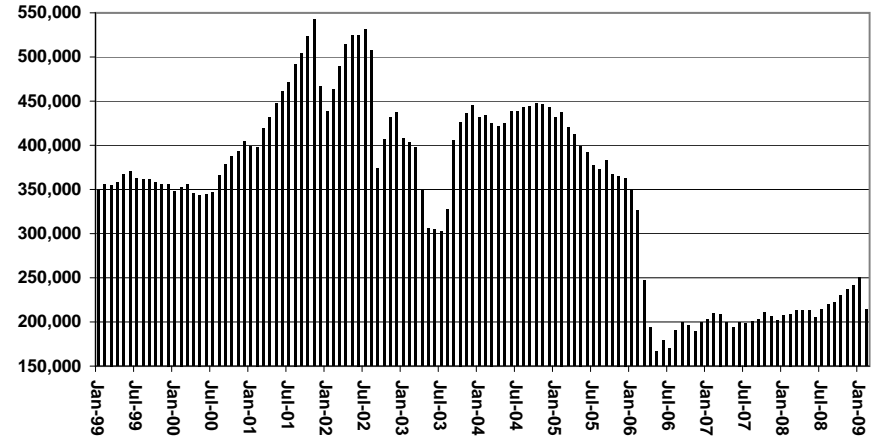
CHART 2

GENERAL ASSISTANCE PROGRAM COMPARISON OF CASES, PAYMENTS & AVERAGE PAYMENTS FOR 1999, 2000, 2001, 2002, 2003, 2004, 2005, 2006, 2007, & 2008

Cases



Payments



Average Payment Per Case

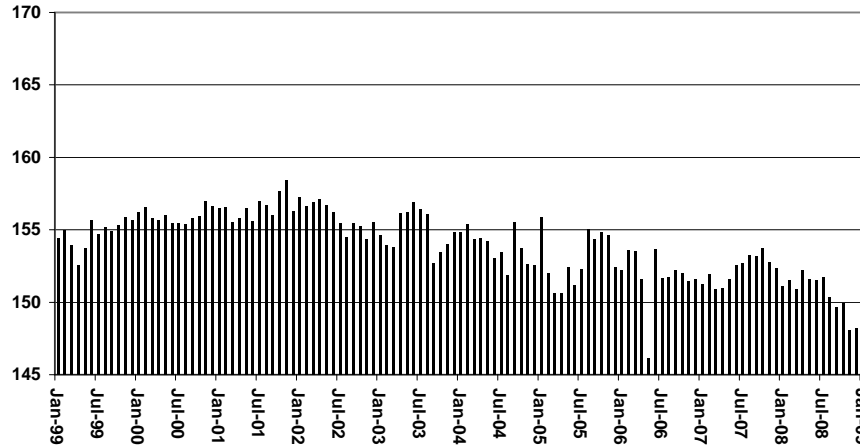


TABLE 4

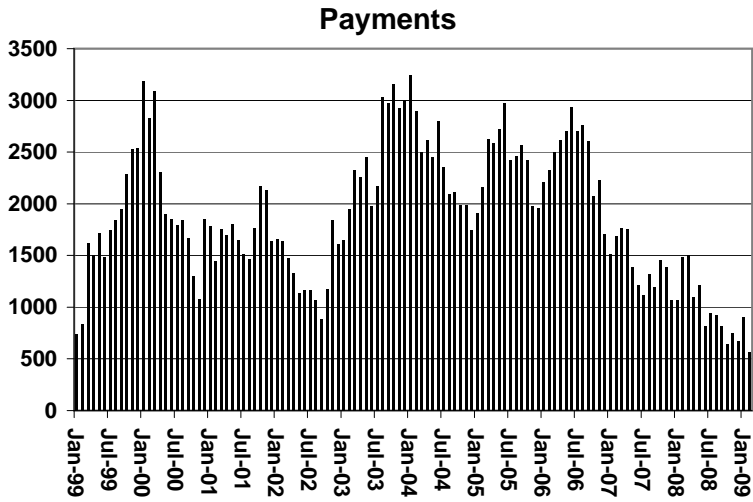
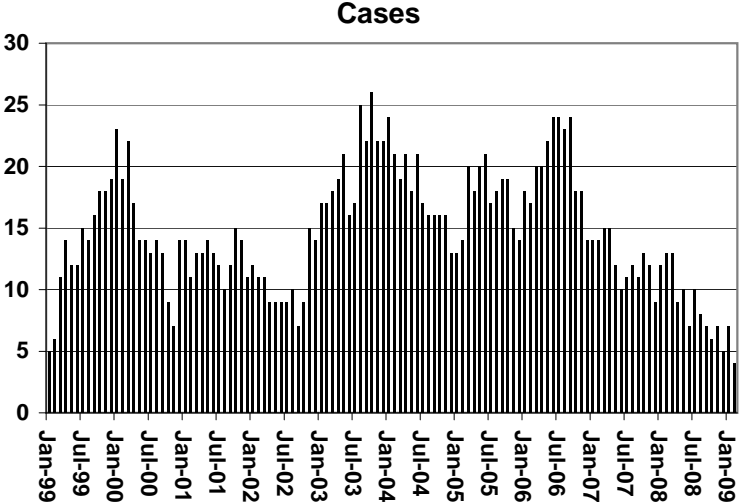
TUBERCULOSIS CONTROL: ARIZONA 1/

	CHANGE FROM											
	FEBRUARY 2009					JANUARY 2009			FEBRUARY 2008			
	NUMBER OF CASES	PERSONS (RECIP.)	TOTAL PAYMENTS	AVERAGE PAYMENT/ CASE	AVERAGE PAYMENT/ RECIP.	NUMBER OF CASES	PERSONS (RECIP.)	TOTAL PAYMENTS	NUMBER OF CASES	PERSONS (RECIP.)	TOTAL PAYMENTS	
ARIZONA	4	4	562	140.50	140.50	(3)	(3)	(343)	(9)	(9)	(927)	
DISTRICT I												
MARICOPA	3	3	389	129.67	129.67	(3)	(3)	(343)	(9)	(9)	(992)	
DISTRICT II												
PIMA	0	0	0	0.00	0.00	0	0	0	0	0	0	
DISTRICT III	0	0	0	0	0.00	0	0	0	(1)	(1)	(108)	
APACHE	0	0	0	0.00	0.00	0	0	0	0	0	0	
COCONINO	0	0	0	0.00	0.00	0	0	0	0	0	0	
NAVAJO	0	0	0	0.00	0.00	0	0	0	0	0	0	
YAVAPAI	0	0	0	0.00	0.00	0	0	0	(1)	(1)	(108)	
DISTRICT IV	1	1	173	173.00	173.00	0	0	0	1	1	173	
LA PAZ	0	0	0	0.00	0.00	0	0	0	0	0	0	
MOHAVE	0	0	0	0.00	0.00	0	0	0	0	0	0	
YUMA	1	1	173	173.00	173.00	0	0	0	1	1	173	
DISTRICT V	0	0	0	0.00	0.00	0	0	0	0	0	0	
GILA	0	0	0	0.00	0.00	0	0	0	0	0	0	
PINAL	0	0	0	0.00	0.00	0	0	0	0	0	0	
DISTRICT VI	0	0	0	0.00	0.00	0	0	0	0	0	0	
COCHISE	0	0	0	0.00	0.00	0	0	0	0	0	0	
GRAHAM	0	0	0	0.00	0.00	0	0	0	0	0	0	
GREENLEE	0	0	0	0.00	0.00	0	0	0	0	0	0	
SANTA CRUZ	0	0	0	0.00	0.00	0	0	0	0	0	0	

1/EXCLUDES: PRIOR MONTH NET TOTALS OF : 0 CASES; 0 RECIPIENTS; \$0.

CHART 4

TUBERCULOSIS CONTROL PROGRAM COMPARISON OF CASES, PAYMENTS & AVERAGE PAYMENTS FOR 1999, 2000, 2001, 2002, 2003, 2004, 2005, 2006, 2007, & 2008



Average Payment Per Case

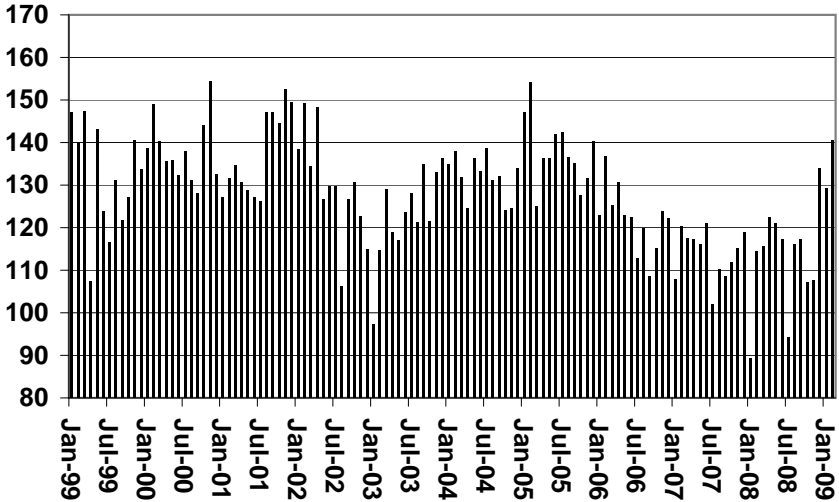


TABLE 6

SUPPLEMENTAL NUTRITION ASSISTANCE PROGRAM: ARIZONA 1

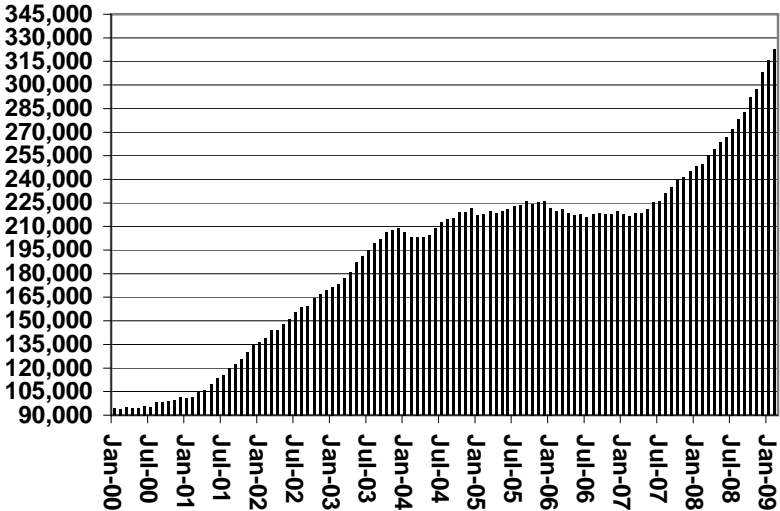
	CHANGE FROM										
	FEBRUARY 2009					JANUARY 2009			FEBRUARY 2008		
	HOUSEHOLDS	PERSONS	TOTAL COUPON ISSUANCE	AVERAGE ALLOT./ HOUSEHOLD	AVERAGE ALLOT./ PERSON	HOUSEHOLDS	PERSONS	TOTAL COUPON ISSUANCE	HOUSEHOLDS	PERSONS	TOTAL COUPON ISSUANCE
ARIZONA	322,578	772,534	86,458,148	268.02	111.92	6,846	15,574	1,526,249	72,953	165,971	25,463,635
DISTRICT I											
MARICOPA	167,483	403,566	46,170,161	275.67	114.41	4,328	9,717	990,280	42,696	99,097	14,944,882
DISTRICT II											
PIMA	56,033	125,039	14,034,174	250.46	112.24	1,137	2,450	232,700	11,486	23,287	3,786,711
DISTRICT III											
APACHE	6,967	20,793	2,212,904	317.63	106.43	78	350	37,085	705	1,496	333,821
COCONINO	7,072	19,902	2,111,959	298.64	106.12	233	485	67,110	1,162	2,878	477,357
NAVAJO	11,468	31,626	3,357,717	292.79	106.17	160	528	57,998	1,616	4,061	661,587
YAVAPAI	9,971	20,685	2,284,340	229.10	110.43	367	868	83,790	2,994	6,439	896,891
DISTRICT IV											
LA PAZ	28,016	64,441	6,849,891	244.50	106.30	2	(422)	(82,782)	5,259	11,230	1,739,635
MOHAVE	1,583	3,341	383,759	242.43	114.86	27	66	4,261	271	489	88,595
YUMA	15,007	31,008	3,520,629	234.60	113.54	305	647	70,819	3,238	6,263	969,191
	11,426	30,092	2,945,503	257.79	97.88	(330)	(1,135)	(157,862)	1,750	4,478	681,849
DISTRICT V											
GILA	20,957	52,117	5,815,066	277.48	111.58	405	1,129	119,944	4,563	11,641	1,707,534
PINAL	4,388	9,928	1,124,832	256.34	113.30	67	175	23,320	758	1,504	265,030
	16,569	42,189	4,690,234	283.07	111.17	338	954	96,624	3,805	10,137	1,442,504
DISTRICT VI											
COCHISE	14,611	34,365	3,621,936	247.89	105.40	136	469	20,124	2,472	5,842	915,217
GRAHAM	8,321	18,415	1,959,690	235.51	106.42	2	152	587	1,167	2,504	426,959
GREENLEE	2,514	5,944	646,964	257.34	108.84	70	162	12,185	396	862	159,776
SANTA CRUZ	353	788	81,707	231.46	103.69	12	50	1,866	116	302	31,886
	3,423	9,218	933,575	272.74	101.28	52	105	5,486	793	2,174	296,596

1/EXCLUDES: PRIOR MONTH NET TOTALS OF : 10,781 CASES; 28,865 RECIPIENTS; \$1,658,559.
 AGED CANCELATIONS: 0 CASES; 0 RECIPIENTS; 0.
 SNAP COUPON CONVERSIONS: 0 CASES; 0 RECIPIENTS; \$0.
 SNAP REINSTATED: 0 CASES; \$0.
 SNAP ZERO PAY: 9,700 CASES; 39,549 RECIPIENTS.

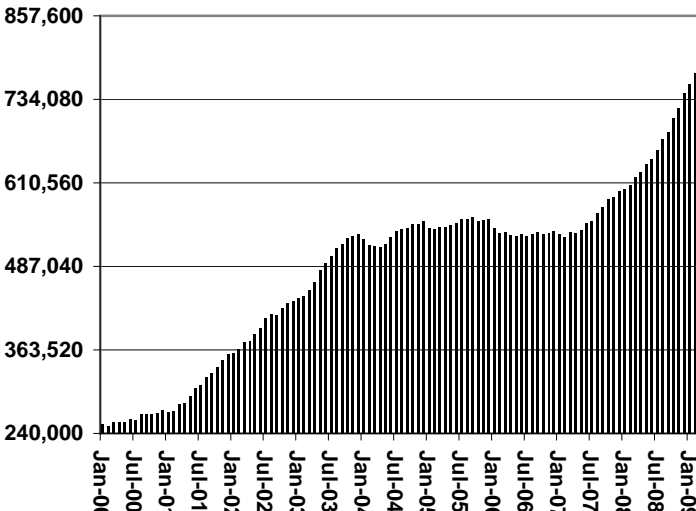
CHART 6

SUPPLEMENTAL NUTRITION ASSISTANCE PROGRAM (SNAP) COMPARISON OF HOUSEHOLDS, RECIPIENTS, PAYMENTS & AVERAGE PAYMENTS FOR 1999, 2000, 2001, 2002, 2003, 2004, 2005, 2006, 2007, & 2008

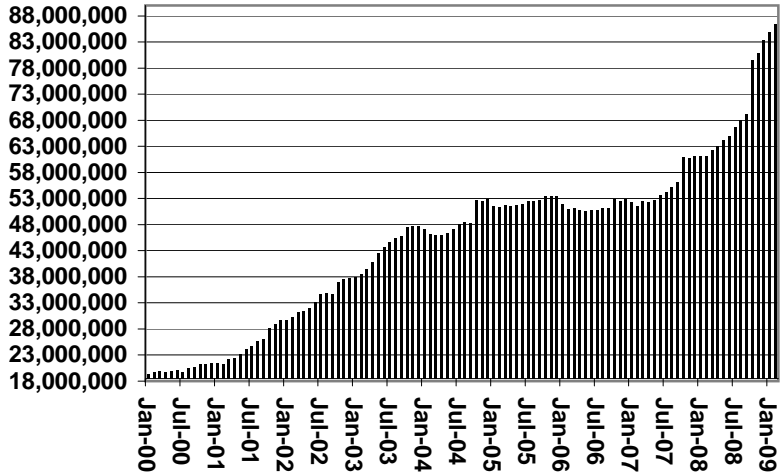
Households



Recipients



Payments



Average Payment Per Household

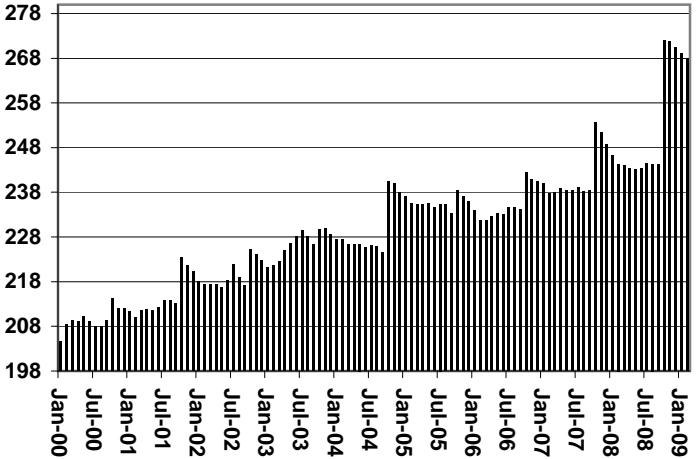


TABLE 7A
MEDICAL ASSISTANCE PROGRAM
RECIPIENTS

FEBRUARY 2009

	SOBRA WOMAN 133% FPL	SOBRA CHILD	ADULT W/O CHILD 100% FPL	FOSTER CARE	1931 36% FPL	FEDERAL EMERGENCY SERVICES	INFANTS	ADULT W/O CHILD 40% FPL	MEDICAL W/SPEND DOWN	SOBRA WOMAN 100% FPL	SOBRA CHILD 100% FPL	TRANSITIONAL MEDICAL T1 - T4	1931 100% FPL	YATI	OTHER	TOTAL CASES
ARIZONA	11,391	64,868	43,435	11,020	304,754	86,924	48,365	110,696	5,673	3,680	184,498	43,424	90,962	292	26,157	1,036,139
DISTRICT I																
MARICOPA	5,871	36,499	19,208	5,616	166,666	67,512	28,668	51,816	2,920	1,875	105,274	20,572	43,871	152	13,039	569,559
DISTRICT II																
PIMA	1,804	9,902	8,300	3,106	45,576	10,609	6,788	20,018	845	569	27,808	7,361	15,695	85	4,667	163,133
DISTRICT III																
APACHE	213	1,361	1,029	41	10,895	103	966	4,136	109	86	3,871	929	2,393	3	392	26,527
COCONINO	353	1,448	1,258	134	7,811	559	1,145	3,318	145	112	4,104	1,075	2,407	6	404	24,279
NAVAJO	395	2,324	1,521	134	11,897	370	1,381	5,147	203	158	5,087	1,369	3,344	5	608	33,943
YAVAPAI	439	1,890	2,010	434	6,760	1,589	1,248	3,635	280	122	4,861	1,212	3,124	14	1,108	28,726
DISTRICT IV																
LA PAZ	36	234	226	8	1,255	170	171	658	41	11	639	151	354	0	165	4,119
MOHAVE	449	2,139	2,286	266	10,962	895	1,561	5,980	430	161	7,164	1,874	4,371	3	1,394	39,935
YUMA	578	2,398	2,239	264	9,902	1,793	1,938	3,329	216	185	7,890	4,455	4,858	2	1,351	41,398
DISTRICT V																
GILA	151	659	588	80	4,243	163	495	2,194	85	42	1,839	376	1,140	0	339	12,394
PINAL	577	3,723	2,057	568	16,359	1,786	2,212	5,999	189	182	8,228	1,948	4,487	16	1,255	49,586
DISTRICT VI																
COCHISE	248	1,192	1,430	258	6,551	699	871	2,553	122	75	3,668	1,078	2,442	6	804	21,997
GRAHAM	136	476	427	76	2,424	55	398	1,018	28	36	1,153	405	784	0	151	7,567
GREENLEE	25	57	53	6	299	10	65	136	2	7	158	18	85	0	20	941
SANTA CRUZ	116	566	803	29	3,154	611	458	759	58	59	2,754	601	1,607	0	460	12,035

TABLE 7B
MEDICAL ASSISTANCE PROGRAM
RECIPIENTS

CHANGE FROM
JANUARY 2009

	SOBRA WOMAN 133% FPL	SOBRA CHILD	ADULT W/O CHILD 100% FPL	FOSTER CARE	1931 36% FPL	FEDERAL EMERGENCY SERVICES	INFANTS	ADULT W/O CHILD 40% FPL	MEDICAL W/SPEND DOWN	SOBRA WOMAN 100% FPL	SOBRA CHILD 100% FPL	TRANSITIONAL MEDICAL T1 - T4	1931 100% FPL	YATI	OTHER	TOTAL CASES
ARIZONA	(174)	(967)	283	8	4,951	973	(681)	1,521	(100)	78	2,268	(311)	1,827	5	130	9,811
DISTRICT I																
MARICOPA	(111)	(598)	135	2	3,526	820	(498)	930	(42)	37	1,371	(103)	1,074	6	(17)	6,532
DISTRICT II																
PIMA	(28)	(135)	(74)	8	567	101	(122)	282	(66)	9	375	(350)	331	(7)	41	932
DISTRICT III																
APACHE	(11)	(60)	103	0	218	7	14	(27)	9	0	(6)	(92)	10	0	9	174
COCONINO	(4)	(23)	38	(2)	68	16	(1)	92	(18)	2	73	(92)	0	1	10	160
NAVAJO	(11)	(38)	42	1	127	11	(9)	(23)	33	28	184	(86)	183	1	(1)	442
YAVAPAI	9	33	60	(6)	124	77	(19)	71	(48)	13	182	(82)	133	1	21	569
DISTRICT IV																
LA PAZ	7	4	2	0	13	6	(15)	4	8	1	17	(14)	3	0	1	37
MOHAVE	(11)	(13)	3	1	241	1	2	161	24	9	92	6	91	0	1	608
YUMA	(16)	(62)	(80)	(4)	(599)	(93)	(12)	(86)	12	(2)	(329)	733	(178)	1	44	(671)
DISTRICT V																
GILA	17	(48)	(11)	9	332	0	(9)	79	(4)	(22)	253	(160)	101	2	5	544
PINAL	(1)	(7)	2	3	176	9	4	22	15	(12)	57	(57)	25	0	6	242
	18	(41)	(13)	6	156	(9)	(13)	57	(19)	(10)	196	(103)	76	2	(1)	302
DISTRICT VI																
COCHISE	(4)	(33)	9	1	173	9	(29)	(27)	(8)	(11)	(13)	(50)	22	0	5	44
GRAHAM	(10)	15	20	0	100	3	1	28	(1)	5	45	(16)	25	0	(7)	208
GREENLEE	(1)	10	6	(1)	26	0	10	14	(1)	1	(14)	(8)	3	0	0	45
SANTA CRUZ	0	(19)	30	(1)	35	15	6	23	2	8	38	3	29	0	18	187

TABLE 7C
MEDICAL ASSISTANCE PROGRAM
RECIPIENTS

CHANGE FROM
FEBRUARY 2008

	SOBRA WOMAN 133% FPL	SOBRA CHILD	ADULT W/O CHILD 100% FPL	FOSTER CARE	1931 36% FPL	FEDERAL EMERGENCY SERVICES	INFANTS	ADULT W/O CHILD 40% FPL	MEDICAL W/SPEND DOWN	SOBRA WOMAN 100% FPL	SOBRA CHILD 100% FPL	TRANSITIONAL MEDICAL T1 - T4	3E 1931 100% FPL	YATI	OTHER	TOTAL CASES
ARIZONA	(139)	2,799	5,094	1,229	44,930	2,053	(1,682)	17,206	592	402	22,819	(523)	13,796	62	3,342	111,980
DISTRICT I																
MARICOPA	(59)	1,789	2,798	728	30,343	1,887	(1,400)	10,457	232	213	14,883	(99)	7,822	38	1,820	71,452
DISTRICT II																
PIMA	42	376	743	316	5,033	110	(292)	2,762	52	16	2,392	231	1,588	13	623	14,005
DISTRICT III																
APACHE	(30)	37	169	4	489	(2)	11	(136)	48	(1)	180	(59)	157	2	30	899
COCONINO	(12)	38	50	19	502	49	(42)	227	50	21	537	(3)	337	(4)	49	1,818
NAVAJO	30	282	240	20	632	38	(15)	360	31	52	705	35	538	3	45	2,996
YAVAPAI	3	103	259	9	1,187	(4)	(105)	672	80	11	759	(100)	694	4	155	3,727
DISTRICT IV																
LA PAZ	0	2	13	(12)	64	(20)	(9)	77	2	(5)	59	(66)	31	0	13	149
MOHAVE	(92)	106	267	41	1,494	(7)	24	1,065	132	4	762	33	683	1	147	4,660
YUMA	6	(121)	114	21	750	(176)	87	218	22	16	256	148	381	1	149	1,872
DISTRICT V																
GILA	17	(56)	29	1	340	30	27	212	0	7	320	(141)	169	(2)	39	992
PINAL	(58)	44	185	61	2,774	77	(10)	890	(48)	31	1,393	(109)	863	7	122	6,222
DISTRICT VI																
COCHISE	0	146	76	9	394	6	8	158	(20)	3	116	(127)	211	0	65	1,045
GRAHAM	5	40	26	17	350	(16)	2	166	12	9	85	(86)	144	(1)	24	777
GREENLEE	(1)	14	15	(5)	14	3	7	34	(6)	7	41	(46)	18	0	2	97
SANTA CRUZ	10	(1)	110	0	564	78	25	44	5	18	331	(134)	160	0	59	1,269

CHART 7

MEDICAL ASSISTANCE PROGRAM

COMPARISON OF RECIPIENTS

FOR 1999, 2000, 2001, 2002, 2003, 2004, 2005, 2006, 2007, & 2008

Total Recipients

