



---

DEPARTMENT OF ECONOMIC SECURITY

---

*Your Partner For A Stronger Arizona*

State of Arizona

Department of Economic Security

Family Assistance Administration

Statistical Bulletin

March, 2009

Phone: (602) 542-3678

<http://www.azdes.gov/faa/Statistics.asp>

\*\*\*\* STATISTICAL BULLETIN \*\*\*\*  
ARIZONA DEPARTMENT OF ECONOMIC SECURITY  
FAMILY ASSISTANCE ADMINISTRATION  
BOX 6123, PHOENIX, ARIZONA 85005  
PHONE (602) 542-3678

MARCH 2009

THIS ISSUE OF THE STATISTICAL BULLETIN COMPARES MARCH 2009 DATA FOR EACH OF THE INDICATED PROGRAMS WITH THE INFORMATION FOR FEBRUARY 2009 AND MARCH 2008. STATEWIDE SUMMARIES OF ACTIVITY WITHIN EACH OF THE SPECIFIC PROGRAMS FOR THIS REPORT PERIOD ARE DISCUSSED BELOW. THE TABLES COMPARE CURRENT AND PRIOR MONTH DATA. DISTRICT AND COUNTY COMPARISONS ARE PROVIDED WITHIN THIS BULLETIN

CASH ASSISTANCE (CA)

COMPARING TO FEBRUARY 2009, MARCH 2009 CASES DECREASED BY 552 (1.48%) TO 36,650. RECIPIENTS DECREASED BY 1,131 (1.42%) TO 78,503. PAYMENTS DECREASED BY \$1,833,487 (18.68%) TO \$7,981,859. AVERAGE PAYMENT PER CASE DECREASED BY \$46.05 (17.45%) TO \$217.79. PAYMENT PER RECIPIENT DECREASED BY \$21.58 (17.51%) TO \$101.68.

COMPARING TO MARCH 2008, MARCH 2009 CASES INCREASED BY 1,607 (4.59%). RECIPIENTS INCREASED BY 4,224 (5.69%). TOTAL PAYMENTS DECREASED BY \$1,316,211 (14.16%). THE AVERAGE PAYMENT PER CASE DECREASED BY \$47.54 (17.92%). THE AVERAGE PAYMENT PER RECIPIENT DECREASED BY \$23.50 (17.78%).

CASH ASSISTANCE UNEMPLOYED PARENT PROGRAM (CA-UP)

COMPARING TO FEBRUARY 2009, MARCH 2009 CASES DECREASED BY 5 (0.33%) TO 1,526. RECIPIENTS DECREASED BY 20 (0.37%) TO 5,428. PAYMENTS DECREASED BY \$100,838 (18.77%) TO \$436,487. AVERAGE PAYMENT PER CASE DECREASED BY \$64.93 (18.50%) TO \$286.03. PAYMENT PER RECIPIENT DECREASED BY \$18.22 (18.47%) TO \$80.41.

COMPARING TO MARCH 2008, MARCH 2009 CASES INCREASED BY 746 (95.64%). RECIPIENTS INCREASED BY 2,599 (91.87%). TOTAL PAYMENTS INCREASED BY \$167,640 (62.36%). THE AVERAGE PAYMENT PER CASE DECREASED BY \$58.65 (17.02%). THE AVERAGE PAYMENT PER RECIPIENT DECREASED BY \$14.62 (15.39%).

CASH ASSISTANCE WITH GRANT UNDER \$100 (CA-MOE)

COMPARING TO FEBRUARY 2009, MARCH 2009 CASES INCREASED BY 277 (37.28%) TO 1,020. RECIPIENTS INCREASED BY 541 (35.38%) TO 2,070. PAYMENTS INCREASED BY \$16,371 (30.10%) TO \$70,767. AVERAGE PAYMENT PER CASE DECREASED BY \$3.83 (5.23%) TO \$69.38. AVERAGE PAYMENT PER RECIPIENT DECREASED BY \$1.39 (3.91%) TO \$34.19.

COMPARING TO MARCH 2008, MARCH 2009 CASES INCREASED BY 365 (55.73%). RECIPIENTS INCREASED BY 773 (59.60%). TOTAL PAYMENTS INCREASED BY \$23,214 (48.82%). THE AVERAGE PAYMENT PER CASE DECREASED BY \$3.22 (4.44%). THE AVERAGE PAYMENT PER RECIPIENT DECREASED BY \$2.47 (6.74%).

CASH ASSISTANCE UNEMPLOYED PARENT PROGRAM WITH GRANT UNDER \$100 (CA-UP-MOE) NEW PROGRAM STARTING 7/01

COMPARING TO FEBRUARY 2009, MARCH 2009 CASES INCREASED BY 11 (39.29%) TO 39. RECIPIENTS INCREASED BY 44 (58.67%) TO 119. PAYMENTS INCREASED BY \$541 (39.03%) TO \$1,927. AVERAGE PAYMENT PER CASE DECREASED BY \$0.09 (0.18%) TO \$49.41. PAYMENT PER RECIPIENT DECREASED BY \$2.29 (12.39%) TO \$16.19.

COMPARING TO MARCH 2008, MARCH 2009 CASES INCREASED BY 29 (290.00%). RECIPIENTS INCREASED BY 94 (6.78%). TOTAL PAYMENTS INCREASED BY \$1,404 (268.45%). THE AVERAGE PAYMENT PER CASE DECREASED BY \$2.89 (5.53%). THE AVERAGE PAYMENT PER RECIPIENT DECREASED BY \$4.73 (22.61%).

TUBERCULOSIS CONTROL PROGRAM (TC)

COMPARING TO FEBRUARY 2009, MARCH 2009 CASES DECREASED BY 1 (25.00%) TO 3. RECIPIENTS DECREASED BY 1 (25.00%) TO 3. PAYMENTS DECREASED BY \$108 (19.22%) TO \$454. AVERAGE PAYMENT PER CASE INCREASED BY \$10.83 (7.71%) TO \$151.33. AVERAGE PAYMENT PER RECIPIENT INCREASED BY \$10.83 (7.71%) TO \$151.33.

COMPARING TO MARCH 2008, MARCH 2009 CASES DECREASED BY 10 (76.92%). RECIPIENTS DECREASED BY 10 (76.92%). TOTAL PAYMENTS DECREASED BY \$1,050 (69.81%). THE AVERAGE PAYMENT PER CASE INCREASED BY \$35.64 (30.80%). THE AVERAGE PAYMENT PER RECIPIENT INCREASED BY \$35.64 (30.80%).

SUPPLEMENTAL NUTRITION ASSISTANCE PROGRAM (SNAP)

COMPARING TO FEBRUARY 2009, MARCH 2009 SUPPLEMENTAL NUTRITION ASSISTANCE HOUSEHOLDS INCREASED BY 8,815 (2.73%) TO 331,393. PERSONS RECEIVING SUPPLEMENTAL NUTRITION ASSISTANCE INCREASED BY 18,710 (2.42%) TO 791,244. TOTAL COUPON ISSUANCE INCREASED BY \$2,852,265 (3.30%) TO \$89,310,413. THE AVERAGE HOUSEHOLD ALLOTMENT INCREASED BY \$1.48 (0.55%) TO \$269.50. THE AVERAGE ALLOTMENT PER PERSON INCREASED BY \$0.95 (0.85%) TO \$112.87.

COMPARING TO MARCH 2008, MARCH 2009 SUPPLEMENTAL NUTRITION ASSISTANCE HOUSEHOLDS INCREASED BY 76,181 (29.85%). PERSONS RECEIVING SUPPLEMENTAL NUTRITION ASSISTANCE INCREASED BY 172,797 (27.94%). TOTAL COUPON ISSUANCE INCREASED BY \$27,040,737 (43.43%). THE AVERAGE ALLOTMENT PER HOUSEHOLD INCREASED BY \$25.51 (10.45%). THE AVERAGE ALLOTMENT PER PERSON INCREASED BY \$12.18 (12.10%).

MEDICAL ASSISTANCE PROGRAM (MA) NEW TABLE INCLUDES PROP. 204 CATEGORIES

COMPARING TO FEBRUARY 2009, MARCH 2009 TOTAL RECIPIENTS TOTAL RECIPIENTS INCREASED BY 10,453 (1.01%). SOBRA WOMEN AT 140% FPL INCREASED BY 76 (0.67%). SOBRA CHILDREN DECREASED BY 213 (0.33%). ADULTS W/O CHILD AT 100% INCREASED BY 565 (1.30%). FOSTER CARE INCREASED BY 122 (1.11%). 1931 AT 36% FPL INCREASED BY 5,155 (1.69%). EMERGENCY SERVICES INCREASED BY 825 (0.95%). INFANTS DECREASED BY 286 (0.59%). ADULT W/O CHILD AT 140% INCREASED BY 1,673 (1.51%). MEDICAL W/SPEND DOWN DECREASED BY 3 (0.05%). SOBRA WOMAN AT 100% DECREASED BY 10 (0.27%). SOBRA CHILD AT 100% INCREASED BY 1,815 (0.98%). TRANSITIONAL MEDICAL DECREASED BY 1,019 (2.35%). 1931 AT 100% INCREASED BY 1,879 (2.07%). YATI DECREASED BY 8 (2.74%). ALL OTHER CATEGORIES DECREASED BY 118 (0.45%).

COMPARING TO MARCH 2008, MARCH 2009 TOTAL RECIPIENTS TOTAL RECIPIENTS INCREASED BY 107,682 (11.47%). SOBRA WOMEN AT 140% FPL DECREASED BY 404 (3.40%). SOBRA CHILDREN INCREASED BY 1,762 (2.80%). ADULTS W/O CHILD AT 100% INCREASED BY 4,713 (12.00%). FOSTER CARE INCREASED BY 1,272 (12.89%). 1931 AT 36% FPL INCREASED BY 45,176 (17.06%). EMERGENCY SERVICES INCREASED BY 1,973 (2.30%). INFANTS DECREASED BY 2,349 (4.66%). ADULT W/O CHILD AT 140% INCREASED BY 16,255 (16.91%). MEDICAL W/SPEND DOWN INCREASED BY 296 (5.51%). SOBRA WOMAN AT 100% INCREASED BY 257 (7.53%). SOBRA CHILD AT 100% INCREASED BY 22,255 (13.57%). TRANSITIONAL MEDICAL DECREASED BY 790 (1.83%). 1931 AT 100% INCREASED BY 14,193 (18.05%). YATI INCREASED BY 42 (17.36%). ALL OTHER CATEGORIES INCREASED BY 3,031 (13.17%).

# TANF SUMMARY

## TABLES 1, 1A, 1B, & 1C: ARIZONA 1

	MARCH 2009							CHANGE FROM			MARCH 2008		
	FAMILIES (CASES)	PERSONS (RECIP.)	ADULTS	CHILDREN	TOTAL PAYMENTS	AVERAGE	AVERAGE	FEBRUARY 2009			FAMILIES (CASES)	PERSONS (RECIP.)	TOTAL PAYMENTS
						PAYMENT/ CASE	PAYMENT/ RECIP.	FAMILIES (CASES)	PERSONS (RECIP.)	TOTAL PAYMENTS			
ARIZONA	39,235	86,120	21,301	64,819	8,491,040	216.41	98.60	(269)	(566)	(1,917,413)	2,747	7,690	(1,123,953)
DISTRICT I													
MARICOPA	23,174	51,677	11,965	39,712	5,003,629	215.92	96.83	(94)	(231)	(1,197,765)	2,781	7,166	(419,785)
DISTRICT II													
PIMA	6,720	13,977	3,699	10,278	1,424,204	211.94	101.90	(123)	(302)	(343,438)	(161)	(220)	(361,175)
DISTRICT III													
APACHE	64	127	34	93	12,680	198.13	99.84	(11)	(34)	(6,496)	(44)	(89)	(14,638)
COCONINO	255	538	139	399	52,176	204.61	96.98	(12)	(35)	(12,848)	18	52	(5,784)
NAVAJO	1,372	3,469	1,035	2,434	365,539	266.43	105.37	19	87	(12,183)	70	275	4,593
YAVAPAI	767	1,524	366	1,158	152,466	198.78	100.04	20	40	(30,880)	83	203	(16,911)
DISTRICT IV													
LA PAZ	188	404	125	279	39,683	211.08	98.23	(9)	(18)	(9,394)	(47)	(127)	(20,588)
MOHAVE	1,353	2,881	845	2,036	284,119	209.99	98.62	(17)	(26)	(67,558)	(30)	23	(74,196)
YUMA	1,003	2,154	456	1,698	210,519	209.89	97.73	(30)	(46)	(52,896)	(48)	(81)	(62,610)
DISTRICT V													
GILA	714	1,535	553	982	174,918	244.98	113.95	3	14	(10,050)	38	141	(1,846)
PINAL	1,992	4,476	1,196	3,280	421,891	211.79	94.26	15	50	(93,430)	92	239	(81,584)
DISTRICT VI													
COCHISE	955	1,929	499	1,430	200,308	209.75	103.84	(28)	(60)	(53,055)	(24)	(12)	(51,194)
GRAHAM	374	764	239	525	84,174	225.06	110.18	9	26	(8,529)	1	51	(8,243)
GREENLEE	35	80	23	57	8,059	230.26	100.74	2	7	(922)	(5)	(3)	(2,316)
SANTA CRUZ	269	585	127	458	56,675	210.69	96.88	(13)	(38)	(17,969)	23	72	(7,676)

1/EXCLUDES: PRIOR MONTH NET TOTALS OF 1,868 CASES; 4,604 RECIPIENTS; \$420,240.  
 1/GRANT DIVERSION TOTALS OF: 273 CASES; \$250,771.  
 ZERO PAY TOTALS OF 774 CASES; 2,559 RECIPIENTS.  
 RRP 615 CASES; 1,013 RECIPIENTS; \$166,055.

	CURRENT MO. CASES	CURRENT MO. RECIP.	CURRENT MO. DOLLARS	PRIOR MO. CASES	PRIOR MO. RECIP	PRIOR MO. DOLLARS
PASQUA/YAQUI	332	966	\$102,662	16	45	4,057
WM APACHE	716	1,992	\$217,948	6	14	969
SALT RIVER	68	247	\$22,192	1	3	46
SAN CARLOS	665	1,454	\$174,130	21	45	5,312
HOPAI	120	341	\$28,121	3	10	225
<b>TOTAL</b>	<b>1,901</b>	<b>5,000</b>	<b>\$545,053</b>	<b>47</b>	<b>117</b>	<b>\$10,609</b>

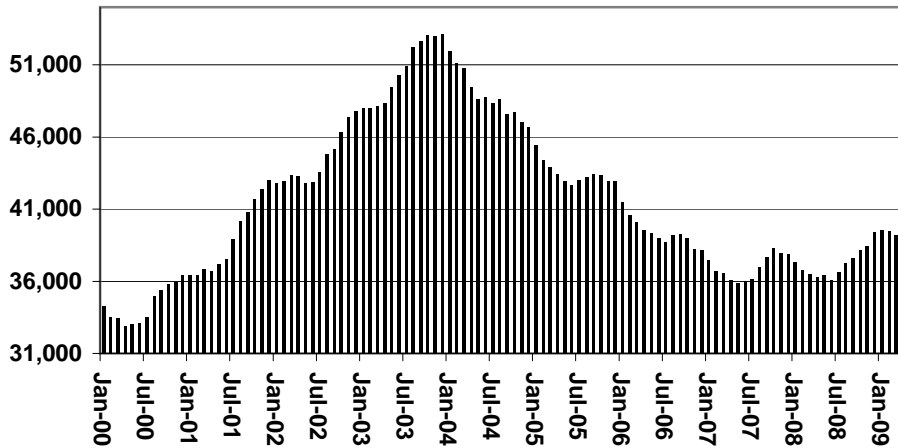
# TANF SUMMARY

TABLES 1, 1A, 1B, & 1C

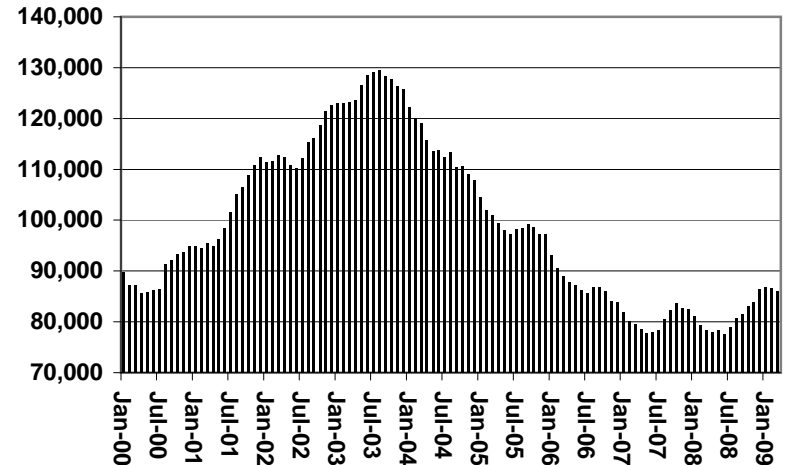
COMPARISON OF CASES, RECIPIENTS, PAYMENTS & AVERAGE PAYMENTS

FOR 2000, 2001, 2002, 2003, 2004, 2005, 2006, 2007, 2008, & 2009

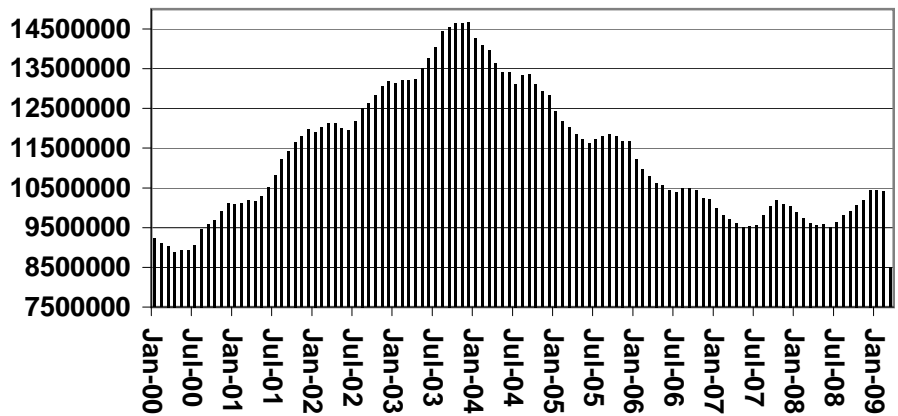
**Cases**



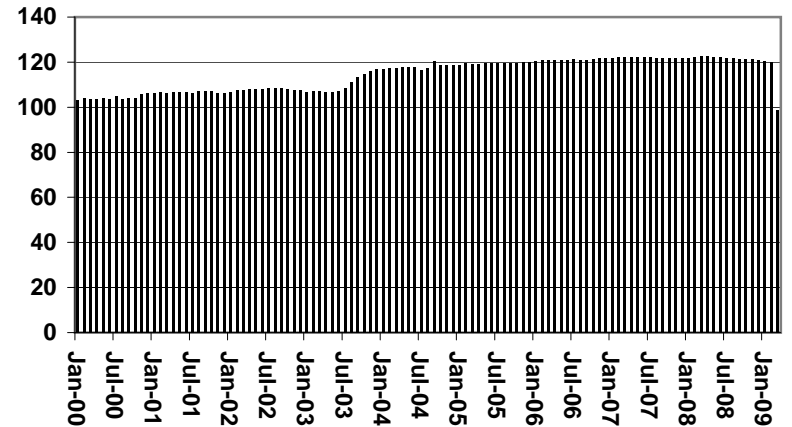
**Recipients**



**Payments**



**Average Payments Per Recipient**



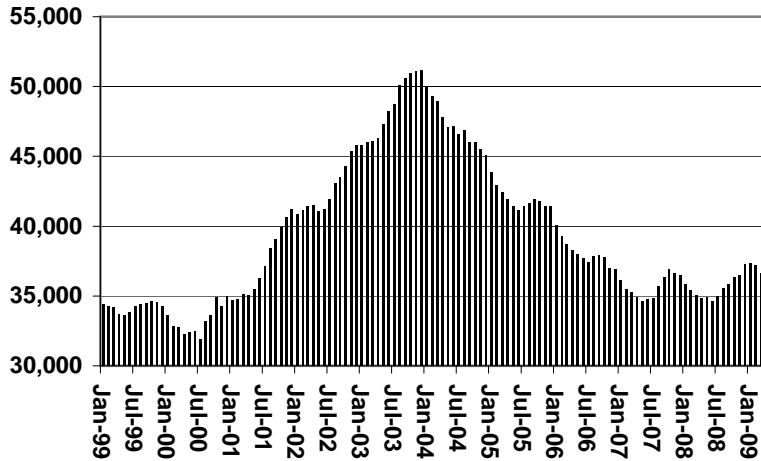


# CHART 1

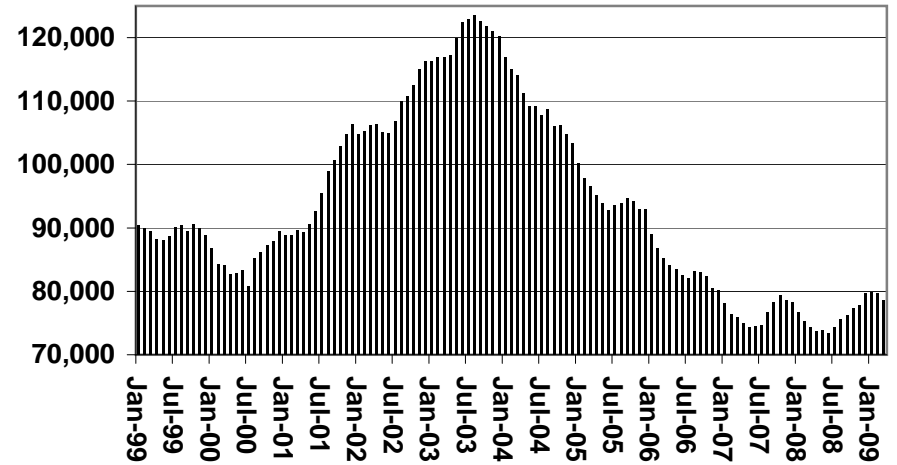
## CASH ASSISTANCE PROGRAM

### COMPARISON OF CASES, RECIPIENTS, PAYMENTS & AVERAGE PAYMENTS FOR 1999, 2000, 2001, 2002, 2003, 2004, 2005, 2006, 2007, & 2008

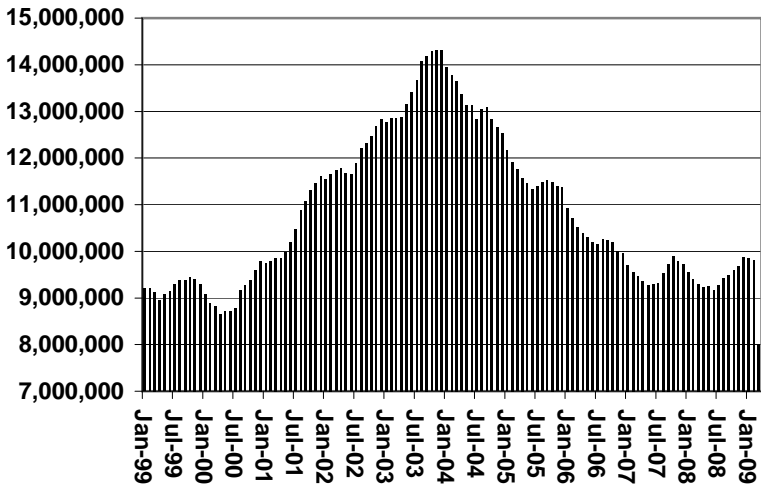
**Cases**



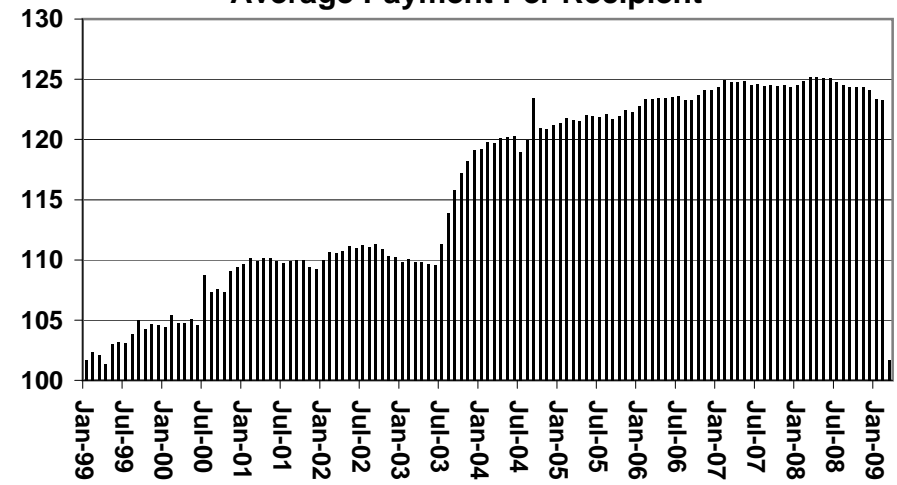
**Recipients**



**Payments**



**Average Payment Per Recipient**



**TABLE 1A  
CA-UP**

**CASH ASSISTANCE UNEMPLOYED PARENT PROGRAM: ARIZONA 1**

	MARCH 2009							CHANGE FROM			MARCH 2008		
	FAMILIES (CASES)	PERSONS (RECIP.)	ADULTS	CHILDREN	TOTAL PAYMENTS	AVERAGE PAYMENT/ CASE	AVERAGE PAYMENT/ RECIP.	FAMILIES (CASES)	PERSONS (RECIP.)	TOTAL PAYMENTS	FAMILIES (CASES)	PERSONS (RECIP.)	TOTAL PAYMENTS
ARIZONA	1,526	5,428	2,131	3,297	436,487	286.03	80.41	(5)	(20)	(100,838)	746	2,599	167,640
DISTRICT I													
MARICOPA	935	3,218	1,118	2,100	263,504	281.82	81.88	7	(11)	(59,814)	554	1,925	134,394
DISTRICT II													
PIMA	274	1,034	455	579	81,590	297.77	78.91	(10)	(22)	(21,941)	141	535	37,179
DISTRICT III													
APACHE	2	6	4	2	550	275.00	91.67	(1)	(5)	(478)	0	(2)	(286)
COCONINO	7	29	12	17	2,259	322.71	77.90	0	1	(248)	5	22	1,743
NAVAJO	55	205	101	104	17,521	318.56	85.47	(14)	(56)	(7,075)	(18)	(106)	(11,365)
YAVAPAI	27	85	35	50	6,328	234.37	74.45	4	20	(386)	18	52	3,176
DISTRICT IV													
LA PAZ	5	19	10	9	1,431	286.20	75.32	(4)	(18)	(1,903)	(5)	(24)	(1,954)
MOHAVE	45	170	89	81	13,306	295.69	78.27	(3)	(8)	(3,361)	3	5	(1,844)
YUMA	21	74	31	43	6,122	291.52	82.73	6	24	746	9	33	2,553
DISTRICT V													
GILA	7	27	14	13	1,874	267.71	69.41	(1)	(4)	(1,063)	(28)	(85)	(9,130)
PINAL	109	435	200	235	31,830	292.02	73.17	7	42	(4,049)	53	201	11,811
DISTRICT VI													
COCHISE	25	75	36	39	5,924	236.96	78.99	(1)	(4)	(2,516)	11	29	980
GRAHAM	9	32	18	14	2,646	294.00	82.69	3	11	394	1	4	(178)
GREENLEE	2	8	4	4	670	335.00	83.75	1	4	252	0	2	(24)
SANTA CRUZ	3	11	4	7	932	310.67	84.73	1	6	604	2	8	585

1/EXCLUDES: PRIOR MONTH NET TOTALS OF: 156 CASES; 595 RECIPIENTS; \$68,418.  
GRANT DIVERSION TOTALS OF: 0 CASES; \$0.  
ZERO PAY TOTALS OF 62 CASES; 254 RECIPIENTS.

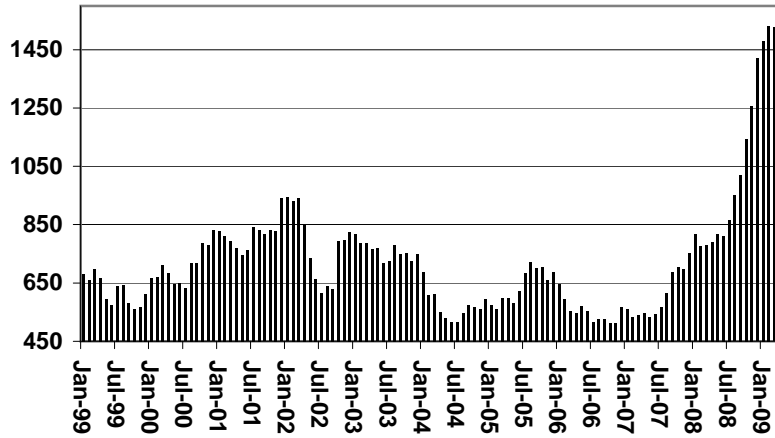
	CURRENT MO. CASES	CURRENT MO. RECIP.	CURRENT MO. DOLLARS	PRIOR MO. CASES	PRIOR MO. RECIP.	PRIOR MO. DOLLARS
PASQUAYUAQUI	16	68	6,124	0	0	0
WM APACHE	30	118	10,811	1	3	23
SALT RIVER	0	0	0	0	0	0
SAN CARLOS	0	0	0	0	0	0
HOPÍ	0	0	0	0	0	0
<b>TOTAL</b>	<b>46</b>	<b>186</b>	<b>16,935</b>	<b>1</b>	<b>3</b>	<b>23</b>

CASES WITH GRANT UNDER \$100 (SEE TABLE 1C).

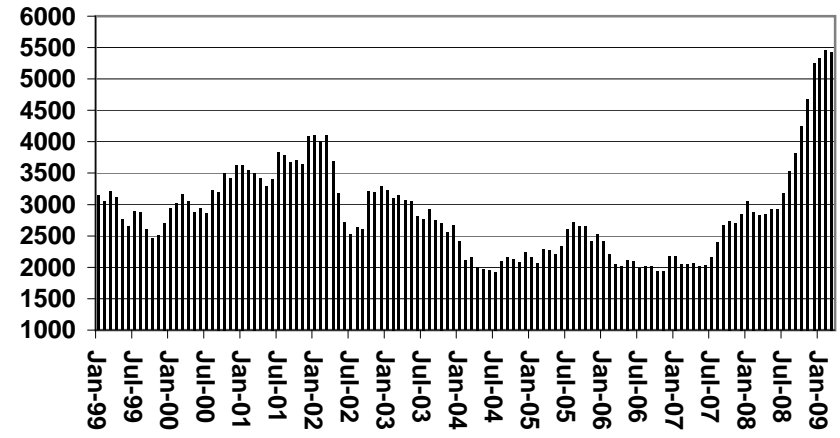
# CHART 1A

## CASH ASSISTANCE UNEMPLOYED PARENT PROGRAM COMPARISON OF CASES, RECIPIENTS, PAYMENTS & AVERAGE PAYMENTS FOR 1999, 2000, 2001, 2002, 2003, 2004, 2005, 2006, 2007, & 2008

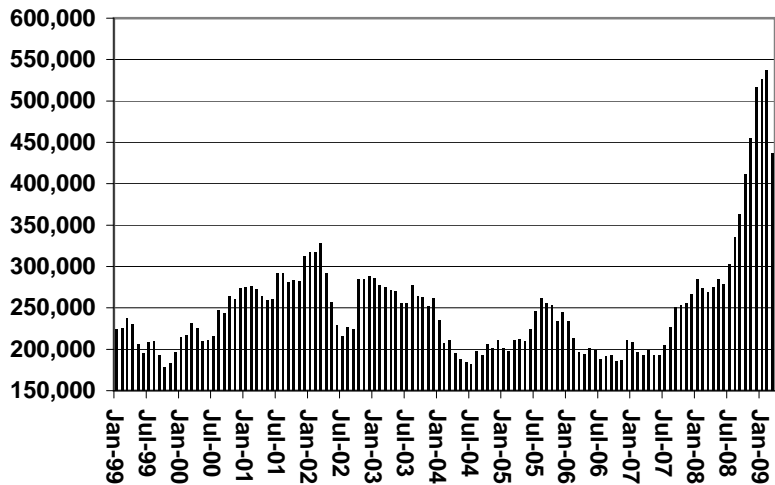
### Cases



### Recipients



### Payments



### Average Payment Per Recipient

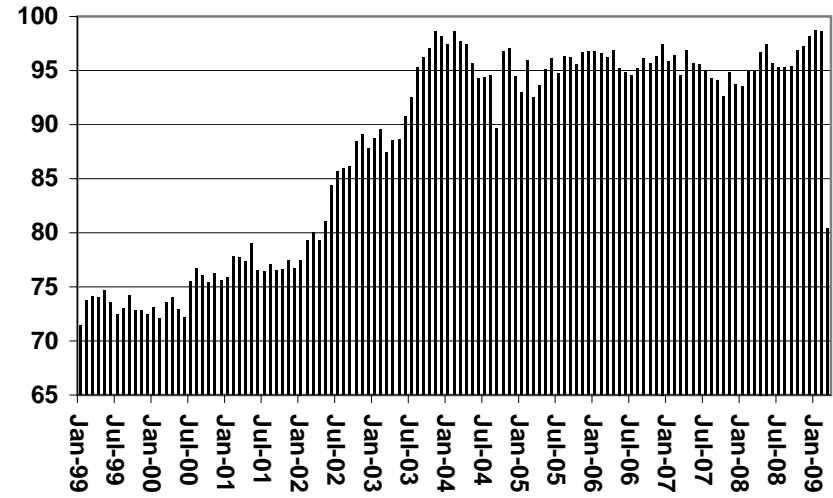




TABLE 1B 1/

CASH ASSISTANCE: ARIZONA  
 CASES WITH GRANT UNDER \$100

	CHANGE FROM												
	MARCH 2009							FEBRUARY 2009			MARCH 2008		
	FAMILIES (CASES)	PERSONS (RECIP.)	ADULTS	CHILDREN	TOTAL PAYMENTS	AVERAGE PAYMENT/ CASE	AVERAGE PAYMENT/ RECIP.	FAMILIES (CASES)	PERSONS (RECIP.)	TOTAL PAYMENTS	FAMILIES (CASES)	PERSONS (RECIP.)	TOTAL PAYMENTS
ARIZONA	1,020	2,070	519	1,551	70,767	69.38	34.19	277	541	16,371	365	773	23,214
DISTRICT I													
MARICOPA	626	1,288	295	993	42,454	67.82	32.96	197	401	13,954	288	614	19,142
DISTRICT II													
PIMA	153	297	86	211	10,829	70.78	36.46	16	38	(383)	20	32	1,189
DISTRICT III													
APACHE	5	13	3	10	336	67.20	25.85	2	4	170	2	6	37
COCONINO	5	12	3	9	343	68.60	28.58	0	(4)	(165)	2	7	173
NAVAJO	13	23	7	16	1,166	89.69	50.70	4	8	324	6	12	667
YAVAPAI	37	68	19	49	2,501	67.59	36.78	11	22	580	19	33	1,138
DISTRICT IV													
LA PAZ	3	6	3	3	311	103.67	51.83	(1)	(4)	(49)	(4)	(7)	(136)
MOHAVE	44	86	27	59	2,948	67.00	34.28	3	0	(284)	9	20	200
YUMA	24	44	15	29	2,084	86.83	47.36	2	(3)	(175)	0	(7)	388
DISTRICT V													
GILA	11	19	4	15	754	68.55	39.68	4	5	392	1	4	(146)
PINAL	52	118	33	85	3,553	68.33	30.11	22	40	1,044	15	35	265
DISTRICT VI													
COCHISE	31	59	13	46	2,312	74.58	39.19	12	24	614	8	19	279
GRAHAM	7	15	5	10	469	67.00	31.27	4	8	150	(1)	3	15
GREENLEE	0	0	0	0	0	0.00	0.00	(1)	(1)	(70)	(1)	(1)	(99)
SANTA CRUZ	9	22	6	16	707	78.56	32.14	2	3	269	1	3	102

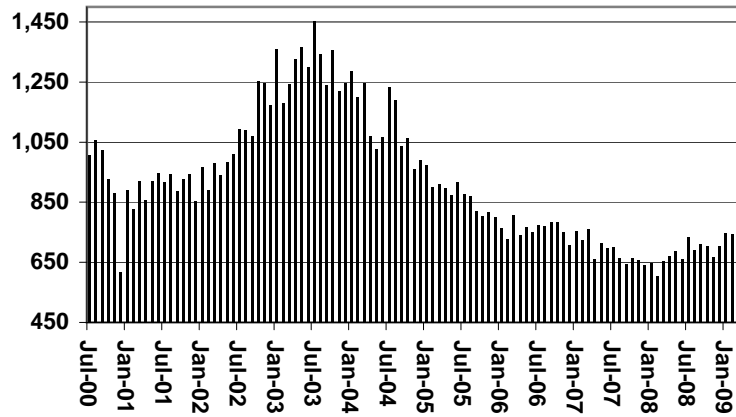
EXCLUDES: PRIOR MONTH NET TOTALS OF 730 CASES; 1,518 RECIPIENTS; \$44,162.

# CHART 1B

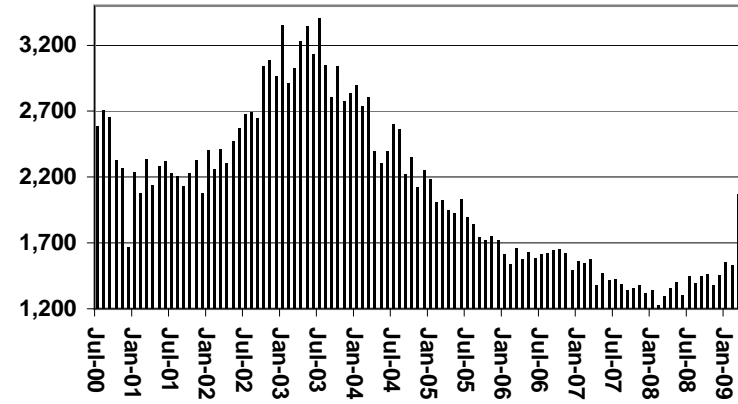
## CASH ASSISTANCE PROGRAM CASES WITH GRANT UNDER \$100

### COMPARISON OF CASES, RECIPIENTS, PAYMENTS & AVERAGE PAYMENTS FOR 2000, 2001, 2002, 2003, 2004, 2005, 2006, 2007, 2008

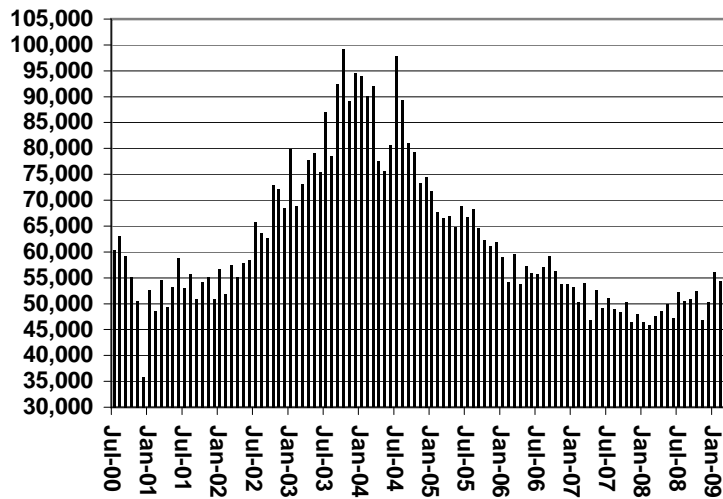
Cases



Recipients



Payments



Average Payment Per Recipient

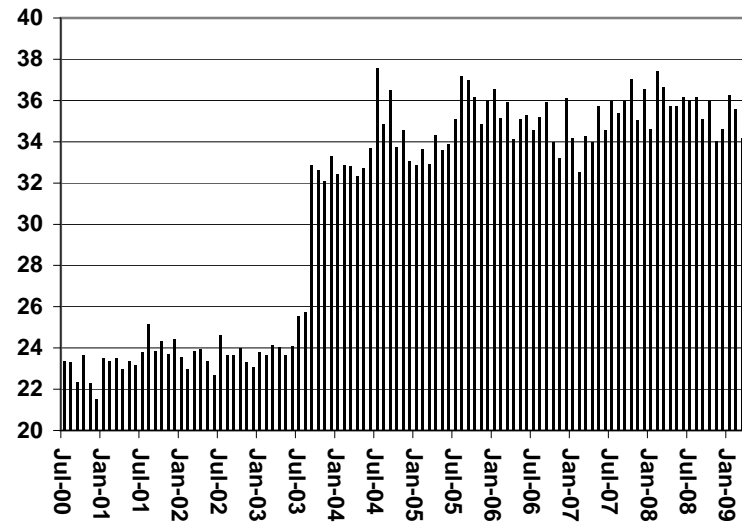


TABLE 1C 1/

CASH ASSISTANCE UNEMPLOYED PARENT PROGRAM: ARIZONA  
CASES WITH GRANT UNDER \$100

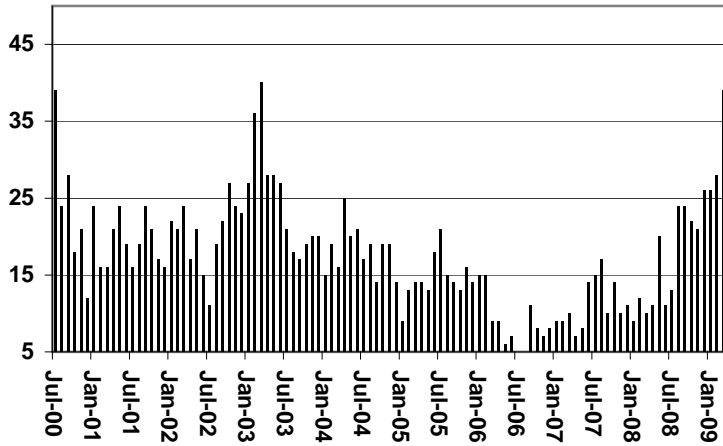
	CHANGE FROM												
	MARCH 2009							FEBRUARY 2009			MARCH 2008		
	FAMILIES (CASES)	PERSONS (RECIP.)	ADULTS	CHILDREN	TOTAL PAYMENTS	AVERAGE PAYMENT/ CASE	AVERAGE PAYMENT/ RECIP.	FAMILIES (CASES)	PERSONS (RECIP.)	TOTAL PAYMENTS	FAMILIES (CASES)	PERSONS (RECIP.)	TOTAL PAYMENTS
ARIZONA	39	119	33	86	1,927	49.41	16.19	11	44	541	29	94	1,404
DISTRICT I													
MARICOPA	25	76	11	65	1,197	47.88	15.75	7	32	398	18	61	908
DISTRICT II													
PIMA	6	19	10	9	286	47.67	15.05	3	9	87	5	17	226
DISTRICT III													
APACHE	0	0	0	0	0	0.00	0.00	0	0	0	0	0	0
COCONINO	0	0	0	0	0	0.00	0.00	0	0	0	0	0	0
NAVAJO	1	3	2	1	98	98.00	32.67	1	3	98	1	3	98
YAVAPAI	1	3	2	1	39	39.00	13.00	1	3	39	0	0	(38)
DISTRICT IV													
LA PAZ	0	0	0	0	0	0.00	0.00	0	0	0	0	0	0
MOHAVE	2	7	4	3	126	63.00	18.00	(2)	(4)	(172)	1	2	29
YUMA	0	0	0	0	0	0.00	0.00	0	0	0	0	0	0
DISTRICT V													
GILA	0	0	0	0	0	0.00	0.00	0	0	0	0	0	0
PINAL	3	8	4	4	98	32.67	12.25	0	(2)	8	3	8	98
DISTRICT VI													
COCHISE	0	0	0	0	0	0.00	0.00	0	0	0	0	0	0
GRAHAM	0	0	0	0	0	0.00	0.00	0	0	0	0	0	0
GREENLEE	0	0	0	0	0	0.00	0.00	0	0	0	0	0	0
SANTA CRUZ	1	3	0	3	83	83.00	27.67	1	3	83	1	3	83

EXCLUDES: PRIOR MONTH NET TOTALS OF 75 CASES; 254 RECIPIENTS; \$3,972.

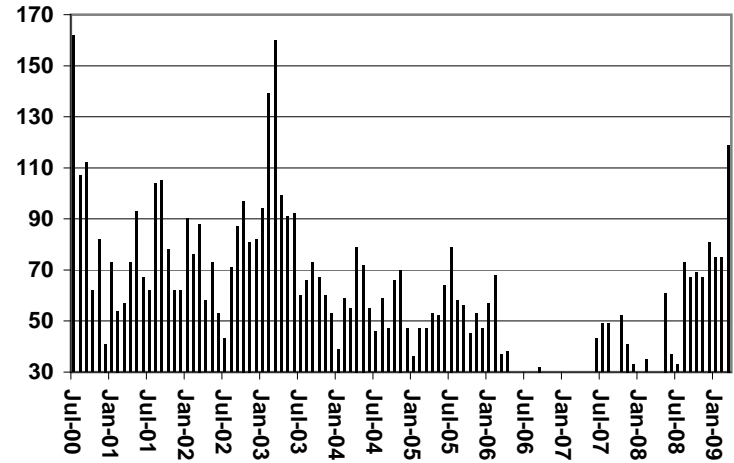
# CHART 1C

## CASH ASSISTANCE UNEMPLOYED PARENT PROGRAM CASES WITH GRANT UNDER \$100 COMPARISON OF CASES, RECIPIENTS, PAYMENTS & AVERAGE PAYMENTS FOR 2000, 2001, 2002, 2003, 2004, 2005, 2006, 2007, & 2008

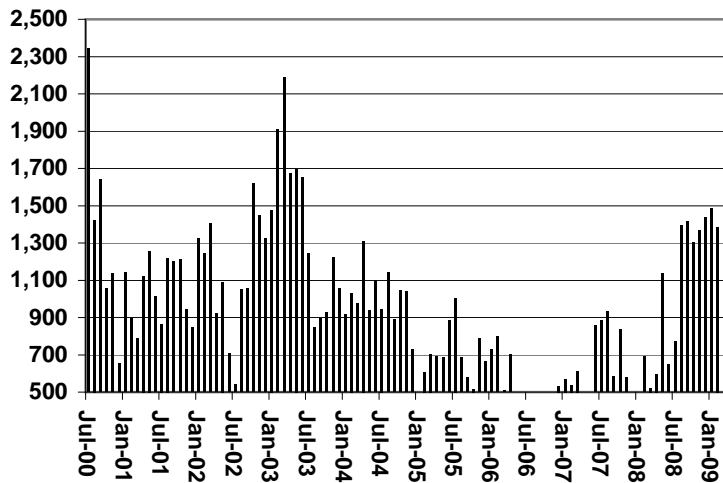
**Cases**



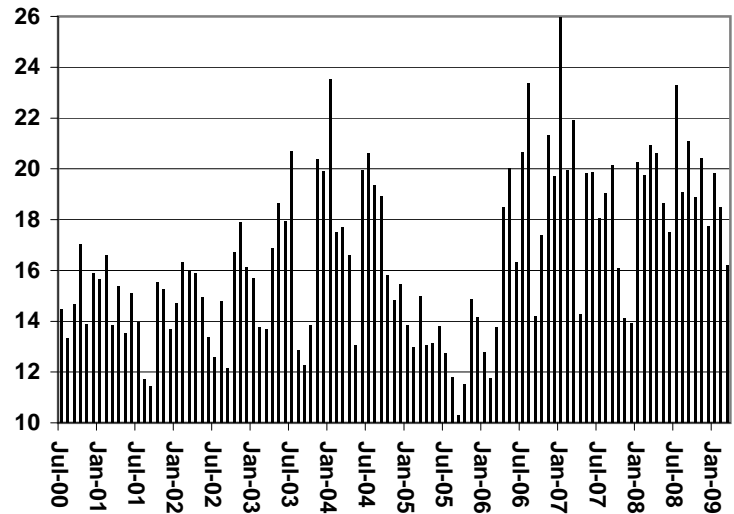
**Recipients**



**Payments**



**Average Payment Per Recipient**



**TABLE 4**

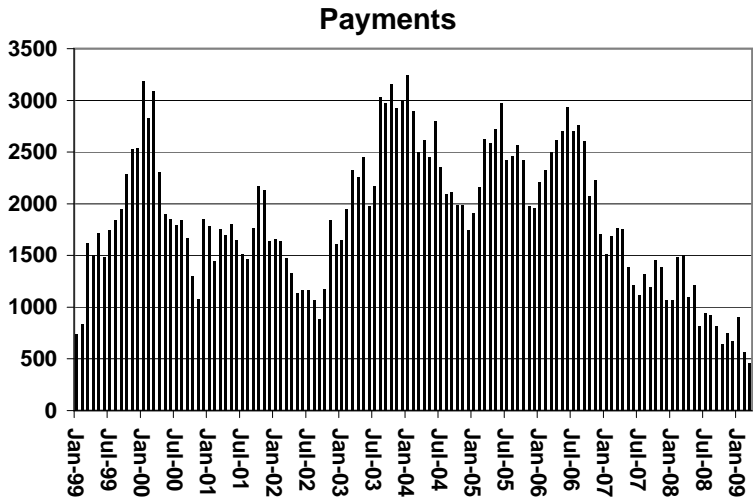
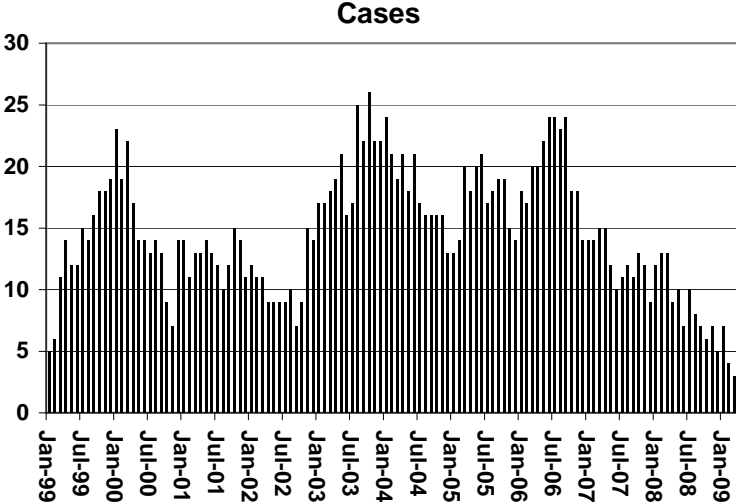
**TUBERCULOSIS CONTROL: ARIZONA 1/**

	MARCH 2009						CHANGE FROM					
							FEBRUARY 2009			MARCH 2008		
	NUMBER OF CASES	PERSONS (RECIP.)	TOTAL PAYMENTS	AVERAGE PAYMENT/ CASE	AVERAGE PAYMENT/ RECIP.		NUMBER OF CASES	PERSONS (RECIP.)	TOTAL PAYMENTS	NUMBER OF CASES	PERSONS (RECIP.)	TOTAL PAYMENTS
ARIZONA	3	3	454	151.33	151.33		(1)	(1)	(108)	(10)	(10)	(1,050)
DISTRICT I												
MARICOPA	2	2	281	140.50	140.50		(1)	(1)	(108)	(10)	(10)	(1,115)
DISTRICT II												
PIMA	0	0	0	0.00	0.00		0	0	0	0	0	0
DISTRICT III	0	0	0	0	0.00		0	0	0	(1)	(1)	(108)
APACHE	0	0	0	0.00	0.00		0	0	0	0	0	0
COCONINO	0	0	0	0.00	0.00		0	0	0	0	0	0
NAVAJO	0	0	0	0.00	0.00		0	0	0	0	0	0
YAVAPAI	0	0	0	0.00	0.00		0	0	0	(1)	(1)	(108)
DISTRICT IV	1	1	173	173.00	173.00		0	0	0	1	1	173
LA PAZ	0	0	0	0.00	0.00		0	0	0	0	0	0
MOHAVE	0	0	0	0.00	0.00		0	0	0	0	0	0
YUMA	1	1	173	173.00	173.00		0	0	0	1	1	173
DISTRICT V	0	0	0	0.00	0.00		0	0	0	0	0	0
GILA	0	0	0	0.00	0.00		0	0	0	0	0	0
PINAL	0	0	0	0.00	0.00		0	0	0	0	0	0
DISTRICT VI	0	0	0	0.00	0.00		0	0	0	0	0	0
COCHISE	0	0	0	0.00	0.00		0	0	0	0	0	0
GRAHAM	0	0	0	0.00	0.00		0	0	0	0	0	0
GREENLEE	0	0	0	0.00	0.00		0	0	0	0	0	0
SANTA CRUZ	0	0	0	0.00	0.00		0	0	0	0	0	0

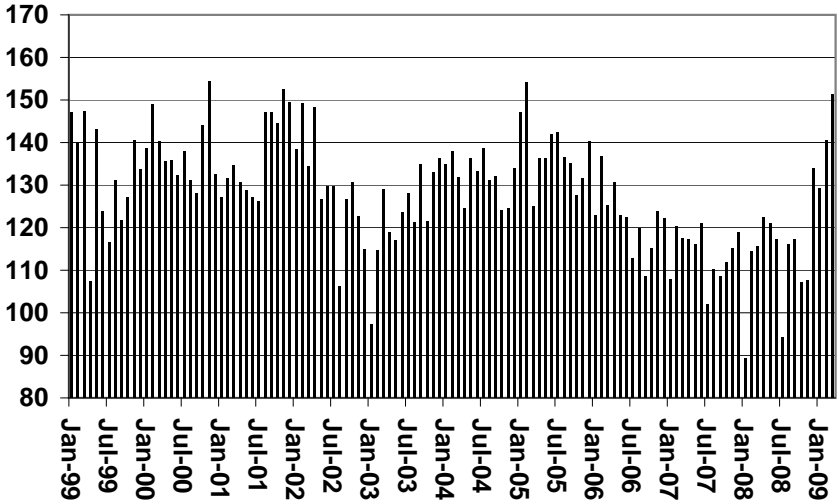
1/EXCLUDES: PRIOR MONTH NET TOTALS OF : 0 CASES; 0 RECIPIENTS; \$0.

# CHART 4

## TUBERCULOSIS CONTROL PROGRAM COMPARISON OF CASES, PAYMENTS & AVERAGE PAYMENTS FOR 1999, 2000, 2001, 2002, 2003, 2004, 2005, 2006, 2007, & 2008



### Average Payment Per Case



**TABLE 6**

**SUPPLEMENTAL NUTRITION ASSISTANCE PROGRAM: ARIZONA 1**

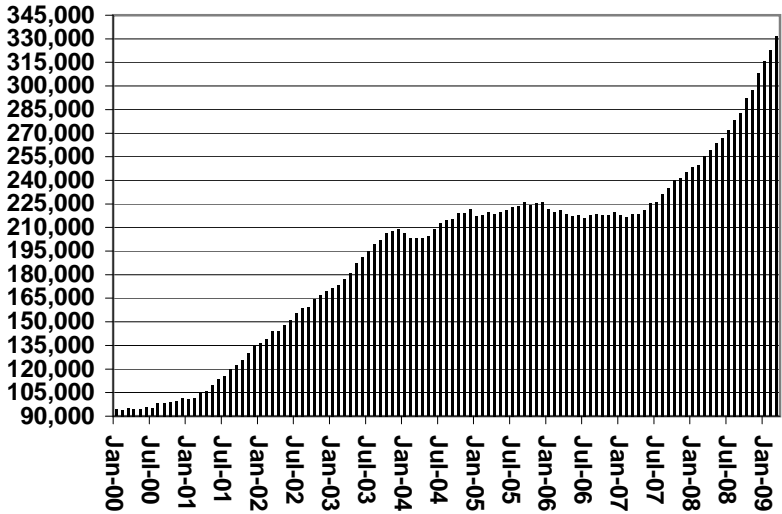
	CHANGE FROM											
	MARCH 2009					FEBRUARY 2009			MARCH 2008			
	HOUSEHOLDS	PERSONS	TOTAL COUPON ISSUANCE	AVERAGE ALLOT./ HOUSEHOLD	AVERAGE ALLOT./ PERSON	HOUSEHOLDS	PERSONS	TOTAL COUPON ISSUANCE	HOUSEHOLDS	PERSONS	TOTAL COUPON ISSUANCE	
ARIZONA	331,393	791,244	89,310,413	269.50	112.87	8,815	18,710	2,852,265	76,181	172,797	27,040,737	
DISTRICT I												
MARICOPA	172,889	414,880	47,900,532	277.06	115.46	5,406	11,314	1,730,371	44,938	103,048	15,870,642	
DISTRICT II												
PIMA	57,220	127,479	14,426,788	252.13	113.17	1,187	2,440	392,614	11,529	23,463	3,935,833	
DISTRICT III												
APACHE	6,985	20,881	2,225,552	318.62	106.58	18	88	12,648	605	1,390	324,899	
COCONINO	7,318	20,458	2,189,581	299.20	107.03	246	556	77,622	1,315	3,308	545,683	
NAVAJO	11,784	32,346	3,455,296	293.22	106.82	316	720	97,579	1,840	4,595	748,053	
YAVAPAI	10,403	21,520	2,405,334	231.22	111.77	432	835	120,994	3,049	6,563	934,012	
DISTRICT IV												
LA PAZ	1,606	3,361	387,582	241.33	115.32	23	20	3,823	275	457	85,940	
MOHAVE	15,231	31,437	3,567,970	234.26	113.50	224	429	47,341	3,244	6,401	992,266	
YUMA	11,537	30,417	2,998,210	259.88	98.57	111	325	52,707	1,874	4,866	742,113	
DISTRICT V												
GILA	21,427	53,304	6,001,803	280.10	112.60	470	1,187	186,737	4,784	12,294	1,845,197	
PINAL	4,466	10,083	1,153,375	258.26	114.39	78	155	28,543	824	1,679	295,096	
	16,961	43,221	4,848,428	285.86	112.18	392	1,032	158,194	3,960	10,615	1,550,101	
DISTRICT VI												
COCHISE	14,993	35,161	3,751,765	250.23	106.70	382	796	129,829	2,728	6,412	1,016,099	
GRAHAM	8,500	18,716	2,014,150	236.96	107.62	179	301	54,460	1,295	2,703	460,175	
GREENLEE	2,641	6,286	696,567	263.75	110.81	127	342	49,603	462	1,100	200,193	
SANTA CRUZ	362	800	84,580	233.65	105.73	9	12	2,873	123	320	35,976	
	3,490	9,359	956,468	274.06	102.20	67	141	22,893	848	2,289	319,755	

1/EXCLUDES: PRIOR MONTH NET TOTALS OF : 9,850 CASES; 26,017 RECIPIENTS; \$1,627,929.  
 AGED CANCELATIONS: 0 CASES; 0 RECIPIENTS; 0.  
 SNAP COUPON CONVERSIONS: 0 CASES; 0 RECIPIENTS; \$0.  
 SNAP REINSTATED: 0 CASES; \$0.  
 SNAP ZERO PAY: 9,881 CASES; 40,197 RECIPIENTS.

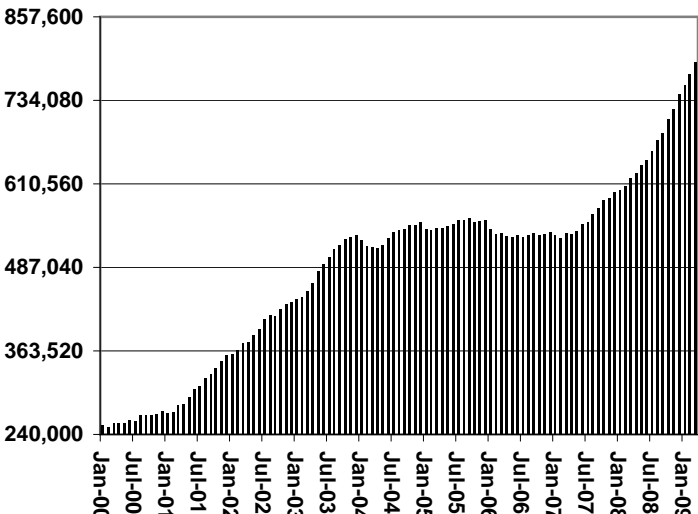
# CHART 6

## SUPPLEMENTAL NUTRITION ASSISTANCE PROGRAM (SNAP) COMPARISON OF HOUSEHOLDS, RECIPIENTS, PAYMENTS & AVERAGE PAYMENTS FOR 1999, 2000, 2001, 2002, 2003, 2004, 2005, 2006, 2007, & 2008

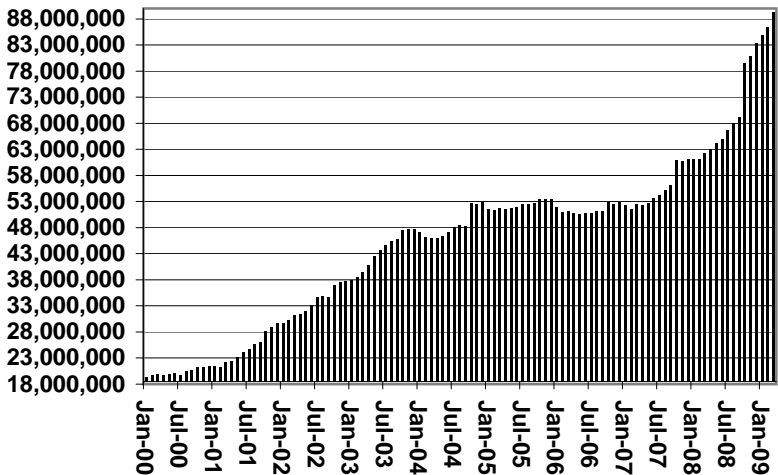
**Households**



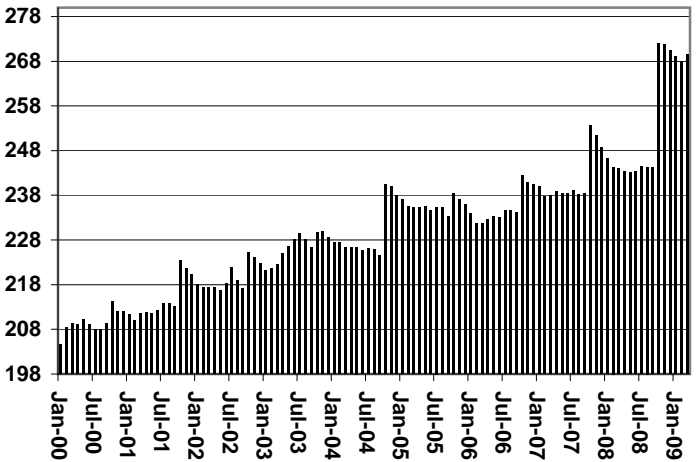
**Recipients**



**Payments**



**Average Payment Per Household**





**TABLE 7A**

**MEDICAL ASSISTANCE PROGRAM**

**RECIPIENTS**

**MARCH 2009**

	SOBRA WOMAN 133% FPL	SOBRA CHILD	ADULT W/O CHILD 100% FPL	FOSTER CARE	1931 36% FPL	FEDERAL EMERGENCY SERVICES	INFANTS	ADULT W/O CHILD 40% FPL	MEDICAL W/SPEND DOWN	SOBRA WOMAN 100% FPL	SOBRA CHILD 100% FPL	TRANSITIONAL MEDICAL T1 - T4	1931 100% FPL	YATI	OTHER	TOTAL CASES
ARIZONA	11,467	64,655	44,000	11,142	309,909	87,749	48,079	112,369	5,670	3,670	186,313	42,405	92,841	284	26,039	1,046,592
DISTRICT I																
MARICOPA	5,918	36,502	19,552	5,660	170,035	68,426	28,451	52,980	2,956	1,868	106,362	20,296	44,942	150	12,958	577,056
DISTRICT II																
PIMA	1,775	9,752	8,297	3,158	46,232	10,583	6,796	20,028	816	571	27,969	7,057	15,946	85	4,605	163,670
DISTRICT III																
APACHE	213	1,353	1,120	42	11,000	109	973	4,085	100	79	3,911	845	2,434	2	381	26,647
COCONINO	340	1,428	1,210	134	7,893	559	1,143	3,449	124	113	4,179	1,051	2,452	5	410	24,490
NAVAJO	389	2,266	1,545	132	11,972	363	1,382	5,137	185	167	5,210	1,341	3,437	4	624	34,154
YAVAPAI	455	1,874	2,057	442	7,009	1,567	1,254	3,801	295	115	4,899	1,201	3,207	13	1,115	29,304
DISTRICT IV																
LA PAZ	35	232	214	8	1,233	170	158	670	36	9	642	161	353	0	170	4,091
MOHAVE	472	2,189	2,351	269	11,013	897	1,552	6,091	435	175	7,215	1,830	4,457	3	1,416	40,365
YUMA	601	2,414	2,229	262	9,958	1,753	1,918	3,330	193	173	7,926	4,445	4,872	2	1,338	41,414
DISTRICT V																
GILA	147	671	612	83	4,279	169	504	2,214	101	44	1,892	368	1,196	0	336	12,616
PINAL	577	3,731	2,103	579	16,632	1,783	2,182	6,098	182	179	8,369	1,790	4,613	15	1,253	50,086
DISTRICT VI																
COCHISE	257	1,167	1,430	261	6,622	692	853	2,536	142	81	3,690	954	2,484	5	803	21,977
GRAHAM	137	480	427	76	2,522	58	396	1,059	41	38	1,197	359	815	0	148	7,753
GREENLEE	24	46	50	6	321	10	62	135	10	6	160	26	90	0	17	963
SANTA CRUZ	127	550	803	30	3,188	610	455	756	54	52	2,692	681	1,543	0	465	12,006

**TABLE 7B**

**MEDICAL ASSISTANCE PROGRAM**

**RECIPIENTS**

**CHANGE FROM**

**FEBRUARY 2009**

	SOBRA WOMAN 133% FPL	SOBRA CHILD	ADULT W/O CHILD 100% FPL	FOSTER CARE	1931 36% FPL	FEDERAL EMERGENCY SERVICES	INFANTS	ADULT W/O CHILD 40% FPL	MEDICAL W/SPEND DOWN	SOBRA WOMAN 100% FPL	SOBRA CHILD 100% FPL	TRANSITIONAL MEDICAL T1 - T4	1931 100% FPL	YATI	OTHER	TOTAL CASES
ARIZONA	76	(213)	565	122	5,155	825	(286)	1,673	(3)	(10)	1,815	(1,019)	1,879	(8)	(118)	10,453
DISTRICT I																
MARICOPA	47	3	344	44	3,369	914	(217)	1,164	36	(7)	1,088	(276)	1,071	(2)	(81)	7,497
DISTRICT II																
PIMA	(29)	(150)	(3)	52	656	(26)	8	10	(29)	2	161	(304)	251	0	(62)	537
DISTRICT III																
APACHE	0	(8)	91	1	105	6	7	(51)	(9)	(7)	40	(84)	41	(1)	(11)	120
COCONINO	(13)	(20)	(48)	0	82	0	(2)	131	(21)	1	75	(24)	45	(1)	6	211
NAVAJO	(6)	(58)	24	(2)	75	(7)	1	(10)	(18)	9	123	(28)	93	(1)	16	211
YAVAPAI	16	(16)	47	8	249	(22)	6	166	15	(7)	38	(11)	83	(1)	7	578
DISTRICT IV																
LA PAZ	(1)	(2)	(12)	0	(22)	0	(13)	12	(5)	(2)	3	10	(1)	0	5	(28)
MOHAVE	23	50	65	3	51	2	(9)	111	5	14	51	(44)	86	0	22	430
YUMA	23	16	(10)	(2)	56	(40)	(20)	1	(23)	(12)	36	(10)	14	0	(13)	16
DISTRICT V																
GILA	(4)	20	70	14	309	3	(21)	119	9	(1)	194	(166)	182	(1)	(5)	722
PINAL	(4)	12	24	3	36	6	9	20	16	2	53	(8)	56	0	(3)	222
	0	8	46	11	273	(3)	(30)	99	(7)	(3)	141	(158)	126	(1)	(2)	500
DISTRICT VI																
COCHISE	9	(25)	0	3	71	(7)	(18)	(17)	20	6	22	(124)	42	(1)	(1)	(20)
GRAHAM	1	4	0	0	98	3	(2)	41	13	2	44	(46)	31	0	(3)	186
GREENLEE	(1)	(11)	(3)	0	22	0	(3)	(1)	8	(1)	2	8	5	0	(3)	22
SANTA CRUZ	11	(16)	0	1	34	(1)	(3)	(3)	(4)	(7)	(62)	80	(64)	0	5	(29)

**TABLE 7C**

**MEDICAL ASSISTANCE PROGRAM**

**RECIPIENTS**

**CHANGE FROM**

**MARCH 2008**

	SOBRA WOMAN 133% FPL	SOBRA CHILD	ADULT W/O CHILD 100% FPL	FOSTER CARE	1931 36% FPL	FEDERAL EMERGENCY SERVICES	INFANTS	ADULT W/O CHILD 40% FPL	MEDICAL W/SPEND DOWN	SOBRA WOMAN 100% FPL	SOBRA CHILD 100% FPL	TRANSITIONAL MEDICAL T1 - T4	3E 1931 100% FPL	YATI	OTHER	TOTAL CASES
ARIZONA	(404)	1,762	4,713	1,272	45,176	1,973	(2,349)	16,255	296	257	22,255	(790)	14,193	42	3,031	107,682
DISTRICT I																
MARICOPA	(195)	1,236	2,669	725	30,245	2,001	(1,858)	10,192	162	166	14,183	(237)	8,022	33	1,676	69,020
DISTRICT II																
PIMA	(19)	123	523	357	5,012	(15)	(303)	2,119	(28)	(5)	2,165	42	1,623	12	468	12,074
DISTRICT III																
APACHE	(48)	(42)	235	1	469	4	11	(218)	41	(9)	198	(21)	236	0	11	868
COCONINO	(35)	(26)	(47)	20	593	18	(58)	320	20	22	524	(94)	285	(4)	57	1,595
NAVAJO	11	219	237	18	579	29	(35)	251	10	68	768	87	586	2	52	2,882
YAVAPAI	18	56	287	11	1,325	(48)	(93)	747	82	(5)	784	(49)	682	0	155	3,952
DISTRICT IV																
LA PAZ	(6)	23	(10)	(6)	69	(23)	(19)	101	1	(8)	19	(46)	19	(1)	20	133
MOHAVE	(75)	119	262	32	1,459	13	5	1,067	118	(1)	749	53	686	(1)	164	4,650
YUMA	15	(69)	96	21	824	(162)	38	193	(29)	7	366	207	385	1	140	2,033
DISTRICT V																
GILA	8	(34)	40	2	398	30	26	242	1	17	350	(114)	184	(2)	36	1,184
PINAL	(76)	(7)	193	71	2,745	60	(67)	904	(81)	3	1,518	(217)	914	5	125	6,090
DISTRICT VI																
COCHISE	(2)	164	228	20	1,458	66	4	337	(1)	2	631	(401)	571	(3)	127	3,201
GRAHAM	(3)	140	95	9	411	9	(15)	78	3	(5)	185	(203)	254	(2)	63	1,019
GREENLEE	(12)	36	8	16	479	(9)	8	176	12	8	135	(124)	162	(1)	19	913
SANTA CRUZ	2	0	10	(5)	61	0	(2)	28	0	4	46	(30)	21	0	(2)	133
	11	(12)	115	0	507	66	13	55	(16)	(5)	265	(44)	134	0	47	1,136

# CHART 7

## MEDICAL ASSISTANCE PROGRAM

### COMPARISON OF RECIPIENTS

FOR 1999, 2000, 2001, 2002, 2003, 2004, 2005, 2006, 2007, & 2008

Total Recipients

