



DEPARTMENT OF ECONOMIC SECURITY

Your Partner For A Stronger Arizona

State of Arizona

Department of Economic Security

Family Assistance Administration

Statistical Bulletin

April, 2009

Phone: (602) 542-3678

<http://www.azdes.gov/faa/Statistics.asp>

**** STATISTICAL BULLETIN ****
ARIZONA DEPARTMENT OF ECONOMIC SECURITY
FAMILY ASSISTANCE ADMINISTRATION

BOX 6123, PHOENIX, ARIZONA 85005

PHONE (602) 542-3678

APRIL 2009

THIS ISSUE OF THE STATISTICAL BULLETIN COMPARES APRIL 2009 DATA FOR EACH OF THE INDICATED PROGRAMS WITH THE INFORMATION FOR MARCH 2009 AND APRIL 2008. STATEWIDE SUMMARIES OF ACTIVITY WITHIN EACH OF THE SPECIFIC PROGRAMS FOR THIS REPORT PERIOD ARE DISCUSSED BELOW. THE TABLES COMPARE CURRENT AND PRIOR MONTH DATA. DISTRICT AND COUNTY COMPARISONS ARE PROVIDED WITHIN THIS BULLETIN

TANF SUMMARY

COMPARING TO MARCH 2009, APRIL 2009 CASES DECREASED BY 432 (1.10%) TO 38,803. RECIPIENTS DECREASED BY 1,266 (1.47%) TO 84,854. PAYMENTS DECREASED BY \$173,137 (2.04%) TO \$8,317,903. AVERAGE PAYMENT PER CASE DECREASED BY \$2.05 (0.95%) TO \$214.36. PAYMENT PER RECIPIENT DECREASED BY \$0.57 (0.58%) TO \$98.03.

COMPARING TO APRIL 2008, APRIL 2009 CASES INCREASED BY 2,508 (6.91%). RECIPIENTS INCREASED BY 6,865 (8.80%). TOTAL PAYMENTS DECREASED BY \$1,238,391 (12.96%). THE AVERAGE PAYMENT PER CASE DECREASED BY \$48.94 (18.59%). THE AVERAGE PAYMENT PER RECIPIENT DECREASED BY \$24.50 (19.99%).

CASH ASSISTANCE (CA)

COMPARING TO MARCH 2009, APRIL 2009 CASES DECREASED BY 302 (0.82%) TO 36,348. RECIPIENTS DECREASED BY 797 (1.02%) TO 77,706. PAYMENTS DECREASED BY \$156,162 (1.96%) TO \$7,825,697. AVERAGE PAYMENT PER CASE DECREASED BY \$2.49 (1.14%) TO \$215.30. PAYMENT PER RECIPIENT DECREASED BY \$0.97 (0.95%) TO \$100.71.

COMPARING TO APRIL 2008, APRIL 2009 CASES INCREASED BY 1,527 (4.39%). RECIPIENTS INCREASED BY 3,952 (5.36%). TOTAL PAYMENTS DECREASED BY \$1,406,016 (15.23%). THE AVERAGE PAYMENT PER CASE DECREASED BY \$49.82 (18.79%). THE AVERAGE PAYMENT PER RECIPIENT DECREASED BY \$24.46 (19.54%).

CASH ASSISTANCE UNEMPLOYED PARENT PROGRAM (CA-UP)

COMPARING TO MARCH 2009, APRIL 2009 CASES DECREASED BY 75 (4.91%) TO 1,451. RECIPIENTS DECREASED BY 339 (6.25%) TO 5,089. PAYMENTS DECREASED BY \$10,884 (2.49%) TO \$425,603. AVERAGE PAYMENT PER CASE INCREASED BY \$7.29 (2.55%) TO \$293.32. PAYMENT PER RECIPIENT INCREASED BY \$3.22 (4.00%) TO \$83.63.

COMPARING TO APRIL 2008, APRIL 2009 CASES INCREASED BY 661 (83.67%). RECIPIENTS INCREASED BY 2,241 (78.69%). TOTAL PAYMENTS INCREASED BY \$150,154 (54.51%). THE AVERAGE PAYMENT PER CASE DECREASED BY \$55.35 (15.87%). THE AVERAGE PAYMENT PER RECIPIENT DECREASED BY \$13.09 (13.53%).

CASH ASSISTANCE WITH GRANT UNDER \$100 (CA-MOE)

COMPARING TO MARCH 2009, APRIL 2009 CASES DECREASED BY 62 (6.08%) TO 958. RECIPIENTS DECREASED BY 147 (7.10%) TO 1,923. PAYMENTS DECREASED BY \$6,844 (9.67%) TO \$63,923. AVERAGE PAYMENT PER CASE DECREASED BY \$2.65 (3.82%) TO \$66.73. AVERAGE PAYMENT PER RECIPIENT DECREASED BY \$0.95 (2.78%) TO \$33.24.

COMPARING TO APRIL 2008, APRIL 2009 CASES INCREASED BY 285 (42.35%). RECIPIENTS INCREASED BY 565 (41.61%). TOTAL PAYMENTS INCREASED BY \$15,389 (31.71%). THE AVERAGE PAYMENT PER CASE DECREASED BY \$5.39 (7.47%). THE AVERAGE PAYMENT PER RECIPIENT DECREASED BY \$2.50 (6.99%).

CASH ASSISTANCE UNEMPLOYED PARENT PROGRAM WITH GRANT UNDER \$100 (CA-UP-MOE) NEW PROGRAM STARTING 7/01

COMPARING TO MARCH 2009, APRIL 2009 CASES INCREASED BY 7 (17.95%) TO 46. RECIPIENTS INCREASED BY 17 (14.29%) TO 136. PAYMENTS INCREASED BY \$753 (39.08%) TO \$2,680. AVERAGE PAYMENT PER CASE INCREASED BY \$8.85 (17.91%) TO \$58.26. PAYMENT PER RECIPIENT INCREASED BY \$3.52 (21.74%) TO \$19.71.

COMPARING TO APRIL 2008, APRIL 2009 CASES INCREASED BY 35 (318.18%). RECIPIENTS INCREASED BY 107 (5.55%). TOTAL PAYMENTS INCREASED BY \$2,082 (348.16%). THE AVERAGE PAYMENT PER CASE INCREASED BY \$3.90 (7.17%). THE AVERAGE PAYMENT PER RECIPIENT DECREASED BY \$0.91 (4.41%).

TUBERCULOSIS CONTROL PROGRAM (TC)

COMPARING TO MARCH 2009, APRIL 2009 CASES INCREASED BY 0 (0.00%) TO 3. RECIPIENTS INCREASED BY 0 (0.00%) TO 3. PAYMENTS INCREASED BY \$0 (0.00%) TO \$454. AVERAGE PAYMENT PER CASE INCREASED BY \$63.03 (41.65%) TO \$214.36. AVERAGE PAYMENT PER RECIPIENT DECREASED BY \$0.00 (0.00%) TO \$151.33.

COMPARING TO APRIL 2008, APRIL 2009 CASES DECREASED BY 6 (66.67%). RECIPIENTS DECREASED BY 6 (66.67%). TOTAL PAYMENTS DECREASED BY \$648 (58.80%). THE AVERAGE PAYMENT PER CASE INCREASED BY \$91.92 (75.07%). THE AVERAGE PAYMENT PER RECIPIENT INCREASED BY \$28.89 (23.59%).

SUPPLEMENTAL NUTRITION ASSISTANCE PROGRAM (SNAP)

COMPARING TO MARCH 2009, APRIL 2009 SUPPLEMENTAL NUTRITION ASSISTANCE HOUSEHOLDS INCREASED BY 8,488 (2.56%) TO 339,881. PERSONS RECEIVING SUPPLEMENTAL NUTRITION ASSISTANCE INCREASED BY 21,115 (2.67%) TO 812,359. TOTAL COUPON ISSUANCE INCREASED BY \$18,596,874 (20.82%) TO \$107,907,287. THE AVERAGE HOUSEHOLD ALLOTMENT INCREASED BY \$47.99 (17.81%) TO \$317.49. THE AVERAGE ALLOTMENT PER PERSON INCREASED BY \$19.96 (17.68%) TO \$132.83.

COMPARING TO APRIL 2008, APRIL 2009 SUPPLEMENTAL NUTRITION ASSISTANCE HOUSEHOLDS INCREASED BY 80,880 (31.23%). PERSONS RECEIVING SUPPLEMENTAL NUTRITION ASSISTANCE INCREASED BY 185,804 (29.65%). TOTAL COUPON ISSUANCE INCREASED BY \$44,871,692 (71.18%). THE AVERAGE ALLOTMENT PER HOUSEHOLD INCREASED BY \$74.11 (30.45%). THE AVERAGE ALLOTMENT PER PERSON INCREASED BY \$32.22 (32.03%).

MEDICAL ASSISTANCE PROGRAM (MA) NEW TABLE INCLUDES PROP. 204 CATEGORIES

COMPARING TO MARCH 2009, APRIL 2009 TOTAL RECIPIENTS TOTAL RECIPIENTS INCREASED BY 13,770 (1.32%). SOBRA WOMEN AT 140% FPL DECREASED BY 357 (3.11%). SOBRA CHILDREN DECREASED BY 1,494 (2.31%). ADULTS W/O CHILD AT 100% INCREASED BY 504 (1.15%). FOSTER CARE INCREASED BY 84 (0.75%). 1931 AT 36% FPL INCREASED BY 3,935 (1.27%). EMERGENCY SERVICES INCREASED BY 615 (0.70%). INFANTS DECREASED BY 554 (1.15%). ADULT W/O CHILD AT 140% INCREASED BY 3,469 (3.09%). MEDICAL W/SPEND DOWN DECREASED BY 40 (0.71%). SOBRA WOMAN AT 100% INCREASED BY 260 (7.08%). SOBRA CHILD AT 100% INCREASED BY 6,743 (3.62%). TRANSITIONAL MEDICAL DECREASED BY 2,722 (6.42%). 1931 AT 100% INCREASED BY 3,888 (4.19%). YATI INCREASED BY 3 (1.06%). ALL OTHER CATEGORIES DECREASED BY 564 (2.17%).

COMPARING TO APRIL 2008, APRIL 2009 TOTAL RECIPIENTS TOTAL RECIPIENTS INCREASED BY 118,726 (12.61%). SOBRA WOMEN AT 140% FPL DECREASED BY 580 (4.96%). SOBRA CHILDREN INCREASED BY 1,031 (1.66%). ADULTS W/O CHILD AT 100% INCREASED BY 5,179 (13.17%). FOSTER CARE INCREASED BY 1,252 (12.55%). 1931 AT 36% FPL INCREASED BY 47,985 (18.05%). EMERGENCY SERVICES INCREASED BY 3,319 (3.90%). INFANTS DECREASED BY 2,451 (4.90%). ADULT W/O CHILD AT 140% INCREASED BY 18,811 (19.39%). MEDICAL W/SPEND DOWN INCREASED BY 388 (7.40%). SOBRA WOMAN AT 100% INCREASED BY 385 (10.86%). SOBRA CHILD AT 100% INCREASED BY 27,232 (16.42%). TRANSITIONAL MEDICAL DECREASED BY 3,267 (7.61%). 1931 AT 100% INCREASED BY 17,107 (21.49%). YATI INCREASED BY 41 (16.67%). ALL OTHER CATEGORIES INCREASED BY 2,294 (9.90%).

TANF SUMMARY

TABLES 1, 1A, 1B, & 1C: ARIZONA 1/

	APRIL 2009							MARCH 2009			CHANGE FROM APRIL 2008		
	FAMILIES (CASES)	PERSONS (RECIP.)	ADULTS	CHILDREN	TOTAL PAYMENTS	AVERAGE PAYMENT/ CASE	AVERAGE PAYMENT/ RECIP.	FAMILIES (CASES)	PERSONS (RECIP.)	TOTAL PAYMENTS	FAMILIES (CASES)	PERSONS (RECIP.)	TOTAL PAYMENTS
ARIZONA	38,803	84,854	20,842	64,012	8,317,903	214.36	98.03	(432)	(1,266)	(173,137)	2,508	6,865	(1,238,391)
DISTRICT I													
MARICOPA	23,082	51,302	11,830	39,472	4,922,739	213.27	95.96	(92)	(375)	(80,890)	2,699	6,863	(496,498)
DISTRICT II													
PIMA	6,582	13,627	3,584	10,043	1,386,794	210.69	101.77	(138)	(350)	(37,410)	(217)	(381)	(377,976)
DISTRICT III													
APACHE	6	14	4	10	1,439	239.83	102.79	(58)	(113)	(11,241)	(91)	(166)	(22,753)
COCONINO	239	499	124	375	47,412	198.38	95.01	(16)	(39)	(4,764)	7	9	(9,347)
NAVAJO	1,435	3,614	1,074	2,540	382,700	266.69	105.89	63	145	17,161	139	418	23,327
YAVAPAI	762	1,506	363	1,143	148,556	194.96	98.64	(5)	(18)	(3,910)	83	188	(17,099)
DISTRICT IV													
LA PAZ	179	372	113	259	36,303	202.81	97.59	(9)	(32)	(3,380)	(55)	(152)	(22,016)
MOHAVE	1,298	2,731	782	1,949	268,619	206.95	98.36	(55)	(150)	(15,500)	(88)	(164)	(88,702)
YUMA	968	2,050	418	1,632	200,922	207.56	98.01	(35)	(104)	(9,597)	(64)	(160)	(67,180)
DISTRICT V													
GILA	715	1,530	548	982	176,364	246.66	115.27	1	(5)	1,446	42	169	1,030
PINAL	1,968	4,394	1,164	3,230	413,748	210.24	94.16	(24)	(82)	(8,143)	97	233	(81,300)
DISTRICT VI													
COCHISE	930	1,867	477	1,390	195,098	209.78	104.50	(25)	(62)	(5,210)	(36)	(47)	(52,580)
GRAHAM	333	681	209	472	73,601	221.02	108.08	(41)	(83)	(10,573)	(25)	6	(14,195)
GREENLEE	43	96	27	69	9,624	223.81	100.25	8	16	1,565	8	21	453
SANTA CRUZ	263	571	125	446	53,984	205.26	94.54	(6)	(14)	(2,691)	9	28	(13,555)

1/EXCLUDES: PRIOR MONTH NET TOTALS OF 1,908 CASES; 4,710 RECIPIENTS; \$352,895.
 GRANT DIVERSION TOTALS OF: 233 CASES; \$206,969.
 ZERO PAY TOTALS OF 701 CASES; 2,390 RECIPIENTS.

RRP: 580 CASES; 996 RECIPIENTS; \$162,173.

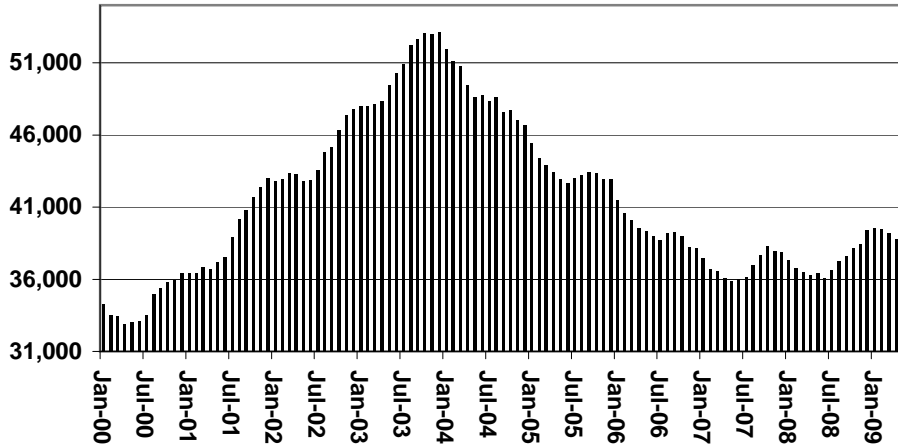
	CURRENT MO. CASES	CURRENT MO. RECIP.	CURRENT MO. DOLLARS	PRIOR MO. CASES	PRIOR MO. RECIP.	PRIOR MO. DOLLARS
PASQUA/YAQUI	327	964	\$100,530	22	65	3,777
WM APACHE	736	2,067	\$226,694	6	21	1,443
SALT RIVER	61	214	\$19,427	3	8	481
SAN CARLOS	665	1,457	\$173,742	17	46	2,933
HOPÍ	111	316	\$25,800	4	13	293
TOTAL	1,900	5,018	\$546,193	52	153	\$8,927

TANF SUMMARY

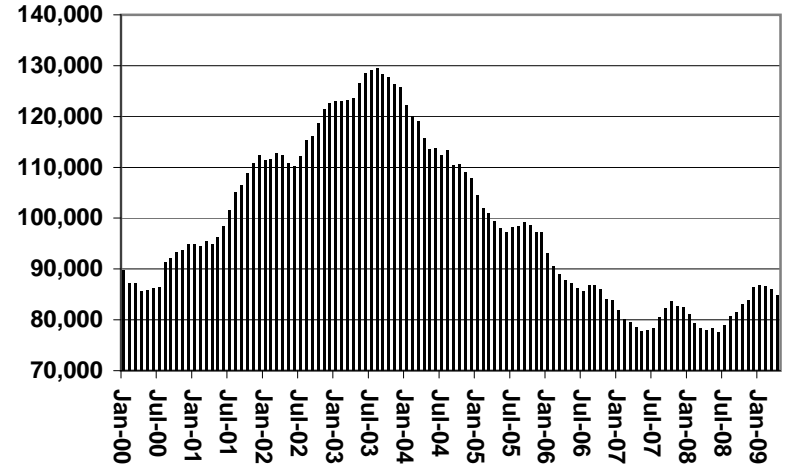
TABLES 1, 1A, 1B, & 1C

COMPARISON OF CASES, RECIPIENTS, PAYMENTS & AVERAGE PAYMENTS
FOR 2000, 2001, 2002, 2003, 2004, 2005, 2006, 2007, 2008, & 2009

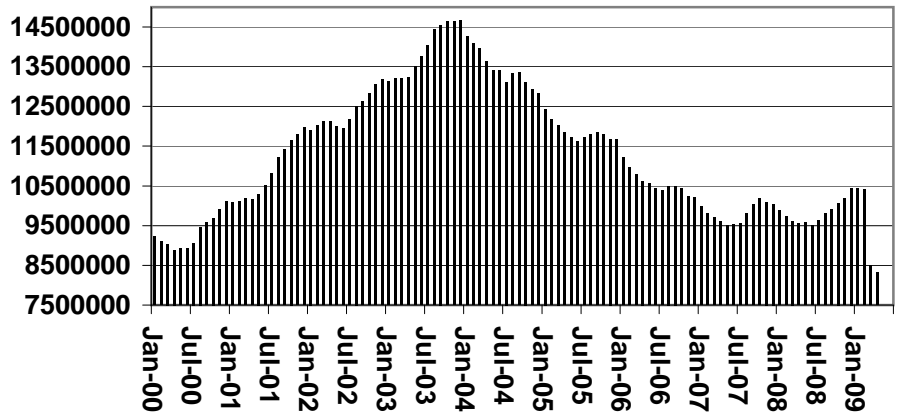
Cases



Recipients



Payments



Average Payments Per Recipient

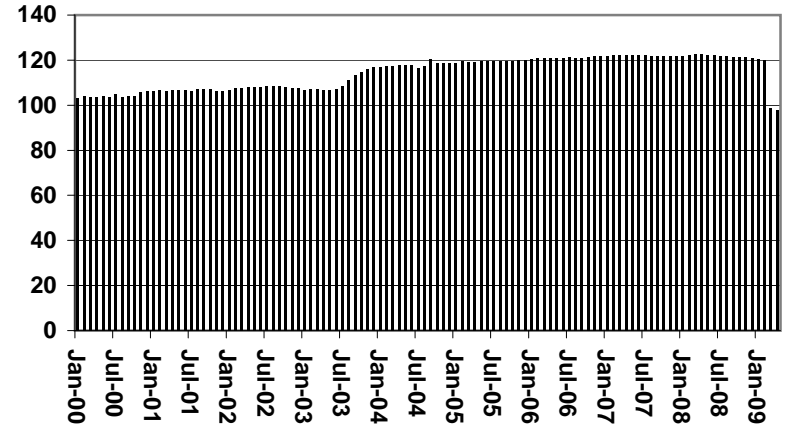


TABLE 1
CASH ASSISTANCE: ARIZONA 1/

	APRIL 2009							CHANGE FROM					
								MARCH 2009			APRIL 2008		
	FAMILIES (CASES)	(RECIP.)	ADULTS	CHILDREN	TOTAL PAYMENTS	AVERAGE PAYMENT/ CASE	AVERAGE PAYMENT/ RECIP.	FAMILIES (CASES)	PERSONS (RECIP.)	TOTAL PAYMENTS	FAMILIES (CASES)	PERSONS (RECIP.)	TOTAL PAYMENTS
ARIZONA	36,348	77,706	18,339	59,367	7,825,697	215.30	100.71	(302)	(797)	(156,162)	1,527	3,952	(1,406,016)
DISTRICT I													
MARICOPA	21,558	46,996	10,501	36,495	4,624,841	214.53	98.41	(30)	(99)	(71,633)	1,899	4,493	(646,698)
DISTRICT II													
PIMA	6,188	12,387	3,069	9,318	1,296,758	209.56	104.69	(99)	(240)	(34,741)	(348)	(845)	(410,907)
DISTRICT III													
APACHE	6	14	4	10	1,439	239.83	102.79	(51)	(94)	(10,355)	(86)	(153)	(21,728)
COCONINO	225	454	107	347	44,655	198.47	98.36	(18)	(43)	(4,919)	6	(3)	(9,798)
NAVAJO	1,368	3,405	978	2,427	366,981	268.26	107.78	65	167	20,227	173	609	44,079
YAVAPAI	699	1,337	298	1,039	139,383	199.40	104.25	(3)	(31)	(4,215)	53	106	(20,483)
DISTRICT IV													
LA PAZ	168	347	102	245	34,674	206.39	99.93	(12)	(32)	(3,267)	(44)	(113)	(19,942)
MOHAVE	1,208	2,485	676	1,809	252,822	209.29	101.74	(54)	(133)	(14,917)	(92)	(145)	(83,567)
YUMA	925	1,931	372	1,559	193,173	208.84	100.04	(33)	(105)	(9,140)	(74)	(184)	(69,347)
DISTRICT V													
GILA	701	1,502	537	965	174,790	249.34	116.37	5	13	2,500	63	241	9,608
PINAL	1,812	3,860	943	2,917	378,273	208.76	98.00	(16)	(55)	(8,137)	33	12	(94,054)
DISTRICT VI													
COCHISE	884	1,741	429	1,312	185,983	210.39	106.83	(15)	(54)	(6,089)	(39)	(75)	(54,469)
GRAHAM	315	627	185	442	70,533	223.91	112.49	(43)	(90)	(10,526)	(27)	(12)	(14,653)
GREENLEE	42	92	25	67	9,289	221.17	100.97	9	20	1,900	9	20	218
SANTA CRUZ	249	528	113	415	52,103	209.25	98.68	(7)	(21)	(2,850)	1	1	(14,275)
							CURRENT			PRIOR			
							CURRENT	MO.	CURRENT	PRIOR	MO.	PRIOR	
							MO. CASES	RECIP.	MO. DOLLARS	MO. CASES	RECIP.	MO. DOLLARS	
							PASQUAY/AQUI	310	893	94,310	20	57	3,255
							WM APACHE	712	1,972	218,224	6	21	1,443
							SALT RIVER	61	214	19,427	3	8	481
							SAN CARLOS	665	1,457	173,742	17	46	2,933
							HOPi	111	316	25,800	4	13	293
							TOTAL	1,859	4,852	\$531,503	50	145	\$8,405

1/EXCLUDES: PRIOR MONTH NET TOTALS OF: 935 CASES; 2,391 RECIPIENTS; \$248,088.
GRANT DIVERSION TOTALS OF: 233 CASES; \$206,969
ZERO PAY TOTALS OF 640 CASES; 2,136 RECIPIENTS.

CASES WITH GRANT UNDER \$100 (SEE TABLE 1B).

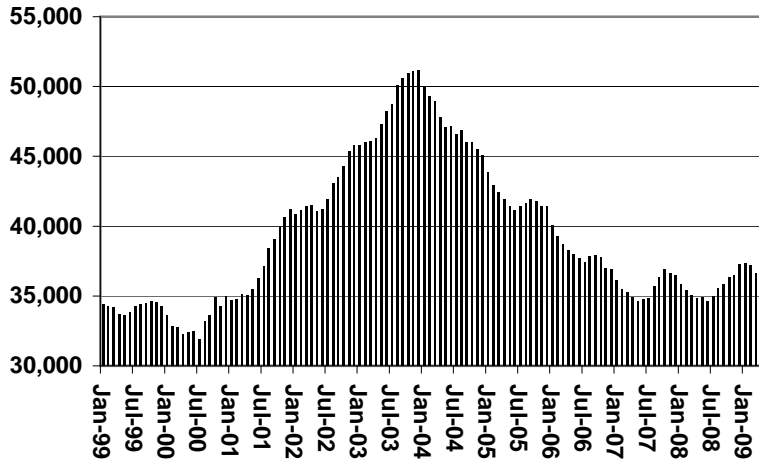
CHART 1

CASH ASSISTANCE PROGRAM

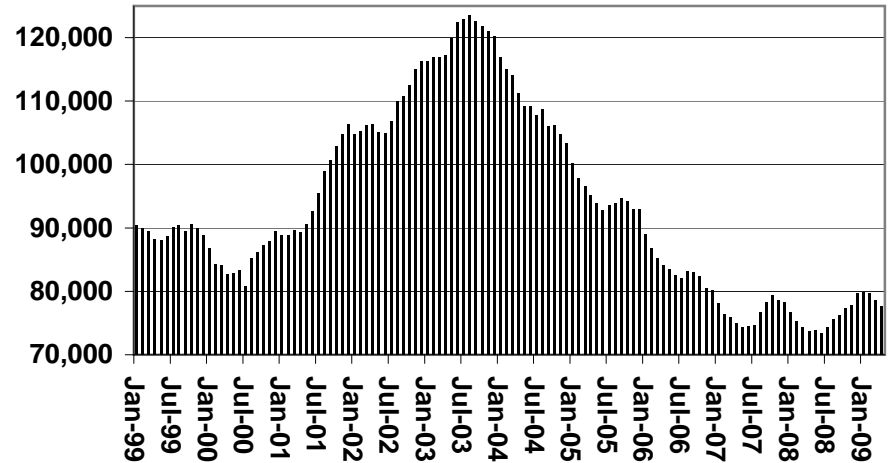
COMPARISON OF CASES, RECIPIENTS, PAYMENTS & AVERAGE PAYMENTS

FOR 1999, 2000, 2001, 2002, 2003, 2004, 2005, 2006, 2007, 2008, & 2009

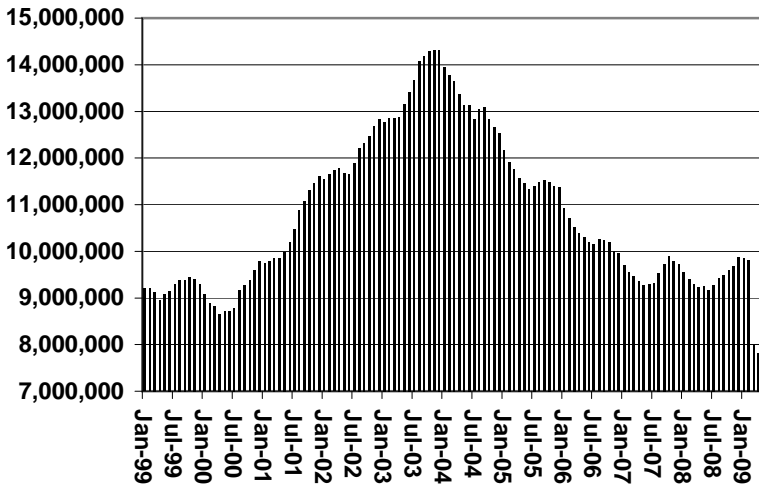
Cases



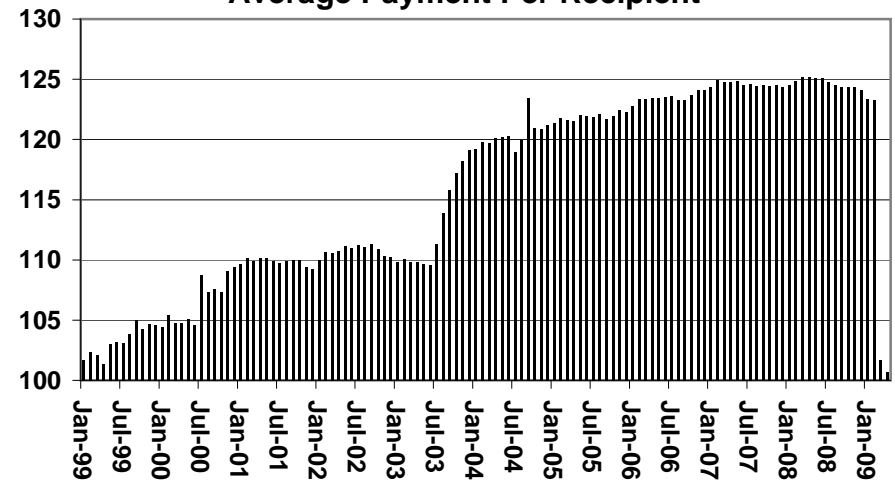
Recipients



Payments



Average Payment Per Recipient



**TABLE 1A
CA-UP**

CASH ASSISTANCE UNEMPLOYED PARENT PROGRAM: ARIZONA 1

	APRIL 2009							CHANGE FROM			APRIL 2008		
	FAMILIES (CASES)	PERSONS (RECIP.)	ADULTS	CHILDREN	TOTAL PAYMENTS	AVERAGE PAYMENT/ CASE	AVERAGE PAYMENT/ RECIP.	FAMILIES (CASES)	PERSONS (RECIP.)	TOTAL PAYMENTS	FAMILIES (CASES)	PERSONS (RECIP.)	TOTAL PAYMENTS
ARIZONA	1,451	5,089	1,939	3,150	425,603	293.32	83.63	(75)	(339)	(10,884)	661	2,241	150,154
DISTRICT I													
MARICOPA	897	3,003	1,002	2,001	257,596	287.18	85.78	(38)	(215)	(5,908)	532	1,794	134,566
DISTRICT II													
PIMA	262	981	429	552	80,783	308.33	82.35	(12)	(53)	(807)	131	476	33,914
DISTRICT III													
APACHE	0	0	0	0	0	0.00	0.00	(2)	(6)	(550)	(2)	(8)	(836)
COCONINO	7	26	10	16	2,302	328.86	88.54	0	(3)	43	2	8	517
NAVAJO	44	167	83	84	14,196	322.64	85.01	(11)	(38)	(3,325)	(48)	(218)	(21,293)
YAVAPAI	27	95	43	52	6,752	250.07	71.07	0	10	424	14	49	2,311
DISTRICT IV													
LA PAZ	3	13	4	9	952	317.33	73.23	(2)	(6)	(479)	(8)	(28)	(2,165)
MOHAVE	40	156	78	78	12,645	316.13	81.06	(5)	(14)	(661)	(7)	(33)	(5,261)
YUMA	19	68	30	38	5,797	305.11	85.25	(2)	(6)	(325)	7	23	1,701
DISTRICT V													
GILA	4	15	8	7	1,049	262.25	69.93	(3)	(12)	(825)	(25)	(76)	(8,578)
PINAL	107	428	192	236	32,021	299.26	74.82	(2)	(7)	191	47	193	11,849
DISTRICT VI													
COCHISE	26	85	36	49	7,403	284.73	87.09	1	10	1,479	11	36	2,113
GRAHAM	9	28	16	12	2,422	269.11	86.50	0	(4)	(224)	3	8	382
GREENLEE	1	4	2	2	335	335.00	83.75	(1)	(4)	(335)	1	4	335
SANTA CRUZ	5	20	6	14	1,350	270.00	67.50	2	9	418	3	13	599

1/EXCLUDES: PRIOR MONTH NET TOTALS OF: 126 CASES; 486 RECIPIENTS; \$51,372.
GRANT DIVERSION TOTALS OF: 0 CASES; \$0.
ZERO PAY TOTALS OF 61 CASES; 254 RECIPIENTS.

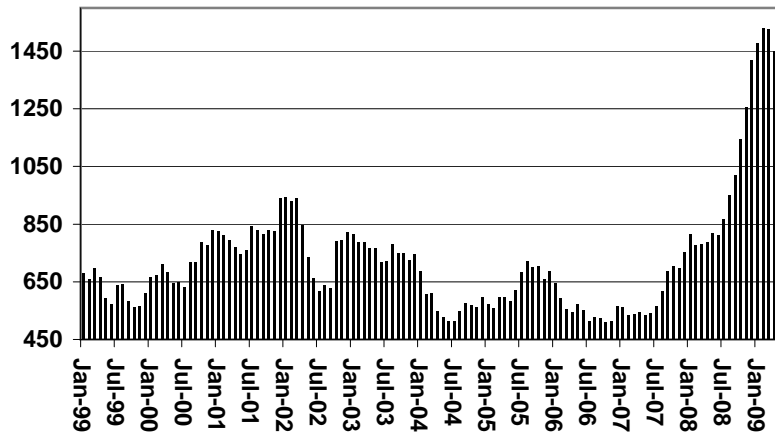
	CURRENT MO. CASES	CURRENT MO. RECIP.	CURRENT MO. DOLLARS	PRIOR MO. CASES	PRIOR MO. RECIP.	PRIOR MO. DOLLARS
PASQUAYUAQUI	17	71	6,220	2	8	522
WM APACHE	24	95	8,470	0	0	0
SALT RIVER	0	0	0	0	0	0
SAN CARLOS	0	0	0	0	0	0
HOPÍ	0	0	0	0	0	0
TOTAL	41	166	14,690	2	8	522

CASES WITH GRANT UNDER \$100 (SEE TABLE 1C).

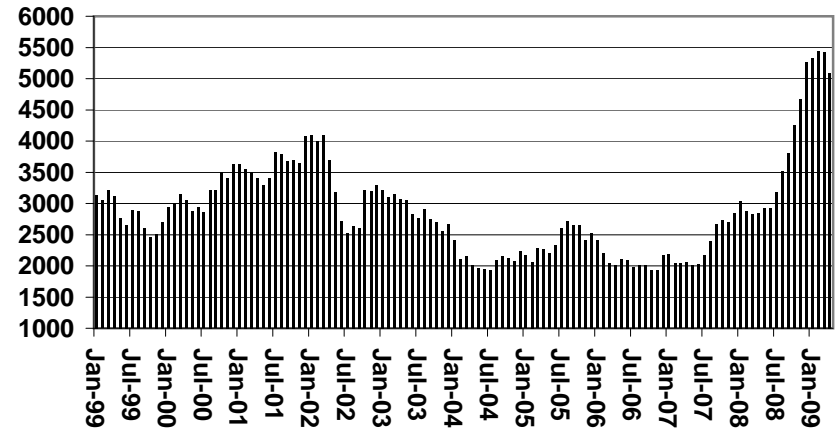
CHART 1A

CASH ASSISTANCE UNEMPLOYED PARENT PROGRAM COMPARISON OF CASES, RECIPIENTS, PAYMENTS & AVERAGE PAYMENTS FOR 1999, 2000, 2001, 2002, 2003, 2004, 2005, 2006, 2007, 2008, & 2009

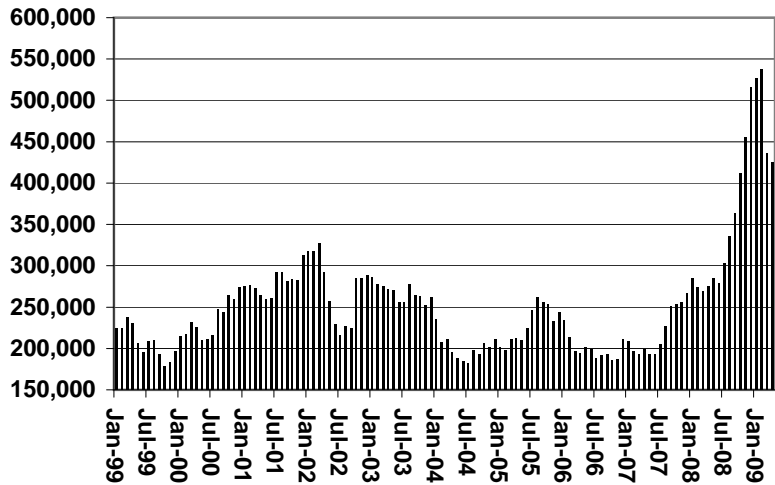
Cases



Recipients



Payments



Average Payment Per Recipient

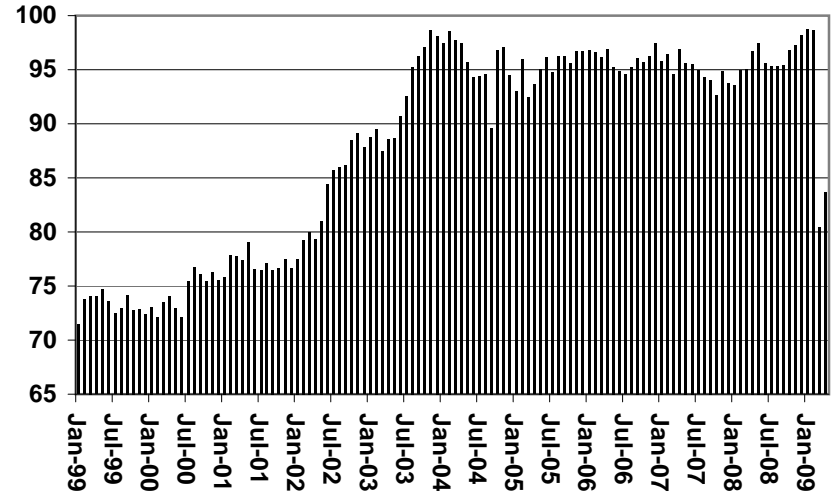


TABLE 1B 1/

CASH ASSISTANCE: ARIZONA
 CASES WITH GRANT UNDER \$100

	CHANGE FROM												
	APRIL 2009							MARCH 2009			APRIL 2008		
	FAMILIES (CASES)	PERSONS (RECIP.)	ADULTS	CHILDREN	TOTAL PAYMENTS	AVERAGE PAYMENT/ CASE	AVERAGE PAYMENT/ RECIP.	FAMILIES (CASES)	PERSONS (RECIP.)	TOTAL PAYMENTS	FAMILIES (CASES)	PERSONS (RECIP.)	TOTAL PAYMENTS
ARIZONA	958	1,923	526	1,397	63,923	66.73	33.24	(62)	(147)	(6,844)	285	565	15,389
DISTRICT I													
MARICOPA	591	1,200	303	897	38,222	64.67	31.85	(35)	(88)	(4,232)	238	487	13,849
DISTRICT II													
PIMA	126	238	78	160	8,898	70.62	37.39	(27)	(59)	(1,931)	(5)	(32)	(1,289)
DISTRICT III													
APACHE	0	0	0	0	0	0.00	0.00	(5)	(13)	(336)	(3)	(5)	(189)
COCONINO	7	19	7	12	455	65.00	23.95	2	7	112	(1)	4	(66)
NAVAJO	23	42	13	29	1,523	66.22	36.26	10	19	357	14	27	541
YAVAPAI	36	74	22	52	2,421	67.25	32.72	(1)	6	(80)	17	36	1,150
DISTRICT IV													
LA PAZ	8	12	7	5	677	84.63	56.42	5	6	366	(2)	(7)	130
MOHAVE	49	87	26	61	3,064	62.53	35.22	5	1	116	10	11	38
YUMA	24	51	16	35	1,952	81.33	38.27	0	7	(132)	4	6	530
DISTRICT V													
GILA	10	13	3	10	525	52.50	40.38	(1)	(6)	(229)	5	6	74
PINAL	48	105	29	76	3,429	71.44	32.66	(4)	(13)	(124)	16	27	880
DISTRICT VI													
COCHISE	19	37	10	27	1,616	85.05	43.68	(12)	(22)	(696)	(9)	(12)	(320)
GRAHAM	8	22	6	16	610	76.25	27.73	1	7	141	(2)	6	40
GREENLEE	0	0	0	0	0	0.00	0.00	0	0	0	(2)	(3)	(100)
SANTA CRUZ	9	23	6	17	531	59.00	23.09	0	1	(176)	5	14	121

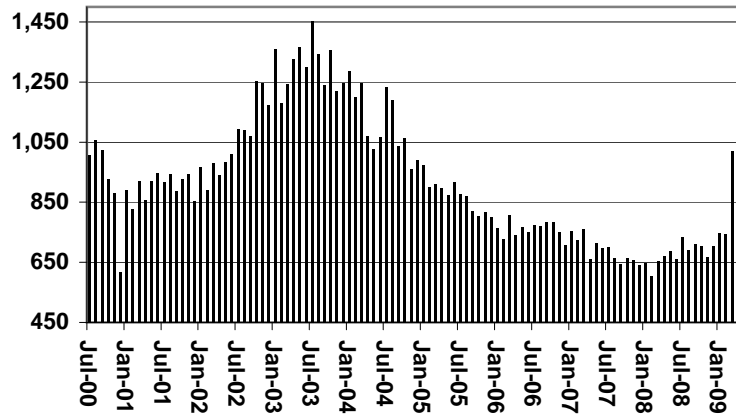
EXCLUDES: PRIOR MONTH NET TOTALS OF 758 CASES; 1,542 RECIPIENTS; \$48,826.

CHART 1B

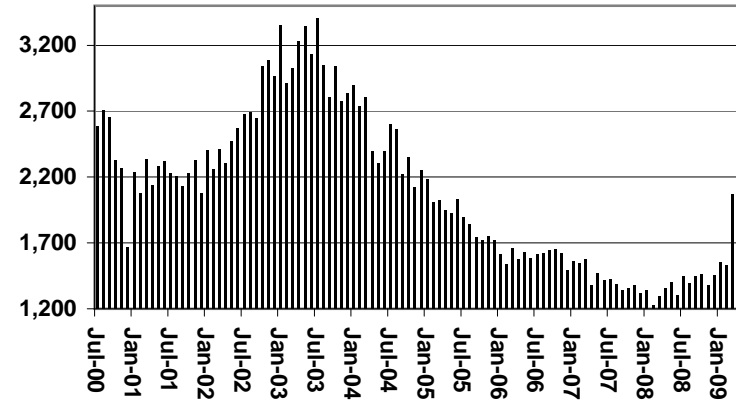
CASH ASSISTANCE PROGRAM CASES WITH GRANT UNDER \$100

FOR 1999, 2000, 2001, 2002, 2003, 2004, 2005, 2006, 2007, 2008, & 2009

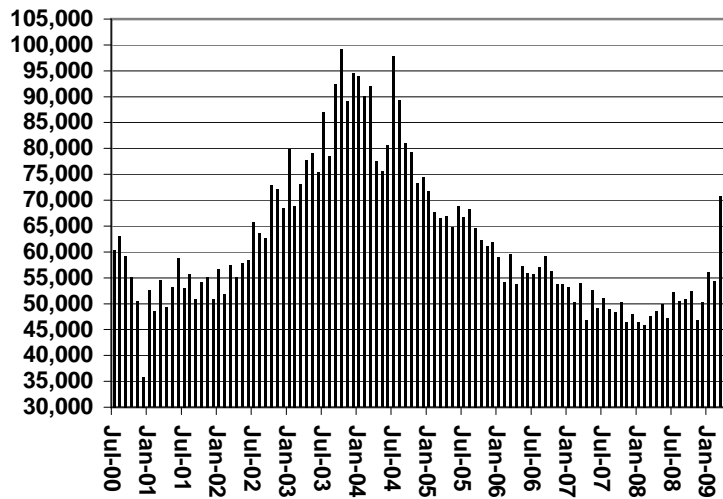
Cases



Recipients



Payments



Average Payment Per Recipient

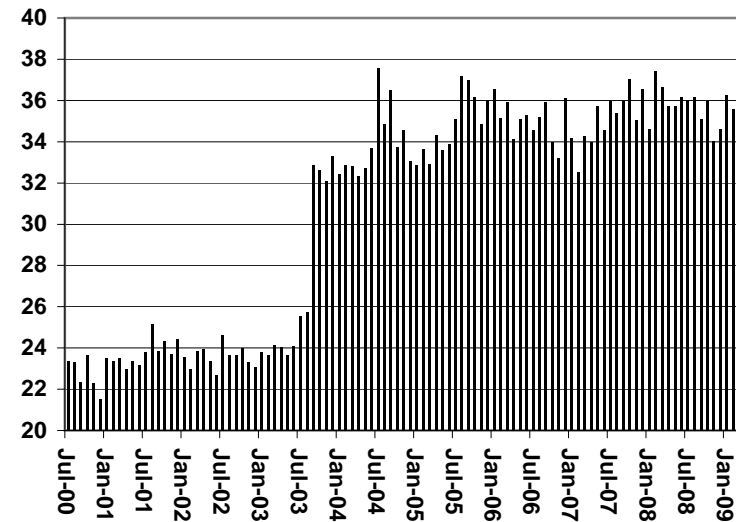


TABLE 1C 1/

CASH ASSISTANCE UNEMPLOYED PARENT PROGRAM: ARIZONA
CASES WITH GRANT UNDER \$100

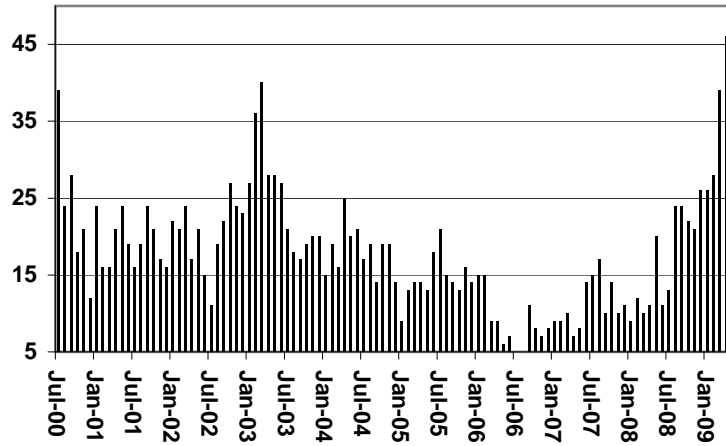
	CHANGE FROM												
	APRIL 2009							MARCH 2009			APRIL 2008		
	FAMILIES (CASES)	PERSONS (RECIP.)	ADULTS	CHILDREN	TOTAL PAYMENTS	AVERAGE PAYMENT/ CASE	AVERAGE PAYMENT/ RECIP.	FAMILIES (CASES)	PERSONS (RECIP.)	TOTAL PAYMENTS	FAMILIES (CASES)	PERSONS (RECIP.)	TOTAL PAYMENTS
ARIZONA	46	136	38	98	2,680	58.26	19.71	7	17	753	35	107	2,082
DISTRICT I													
MARICOPA	36	103	24	79	2,080	57.78	20.19	11	27	883	30	89	1,785
DISTRICT II													
PIMA	6	21	8	13	355	59.17	16.90	0	2	69	5	20	306
DISTRICT III													
APACHE	0	0	0	0	0	0.00	0.00	0	0	0	0	0	0
COCONINO	0	0	0	0	0	0.00	0.00	0	0	0	0	0	0
NAVAJO	0	0	0	0	0	0.00	0.00	(1)	(3)	(98)	0	0	0
YAVAPAI	0	0	0	0	0	0.00	0.00	(1)	(3)	(39)	(1)	(3)	(77)
DISTRICT IV													
LA PAZ	0	0	0	0	0	0.00	0.00	0	0	0	(1)	(4)	(39)
MOHAVE	1	3	2	1	88	88.00	29.33	(1)	(4)	(38)	1	3	88
YUMA	0	0	0	0	0	0.00	0.00	0	0	0	(1)	(5)	(64)
DISTRICT V													
GILA	0	0	0	0	0	0.00	0.00	0	0	0	(1)	(2)	(74)
PINAL	1	1	0	1	25	25.00	25.00	(2)	(7)	(73)	1	1	25
DISTRICT VI													
COCHISE	1	4	2	2	96	96.00	24.00	1	4	96	1	4	96
GRAHAM	1	4	2	2	36	36.00	9.00	1	4	36	1	4	36
GREENLEE	0	0	0	0	0	0.00	0.00	0	0	0	0	0	0
SANTA CRUZ	0	0	0	0	0	0.00	0.00	(1)	(3)	(83)	0	0	0

EXCLUDES: PRIOR MONTH NET TOTALS OF 89 CASES; 291 RECIPIENTS; \$4,609.

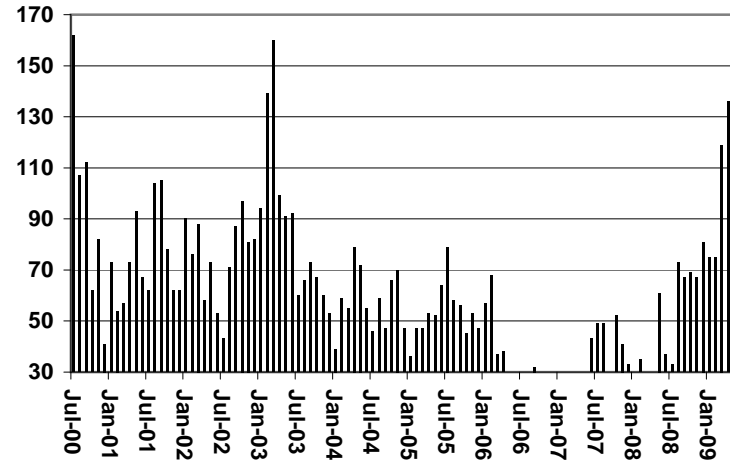
CHART 1C

CASH ASSISTANCE UNEMPLOYED PARENT PROGRAM CASES WITH GRANT UNDER \$100 FOR 1999, 2000, 2001, 2002, 2003, 2004, 2005, 2006, 2007, 2008, & 2009

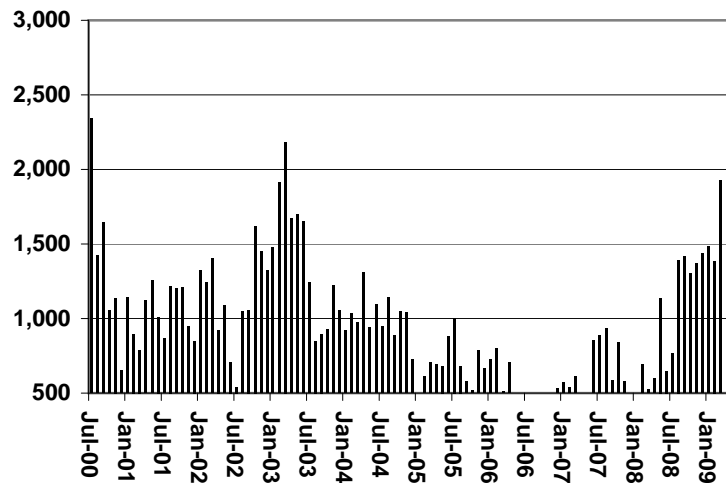
Cases



Recipients



Payments



Average Payment Per Recipient

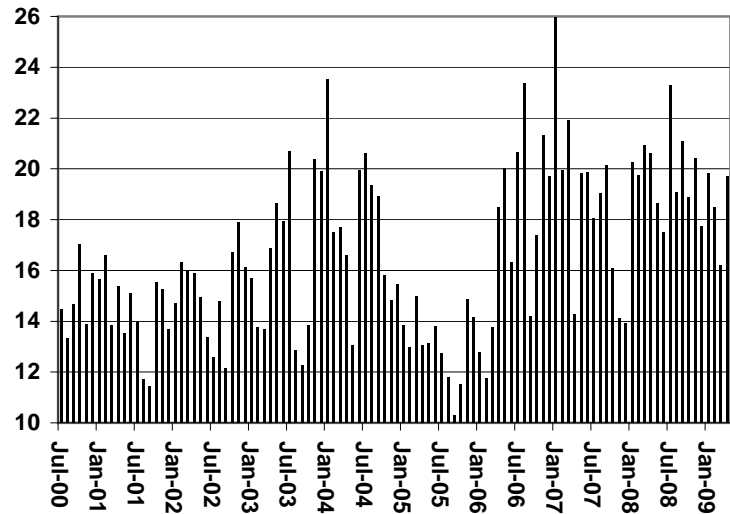


TABLE 4

TUBERCULOSIS CONTROL: ARIZONA 1/

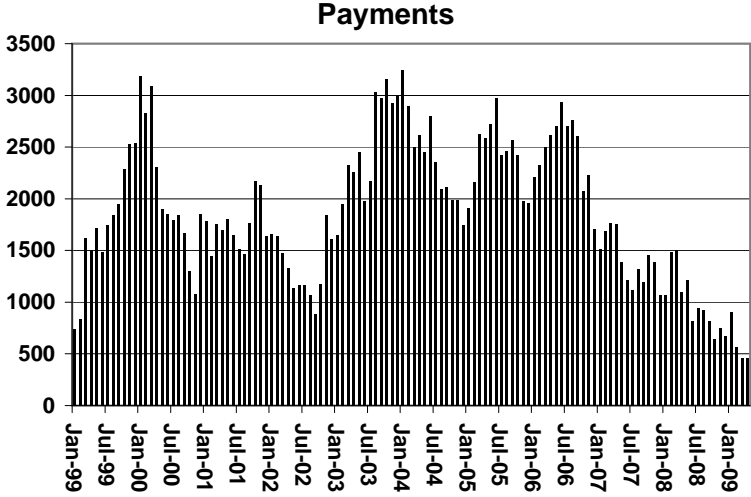
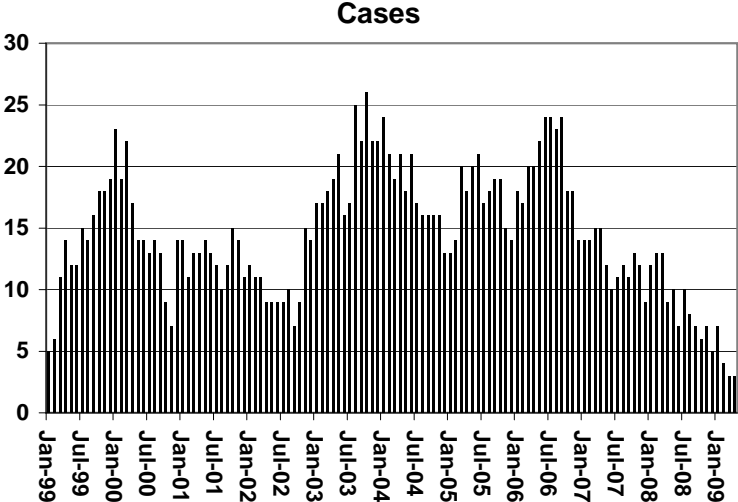
	APRIL 2009					CHANGE FROM					
						MARCH 2009			APRIL 2008		
	NUMBER OF CASES	PERSONS (RECIP.)	TOTAL PAYMENTS	AVERAGE PAYMENT/ CASE	AVERAGE PAYMENT/ RECIP.	NUMBER OF CASES	PERSONS (RECIP.)	TOTAL PAYMENTS	NUMBER OF CASES	PERSONS (RECIP.)	TOTAL PAYMENTS
ARIZONA	3	3	454	151.33	151.33	0	0	0	(6)	(6)	(648)
DISTRICT I											
MARICOPA	2	2	281	140.50	140.50	0	0	0	(6)	(6)	(713)
DISTRICT II											
PIMA	0	0	0	0.00	0.00	0	0	0	0	0	0
DISTRICT III	0	0	0	0	0.00	0	0	0	(1)	(1)	(108)
APACHE	0	0	0	0.00	0.00	0	0	0	0	0	0
COCONINO	0	0	0	0.00	0.00	0	0	0	0	0	0
NAVAJO	0	0	0	0.00	0.00	0	0	0	0	0	0
YAVAPAI	0	0	0	0.00	0.00	0	0	0	(1)	(1)	(108)
DISTRICT IV	1	1	173	173.00	173.00	0	0	0	1	1	173
LA PAZ	0	0	0	0.00	0.00	0	0	0	0	0	0
MOHAVE	0	0	0	0.00	0.00	0	0	0	0	0	0
YUMA	1	1	173	173.00	173.00	0	0	0	1	1	173
DISTRICT V	0	0	0	0.00	0.00	0	0	0	0	0	0
GILA	0	0	0	0.00	0.00	0	0	0	0	0	0
PINAL	0	0	0	0.00	0.00	0	0	0	0	0	0
DISTRICT VI	0	0	0	0.00	0.00	0	0	0	0	0	0
COCHISE	0	0	0	0.00	0.00	0	0	0	0	0	0
GRAHAM	0	0	0	0.00	0.00	0	0	0	0	0	0
GREENLEE	0	0	0	0.00	0.00	0	0	0	0	0	0
SANTA CRUZ	0	0	0	0.00	0.00	0	0	0	0	0	0

1/EXCLUDES: PRIOR MONTH NET TOTALS OF : 0 CASES; 0 RECIPIENTS; \$0.

CHART 4

TUBERCULOSIS CONTROL PROGRAM

COMPARISON OF CASES, PAYMENTS & AVERAGE PAYMENTS FOR 1999, 2000, 2001, 2002, 2003, 2004, 2005, 2006, 2007, 2008, & 2009



Average Payment Per Case

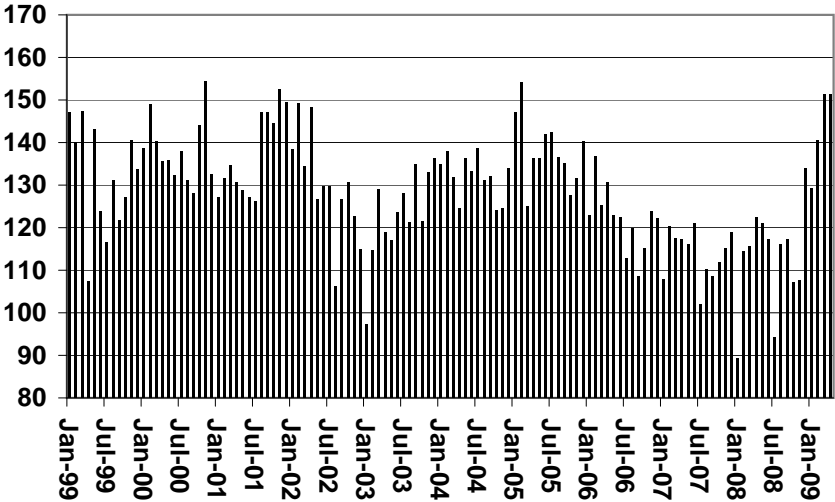


TABLE 6

SUPPLEMENTAL NUTRITION ASSISTANCE PROGRAM: ARIZONA 1

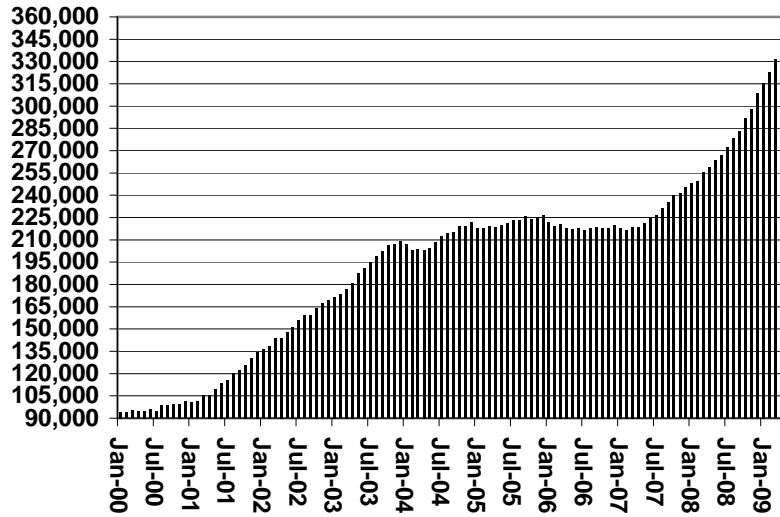
	CHANGE FROM											
	APRIL 2009					MARCH 2009			APRIL 2008			
	HOUSEHOLDS	PERSONS	TOTAL COUPON ISSUANCE	AVERAGE ALLOT./ HOUSEHOLD	AVERAGE ALLOT./ PERSON	HOUSEHOLDS	PERSONS	TOTAL COUPON ISSUANCE	HOUSEHOLDS	PERSONS	TOTAL COUPON ISSUANCE	
ARIZONA	339,881	812,359	107,907,287	317.49	132.83	8,488	21,115	18,596,874	80,880	185,804	44,871,692	
DISTRICT I												
MARICOPA	178,535	428,479	58,009,851	324.92	135.39	5,646	13,599	10,109,319	47,809	110,916	25,428,100	
DISTRICT II												
PIMA	58,378	130,378	17,412,316	298.27	133.55	1,158	2,899	2,985,528	12,193	25,265	6,815,111	
DISTRICT III												
APACHE	6,153	19,020	2,374,627	385.93	124.85	(832)	(1,861)	149,075	(206)	(435)	475,956	
COCONINO	7,467	20,883	2,648,922	354.75	126.85	149	425	459,341	1,497	3,727	1,009,081	
NAVAJO	12,877	35,044	4,419,680	343.22	126.12	1,093	2,698	964,384	2,969	7,303	1,726,955	
YAVAPAI	10,751	22,219	2,941,541	273.61	132.39	348	699	536,207	3,257	7,029	1,461,705	
DISTRICT IV												
LA PAZ	1,625	3,405	459,305	282.65	134.89	19	44	71,723	307	542	162,997	
MOHAVE	15,387	31,785	4,249,160	276.15	133.68	156	348	681,190	3,226	6,486	1,645,465	
YUMA	11,748	31,139	3,719,958	316.65	119.46	211	722	721,748	1,885	5,107	1,394,321	
DISTRICT V												
GILA	4,494	10,211	1,365,260	303.80	133.70	28	128	211,885	811	1,687	502,418	
PINAL	17,258	43,937	5,779,649	334.90	131.54	297	716	931,221	4,211	11,124	2,451,297	
DISTRICT VI												
COCHISE	8,572	18,902	2,409,974	281.14	127.50	72	186	395,824	1,359	2,919	867,181	
GRAHAM	2,635	6,398	828,431	314.40	129.48	(6)	112	131,864	465	1,159	328,804	
GREENLEE	386	851	108,058	279.94	126.98	24	51	23,478	147	364	59,034	
SANTA CRUZ	3,615	9,708	1,180,555	326.57	121.61	125	349	224,087	950	2,611	543,267	

1/EXCLUDES: PRIOR MONTH NET TOTALS OF : 10,236 CASES; 26,992 RECIPIENTS; \$1,682,130.
 AGED CANCELATIONS: 0 CASES; 0 RECIPIENTS; 0.
 SNAP COUPON CONVERSIONS: 0 CASES; 0 RECIPIENTS; \$0.
 SNAP REINSTATED: 0 CASES; \$0.
 SNAP ZERO PAY: 9,852 CASES; 40,241 RECIPIENTS.

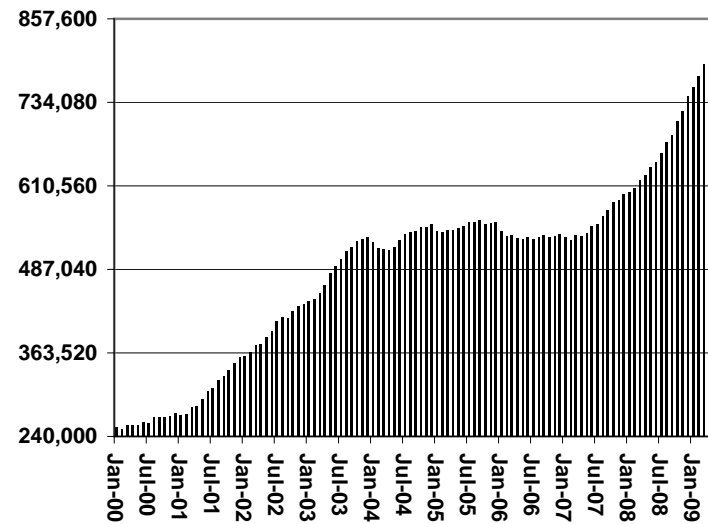
CHART 6

SUPPLEMENTAL NUTRITION ASSISTANCE PROGRAM (SNAP) COMPARISON OF HOUSEHOLDS, RECIPIENTS, PAYMENTS & AVERAGE PAYMENTS FOR 1999, 2000, 2001, 2002, 2003, 2004, 2005, 2006, 2007, 2008, & 2009

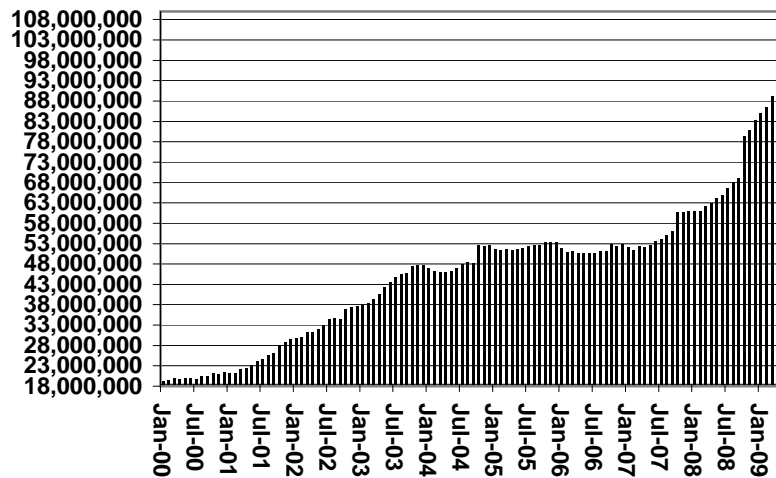
Households



Recipients



Payments



Average Payment Per Household

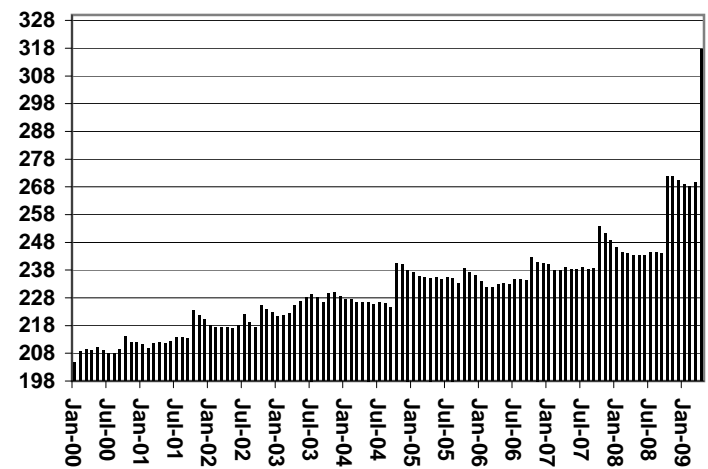


TABLE 7A

MEDICAL ASSISTANCE PROGRAM

RECIPIENTS

APRIL 2009

	SOBRA WOMAN 133% FPL	SOBRA CHILD	ADULT W/O CHILD 100% FPL	FOSTER CARE	1931 36% FPL	FEDERAL EMERGENCY SERVICES	INFANTS	ADULT W/O CHILD 40% FPL	MEDICAL W/SPEND DOWN	SOBRA WOMAN 100% FPL	SOBRA CHILD 100% FPL	TRANSITIONAL MEDICAL T1 - T4	1931 100% FPL	YATI	OTHER	TOTAL CASES
ARIZONA	11,110	63,161	44,504	11,226	313,844	88,364	47,525	115,838	5,630	3,930	193,056	39,683	96,729	287	25,475	1,060,362
DISTRICT I																
MARICOPA	5,733	35,684	19,995	5,703	172,839	69,005	28,048	55,127	3,047	2,017	110,445	19,113	47,219	159	12,723	586,857
DISTRICT II																
PIMA	1,736	9,560	8,331	3,174	46,515	10,520	6,795	20,438	800	573	28,869	6,416	16,483	81	4,488	164,779
DISTRICT III	1,326	6,773	5,933	759	38,186	2,644	4,757	17,010	676	514	18,669	4,243	11,806	22	2,444	115,762
APACHE	208	1,272	1,083	41	10,901	113	989	4,152	100	95	4,023	801	2,488	2	361	26,629
COCONINO	327	1,398	1,229	138	7,959	558	1,129	3,539	111	122	4,315	1,015	2,524	5	390	24,759
NAVAJO	352	2,275	1,531	133	12,162	369	1,375	5,343	188	168	5,300	1,205	3,542	3	597	34,543
YAVAPAI	439	1,828	2,090	447	7,164	1,604	1,264	3,976	277	129	5,031	1,222	3,252	12	1,096	29,831
DISTRICT IV	1,078	4,694	4,840	544	22,404	2,887	3,523	10,270	613	379	16,343	6,050	10,056	4	2,863	86,548
LA PAZ	36	218	215	8	1,235	182	158	689	29	11	665	159	366	0	160	4,131
MOHAVE	453	2,127	2,399	268	11,085	896	1,529	6,233	407	181	7,363	1,740	4,545	2	1,408	40,636
YUMA	589	2,349	2,226	268	10,084	1,809	1,836	3,348	177	187	8,315	4,151	5,145	2	1,295	41,781
DISTRICT V	711	4,277	2,695	675	21,081	1,961	2,633	8,409	255	252	10,701	2,000	6,022	16	1,557	63,245
GILA	145	665	607	81	4,235	163	504	2,215	82	51	1,927	309	1,257	0	320	12,561
PINAL	566	3,612	2,088	594	16,846	1,798	2,129	6,194	173	201	8,774	1,691	4,765	16	1,237	50,684
DISTRICT VI	526	2,173	2,710	371	12,819	1,347	1,769	4,584	239	195	8,029	1,861	5,143	5	1,400	43,171
COCHISE	244	1,152	1,447	255	6,730	677	843	2,585	126	90	3,761	883	2,565	5	786	22,149
GRAHAM	133	459	449	76	2,543	56	406	1,070	51	38	1,312	299	855	0	147	7,894
GREENLEE	24	54	54	6	374	11	61	142	10	7	160	25	89	0	20	1,037
SANTA CRUZ	125	508	760	34	3,172	603	459	787	52	60	2,796	654	1,634	0	447	12,091

TABLE 7B

MEDICAL ASSISTANCE PROGRAM

RECIPIENTS

CHANGE FROM

MARCH 2009

	SOBRA WOMAN 133% FPL	SOBRA CHILD	ADULT W/O CHILD 100% FPL	FOSTER CARE	1931 36% FPL	FEDERAL EMERGENCY SERVICES	INFANTS	ADULT W/O CHILD 40% FPL	MEDICAL W/SPEND DOWN	SOBRA WOMAN 100% FPL	SOBRA CHILD 100% FPL	TRANSITIONAL MEDICAL T1 - T4	1931 100% FPL	YATI	OTHER	TOTAL CASES
ARIZONA	(357)	(1,494)	504	84	3,935	615	(554)	3,469	(40)	260	6,743	(2,722)	3,888	3	(564)	13,770
DISTRICT I																
MARICOPA	(185)	(818)	443	43	2,804	579	(403)	2,147	91	149	4,083	(1,183)	2,277	9	(235)	9,801
DISTRICT II																
PIMA	(39)	(192)	34	16	283	(63)	(1)	410	(16)	2	900	(641)	537	(4)	(117)	1,109
DISTRICT III																
APACHE	(5)	(81)	(37)	(1)	(99)	4	16	67	0	16	112	(44)	54	0	(20)	(18)
COCONINO	(13)	(30)	19	4	66	(1)	(14)	90	(13)	9	136	(36)	72	0	(20)	269
NAVAJO	(37)	9	(14)	1	190	6	(7)	206	3	1	90	(136)	105	(1)	(27)	389
YAVAPAI	(16)	(46)	33	5	155	37	10	175	(18)	14	132	21	45	(1)	(19)	527
DISTRICT IV																
LA PAZ	1	(14)	1	0	2	12	0	19	(7)	2	23	(2)	13	0	(10)	40
MOHAVE	(19)	(62)	48	(1)	72	(1)	(23)	142	(28)	6	148	(90)	88	(1)	(8)	271
YUMA	(12)	(65)	(3)	6	126	56	(82)	18	(16)	14	389	(294)	273	0	(43)	367
DISTRICT V																
GILA	(2)	(6)	(5)	(2)	(44)	(6)	0	1	(19)	7	35	(59)	61	0	(16)	(55)
PINAL	(11)	(119)	(15)	15	214	15	(53)	96	(9)	22	405	(99)	152	1	(16)	598
DISTRICT VI																
COCHISE	(13)	(15)	17	(6)	108	(15)	(10)	49	(16)	9	71	(71)	81	0	(17)	172
GRAHAM	(4)	(21)	22	0	21	(2)	10	11	10	0	115	(60)	40	0	(1)	141
GREENLEE	0	8	4	0	53	1	(1)	7	0	1	0	(1)	(1)	0	3	74
SANTA CRUZ	(2)	(42)	(43)	4	(16)	(7)	4	31	(2)	8	104	(27)	91	0	(18)	85

TABLE 7C

MEDICAL ASSISTANCE PROGRAM

RECIPIENTS

CHANGE FROM

APRIL 2008

	SOBRA WOMAN 133% FPL	SOBRA CHILD	ADULT W/O CHILD 100% FPL	FOSTER CARE	1931 36% FPL	FEDERAL EMERGENCY SERVICES	INFANTS	ADULT W/O CHILD 40% FPL	MEDICAL W/SPEND DOWN	SOBRA WOMAN 100% FPL	SOBRA CHILD 100% FPL	TRANSITIONAL MEDICAL T1 - T4	3E 1931 100% FPL	YATI	OTHER	TOTAL CASES
ARIZONA	(580)	1,031	5,179	1,252	47,985	3,319	(2,451)	18,811	388	385	27,232	(3,267)	17,107	41	2,294	118,726
DISTRICT I																
MARICOPA	(237)	832	3,028	719	32,079	3,328	(1,942)	11,717	299	219	17,139	(1,282)	9,961	35	1,281	77,176
DISTRICT II																
PIMA	(64)	(27)	584	333	5,231	(71)	(218)	2,251	15	5	2,939	(573)	1,960	6	313	12,684
DISTRICT III																
APACHE	(53)	(132)	180	1	381	15	41	(132)	58	10	365	(85)	308	0	(2)	955
COCONINO	(43)	(65)	(16)	22	536	8	(86)	428	8	22	682	(135)	332	(3)	26	1,716
NAVAJO	(18)	242	213	17	839	39	(62)	455	26	56	667	(56)	605	2	48	3,073
YAVAPAI	21	23	310	17	1,589	(8)	(58)	943	71	9	838	(85)	681	0	143	4,494
DISTRICT IV																
LA PAZ	(3)	12	(3)	(7)	94	(12)	(19)	140	(8)	(10)	32	(44)	24	(1)	14	209
MOHAVE	(97)	71	325	27	1,445	25	(36)	1,151	57	8	895	(146)	774	0	167	4,666
YUMA	(4)	(24)	49	15	935	(157)	(62)	138	(24)	4	614	73	496	2	87	2,142
DISTRICT V																
GILA	(65)	(55)	263	87	3,252	99	(33)	1,238	(115)	48	2,170	(492)	1,257	1	121	7,776
PINAL	4	(44)	35	(1)	372	22	26	233	(16)	17	337	(180)	262	(2)	26	1,091
	(69)	(11)	228	88	2,880	77	(59)	1,005	(99)	31	1,833	(312)	995	3	95	6,685
DISTRICT VI																
COCHISE	(3)	157	104	7	574	10	(33)	155	(12)	(2)	210	(203)	284	(1)	32	1,279
GRAHAM	(10)	39	49	15	500	(12)	32	199	25	8	221	(121)	154	0	18	1,117
GREENLEE	0	21	13	(5)	110	0	4	35	4	5	53	(26)	29	0	(6)	237
SANTA CRUZ	(4)	(63)	80	4	420	55	21	93	(16)	3	407	(92)	242	0	52	1,202

CHART 7

MEDICAL ASSISTANCE PROGRAM

COMPARISON OF RECIPIENTS

FOR 1999, 2000, 2001, 2002, 2003, 2004, 2005, 2006, 2007, 2008, & 2009

Total Recipients

