

TABLE 4

ARIZONA 1/

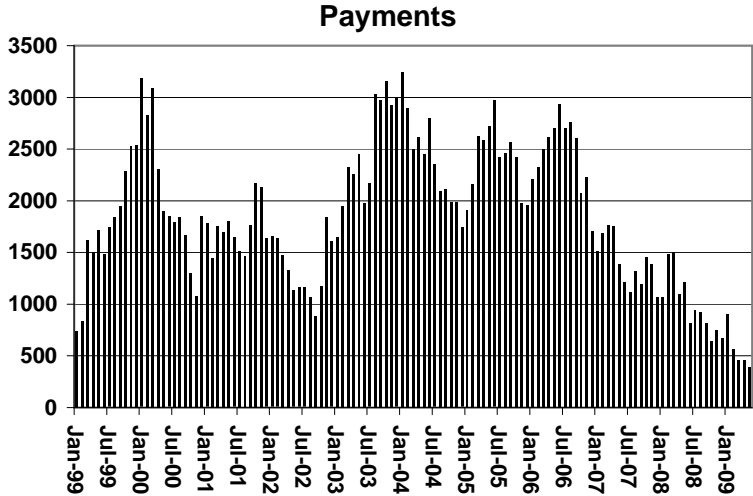
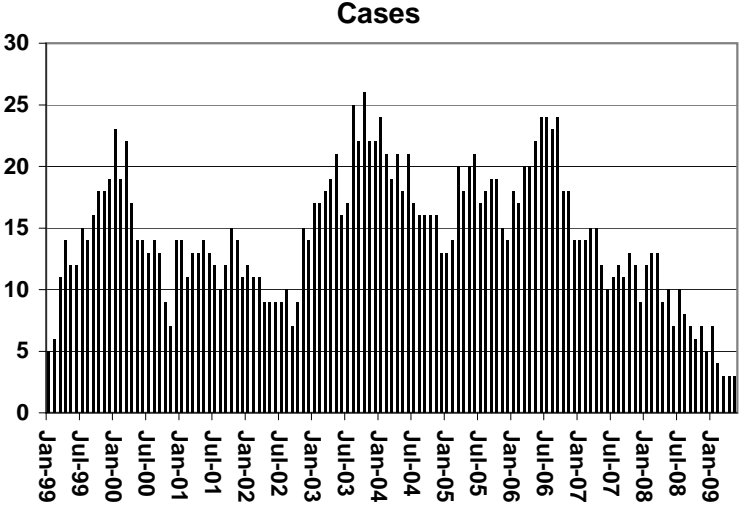
TUBERCULOSIS CONTROL:

	MAY 2009					APRIL 2009			MAY 2008			
	NUMBER OF CASES	PERSONS (RECIP.)	TOTAL PAYMENTS	AVERAGE PAYMENT/ CASE	AVERAGE PAYMENT/ RECIP.	NUMBER OF CASES	PERSONS (RECIP.)	TOTAL PAYMENTS	CHANGE FROM	NUMBER OF CASES	PERSONS (RECIP.)	TOTAL PAYMENTS
ARIZONA	3	3	391	130.33	130.33	0	0	(63)		(7)	(7)	(819)
DISTRICT I	1	1	173	173.00	173.00	(1)	(1)	(108)		(8)	(8)	(929)
MARICOPA												
DISTRICT II	0	0	0	0.00	0.00	0	0	0		0	0	0
PIMA	0	0	0	0.00	0.00	0	0	0		(1)	(1)	(108)
DISTRICT III	0	0	0	0.00	0.00	0	0	0		0	0	0
APACHE	0	0	0	0.00	0.00	0	0	0		0	0	0
COCONINO	0	0	0	0.00	0.00	0	0	0		0	0	0
NAVAJO	0	0	0	0.00	0.00	0	0	0		(1)	(1)	(108)
YAVAPAI												
DISTRICT IV	1	1	173	173.00	173.00	0	0	0		1	1	173
LA PAZ	0	0	0	0.00	0.00	0	0	0		0	0	0
MOHAVE	0	0	0	0.00	0.00	0	0	0		0	0	0
YUMA	1	1	173	173.00	173.00	0	0	0		1	1	173
DISTRICT V	0	0	0	0.00	0.00	0	0	0		0	0	0
GILA	0	0	0	0.00	0.00	0	0	0		0	0	0
PINAL	0	0	0	0.00	0.00	0	0	0		0	0	0
DISTRICT VI	1	1	45	45.00	45.00	1	1	45		1	1	45
COCHISE	1	1	45	45.00	45.00	1	1	45		1	1	45
GRAHAM	0	0	0	0.00	0.00	0	0	0		0	0	0
GREENLEE	0	0	0	0.00	0.00	0	0	0		0	0	0
SANTA CRUZ	0	0	0	0.00	0.00	0	0	0		0	0	0

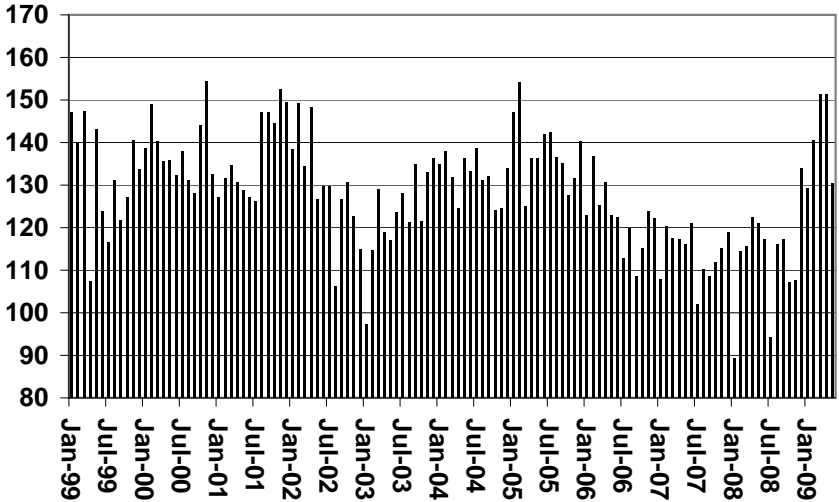
1/EXCLUDES: PRIOR MONTH NET TOTALS OF : 0 CASES; 0 RECIPIENTS; \$0.

CHART 4

TUBERCULOSIS CONTROL PROGRAM COMPARISON OF CASES, PAYMENTS & AVERAGE PAYMENTS FOR 1999, 2000, 2001, 2002, 2003, 2004, 2005, 2006, 2007, 2008, & 2009



Average Payment Per Case



ARIZONA 1

TABLE 6

SUPPLEMENTAL NUTRITION ASSISTANCE PROGRAM:

CHANGE FROM

MAY 2009

APRIL 2009

MAY 2008

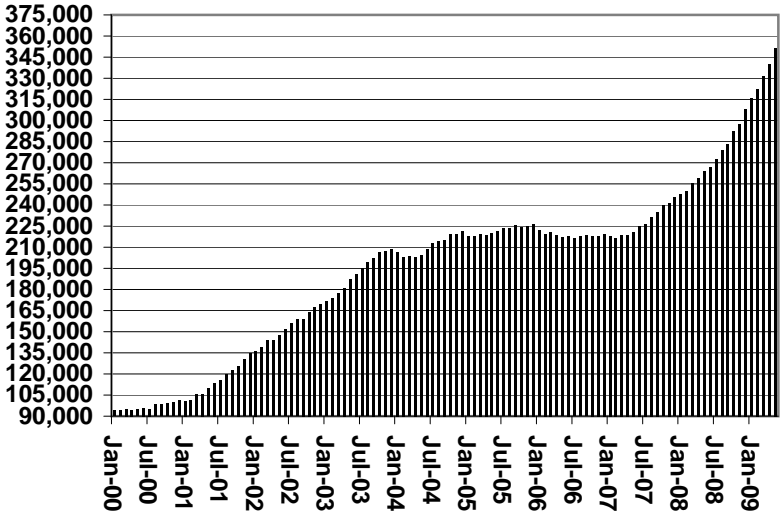
	HOUSEHOLDS	PERSONS	TOTAL COUPON ISSUANCE	AVERAGE ALLOT./ HOUSEHOLD	AVERAGE ALLOT./ PERSON	HOUSEHOLDS	PERSONS	TOTAL COUPON ISSUANCE	HOUSEHOLDS	PERSONS	TOTAL COUPON ISSUANCE
ARIZONA	351,508	839,878	111,188,277	316.32	132.39	11,627	27,519	3,280,990	87,809	201,098	47,088,024
DISTRICT I											
MARICOP A	185,459	444,664	59,976,738	323.40	134.88	6,924	16,185	1,966,887	52,673	121,135	26,853,284
DISTRICT II											
PIM A	60,185	134,194	17,878,191	297.05	133.23	1,807	3,816	465,875	13,041	27,177	7,154,078
DISTRICT III											
APACHE	6,141	19,026	2,370,651	386.04	124.60	(12)	6	(3,976)	(361)	(682)	450,147
COCONINO	7,661	21,325	2,698,880	352.29	126.56	194	442	49,958	1,631	4,036	1,057,540
NAVAJO	13,087	35,523	4,453,915	340.33	125.38	210	479	34,235	3,128	7,829	1,774,815
YAVAPAI	11,083	23,047	3,009,281	271.52	130.57	332	828	67,740	3,503	7,700	1,515,455
DISTRICT IV											
LA PAZ	1,652	3,479	466,113	282.15	133.98	27	74	6,808	323	595	168,267
MOHAVE	15,702	32,244	4,279,617	272.55	132.73	315	459	30,457	3,341	6,546	1,654,390
YUM A	12,460	33,432	4,035,815	323.90	120.72	712	2,293	315,857	1,999	5,285	1,456,121
DISTRICT V											
GIL A	4,598	10,437	1,394,658	303.32	133.63	104	226	29,398	896	1,884	535,041
PINAL	17,982	45,777	5,992,785	333.27	130.91	724	1,840	213,136	4,614	11,989	2,590,459
DISTRICT VI											
COCHISE	8,584	18,905	2,413,061	281.11	127.64	12	3	3,087	1,262	2,752	849,439
GRAHAM	2,659	6,492	833,449	313.44	128.38	24	94	5,018	431	1,208	328,590
GREENLEE	446	1,031	129,951	291.37	126.04	60	180	21,893	205	535	81,119
SANTA CRUZ	3,809	10,302	1,255,172	329.53	121.84	194	594	74,617	1,123	3,109	619,279

1/EXCLUDES: PRIOR MONTH NET TOTALS OF : 10,814 CASES; 28,624 RECIPIENTS; \$1,971,507.
 AGED CANCELATIONS: 7,404 CASES; 9,562 RECIPIENTS; \$313,172.55.
 SNAP COUPON CONVERSIONS: 0 CASES; 0 RECIPIENTS; \$0.
 SNAP REINSTATED: 0 CASES; \$0.
 SNAP ZERO PAY: 10,190 CASES; 41,623 RECIPIENTS.

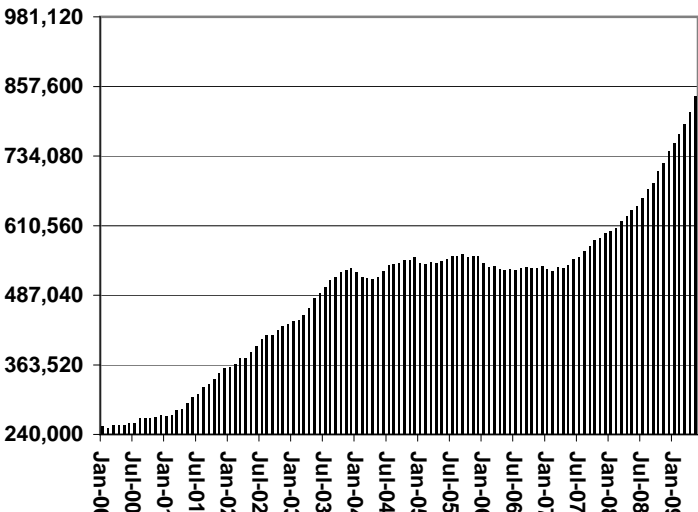
CHART 6

SUPPLEMENTAL NUTRITION ASSISTANCE PROGRAM (SNAP) COMPARISON OF HOUSEHOLDS, RECIPIENTS, PAYMENTS & AVERAGE PAYMENTS FOR 1999, 2000, 2001, 2002, 2003, 2004, 2005, 2006, 2007, 2008, & 2009

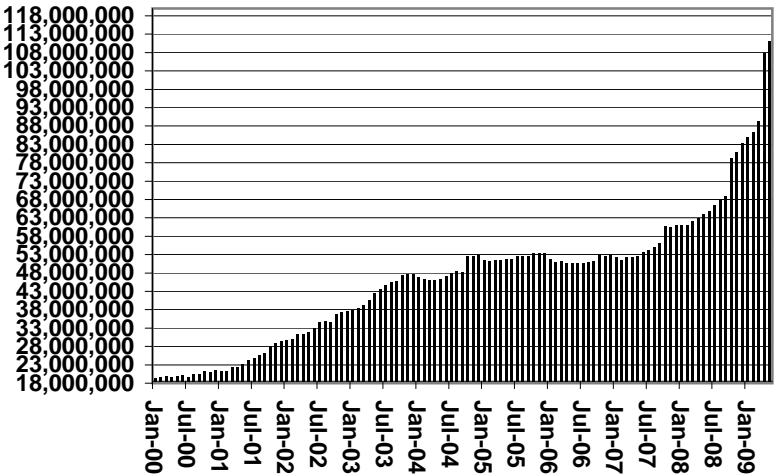
Households



Recipients



Payments



Average Payment Per Household

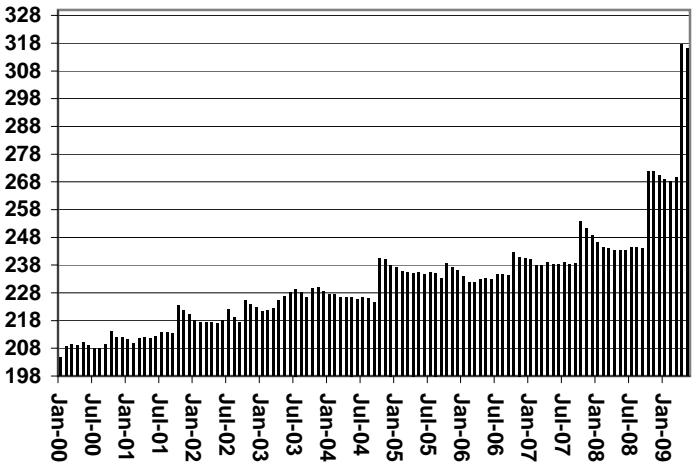


TABLE 7A
MEDICAL ASSISTANCE PROGRAM

RECIPIENTS

MAY 2009

	SOBRA WOMAN 133% FPL	SOBRA CHILD	ADULT W/O CHILD 100% FPL	FOSTER CARE	1931 36% FPL	FEDERAL EMERGENCY SERVICES	INFANTS	ADULT W/O CHILD 40% FPL	MEDICAL W/SPEND DOWN	SOBRA WOMAN 100% FPL	SOBRA CHILD 100% FPL	TRANSITIONAL MEDICAL T1 - T4	1931 100% FPL	YATI	OTHER	TOTAL CASES
ARIZONA	11,059	63,470	46,072	11,370	320,762	89,976	48,034	120,566	6,135	4,007	200,360	37,337	100,954	281	25,084	1,085,467
DISTRICT I																
MARICOPA	5,703	35,912	20,958	5,767	176,806	70,407	28,302	58,050	3,435	2,019	114,953	18,444	49,452	160	12,556	602,924
DISTRICT II																
PIMA	1,723	9,666	8,609	3,198	47,433	10,522	6,871	21,234	829	575	29,698	5,945	17,162	72	4,392	167,929
DISTRICT III																
APACHE	219	1,264	1,040	46	10,948	117	1,001	4,210	92	97	4,160	722	2,539	2	345	26,802
COCONINO	309	1,371	1,249	138	8,019	570	1,142	3,595	123	128	4,426	980	2,559	6	382	24,997
NAVAJO	339	2,239	1,526	132	12,295	366	1,393	5,430	179	159	5,425	1,106	3,594	2	581	34,766
YAVAPAI	434	1,798	2,149	457	7,293	1,637	1,310	4,062	283	137	5,293	1,201	3,432	12	1,085	30,583
DISTRICT IV																
LA PAZ	32	207	236	8	1,251	186	159	683	28	12	666	144	366	0	157	4,135
MOHAVE	472	2,107	2,449	275	11,116	874	1,521	6,339	407	191	7,625	1,693	4,696	2	1,389	41,156
YUMA	593	2,404	2,387	277	11,118	1,947	1,863	3,548	201	214	8,897	3,235	5,579	6	1,263	43,532
DISTRICT V																
GILA	142	676	637	88	4,283	162	512	2,254	86	50	1,938	299	1,285	0	328	12,740
PINAL	577	3,668	2,149	611	17,178	1,841	2,153	6,466	226	212	9,082	1,688	5,000	14	1,214	52,079
DISTRICT VI																
COCHISE	262	1,139	1,435	258	6,766	668	861	2,654	121	100	3,838	919	2,580	5	779	22,385
GRAHAM	121	450	448	76	2,632	65	408	1,079	59	45	1,350	283	912	0	150	8,078
GREENLEE	22	58	60	6	422	8	58	155	11	5	198	26	108	0	19	1,156
SANTA CRUZ	111	511	740	33	3,202	606	480	807	55	63	2,811	652	1,690	0	444	12,205

TABLE 7B

MEDICAL ASSISTANCE PROGRAM

RECIPIENTS

CHANGE FROM

APRIL 2009

	SOBRA WOMAN 133% FPL	SOBRA CHILD	ADULT W/O CHILD 100% FPL	FOSTER CARE	1931 36% FPL	FEDERAL EMERGENCY SERVICES	INFANTS	ADULT W/O CHILD 40% FPL	MEDICAL W/SPEND DOWN	SOBRA WOMAN 100% FPL	SOBRA CHILD 100% FPL	TRANSITIONAL MEDICAL T1 - T4	1931 100% FPL	YATI	OTHER	TOTAL CASES
ARIZONA	(51)	309	1,568	144	6,918	1,612	509	4,728	505	77	7,304	(2,346)	4,225	(6)	(391)	25,105
DISTRICT I																
MARICOPA	(30)	228	963	64	3,967	1,402	254	2,923	388	2	4,508	(669)	2,233	1	(167)	16,067
DISTRICT II																
PIMA	(13)	106	278	24	918	2	76	796	29	2	829	(471)	679	(9)	(96)	3,150
DISTRICT III	(25)	(101)	31	14	369	46	89	287	1	7	635	(234)	318	0	(51)	1,386
APACHE	11	(8)	(43)	5	47	4	12	58	(8)	2	137	(79)	51	0	(16)	173
COCONINO	(18)	(27)	20	0	60	12	13	56	12	6	111	(35)	35	1	(8)	238
NAVAJO	(13)	(36)	(5)	(1)	133	(3)	18	87	(9)	(9)	125	(99)	52	(1)	(16)	223
YAVAPAI	(5)	(30)	59	10	129	33	46	86	6	8	262	(21)	180	0	(11)	752
DISTRICT IV	19	24	232	16	1,081	120	20	300	23	38	845	(978)	585	4	(54)	2,275
LA PAZ	(4)	(11)	21	0	16	4	1	(6)	(1)	1	1	(15)	0	0	(3)	4
MOHAVE	19	(20)	50	7	31	(22)	(8)	106	0	10	262	(47)	151	0	(19)	520
YUMA	4	55	161	9	1,034	138	27	200	24	27	582	(916)	434	4	(32)	1,751
DISTRICT V	8	67	91	24	380	42	32	311	57	10	319	(13)	263	(2)	(15)	1,574
GILA	(3)	11	30	7	48	(1)	8	39	4	(1)	11	(10)	28	0	8	179
PINAL	11	56	61	17	332	43	24	272	53	11	308	(3)	235	(2)	(23)	1,395
DISTRICT VI	(10)	(15)	(27)	2	203	0	38	111	7	18	168	19	147	0	(8)	653
COCHISE	18	(13)	(12)	3	36	(9)	18	69	(5)	10	77	36	15	0	(7)	236
GRAHAM	(12)	(9)	(1)	0	89	9	2	9	8	7	38	(16)	57	0	3	184
GREENLEE	(2)	4	6	0	48	(3)	(3)	13	1	(2)	38	1	19	0	(1)	119
SANTA CRUZ	(14)	3	(20)	(1)	30	3	21	20	3	3	15	(2)	56	0	(3)	114

TABLE 7C
MEDICAL ASSISTANCE PROGRAM
RECIPIENTS

CHANGE FROM
MAY 2008

	SOBRA WOMAN 133% FPL	SOBRA CHILD	ADULT W/O CHILD 100% FPL	FOSTER CARE	1931 36% FPL	FEDERAL EMERGENCY SERVICES	INFANTS	ADULT W/O CHILD 40% FPL	MEDICAL W/SPEND DOWN	SOBRA WOMAN 100% FPL	SOBRA CHILD 100% FPL	TRANSITIONAL MEDICAL T1 - T4	3E 1931 100% FPL	YATI	OTHER	TOTAL CASES
ARIZONA	(623)	1,675	6,627	1,231	53,630	5,787	(2,029)	23,038	1,111	487	32,946	(4,529)	20,266	31	2,195	141,843
DISTRICT I																
MARICOPA	(313)	1,128	3,856	694	35,149	5,310	(1,782)	14,389	713	246	20,962	(1,620)	11,641	31	1,241	91,645
DISTRICT II																
PIMA	(58)	91	795	342	6,250	87	(138)	2,995	100	9	3,455	(988)	2,484	(2)	303	15,725
DISTRICT III	(82)	143	831	32	4,149	160	(78)	1,968	216	114	3,084	(671)	2,192	(1)	192	12,249
APACHE	(29)	(125)	177	3	601	18	48	(49)	50	23	457	(244)	341	0	(16)	1,255
COCONINO	(48)	(26)	39	19	724	16	(58)	500	27	29	716	(115)	348	(1)	28	2,198
NAVAJO	(25)	226	228	9	1,126	39	(53)	511	53	34	811	(193)	667	0	42	3,475
YAVAPAI	20	68	387	1	1,698	87	(15)	1,006	86	28	1,100	(119)	836	0	138	5,321
DISTRICT IV	(77)	84	519	39	2,672	(29)	(84)	1,582	68	27	2,107	(333)	1,650	4	222	8,451
LA PAZ	(8)	1	26	(7)	124	12	(21)	138	(10)	(8)	19	(29)	33	(1)	16	285
MOHAVE	(76)	33	373	26	1,461	17	(66)	1,214	81	23	1,150	(247)	918	(1)	163	5,069
YUMA	7	50	120	20	1,087	(58)	3	230	(3)	12	938	(57)	699	6	43	3,097
DISTRICT V	(69)	100	388	103	3,622	167	(21)	1,529	(14)	56	2,294	(561)	1,416	0	137	9,147
GILA	(6)	(11)	85	9	439	27	39	256	(10)	16	326	(239)	283	(1)	48	1,261
PINAL	(63)	111	303	94	3,183	140	(60)	1,273	(4)	40	1,968	(322)	1,133	1	89	7,886
DISTRICT VI	(24)	129	238	21	1,788	92	74	575	28	35	1,044	(356)	883	(1)	100	4,626
COCHISE	3	104	84	10	638	28	8	210	(14)	8	302	(136)	345	(1)	32	1,621
GRAHAM	(16)	34	56	13	583	(2)	29	206	33	22	220	(121)	197	0	20	1,274
GREENLEE	(1)	28	25	(5)	136	(1)	2	40	5	1	88	(23)	45	0	(5)	335
SANTA CRUZ	(10)	(37)	73	3	431	67	35	119	4	4	434	(76)	296	0	53	1,396

CHART 7

MEDICAL ASSISTANCE PROGRAM

COMPARISON OF RECIPIENTS

FOR 1999, 2000, 2001, 2002, 2003, 2004, 2005, 2006, 2007, 2008, & 2009

Total Recipients

