



---

DEPARTMENT OF ECONOMIC SECURITY

---

*Your Partner For A Stronger Arizona*

State of Arizona

Department of Economic Security

Family Assistance Administration

Statistical Bulletin

November, 2009

Phone: (602) 542-3678

<http://www.azdes.gov/faa/Statistics.asp>

\*\*\*\* STATISTICAL BULLETIN \*\*\*\*  
ARIZONA DEPARTMENT OF ECONOMIC SECURITY  
FAMILY ASSISTANCE ADMINISTRATION  
BOX 6123, PHOENIX, ARIZONA 85005  
PHONE (602) 542-3678

NOVEMBER 2009

THIS ISSUE OF THE STATISTICAL BULLETIN COMPARES NOVEMBER 2009 DATA FOR EACH OF THE INDICATED PROGRAMS WITH THE INFORMATION FOR OCTOBER 2009 AND NOVEMBER 2008. STATEWIDE SUMMARIES OF ACTIVITY WITHIN EACH OF THE SPECIFIC PROGRAMS FOR THIS REPORT PERIOD ARE DISCUSSED BELOW. THE TABLES COMPARE CURRENT AND PRIOR MONTH DATA. DISTRICT AND COUNTY COMPARISONS ARE PROVIDED WITHIN THIS BULLETIN

TANF SUMMARY

COMPARING TO OCTOBER 2009, NOVEMBER 2009 CASES DECREASED BY 237 (0.59%) TO 39,998. RECIPIENTS DECREASED BY 571 (0.65%) TO 87,587. PAYMENTS DECREASED BY \$48,192 (0.56%) TO \$8,574,738. AVERAGE PAYMENT PER CASE INCREASED BY \$0.07 (0.03%) TO \$214.38. PAYMENT PER RECIPIENT INCREASED BY \$0.09 (0.09%) TO \$97.90.

COMPARING TO NOVEMBER 2008, NOVEMBER 2009 CASES INCREASED BY 1,549 (4.03%). RECIPIENTS INCREASED BY 3,666 (4.37%). TOTAL PAYMENTS DECREASED BY \$1,600,180 (15.73%). THE AVERAGE PAYMENT PER CASE DECREASED BY \$50.25 (18.99%). THE AVERAGE PAYMENT PER RECIPIENT DECREASED BY \$23.34 (19.25%).

CASH ASSISTANCE (CA)

COMPARING TO OCTOBER 2009, NOVEMBER 2009 CASES DECREASED BY 181 (0.48%) TO 37,610. RECIPIENTS DECREASED BY 361 (0.44%) TO 80,774. PAYMENTS DECREASED BY \$40,950 (0.50%) TO \$8,106,878. AVERAGE PAYMENT PER CASE DECREASED BY \$0.05 (0.02%) TO \$215.55. PAYMENT PER RECIPIENT DECREASED BY \$0.06 (0.06%) TO \$100.36.

COMPARING TO NOVEMBER 2008, NOVEMBER 2009 CASES INCREASED BY 1,104 (3.02%). RECIPIENTS INCREASED BY 2,976 (3.83%). TOTAL PAYMENTS DECREASED BY \$1,564,722 (16.18%). THE AVERAGE PAYMENT PER CASE DECREASED BY \$49.38 (18.64%). THE AVERAGE PAYMENT PER RECIPIENT DECREASED BY \$23.96 (19.27%).

CASH ASSISTANCE UNEMPLOYED PARENT PROGRAM (CA-UP)

COMPARING TO OCTOBER 2009, NOVEMBER 2009 CASES DECREASED BY 22 (1.52%) TO 1,429. RECIPIENTS DECREASED BY 116 (2.28%) TO 4,962. PAYMENTS DECREASED BY \$7,643 (1.88%) TO \$398,448. AVERAGE PAYMENT PER CASE DECREASED BY \$1.04 (0.37%) TO \$278.83. PAYMENT PER RECIPIENT INCREASED BY \$0.33 (0.41%) TO \$80.30.

COMPARING TO NOVEMBER 2008, NOVEMBER 2009 CASES INCREASED BY 173 (13.77%). RECIPIENTS INCREASED BY 283 (6.05%). TOTAL PAYMENTS DECREASED BY \$56,620 (12.44%). THE AVERAGE PAYMENT PER CASE DECREASED BY \$83.49 (23.04%). THE AVERAGE PAYMENT PER RECIPIENT DECREASED BY \$16.96 (17.44%).

CASH ASSISTANCE WITH GRANT UNDER \$100 (CA-MOE)

COMPARING TO OCTOBER 2009, NOVEMBER 2009 CASES DECREASED BY 30 (3.21%) TO 906. RECIPIENTS DECREASED BY 83 (4.63%) TO 1,708. PAYMENTS INCREASED BY \$316 (0.48%) TO \$66,069. AVERAGE PAYMENT PER CASE INCREASED BY \$2.67 (3.80%) TO \$72.92. AVERAGE PAYMENT PER RECIPIENT INCREASED BY \$1.97 (5.37%) TO \$38.68.

COMPARING TO NOVEMBER 2008, NOVEMBER 2009 CASES INCREASED BY 240 (36.04%). RECIPIENTS INCREASED BY 331 (24.04%). TOTAL PAYMENTS INCREASED BY \$19,187 (40.93%). THE AVERAGE PAYMENT PER CASE INCREASED BY \$2.53 (3.59%). THE AVERAGE PAYMENT PER RECIPIENT INCREASED BY \$4.63 (13.60%).

CASH ASSISTANCE UNEMPLOYED PARENT PROGRAM WITH GRANT UNDER \$100 (CA-UP-MOE) NEW PROGRAM STARTING 7/01

COMPARING TO OCTOBER 2009, NOVEMBER 2009 CASES DECREASED BY 4 (7.02%) TO 53. RECIPIENTS DECREASED BY 11 (7.14%) TO 143. PAYMENTS INCREASED BY \$85 (2.61%) TO \$3,343. AVERAGE PAYMENT PER CASE INCREASED BY \$5.92 (10.36%) TO \$63.08. PAYMENT PER RECIPIENT INCREASED BY \$2.22 (10.49%) TO \$23.38.

COMPARING TO NOVEMBER 2008, NOVEMBER 2009 CASES INCREASED BY 32 (152.38%). RECIPIENTS INCREASED BY 76 (2.33%). TOTAL PAYMENTS INCREASED BY \$1,975 (144.37%). THE AVERAGE PAYMENT PER CASE DECREASED BY \$2.06 (3.16%). THE AVERAGE PAYMENT PER RECIPIENT INCREASED BY \$2.96 (14.50%).

TUBERCULOSIS CONTROL PROGRAM (TC)

COMPARING TO OCTOBER 2009, NOVEMBER 2009 CASES INCREASED BY 0 (0.00%) TO 2. RECIPIENTS INCREASED BY 0 (0.00%) TO 2. PAYMENTS INCREASED BY \$0 (0.00%) TO \$281. AVERAGE PAYMENT PER CASE INCREASED BY \$73.88 (52.58%) TO \$214.38. AVERAGE PAYMENT PER RECIPIENT INCREASED BY \$0.00 (0.00%) TO \$140.50.

COMPARING TO NOVEMBER 2008, NOVEMBER 2009 CASES DECREASED BY 5 (71.43%). RECIPIENTS DECREASED BY 5 (71.43%). TOTAL PAYMENTS DECREASED BY \$472 (62.68%). THE AVERAGE PAYMENT PER CASE INCREASED BY \$106.81 (99.29%). THE AVERAGE PAYMENT PER RECIPIENT INCREASED BY \$32.93 (30.61%).

SUPPLEMENTAL NUTRITION ASSISTANCE PROGRAM (SNAP)

COMPARING TO OCTOBER 2009, NOVEMBER 2009 SUPPLEMENTAL NUTRITION ASSISTANCE HOUSEHOLDS INCREASED BY 7,065 (1.71%) TO 420,349. PERSONS RECEIVING SUPPLEMENTAL NUTRITION ASSISTANCE INCREASED BY 14,114 (1.45%) TO 986,276. TOTAL COUPON ISSUANCE INCREASED BY \$1,606,515 (1.26%) TO \$128,982,371. THE AVERAGE HOUSEHOLD ALLOTMENT DECREASED BY \$1.35 (0.44%) TO \$306.85. THE AVERAGE ALLOTMENT PER PERSON DECREASED BY \$0.24 (0.19%) TO \$130.78.

COMPARING TO NOVEMBER 2008, NOVEMBER 2009 SUPPLEMENTAL NUTRITION ASSISTANCE HOUSEHOLDS INCREASED BY 122,836 (41.29%). PERSONS RECEIVING SUPPLEMENTAL NUTRITION ASSISTANCE INCREASED BY 264,958 (36.73%). TOTAL COUPON ISSUANCE INCREASED BY \$48,141,006 (59.55%). THE AVERAGE ALLOTMENT PER HOUSEHOLD INCREASED BY \$35.13 (12.93%). THE AVERAGE ALLOTMENT PER PERSON INCREASED BY \$18.71 (16.69%).

MEDICAL ASSISTANCE PROGRAM (MA) NEW TABLE INCLUDES PROP. 204 CATEGORIES

COMPARING TO OCTOBER 2009, NOVEMBER 2009 TOTAL RECIPIENTS TOTAL RECIPIENTS INCREASED BY 5,879 (0.50%). SOBRA WOMEN AT 140% FPL DECREASED BY 423 (3.92%). SOBRA CHILDREN DECREASED BY 644 (0.95%). ADULTS W/O CHILD AT 100% INCREASED BY 1,147 (2.06%). FOSTER CARE INCREASED BY 112 (0.97%). 1931 AT 36% FPL DECREASED BY 293 (0.09%). EMERGENCY SERVICES DECREASED BY 1,670 (1.86%). INFANTS DECREASED BY 164 (0.32%). ADULT W/O CHILD AT 140% INCREASED BY 2,960 (1.98%). MEDICAL W/SPEND DOWN DECREASED BY 252 (3.78%). SOBRA WOMAN AT 100% DECREASED BY 126 (3.21%). SOBRA CHILD AT 100% INCREASED BY 1,713 (0.78%). TRANSITIONAL MEDICAL INCREASED BY 2,427 (6.66%). 1931 AT 100% INCREASED BY 829 (0.73%). YATI INCREASED BY 3 (0.94%). ALL OTHER CATEGORIES INCREASED BY 260 (1.02%).

COMPARING TO NOVEMBER 2008, NOVEMBER 2009 TOTAL RECIPIENTS TOTAL RECIPIENTS INCREASED BY 189,268 (18.94%). SOBRA WOMEN AT 140% FPL DECREASED BY 1,300 (1.13%). SOBRA CHILDREN INCREASED BY 2,316 (3.57%). ADULTS W/O CHILD AT 100% INCREASED BY 15,075 (36.10%). FOSTER CARE INCREASED BY 705 (6.44%). 1931 AT 36% FPL INCREASED BY 47,592 (16.34%). EMERGENCY SERVICES INCREASED BY 4,425 (5.28%). INFANTS INCREASED BY 1,457 (2.97%). ADULT W/O CHILD AT 140% INCREASED BY 47,025 (44.57%). MEDICAL W/SPEND DOWN INCREASED BY 580 (9.95%). SOBRA WOMAN AT 100% INCREASED BY 197 (5.47%). SOBRA CHILD AT 100% INCREASED BY 45,977 (26.03%). TRANSITIONAL MEDICAL DECREASED BY 4,723 (10.83%). 1931 AT 100% INCREASED BY 29,283 (34.23%). YATI INCREASED BY 56 (21.05%). ALL OTHER CATEGORIES INCREASED BY 603 (2.39%).

# TANF SUMMARY

## TABLES 1, 1A, 1B, & 1C: ARIZONA 1

|              | NOVEMBER 2009       |                     |        |          |                   |                  |                    | OCTOBER 2009        |                     |                   | NOVEMBER 2008       |                     |                   |
|--------------|---------------------|---------------------|--------|----------|-------------------|------------------|--------------------|---------------------|---------------------|-------------------|---------------------|---------------------|-------------------|
|              | FAMILIES<br>(CASES) | PERSONS<br>(RECIP.) | ADULTS | CHILDREN | TOTAL<br>PAYMENTS | AVERAGE          | AVERAGE            | FAMILIES<br>(CASES) | PERSONS<br>(RECIP.) | TOTAL<br>PAYMENTS | FAMILIES<br>(CASES) | PERSONS<br>(RECIP.) | TOTAL<br>PAYMENTS |
|              |                     |                     |        |          |                   | PAYMENT/<br>CASE | PAYMENT/<br>RECIP. |                     |                     |                   |                     |                     |                   |
| ARIZONA      | 39,998              | 87,587              | 21,801 | 65,786   | 8,574,738         | 214.38           | 97.90              | (237)               | (571)               | (48,192)          | 1,549               | 3,666               | (1,600,180)       |
| DISTRICT I   |                     |                     |        |          |                   |                  |                    |                     |                     |                   |                     |                     |                   |
| MARICOPA     | 24,479              | 54,359              | 12,900 | 41,459   | 5,212,260         | 212.93           | 95.89              | (8)                 | 7                   | 1,012             | 2,354               | 5,338               | (697,260)         |
| DISTRICT II  |                     |                     |        |          |                   |                  |                    |                     |                     |                   |                     |                     |                   |
| PIMA         | 6,698               | 13,865              | 3,659  | 10,206   | 1,407,727         | 210.17           | 101.53             | (39)                | (98)                | (10,429)          | (204)               | (506)               | (390,291)         |
| DISTRICT III |                     |                     |        |          |                   |                  |                    |                     |                     |                   |                     |                     |                   |
| APACHE       | 2                   | 5                   | 2      | 3        | 439               | 219.50           | 87.80              | (4)                 | (11)                | (1,092)           | (74)                | (161)               | (19,472)          |
| COCONINO     | 228                 | 501                 | 120    | 381      | 46,876            | 205.60           | 93.56              | (17)                | (35)                | (2,753)           | (15)                | (4)                 | (11,483)          |
| NAVAJO       | 1,510               | 3,989               | 1,233  | 2,756    | 415,571           | 275.21           | 104.18             | 15                  | 59                  | 7,689             | 179                 | 726                 | 45,300            |
| YAVAPAI      | 673                 | 1,321               | 280    | 1,041    | 131,519           | 195.42           | 99.56              | (27)                | (64)                | (6,056)           | (34)                | (76)                | (46,476)          |
| DISTRICT IV  |                     |                     |        |          |                   |                  |                    |                     |                     |                   |                     |                     |                   |
| LA PAZ       | 175                 | 380                 | 116    | 264      | 34,494            | 197.11           | 90.77              | (18)                | (40)                | (3,841)           | (40)                | (83)                | (20,251)          |
| MOHAVE       | 1,216               | 2,486               | 711    | 1,775    | 246,483           | 202.70           | 99.15              | (30)                | (97)                | (9,561)           | (161)               | (468)               | (110,727)         |
| YUMA         | 999                 | 2,184               | 460    | 1,724    | 212,550           | 212.76           | 97.32              | (27)                | (79)                | (7,094)           | (144)               | (369)               | (89,471)          |
| DISTRICT V   |                     |                     |        |          |                   |                  |                    |                     |                     |                   |                     |                     |                   |
| GILA         | 734                 | 1,558               | 561    | 997      | 178,024           | 242.54           | 114.26             | (14)                | (31)                | (2,103)           | (6)                 | 15                  | (12,601)          |
| PINAL        | 1,924               | 4,245               | 1,108  | 3,137    | 401,938           | 208.91           | 94.69              | (50)                | (140)               | (10,209)          | (17)                | (59)                | (107,988)         |
| DISTRICT VI  |                     |                     |        |          |                   |                  |                    |                     |                     |                   |                     |                     |                   |
| COCHISE      | 804                 | 1,584               | 375    | 1,209    | 165,952           | 206.41           | 104.77             | 11                  | 23                  | 2,428             | (192)               | (413)               | (90,592)          |
| GRAHAM       | 276                 | 533                 | 159    | 374      | 61,782            | 223.85           | 115.91             | (26)                | (57)                | (5,336)           | (39)                | (95)                | (16,620)          |
| GREENLEE     | 23                  | 46                  | 10     | 36       | 4,626             | 201.13           | 100.57             | 0                   | 0                   | 83                | (5)                 | (6)                 | (2,228)           |
| SANTA CRUZ   | 257                 | 531                 | 107    | 424      | 54,497            | 212.05           | 102.63             | (3)                 | (8)                 | (930)             | (53)                | (173)               | (30,020)          |

1/EXCLUDES: PRIOR MONTH NET TOTALS OF 1,757 CASES; 4,306 RECIPIENTS; \$323,600.  
 GRANT DIVERSION TOTALS OF: 685 CASES; \$527,104.  
 ZERO PAY TOTALS OF 1,720 CASES; 5,306 RECIPIENTS.  
 TANF CHILD ONLY: 19,507 CASES, 32,685 RECIPIENTS; \$3,756,097.  
 RRP: 744 CASES; 1,290 RECIPIENTS; \$133,199.

|              | CURRENT<br>MO. CASES | CURRENT MO.<br>RECIP. | CURRENT MO.<br>DOLLARS | PRIOR MO.<br>CASES | PRIOR MO.<br>RECIP. | PRIOR MO.<br>DOLLARS |
|--------------|----------------------|-----------------------|------------------------|--------------------|---------------------|----------------------|
| PASQUAYAOUI  | 382                  | 1,125                 | \$116,840              | 22                 | 66                  | 7,040                |
| WM APACHE    | 825                  | 2,441                 | \$262,138              | 11                 | 34                  | 979                  |
| SALT RIVER   | 89                   | 298                   | \$28,203               | 6                  | 16                  | 598                  |
| SAN CARLOS   | 590                  | 1,310                 | \$154,816              | 14                 | 42                  | 2,587                |
| HOPI         | 118                  | 332                   | \$26,644               | 4                  | 13                  | 261                  |
| <b>TOTAL</b> | <b>2,004</b>         | <b>5,506</b>          | <b>\$588,641</b>       | <b>57</b>          | <b>171</b>          | <b>\$11,465</b>      |

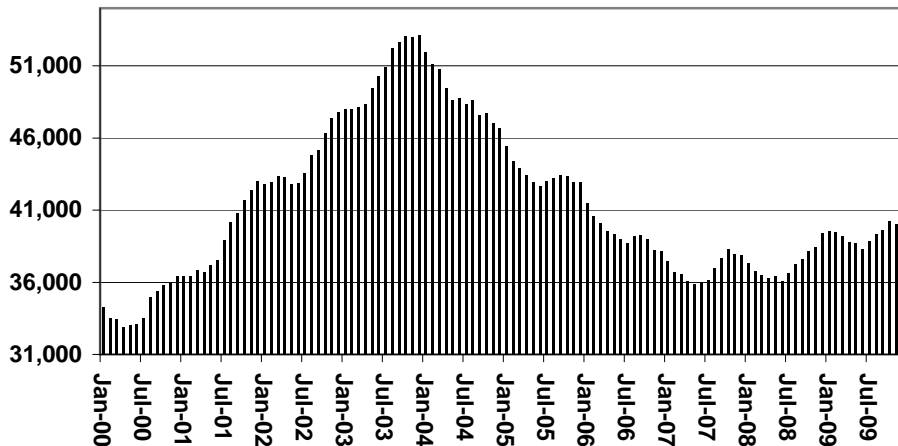
# TANF SUMMARY

TABLES 1, 1A, 1B, & 1C

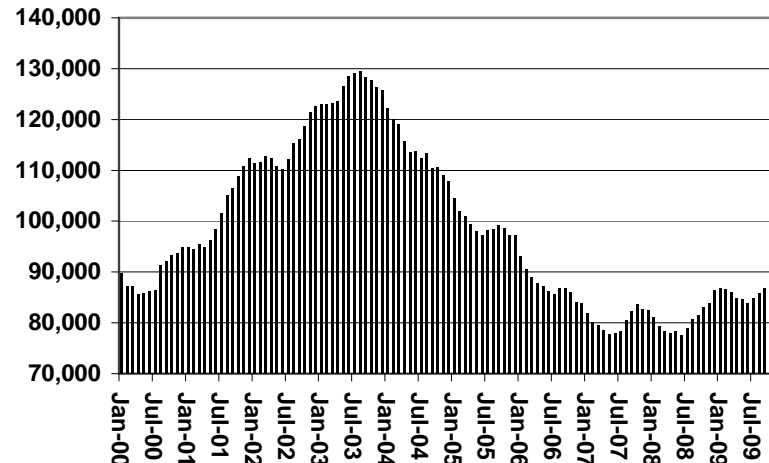
COMPARISON OF CASES, RECIPIENTS, PAYMENTS & AVERAGE PAYMENTS

FOR 2000, 2001, 2002, 2003, 2004, 2005, 2006, 2007, 2008, & 2009

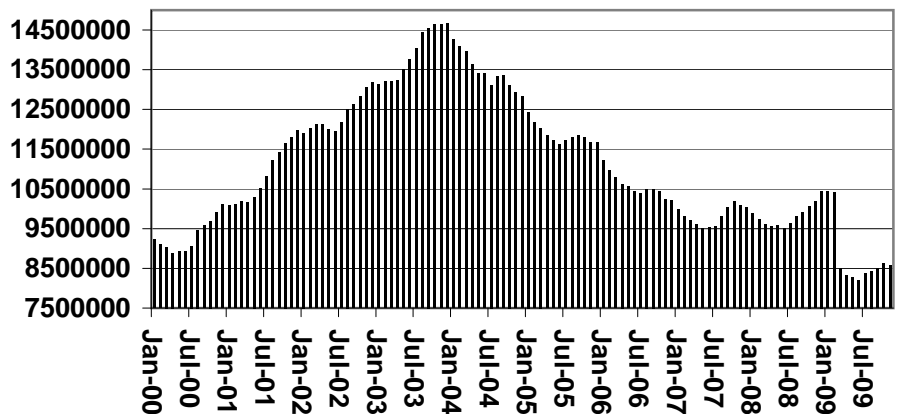
### Cases



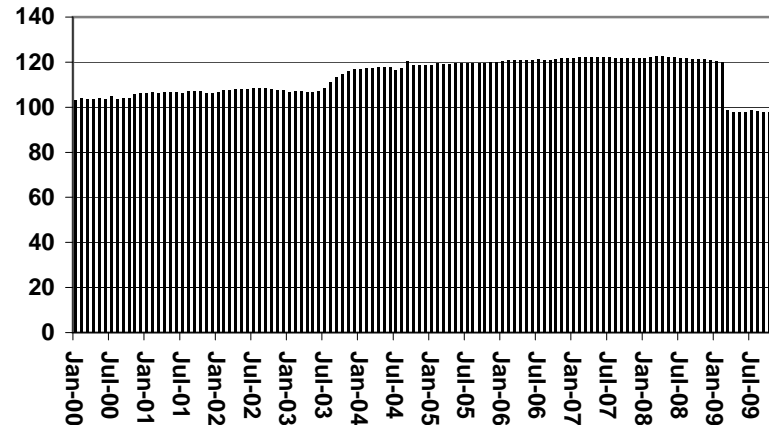
### Recipients



### Payments



### Average Payments Per Recipient

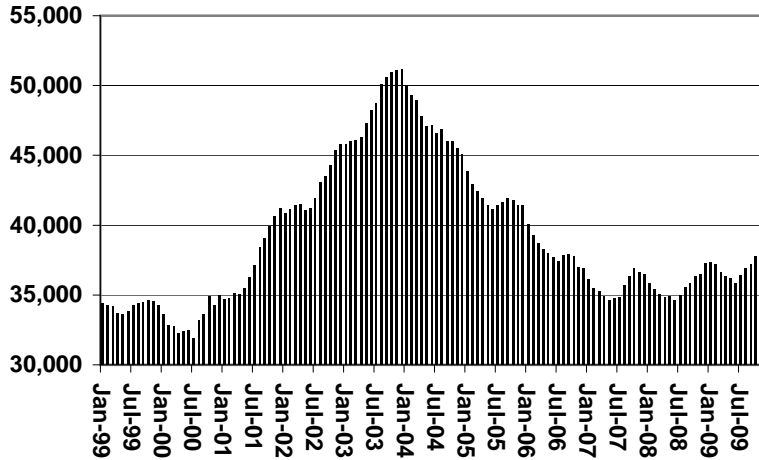




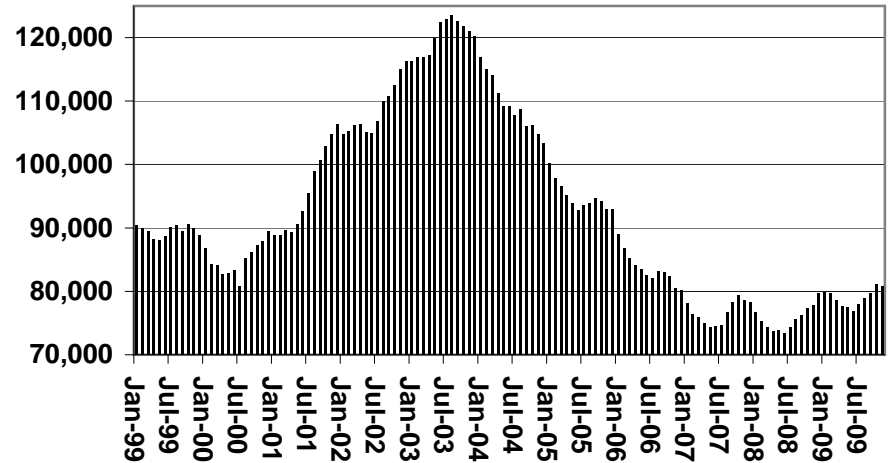
# CHART 1

## CASH ASSISTANCE PROGRAM COMPARISON OF CASES, RECIPIENTS, PAYMENTS & AVERAGE PAYMENTS FOR 1999, 2000, 2001, 2002, 2003, 2004, 2005, 2006, 2007, 2008, & 2009

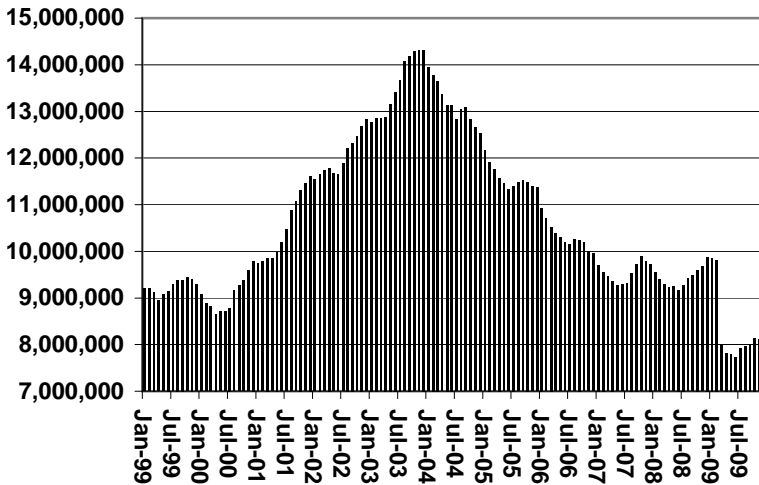
### Cases



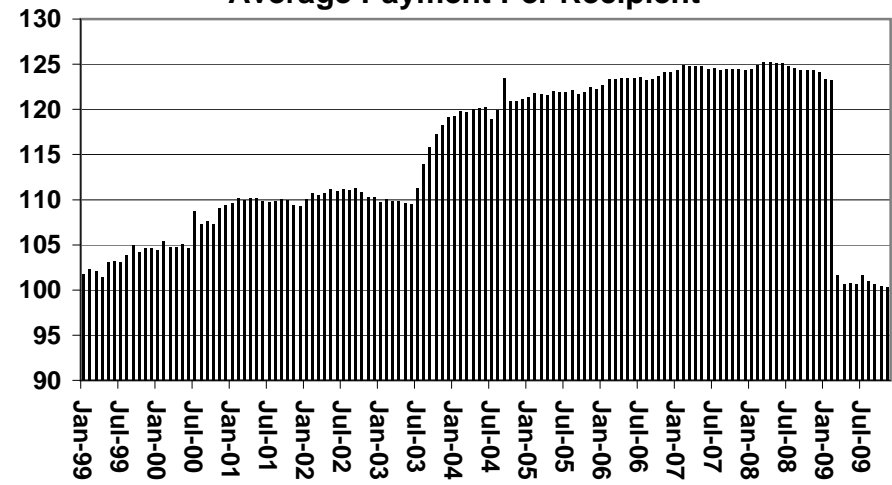
### Recipients



### Payments



### Average Payment Per Recipient



**TABLE 1A  
CA-UP**

**CASH ASSISTANCE UNEMPLOYED PARENT PROGRAM: ARIZONA 1**

|              | NOVEMBER 2009    |                  |        |          |                |                       |                         | CHANGE FROM      |                  |                | NOVEMBER 2008    |                  |                |
|--------------|------------------|------------------|--------|----------|----------------|-----------------------|-------------------------|------------------|------------------|----------------|------------------|------------------|----------------|
|              | FAMILIES (CASES) | PERSONS (RECIP.) | ADULTS | CHILDREN | TOTAL PAYMENTS | AVERAGE PAYMENT/ CASE | AVERAGE PAYMENT/ RECIP. | FAMILIES (CASES) | PERSONS (RECIP.) | TOTAL PAYMENTS | FAMILIES (CASES) | PERSONS (RECIP.) | TOTAL PAYMENTS |
| ARIZONA      | 1,429            | 4,962            | 1,812  | 3,150    | 398,448        | 278.83                | 80.30                   | (22)             | (116)            | (7,643)        | 173              | 283              | (56,620)       |
| DISTRICT I   |                  |                  |        |          |                |                       |                         |                  |                  |                |                  |                  |                |
| MARICOPA     | 999              | 3,372            | 1,096  | 2,276    | 273,463        | 273.74                | 81.10                   | 9                | 34               | 2,011          | 267              | 728              | 9,936          |
| DISTRICT II  |                  |                  |        |          |                |                       |                         |                  |                  |                |                  |                  |                |
| PIMA         | 234              | 879              | 391    | 488      | 70,455         | 301.09                | 80.15                   | (1)              | (30)             | (802)          | 26               | 89               | (4,815)        |
| DISTRICT III |                  |                  |        |          |                |                       |                         |                  |                  |                |                  |                  |                |
| APACHE       | 0                | 0                | 0      | 0        | 0              | 0.00                  | 0.00                    | 0                | 0                | 0              | (6)              | (28)             | (2,434)        |
| COCONINO     | 2                | 9                | 4      | 5        | 727            | 363.50                | 80.78                   | (2)              | (10)             | (784)          | (4)              | (13)             | (1,582)        |
| NAVAJO       | 24               | 79               | 44     | 35       | 7,300          | 304.17                | 92.41                   | (3)              | (16)             | (1,396)        | (52)             | (254)            | (23,120)       |
| YAVAPAI      | 11               | 29               | 7      | 22       | 2,330          | 211.82                | 80.34                   | (2)              | (11)             | (921)          | (4)              | (24)             | (2,589)        |
| DISTRICT IV  |                  |                  |        |          |                |                       |                         |                  |                  |                |                  |                  |                |
| LA PAZ       | 6                | 21               | 11     | 10       | 1,267          | 211.17                | 60.33                   | (1)              | (3)              | (668)          | (1)              | (13)             | (2,071)        |
| MOHAVE       | 28               | 105              | 53     | 52       | 7,756          | 277.00                | 73.87                   | (4)              | (16)             | (1,184)        | (39)             | (149)            | (16,409)       |
| YUMA         | 25               | 98               | 35     | 63       | 7,720          | 308.80                | 78.78                   | (7)              | (19)             | (1,123)        | (9)              | (32)             | (5,323)        |
| DISTRICT V   |                  |                  |        |          |                |                       |                         |                  |                  |                |                  |                  |                |
| GILA         | 5                | 17               | 10     | 7        | 1,358          | 271.60                | 79.88                   | 3                | 11               | 803            | 1                | (3)              | (274)          |
| PINAL        | 78               | 294              | 133    | 161      | 21,168         | 271.38                | 72.00                   | (17)             | (72)             | (5,128)        | 6                | 24               | (3,112)        |
| DISTRICT VI  |                  |                  |        |          |                |                       |                         |                  |                  |                |                  |                  |                |
| COCHISE      | 12               | 45               | 22     | 23       | 3,571          | 297.58                | 79.36                   | 5                | 20               | 1,669          | (5)              | (11)             | (2,111)        |
| GRAHAM       | 3                | 10               | 4      | 6        | 891            | 297.00                | 89.10                   | 1                | 4                | 472            | (2)              | (7)              | (444)          |
| GREENLEE     | 0                | 0                | 0      | 0        | 0              | 0.00                  | 0.00                    | 0                | 0                | 0              | 0                | 0                | 0              |
| SANTA CRUZ   | 2                | 4                | 2      | 2        | 442            | 221.00                | 110.50                  | (3)              | (8)              | (592)          | (5)              | (24)             | (2,272)        |

1/EXCLUDES: PRIOR MONTH NET TOTALS OF: 129 CASES; 512 RECIPIENTS; \$57,461.  
GRANT DIVERSION TOTALS OF: 0 CASES; \$0.  
ZERO PAY TOTALS OF 87 CASES; 395 RECIPIENTS.

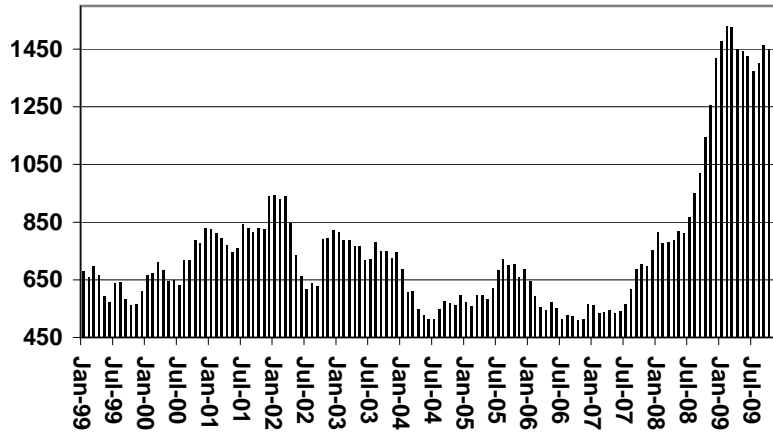
|              | CURRENT MO. CASES | CURRENT MO. RECIP. | CURRENT MO. DOLLARS | PRIOR MO. CASES | PRIOR MO. RECIP. | PRIOR MO. DOLLARS |
|--------------|-------------------|--------------------|---------------------|-----------------|------------------|-------------------|
| PASQUAYUAQUI | 25                | 114                | 9,651               | 5               | 23               | 2,365             |
| WM APACHE    | 4                 | 14                 | 1,401               | 0               | 0                | 0                 |
| SALT RIVER   | 0                 | 0                  | 0                   | 0               | 0                | 0                 |
| SAN CARLOS   | 0                 | 0                  | 0                   | 0               | 0                | 0                 |
| HOPi         | 0                 | 0                  | 0                   | 0               | 0                | 0                 |
| <b>TOTAL</b> | <b>29</b>         | <b>128</b>         | <b>11,052</b>       | <b>5</b>        | <b>23</b>        | <b>2,365</b>      |

CASES WITH GRANT UNDER \$100 (SEE TABLE 1C).

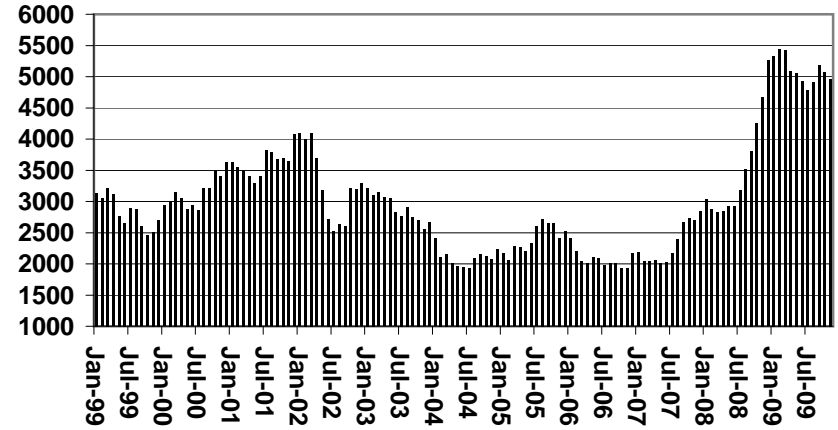
# CHART 1A

## CASH ASSISTANCE UNEMPLOYED PARENT PROGRAM COMPARISON OF CASES, RECIPIENTS, PAYMENTS & AVERAGE PAYMENTS FOR 1999, 2000, 2001, 2002, 2003, 2004, 2005, 2006, 2007, 2008, & 2009

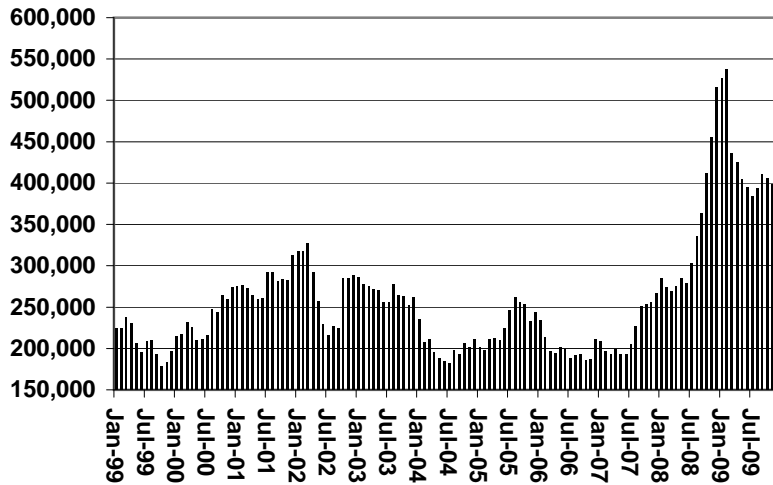
### Cases



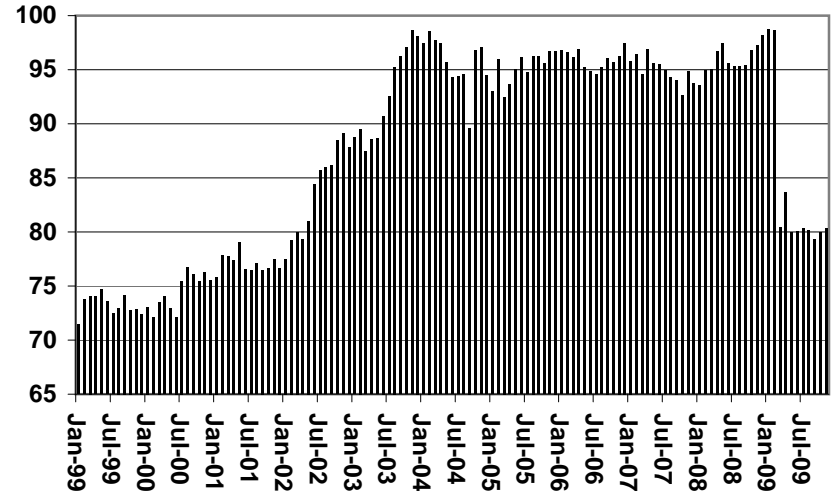
### Recipients



### Payments



### Average Payment Per Recipient





**TABLE 1B**

**CASH ASSISTANCE: ARIZONA  
CASES WITH GRANT UNDER \$100**

CHANGE FROM

|              | NOVEMBER 2009       |                     |        |          |                   |                             |                               | OCTOBER 2009        |                     |                   | NOVEMBER 2008       |                     |                   |
|--------------|---------------------|---------------------|--------|----------|-------------------|-----------------------------|-------------------------------|---------------------|---------------------|-------------------|---------------------|---------------------|-------------------|
|              | FAMILIES<br>(CASES) | PERSONS<br>(RECIP.) | ADULTS | CHILDREN | TOTAL<br>PAYMENTS | AVERAGE<br>PAYMENT/<br>CASE | AVERAGE<br>PAYMENT/<br>RECIP. | FAMILIES<br>(CASES) | PERSONS<br>(RECIP.) | TOTAL<br>PAYMENTS | FAMILIES<br>(CASES) | PERSONS<br>(RECIP.) | TOTAL<br>PAYMENTS |
| ARIZONA      | 906                 | 1,708               | 447    | 1,261    | 66,069            | 72.92                       | 38.68                         | (30)                | (83)                | 316               | 240                 | 331                 | 19,187            |
| DISTRICT I   |                     |                     |        |          |                   |                             |                               |                     |                     |                   |                     |                     |                   |
| MARICOPA     | 556                 | 1,069               | 249    | 820      | 39,133            | 70.38                       | 36.61                         | (47)                | (121)               | (1,484)           | 171                 | 276                 | 13,980            |
| DISTRICT II  |                     |                     |        |          |                   |                             |                               |                     |                     |                   |                     |                     |                   |
| PIMA         | 156                 | 275                 | 84     | 191      | 12,280            | 78.72                       | 44.65                         | 14                  | 31                  | 998               | 45                  | 52                  | 3,909             |
| DISTRICT III |                     |                     |        |          |                   |                             |                               |                     |                     |                   |                     |                     |                   |
| APACHE       | 0                   | 0                   | 0      | 0        | 0                 | 0.00                        | 0.00                          | (1)                 | (2)                 | (30)              | (2)                 | (4)                 | (225)             |
| COCONINO     | 5                   | 11                  | 5      | 6        | 505               | 101.00                      | 45.91                         | 4                   | 9                   | 283               | (2)                 | (8)                 | (25)              |
| NAVAJO       | 13                  | 24                  | 7      | 17       | 826               | 63.54                       | 34.42                         | (3)                 | (7)                 | (171)             | 2                   | 1                   | 84                |
| YAVAPAI      | 27                  | 50                  | 16     | 34       | 1,888             | 69.93                       | 37.76                         | 1                   | 2                   | 149               | 14                  | 29                  | 1,205             |
| DISTRICT IV  |                     |                     |        |          |                   |                             |                               |                     |                     |                   |                     |                     |                   |
| LA PAZ       | 6                   | 13                  | 5      | 8        | 525               | 87.50                       | 40.38                         | (1)                 | (2)                 | 62                | (2)                 | (3)                 | (219)             |
| MOHAVE       | 43                  | 81                  | 29     | 52       | 3,038             | 70.65                       | 37.51                         | 10                  | 15                  | 535               | 9                   | 12                  | 249               |
| YUMA         | 23                  | 49                  | 19     | 30       | 1,988             | 86.43                       | 40.57                         | 6                   | 15                  | 517               | (8)                 | (25)                | (487)             |
| DISTRICT V   |                     |                     |        |          |                   |                             |                               |                     |                     |                   |                     |                     |                   |
| GILA         | 9                   | 14                  | 2      | 12       | 651               | 72.33                       | 46.50                         | 1                   | 5                   | 272               | 4                   | 4                   | 293               |
| PINAL        | 39                  | 73                  | 19     | 54       | 2,820             | 72.31                       | 38.63                         | (8)                 | (14)                | (622)             | 3                   | (14)                | (78)              |
| DISTRICT VI  |                     |                     |        |          |                   |                             |                               |                     |                     |                   |                     |                     |                   |
| COCHISE      | 22                  | 35                  | 8      | 27       | 1,774             | 80.64                       | 50.69                         | (3)                 | (12)                | (241)             | 6                   | 8                   | 362               |
| GRAHAM       | 5                   | 9                   | 3      | 6        | 571               | 114.20                      | 63.44                         | (3)                 | (3)                 | 73                | 2                   | 5                   | 422               |
| GREENLEE     | 0                   | 0                   | 0      | 0        | 0                 | 0.00                        | 0.00                          | 0                   | 0                   | 0                 | (1)                 | (2)                 | (86)              |
| SANTA CRUZ   | 2                   | 5                   | 1      | 4        | 70                | 35.00                       | 14.00                         | 0                   | 1                   | (25)              | (1)                 | 0                   | (197)             |

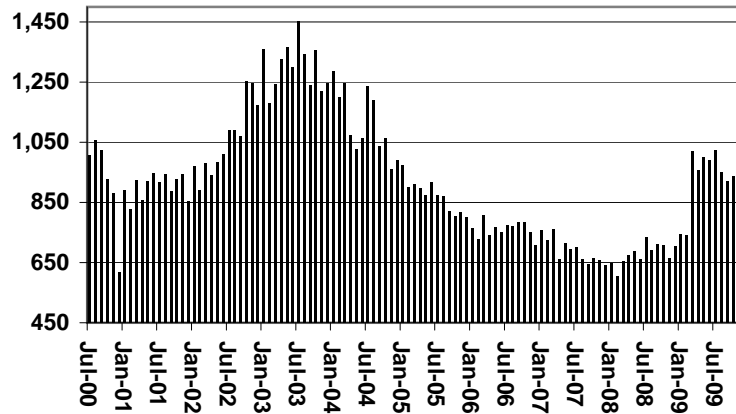
EXCLUDES: PRIOR MONTH NET TOTALS OF 772 CASES; 1,603 RECIPIENTS; \$47,178.

# CHART 1B

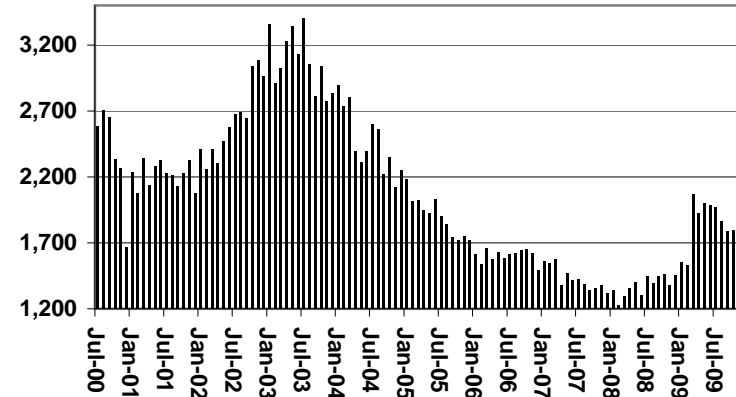
## CASH ASSISTANCE PROGRAM CASES WITH GRANT UNDER \$100

FOR 1999, 2000, 2001, 2002, 2003, 2004, 2005, 2006, 2007, 2008, & 2009

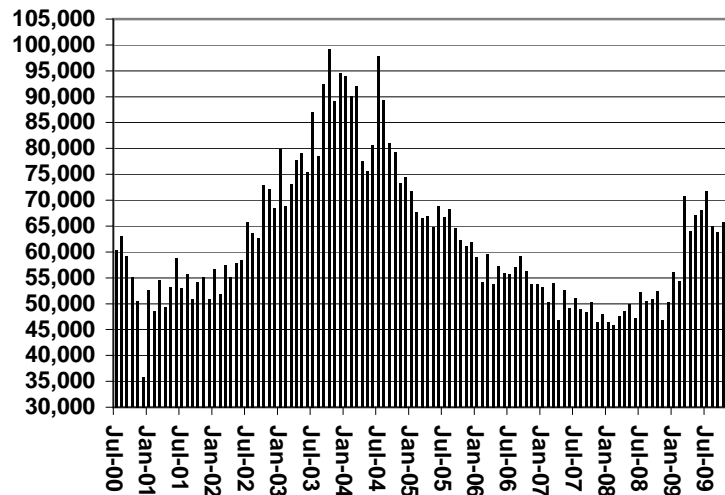
Cases



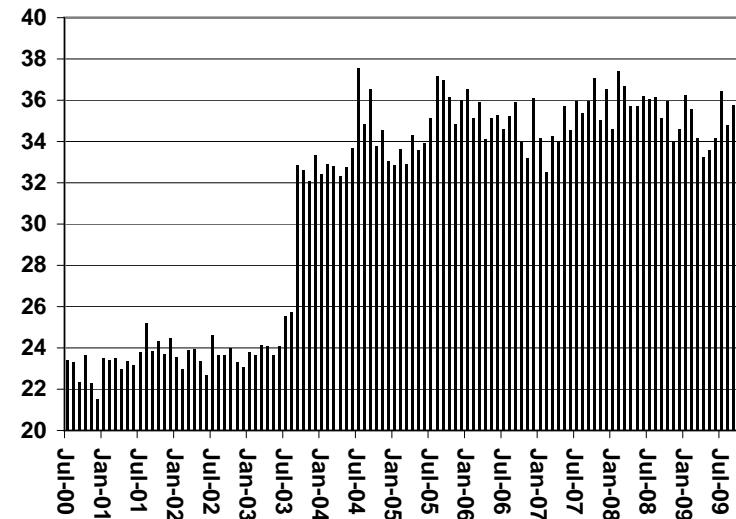
Recipients



Payments



Average Payment Per Recipient



**TABLE 1C**

**CASH ASSISTANCE UNEMPLOYED PARENT PROGRAM: ARIZONA  
CASES WITH GRANT UNDER \$100**

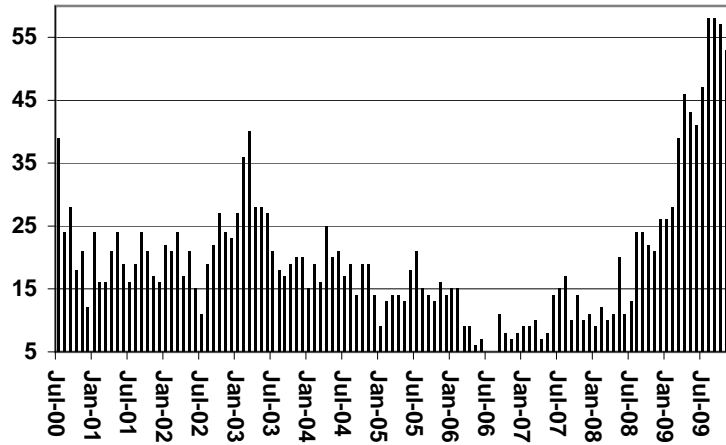
|              | CHANGE FROM         |                     |        |          |                   |                             |                               |                     |                     |                   |                     |                     |                   |
|--------------|---------------------|---------------------|--------|----------|-------------------|-----------------------------|-------------------------------|---------------------|---------------------|-------------------|---------------------|---------------------|-------------------|
|              | NOVEMBER 2009       |                     |        |          |                   |                             |                               | OCTOBER 2009        |                     |                   | NOVEMBER 2008       |                     |                   |
|              | FAMILIES<br>(CASES) | PERSONS<br>(RECIP.) | ADULTS | CHILDREN | TOTAL<br>PAYMENTS | AVERAGE<br>PAYMENT/<br>CASE | AVERAGE<br>PAYMENT/<br>RECIP. | FAMILIES<br>(CASES) | PERSONS<br>(RECIP.) | TOTAL<br>PAYMENTS | FAMILIES<br>(CASES) | PERSONS<br>(RECIP.) | TOTAL<br>PAYMENTS |
| ARIZONA      | 53                  | 143                 | 30     | 113      | 3,343             | 63.08                       | 23.38                         | (4)                 | (11)                | 85                | 32                  | 76                  | 1,975             |
| DISTRICT I   |                     |                     |        |          |                   |                             |                               |                     |                     |                   |                     |                     |                   |
| MARICOPA     | 43                  | 105                 | 17     | 88       | 2,643             | 61.47                       | 25.17                         | (6)                 | (21)                | (192)             | 29                  | 61                  | 1,742             |
| DISTRICT II  |                     |                     |        |          |                   |                             |                               |                     |                     |                   |                     |                     |                   |
| PIMA         | 4                   | 20                  | 5      | 15       | 252               | 63.00                       | 12.60                         | (1)                 | 0                   | 25                | 1                   | 9                   | 89                |
| DISTRICT III |                     |                     |        |          |                   |                             |                               |                     |                     |                   |                     |                     |                   |
| APACHE       | 0                   | 0                   | 0      | 0        | 0                 | 0.00                        | 0.00                          | 0                   | 0                   | 0                 | 0                   | 0                   | 0                 |
| COCONINO     | 0                   | 0                   | 0      | 0        | 0                 | 0.00                        | 0.00                          | 0                   | 0                   | 0                 | 0                   | 0                   | 0                 |
| NAVAJO       | 0                   | 0                   | 0      | 0        | 0                 | 0.00                        | 0.00                          | 0                   | 0                   | 0                 | 0                   | 0                   | 0                 |
| YAVAPAI      | 3                   | 7                   | 2      | 5        | 241               | 80.33                       | 34.43                         | 1                   | 4                   | 121               | 2                   | 6                   | 144               |
| DISTRICT IV  |                     |                     |        |          |                   |                             |                               |                     |                     |                   |                     |                     |                   |
| LA PAZ       | 0                   | 0                   | 0      | 0        | 0                 | 0.00                        | 0.00                          | 0                   | 0                   | 0                 | 0                   | 0                   | 0                 |
| MOHAVE       | 0                   | 0                   | 0      | 0        | 0                 | 0.00                        | 0.00                          | 0                   | 0                   | 0                 | (2)                 | (9)                 | (146)             |
| YUMA         | 0                   | 0                   | 0      | 0        | 0                 | 0.00                        | 0.00                          | 0                   | 0                   | 0                 | (1)                 | (2)                 | (61)              |
| DISTRICT V   |                     |                     |        |          |                   |                             |                               |                     |                     |                   |                     |                     |                   |
| GILA         | 2                   | 6                   | 4      | 2        | 131               | 65.50                       | 21.83                         | 2                   | 6                   | 131               | 2                   | 6                   | 131               |
| PINAL        | 0                   | 0                   | 0      | 0        | 0                 | 0.00                        | 0.00                          | 0                   | 0                   | 0                 | 0                   | 0                   | 0                 |
| DISTRICT VI  |                     |                     |        |          |                   |                             |                               |                     |                     |                   |                     |                     |                   |
| COCHISE      | 1                   | 5                   | 2      | 3        | 76                | 76.00                       | 15.20                         | 0                   | 0                   | 0                 | 1                   | 5                   | 76                |
| GRAHAM       | 0                   | 0                   | 0      | 0        | 0                 | 0.00                        | 0.00                          | 0                   | 0                   | 0                 | 0                   | 0                   | 0                 |
| GREENLEE     | 0                   | 0                   | 0      | 0        | 0                 | 0.00                        | 0.00                          | 0                   | 0                   | 0                 | 0                   | 0                   | 0                 |
| SANTA CRUZ   | 1                   | 5                   | 2      | 3        | 76                | 76.00                       | 15.20                         | 0                   | 0                   | 0                 | 1                   | 5                   | 76                |

EXCLUDES: PRIOR MONTH NET TOTALS OF 58 CASES; 179 RECIPIENTS; \$3,152.

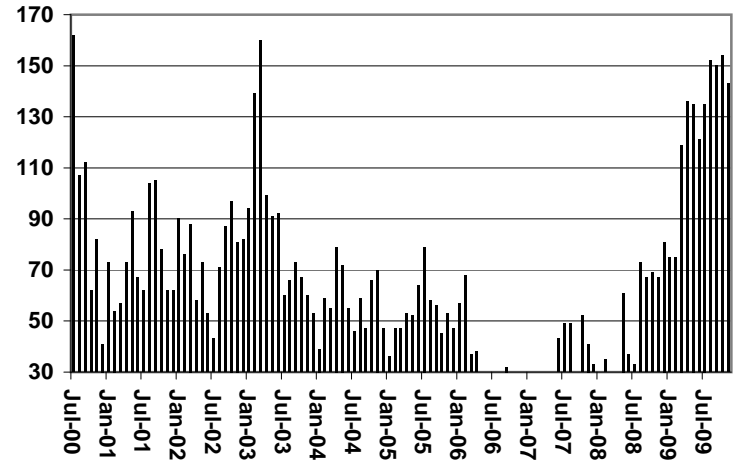
# CHART 1C

## CASH ASSISTANCE UNEMPLOYED PARENT PROGRAM CASES WITH GRANT UNDER \$100 FOR 1999, 2000, 2001, 2002, 2003, 2004, 2005, 2006, 2007, 2008, & 2009

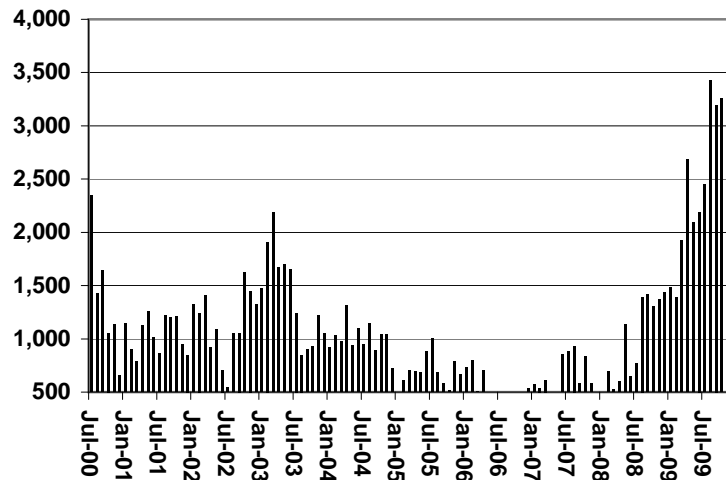
### Cases



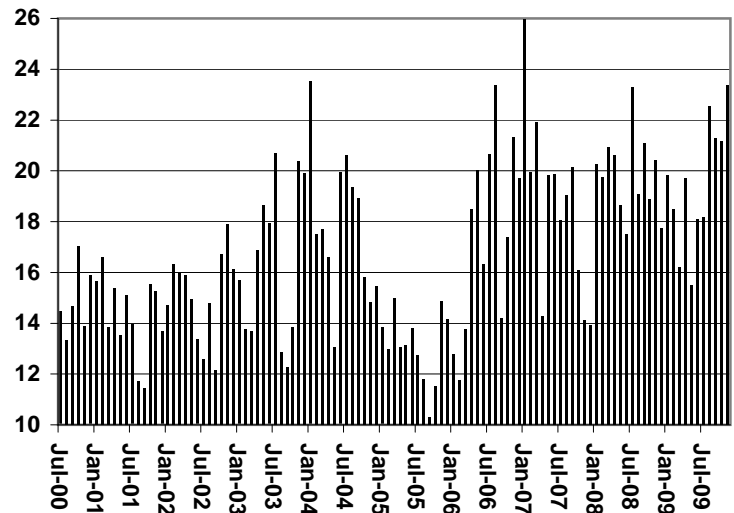
### Recipients



### Payments



### Average Payment Per Recipient



**TABLE 4**  
**TUBERCULOSIS CONTROL: ARIZONA 1/**

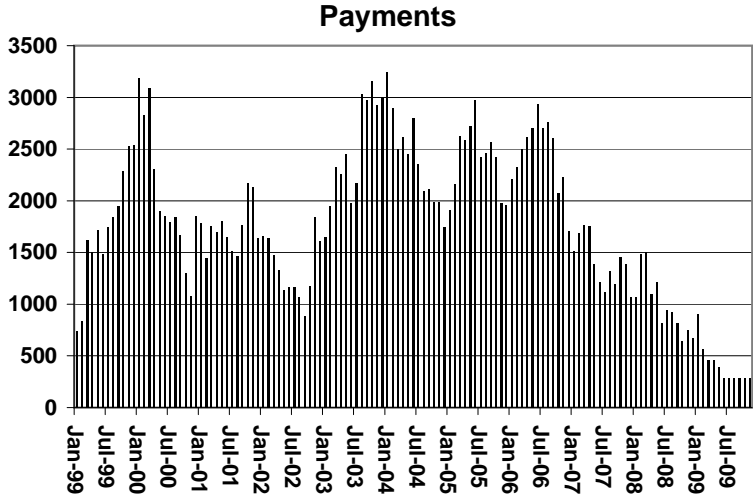
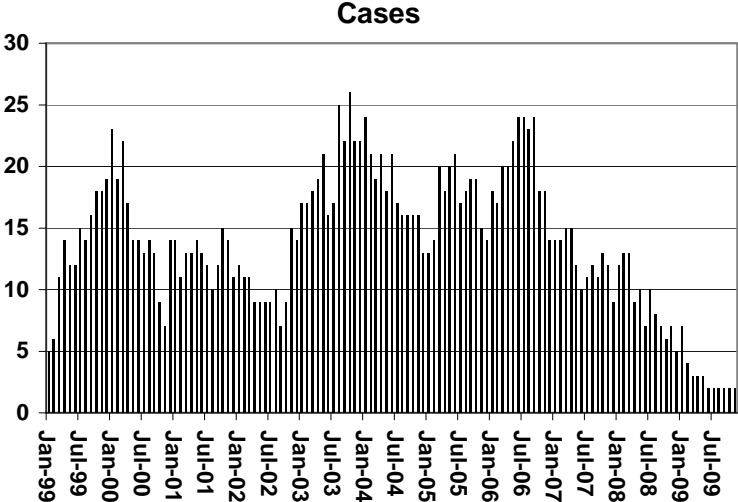
|              | CHANGE FROM           |                     |                   |                             |                               |                       |                     |                   |                       |                     |                   |  |
|--------------|-----------------------|---------------------|-------------------|-----------------------------|-------------------------------|-----------------------|---------------------|-------------------|-----------------------|---------------------|-------------------|--|
|              | NOVEMBER 2009         |                     |                   |                             |                               | OCTOBER 2009          |                     |                   | NOVEMBER 2008         |                     |                   |  |
|              | NUMBER<br>OF<br>CASES | PERSONS<br>(RECIP.) | TOTAL<br>PAYMENTS | AVERAGE<br>PAYMENT/<br>CASE | AVERAGE<br>PAYMENT/<br>RECIP. | NUMBER<br>OF<br>CASES | PERSONS<br>(RECIP.) | TOTAL<br>PAYMENTS | NUMBER<br>OF<br>CASES | PERSONS<br>(RECIP.) | TOTAL<br>PAYMENTS |  |
| ARIZONA      | 2                     | 2                   | 281               | 140.50                      | 140.50                        | 0                     | 0                   | 0                 | (5)                   | (5)                 | (472)             |  |
| DISTRICT I   |                       |                     |                   |                             |                               |                       |                     |                   |                       |                     |                   |  |
| MARICOPA     | 1                     | 1                   | 173               | 173.00                      | 173.00                        | 0                     | 0                   | 0                 | (6)                   | (6)                 | (580)             |  |
| DISTRICT II  |                       |                     |                   |                             |                               |                       |                     |                   |                       |                     |                   |  |
| PIMA         | 0                     | 0                   | 0                 | 0.00                        | 0.00                          | 0                     | 0                   | 0                 | 0                     | 0                   | 0                 |  |
| DISTRICT III |                       |                     |                   |                             |                               |                       |                     |                   |                       |                     |                   |  |
| APACHE       | 0                     | 0                   | 0                 | 0.00                        | 0.00                          | 0                     | 0                   | 0                 | 0                     | 0                   | 0                 |  |
| COCONINO     | 0                     | 0                   | 0                 | 0.00                        | 0.00                          | 0                     | 0                   | 0                 | 0                     | 0                   | 0                 |  |
| NAVAJO       | 0                     | 0                   | 0                 | 0.00                        | 0.00                          | 0                     | 0                   | 0                 | 0                     | 0                   | 0                 |  |
| YAVAPAI      |                       |                     |                   |                             |                               |                       |                     |                   |                       |                     |                   |  |
| DISTRICT IV  |                       |                     |                   |                             |                               |                       |                     |                   |                       |                     |                   |  |
| LA PAZ       | 0                     | 0                   | 0                 | 0.00                        | 0.00                          | 0                     | 0                   | 0                 | 0                     | 0                   | 0                 |  |
| MOHAVE       | 0                     | 0                   | 0                 | 0.00                        | 0.00                          | 0                     | 0                   | 0                 | 0                     | 0                   | 0                 |  |
| YUMA         |                       |                     |                   |                             |                               |                       |                     |                   |                       |                     |                   |  |
| DISTRICT V   |                       |                     |                   |                             |                               |                       |                     |                   |                       |                     |                   |  |
| GILA         | 0                     | 0                   | 0                 | 0.00                        | 0.00                          | 0                     | 0                   | 0                 | 0                     | 0                   | 0                 |  |
| PINAL        | 0                     | 0                   | 0                 | 0.00                        | 0.00                          | 0                     | 0                   | 0                 | 0                     | 0                   | 0                 |  |
| DISTRICT VI  |                       |                     |                   |                             |                               |                       |                     |                   |                       |                     |                   |  |
| COCHISE      | 1                     | 1                   | 108               | 108.00                      | 108.00                        | 0                     | 0                   | 0                 | 1                     | 1                   | 108               |  |
| GRAHAM       | 1                     | 1                   | 108               | 108.00                      | 108.00                        | 0                     | 0                   | 0                 | 1                     | 1                   | 108               |  |
| GREENLEE     | 0                     | 0                   | 0                 | 0.00                        | 0.00                          | 0                     | 0                   | 0                 | 0                     | 0                   | 0                 |  |
| SANTA CRUZ   | 0                     | 0                   | 0                 | 0.00                        | 0.00                          | 0                     | 0                   | 0                 | 0                     | 0                   | 0                 |  |

1/EXCLUDES: PRIOR MONTH NET TOTALS OF : 0 CASES; 0 RECIPIENTS; \$0.

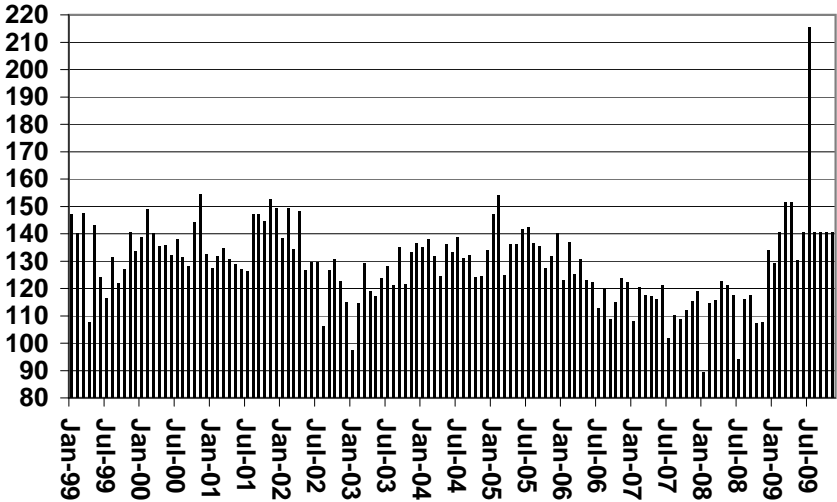
# CHART 4

## TUBERCULOSIS CONTROL PROGRAM

### COMPARISON OF CASES, PAYMENTS & AVERAGE PAYMENTS FOR 1999, 2000, 2001, 2002, 2003, 2004, 2005, 2006, 2007, 2008, & 2009



### Average Payment Per Case



**TABLE 6**  
**SUPPLEMENTAL NUTRITION ASSISTANCE PROGRAM: ARIZONA 1**

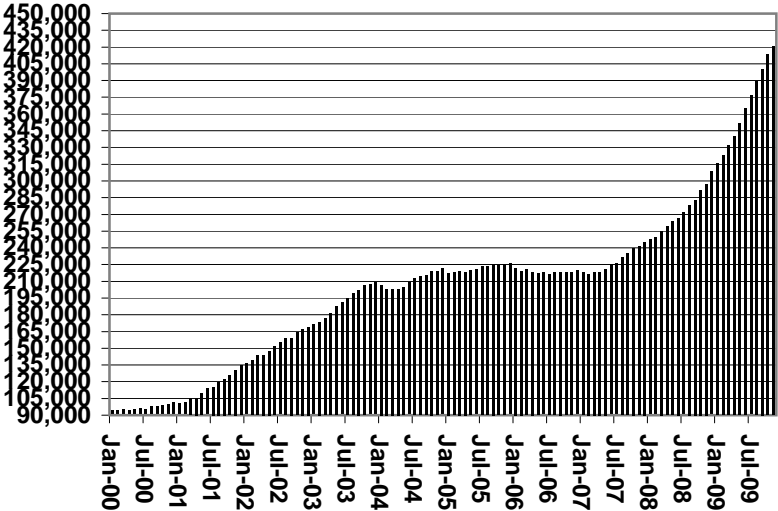
|              | CHANGE FROM   |         |                             |                                 |                              |              |         |                             |               |         |                             |  |
|--------------|---------------|---------|-----------------------------|---------------------------------|------------------------------|--------------|---------|-----------------------------|---------------|---------|-----------------------------|--|
|              | NOVEMBER 2009 |         |                             |                                 |                              | OCTOBER 2009 |         |                             | NOVEMBER 2008 |         |                             |  |
|              | HOUSEHOLDS    | PERSONS | TOTAL<br>COUPON<br>ISSUANCE | AVERAGE<br>ALLOT./<br>HOUSEHOLD | AVERAGE<br>ALLOT./<br>PERSON | HOUSEHOLDS   | PERSONS | TOTAL<br>COUPON<br>ISSUANCE | HOUSEHOLDS    | PERSONS | TOTAL<br>COUPON<br>ISSUANCE |  |
| ARIZONA      | 420,349       | 986,276 | 128,982,371                 | 306.85                          | 130.78                       | 7,065        | 14,114  | 1,606,515                   | 122,836       | 264,958 | 48,141,006                  |  |
| DISTRICT I   |               |         |                             |                                 |                              |              |         |                             |               |         |                             |  |
| MARICOPA     | 227,961       | 536,383 | 71,402,135                  | 313.22                          | 133.12                       | 5,623        | 12,494  | 1,460,996                   | 75,719        | 164,476 | 28,860,853                  |  |
| DISTRICT II  |               |         |                             |                                 |                              |              |         |                             |               |         |                             |  |
| PIMA         | 72,382        | 157,310 | 20,865,085                  | 288.26                          | 132.64                       | 1,186        | 1,895   | 236,913                     | 20,306        | 39,250  | 7,605,813                   |  |
| DISTRICT III |               |         |                             |                                 |                              |              |         |                             |               |         |                             |  |
| APACHE       | 9,164         | 26,586  | 3,271,528                   | 357.00                          | 123.05                       | 2,244        | 5,706   | 691,461                     | 2,402         | 6,305   | 1,093,823                   |  |
| COCONINO     | 8,991         | 22,884  | 2,882,560                   | 320.61                          | 125.96                       | 82           | (1,588) | (136,792)                   | 2,678         | 4,839   | 995,911                     |  |
| NAVAJO       | 11,931        | 32,186  | 4,015,319                   | 336.55                          | 124.75                       | (2,501)      | (6,600) | (812,636)                   | 1,266         | 2,728   | 871,945                     |  |
| YAVAPAI      | 13,070        | 26,887  | 3,428,631                   | 262.33                          | 127.52                       | 326          | 603     | 84,388                      | 4,220         | 8,613   | 1,417,204                   |  |
| DISTRICT IV  |               |         |                             |                                 |                              |              |         |                             |               |         |                             |  |
| LA PAZ       | 1,824         | 3,842   | 502,011                     | 275.23                          | 130.66                       | 38           | 77      | 10,011                      | 320           | 609     | 133,962                     |  |
| MOHAVE       | 18,278        | 39,599  | 5,048,931                   | 276.23                          | 127.50                       | 799          | 3,914   | 399,689                     | 4,420         | 10,842  | 1,777,897                   |  |
| YUMA         | 14,803        | 39,685  | 4,737,145                   | 320.01                          | 119.37                       | 56           | 84      | 25,639                      | 2,741         | 7,016   | 1,412,124                   |  |
| DISTRICT V   |               |         |                             |                                 |                              |              |         |                             |               |         |                             |  |
| GILA         | 24,666        | 59,964  | 7,793,376                   | 315.96                          | 129.97                       | (906)        | (2,842) | (390,835)                   | 5,244         | 11,615  | 2,364,434                   |  |
| PINAL        | 5,335         | 11,881  | 1,572,820                   | 294.81                          | 132.38                       | (180)        | (636)   | (87,378)                    | 1,234         | 2,514   | 515,732                     |  |
| DISTRICT VI  |               |         |                             |                                 |                              |              |         |                             |               |         |                             |  |
| COCHISE      | 19,331        | 48,083  | 6,220,556                   | 321.79                          | 129.37                       | (726)        | (2,206) | (303,457)                   | 4,010         | 9,101   | 1,848,702                   |  |
| GRAHAM       | 17,279        | 40,950  | 5,035,650                   | 291.43                          | 122.97                       | 118          | 371     | 37,681                      | 3,520         | 8,665   | 1,607,040                   |  |
| GREENLEE     | 9,560         | 21,013  | 2,624,859                   | 274.57                          | 124.92                       | 224          | 570     | 66,865                      | 1,420         | 2,978   | 702,724                     |  |
| SANTA CRUZ   | 3,093         | 7,498   | 928,494                     | 300.19                          | 123.83                       | 147          | 339     | 48,431                      | 1,032         | 2,714   | 403,717                     |  |
|              | 523           | 1,255   | 141,849                     | 271.22                          | 113.03                       | 50           | 143     | 12,925                      | 277           | 767     | 88,457                      |  |
|              | 4,103         | 11,184  | 1,340,448                   | 326.70                          | 119.85                       | (303)        | (681)   | (90,540)                    | 791           | 2,206   | 412,142                     |  |

1/EXCLUDES: PRIOR MONTH NET TOTALS OF : 10,915 CASES; 27,146 RECIPIENTS; \$1,977,952.  
 AGED CANCELATIONS: 6,610 CASES; 9,261 RECIPIENTS; 340,699.  
 SNAP COUPON CONVERSIONS: 0 CASES; 0 RECIPIENTS; \$0.  
 SNAP REINSTATED: 0 CASES; \$0.  
 SNAP ZERO PAY: 12,012 CASES; 49,211 RECIPIENTS.  
 SNAP CHILD ONLY: 48,695; 109,890; \$17,165,272.

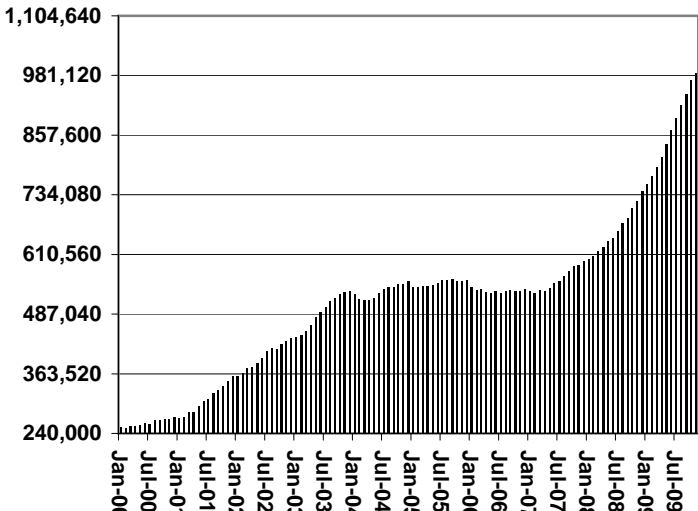
# CHART 6

## SUPPLEMENTAL NUTRITION ASSISTANCE PROGRAM (SNAP) COMPARISON OF HOUSEHOLDS, RECIPIENTS, PAYMENTS & AVERAGE PAYMENTS FOR 1999, 2000, 2001, 2002, 2003, 2004, 2005, 2006, 2007, 2008, & 2009

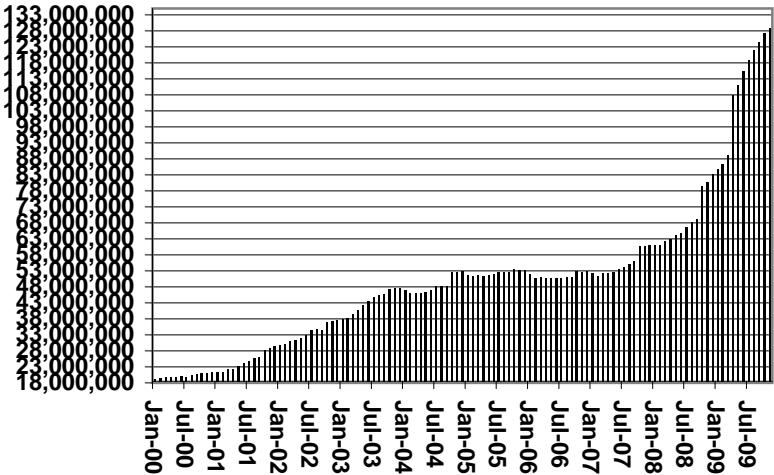
**Households**



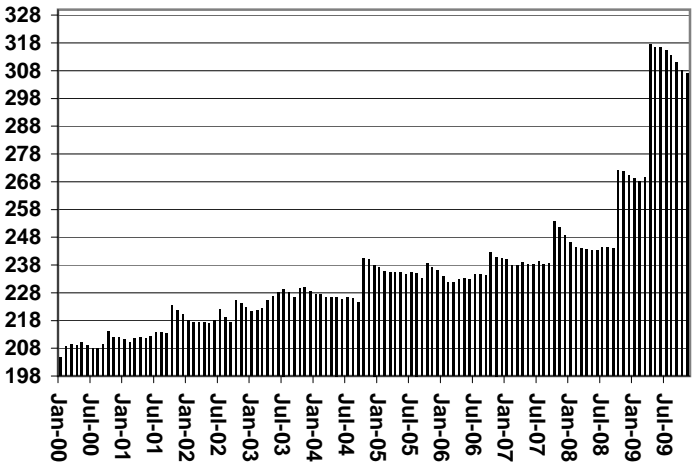
**Recipients**



**Payments**



**Average Payment Per Household**





**TABLE 7A**  
**MEDICAL ASSISTANCE PROGRAM**  
**RECIPIENTS**

**NOVEMBER 2009**

|              | SOBRA<br>WOMAN<br>133% FPL | SOBRA<br>CHILD | ADULT<br>W/O CHILD<br>100% FPL | FOSTER<br>CARE | 1931<br>36% FPL | FEDERAL<br>EMERGENCY<br>SERVICES | INFANTS | ADULT<br>W/O CHILD<br>40% FPL | MEDICAL<br>W/SPEND<br>DOWN | SOBRA<br>WOMAN<br>100% FPL | SOBRA<br>CHILD<br>100% FPL | TRANSITIONAL<br>MEDICAL<br>T1 - T4 | 1931<br>100% FPL | YATI | OTHER  | TOTAL<br>CASES |
|--------------|----------------------------|----------------|--------------------------------|----------------|-----------------|----------------------------------|---------|-------------------------------|----------------------------|----------------------------|----------------------------|------------------------------------|------------------|------|--------|----------------|
| ARIZONA      | 10,377                     | 67,117         | 56,837                         | 11,644         | 338,933         | 88,166                           | 50,495  | 152,542                       | 6,409                      | 3,800                      | 222,593                    | 38,879                             | 114,830          | 322  | 25,857 | 1,188,801      |
| DISTRICT I   |                            |                |                                |                |                 |                                  |         |                               |                            |                            |                            |                                    |                  |      |        |                |
| MARICOPA     | 5,524                      | 37,672         | 26,696                         | 5,960          | 188,776         | 68,907                           | 29,851  | 75,644                        | 3,406                      | 1,940                      | 129,417                    | 19,532                             | 57,723           | 192  | 13,043 | 664,283        |
| DISTRICT II  |                            |                |                                |                |                 |                                  |         |                               |                            |                            |                            |                                    |                  |      |        |                |
| PIMA         | 1,594                      | 10,319         | 10,575                         | 3,271          | 50,783          | 10,172                           | 7,208   | 27,491                        | 926                        | 538                        | 32,130                     | 5,933                              | 18,930           | 79   | 4,520  | 184,469        |
| DISTRICT III |                            |                |                                |                |                 |                                  |         |                               |                            |                            |                            |                                    |                  |      |        |                |
| APACHE       | 199                        | 1,406          | 1,025                          | 43             | 11,167          | 136                              | 1,008   | 5,140                         | 122                        | 103                        | 4,549                      | 846                                | 2,841            | 0    | 381    | 28,966         |
| COCONINO     | 288                        | 1,415          | 1,542                          | 141            | 8,185           | 539                              | 1,200   | 4,496                         | 124                        | 107                        | 5,122                      | 1,080                              | 3,107            | 10   | 361    | 27,717         |
| NAVAJO       | 309                        | 2,316          | 1,721                          | 139            | 12,664          | 391                              | 1,443   | 6,583                         | 197                        | 133                        | 5,799                      | 1,298                              | 3,888            | 4    | 552    | 37,437         |
| YAVAPAI      | 393                        | 1,798          | 2,559                          | 455            | 7,255           | 1,760                            | 1,371   | 4,995                         | 314                        | 130                        | 6,062                      | 1,583                              | 3,818            | 11   | 1,147  | 33,651         |
| DISTRICT IV  |                            |                |                                |                |                 |                                  |         |                               |                            |                            |                            |                                    |                  |      |        |                |
| LA PAZ       | 27                         | 217            | 266                            | 13             | 1,307           | 171                              | 145     | 779                           | 32                         | 23                         | 701                        | 184                                | 391              | 0    | 156    | 4,412          |
| MOHAVE       | 402                        | 2,231          | 2,949                          | 291            | 11,549          | 887                              | 1,601   | 7,235                         | 440                        | 196                        | 8,172                      | 1,716                              | 5,078            | 3    | 1,453  | 44,203         |
| YUMA         | 539                        | 2,628          | 2,931                          | 281            | 12,241          | 1,974                            | 1,995   | 4,470                         | 265                        | 228                        | 10,040                     | 2,461                              | 6,419            | 3    | 1,243  | 47,718         |
| DISTRICT V   |                            |                |                                |                |                 |                                  |         |                               |                            |                            |                            |                                    |                  |      |        |                |
| GILA         | 123                        | 668            | 744                            | 94             | 4,467           | 176                              | 556     | 2,554                         | 101                        | 35                         | 1,989                      | 425                                | 1,295            | 0    | 307    | 13,534         |
| PINAL        | 548                        | 4,049          | 2,633                          | 594            | 17,620          | 1,743                            | 2,219   | 7,694                         | 260                        | 181                        | 9,554                      | 1,853                              | 5,527            | 12   | 1,307  | 55,794         |
| DISTRICT VI  |                            |                |                                |                |                 |                                  |         |                               |                            |                            |                            |                                    |                  |      |        |                |
| COCHISE      | 230                        | 1,230          | 1,667                          | 251            | 6,693           | 620                              | 931     | 3,003                         | 99                         | 80                         | 4,089                      | 1,080                              | 2,661            | 6    | 802    | 23,442         |
| GRAHAM       | 97                         | 487            | 519                            | 73             | 2,526           | 64                               | 412     | 1,213                         | 63                         | 39                         | 1,484                      | 380                                | 1,040            | 1    | 141    | 8,539          |
| GREENLEE     | 13                         | 62             | 81                             | 8              | 372             | 10                               | 66      | 167                           | 10                         | 7                          | 283                        | 45                                 | 170              | 0    | 22     | 1,316          |
| SANTA CRUZ   | 91                         | 619            | 929                            | 30             | 3,328           | 616                              | 489     | 1,078                         | 50                         | 60                         | 3,202                      | 463                                | 1,942            | 1    | 422    | 13,320         |

**TABLE 7B**  
**MEDICAL ASSISTANCE PROGRAM**  
**RECIPIENTS**

**CHANGE FROM**  
**OCTOBER 2009**

|              | SOBRA<br>WOMAN<br>133% FPL | SOBRA<br>CHILD | ADULT<br>W/O CHILD<br>100% FPL | FOSTER<br>CARE | 1931<br>36% FPL | FEDERAL<br>EMERGENCY<br>SERVICES | INFANTS | ADULT<br>W/O CHILD<br>40% FPL | MEDICAL<br>W/SPEND<br>DOWN | SOBRA<br>WOMAN<br>100% FPL | SOBRA<br>CHILD<br>100% FPL | TRANSITIONAL<br>MEDICAL<br>T1 - T4 | 1931<br>100% FPL | YATI | OTHER | TOTAL<br>CASES |
|--------------|----------------------------|----------------|--------------------------------|----------------|-----------------|----------------------------------|---------|-------------------------------|----------------------------|----------------------------|----------------------------|------------------------------------|------------------|------|-------|----------------|
| ARIZONA      | (423)                      | (644)          | 1,147                          | 112            | (293)           | (1,670)                          | (164)   | 2,960                         | (252)                      | (126)                      | 1,713                      | 2,427                              | 829              | 3    | 260   | 5,879          |
| DISTRICT I   |                            |                |                                |                |                 |                                  |         |                               |                            |                            |                            |                                    |                  |      |       |                |
| MARICOPA     | (172)                      | (352)          | 738                            | 59             | 218             | (1,576)                          | (154)   | 1,693                         | (240)                      | (108)                      | 1,374                      | 908                                | 871              | 4    | 144   | 3,407          |
| DISTRICT II  |                            |                |                                |                |                 |                                  |         |                               |                            |                            |                            |                                    |                  |      |       |                |
| PIMA         | (63)                       | (81)           | 154                            | 38             | (299)           | (64)                             | (27)    | 518                           | 32                         | (22)                       | 137                        | 490                                | 51               | (2)  | 25    | 887            |
| DISTRICT III |                            |                |                                |                |                 |                                  |         |                               |                            |                            |                            |                                    |                  |      |       |                |
| APACHE       | (6)                        | (3)            | 0                              | 3              | (93)            | (2)                              | (11)    | 104                           | (4)                        | (5)                        | 87                         | 40                                 | 68               | 0    | 10    | 188            |
| COCONINO     | (19)                       | (47)           | 5                              | 0              | (132)           | (11)                             | 2       | 80                            | (16)                       | 6                          | 137                        | 17                                 | 45               | 1    | 5     | 73             |
| NAVAJO       | (30)                       | (14)           | (17)                           | 2              | 14              | 5                                | 21      | 147                           | 14                         | 3                          | (19)                       | 35                                 | 23               | 0    | (9)   | 175            |
| YAVAPAI      | (26)                       | (27)           | 71                             | 6              | (7)             | 13                               | (26)    | 61                            | (5)                        | 3                          | 50                         | 107                                | 8                | 0    | 21    | 249            |
| DISTRICT IV  |                            |                |                                |                |                 |                                  |         |                               |                            |                            |                            |                                    |                  |      |       |                |
| LA PAZ       | (2)                        | (6)            | 1                              | 0              | 20              | 1                                | (5)     | 26                            | 4                          | 2                          | 16                         | 3                                  | 8                | 0    | (1)   | 67             |
| MOHAVE       | (25)                       | (41)           | 44                             | 10             | (3)             | 29                               | 1       | 74                            | (11)                       | (4)                        | 102                        | 57                                 | 4                | 0    | 21    | 258            |
| YUMA         | (18)                       | (86)           | (50)                           | (1)            | 159             | (48)                             | (6)     | 78                            | (22)                       | 7                          | (235)                      | 367                                | (252)            | 0    | (24)  | (131)          |
| DISTRICT V   |                            |                |                                |                |                 |                                  |         |                               |                            |                            |                            |                                    |                  |      |       |                |
| GILA         | 1                          | (35)           | 32                             | 1              | (35)            | 0                                | 0       | 16                            | 7                          | (1)                        | (8)                        | 18                                 | (20)             | 0    | (10)  | (34)           |
| PINAL        | (25)                       | 83             | 117                            | (2)            | (47)            | (17)                             | 5       | 94                            | 18                         | (18)                       | 40                         | 186                                | 38               | 0    | 64    | 536            |
| DISTRICT VI  |                            |                |                                |                |                 |                                  |         |                               |                            |                            |                            |                                    |                  |      |       |                |
| COCHISE      | (17)                       | (29)           | 45                             | (4)            | (26)            | (6)                              | 30      | 42                            | (20)                       | (2)                        | 8                          | 97                                 | 8                | 0    | 16    | 142            |
| GRAHAM       | (12)                       | 2              | (8)                            | 0              | (28)            | 0                                | 4       | (3)                           | 3                          | 7                          | (14)                       | 72                                 | (30)             | 0    | (3)   | (10)           |
| GREENLEE     | (3)                        | (8)            | 7                              | 0              | (7)             | 1                                | 2       | (1)                           | (1)                        | (1)                        | 1                          | 11                                 | (12)             | 0    | 0     | (11)           |
| SANTA CRUZ   | (6)                        | 0              | 8                              | 0              | (27)            | 5                                | 0       | 31                            | (11)                       | 7                          | 37                         | 19                                 | 19               | 0    | 1     | 83             |

**TABLE 7C**  
**MEDICAL ASSISTANCE PROGRAM**  
**RECIPIENTS**

**CHANGE FROM**  
**NOVEMBER 2008**

|              | SOBRA<br>WOMAN<br>133% FPL | SOBRA<br>CHILD | ADULT<br>W/O CHILD<br>100% FPL | FOSTER<br>CARE | 1931<br>36% FPL | FEDERAL<br>EMERGENCY<br>SERVICES | INFANTS | ADULT<br>W/O CHILD<br>40% FPL | MEDICAL<br>W/SPEND<br>DOWN | SOBRA<br>WOMAN<br>100% FPL | SOBRA<br>CHILD<br>100% FPL | TRANSITIONAL<br>MEDICAL<br>T1 - T4 | 3E<br>1931<br>100% FPL | YATI | OTHER | TOTAL<br>CASES |
|--------------|----------------------------|----------------|--------------------------------|----------------|-----------------|----------------------------------|---------|-------------------------------|----------------------------|----------------------------|----------------------------|------------------------------------|------------------------|------|-------|----------------|
| ARIZONA      | (1,300)                    | 2,316          | 15,075                         | 705            | 47,592          | 4,425                            | 1,457   | 47,025                        | 580                        | 197                        | 45,977                     | (4,723)                            | 29,283                 | 56   | 603   | 189,268        |
| DISTRICT I   |                            |                |                                |                |                 |                                  |         |                               |                            |                            |                            |                                    |                        |      |       |                |
| MARICOPA     | (647)                      | 1,224          | 8,389                          | 398            | 31,794          | 4,365                            | 647     | 26,906                        | 429                        | 110                        | 29,523                     | (1,338)                            | 17,230                 | 46   | 517   | 119,593        |
| DISTRICT II  |                            |                |                                |                |                 |                                  |         |                               |                            |                            |                            |                                    |                        |      |       |                |
| PIMA         | (225)                      | 285            | 2,292                          | 205            | 6,150           | (212)                            | 364     | 8,162                         | 12                         | (48)                       | 5,277                      | (1,881)                            | 4,078                  | (1)  | 4     | 24,462         |
| DISTRICT III |                            |                |                                |                |                 |                                  |         |                               |                            |                            |                            |                                    |                        |      |       |                |
| APACHE       | (15)                       | (55)           | 197                            | 3              | 549             | 52                               | 54      | 979                           | 50                         | 15                         | 821                        | (237)                              | 568                    | (3)  | (18)  | 2,960          |
| COCONINO     | (75)                       | (32)           | 399                            | 7              | 832             | 15                               | 57      | 1,362                         | 0                          | (3)                        | 1,252                      | (207)                              | 846                    | 7    | 2     | 4,462          |
| NAVAJO       | (51)                       | 98             | 419                            | 2              | 1,302           | 65                               | 59      | 1,509                         | 28                         | 18                         | 1,037                      | (283)                              | 850                    | 0    | (35)  | 5,018          |
| YAVAPAI      | (23)                       | (6)            | 704                            | 2              | 1,199           | 296                              | 107     | 1,662                         | (8)                        | 9                          | 1,529                      | 237                                | 990                    | 0    | 71    | 6,769          |
| DISTRICT IV  |                            |                |                                |                |                 |                                  |         |                               |                            |                            |                            |                                    |                        |      |       |                |
| LA PAZ       | (14)                       | (16)           | 50                             | 5              | 90              | 3                                | (43)    | 143                           | 4                          | 10                         | 29                         | 22                                 | 29                     | 0    | (7)   | 305            |
| MOHAVE       | (39)                       | 151            | 795                            | 27             | 1,240           | 3                                | 28      | 1,717                         | 33                         | 42                         | 1,259                      | (230)                              | 969                    | 2    | 83    | 6,080          |
| YUMA         | (51)                       | 165            | 442                            | 8              | 1,003           | (137)                            | 68      | 877                           | 24                         | 26                         | 1,436                      | (162)                              | 1,006                  | 1    | (120) | 4,586          |
| DISTRICT V   |                            |                |                                |                |                 |                                  |         |                               |                            |                            |                            |                                    |                        |      |       |                |
| GILA         | (17)                       | (24)           | 152                            | 23             | 464             | 30                               | 67      | 451                           | 24                         | (8)                        | 314                        | (47)                               | 230                    | (1)  | (13)  | 1,645          |
| PINAL        | (56)                       | 370            | 637                            | 38             | 1,912           | (25)                             | (18)    | 1,993                         | (16)                       | 5                          | 1,821                      | (245)                              | 1,354                  | 1    | 79    | 7,850          |
| DISTRICT VI  |                            |                |                                |                |                 |                                  |         |                               |                            |                            |                            |                                    |                        |      |       |                |
| COCHISE      | (17)                       | 102            | 247                            | (11)           | 409             | (58)                             | 23      | 539                           | (28)                       | (6)                        | 497                        | (124)                              | 324                    | 3    | 24    | 1,924          |
| GRAHAM       | (41)                       | 29             | 147                            | (3)            | 315             | 2                                | 3       | 324                           | 22                         | 8                          | 510                        | (171)                              | 381                    | 0    | 3     | 1,529          |
| GREENLEE     | (7)                        | 29             | 43                             | 0              | 117             | 0                                | 18      | 62                            | 4                          | 2                          | 150                        | (5)                                | 110                    | 0    | 0     | 523            |
| SANTA CRUZ   | (22)                       | (4)            | 162                            | 1              | 216             | 26                               | 23      | 339                           | 2                          | 17                         | 522                        | (52)                               | 318                    | 1    | 13    | 1,562          |

# CHART 7

## MEDICAL ASSISTANCE PROGRAM

### COMPARISON OF RECIPIENTS

FOR 1999, 2000, 2001, 2002, 2003, 2004, 2005, 2006, 2007, 2008, & 2009

Total Recipients

