



DEPARTMENT OF ECONOMIC SECURITY

Your Partner For A Stronger Arizona

State of Arizona

Department of Economic Security

Family Assistance Administration

Statistical Bulletin

December, 2009

Phone: (602) 542-3678

<https://www.azdes.gov/appreports.aspx>

**** STATISTICAL BULLETIN ****
ARIZONA DEPARTMENT OF ECONOMIC SECURITY
FAMILY ASSISTANCE ADMINISTRATION
BOX 6123, PHOENIX, ARIZONA 85005
PHONE (602) 542-3678

DECEMBER 2009

THIS ISSUE OF THE STATISTICAL BULLETIN COMPARES DECEMBER 2009 DATA FOR EACH OF THE INDICATED PROGRAMS WITH THE INFORMATION FOR NOVEMBER 2009 AND DECEMBER 2008. STATEWIDE SUMMARIES OF ACTIVITY WITHIN EACH OF THE SPECIFIC PROGRAMS FOR THIS REPORT PERIOD ARE DISCUSSED BELOW. THE TABLES COMPARE CURRENT AND PRIOR MONTH DATA. DISTRICT AND COUNTY COMPARISONS ARE PROVIDED WITHIN THIS BULLETIN

TANF SUMMARY

COMPARING TO NOVEMBER 2009, DECEMBER 2009 CASES DECREASED BY 140 (0.35%) TO 39,858. RECIPIENTS DECREASED BY 469 (0.54%) TO 87,118. PAYMENTS DECREASED BY \$57,055 (0.67%) TO \$8,517,683. AVERAGE PAYMENT PER CASE DECREASED BY \$0.68 (0.32%) TO \$213.70. PAYMENT PER RECIPIENT DECREASED BY \$0.13 (0.13%) TO \$97.77.

COMPARING TO DECEMBER 2008, DECEMBER 2009 CASES INCREASED BY 463 (1.18%). RECIPIENTS INCREASED BY 703 (0.81%). TOTAL PAYMENTS DECREASED BY \$1,931,370 (18.48%). THE AVERAGE PAYMENT PER CASE DECREASED BY \$51.54 (19.43%). THE AVERAGE PAYMENT PER RECIPIENT DECREASED BY \$23.15 (19.15%).

CASH ASSISTANCE (CA)

COMPARING TO NOVEMBER 2009, DECEMBER 2009 CASES DECREASED BY 118 (0.31%) TO 37,492. RECIPIENTS DECREASED BY 362 (0.45%) TO 80,412. PAYMENTS DECREASED BY \$36,334 (0.45%) TO \$8,070,544. AVERAGE PAYMENT PER CASE DECREASED BY \$0.29 (0.13%) TO \$215.26. PAYMENT PER RECIPIENT INCREASED BY \$0.00 (0.00%) TO \$100.36.

COMPARING TO DECEMBER 2008, DECEMBER 2009 CASES INCREASED BY 246 (0.66%). RECIPIENTS INCREASED BY 790 (0.99%). TOTAL PAYMENTS DECREASED BY \$1,810,628 (18.32%). THE AVERAGE PAYMENT PER CASE DECREASED BY \$50.03 (18.86%). THE AVERAGE PAYMENT PER RECIPIENT DECREASED BY \$23.74 (19.13%).

CASH ASSISTANCE UNEMPLOYED PARENT PROGRAM (CA-UP)

COMPARING TO NOVEMBER 2009, DECEMBER 2009 CASES DECREASED BY 51 (3.57%) TO 1,378. RECIPIENTS DECREASED BY 218 (4.39%) TO 4,744. PAYMENTS DECREASED BY \$20,424 (5.13%) TO \$378,024. AVERAGE PAYMENT PER CASE DECREASED BY \$4.50 (1.61%) TO \$274.33. PAYMENT PER RECIPIENT DECREASED BY \$0.62 (0.77%) TO \$79.68.

COMPARING TO DECEMBER 2008, DECEMBER 2009 CASES DECREASED BY 42 (2.96%). RECIPIENTS DECREASED BY 514 (9.78%). TOTAL PAYMENTS DECREASED BY \$138,082 (26.75%). THE AVERAGE PAYMENT PER CASE DECREASED BY \$89.13 (24.52%). THE AVERAGE PAYMENT PER RECIPIENT DECREASED BY \$18.48 (18.82%).

CASH ASSISTANCE WITH GRANT UNDER \$100 (CA-MOE)

COMPARING TO NOVEMBER 2009, DECEMBER 2009 CASES INCREASED BY 33 (3.64%) TO 939. RECIPIENTS INCREASED BY 127 (7.44%) TO 1,835. PAYMENTS INCREASED BY \$286 (0.43%) TO \$66,355. AVERAGE PAYMENT PER CASE DECREASED BY \$2.25 (3.09%) TO \$70.67. AVERAGE PAYMENT PER RECIPIENT DECREASED BY \$2.52 (6.51%) TO \$36.16.

COMPARING TO DECEMBER 2008, DECEMBER 2009 CASES INCREASED BY 236 (33.57%). RECIPIENTS INCREASED BY 381 (26.20%). TOTAL PAYMENTS INCREASED BY \$16,016 (31.82%). THE AVERAGE PAYMENT PER CASE DECREASED BY \$0.94 (1.31%). THE AVERAGE PAYMENT PER RECIPIENT INCREASED BY \$1.54 (4.45%).

CASH ASSISTANCE UNEMPLOYED PARENT PROGRAM WITH GRANT UNDER \$100 (CA-UP-MOE) NEW PROGRAM STARTING 7/01

COMPARING TO NOVEMBER 2009, DECEMBER 2009 CASES DECREASED BY 4 (7.55%) TO 49. RECIPIENTS DECREASED BY 16 (11.19%) TO 127. PAYMENTS DECREASED BY \$583 (17.44%) TO \$2,760. AVERAGE PAYMENT PER CASE DECREASED BY \$6.75 (10.70%) TO \$56.33. PAYMENT PER RECIPIENT DECREASED BY \$1.65 (7.06%) TO \$21.73.

COMPARING TO DECEMBER 2008, DECEMBER 2009 CASES INCREASED BY 23 (88.46%). RECIPIENTS INCREASED BY 46 (1.38%). TOTAL PAYMENTS INCREASED BY \$1,324 (92.20%). THE AVERAGE PAYMENT PER CASE INCREASED BY \$1.10 (1.99%). THE AVERAGE PAYMENT PER RECIPIENT INCREASED BY \$4.00 (22.56%).

TUBERCULOSIS CONTROL PROGRAM (TC)

COMPARING TO NOVEMBER 2009, DECEMBER 2009 CASES DECREASED BY 1 (50.00%) TO 1. RECIPIENTS DECREASED BY 1 (50.00%) TO 1. PAYMENTS DECREASED BY \$108 (38.43%) TO \$173. AVERAGE PAYMENT PER CASE INCREASED BY \$73.20 (52.10%) TO \$213.70. AVERAGE PAYMENT PER RECIPIENT INCREASED BY \$32.50 (23.13%) TO \$173.00.

COMPARING TO DECEMBER 2008, DECEMBER 2009 CASES DECREASED BY 4 (80.00%). RECIPIENTS DECREASED BY 4 (80.00%). TOTAL PAYMENTS DECREASED BY \$497 (74.18%). THE AVERAGE PAYMENT PER CASE INCREASED BY \$79.70 (59.48%). THE AVERAGE PAYMENT PER RECIPIENT INCREASED BY \$39.00 (29.10%).

SUPPLEMENTAL NUTRITION ASSISTANCE PROGRAM (SNAP)

COMPARING TO NOVEMBER 2009, DECEMBER 2009 SUPPLEMENTAL NUTRITION ASSISTANCE HOUSEHOLDS INCREASED BY 9,021 (2.15%) TO 429,370. PERSONS RECEIVING SUPPLEMENTAL NUTRITION ASSISTANCE INCREASED BY 18,200 (1.85%) TO 1,004,476. TOTAL COUPON ISSUANCE INCREASED BY \$2,127,791 (1.65%) TO \$131,110,162. THE AVERAGE HOUSEHOLD ALLOTMENT DECREASED BY \$1.50 (0.49%) TO \$305.35. THE AVERAGE ALLOTMENT PER PERSON DECREASED BY \$0.25 (0.19%) TO \$130.53.

COMPARING TO DECEMBER 2008, DECEMBER 2009 SUPPLEMENTAL NUTRITION ASSISTANCE HOUSEHOLDS INCREASED BY 121,096 (39.28%). PERSONS RECEIVING SUPPLEMENTAL NUTRITION ASSISTANCE INCREASED BY 261,540 (35.20%). TOTAL COUPON ISSUANCE INCREASED BY \$47,757,835 (57.30%). THE AVERAGE ALLOTMENT PER HOUSEHOLD INCREASED BY \$34.97 (12.93%). THE AVERAGE ALLOTMENT PER PERSON INCREASED BY \$18.34 (16.34%).

MEDICAL ASSISTANCE PROGRAM (MA) NEW TABLE INCLUDES PROP. 204 CATEGORIES

COMPARING TO NOVEMBER 2009, DECEMBER 2009 TOTAL RECIPIENTS TOTAL RECIPIENTS INCREASED BY 3,072 (0.26%). SOBRA WOMEN AT 140% FPL DECREASED BY 83 (0.80%). SOBRA CHILDREN DECREASED BY 719 (1.07%). ADULTS W/O CHILD AT 100% INCREASED BY 854 (1.50%). FOSTER CARE INCREASED BY 136 (1.17%). 1931 AT 36% FPL DECREASED BY 2,083 (0.61%). EMERGENCY SERVICES DECREASED BY 3,292 (3.73%). INFANTS INCREASED BY 382 (0.76%). ADULT W/O CHILD AT 140% INCREASED BY 1,709 (1.12%). MEDICAL W/SPEND DOWN DECREASED BY 7 (0.11%). SOBRA WOMAN AT 100% DECREASED BY 40 (1.05%). SOBRA CHILD AT 100% INCREASED BY 2,414 (1.08%). TRANSITIONAL MEDICAL INCREASED BY 1,979 (5.09%). 1931 AT 100% INCREASED BY 1,448 (1.26%). YATI INCREASED BY 14 (4.35%). ALL OTHER CATEGORIES INCREASED BY 360 (1.39%).

COMPARING TO DECEMBER 2008, DECEMBER 2009 TOTAL RECIPIENTS TOTAL RECIPIENTS INCREASED BY 186,853 (18.59%). SOBRA WOMEN AT 140% FPL DECREASED BY 1,056 (9.30%). SOBRA CHILDREN INCREASED BY 1,827 (2.83%). ADULTS W/O CHILD AT 100% INCREASED BY 16,132 (38.82%). FOSTER CARE INCREASED BY 817 (7.45%). 1931 AT 36% FPL INCREASED BY 42,469 (14.43%). EMERGENCY SERVICES INCREASED BY 693 (0.82%). INFANTS INCREASED BY 1,859 (3.79%). ADULT W/O CHILD AT 140% INCREASED BY 48,254 (45.52%). MEDICAL W/SPEND DOWN INCREASED BY 832 (14.94%). SOBRA WOMAN AT 100% INCREASED BY 255 (7.28%). SOBRA CHILD AT 100% INCREASED BY 47,027 (26.42%). TRANSITIONAL MEDICAL DECREASED BY 2,714 (6.23%). 1931 AT 100% INCREASED BY 29,679 (34.27%). YATI INCREASED BY 68 (25.37%). ALL OTHER CATEGORIES INCREASED BY 711 (2.79%).

TANF SUMMARY

TABLES 1, 1A, 1B, & 1C: ARIZONA 1

	DECEMBER 2009							NOVEMBER 2009			CHANGE FROM DECEMBER 2008		
	FAMILIES (CASES)	PERSONS (RECIP.)	ADULTS	CHILDREN	TOTAL PAYMENTS	AVERAGE	AVERAGE	FAMILIES (CASES)	PERSONS (RECIP.)	TOTAL PAYMENTS	FAMILIES (CASES)	PERSONS (RECIP.)	TOTAL PAYMENTS
						PAYMENT/ CASE	PAYMENT/ RECIP.						
ARIZONA	39,858	87,118	21,693	65,425	8,517,683	213.70	97.77	(140)	(469)	(57,055)	463	703	(1,931,370)
DISTRICT I													
MARICOPA	24,489	54,353	12,943	41,410	5,199,901	212.34	95.67	10	(6)	(12,359)	1,599	3,393	(923,161)
DISTRICT II													
PIMA	6,605	13,573	3,570	10,003	1,376,840	208.45	101.44	(93)	(292)	(30,887)	(368)	(1,030)	(449,042)
DISTRICT III													
APACHE	2	7	1	6	613	306.50	87.57	0	2	174	(74)	(159)	(19,361)
COCONINO	223	491	116	375	47,188	211.61	96.11	(5)	(10)	312	(32)	(58)	(15,016)
NAVAJO	1,507	3,923	1,218	2,705	413,790	274.58	105.48	(3)	(66)	(1,781)	138	546	30,406
YAVAPAI	683	1,343	283	1,060	131,983	193.24	98.27	10	22	464	(52)	(108)	(50,046)
DISTRICT IV													
LA PAZ	179	385	118	267	35,306	197.24	91.70	4	5	812	(26)	(54)	(17,353)
MOHAVE	1,209	2,483	710	1,773	247,953	205.09	99.86	(7)	(3)	1,470	(180)	(516)	(113,536)
YUMA	978	2,152	447	1,705	207,753	212.43	96.54	(21)	(32)	(4,797)	(153)	(361)	(90,301)
DISTRICT V													
GILA	735	1,561	561	1,000	178,343	242.64	114.25	1	3	319	(12)	(17)	(16,475)
PINAL	1,903	4,179	1,083	3,096	396,598	208.41	94.90	(21)	(66)	(5,340)	(53)	(160)	(113,972)
DISTRICT VI													
COCHISE	785	1,537	354	1,183	160,378	204.30	104.34	(19)	(47)	(5,574)	(195)	(457)	(96,270)
GRAHAM	278	539	164	375	61,869	222.55	114.78	2	6	87	(70)	(158)	(25,042)
GREENLEE	25	51	11	40	5,426	217.04	106.39	2	5	800	(11)	(17)	(3,546)
SANTA CRUZ	257	541	114	427	53,742	209.11	99.34	0	10	(755)	(48)	(141)	(28,655)

1/EXCLUDES: PRIOR MONTH NET TOTALS OF 1,776 CASES; 4,301 RECIPIENTS; \$359,107.
 GRANT DIVERSION TOTALS OF: 858 CASES; \$655,560.
 ZERO PAY TOTALS OF 1,715 CASES; 5,203 RECIPIENTS.
 TANF CHILD ONLY CASES; 19,426 CASES; 32,693 RECIPIENTS; \$3,738,361.
 RRP: 770 CASES; 1,340 RECIPIENTS; \$179,169

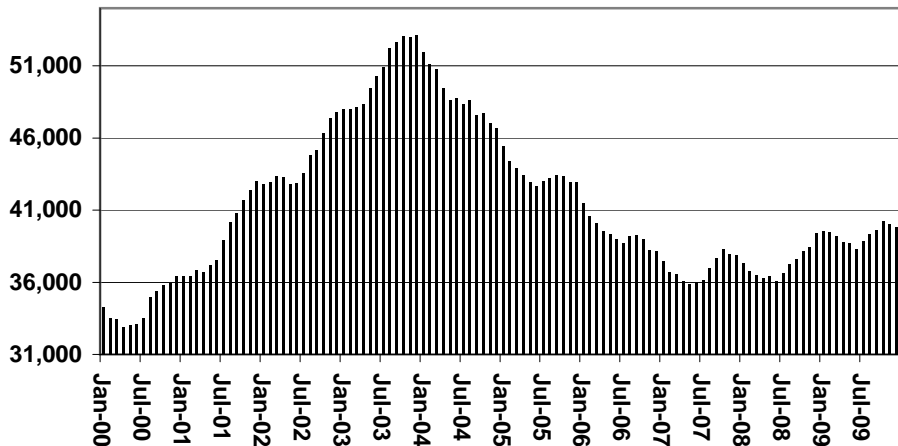
	CURRENT MO. CASES	CURRENT MO. RECIP.	CURRENT MO. DOLLARS	PRIOR MO. CASES	PRIOR MO. RECIP.	PRIOR MO. DOLLARS
PASQUAYAAQUI	386	1,129	\$116,611	19	63	7,358
WM APACHE	828	2,425	\$263,912	9	22	1,906
SALT RIVER	84	271	\$25,008	6	19	1,552
SAN CARLOS	595	1,318	\$156,837	16	41	6,671
HOPI	123	348	\$28,016	8	26	887
TOTAL	2,016	5,491	\$590,384	58	171	\$18,374

TANF SUMMARY

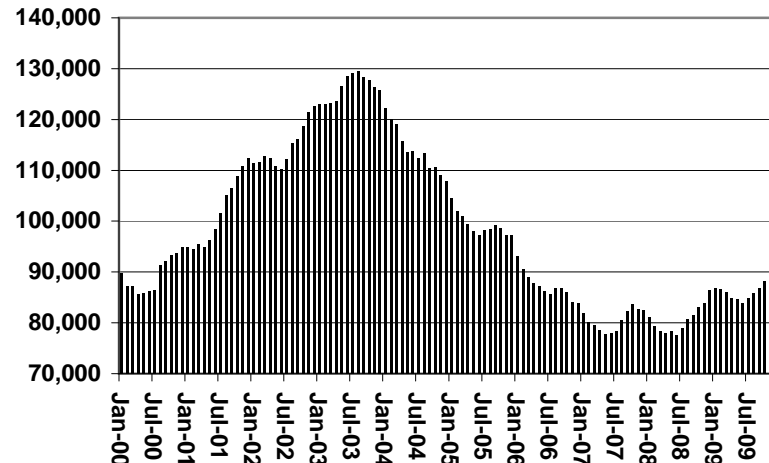
TABLES 1, 1A, 1B, & 1C

COMPARISON OF CASES, RECIPIENTS, PAYMENTS & AVERAGE PAYMENTS
FOR 2000, 2001, 2002, 2003, 2004, 2005, 2006, 2007, 2008, & 2009

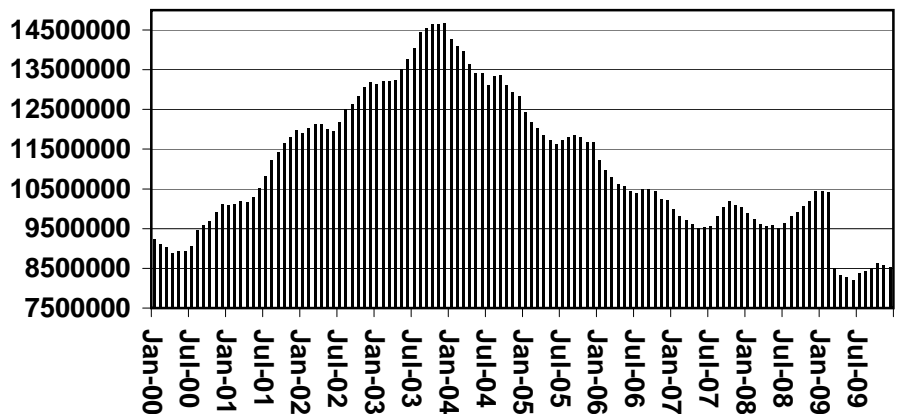
Cases



Recipients



Payments



Average Payments Per Recipient

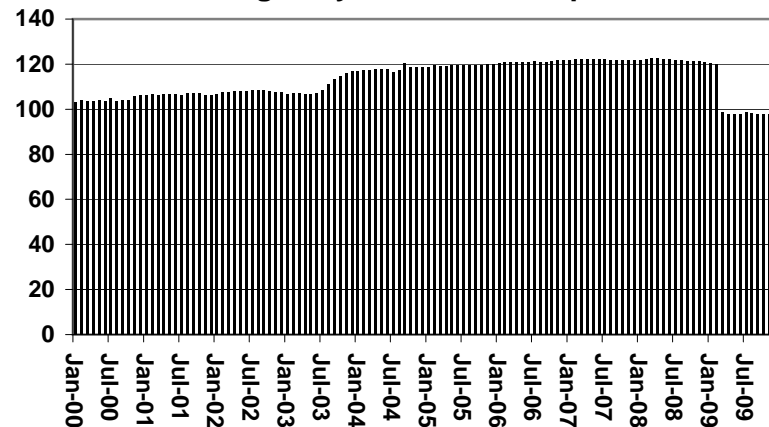
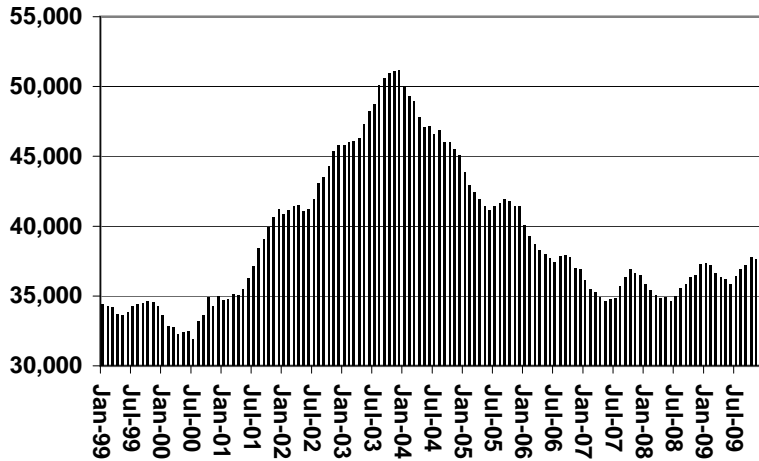


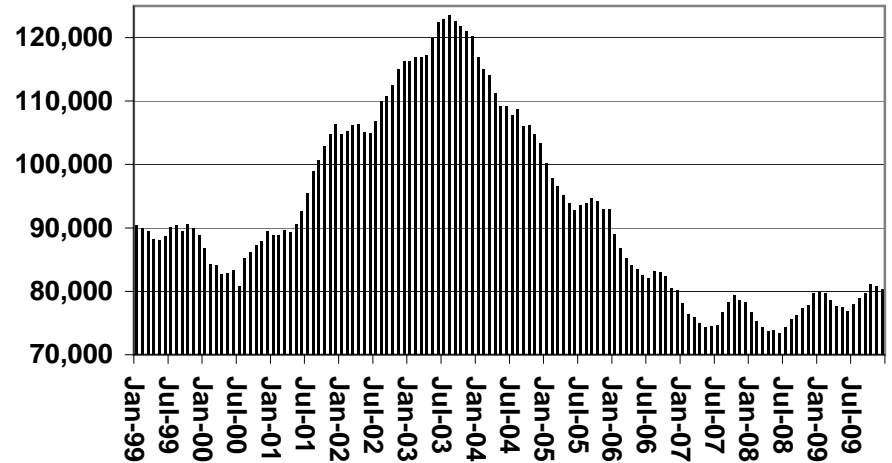
CHART 1

CASH ASSISTANCE PROGRAM COMPARISON OF CASES, RECIPIENTS, PAYMENTS & AVERAGE PAYMENTS FOR 1999, 2000, 2001, 2002, 2003, 2004, 2005, 2006, 2007, 2008, & 2009

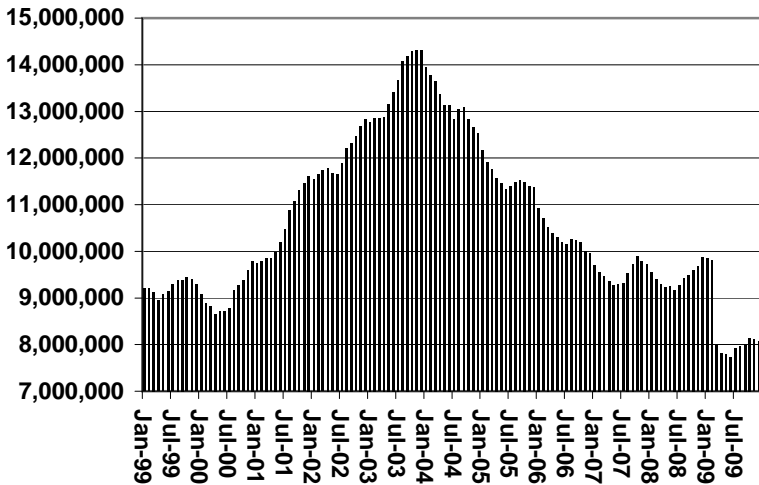
Cases



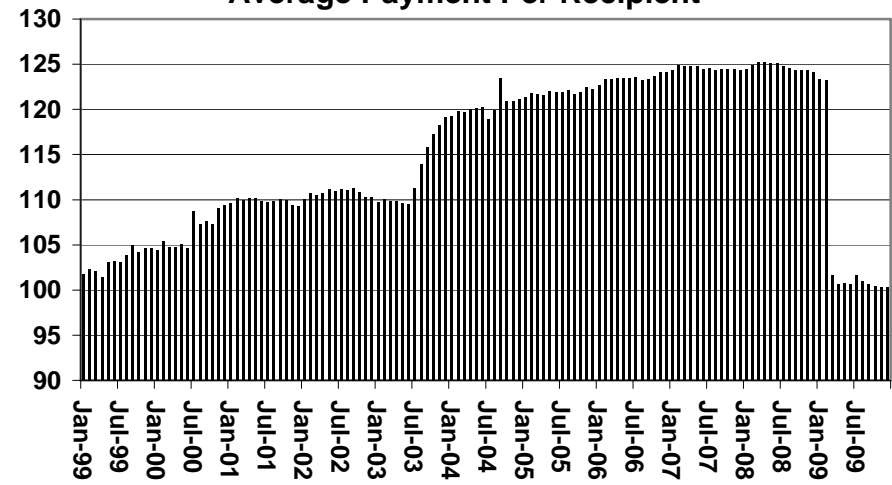
Recipients



Payments



Average Payment Per Recipient



**TABLE 1A
CA-UP**

CASH ASSISTANCE UNEMPLOYED PARENT PROGRAM: ARIZONA 1

	DECEMBER 2009							CHANGE FROM			NOVEMBER 2009			DECEMBER 2008		
	FAMILIES (CASES)	PERSONS (RECIP.)	ADULTS	CHILDREN	TOTAL PAYMENTS	AVERAGE PAYMENT/ CASE	AVERAGE PAYMENT/ RECIP.	FAMILIES (CASES)	PERSONS (RECIP.)	TOTAL PAYMENTS	FAMILIES (CASES)	PERSONS (RECIP.)	TOTAL PAYMENTS			
ARIZONA	1,378	4,744	1,740	3,004	378,024	274.33	79.68	(51)	(218)	(20,424)	(42)	(514)	(138,082)			
DISTRICT I																
MARICOPA	990	3,301	1,095	2,206	265,528	268.21	80.44	(9)	(71)	(7,935)	153	265	(38,083)			
DISTRICT II																
PIMA	217	814	363	451	64,480	297.14	79.21	(17)	(65)	(5,975)	(25)	(104)	(24,000)			
DISTRICT III																
APACHE	0	0	0	0	0	0.00	0.00	0	0	0	(5)	(24)	(2,194)			
COCONINO	2	9	4	5	727	363.50	80.78	0	0	0	(5)	(20)	(1,402)			
NAVAJO	20	65	38	27	6,105	305.25	93.92	(4)	(14)	(1,195)	(62)	(282)	(25,930)			
YAVAPAI	13	41	10	31	2,970	228.46	72.44	2	12	640	(11)	(35)	(4,331)			
DISTRICT IV																
LA PAZ	4	12	7	5	805	201.25	67.08	(2)	(9)	(462)	(5)	(26)	(2,971)			
MOHAVE	22	87	41	46	6,269	284.95	72.06	(6)	(18)	(1,487)	(39)	(144)	(16,007)			
YUMA	24	99	33	66	7,451	310.46	75.26	(1)	1	(269)	(6)	(12)	(3,673)			
DISTRICT V																
GILA	6	25	12	13	1,629	271.50	65.16	1	8	271	2	6	(257)			
PINAL	63	231	107	124	17,389	276.02	75.28	(15)	(63)	(3,779)	(18)	(65)	(10,614)			
DISTRICT VI																
COCHISE	11	39	20	19	3,032	275.64	77.74	(1)	(6)	(539)	(16)	(55)	(6,678)			
GRAHAM	3	10	4	6	891	297.00	89.10	0	0	0	(2)	(6)	(573)			
GREENLEE	1	4	2	2	273	273.00	68.25	1	4	273	0	0	(145)			
SANTA CRUZ	2	7	4	3	475	237.50	67.86	0	3	33	(3)	(12)	(1,224)			

1/EXCLUDES: PRIOR MONTH NET TOTALS OF: 131 CASES; 468 RECIPIENTS; \$53,484.
GRANT DIVERSION TOTALS OF: 0 CASES; \$0.
ZERO PAY TOTALS OF 93 CASES; 422 RECIPIENTS.

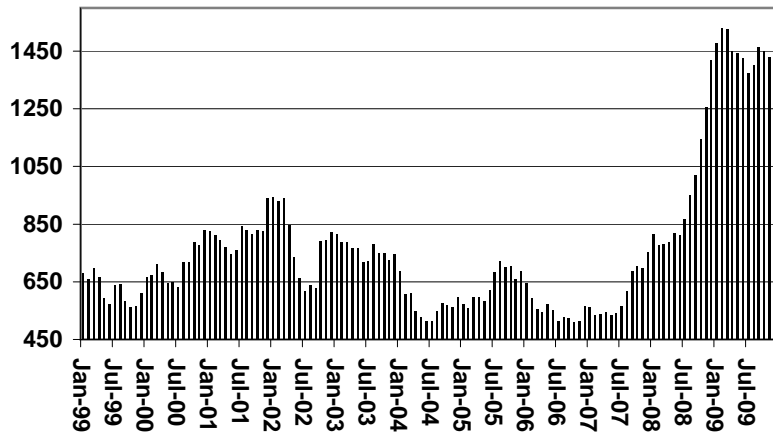
	CURRENT MO. CASES	CURRENT MO. RECIP.	CURRENT MO. DOLLARS	PRIOR MO. CASES	PRIOR MO. RECIP.	PRIOR MO. DOLLARS
PASQUAYAUQUI	21	94	7,614	2	8	792
WM APACHE	7	24	2,501	3	10	255
SALT RIVER	0	0	0	0	0	0
SAN CARLOS	0	0	0	0	0	0
HOPÍ	0	0	0	0	0	0
TOTAL	28	118	10,115	5	18	1,047

CASES WITH GRANT UNDER \$100 (SEE TABLE 1C).

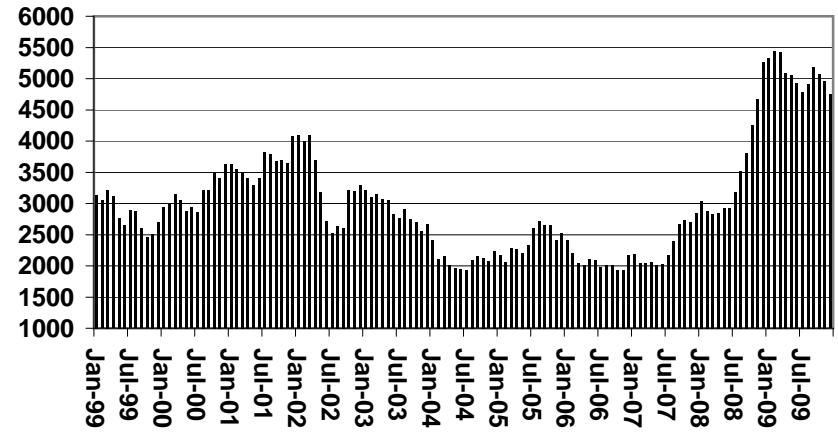
CHART 1A

CASH ASSISTANCE UNEMPLOYED PARENT PROGRAM COMPARISON OF CASES, RECIPIENTS, PAYMENTS & AVERAGE PAYMENTS FOR 1999, 2000, 2001, 2002, 2003, 2004, 2005, 2006, 2007, 2008, & 2009

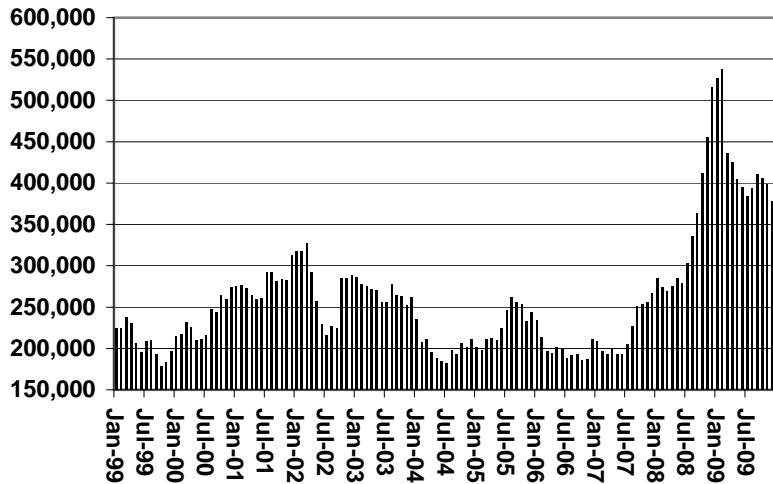
Cases



Recipients



Payments



Average Payment Per Recipient

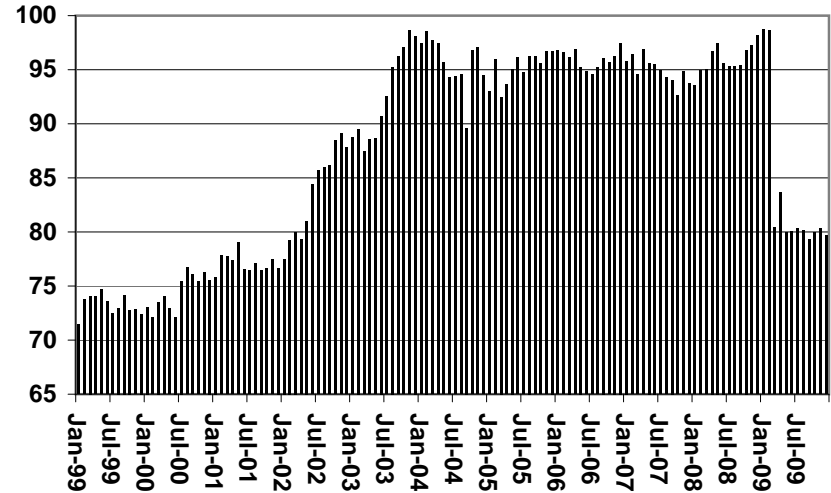


TABLE 1B 1/

CASH ASSISTANCE: ARIZONA
CASES WITH GRANT UNDER \$100

	DECEMBER 2009							CHANGE FROM			NOVEMBER 2009			DECEMBER 2008		
	FAMILIES (CASES)	PERSONS (RECIP.)	ADULTS	CHILDREN	TOTAL PAYMENTS	AVERAGE PAYMENT/ CASE	AVERAGE PAYMENT/ RECIP.	FAMILIES (CASES)	PERSONS (RECIP.)	TOTAL PAYMENTS	FAMILIES (CASES)	PERSONS (RECIP.)	TOTAL PAYMENTS			
	ARIZONA	939	1,835	473	1,362	66,355	70.67	36.16	33	127	286	236	381	16,016		
DISTRICT I																
MARICOPA	591	1,174	271	903	40,540	68.60	34.53	35	105	1,407	184	329	13,390			
DISTRICT II																
PIMA	150	280	87	193	11,407	76.05	40.74	(6)	5	(873)	36	57	3,116			
DISTRICT III																
APACHE	0	0	0	0	0	0.00	0.00	0	0	0	(4)	(9)	(277)			
COCONINO	2	5	2	3	178	89.00	35.60	(3)	(6)	(327)	(7)	(18)	(596)			
NAVAJO	14	26	8	18	920	65.71	35.38	1	2	94	3	4	(13)			
YAVAPAI	29	54	16	38	1,857	64.03	34.39	2	4	(31)	10	21	384			
DISTRICT IV																
LA PAZ	9	23	8	15	570	63.33	24.78	3	10	45	0	4	(231)			
MOHAVE	36	69	25	44	2,403	66.75	34.83	(7)	(12)	(635)	2	(2)	(372)			
YUMA	21	45	15	30	1,777	84.62	39.49	(2)	(4)	(211)	(3)	(10)	(196)			
DISTRICT V																
GILA	13	19	5	14	818	62.92	43.05	4	5	167	6	4	268			
PINAL	37	68	16	52	2,729	73.76	40.13	(2)	(5)	(91)	0	(16)	(117)			
DISTRICT VI																
COCHISE	25	44	11	33	2,150	86.00	48.86	3	9	376	6	7	287			
GRAHAM	6	12	4	8	537	89.50	44.75	1	3	(34)	1	2	244			
GREENLEE	0	0	0	0	98	0.00	0.00	0	0	98	0	0	98			
SANTA CRUZ	6	16	5	11	371	61.83	23.19	4	11	301	2	8	31			

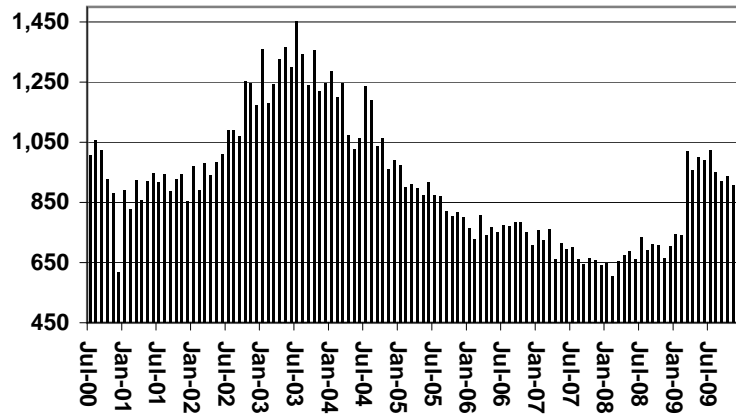
EXCLUDES: PRIOR MONTH NET TOTALS OF 747 CASES; 1,548 RECIPIENTS; \$48,192.

CHART 1B

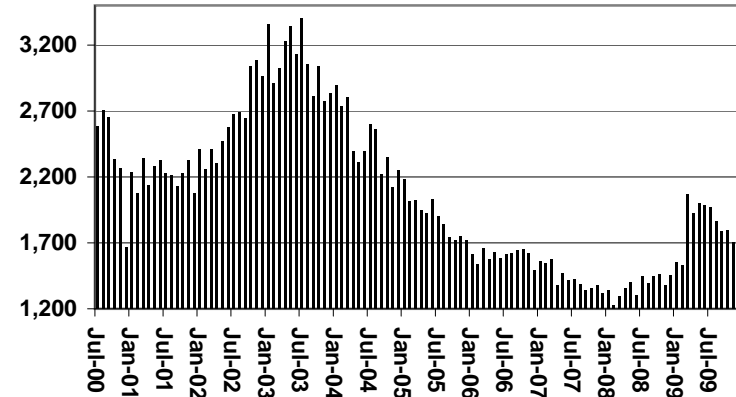
CASH ASSISTANCE PROGRAM CASES WITH GRANT UNDER \$100

FOR 1999, 2000, 2001, 2002, 2003, 2004, 2005, 2006, 2007, 2008, & 2009

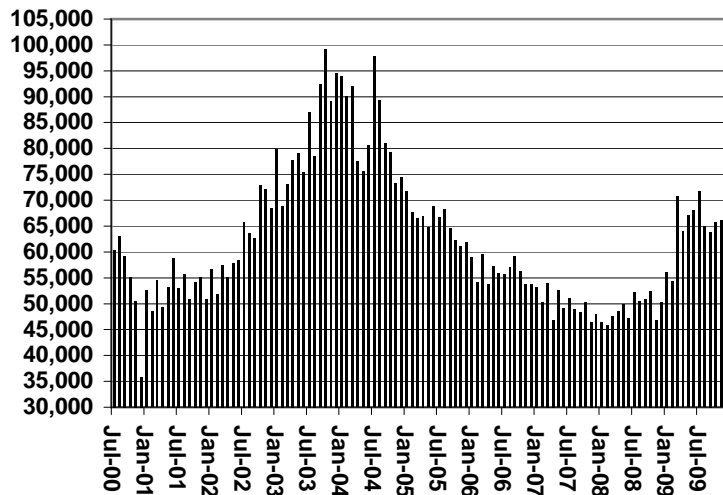
Cases



Recipients



Payments



Average Payment Per Recipient

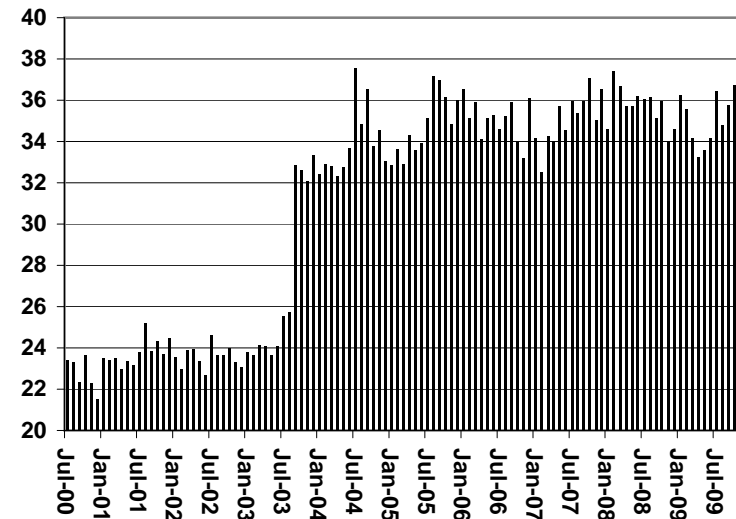


TABLE 1C 1/

CASH ASSISTANCE UNEMPLOYED PARENT PROGRAM: ARIZONA
 CASES WITH GRANT UNDER \$100

	DECEMBER 2009							CHANGE FROM			DECEMBER 2008		
					AVERAGE	AVERAGE							
	FAMILIES (CASES)	PERSONS (RECIP.)	ADULTS	CHILDREN	TOTAL PAYMENTS	PAYMENT/ CASE	PAYMENT/ RECIP.	FAMILIES (CASES)	PERSONS (RECIP.)	TOTAL PAYMENTS	FAMILIES (CASES)	PERSONS (RECIP.)	TOTAL PAYMENTS
ARIZONA	49	127	30	97	2,760	56.33	21.73	(4)	(16)	(583)	23	46	1,324
DISTRICT I													
MARICOPA	42	105	20	85	2,345	55.83	22.33	(1)	0	(298)	24	49	1,351
DISTRICT II													
PIMA	2	7	2	5	99	49.50	14.14	(2)	(13)	(153)	(3)	(10)	(106)
DISTRICT III													
APACHE	0	0	0	0	0	0.00	0.00	0	0	0	0	0	0
COCONINO	0	0	0	0	0	0.00	0.00	0	0	0	0	0	0
NAVAJO	0	0	0	0	0	0.00	0.00	0	0	0	0	0	0
YAVAPAI	2	5	2	3	163	81.50	32.60	(1)	(2)	(78)	1	4	66
DISTRICT IV													
LA PAZ	1	3	2	1	56	56.00	18.67	1	3	56	(1)	(4)	(84)
MOHAVE	0	0	0	0	0	0.00	0.00	0	0	0	(2)	(7)	(140)
YUMA	0	0	0	0	0	0.00	0.00	0	0	0	0	0	0
DISTRICT V													
GILA	0	0	0	0	0	0.00	0.00	0	0	0	0	0	0
PINAL	2	7	4	3	97	48.50	13.86	0	1	(34)	2	7	97
DISTRICT VI													
COCHISE	0	0	0	0	0	0.00	0.00	0	0	0	0	0	0
GRAHAM	0	0	0	0	0	0.00	0.00	0	0	0	0	0	0
GREENLEE	0	0	0	0	0	0.00	0.00	0	0	0	0	0	0
SANTA CRUZ	0	0	0	0	0	0.00	0.00	(1)	(5)	(76)	0	0	0

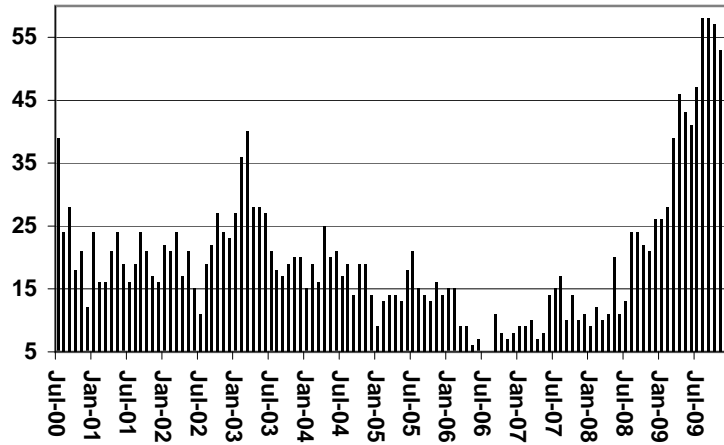
EXCLUDES: PRIOR MONTH NET TOTALS OF 65 CASES; 208 RECIPIENTS; \$3,713.

CHART 1C

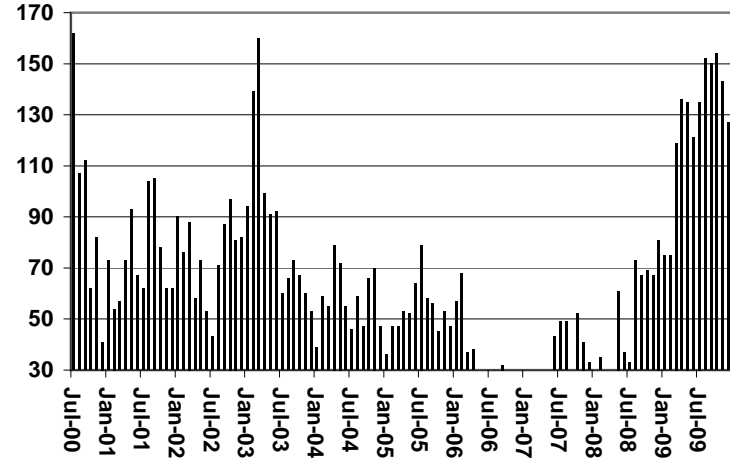
CASH ASSISTANCE UNEMPLOYED PARENT PROGRAM CASES WITH GRANT UNDER \$100

FOR 1999, 2000, 2001, 2002, 2003, 2004, 2005, 2006, 2007, 2008, & 2009

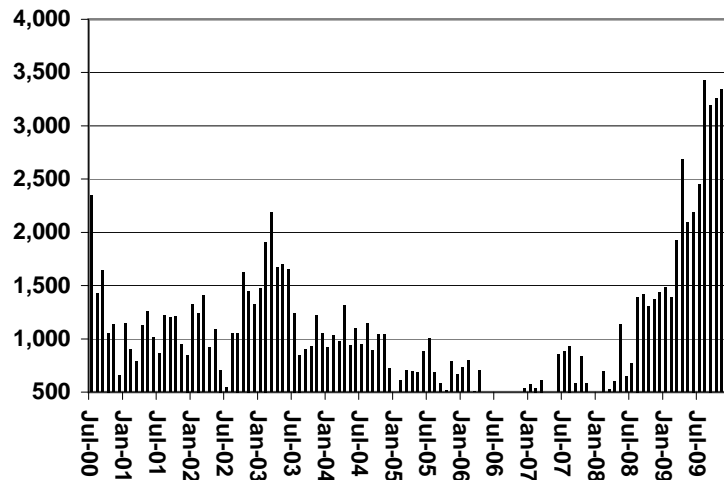
Cases



Recipients



Payments



Average Payment Per Recipient

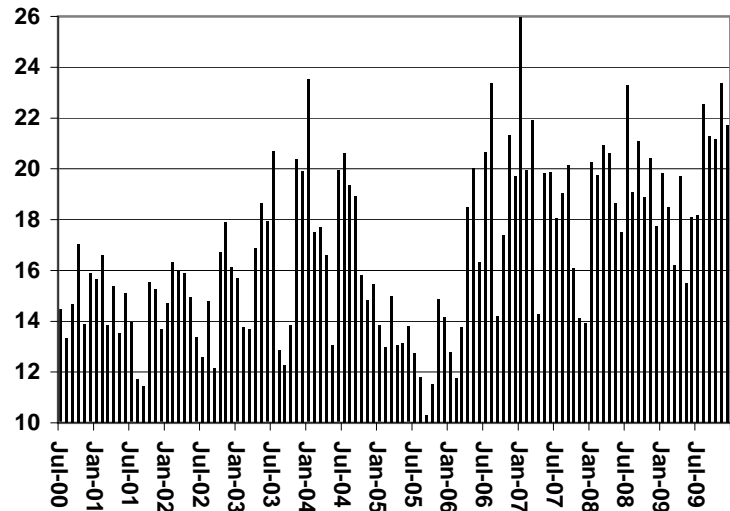


TABLE 4

TUBERCULOSIS CONTROL: ARIZONA 1/

	DECEMBER 2009					CHANGE FROM					
						NOVEMBER 2009			DECEMBER 2008		
	NUMBER OF CASES	PERSONS (RECIP.)	TOTAL PAYMENTS	AVERAGE PAYMENT/ CASE	AVERAGE PAYMENT/ RECIP.	NUMBER OF CASES	PERSONS (RECIP.)	TOTAL PAYMENTS	NUMBER OF CASES	PERSONS (RECIP.)	TOTAL PAYMENTS
ARIZONA	1	1	173	173.00	173.00	(1)	(1)	(108)	(4)	(4)	(497)
DISTRICT I											
MARICOPA	1	1	173	173.00	173.00	0	0	0	(4)	(4)	(497)
DISTRICT II											
PIMA	0	0	0	0.00	0.00	0	0	0	0	0	0
DISTRICT III											
APACHE	0	0	0	0.00	0.00	0	0	0	0	0	0
COCONINO	0	0	0	0.00	0.00	0	0	0	0	0	0
NAVAJO	0	0	0	0.00	0.00	0	0	0	0	0	0
YAVAPAI											
DISTRICT IV											
LA PAZ	0	0	0	0.00	0.00	0	0	0	0	0	0
MOHAVE	0	0	0	0.00	0.00	0	0	0	0	0	0
YUMA											
DISTRICT V											
GILA	0	0	0	0.00	0.00	0	0	0	0	0	0
PINAL	0	0	0	0.00	0.00	0	0	0	0	0	0
DISTRICT VI											
COCHISE	0	0	0	0.00	0.00	(1)	(1)	(108)	0	0	0
GRAHAM	0	0	0	0.00	0.00	(1)	(1)	(108)	0	0	0
GREENLEE	0	0	0	0.00	0.00	0	0	0	0	0	0
SANTA CRUZ	0	0	0	0.00	0.00	0	0	0	0	0	0

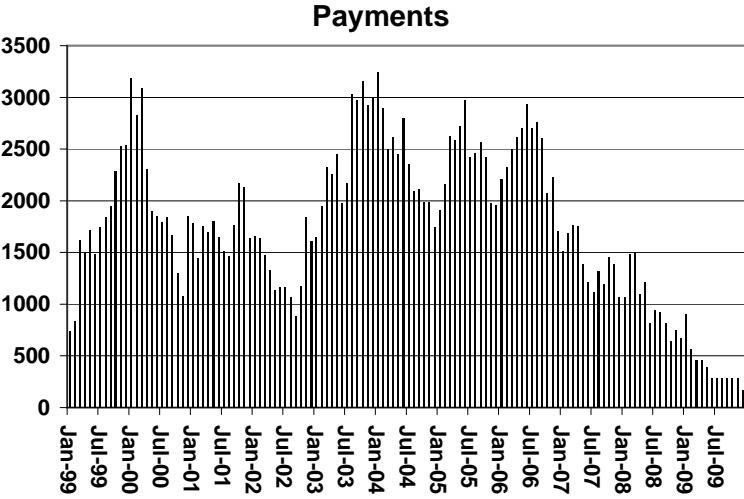
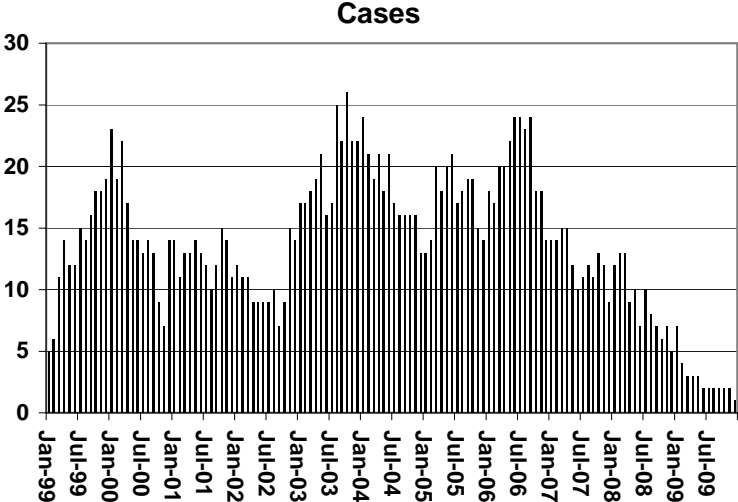
1/EXCLUDES: PRIOR MONTH NET TOTALS OF : 0 CASES; 0 RECIPIENTS; \$0.

CHART 4

TUBERCULOSIS CONTROL PROGRAM

COMPARISON OF CASES, PAYMENTS & AVERAGE PAYMENTS

FOR 1999, 2000, 2001, 2002, 2003, 2004, 2005, 2006, 2007, 2008, & 2009



Average Payment Per Case

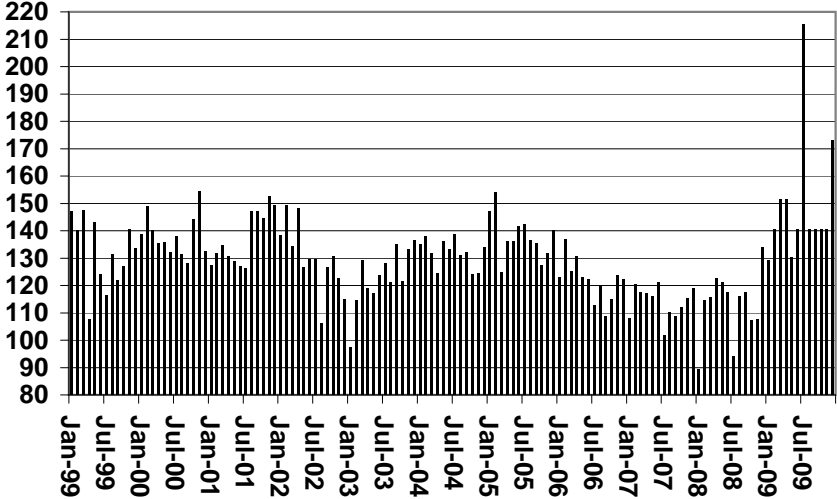


TABLE 6

SUPPLEMENTAL NUTRITION ASSISTANCE PROGRAM: ARIZONA 1/

CHANGE FROM

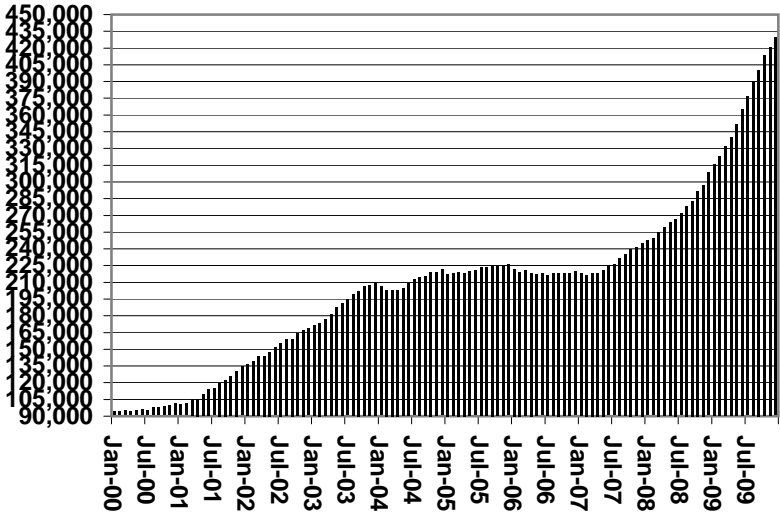
	DECEMBER 2009							NOVEMBER 2009			DECEMBER 2008		
	HOUSEHOLDS	PERSONS	ADULTS	CHILDREN	TOTAL COUPON ISSUANCE	AVERAGE ALLOT./ HOUSEHOLD	AVERAGE ALLOT./ PERSON	HOUSEHOLDS	PERSONS	TOTAL COUPON ISSUANCE	HOUSEHOLDS	PERSONS	TOTAL COUPON ISSUANCE
ARIZONA	429,370	1,004,476	492,400	512,076	131,110,162	305.35	130.53	9,021	18,200	2,127,791	121,096	261,540	47,757,835
DISTRICT I													
MARICOPA	234,080	548,551	248,465	300,086	72,854,300	311.24	132.81	6,119	12,168	1,452,165	75,459	163,829	28,733,353
DISTRICT II													
PIMA	73,505	159,457	85,112	74,345	21,097,555	287.02	132.31	1,123	2,147	232,470	19,761	38,647	7,518,658
DISTRICT III													
APACHE	9,218	26,752	13,991	12,761	3,277,993	355.61	122.53	54	166	6,465	2,392	6,343	1,105,947
COCONINO	9,116	23,097	11,976	11,121	2,906,643	318.85	125.85	125	213	24,083	2,508	4,219	933,079
NAVAJO	12,150	32,736	17,408	15,328	4,087,793	336.44	124.87	219	550	72,474	1,161	2,511	880,395
YAVAPAI	13,421	27,676	16,042	11,634	3,508,059	261.39	126.75	351	789	79,428	4,141	8,500	1,388,217
DISTRICT IV													
LA PAZ	1,852	3,899	2,203	1,696	509,206	274.95	130.60	28	57	7,195	340	642	137,337
MOHAVE	18,732	40,406	23,722	16,684	5,157,344	275.32	127.64	454	807	108,413	4,341	10,639	1,761,106
YUMA	14,798	39,631	19,603	20,028	4,730,945	319.70	119.37	(5)	(54)	(6,200)	2,674	7,056	1,413,103
DISTRICT V													
GILA	5,433	12,038	6,943	5,095	1,591,616	292.95	132.22	98	157	18,796	1,212	2,472	515,166
PINAL	19,618	48,975	24,869	24,106	6,301,010	321.19	128.66	287	892	80,454	3,759	8,597	1,787,335
DISTRICT VI													
COCHISE	9,671	21,224	11,796	9,428	2,659,792	275.03	125.32	111	211	34,933	1,471	3,073	726,919
GRAHAM	3,133	7,578	4,111	3,467	941,399	300.48	124.23	40	80	12,905	883	2,306	367,865
GREENLEE	521	1,220	669	551	142,521	273.55	116.82	(2)	(35)	672	214	567	72,189
SANTA CRUZ	4,122	11,236	5,490	5,746	1,343,986	326.05	119.61	19	52	3,538	780	2,139	417,166

1/EXCLUDES: PRIOR MONTH NET TOTALS OF : 11,548 CASES; 28,281 RECIPIENTS; \$3,287,475.
 AGED CANCELATIONS: 6,823 CASES; 9,612 RECIPIENTS; 322,404.
 SNAP COUPON CONVERSIONS: 0 CASES; 0 RECIPIENTS; \$0.
 SNAP REINSTATED: 0 CASES; \$0.
 SNAP ZERO PAY: 12,133 CASES; 22,078 RECIPIENTS.
 SNAP CHILD ONLY CASES; 48,405 CASES; 109,640 RECIPIENTS; \$17,082,841.

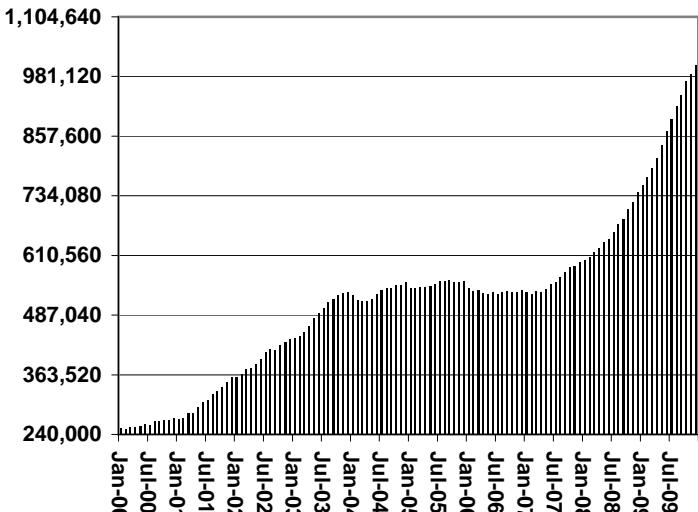
CHART 6

SUPPLEMENTAL NUTRITION ASSISTANCE PROGRAM (SNAP) COMPARISON OF HOUSEHOLDS, RECIPIENTS, PAYMENTS & AVERAGE PAYMENTS FOR 1999, 2000, 2001, 2002, 2003, 2004, 2005, 2006, 2007, 2008, & 2009

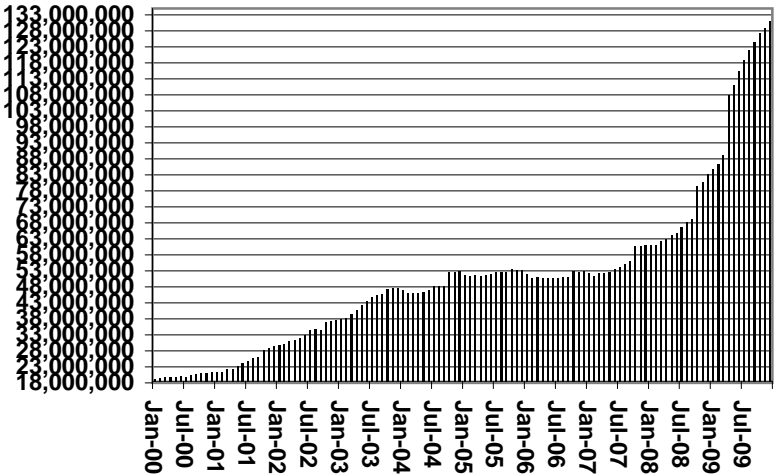
Households



Recipients



Payments



Average Payment Per Household

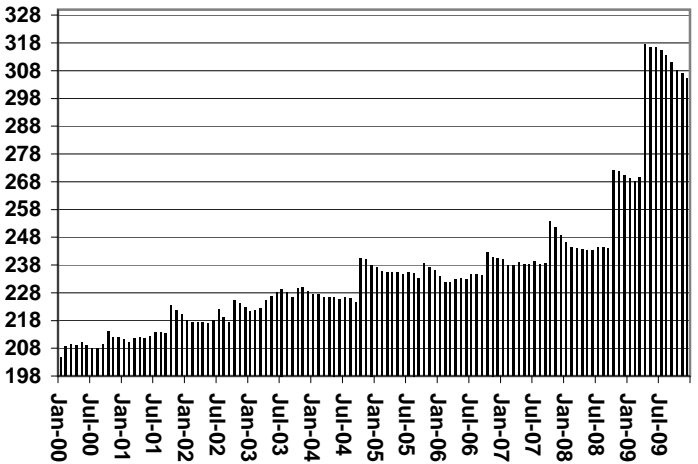


TABLE 7A
MEDICAL ASSISTANCE PROGRAM
RECIPIENTS

DECEMBER 2009

	SOBRA WOMAN 133% FPL	SOBRA CHILD	ADULT W/O CHILD 100% FPL	FOSTER CARE	1931 36% FPL	FEDERAL EMERGENCY SERVICES	INFANTS	ADULT W/O CHILD 40% FPL	MEDICAL W/SPEND DOWN	SOBRA WOMAN 100% FPL	SOBRA CHILD 100% FPL	TRANSITIONAL MEDICAL T1 - T4	1931 100% FPL	YATI	OTHER	TOTAL CASES
ARIZONA	10,294	66,398	57,691	11,780	336,850	84,874	50,877	154,251	6,402	3,760	225,007	40,858	116,278	336	26,217	1,191,873
DISTRICT I																
MARICOPA	5,540	37,412	27,391	6,050	188,283	66,252	30,240	76,876	3,443	1,892	131,252	20,262	58,885	210	13,218	667,206
DISTRICT II																
PIMA	1,594	10,135	10,702	3,284	50,010	9,806	7,148	27,614	869	549	32,476	6,440	19,117	74	4,540	184,358
DISTRICT III																
APACHE	182	1,410	988	45	10,928	129	1,008	5,197	110	104	4,628	940	2,894	1	382	28,946
COCONINO	295	1,417	1,604	139	8,230	526	1,193	4,520	133	107	5,098	1,059	3,069	9	382	27,781
NAVAJO	306	2,310	1,749	136	12,572	381	1,449	6,577	184	140	5,761	1,322	3,883	4	558	37,332
YAVAPAI	398	1,758	2,591	463	7,387	1,686	1,388	5,059	336	120	6,071	1,543	3,857	14	1,178	33,849
DISTRICT IV																
LA PAZ	31	224	267	17	1,250	158	139	796	32	25	696	192	405	0	161	4,393
MOHAVE	379	2,188	2,964	297	11,481	864	1,626	7,305	435	183	8,209	1,735	5,131	4	1,476	44,277
YUMA	522	2,565	2,858	290	12,002	1,906	1,998	4,469	269	239	10,042	2,716	6,333	4	1,262	47,475
DISTRICT V																
GILA	117	640	776	93	4,396	174	564	2,549	88	36	2,014	436	1,319	0	317	13,519
PINAL	521	4,014	2,664	598	17,439	1,707	2,217	7,778	283	188	9,698	2,029	5,619	10	1,325	56,090
DISTRICT VI																
COCHISE	210	1,199	1,656	254	6,693	606	932	3,053	101	84	4,144	1,088	2,688	4	824	23,536
GRAHAM	98	488	497	77	2,484	56	421	1,233	64	36	1,492	454	998	1	140	8,539
GREENLEE	12	57	82	8	375	7	70	163	9	8	279	64	177	0	24	1,335
SANTA CRUZ	89	581	902	29	3,320	616	484	1,062	46	49	3,147	578	1,903	1	430	13,237

TABLE 7B
MEDICAL ASSISTANCE PROGRAM
RECIPIENTS

CHANGE FROM
NOVEMBER 2009

	SOBRA WOMAN 133% FPL	SOBRA CHILD	ADULT W/O CHILD 100% FPL	FOSTER CARE	1931 36% FPL	FEDERAL EMERGENCY SERVICES	INFANTS	ADULT W/O CHILD 40% FPL	MEDICAL W/SPEND DOWN	SOBRA WOMAN 100% FPL	SOBRA CHILD 100% FPL	TRANSITIONAL MEDICAL T1 - T4	1931 100% FPL	YATI	OTHER	TOTAL CASES
ARIZONA	(83)	(719)	854	136	(2,083)	(3,292)	382	1,709	(7)	(40)	2,414	1,979	1,448	14	360	3,072
DISTRICT I																
MARICOPA	16	(260)	695	90	(493)	(2,655)	389	1,232	37	(48)	1,835	730	1,162	18	175	2,923
DISTRICT II																
PIMA	0	(184)	127	13	(773)	(366)	(60)	123	(57)	11	346	507	187	(5)	20	(111)
DISTRICT III	(8)	(40)	85	5	(154)	(104)	16	139	6	(2)	26	57	49	3	59	137
APACHE	(17)	4	(37)	2	(239)	(7)	0	57	(12)	1	79	94	53	1	1	(20)
COCONINO	7	2	62	(2)	45	(13)	(7)	24	9	0	(24)	(21)	(38)	(1)	21	64
NAVAJO	(3)	(6)	28	(3)	(92)	(10)	6	(6)	(13)	7	(38)	24	(5)	0	6	(105)
YAVAPAI	5	(40)	32	8	132	(74)	17	64	22	(10)	9	(40)	39	3	31	198
DISTRICT IV	(36)	(99)	(57)	19	(364)	(104)	22	86	(1)	0	34	282	(19)	2	47	(188)
LA PAZ	4	7	1	4	(57)	(13)	(6)	17	0	2	(5)	8	14	0	5	(19)
MOHAVE	(23)	(43)	15	6	(68)	(23)	25	70	(5)	(13)	37	19	53	1	23	74
YUMA	(17)	(63)	(73)	9	(239)	(68)	3	(1)	4	11	2	255	(86)	1	19	(243)
DISTRICT V	(33)	(63)	63	3	(252)	(38)	6	79	10	8	169	187	116	(2)	28	281
GILA	(6)	(28)	32	(1)	(71)	(2)	8	(5)	(13)	1	25	11	24	0	10	(15)
PINAL	(27)	(35)	31	4	(181)	(36)	(2)	84	23	7	144	176	92	(2)	18	296
DISTRICT VI	(22)	(73)	(59)	6	(47)	(25)	9	50	(2)	(9)	4	216	(47)	(2)	31	30
COCHISE	(20)	(31)	(11)	3	0	(14)	1	50	2	4	55	8	27	(2)	22	94
GRAHAM	1	1	(22)	4	(42)	(8)	9	20	1	(3)	8	74	(42)	0	(1)	0
GREENLEE	(1)	(5)	1	0	3	(3)	4	(4)	(1)	1	(4)	19	7	0	2	19
SANTA CRUZ	(2)	(38)	(27)	(1)	(8)	0	(5)	(16)	(4)	(11)	(55)	115	(39)	0	8	(83)

TABLE 7C
MEDICAL ASSISTANCE PROGRAM
RECIPIENTS

CHANGE FROM
DECEMBER 2008

	SOBRA WOMAN 133% FPL	SOBRA CHILD	ADULT W/O CHILD 100% FPL	FOSTER CARE	1931 36% FPL	FEDERAL EMERGENCY SERVICES	INFANTS	ADULT W/O CHILD 40% FPL	MEDICAL W/SPEND DOWN	SOBRA WOMAN 100% FPL	SOBRA CHILD 100% FPL	TRANSITIONAL MEDICAL T1 - T4	3E 1931 100% FPL	YATI	OTHER	TOTAL CASES
ARIZONA	(1,056)	1,827	16,132	817	42,469	693	1,859	48,254	832	255	47,027	(2,714)	29,679	68	711	186,853
DISTRICT I																
MARICOPA	(410)	1,152	9,142	495	29,046	1,122	1,076	27,872	621	121	30,402	(901)	17,802	65	606	118,211
DISTRICT II																
PIMA	(174)	200	2,508	175	5,532	(524)	271	8,361	(14)	(1)	5,517	(1,304)	4,054	(12)	(51)	24,538
DISTRICT III	(177)	(126)	1,768	27	3,250	287	292	5,552	66	45	4,452	(208)	3,131	6	82	18,447
APACHE	(26)	4	185	5	304	44	52	1,072	37	13	866	(107)	623	(2)	(9)	3,061
COCONINO	(72)	(56)	437	7	768	1	55	1,404	(4)	1	1,196	(186)	731	5	13	4,300
NAVAJO	(69)	8	432	3	1,117	41	65	1,454	21	26	884	(139)	803	1	(36)	4,611
YAVAPAI	(10)	(82)	714	12	1,061	201	120	1,622	12	5	1,506	224	974	2	114	6,475
DISTRICT IV	(131)	214	1,308	73	1,743	(133)	69	2,764	88	85	2,879	(138)	2,071	4	(14)	10,882
LA PAZ	(4)	(1)	53	9	(1)	3	(46)	155	(1)	9	77	8	68	0	(11)	318
MOHAVE	(72)	104	777	44	1,024	(9)	53	1,688	35	24	1,288	(232)	962	2	75	5,763
YUMA	(55)	111	478	20	720	(127)	62	921	54	52	1,514	86	1,041	2	(78)	4,801
DISTRICT V	(59)	333	862	62	2,015	(6)	64	2,464	70	(14)	2,154	(98)	1,555	1	58	9,461
GILA	(25)	(25)	205	21	390	32	73	428	18	(19)	337	(48)	257	0	(23)	1,621
PINAL	(34)	358	657	41	1,625	(38)	(9)	2,036	52	5	1,817	(50)	1,298	1	81	7,840
DISTRICT VI	(105)	54	544	(15)	883	(53)	87	1,241	1	19	1,623	(65)	1,066	4	30	5,314
COCHISE	(32)	42	272	(11)	411	(75)	19	568	(21)	2	574	(136)	346	2	29	1,990
GRAHAM	(49)	32	113	(1)	245	2	16	314	27	8	465	(34)	322	1	2	1,463
GREENLEE	(7)	25	39	0	90	(3)	16	54	6	2	146	30	109	0	3	510
SANTA CRUZ	(17)	(45)	120	(3)	137	23	36	305	(11)	7	438	75	289	1	(4)	1,351

CHART 7

MEDICAL ASSISTANCE PROGRAM

COMPARISON OF RECIPIENTS

FOR 1999, 2000, 2001, 2002, 2003, 2004, 2005, 2006, 2007, 2008, & 2009

Total Recipients

