



State of Arizona

Department of Economic Security

Family Assistance Administration

Statistical Bulletin

January, 2008

Phone: (602) 542-3678

<http://www.azdes.gov/faa/Statistics.asp>

**** STATISTICAL BULLETIN ****
ARIZONA DEPARTMENT OF ECONOMIC SECURITY
FAMILY ASSISTANCE ADMINISTRATION
BOX 6123, PHOENIX, ARIZONA 85005
PHONE (602) 542-3678

JANUARY 2008

THIS ISSUE OF THE STATISTICAL BULLETIN COMPARES JANUARY 2008 DATA FOR EACH OF THE INDICATED PROGRAMS WITH THE INFORMATION FOR DECEMBER 2007 AND JANUARY 2007. STATEWIDE SUMMARIES OF ACTIVITY WITHIN EACH OF THE SPECIFIC PROGRAMS FOR THIS REPORT PERIOD ARE DISCUSSED BELOW. THE TABLES COMPARE CURRENT AND PRIOR MONTH DATA. DISTRICT AND COUNTY COMPARISONS ARE PROVIDED WITHIN THIS BULLETIN

CASH ASSISTANCE (CA)

COMPARING TO DECEMBER 2007, JANUARY 2008 CASES DECREASED BY 615 (1.69%) TO 35,867. RECIPIENTS DECREASED BY 1,547 (1.98%) TO 76,672. PAYMENTS DECREASED BY \$180,919 (1.86%) TO \$9,546,400. AVERAGE PAYMENT PER CASE DECREASED BY \$0.47 (0.18%) TO \$266.16. PAYMENT PER RECIPIENT INCREASED BY \$0.15 (0.12%) TO \$124.51.

COMPARING TO JANUARY 2007, JANUARY 2008 CASES DECREASED BY 251 (0.69%). RECIPIENTS DECREASED BY 1,437 (1.84%). TOTAL PAYMENTS DECREASED BY \$165,619 (1.71%). THE AVERAGE PAYMENT PER CASE DECREASED BY \$2.74 (1.02%). THE AVERAGE PAYMENT PER RECIPIENT INCREASED BY \$0.17 (0.14%).

CASH ASSISTANCE UNEMPLOYED PARENT PROGRAM (CA-UP)

COMPARING TO DECEMBER 2007, JANUARY 2008 CASES INCREASED BY 62 (8.22%) TO 816. RECIPIENTS INCREASED BY 191 (6.70%) TO 3,042. PAYMENTS INCREASED BY \$17,331 (6.49%) TO \$284,539. AVERAGE PAYMENT PER CASE DECREASED BY \$5.69 (1.60%) TO \$348.70. PAYMENT PER RECIPIENT DECREASED BY \$0.18 (0.20%) TO \$93.54.

COMPARING TO JANUARY 2007, JANUARY 2008 CASES INCREASED BY 254 (45.20%). RECIPIENTS INCREASED BY 860 (39.41%). TOTAL PAYMENTS INCREASED BY \$75,526 (36.13%). THE AVERAGE PAYMENT PER CASE DECREASED BY \$23.21 (6.24%). THE AVERAGE PAYMENT PER RECIPIENT DECREASED BY \$2.25 (2.35%).

CASH ASSISTANCE WITH GRANT UNDER \$100 (CA-MOE)

COMPARING TO DECEMBER 2007, JANUARY 2008 CASES INCREASED BY 8 (1.25%) TO 648. RECIPIENTS INCREASED BY 26 (1.98%) TO 1,339. PAYMENTS DECREASED BY \$1,630 (3.40%) TO \$46,343. AVERAGE PAYMENT PER CASE DECREASED BY \$3.44 (4.59%) TO \$71.52. AVERAGE PAYMENT PER RECIPIENT DECREASED BY \$1.93 (5.28%) TO \$34.61.

COMPARING TO JANUARY 2007, JANUARY 2008 CASES DECREASED BY 108 (14.29%). RECIPIENTS DECREASED BY 224 (14.33%). TOTAL PAYMENTS DECREASED BY \$7,085 (13.26%). THE AVERAGE PAYMENT PER CASE INCREASED BY \$0.85 (1.20%). THE AVERAGE PAYMENT PER RECIPIENT INCREASED BY \$0.43 (1.26%).

CASH ASSISTANCE UNEMPLOYED PARENT PROGRAM WITH GRANT UNDER \$100 (CA-UP-MOE) NEW PROGRAM STARTING 7/01

COMPARING TO DECEMBER 2007, JANUARY 2008 CASES DECREASED BY 2 (18.18%) TO 9. RECIPIENTS DECREASED BY 12 (36.36%) TO 21. PAYMENTS DECREASED BY \$34 (7.41%) TO \$425. AVERAGE PAYMENT PER CASE INCREASED BY \$5.49 (13.16%) TO \$47.22. PAYMENT PER RECIPIENT INCREASED BY \$6.33 (45.51%) TO \$20.24.

COMPARING TO JANUARY 2007, JANUARY 2008 CASES INCREASED BY 0 (0.00%). RECIPIENTS DECREASED BY 1 (0.22%). TOTAL PAYMENTS DECREASED BY \$146 (25.57%). THE AVERAGE PAYMENT PER CASE DECREASED BY \$16.22 (25.57%). THE AVERAGE PAYMENT PER RECIPIENT DECREASED BY \$5.71 (22.00%).

GENERAL ASSISTANCE (GA)

COMPARING TO DECEMBER 2007, JANUARY 2008 CASES INCREASED BY 44 (3.32%) TO 1,369. RECIPIENTS INCREASED BY 43 (3.23%) TO 1,373. PAYMENTS INCREASED BY \$5,010 (2.48%) TO \$206,891. AVERAGE PAYMENT PER CASE DECREASED BY \$1.23 (0.81%) TO \$151.13. AVERAGE PAYMENT PER RECIPIENT DECREASED BY \$1.10 (0.72%) TO \$150.69.

COMPARING TO JANUARY 2007, JANUARY 2008 CASES INCREASED BY 38 (2.85%). RECIPIENTS INCREASED BY 35 (2.62%). TOTAL PAYMENTS INCREASED BY \$4,515 (2.23%). THE AVERAGE PAYMENT PER CASE DECREASED BY \$0.92 (0.60%). THE AVERAGE PAYMENT PER RECIPIENT DECREASED BY \$0.56 (0.37%).

TUBERCULOSIS CONTROL PROGRAM (TC)

COMPARING TO DECEMBER 2007, JANUARY 2008 CASES INCREASED BY 3 (33.33%) TO 12. RECIPIENTS INCREASED BY 3 (33.33%) TO 12. PAYMENTS INCREASED BY \$7 (0.66%) TO \$1,072. AVERAGE PAYMENT PER CASE DECREASED BY \$29.00 (24.51%) TO \$89.33. AVERAGE PAYMENT PER RECIPIENT DECREASED BY \$29.00 (24.51%) TO \$89.33.

COMPARING TO JANUARY 2007, JANUARY 2008 CASES DECREASED BY 2 (14.29%). RECIPIENTS DECREASED BY 2 (14.29%). TOTAL PAYMENTS DECREASED BY \$439 (29.05%). THE AVERAGE PAYMENT PER CASE DECREASED BY \$18.60 (17.23%). THE AVERAGE PAYMENT PER RECIPIENT DECREASED BY \$18.60 (17.23%).

SUPPLEMENTAL PAYMENTS PROGRAM (SPP)

AS A RESULT OF ARIZONA'S OMNIBUS BUDGET RECONCILIATION BILL, HB 2535, THE SUPPLEMENTAL PAYMENT PROGRAM (SPP) IS BEING SUSPENDED EFFECTIVE JULY, 2003 THROUGH JUNE, 2004.

FOOD STAMP PROGRAM (FS)

COMPARING TO DECEMBER 2007, JANUARY 2008 FOOD STAMP HOUSEHOLDS INCREASED BY 2,802 (1.14%) TO 248,027. PERSONS RECEIVING FOOD STAMPS INCREASED BY 4,078 (0.68%) TO 602,007. TOTAL COUPON ISSUANCE INCREASED BY \$59,026 (0.10%) TO \$61,062,371. THE AVERAGE HOUSEHOLD ALLOTMENT DECREASED BY \$2.57 (1.04%) TO \$246.19. THE AVERAGE ALLOTMENT PER PERSON DECREASED BY \$0.59 (0.58%) TO \$101.43.

COMPARING TO JANUARY 2007, JANUARY 2008 FOOD STAMP HOUSEHOLDS INCREASED BY 30,182 (13.85%). PERSONS RECEIVING FOOD STAMPS INCREASED BY 67,826 (12.70%). TOTAL COUPON ISSUANCE INCREASED BY \$8,806,344 (16.85%). THE AVERAGE ALLOTMENT PER HOUSEHOLD INCREASED BY \$6.31 (2.63%). THE AVERAGE ALLOTMENT PER PERSON INCREASED BY \$3.61 (3.69%).

MEDICAL ASSISTANCE PROGRAM (MA) NEW TABLE INCLUDES PROP. 204 CATEGORIES

COMPARING TO DECEMBER 2007, JANUARY 2008 TOTAL RECIPIENTS TOTAL RECIPIENTS INCREASED BY 2,041 (0.22%). SOBRA WOMEN AT 140% FPL INCREASED BY 109 (0.96%). SOBRA CHILDREN DECREASED BY 201 (0.32%). ADULTS W/O CHILD AT 100% INCREASED BY 125 (0.33%). FOSTER CARE INCREASED BY 37 (0.38%). 1931 AT 36% FPL DECREASED BY 837 (0.32%). EMERGENCY SERVICES DECREASED BY 273 (0.32%). INFANTS DECREASED BY 174 (0.34%). ADULT W/O CHILD AT 140% INCREASED BY 1,669 (1.85%). MEDICAL W/SPEND DOWN INCREASED BY 0 (0.00%). SOBRA WOMAN AT 100% DECREASED BY 74 (2.26%). SOBRA CHILD AT 100% INCREASED BY 217 (0.13%). TRANSITIONAL MEDICAL INCREASED BY 1,282 (2.95%). 1931 AT 100% INCREASED BY 14 (0.02%). YATI INCREASED BY 9 (3.83%). ALL OTHER CATEGORIES INCREASED BY 138 (0.61%).

COMPARING TO JANUARY 2007, JANUARY 2008 TOTAL RECIPIENTS TOTAL RECIPIENTS INCREASED BY 56,386 (6.52%). SOBRA WOMEN AT 140% FPL INCREASED BY 654 (6.03%). SOBRA CHILDREN INCREASED BY 3,341 (5.71%). ADULTS W/O CHILD AT 100% INCREASED BY 2,121 (5.90%). FOSTER CARE INCREASED BY 1,055 (12.15%). 1931 AT 36% FPL INCREASED BY 12,393 (5.02%). EMERGENCY SERVICES INCREASED BY 2,391 (2.89%). INFANTS INCREASED BY 582 (1.17%). ADULT W/O CHILD AT 140% INCREASED BY 13,852 (17.76%). MEDICAL W/SPEND DOWN DECREASED BY 4 (0.08%). SOBRA WOMAN AT 100% INCREASED BY 29 (0.91%). SOBRA CHILD AT 100% INCREASED BY 13,309 (9.01%). TRANSITIONAL MEDICAL DECREASED BY 2,550 (5.39%). 1931 AT 100% INCREASED BY 6,276 (8.91%). YATI INCREASED BY 29 (13.49%). ALL OTHER CATEGORIES INCREASED BY 2,908 (14.77%).

TANF SUMMARY

TABLES 1, 1A, 1B, & 1C: ARIZONA 1

	JANUARY 2008							CHANGE FROM			JANUARY 2007		
	FAMILIES (CASES)	PERSONS (RECIP.)	ADULTS	CHILDREN	TOTAL PAYMENTS	AVERAGE PAYMENT/ CASE	AVERAGE PAYMENT/ RECIP.	FAMILIES (CASES)	PERSONS (RECIP.)	TOTAL PAYMENTS	FAMILIES (CASES)	PERSONS (RECIP.)	TOTAL PAYMENTS
ARIZONA	37,340	81,074	19,854	61,220	9,877,707	264.53	121.84	(547)	(1,342)	(165,252)	(105)	(802)	(97,324)
DISTRICT I													
MARICOPA	20,664	45,443	10,372	35,071	5,508,048	266.55	121.21	(188)	(434)	(57,169)	377	749	75,270
DISTRICT II													
PIMA	6,978	14,630	3,759	10,871	1,829,733	262.21	125.07	(153)	(360)	(43,058)	(318)	(839)	(99,719)
DISTRICT III													
APACHE	107	231	73	158	27,138	253.63	117.48	(22)	(47)	(6,293)	(21)	(52)	(6,208)
COCONINO	261	550	137	413	63,244	242.31	114.99	(9)	(30)	(2,739)	(20)	(60)	(7,205)
NAVAJO	1,403	3,493	1,010	2,483	388,265	276.74	111.16	(1)	16	(662)	(32)	(86)	(14,107)
YAVAPAI	704	1,359	320	1,039	175,636	249.48	129.24	27	48	7,717	29	35	11,094
DISTRICT IV													
LA PAZ	240	518	161	357	60,237	250.99	116.29	(8)	(10)	(965)	(25)	(76)	(10,027)
MOHAVE	1,421	2,972	872	2,100	368,219	259.13	123.90	(8)	(20)	(3,024)	(7)	(1)	(107)
YUMA	1,152	2,515	548	1,967	302,524	262.61	120.29	(98)	(265)	(31,150)	(77)	(247)	(26,811)
DISTRICT V													
GILA	749	1,582	539	1,043	196,693	262.61	124.33	(45)	(123)	(14,222)	(22)	(160)	(16,292)
PINAL	1,944	4,349	1,142	3,207	517,386	266.15	118.97	(38)	(110)	(13,197)	63	132	15,267
DISTRICT VI													
COCHISE	1,024	2,033	547	1,486	262,029	255.89	128.89	10	23	697	(19)	(94)	(6,872)
GRAHAM	380	723	227	496	94,283	248.11	130.41	(3)	(11)	862	(45)	(129)	(16,381)
GREENLEE	52	115	31	84	14,041	270.02	122.10	0	1	592	12	34	3,685
SANTA CRUZ	261	561	116	445	70,231	269.08	125.19	(11)	(20)	(2,641)	0	(8)	1,089

1/EXCLUDES: PRIOR MONTH NET TOTALS OF 1,521 CASES; 3,744 RECIPIENTS; \$357,235.
 1/GRANT DIVERSION TOTALS OF: 103 CASES;\$108,238.
 ZERO PAY TOTALS OF 564 CASES; 1,609 RECIPIENTS.

	CURRENT MO. CASES	CURRENT MO. RECIP.	CURRENT MO. DOLLARS	PRIOR MO. CASES	PRIOR MO. RECIP.	PRIOR MO. DOLLARS
PASQUAYAOUI	287	841	\$89,224	13	47	3,082
WM APACHE	738	1,959	\$218,487	13	36	1,970
SALT RIVER	92	323	\$29,516	9	23	2,544
NAVAJO	0	0	\$0	0	0	0
HOPAI	163	460	\$38,469	3	5	293
TOTAL	1,280	3,583	\$375,696	38	111	\$7,889

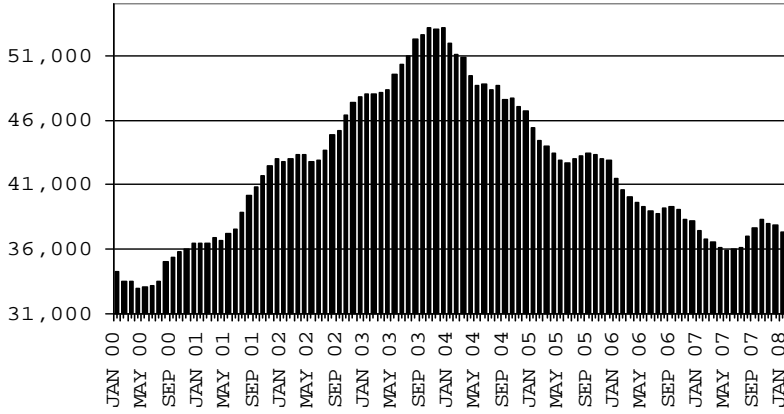
TANF SUMMARY

TABLES 1, 1A, 1B, & 1C

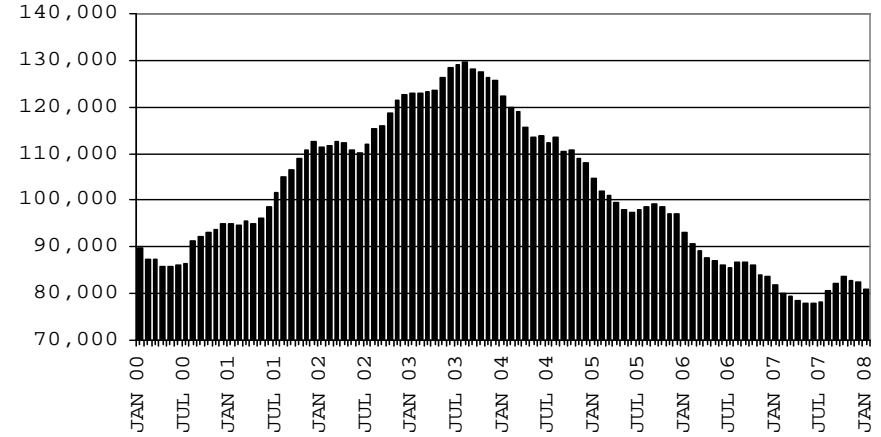
COMPARISON OF CASES, RECIPIENTS, PAYMENTS & AVERAGE PAYMENTS

FOR 2000, 2001, 2002, 2003, 2004, 2005, 2006, & 2007

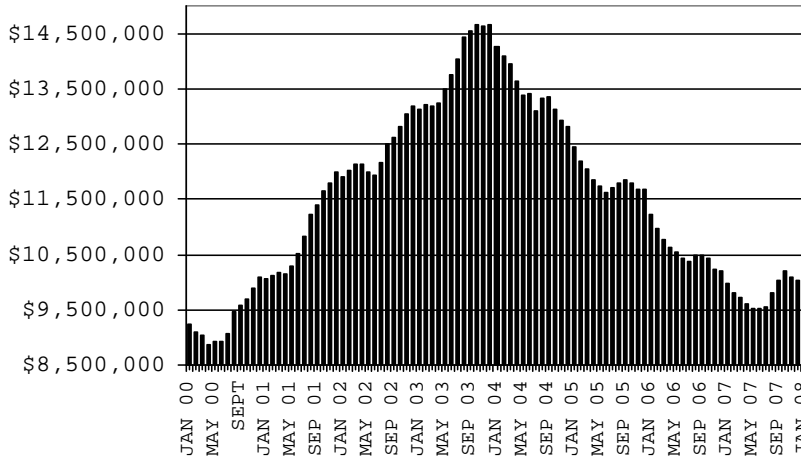
CASES



RECIPIENTS



PAYMENTS



AVERAGE PAYMENTS PER RECIPIENT

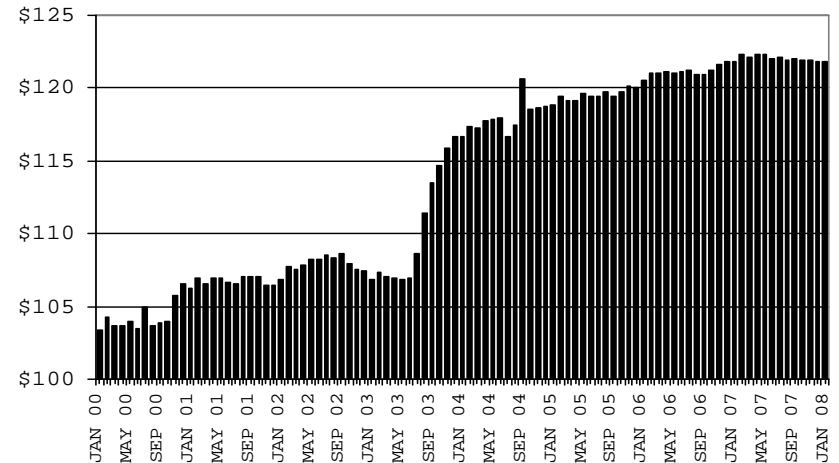


TABLE 1
CASH ASSISTANCE: ARIZONA 1.

	JANUARY 2008							CHANGE FROM					
								DECEMBER 2007			JANUARY 2007		
	FAMILIES (CASES)	(RECIP.)	ADULTS	CHILDREN	TOTAL PAYMENTS	AVERAGE PAYMENT/ CASE	AVERAGE PAYMENT/ RECIP.	FAMILIES (CASES)	PERSONS (RECIP.)	TOTAL PAYMENTS	FAMILIES (CASES)	PERSONS (RECIP.)	TOTAL PAYMENTS
ARIZONA	35,867	76,672	18,172	58,500	9,546,400	266.16	124.51	(615)	(1,547)	(180,919)	(251)	(1,437)	(165,619)
DISTRICT I													
MARICOPA	19,954	43,396	9,683	33,713	5,357,771	268.51	123.46	(238)	(601)	(72,221)	281	369	31,339
DISTRICT II													
PIMA	6,688	13,781	3,418	10,363	1,766,064	264.06	128.15	(169)	(401)	(45,524)	(338)	(929)	(110,970)
DISTRICT III													
APACHE	94	199	61	138	25,541	271.71	128.35	(26)	(56)	(6,479)	(24)	(53)	(5,871)
COCONINO	254	535	130	405	62,557	246.29	116.93	(8)	(26)	(2,428)	(16)	(44)	(5,932)
NAVAJO	1,308	3,134	846	2,288	357,454	273.28	114.06	(11)	(10)	(3,421)	(53)	(152)	(17,897)
YAVAPAI	680	1,300	296	1,004	170,839	251.23	131.41	24	33	5,759	38	47	9,932
DISTRICT IV													
LA PAZ	218	453	137	316	55,777	255.86	123.13	(13)	(28)	(2,980)	(29)	(95)	(11,055)
MOHAVE	1,353	2,758	774	1,984	351,759	259.98	127.54	(9)	(29)	(3,120)	(8)	(2)	(183)
YUMA	1,107	2,372	498	1,874	292,644	264.36	123.37	(84)	(212)	(25,991)	(72)	(247)	(26,947)
DISTRICT V													
GILA	700	1,426	459	967	182,802	261.15	128.19	(32)	(78)	(10,644)	(29)	(185)	(17,743)
PINAL	1,865	4,067	1,025	3,042	496,278	266.10	122.03	(35)	(102)	(11,309)	57	71	10,906
DISTRICT VI													
COCHISE	983	1,925	503	1,422	253,945	258.34	131.92	4	8	692	(23)	(115)	(8,834)
GRAHAM	357	669	200	469	90,083	252.33	134.65	(7)	(29)	(1,093)	(51)	(138)	(17,064)
GREENLEE	50	109	29	80	13,670	273.40	125.41	0	0	339	12	34	3,423
SANTA CRUZ	256	548	113	435	69,216	270.38	126.31	(11)	(16)	(2,499)	4	2	1,277

1/EXCLUDES: PRIOR MONTH NET TOTALS OF: 906 CASES; 2,257 RECIPIENTS; \$275,790.
GRANT DIVERSION TOTALS OF: 103 CASES; \$108,238
ZERO PAY TOTALS OF 556 CASES; 1,573 RECIPIENTS.

	CURRENT MO. CASES	CURRENT MO. RECIP.	CURRENT MO. DOLLARS	PRIOR MO. CASES	PRIOR MO. RECIP.	PRIOR MO. DOLLARS
PASQUAYUQUI	274	778	84,044	10	36	2,421
WM APACHE	679	1,714	196,795	12	33	1,838
SALT RIVER	92	323	29,516	9	23	2,544
NAVAJO	0	0	0	0	0	0
HOPAI	163	460	38,469	3	5	293
TOTAL	1,208	3,275	348,824	34	97	7,096

CASES WITH GRANT UNDER \$100 (SEE TABLE 1B).

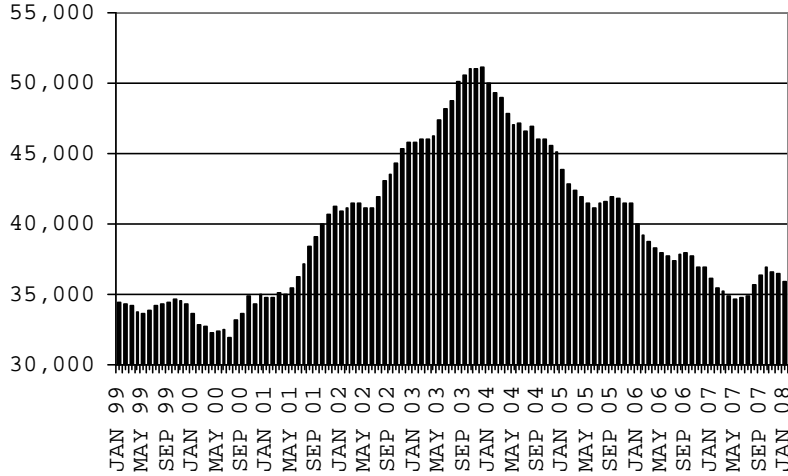
CHART 1

CASH ASSISTANCE PROGRAM

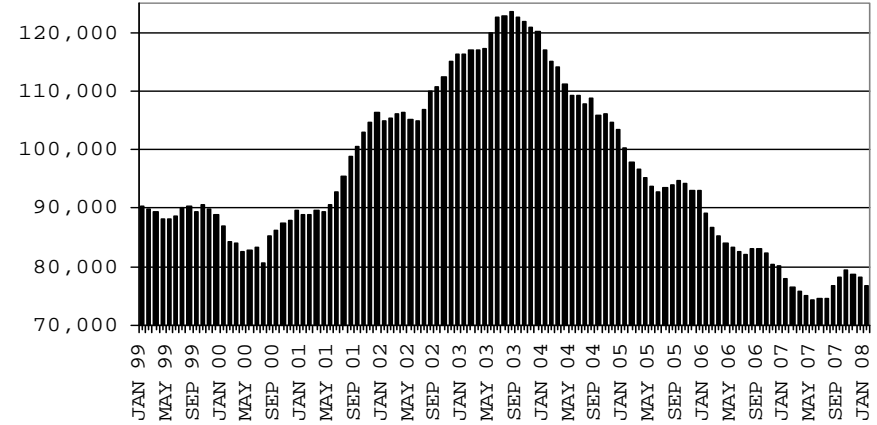
COMPARISON OF CASES, RECIPIENTS, PAYMENTS & AVERAGE PAYMENTS

FOR 1999, 2000, 2001, 2002, 2003, 2004, 2005, 2006 & 2007

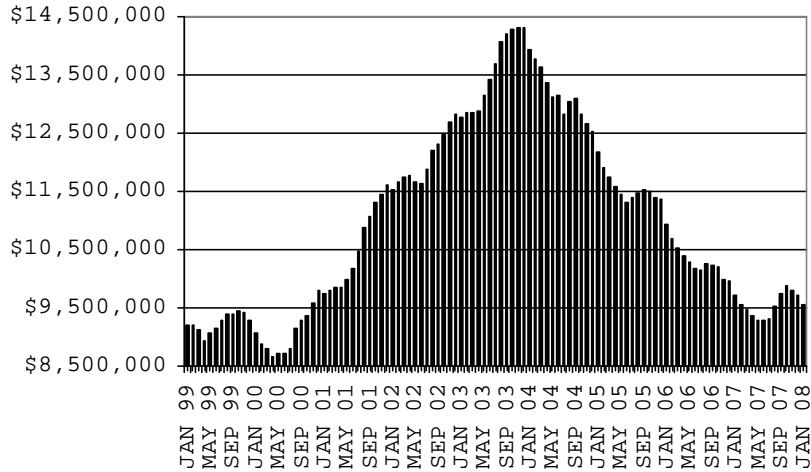
CASES



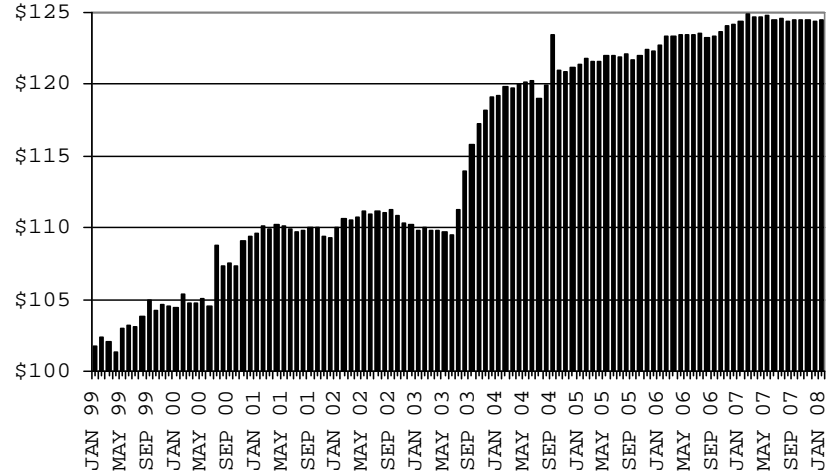
RECIPIENTS



PAYMENTS



AVERAGE PAYMENTS PER RECIPIENT



**TABLE 1A
CA-UP**

CASH ASSISTANCE UNEMPLOYED PARENT PROGRAM: ARIZONA 1

	JANUARY 2008							CHANGE FROM			DECEMBER 2007			JANUARY 2007		
	FAMILIES (CASES)	PERSONS (RECIP.)	ADULTS	CHILDREN	TOTAL PAYMENTS	AVERAGE PAYMENT/ CASE	AVERAGE PAYMENT/ RECIP.	FAMILIES (CASES)	PERSONS (RECIP.)	TOTAL PAYMENTS	FAMILIES (CASES)	PERSONS (RECIP.)	TOTAL PAYMENTS			
ARIZONA	816	3,042	1,307	1,735	284,539	348.70	93.54	62	191	17,331	254	860	75,526			
DISTRICT I																
MARICOPA	364	1,328	515	813	127,489	350.24	96.00	58	170	16,935	145	503	47,640			
DISTRICT II																
PIMA	153	570	256	314	52,976	346.25	92.94	6	23	1,792	40	130	10,893			
DISTRICT III																
APACHE	4	15	7	8	1,022	255.50	68.13	1	3	92	(1)	(5)	(694)			
COCONINO	1	3	2	1	347	347.00	115.67	(1)	(4)	(289)	(2)	(12)	(1,121)			
NAVAJO	81	331	154	177	29,896	369.09	90.32	7	24	2,713	18	60	3,835			
YAVAPAI	11	37	15	22	3,589	326.27	97.00	5	17	1,822	5	18	1,830			
DISTRICT IV																
LA PAZ	12	45	17	28	3,732	311.00	82.93	6	20	1,861	4	19	943			
MOHAVE	43	162	79	83	14,460	336.28	89.26	2	11	295	10	24	810			
YUMA	23	92	37	55	8,177	355.52	88.88	(17)	(51)	(5,226)	4	15	925			
DISTRICT V																
GILA	38	134	70	64	13,100	344.74	97.76	(11)	(41)	(3,264)	6	24	1,573			
PINAL	54	215	101	114	18,969	351.28	88.23	(1)	(6)	(1,840)	17	58	5,711			
DISTRICT VI																
COCHISE	18	63	30	33	6,107	339.28	96.94	0	0	33	6	21	2,257			
GRAHAM	11	36	21	15	3,492	317.45	97.00	6	22	2,060	1	2	410			
GREENLEE	1	3	1	2	347	347.00	115.67	1	3	347	1	3	347			
SANTA CRUZ	2	8	2	6	836	418.00	104.50	0	0	0	0	0	167			

1/EXCLUDES: PRIOR MONTH NET TOTALS OF: 81 CASES; 299 RECIPIENTS; \$44,086.
GRANT DIVERSION TOTALS OF: 0 CASES; \$0.
ZERO PAY TOTALS OF 8 CASES; 36 RECIPIENTS.

	CURRENT MO. CASES	CURRENT MO. RECIP.	CURRENT MO. DOLLARS	PRIOR MO. CASES	PRIOR MO. RECIP.	PRIOR MO. DOLLARS
PASQUA/YAQUI	13	63	5,180	3	11	661
WM APACHE	59	245	21,692	1	3	132
SALT RIVER	0	0	0	0	0	0
NAVAJO	0	0	0	0	0	0
HOPAI	0	0	0	0	0	0
TOTAL	72	308	26,872	4	14	793

CASES WITH GRANT UNDER \$100 (SEE TABLE 1C).

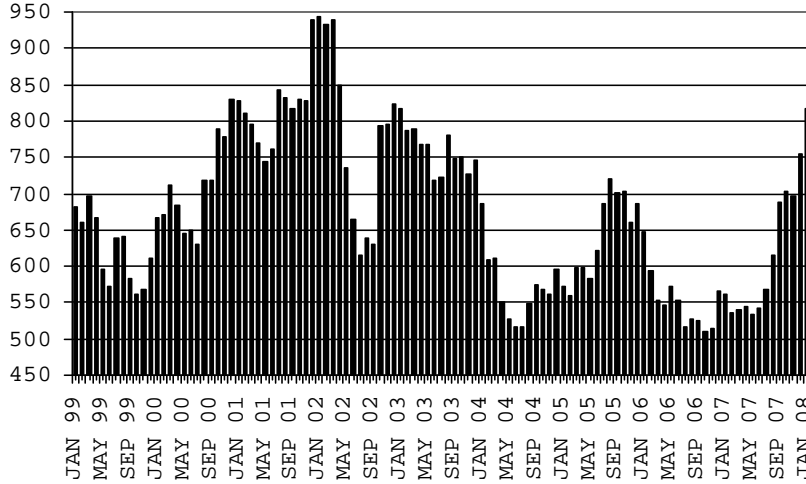
CHART 1A

CASH ASSISTANCE UNEMPLOYED PARENT PROGRAM

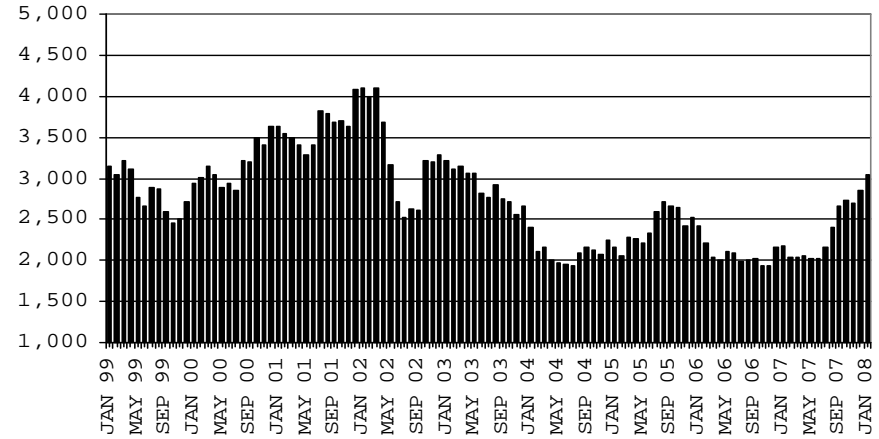
COMPARISON OF CASES, RECIPIENTS, PAYMENTS & AVERAGE PAYMENTS

FOR 1999, 2000, 2001, 2002, 2003, 2004, 2005, 2006 & 2007

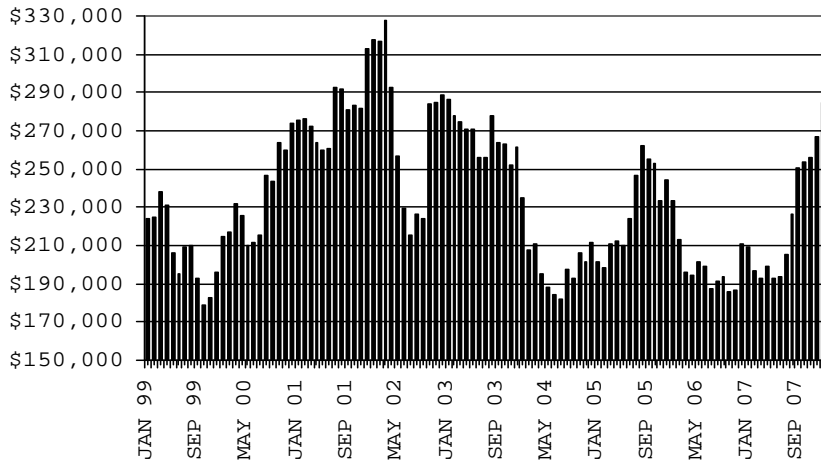
CASES



RECIPIENTS



PAYMENTS



AVERAGE PAYMENTS PER RECIPIENT

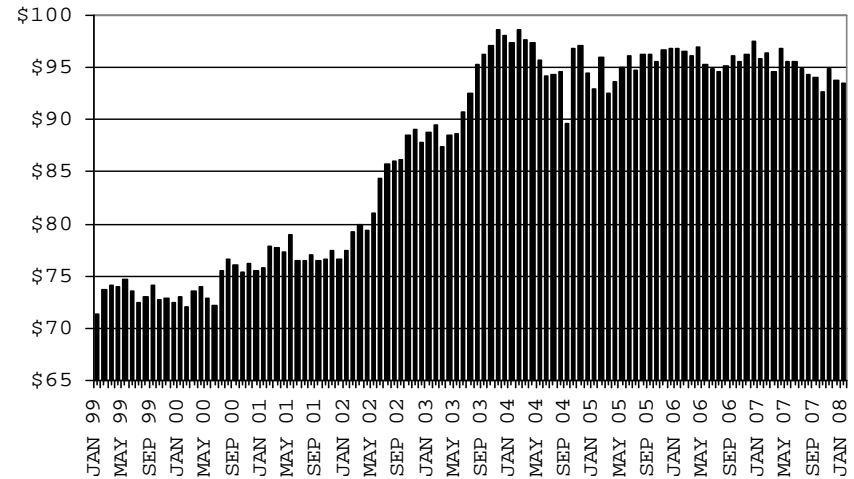


TABLE 1B 1/

CASH ASSISTANCE: ARIZONA
 CASES WITH GRANT UNDER \$100

	JANUARY 2008							CHANGE FROM					
								DECEMBER 2007			JANUARY 2007		
	FAMILIES (CASES)	PERSONS (RECIP.)	ADULTS	CHILDREN	TOTAL PAYMENTS	AVERAGE PAYMENT/ CASE	AVERAGE PAYMENT/ RECIP.	FAMILIES (CASES)	PERSONS (RECIP.)	TOTAL PAYMENTS	FAMILIES (CASES)	PERSONS (RECIP.)	TOTAL PAYMENTS
ARIZONA	648	1,339	367	972	46,343	71.52	34.61	8	26	(1,630)	(108)	(224)	(7,085)
DISTRICT I													
MARICOPA	341	708	172	536	22,551	66.13	31.85	(9)	(5)	(1,903)	(51)	(124)	(3,852)
DISTRICT II													
PIMA	136	275	83	192	10,648	78.29	38.72	12	24	732	(17)	(38)	596
DISTRICT III													
APACHE	9	17	5	12	575	63.89	33.82	3	6	94	4	6	357
COCONINO	6	12	5	7	340	56.67	28.33	0	0	(22)	(2)	(4)	(152)
NAVAJO	14	28	10	18	915	65.36	32.68	3	2	46	3	6	(45)
YAVAPAI	12	19	7	12	1,133	94.42	59.63	(3)	(5)	61	(15)	(33)	(743)
DISTRICT IV													
LA PAZ	10	20	7	13	728	72.80	36.40	1	3	186	0	0	85
MOHAVE	25	52	19	33	2,000	80.00	38.46	0	3	(105)	(9)	(23)	(734)
YUMA	21	50	13	37	1,687	80.33	33.74	3	1	64	(10)	(16)	(805)
DISTRICT V													
GILA	10	20	8	12	739	73.90	36.95	(3)	(6)	(366)	1	2	(78)
PINAL	25	67	16	51	2,139	85.56	31.93	(2)	(2)	(48)	(10)	6	(1,252)
DISTRICT VI													
COCHISE	23	45	14	31	1,977	85.96	43.93	6	15	(28)	(2)	0	(295)
GRAHAM	12	18	6	12	708	59.00	39.33	(2)	(4)	(105)	5	7	273
GREENLEE	1	3	1	2	24	24.00	8.00	(1)	(2)	(94)	(1)	(3)	(85)
SANTA CRUZ	3	5	1	4	179	59.67	35.80	0	(4)	(142)	(4)	(10)	(355)

EXCLUDES: PRIOR MONTH NET TOTALS OF 499 CASES; 1,057 RECIPIENTS; \$35,415.

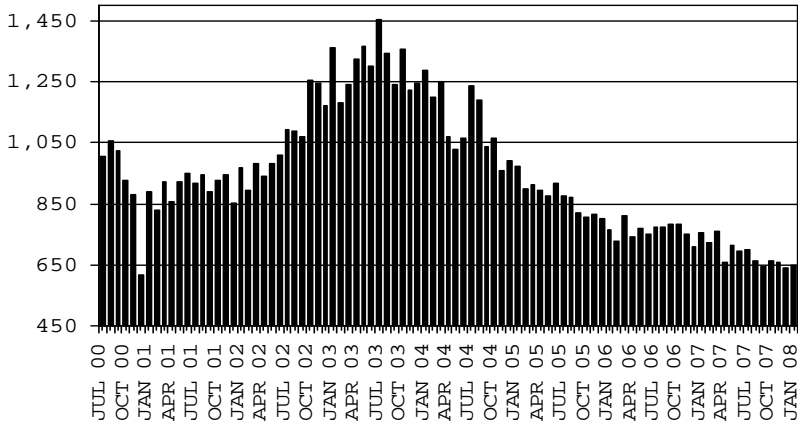
CHART 1B

CASH ASSISTANCE PROGRAM CASES WITH GRANT UNDER \$100

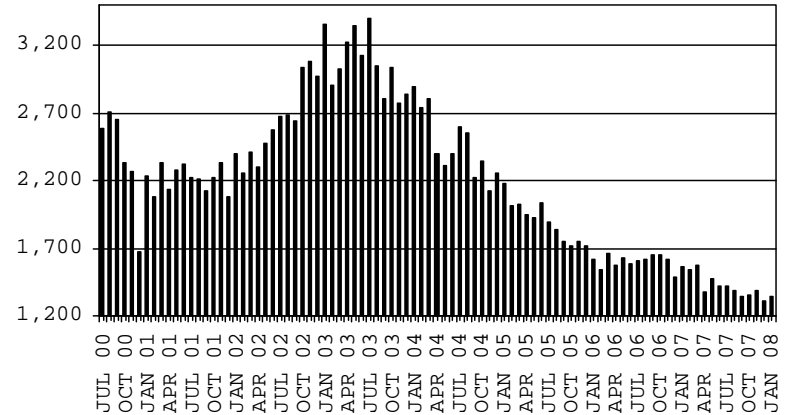
COMPARISON OF CASES, RECIPIENTS, PAYMENTS & AVERAGE PAYMENTS

FOR 2000, 2001, 2002, 2003, 2004, 2005, 2006 & 2007

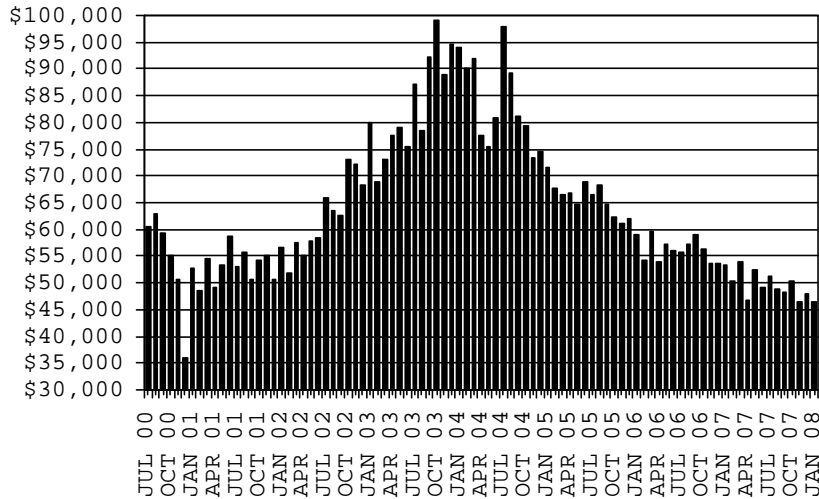
CASES



RECIPIENTS



PAYMENTS



AVERAGE PAYMENTS PER RECIPIENT

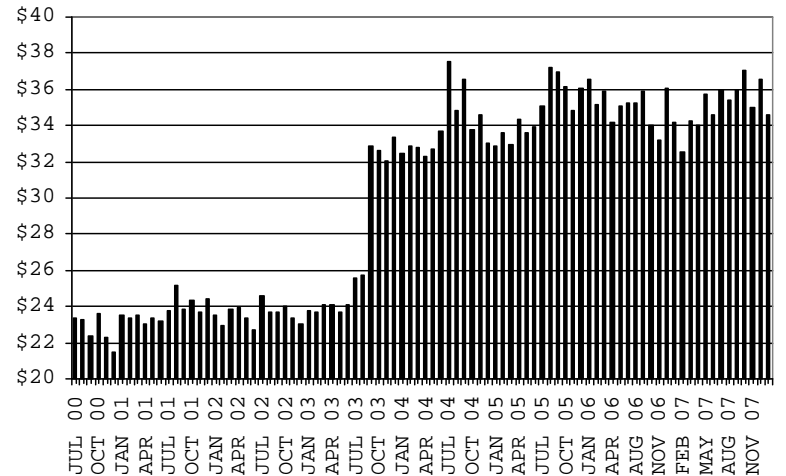


TABLE 1C 1/

CASH ASSISTANCE UNEMPLOYED PARENT PROGRAM: ARIZONA
 CASES WITH GRANT UNDER \$100

	JANUARY 2008								CHANGE FROM			JANUARY 2007		
					TOTAL	AVERAGE	AVERAGE	DECEMBER 2007			JANUARY 2007			
	FAMILIES (CASES)	PERSONS (RECIP.)	ADULTS	CHILDREN	PAYMENTS	PAYMENT/ CASE	PAYMENT/ RECIP.	FAMILIES (CASES)	PERSONS (RECIP.)	TOTAL PAYMENTS	FAMILIES (CASES)	PERSONS (RECIP.)	TOTAL PAYMENTS	
ARIZONA	9	21	8	13	425	47.22	20.24	(2)	(12)	(34)	0	(1)	(146)	
DISTRICT I														
MARICOPA	5	11	2	9	237	47.40	21.55	1	2	20	2	1	143	
DISTRICT II														
PIMA	1	4	2	2	45	45.00	11.25	(2)	(6)	(58)	(3)	(2)	(238)	
DISTRICT III														
APACHE	0	0	0	0	0	0.00	0.00	0	0	0	0	0	0	
COCONINO	0	0	0	0	0	0.00	0.00	0	0	0	0	0	0	
NAVAJO	0	0	0	0	0	0.00	0.00	0	0	0	0	0	0	
YAVAPAI	1	3	2	1	75	75.00	25.00	1	3	75	1	3	75	
DISTRICT IV														
LA PAZ	0	0	0	0	0	0.00	0.00	(2)	(5)	(32)	0	0	0	
MOHAVE	0	0	0	0	0	0.00	0.00	(1)	(5)	(94)	0	0	0	
YUMA	1	1	0	1	16	16.00	16.00	0	(3)	3	1	1	16	
DISTRICT V														
GILA	1	2	2	0	52	52.00	26.00	1	2	52	(1)	(4)	(142)	
PINAL	0	0	0	0	0	0.00	0.00	0	0	0	(1)	(3)	(98)	
DISTRICT VI														
COCHISE	0	0	0	0	0	0.00	0.00	0	0	0	0	0	0	
GRAHAM	0	0	0	0	0	0.00	0.00	0	0	0	0	0	0	
GREENLEE	0	0	0	0	0	0.00	0.00	0	0	0	0	0	0	
SANTA CRUZ	0	0	0	0	0	0.00	0.00	0	0	0	0	0	0	

EXCLUDES: PRIOR MONTH NET TOTALS OF 35 CASES; 131 RECIPIENTS; \$1,944.

CHART 1C

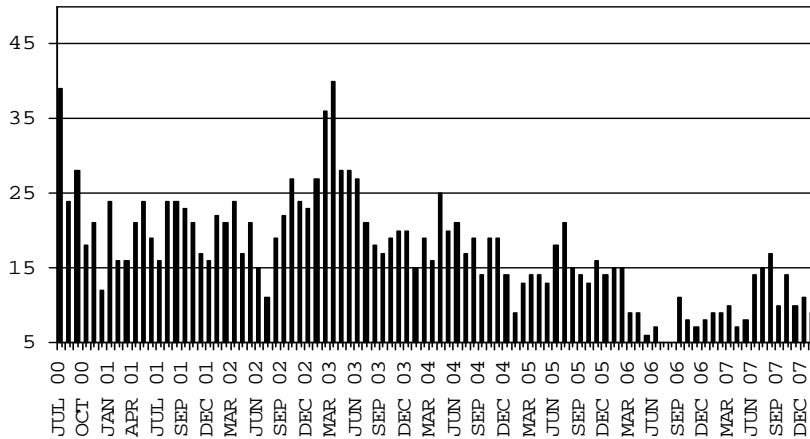
CASH ASSISTANCE UNEMPLOYED PARENT PROGRAM

CASES WITH GRANT UNDER \$100

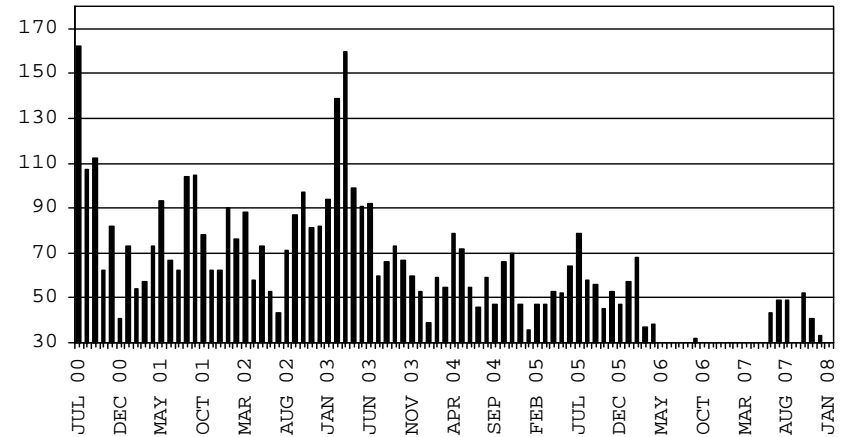
COMPARISON OF CASES, RECIPIENTS, PAYMENTS & AVERAGE PAYMENTS

FOR 2000, 2001, 2002, 2003, 2004, 2005, 2006 & 2007

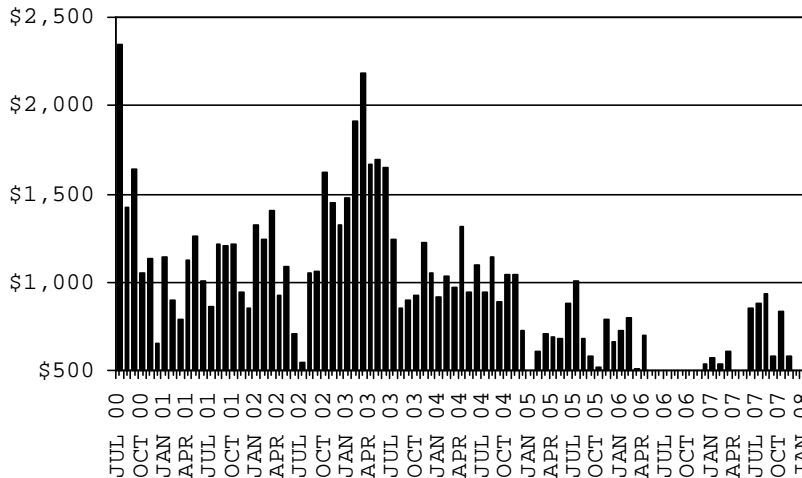
CASES



RECIPIENTS



PAYMENTS



AVERAGE PAYMENTS PER RECIPIENT

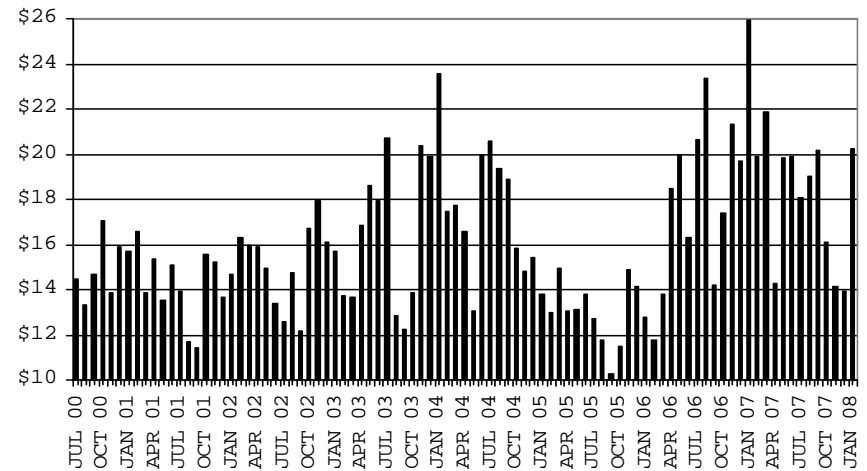


TABLE 2
GENERAL ASSISTANCE: ARIZONA 1,

	CHANGE FROM											
	JANUARY 2008					DECEMBER 2007			JANUARY 2007			
	NUMBER OF CASES	PERSONS (RECIP.)	TOTAL PAYMENTS	AVERAGE PAYMENT/ CASE	AVERAGE PAYMENT/ RECIP.	NUMBER OF CASES	PERSONS (RECIP.)	TOTAL PAYMENTS	NUMBER OF CASES	PERSONS (RECIP.)	TOTAL PAYMENTS	
ARIZONA	1,369	1,373	206,891	151.13	150.69	44	43	5,010	38	35	4,515	
DISTRICT I												
MARICOPA	564	565	85,402	151.42	151.15	7	7	313	12	13	1,997	
DISTRICT II												
PIMA	345	345	51,585	149.52	149.52	2	2	26	14	13	1,477	
DISTRICT III												
APACHE	10	11	1,614	161.40	146.73	(2)	(2)	(306)	(8)	(10)	(1,307)	
COCONINO	19	19	2,702	142.21	142.21	0	(1)	(46)	(2)	(3)	(406)	
NAVAJO	42	42	6,423	152.93	152.93	1	1	108	18	17	2,837	
YAVAPAI	61	62	9,585	157.13	154.60	9	9	1,373	(1)	0	(168)	
DISTRICT IV												
LA PAZ	13	13	1,859	143.00	143.00	3	3	454	7	7	886	
MOHAVE	79	80	11,820	149.62	147.75	8	8	1,140	(2)	(1)	(856)	
YUMA	32	32	4,570	142.81	142.81	5	5	679	(24)	(24)	(3,454)	
DISTRICT V												
GILA	30	30	4,335	144.50	144.50	2	2	152	6	6	1,216	
PINAL	103	103	15,874	154.12	154.12	2	2	164	19	18	2,670	
DISTRICT VI												
COCHISE	54	54	8,407	155.69	155.69	4	4	499	3	3	216	
GRAHAM	6	6	1,038	173.00	173.00	0	0	0	(6)	(6)	(1,038)	
GREENLEE	4	4	627	156.75	156.75	0	0	0	3	3	454	
SANTA CRUZ	7	7	1,050	150.00	150.00	3	3	454	(1)	(1)	(9)	

1/EXCLUDES: PRIOR MONTH NET TOTALS OF : 221 CASES; 221 RECIPIENTS; \$52,621.
REFUGEE RESETTLEMENT PROGRAM: 160 CASES; 225 RECIPIENTS; \$41,148.

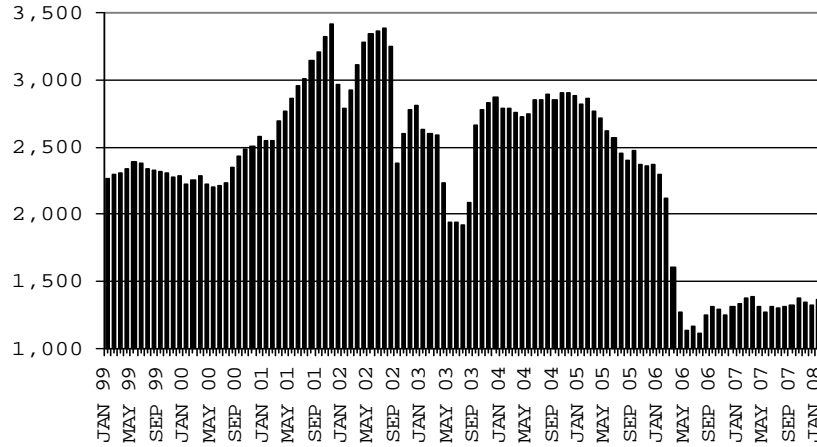
CHART 2

GENERAL ASSISTANCE PROGRAM

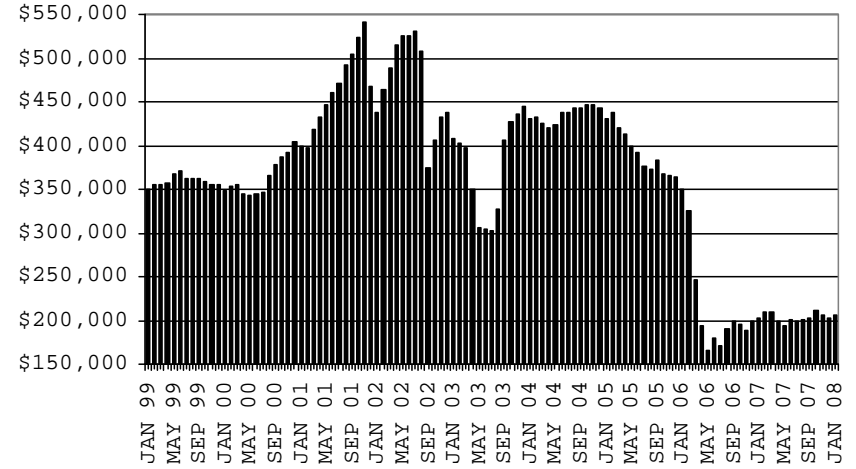
COMPARISON OF CASES, PAYMENTS & AVERAGE PAYMENTS

FOR 1999, 2000, 2001, 2002, 2003, 2004, 2005, 2006 & 2007

CASES



PAYMENTS



AVERAGE PAYMENT PER CASE

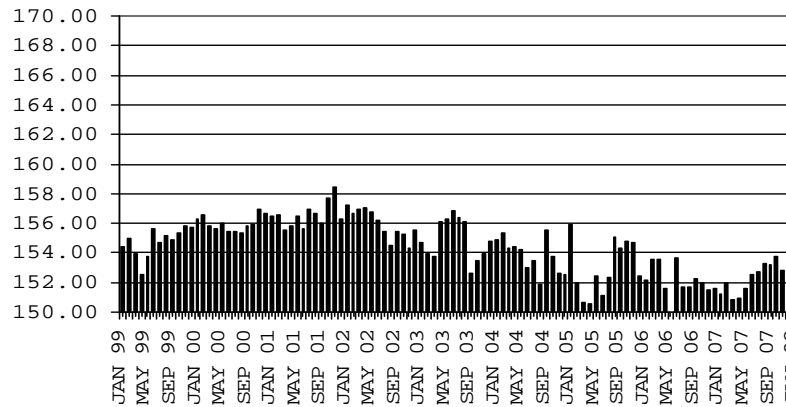


TABLE 4

TUBERCULOSIS CONTROL: ARIZONA 1/

	CHANGE FROM											
	JANUARY 2008					DECEMBER 2007			JANUARY 2007			
	NUMBER OF CASES	PERSONS (RECIP.)	TOTAL PAYMENTS	AVERAGE PAYMENT/ CASE	AVERAGE PAYMENT/ RECIP.	NUMBER OF CASES	PERSONS (RECIP.)	TOTAL PAYMENTS	NUMBER OF CASES	PERSONS (RECIP.)	TOTAL PAYMENTS	
ARIZONA	12	12	1,072	89.33	89.33	3	3	7	(2)	(2)	(439)	
DISTRICT I												
MARICOPA	11	11	964	87.64	87.64	3	3	7	(3)	(3)	(547)	
DISTRICT II												
PIMA	0	0	0	0.00	0.00	0	0	0	0	0	0	
DISTRICT III	1	1	108	108.00	108.00	0	0	0	1	1	108	
APACHE	0	0	0	0.00	0.00	0	0	0	0	0	0	
COCONINO	0	0	0	0.00	0.00	0	0	0	0	0	0	
NAVAJO	0	0	0	0.00	0.00	0	0	0	0	0	0	
YAVAPAI	1	1	108	108.00	108.00	0	0	0	1	1	108	
DISTRICT IV	0	0	0	0.00	0.00	0	0	0	0	0	0	
LA PAZ	0	0	0	0.00	0.00	0	0	0	0	0	0	
MOHAVE	0	0	0	0.00	0.00	0	0	0	0	0	0	
YUMA	0	0	0	0.00	0.00	0	0	0	0	0	0	
DISTRICT V	0	0	0	0.00	0.00	0	0	0	0	0	0	
GILA	0	0	0	0.00	0.00	0	0	0	0	0	0	
PINAL	0	0	0	0.00	0.00	0	0	0	0	0	0	
DISTRICT VI	0	0	0	0.00	0.00	0	0	0	0	0	0	
COCHISE	0	0	0	0.00	0.00	0	0	0	0	0	0	
GRAHAM	0	0	0	0.00	0.00	0	0	0	0	0	0	
GREENLEE	0	0	0	0.00	0.00	0	0	0	0	0	0	
SANTA CRUZ	0	0	0	0.00	0.00	0	0	0	0	0	0	

1/EXCLUDES: PRIOR MONTH NET TOTALS OF : 1 CASES; 1 RECIPIENTS; \$17.

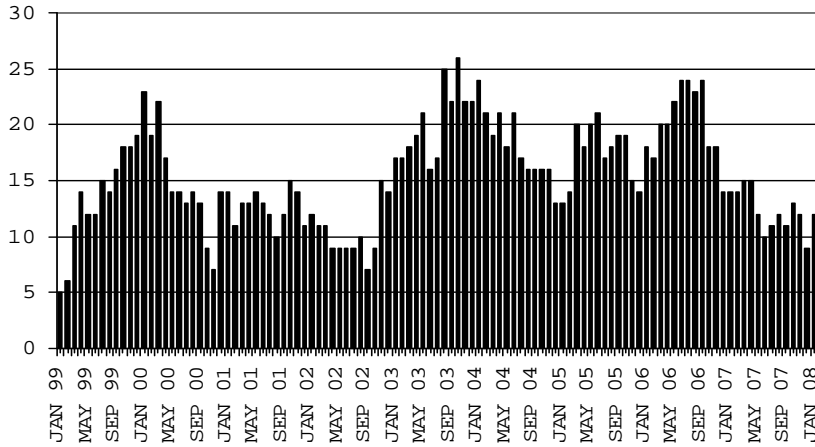
CHART 4

TUBERCULOSIS CONTROL PROGRAM

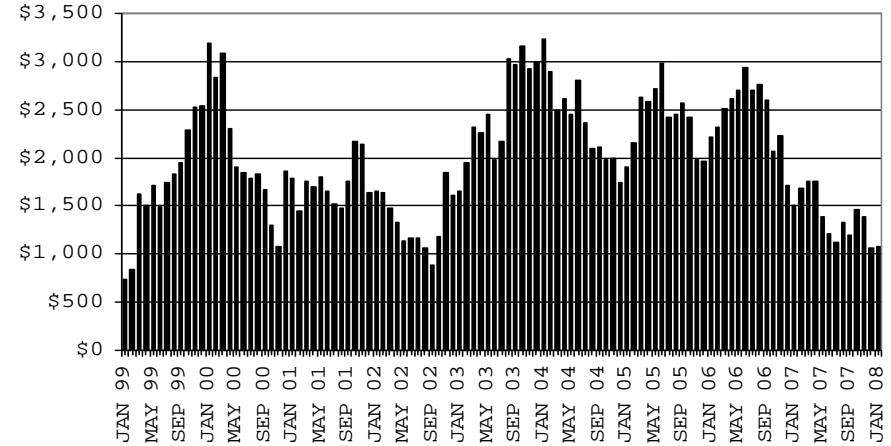
COMPARISON OF CASES, PAYMENTS & AVERAGE PAYMENTS

FOR 1999, 2000, 2001, 2002, 2003, 2004, 2005, 2006 & 2007

CASES



PAYMENTS



AVERAGE PAYMENT PER CASE

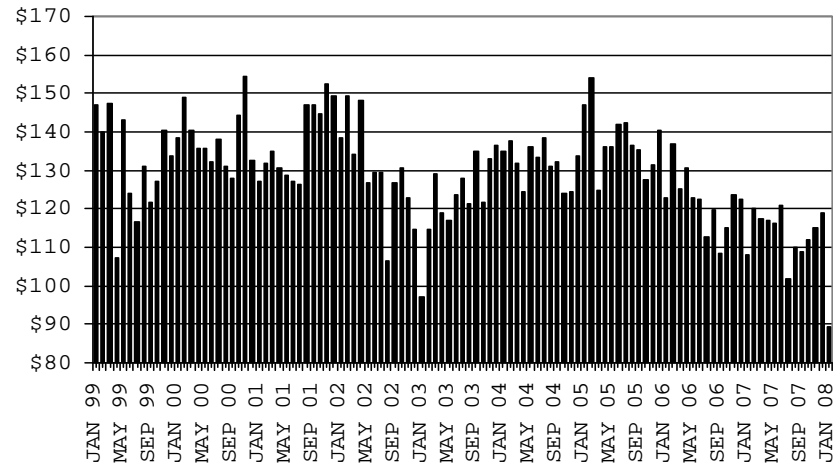


TABLE 5

**SUPPLEMENTAL PAYMENTS PROGRAM: ARIZONA 1,
 BASED ON HB 2535 SPP IS SUSPENDED FROM JULY, 2003 THROUGH JUNE, 2004
 CHANGE FROM**

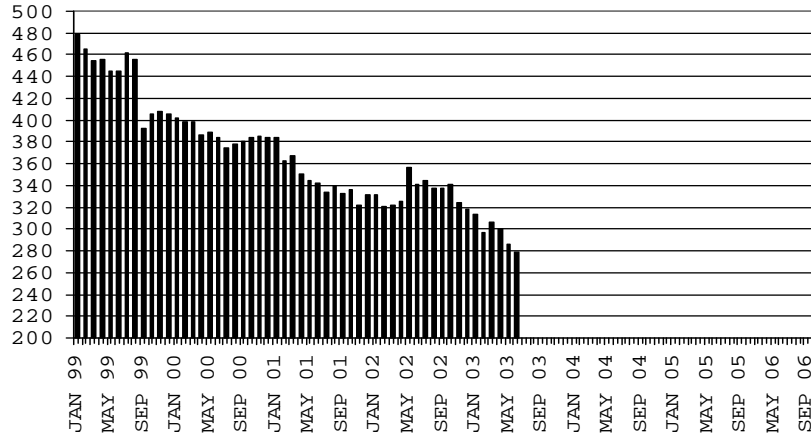
	JANUARY 2008			DECEMBER 2007		JANUARY 2007	
	NUMBER OF PAYMENTS	TOTAL PAYMENTS	AVERAGE PAYMENT	NUMBER OF PAYMENTS	TOTAL PAYMENTS	NUMBER OF PAYMENTS	TOTAL PAYMENTS
ARIZONA	0	0	0	0	0	0	0
DISTRICT I							
MARICOPA	0	0	0	0	0	0	0
DISTRICT II							
PIMA	0	0	0	0	0	0	0
DISTRICT III							
APACHE	0	0	0	0	0	0	0
COCONINO	0	0	0	0	0	0	0
NAVAJO	0	0	0	0	0	0	0
YAVAPAI	0	0	0	0	0	0	0
DISTRICT IV							
LA PAZ	0	0	0	0	0	0	0
MOHAVE	0	0	0	0	0	0	0
YUMA	0	0	0	0	0	0	0
DISTRICT V							
GILA	0	0	0	0	0	0	0
PINAL	0	0	0	0	0	0	0
DISTRICT VI							
COCHISE	0	0	0	0	0	0	0
GRAHAM	0	0	0	0	0	0	0
GREENLEE	0	0	0	0	0	0	0
SANTA CRUZ	0	0	0	0	0	0	0

1/EXCLUDES: PRIOR MONTH NET TOTALS OF : 0 CASES (PERSONS); \$0.
 1/TABLE 5 IS BASED ON THE LOCATION OF THE OFFICE THAT PROCEEDS THE APPLICATION.

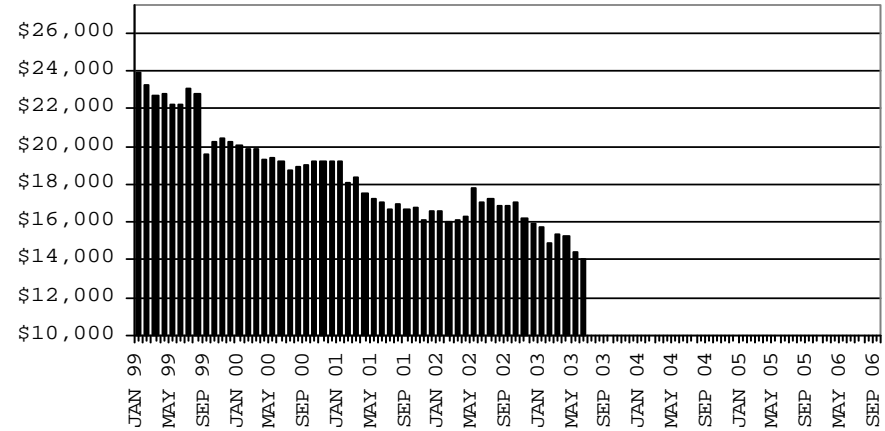
CHART 5

SUPPLEMENTAL PAYMENTS PROGRAM COMPARISON OF CASES, PAYMENTS & AVERAGE PAYMENTS FOR 1999, 2000, 2001, 2002, 2003, 2004, 2005, 2006 & 2007

CASES



PAYMENTS



AVERAGE PAYMENT PER CASE

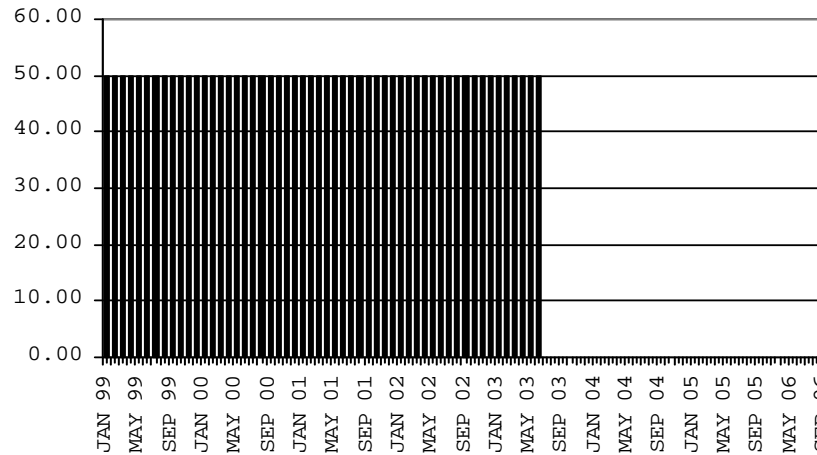


TABLE 6

FOOD STAMP PROGRAM: ARIZONA 1/

	CHANGE FROM											
	JANUARY 2008					DECEMBER 2007			JANUARY 2007			
	HOUSEHOLDS	PERSONS	TOTAL COUPON ISSUANCE	AVERAGE ALLOT./ HOUSEHOLD	AVERAGE ALLOT./ PERSON	HOUSEHOLDS	PERSONS	TOTAL COUPON ISSUANCE	HOUSEHOLDS	PERSONS	TOTAL COUPON ISSUANCE	
ARIZONA	248,027	602,007	61,062,371	246.19	101.43	2,802	4,078	59,026	30,182	67,826	8,806,344	
DISTRICT I												
MARICOPA	123,597	301,239	31,169,614	252.19	103.47	1,470	2,774	115,957	16,402	38,797	4,936,849	
DISTRICT II												
PIMA	44,189	100,795	10,246,243	231.87	101.65	592	703	50,145	5,010	10,192	1,371,127	
DISTRICT III												
APACHE	6,279	19,224	1,872,254	298.18	97.39	27	(33)	(1,699)	72	(209)	79,228	
COCONINO	5,751	16,605	1,592,956	276.99	95.93	158	352	31,224	688	1,348	201,963	
NAVAJO	9,819	27,447	2,696,493	274.62	98.24	204	626	52,897	920	2,473	363,156	
YAVAPAI	6,914	14,073	1,393,467	201.54	99.02	102	192	9,113	826	1,838	207,842	
DISTRICT IV												
LA PAZ	1,311	2,865	293,845	224.14	102.56	9	(9)	(3,206)	17	(7)	629	
MOHAVE	11,573	24,402	2,530,251	218.63	103.69	258	431	33,200	1,844	3,712	450,669	
YUMA	9,984	26,616	2,401,922	240.58	90.24	(379)	(1,352)	(238,777)	935	2,107	196,924	
DISTRICT V												
GILA	3,708	8,558	885,284	238.75	103.45	60	23	(277)	423	730	103,606	
PINAL	12,808	31,913	3,266,749	255.06	102.36	204	303	16,747	2,280	5,550	668,155	
DISTRICT VI												
COCHISE	7,115	15,731	1,536,707	215.98	97.69	98	136	6,984	588	900	129,788	
GRAHAM	2,120	5,046	491,365	231.78	97.38	19	44	8,468	40	44	32,338	
GREENLEE	238	479	50,602	212.61	105.64	3	(7)	806	(29)	(95)	(3,611)	
SANTA CRUZ	2,621	7,014	634,619	242.13	90.48	(23)	(105)	(22,556)	166	446	67,681	

1/EXCLUDES: PRIOR MONTH NET TOTALS OF : 6,895 CASES; 17,274 RECIPIENTS; \$1,086,425.
 AGED CANCELATIONS: 0 CASES; 0 RECIPIENTS; 0.
 FS COUPON CONVERSIONS: 0 CASES; 0 RECIPIENTS; \$0.
 FS REINSTATED: 0 CASES; \$0.
 FS ZERO PAY: 5,455 CASES; 21,776 RECIPIENTS.

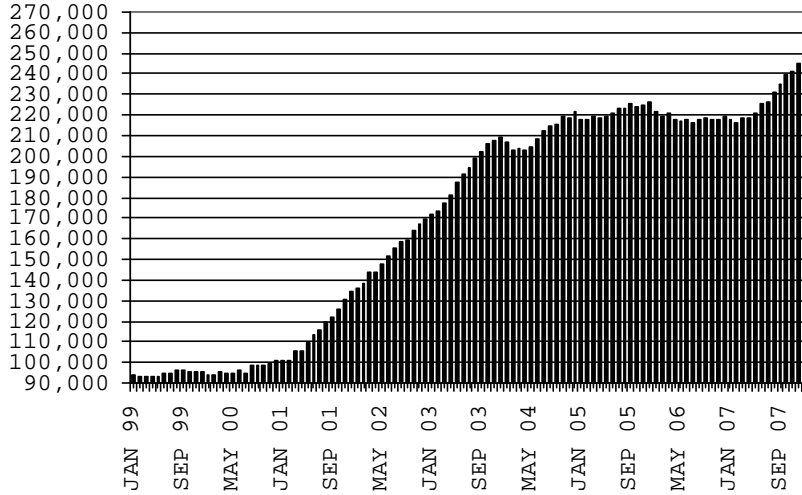
CHART 6

FOOD STAMPS PROGRAM

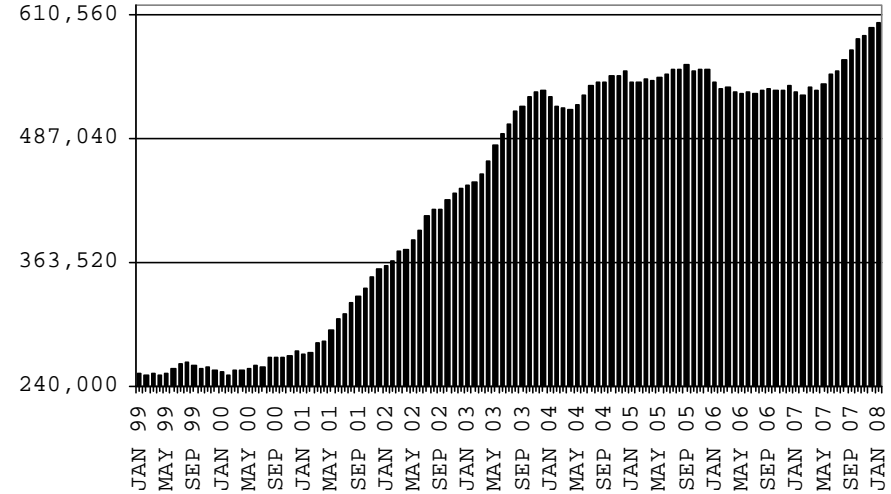
COMPARISON OF HOUSEHOLDS, RECIPIENTS, PAYMENTS & AVERAGE PAYMENTS

FOR 1999, 2000, 2001, 2002, 2003, 2004, 2005, 2006 & 2007

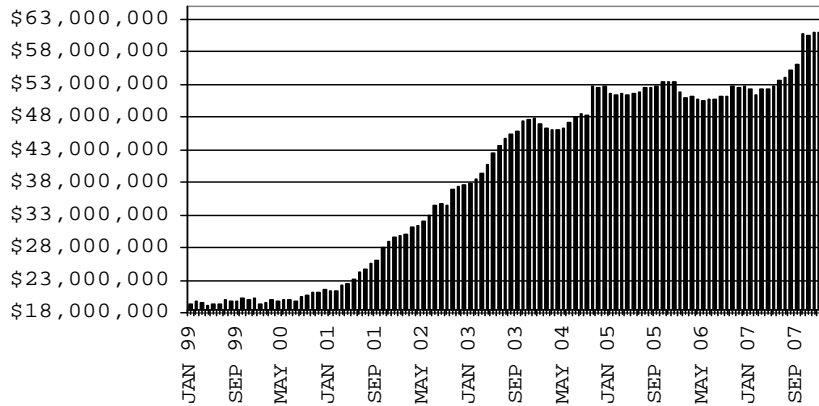
HOUSEHOLDS



RECIPIENTS



TOTAL PAYMENTS



AVERAGE PAYMENT PER HOUSEHOLD

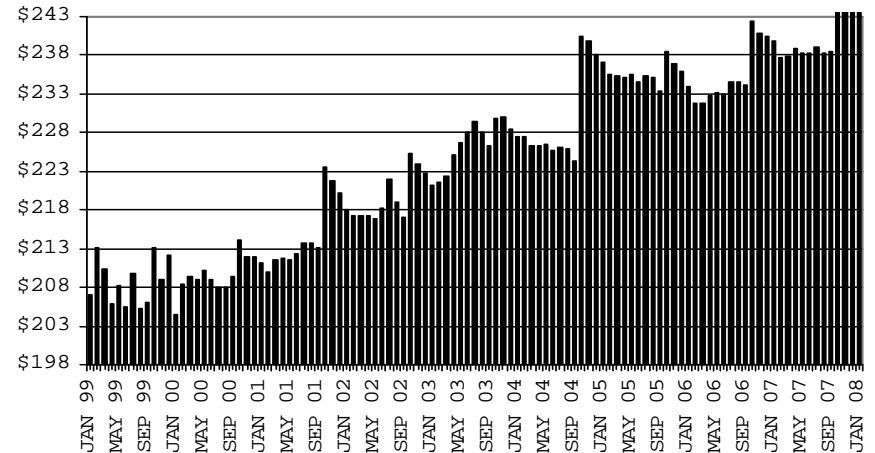


TABLE 7A
MEDICAL ASSISTANCE PROGRAM
RECIPIENTS

JANUARY 2008

	SOBRA WOMAN 133% FPL	SOBRA CHILD	ADULT W/O CHILD 100% FPL	FOSTER CARE	1931 36% FPL	FEDERAL EMERGENCY SERVICES	INFANTS	ADULT W/O CHILD 40% FPL	MEDICAL W/SPEND DOWN	SOBRA WOMAN 100% FPL	SOBRA CHILD 100% FPL	TRANSITIONAL MEDICAL T1 - T4	1931 100% FPL	YATI	OTHER	TOTAL CASES
ARIZONA	11,497	61,862	38,067	9,741	259,081	85,078	50,340	91,832	5,259	3,204	161,038	44,774	76,736	244	22,602	921,355
DISTRICT I																
MARICOPA	5,903	34,579	16,248	4,837	135,343	65,634	30,329	40,371	2,803	1,593	89,718	21,143	35,752	113	11,063	495,429
DISTRICT II																
PIMA	1,743	9,421	7,499	2,772	40,411	10,552	7,134	16,870	824	554	25,248	7,338	13,943	79	4,050	148,438
DISTRICT III																
APACHE	248	1,329	868	41	10,361	112	950	4,288	73	84	3,657	1,139	2,252	1	361	25,764
COCONINO	376	1,393	1,182	117	7,090	524	1,196	3,027	91	94	3,710	1,130	2,132	10	343	22,415
NAVAJO	368	2,079	1,294	115	11,244	342	1,400	4,777	161	121	4,387	1,423	2,718	2	566	30,997
YAVAPAI	443	1,772	1,674	433	5,462	1,560	1,364	2,881	208	100	4,041	1,332	2,410	12	949	24,641
DISTRICT IV																
LA PAZ	39	234	217	20	1,165	197	182	574	38	13	587	218	322	0	151	3,957
MOHAVE	515	2,063	2,005	225	9,439	924	1,534	4,771	319	145	6,402	1,958	3,695	2	1,217	35,214
YUMA	588	2,511	2,190	246	9,726	2,055	1,863	3,146	193	167	7,800	4,010	4,579	1	1,191	40,266
DISTRICT V																
GILA	132	736	553	73	4,051	136	471	2,006	99	32	1,484	531	923	2	288	11,517
PINAL	622	3,658	1,870	507	13,706	1,720	2,191	5,082	237	153	6,776	2,089	3,627	14	1,140	43,392
DISTRICT VI																
COCHISE	262	1,050	1,320	251	6,216	704	860	2,373	127	70	3,542	1,159	2,223	5	745	20,907
GRAHAM	132	434	401	60	2,031	79	368	861	19	32	1,102	516	625	3	125	6,788
GREENLEE	28	40	36	10	278	5	61	99	4	0	113	63	62	0	18	817
SANTA CRUZ	98	563	710	34	2,558	534	437	706	63	46	2,471	725	1,473	0	395	10,813

TABLE 7B

MEDICAL ASSISTANCE PROGRAM

RECIPIENTS

CHANGE FROM

DECEMBER 2007

	SOBRA WOMAN 133% FPL	SOBRA CHILD	ADULT W/O CHILD 100% FPL	FOSTER CARE	1931 36% FPL	FEDERAL EMERGENCY SERVICES	INFANTS	ADULT W/O CHILD 40% FPL	MEDICAL W/SPEND DOWN	SOBRA WOMAN 100% FPL	SOBRA CHILD 100% FPL	TRANSITIONAL MEDICAL T1 - T4	1931 100% FPL	YATI	OTHER	TOTAL CASES
ARIZONA	109	(201)	125	37	(837)	(273)	(174)	1,669	0	(74)	217	1,282	14	9	138	2,041
DISTRICT I																
MARICOPA	72	(16)	90	29	(30)	(9)	(65)	911	(21)	(62)	609	77	52	3	196	1,836
DISTRICT II																
PIMA	(2)	(18)	14	3	58	(166)	24	340	23	(11)	(248)	166	21	4	(8)	200
DISTRICT III																
APACHE	4	(23)	15	2	27	11	1	36	(3)	(4)	(38)	9	(9)	1	5	34
COCONINO	0	0	28	(7)	173	(5)	(11)	117	1	(6)	83	(109)	47	(2)	2	311
NAVAJO	(8)	(46)	(42)	(1)	203	17	(14)	36	1	(2)	(30)	(81)	11	0	15	59
YAVAPAI	(9)	(11)	(3)	1	(14)	(18)	(33)	47	(16)	7	(14)	17	(8)	1	(22)	(75)
DISTRICT IV																
LA PAZ	2	(5)	3	5	(25)	11	8	8	3	(2)	24	(11)	18	0	(1)	38
MOHAVE	31	(61)	43	(4)	82	(34)	6	90	4	(11)	(7)	9	92	0	17	257
YUMA	12	(42)	(84)	3	(1,275)	(75)	(60)	(101)	4	15	(45)	1,203	(256)	0	3	(698)
DISTRICT V																
GILA	(5)	(3)	34	0	1	7	5	38	(1)	1	(5)	24	(11)	0	17	102
PINAL	17	29	28	6	(113)	(8)	(44)	64	5	(7)	(92)	(47)	80	3	(28)	(107)
DISTRICT VI																
COCHISE	3	(6)	2	0	108	22	20	49	5	2	(4)	(19)	5	(2)	(12)	173
GRAHAM	(1)	10	5	2	19	0	2	23	(1)	8	(9)	(33)	(26)	1	0	0
GREENLEE	(3)	(4)	(1)	(2)	(18)	(1)	0	4	(2)	(1)	8	8	(2)	0	(6)	(20)
SANTA CRUZ	(4)	(5)	(7)	0	(33)	(25)	(13)	7	(2)	(1)	(15)	69	0	0	(40)	(69)

TABLE 7C
MEDICAL ASSISTANCE PROGRAM
RECIPIENTS

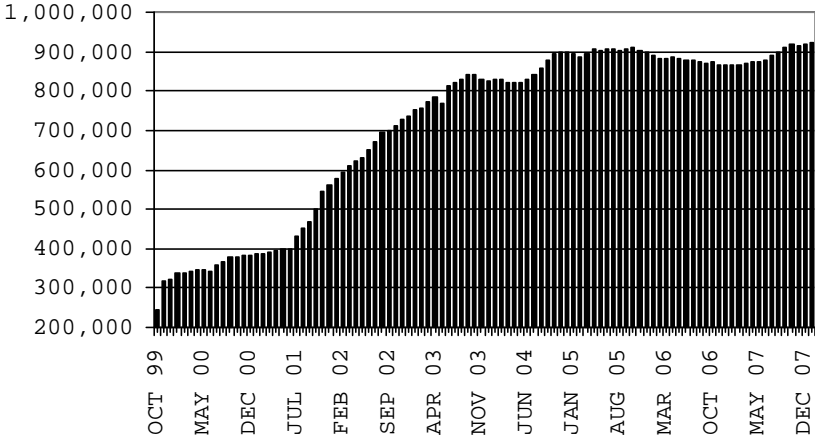
CHANGE FROM
JANUARY 2007

	SOBRA WOMAN 133% FPL	SOBRA CHILD	ADULT W/O CHILD 100% FPL	FOSTER CARE	1931 36% FPL	FEDERAL EMERGENCY SERVICES	INFANTS	ADULT W/O CHILD 40% FPL	MEDICAL W/SPEND DOWN	SOBRA WOMAN 100% FPL	SOBRA CHILD 100% FPL	TRANSITIONAL MEDICAL T1 - T4	3E 1931 100% FPL	YATI	OTHER	TOTAL CASES
ARIZONA	654	3,341	2,121	1,055	12,393	2,391	582	13,852	(4)	29	13,309	(2,550)	6,276	29	2,908	56,386
DISTRICT I																
MARICOPA	406	2,658	1,183	461	9,753	2,663	290	7,156	(148)	15	9,246	(1,681)	3,635	3	1,362	37,002
DISTRICT II																
PIMA	87	239	322	330	1,484	79	129	2,722	162	25	1,367	(270)	1,037	16	526	8,255
DISTRICT III																
APACHE	(13)	(135)	(29)	11	(392)	7	(51)	204	11	(10)	(89)	(83)	(40)	1	41	(567)
COCONINO	(20)	55	25	8	(32)	21	58	336	(22)	(12)	64	(108)	(7)	2	16	384
NAVAJO	31	(57)	(45)	4	239	16	84	476	(5)	(1)	127	(206)	17	(2)	85	763
YAVAPAI	15	17	33	76	285	(21)	5	454	(44)	10	314	(302)	248	1	123	1,214
DISTRICT IV																
LA PAZ	(4)	22	(13)	4	(125)	(9)	2	26	7	(6)	(5)	77	(21)	0	33	(12)
MOHAVE	40	1	254	9	641	(72)	(71)	822	13	(1)	815	268	392	0	207	3,318
YUMA	71	170	145	18	(419)	(195)	(96)	195	(2)	(1)	492	318	287	(2)	222	1,203
DISTRICT V																
GILA	(2)	(52)	29	(10)	101	(27)	9	235	27	8	(4)	(20)	28	(2)	26	346
PINAL	5	451	221	138	778	(14)	152	877	(10)	2	847	(237)	481	9	108	3,808
DISTRICT VI																
COCHISE	21	(56)	48	6	112	(23)	(3)	209	22	(3)	42	(110)	173	2	94	534
GRAHAM	6	6	(14)	(3)	(57)	11	25	82	(21)	9	23	(167)	(11)	1	16	(94)
GREENLEE	8	1	(14)	0	(29)	(3)	7	(28)	(5)	(5)	(8)	(14)	(9)	0	(5)	(104)
SANTA CRUZ	3	21	(24)	3	54	(42)	42	86	11	(1)	78	(15)	66	0	54	336

CHART 7

MEDICAL ASSISTANCE PROGRAM COMPARISON OF RECIPIENTS FOR 1999, 2000, 2001, 2002, 2003, 2004, 2005, 2006 & 2007

TOTAL RECIPIENTS



NEW SERIES WHICH INCLUDES 1931