



**State of Arizona**

**Department of Economic Security**

**Family Assistance Administration**

**Statistical Bulletin**

**March, 2008**

**Phone: (602) 542-3678**

**<http://www.azdes.gov/faa/Statistics.asp>**

\*\*\*\* STATISTICAL BULLETIN \*\*\*\*  
ARIZONA DEPARTMENT OF ECONOMIC SECURITY  
FAMILY ASSISTANCE ADMINISTRATION  
BOX 6123, PHOENIX, ARIZONA 85005  
PHONE (602) 542-3678

MARCH 2008

THIS ISSUE OF THE STATISTICAL BULLETIN COMPARES MARCH 2008 DATA FOR EACH OF THE INDICATED PROGRAMS WITH THE INFORMATION FOR FEBRUARY 2008 AND MARCH 2007. STATEWIDE SUMMARIES OF ACTIVITY WITHIN EACH OF THE SPECIFIC PROGRAMS FOR THIS REPORT PERIOD ARE DISCUSSED BELOW. THE TABLES COMPARE CURRENT AND PRIOR MONTH DATA. DISTRICT AND COUNTY COMPARISONS ARE PROVIDED WITHIN THIS BULLETIN

CASH ASSISTANCE (CA)

COMPARING TO FEBRUARY 2008, MARCH 2008 CASES DECREASED BY 340 (0.96%) TO 35,043. RECIPIENTS DECREASED BY 1,030 (1.37%) TO 74,279. PAYMENTS DECREASED BY \$104,449 (1.11%) TO \$9,298,070. AVERAGE PAYMENT PER CASE DECREASED BY \$0.41 (0.15%) TO \$265.33. PAYMENT PER RECIPIENT INCREASED BY \$0.33 (0.26%) TO \$125.18.

COMPARING TO MARCH 2007, MARCH 2008 CASES DECREASED BY 220 (0.62%). RECIPIENTS DECREASED BY 1,595 (2.10%). TOTAL PAYMENTS DECREASED BY \$166,531 (1.76%). THE AVERAGE PAYMENT PER CASE DECREASED BY \$3.07 (1.14%). THE AVERAGE PAYMENT PER RECIPIENT INCREASED BY \$0.44 (0.36%).

CASH ASSISTANCE UNEMPLOYED PARENT PROGRAM (CA-UP)

COMPARING TO FEBRUARY 2008, MARCH 2008 CASES INCREASED BY 3 (0.39%) TO 780. RECIPIENTS DECREASED BY 51 (1.77%) TO 2,829. PAYMENTS DECREASED BY \$4,467 (1.63%) TO \$268,847. AVERAGE PAYMENT PER CASE DECREASED BY \$7.08 (2.01%) TO \$344.68. PAYMENT PER RECIPIENT INCREASED BY \$0.13 (0.14%) TO \$95.03.

COMPARING TO MARCH 2007, MARCH 2008 CASES INCREASED BY 240 (44.44%). RECIPIENTS INCREASED BY 788 (38.61%). TOTAL PAYMENTS INCREASED BY \$75,808 (39.27%). THE AVERAGE PAYMENT PER CASE DECREASED BY \$12.80 (3.58%). THE AVERAGE PAYMENT PER RECIPIENT INCREASED BY \$0.45 (0.48%).

CASH ASSISTANCE WITH GRANT UNDER \$100 (CA-MOE)

COMPARING TO FEBRUARY 2008, MARCH 2008 CASES INCREASED BY 50 (8.26%) TO 655. RECIPIENTS INCREASED BY 71 (5.79%) TO 1,297. PAYMENTS INCREASED BY \$1,671 (3.64%) TO \$47,553. AVERAGE PAYMENT PER CASE DECREASED BY \$3.24 (4.27%) TO \$72.60. AVERAGE PAYMENT PER RECIPIENT DECREASED BY \$0.76 (2.03%) TO \$36.66.

COMPARING TO MARCH 2007, MARCH 2008 CASES DECREASED BY 105 (13.82%). RECIPIENTS DECREASED BY 278 (17.65%). TOTAL PAYMENTS DECREASED BY \$6,434 (11.92%). THE AVERAGE PAYMENT PER CASE INCREASED BY \$1.56 (2.20%). THE AVERAGE PAYMENT PER RECIPIENT INCREASED BY \$2.38 (6.94%).

CASH ASSISTANCE UNEMPLOYED PARENT PROGRAM WITH GRANT UNDER \$100 (CA-UP-MOE) NEW PROGRAM STARTING 7/01

COMPARING TO FEBRUARY 2008, MARCH 2008 CASES DECREASED BY 2 (16.67%) TO 10. RECIPIENTS DECREASED BY 10 (28.57%) TO 25. PAYMENTS DECREASED BY \$169 (24.42%) TO \$523. AVERAGE PAYMENT PER CASE DECREASED BY \$5.37 (9.31%) TO \$52.30. PAYMENT PER RECIPIENT INCREASED BY \$1.15 (5.82%) TO \$20.92.

COMPARING TO MARCH 2007, MARCH 2008 CASES INCREASED BY 0 (0.00%). RECIPIENTS DECREASED BY 3 (0.43%). TOTAL PAYMENTS DECREASED BY \$90 (14.68%). THE AVERAGE PAYMENT PER CASE DECREASED BY \$9.00 (14.68%). THE AVERAGE PAYMENT PER RECIPIENT DECREASED BY \$0.97 (4.43%).

GENERAL ASSISTANCE (GA)

COMPARING TO FEBRUARY 2008, MARCH 2008 CASES INCREASED BY 27 (1.96%) TO 1,407. RECIPIENTS INCREASED BY 28 (2.02%) TO 1,411. PAYMENTS INCREASED BY \$3,829 (1.83%) TO \$212,888. AVERAGE PAYMENT PER CASE DECREASED BY \$0.18 (0.12%) TO \$151.31. AVERAGE PAYMENT PER RECIPIENT DECREASED BY \$0.28 (0.19%) TO \$150.88.

COMPARING TO MARCH 2007, MARCH 2008 CASES INCREASED BY 22 (1.59%). RECIPIENTS INCREASED BY 18 (1.29%). TOTAL PAYMENTS INCREASED BY \$3,939 (1.89%). THE AVERAGE PAYMENT PER CASE INCREASED BY \$0.44 (0.29%). THE AVERAGE PAYMENT PER RECIPIENT INCREASED BY \$0.88 (0.59%).

TUBERCULOSIS CONTROL PROGRAM (TC)

COMPARING TO FEBRUARY 2008, MARCH 2008 CASES INCREASED BY 0 (0.00%) TO 13. RECIPIENTS INCREASED BY 0 (0.00%) TO 13. PAYMENTS INCREASED BY \$15 (1.01%) TO \$1,504. AVERAGE PAYMENT PER CASE INCREASED BY \$1.15 (1.01%) TO \$115.69. AVERAGE PAYMENT PER RECIPIENT INCREASED BY \$1.15 (1.01%) TO \$115.69.

COMPARING TO MARCH 2007, MARCH 2008 CASES DECREASED BY 2 (13.33%). RECIPIENTS DECREASED BY 2 (13.33%). TOTAL PAYMENTS DECREASED BY \$258 (14.64%). THE AVERAGE PAYMENT PER CASE DECREASED BY \$1.78 (1.51%). THE AVERAGE PAYMENT PER RECIPIENT DECREASED BY \$1.78 (1.51%).

FOOD STAMP PROGRAM (FS)

COMPARING TO FEBRUARY 2008, MARCH 2008 FOOD STAMP HOUSEHOLDS INCREASED BY 5,587 (2.24%) TO 255,212. PERSONS RECEIVING FOOD STAMPS INCREASED BY 11,884 (1.96%) TO 618,447. TOTAL COUPON ISSUANCE INCREASED BY \$1,275,163 (2.09%) TO \$62,269,676. THE AVERAGE HOUSEHOLD ALLOTMENT DECREASED BY \$0.35 (0.15%) TO \$243.99. THE AVERAGE ALLOTMENT PER PERSON INCREASED BY \$0.13 (0.13%) TO \$100.69.

COMPARING TO MARCH 2007, MARCH 2008 FOOD STAMP HOUSEHOLDS INCREASED BY 35,019 (15.90%). PERSONS RECEIVING FOOD STAMPS INCREASED BY 80,983 (15.07%). TOTAL COUPON ISSUANCE INCREASED BY \$9,887,873 (18.88%). THE AVERAGE ALLOTMENT PER HOUSEHOLD INCREASED BY \$6.10 (2.56%). THE AVERAGE ALLOTMENT PER PERSON INCREASED BY \$3.23 (3.31%).

MEDICAL ASSISTANCE PROGRAM (MA) NEW TABLE INCLUDES PROP. 204 CATEGORIES

COMPARING TO FEBRUARY 2008, MARCH 2008 TOTAL RECIPIENTS TOTAL RECIPIENTS INCREASED BY 14,751 (1.60%). SOBRA WOMEN AT 140% FPL INCREASED BY 341 (2.96%). SOBRA CHILDREN INCREASED BY 824 (1.33%). ADULTS W/O CHILD AT 100% INCREASED BY 946 (2.47%). FOSTER CARE INCREASED BY 79 (0.81%). 1931 AT 36% FPL INCREASED BY 4,909 (1.89%). EMERGENCY SERVICES INCREASED BY 905 (1.07%). INFANTS INCREASED BY 381 (0.76%). ADULT W/O CHILD AT 140% INCREASED BY 2,624 (2.81%). MEDICAL W/SPEND DOWN INCREASED BY 293 (5.77%). SOBRA WOMAN AT 100% INCREASED BY 135 (4.12%). SOBRA CHILD AT 100% INCREASED BY 2,379 (1.47%). TRANSITIONAL MEDICAL DECREASED BY 752 (1.71%). 1931 AT 100% INCREASED BY 1,482 (1.92%). YATI INCREASED BY 12 (5.22%). ALL OTHER CATEGORIES INCREASED BY 193 (0.85%).

COMPARING TO MARCH 2007, MARCH 2008 TOTAL RECIPIENTS TOTAL RECIPIENTS INCREASED BY 68,730 (7.90%). SOBRA WOMEN AT 140% FPL INCREASED BY 730 (6.55%). SOBRA CHILDREN INCREASED BY 3,663 (6.18%). ADULTS W/O CHILD AT 100% INCREASED BY 2,989 (8.23%). FOSTER CARE INCREASED BY 1,152 (13.21%). 1931 AT 36% FPL INCREASED BY 17,764 (7.19%). EMERGENCY SERVICES INCREASED BY 1,808 (2.15%). INFANTS INCREASED BY 715 (1.44%). ADULT W/O CHILD AT 140% INCREASED BY 16,964 (21.43%). MEDICAL W/SPEND DOWN INCREASED BY 66 (1.24%). SOBRA WOMAN AT 100% INCREASED BY 181 (5.60%). SOBRA CHILD AT 100% INCREASED BY 14,788 (9.91%). TRANSITIONAL MEDICAL DECREASED BY 2,579 (5.63%). 1931 AT 100% INCREASED BY 7,510 (10.56%). YATI INCREASED BY 20 (9.01%). ALL OTHER CATEGORIES INCREASED BY 2,959 (14.76%).

# TANF SUMMARY

## TABLES 1, 1A, 1B, & 1C: ARIZONA 1

	MARCH 2008							CHANGE FROM			FEBRUARY 2008			MARCH 2007		
	FAMILIES	PERSONS	ADULTS	CHILDREN	TOTAL	AVERAGE	AVERAGE	FAMILIES	PERSONS	TOTAL	FAMILIES	PERSONS	TOTAL			
	(CASES)	(RECIP.)						PAYMENTS	PAYMENT/	PAYMENT/	(CASES)	(RECIP.)	PAYMENTS	(CASES)	(RECIP.)	PAYMENTS
					CASE	RECIP.										
ARIZONA	36,488	78,430	18,915	59,515	9,614,993	263.51	122.59	(289)	(1,020)	(107,414)	(85)	(1,088)	(97,247)			
DISTRICT I																
MARICOPA	20,393	44,511	10,014	34,497	5,423,414	265.94	121.84	(77)	(356)	(38,956)	456	799	98,779			
DISTRICT II																
PIMA	6,881	14,197	3,631	10,566	1,785,379	259.47	125.76	(16)	(92)	(13,653)	(186)	(645)	(70,216)			
DISTRICT III																
APACHE	108	216	69	147	27,318	252.94	126.47	(6)	(25)	(891)	(12)	(50)	(3,067)			
COCONINO	237	486	117	369	57,960	244.56	119.26	(9)	(20)	(1,916)	(32)	(79)	(9,754)			
NAVAJO	1,302	3,194	925	2,269	360,946	277.22	113.01	(23)	(52)	(2,963)	(77)	(222)	(26,634)			
YAVAPAI	684	1,321	288	1,033	169,377	247.63	128.22	(20)	(60)	(6,362)	19	9	3,941			
DISTRICT IV																
LA PAZ	235	531	163	368	60,271	256.47	113.50	(5)	2	(794)	(10)	(19)	(5,032)			
MOHAVE	1,383	2,858	832	2,026	358,315	259.09	125.37	(15)	(59)	(5,236)	(4)	(32)	2,539			
YUMA	1,051	2,235	456	1,779	273,129	259.88	122.21	(43)	(103)	(9,683)	(72)	(241)	(28,037)			
DISTRICT V																
GILA	676	1,394	471	923	176,764	261.49	126.80	(26)	(87)	(9,050)	(79)	(270)	(26,051)			
PINAL	1,900	4,237	1,099	3,138	503,475	264.99	118.83	(2)	(52)	(3,660)	7	(25)	(749)			
DISTRICT VI																
COCHISE	979	1,941	512	1,429	251,502	256.90	129.57	(33)	(69)	(7,210)	(59)	(198)	(19,884)			
GRAHAM	373	713	218	495	92,417	247.77	129.62	(3)	(7)	(1,443)	(29)	(80)	(9,752)			
GREENLEE	40	83	20	63	10,375	259.38	125.00	(3)	(8)	(1,042)	(4)	(12)	(1,112)			
SANTA CRUZ	246	513	100	413	64,351	261.59	125.44	(8)	(32)	(4,555)	(3)	(23)	(2,218)			

1/EXCLUDES: PRIOR MONTH NET TOTALS OF 1,703 CASES; 4,011 RECIPIENTS; \$350,422.  
 1/GRANT DIVERSION TOTALS OF: 191 CASES; \$205,064.  
 ZERO PAY TOTALS OF 676 CASES; 1,908 RECIPIENTS.

	CURRENT	CURRENT MO.	CURRENT MO.	PRIOR MO.	PRIOR MO.	PRIOR MO.
	MO. CASES	RECIP.	DOLLARS	CASES	RECIP.	DOLLARS
PASQUAYAOUI	292	820	\$88,791	11	33	4,133
WM APACHE	669	1,763	\$200,974	13	37	1,701
SALT RIVER	80	278	\$24,129	5	14	553
NAVAJO	0	0	\$0	0	0	0
HOPI	150	421	\$36,003	3	12	704
<b>TOTAL</b>	<b>1,191</b>	<b>3,282</b>	<b>\$349,897</b>	<b>32</b>	<b>96</b>	<b>\$7,091</b>

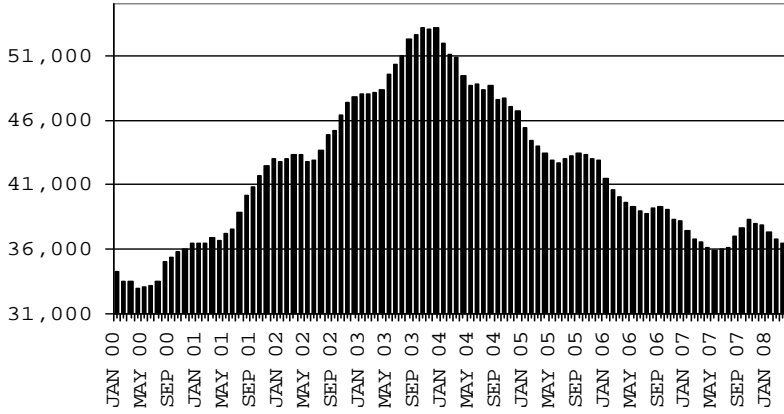
# TANF SUMMARY

## TABLES 1, 1A, 1B, & 1C

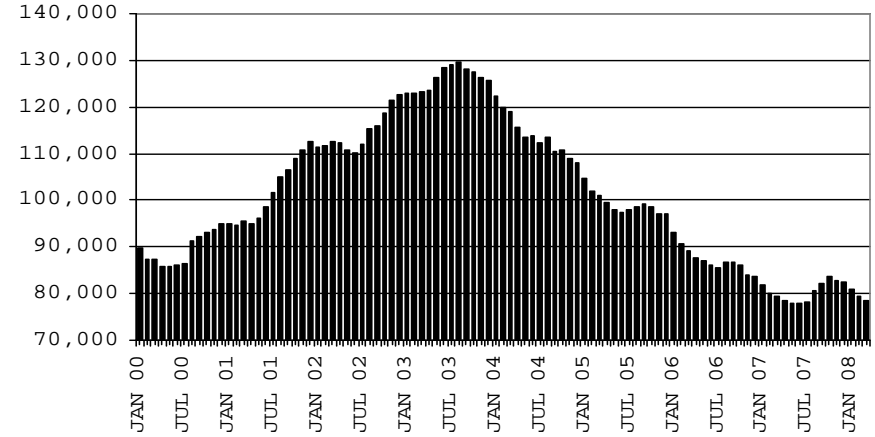
### COMPARISON OF CASES, RECIPIENTS, PAYMENTS & AVERAGE PAYMENTS

FOR 2000, 2001, 2002, 2003, 2004, 2005, 2006, & 2007

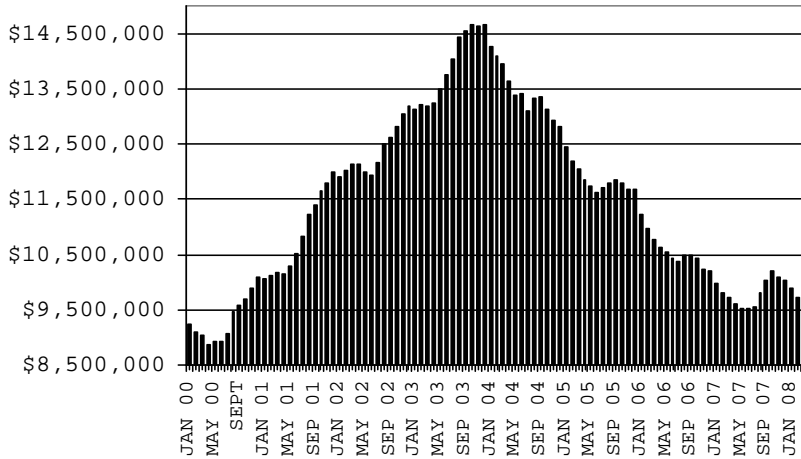
**CASES**



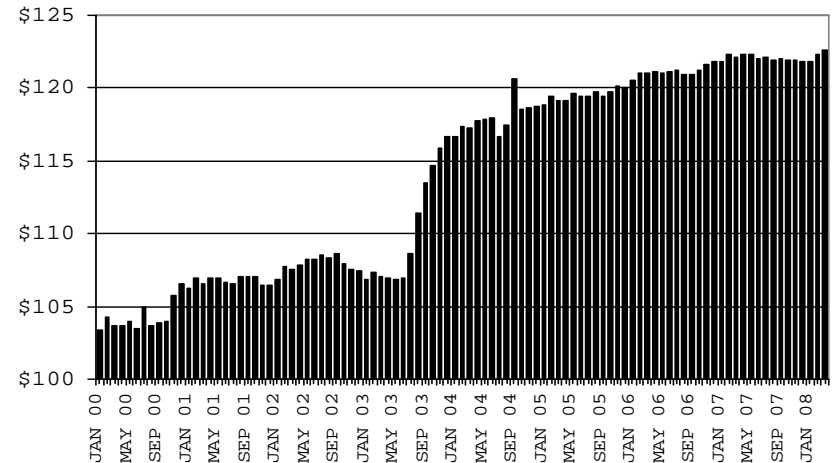
**RECIPIENTS**



**PAYMENTS**



**AVERAGE PAYMENTS PER RECIPIENT**



**TABLE 1**  
**CASH ASSISTANCE: ARIZONA 1.**

	MARCH 2008							CHANGE FROM					
								FEBRUARY 2008			MARCH 2007		
	FAMILIES (CASES)	(RECIP.)	ADULTS	CHILDREN	TOTAL PAYMENTS	AVERAGE PAYMENT/ CASE	AVERAGE PAYMENT/ RECIP.	FAMILIES (CASES)	PERSONS (RECIP.)	TOTAL PAYMENTS	FAMILIES (CASES)	PERSONS (RECIP.)	TOTAL PAYMENTS
ARIZONA	35,043	74,279	17,378	56,901	9,298,070	265.33	125.18	(340)	(1,030)	(104,449)	(220)	(1,595)	(166,531)
DISTRICT I													
MARICOPA	19,667	42,529	9,354	33,175	5,270,703	268.00	123.93	(114)	(366)	(37,604)	362	488	52,411
DISTRICT II													
PIMA	6,614	13,431	3,340	10,091	1,731,268	261.76	128.90	(30)	(127)	(14,120)	(209)	(769)	(82,739)
DISTRICT III													
APACHE	103	201	63	138	26,183	254.20	130.26	0	(15)	(528)	(5)	(35)	(2,507)
COCONINO	232	474	111	363	57,274	246.87	120.83	(10)	(21)	(2,191)	(26)	(68)	(9,311)
NAVAJO	1,222	2,872	780	2,092	331,561	271.33	115.45	(19)	(45)	(3,321)	(85)	(261)	(30,254)
YAVAPAI	656	1,250	269	981	164,785	251.20	131.83	(16)	(48)	(5,469)	16	(12)	3,256
DISTRICT IV													
LA PAZ	218	475	143	332	56,439	258.89	118.82	(4)	11	2	(15)	(30)	(5,748)
MOHAVE	1,305	2,622	732	1,890	340,320	260.78	129.79	(19)	(74)	(5,610)	(15)	(57)	(975)
YUMA	1,015	2,143	429	1,714	267,864	263.91	124.99	(38)	(81)	(7,475)	(74)	(239)	(26,987)
DISTRICT V													
GILA	631	1,267	399	868	164,860	261.27	130.12	(30)	(86)	(8,591)	(76)	(249)	(25,089)
PINAL	1,807	3,920	970	2,950	480,168	265.73	122.49	(17)	(81)	(6,305)	4	(57)	(5,073)
DISTRICT VI													
COCHISE	942	1,855	478	1,377	244,525	259.58	131.82	(28)	(46)	(6,254)	(57)	(180)	(18,886)
GRAHAM	357	673	199	474	89,139	249.69	132.45	(2)	(5)	(1,524)	(31)	(89)	(11,274)
GREENLEE	37	76	17	59	9,582	258.97	126.08	(3)	(8)	(1,054)	(4)	(10)	(1,445)
SANTA CRUZ	237	491	94	397	63,399	267.51	129.12	(10)	(38)	(4,405)	(5)	(27)	(1,910)

1/EXCLUDES: PRIOR MONTH NET TOTALS OF: 883 CASES; 2,150 RECIPIENTS; \$272,713.  
GRANT DIVERSION TOTALS OF: 191 CASES; \$205,064  
ZERO PAY TOTALS OF 671 CASES; 1889 RECIPIENTS.

	CURRENT MO. CASES	CURRENT MO. RECIP.	CURRENT MO. DOLLARS	PRIOR MO. CASES	PRIOR MO. RECIP	PRIOR MO. DOLLARS
PASQUAYUQUI	278	758	84,110	10	30	3,671
WM APACHE	617	1,533	179,614	10	25	950
SALT RIVER	80	278	24,129	5	14	553
NAVAJO	0	0	0	0	0	0
HOPAI	150	421	36,003	3	12	704
<b>TOTAL</b>	<b>1,125</b>	<b>2,990</b>	<b>323,856</b>	<b>28</b>	<b>81</b>	<b>5,878</b>

CASES WITH GRANT UNDER \$100 (SEE TABLE 1B).

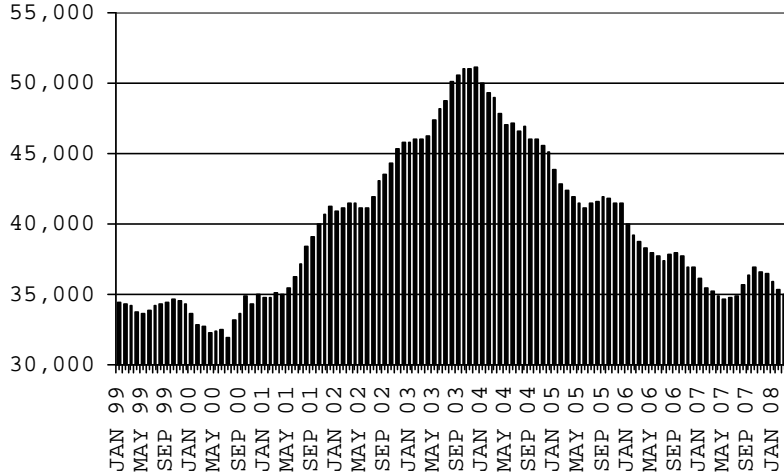
# CHART 1

## CASH ASSISTANCE PROGRAM

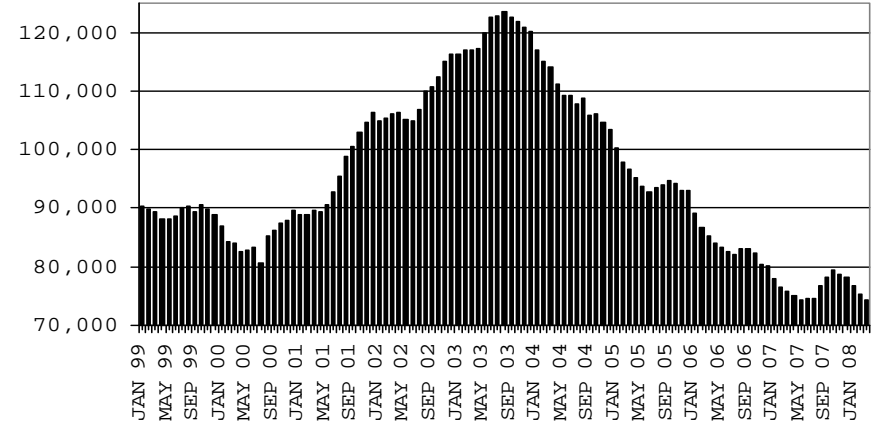
### COMPARISON OF CASES, RECIPIENTS, PAYMENTS & AVERAGE PAYMENTS

FOR 1999, 2000, 2001, 2002, 2003, 2004, 2005, 2006 & 2007

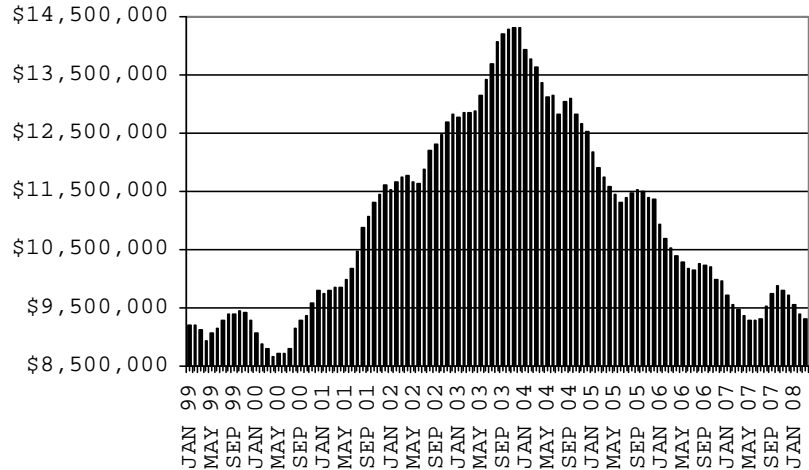
#### CASES



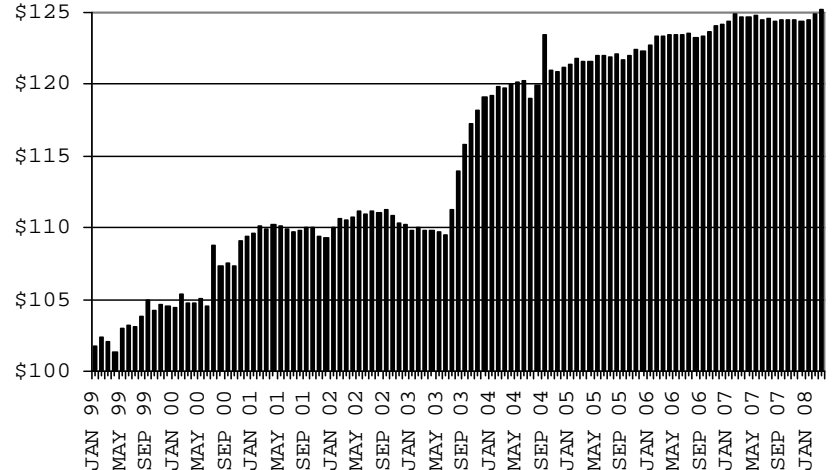
#### RECIPIENTS



#### PAYMENTS



#### AVERAGE PAYMENTS PER RECIPIENT



**TABLE 1A  
CA-UP**

**CASH ASSISTANCE UNEMPLOYED PARENT PROGRAM: ARIZONA 1**

	MARCH 2008							CHANGE FROM			MARCH 2007		
	FAMILIES (CASES)	PERSONS (RECIP.)	ADULTS	CHILDREN	TOTAL PAYMENTS	AVERAGE PAYMENT/ CASE	AVERAGE PAYMENT/ RECIP.	FAMILIES (CASES)	PERSONS (RECIP.)	TOTAL PAYMENTS	FAMILIES (CASES)	PERSONS (RECIP.)	TOTAL PAYMENTS
ARIZONA	780	2,829	1,188	1,641	268,847	344.68	95.03	3	(51)	(4,467)	240	788	75,808
DISTRICT I													
MARICOPA	381	1,293	499	794	129,110	338.87	99.85	8	(30)	(1,801)	162	493	50,922
DISTRICT II													
PIMA	133	499	215	284	44,411	333.92	89.00	6	30	103	46	178	14,184
DISTRICT III													
APACHE	2	8	4	4	836	418.00	104.50	(2)	(5)	(195)	(2)	(7)	(534)
COCONINO	2	7	4	3	516	258.00	73.71	1	3	302	0	0	(68)
NAVAJO	73	311	141	170	28,886	395.70	92.88	0	5	546	10	43	3,916
YAVAPAI	9	33	9	24	3,152	350.22	95.52	(3)	(11)	(776)	(1)	5	52
DISTRICT IV													
LA PAZ	10	43	13	30	3,385	338.50	78.72	(3)	(12)	(918)	1	9	500
MOHAVE	42	165	76	89	15,150	360.71	91.82	(1)	3	359	10	29	3,396
YUMA	12	41	14	27	3,569	297.42	87.05	(5)	(22)	(2,144)	0	(8)	(1,044)
DISTRICT V													
GILA	35	112	66	46	11,004	314.40	98.25	1	(5)	(652)	1	(6)	(750)
PINAL	56	234	105	129	20,019	357.48	85.55	5	14	1,941	12	56	4,764
DISTRICT VI													
COCHISE	14	46	22	24	4,944	353.14	107.48	(3)	(16)	(827)	(2)	(14)	(951)
GRAHAM	8	28	15	13	2,824	353.00	100.86	0	(1)	(23)	4	14	1,671
GREENLEE	2	6	3	3	694	347.00	115.67	0	0	0	1	3	347
SANTA CRUZ	1	3	2	1	347	347.00	115.67	(1)	(4)	(382)	(2)	(7)	(597)

1/EXCLUDES: PRIOR MONTH NET TOTALS OF: 77 CASES; 261 RECIPIENTS; \$29,691.  
GRANT DIVERSION TOTALS OF: 0 CASES; \$0.  
ZERO PAY TOTALS OF 5 CASES; 19 RECIPIENTS.

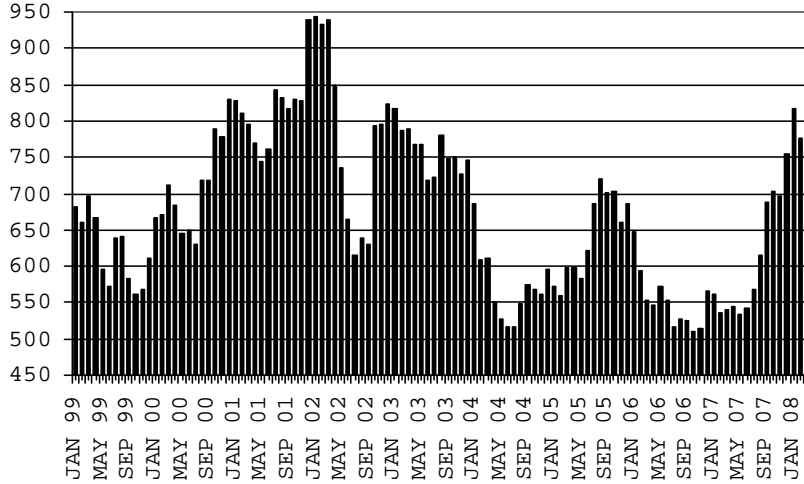
	CURRENT MO. CASES	CURRENT MO. RECIP.	CURRENT MO. DOLLARS	PRIOR MO. CASES	PRIOR MO. RECIP.	PRIOR MO. DOLLARS
PASQUAYAQUI	14	62	4,681	1	3	462
WM APACHE	52	230	21,360	3	12	751
SALT RIVER	0	0	0	0	0	0
NAVAJO	0	0	0	0	0	0
HOPÍ	0	0	0	0	0	0
<b>TOTAL</b>	<b>66</b>	<b>292</b>	<b>26,041</b>	<b>4</b>	<b>15</b>	<b>1,213</b>

CASES WITH GRANT UNDER \$100 (SEE TABLE 1C).

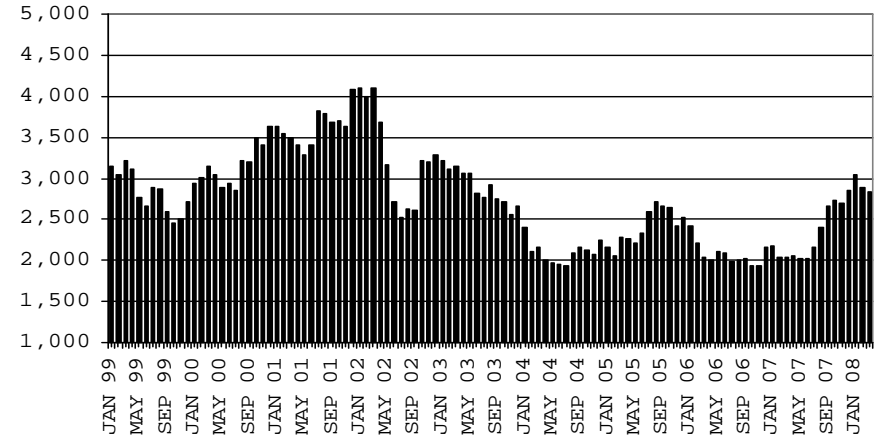
# CHART 1A

## CASH ASSISTANCE UNEMPLOYED PARENT PROGRAM COMPARISON OF CASES, RECIPIENTS, PAYMENTS & AVERAGE PAYMENTS FOR 1999, 2000, 2001, 2002, 2003, 2004, 2005, 2006 & 2007

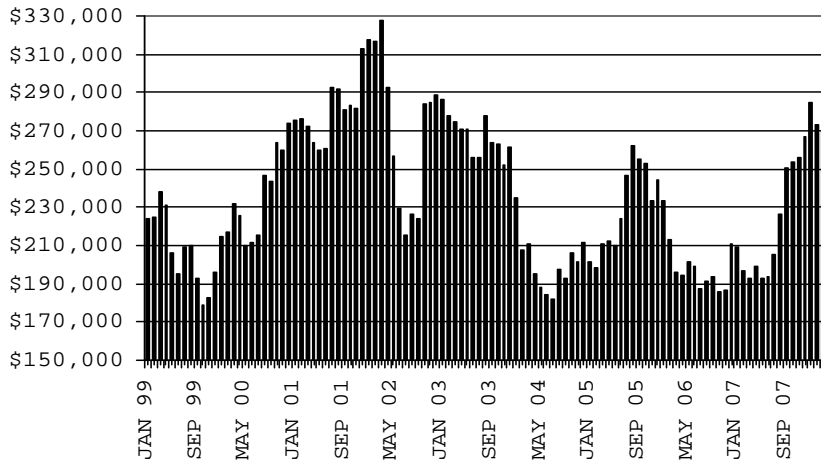
### CASES



### RECIPIENTS



### PAYMENTS



### AVERAGE PAYMENTS PER RECIPIENT

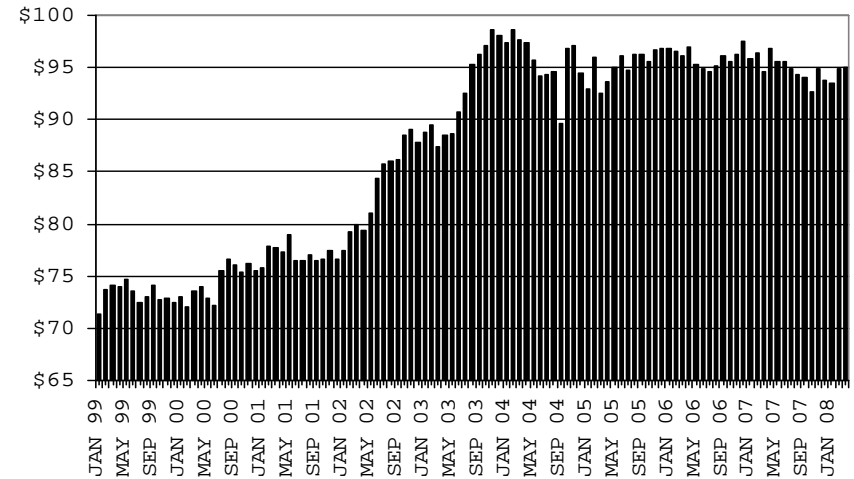




TABLE 1B 1/

CASH ASSISTANCE: ARIZONA  
 CASES WITH GRANT UNDER \$100

	MARCH 2008							CHANGE FROM					
								FEBRUARY 2008			MARCH 2007		
	FAMILIES (CASES)	PERSONS (RECIP.)	ADULTS	CHILDREN	TOTAL PAYMENTS	AVERAGE PAYMENT/ CASE	AVERAGE PAYMENT/ RECIP.	FAMILIES (CASES)	PERSONS (RECIP.)	TOTAL PAYMENTS	FAMILIES (CASES)	PERSONS (RECIP.)	TOTAL PAYMENTS
ARIZONA	655	1,297	342	955	47,553	72.60	36.66	50	71	1,671	(105)	(278)	(6,434)
DISTRICT I													
MARICOPA	338	674	157	517	23,312	68.97	34.59	28	38	479	(74)	(194)	(4,777)
DISTRICT II													
PIMA	133	265	75	190	9,640	72.48	36.38	8	6	380	(21)	(52)	(1,543)
DISTRICT III													
APACHE	3	7	2	5	299	99.67	42.71	(4)	(5)	(168)	(5)	(8)	(26)
COCONINO	3	5	2	3	170	56.67	34.00	0	(2)	(27)	(6)	(11)	(375)
NAVAJO	7	11	4	7	499	71.29	45.36	(4)	(12)	(188)	(2)	(4)	(296)
YAVAPAI	18	35	10	25	1,363	75.72	38.94	(1)	(1)	(123)	3	13	556
DISTRICT IV													
LA PAZ	7	13	7	6	447	63.86	34.38	2	3	122	4	2	216
MOHAVE	35	66	22	44	2,748	78.51	41.64	6	16	80	2	(3)	208
YUMA	24	51	13	38	1,696	70.67	33.25	1	4	(35)	2	6	(6)
DISTRICT V													
GILA	10	15	6	9	900	90.00	60.00	3	4	193	(2)	(6)	(71)
PINAL	37	83	24	59	3,288	88.86	39.61	11	18	739	(9)	(24)	(440)
DISTRICT VI													
COCHISE	23	40	12	28	2,033	88.39	50.83	(2)	(7)	(129)	2	2	(6)
GRAHAM	8	12	4	8	454	56.75	37.83	(1)	(1)	104	(2)	(5)	(149)
GREENLEE	1	1	0	1	99	99.00	99.00	0	0	12	(1)	(5)	(14)
SANTA CRUZ	8	19	4	15	605	75.63	31.84	3	10	232	4	11	289

EXCLUDES: PRIOR MONTH NET TOTALS OF 703 CASES; 1,467 RECIPIENTS; \$46,246.

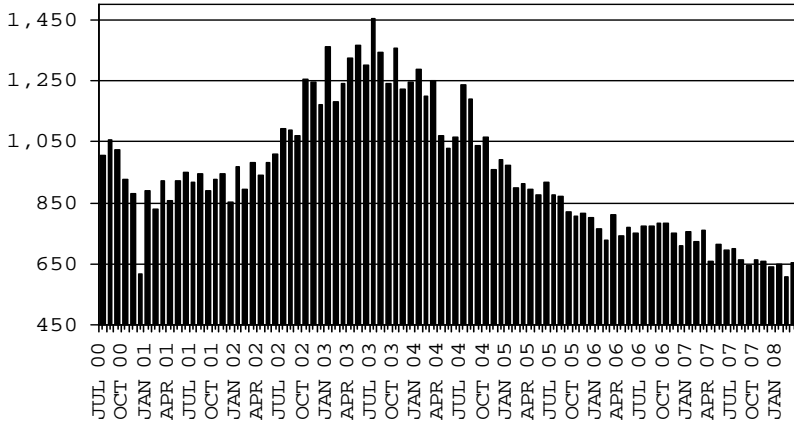
# CHART 1B

## CASH ASSISTANCE PROGRAM CASES WITH GRANT UNDER \$100

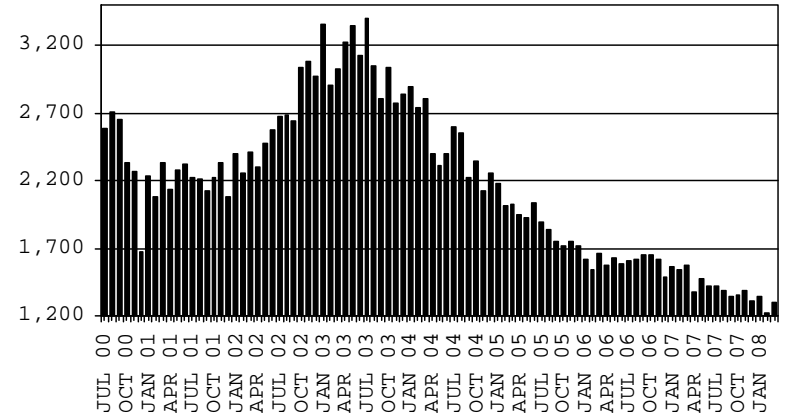
### COMPARISON OF CASES, RECIPIENTS, PAYMENTS & AVERAGE PAYMENTS

FOR 2000, 2001, 2002, 2003, 2004, 2005, 2006 & 2007

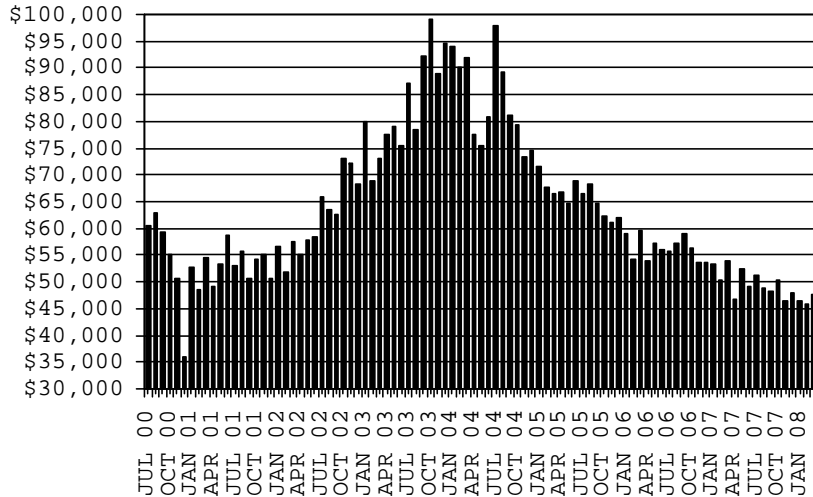
**CASES**



**RECIPIENTS**



**PAYMENTS**



**AVERAGE PAYMENTS PER RECIPIENT**

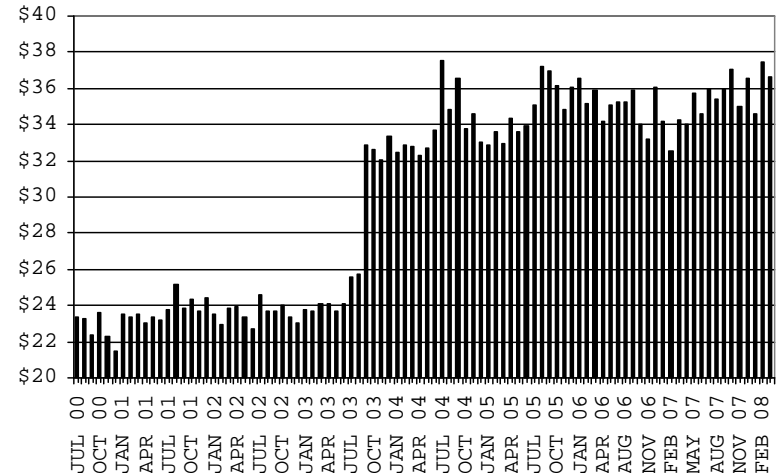


TABLE 1C 1/

CASH ASSISTANCE UNEMPLOYED PARENT PROGRAM: ARIZONA  
 CASES WITH GRANT UNDER \$100

	MARCH 2008								CHANGE FROM			MARCH 2007		
					AVERAGE	AVERAGE	FEBRUARY 2008			MARCH 2007				
	FAMILIES (CASES)	PERSONS (RECIP.)	ADULTS	CHILDREN	TOTAL PAYMENTS	PAYMENT/ CASE	PAYMENT/ RECIP.	FAMILIES (CASES)	PERSONS (RECIP.)	TOTAL PAYMENTS	FAMILIES (CASES)	PERSONS (RECIP.)	TOTAL PAYMENTS	
ARIZONA	10	25	7	18	523	52.30	20.92	(2)	(10)	(169)	0	(3)	(90)	
DISTRICT I														
MARICOPA	7	15	4	11	289	41.29	19.27	1	2	(30)	6	12	223	
DISTRICT II														
PIMA	1	2	1	1	60	60.00	30.00	0	(1)	(16)	(2)	(2)	(118)	
DISTRICT III														
APACHE	0	0	0	0	0	0.00	0.00	0	0	0	0	0	0	
COCONINO	0	0	0	0	0	0.00	0.00	0	0	0	0	0	0	
NAVAJO	0	0	0	0	0	0.00	0.00	0	0	0	0	0	0	
YAVAPAI	1	3	0	3	77	77.00	25.67	0	0	6	1	3	77	
DISTRICT IV														
LA PAZ	0	0	0	0	0	0.00	0.00	0	0	0	0	0	0	
MOHAVE	1	5	2	3	97	97.00	19.40	(1)	(4)	(65)	(1)	(1)	(90)	
YUMA	0	0	0	0	0	0.00	0.00	(1)	(4)	(29)	0	0	0	
DISTRICT V														
GILA	0	0	0	0	0	0.00	0.00	0	0	0	(2)	(9)	(141)	
PINAL	0	0	0	0	0	0.00	0.00	(1)	(3)	(35)	0	0	0	
DISTRICT VI														
COCHISE	0	0	0	0	0	0.00	0.00	0	0	0	(2)	(6)	(41)	
GRAHAM	0	0	0	0	0	0.00	0.00	0	0	0	0	0	0	
GREENLEE	0	0	0	0	0	0.00	0.00	0	0	0	0	0	0	
SANTA CRUZ	0	0	0	0	0	0.00	0.00	0	0	0	0	0	0	

EXCLUDES: PRIOR MONTH NET TOTALS OF 40 CASES; 133 RECIPIENTS; \$1,772.

# CHART 1C

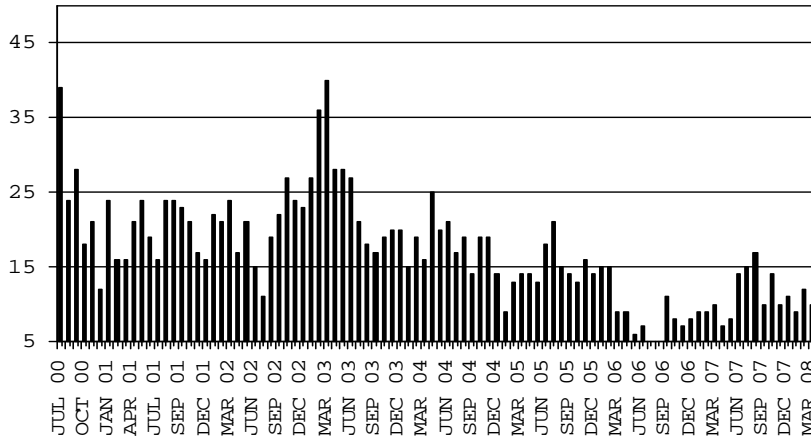
## CASH ASSISTANCE UNEMPLOYED PARENT PROGRAM

### CASES WITH GRANT UNDER \$100

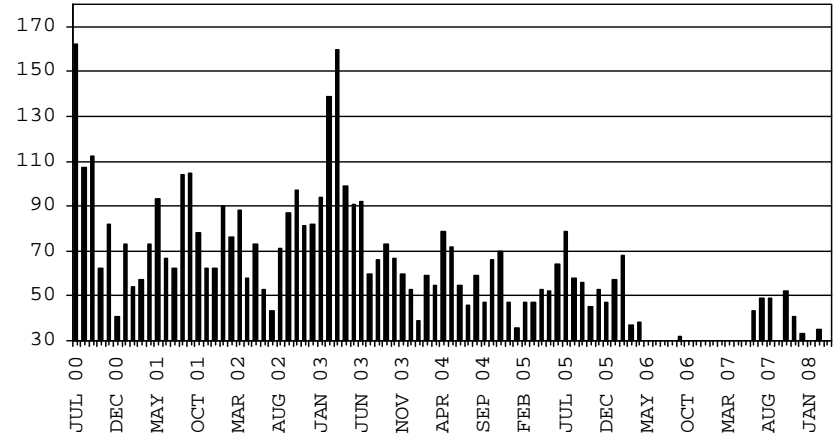
#### COMPARISON OF CASES, RECIPIENTS, PAYMENTS & AVERAGE PAYMENTS

FOR 2000, 2001, 2002, 2003, 2004, 2005, 2006 & 2007

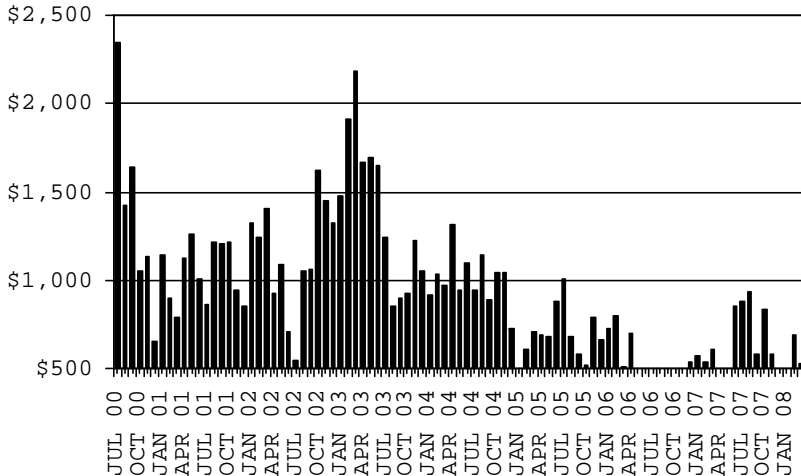
**CASES**



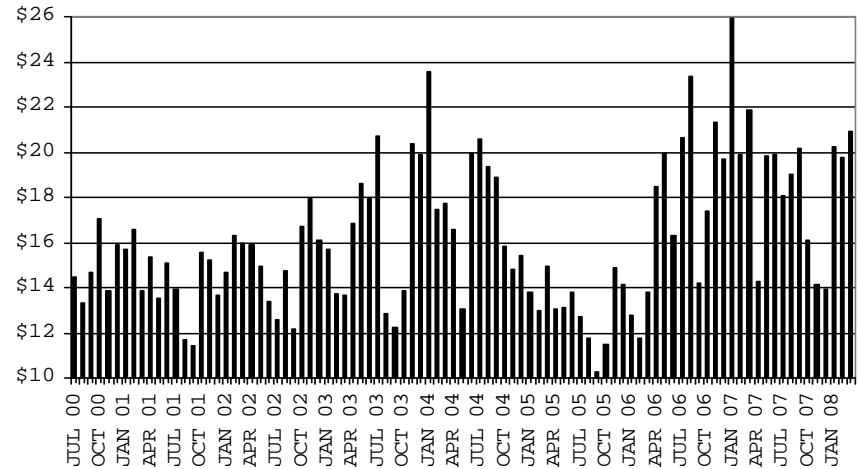
**RECIPIENTS**



**PAYMENTS**



**AVERAGE PAYMENTS PER RECIPIENT**



**TABLE 2**  
**GENERAL ASSISTANCE: ARIZONA 1,**

	CHANGE FROM											
	MARCH 2008					FEBRUARY 2008			MARCH 2007			
	NUMBER OF CASES	PERSONS (RECIP.)	TOTAL PAYMENTS	AVERAGE PAYMENT/ CASE	AVERAGE PAYMENT/ RECIP.	NUMBER OF CASES	PERSONS (RECIP.)	TOTAL PAYMENTS	NUMBER OF CASES	PERSONS (RECIP.)	TOTAL PAYMENTS	
ARIZONA	1,407	1,411	212,888	151.31	150.88	27	28	3,829	22	18	3,939	
DISTRICT I												
MARICOPA	559	560	84,707	151.53	151.26	18	18	2,843	(27)	(27)	(4,249)	
DISTRICT II												
PIMA	357	357	53,130	148.82	148.82	(4)	(4)	(776)	0	(1)	(31)	
DISTRICT III												
APACHE	15	16	2,262	150.80	141.38	3	3	386	(3)	(4)	(496)	
COCONINO	25	25	3,582	143.28	143.28	1	1	145	8	7	903	
NAVAJO	42	42	6,516	155.14	155.14	0	0	93	12	11	1,838	
YAVAPAI	62	63	9,811	158.24	155.73	1	1	226	(2)	(1)	(418)	
DISTRICT IV												
LA PAZ	15	15	2,140	142.67	142.67	(1)	(1)	(155)	7	6	761	
MOHAVE	95	95	14,335	150.89	150.89	8	8	1,171	17	17	2,492	
YUMA	30	30	4,248	141.60	141.60	3	3	357	(21)	(21)	(2,901)	
DISTRICT V												
GILA	138	139	21,030	152.39	151.29	(1)	0	(483)	26	26	4,703	
PINAL	31	31	4,388	141.55	141.55	1	1	70	3	3	968	
DISTRICT VI												
COCHISE	107	108	16,642	155.53	154.09	(2)	(1)	(553)	23	23	3,735	
GRAHAM	69	69	11,127	161.26	161.26	(1)	(1)	22	5	5	1,337	
GREENLEE	48	48	7,719	160.81	160.81	(3)	(3)	(389)	(1)	(1)	199	
SANTA CRUZ	9	9	1,557	173.00	173.00	2	2	346	(2)	(2)	(216)	
	4	4	627	156.75	156.75	0	0	0	4	4	627	
	8	8	1,224	153.00	153.00	0	0	65	4	4	727	

1/EXCLUDES: PRIOR MONTH NET TOTALS OF : 216 CASES; 217 RECIPIENTS; \$50,617.  
REFUGEE RESETTLEMENT PROGRAM: 138 CASES; 172 RECIPIENTS; \$31,285.

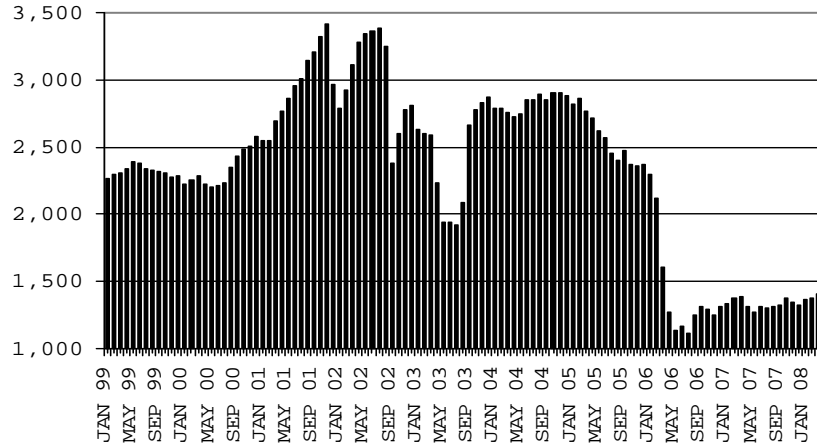
# CHART 2

## GENERAL ASSISTANCE PROGRAM

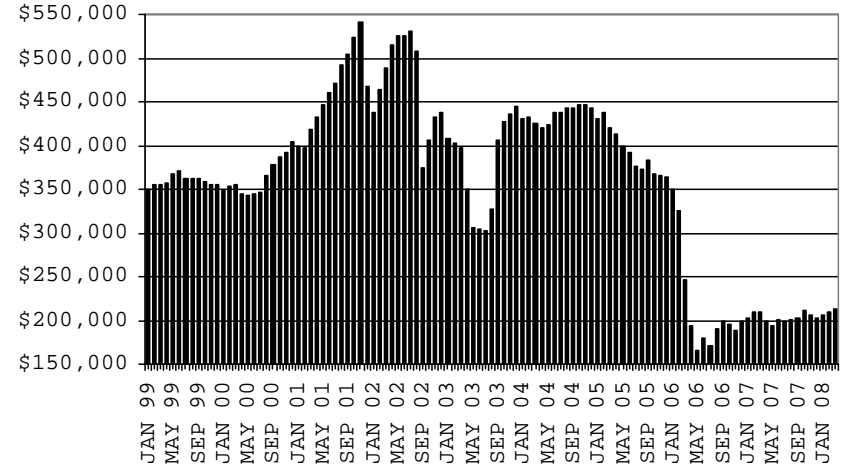
### COMPARISON OF CASES, PAYMENTS & AVERAGE PAYMENTS

FOR 1999, 2000, 2001, 2002, 2003, 2004, 2005, 2006 & 2007

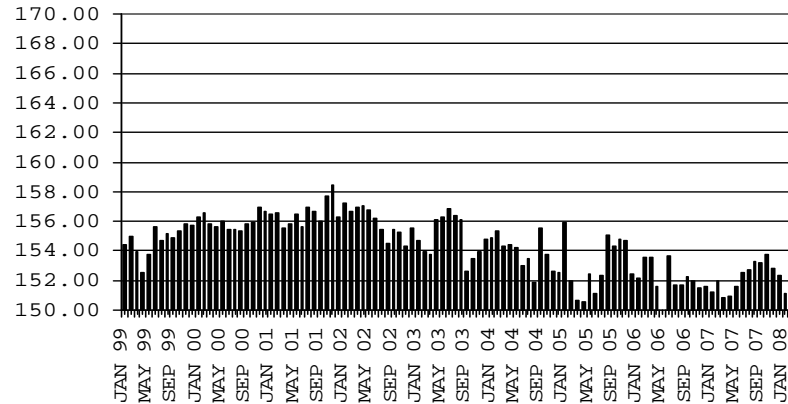
**CASES**



**PAYMENTS**



**AVERAGE PAYMENT PER CASE**



**TABLE 4**

**TUBERCULOSIS CONTROL: ARIZONA 1/**

	MARCH 2008					CHANGE FROM					
						FEBRUARY 2008			MARCH 2007		
	NUMBER OF CASES	PERSONS (RECIP.)	TOTAL PAYMENTS	AVERAGE PAYMENT/ CASE	AVERAGE PAYMENT/ RECIP.	NUMBER OF CASES	PERSONS (RECIP.)	TOTAL PAYMENTS	NUMBER OF CASES	PERSONS (RECIP.)	TOTAL PAYMENTS
ARIZONA	13	13	1,504	115.69	115.69	0	0	15	(2)	(2)	(258)
DISTRICT I											
MARICOPA	12	12	1,396	116.33	116.33	0	0	15	(3)	(3)	(366)
DISTRICT II											
PIMA	0	0	0	0.00	0.00	0	0	0	0	0	0
DISTRICT III	1	1	108	108.00	108.00	0	0	0	1	1	108
APACHE	0	0	0	0.00	0.00	0	0	0	0	0	0
COCONINO	0	0	0	0.00	0.00	0	0	0	0	0	0
NAVAJO	0	0	0	0.00	0.00	0	0	0	0	0	0
YAVAPAI	1	1	108	108.00	108.00	0	0	0	1	1	108
DISTRICT IV	0	0	0	0.00	0.00	0	0	0	0	0	0
LA PAZ	0	0	0	0.00	0.00	0	0	0	0	0	0
MOHAVE	0	0	0	0.00	0.00	0	0	0	0	0	0
YUMA	0	0	0	0.00	0.00	0	0	0	0	0	0
DISTRICT V	0	0	0	0.00	0.00	0	0	0	0	0	0
GILA	0	0	0	0.00	0.00	0	0	0	0	0	0
PINAL	0	0	0	0.00	0.00	0	0	0	0	0	0
DISTRICT VI	0	0	0	0.00	0.00	0	0	0	0	0	0
COCHISE	0	0	0	0.00	0.00	0	0	0	0	0	0
GRAHAM	0	0	0	0.00	0.00	0	0	0	0	0	0
GREENLEE	0	0	0	0.00	0.00	0	0	0	0	0	0
SANTA CRUZ	0	0	0	0.00	0.00	0	0	0	0	0	0

1/EXCLUDES: PRIOR MONTH NET TOTALS OF : 0 CASES; 0 RECIPIENTS; \$0.

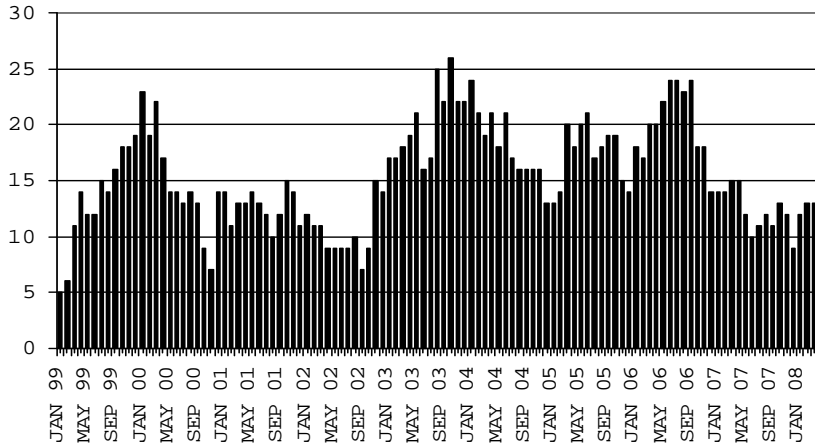
# CHART 4

## TUBERCULOSIS CONTROL PROGRAM

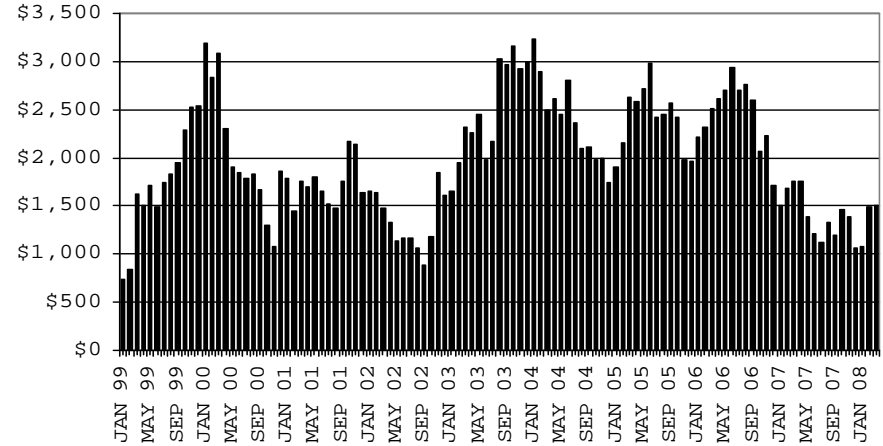
### COMPARISON OF CASES, PAYMENTS & AVERAGE PAYMENTS

FOR 1999, 2000, 2001, 2002, 2003, 2004, 2005, 2006 & 2007

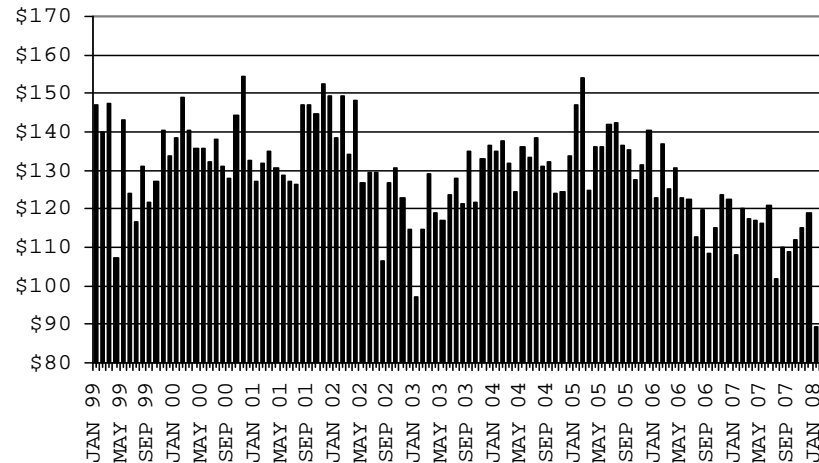
**CASES**



**PAYMENTS**



**AVERAGE PAYMENT PER CASE**





**TABLE 6**

**FOOD STAMP PROGRAM: ARIZONA 1/**

	CHANGE FROM											
	MARCH 2008					FEBRUARY 2008			MARCH 2007			
	HOUSEHOLDS	PERSONS	TOTAL COUPON ISSUANCE	AVERAGE ALLOT./ HOUSEHOLD	AVERAGE ALLOT./ PERSON	HOUSEHOLDS	PERSONS	TOTAL COUPON ISSUANCE	HOUSEHOLDS	PERSONS	TOTAL COUPON ISSUANCE	
ARIZONA	255,212	618,447	62,269,676	243.99	100.69	5,587	11,884	1,275,163	35,019	80,983	9,887,873	
DISTRICT I												
MARICOPA	127,951	311,832	32,029,890	250.33	102.72	3,164	7,363	804,611	19,209	46,375	5,589,173	
DISTRICT II												
PIMA	45,691	104,016	10,490,955	229.61	100.86	1,144	2,264	243,492	6,227	13,006	1,648,167	
DISTRICT III												
APACHE	6,380	19,491	1,900,653	297.91	97.51	118	194	21,570	176	188	123,569	
COCONINO	6,003	17,150	1,643,898	273.85	95.85	93	126	9,296	840	1,774	232,416	
NAVAJO	9,944	27,751	2,707,243	272.25	97.55	92	186	11,113	911	2,539	337,099	
YAVAPAI	7,354	14,957	1,471,322	200.07	98.37	377	711	83,873	1,206	2,601	268,332	
DISTRICT IV												
LA PAZ	1,331	2,904	301,642	226.63	103.87	19	52	6,478	53	82	13,371	
MOHAVE	11,987	25,036	2,575,704	214.87	102.88	218	291	24,266	1,985	3,898	467,244	
YUMA	9,663	25,551	2,256,097	233.48	88.30	(13)	(63)	(7,557)	943	2,361	199,671	
DISTRICT V												
GILA	3,642	8,404	858,279	235.66	102.13	12	(20)	(1,523)	361	651	90,617	
PINAL	13,001	32,606	3,298,327	253.70	101.16	237	554	50,597	2,154	5,486	643,911	
DISTRICT VI												
COCHISE	7,205	16,013	1,553,975	215.68	97.04	51	102	21,244	646	1,252	162,918	
GRAHAM	2,179	5,186	496,374	227.80	95.71	61	104	9,186	107	240	35,276	
GREENLEE	239	480	48,604	203.36	101.26	2	(6)	(1,217)	(23)	(85)	(4,188)	
SANTA CRUZ	2,642	7,070	636,713	241.00	90.06	12	26	(266)	224	615	80,297	

1/EXCLUDES: PRIOR MONTH NET TOTALS OF : 9,034 CASES; 22,786 RECIPIENTS; \$1,141,420.  
 AGED CANCELATIONS: 0 CASES; 0 RECIPIENTS; 0.  
 FS COUPON CONVERSIONS: 0 CASES; 0 RECIPIENTS; \$0.  
 FS REINSTATED: 0 CASES; \$0.  
 FS ZERO PAY: 6,939 CASES; 27,529 RECIPIENTS.

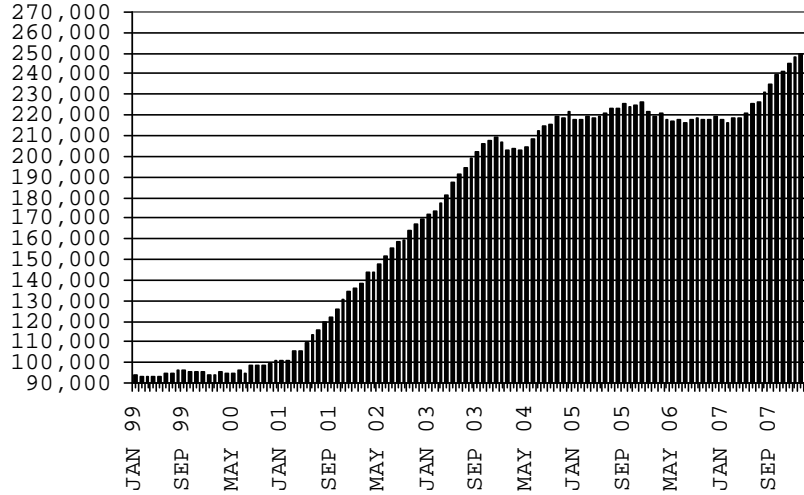
# CHART 6

## FOOD STAMPS PROGRAM

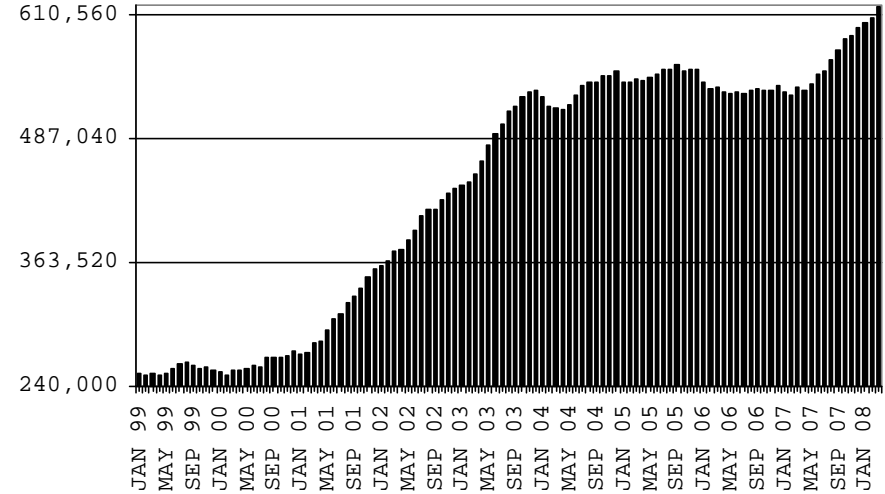
### COMPARISON OF HOUSEHOLDS, RECIPIENTS, PAYMENTS & AVERAGE PAYMENTS

FOR 1999, 2000, 2001, 2002, 2003, 2004, 2005, 2006 & 2007

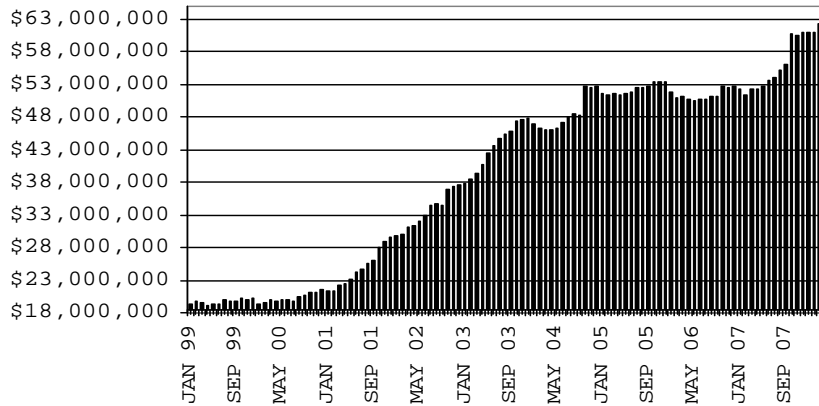
#### HOUSEHOLDS



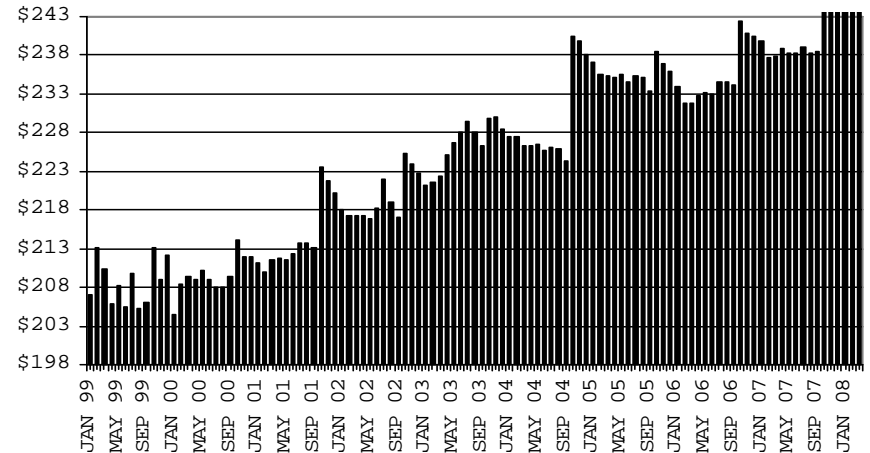
#### RECIPIENTS



#### TOTAL PAYMENTS



#### AVERAGE PAYMENT PER HOUSEHOLD



**TABLE 7A**  
**MEDICAL ASSISTANCE PROGRAM**  
**RECIPIENTS**

**MARCH 2008**

	SOBRA WOMAN 133% FPL	SOBRA CHILD	ADULT W/O CHILD 100% FPL	FOSTER CARE	1931 36% FPL	FEDERAL EMERGENCY SERVICES	INFANTS	ADULT W/O CHILD 40% FPL	MEDICAL W/SPEND DOWN	SOBRA WOMAN 100% FPL	SOBRA CHILD 100% FPL	TRANSITIONAL MEDICAL T1 - T4	1931 100% FPL	YATI	OTHER	TOTAL CASES
ARIZONA	11,871	62,893	39,287	9,870	264,733	85,776	50,428	96,114	5,374	3,413	164,058	43,195	78,648	242	23,008	938,910
DISTRICT I																
MARICOPA	6,113	35,266	16,883	4,935	139,790	66,425	30,309	42,788	2,794	1,702	92,179	20,533	36,920	117	11,282	508,036
DISTRICT II																
PIMA	1,794	9,629	7,774	2,801	41,220	10,598	7,099	17,909	844	576	25,804	7,015	14,323	73	4,137	151,596
DISTRICT III																
APACHE	261	1,395	885	41	10,531	105	962	4,303	59	88	3,713	866	2,198	2	370	25,779
COCONINO	375	1,454	1,257	114	7,300	541	1,201	3,129	104	91	3,655	1,145	2,167	9	353	22,895
NAVAJO	378	2,047	1,308	114	11,393	334	1,417	4,886	175	99	4,442	1,254	2,851	2	572	31,272
YAVAPAI	437	1,818	1,770	431	5,684	1,615	1,347	3,054	213	120	4,115	1,250	2,525	13	960	25,352
DISTRICT IV																
LA PAZ	41	209	224	14	1,164	193	177	569	35	17	623	207	334	1	150	3,958
MOHAVE	547	2,070	2,089	237	9,554	884	1,547	5,024	317	176	6,466	1,777	3,771	4	1,252	35,715
YUMA	586	2,483	2,133	241	9,134	1,915	1,880	3,137	222	166	7,560	4,238	4,487	1	1,198	39,381
DISTRICT V																
GILA	139	705	572	81	3,881	139	478	1,972	100	27	1,542	482	1,012	2	300	11,432
PINAL	653	3,738	1,910	508	13,887	1,723	2,249	5,194	263	176	6,851	2,007	3,699	10	1,128	43,996
DISTRICT VI																
COCHISE	260	1,027	1,335	252	6,211	683	868	2,458	139	86	3,505	1,157	2,230	7	740	20,958
GRAHAM	149	444	419	60	2,043	67	388	883	29	30	1,062	483	653	1	129	8,840
GREENLEE	22	46	40	11	260	10	64	107	10	2	114	56	69	0	19	830
SANTA CRUZ	116	562	688	30	2,681	544	442	701	70	57	2,427	725	1,409	0	418	10,870

**TABLE 7B**

**MEDICAL ASSISTANCE PROGRAM**

**RECIPIENTS**

**CHANGE FROM**

**FEBRUARY 2008**

	SOBRA WOMAN 133% FPL	SOBRA CHILD	ADULT W/O CHILD 100% FPL	FOSTER CARE	1931 36% FPL	FEDERAL EMERGENCY SERVICES	INFANTS	ADULT W/O CHILD 40% FPL	MEDICAL W/SPEND DOWN	SOBRA WOMAN 100% FPL	SOBRA CHILD 100% FPL	TRANSITIONAL MEDICAL T1 - T4	1931 100% FPL	YATI	OTHER	TOTAL CASES
ARIZONA	341	824	946	79	4,909	905	381	2,624	293	135	2,379	(752)	1,482	12	193	14,751
DISTRICT I																
MARICOPA	183	556	473	47	3,467	800	241	1,429	106	40	1,788	(138)	871	3	63	9,929
DISTRICT II																
PIMA	32	103	217	11	677	99	19	653	51	23	388	(115)	216	1	93	2,468
DISTRICT III																
APACHE	18	71	25	4	125	0	7	31	(2)	1	22	(122)	(38)	1	8	151
COCONINO	10	44	49	(1)	(9)	31	14	38	9	0	88	67	97	(1)	(2)	434
NAVAJO	13	5	27	0	128	2	21	99	3	(7)	60	(80)	45	0	9	325
YAVAPAI	1	31	19	6	111	22	(6)	91	13	9	13	(62)	95	3	7	353
DISTRICT IV																
LA PAZ	5	(23)	11	(6)	(27)	3	(3)	(12)	(4)	1	43	(10)	11	1	(2)	(12)
MOHAVE	6	37	70	12	86	(18)	10	109	19	19	64	(64)	83	2	5	440
YUMA	14	(36)	8	(2)	(18)	(54)	29	26	28	(3)	(74)	(69)	10	0	(4)	(145)
DISTRICT V																
GILA	5	(10)	13	2	(22)	6	10	(10)	15	(8)	23	(35)	41	0	0	30
PINAL	18	59	38	1	302	14	27	85	26	25	16	(50)	75	1	(5)	632
DISTRICT VI																
COCHISE	12	(19)	(19)	3	54	(10)	5	63	(3)	14	(47)	(48)	(1)	1	1	6
GRAHAM	18	8	18	1	(31)	(4)	(8)	31	13	3	(6)	(8)	13	0	2	50
GREENLEE	(4)	3	2	0	(25)	3	6	5	2	2	(3)	(8)	2	0	1	(14)
SANTA CRUZ	10	(5)	(5)	1	91	11	9	(14)	17	16	4	(10)	(38)	0	17	104

**TABLE 7C**  
**MEDICAL ASSISTANCE PROGRAM**  
**RECIPIENTS**

**CHANGE FROM**

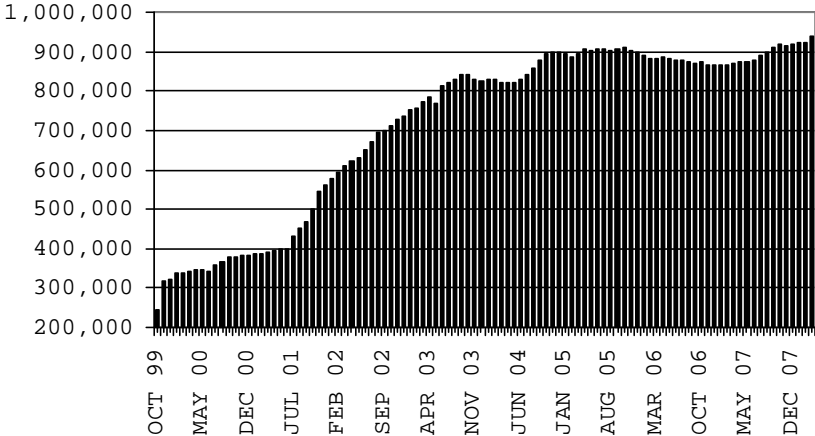
**MARCH 2007**

	SOBRA WOMAN 133% FPL	SOBRA CHILD	ADULT W/O CHILD 100% FPL	FOSTER CARE	1931 36% FPL	FEDERAL EMERGENCY SERVICES	INFANTS	ADULT W/O CHILD 40% FPL	MEDICAL W/SPEND DOWN	SOBRA WOMAN 100% FPL	SOBRA CHILD 100% FPL	TRANSITIONAL MEDICAL T1 - T4	3E 1931 100% FPL	YATI	OTHER	TOTAL CASES
ARIZONA	730	3,663	2,989	1,152	17,764	1,808	715	16,964	66	181	14,788	(2,579)	7,510	20	2,959	68,730
DISTRICT I																
MARICOPA	463	2,845	1,599	569	13,210	2,280	430	9,115	(209)	97	10,747	(1,250)	4,455	1	1,491	45,843
DISTRICT II																
PIMA	68	418	573	340	2,447	0	152	3,570	191	43	1,762	(410)	1,294	7	522	10,977
DISTRICT III	(22)	(45)	53	99	798	20	65	1,557	(40)	(2)	548	(758)	339	7	271	2,890
APACHE	(2)	7	(56)	11	(95)	(4)	(35)	212	(5)	5	(74)	(317)	(103)	2	43	(411)
COCONINO	(44)	58	57	(3)	227	7	53	308	7	5	28	(96)	4	5	18	634
NAVAJO	28	(147)	(85)	12	277	(10)	93	467	7	(18)	213	(147)	109	(2)	96	893
YAVAPAI	(4)	37	137	79	389	27	(46)	570	(49)	6	381	(198)	329	2	114	1,774
DISTRICT IV	117	102	419	14	452	(337)	(127)	1,337	4	40	1,111	205	699	1	387	4,424
LA PAZ	(10)	(28)	3	(2)	(82)	2	(13)	12	0	(3)	18	54	(21)	1	25	(44)
MOHAVE	74	0	302	18	749	(122)	(52)	1,062	9	28	691	141	437	2	197	3,536
YUMA	53	130	114	(2)	(215)	(217)	(62)	263	(5)	15	402	10	283	(2)	165	932
DISTRICT V	48	404	284	121	829	(105)	107	956	62	10	515	(294)	451	0	146	3,534
GILA	8	(76)	28	(1)	(43)	(14)	4	207	25	(10)	52	(73)	75	(2)	39	219
PINAL	40	480	256	122	872	(91)	103	749	37	20	463	(221)	376	2	107	3,315
DISTRICT VI	56	(61)	61	9	28	(50)	88	429	58	(7)	105	(72)	272	4	142	1,062
COCHISE	13	(91)	60	12	74	(23)	23	266	42	(5)	49	(16)	181	4	63	652
GRAHAM	25	9	18	(2)	(81)	0	31	103	(8)	1	9	(100)	32	0	20	57
GREENLEE	1	6	(9)	(1)	(66)	3	7	(11)	8	(3)	(32)	(1)	4	0	(3)	(97)
SANTA CRUZ	17	15	(8)	0	101	(30)	27	71	16	0	79	45	55	0	62	450

# CHART 7

## MEDICAL ASSISTANCE PROGRAM COMPARISON OF RECIPIENTS FOR 1999, 2000, 2001, 2002, 2003, 2004, 2005, 2006 & 2007

**TOTAL RECIPIENTS**



**NEW SERIES WHICH INCLUDES 1931**