



State of Arizona

Department of Economic Security

Family Assistance Administration

Statistical Bulletin

June, 2008

Phone: (602) 542-3678

<http://www.azdes.gov/faa/Statistics.asp>

**** STATISTICAL BULLETIN ****
ARIZONA DEPARTMENT OF ECONOMIC SECURITY
FAMILY ASSISTANCE ADMINISTRATION
BOX 6123, PHOENIX, ARIZONA 85005
PHONE (602) 542-3678

JUNE 2008

THIS ISSUE OF THE STATISTICAL BULLETIN COMPARES JUNE 2008 DATA FOR EACH OF THE INDICATED PROGRAMS WITH THE INFORMATION FOR MAY 2008 AND JUNE 2007. STATEWIDE SUMMARIES OF ACTIVITY WITHIN EACH OF THE SPECIFIC PROGRAMS FOR THIS REPORT PERIOD ARE DISCUSSED BELOW. THE TABLES COMPARE CURRENT AND PRIOR MONTH DATA. DISTRICT AND COUNTY COMPARISONS ARE PROVIDED WITHIN THIS BULLETIN

CASH ASSISTANCE (CA)

COMPARING TO MAY 2008, JUNE 2008 CASES DECREASED BY 273 (0.78%) TO 34,617. RECIPIENTS DECREASED BY 613 (0.83%) TO 73,317. PAYMENTS DECREASED BY \$81,256 (0.88%) TO \$9,168,839. AVERAGE PAYMENT PER CASE DECREASED BY \$0.25 (0.09%) TO \$264.87. PAYMENT PER RECIPIENT DECREASED BY \$0.06 (0.05%) TO \$125.06.

COMPARING TO JUNE 2007, JUNE 2008 CASES DECREASED BY 173 (0.50%). RECIPIENTS DECREASED BY 1,225 (1.64%). TOTAL PAYMENTS DECREASED BY \$112,684 (1.21%). THE AVERAGE PAYMENT PER CASE DECREASED BY \$1.92 (0.72%). THE AVERAGE PAYMENT PER RECIPIENT INCREASED BY \$0.55 (0.44%).

CASH ASSISTANCE UNEMPLOYED PARENT PROGRAM (CA-UP)

COMPARING TO MAY 2008, JUNE 2008 CASES DECREASED BY 8 (0.98%) TO 811. RECIPIENTS INCREASED BY 0 (0.00%) TO 2,920. PAYMENTS DECREASED BY \$5,330 (1.87%) TO \$279,233. AVERAGE PAYMENT PER CASE DECREASED BY \$3.14 (0.90%) TO \$344.31. PAYMENT PER RECIPIENT DECREASED BY \$1.82 (1.87%) TO \$95.63.

COMPARING TO JUNE 2007, JUNE 2008 CASES INCREASED BY 269 (49.63%). RECIPIENTS INCREASED BY 897 (44.34%). TOTAL PAYMENTS INCREASED BY \$85,967 (44.48%). THE AVERAGE PAYMENT PER CASE DECREASED BY \$12.27 (3.44%). THE AVERAGE PAYMENT PER RECIPIENT INCREASED BY \$0.10 (0.10%).

CASH ASSISTANCE WITH GRANT UNDER \$100 (CA-MOE)

COMPARING TO MAY 2008, JUNE 2008 CASES DECREASED BY 28 (4.06%) TO 661. RECIPIENTS DECREASED BY 97 (6.93%) TO 1,302. PAYMENTS DECREASED BY \$2,848 (5.70%) TO \$47,108. AVERAGE PAYMENT PER CASE DECREASED BY \$1.24 (1.71%) TO \$71.27. AVERAGE PAYMENT PER RECIPIENT INCREASED BY \$0.47 (1.32%) TO \$36.18.

COMPARING TO JUNE 2007, JUNE 2008 CASES DECREASED BY 35 (5.03%). RECIPIENTS DECREASED BY 117 (8.25%). TOTAL PAYMENTS DECREASED BY \$1,965 (4.00%). THE AVERAGE PAYMENT PER CASE INCREASED BY \$0.76 (1.08%). THE AVERAGE PAYMENT PER RECIPIENT INCREASED BY \$1.60 (4.63%).

CASH ASSISTANCE UNEMPLOYED PARENT PROGRAM WITH GRANT UNDER \$100 (CA-UP-MOE) NEW PROGRAM STARTING 7/01

COMPARING TO MAY 2008, JUNE 2008 CASES DECREASED BY 9 (45.00%) TO 11. RECIPIENTS DECREASED BY 24 (39.34%) TO 37. PAYMENTS DECREASED BY \$489 (43.01%) TO \$648. AVERAGE PAYMENT PER CASE INCREASED BY \$2.06 (3.62%) TO \$58.91. PAYMENT PER RECIPIENT DECREASED BY \$1.13 (6.06%) TO \$17.51.

COMPARING TO JUNE 2007, JUNE 2008 CASES DECREASED BY 3 (21.43%). RECIPIENTS DECREASED BY 6 (0.53%). TOTAL PAYMENTS DECREASED BY \$207 (24.21%). THE AVERAGE PAYMENT PER CASE DECREASED BY \$2.16 (3.54%). THE AVERAGE PAYMENT PER RECIPIENT DECREASED BY \$2.37 (11.92%).

GENERAL ASSISTANCE (GA)

COMPARING TO MAY 2008, JUNE 2008 CASES DECREASED BY 52 (3.70%) TO 1,352. RECIPIENTS DECREASED BY 52 (3.70%) TO 1,355. PAYMENTS DECREASED BY \$7,950 (3.73%) TO \$205,275. AVERAGE PAYMENT PER CASE DECREASED BY \$0.04 (0.03%) TO \$151.83. AVERAGE PAYMENT PER RECIPIENT DECREASED BY \$0.06 (0.04%) TO \$151.49.

COMPARING TO JUNE 2007, JUNE 2008 CASES INCREASED BY 40 (3.05%). RECIPIENTS INCREASED BY 33 (2.50%). TOTAL PAYMENTS INCREASED BY \$5,147 (2.57%). THE AVERAGE PAYMENT PER CASE DECREASED BY \$0.71 (0.46%). THE AVERAGE PAYMENT PER RECIPIENT INCREASED BY \$0.11 (0.07%).

TUBERCULOSIS CONTROL PROGRAM (TC)

COMPARING TO MAY 2008, JUNE 2008 CASES DECREASED BY 3 (30.00%) TO 7. RECIPIENTS DECREASED BY 3 (30.00%) TO 7. PAYMENTS DECREASED BY \$389 (32.15%) TO \$821. AVERAGE PAYMENT PER CASE DECREASED BY \$3.71 (3.07%) TO \$117.29. AVERAGE PAYMENT PER RECIPIENT DECREASED BY \$3.71 (3.07%) TO \$117.29.

COMPARING TO JUNE 2007, JUNE 2008 CASES DECREASED BY 3 (30.00%). RECIPIENTS DECREASED BY 3 (30.00%). TOTAL PAYMENTS DECREASED BY \$389 (32.15%). THE AVERAGE PAYMENT PER CASE DECREASED BY \$3.71 (3.07%). THE AVERAGE PAYMENT PER RECIPIENT DECREASED BY \$3.71 (3.07%).

FOOD STAMP PROGRAM (FS)

COMPARING TO MAY 2008, JUNE 2008 FOOD STAMP HOUSEHOLDS INCREASED BY 2,972 (1.13%) TO 266,671. PERSONS RECEIVING FOOD STAMPS INCREASED BY 7,019 (1.10%) TO 645,799. TOTAL COUPON ISSUANCE INCREASED BY \$780,908 (1.22%) TO \$64,881,161. THE AVERAGE HOUSEHOLD ALLOTMENT INCREASED BY \$0.22 (0.09%) TO \$243.30. THE AVERAGE ALLOTMENT PER PERSON INCREASED BY \$0.12 (0.12%) TO \$100.47.

COMPARING TO JUNE 2007, JUNE 2008 FOOD STAMP HOUSEHOLDS INCREASED BY 41,366 (18.36%). PERSONS RECEIVING FOOD STAMPS INCREASED BY 94,334 (17.11%). TOTAL COUPON ISSUANCE INCREASED BY \$11,192,400 (20.85%). THE AVERAGE ALLOTMENT PER HOUSEHOLD INCREASED BY \$5.01 (2.10%). THE AVERAGE ALLOTMENT PER PERSON INCREASED BY \$3.11 (3.20%).

MEDICAL ASSISTANCE PROGRAM (MA) NEW TABLE INCLUDES PROP. 204 CATEGORIES

COMPARING TO MAY 2008, JUNE 2008 TOTAL RECIPIENTS TOTAL RECIPIENTS INCREASED BY 839 (0.09%). SOBRA WOMEN AT 140% FPL DECREASED BY 122 (1.04%). SOBRA CHILDREN INCREASED BY 725 (1.17%). ADULTS W/O CHILD AT 100% INCREASED BY 23 (0.06%). FOSTER CARE INCREASED BY 119 (1.17%). 1931 AT 36% FPL INCREASED BY 440 (0.16%). EMERGENCY SERVICES DECREASED BY 794 (0.94%). INFANTS DECREASED BY 288 (0.58%). ADULT W/O CHILD AT 140% INCREASED BY 478 (0.49%). MEDICAL W/SPEND DOWN DECREASED BY 110 (2.19%). SOBRA WOMAN AT 100% INCREASED BY 12 (0.34%). SOBRA CHILD AT 100% DECREASED BY 71 (0.04%). TRANSITIONAL MEDICAL DECREASED BY 47 (0.11%). 1931 AT 100% DECREASED BY 168 (0.21%). YATI INCREASED BY 4 (1.60%). ALL OTHER CATEGORIES INCREASED BY 638 (2.79%).

COMPARING TO JUNE 2007, JUNE 2008 TOTAL RECIPIENTS TOTAL RECIPIENTS INCREASED BY 67,046 (7.64%). SOBRA WOMEN AT 140% FPL INCREASED BY 231 (2.04%). SOBRA CHILDREN INCREASED BY 1,977 (3.27%). ADULTS W/O CHILD AT 100% INCREASED BY 3,355 (9.29%). FOSTER CARE INCREASED BY 1,178 (12.97%). 1931 AT 36% FPL INCREASED BY 20,568 (8.33%). EMERGENCY SERVICES DECREASED BY 999 (1.18%). INFANTS INCREASED BY 281 (0.57%). ADULT W/O CHILD AT 140% INCREASED BY 17,465 (21.68%). MEDICAL W/SPEND DOWN DECREASED BY 155 (3.06%). SOBRA WOMAN AT 100% INCREASED BY 93 (2.70%). SOBRA CHILD AT 100% INCREASED BY 13,458 (8.75%). TRANSITIONAL MEDICAL DECREASED BY 764 (1.79%). 1931 AT 100% INCREASED BY 7,222 (9.85%). YATI INCREASED BY 34 (15.45%). ALL OTHER CATEGORIES INCREASED BY 3,102 (15.19%).

TANF SUMMARY

TABLES 1, 1A, 1B, & 1C: ARIZONA 1

	JUNE 2008							MAY 2008			CHANGE FROM JUNE 2007		
	FAMILIES (CASES)	PERSONS (RECIP.)	ADULTS	CHILDREN	TOTAL PAYMENTS	AVERAGE PAYMENT/ CASE	AVERAGE PAYMENT/ RECIP.	FAMILIES (CASES)	PERSONS (RECIP.)	TOTAL PAYMENTS	FAMILIES (CASES)	PERSONS (RECIP.)	TOTAL PAYMENTS
	ARIZONA	36,100	77,576	18,647	58,929	9,495,828	263.04	122.41	(318)	(734)	(89,923)	58	(451)
DISTRICT I													
MARICOPA	20,383	44,467	10,007	34,460	5,416,913	265.76	121.82	(135)	(271)	(30,916)	778	1,539	201,149
DISTRICT II													
PIMA	6,587	13,540	3,431	10,109	1,706,643	259.09	126.04	(154)	(362)	(42,159)	(362)	(1,101)	(115,335)
DISTRICT III													
APACHE	100	185	61	124	24,552	245.52	132.71	2	(4)	(8)	(21)	(82)	(6,597)
COCONINO	242	497	117	380	59,101	244.22	118.92	(1)	(11)	(687)	(20)	(46)	(6,789)
NAVAJO	1,295	3,208	915	2,293	359,771	277.82	112.15	4	10	(1,075)	(75)	(171)	(23,467)
YAVAPAI	696	1,364	306	1,058	169,473	243.50	124.25	10	17	527	71	162	14,821
DISTRICT IV													
LA PAZ	219	460	153	307	54,981	251.05	119.52	(13)	(41)	(2,976)	(21)	(52)	(7,890)
MOHAVE	1,352	2,832	809	2,023	348,517	257.78	123.06	(24)	(47)	(6,217)	(8)	15	(3,902)
YUMA	1,095	2,374	519	1,855	287,342	262.41	121.04	11	21	2,462	(100)	(253)	(28,884)
DISTRICT V													
GILA	672	1,347	452	895	172,262	256.34	127.89	16	23	5,377	(58)	(172)	(20,213)
PINAL	1,836	4,067	1,040	3,027	484,690	263.99	119.18	(36)	(90)	(11,574)	(81)	(212)	(21,472)
DISTRICT VI													
COCHISE	986	1,941	501	1,440	250,009	253.56	128.80	19	37	2,701	15	20	5,347
GRAHAM	344	661	203	458	85,184	247.63	128.87	(22)	(37)	(6,517)	(61)	(127)	(15,893)
GREENLEE	33	64	15	49	7,710	233.64	120.47	1	0	(260)	(18)	(45)	(6,163)
SANTA CRUZ	260	569	118	451	68,680	264.15	120.70	4	21	1,399	19	74	6,399

1/EXCLUDES: PRIOR MONTH NET TOTALS OF 1,546 CASES; 3,723 RECIPIENTS; \$292,780.
 1/GRANT DIVERSION TOTALS OF: 296 CASES;\$296,163.
 ZERO PAY TOTALS OF 1,067 CASES; 3,021 RECIPIENTS.

	CURRENT MO. CASES	CURRENT MO. RECIP.	CURRENT MO. DOLLARS	PRIOR MO. CASES	PRIOR MO. RECIP.	PRIOR MO. DOLLARS
PASQUAYAOUI	289	805	\$85,774	16	41	2,454
WM APACHE	689	1,849	\$207,872	17	60	3,245
SALT RIVER	75	266	\$23,002	4	17	915
SAN CARLOS	643	1,313	\$166,784	22	54	2,862
HOPAI	139	394	\$31,958	9	35	1,185
TOTAL	1,835	4,627	\$515,390	68	207	\$10,257

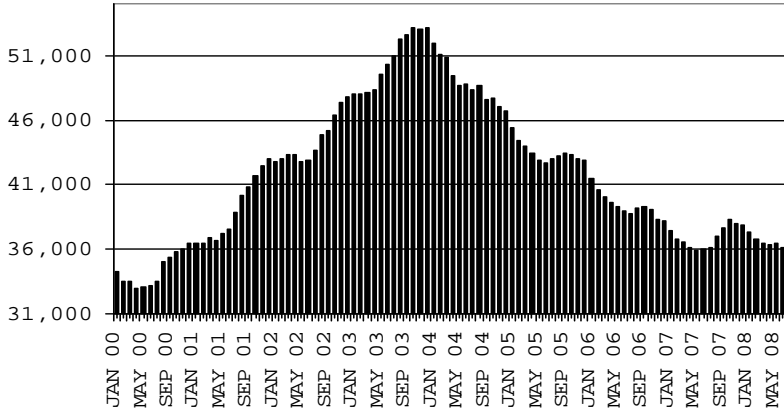
TANF SUMMARY

TABLES 1, 1A, 1B, & 1C

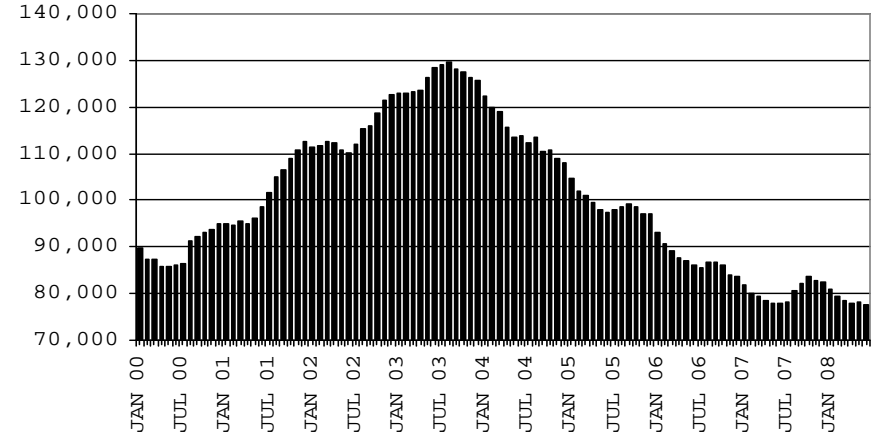
COMPARISON OF CASES, RECIPIENTS, PAYMENTS & AVERAGE PAYMENTS

FOR 2000, 2001, 2002, 2003, 2004, 2005, 2006, & 2007

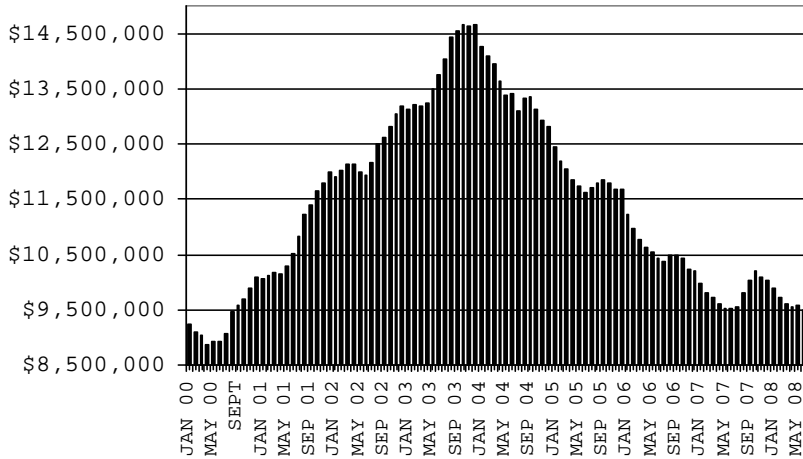
CASES



RECIPIENTS



PAYMENTS



AVERAGE PAYMENTS PER RECIPIENT

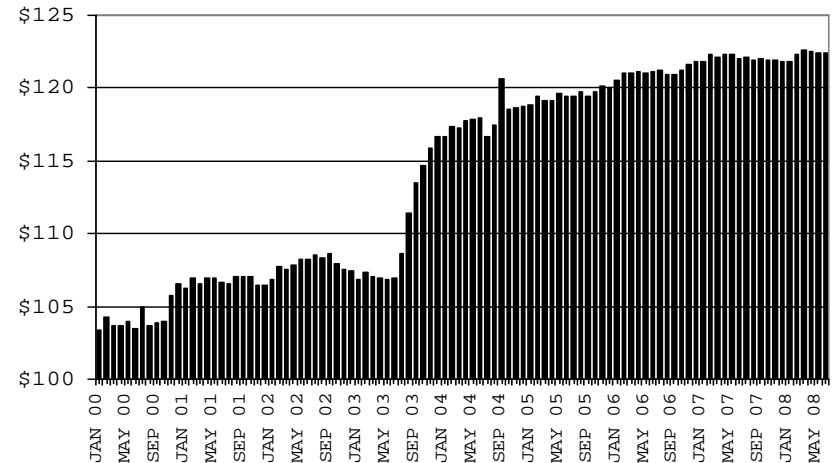


TABLE 1
CASH ASSISTANCE: ARIZONA 1.

	JUNE 2008							CHANGE FROM			MAY 2008			JUNE 2007			
	FAMILIES	(RECIP.)	ADULTS	CHILDREN	TOTAL	AVERAGE	AVERAGE	FAMILIES	PERSONS	TOTAL	FAMILIES	PERSONS	TOTAL	FAMILIES	PERSONS	TOTAL	
	(CASES)				PAYMENTS	PAYMENT/ CASE	PAYMENT/ RECIP.	(CASES)	(RECIP.)	PAYMENTS	(CASES)	(RECIP.)	PAYMENTS	(CASES)	(RECIP.)	PAYMENTS	
ARIZONA	34,617	73,317	17,073	56,244	9,168,839	264.87	125.06	(273)	(613)	(81,256)	(173)	(1,225)	(112,684)				
DISTRICT I																	
MARICOPA	19,650	42,474	9,364	33,110	5,264,712	267.92	123.95	(106)	(242)	(30,984)	646	1,148	152,580				
DISTRICT II																	
PIMA	6,324	12,769	3,132	9,637	1,649,493	260.83	129.18	(146)	(309)	(38,666)	(394)	(1,230)	(129,619)				
DISTRICT III	2,176	4,716	1,172	3,544	568,073	261.06	120.46	1	(22)	(1,002)	(85)	(294)	(33,551)				
APACHE	92	163	50	113	22,847	248.34	140.17	0	(8)	(199)	(19)	(78)	(6,687)				
COCONINO	228	462	105	357	56,876	249.46	123.11	(3)	(13)	69	(26)	(62)	(7,946)				
NAVAJO	1,196	2,817	742	2,075	324,220	271.09	115.09	(2)	(11)	(1,516)	(96)	(267)	(31,466)				
YAVAPAI	660	1,274	275	999	164,130	248.68	128.83	6	10	644	56	113	12,548				
DISTRICT IV	2,527	5,257	1,310	3,947	659,762	261.09	125.50	(19)	(45)	(5,972)	(147)	(354)	(45,455)				
LA PAZ	199	402	125	277	50,591	254.23	125.85	(11)	(36)	(2,567)	(25)	(62)	(8,737)				
MOHAVE	1,278	2,612	715	1,897	331,864	259.67	127.05	(17)	(17)	(4,411)	(28)	(45)	(7,615)				
YUMA	1,050	2,243	470	1,773	277,307	264.10	123.63	9	8	1,006	(94)	(247)	(29,103)				
DISTRICT V	2,385	5,033	1,319	3,714	625,892	262.43	124.36	(11)	(26)	(4,200)	(130)	(363)	(41,792)				
GILA	648	1,276	413	863	165,818	255.89	129.95	27	50	8,088	(35)	(104)	(14,623)				
PINAL	1,737	3,757	906	2,851	460,074	264.87	122.46	(38)	(76)	(12,288)	(95)	(259)	(27,169)				
DISTRICT VI	1,555	3,068	776	2,292	400,907	257.82	130.67	8	31	(432)	(63)	(132)	(14,847)				
COCHISE	945	1,837	467	1,370	243,450	257.62	132.53	26	48	4,630	(1)	(21)	3,029				
GRAHAM	326	616	182	434	82,187	252.11	133.42	(25)	(46)	(6,698)	(64)	(143)	(17,735)				
GREENLEE	31	61	14	47	7,610	245.48	124.75	1	0	(260)	(19)	(46)	(6,226)				
SANTA CRUZ	253	554	113	441	67,660	267.43	122.13	6	29	1,896	21	78	6,085				

1/EXCLUDES: PRIOR MONTH NET TOTALS OF: 800 CASES; 1,980 RECIPIENTS; \$222,458.
GRANT DIVERSION TOTALS OF: 296 CASES; \$296,163
ZERO PAY TOTALS OF 1,059 CASES; 2,989 RECIPIENTS.

	CURRENT MO. CASES	CURRENT MO. RECIP.	CURRENT MO. DOLLARS	PRIOR MO. CASES	PRIOR MO. RECIP.	PRIOR MO. DOLLARS
PASQUAYYAQUI	277	751	81,474	16	41	2,454
WM APACHE	626	1,568	182,301	8	18	1,295
SALT RIVER	75	266	23,002	4	17	915
SAN CARLOS	621	1,244	159,504	21	51	2,411
HOPI	139	394	31,958	9	35	1,185
TOTAL	1,738	4,223	478,239	58	162	8,260

CASES WITH GRANT UNDER \$100 (SEE TABLE 1B).

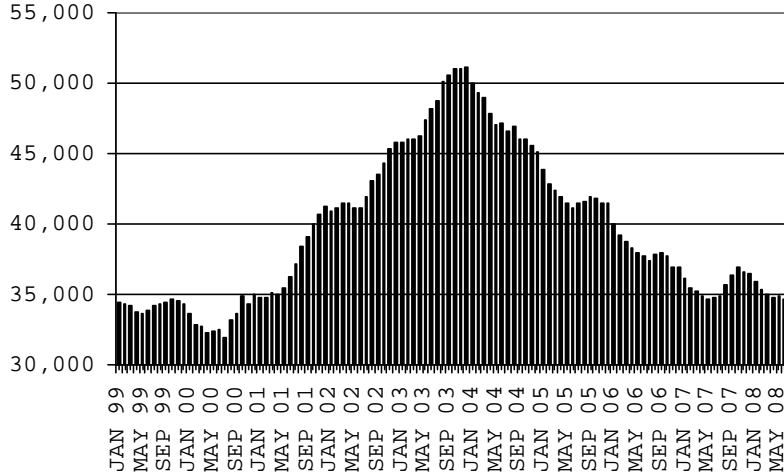
CHART 1

CASH ASSISTANCE PROGRAM

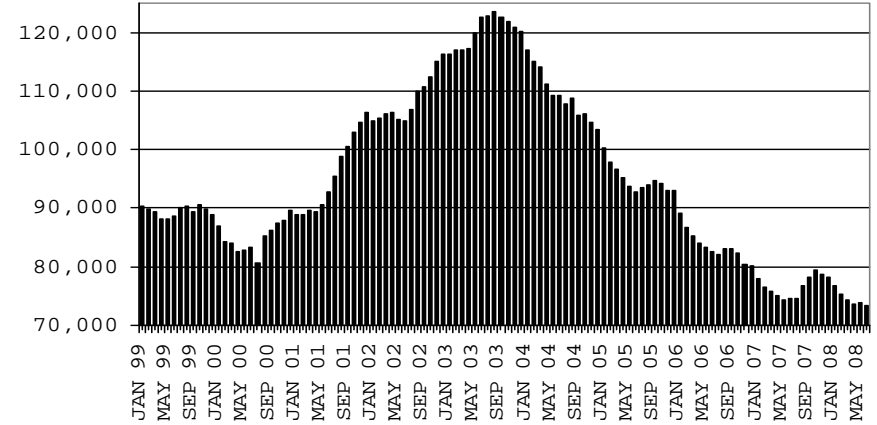
COMPARISON OF CASES, RECIPIENTS, PAYMENTS & AVERAGE PAYMENTS

FOR 1999, 2000, 2001, 2002, 2003, 2004, 2005, 2006 & 2007

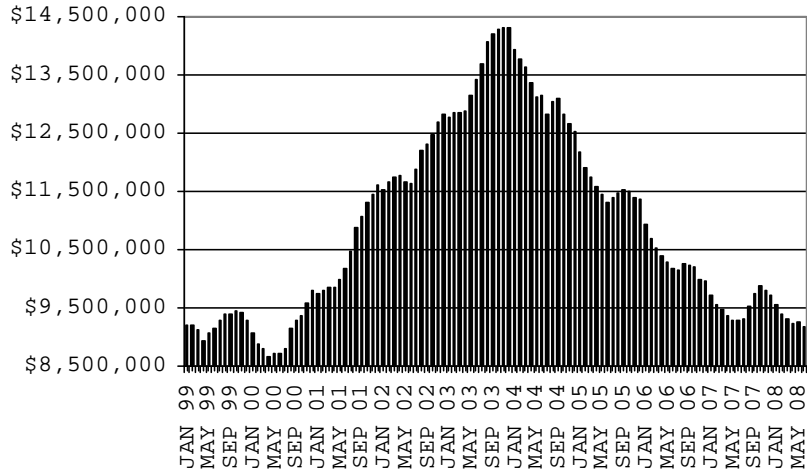
CASES



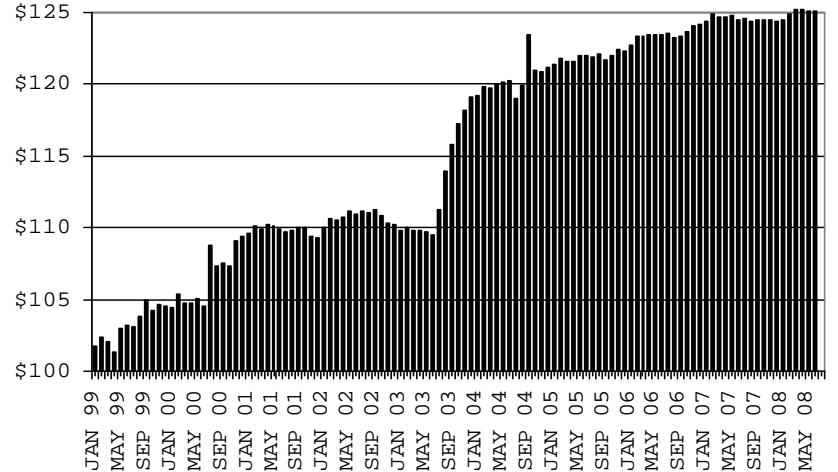
RECIPIENTS



PAYMENTS



AVERAGE PAYMENTS PER RECIPIENT



**TABLE 1A
CA-UP**

CASH ASSISTANCE UNEMPLOYED PARENT PROGRAM: ARIZONA 1

	JUNE 2008							CHANGE FROM			MAY 2008			JUNE 2007		
	FAMILIES (CASES)	PERSONS (RECIP.)	ADULTS	CHILDREN	TOTAL PAYMENTS	AVERAGE PAYMENT/ CASE	AVERAGE PAYMENT/ RECIP.	FAMILIES (CASES)	PERSONS (RECIP.)	TOTAL PAYMENTS	FAMILIES (CASES)	PERSONS (RECIP.)	TOTAL PAYMENTS			
ARIZONA	811	2,920	1,217	1,703	279,233	344.31	95.63	(8)	0	(5,330)	269	897	85,967			
DISTRICT I																
MARICOPA	386	1,299	487	812	128,031	331.69	98.56	10	59	2,635	169	499	50,755			
DISTRICT II																
PIMA	132	518	222	296	47,522	360.02	91.74	(8)	(24)	(2,315)	40	171	14,227			
DISTRICT III																
APACHE	4	16	8	8	1,327	331.75	82.94	1	3	2	1	4	202			
COCONINO	5	15	6	9	1,632	326.40	108.80	(3)	(11)	(1,148)	4	11	1,214			
NAVAJO	91	374	167	207	35,079	385.48	93.79	4	14	270	20	94	7,922			
YAVAPAI	13	43	18	25	3,940	303.08	91.63	0	(3)	(500)	8	28	2,321			
DISTRICT IV																
LA PAZ	11	41	19	22	3,665	333.18	89.39	(4)	(10)	(728)	2	7	551			
MOHAVE	34	142	64	78	13,776	405.18	97.01	(7)	(21)	(1,780)	4	23	2,902			
YUMA	25	90	37	53	8,565	342.60	95.17	5	17	1,640	2	11	712			
DISTRICT V																
GILA	19	59	36	23	6,194	326.00	104.98	(7)	(20)	(2,191)	(16)	(52)	(5,077)			
PINAL	66	241	118	123	21,627	327.68	89.74	5	11	614	20	59	5,706			
DISTRICT VI																
COCHISE	15	50	17	33	4,792	319.47	95.84	(4)	(12)	(1,424)	8	23	2,041			
GRAHAM	8	27	15	12	2,461	307.63	91.15	1	1	13	7	21	2,183			
GREENLEE	0	0	0	0	0	0.00	0.00	0	0	0	0	0	0			
SANTA CRUZ	2	5	3	2	622	311.00	124.40	(1)	(4)	(418)	0	(2)	308			

1/EXCLUDES: PRIOR MONTH NET TOTALS OF: 89 CASES; 363 RECIPIENTS; \$32,170.
GRANT DIVERSION TOTALS OF: 0 CASES; \$0.
ZERO PAY TOTALS OF 8 CASES; 32 RECIPIENTS.

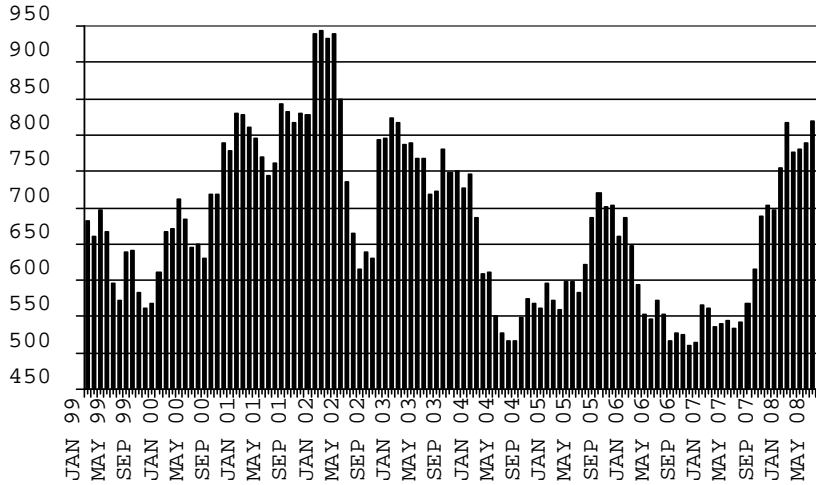
	CURRENT MO. CASES	CURRENT MO. RECIP.	CURRENT MO. DOLLARS	PRIOR MO. CASES	PRIOR MO. RECIP.	PRIOR MO. DOLLARS
PASQUAYAUQUI	12	54	4,300	0	0	0
WM APACHE	63	281	25,571	9	42	1,950
SALT RIVER	0	0	0	0	0	0
SAN CARLOS	22	69	7,280	1	3	451
HOPAI	0	0	0	0	0	0
TOTAL	97	404	37,151	10	45	1,997

CASES WITH GRANT UNDER \$100 (SEE TABLE 1C).

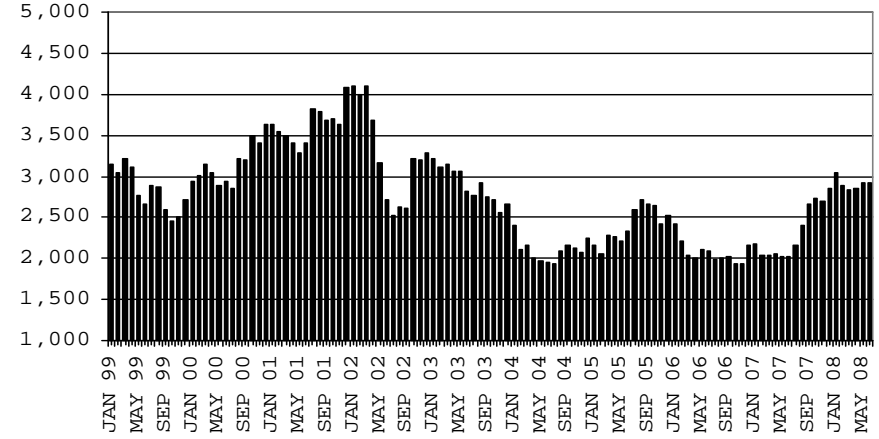
CHART 1A

CASH ASSISTANCE UNEMPLOYED PARENT PROGRAM COMPARISON OF CASES, RECIPIENTS, PAYMENTS & AVERAGE PAYMENTS FOR 1999, 2000, 2001, 2002, 2003, 2004, 2005, 2006 & 2007

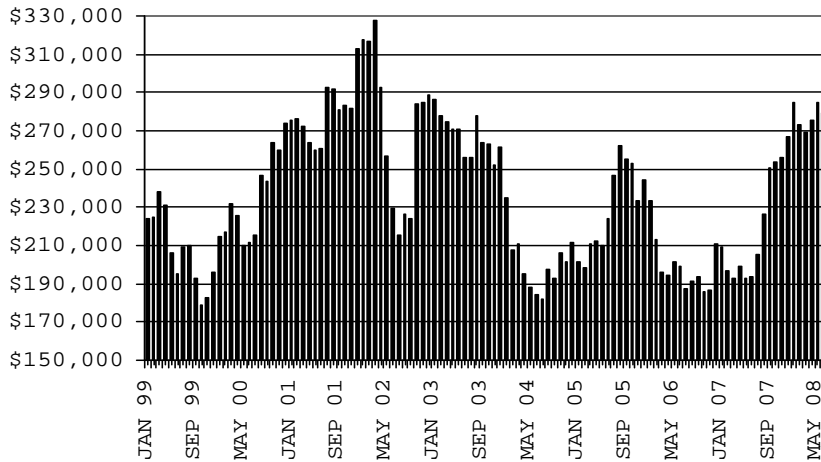
CASES



RECIPIENTS



PAYMENTS



AVERAGE PAYMENTS PER RECIPIENT

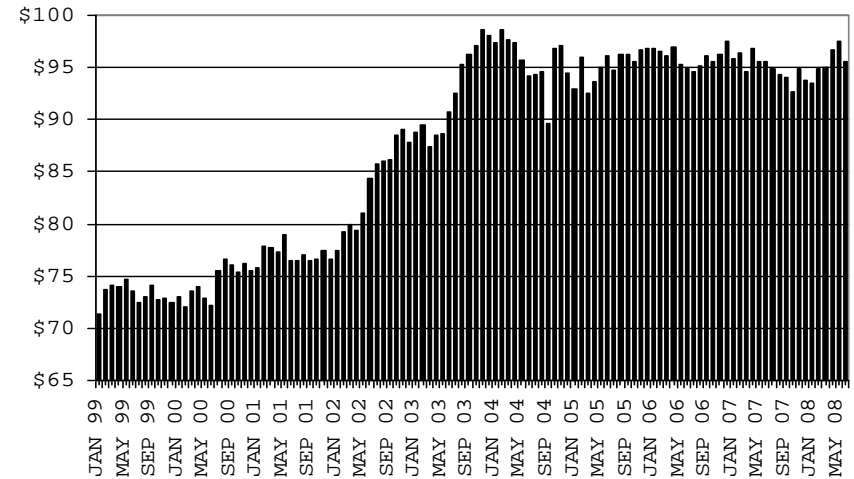


TABLE 1B 1/

CASH ASSISTANCE: ARIZONA
CASES WITH GRANT UNDER \$100

	JUNE 2008							CHANGE FROM					
								MAY 2008			JUNE 2007		
	FAMILIES (CASES)	PERSONS (RECIP.)	ADULTS	CHILDREN	TOTAL PAYMENTS	AVERAGE PAYMENT/ CASE	AVERAGE PAYMENT/ RECIP.	FAMILIES (CASES)	PERSONS (RECIP.)	TOTAL PAYMENTS	FAMILIES (CASES)	PERSONS (RECIP.)	TOTAL PAYMENTS
ARIZONA	661	1,302	341	961	47,108	71.27	36.18	(28)	(97)	(2,848)	(35)	(117)	(1,965)
DISTRICT I													
MARICOPA	340	669	146	523	23,775	69.93	35.54	(34)	(78)	(2,168)	(40)	(122)	(2,340)
DISTRICT II													
PIMA	129	247	75	172	9,517	73.78	38.53	2	(22)	(1,130)	(4)	(28)	330
DISTRICT III													
APACHE	4	6	3	3	378	94.50	63.00	1	1	189	(2)	(6)	(28)
COCONINO	9	20	6	14	593	65.89	29.65	5	13	392	2	5	(57)
NAVAJO	8	17	6	11	472	59.00	27.76	2	7	171	1	2	77
YAVAPAI	23	47	13	34	1,403	61.00	29.85	5	13	416	7	21	(48)
DISTRICT IV													
LA PAZ	9	17	9	8	725	80.56	42.65	2	5	319	2	3	296
MOHAVE	38	72	26	46	2,735	71.97	37.99	(1)	(12)	(71)	15	34	717
YUMA	20	41	12	29	1,470	73.50	35.85	(3)	(4)	(184)	(8)	(17)	(493)
DISTRICT V													
GILA	5	12	3	9	250	50.00	20.83	(3)	(4)	(515)	(7)	(16)	(513)
PINAL	33	69	16	53	2,989	90.58	43.32	(2)	(21)	149	(6)	(12)	(9)
DISTRICT VI													
COCHISE	26	54	17	37	1,767	67.96	32.72	(3)	1	(505)	8	18	277
GRAHAM	10	18	6	12	536	53.60	29.78	2	8	168	(2)	2	(243)
GREENLEE	2	3	1	2	100	50.00	33.33	0	0	0	1	1	63
SANTA CRUZ	5	10	2	8	398	79.60	39.80	(1)	(4)	(79)	(2)	(2)	6

EXCLUDES: PRIOR MONTH NET TOTALS OF 630 CASES; 1,291 RECIPIENTS; \$36,763.

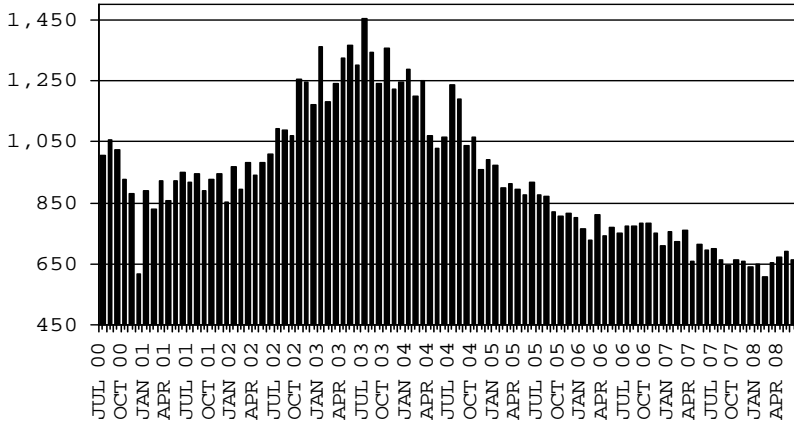
CHART 1B

CASH ASSISTANCE PROGRAM CASES WITH GRANT UNDER \$100

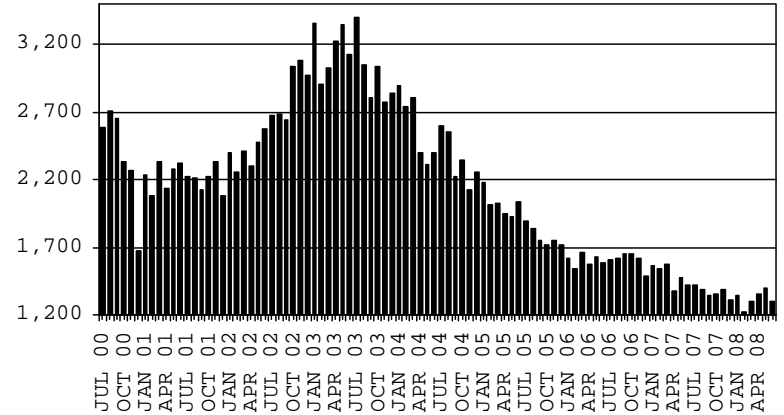
COMPARISON OF CASES, RECIPIENTS, PAYMENTS & AVERAGE PAYMENTS

FOR 2000, 2001, 2002, 2003, 2004, 2005, 2006 & 2007

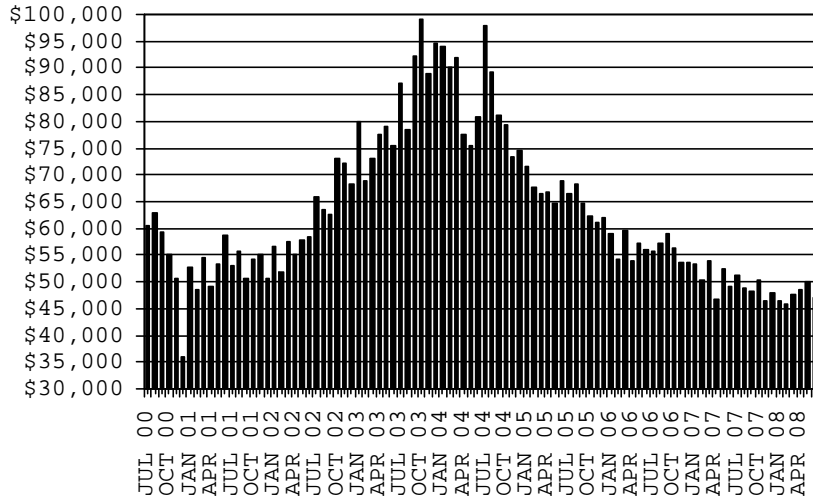
CASES



RECIPIENTS



PAYMENTS



AVERAGE PAYMENTS PER RECIPIENT

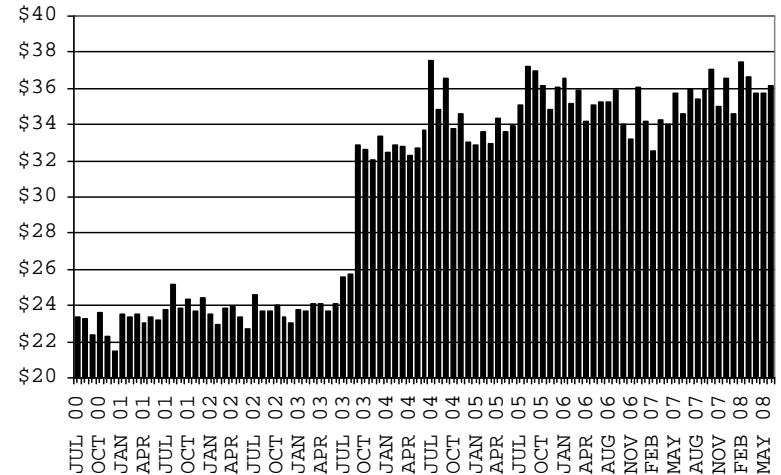


TABLE 1C 1/

CASH ASSISTANCE UNEMPLOYED PARENT PROGRAM: ARIZONA
 CASES WITH GRANT UNDER \$100

	JUNE 2008							CHANGE FROM			JUNE 2007		
	FAMILIES (CASES)	PERSONS (RECIP.)	ADULTS	CHILDREN	TOTAL PAYMENTS	AVERAGE	AVERAGE	FAMILIES (CASES)	PERSONS (RECIP.)	TOTAL PAYMENTS	FAMILIES (CASES)	PERSONS (RECIP.)	TOTAL PAYMENTS
						PAYMENT/ CASE	PAYMENT/ RECIP.						
ARIZONA	11	37	16	21	648	58.91	17.51	(9)	(24)	(489)	(3)	(6)	(207)
DISTRICT I													
MARICOPA	7	25	10	15	395	56.43	15.80	(5)	(10)	(399)	3	14	154
DISTRICT II													
PIMA	2	6	2	4	111	55.50	18.50	(2)	(7)	(48)	(4)	(14)	(273)
DISTRICT III													
APACHE	0	0	0	0	0	0.00	0.00	0	0	0	(1)	(2)	(84)
COCONINO	0	0	0	0	0	0.00	0.00	0	0	0	0	0	0
NAVAJO	0	0	0	0	0	0.00	0.00	0	0	0	0	0	0
YAVAPAI	0	0	0	0	0	0.00	0.00	(1)	(3)	(33)	0	0	0
DISTRICT IV													
LA PAZ	0	0	0	0	0	0.00	0.00	0	0	0	0	0	0
MOHAVE	2	6	4	2	142	71.00	23.67	1	3	45	1	3	94
YUMA	0	0	0	0	0	0.00	0.00	0	0	0	0	0	0
DISTRICT V													
GILA	0	0	0	0	0	0.00	0.00	(1)	(3)	(5)	0	0	0
PINAL	0	0	0	0	0	0.00	0.00	(1)	(4)	(49)	0	0	0
DISTRICT VI													
COCHISE	0	0	0	0	0	0.00	0.00	0	0	0	0	0	0
GRAHAM	0	0	0	0	0	0.00	0.00	0	0	0	(2)	(7)	(98)
GREENLEE	0	0	0	0	0	0.00	0.00	0	0	0	0	0	0
SANTA CRUZ	0	0	0	0	0	0.00	0.00	0	0	0	0	0	0

EXCLUDES: PRIOR MONTH NET TOTALS OF 27 CASES; 89 RECIPIENTS; \$1,389.

CHART 1C

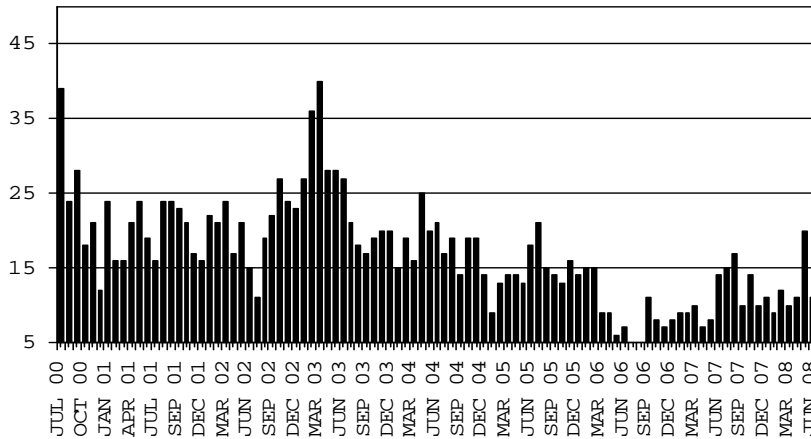
CASH ASSISTANCE UNEMPLOYED PARENT PROGRAM

CASES WITH GRANT UNDER \$100

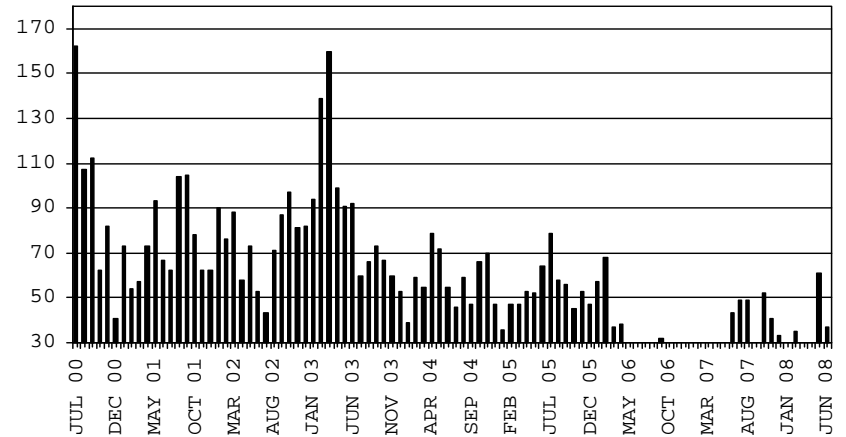
COMPARISON OF CASES, RECIPIENTS, PAYMENTS & AVERAGE PAYMENTS

FOR 2000, 2001, 2002, 2003, 2004, 2005, 2006 & 2007

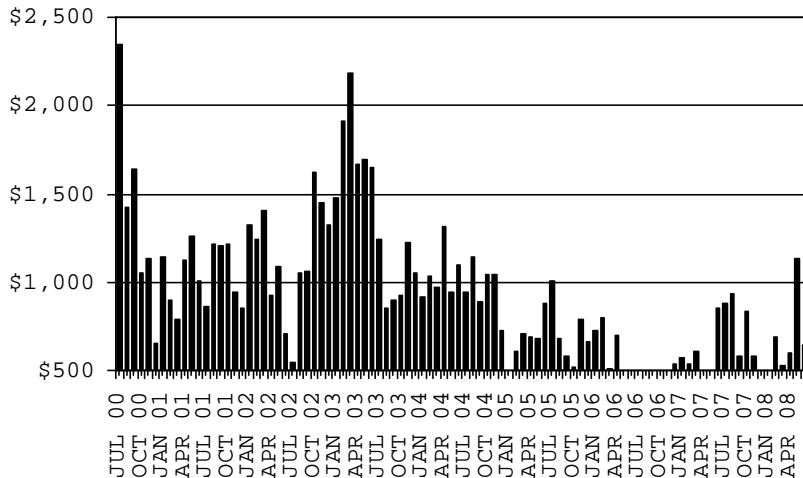
CASES



RECIPIENTS



PAYMENTS



AVERAGE PAYMENTS PER RECIPIENT

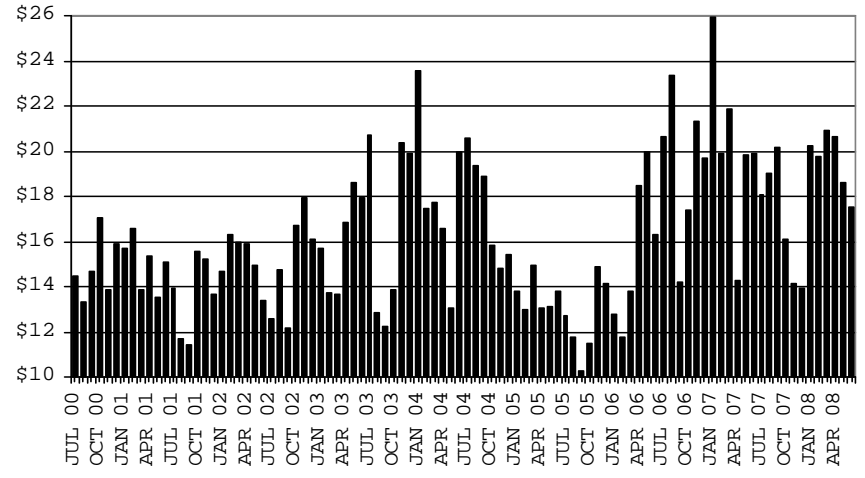


TABLE 2
GENERAL ASSISTANCE: ARIZONA 1,

	CHANGE FROM										
	JUNE 2008					MAY 2008			JUNE 2007		
	NUMBER OF CASES	PERSONS (RECIP.)	TOTAL PAYMENTS	AVERAGE PAYMENT/ CASE	AVERAGE PAYMENT/ RECIP.	NUMBER OF CASES	PERSONS (RECIP.)	TOTAL PAYMENTS	NUMBER OF CASES	PERSONS (RECIP.)	TOTAL PAYMENTS
ARIZONA	1,352	1,355	205,275	151.83	151.49	(52)	(52)	(7,950)	40	33	5,147
DISTRICT I											
MARICOPA	547	548	83,876	153.34	153.06	(19)	(19)	(2,665)	(4)	(4)	(1,014)
DISTRICT II											
PIMA	333	333	49,779	149.49	149.49	(30)	(30)	(4,701)	(4)	(6)	(157)
DISTRICT III											
APACHE	10	11	1,725	172.50	156.82	(2)	(2)	(281)	0	(1)	68
COCONINO	23	23	3,314	144.09	144.09	1	1	28	2	1	62
NAVAJO	34	34	5,430	159.71	159.71	(3)	(3)	(386)	5	5	738
YAVAPAI	61	61	9,002	147.57	147.57	1	1	355	(10)	(11)	(1,966)
DISTRICT IV											
LA PAZ	8	8	1,120	140.00	140.00	(2)	(2)	(197)	(3)	(3)	(523)
MOHAVE	112	112	17,296	154.43	154.43	3	3	536	39	38	5,933
YUMA	42	42	5,403	128.64	128.64	6	6	548	5	4	420
DISTRICT V											
GILA	117	118	17,865	152.69	151.40	(3)	(3)	(300)	5	5	593
PINAL	20	20	2,893	144.65	144.65	(4)	(4)	(609)	1	1	61
PINAL	97	98	14,972	154.35	152.78	1	1	309	4	4	532
DISTRICT VI											
COCHISE	65	65	10,465	161.00	161.00	(4)	(4)	(887)	5	5	993
GRAHAM	52	52	8,346	160.50	160.50	4	4	497	10	10	1,793
GREENLEE	8	8	1,384	173.00	173.00	(6)	(6)	(1,038)	(6)	(6)	(908)
SANTA CRUZ	2	2	281	140.50	140.50	(1)	(1)	(173)	1	1	108
SANTA CRUZ	3	3	454	151.33	151.33	(1)	(1)	(173)	0	0	0

1/EXCLUDES: PRIOR MONTH NET TOTALS OF : 174 CASES; 174 RECIPIENTS; \$41,343.
REFUGEE RESETTLEMENT PROGRAM: 105 CASES; 152 RECIPIENTS; \$26,919.

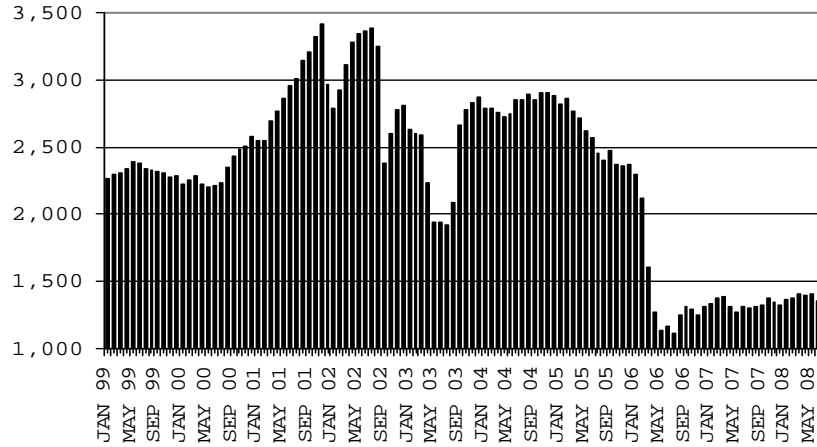
CHART 2

GENERAL ASSISTANCE PROGRAM

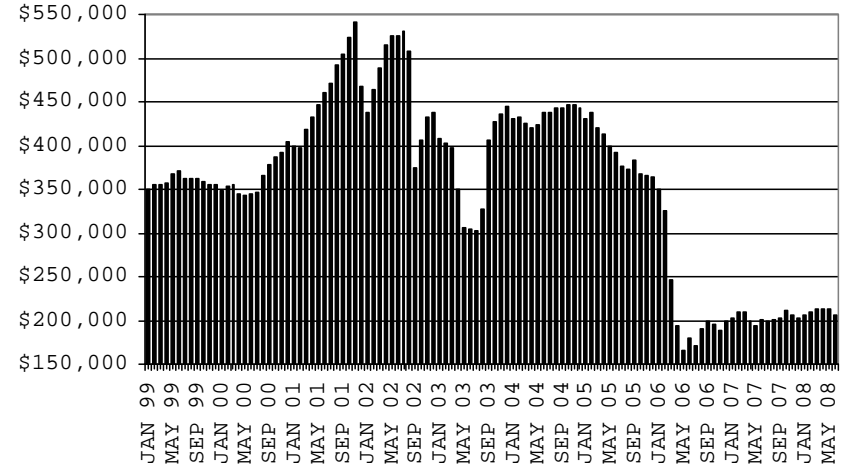
COMPARISON OF CASES, PAYMENTS & AVERAGE PAYMENTS

FOR 1999, 2000, 2001, 2002, 2003, 2004, 2005, 2006 & 2007

CASES



PAYMENTS



AVERAGE PAYMENT PER CASE

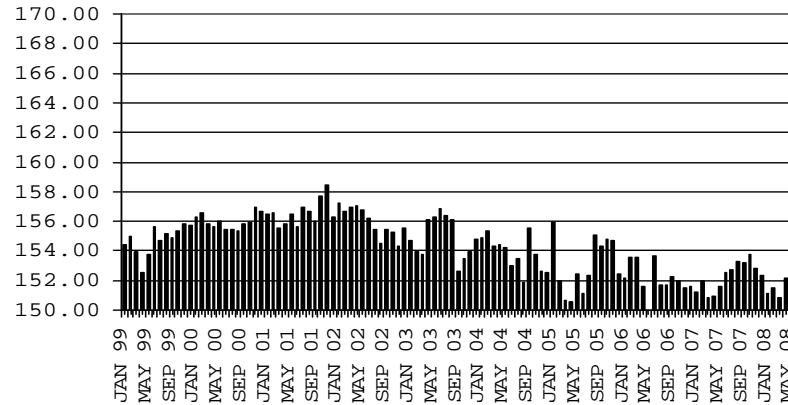


TABLE 4

TUBERCULOSIS CONTROL: ARIZONA 1/

	JUNE 2008					CHANGE FROM					
						MAY 2008			JUNE 2007		
	NUMBER OF CASES	PERSONS (RECIP.)	TOTAL PAYMENTS	AVERAGE PAYMENT/ CASE	AVERAGE PAYMENT/ RECIP.	NUMBER OF CASES	PERSONS (RECIP.)	TOTAL PAYMENTS	NUMBER OF CASES	PERSONS (RECIP.)	TOTAL PAYMENTS
ARIZONA	7	7	821	117.29	117.29	(3)	(3)	(389)	(3)	(3)	(389)
DISTRICT I											
MARICOPA	6	6	713	118.83	118.83	(3)	(3)	(389)	(4)	(4)	(497)
DISTRICT II											
PIMA	0	0	0	0.00	0.00	0	0	0	0	0	0
DISTRICT III	1	1	108	108.00	108.00	0	0	0	1	1	108
APACHE	0	0	0	0.00	0.00	0	0	0	0	0	0
COCONINO	0	0	0	0.00	0.00	0	0	0	0	0	0
NAVAJO	0	0	0	0.00	0.00	0	0	0	0	0	0
YAVAPAI	1	1	108	108.00	108.00	0	0	0	1	1	108
DISTRICT IV	0	0	0	0.00	0.00	0	0	0	0	0	0
LA PAZ	0	0	0	0.00	0.00	0	0	0	0	0	0
MOHAVE	0	0	0	0.00	0.00	0	0	0	0	0	0
YUMA	0	0	0	0.00	0.00	0	0	0	0	0	0
DISTRICT V	0	0	0	0.00	0.00	0	0	0	0	0	0
GILA	0	0	0	0.00	0.00	0	0	0	0	0	0
PINAL	0	0	0	0.00	0.00	0	0	0	0	0	0
DISTRICT VI	0	0	0	0.00	0.00	0	0	0	0	0	0
COCHISE	0	0	0	0.00	0.00	0	0	0	0	0	0
GRAHAM	0	0	0	0.00	0.00	0	0	0	0	0	0
GREENLEE	0	0	0	0.00	0.00	0	0	0	0	0	0
SANTA CRUZ	0	0	0	0.00	0.00	0	0	0	0	0	0

1/EXCLUDES: PRIOR MONTH NET TOTALS OF : 0 CASES; 0 RECIPIENTS; \$0.

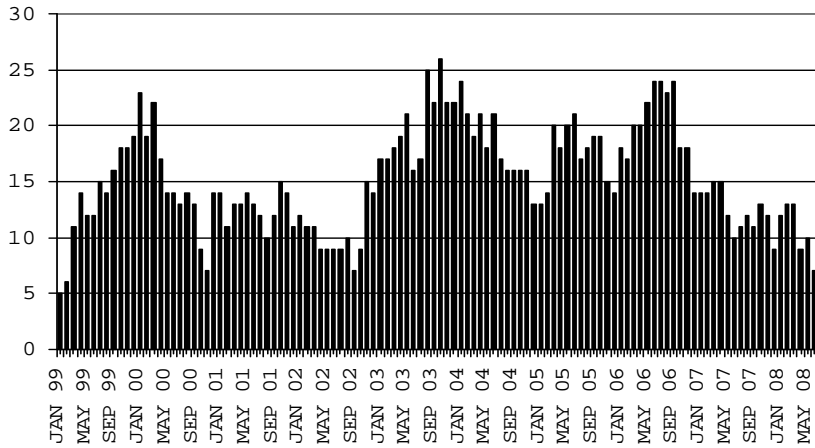
CHART 4

TUBERCULOSIS CONTROL PROGRAM

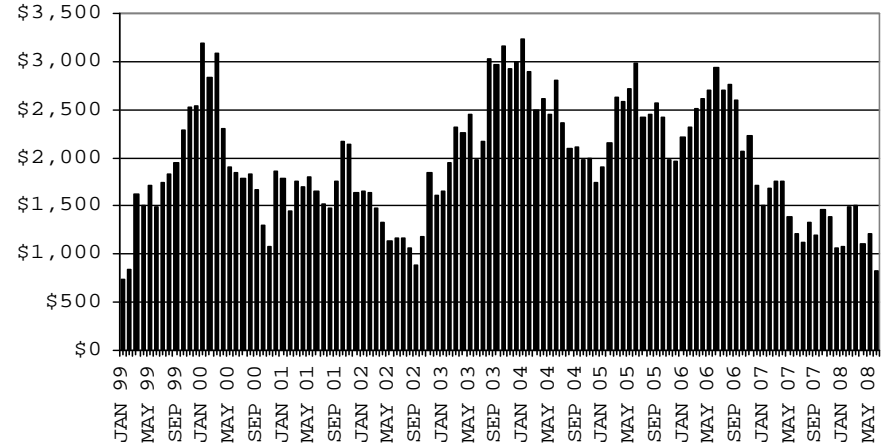
COMPARISON OF CASES, PAYMENTS & AVERAGE PAYMENTS

FOR 1999, 2000, 2001, 2002, 2003, 2004, 2005, 2006 & 2007

CASES



PAYMENTS



AVERAGE PAYMENT PER CASE

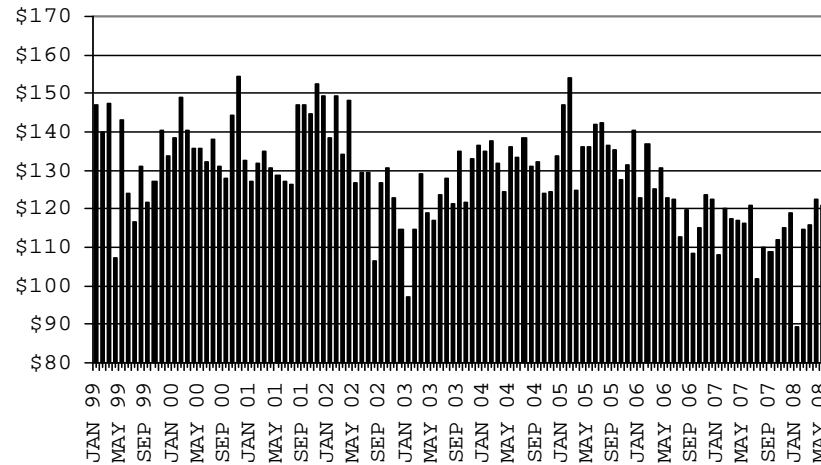


TABLE 6

FOOD STAMP PROGRAM: ARIZONA 1/

	CHANGE FROM										
	JUNE 2008					MAY 2008			JUNE 2007		
	HOUSEHOLDS	PERSONS	TOTAL COUPON ISSUANCE	AVERAGE ALLOT./ HOUSEHOLD	AVERAGE ALLOT./ PERSON	HOUSEHOLDS	PERSONS	TOTAL COUPON ISSUANCE	HOUSEHOLDS	PERSONS	TOTAL COUPON ISSUANCE
ARIZONA	266,671	645,799	64,881,161	243.30	100.47	2,972	7,019	780,908	41,366	94,334	11,192,400
DISTRICT I											
MARICOPA	134,570	327,767	33,593,007	249.63	102.49	1,784	4,238	469,553	22,934	55,029	6,468,255
DISTRICT II											
PIMA	47,632	107,857	10,852,555	227.84	100.62	488	840	128,442	7,580	15,295	1,820,423
DISTRICT III											
APACHE	6,489	19,626	1,931,774	297.70	98.43	(13)	(82)	11,270	356	469	165,197
COCONINO	5,972	17,132	1,623,197	271.80	94.75	(58)	(157)	(18,143)	861	1,922	237,024
NAVAJO	9,972	27,768	2,669,208	267.67	96.13	13	74	(9,892)	789	1,947	263,865
YAVAPAI	7,596	15,375	1,499,489	197.41	97.53	16	28	5,663	1,447	3,041	312,031
DISTRICT IV											
LA PAZ	1,339	2,908	299,187	223.44	102.88	10	24	1,341	72	76	19,139
MOHAVE	12,456	25,989	2,651,144	212.84	102.01	95	291	25,917	2,334	4,467	507,301
YUMA	10,787	29,120	2,651,728	245.83	91.06	326	973	72,034	1,134	2,823	288,851
DISTRICT V											
GILA	3,697	8,530	858,415	232.19	100.63	(5)	(23)	(1,202)	354	664	86,460
PINAL	13,545	34,267	3,453,686	254.98	100.79	177	479	51,360	2,229	5,882	680,183
DISTRICT VI											
COCHISE	7,507	16,563	1,604,806	213.77	96.89	185	410	41,184	906	1,764	220,616
GRAHAM	2,079	4,917	473,399	227.71	96.28	(149)	(367)	(31,460)	46	74	22,941
GREENLEE	218	452	43,768	200.77	96.83	(23)	(44)	(5,064)	(45)	(102)	(8,889)
SANTA CRUZ	2,812	7,528	675,798	240.33	89.77	126	335	39,905	369	983	109,003

1/EXCLUDES: PRIOR MONTH NET TOTALS OF : 7,812 CASES; 20,185 RECIPIENTS; \$941,555.
 AGED CANCELATIONS: 0 CASES; 0 RECIPIENTS; 0.
 FS COUPON CONVERSIONS: 0 CASES; 0 RECIPIENTS; \$0.
 FS REINSTATED: 0 CASES; \$0.
 FS ZERO PAY: 8,400 CASES; 33,136 RECIPIENTS.

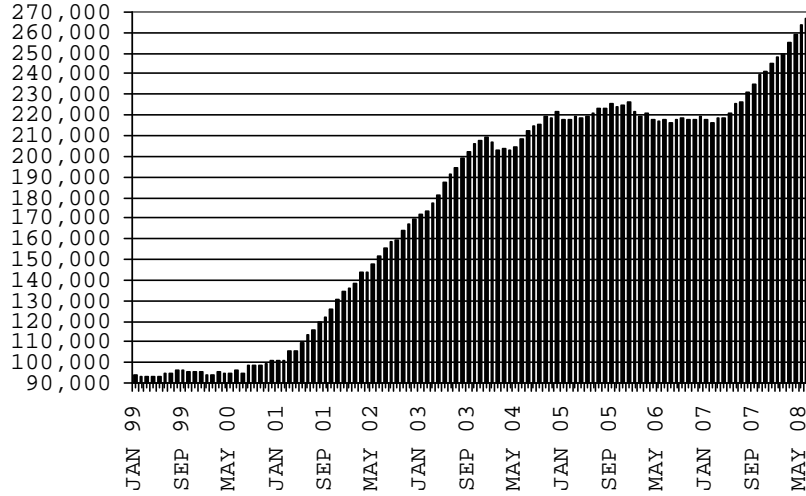
CHART 6

FOOD STAMPS PROGRAM

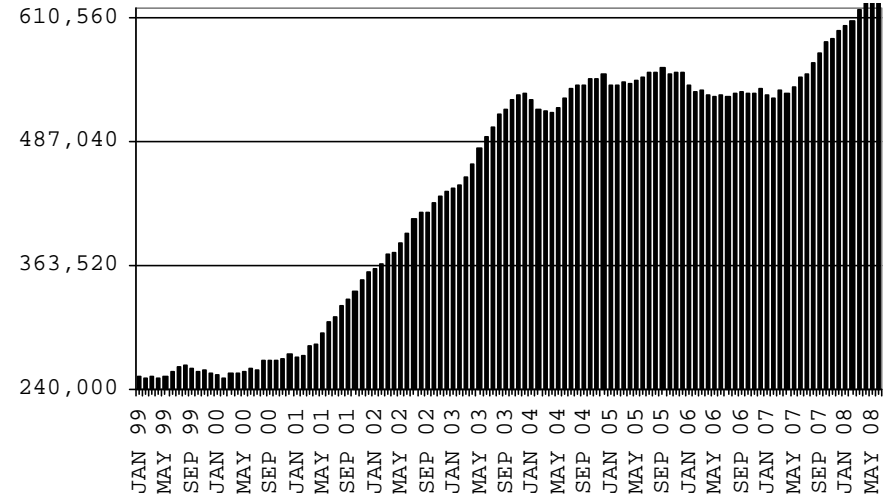
COMPARISON OF HOUSEHOLDS, RECIPIENTS, PAYMENTS & AVERAGE PAYMENTS

FOR 1999, 2000, 2001, 2002, 2003, 2004, 2005, 2006 & 2007

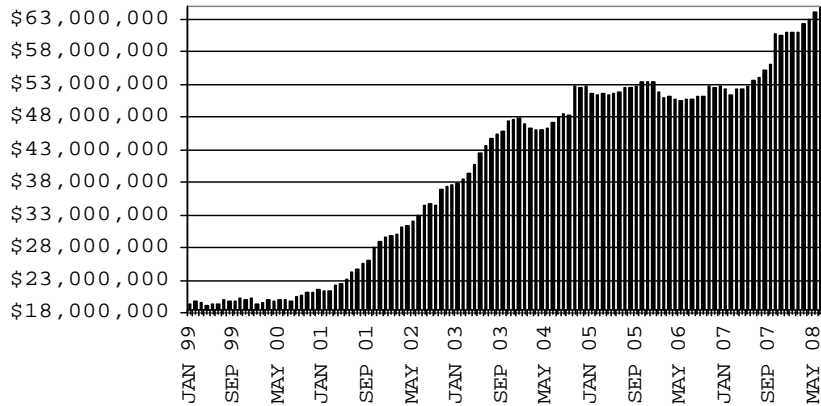
HOUSEHOLDS



RECIPIENTS



TOTAL PAYMENTS



AVERAGE PAYMENT PER HOUSEHOLD

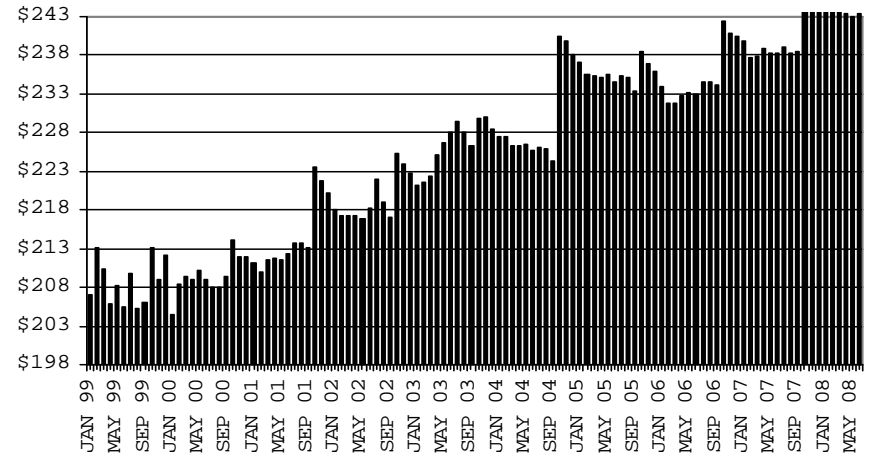


TABLE 7A
MEDICAL ASSISTANCE PROGRAM
RECIPIENTS

JUNE 2008

	SOBRA WOMAN 133% FPL	SOBRA CHILD	ADULT W/O CHILD 100% FPL	FOSTER CARE	1931 36% FPL	FEDERAL EMERGENCY SERVICES	INFANTS	ADULT W/O CHILD 40% FPL	MEDICAL W/SPEND DOWN	SOBRA WOMAN 100% FPL	SOBRA CHILD 100% FPL	TRANSITIONAL MEDICAL T1 - T4	1931 100% FPL	YATI	OTHER	TOTAL CASES
ARIZONA	11,560	62,520	39,468	10,258	267,572	83,395	49,775	98,006	4,914	3,532	167,343	41,819	80,520	254	23,527	944,463
DISTRICT I																
MARICOPA	6,046	34,969	17,052	5,136	141,979	64,469	29,924	44,043	2,622	1,796	93,940	20,296	37,531	133	11,673	511,609
DISTRICT II																
PIMA	1,784	9,650	7,834	2,895	41,178	10,351	6,971	18,362	714	560	26,088	7,207	14,555	71	4,181	152,401
DISTRICT III																
APACHE	236	1,478	838	44	10,490	92	953	4,286	46	77	3,566	970	2,169	2	384	25,631
COCONINO	337	1,410	1,179	120	7,184	548	1,174	3,073	83	96	3,750	1,237	2,215	6	385	22,797
NAVAJO	350	2,092	1,316	120	11,022	312	1,439	4,877	110	116	4,570	1,442	2,946	3	559	31,274
YAVAPAI	403	1,687	1,759	453	5,547	1,524	1,294	3,037	205	108	4,104	1,359	2,547	12	982	25,021
DISTRICT IV																
LA PAZ	45	217	206	15	1,121	170	181	566	26	22	631	181	319	0	143	3,843
MOHAVE	494	2,086	2,054	256	9,680	851	1,573	5,115	325	171	6,504	2,035	3,816	1	1,254	36,215
YUMA	582	2,465	2,375	264	10,332	2,049	1,854	3,359	231	216	8,397	2,308	5,208	1	1,215	40,856
DISTRICT V																
GILA	156	707	564	78	3,846	138	478	2,024	76	32	1,584	557	998	1	286	11,525
PINAL	622	3,568	1,850	518	13,987	1,671	2,198	5,147	271	166	7,268	2,021	3,911	16	1,141	44,355
DISTRICT VI																
COCHISE	225	1,109	1,339	250	6,152	619	861	2,422	129	84	3,377	1,097	2,171	7	754	20,596
GRAHAM	140	457	401	65	2,084	69	384	875	28	24	1,065	400	687	1	135	6,815
GREENLEE	17	26	35	11	266	7	57	116	7	7	99	51	54	0	24	777
SANTA CRUZ	123	599	666	33	2,704	525	434	704	41	57	2,400	658	1,393	0	411	10,748

TABLE 7B

MEDICAL ASSISTANCE PROGRAM

RECIPIENTS

CHANGE FROM

MAY 2008

	SOBRA WOMAN 133% FPL	SOBRA CHILD	ADULT W/O CHILD 100% FPL	FOSTER CARE	1931 36% FPL	FEDERAL EMERGENCY SERVICES	INFANTS	ADULT W/O CHILD 40% FPL	MEDICAL W/SPEND DOWN	SOBRA WOMAN 100% FPL	SOBRA CHILD 100% FPL	TRANSITIONAL MEDICAL T1 - T4	1931 100% FPL	YATI	OTHER	TOTAL CASES
ARIZONA	(122)	725	23	119	440	(794)	(288)	478	(110)	12	(71)	(47)	(168)	4	638	839
DISTRICT I																
MARICOPA	30	185	(50)	63	322	(628)	(160)	382	(100)	23	(51)	232	(280)	4	358	330
DISTRICT II																
PIMA	3	75	20	39	(5)	(84)	(38)	123	(15)	(6)	(155)	274	(123)	(3)	92	197
DISTRICT III	(57)	138	(41)	(4)	(163)	(54)	(64)	(56)	(17)	(10)	(230)	328	(55)	0	109	(176)
APACHE	(12)	89	(25)	1	143	(7)	0	27	4	3	(137)	4	(29)	0	23	84
COCONINO	(20)	13	(31)	1	(111)	(6)	(26)	(22)	(13)	(3)	40	142	4	(1)	31	(2)
NAVAJO	(14)	79	18	(3)	(147)	(15)	(7)	(42)	(16)	(9)	(44)	143	19	1	20	(17)
YAVAPAI	(11)	(43)	(3)	(3)	(48)	(26)	(31)	(19)	8	(1)	(89)	39	(49)	0	35	(241)
DISTRICT IV	(53)	134	82	14	320	34	(19)	52	14	19	451	(881)	352	(2)	25	542
LA PAZ	5	11	(4)	0	(6)	(4)	1	21	(12)	2	(16)	8	(14)	(1)	2	(7)
MOHAVE	(54)	12	(22)	7	25	(6)	(14)	(10)	(1)	3	29	95	38	(2)	28	128
YUMA	(4)	111	108	7	301	44	(6)	41	27	14	438	(984)	328	1	(5)	421
DISTRICT V	(10)	31	16	0	(6)	(27)	(10)	(20)	21	(8)	126	30	40	3	22	208
GILA	8	20	12	(1)	2	3	5	26	(20)	(2)	(28)	19	(4)	0	6	46
PINAL	(18)	11	4	1	(8)	(30)	(15)	(46)	41	(6)	154	11	44	3	16	162
DISTRICT VI	(35)	162	(4)	7	(28)	(35)	3	(3)	(13)	(6)	(212)	(30)	(102)	2	32	(262)
COCHISE	(34)	74	(12)	2	24	(21)	8	(22)	(6)	(8)	(159)	42	(64)	1	7	(168)
GRAHAM	3	41	9	2	35	2	5	2	2	1	(65)	(4)	(28)	1	5	11
GREENLEE	(6)	(4)	0	0	(20)	(2)	1	1	1	3	(11)	2	(9)	0	0	(44)
SANTA CRUZ	2	51	(1)	3	(67)	(14)	(11)	16	(10)	(2)	23	(70)	(1)	0	20	(61)

TABLE 7C
MEDICAL ASSISTANCE PROGRAM
RECIPIENTS

CHANGE FROM

JUNE 2007

	SOBRA WOMAN 133% FPL	SOBRA CHILD	ADULT W/O CHILD 100% FPL	FOSTER CARE	1931 36% FPL	FEDERAL EMERGENCY SERVICES	INFANTS	ADULT W/O CHILD 40% FPL	MEDICAL W/SPEND DOWN	SOBRA WOMAN 100% FPL	SOBRA CHILD 100% FPL	TRANSITIONAL MEDICAL T1 - T4	3E 1931 100% FPL	YATI	OTHER	TOTAL CASES
ARIZONA	231	1,977	3,355	1,178	20,568	(999)	281	17,465	(155)	93	13,458	(764)	7,222	34	3,102	67,046
DISTRICT I																
MARICOPA	270	1,899	1,805	582	15,235	(306)	74	9,459	(188)	60	9,597	(586)	4,036	21	1,603	43,561
DISTRICT II																
PIMA	37	348	717	355	2,469	(163)	148	3,812	88	29	1,700	25	1,380	4	578	11,527
DISTRICT III																
APACHE	(20)	6	(97)	5	120	(11)	8	216	(14)	(4)	(273)	(234)	(149)	2	65	(380)
COCONINO	(66)	40	46	3	276	12	28	315	(14)	6	273	(70)	183	(3)	55	1,084
NAVAJO	(5)	(109)	(20)	10	178	(6)	127	408	(79)	(27)	191	57	193	(1)	67	984
YAVAPAI	(29)	(79)	175	83	404	(22)	(102)	571	(89)	0	317	2	276	0	133	1,640
DISTRICT IV																
LA PAZ	1	(28)	11	(3)	(39)	(26)	14	25	7	2	(5)	15	(23)	0	10	(39)
MOHAVE	11	(48)	209	25	786	(95)	(47)	1,165	48	28	557	461	352	0	176	3,628
YUMA	24	(52)	129	6	82	(159)	(33)	329	18	15	383	(89)	321	0	115	1,089
DISTRICT V																
GILA	5	(54)	59	(4)	36	(20)	6	237	(9)	(3)	34	27	51	(2)	46	409
PINAL	26	63	189	108	781	(128)	17	551	57	(23)	763	(154)	535	10	113	2,908
DISTRICT VI																
COCHISE	(39)	6	97	3	122	(66)	29	275	20	3	(116)	(29)	69	3	75	452
GRAHAM	3	21	50	4	34	12	11	56	(2)	(10)	0	(179)	38	0	16	54
GREENLEE	(13)	(12)	(11)	0	(56)	0	1	5	0	5	(35)	(5)	(21)	0	2	(140)
SANTA CRUZ	26	(24)	(4)	1	140	(21)	0	41	2	12	72	(5)	(19)	0	48	269

CHART 7

MEDICAL ASSISTANCE PROGRAM COMPARISON OF RECIPIENTS FOR 1999, 2000, 2001, 2002, 2003, 2004, 2005, 2006 & 2007

TOTAL RECIPIENTS

