



State of Arizona

Department of Economic Security

Family Assistance Administration

Statistical Bulletin

August, 2008

Phone: (602) 542-3678

<http://www.azdes.gov/faa/Statistics.asp>

**** STATISTICAL BULLETIN ****
ARIZONA DEPARTMENT OF ECONOMIC SECURITY
FAMILY ASSISTANCE ADMINISTRATION
BOX 6123, PHOENIX, ARIZONA 85005
PHONE (602) 542-3678

AUGUST 2008

THIS ISSUE OF THE STATISTICAL BULLETIN COMPARES AUGUST 2008 DATA FOR EACH OF THE INDICATED PROGRAMS WITH THE INFORMATION FOR JULY 2008 AND AUGUST 2007. STATEWIDE SUMMARIES OF ACTIVITY WITHIN EACH OF THE SPECIFIC PROGRAMS FOR THIS REPORT PERIOD ARE DISCUSSED BELOW. THE TABLES COMPARE CURRENT AND PRIOR MONTH DATA. DISTRICT AND COUNTY COMPARISONS ARE PROVIDED WITHIN THIS BULLETIN

CASH ASSISTANCE (CA)

COMPARING TO JULY 2008, AUGUST 2008 CASES INCREASED BY 560 (1.60%) TO 35,562. RECIPIENTS INCREASED BY 1,290 (1.73%) TO 75,648. PAYMENTS INCREASED BY \$144,388 (1.56%) TO \$9,420,582. AVERAGE PAYMENT PER CASE DECREASED BY \$0.11 (0.04%) TO \$264.91. PAYMENT PER RECIPIENT DECREASED BY \$0.22 (0.18%) TO \$124.53.

COMPARING TO AUGUST 2007, AUGUST 2008 CASES DECREASED BY 113 (0.32%). RECIPIENTS DECREASED BY 1,022 (1.33%). TOTAL PAYMENTS DECREASED BY \$115,645 (1.21%). THE AVERAGE PAYMENT PER CASE DECREASED BY \$2.40 (0.90%). THE AVERAGE PAYMENT PER RECIPIENT INCREASED BY \$0.15 (0.12%).

CASH ASSISTANCE UNEMPLOYED PARENT PROGRAM (CA-UP)

COMPARING TO JULY 2008, AUGUST 2008 CASES INCREASED BY 84 (9.70%) TO 950. RECIPIENTS INCREASED BY 349 (10.99%) TO 3,524. PAYMENTS INCREASED BY \$33,279 (10.99%) TO \$335,985. AVERAGE PAYMENT PER CASE INCREASED BY \$4.12 (1.18%) TO \$353.67. PAYMENT PER RECIPIENT DECREASED BY \$0.00 (0.00%) TO \$95.34.

COMPARING TO AUGUST 2007, AUGUST 2008 CASES INCREASED BY 334 (54.22%). RECIPIENTS INCREASED BY 1,123 (46.77%). TOTAL PAYMENTS INCREASED BY \$109,674 (48.46%). THE AVERAGE PAYMENT PER CASE DECREASED BY \$13.72 (3.73%). THE AVERAGE PAYMENT PER RECIPIENT INCREASED BY \$1.08 (1.15%).

CASH ASSISTANCE WITH GRANT UNDER \$100 (CA-MOE)

COMPARING TO JULY 2008, AUGUST 2008 CASES DECREASED BY 41 (5.59%) TO 692. RECIPIENTS DECREASED BY 50 (3.46%) TO 1,397. PAYMENTS DECREASED BY \$1,638 (3.14%) TO \$50,510. AVERAGE PAYMENT PER CASE INCREASED BY \$1.85 (2.60%) TO \$72.99. AVERAGE PAYMENT PER RECIPIENT INCREASED BY \$0.12 (0.33%) TO \$36.16.

COMPARING TO AUGUST 2007, AUGUST 2008 CASES INCREASED BY 29 (4.37%). RECIPIENTS INCREASED BY 13 (0.94%). TOTAL PAYMENTS INCREASED BY \$1,551 (3.17%). THE AVERAGE PAYMENT PER CASE DECREASED BY \$0.85 (1.15%). THE AVERAGE PAYMENT PER RECIPIENT INCREASED BY \$0.78 (2.20%).

CASH ASSISTANCE UNEMPLOYED PARENT PROGRAM WITH GRANT UNDER \$100 (CA-UP-MOE) NEW PROGRAM STARTING 7/01

COMPARING TO JULY 2008, AUGUST 2008 CASES INCREASED BY 11 (84.62%) TO 24. RECIPIENTS INCREASED BY 40 (121.21%) TO 73. PAYMENTS INCREASED BY \$623 (81.01%) TO \$1,392. AVERAGE PAYMENT PER CASE DECREASED BY \$1.15 (1.94%) TO \$58.00. PAYMENT PER RECIPIENT DECREASED BY \$4.23 (18.15%) TO \$19.07.

COMPARING TO AUGUST 2007, AUGUST 2008 CASES INCREASED BY 7 (41.18%). RECIPIENTS INCREASED BY 24 (3.12%). TOTAL PAYMENTS INCREASED BY \$460 (49.36%). THE AVERAGE PAYMENT PER CASE INCREASED BY \$3.18 (5.80%). THE AVERAGE PAYMENT PER RECIPIENT INCREASED BY \$0.05 (0.26%).

GENERAL ASSISTANCE (GA)

COMPARING TO JULY 2008, AUGUST 2008 CASES INCREASED BY 52 (3.70%) TO 1,457. RECIPIENTS INCREASED BY 53 (3.76%) TO 1,463. PAYMENTS INCREASED BY \$5,983 (2.80%) TO \$219,948. AVERAGE PAYMENT PER CASE DECREASED BY \$1.33 (0.87%) TO \$150.96. AVERAGE PAYMENT PER RECIPIENT DECREASED BY \$1.41 (0.93%) TO \$150.34.

COMPARING TO AUGUST 2007, AUGUST 2008 CASES INCREASED BY 147 (11.22%). RECIPIENTS INCREASED BY 148 (11.25%). TOTAL PAYMENTS INCREASED BY \$19,161 (9.54%). THE AVERAGE PAYMENT PER CASE DECREASED BY \$2.31 (1.51%). THE AVERAGE PAYMENT PER RECIPIENT DECREASED BY \$2.35 (1.54%).

TUBERCULOSIS CONTROL PROGRAM (TC)

COMPARING TO JULY 2008, AUGUST 2008 CASES DECREASED BY 2 (20.00%) TO 8. RECIPIENTS DECREASED BY 2 (20.00%) TO 8. PAYMENTS DECREASED BY \$12 (1.28%) TO \$929. AVERAGE PAYMENT PER CASE INCREASED BY \$22.03 (23.41%) TO \$116.13. AVERAGE PAYMENT PER RECIPIENT INCREASED BY \$22.03 (23.41%) TO \$116.13.

COMPARING TO AUGUST 2007, AUGUST 2008 CASES DECREASED BY 4 (33.33%). RECIPIENTS DECREASED BY 4 (33.33%). TOTAL PAYMENTS DECREASED BY \$393 (29.73%). THE AVERAGE PAYMENT PER CASE INCREASED BY \$5.96 (5.41%). THE AVERAGE PAYMENT PER RECIPIENT INCREASED BY \$5.96 (5.41%).

FOOD STAMP PROGRAM (FS)

COMPARING TO JULY 2008, AUGUST 2008 FOOD STAMP HOUSEHOLDS INCREASED BY 6,342 (2.33%) TO 278,547. PERSONS RECEIVING FOOD STAMPS INCREASED BY 16,369 (2.48%) TO 675,664. TOTAL COUPON ISSUANCE INCREASED BY \$1,512,614 (2.27%) TO \$68,069,591. THE AVERAGE HOUSEHOLD ALLOTMENT DECREASED BY \$0.14 (0.06%) TO \$244.37. THE AVERAGE ALLOTMENT PER PERSON DECREASED BY \$0.21 (0.21%) TO \$100.74.

COMPARING TO AUGUST 2007, AUGUST 2008 FOOD STAMP HOUSEHOLDS INCREASED BY 47,209 (20.41%). PERSONS RECEIVING FOOD STAMPS INCREASED BY 109,792 (19.40%). TOTAL COUPON ISSUANCE INCREASED BY \$12,953,901 (23.50%). THE AVERAGE ALLOTMENT PER HOUSEHOLD INCREASED BY \$6.12 (2.57%). THE AVERAGE ALLOTMENT PER PERSON INCREASED BY \$3.34 (3.43%).

MEDICAL ASSISTANCE PROGRAM (MA) NEW TABLE INCLUDES PROP. 204 CATEGORIES

COMPARING TO JULY 2008, AUGUST 2008 TOTAL RECIPIENTS TOTAL RECIPIENTS INCREASED BY 8,666 (0.90%). SOBRA WOMEN AT 140% FPL INCREASED BY 0 (0.00%). SOBRA CHILDREN INCREASED BY 168 (0.26%). ADULTS W/O CHILD AT 100% INCREASED BY 319 (0.79%). FOSTER CARE INCREASED BY 163 (1.57%). 1931 AT 36% FPL INCREASED BY 4,898 (1.78%). EMERGENCY SERVICES DECREASED BY 289 (0.35%). INFANTS INCREASED BY 275 (0.55%). ADULT W/O CHILD AT 140% INCREASED BY 1,293 (1.28%). MEDICAL W/SPEND DOWN DECREASED BY 62 (1.19%). SOBRA WOMAN AT 100% DECREASED BY 110 (3.01%). SOBRA CHILD AT 100% INCREASED BY 1,643 (0.97%). TRANSITIONAL MEDICAL DECREASED BY 632 (1.51%). 1931 AT 100% INCREASED BY 774 (0.95%). YATI INCREASED BY 6 (2.31%). ALL OTHER CATEGORIES INCREASED BY 220 (0.92%).

COMPARING TO AUGUST 2007, AUGUST 2008 TOTAL RECIPIENTS TOTAL RECIPIENTS INCREASED BY 77,155 (8.65%). SOBRA WOMEN AT 140% FPL INCREASED BY 215 (1.84%). SOBRA CHILDREN INCREASED BY 2,169 (3.53%). ADULTS W/O CHILD AT 100% INCREASED BY 3,922 (10.74%). FOSTER CARE INCREASED BY 1,375 (15.00%). 1931 AT 36% FPL INCREASED BY 28,262 (11.24%). EMERGENCY SERVICES DECREASED BY 2,356 (2.75%). INFANTS INCREASED BY 239 (0.48%). ADULT W/O CHILD AT 140% INCREASED BY 19,753 (23.98%). MEDICAL W/SPEND DOWN DECREASED BY 191 (3.58%). SOBRA WOMAN AT 100% INCREASED BY 34 (0.97%). SOBRA CHILD AT 100% INCREASED BY 13,873 (8.88%). TRANSITIONAL MEDICAL DECREASED BY 1,016 (2.41%). 1931 AT 100% INCREASED BY 7,525 (10.10%). YATI INCREASED BY 50 (23.15%). ALL OTHER CATEGORIES INCREASED BY 3,301 (15.79%).

TANF SUMMARY

TABLES 1, 1A, 1B, & 1C: ARIZONA 1

	AUGUST 2008							JULY 2008			AUGUST 2007		
	FAMILIES (CASES)	PERSONS (RECIP.)	ADULTS	CHILDREN	TOTAL PAYMENTS	AVERAGE	AVERAGE	FAMILIES (CASES)	PERSONS (RECIP.)	TOTAL PAYMENTS	FAMILIES (CASES)	PERSONS (RECIP.)	TOTAL PAYMENTS
						PAYMENT/ CASE	PAYMENT/ RECIP.						
ARIZONA	37,228	80,642	19,684	60,958	9,808,469	263.47	121.63	614	1,629	176,652	257	138	(3,960)
DISTRICT I													
MARICOPA	21,157	46,584	10,662	35,922	5,635,260	266.35	120.97	435	1,152	119,460	1,225	2,756	306,203
DISTRICT II													
PIMA	6,752	13,966	3,578	10,388	1,744,875	258.42	124.94	59	196	19,798	(478)	(1,287)	(157,317)
DISTRICT III													
APACHE	96	200	62	138	24,047	250.49	120.24	4	12	311	(57)	(148)	(15,779)
COCONINO	240	498	122	376	57,601	240.00	115.66	1	0	1,781	(33)	(88)	(9,348)
NAVAJO	1,324	3,259	939	2,320	366,185	276.57	112.36	11	31	3,559	(81)	(178)	(22,893)
YAVAPAI	685	1,306	273	1,033	166,343	242.84	127.37	(13)	(51)	(3,452)	66	110	13,339
DISTRICT IV													
LA PAZ	215	439	148	291	52,759	245.39	120.18	(4)	(31)	(2,229)	(28)	(88)	(9,805)
MOHAVE	1,375	2,931	861	2,070	356,945	259.60	121.78	30	94	6,023	(19)	(21)	(3,139)
YUMA	1,096	2,396	531	1,865	288,291	263.04	120.32	(5)	(13)	(879)	(194)	(456)	(52,341)
DISTRICT V													
GILA	730	1,499	531	968	189,259	259.26	126.26	32	69	10,353	(52)	(180)	(17,573)
PINAL	1,872	4,183	1,094	3,089	494,620	264.22	118.25	23	79	9,551	(123)	(355)	(42,400)
DISTRICT VI													
COCHISE	1,022	2,030	533	1,497	262,217	256.57	129.17	25	43	4,018	73	153	19,236
GRAHAM	351	684	209	475	88,276	251.50	129.06	13	43	6,634	(57)	(121)	(15,645)
GREENLEE	33	67	15	52	7,762	235.21	115.85	(1)	4	(141)	(18)	(38)	(5,764)
SANTA CRUZ	280	600	126	474	74,029	264.39	123.38	4	1	1,865	33	79	9,266

1/EXCLUDES: PRIOR MONTH NET TOTALS OF 2,124 CASES; 5,222 RECIPIENTS; \$399,022.
 1/GRANT DIVERSION TOTALS OF: 280 CASES; \$293,358.
 ZERO PAY TOTALS OF 1,139 CASES; 3,308 RECIPIENTS.

	CURRENT MO. CASES	CURRENT MO. RECIP.	CURRENT MO. DOLLARS	PRIOR MO. CASES	PRIOR MO. RECIP.	PRIOR MO. DOLLARS
PASQUA/YAQUI	312	888	\$93,630	18	58	4,979
WM APACHE	689	1,853	\$206,942	13	39	2,561
SALT RIVER	87	321	\$28,409	10	37	1,941
SAN CARLOS	689	1,460	\$181,599	28	63	3,428
HOPÍ	139	402	\$33,702	4	11	386
TOTAL	1,916	4,924	\$544,282	73	208	\$13,295

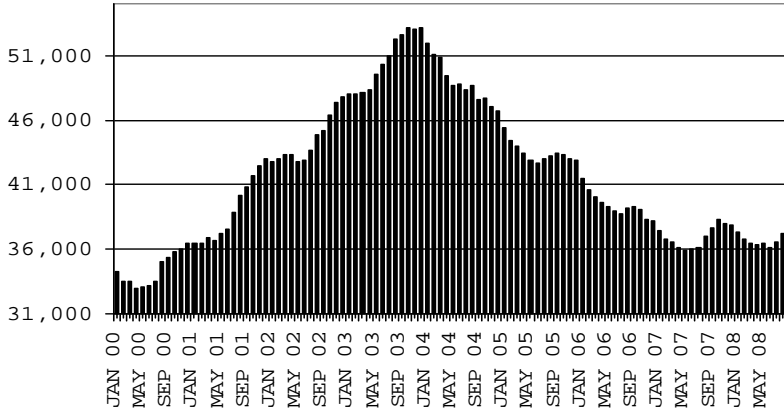
TANF SUMMARY

TABLES 1, 1A, 1B, & 1C

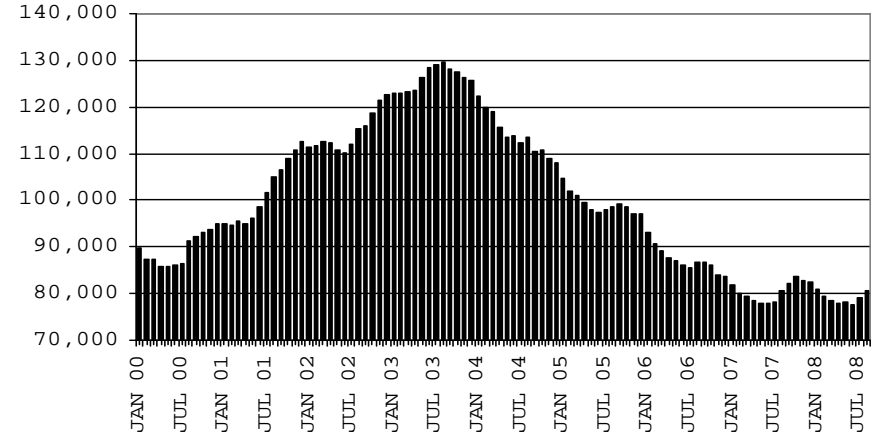
COMPARISON OF CASES, RECIPIENTS, PAYMENTS & AVERAGE PAYMENTS

FOR 2000, 2001, 2002, 2003, 2004, 2005, 2006, & 2007

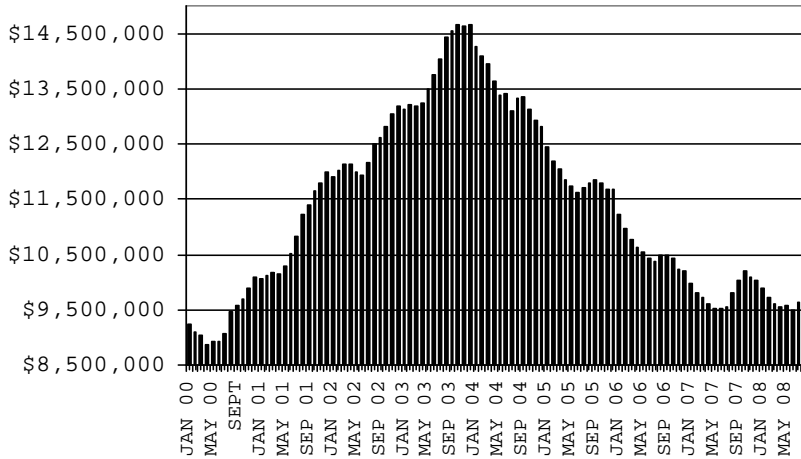
CASES



RECIPIENTS



PAYMENTS



AVERAGE PAYMENTS PER RECIPIENT

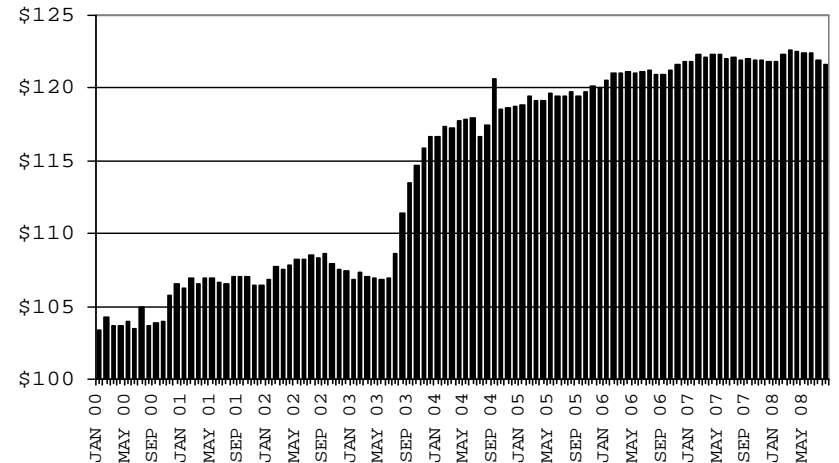


TABLE 1

CASH ASSISTANCE: ARIZONA 1.

	AUGUST 2008							CHANGE FROM			AUGUST 2007		
	FAMILIES (CASES)	(RECIP.)	ADULTS	CHILDREN	TOTAL PAYMENTS	AVERAGE PAYMENT/CASE	AVERAGE PAYMENT/RECIP.	FAMILIES (CASES)	PERSONS (RECIP.)	TOTAL PAYMENTS	FAMILIES (CASES)	PERSONS (RECIP.)	TOTAL PAYMENTS
ARIZONA	35,562	75,648	17,860	57,788	9,420,582	264.91	124.53	560	1,290	144,388	(113)	(1,022)	(115,645)
DISTRICT I													
MARICOPA	20,257	43,972	9,814	34,158	5,434,813	268.29	123.60	396	918	99,313	915	1,805	217,186
DISTRICT II													
PIMA	6,457	13,081	3,226	9,855	1,679,053	260.04	128.36	32	93	11,396	(548)	(1,503)	(175,096)
DISTRICT III													
APACHE	88	177	51	126	21,910	248.98	123.79	4	11	(120)	(52)	(138)	(15,591)
COCONINO	229	469	114	355	55,953	244.34	119.30	3	10	1,226	(30)	(83)	(9,538)
NAVAJO	1,229	2,888	779	2,109	331,923	270.08	114.93	15	44	4,246	(96)	(232)	(30,517)
YAVAPAI	658	1,246	255	991	163,339	248.24	131.09	(5)	(31)	(1,609)	58	101	13,387
DISTRICT IV													
LA PAZ	204	408	132	276	50,492	247.51	123.75	6	4	364	(23)	(73)	(8,412)
MOHAVE	1,289	2,648	735	1,913	334,173	259.25	126.20	11	27	1,367	(39)	(101)	(10,764)
YUMA	1,045	2,242	475	1,767	276,360	264.46	123.26	(2)	(5)	(216)	(173)	(413)	(48,756)
DISTRICT V													
GILA	717	1,470	514	956	186,768	260.49	127.05	36	84	12,006	(10)	(51)	(5,859)
PINAL	1,768	3,819	943	2,876	466,313	263.75	122.10	16	22	4,045	(125)	(361)	(42,980)
DISTRICT VI													
COCHISE	981	1,936	498	1,438	254,500	259.43	131.46	24	47	3,829	51	104	14,644
GRAHAM	341	655	194	461	85,307	250.17	130.24	20	57	6,727	(49)	(106)	(15,261)
GREENLEE	33	67	15	52	7,762	235.21	115.85	0	5	(54)	(17)	(36)	(5,717)
SANTA CRUZ	266	570	115	455	71,916	270.36	126.17	4	4	1,868	25	65	7,629

1/EXCLUDES: PRIOR MONTH NET TOTALS OF: 1,173 CASES; 2,937 RECIPIENTS; \$302,566.
 GRANT DIVERSION TOTALS OF: 280 CASES; \$293,358
 ZERO PAY TOTALS OF 1,129 CASES; 3,264 RECIPIENTS.

	CURRENT			PRIOR		
	CURRENT MO. CASES	MO. RECIP.	CURRENT MO. DOLLARS	PRIOR MO. CASES	MO. RECIP.	PRIOR MO. DOLLARS
PASQUAYAQUI	297	813	87,572	15	45	3,937
WM APACHE	630	1,597	182,823	9	20	1,874
SALT RIVER	87	321	28,409	10	37	1,941
SAN CARLOS	680	1,432	178,701	28	63	3,428
HOPÍ	139	402	33,702	4	11	386
TOTAL	1,833	4,565	511,207	66	176	11,566

CASES WITH GRANT UNDER \$100 (SEE TABLE 1B).

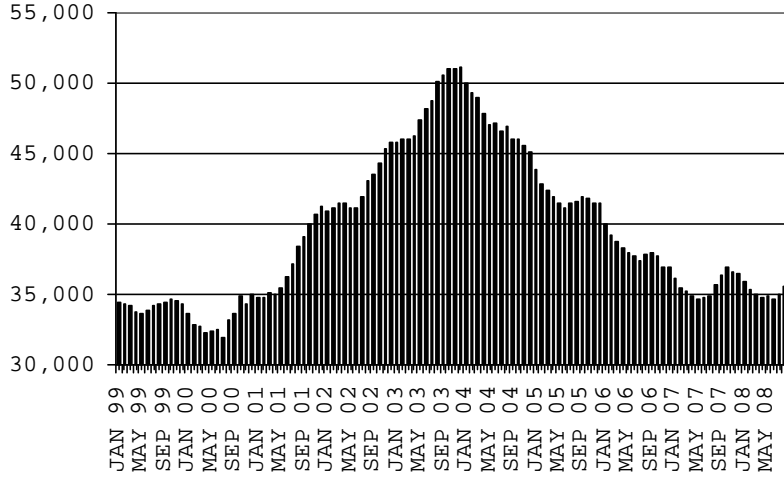
CHART 1

CASH ASSISTANCE PROGRAM

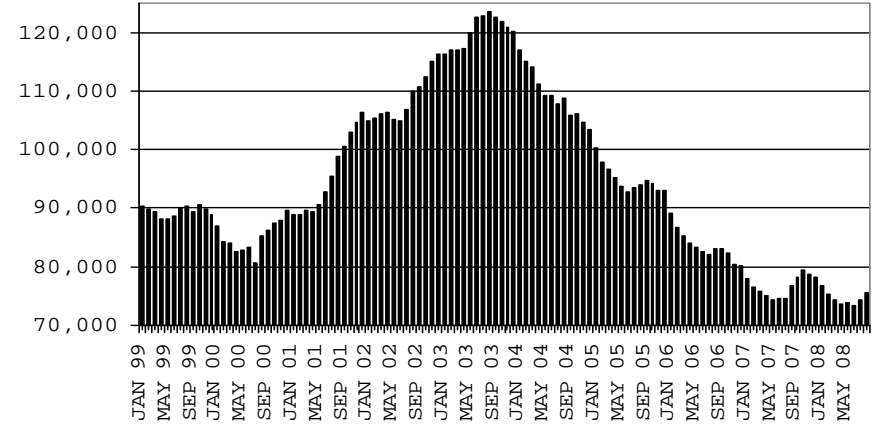
COMPARISON OF CASES, RECIPIENTS, PAYMENTS & AVERAGE PAYMENTS

FOR 1999, 2000, 2001, 2002, 2003, 2004, 2005, 2006 & 2007

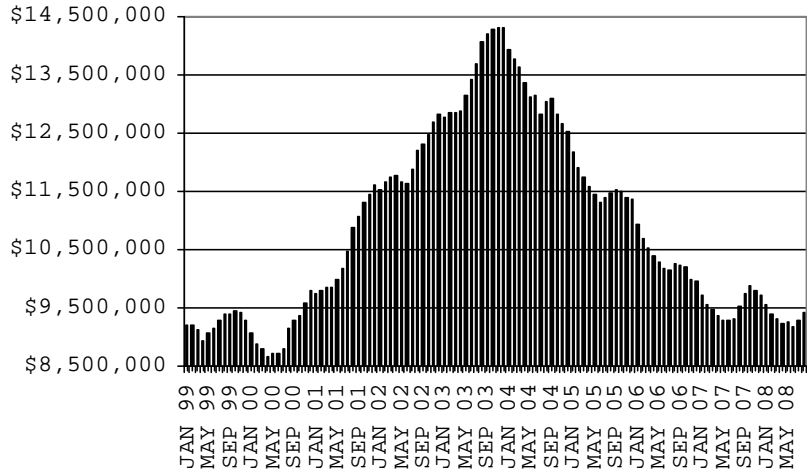
CASES



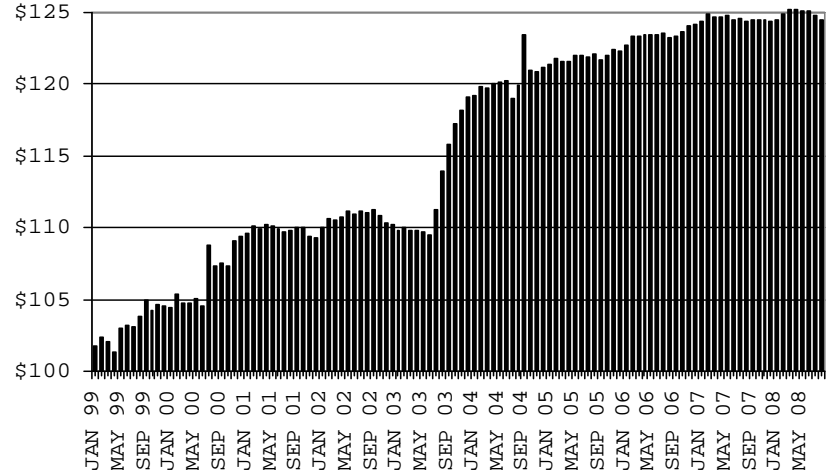
RECIPIENTS



PAYMENTS



AVERAGE PAYMENTS PER RECIPIENT



**TABLE 1A
CA-UP**

CASH ASSISTANCE UNEMPLOYED PARENT PROGRAM: ARIZONA 1

	AUGUST 2008							CHANGE FROM			AUGUST 2007		
	FAMILIES (CASES)	PERSONS (RECIP.)	ADULTS	CHILDREN	TOTAL PAYMENTS	AVERAGE PAYMENT/ CASE	AVERAGE PAYMENT/ RECIP.	FAMILIES (CASES)	PERSONS (RECIP.)	TOTAL PAYMENTS	FAMILIES (CASES)	PERSONS (RECIP.)	TOTAL PAYMENTS
ARIZONA	950	3,524	1,466	2,058	335,985	353.67	95.34	84	349	33,279	334	1,123	109,674
DISTRICT I													
MARICOPA	496	1,790	672	1,118	172,487	347.76	96.36	48	220	19,966	271	922	88,150
DISTRICT II													
PIMA	152	583	260	323	55,330	364.01	94.91	22	76	8,113	44	148	16,230
DISTRICT III													
APACHE	5	20	10	10	1,732	346.40	86.60	1	3	450	0	1	(95)
COCONINO	4	14	6	8	1,045	261.25	74.64	2	9	654	2	7	409
NAVAJO	86	355	157	198	33,664	391.44	94.83	(2)	(6)	(333)	15	66	7,497
YAVAPAI	6	19	9	10	1,911	318.50	100.58	(3)	(13)	(1,171)	(1)	(7)	(415)
DISTRICT IV													
LA PAZ	5	17	10	7	1,745	349.00	102.65	(7)	(29)	(2,483)	(4)	(14)	(1,491)
MOHAVE	56	219	106	113	20,307	362.63	92.73	15	44	4,278	21	76	7,017
YUMA	30	102	44	58	10,121	337.37	99.23	(3)	(11)	(928)	(10)	(35)	(2,836)
DISTRICT V													
GILA	7	20	12	8	2,085	297.86	104.25	(4)	(15)	(1,729)	(30)	(107)	(11,021)
PINAL	71	285	132	153	25,629	360.97	89.93	14	65	5,983	7	17	1,005
DISTRICT VI													
COCHISE	19	60	27	33	5,662	298.00	94.37	2	6	185	15	42	3,870
GRAHAM	8	27	15	12	2,806	350.75	103.93	0	2	324	0	(2)	27
GREENLEE	0	0	0	0	0	0.00	0.00	0	0	0	0	0	0
SANTA CRUZ	5	13	6	7	1,461	292.20	112.38	(1)	(2)	(30)	4	9	1,327

1/EXCLUDES: PRIOR MONTH NET TOTALS OF: 118 CASES; 445 RECIPIENTS; \$42,975.
GRANT DIVERSION TOTALS OF: 0 CASES; \$0.
ZERO PAY TOTALS OF 10 CASES; 44 RECIPIENTS.

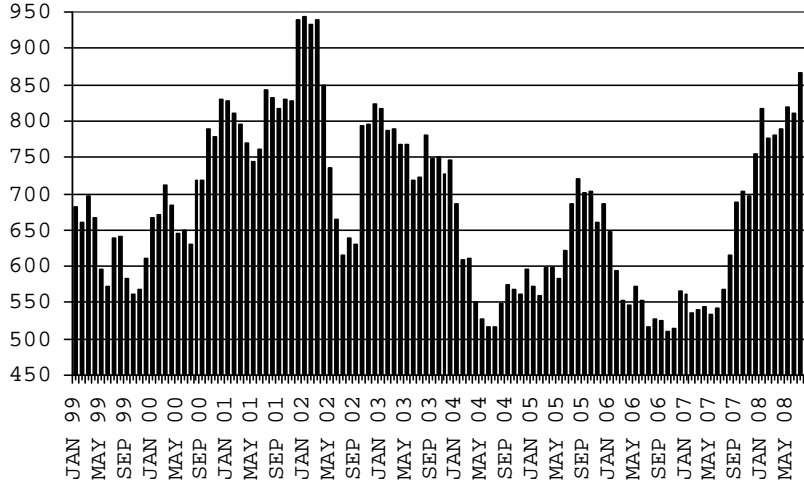
	CURRENT MO. CASES	CURRENT MO. RECIP.	CURRENT MO. DOLLARS	PRIOR MO. CASES	PRIOR MO. RECIP.	PRIOR MO. DOLLARS
PASQUA/YAQUI	15	75	6,058	3	13	1,042
WM APACHE	59	256	24,119	4	19	687
SALT RIVER	0	0	0	0	0	0
SAN CARLOS	9	28	2,898	0	0	0
HOPÍ	0	0	0	0	0	0
TOTAL	83	359	33,075	7	32	1,729

CASES WITH GRANT UNDER \$100 (SEE TABLE 1C).

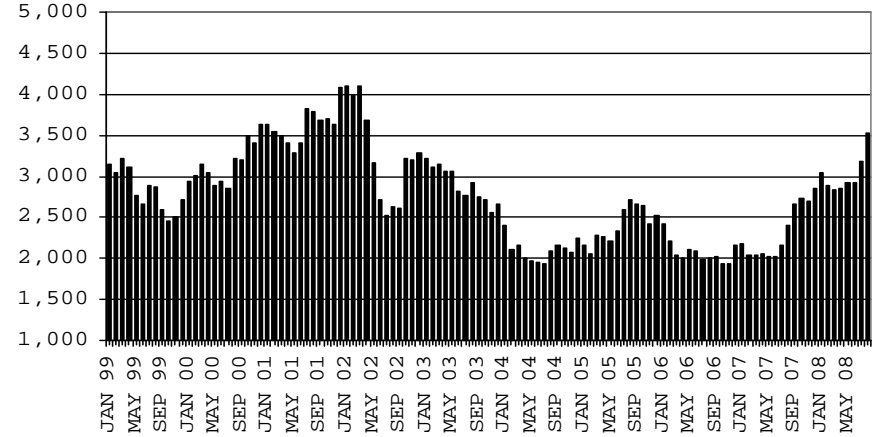
CHART 1A

CASH ASSISTANCE UNEMPLOYED PARENT PROGRAM COMPARISON OF CASES, RECIPIENTS, PAYMENTS & AVERAGE PAYMENTS FOR 1999, 2000, 2001, 2002, 2003, 2004, 2005, 2006 & 2007

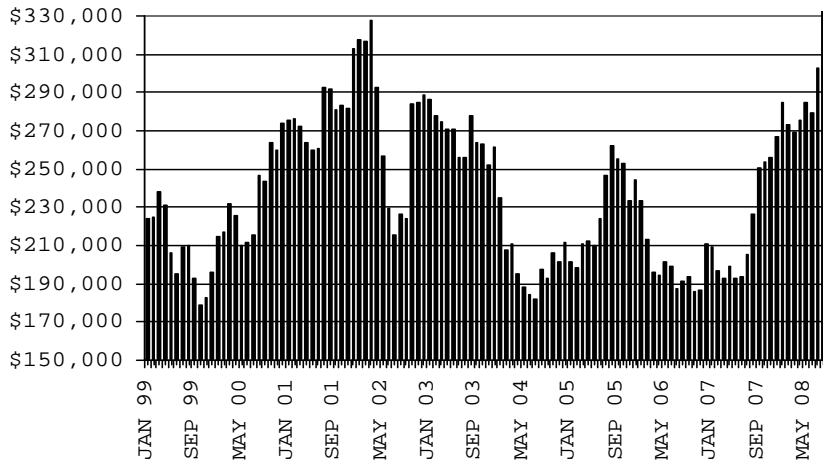
CASES



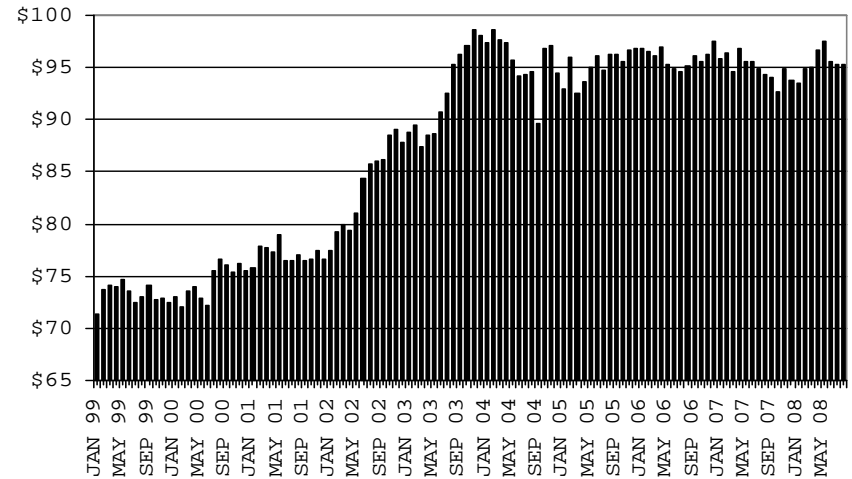
RECIPIENTS



PAYMENTS



AVERAGE PAYMENTS PER RECIPIENT



**TABLE 1B 1/
CASH ASSISTANCE: ARIZONA
CASES WITH GRANT UNDER \$100**

	CHANGE FROM												
	AUGUST 2008							JULY 2008			AUGUST 2007		
	FAMILIES (CASES)	PERSONS (RECIP.)	ADULTS	CHILDREN	TOTAL PAYMENTS	AVERAGE PAYMENT/ CASE	AVERAGE PAYMENT/ RECIP.	FAMILIES (CASES)	PERSONS (RECIP.)	TOTAL PAYMENTS	FAMILIES (CASES)	PERSONS (RECIP.)	TOTAL PAYMENTS
ARIZONA	692	1,397	336	1,061	50,510	72.99	36.16	(41)	(50)	(1,638)	29	13	1,551
DISTRICT I													
MARICOPA	391	792	169	623	27,159	69.46	34.29	(14)	3	(113)	31	13	459
DISTRICT II													
PIMA	139	290	86	204	10,297	74.08	35.51	2	16	143	27	67	1,662
DISTRICT III													
APACHE	3	3	1	2	405	135.00	135.00	(1)	(2)	(19)	(5)	(11)	(93)
COCONINO	7	15	2	13	603	86.14	40.20	(4)	(19)	(99)	(5)	(12)	(219)
NAVAJO	9	16	3	13	598	66.44	37.38	(2)	(7)	(354)	0	(12)	127
YAVAPAI	19	37	9	28	971	51.11	26.24	(5)	(7)	(672)	7	12	245
DISTRICT IV													
LA PAZ	5	9	4	5	498	99.60	55.33	(4)	(11)	(134)	(1)	(2)	91
MOHAVE	27	49	14	35	2,257	83.59	46.06	1	8	170	(1)	(2)	528
YUMA	20	45	11	34	1,768	88.40	39.29	0	3	265	(10)	(9)	(729)
DISTRICT V													
GILA	6	9	5	4	406	67.67	45.11	0	0	76	(12)	(22)	(693)
PINAL	33	79	19	60	2,678	81.15	33.90	(6)	(6)	(428)	(4)	(6)	(401)
DISTRICT VI													
COCHISE	22	34	8	26	2,055	93.41	60.44	(1)	(10)	4	7	7	722
GRAHAM	2	2	0	2	163	81.50	81.50	(7)	(16)	(417)	(8)	(13)	(411)
GREENLEE	0	0	0	0	0	0.00	0.00	(1)	(1)	(87)	(1)	(2)	(47)
SANTA CRUZ	9	17	5	12	652	72.44	38.35	1	(1)	27	4	5	310

EXCLUDES: PRIOR MONTH NET TOTALS OF 785 CASES; 1,660 RECIPIENTS; \$50,821.

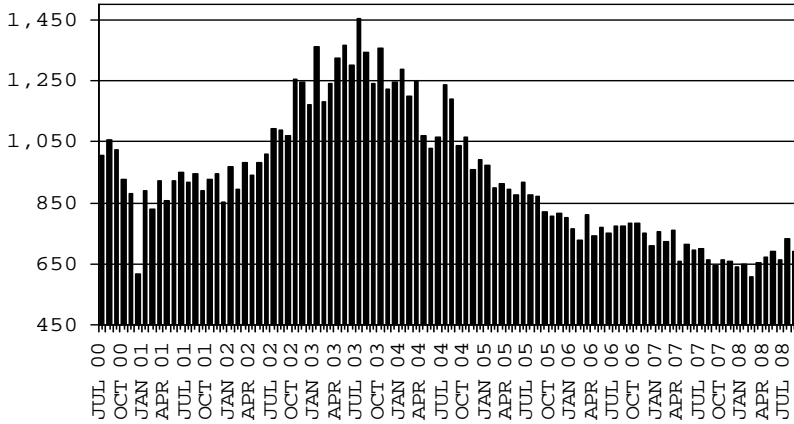
CHART 1B

CASH ASSISTANCE PROGRAM CASES WITH GRANT UNDER \$100

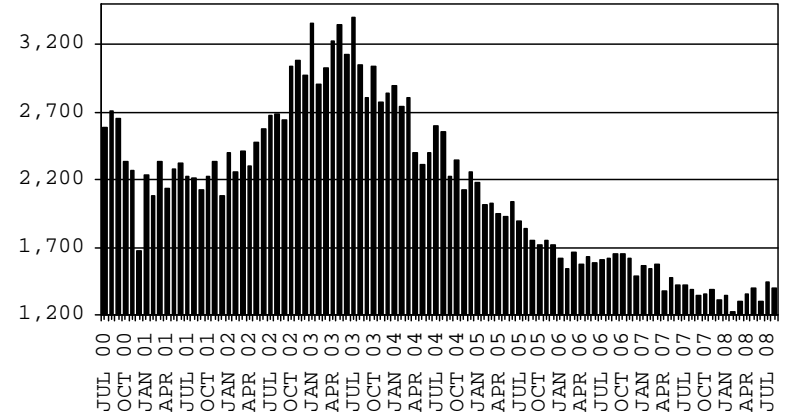
COMPARISON OF CASES, RECIPIENTS, PAYMENTS & AVERAGE PAYMENTS

FOR 2000, 2001, 2002, 2003, 2004, 2005, 2006 & 2007

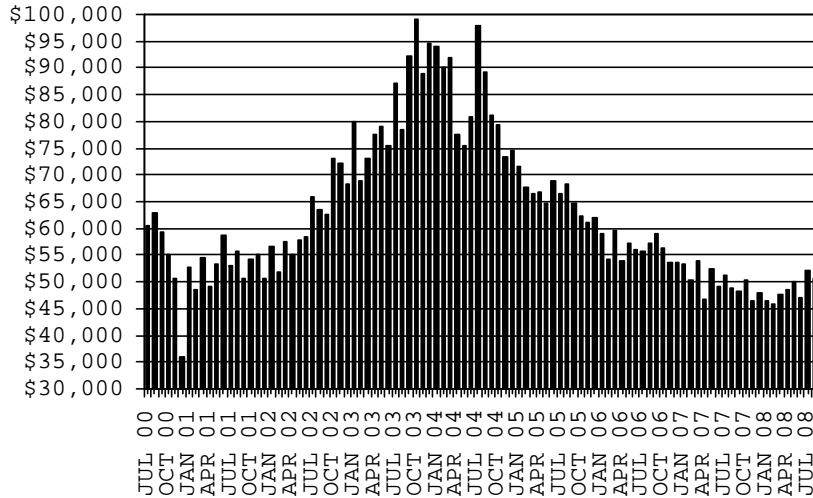
CASES



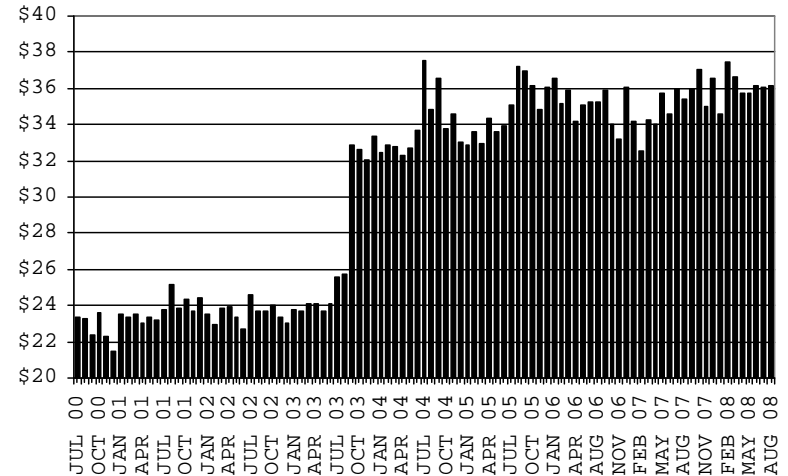
RECIPIENTS



PAYMENTS



AVERAGE PAYMENTS PER RECIPIENT



**TABLE 1C 1/
CASH ASSISTANCE UNEMPLOYED PARENT PROGRAM: ARIZONA
CASES WITH GRANT UNDER \$100**

	CHANGE FROM												
	AUGUST 2008							JULY 2008			AUGUST 2007		
	FAMILIES (CASES)	PERSONS (RECIP.)	ADULTS	CHILDREN	TOTAL PAYMENTS	AVERAGE PAYMENT/ CASE	AVERAGE PAYMENT/ RECIP.	FAMILIES (CASES)	PERSONS (RECIP.)	TOTAL PAYMENTS	FAMILIES (CASES)	PERSONS (RECIP.)	TOTAL PAYMENTS
ARIZONA	24	73	22	51	1,392	58.00	19.07	11	40	623	7	24	460
DISTRICT I													
MARICOPA	13	30	7	23	801	61.62	26.70	5	11	294	8	16	408
DISTRICT II													
PIMA	4	12	6	6	195	48.75	16.25	3	11	146	(1)	1	(113)
DISTRICT III													
APACHE	0	0	0	0	0	0.00	0.00	0	0	0	0	0	0
COCONINO	0	0	0	0	0	0.00	0.00	0	0	0	0	0	0
NAVAJO	0	0	0	0	0	0.00	0.00	0	0	0	0	0	0
YAVAPAI	2	4	0	4	122	61.00	30.50	0	0	0	2	4	122
DISTRICT IV													
LA PAZ	1	5	2	3	24	24.00	4.80	1	5	24	0	1	7
MOHAVE	3	15	6	9	208	69.33	13.87	3	15	208	0	6	80
YUMA	1	7	1	6	42	42.00	6.00	0	0	0	(1)	1	(20)
DISTRICT V													
GILA	0	0	0	0	0	0.00	0.00	0	0	0	0	0	0
PINAL	0	0	0	0	0	0.00	0.00	(1)	(2)	(49)	(1)	(5)	(24)
DISTRICT VI													
COCHISE	0	0	0	0	0	0.00	0.00	0	0	0	0	0	0
GRAHAM	0	0	0	0	0	0.00	0.00	0	0	0	0	0	0
GREENLEE	0	0	0	0	0	0.00	0.00	0	0	0	0	0	0
SANTA CRUZ	0	0	0	0	0	0.00	0.00	0	0	0	0	0	0

EXCLUDES: PRIOR MONTH NET TOTALS OF 48 CASES; 180 RECIPIENTS; \$2,660.

CHART 1C

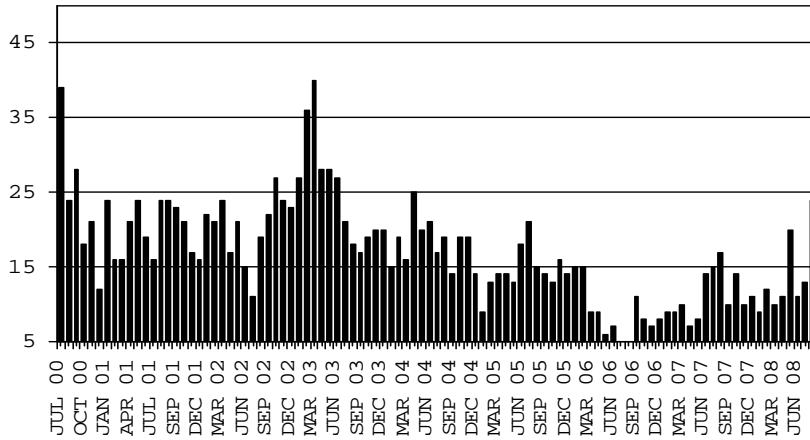
CASH ASSISTANCE UNEMPLOYED PARENT PROGRAM

CASES WITH GRANT UNDER \$100

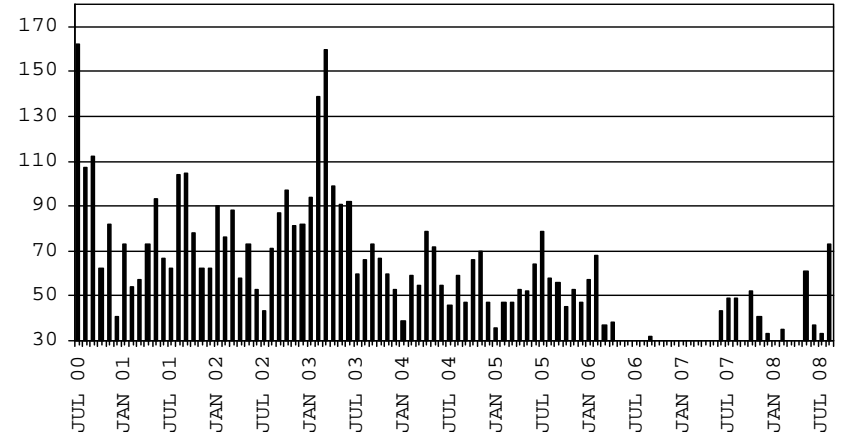
COMPARISON OF CASES, RECIPIENTS, PAYMENTS & AVERAGE PAYMENTS

FOR 2000, 2001, 2002, 2003, 2004, 2005, 2006 & 2007

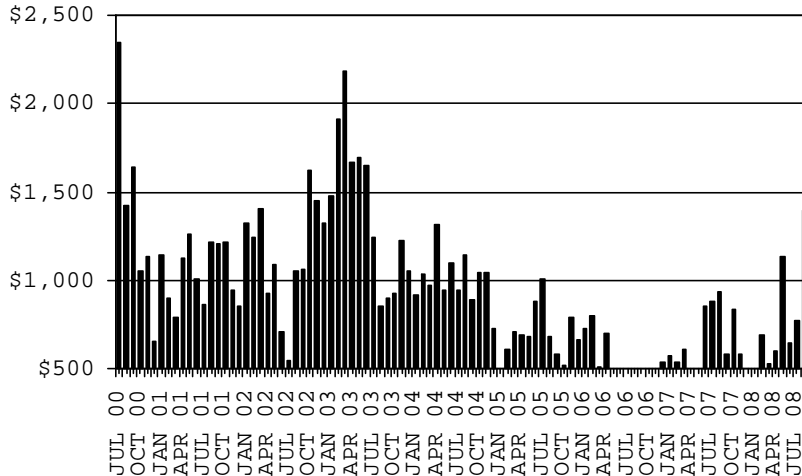
CASES



RECIPIENTS



PAYMENTS



AVERAGE PAYMENTS PER RECIPIENT

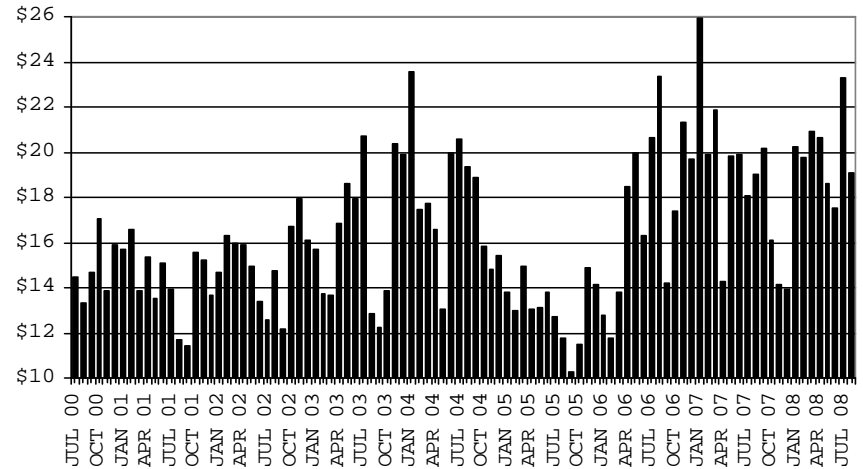


TABLE 2
GENERAL ASSISTANCE: ARIZONA 1,

	CHANGE FROM										
	AUGUST 2008					JULY 2008			AUGUST 2007		
	NUMBER OF CASES	PERSONS (RECIP.)	TOTAL PAYMENTS	AVERAGE PAYMENT/ CASE	AVERAGE PAYMENT/ RECIP.	NUMBER OF CASES	PERSONS (RECIP.)	TOTAL PAYMENTS	NUMBER OF CASES	PERSONS (RECIP.)	TOTAL PAYMENTS
ARIZONA	1,457	1,463	219,948	150.96	150.34	52	53	5,983	147	148	19,161
DISTRICT I											
MARICOPA	612	614	92,064	150.43	149.94	43	43	5,024	45	47	4,390
DISTRICT II											
PIMA	373	375	56,351	151.08	150.27	11	11	1,572	24	25	4,641
DISTRICT III	132	133	19,679	149.08	147.96	(1)	(1)	(362)	19	17	2,079
APACHE	9	10	1,552	172.44	155.20	0	0	0	1	1	303
COCONINO	23	23	3,394	147.57	147.57	0	0	0	2	1	343
NAVAJO	35	35	5,210	148.86	148.86	(1)	(1)	(359)	2	2	(123)
YAVAPAI	65	65	9,523	146.51	146.51	0	0	(3)	14	13	1,556
DISTRICT IV	156	157	23,222	148.86	147.91	0	1	(8)	57	58	8,410
LA PAZ	9	9	1,130	125.56	125.56	0	0	(65)	0	0	(232)
MOHAVE	111	112	17,459	157.29	155.88	1	2	230	46	47	7,374
YUMA	36	36	4,633	128.69	128.69	(1)	(1)	(173)	11	11	1,268
DISTRICT V	112	112	17,021	151.97	151.97	(4)	(4)	(892)	(13)	(14)	(2,852)
GILA	16	16	2,313	144.56	144.56	(4)	(4)	(822)	(6)	(6)	(1,280)
PINAL	96	96	14,708	153.21	153.21	0	0	(70)	(7)	(8)	(1,572)
DISTRICT VI	72	72	11,611	161.26	161.26	3	3	649	15	15	2,493
COCHISE	57	57	9,211	161.60	161.60	3	3	649	12	12	2,009
GRAHAM	10	10	1,665	166.50	166.50	(1)	(1)	(173)	2	2	346
GREENLEE	1	1	108	108.00	108.00	0	0	0	0	0	(65)
SANTA CRUZ	4	4	627	156.75	156.75	1	1	173	1	1	203

1/EXCLUDES: PRIOR MONTH NET TOTALS OF : 278 CASES; 278 RECIPIENTS; \$72,411.
REFUGEE RESETTLEMENT PROGRAM: 201 CASES; 270 RECIPIENTS; \$49,121.

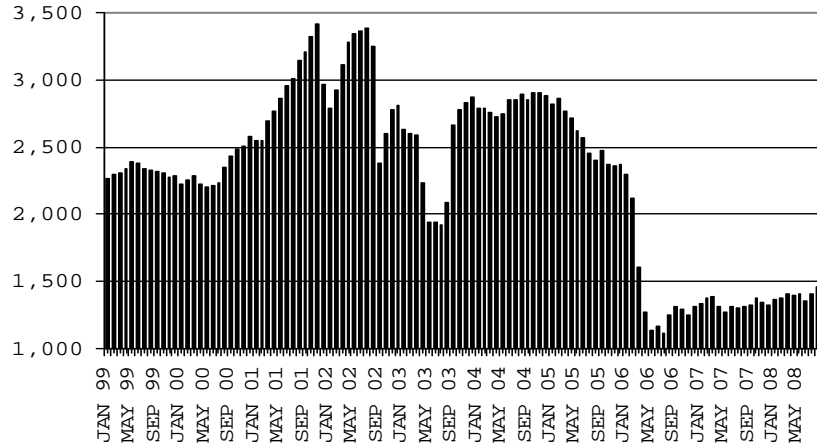
CHART 2

GENERAL ASSISTANCE PROGRAM

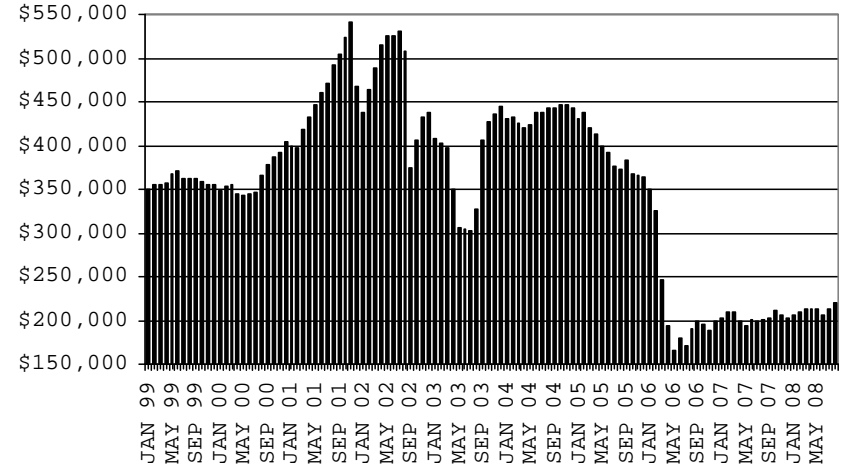
COMPARISON OF CASES, PAYMENTS & AVERAGE PAYMENTS

FOR 1999, 2000, 2001, 2002, 2003, 2004, 2005, 2006 & 2007

CASES



PAYMENTS



AVERAGE PAYMENT PER CASE

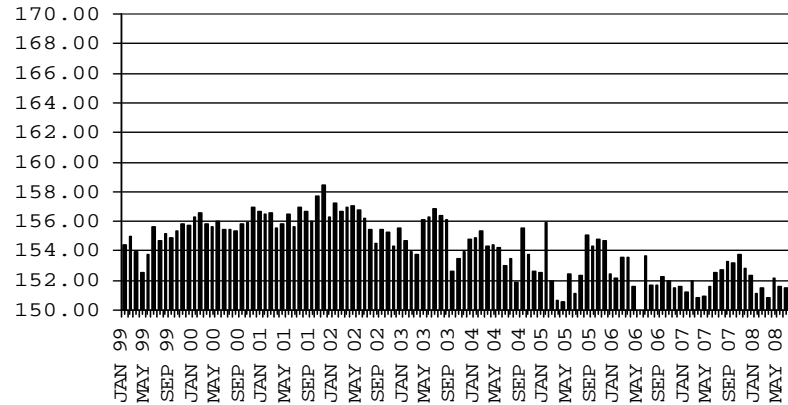


TABLE 4

TUBERCULOSIS CONTROL: ARIZONA 1/

	CHANGE FROM										
	AUGUST 2008					JULY 2008			AUGUST 2007		
	NUMBER OF CASES	PERSONS (RECIP.)	TOTAL PAYMENTS	AVERAGE PAYMENT/ CASE	AVERAGE PAYMENT/ RECIP.	NUMBER OF CASES	PERSONS (RECIP.)	TOTAL PAYMENTS	NUMBER OF CASES	PERSONS (RECIP.)	TOTAL PAYMENTS
ARIZONA	8	8	929	116.13	116.13	(2)	(2)	(12)	(4)	(4)	(393)
DISTRICT I											
MARICOPA	7	7	821	117.29	117.29	(2)	(2)	(12)	(5)	(5)	(501)
DISTRICT II											
PIMA	0	0	0	0.00	0.00	0	0	0	0	0	0
DISTRICT III	1	1	108	108.00	108.00	0	0	0	1	1	108
APACHE	0	0	0	0.00	0.00	0	0	0	0	0	0
COCONINO	0	0	0	0.00	0.00	0	0	0	0	0	0
NAVAJO	0	0	0	0.00	0.00	0	0	0	0	0	0
YAVAPAI	1	1	108	108.00	108.00	0	0	0	1	1	108
DISTRICT IV	0	0	0	0.00	0.00	0	0	0	0	0	0
LA PAZ	0	0	0	0.00	0.00	0	0	0	0	0	0
MOHAVE	0	0	0	0.00	0.00	0	0	0	0	0	0
YUMA	0	0	0	0.00	0.00	0	0	0	0	0	0
DISTRICT V	0	0	0	0.00	0.00	0	0	0	0	0	0
GILA	0	0	0	0.00	0.00	0	0	0	0	0	0
PINAL	0	0	0	0.00	0.00	0	0	0	0	0	0
DISTRICT VI	0	0	0	0.00	0.00	0	0	0	0	0	0
COCHISE	0	0	0	0.00	0.00	0	0	0	0	0	0
GRAHAM	0	0	0	0.00	0.00	0	0	0	0	0	0
GREENLEE	0	0	0	0.00	0.00	0	0	0	0	0	0
SANTA CRUZ	0	0	0	0.00	0.00	0	0	0	0	0	0

1/EXCLUDES: PRIOR MONTH NET TOTALS OF : 0 CASES; 0 RECIPIENTS; \$0.

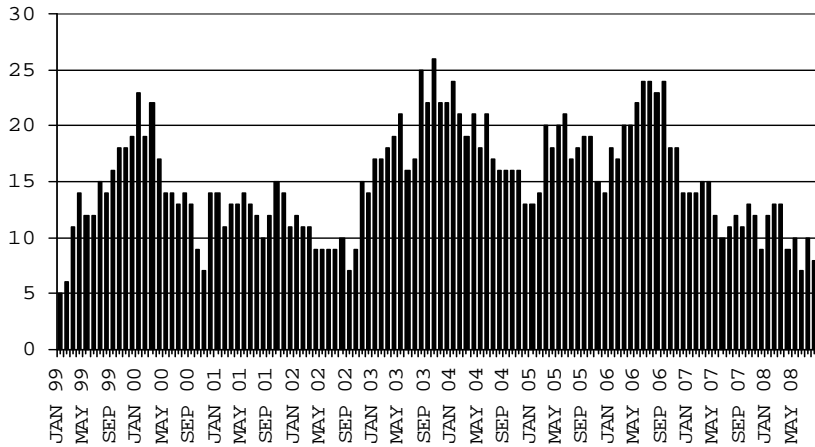
CHART 4

TUBERCULOSIS CONTROL PROGRAM

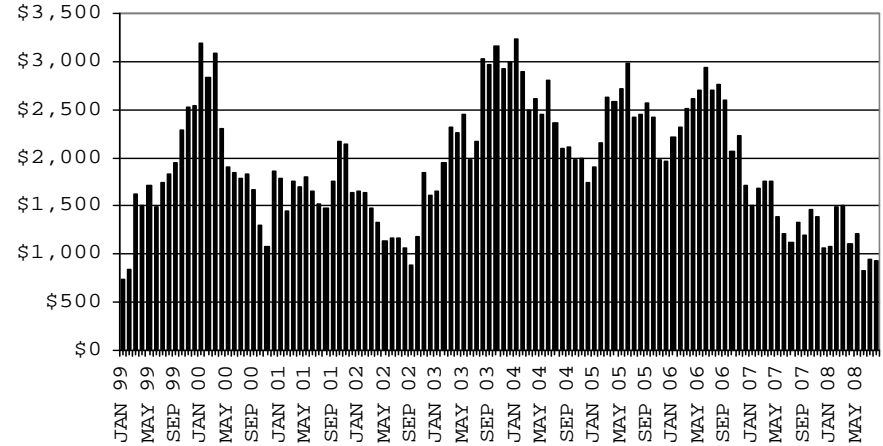
COMPARISON OF CASES, PAYMENTS & AVERAGE PAYMENTS

FOR 1999, 2000, 2001, 2002, 2003, 2004, 2005, 2006 & 2007

CASES



PAYMENTS



AVERAGE PAYMENT PER CASE

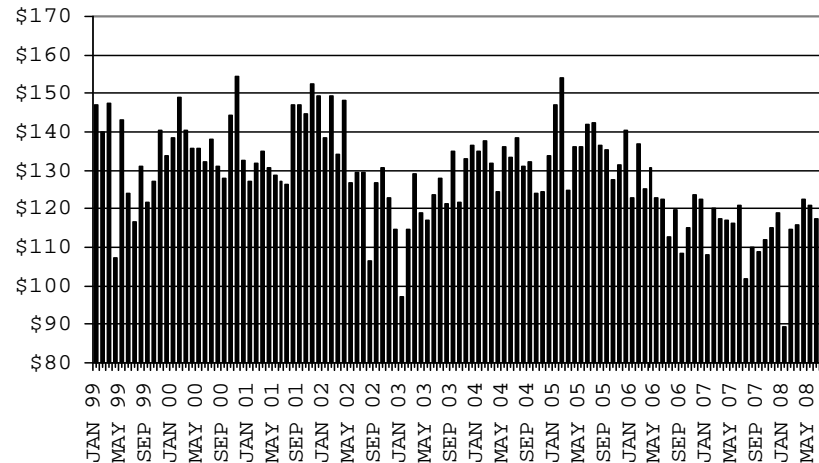


TABLE 6

FOOD STAMP PROGRAM: ARIZONA 1/

	CHANGE FROM											
	AUGUST 2008					JULY 2008			AUGUST 2007			
	HOUSEHOLDS	PERSONS	TOTAL COUPON ISSUANCE	AVERAGE ALLOT./ HOUSEHOLD	AVERAGE ALLOT./ PERSON	HOUSEHOLDS	PERSONS	TOTAL COUPON ISSUANCE	HOUSEHOLDS	PERSONS	TOTAL COUPON ISSUANCE	
ARIZONA	278,547	675,664	68,069,591	244.37	100.74	6,342	16,369	1,512,614	47,209	109,792	12,953,901	
DISTRICT I												
MARICOPA	141,617	345,248	35,482,888	250.56	102.78	3,778	9,461	909,422	27,344	66,941	7,853,160	
DISTRICT II												
PIMA	49,455	112,121	11,306,352	228.62	100.84	1,005	2,428	237,379	8,103	16,967	1,971,991	
DISTRICT III												
APACHE	6,643	20,082	1,971,673	296.80	98.18	78	237	13,122	296	210	124,338	
COCONINO	6,058	17,521	1,647,864	272.01	94.05	46	233	5,965	817	1,991	236,753	
NAVAJO	10,292	28,675	2,777,229	269.84	96.85	154	325	16,183	939	2,028	303,401	
YAVAPAI	7,931	16,229	1,584,731	199.81	97.65	173	483	37,855	1,642	3,503	375,716	
DISTRICT IV												
LA PAZ	1,388	3,027	312,968	225.48	103.39	3	9	5,408	130	215	34,307	
MOHAVE	12,878	26,832	2,755,116	213.94	102.68	150	436	40,395	2,553	4,747	579,954	
YUMA	11,405	30,932	2,837,703	248.81	91.74	330	1,015	98,118	1,189	3,082	306,633	
DISTRICT V												
GILA	3,787	8,792	891,124	235.31	101.36	73	201	17,263	328	634	84,789	
PINAL	14,208	35,980	3,616,548	254.54	100.52	312	851	73,886	2,505	6,426	710,135	
DISTRICT VI												
COCHISE	7,700	17,080	1,652,983	214.67	96.78	145	393	28,919	1,029	2,129	251,199	
GRAHAM	2,059	4,881	476,648	231.49	97.65	50	157	17,100	9	59	22,902	
GREENLEE	237	474	45,568	192.27	96.14	(8)	(18)	(3,512)	(20)	(53)	(4,428)	
SANTA CRUZ	2,889	7,790	710,196	245.83	91.17	53	158	15,111	345	913	103,051	

1/EXCLUDES: PRIOR MONTH NET TOTALS OF : 8,993 CASES; 24,359 RECIPIENTS; \$1,172,706.
 AGED CANCELATIONS: 0 CASES; 0 RECIPIENTS; 0.
 FS COUPON CONVERSIONS: 0 CASES; 0 RECIPIENTS; \$0.
 FS REINSTATED: 0 CASES; \$0.
 FS ZERO PAY: 8,528 CASES; 34,963 RECIPIENTS.

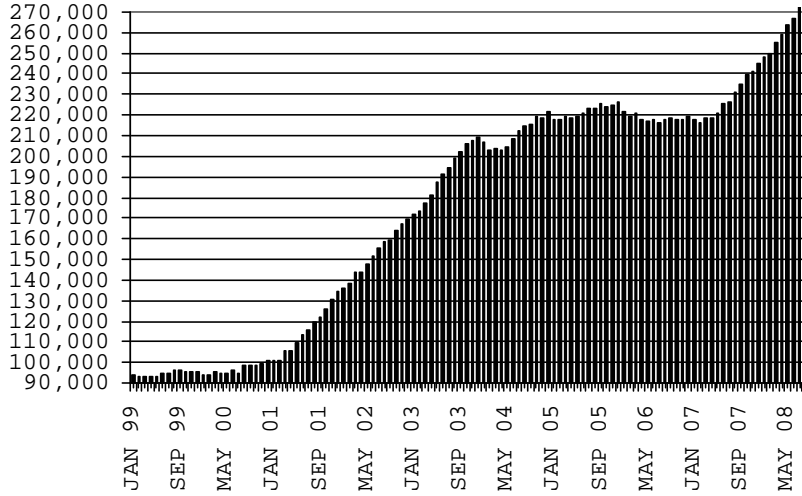
CHART 6

FOOD STAMPS PROGRAM

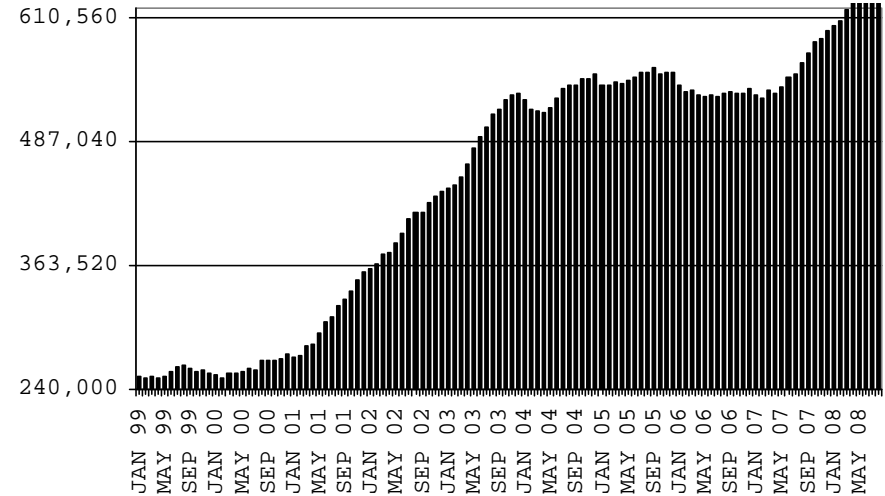
COMPARISON OF HOUSEHOLDS, RECIPIENTS, PAYMENTS & AVERAGE PAYMENTS

FOR 1999, 2000, 2001, 2002, 2003, 2004, 2005, 2006 & 2007

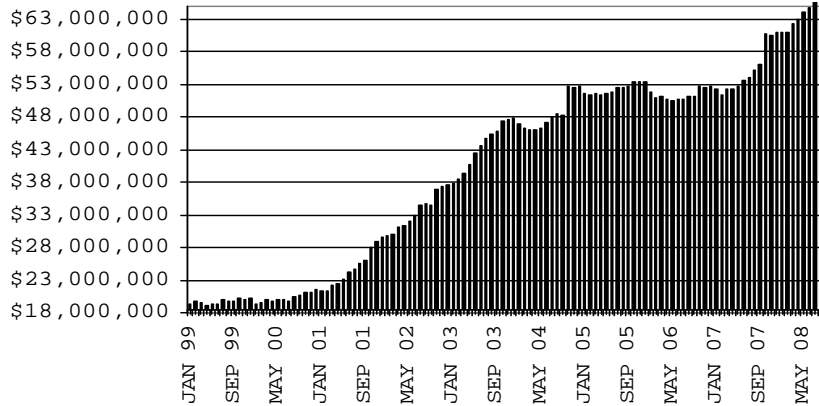
HOUSEHOLDS



RECIPIENTS



TOTAL PAYMENTS



AVERAGE PAYMENT PER HOUSEHOLD

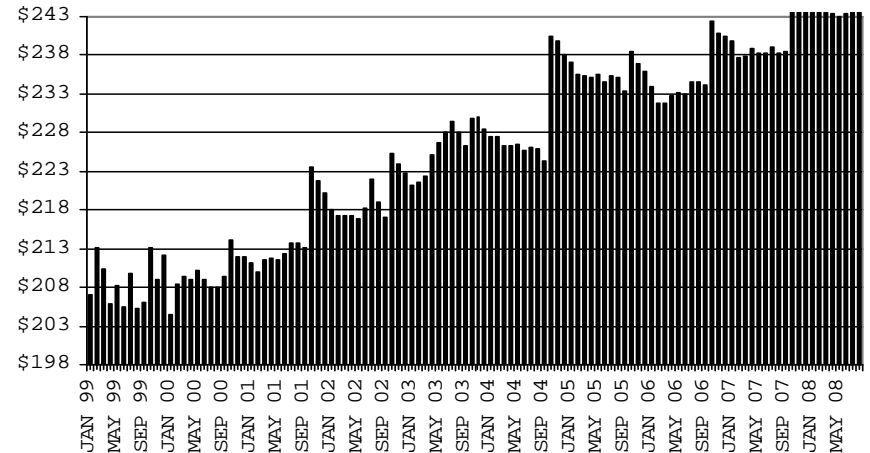


TABLE 7A
MEDICAL ASSISTANCE PROGRAM
RECIPIENTS

AUGUST 2008

	SOBRA WOMAN 133% FPL	SOBRA CHILD	ADULT W/O CHILD 100% FPL	FOSTER CARE	1931 36% FPL	FEDERAL EMERGENCY SERVICES	INFANTS	ADULT W/O CHILD 40% FPL	MEDICAL W/SPEND DOWN	SOBRA WOMAN 100% FPL	SOBRA CHILD 100% FPL	TRANSITIONAL MEDICAL T1 - T4	1931 100% FPL	YATI	OTHER	TOTAL CASES
ARIZONA	11,879	63,656	40,454	10,544	279,701	83,382	50,411	102,135	5,141	3,539	170,186	41,167	82,025	266	24,209	968,695
DISTRICT I																
MARICOPA	6,284	35,731	17,586	5,269	148,907	64,455	30,221	46,648	2,743	1,826	96,017	20,110	38,496	143	11,949	526,385
DISTRICT II																
PIMA	1,847	9,766	7,976	3,013	43,189	10,382	7,062	18,966	750	597	26,163	7,115	14,563	75	4,332	155,796
DISTRICT III																
APACHE	225	1,510	823	42	10,804	90	998	4,241	61	71	3,584	1,016	2,197	2	391	26,055
COCONINO	362	1,414	1,172	118	7,384	531	1,166	3,132	92	86	3,768	1,227	2,244	3	369	23,068
NAVAJO	344	2,161	1,323	133	11,382	289	1,445	5,032	134	125	4,630	1,404	2,941	4	590	31,937
YAVAPAI	403	1,748	1,832	463	5,788	1,456	1,318	3,117	223	89	4,171	1,353	2,669	15	1,035	25,680
DISTRICT IV																
LA PAZ	45	228	204	13	1,206	168	180	597	30	22	622	171	318	0	139	3,943
MOHAVE	503	2,095	2,069	262	9,999	867	1,604	5,291	342	152	6,514	2,017	3,890	3	1,316	36,924
YUMA	595	2,464	2,528	264	10,779	2,078	1,927	3,455	237	198	8,668	2,103	5,371	3	1,327	41,997
DISTRICT V																
GILA	138	705	578	76	4,049	154	474	2,058	78	33	1,632	507	966	1	296	11,745
PINAL	633	3,606	1,888	521	14,581	1,692	2,208	5,408	278	168	7,247	2,049	3,951	11	1,157	45,398
DISTRICT VI																
COCHISE	242	1,132	1,361	261	6,315	615	895	2,448	100	84	3,541	1,054	2,239	5	732	21,024
GRAHAM	139	471	380	69	2,100	63	400	921	27	29	1,030	421	662	1	155	6,868
GREENLEE	13	32	35	9	286	5	62	110	7	6	114	40	57	0	21	797
SANTA CRUZ	106	593	699	31	2,932	537	451	711	39	53	2,485	580	1,461	0	400	11,078

TABLE 7B

MEDICAL ASSISTANCE PROGRAM

RECIPIENTS

CHANGE FROM

JULY 2008

	SOBRA WOMAN 133% FPL	SOBRA CHILD	ADULT W/O CHILD 100% FPL	FOSTER CARE	1931 36% FPL	FEDERAL EMERGENCY SERVICES	INFANTS	ADULT W/O CHILD 40% FPL	MEDICAL W/SPEND DOWN	SOBRA WOMAN 100% FPL	SOBRA CHILD 100% FPL	TRANSITIONAL MEDICAL T1 - T4	1931 100% FPL	YATI	OTHER	TOTAL CASES
ARIZONA	0	168	319	163	4,898	(289)	275	1,293	(62)	(110)	1,643	(632)	774	6	220	8,666
DISTRICT I																
MARICOPA	24	20	214	86	2,670	(274)	100	877	(49)	(41)	1,067	(124)	494	10	92	5,166
DISTRICT II																
PIMA	19	45	14	73	904	12	76	173	(16)	18	101	(155)	(27)	(1)	42	1,278
DISTRICT III	(13)	134	24	11	268	(50)	22	(2)	16	(36)	242	(93)	190	(1)	56	768
APACHE	(9)	23	5	0	102	(2)	27	(60)	5	(4)	1	11	38	0	5	142
COCONINO	(2)	17	6	1	23	(10)	(6)	1	5	(15)	46	(20)	38	(2)	(10)	72
NAVAJO	(3)	56	(12)	5	(18)	(6)	(16)	46	6	(8)	78	(37)	18	0	24	133
YAVAPAI	1	38	25	5	161	(32)	17	11	0	(9)	117	(47)	96	1	37	421
DISTRICT IV	11	(36)	39	(12)	587	16	52	116	(1)	(30)	28	(68)	34	0	71	807
LA PAZ	1	7	(4)	(1)	17	(8)	(3)	7	6	(4)	(16)	9	0	0	(7)	4
MOHAVE	6	(2)	6	(7)	154	(10)	12	78	(2)	(15)	(16)	45	(26)	1	16	240
YUMA	4	(41)	37	(4)	416	34	43	31	(5)	(11)	60	(122)	60	(1)	62	563
DISTRICT V	(37)	(18)	31	6	221	(4)	(1)	101	13	(9)	33	(64)	29	(1)	3	303
GILA	(21)	(6)	7	(2)	84	10	12	22	6	3	6	(6)	(19)	0	(4)	92
PINAL	(16)	(12)	24	8	137	(14)	(13)	79	7	(12)	27	(58)	48	(1)	7	211
DISTRICT VI	(4)	23	(3)	(1)	248	11	26	28	(25)	(12)	172	(128)	54	(1)	(44)	344
COCHISE	11	18	(2)	1	15	0	13	(9)	(26)	(3)	127	(41)	47	(1)	(35)	115
GRAHAM	(4)	16	(16)	0	53	(3)	5	30	0	(2)	(11)	(20)	(13)	0	(1)	34
GREENLEE	(5)	0	(2)	(1)	8	1	2	(3)	0	0	4	(9)	(3)	0	1	(7)
SANTA CRUZ	(6)	(11)	17	(1)	172	13	6	10	1	(7)	52	(58)	23	0	(9)	202

TABLE 7C

MEDICAL ASSISTANCE PROGRAM

RECIPIENTS

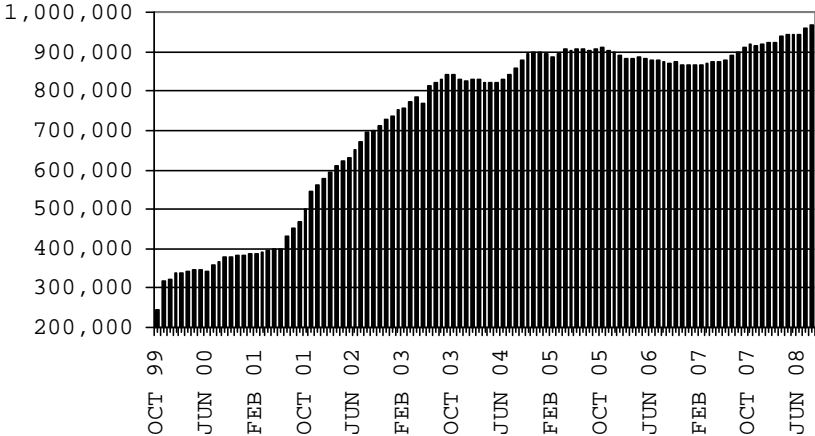
CHANGE FROM

AUGUST 2007

	SOBRA WOMAN 133% FPL	SOBRA CHILD	ADULT W/O CHILD 100% FPL	FOSTER CARE	1931 36% FPL	FEDERAL EMERGENCY SERVICES	INFANTS	ADULT W/O CHILD 40% FPL	MEDICAL W/SPEND DOWN	SOBRA WOMAN 100% FPL	SOBRA CHILD 100% FPL	TRANSITIONAL MEDICAL T1 - T4	3E 1931 100% FPL	YATI	OTHER	TOTAL CASES
ARIZONA	159	2,102	3,741	1,275	25,951	(2,481)	(287)	18,286	(31)	48	13,738	(1,299)	7,394	40	2,813	71,449
DISTRICT I																
MARICOPA	325	1,793	1,962	622	18,978	(1,421)	(269)	10,531	(115)	64	10,144	(1,038)	4,403	34	1,381	47,394
DISTRICT II																
PIMA	10	366	797	427	3,267	(444)	(33)	3,617	72	63	1,327	(88)	1,155	4	561	11,101
DISTRICT III	(150)	74	305	80	1,210	(108)	(1)	1,521	(107)	(35)	770	(97)	691	(4)	343	4,492
APACHE	(26)	89	(41)	2	106	(6)	33	71	(3)	(32)	(177)	(124)	(87)	2	61	(132)
COCONINO	(47)	49	87	(7)	392	25	(5)	408	8	(2)	340	(59)	183	(9)	29	1,392
NAVAJO	(29)	(33)	62	14	184	(25)	85	505	(28)	14	314	90	225	0	89	1,467
YAVAPAI	(48)	(31)	197	71	528	(102)	(114)	537	(84)	(15)	293	(4)	370	3	164	1,765
DISTRICT IV	(4)	(164)	376	32	1,002	(324)	(54)	1,400	128	(26)	698	348	528	3	359	4,302
LA PAZ	2	15	16	(5)	5	(7)	5	38	9	(3)	(4)	22	(15)	0	6	84
MOHAVE	8	(52)	189	30	1,102	(102)	(45)	1,109	56	(13)	325	307	387	1	158	3,460
YUMA	(14)	(127)	171	7	(105)	(215)	(14)	253	63	(10)	377	19	156	2	195	758
DISTRICT V	9	10	210	95	1,073	(75)	(12)	911	16	(13)	655	(57)	467	3	74	3,366
GILA	0	(55)	86	(3)	39	(2)	(7)	226	(19)	(1)	130	21	15	0	33	463
PINAL	9	65	124	98	1,034	(73)	(5)	685	35	(12)	525	(78)	452	3	41	2,903
DISTRICT VI	(31)	23	91	19	421	(109)	82	306	(25)	(5)	144	(367)	150	0	95	794
COCHISE	(21)	25	78	6	271	(78)	41	231	(11)	(4)	45	(151)	108	0	27	567
GRAHAM	(2)	29	15	12	(18)	5	41	65	0	(8)	35	(147)	40	0	28	95
GREENLEE	(14)	0	(10)	(1)	(11)	(1)	7	(1)	(1)	4	(7)	(45)	(7)	0	(1)	(88)
SANTA CRUZ	6	(31)	8	2	179	(35)	(7)	11	(13)	3	71	(24)	9	0	41	220

CHART 7
MEDICAL ASSISTANCE PROGRAM
COMPARISON OF RECIPIENTS
FOR 1999, 2000, 2001, 2002, 2003, 2004, 2005, 2006 & 2007

TOTAL RECIPIENTS



NEW SERIES WHICH INCLUDES 1931