



State of Arizona

Department of Economic Security

Family Assistance Administration

Statistical Bulletin

October, 2008

Phone: (602) 542-3678

<http://www.azdes.gov/faa/Statistics.asp>

**** STATISTICAL BULLETIN ****
ARIZONA DEPARTMENT OF ECONOMIC SECURITY
FAMILY ASSISTANCE ADMINISTRATION
BOX 6123, PHOENIX, ARIZONA 85005
PHONE (602) 542-3678

OCTOBER 2008

THIS ISSUE OF THE STATISTICAL BULLETIN COMPARES OCTOBER 2008 DATA FOR EACH OF THE INDICATED PROGRAMS WITH THE INFORMATION FOR SEPTEMBER 2008 AND OCTOBER 2007. STATEWIDE SUMMARIES OF ACTIVITY WITHIN EACH OF THE SPECIFIC PROGRAMS FOR THIS REPORT PERIOD ARE DISCUSSED BELOW. THE TABLES COMPARE CURRENT AND PRIOR MONTH DATA. DISTRICT AND COUNTY COMPARISONS ARE PROVIDED WITHIN THIS BULLETIN

CASH ASSISTANCE (CA)

COMPARING TO SEPTEMBER 2008, OCTOBER 2008 CASES INCREASED BY 452 (1.26%) TO 36,322. RECIPIENTS INCREASED BY 996 (1.31%) TO 77,243. PAYMENTS INCREASED BY \$121,325 (1.28%) TO \$9,602,909. AVERAGE PAYMENT PER CASE INCREASED BY \$0.05 (0.02%) TO \$264.38. PAYMENT PER RECIPIENT DECREASED BY \$0.03 (0.02%) TO \$124.32.

COMPARING TO OCTOBER 2007, OCTOBER 2008 CASES DECREASED BY 589 (1.60%). RECIPIENTS DECREASED BY 2,209 (2.78%). TOTAL PAYMENTS DECREASED BY \$284,346 (2.88%). THE AVERAGE PAYMENT PER CASE DECREASED BY \$3.49 (1.30%). THE AVERAGE PAYMENT PER RECIPIENT DECREASED BY \$0.12 (0.10%).

CASH ASSISTANCE UNEMPLOYED PARENT PROGRAM (CA-UP)

COMPARING TO SEPTEMBER 2008, OCTOBER 2008 CASES INCREASED BY 125 (12.25%) TO 1,145. RECIPIENTS INCREASED BY 442 (11.60%) TO 4,251. PAYMENTS INCREASED BY \$48,203 (13.26%) TO \$411,662. AVERAGE PAYMENT PER CASE INCREASED BY \$3.20 (0.90%) TO \$359.53. PAYMENT PER RECIPIENT INCREASED BY \$1.42 (1.49%) TO \$96.84.

COMPARING TO OCTOBER 2007, OCTOBER 2008 CASES INCREASED BY 442 (62.87%). RECIPIENTS INCREASED BY 1,512 (55.20%). TOTAL PAYMENTS INCREASED BY \$157,943 (62.25%). THE AVERAGE PAYMENT PER CASE DECREASED BY \$1.38 (0.38%). THE AVERAGE PAYMENT PER RECIPIENT INCREASED BY \$4.21 (4.54%).

CASH ASSISTANCE WITH GRANT UNDER \$100 (CA-MOE)

COMPARING TO SEPTEMBER 2008, OCTOBER 2008 CASES DECREASED BY 4 (0.56%) TO 706. RECIPIENTS INCREASED BY 14 (0.97%) TO 1,459. PAYMENTS INCREASED BY \$1,726 (3.40%) TO \$52,471. AVERAGE PAYMENT PER CASE INCREASED BY \$2.85 (3.99%) TO \$74.32. AVERAGE PAYMENT PER RECIPIENT INCREASED BY \$0.84 (2.39%) TO \$35.96.

COMPARING TO OCTOBER 2007, OCTOBER 2008 CASES INCREASED BY 41 (6.17%). RECIPIENTS INCREASED BY 102 (7.52%). TOTAL PAYMENTS INCREASED BY \$2,192 (4.36%). THE AVERAGE PAYMENT PER CASE DECREASED BY \$1.29 (1.71%). THE AVERAGE PAYMENT PER RECIPIENT DECREASED BY \$1.09 (2.94%).

CASH ASSISTANCE UNEMPLOYED PARENT PROGRAM WITH GRANT UNDER \$100 (CA-UP-MOE) NEW PROGRAM STARTING 7/01

COMPARING TO SEPTEMBER 2008, OCTOBER 2008 CASES DECREASED BY 2 (8.33%) TO 22. RECIPIENTS INCREASED BY 2 (2.99%) TO 69. PAYMENTS DECREASED BY \$110 (7.78%) TO \$1,304. AVERAGE PAYMENT PER CASE INCREASED BY \$0.35 (0.59%) TO \$59.27. PAYMENT PER RECIPIENT DECREASED BY \$2.20 (10.43%) TO \$18.90.

COMPARING TO OCTOBER 2007, OCTOBER 2008 CASES INCREASED BY 8 (57.14%). RECIPIENTS INCREASED BY 17 (1.20%). TOTAL PAYMENTS INCREASED BY \$467 (55.79%). THE AVERAGE PAYMENT PER CASE DECREASED BY \$0.52 (0.87%). THE AVERAGE PAYMENT PER RECIPIENT INCREASED BY \$2.80 (17.39%).

GENERAL ASSISTANCE (GA)

COMPARING TO SEPTEMBER 2008, OCTOBER 2008 CASES INCREASED BY 52 (3.50%) TO 1,536. RECIPIENTS INCREASED BY 53 (3.56%) TO 1,543. PAYMENTS INCREASED BY \$8,236 (3.71%) TO \$230,317. AVERAGE PAYMENT PER CASE INCREASED BY \$0.30 (0.20%) TO \$149.95. AVERAGE PAYMENT PER RECIPIENT INCREASED BY \$0.22 (0.15%) TO \$149.27.

COMPARING TO OCTOBER 2007, OCTOBER 2008 CASES INCREASED BY 164 (11.95%). RECIPIENTS INCREASED BY 166 (12.06%). TOTAL PAYMENTS INCREASED BY \$19,406 (9.20%). THE AVERAGE PAYMENT PER CASE DECREASED BY \$3.78 (2.46%). THE AVERAGE PAYMENT PER RECIPIENT DECREASED BY \$3.90 (2.54%).

TUBERCULOSIS CONTROL PROGRAM (TC)

COMPARING TO SEPTEMBER 2008, OCTOBER 2008 CASES DECREASED BY 1 (14.29%) TO 6. RECIPIENTS DECREASED BY 1 (14.29%) TO 6. PAYMENTS DECREASED BY \$178 (21.68%) TO \$643. AVERAGE PAYMENT PER CASE DECREASED BY \$10.12 (8.62%) TO \$107.17. AVERAGE PAYMENT PER RECIPIENT DECREASED BY \$10.12 (8.62%) TO \$107.17.

COMPARING TO OCTOBER 2007, OCTOBER 2008 CASES DECREASED BY 7 (53.85%). RECIPIENTS DECREASED BY 7 (53.85%). TOTAL PAYMENTS DECREASED BY \$812 (55.81%). THE AVERAGE PAYMENT PER CASE DECREASED BY \$4.75 (4.25%). THE AVERAGE PAYMENT PER RECIPIENT DECREASED BY \$4.75 (4.25%).

FOOD STAMP PROGRAM (FS)

COMPARING TO SEPTEMBER 2008, OCTOBER 2008 FOOD STAMP HOUSEHOLDS INCREASED BY 9,174 (3.24%) TO 292,065. PERSONS RECEIVING FOOD STAMPS INCREASED BY 20,671 (3.01%) TO 706,577. TOTAL COUPON ISSUANCE INCREASED BY \$10,342,428 (14.98%) TO \$79,405,894. THE AVERAGE HOUSEHOLD ALLOTMENT INCREASED BY \$27.75 (11.36%) TO \$271.88. THE AVERAGE ALLOTMENT PER PERSON INCREASED BY \$11.69 (11.61%) TO \$112.38.

COMPARING TO OCTOBER 2007, OCTOBER 2008 FOOD STAMP HOUSEHOLDS INCREASED BY 52,232 (21.78%). PERSONS RECEIVING FOOD STAMPS INCREASED BY 120,857 (20.63%). TOTAL COUPON ISSUANCE INCREASED BY \$18,573,939 (30.53%). THE AVERAGE ALLOTMENT PER HOUSEHOLD INCREASED BY \$18.24 (7.19%). THE AVERAGE ALLOTMENT PER PERSON INCREASED BY \$8.52 (8.20%).

MEDICAL ASSISTANCE PROGRAM (MA) NEW TABLE INCLUDES PROP. 204 CATEGORIES

COMPARING TO SEPTEMBER 2008, OCTOBER 2008 TOTAL RECIPIENTS TOTAL RECIPIENTS INCREASED BY 13,206 (1.34%). SOBRA WOMEN AT 140% FPL DECREASED BY 7 (0.06%). SOBRA CHILDREN INCREASED BY 1,039 (1.62%). ADULTS W/O CHILD AT 100% INCREASED BY 765 (1.85%). FOSTER CARE INCREASED BY 63 (0.59%). 1931 AT 36% FPL INCREASED BY 4,275 (1.51%). EMERGENCY SERVICES INCREASED BY 442 (0.53%). INFANTS DECREASED BY 424 (0.84%). ADULT W/O CHILD AT 140% INCREASED BY 1,234 (1.18%). MEDICAL W/SPEND DOWN INCREASED BY 336 (6.08%). SOBRA WOMAN AT 100% DECREASED BY 1 (0.03%). SOBRA CHILD AT 100% INCREASED BY 3,174 (1.84%). TRANSITIONAL MEDICAL INCREASED BY 295 (0.70%). 1931 AT 100% INCREASED BY 1,614 (1.93%). YATI INCREASED BY 4 (1.53%). ALL OTHER CATEGORIES INCREASED BY 397 (1.61%).

COMPARING TO OCTOBER 2007, OCTOBER 2008 TOTAL RECIPIENTS TOTAL RECIPIENTS INCREASED BY 79,401 (8.66%). SOBRA WOMEN AT 140% FPL INCREASED BY 161 (1.36%). SOBRA CHILDREN INCREASED BY 3,181 (5.14%). ADULTS W/O CHILD AT 100% INCREASED BY 4,390 (11.64%). FOSTER CARE INCREASED BY 1,226 (12.94%). 1931 AT 36% FPL INCREASED BY 28,380 (10.93%). EMERGENCY SERVICES DECREASED BY 2,198 (2.55%). INFANTS DECREASED BY 1,386 (2.71%). ADULT W/O CHILD AT 140% INCREASED BY 17,189 (19.49%). MEDICAL W/SPEND DOWN INCREASED BY 397 (7.26%). SOBRA WOMAN AT 100% INCREASED BY 199 (5.74%). SOBRA CHILD AT 100% INCREASED BY 16,446 (10.31%). TRANSITIONAL MEDICAL DECREASED BY 494 (1.15%). 1931 AT 100% INCREASED BY 8,870 (11.61%). YATI INCREASED BY 13 (5.16%). ALL OTHER CATEGORIES INCREASED BY 3,027 (13.70%).

TANF SUMMARY

TABLES 1, 1A, 1B, & 1C: ARIZONA 1

	OCTOBER 2008							SEPTEMBER 2008			OCTOBER 2007		
	FAMILIES (CASES)	PERSONS (RECIP.)	ADULTS	CHILDREN	TOTAL PAYMENTS	AVERAGE PAYMENT/ CASE	AVERAGE PAYMENT/ RECIP.	FAMILIES (CASES)	PERSONS (RECIP.)	TOTAL PAYMENTS	FAMILIES (CASES)	PERSONS (RECIP.)	TOTAL PAYMENTS
ARIZONA	38,195	83,022	20,528	62,494	10,068,346	263.60	121.27	571	1,454	171,144	(98)	(578)	(123,744)
DISTRICT I													
MARICOPA	21,821	48,135	11,230	36,905	5,805,354	266.04	120.61	387	930	116,835	1,011	2,254	226,227
DISTRICT II													
PIMA	6,927	14,384	3,709	10,675	1,795,664	259.23	124.84	75	219	22,108	(487)	(1,295)	(153,095)
DISTRICT III													
APACHE	89	189	54	135	22,169	249.09	117.30	0	4	(1,064)	(62)	(145)	(16,038)
COCONINO	254	555	139	416	63,084	248.36	113.66	14	36	3,117	(19)	(27)	(3,762)
NAVAJO	1,307	3,183	924	2,259	363,787	278.34	114.29	(2)	(24)	984	(103)	(259)	(25,916)
YAVAPAI	699	1,361	287	1,074	170,954	244.57	125.61	9	41	3,274	7	5	214
DISTRICT IV													
LA PAZ	217	470	149	321	53,727	247.59	114.31	4	26	328	(31)	(63)	(9,810)
MOHAVE	1,371	2,922	856	2,066	353,334	257.72	120.92	15	57	4,354	(57)	(123)	(20,852)
YUMA	1,158	2,601	595	2,006	305,897	264.16	117.61	24	74	8,310	(201)	(439)	(57,985)
DISTRICT V													
GILA	738	1,518	545	973	192,307	260.58	126.68	(7)	(10)	228	(41)	(169)	(16,206)
PINAL	1,925	4,251	1,130	3,121	504,174	261.91	118.60	42	27	7,711	(116)	(379)	(47,356)
DISTRICT VI													
COCHISE	1,024	2,056	541	1,515	265,519	259.30	129.14	2	31	1,524	41	121	13,167
GRAHAM	326	643	191	452	81,569	250.21	126.86	(12)	(19)	(2,903)	(54)	(109)	(16,008)
GREENLEE	29	54	13	41	6,718	231.66	124.41	1	6	103	(26)	(64)	(8,467)
SANTA CRUZ	310	700	165	535	84,089	271.25	120.13	19	56	6,235	40	114	12,143

1/EXCLUDES: PRIOR MONTH NET TOTALS OF 2,347 CASES; 5,759 RECIPIENTS; \$495,117.
 1/GRANT DIVERSION TOTALS OF: 243 CASES;\$259,091.
 ZERO PAY TOTALS OF 810 CASES; 2,482 RECIPIENTS.

	CURRENT MO. CASES	CURRENT MO. RECIP.	CURRENT MO. DOLLARS	PRIOR MO. CASES	PRIOR MO. RECIP	PRIOR MO. DOLLARS
PASQUA/YAQUI	305	876	\$93,542	20	66	5,072
WM APACHE	692	1,846	\$208,823	18	54	3,099
SALT RIVER	95	332	\$29,923	6	22	1,314
SAN CARLOS	696	1,461	\$182,425	17	37	1,708
HOPAI	135	376	\$31,456	2	9	379
TOTAL	1,923	4,891	\$546,169	63	188	\$11,572

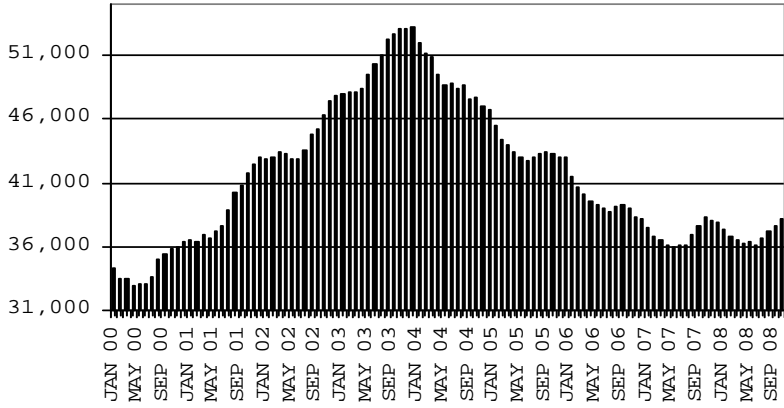
TANF SUMMARY

TABLES 1, 1A, 1B, & 1C

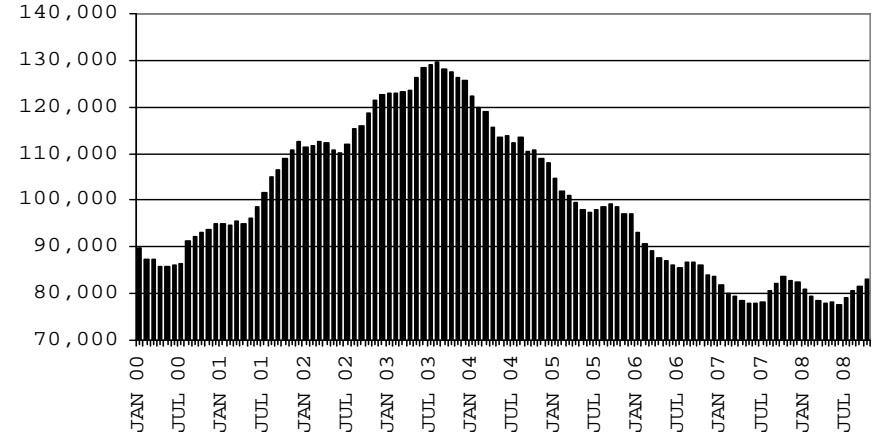
COMPARISON OF CASES, RECIPIENTS, PAYMENTS & AVERAGE PAYMENTS

FOR 2000, 2001, 2002, 2003, 2004, 2005, 2006, & 2007

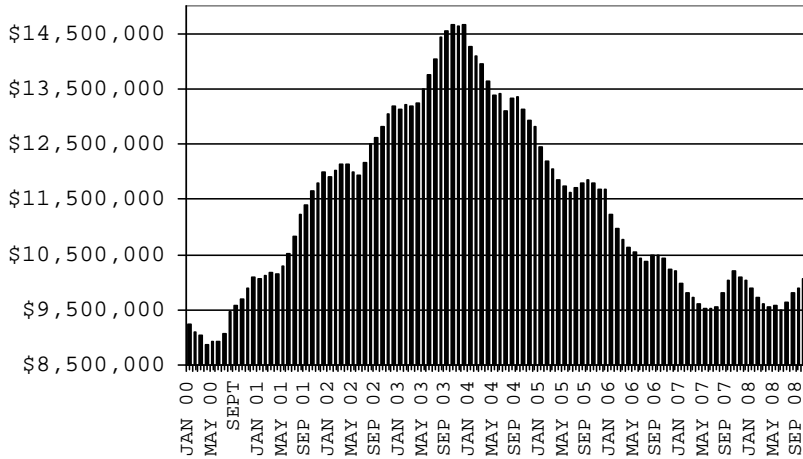
CASES



RECIPIENTS



PAYMENTS



AVERAGE PAYMENTS PER RECIPIENT

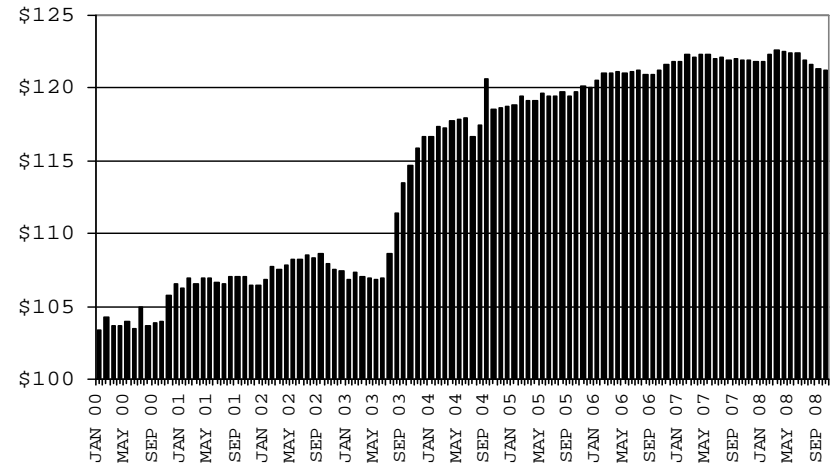


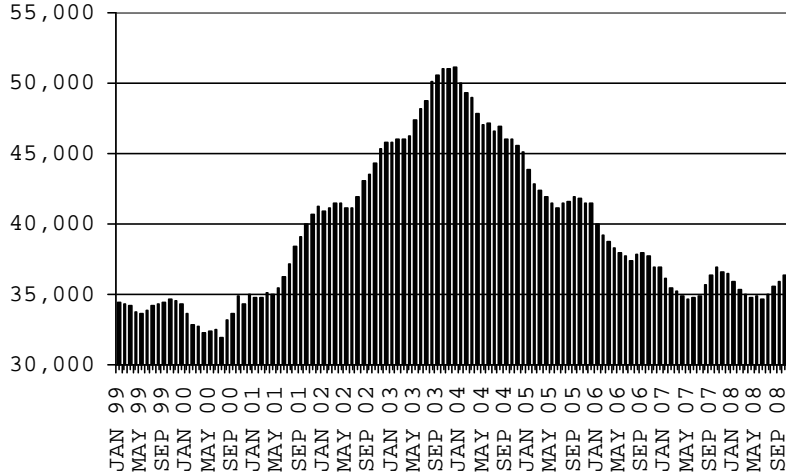
CHART 1

CASH ASSISTANCE PROGRAM

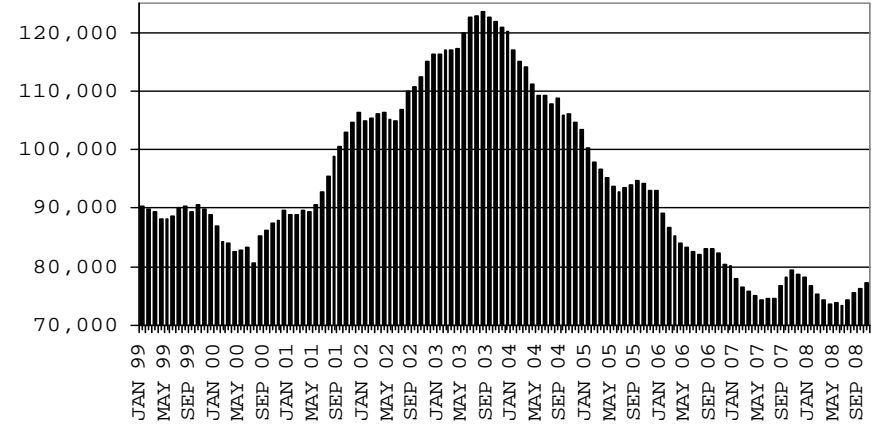
COMPARISON OF CASES, RECIPIENTS, PAYMENTS & AVERAGE PAYMENTS

FOR 1999, 2000, 2001, 2002, 2003, 2004, 2005, 2006 & 2007

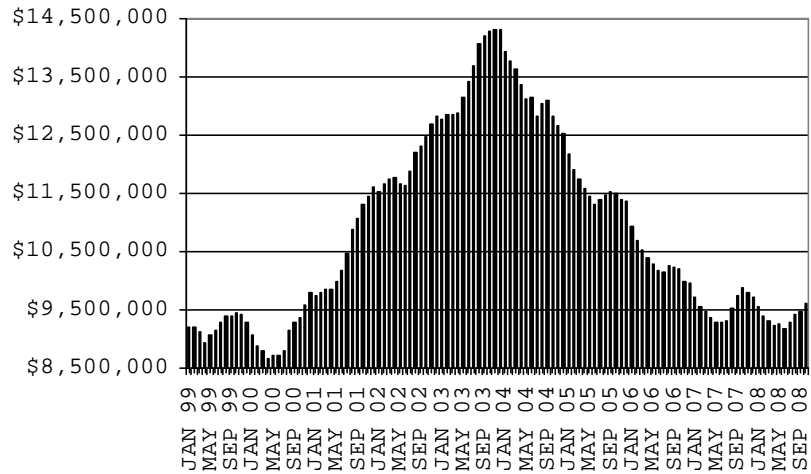
CASES



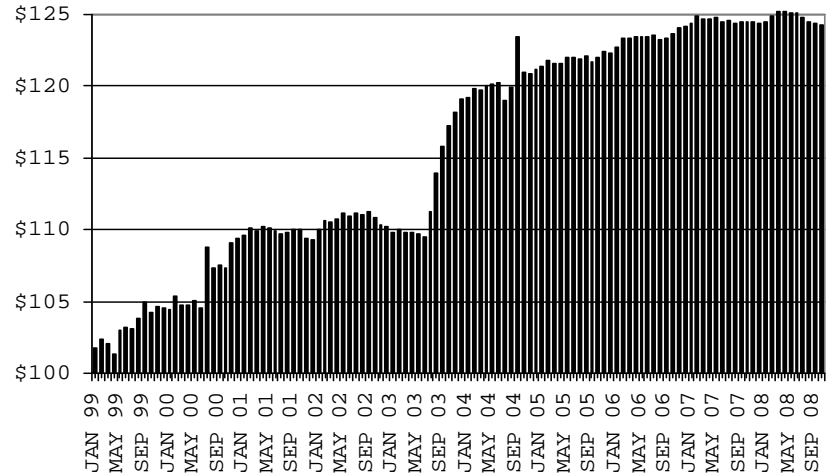
RECIPIENTS



PAYMENTS



AVERAGE PAYMENTS PER RECIPIENT



**TABLE 1A
CA-UP**

CASH ASSISTANCE UNEMPLOYED PARENT PROGRAM: ARIZONA 1

	OCTOBER 2008							CHANGE FROM			OCTOBER 2007		
	FAMILIES (CASES)	PERSONS (RECIP.)	ADULTS	CHILDREN	TOTAL PAYMENTS	AVERAGE PAYMENT/ CASE	AVERAGE PAYMENT/ RECIP.	FAMILIES (CASES)	PERSONS (RECIP.)	TOTAL PAYMENTS	FAMILIES (CASES)	PERSONS (RECIP.)	TOTAL PAYMENTS
ARIZONA	1,145	4,251	1,719	2,532	411,662	359.53	96.84	125	442	48,203	442	1,512	157,943
DISTRICT I													
MARICOPA	662	2,389	879	1,510	236,174	356.76	98.86	113	400	42,580	389	1,327	137,274
DISTRICT II													
PIMA	183	698	299	399	65,583	358.38	93.96	15	60	5,699	56	217	21,537
DISTRICT III													
APACHE	3	11	6	5	1,183	394.33	107.55	(3)	(13)	(933)	(1)	(7)	(214)
COCONINO	5	19	10	9	1,864	372.80	98.11	(2)	(6)	(369)	2	3	818
NAVAJO	74	316	140	176	29,689	401.20	93.95	(3)	(12)	(1,829)	3	28	3,262
YAVAPAI	6	15	4	11	1,503	250.50	100.20	1	3	327	(4)	(30)	(2,065)
DISTRICT IV													
LA PAZ	8	31	15	16	2,801	350.13	90.35	3	13	869	1	3	417
MOHAVE	59	233	112	121	21,913	371.41	94.05	5	26	2,097	14	59	5,237
YUMA	39	147	62	85	14,760	378.46	100.41	1	2	1,634	(7)	(31)	(2,516)
DISTRICT V													
GILA	5	23	10	13	2,009	401.80	87.35	2	14	1,200	(32)	(111)	(11,513)
PINAL	74	277	136	141	25,559	345.39	92.27	(7)	(50)	(3,874)	20	56	5,493
DISTRICT VI													
COCHISE	13	39	22	17	3,867	297.46	99.15	(2)	(7)	(177)	(2)	(16)	(884)
GRAHAM	4	14	8	6	1,530	382.50	109.29	0	(1)	312	(5)	(17)	(1,578)
GREENLEE	1	4	2	2	103	103.00	25.75	1	4	103	1	4	103
SANTA CRUZ	9	35	14	21	3,124	347.11	89.26	1	9	564	7	27	2,572

1/EXCLUDES: PRIOR MONTH NET TOTALS OF: 153 CASES; 616 RECIPIENTS; \$56,958.
GRANT DIVERSION TOTALS OF: 0 CASES; \$0.
ZERO PAY TOTALS OF 19 CASES; 92 RECIPIENTS.

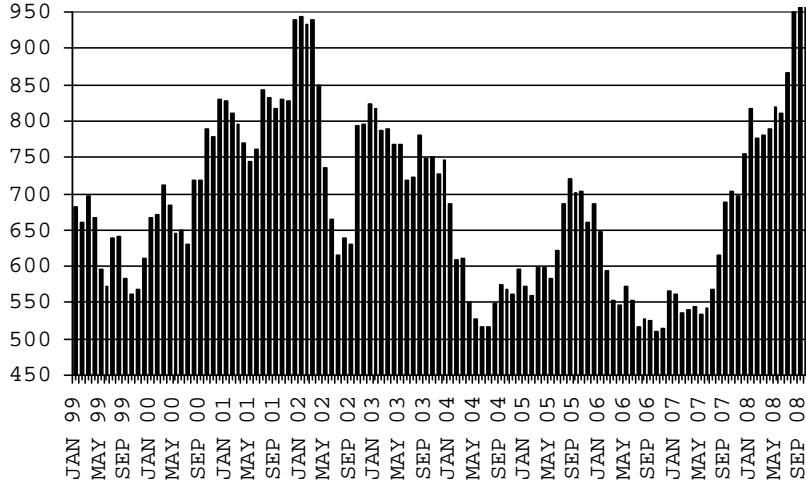
	CURRENT MO. CASES	CURRENT MO. RECIP.	CURRENT MO. DOLLARS	PRIOR MO. CASES	PRIOR MO. RECIP.	PRIOR MO. DOLLARS
PASQUAYUAQUI	15	72	5,990	2	7	107
WM APACHE	48	214	20,086	7	28	1,605
SALT RIVER	0	0	0	0	0	0
SAN CARLOS	0	0	0	0	0	0
HOPÍ	0	0	0	0	0	0
TOTAL	63	286	26,076	9	35	1,712

CASES WITH GRANT UNDER \$100 (SEE TABLE 1C).

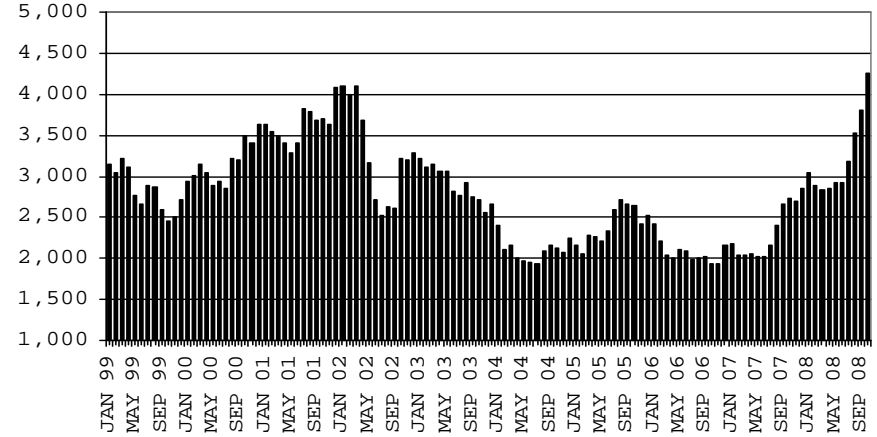
CHART 1A

CASH ASSISTANCE UNEMPLOYED PARENT PROGRAM COMPARISON OF CASES, RECIPIENTS, PAYMENTS & AVERAGE PAYMENTS FOR 1999, 2000, 2001, 2002, 2003, 2004, 2005, 2006 & 2007

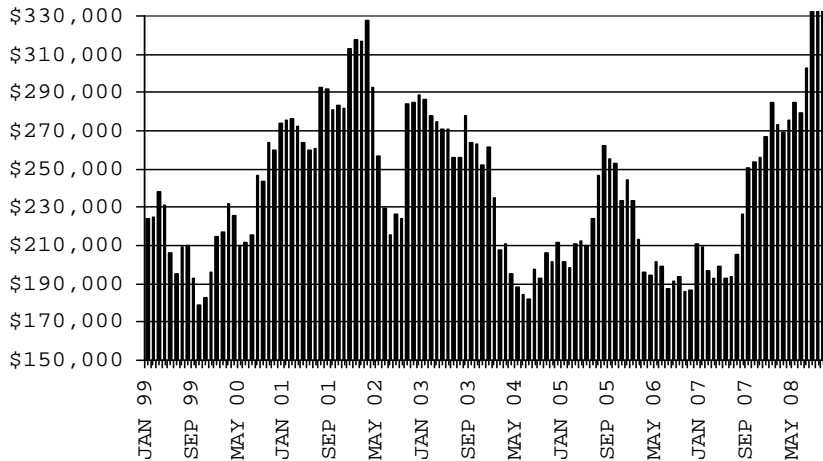
CASES



RECIPIENTS



PAYMENTS



AVERAGE PAYMENTS PER RECIPIENT

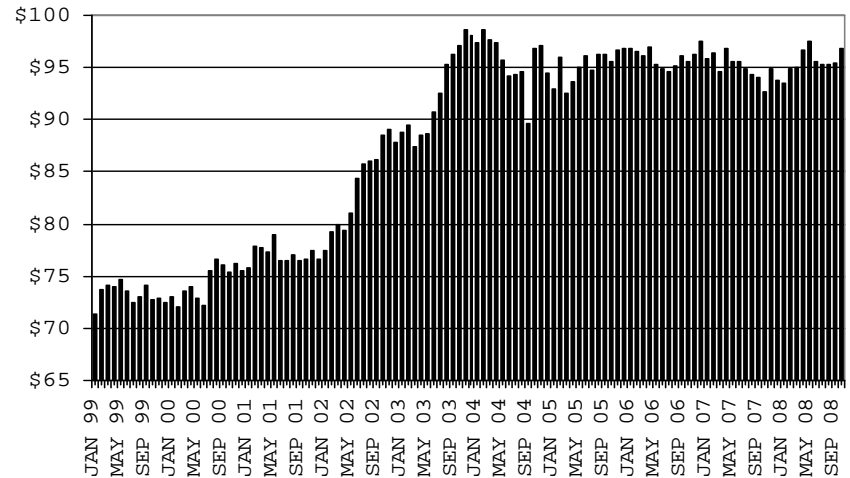


TABLE 1B 1/

**CASH ASSISTANCE: ARIZONA
CASES WITH GRANT UNDER \$100**

	OCTOBER 2008							CHANGE FROM					
								SEPTEMBER 2008			OCTOBER 2007		
	FAMILIES (CASES)	PERSONS (RECIP.)	ADULTS	CHILDREN	TOTAL PAYMENTS	AVERAGE PAYMENT/ CASE	AVERAGE PAYMENT/ RECIP.	FAMILIES (CASES)	PERSONS (RECIP.)	TOTAL PAYMENTS	FAMILIES (CASES)	PERSONS (RECIP.)	TOTAL PAYMENTS
ARIZONA	706	1,459	385	1,074	52,471	74.32	35.96	(4)	14	1,726	41	102	2,192
DISTRICT I													
MARICOPA	406	851	213	638	28,842	71.04	33.89	(16)	(29)	75	37	75	1,783
DISTRICT II													
PIMA	124	239	75	164	10,251	82.67	42.89	9	15	1,699	(2)	(7)	657
DISTRICT III													
APACHE	6	16	5	11	494	82.33	30.88	4	14	309	(5)	(4)	(438)
COCONINO	7	19	4	15	537	76.71	28.26	0	4	(1)	2	8	266
NAVAJO	9	16	4	12	619	68.78	38.69	(1)	(5)	(152)	4	2	328
YAVAPAI	18	31	6	25	1,171	65.06	37.77	0	1	(262)	2	(3)	348
DISTRICT IV													
LA PAZ	11	25	9	16	810	73.64	32.40	8	19	507	7	19	575
MOHAVE	36	74	23	51	2,625	72.92	35.47	1	3	(40)	2	17	203
YUMA	22	53	12	41	1,750	79.55	33.02	(3)	2	(507)	0	12	(110)
DISTRICT V													
GILA	38	83	21	62	3,138	82.58	37.81	(6)	(10)	(161)	(9)	(29)	(1,720)
PINAL	2	2	1	1	246	123.00	123.00	(6)	(11)	(369)	(12)	(30)	(1,165)
TOTAL	36	81	20	61	2,892	80.33	35.70	0	1	208	3	1	(555)
DISTRICT VI													
COCHISE	29	52	13	39	2,234	77.03	42.96	0	0	259	3	12	300
GRAHAM	16	26	4	22	1,432	89.50	55.08	(4)	(10)	(80)	0	3	(56)
GREENLEE	7	13	4	9	422	60.29	32.46	3	8	261	1	6	147
SANTA CRUZ	0	0	0	0	0	0.00	0.00	(1)	(3)	(73)	0	0	0
TOTAL	6	13	5	8	380	63.33	29.23	2	5	151	2	3	209

EXCLUDES: PRIOR MONTH NET TOTALS OF 837 CASES; 1,743 RECIPIENTS; \$53,474.

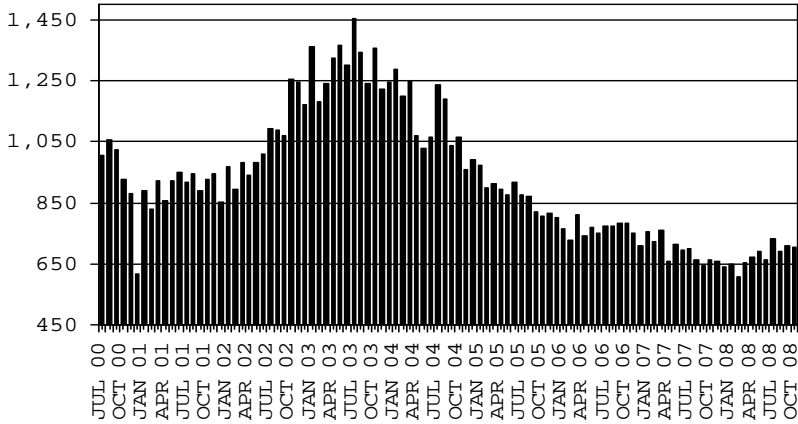
CHART 1B

CASH ASSISTANCE PROGRAM CASES WITH GRANT UNDER \$100

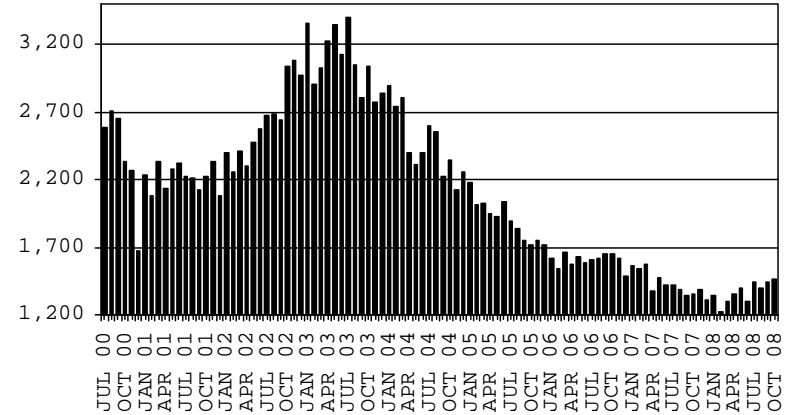
COMPARISON OF CASES, RECIPIENTS, PAYMENTS & AVERAGE PAYMENTS

FOR 2000, 2001, 2002, 2003, 2004, 2005, 2006 & 2007

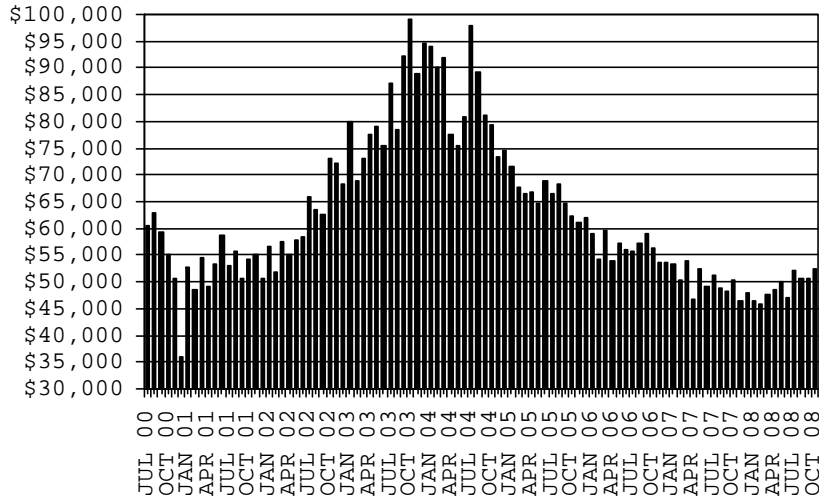
CASES



RECIPIENTS



PAYMENTS



AVERAGE PAYMENTS PER RECIPIENT

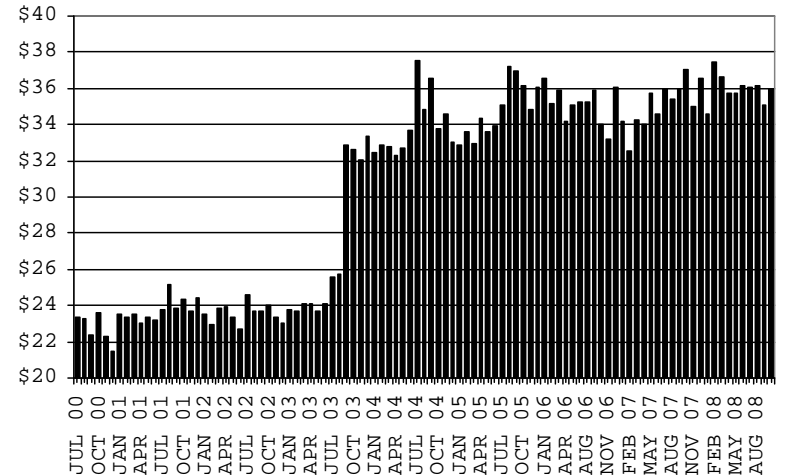


TABLE 1C 1/

CASH ASSISTANCE UNEMPLOYED PARENT PROGRAM: ARIZONA
CASES WITH GRANT UNDER \$100

	OCTOBER 2008							CHANGE FROM			OCTOBER 2007		
					AVERAGE	AVERAGE	SEPTEMBER 2008			OCTOBER 2007			
	FAMILIES (CASES)	PERSONS (RECIP.)	ADULTS	CHILDREN	TOTAL PAYMENTS	PAYMENT/ CASE	PAYMENT/ RECIP.	FAMILIES (CASES)	PERSONS (RECIP.)	TOTAL PAYMENTS	FAMILIES (CASES)	PERSONS (RECIP.)	TOTAL PAYMENTS
ARIZONA	22	69	23	46	1,304	59.27	18.90	(2)	2	(110)	8	17	467
DISTRICT I													
MARICOPA	12	32	8	24	649	54.08	20.28	(4)	(5)	(320)	7	14	344
DISTRICT II													
PIMA	3	11	6	5	186	62.00	16.91	(1)	(5)	17	(1)	(8)	(58)
DISTRICT III													
APACHE	0	0	0	0	0	0.00	0.00	0	0	0	0	0	0
COCONINO	1	5	2	3	56	56.00	11.20	1	5	56	1	5	56
NAVAJO	0	0	0	0	0	0.00	0.00	0	0	0	(1)	(4)	(95)
YAVAPAI	1	1	0	1	97	97.00	97.00	0	0	0	1	1	97
DISTRICT IV													
LA PAZ	1	5	2	3	24	24.00	4.80	0	0	0	1	5	24
MOHAVE	1	5	2	3	77	77.00	15.40	0	0	0	(1)	1	6
YUMA	2	7	1	6	158	79.00	22.57	1	4	80	1	5	115
DISTRICT V													
GILA	0	0	0	0	0	0.00	0.00	0	0	0	0	0	0
PINAL	1	3	2	1	57	57.00	19.00	1	3	57	0	(2)	(22)
DISTRICT VI													
COCHISE	0	0	0	0	0	0.00	0.00	0	0	0	0	0	0
GRAHAM	0	0	0	0	0	0.00	0.00	0	0	0	0	0	0
GREENLEE	0	0	0	0	0	0.00	0.00	0	0	0	0	0	0
SANTA CRUZ	0	0	0	0	0	0.00	0.00	0	0	0	0	0	0

EXCLUDES: PRIOR MONTH NET TOTALS OF 55 CASES; 173 RECIPIENTS; \$2,971.

CHART 1C

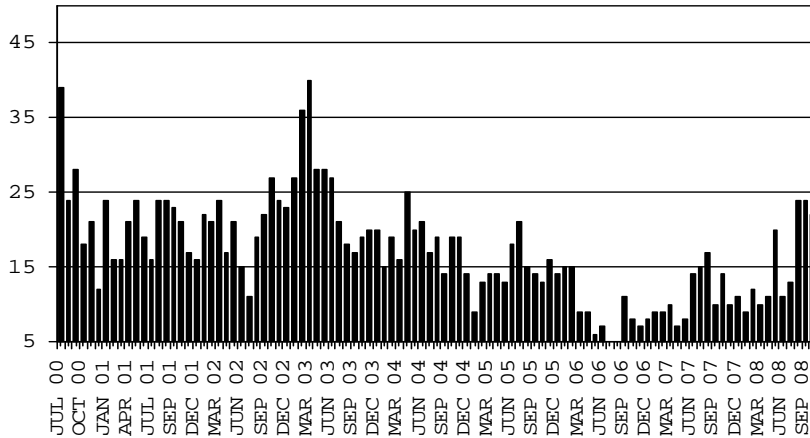
CASH ASSISTANCE UNEMPLOYED PARENT PROGRAM

CASES WITH GRANT UNDER \$100

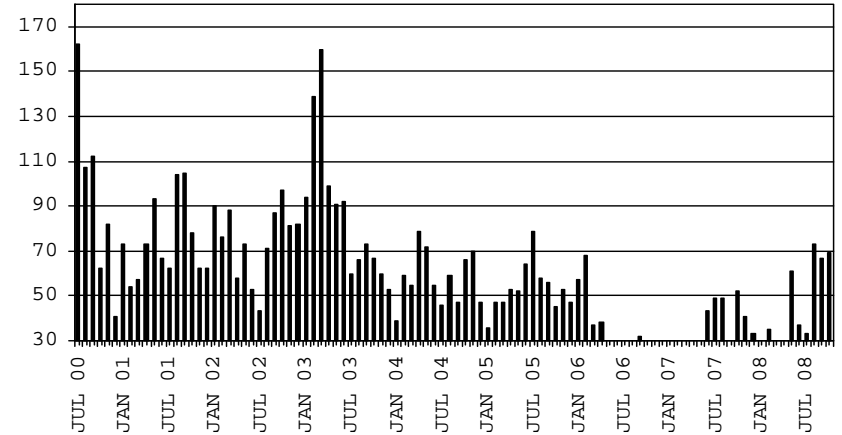
COMPARISON OF CASES, RECIPIENTS, PAYMENTS & AVERAGE PAYMENTS

FOR 2000, 2001, 2002, 2003, 2004, 2005, 2006 & 2007

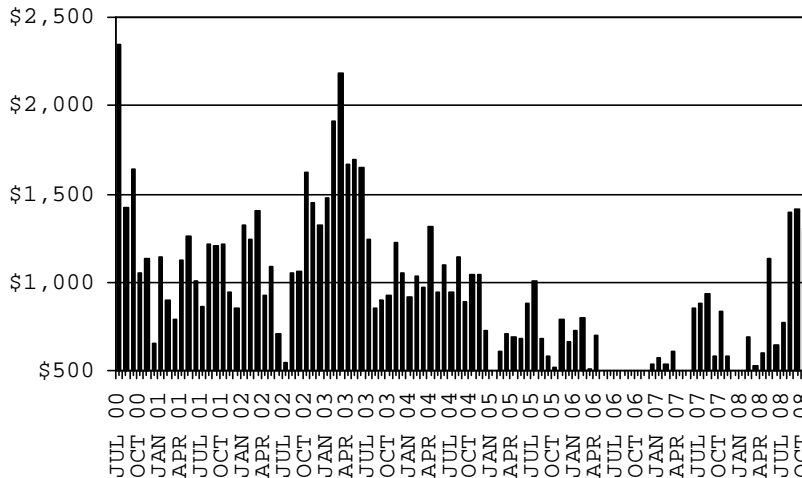
CASES



RECIPIENTS



PAYMENTS



AVERAGE PAYMENTS PER RECIPIENT

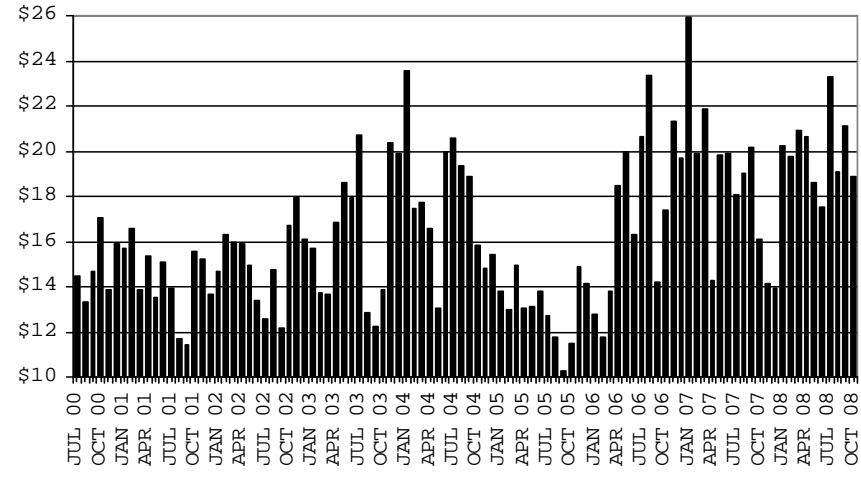


TABLE 2
GENERAL ASSISTANCE: ARIZONA 1,

	CHANGE FROM										
	OCTOBER 2008					SEPTEMBER 2008			OCTOBER 2007		
	NUMBER OF CASES	PERSONS (RECIP.)	TOTAL PAYMENTS	AVERAGE PAYMENT/ CASE	AVERAGE PAYMENT/ RECIP.	NUMBER OF CASES	PERSONS (RECIP.)	TOTAL PAYMENTS	NUMBER OF CASES	PERSONS (RECIP.)	TOTAL PAYMENTS
ARIZONA	1,536	1,543	230,317	149.95	149.27	52	53	8,236	164	166	19,406
DISTRICT I											
MARICOPA	666	668	98,828	148.39	147.95	43	44	6,394	85	87	9,585
DISTRICT II											
PIMA	389	392	58,796	151.15	149.99	6	6	1,503	33	36	5,290
DISTRICT III											
APACHE	11	11	1,538	139.82	139.82	4	4	457	3	2	224
COCONINO	25	25	3,480	139.20	139.20	1	1	43	2	1	91
NAVAJO	33	34	4,598	139.33	135.24	0	0	(238)	(7)	(6)	(1,511)
YAVAPAI	72	72	10,526	146.19	146.19	1	1	(204)	18	17	2,192
DISTRICT IV											
LA PAZ	8	8	1,183	147.88	147.88	(2)	(2)	(4)	(6)	(7)	(844)
MOHAVE	120	121	18,903	157.53	156.22	3	3	510	54	54	8,488
YUMA	41	41	5,402	131.76	131.76	5	5	899	12	12	1,360
DISTRICT V											
GILA	8	8	1,124	140.50	140.50	(4)	(4)	(497)	(23)	(23)	(3,654)
PINAL	94	94	14,457	153.80	153.80	(2)	(2)	(238)	(8)	(8)	(2,275)
DISTRICT VI											
COCHISE	55	55	9,125	165.91	165.91	(5)	(5)	(735)	3	3	645
GRAHAM	8	8	1,319	164.88	164.88	0	0	0	(1)	(1)	(173)
GREENLEE	1	1	173	173.00	173.00	0	0	0	(2)	(2)	(281)
SANTA CRUZ	5	5	865	173.00	173.00	2	2	346	1	1	269

1/EXCLUDES: PRIOR MONTH NET TOTALS OF : 292 CASES; 293 RECIPIENTS; \$76,619.
REFUGEE RESETTLEMENT PROGRAM: 402 CASES; 600 RECIPIENTS; \$115,760.

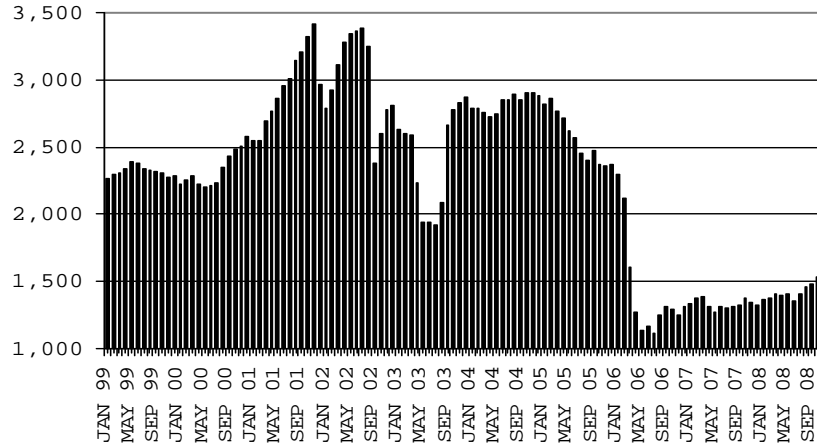
CHART 2

GENERAL ASSISTANCE PROGRAM

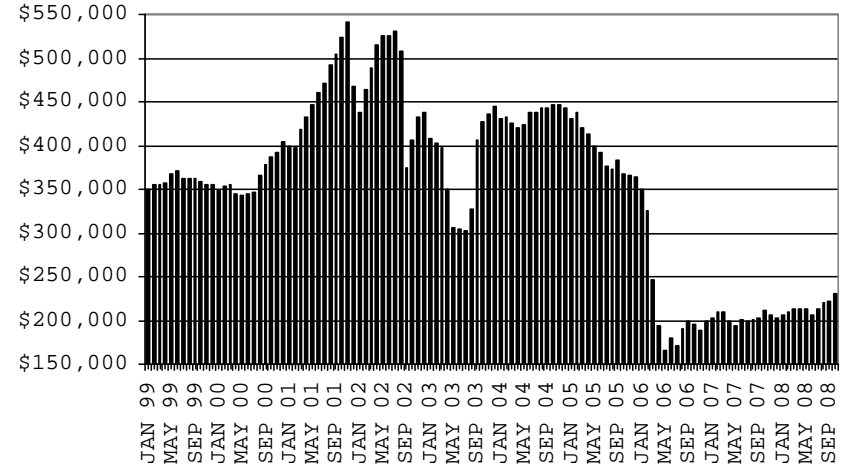
COMPARISON OF CASES, PAYMENTS & AVERAGE PAYMENTS

FOR 1999, 2000, 2001, 2002, 2003, 2004, 2005, 2006 & 2007

CASES



PAYMENTS



AVERAGE PAYMENT PER CASE

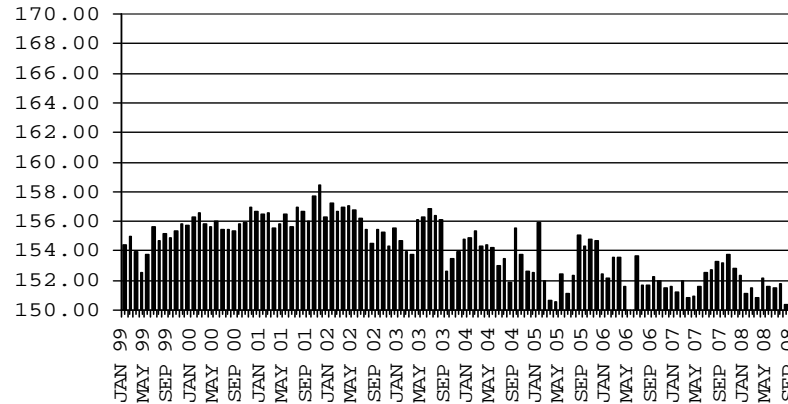


TABLE 4

TUBERCULOSIS CONTROL: ARIZONA 1/

	OCTOBER 2008					CHANGE FROM					
						SEPTEMBER 2008			OCTOBER 2007		
	NUMBER OF CASES	PERSONS (RECIP.)	TOTAL PAYMENTS	AVERAGE PAYMENT/ CASE	AVERAGE PAYMENT/ RECIP.	NUMBER OF CASES	PERSONS (RECIP.)	TOTAL PAYMENTS	NUMBER OF CASES	PERSONS (RECIP.)	TOTAL PAYMENTS
ARIZONA	6	6	643	107.17	107.17	(1)	(1)	(178)	(7)	(7)	(812)
DISTRICT I											
MARICOPA	6	6	643	107.17	107.17	(1)	(1)	(178)	(6)	(6)	(704)
DISTRICT II											
PIMA	0	0	0	0.00	0.00	0	0	0	0	0	0
DISTRICT III	0	0	0	0	0.00	0	0	0	(1)	(1)	(108)
APACHE	0	0	0	0.00	0.00	0	0	0	0	0	0
COCONINO	0	0	0	0.00	0.00	0	0	0	0	0	0
NAVAJO	0	0	0	0.00	0.00	0	0	0	0	0	0
YAVAPAI	0	0	0	0.00	0.00	0	0	0	(1)	(1)	(108)
DISTRICT IV	0	0	0	0.00	0.00	0	0	0	0	0	0
LA PAZ	0	0	0	0.00	0.00	0	0	0	0	0	0
MOHAVE	0	0	0	0.00	0.00	0	0	0	0	0	0
YUMA	0	0	0	0.00	0.00	0	0	0	0	0	0
DISTRICT V	0	0	0	0.00	0.00	0	0	0	0	0	0
GILA	0	0	0	0.00	0.00	0	0	0	0	0	0
PINAL	0	0	0	0.00	0.00	0	0	0	0	0	0
DISTRICT VI	0	0	0	0.00	0.00	0	0	0	0	0	0
COCHISE	0	0	0	0.00	0.00	0	0	0	0	0	0
GRAHAM	0	0	0	0.00	0.00	0	0	0	0	0	0
GREENLEE	0	0	0	0.00	0.00	0	0	0	0	0	0
SANTA CRUZ	0	0	0	0.00	0.00	0	0	0	0	0	0

1/EXCLUDES: PRIOR MONTH NET TOTALS OF : 0 CASES; 0 RECIPIENTS; \$0.

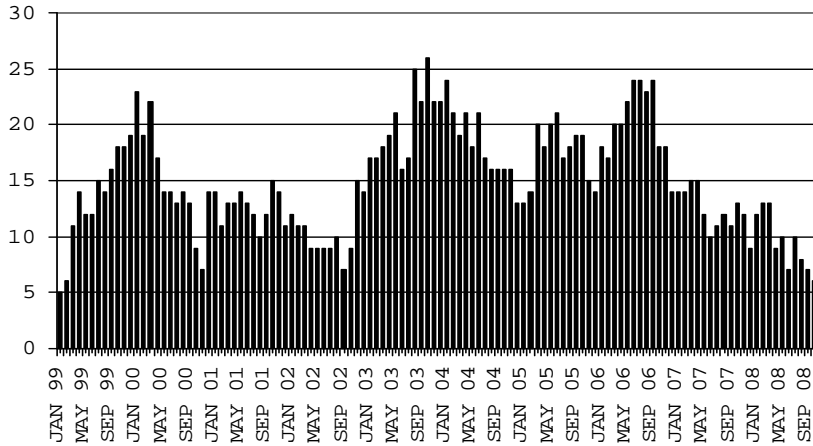
CHART 4

TUBERCULOSIS CONTROL PROGRAM

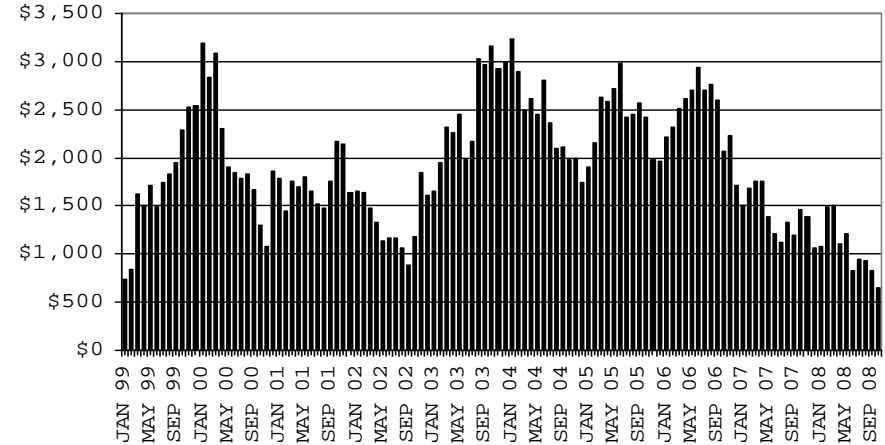
COMPARISON OF CASES, PAYMENTS & AVERAGE PAYMENTS

FOR 1999, 2000, 2001, 2002, 2003, 2004, 2005, 2006 & 2007

CASES



PAYMENTS



AVERAGE PAYMENT PER CASE

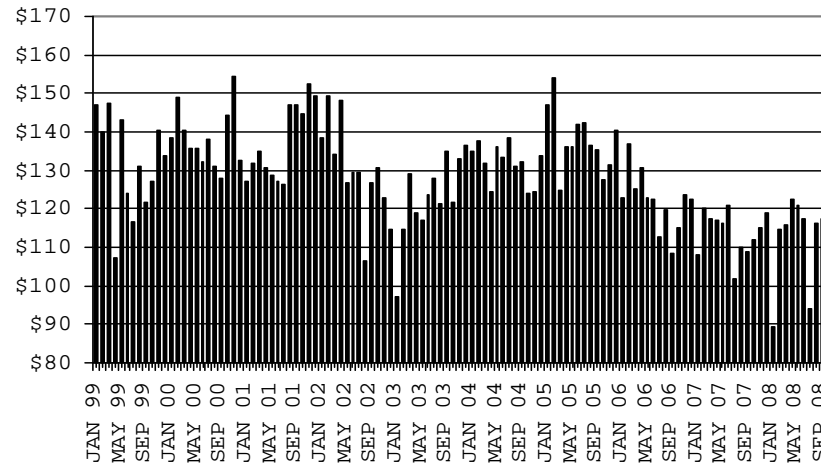


TABLE 6

FOOD STAMP PROGRAM: ARIZONA 1/

	CHANGE FROM										
	OCTOBER 2008					SEPTEMBER 2008			OCTOBER 2007		
	HOUSEHOLDS	PERSONS	TOTAL COUPON ISSUANCE	AVERAGE ALLOT./ HOUSEHOLD	AVERAGE ALLOT./ PERSON	HOUSEHOLDS	PERSONS	TOTAL COUPON ISSUANCE	HOUSEHOLDS	PERSONS	TOTAL COUPON ISSUANCE
ARIZONA	292,065	706,577	79,405,894	271.88	112.38	9,174	20,671	10,342,428	52,232	120,857	18,573,939
DISTRICT I											
MARICOPA	149,343	363,774	41,766,914	279.67	114.82	5,124	11,932	5,613,189	30,133	72,916	10,938,973
DISTRICT II											
PIMA	51,358	116,297	13,115,117	255.37	112.77	1,428	3,001	1,675,193	8,541	18,086	2,873,550
DISTRICT III											
APACHE	6,746	20,183	2,178,725	322.97	107.95	123	223	227,135	481	663	266,659
COCONINO	6,276	17,886	1,858,592	296.14	103.91	179	247	208,741	887	1,992	322,740
NAVAJO	10,489	29,004	3,106,876	296.20	107.12	194	381	343,695	1,141	2,631	497,533
YAVAPAI	8,501	17,488	1,931,535	227.21	110.45	344	650	281,257	1,983	4,190	575,060
DISTRICT IV											
LA PAZ	1,436	3,117	350,876	244.34	112.57	22	81	40,913	167	281	56,787
MOHAVE	13,606	28,175	3,217,231	236.46	114.19	501	1,037	442,533	2,819	5,254	795,696
YUMA	11,918	32,134	3,266,076	274.05	101.64	238	579	382,003	1,359	3,383	469,953
DISTRICT V											
GILA	4,045	9,276	1,045,764	258.53	112.74	117	228	129,330	536	1,054	181,248
PINAL	14,935	37,860	4,234,334	283.52	111.84	578	1,554	580,654	2,627	6,884	1,001,959
DISTRICT VI											
COCHISE	7,996	17,642	1,887,576	236.07	106.99	199	431	228,375	1,126	2,397	360,699
GRAHAM	2,022	4,735	519,874	257.11	109.79	(26)	(85)	50,338	(78)	(248)	27,626
GREENLEE	236	463	51,266	217.23	110.73	0	(14)	4,833	(20)	(86)	(4,941)
SANTA CRUZ	3,158	8,543	875,138	277.12	102.44	153	426	134,239	530	1,460	210,397

1/EXCLUDES: PRIOR MONTH NET TOTALS OF : 10,392 CASES; 27,826 RECIPIENTS; \$1,497,744.
 AGED CANCELATIONS: 0 CASES; 0 RECIPIENTS; 0.
 FS COUPON CONVERSIONS: 0 CASES; 0 RECIPIENTS; \$0.
 FS REINSTATED: 0 CASES; \$0.
 FS ZERO PAY: 8,189 CASES; 33,970 RECIPIENTS.

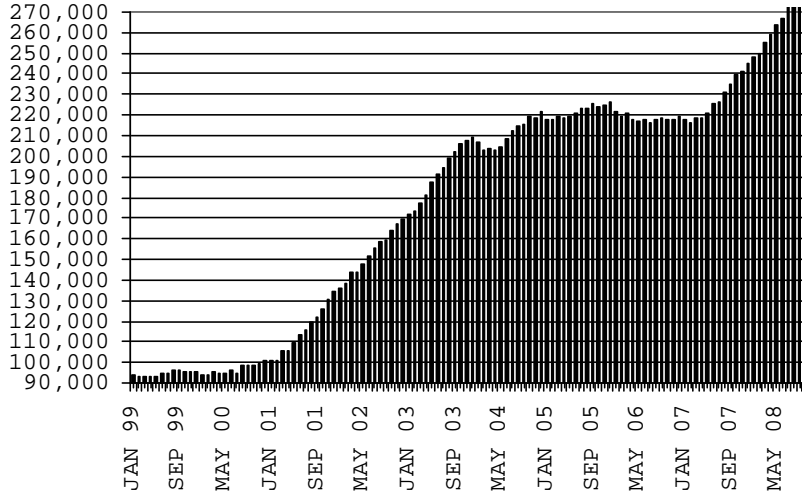
CHART 6

FOOD STAMPS PROGRAM

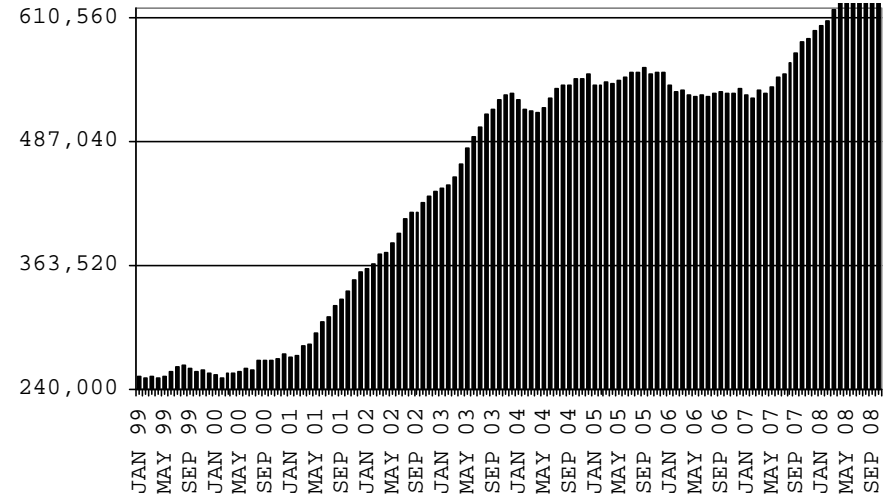
COMPARISON OF HOUSEHOLDS, RECIPIENTS, PAYMENTS & AVERAGE PAYMENTS

FOR 1999, 2000, 2001, 2002, 2003, 2004, 2005, 2006 & 2007

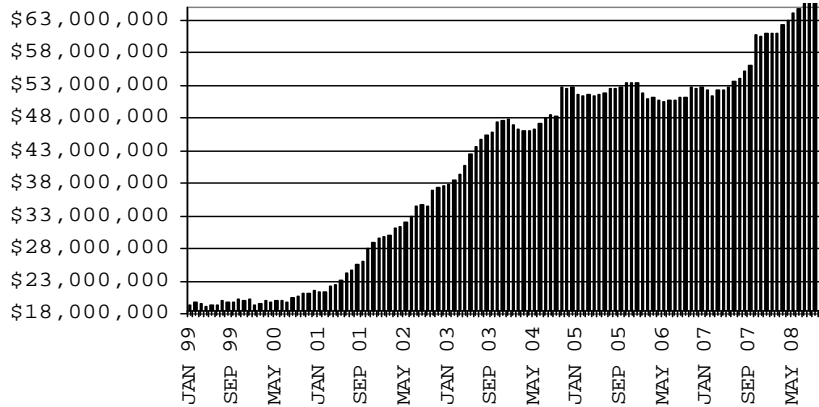
HOUSEHOLDS



RECIPIENTS



TOTAL PAYMENTS



AVERAGE PAYMENT PER HOUSEHOLD

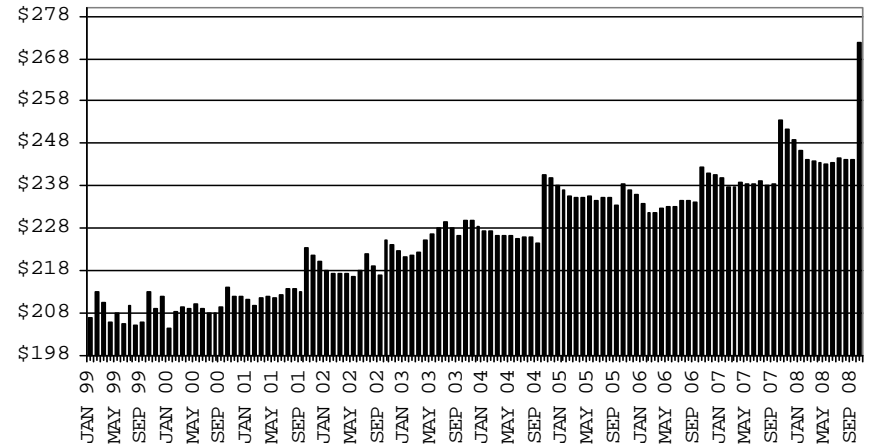


TABLE 7A
MEDICAL ASSISTANCE PROGRAM
RECIPIENTS

OCTOBER 2008

	SOBRA WOMAN 133% FPL	SOBRA CHILD	ADULT W/O CHILD 100% FPL	FOSTER CARE	1931 36% FPL	FEDERAL EMERGENCY SERVICES	INFANTS	ADULT W/O CHILD 40% FPL	MEDICAL W/SPEND DOWN	SOBRA WOMAN 100% FPL	SOBRA CHILD 100% FPL	TRANSITIONAL MEDICAL T1 - T4	1931 100% FPL	YATI	OTHER	TOTAL CASES
ARIZONA	11,980	65,063	42,109	10,702	288,132	84,114	49,818	105,404	5,866	3,668	176,037	42,622	85,280	265	25,115	996,175
DISTRICT I																
MARICOPA	6,336	36,544	18,342	5,413	155,252	64,869	29,720	48,755	3,069	1,911	99,191	20,652	40,172	144	12,414	542,784
DISTRICT II																
PIMA	1,871	10,036	8,269	2,993	44,322	10,474	6,975	19,346	845	579	26,829	7,416	14,783	77	4,517	159,332
DISTRICT III																
APACHE	216	1,476	845	42	10,646	87	972	4,185	78	81	3,748	1,075	2,308	3	398	26,160
COCONINO	375	1,467	1,184	125	7,249	535	1,129	3,150	129	95	3,956	1,279	2,296	4	364	23,337
NAVAJO	366	2,239	1,316	136	11,420	310	1,430	5,033	173	113	4,667	1,580	3,009	4	605	32,401
YAVAPAI	407	1,809	1,879	461	5,973	1,434	1,298	3,288	316	96	4,415	1,406	2,770	14	1,078	26,644
DISTRICT IV																
LA PAZ	46	232	221	12	1,196	166	192	611	26	19	674	168	356	0	155	4,074
MOHAVE	473	2,137	2,208	258	10,094	878	1,606	5,457	384	165	6,788	2,006	4,081	2	1,346	37,883
YUMA	592	2,547	2,626	273	10,840	2,142	1,928	3,570	276	219	8,943	2,251	5,688	2	1,393	43,290
DISTRICT V																
GILA	131	709	611	73	3,974	154	492	2,140	79	44	1,709	509	1,030	1	301	11,957
PINAL	649	3,621	2,005	547	15,356	1,757	2,245	5,664	277	179	7,775	2,060	4,116	9	1,214	47,474
DISTRICT VI																
COCHISE	256	1,126	1,429	257	6,310	657	909	2,471	120	84	3,600	1,138	2,343	4	752	21,456
GRAHAM	129	463	385	75	2,178	65	409	901	39	27	1,001	511	668	1	150	7,002
GREENLEE	18	33	42	8	239	9	51	102	6	6	101	50	54	0	22	741
SANTA CRUZ	115	624	747	29	3,083	577	462	731	49	50	2,640	521	1,606	0	406	11,640

TABLE 7B

MEDICAL ASSISTANCE PROGRAM

RECIPIENTS

CHANGE FROM

SEPTEMBER 2008

	SOBRA WOMAN 133% FPL	SOBRA CHILD	ADULT W/O CHILD 100% FPL	FOSTER CARE	1931 36% FPL	FEDERAL EMERGENCY SERVICES	INFANTS	ADULT W/O CHILD 40% FPL	MEDICAL W/SPEND DOWN	SOBRA WOMAN 100% FPL	SOBRA CHILD 100% FPL	TRANSITIONAL MEDICAL T1 - T4	1931 100% FPL	YATI	OTHER	TOTAL CASES
ARIZONA	(7)	1,039	765	63	4,275	442	(424)	1,234	336	(1)	3,174	295	1,614	4	397	13,206
DISTRICT I																
MARICOPA	16	694	424	65	3,218	287	(367)	765	139	31	1,635	(33)	848	3	263	7,988
DISTRICT II																
PIMA	(10)	216	126	(6)	705	79	(40)	197	33	(19)	452	124	140	2	82	2,081
DISTRICT III																
APACHE	(9)	(24)	11	1	(29)	0	(11)	(42)	(2)	(11)	72	17	49	0	(2)	20
COCONINO	6	50	8	3	(67)	(1)	(14)	(45)	14	4	41	39	4	0	(14)	28
NAVAJO	17	61	(3)	(1)	(126)	17	(13)	(3)	22	(16)	101	41	60	1	10	168
YAVAPAI	1	26	10	0	38	(3)	6	68	56	(2)	74	8	44	0	26	352
DISTRICT IV																
LA PAZ	2	4	3	0	(3)	(10)	9	2	(2)	(8)	14	17	10	0	7	45
MOHAVE	(14)	30	67	(5)	18	0	4	106	37	6	183	(1)	132	0	14	577
YUMA	(24)	42	12	7	25	(8)	(9)	8	44	3	97	151	91	0	16	455
DISTRICT V																
GILA	2	(28)	60	9	432	23	14	194	(12)	4	437	(91)	159	(2)	10	1,211
PINAL	(12)	(14)	1	0	(56)	(9)	10	28	(6)	4	96	9	44	(1)	(14)	80
	14	(14)	59	9	488	32	4	166	(6)	0	341	(100)	115	(1)	24	1,131
DISTRICT VI																
COCHISE	10	(15)	47	(8)	(99)	18	11	(20)	9	7	25	38	66	0	(9)	80
GRAHAM	(13)	(6)	(3)	(2)	50	7	(2)	(9)	4	1	9	9	(16)	0	(9)	20
GREENLEE	2	0	3	0	(21)	4	(10)	(3)	(2)	0	(1)	(4)	0	0	(4)	(36)
SANTA CRUZ	7	(11)	0	0	134	29	(2)	16	(4)	(1)	35	(20)	27	0	7	217

TABLE 7C

MEDICAL ASSISTANCE PROGRAM

RECIPIENTS

CHANGE FROM

OCTOBER 2007

	SOBRA WOMAN 133% FPL	SOBRA CHILD	ADULT W/O CHILD 100% FPL	FOSTER CARE	1931 36% FPL	FEDERAL EMERGENCY SERVICES	INFANTS	ADULT W/O CHILD 40% FPL	MEDICAL W/SPEND DOWN	SOBRA WOMAN 100% FPL	SOBRA CHILD 100% FPL	TRANSITIONAL MEDICAL T1 - T4	3E 1931 100% FPL	YATI	OTHER	TOTAL CASES
ARIZONA	161	3,181	4,390	1,226	28,380	(2,198)	(1,386)	17,189	397	199	16,446	(494)	8,870	13	3,027	79,401
DISTRICT I																
MARICOPA	245	2,338	2,405	672	20,857	(1,497)	(1,160)	10,389	47	169	11,146	(795)	4,974	25	1,590	51,405
DISTRICT II																
PIMA	40	591	899	330	3,335	(296)	(208)	3,092	66	27	1,707	338	1,045	(3)	550	11,513
DISTRICT III	(127)	279	218	85	1,548	(138)	(143)	1,189	125	(62)	1,065	33	877	(4)	331	5,276
APACHE	(51)	123	0	3	210	(7)	(17)	(28)	15	(21)	(85)	(81)	(31)	3	49	82
COCONINO	(8)	45	9	(4)	363	28	(51)	310	42	(13)	380	(7)	199	(7)	23	1,309
NAVAJO	(6)	104	3	25	473	(15)	50	390	33	(27)	278	48	282	1	82	1,721
YAVAPAI	(62)	7	206	61	502	(144)	(125)	517	35	(1)	492	73	427	(1)	177	2,164
DISTRICT IV	(37)	(40)	476	44	412	(267)	(26)	1,271	138	21	1,246	185	1,091	1	401	4,916
LA PAZ	10	3	22	(6)	(29)	(31)	13	65	0	1	77	(27)	30	0	17	145
MOHAVE	(17)	48	257	31	923	(102)	(6)	994	65	(3)	471	138	541	0	161	3,501
YUMA	(30)	(91)	197	19	(482)	(134)	(33)	212	73	23	698	74	520	1	223	1,270
DISTRICT V	30	(67)	249	77	1,408	33	40	976	30	25	1,184	(52)	663	(1)	69	4,664
GILA	9	(53)	99	(1)	(94)	5	13	233	(12)	12	266	30	97	(1)	15	618
PINAL	21	(14)	150	78	1,502	28	27	743	42	13	918	(82)	566	0	54	4,046
DISTRICT VI	10	80	143	18	820	(33)	111	272	(9)	19	98	(203)	220	(5)	86	1,627
COCHISE	1	22	102	5	322	(22)	53	195	(12)	15	100	(57)	127	(4)	22	869
GRAHAM	6	34	19	18	132	(6)	49	52	12	(2)	(97)	(21)	11	(1)	24	230
GREENLEE	(11)	1	(4)	(4)	(63)	2	(8)	(2)	1	5	(21)	(20)	(15)	0	(1)	(140)
SANTA CRUZ	14	23	26	(1)	429	(7)	17	27	(10)	1	116	(105)	97	0	41	668

CHART 7
MEDICAL ASSISTANCE PROGRAM
COMPARISON OF RECIPIENTS
FOR 1999, 2000, 2001, 2002, 2003, 2004, 2005, 2006 & 2007

TOTAL RECIPIENTS

