



---

DEPARTMENT OF ECONOMIC SECURITY

---

*Your Partner For A Stronger Arizona*

State of Arizona

Department of Economic Security

Family Assistance Administration

Statistical Bulletin

November, 2008

Phone: (602) 542-3678

<http://www.azdes.gov/faa/Statistics.asp>

\*\*\*\* STATISTICAL BULLETIN \*\*\*\*  
ARIZONA DEPARTMENT OF ECONOMIC SECURITY  
FAMILY ASSISTANCE ADMINISTRATION  
BOX 6123, PHOENIX, ARIZONA 85005  
PHONE (602) 542-3678

NOVEMBER 2008

THIS ISSUE OF THE STATISTICAL BULLETIN COMPARES NOVEMBER 2008 DATA FOR EACH OF THE INDICATED PROGRAMS WITH THE INFORMATION FOR OCTOBER 2008 AND NOVEMBER 2007. STATEWIDE SUMMARIES OF ACTIVITY WITHIN EACH OF THE SPECIFIC PROGRAMS FOR THIS REPORT PERIOD ARE DISCUSSED BELOW. THE TABLES COMPARE CURRENT AND PRIOR MONTH DATA. DISTRICT AND COUNTY COMPARISONS ARE PROVIDED WITHIN THIS BULLETIN

CASH ASSISTANCE (CA)

COMPARING TO OCTOBER 2008, NOVEMBER 2008 CASES INCREASED BY 184 (0.51%) TO 36,506. RECIPIENTS INCREASED BY 555 (0.72%) TO 77,798. PAYMENTS INCREASED BY \$68,691 (0.72%) TO \$9,671,600. AVERAGE PAYMENT PER CASE INCREASED BY \$0.55 (0.21%) TO \$264.93. PAYMENT PER RECIPIENT INCREASED BY \$0.00 (0.00%) TO \$124.32.

COMPARING TO NOVEMBER 2007, NOVEMBER 2008 CASES DECREASED BY 107 (0.29%). RECIPIENTS DECREASED BY 832 (1.06%). TOTAL PAYMENTS DECREASED BY \$115,240 (1.18%). THE AVERAGE PAYMENT PER CASE DECREASED BY \$2.38 (0.89%). THE AVERAGE PAYMENT PER RECIPIENT DECREASED BY \$0.15 (0.12%).

CASH ASSISTANCE UNEMPLOYED PARENT PROGRAM (CA-UP)

COMPARING TO OCTOBER 2008, NOVEMBER 2008 CASES INCREASED BY 111 (9.69%) TO 1,256. RECIPIENTS INCREASED BY 428 (10.07%) TO 4,679. PAYMENTS INCREASED BY \$43,406 (10.54%) TO \$455,068. AVERAGE PAYMENT PER CASE INCREASED BY \$2.79 (0.78%) TO \$362.32. PAYMENT PER RECIPIENT INCREASED BY \$0.42 (0.43%) TO \$97.26.

COMPARING TO NOVEMBER 2007, NOVEMBER 2008 CASES INCREASED BY 560 (80.46%). RECIPIENTS INCREASED BY 1,982 (73.49%). TOTAL PAYMENTS INCREASED BY \$199,264 (77.90%). THE AVERAGE PAYMENT PER CASE DECREASED BY \$5.22 (1.42%). THE AVERAGE PAYMENT PER RECIPIENT INCREASED BY \$2.41 (2.54%).

CASH ASSISTANCE WITH GRANT UNDER \$100 (CA-MOE)

COMPARING TO OCTOBER 2008, NOVEMBER 2008 CASES DECREASED BY 40 (5.67%) TO 666. RECIPIENTS DECREASED BY 82 (5.62%) TO 1,377. PAYMENTS DECREASED BY \$5,589 (10.65%) TO \$46,882. AVERAGE PAYMENT PER CASE DECREASED BY \$3.93 (5.29%) TO \$70.39. AVERAGE PAYMENT PER RECIPIENT DECREASED BY \$1.91 (5.31%) TO \$34.05.

COMPARING TO NOVEMBER 2007, NOVEMBER 2008 CASES INCREASED BY 9 (1.37%). RECIPIENTS DECREASED BY 6 (0.43%). TOTAL PAYMENTS DECREASED BY \$1,582 (3.26%). THE AVERAGE PAYMENT PER CASE DECREASED BY \$3.38 (4.58%). THE AVERAGE PAYMENT PER RECIPIENT DECREASED BY \$0.99 (2.83%).

CASH ASSISTANCE UNEMPLOYED PARENT PROGRAM WITH GRANT UNDER \$100 (CA-UP-MOE) NEW PROGRAM STARTING 7/01

COMPARING TO OCTOBER 2008, NOVEMBER 2008 CASES DECREASED BY 1 (4.55%) TO 21. RECIPIENTS DECREASED BY 2 (2.90%) TO 67. PAYMENTS INCREASED BY \$64 (4.91%) TO \$1,368. AVERAGE PAYMENT PER CASE INCREASED BY \$5.87 (9.90%) TO \$65.14. PAYMENT PER RECIPIENT INCREASED BY \$1.52 (8.04%) TO \$20.42.

COMPARING TO NOVEMBER 2007, NOVEMBER 2008 CASES INCREASED BY 11 (110.00%). RECIPIENTS INCREASED BY 26 (1.99%). TOTAL PAYMENTS INCREASED BY \$789 (136.27%). THE AVERAGE PAYMENT PER CASE INCREASED BY \$7.24 (12.50%). THE AVERAGE PAYMENT PER RECIPIENT INCREASED BY \$6.30 (44.62%).

GENERAL ASSISTANCE (GA)

COMPARING TO OCTOBER 2008, NOVEMBER 2008 CASES INCREASED BY 53 (3.45%) TO 1,589. RECIPIENTS INCREASED BY 54 (3.50%) TO 1,597. PAYMENTS INCREASED BY \$6,181 (2.68%) TO \$236,498. AVERAGE PAYMENT PER CASE DECREASED BY \$1.12 (0.75%) TO \$148.83. AVERAGE PAYMENT PER RECIPIENT DECREASED BY \$1.18 (0.79%) TO \$148.09.

COMPARING TO NOVEMBER 2007, NOVEMBER 2008 CASES INCREASED BY 243 (18.05%). RECIPIENTS INCREASED BY 247 (18.30%). TOTAL PAYMENTS INCREASED BY \$30,838 (14.99%). THE AVERAGE PAYMENT PER CASE DECREASED BY \$3.96 (2.59%). THE AVERAGE PAYMENT PER RECIPIENT DECREASED BY \$4.25 (2.79%).

TUBERCULOSIS CONTROL PROGRAM (TC)

COMPARING TO OCTOBER 2008, NOVEMBER 2008 CASES INCREASED BY 1 (16.67%) TO 7. RECIPIENTS INCREASED BY 1 (16.67%) TO 7. PAYMENTS INCREASED BY \$110 (17.11%) TO \$753. AVERAGE PAYMENT PER CASE INCREASED BY \$0.40 (0.38%) TO \$107.57. AVERAGE PAYMENT PER RECIPIENT INCREASED BY \$0.40 (0.38%) TO \$107.57.

COMPARING TO NOVEMBER 2007, NOVEMBER 2008 CASES DECREASED BY 5 (41.67%). RECIPIENTS DECREASED BY 5 (41.67%). TOTAL PAYMENTS DECREASED BY \$629 (45.51%). THE AVERAGE PAYMENT PER CASE DECREASED BY \$7.60 (6.60%). THE AVERAGE PAYMENT PER RECIPIENT DECREASED BY \$7.60 (6.60%).

SUPPLEMENTAL NUTRITION ASSISTANCE PROGRAM (SNAP)

COMPARING TO OCTOBER 2008, NOVEMBER 2008 SUPPLEMENTAL NUTRITION ASSISTANCE HOUSEHOLDS INCREASED BY 5,448 (1.87%) TO 297,513. PERSONS RECEIVING SUPPLEMENTAL NUTRITION ASSISTANCE INCREASED BY 14,741 (2.09%) TO 721,318. TOTAL COUPON ISSUANCE INCREASED BY \$1,435,471 (1.81%) TO \$80,841,365. THE AVERAGE HOUSEHOLD ALLOTMENT DECREASED BY \$0.16 (0.06%) TO \$271.72. THE AVERAGE ALLOTMENT PER PERSON DECREASED BY \$0.31 (0.28%) TO \$112.07.

COMPARING TO NOVEMBER 2007, NOVEMBER 2008 SUPPLEMENTAL NUTRITION ASSISTANCE HOUSEHOLDS INCREASED BY 56,245 (23.31%). PERSONS RECEIVING SUPPLEMENTAL NUTRITION ASSISTANCE INCREASED BY 132,059 (22.41%). TOTAL COUPON ISSUANCE INCREASED BY \$20,205,916 (33.32%). THE AVERAGE ALLOTMENT PER HOUSEHOLD INCREASED BY \$20.40 (8.12%). THE AVERAGE ALLOTMENT PER PERSON INCREASED BY \$9.17 (8.91%).

MEDICAL ASSISTANCE PROGRAM (MA) NEW TABLE INCLUDES PROP. 204 CATEGORIES

COMPARING TO OCTOBER 2008, NOVEMBER 2008 TOTAL RECIPIENTS TOTAL RECIPIENTS INCREASED BY 3,358 (0.34%). SOBRA WOMEN AT 140% FPL DECREASED BY 303 (2.53%). SOBRA CHILDREN DECREASED BY 262 (0.40%). ADULTS W/O CHILD AT 100% DECREASED BY 347 (0.82%). FOSTER CARE INCREASED BY 237 (2.21%). 1931 AT 36% FPL INCREASED BY 3,209 (1.11%). EMERGENCY SERVICES DECREASED BY 373 (0.44%). INFANTS DECREASED BY 780 (1.57%). ADULT W/O CHILD AT 140% INCREASED BY 113 (0.11%). MEDICAL W/SPEND DOWN DECREASED BY 37 (0.63%). SOBRA WOMAN AT 100% DECREASED BY 65 (1.77%). SOBRA CHILD AT 100% INCREASED BY 579 (0.33%). TRANSITIONAL MEDICAL INCREASED BY 980 (2.30%). 1931 AT 100% INCREASED BY 267 (0.31%). YATI INCREASED BY 1 (0.38%). ALL OTHER CATEGORIES INCREASED BY 139 (0.55%).

COMPARING TO NOVEMBER 2007, NOVEMBER 2008 TOTAL RECIPIENTS TOTAL RECIPIENTS INCREASED BY 84,653 (9.25%). SOBRA WOMEN AT 140% FPL INCREASED BY 181 (1.57%). SOBRA CHILDREN INCREASED BY 2,841 (4.59%). ADULTS W/O CHILD AT 100% INCREASED BY 4,045 (10.72%). FOSTER CARE INCREASED BY 1,225 (12.61%). 1931 AT 36% FPL INCREASED BY 32,172 (12.41%). EMERGENCY SERVICES DECREASED BY 1,448 (1.70%). INFANTS DECREASED BY 1,620 (3.20%). ADULT W/O CHILD AT 140% INCREASED BY 16,418 (18.43%). MEDICAL W/SPEND DOWN INCREASED BY 530 (10.00%). SOBRA WOMAN AT 100% INCREASED BY 282 (8.49%). SOBRA CHILD AT 100% INCREASED BY 17,128 (10.74%). TRANSITIONAL MEDICAL INCREASED BY 827 (1.93%). 1931 AT 100% INCREASED BY 9,021 (11.79%). YATI INCREASED BY 25 (10.37%). ALL OTHER CATEGORIES INCREASED BY 3,026 (13.61%).

## TANF SUMMARY

### TABLES 1, 1A, 1B, & 1C: ARIZONA 1

	NOVEMBER 2008							OCTOBER 2008			NOVEMBER 2007		
	FAMILIES (CASES)	PERSONS (RECIP.)	ADULTS	CHILDREN	TOTAL PAYMENTS	AVERAGE	AVERAGE	FAMILIES (CASES)	PERSONS (RECIP.)	TOTAL PAYMENTS	FAMILIES (CASES)	PERSONS (RECIP.)	TOTAL PAYMENTS
						PAYMENT/ CASE	PAYMENT/ RECIP.						
ARIZONA	38,449	83,921	20,842	63,079	10,174,918	264.63	121.24	254	899	106,572	473	1,170	83,231
DISTRICT I													
MARICOPA	22,125	49,021	11,473	37,548	5,909,520	267.10	120.55	304	886	104,166	1,322	3,207	347,849
DISTRICT II													
PIMA	6,902	14,371	3,747	10,624	1,798,018	260.51	125.11	(25)	(13)	2,354	(364)	(939)	(109,440)
DISTRICT III													
APACHE	76	166	49	117	19,911	261.99	119.95	(13)	(23)	(2,258)	(63)	(135)	(15,316)
COCONINO	243	505	123	382	58,359	240.16	115.56	(11)	(50)	(4,725)	(30)	(88)	(8,229)
NAVAJO	1,331	3,263	948	2,315	370,271	278.19	113.48	24	80	6,484	(51)	(103)	(13,933)
YAVAPAI	707	1,397	301	1,096	177,995	251.76	127.41	8	36	7,041	40	117	11,340
DISTRICT IV													
LA PAZ	215	463	142	321	54,745	254.63	118.24	(2)	(7)	1,018	(28)	(67)	(7,676)
MOHAVE	1,377	2,954	888	2,066	357,210	259.41	120.92	6	32	3,876	(50)	(67)	(16,709)
YUMA	1,143	2,553	581	1,972	302,021	264.24	118.30	(15)	(48)	(3,876)	(162)	(373)	(47,104)
DISTRICT V													
GILA	740	1,543	557	986	190,625	257.60	123.54	2	25	(1,682)	(28)	(126)	(15,842)
PINAL	1,941	4,304	1,141	3,163	509,926	262.71	118.48	16	53	5,752	(85)	(290)	(34,782)
DISTRICT VI													
COCHISE	996	1,997	519	1,478	256,544	257.57	128.46	(28)	(59)	(8,975)	11	48	2,757
GRAHAM	315	628	192	436	78,402	248.90	124.84	(11)	(15)	(3,167)	(59)	(90)	(15,348)
GREENLEE	28	52	12	40	6,854	244.79	131.81	(1)	(2)	136	(24)	(63)	(7,212)
SANTA CRUZ	310	704	169	535	84,517	272.64	120.05	0	4	428	44	139	12,876

1/EXCLUDES: PRIOR MONTH NET TOTALS OF 2,219 CASES; 5,507 RECIPIENTS; \$454,172.  
 1/GRANT DIVERSION TOTALS OF: 249 CASES; \$267,699.  
 ZERO PAY TOTALS OF 675 CASES; 2,104 RECIPIENTS.

	CURRENT MO. CASES	CURRENT MO. RECIP.	CURRENT MO. DOLLARS	PRIOR MO. CASES	PRIOR MO. RECIP.	PRIOR MO. DOLLARS
PASQUA/YAQUI	299	857	\$91,394	16	54	4,178
WM APACHE	715	1,911	\$215,021	25	59	4,447
SALT RIVER	90	320	\$29,562	5	19	840
SAN CARLOS	698	1,483	\$182,394	12	27	1,578
HOPAI	125	343	\$29,054	9	35	1,515
<b>TOTAL</b>	<b>1,927</b>	<b>4,914</b>	<b>\$547,425</b>	<b>67</b>	<b>194</b>	<b>\$12,558</b>

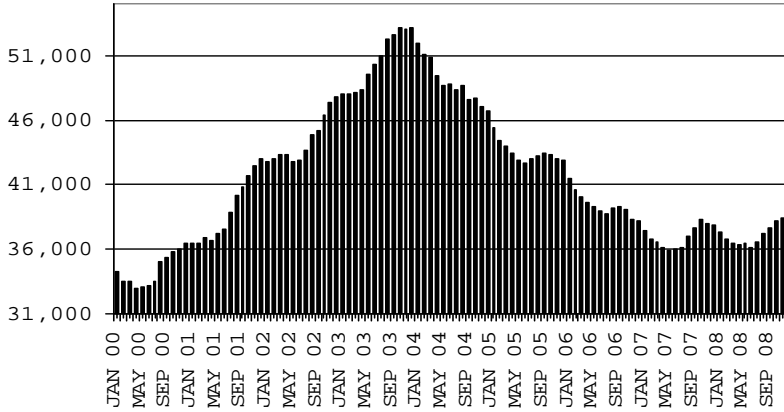
# TANF SUMMARY

## TABLES 1, 1A, 1B, & 1C

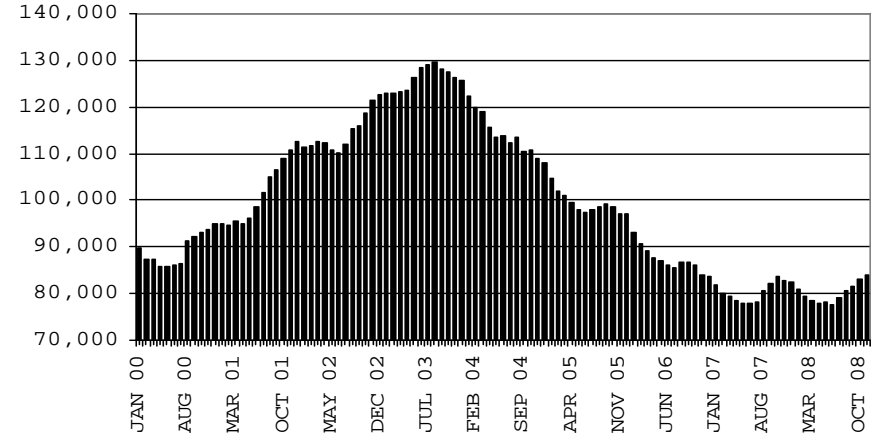
### COMPARISON OF CASES, RECIPIENTS, PAYMENTS & AVERAGE PAYMENTS

FOR 2000, 2001, 2002, 2003, 2004, 2005, 2006, 2007, & 2008

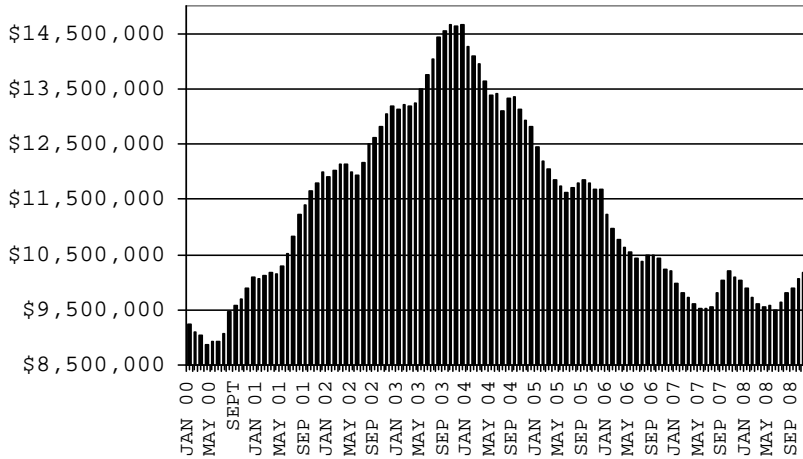
#### CASES



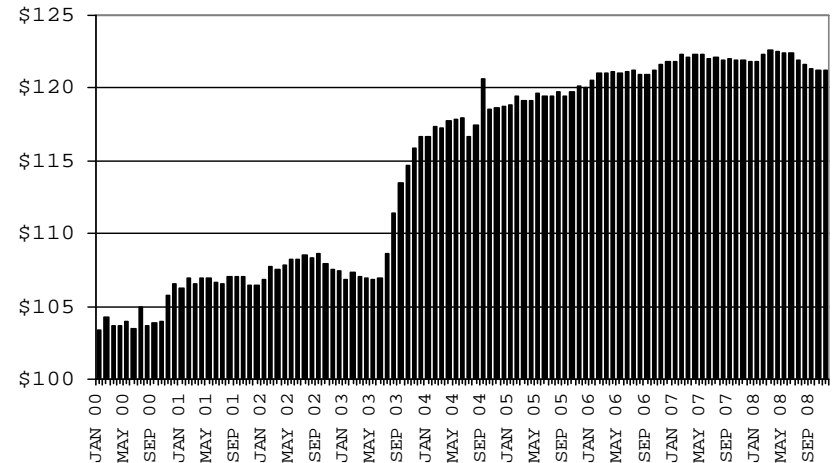
#### RECIPIENTS



#### PAYMENTS



#### AVERAGE PAYMENTS PER RECIPIENT



**TABLE 1**  
**CASH ASSISTANCE: ARIZONA 1.**

	NOVEMBER 2008							CHANGE FROM						
								OCTOBER 2008			NOVEMBER 2007			
	FAMILIES (CASES)	(RECIP.)	ADULTS	CHILDREN	TOTAL PAYMENTS	AVERAGE PAYMENT/ CASE	AVERAGE PAYMENT/ RECIP.	FAMILIES (CASES)	PERSONS (RECIP.)	TOTAL PAYMENTS	FAMILIES (CASES)	PERSONS (RECIP.)	TOTAL PAYMENTS	
ARIZONA	36,506	77,798	18,583	59,215	9,671,600	264.93	124.32	184	555	68,691	(107)	(832)	(115,240)	
DISTRICT I														
MARICOPA	20,994	45,540	10,311	35,229	5,619,939	267.69	123.41	253	677	80,250	829	1,556	183,500	
DISTRICT II														
PIMA	6,580	13,347	3,329	10,018	1,714,214	260.52	128.43	(37)	(89)	(5,430)	(431)	(1,204)	(136,770)	
DISTRICT III	2,220	4,827	1,218	3,609	584,177	263.14	121.02	1	(12)	1,396	(133)	(350)	(38,812)	
APACHE	68	134	35	99	17,252	253.71	128.75	(12)	(28)	(3,240)	(61)	(143)	(16,194)	
COCONINO	230	464	109	355	55,520	241.39	119.66	(11)	(48)	(5,107)	(33)	(99)	(9,524)	
NAVAJO	1,244	2,907	797	2,110	339,109	272.60	116.65	20	56	5,630	(71)	(205)	(22,238)	
YAVAPAI	678	1,322	277	1,045	172,296	254.12	130.33	4	8	4,113	32	97	9,144	
DISTRICT IV	2,551	5,382	1,360	4,022	667,215	261.55	123.97	(16)	(31)	(825)	(261)	(570)	(76,291)	
LA PAZ	200	413	121	292	50,663	253.32	122.67	3	4	571	(26)	(59)	(7,669)	
MOHAVE	1,274	2,622	735	1,887	330,110	259.11	125.90	(1)	12	1,391	(73)	(155)	(24,646)	
YUMA	1,077	2,347	504	1,843	286,442	265.96	122.05	(18)	(47)	(2,787)	(162)	(356)	(43,976)	
DISTRICT V	2,564	5,460	1,534	3,926	671,383	261.85	122.96	19	77	5,665	(83)	(294)	(37,708)	
GILA	731	1,513	546	967	188,635	258.05	124.68	0	20	(1,417)	16	21	(1,231)	
PINAL	1,833	3,947	988	2,959	482,748	263.36	122.31	19	57	7,082	(99)	(315)	(36,477)	
DISTRICT VI	1,597	3,242	831	2,411	414,672	259.66	127.91	(36)	(67)	(12,365)	(28)	30	(9,159)	
COCHISE	963	1,914	484	1,430	249,450	259.03	130.33	(32)	(77)	(10,770)	6	41	1,063	
GRAHAM	307	607	180	427	76,918	250.55	126.72	(8)	(9)	(2,699)	(49)	(72)	(13,839)	
GREENLEE	27	50	11	39	6,768	250.67	135.36	(1)	0	153	(23)	(58)	(6,788)	
SANTA CRUZ	300	671	156	515	81,536	271.79	121.51	5	19	951	38	119	10,405	
1/EXCLUDES: PRIOR MONTH NET TOTALS OF: 1,194 CASES; 3,030 RECIPIENTS; \$354,026. GRANT DIVERSION TOTALS OF: 249 CASES; \$267,699. ZERO PAY TOTALS OF 644 CASES; 1,964 RECIPIENTS.														
								CURRENT MO. CASES	CURRENT MO. RECIP.	CURRENT MO. DOLLARS	PRIOR MO. CASES	PRIOR MO. RECIP.	PRIOR MO. DOLLARS	
								PASQUA/YAQUI	287	806	87,537	14	48	3,480
								WM APACHE	663	1,678	194,235	22	45	3,515
								SALT RIVER	90	320	29,562	5	19	840
								SAN CARLOS	698	1,483	182,394	12	27	1,578
								HOPÍ	125	343	29,054	9	35	1,515
CASES WITH GRANT UNDER \$100 (SEE TABLE 1B).								<b>TOTAL</b>	<b>1,863</b>	<b>4,630</b>	<b>522,782</b>	<b>62</b>	<b>174</b>	<b>10,928</b>

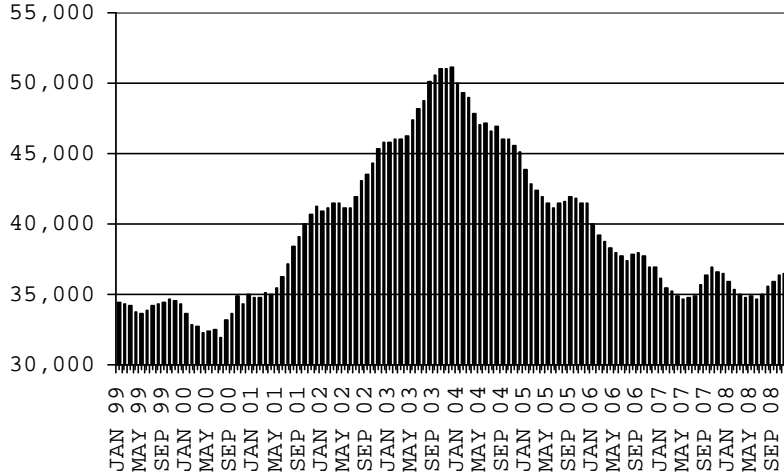
# CHART 1

## CASH ASSISTANCE PROGRAM

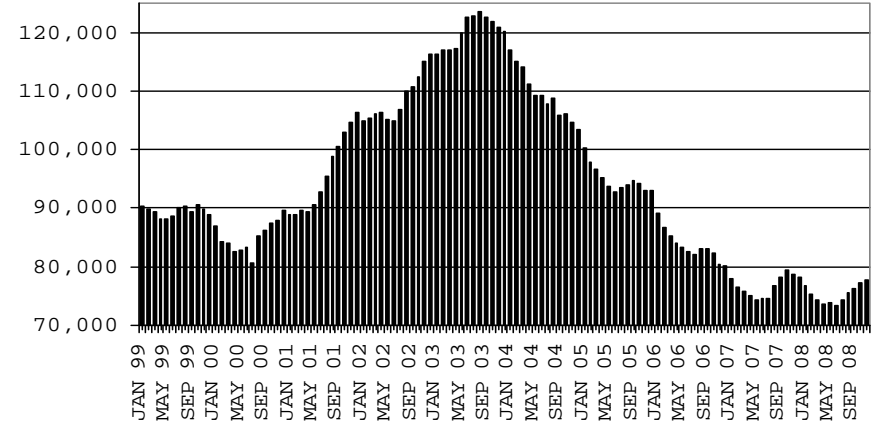
### COMPARISON OF CASES, RECIPIENTS, PAYMENTS & AVERAGE PAYMENTS

FOR 1999, 2000, 2001, 2002, 2003, 2004, 2005, 2006, 2007, & 2008

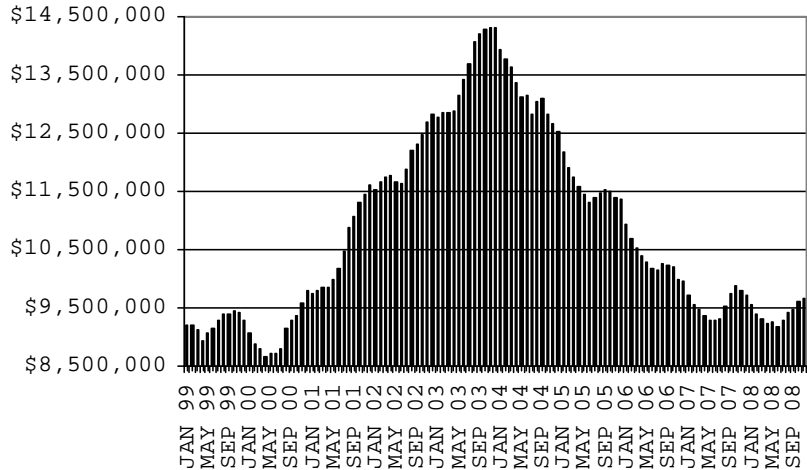
#### CASES



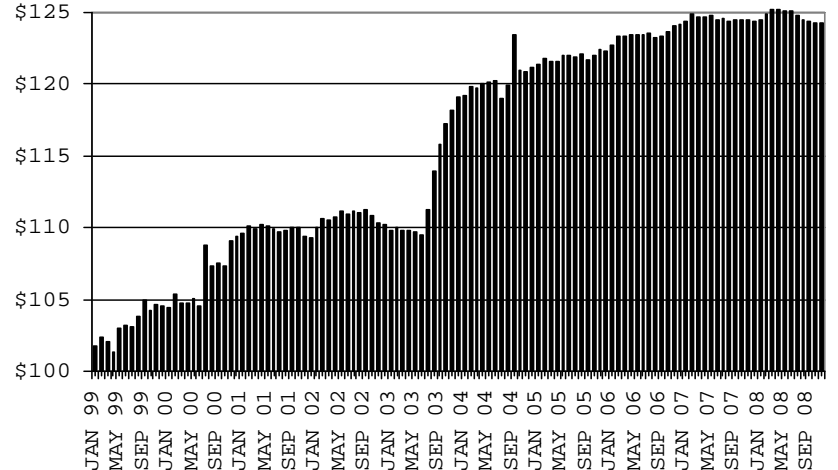
#### RECIPIENTS



#### PAYMENTS



#### AVERAGE PAYMENTS PER RECIPIENT



**TABLE 1A  
CA-UP**

**CASH ASSISTANCE UNEMPLOYED PARENT PROGRAM: ARIZONA 1**

	NOVEMBER 2008							CHANGE FROM			NOVEMBER 2007		
	FAMILIES (CASES)	PERSONS (RECIP.)	ADULTS	CHILDREN	TOTAL PAYMENTS	AVERAGE PAYMENT/ CASE	AVERAGE PAYMENT/ RECIP.	FAMILIES (CASES)	PERSONS (RECIP.)	TOTAL PAYMENTS	FAMILIES (CASES)	PERSONS (RECIP.)	TOTAL PAYMENTS
ARIZONA	1,256	4,679	1,883	2,796	455,068	362.32	97.26	111	428	43,406	560	1,982	199,264
DISTRICT I													
MARICOPA	732	2,644	961	1,683	263,527	360.01	99.67	70	255	27,353	466	1,610	163,693
DISTRICT II													
PIMA	208	790	349	441	75,270	361.88	95.28	25	92	9,687	75	282	27,720
DISTRICT III													
APACHE	6	28	12	16	2,434	405.67	86.93	3	17	1,251	3	17	1,380
COCONINO	6	22	10	12	2,309	384.83	104.95	1	3	445	3	6	1,185
NAVAJO	76	333	144	189	30,420	400.26	91.35	2	17	731	16	92	8,144
YAVAPAI	15	53	19	34	4,919	327.93	92.81	9	38	3,416	8	25	2,341
DISTRICT IV													
LA PAZ	7	34	14	20	3,338	476.86	98.18	(1)	3	537	(3)	(8)	(301)
MOHAVE	67	254	129	125	24,165	360.67	95.14	8	21	2,252	21	81	7,835
YUMA	34	130	54	76	13,043	383.62	100.33	(5)	(17)	(1,717)	(12)	(44)	(3,656)
DISTRICT V													
GILA	4	20	8	12	1,632	408.00	81.60	(1)	(3)	(377)	(37)	(131)	(13,883)
PINAL	72	270	133	137	24,280	337.22	89.93	(2)	(7)	(1,279)	13	29	2,033
DISTRICT VI													
COCHISE	17	56	28	28	5,682	334.24	101.46	4	17	1,815	5	11	1,804
GRAHAM	5	17	10	7	1,335	267.00	78.53	1	3	(195)	(3)	(8)	(1,118)
GREENLEE	0	0	0	0	0	0.00	0.00	(1)	(4)	(103)	(1)	(4)	(418)
SANTA CRUZ	7	28	12	16	2,714	387.71	96.93	(2)	(7)	(410)	6	24	2,505

1/EXCLUDES: PRIOR MONTH NET TOTALS OF: 122 CASES; 474 RECIPIENTS; \$44,824.  
GRANT DIVERSION TOTALS OF: 0 CASES; \$0.  
ZERO PAY TOTALS OF 31 CASES; 140 RECIPIENTS.

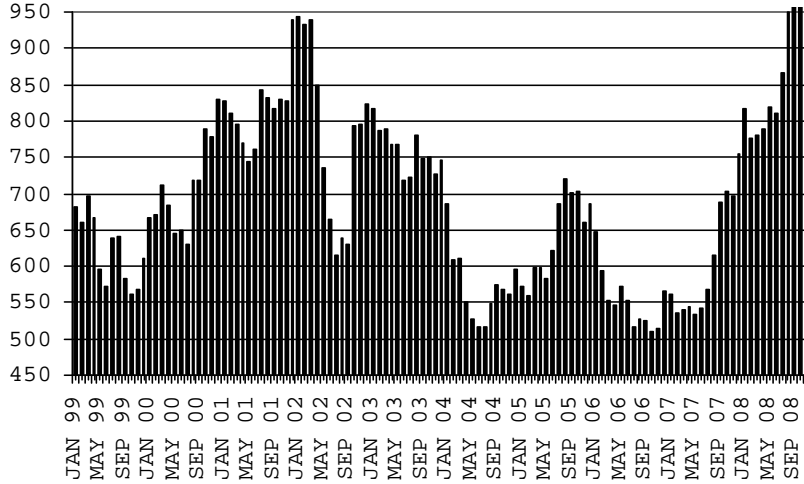
	CURRENT MO. CASES	CURRENT MO. RECIP.	CURRENT MO. DOLLARS	PRIOR MO. CASES	PRIOR MO. RECIP.	PRIOR MO. DOLLARS
PASQUAYAUQUI	12	51	3,857	2	6	698
WM APACHE	52	233	20,786	3	14	932
SALT RIVER	0	0	0	0	0	0
SAN CARLOS	0	0	0	0	0	0
HOPÍ	0	0	0	0	0	0
<b>TOTAL</b>	<b>64</b>	<b>284</b>	<b>24,643</b>	<b>5</b>	<b>20</b>	<b>1,630</b>

CASES WITH GRANT UNDER \$100 (SEE TABLE 1C).

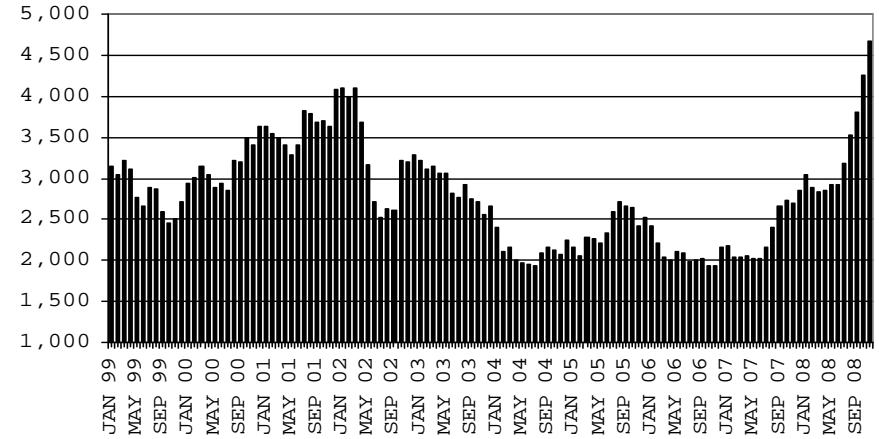
# CHART 1A

## CASH ASSISTANCE UNEMPLOYED PARENT PROGRAM COMPARISON OF CASES, RECIPIENTS, PAYMENTS & AVERAGE PAYMENTS FOR 1999, 2000, 2001, 2002, 2003, 2004, 2005, 2006, 2007, & 2008

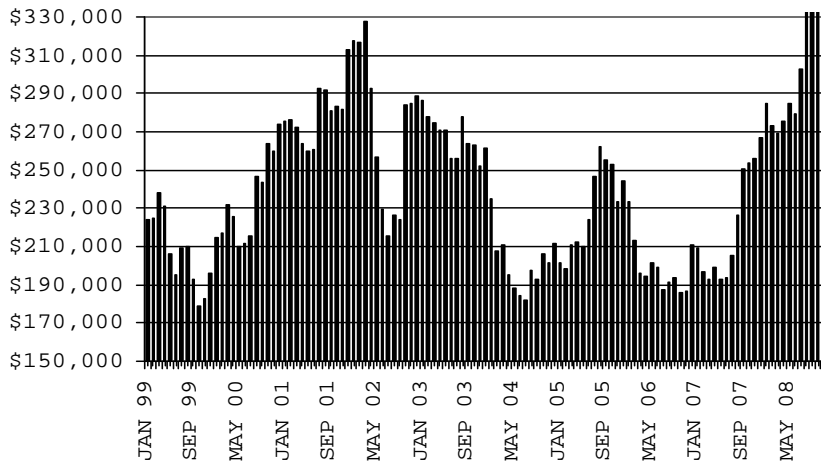
### CASES



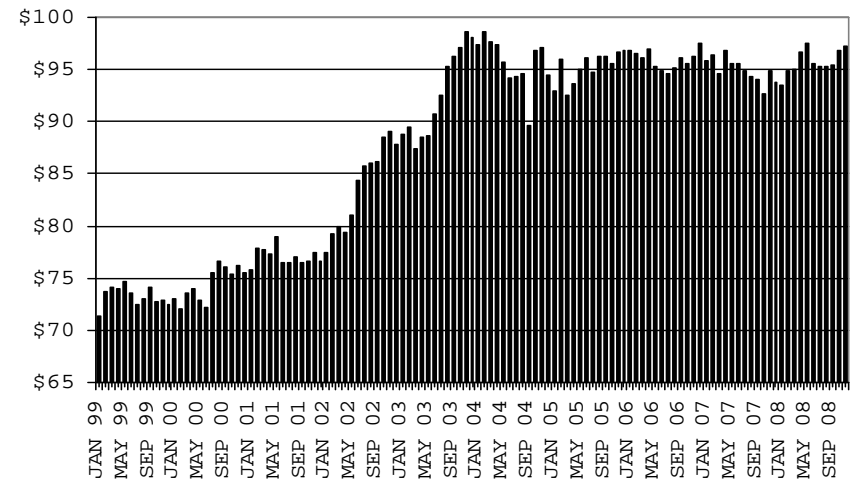
### RECIPIENTS



### PAYMENTS



### AVERAGE PAYMENTS PER RECIPIENT





**TABLE 1B 1/**

**CASH ASSISTANCE: ARIZONA  
CASES WITH GRANT UNDER \$100**

	CHANGE FROM												
	NOVEMBER 2008							OCTOBER 2008			NOVEMBER 2007		
	FAMILIES (CASES)	PERSONS (RECIP.)	ADULTS	CHILDREN	TOTAL PAYMENTS	AVERAGE PAYMENT/ CASE	AVERAGE PAYMENT/ RECIP.	FAMILIES (CASES)	PERSONS (RECIP.)	TOTAL PAYMENTS	FAMILIES (CASES)	PERSONS (RECIP.)	TOTAL PAYMENTS
ARIZONA	666	1,377	354	1,023	46,882	70.39	34.05	(40)	(82)	(5,589)	9	(6)	(1,582)
DISTRICT I													
MARICOPA	385	793	188	605	25,153	65.33	31.72	(21)	(58)	(3,689)	17	13	2
DISTRICT II													
PIMA	111	223	64	159	8,371	75.41	37.54	(13)	(16)	(1,880)	(8)	(18)	(423)
DISTRICT III													
APACHE	2	4	2	2	225	112.50	56.25	(4)	(12)	(269)	(5)	(9)	(502)
COCONINO	7	19	4	15	530	75.71	27.89	0	0	(7)	0	5	110
NAVAJO	11	23	7	16	742	67.45	32.26	2	7	123	4	10	161
YAVAPAI	13	21	5	16	683	52.54	32.52	(5)	(10)	(488)	(1)	(6)	(242)
DISTRICT IV													
LA PAZ	8	16	7	9	744	93.00	46.50	(3)	(9)	(66)	2	5	336
MOHAVE	34	69	20	49	2,789	82.03	40.42	(2)	(5)	164	1	3	37
YUMA	31	74	23	51	2,475	79.84	33.45	9	21	725	11	25	467
DISTRICT V													
GILA	5	10	3	7	358	71.60	35.80	3	8	112	(7)	(16)	(728)
PINAL	36	87	20	67	2,898	80.50	33.31	0	6	6	2	1	(259)
DISTRICT VI													
COCHISE	16	27	7	20	1,412	88.25	52.30	0	1	(20)	0	(4)	(110)
GRAHAM	3	4	2	2	149	49.67	37.25	(4)	(9)	(273)	(7)	(10)	(391)
GREENLEE	1	2	1	1	86	86.00	43.00	1	2	86	0	(1)	(6)
SANTA CRUZ	3	5	1	4	267	89.00	53.40	(3)	(8)	(113)	0	(4)	(34)

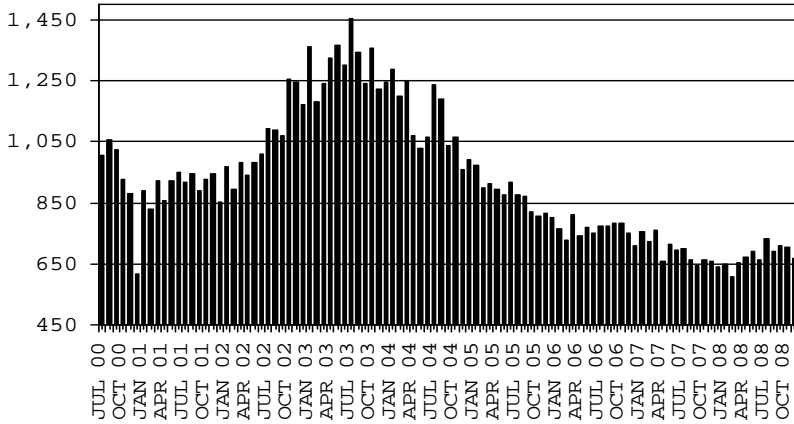
EXCLUDES: PRIOR MONTH NET TOTALS OF 839 CASES; 1,765 RECIPIENTS; \$51,481.

# CHART 1B

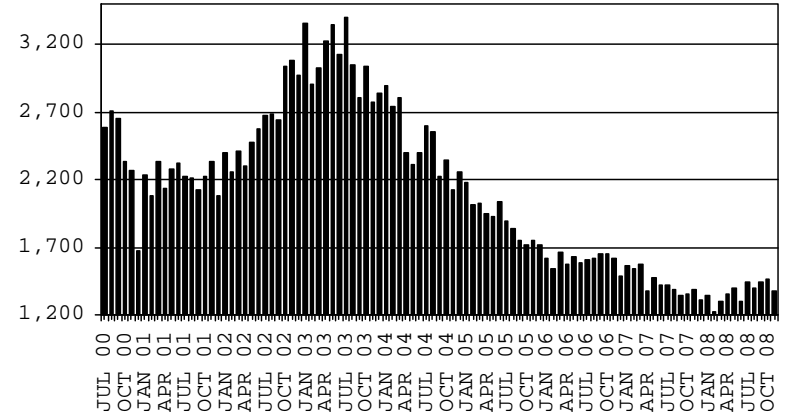
## CASH ASSISTANCE PROGRAM CASES WITH GRANT UNDER \$100

### COMPARISON OF CASES, RECIPIENTS, PAYMENTS & AVERAGE PAYMENTS FOR 2000, 2001, 2002, 2003, 2004, 2005, 2006, 2007, & 2008

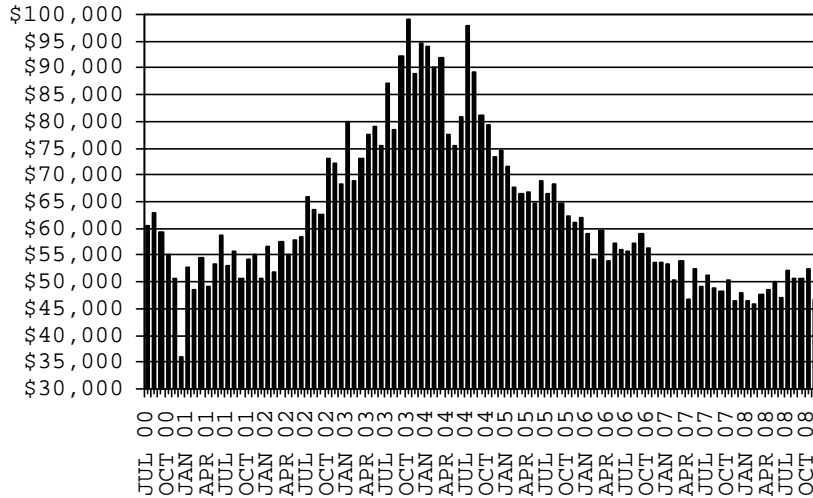
**CASES**



**RECIPIENTS**



**PAYMENTS**



**AVERAGE PAYMENTS PER RECIPIENT**

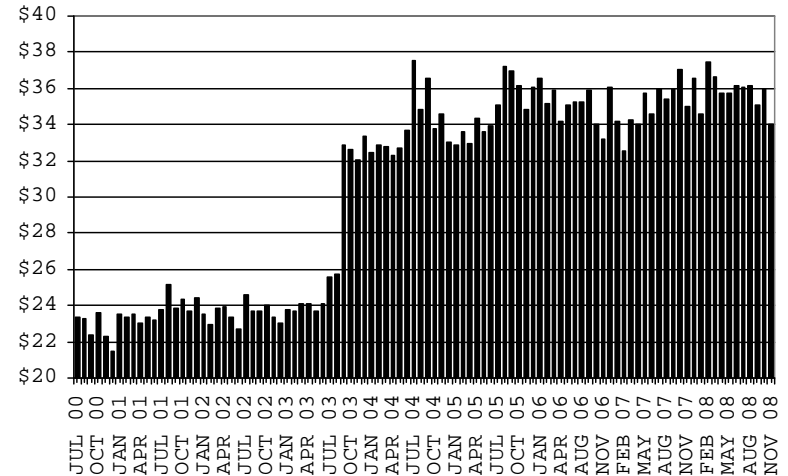


TABLE 1C 1/

CASH ASSISTANCE UNEMPLOYED PARENT PROGRAM: ARIZONA  
CASES WITH GRANT UNDER \$100

	NOVEMBER 2008								CHANGE FROM			NOVEMBER 2007		
					AVERAGE		AVERAGE		OCTOBER 2008			NOVEMBER 2007		
	FAMILIES (CASES)	PERSONS (RECIP.)	ADULTS	CHILDREN	TOTAL PAYMENTS	PAYMENT/ CASE	PAYMENT/ RECIP.	FAMILIES (CASES)	PERSONS (RECIP.)	TOTAL PAYMENTS	FAMILIES (CASES)	PERSONS (RECIP.)	TOTAL PAYMENTS	
ARIZONA	21	67	22	45	1,368	65.14	20.42	(1)	(2)	64	11	26	789	
DISTRICT I														
MARICOPA	14	44	13	31	901	64.36	20.48	2	12	252	10	28	654	
DISTRICT II														
PIMA	3	11	5	6	163	54.33	14.82	0	0	(23)	0	1	33	
DISTRICT III														
APACHE	0	0	0	0	0	0.00	0.00	0	0	0	0	0	0	
COCONINO	0	0	0	0	0	0.00	0.00	(1)	(5)	(56)	0	0	0	
NAVAJO	0	0	0	0	0	0.00	0.00	0	0	0	0	0	0	
YAVAPAI	1	1	0	1	97	97.00	97.00	0	0	0	1	1	97	
DISTRICT IV														
LA PAZ	0	0	0	0	0	0.00	0.00	(1)	(5)	(24)	(1)	(5)	(42)	
MOHAVE	2	9	4	5	146	73.00	16.22	1	4	69	1	4	65	
YUMA	1	2	0	2	61	61.00	30.50	(1)	(5)	(97)	1	2	61	
DISTRICT V														
GILA	0	0	0	0	0	0.00	0.00	0	0	0	0	0	0	
PINAL	0	0	0	0	0	0.00	0.00	(1)	(3)	(57)	(1)	(5)	(79)	
DISTRICT VI														
COCHISE	0	0	0	0	0	0.00	0.00	0	0	0	0	0	0	
GRAHAM	0	0	0	0	0	0.00	0.00	0	0	0	0	0	0	
GREENLEE	0	0	0	0	0	0.00	0.00	0	0	0	0	0	0	
SANTA CRUZ	0	0	0	0	0	0.00	0.00	0	0	0	0	0	0	

EXCLUDES: PRIOR MONTH NET TOTALS OF 64 CASES; 238 RECIPIENTS; \$3,481.

# CHART 1C

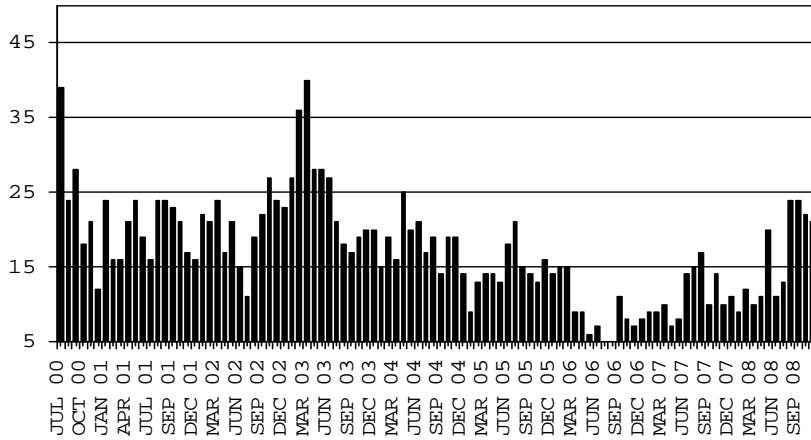
## CASH ASSISTANCE UNEMPLOYED PARENT PROGRAM

### CASES WITH GRANT UNDER \$100

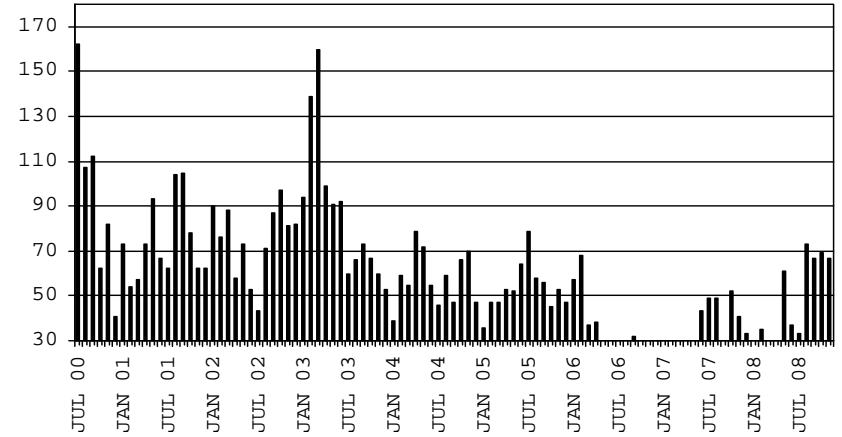
#### COMPARISON OF CASES, RECIPIENTS, PAYMENTS & AVERAGE PAYMENTS

FOR 2000, 2001, 2002, 2003, 2004, 2005, 2006, 2007, & 2008

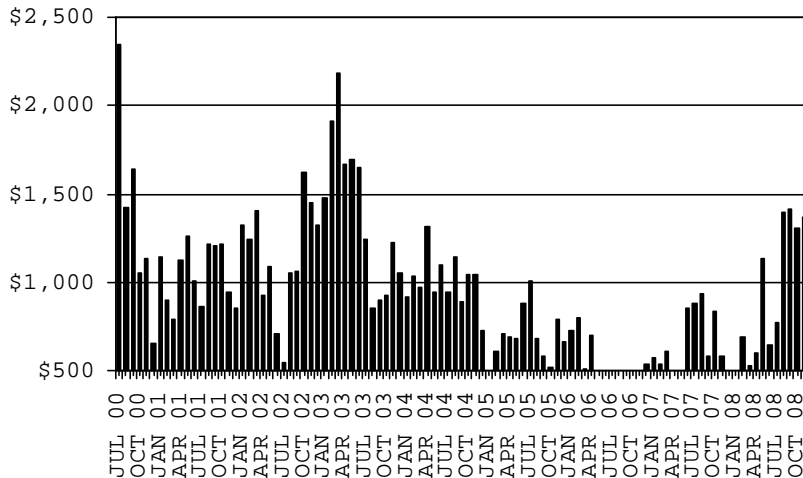
**CASES**



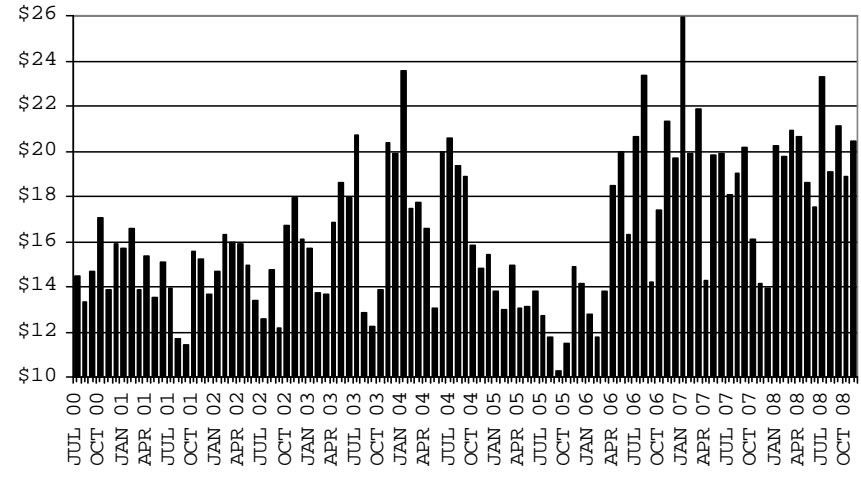
**RECIPIENTS**



**PAYMENTS**



**AVERAGE PAYMENTS PER RECIPIENT**



**TABLE 2**  
**GENERAL ASSISTANCE: ARIZONA 1,**

	CHANGE FROM											
	NOVEMBER 2008					OCTOBER 2008			NOVEMBER 2007			
	NUMBER OF CASES	PERSONS (RECIP.)	TOTAL PAYMENTS	AVERAGE PAYMENT/ CASE	AVERAGE PAYMENT/ RECIP.	NUMBER OF CASES	PERSONS (RECIP.)	TOTAL PAYMENTS	NUMBER OF CASES	PERSONS (RECIP.)	TOTAL PAYMENTS	
ARIZONA	1,589	1,597	236,498	148.83	148.09	53	54	6,181	243	247	30,838	
DISTRICT I												
MARICOPA	716	718	105,820	147.79	147.38	50	50	6,992	169	171	21,726	
DISTRICT II												
PIMA	385	388	57,705	149.88	148.72	(4)	(4)	(1,091)	20	23	3,074	
DISTRICT III												
APACHE	9	9	1,192	132.44	132.44	(2)	(2)	(346)	(1)	(2)	(346)	
COCONINO	22	22	3,156	143.45	143.45	(3)	(3)	(324)	2	1	286	
NAVAJO	37	38	4,877	131.81	128.34	4	4	279	(4)	(3)	(1,431)	
YAVAPAI	71	71	10,419	146.75	146.75	(1)	(1)	(107)	17	16	1,733	
DISTRICT IV												
LA PAZ	7	7	1,080	154.29	154.29	(1)	(1)	(103)	(4)	(4)	(368)	
MOHAVE	126	127	19,563	155.26	154.04	6	6	660	54	54	8,571	
YUMA	45	46	6,089	135.31	132.37	4	5	687	15	16	1,874	
DISTRICT V												
GILA	106	106	15,742	148.51	148.51	4	4	161	(29)	(29)	(5,718)	
PINAL	11	11	1,383	125.73	125.73	3	3	259	(19)	(19)	(3,222)	
	95	95	14,359	151.15	151.15	1	1	(98)	(10)	(10)	(2,496)	
DISTRICT VI												
COCHISE	65	65	10,855	167.00	167.00	(4)	(4)	(627)	4	4	1,437	
GRAHAM	53	53	8,779	165.64	165.64	(2)	(2)	(346)	4	4	1,276	
GREENLEE	5	5	865	173.00	173.00	(3)	(3)	(454)	0	0	0	
SANTA CRUZ	1	1	173	173.00	173.00	0	0	0	(3)	(3)	(454)	
	6	6	1,038	173.00	173.00	1	1	173	3	3	615	

1/EXCLUDES: PRIOR MONTH NET TOTALS OF : 295 CASES; 295 RECIPIENTS; \$67,864.  
REFUGEE RESETTLEMENT PROGRAM: 458 CASES; 717 RECIPIENTS; \$128,584.

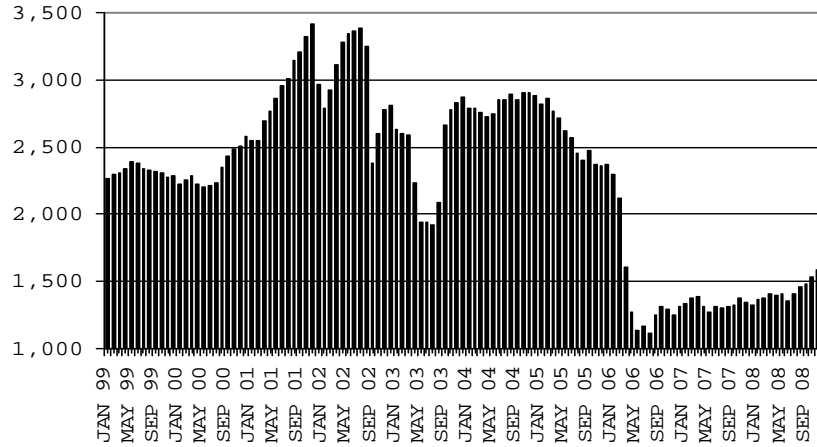
# CHART 2

## GENERAL ASSISTANCE PROGRAM

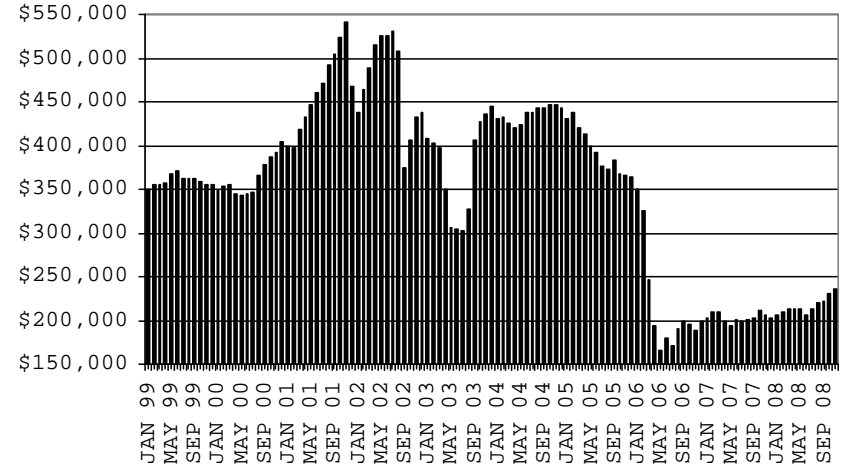
### COMPARISON OF CASES, PAYMENTS & AVERAGE PAYMENTS

FOR 1999, 2000, 2001, 2002, 2003, 2004, 2005, 2006, 2007, & 2008

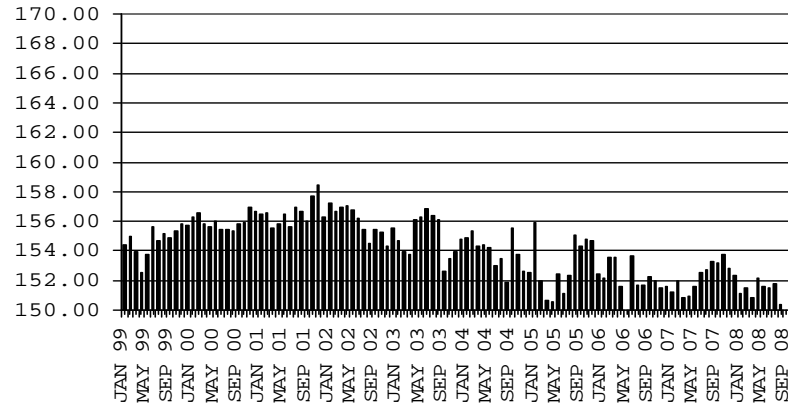
#### CASES



#### PAYMENTS



#### AVERAGE PAYMENT PER CASE



**TABLE 4**

**TUBERCULOSIS CONTROL: ARIZONA 1/**

	NOVEMBER 2008					CHANGE FROM			NOVEMBER 2007		
	NUMBER OF CASES	PERSONS (RECIP.)	TOTAL PAYMENTS	AVERAGE PAYMENT/ CASE	AVERAGE PAYMENT/ RECIP.	NUMBER OF CASES	PERSONS (RECIP.)	TOTAL PAYMENTS	NUMBER OF CASES	PERSONS (RECIP.)	TOTAL PAYMENTS
ARIZONA	7	7	753	107.57	107.57	1	1	110	(5)	(5)	(629)
DISTRICT I											
MARICOPA	7	7	753	107.57	107.57	1	1	110	(4)	(4)	(521)
DISTRICT II											
PIMA	0	0	0	0.00	0.00	0	0	0	0	0	0
DISTRICT III	0	0	0	0	0.00	0	0	0	(1)	(1)	(108)
APACHE	0	0	0	0.00	0.00	0	0	0	0	0	0
COCONINO	0	0	0	0.00	0.00	0	0	0	0	0	0
NAVAJO	0	0	0	0.00	0.00	0	0	0	0	0	0
YAVAPAI	0	0	0	0.00	0.00	0	0	0	(1)	(1)	(108)
DISTRICT IV	0	0	0	0.00	0.00	0	0	0	0	0	0
LA PAZ	0	0	0	0.00	0.00	0	0	0	0	0	0
MOHAVE	0	0	0	0.00	0.00	0	0	0	0	0	0
YUMA	0	0	0	0.00	0.00	0	0	0	0	0	0
DISTRICT V	0	0	0	0.00	0.00	0	0	0	0	0	0
GILA	0	0	0	0.00	0.00	0	0	0	0	0	0
PINAL	0	0	0	0.00	0.00	0	0	0	0	0	0
DISTRICT VI	0	0	0	0.00	0.00	0	0	0	0	0	0
COCHISE	0	0	0	0.00	0.00	0	0	0	0	0	0
GRAHAM	0	0	0	0.00	0.00	0	0	0	0	0	0
GREENLEE	0	0	0	0.00	0.00	0	0	0	0	0	0
SANTA CRUZ	0	0	0	0.00	0.00	0	0	0	0	0	0

1/EXCLUDES: PRIOR MONTH NET TOTALS OF : 0 CASES; 0 RECIPIENTS; \$0.

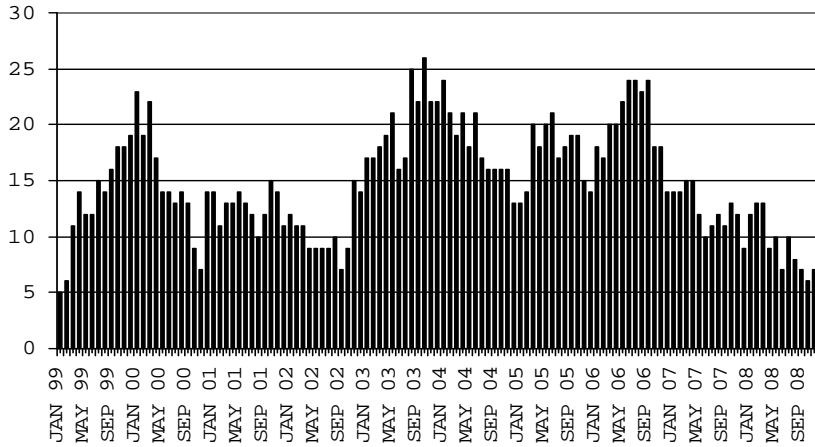
# CHART 4

## TUBERCULOSIS CONTROL PROGRAM

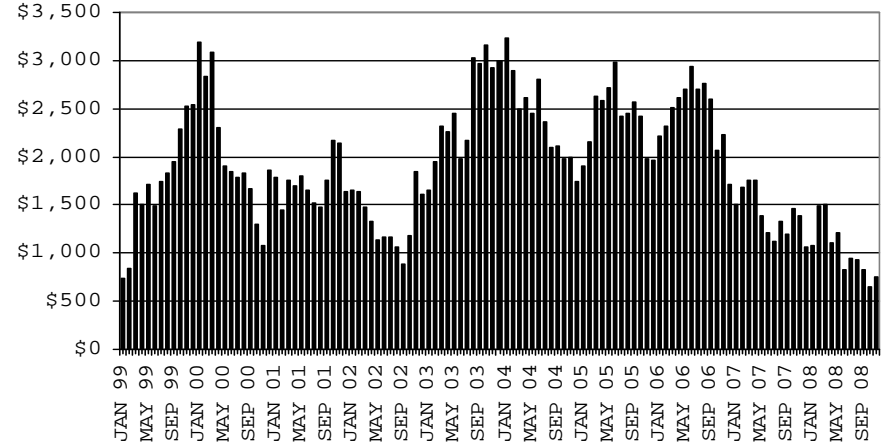
### COMPARISON OF CASES, PAYMENTS & AVERAGE PAYMENTS

FOR 1999, 2000, 2001, 2002, 2003, 2004, 2005, 2006, 2007, & 2008

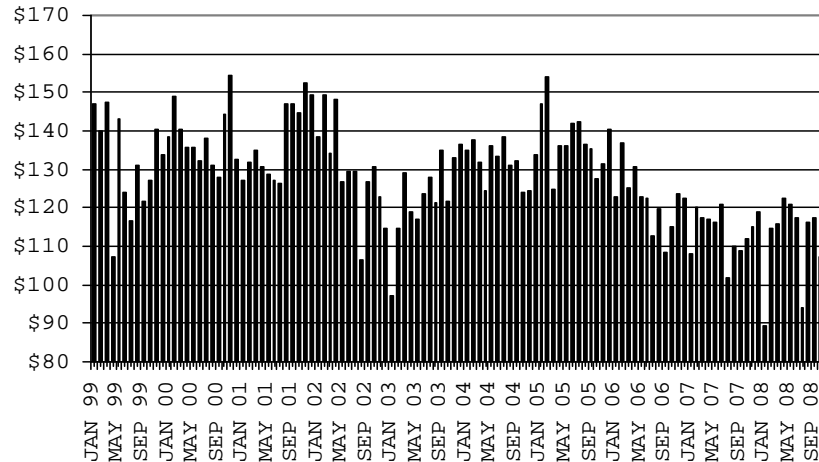
**CASES**



**PAYMENTS**



**AVERAGE PAYMENT PER CASE**





**TABLE 6**

**SUPPLEMENTAL NUTRITION ASSISTANCE PROGRAM: ARIZONA 1**

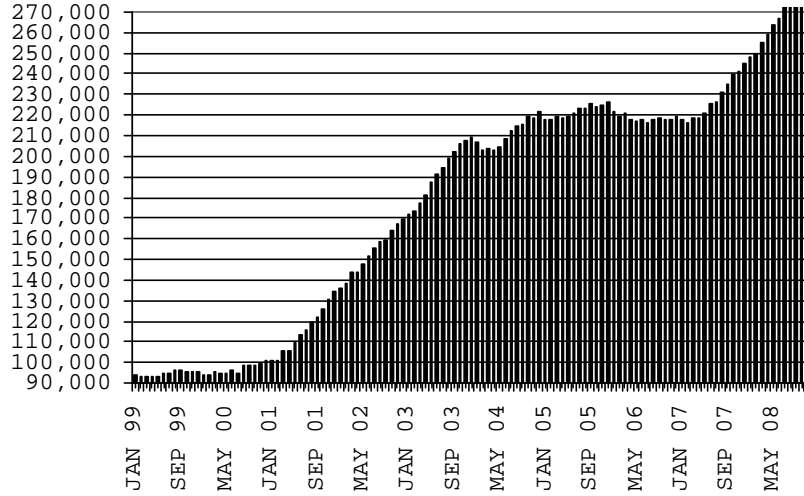
	CHANGE FROM										
	NOVEMBER 2008					OCTOBER 2008			NOVEMBER 2007		
	HOUSEHOLDS	PERSONS	TOTAL COUPON ISSUANCE	AVERAGE ALLOT./ HOUSEHOLD	AVERAGE ALLOT./ PERSON	HOUSEHOLDS	PERSONS	TOTAL COUPON ISSUANCE	HOUSEHOLDS	PERSONS	TOTAL COUPON ISSUANCE
ARIZONA	297,513	721,318	80,841,365	271.72	112.07	5,448	14,741	1,435,471	56,245	132,059	20,205,916
DISTRICT I											
MARICOPA	152,242	371,907	42,541,282	279.43	114.39	2,899	8,133	774,368	31,989	78,043	11,674,494
DISTRICT II											
PIMA	52,076	118,060	13,259,272	254.61	112.31	718	1,763	144,155	9,134	19,555	3,098,326
DISTRICT III											
APACHE	6,762	20,281	2,177,705	322.05	107.38	16	98	(1,020)	468	743	275,888
COCONINO	6,313	18,045	1,886,649	298.85	104.55	37	159	28,057	899	2,209	360,423
NAVAJO	10,665	29,458	3,143,374	294.74	106.71	176	454	36,498	1,292	3,075	552,634
YAVAPAI	8,850	18,274	2,011,427	227.28	110.07	349	786	79,892	2,321	5,011	683,333
DISTRICT IV											
LA PAZ	1,504	3,233	368,049	244.71	113.84	68	116	17,173	210	373	71,604
MOHAVE	13,858	28,757	3,271,034	236.04	113.75	252	582	53,803	2,928	5,545	837,024
YUMA	12,062	32,669	3,325,021	275.66	101.78	144	535	58,945	1,659	4,393	604,133
DISTRICT V											
GILA	4,101	9,367	1,057,088	257.76	112.85	56	91	11,324	584	1,153	200,393
PINAL	15,321	38,982	4,371,854	285.35	112.15	386	1,122	137,520	2,783	7,384	1,098,198
DISTRICT VI											
COCHISE	8,140	18,035	1,922,135	236.13	106.58	144	393	34,559	1,298	2,855	428,891
GRAHAM	2,061	4,784	524,777	254.62	109.69	39	49	4,903	(9)	(150)	46,248
GREENLEE	246	488	53,392	217.04	109.41	10	25	2,126	3	(38)	17
SANTA CRUZ	3,312	8,978	928,306	280.29	103.40	154	435	53,168	686	1,908	274,310

1/EXCLUDES: PRIOR MONTH NET TOTALS OF : 10,214 CASES; 27,565 RECIPIENTS; \$1,803,981.  
 AGED CANCELATIONS: 0 CASES; 0 RECIPIENTS; 0.  
 SNAP COUPON CONVERSIONS: 0 CASES; 0 RECIPIENTS; \$0.  
 SNAP REINSTATED: 0 CASES; \$0.  
 SNAP ZERO PAY: 8,546 CASES; 35,436 RECIPIENTS.

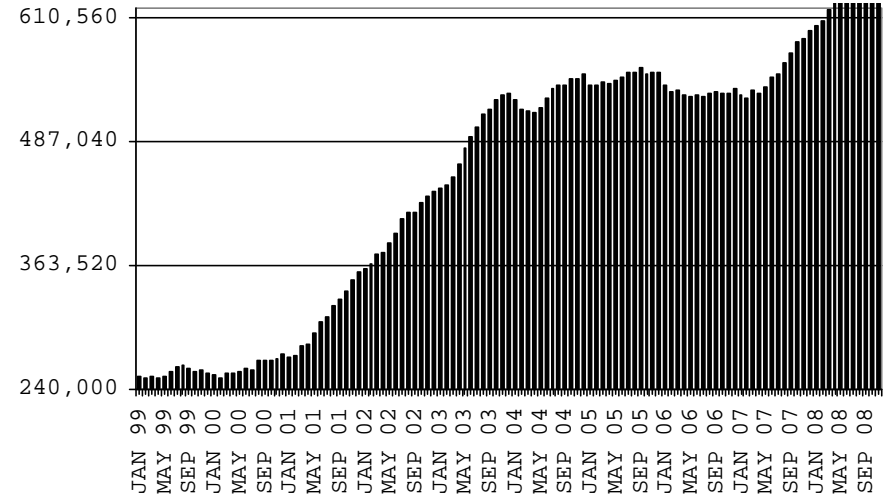
# CHART 6

## SUPPLEMENTAL NUTRITION ASSISTANCE PROGRAM (SNAP) COMPARISON OF HOUSEHOLDS, RECIPIENTS, PAYMENTS & AVERAGE PAYMENTS FOR 1999, 2000, 2001, 2002, 2003, 2004, 2005, 2006, 2007, & 2008

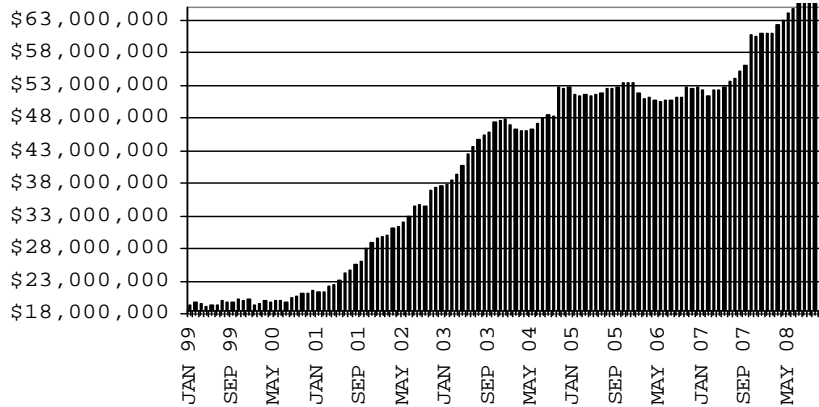
### HOUSEHOLDS



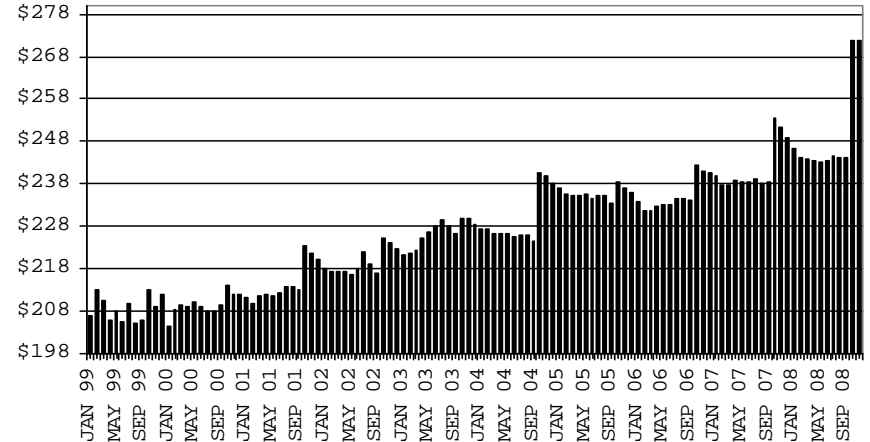
### RECIPIENTS



### TOTAL PAYMENTS



### AVERAGE PAYMENT PER HOUSEHOLD



**TABLE 7A**  
**MEDICAL ASSISTANCE PROGRAM**  
**RECIPIENTS**

**NOVEMBER 2008**

	SOBRA WOMAN 133% FPL	SOBRA CHILD	ADULT W/O CHILD 100% FPL	FOSTER CARE	1931 36% FPL	FEDERAL EMERGENCY SERVICES	INFANTS	ADULT W/O CHILD 40% FPL	MEDICAL W/SPEND DOWN	SOBRA WOMAN 100% FPL	SOBRA CHILD 100% FPL	TRANSITIONAL MEDICAL T1 - T4	1931 100% FPL	YATI	OTHER	TOTAL CASES
ARIZONA	11,677	64,801	41,762	10,939	291,341	83,741	49,038	105,517	5,829	3,603	176,616	43,602	85,547	266	25,254	999,533
DISTRICT I																
MARICOPA	6,171	36,448	18,307	5,562	156,982	64,542	29,204	48,738	2,977	1,830	99,894	20,870	40,493	146	12,526	544,690
DISTRICT II																
PIMA	1,819	10,034	8,283	3,066	44,633	10,384	6,844	19,329	914	586	26,853	7,814	14,852	80	4,516	160,007
DISTRICT III																
APACHE	214	1,461	828	40	10,618	84	954	4,161	72	88	3,728	1,083	2,273	3	399	26,006
COCONINO	363	1,447	1,143	134	7,353	524	1,143	3,134	124	110	3,870	1,287	2,261	3	359	23,255
NAVAJO	360	2,218	1,302	137	11,362	326	1,384	5,074	169	115	4,762	1,581	3,038	4	587	32,419
YAVAPAI	416	1,804	1,855	453	6,056	1,464	1,264	3,333	322	121	4,533	1,346	2,828	11	1,076	26,882
DISTRICT IV																
LA PAZ	41	233	216	8	1,217	168	188	636	28	13	672	162	362	0	163	4,107
MOHAVE	441	2,080	2,154	264	10,309	884	1,573	5,518	407	154	6,913	1,946	4,109	1	1,370	38,123
YUMA	590	2,463	2,489	273	11,238	2,111	1,927	3,593	241	202	8,604	2,623	5,413	2	1,363	43,132
DISTRICT V																
GILA	140	692	592	71	4,003	146	489	2,103	77	43	1,675	472	1,065	1	320	11,889
PINAL	604	3,679	1,996	556	15,708	1,768	2,237	5,701	276	176	7,733	2,098	4,173	11	1,228	47,944
DISTRICT VI																
COCHISE	247	1,128	1,420	262	6,284	678	908	2,464	127	86	3,592	1,204	2,337	3	778	21,518
GRAHAM	138	458	372	76	2,211	62	409	889	41	31	974	551	659	1	138	7,010
GREENLEE	20	33	38	8	255	10	48	105	6	5	133	50	60	0	22	793
SANTA CRUZ	113	623	767	29	3,112	590	466	739	48	43	2,680	515	1,624	0	409	11,758

**TABLE 7B**

**MEDICAL ASSISTANCE PROGRAM**

**RECIPIENTS**

**CHANGE FROM**

**OCTOBER 2008**

	SOBRA WOMAN 133% FPL	SOBRA CHILD	ADULT W/O CHILD 100% FPL	FOSTER CARE	1931 36% FPL	FEDERAL EMERGENCY SERVICES	INFANTS	ADULT W/O CHILD 40% FPL	MEDICAL W/SPEND DOWN	SOBRA WOMAN 100% FPL	SOBRA CHILD 100% FPL	TRANSITIONAL MEDICAL T1 - T4	1931 100% FPL	YATI	OTHER	TOTAL CASES
ARIZONA	(303)	(262)	(347)	237	3,209	(373)	(780)	113	(37)	(65)	579	980	267	1	139	3,358
DISTRICT I																
MARICOPA	(165)	(96)	(35)	149	1,730	(327)	(516)	(17)	(92)	(81)	703	218	321	2	112	1,906
DISTRICT II																
PIMA	(52)	(2)	14	73	311	(90)	(131)	(17)	69	7	24	398	69	3	(1)	675
DISTRICT III																
APACHE	(2)	(15)	(17)	(2)	(28)	(3)	(18)	(24)	(6)	7	(20)	8	(35)	0	1	(154)
COCONINO	(12)	(20)	(41)	9	104	(11)	14	(16)	(5)	15	(86)	8	(35)	(1)	(5)	(82)
NAVAJO	(6)	(21)	(14)	1	(58)	16	(46)	41	(4)	2	95	1	29	0	(18)	18
YAVAPAI	9	(5)	(24)	(8)	83	30	(34)	45	6	25	118	(60)	58	(3)	(2)	238
DISTRICT IV																
LA PAZ	(5)	1	(5)	(4)	21	2	(4)	25	2	(6)	(2)	(6)	6	0	8	33
MOHAVE	(32)	(57)	(54)	6	215	6	(33)	61	23	(11)	125	(60)	28	(1)	24	240
YUMA	(2)	(84)	(137)	0	398	(31)	(1)	23	(35)	(17)	(339)	372	(275)	0	(30)	(158)
DISTRICT V																
GILA	9	(17)	(19)	(2)	29	(8)	(3)	(37)	(2)	(1)	(34)	(37)	35	0	19	(68)
PINAL	(45)	58	(9)	9	352	11	(8)	37	(1)	(3)	(42)	38	57	2	14	470
DISTRICT VI																
COCHISE	(9)	2	(9)	5	(26)	21	(1)	(7)	7	2	(8)	66	(6)	(1)	26	62
GRAHAM	9	(5)	(13)	1	33	(3)	0	(12)	2	4	(27)	40	(9)	0	(12)	8
GREENLEE	2	0	(4)	0	16	1	(3)	3	0	(1)	32	0	6	0	0	52
SANTA CRUZ	(2)	(1)	20	0	29	13	4	8	(1)	(7)	40	(6)	18	0	3	118

**TABLE 7C**

**MEDICAL ASSISTANCE PROGRAM**

**RECIPIENTS**

**CHANGE FROM**

**NOVEMBER 2007**

	SOBRA WOMAN 133% FPL	SOBRA CHILD	ADULT W/O CHILD 100% FPL	FOSTER CARE	1931 36% FPL	FEDERAL EMERGENCY SERVICES	INFANTS	ADULT W/O CHILD 40% FPL	MEDICAL W/SPEND DOWN	SOBRA WOMAN 100% FPL	SOBRA CHILD 100% FPL	TRANSITIONAL MEDICAL T1 - T4	3E 1931 100% FPL	YATI	OTHER	TOTAL CASES
ARIZONA	181	2,841	4,045	1,225	32,172	(1,448)	(1,620)	16,418	530	282	17,128	827	9,021	25	3,026	84,653
DISTRICT I																
MARICOPA	253	2,118	2,302	735	22,687	(925)	(1,272)	9,826	84	157	11,734	(153)	5,057	34	1,676	54,313
DISTRICT II																
PIMA	78	562	871	280	3,944	(274)	(271)	2,930	119	38	1,724	871	1,006	1	500	12,379
DISTRICT III	(121)	247	169	68	1,730	(111)	(244)	1,103	130	13	1,254	(13)	980	(7)	259	5,457
APACHE	(55)	96	(31)	2	127	(13)	(20)	(86)	(1)	(6)	34	(43)	12	3	54	73
COCONINO	(19)	42	(6)	9	565	(4)	(66)	240	38	5	240	4	179	(8)	12	1,231
NAVAJO	(13)	105	14	23	447	5	(13)	418	14	(15)	423	0	319	2	67	1,796
YAVAPAI	(34)	4	192	34	591	(99)	(145)	531	79	29	557	26	470	(4)	126	2,357
DISTRICT IV	(29)	(181)	353	48	941	(216)	11	1,320	146	16	1,214	147	1,019	0	385	5,174
LA PAZ	3	0	7	(10)	25	(29)	14	79	5	(3)	95	(65)	45	0	20	186
MOHAVE	(36)	(54)	176	34	1,015	(95)	(1)	972	89	(2)	500	79	506	(1)	174	3,356
YUMA	4	(127)	170	24	(99)	(92)	(2)	269	52	21	619	133	468	1	191	1,632
DISTRICT V	(12)	(6)	215	70	1,902	47	36	956	30	34	1,094	(23)	737	1	128	5,209
GILA	17	(41)	83	1	(4)	16	25	178	(15)	13	199	0	133	(1)	52	656
PINAL	(29)	35	132	69	1,906	31	11	778	45	21	895	(23)	604	2	76	4,553
DISTRICT VI	12	101	135	24	968	31	120	283	21	24	108	(2)	222	(4)	78	2,121
COCHISE	2	17	81	10	295	20	62	194	7	13	90	47	121	(3)	52	1,008
GRAHAM	14	31	1	19	225	(14)	52	48	24	7	(162)	48	(17)	(1)	12	287
GREENLEE	(10)	0	0	(4)	(54)	4	(11)	2	0	4	25	(17)	0	0	(1)	(62)
SANTA CRUZ	6	53	53	(1)	502	21	17	39	(10)	0	155	(80)	118	0	15	888

# CHART 7

## MEDICAL ASSISTANCE PROGRAM COMPARISON OF RECIPIENTS FOR 1999, 2000, 2001, 2002, 2003, 2004, 2005, 2006, 2007, & 2008

### TOTAL RECIPIENTS

