

\*\*\*\* STATISTICAL BULLETIN \*\*\*\*  
ARIZONA DEPARTMENT OF ECONOMIC SECURITY  
FAMILY ASSISTANCE ADMINISTRATION  
BOX 6123, PHOENIX, ARIZONA 85005  
PHONE (602) 542-3678

MAY 2007

THIS ISSUE OF THE STATISTICAL BULLETIN COMPARES MAY 2007 DATA FOR EACH OF THE INDICATED PROGRAMS WITH THE INFORMATION FOR APRIL 2007 AND MAY 2006. STATEWIDE SUMMARIES OF ACTIVITY WITHIN EACH OF THE SPECIFIC PROGRAMS FOR THIS REPORT PERIOD ARE DISCUSSED BELOW. THE TABLES COMPARE CURRENT AND PRIOR MONTH DATA. DISTRICT AND COUNTY COMPARISONS ARE PROVIDED WITHIN THIS BULLETIN

CASH ASSISTANCE (CA)

COMPARING TO APRIL 2007, MAY 2007 CASES DECREASED BY 235 (0.67%) TO 34,650. RECIPIENTS DECREASED BY 749 (1.00%) TO 74,279. PAYMENTS DECREASED BY \$87,605 (0.94%) TO \$9,271,116. AVERAGE PAYMENT PER CASE DECREASED BY \$0.71 (0.26%) TO \$267.56. PAYMENT PER RECIPIENT INCREASED BY \$0.07 (0.06%) TO \$124.81.

COMPARING TO MAY 2006, MAY 2007 CASES DECREASED BY 3,343 (8.80%). RECIPIENTS DECREASED BY 9,141 (10.96%). TOTAL PAYMENTS DECREASED BY \$1,025,432 (9.96%). THE AVERAGE PAYMENT PER CASE DECREASED BY \$3.45 (1.27%). THE AVERAGE PAYMENT PER RECIPIENT INCREASED BY \$1.38 (1.23%).

CASH ASSISTANCE UNEMPLOYED PARENT PROGRAM (CA-UP)

COMPARING TO APRIL 2007, MAY 2007 CASES DECREASED BY 11 (2.02%) TO 534. RECIPIENTS DECREASED BY 45 (2.19%) TO 2,013. PAYMENTS DECREASED BY \$6,830 (3.43%) TO \$192,487. AVERAGE PAYMENT PER CASE DECREASED BY \$5.26 (1.44%) TO \$360.46. PAYMENT PER RECIPIENT DECREASED BY \$1.23 (1.27%) TO \$95.62.

COMPARING TO MAY 2006, MAY 2007 CASES DECREASED BY 38 (6.64%). RECIPIENTS DECREASED BY 102 (4.82%). TOTAL PAYMENTS DECREASED BY \$8,920 (4.43%). THE AVERAGE PAYMENT PER CASE INCREASED BY \$8.35 (2.37%). THE AVERAGE PAYMENT PER RECIPIENT INCREASED BY \$0.39 (0.41%).

CASH ASSISTANCE WITH GRANT UNDER \$100 (CA-MOE)

COMPARING TO APRIL 2007, MAY 2007 CASES INCREASED BY 54 (8.18%) TO 714. RECIPIENTS INCREASED BY 93 (6.74%) TO 1,472. PAYMENTS INCREASED BY \$5,683 (12.12%) TO \$52,575. AVERAGE PAYMENT PER CASE INCREASED BY \$2.58 (3.63%) TO \$73.63. AVERAGE PAYMENT PER RECIPIENT INCREASED BY \$1.72 (5.06%) TO \$35.72.

COMPARING TO MAY 2006, MAY 2007 CASES DECREASED BY 54 (7.03%). RECIPIENTS DECREASED BY 156 (9.58%). TOTAL PAYMENTS DECREASED BY \$4,580 (8.01%). THE AVERAGE PAYMENT PER CASE DECREASED BY \$0.79 (1.06%). THE AVERAGE PAYMENT PER RECIPIENT INCREASED BY \$0.61 (1.74%).

CASH ASSISTANCE UNEMPLOYED PARENT PROGRAM WITH GRANT UNDER \$100 (CA-UP-MOE) NEW PROGRAM STARTING 7/01

COMPARING TO APRIL 2007, MAY 2007 CASES INCREASED BY 1 (14.29%) TO 8. RECIPIENTS DECREASED BY 1 (3.85%) TO 25. PAYMENTS INCREASED BY \$125 (33.69%) TO \$496. AVERAGE PAYMENT PER CASE INCREASED BY \$9.00 (16.98%) TO \$62.00. PAYMENT PER RECIPIENT INCREASED BY \$5.57 (39.03%) TO \$19.84.

COMPARING TO MAY 2006, MAY 2007 CASES INCREASED BY 2 (33.33%). RECIPIENTS INCREASED BY 7 (1.89%). TOTAL PAYMENTS INCREASED BY \$136 (37.78%). THE AVERAGE PAYMENT PER CASE INCREASED BY \$2.00 (3.33%). THE AVERAGE PAYMENT PER RECIPIENT DECREASED BY \$0.16 (0.80%).

GENERAL ASSISTANCE (GA)

COMPARING TO APRIL 2007, MAY 2007 CASES DECREASED BY 45 (3.42%) TO 1,269. RECIPIENTS DECREASED BY 47 (3.55%) TO 1,276. PAYMENTS DECREASED BY \$6,292 (3.15%) TO \$193,429. AVERAGE PAYMENT PER CASE INCREASED BY \$0.44 (0.29%) TO \$152.43. AVERAGE PAYMENT PER RECIPIENT INCREASED BY \$0.63 (0.42%) TO \$151.59.

COMPARING TO MAY 2006, MAY 2007 CASES INCREASED BY 132 (11.61%). RECIPIENTS INCREASED BY 131 (11.44%). TOTAL PAYMENTS INCREASED BY \$27,277 (16.42%). THE AVERAGE PAYMENT PER CASE INCREASED BY \$6.30 (4.31%). THE AVERAGE PAYMENT PER RECIPIENT INCREASED BY \$6.48 (4.46%).

TUBERCULOSIS CONTROL PROGRAM (TC)

COMPARING TO APRIL 2007, MAY 2007 CASES DECREASED BY 3 (20.00%) TO 12. RECIPIENTS DECREASED BY 3 (20.00%) TO 12. PAYMENTS DECREASED BY \$363 (20.66%) TO \$1,394. AVERAGE PAYMENT PER CASE DECREASED BY \$0.96 (0.82%) TO \$116.17. AVERAGE PAYMENT PER RECIPIENT DECREASED BY \$0.96 (0.82%) TO \$116.17.

COMPARING TO MAY 2006, MAY 2007 CASES DECREASED BY 10 (45.45%). RECIPIENTS DECREASED BY 10 (45.45%). TOTAL PAYMENTS DECREASED BY \$1,309 (48.43%). THE AVERAGE PAYMENT PER CASE DECREASED BY \$6.69 (5.45%). THE AVERAGE PAYMENT PER RECIPIENT DECREASED BY \$6.69 (5.45%).

SUPPLEMENTAL PAYMENTS PROGRAM (SPP)

AS A RESULT OF ARIZONA'S OMNIBUS BUDGET RECONCILIATION BILL, HB 2535, THE SUPPLEMENTAL PAYMENT PROGRAM (SPP) IS BEING SUSPENDED EFFECTIVE JULY, 2003 THROUGH JUNE, 2004.

FOOD STAMP PROGRAM (FS)

COMPARING TO APRIL 2007, MAY 2007 FOOD STAMP HOUSEHOLDS INCREASED BY 0 (0.00%) TO 218,617. PERSONS RECEIVING FOOD STAMPS INCREASED BY 0 (0.00%) TO 535,644. TOTAL COUPON ISSUANCE INCREASED BY \$199 (0.00%) TO \$52,226,184. THE AVERAGE HOUSEHOLD ALLOTMENT DECREASED BY \$0.00 (0.00%) TO \$238.89. THE AVERAGE ALLOTMENT PER PERSON DECREASED BY \$0.00 (0.00%) TO \$97.50.

COMPARING TO MAY 2006, MAY 2007 FOOD STAMP HOUSEHOLDS INCREASED BY 1,715 (0.79%). PERSONS RECEIVING FOOD STAMPS INCREASED BY 4,100 (0.77%). TOTAL COUPON ISSUANCE INCREASED BY \$1,656,914 (3.28%). THE AVERAGE ALLOTMENT PER HOUSEHOLD INCREASED BY \$5.75 (2.46%). THE AVERAGE ALLOTMENT PER PERSON INCREASED BY \$2.36 (2.48%).

MEDICAL ASSISTANCE PROGRAM (MA) NEW TABLE INCLUDES PROP. 204 CATEGORIES

COMPARING TO APRIL 2007, MAY 2007 TOTAL RECIPIENTS TOTAL RECIPIENTS INCREASED BY 1,639 (0.19%). SOBRA WOMEN AT 140% FPL INCREASED BY 108 (0.96%). SOBRA CHILDREN DECREASED BY 181 (0.31%). ADULTS W/O CHILD AT 100% DECREASED BY 124 (0.34%). FOSTER CARE INCREASED BY 74 (0.84%). 1931 AT 36% FPL DECREASED BY 1,284 (0.52%). EMERGENCY SERVICES INCREASED BY 397 (0.47%). INFANTS DECREASED BY 109 (0.22%). ADULT W/O CHILD AT 140% INCREASED BY 355 (0.45%). MEDICAL W/SPEND DOWN DECREASED BY 12 (0.23%). SOBRA WOMAN AT 100% INCREASED BY 66 (1.99%). SOBRA CHILD AT 100% INCREASED BY 1,424 (0.94%). TRANSITIONAL MEDICAL DECREASED BY 31 (0.07%). 1931 AT 100% INCREASED BY 726 (1.01%). YATI INCREASED BY 1 (0.44%). ALL OTHER CATEGORIES INCREASED BY 229 (1.14%).

COMPARING TO MAY 2006, MAY 2007 TOTAL RECIPIENTS TOTAL RECIPIENTS DECREASED BY 8,152 (0.92%). SOBRA WOMEN AT 140% FPL INCREASED BY 290 (2.63%). SOBRA CHILDREN INCREASED BY 1,265 (2.21%). ADULTS W/O CHILD AT 100% DECREASED BY 1,695 (4.51%). FOSTER CARE INCREASED BY 336 (3.91%). 1931 AT 36% FPL DECREASED BY 10,005 (3.89%). EMERGENCY SERVICES INCREASED BY 988 (1.18%). INFANTS INCREASED BY 434 (0.89%). ADULT W/O CHILD AT 140% DECREASED BY 4,957 (5.86%). MEDICAL W/SPEND DOWN DECREASED BY 554 (9.61%). SOBRA WOMAN AT 100% INCREASED BY 219 (6.91%). SOBRA CHILD AT 100% INCREASED BY 5,069 (3.43%). TRANSITIONAL MEDICAL DECREASED BY 656 (1.46%). 1931 AT 100% DECREASED BY 420 (0.57%). YATI INCREASED BY 50 (28.25%). ALL OTHER CATEGORIES INCREASED BY 1,484 (7.90%).

# TANF SUMMARY

## TABLES 1, 1A, 1B, & 1C: ARIZONA 1

	MAY 2007							APRIL 2007			MAY 2006		
	FAMILIES (CASES)	PERSONS (RECIP.)	ADULTS	CHILDREN	TOTAL PAYMENTS	AVERAGE	AVERAGE	FAMILIES (CASES)	PERSONS (RECIP.)	TOTAL PAYMENTS	FAMILIES (CASES)	PERSONS (RECIP.)	TOTAL PAYMENTS
						PAYMENT/ CASE	PAYMENT/ RECIP.						
ARIZONA	35,906	77,789	18,613	59,176	9,516,674	265.04	122.34	(191)	(702)	(88,627)	(3,433)	(9,392)	(1,038,796)
DISTRICT I													
MARICOPA	19,619	42,941	9,530	33,411	5,234,189	266.79	121.89	(106)	(352)	(50,720)	(1,976)	(5,146)	(613,191)
DISTRICT II													
PIMA	6,893	14,490	3,685	10,805	1,813,745	263.13	125.17	(45)	(120)	(18,868)	(691)	(1,869)	(200,601)
DISTRICT III													
APACHE	124	283	90	193	32,281	260.33	114.07	(3)	(5)	469	8	31	3,820
COCONINO	262	553	140	413	64,842	247.49	117.25	(3)	0	(1,448)	(15)	(68)	(3,732)
NAVAJO	1,380	3,437	981	2,456	388,932	281.83	113.16	7	23	3,734	(60)	(148)	(13,476)
YAVAPAI	646	1,262	269	993	159,779	247.34	126.61	(6)	(33)	(3,890)	(38)	(135)	(8,965)
DISTRICT IV													
LA PAZ	231	506	157	349	61,538	266.40	121.62	(15)	(49)	(4,839)	(29)	(87)	(6,521)
MOHAVE	1,340	2,767	770	1,997	347,175	259.09	125.47	(18)	(62)	(5,317)	(130)	(320)	(25,847)
YUMA	1,112	2,439	506	1,933	293,027	263.51	120.14	18	44	2,816	(192)	(593)	(61,640)
DISTRICT V													
GILA	729	1,530	513	1,017	191,245	262.34	125.00	(8)	(67)	(5,058)	(77)	(305)	(30,874)
PINAL	1,905	4,250	1,123	3,127	503,407	264.26	118.45	19	35	5,515	(13)	(98)	(11,749)
DISTRICT VI													
COCHISE	979	1,967	474	1,493	250,857	256.24	127.53	(30)	(94)	(9,574)	(118)	(322)	(34,162)
GRAHAM	395	773	251	522	99,994	253.15	129.36	7	20	2,056	(59)	(184)	(18,287)
GREENLEE	53	114	28	86	14,435	272.36	126.62	3	10	873	(3)	(9)	(677)
SANTA CRUZ	238	477	96	381	61,228	257.26	128.36	(11)	(52)	(4,376)	(40)	(139)	(12,894)

1/EXCLUDES: PRIOR MONTH NET TOTALS OF 1,873 CASES; 4,528 RECIPIENTS; \$370,473.  
 1/GRANT DIVERSION TOTALS OF: 0 CASES;\$0.  
 ZERO PAY TOTALS OF 0 CASES; 0 RECIPIENTS.

	CURRENT MO. CASES	CURRENT MO. RECIP.	CURRENT MO. DOLLARS	PRIOR MO. CASES	PRIOR MO. RECIP.	PRIOR MO. DOLLARS
PASQUAYAOUI	255	756	\$81,846	15	50	2,484
WM APACHE	757	1,994	\$228,337	35	95	6,937
SALT RIVER	100	333	\$31,999	10	34	1,878
NAVAJO	0	0	\$0	0	0	0
HOPI	155	470	\$38,508	10	36	997
<b>TOTAL</b>	<b>1,267</b>	<b>3,553</b>	<b>\$380,690</b>	<b>70</b>	<b>215</b>	<b>\$12,296</b>

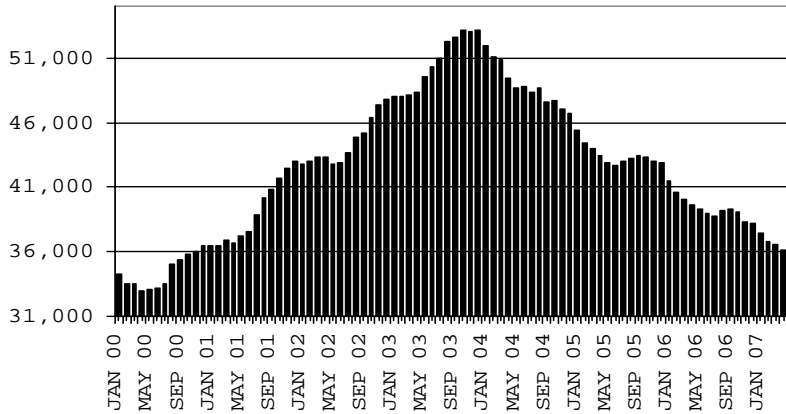
# TANF SUMMARY

TABLES 1, 1A, 1B, & 1C

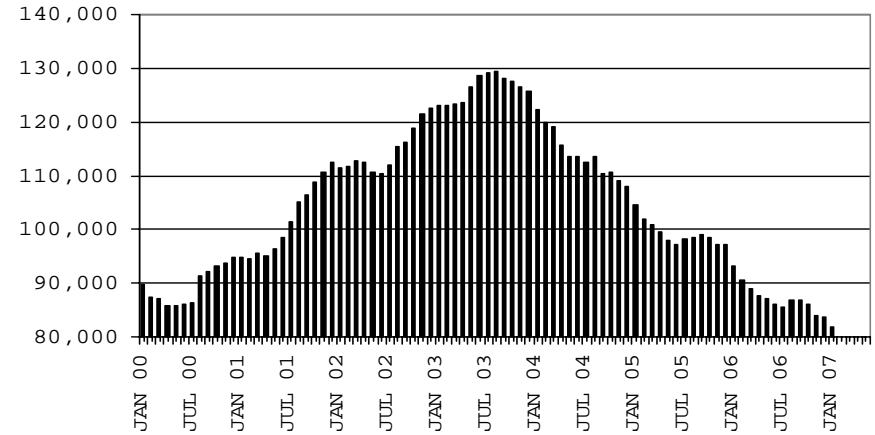
COMPARISON OF CASES, RECIPIENTS, PAYMENTS & AVERAGE PAYMENTS

FOR 2000, 2001, 2002, 2003, 2004, 2005 & 2006

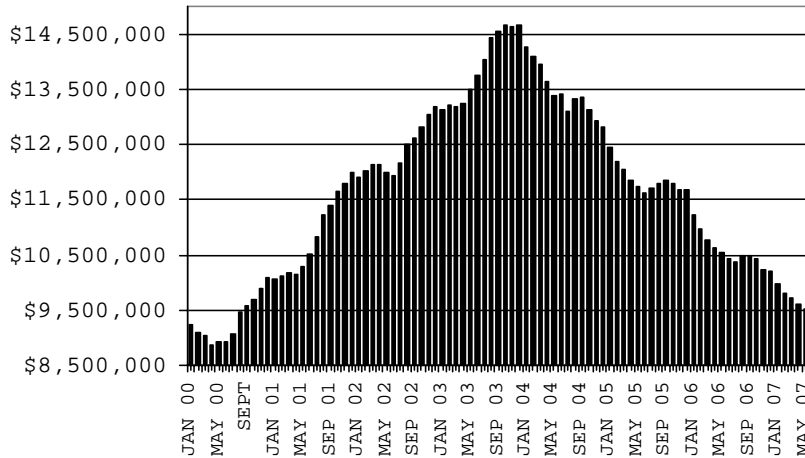
**CASES**



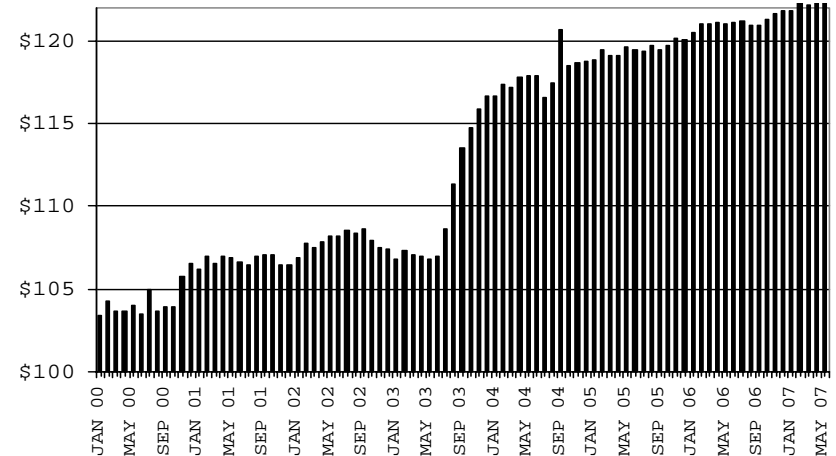
**RECIPIENTS**



**PAYMENTS**



**AVERAGE PAYMENTS PER RECIPIENT**



**TABLE 1**  
**CASH ASSISTANCE: ARIZONA 1.**

	MAY 2007							CHANGE FROM					
								APRIL 2007			MAY 2006		
	FAMILIES (CASES)	(RECIP.)	ADULTS	CHILDREN	TOTAL PAYMENTS	AVERAGE PAYMENT/ CASE	AVERAGE PAYMENT/ RECIP.	FAMILIES (CASES)	PERSONS (RECIP.)	TOTAL PAYMENTS	FAMILIES (CASES)	PERSONS (RECIP.)	TOTAL PAYMENTS
ARIZONA	34,650	74,279	17,321	56,958	9,271,116	267.56	124.81	(235)	(749)	(87,605)	(3,343)	(9,141)	(1,025,432)
DISTRICT I													
MARICOPA	19,004	41,315	9,010	32,305	5,128,326	269.86	124.13	(132)	(379)	(48,182)	(2,019)	(5,302)	(620,452)
DISTRICT II													
PIMA	6,667	13,859	3,445	10,414	1,769,375	265.39	127.67	(68)	(161)	(23,020)	(631)	(1,715)	(192,548)
DISTRICT III													
APACHE	109	243	76	167	30,148	276.59	124.07	(6)	(14)	99	4	16	2,975
COCONINO	250	519	126	393	63,064	252.26	121.51	(6)	(13)	(2,059)	(12)	(62)	(4,022)
NAVAJO	1,298	3,119	831	2,288	359,617	277.05	115.30	4	6	1,343	(56)	(127)	(11,582)
YAVAPAI	621	1,211	255	956	156,334	251.75	129.09	(2)	(18)	(2,360)	(38)	(119)	(9,905)
DISTRICT IV													
LA PAZ	221	472	141	331	58,195	263.33	123.29	(12)	(33)	(4,163)	(22)	(71)	(7,275)
MOHAVE	1,289	2,608	704	1,904	335,227	260.07	128.54	(9)	(42)	(2,546)	(117)	(300)	(26,977)
YUMA	1,071	2,321	467	1,854	285,214	266.31	122.88	14	34	2,711	(183)	(566)	(59,715)
DISTRICT V													
GILA	684	1,411	447	964	181,273	265.02	128.47	(10)	(57)	(3,380)	(74)	(269)	(26,847)
PINAL	1,824	4,002	1,019	2,983	485,792	266.33	121.39	18	22	3,959	(10)	(78)	(10,200)
DISTRICT VI													
COCHISE	947	1,881	443	1,438	245,844	259.60	130.70	(24)	(73)	(8,549)	(104)	(282)	(31,385)
GRAHAM	386	754	242	512	98,566	255.35	130.72	7	22	1,928	(43)	(136)	(14,330)
GREENLEE	51	109	26	83	14,051	275.51	128.91	3	9	917	(4)	(11)	(901)
SANTA CRUZ	228	455	89	366	60,090	263.55	132.07	(12)	(52)	(4,303)	(34)	(119)	(12,268)

1/EXCLUDES: PRIOR MONTH NET TOTALS OF: 1,089 CASES; 2,714 RECIPIENTS; \$298,619.  
GRANT DIVERSION TOTALS OF: 0 CASES; \$0  
ZERO PAY TOTALS OF 0 CASES; 0 RECIPIENTS.

	CURRENT MO. CASES	CURRENT MO. RECIP.	CURRENT MO. DOLLARS	PRIOR MO. CASES	PRIOR MO. RECIP	PRIOR MO. DOLLARS
PASQUAYAAQUI	245	713	77,825	14	45	2,434
WM APACHE	703	1,767	206,758	27	66	4,948
SALT RIVER	100	333	31,999	10	34	1,878
NAVAJO	0	0	0	0	0	0
HOPI	155	470	38,508	10	36	997
<b>TOTAL</b>	<b>1,203</b>	<b>3,283</b>	<b>355,090</b>	<b>61</b>	<b>181</b>	<b>10,257</b>

CASES WITH GRANT UNDER \$100 (SEE TABLE 1B).

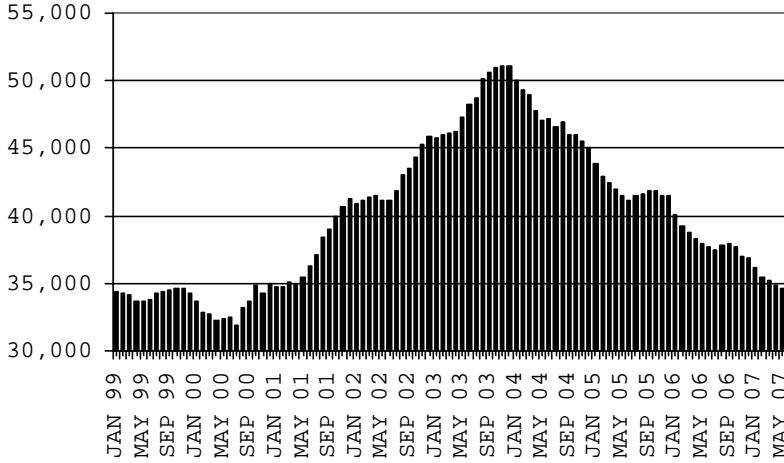
# CHART 1

## CASH ASSISTANCE PROGRAM

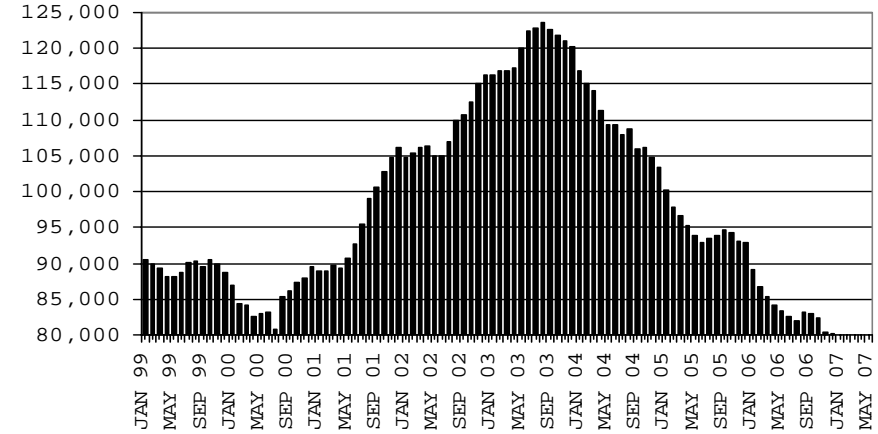
### COMPARISON OF CASES, RECIPIENTS, PAYMENTS & AVERAGE PAYMENTS

FOR 1999, 2000, 2001, 2002, 2003, 2004, 2005 & 2006

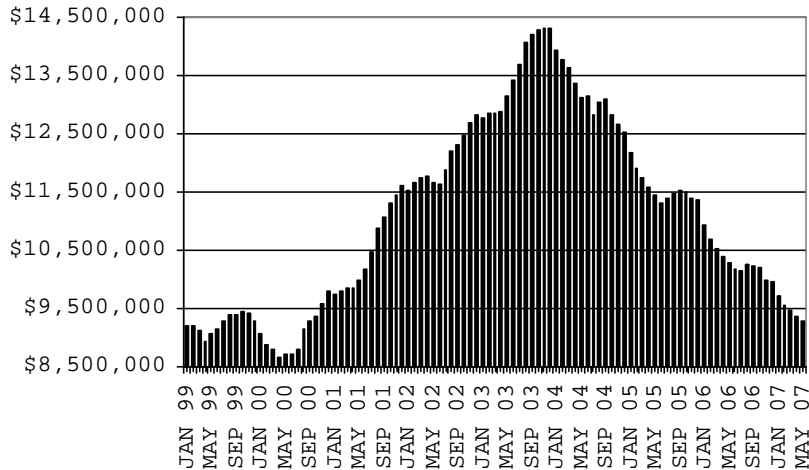
**CASES**



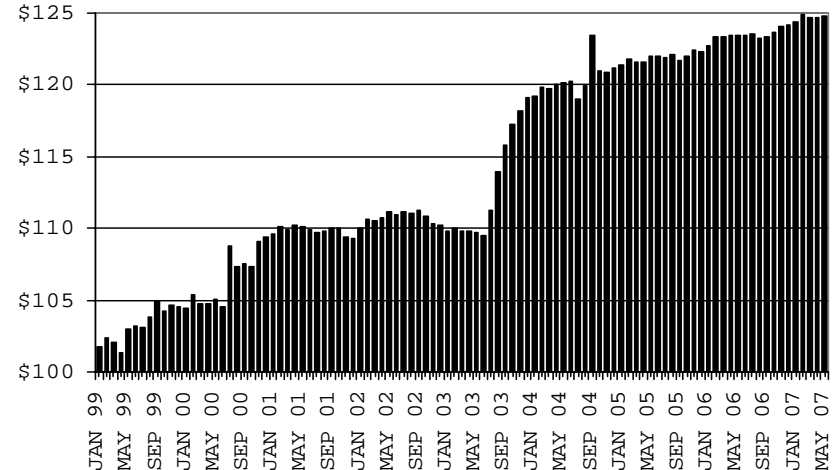
**RECIPIENTS**



**PAYMENTS**



**AVERAGE PAYMENTS PER RECIPIENT**



**TABLE 1A  
CA-UP**

**CASH ASSISTANCE UNEMPLOYED PARENT PROGRAM: ARIZONA 1**

	MAY 2007							CHANGE FROM			MAY 2006		
	FAMILIES (CASES)	PERSONS (RECIP.)	ADULTS	CHILDREN	TOTAL PAYMENTS	AVERAGE PAYMENT/ CASE	AVERAGE PAYMENT/ RECIP.	FAMILIES (CASES)	PERSONS (RECIP.)	TOTAL PAYMENTS	FAMILIES (CASES)	PERSONS (RECIP.)	TOTAL PAYMENTS
ARIZONA	534	2,013	874	1,139	192,487	360.46	95.62	(11)	(45)	(6,830)	(38)	(102)	(8,920)
DISTRICT I													
MARICOPA	216	778	301	477	76,897	356.00	98.84	(8)	(51)	(5,910)	12	67	6,115
DISTRICT II													
PIMA	91	355	157	198	34,342	377.38	96.74	3	11	2,115	(21)	(64)	(5,718)
DISTRICT III													
APACHE	5	19	7	12	1,445	289.00	76.05	1	4	75	3	12	680
COCONINO	4	17	8	9	1,351	337.75	79.47	1	6	565	2	7	648
NAVAJO	73	301	143	158	28,546	391.04	94.84	7	27	2,550	(6)	(26)	(2,189)
YAVAPAI	7	19	6	13	2,285	326.43	120.26	(4)	(14)	(1,530)	2	3	988
DISTRICT IV													
LA PAZ	9	33	16	17	3,239	359.89	98.15	(2)	(10)	(688)	2	8	1,250
MOHAVE	27	118	50	68	9,936	368.00	84.20	(8)	(17)	(2,429)	6	31	2,231
YUMA	16	64	25	39	5,954	372.13	93.03	1	3	(153)	(7)	(18)	(1,637)
DISTRICT V													
GILA	27	83	52	31	8,524	315.70	102.70	(6)	(25)	(2,387)	(9)	(46)	(4,309)
PINAL	43	166	81	85	14,395	334.77	86.72	6	27	1,819	(6)	(24)	(1,839)
DISTRICT VI													
COCHISE	10	38	18	20	3,574	357.40	94.05	(1)	(4)	(582)	(5)	(15)	(1,749)
GRAHAM	3	11	6	5	983	327.67	89.36	0	0	0	(11)	(37)	(3,686)
GREENLEE	1	3	2	1	347	347.00	115.67	0	0	0	1	3	347
SANTA CRUZ	2	8	2	6	669	334.50	83.63	(1)	(2)	(275)	(1)	(3)	(52)

1/EXCLUDES: PRIOR MONTH NET TOTALS OF: 58 CASES; 226 RECIPIENTS; \$18,861.  
GRANT DIVERSION TOTALS OF: 0 CASES; \$0.  
ZERO PAY TOTALS OF 0 CASES; 0 RECIPIENTS.

	CURRENT MO. CASES	CURRENT MO. RECIP.	CURRENT MO. DOLLARS	PRIOR MO. CASES	PRIOR MO. RECIP.	PRIOR MO. DOLLARS
PASQUAY/AQUI	10	43	4,021	1	5	50
WM APACHE	54	227	21,579	8	29	1,989
SALT RIVER	0	0	0	0	0	0
NAVAJO	0	0	0	0	0	0
HOPAI	0	0	0	0	0	0
<b>TOTAL</b>	<b>64</b>	<b>270</b>	<b>25,600</b>	<b>9</b>	<b>34</b>	<b>2,039</b>

CASES WITH GRANT UNDER \$100 (SEE TABLE 1C).

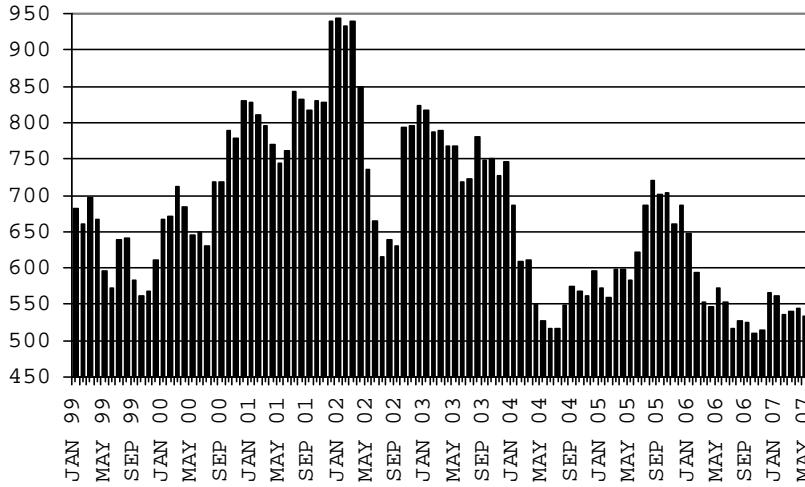
# CHART 1A

## CASH ASSISTANCE UNEMPLOYED PARENT PROGRAM

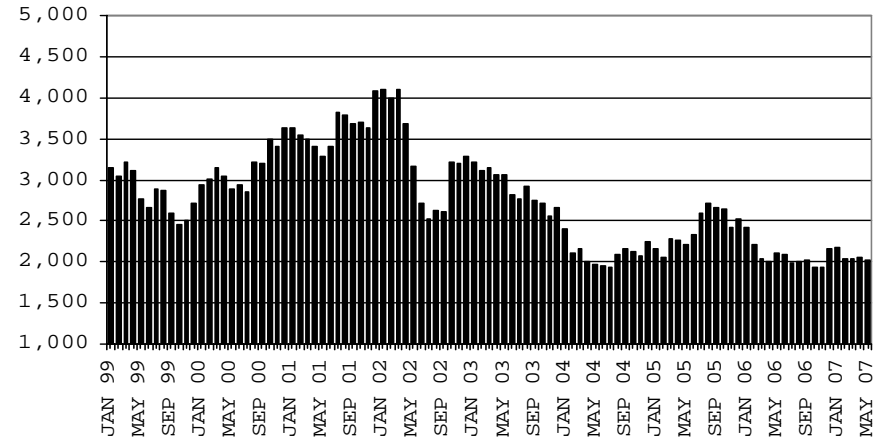
### COMPARISON OF CASES, RECIPIENTS, PAYMENTS & AVERAGE PAYMENTS

FOR 1999, 2000, 2001, 2002, 2003, 2004, 2005 & 2006

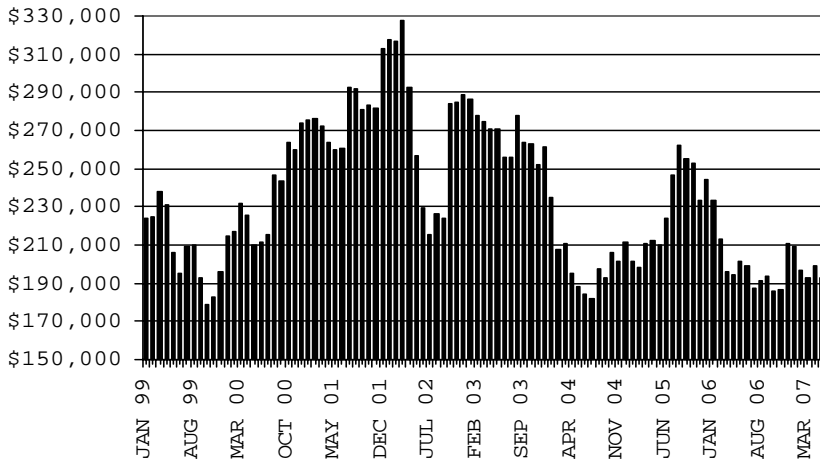
#### CASES



#### RECIPIENTS



#### PAYMENTS



#### AVERAGE PAYMENTS PER RECIPIENT

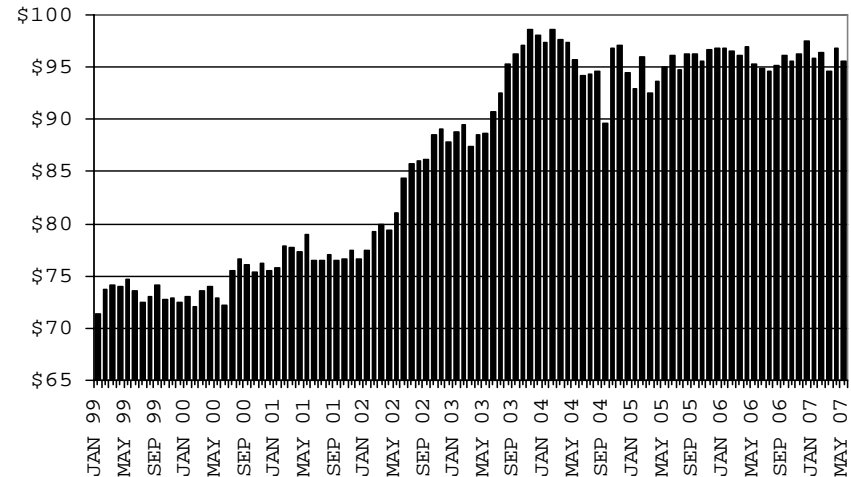


TABLE 1B 1/

CASH ASSISTANCE: ARIZONA  
CASES WITH GRANT UNDER \$100

	MAY 2007							CHANGE FROM			MAY 2006		
	FAMILIES (CASES)	PERSONS (RECIP.)	ADULTS	CHILDREN	TOTAL PAYMENTS	AVERAGE	AVERAGE	FAMILIES (CASES)	PERSONS (RECIP.)	TOTAL PAYMENTS	FAMILIES (CASES)	PERSONS (RECIP.)	TOTAL PAYMENTS
						PAYMENT/ CASE	PAYMENT/ RECIP.						
ARIZONA	714	1,472	407	1,065	52,575	73.63	35.72	54	93	5,683	(54)	(156)	(4,580)
DISTRICT I													
MARICOPA	396	838	215	623	28,790	72.70	34.36	32	74	3,240	30	84	1,087
DISTRICT II													
PIMA	131	264	78	186	9,806	74.85	37.14	20	30	2,025	(43)	(102)	(2,557)
DISTRICT III													
APACHE	9	18	5	13	590	65.56	32.78	1	2	197	0	0	67
COCONINO	8	17	6	11	427	53.38	25.12	2	7	46	(5)	(13)	(358)
NAVAJO	9	17	7	10	769	85.44	45.24	(3)	(5)	(100)	2	5	295
YAVAPAI	18	32	8	24	1,160	64.44	36.25	0	(1)	0	(1)	(15)	37
DISTRICT IV													
LA PAZ	1	1	0	1	104	104.00	104.00	(1)	(6)	12	(9)	(24)	(496)
MOHAVE	24	41	16	25	2,012	83.83	49.07	(1)	(3)	(342)	(19)	(51)	(1,101)
YUMA	25	54	14	40	1,859	74.36	34.43	3	7	258	(2)	(9)	(288)
DISTRICT V													
GILA	18	36	14	22	1,448	80.44	40.22	8	15	709	7	13	322
PINAL	38	82	23	59	3,220	84.74	39.27	(4)	(11)	(205)	3	4	290
DISTRICT VI													
COCHISE	22	48	13	35	1,439	65.41	29.98	(5)	(17)	(443)	(8)	(22)	(932)
GRAHAM	6	8	3	5	445	74.17	55.63	0	(2)	128	(4)	(8)	(249)
GREENLEE	1	2	0	2	37	37.00	18.50	0	1	(44)	0	(1)	(123)
SANTA CRUZ	8	14	5	9	469	58.63	33.50	2	2	202	(5)	(17)	(574)

EXCLUDES: PRIOR MONTH NET TOTALS OF 0 CASES; 0 RECIPIENTS; \$0.



# CHART 1B

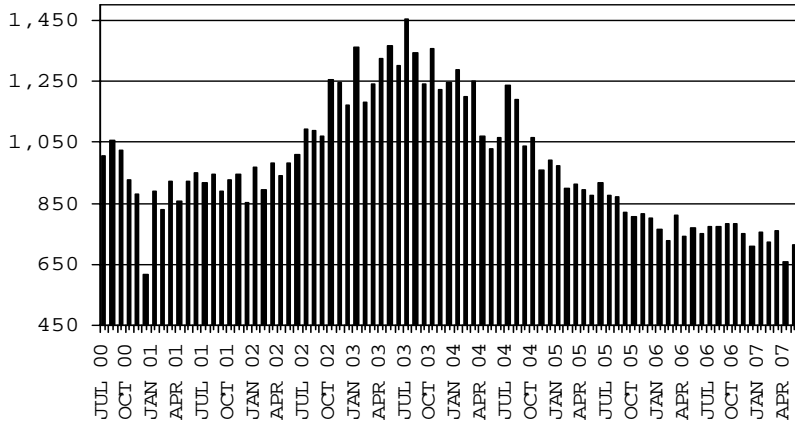
## CASH ASSISTANCE PROGRAM

### CASES WITH GRANT UNDER \$100

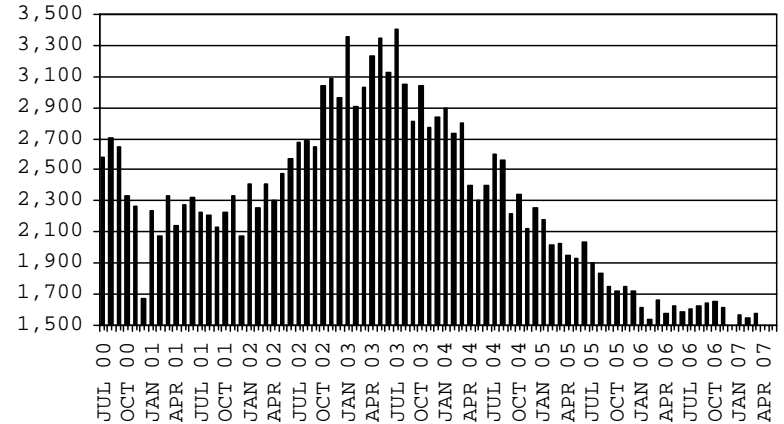
#### COMPARISON OF CASES, RECIPIENTS, PAYMENTS & AVERAGE PAYMENTS

FOR 2000, 2001, 2002, 2003, 2004, 2005 & 2006

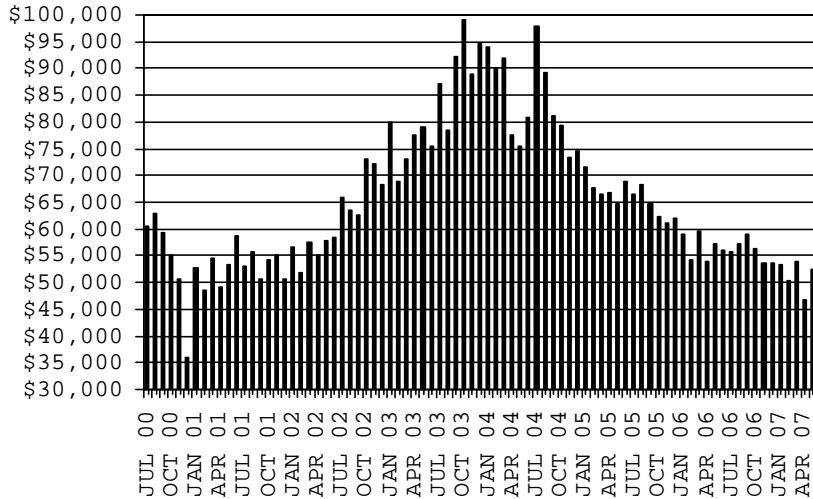
**CASES**



**RECIPIENTS**



**PAYMENTS**



**AVERAGE PAYMENTS PER RECIPIENT**

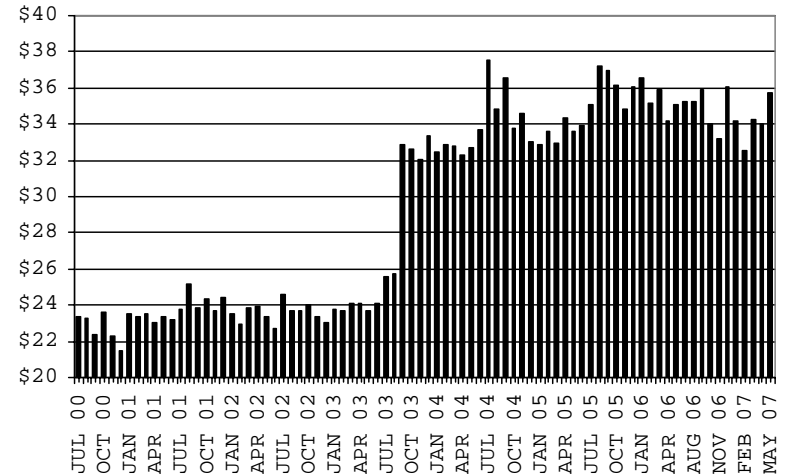


TABLE 1C 1/

CASH ASSISTANCE UNEMPLOYED PARENT PROGRAM: ARIZONA  
 CASES WITH GRANT UNDER \$100

	CHANGE FROM												
	MAY 2007							APRIL 2007			MAY 2006		
	FAMILIES (CASES)	PERSONS (RECIP.)	ADULTS	CHILDREN	TOTAL PAYMENTS	AVERAGE PAYMENT/ CASE	AVERAGE PAYMENT/ RECIP.	FAMILIES (CASES)	PERSONS (RECIP.)	TOTAL PAYMENTS	FAMILIES (CASES)	PERSONS (RECIP.)	TOTAL PAYMENTS
ARIZONA	8	25	11	14	496	62.00	19.84	1	(1)	125	2	7	136
DISTRICT I													
MARICOPA	3	10	4	6	176	58.67	17.60	2	4	132	1	5	59
DISTRICT II													
PIMA	4	12	5	7	222	55.50	18.50	0	0	12	4	12	222
DISTRICT III													
APACHE	1	3	2	1	98	98.00	32.67	0	(2)	39	0	(1)	13
COCONINO	0	0	0	0	0	0.00	0.00	0	0	0	0	0	0
NAVAJO	0	0	0	0	0	0.00	0.00	(1)	(5)	(59)	0	0	0
YAVAPAI	0	0	0	0	0	0.00	0.00	0	0	0	(1)	(4)	(85)
DISTRICT IV													
LA PAZ	0	0	0	0	0	0.00	0.00	0	0	0	0	0	0
MOHAVE	0	0	0	0	0	0.00	0.00	0	0	0	0	0	0
YUMA	0	0	0	0	0	0.00	0.00	0	0	0	0	0	0
DISTRICT V													
GILA	0	0	0	0	0	0.00	0.00	(1)	(3)	(58)	(1)	(3)	(40)
PINAL	0	0	0	0	0	0.00	0.00	(1)	(3)	(58)	0	0	0
DISTRICT VI													
COCHISE	0	0	0	0	0	0.00	0.00	0	0	0	(1)	(3)	(96)
GRAHAM	0	0	0	0	0	0.00	0.00	0	0	0	(1)	(3)	(22)
GREENLEE	0	0	0	0	0	0.00	0.00	0	0	0	0	0	0
SANTA CRUZ	0	0	0	0	0	0.00	0.00	0	0	0	0	0	0

EXCLUDES: PRIOR MONTH NET TOTALS OF 29 CASES; 102 RECIPIENTS; \$1,479.

7/20/2007

# CHART 1C

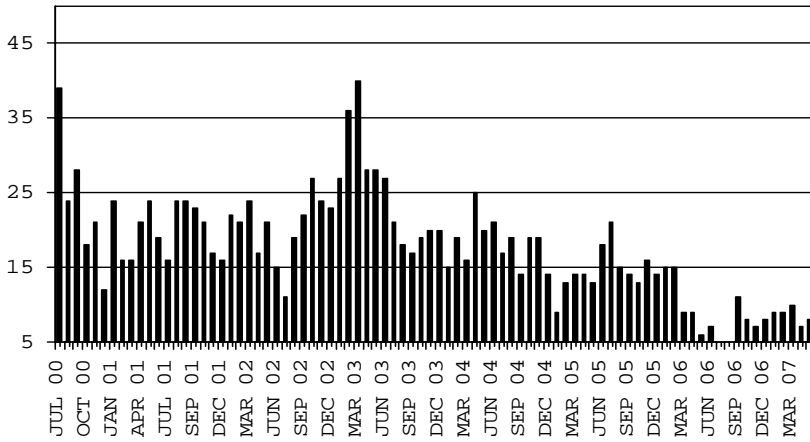
## CASH ASSISTANCE UNEMPLOYED PARENT PROGRAM

### CASES WITH GRANT UNDER \$100

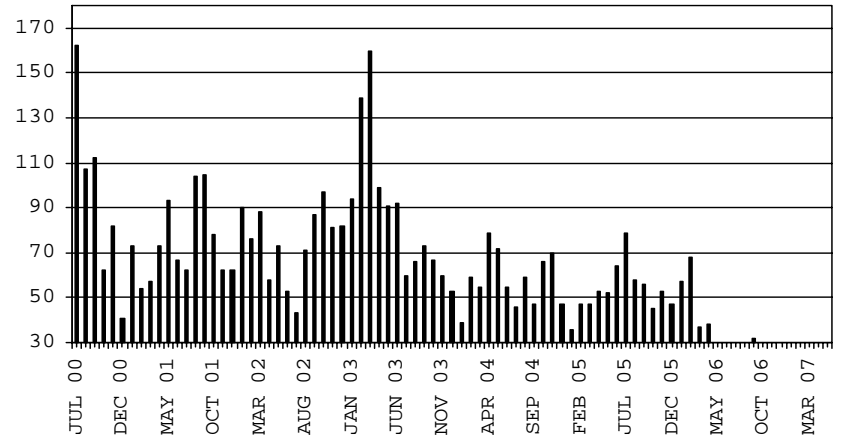
#### COMPARISON OF CASES, RECIPIENTS, PAYMENTS & AVERAGE PAYMENTS

FOR 2000, 2001, 2002, 2003, 2004, 2005 & 2006

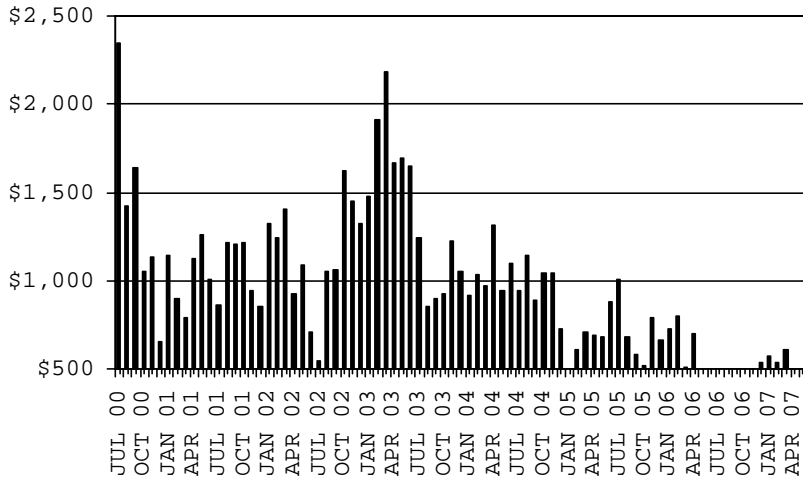
**CASES**



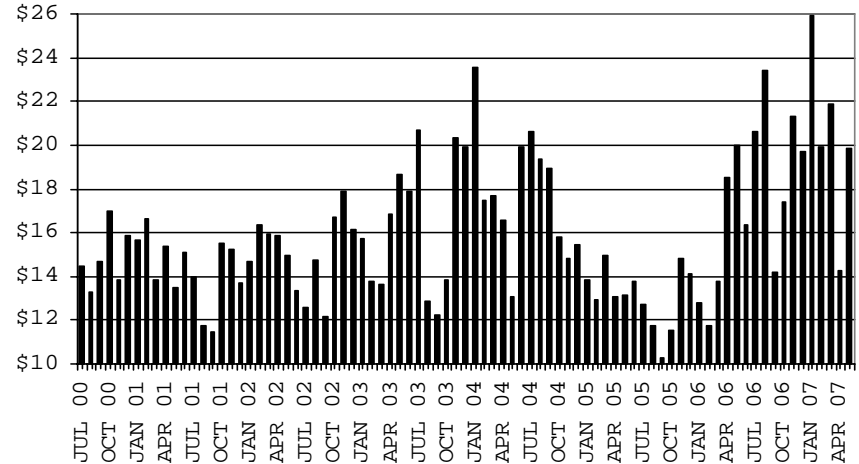
**RECIPIENTS**



**PAYMENTS**



**AVERAGE PAYMENTS PER RECIPIENT**



**TABLE 2**  
**GENERAL ASSISTANCE: ARIZONA 1,**

	CHANGE FROM										
	MAY 2007					APRIL 2007			MAY 2006		
	NUMBER OF CASES	PERSONS (RECIP.)	TOTAL PAYMENTS	AVERAGE PAYMENT/ CASE	AVERAGE PAYMENT/ RECIP.	NUMBER OF CASES	PERSONS (RECIP.)	TOTAL PAYMENTS	NUMBER OF CASES	PERSONS (RECIP.)	TOTAL PAYMENTS
ARIZONA	1,269	1,276	193,429	152.43	151.59	(45)	(47)	(6,292)	132	131	27,277
DISTRICT I											
MARICOPA	509	510	78,246	153.72	153.42	(25)	(26)	(3,498)	53	52	9,047
DISTRICT II											
PIMA	334	335	49,727	148.88	148.44	(13)	(13)	(2,054)	70	70	9,577
DISTRICT III											
APACHE	13	15	1,981	152.38	132.07	(5)	(5)	(761)	3	4	474
COCONINO	21	22	3,223	153.48	146.50	4	4	581	(4)	(3)	(376)
NAVAJO	27	28	4,406	163.19	157.36	(1)	(1)	(173)	3	3	665
YAVAPAI	67	67	10,495	156.64	156.64	4	4	662	16	15	10,198
DISTRICT IV											
LA PAZ	9	9	1,362	151.33	151.33	0	(1)	(125)	(1)	(1)	(303)
MOHAVE	77	77	12,190	158.31	158.31	(5)	(5)	(475)	(8)	(8)	(195)
YUMA	46	47	6,456	140.35	137.36	1	1	77	5	6	143
DISTRICT V											
GILA	109	109	16,502	151.39	151.39	(4)	(4)	(197)	16	15	2,040
PINAL	22	22	3,070	139.55	139.55	(5)	(5)	(565)	(1)	(1)	(627)
PINAL	87	87	13,432	154.39	154.39	1	1	368	17	16	2,667
DISTRICT VI											
COCHISE	57	57	8,841	155.11	155.11	(1)	(1)	(329)	(21)	(22)	(3,993)
GRAHAM	43	43	6,549	152.30	152.30	0	0	(221)	(17)	(18)	(3,301)
GREENLEE	11	11	1,838	167.09	167.09	(2)	(2)	(281)	0	0	0
SANTA CRUZ	0	0	0	0.00	0.00	0	0	0	(1)	(1)	(173)
SANTA CRUZ	3	3	454	151.33	151.33	1	1	173	(3)	(3)	(519)

1/EXCLUDES: PRIOR MONTH NET TOTALS OF : 199 CASES; 199 RECIPIENTS; \$41,900.  
REFUGEE RESETTLEMENT PROGRAM: 97 CASES; 187 RECIPIENTS; \$27,572.

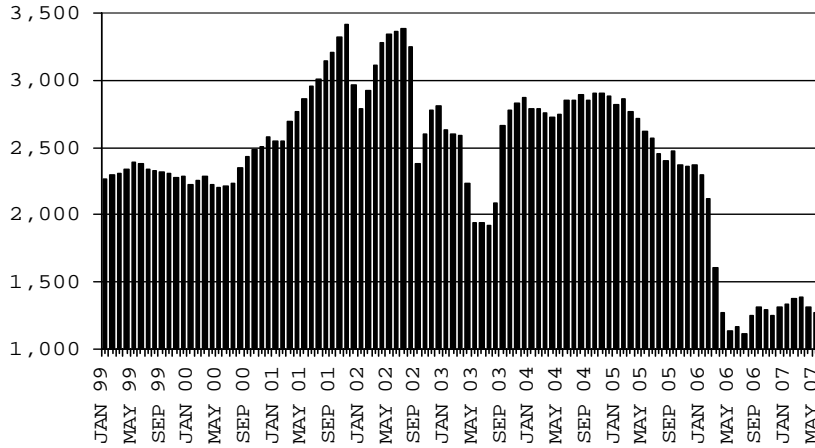
# CHART 2

## GENERAL ASSISTANCE PROGRAM

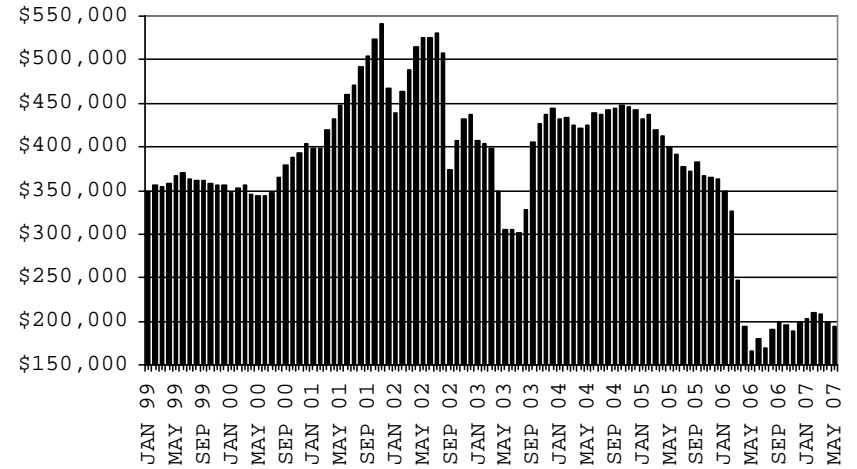
### COMPARISON OF CASES, PAYMENTS & AVERAGE PAYMENTS

FOR 1999, 2000, 2001, 2002, 2003, 2004, 2005 & 2006

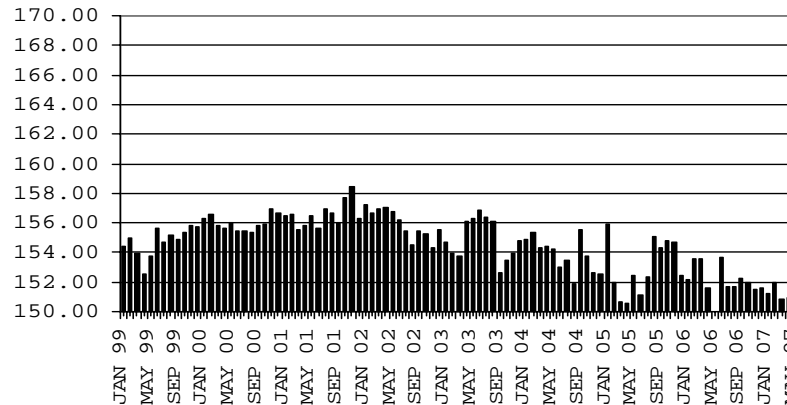
#### CASES



#### PAYMENTS



#### AVERAGE PAYMENT PER CASE



**TABLE 4**

**TUBERCULOSIS CONTROL: ARIZONA 1/**

	MAY 2007						CHANGE FROM					
							APRIL 2007			MAY 2006		
	NUMBER OF CASES	PERSONS (RECIP.)	TOTAL PAYMENTS	AVERAGE PAYMENT/ CASE	AVERAGE PAYMENT/ RECIP.		NUMBER OF CASES	PERSONS (RECIP.)	TOTAL PAYMENTS	NUMBER OF CASES	PERSONS (RECIP.)	TOTAL PAYMENTS
ARIZONA	12	12	1,394	116.17	116.17		(3)	(3)	(363)	(10)	(10)	(1,309)
DISTRICT I												
MARICOPA	12	12	1,394	116.17	116.17		(3)	(3)	(363)	(8)	(8)	(1,058)
DISTRICT II												
PIMA	0	0	0	0.00	0.00		0	0	0	(2)	(2)	(251)
DISTRICT III	0	0	0	0.00	0.00		0	0	0	0	0	0
APACHE	0	0	0	0.00	0.00		0	0	0	0	0	0
COCONINO	0	0	0	0.00	0.00		0	0	0	0	0	0
NAVAJO	0	0	0	0.00	0.00		0	0	0	0	0	0
YAVAPAI	0	0	0	0.00	0.00		0	0	0	0	0	0
DISTRICT IV	0	0	0	0.00	0.00		0	0	0	0	0	0
LA PAZ	0	0	0	0.00	0.00		0	0	0	0	0	0
MOHAVE	0	0	0	0.00	0.00		0	0	0	0	0	0
YUMA	0	0	0	0.00	0.00		0	0	0	0	0	0
DISTRICT V	0	0	0	0.00	0.00		0	0	0	0	0	0
GILA	0	0	0	0.00	0.00		0	0	0	0	0	0
PINAL	0	0	0	0.00	0.00		0	0	0	0	0	0
DISTRICT VI	0	0	0	0.00	0.00		0	0	0	0	0	0
COCHISE	0	0	0	0.00	0.00		0	0	0	0	0	0
GRAHAM	0	0	0	0.00	0.00		0	0	0	0	0	0
GREENLEE	0	0	0	0.00	0.00		0	0	0	0	0	0
SANTA CRUZ	0	0	0	0.00	0.00		0	0	0	0	0	0

1/EXCLUDES: PRIOR MONTH NET TOTALS OF : 0 CASES; 0 RECIPIENTS; \$0.

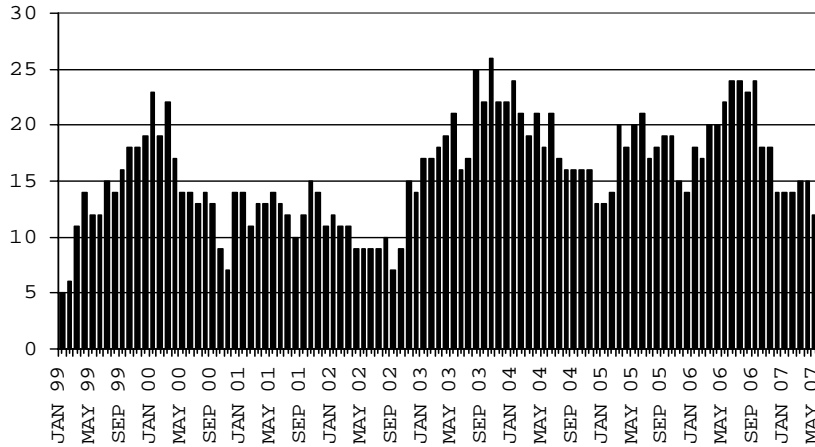
# CHART 4

## TUBERCULOSIS CONTROL PROGRAM

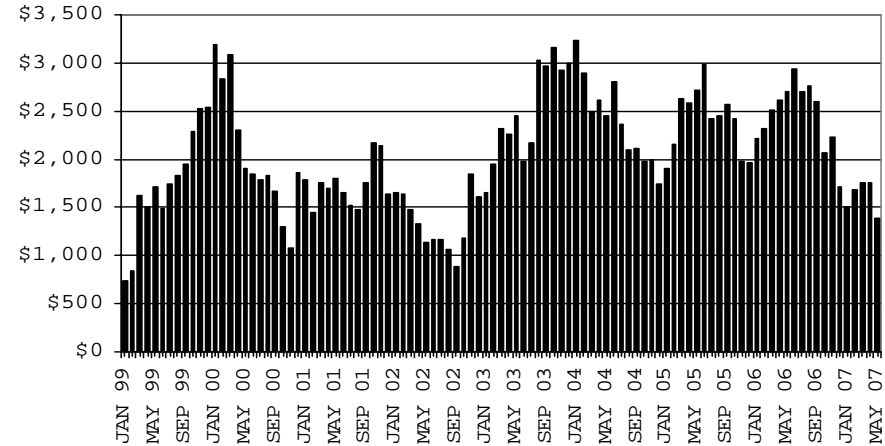
### COMPARISON OF CASES, PAYMENTS & AVERAGE PAYMENTS

FOR 1999, 2000, 2001, 2002, 2003, 2004, 2005 & 2006

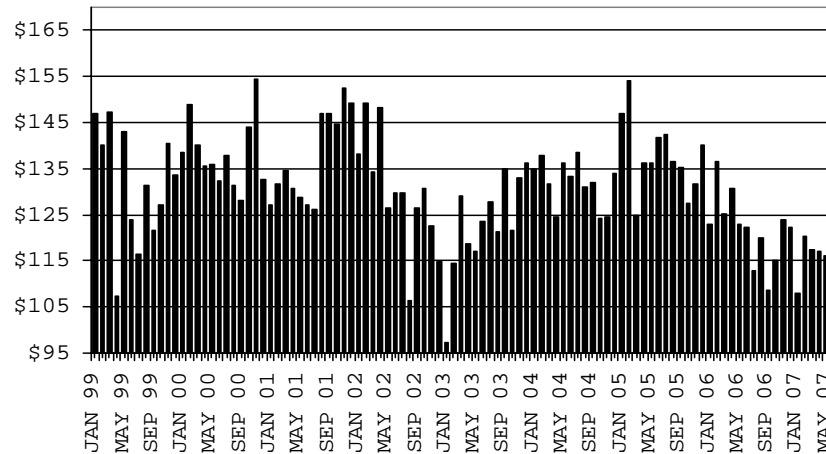
**CASES**



**PAYMENTS**



**AVERAGE PAYMENT PER CASE**



**TABLE 5**

**SUPPLEMENTAL PAYMENTS PROGRAM: ARIZONA 1,  
 BASED ON HB 2535 SPP IS SUSPENDED FROM JULY, 2003 THROUGH JUNE, 2004  
 CHANGE FROM**

	MAY 2007			APRIL 2007		MAY 2006	
	NUMBER OF PAYMENTS	TOTAL PAYMENTS	AVERAGE PAYMENT	NUMBER OF PAYMENTS	TOTAL PAYMENTS	NUMBER OF PAYMENTS	TOTAL PAYMENTS
ARIZONA	0	0	0	0	0	0	0
DISTRICT I							
MARICOPA	0	0	0	0	0	0	0
DISTRICT II							
PIMA	0	0	0	0	0	0	0
DISTRICT III							
APACHE	0	0	0	0	0	0	0
COCONINO	0	0	0	0	0	0	0
NAVAJO	0	0	0	0	0	0	0
YAVAPAI	0	0	0	0	0	0	0
DISTRICT IV							
LA PAZ	0	0	0	0	0	0	0
MOHAVE	0	0	0	0	0	0	0
YUMA	0	0	0	0	0	0	0
DISTRICT V							
GILA	0	0	0	0	0	0	0
PINAL	0	0	0	0	0	0	0
DISTRICT VI							
COCHISE	0	0	0	0	0	0	0
GRAHAM	0	0	0	0	0	0	0
GREENLEE	0	0	0	0	0	0	0
SANTA CRUZ	0	0	0	0	0	0	0

1/EXCLUDES: PRIOR MONTH NET TOTALS OF : 0 CASES (PERSONS); \$0.  
 1/TABLE 5 IS BASED ON THE LOCATION OF THE OFFICE THAT PROCEEDS THE APPLICATION.



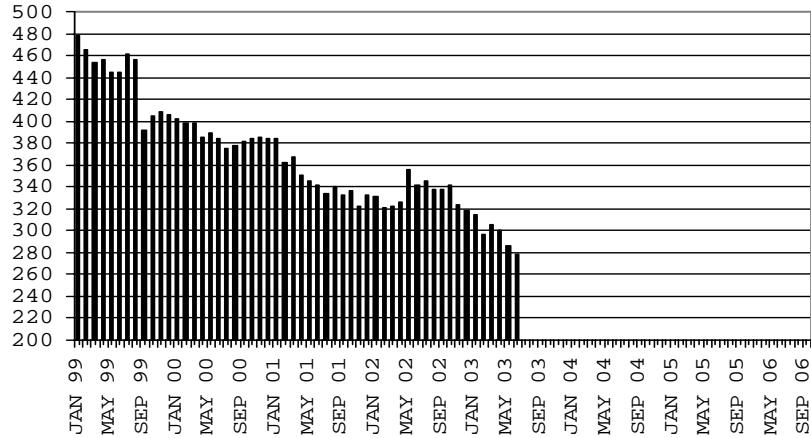
# CHART 5

## SUPPLEMENTAL PAYMENTS PROGRAM

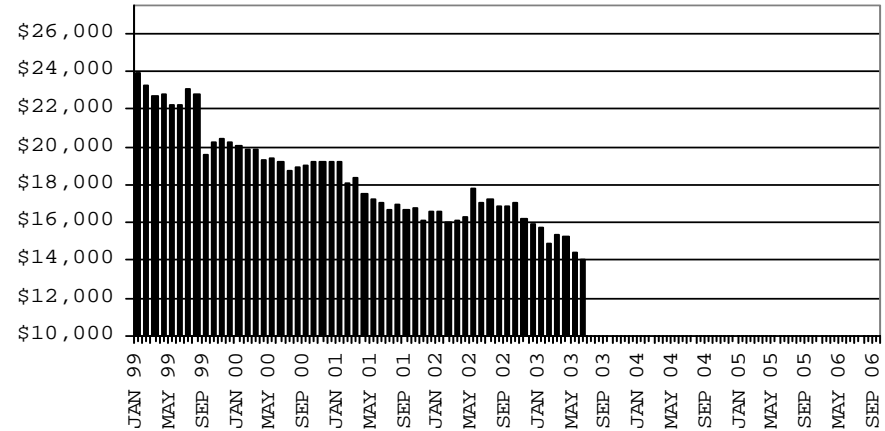
### COMPARISON OF CASES, PAYMENTS & AVERAGE PAYMENTS

FOR 1999, 2000, 2001, 2002, 2003, 2004, 2005 & 2006

**CASES**



**PAYMENTS**



**AVERAGE PAYMENT PER CASE**

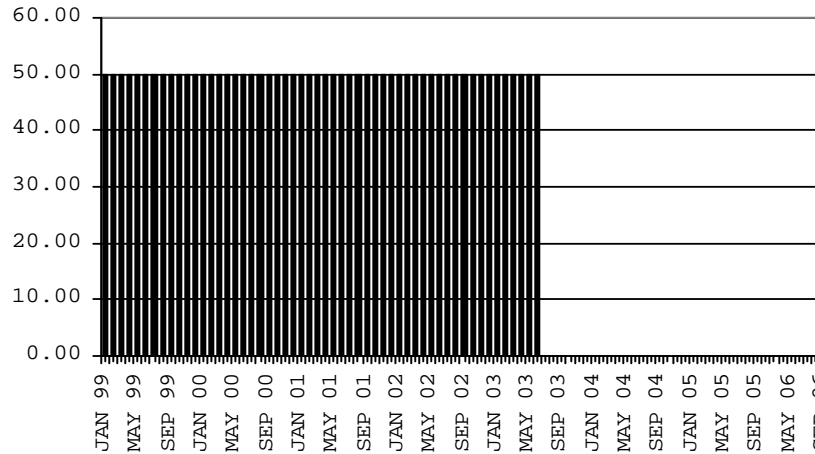


TABLE 6

FOOD STAMP PROGRAM: ARIZONA 1/

	CHANGE FROM											
	MAY 2007					APRIL 2007			MAY 2006			
	HOUSEHOLDS	PERSONS	TOTAL COUPON ISSUANCE	AVERAGE ALLOT./ HOUSEHOLD	AVERAGE ALLOT./ PERSON	HOUSEHOLDS	PERSONS	TOTAL COUPON ISSUANCE	HOUSEHOLDS	PERSONS	TOTAL COUPON ISSUANCE	
ARIZONA	220,975	541,262	52,659,058	238.30	97.29	2,358	5,618	433,073	4,073	9,718	2,089,788	
DISTRICT I												
MARICOPA	109,497	268,002	26,634,029	243.24	99.38	993	2,010	125,401	1,273	5,481	1,077,038	
DISTRICT II												
PIMA	39,406	91,076	8,857,281	224.77	97.25	430	936	83,288	1,060	1,807	327,260	
DISTRICT III												
APACHE	6,006	18,740	1,706,456	284.13	91.06	(117)	(366)	(51,921)	(44)	(357)	13,859	
COCONINO	5,035	15,043	1,380,530	274.19	91.77	(11)	(30)	3,570	(55)	(534)	(5,199)	
NAVAJO	8,983	25,152	2,350,412	261.65	93.45	126	392	18,505	301	216	101,445	
YAVAPAI	6,154	12,360	1,202,015	195.32	97.25	69	80	13,137	39	(69)	50,246	
DISTRICT IV												
LA PAZ	1,241	2,750	273,743	220.58	99.54	(8)	(34)	(6,639)	84	154	14,482	
MOHAVE	9,919	21,112	2,104,953	212.21	99.70	86	238	26,692	392	1,071	158,150	
YUMA	9,315	25,337	2,283,330	245.12	90.12	558	1,911	191,347	262	408	43,973	
DISTRICT V												
GILA	14,266	35,324	3,458,709	242.44	97.91	176	387	28,270	932	2,438	305,340	
PINAL	3,234	7,677	752,751	232.76	98.05	(1)	19	(2,021)	(53)	(196)	(12,715)	
	11,032	27,647	2,705,958	245.28	97.88	177	368	30,291	985	2,634	318,055	
DISTRICT VI												
COCHISE	11,153	26,366	2,407,600	215.87	91.31	56	94	1,423	(171)	(897)	3,194	
GRAHAM	6,470	14,585	1,358,897	210.03	93.17	32	9	(2,619)	(8)	(316)	5,901	
GREENLEE	2,034	4,830	444,851	218.71	92.10	17	17	(1,651)	(172)	(564)	(32,432)	
SANTA CRUZ	263	570	53,998	205.32	94.73	3	15	1,441	(53)	(126)	(7,338)	
	2,386	6,381	549,854	230.45	86.17	4	53	4,252	62	109	37,063	

1/EXCLUDES: PRIOR MONTH NET TOTALS OF : 8,464 CASES; 23,005 RECIPIENTS; \$1,168,745.  
 AGED CANCELATIONS: 0 CASES; 0 RECIPIENTS; 0.  
 FS COUPON CONVERSIONS: 0 CASES; 0 RECIPIENTS; \$0.  
 FS REINSTATED: 0 CASES; \$0.  
 FS ZERO PAY: 0 CASES; 0 RECIPIENTS.

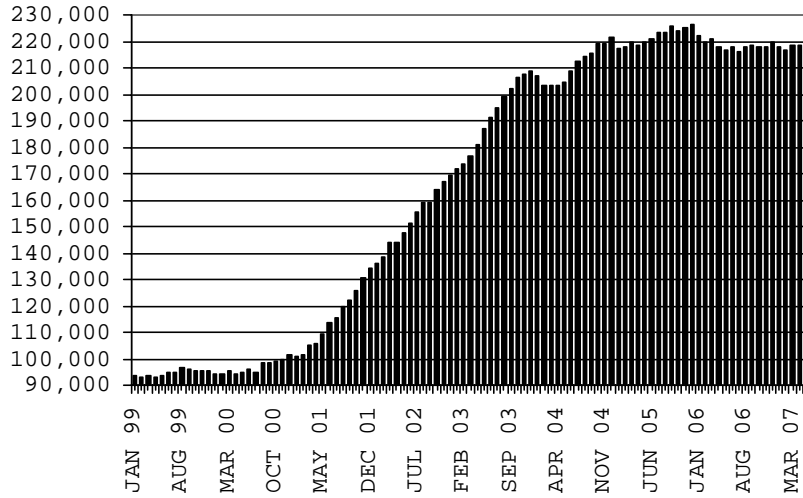
# CHART 6

## FOOD STAMPS PROGRAM

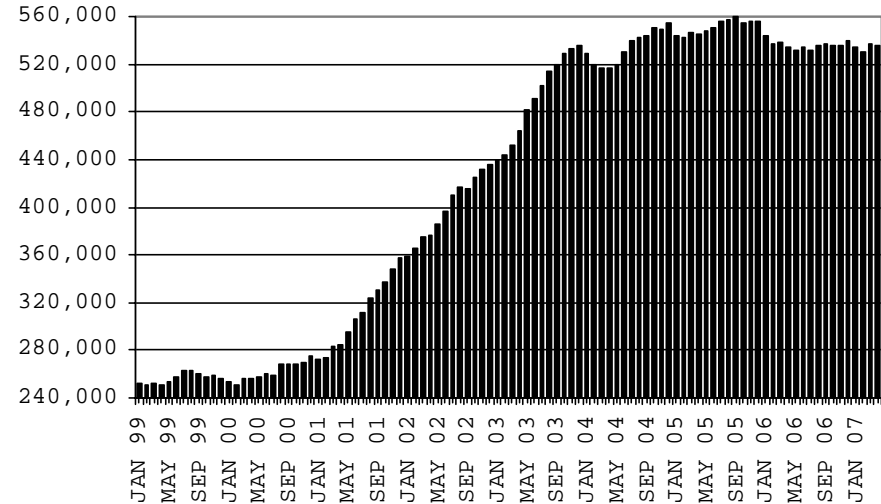
### COMPARISON OF HOUSEHOLDS, RECIPIENTS, PAYMENTS & AVERAGE PAYMENTS

FOR 1999, 2000, 2001, 2002, 2003, 2004, 2005 & 2006

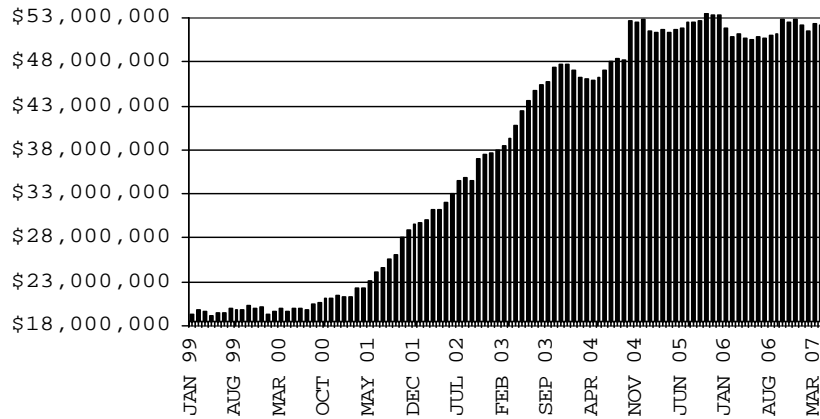
#### HOUSEHOLDS



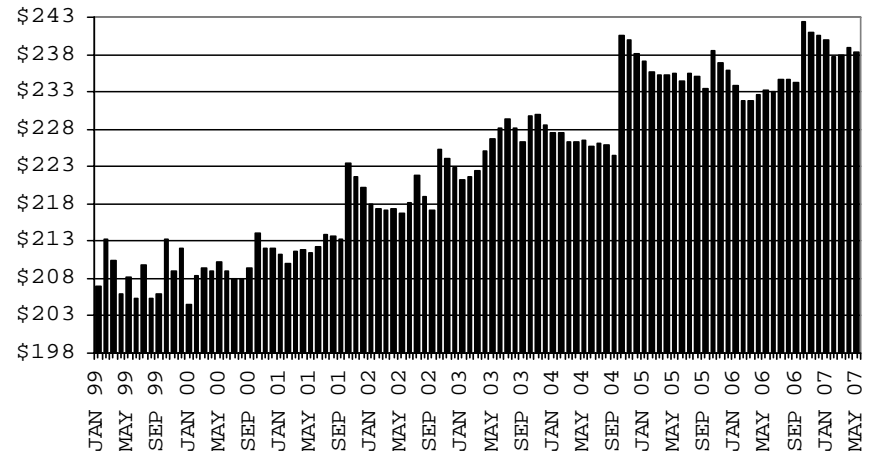
#### RECIPIENTS



#### TOTAL PAYMENTS



#### AVERAGE PAYMENT PER HOUSEHOLD



**TABLE 7A**  
**MEDICAL ASSISTANCE PROGRAM**  
**RECIPIENTS**

**MAY 2007**

	SOBRA WOMAN 133% FPL	SOBRA CHILD	ADULT W/O CHILD 100% FPL	FOSTER CARE	1931 36% FPL	FEDERAL EMERGENCY SERVICES	INFANTS	ADULT W/O CHILD 40% FPL	MEDICAL W/SPEND DOWN	SOBRA WOMAN 100% FPL	SOBRA CHILD 100% FPL	TRANSITIONAL MEDICAL T1 - T4	1931 100% FPL	YATI	OTHER	TOTAL CASES
ARIZONA	11,321	58,522	35,861	8,923	246,885	84,439	49,238	79,616	5,211	3,388	152,978	44,348	72,804	227	20,271	874,032
DISTRICT I																
MARICOPA	5,825	32,116	15,191	4,480	126,779	64,739	29,655	34,128	2,940	1,683	83,797	21,499	33,258	118	9,943	466,151
DISTRICT II																
PIMA	1,703	8,982	7,053	2,491	38,601	10,496	6,852	14,351	607	550	24,389	7,304	13,239	67	3,621	140,306
DISTRICT III																
APACHE	259	1,335	932	40	10,247	105	951	4,002	56	84	3,866	1,222	2,345	0	335	25,779
COCONINO	405	1,340	1,127	117	7,027	536	1,137	2,768	103	91	3,506	1,318	2,072	8	331	21,886
NAVAJO	356	2,101	1,337	106	10,827	330	1,310	4,437	198	131	4,337	1,375	2,746	3	499	30,093
YAVAPAI	441	1,776	1,628	374	5,222	1,600	1,401	2,480	286	111	3,818	1,308	2,282	11	848	23,586
DISTRICT IV																
LA PAZ	45	222	203	18	1,164	186	170	533	29	17	643	184	336	0	133	3,883
MOHAVE	470	2,081	1,804	224	8,836	944	1,582	3,905	306	149	5,950	1,538	3,448	1	1,060	32,298
YUMA	555	2,329	2,123	255	10,204	2,218	1,863	3,012	224	177	7,604	3,312	4,565	3	1,080	39,524
DISTRICT V																
GILA	140	773	510	81	3,732	150	463	1,790	71	42	1,589	556	940	3	244	11,084
PINAL	614	3,385	1,621	397	13,153	1,826	2,162	4,514	197	185	6,452	2,247	3,363	7	1,013	41,136
DISTRICT VI																
COCHISE	250	1,075	1,253	239	6,087	701	849	2,160	103	80	3,481	1,210	2,099	4	664	20,255
GRAHAM	134	405	372	59	2,084	55	362	785	28	39	1,075	565	639	2	117	6,721
GREENLEE	26	38	42	11	311	6	54	105	7	4	141	52	84	0	25	906
SANTA CRUZ	98	564	665	31	2,611	547	427	646	56	45	2,330	658	1,388	0	358	10,424

**TABLE 7C**  
**MEDICAL ASSISTANCE PROGRAM**  
**RECIPIENTS**

**CHANGE FROM**

MAY 2006

	SOBRA WOMAN 133% FPL	SOBRA CHILD	ADULT W/O CHILD 100% FPL	FOSTER CARE	1931 36% FPL	FEDERAL EMERGENCY SERVICES	INFANTS	ADULT W/O CHILD 40% FPL	MEDICAL W/SPEND DOWN	SOBRA WOMAN 100% FPL	SOBRA CHILD 100% FPL	TRANSITIONAL MEDICAL T1 - T4	3E 1931 100% FPL	YATI	OTHER	TOTAL CASES
ARIZONA	290	1,265	(1,695)	336	(10,005)	988	434	(4,957)	(554)	219	5,069	(656)	(420)	50	1,484	(8,152)
DISTRICT I																
MARICOPA	56	939	(794)	139	(5,336)	1,662	(387)	(3,985)	(342)	157	3,131	(46)	(380)	20	636	(4,530)
DISTRICT II																
PIMA	2	(62)	(228)	114	(1,256)	103	313	(639)	(139)	(1)	819	(220)	41	10	246	(897)
DISTRICT III																
APACHE	5	(28)	45	(2)	(638)	(15)	(26)	46	2	(21)	71	202	34	0	51	(274)
COCONINO	35	14	(108)	8	(454)	(81)	(33)	(139)	(35)	(8)	(286)	16	(136)	3	35	(1,169)
NAVAJO	25	83	(12)	(23)	(461)	27	44	226	(27)	34	63	(35)	(21)	3	80	6
YAVAPAI	(17)	5	(55)	6	(160)	43	50	(108)	38	12	12	(411)	(57)	4	57	(581)
DISTRICT IV																
LA PAZ	10	(5)	(28)	(1)	(34)	(20)	(12)	(27)	8	5	64	41	13	0	24	38
MOHAVE	(41)	54	(87)	(2)	(458)	(90)	134	(287)	(48)	(14)	300	(322)	35	0	51	(775)
YUMA	49	(80)	(60)	48	(1,149)	(416)	11	(73)	65	(6)	345	465	179	(1)	139	(484)
DISTRICT V																
GILA	18	(20)	(11)	6	(314)	(10)	3	(24)	(25)	6	135	(26)	(33)	1	(11)	(305)
PINAL	114	499	(82)	60	535	(14)	269	273	(49)	53	581	85	8	5	78	2,415
DISTRICT VI																
COCHISE	11	(93)	(158)	(11)	(200)	(131)	14	(60)	(11)	(2)	(28)	(92)	(71)	3	55	(774)
GRAHAM	19	(6)	(46)	(8)	(190)	(36)	51	(126)	(15)	2	(44)	(45)	(93)	2	(4)	(539)
GREENLEE	5	(11)	(3)	1	(62)	(2)	7	(55)	5	1	(43)	(25)	3	0	(1)	(180)
SANTA CRUZ	(1)	(24)	(68)	1	172	(32)	(4)	21	19	1	(51)	(243)	58	0	48	(103)

**TABLE 7B**

**MEDICAL ASSISTANCE PROGRAM**

**RECIPIENTS**

**CHANGE FROM**

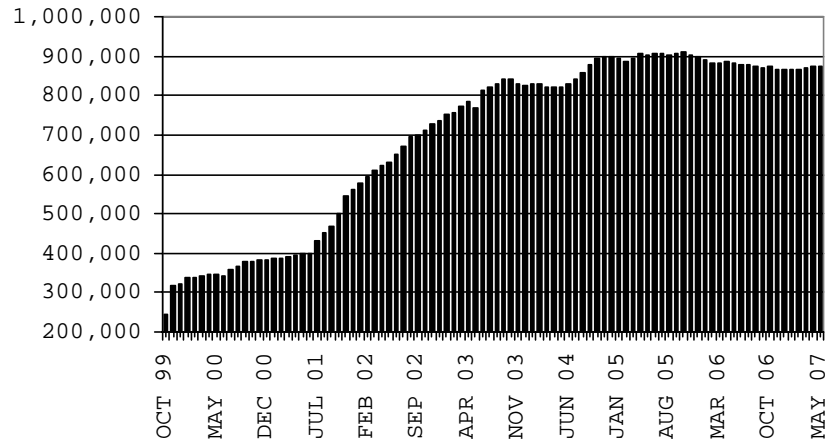
**APRIL 2007**

	SOBRA WOMAN 133% FPL	SOBRA CHILD	ADULT W/O CHILD 100% FPL	FOSTER CARE	1931 36% FPL	FEDERAL EMERGENCY SERVICES	INFANTS	ADULT W/O CHILD 40% FPL	MEDICAL W/SPEND DOWN	SOBRA WOMAN 100% FPL	SOBRA CHILD 100% FPL	TRANSITIONAL MEDICAL T1 - T4	1931 100% FPL	YATI	OTHER	TOTAL CASES
ARIZONA	108	(181)	(124)	74	(1,284)	397	(109)	355	(12)	66	1,424	(31)	726	1	229	1,639
DISTRICT I																
MARICOPA	115	(47)	81	35	(875)	434	5	220	28	51	750	366	200	0	83	1,446
DISTRICT II																
PIMA	0	(53)	(57)	(1)	(199)	(4)	(21)	99	(53)	11	142	62	143	(1)	25	93
DISTRICT III	(14)	(151)	(73)	31	(585)	3	(52)	(131)	38	(2)	44	193	28	0	54	(617)
APACHE	(6)	(46)	(6)	2	(215)	4	(24)	(106)	0	(5)	(8)	96	20	0	16	(278)
COCONINO	(13)	(12)	(29)	1	(64)	(8)	(17)	(22)	(9)	7	(86)	83	(49)	0	9	(209)
NAVAJO	3	(72)	(37)	4	(259)	(4)	(1)	(14)	19	0	80	92	5	0	17	(167)
YAVAPAI	2	(21)	(1)	24	(47)	11	(10)	11	28	(4)	58	(78)	52	0	12	37
DISTRICT IV	13	27	18	3	499	14	(56)	96	(2)	16	382	(653)	266	0	63	686
LA PAZ	(4)	(9)	(14)	1	(72)	(2)	0	(13)	0	3	16	24	(8)	0	1	(77)
MOHAVE	(4)	29	(18)	0	10	(24)	(1)	9	5	6	104	(82)	56	0	41	131
YUMA	21	7	50	2	561	40	(55)	100	(7)	7	262	(595)	218	0	21	632
DISTRICT V	0	70	(38)	7	(99)	(26)	25	73	(24)	11	65	34	26	2	1	127
GILA	9	(11)	(18)	0	(136)	(11)	(9)	18	(7)	(5)	45	17	19	0	6	(83)
PINAL	(9)	81	(20)	7	37	(15)	34	55	(17)	16	20	17	7	2	(5)	210
DISTRICT VI	(6)	(27)	(55)	(1)	(25)	(24)	(10)	(2)	1	(21)	41	(33)	63	0	3	(96)
COCHISE	(4)	(40)	(16)	1	0	(2)	(13)	(12)	(4)	(12)	(1)	(10)	(1)	0	(6)	(120)
GRAHAM	(6)	3	(16)	(2)	(4)	0	(4)	6	(2)	(1)	19	(8)	16	0	7	8
GREENLEE	5	3	(7)	0	(10)	(1)	(1)	(1)	2	(1)	(6)	(9)	11	0	0	(15)
SANTA CRUZ	(1)	7	(16)	0	(11)	(21)	8	5	5	(7)	29	(6)	37	0	2	31

# CHART 7

## MEDICAL ASSISTANCE PROGRAM COMPARISON OF RECIPIENTS FOR 1999, 2000, 2001, 2002, 2003, 2004, 2005 & 2006

### TOTAL RECIPIENTS



**NEW SERIES WHICH INCLUDES 1931**