

\*\*\*\* STATISTICAL BULLETIN \*\*\*\*  
ARIZONA DEPARTMENT OF ECONOMIC SECURITY  
FAMILY ASSISTANCE ADMINISTRATION  
BOX 6123, PHOENIX, ARIZONA 85005  
PHONE (602) 542-3678

JULY 2007

THIS ISSUE OF THE STATISTICAL BULLETIN COMPARES JULY 2007 DATA FOR EACH OF THE INDICATED PROGRAMS WITH THE INFORMATION FOR JUNE 2007 AND JULY 2006. STATEWIDE SUMMARIES OF ACTIVITY WITHIN EACH OF THE SPECIFIC PROGRAMS FOR THIS REPORT PERIOD ARE DISCUSSED BELOW. THE TABLES COMPARE CURRENT AND PRIOR MONTH DATA. DISTRICT AND COUNTY COMPARISONS ARE PROVIDED WITHIN THIS BULLETIN

CASH ASSISTANCE (CA)

COMPARING TO JUNE 2007, JULY 2007 CASES INCREASED BY 52 (0.15%) TO 34,842. RECIPIENTS INCREASED BY 139 (0.19%) TO 74,681. PAYMENTS INCREASED BY \$21,957 (0.24%) TO \$9,303,480. AVERAGE PAYMENT PER CASE INCREASED BY \$0.23 (0.09%) TO \$267.02. PAYMENT PER RECIPIENT INCREASED BY \$0.07 (0.06%) TO \$124.58.

COMPARING TO JULY 2006, JULY 2007 CASES DECREASED BY 2,566 (6.86%). RECIPIENTS DECREASED BY 7,369 (8.98%). TOTAL PAYMENTS DECREASED BY \$835,971 (8.24%). THE AVERAGE PAYMENT PER CASE DECREASED BY \$4.03 (1.49%). THE AVERAGE PAYMENT PER RECIPIENT INCREASED BY \$1.00 (0.88%).

CASH ASSISTANCE UNEMPLOYED PARENT PROGRAM (CA-UP)

COMPARING TO JUNE 2007, JULY 2007 CASES INCREASED BY 25 (4.61%) TO 567. RECIPIENTS INCREASED BY 141 (6.97%) TO 2,164. PAYMENTS INCREASED BY \$12,098 (6.26%) TO \$205,364. AVERAGE PAYMENT PER CASE INCREASED BY \$5.61 (1.57%) TO \$362.19. PAYMENT PER RECIPIENT DECREASED BY \$0.63 (0.66%) TO \$94.90.

COMPARING TO JULY 2006, JULY 2007 CASES INCREASED BY 51 (9.88%). RECIPIENTS INCREASED BY 182 (9.18%). TOTAL PAYMENTS INCREASED BY \$17,957 (9.58%). THE AVERAGE PAYMENT PER CASE DECREASED BY \$1.01 (0.28%). THE AVERAGE PAYMENT PER RECIPIENT INCREASED BY \$0.35 (0.37%).

CASH ASSISTANCE WITH GRANT UNDER \$100 (CA-MOE)

COMPARING TO JUNE 2007, JULY 2007 CASES INCREASED BY 4 (0.57%) TO 700. RECIPIENTS INCREASED BY 2 (0.14%) TO 1,421. PAYMENTS INCREASED BY \$2,032 (4.14%) TO \$51,105. AVERAGE PAYMENT PER CASE INCREASED BY \$2.50 (3.55%) TO \$73.01. AVERAGE PAYMENT PER RECIPIENT INCREASED BY \$1.38 (3.99%) TO \$35.96.

COMPARING TO JULY 2006, JULY 2007 CASES DECREASED BY 74 (9.56%). RECIPIENTS DECREASED BY 189 (11.74%). TOTAL PAYMENTS DECREASED BY \$4,588 (8.24%). THE AVERAGE PAYMENT PER CASE INCREASED BY \$1.06 (1.47%). THE AVERAGE PAYMENT PER RECIPIENT INCREASED BY \$1.37 (3.96%).

CASH ASSISTANCE UNEMPLOYED PARENT PROGRAM WITH GRANT UNDER \$100 (CA-UP-MOE) NEW PROGRAM STARTING 7/01

COMPARING TO JUNE 2007, JULY 2007 CASES INCREASED BY 1 (7.14%) TO 15. RECIPIENTS INCREASED BY 6 (13.95%) TO 49. PAYMENTS INCREASED BY \$29 (3.39%) TO \$884. AVERAGE PAYMENT PER CASE DECREASED BY \$2.14 (3.50%) TO \$58.93. PAYMENT PER RECIPIENT DECREASED BY \$1.84 (9.26%) TO \$18.04.

COMPARING TO JULY 2006, JULY 2007 CASES INCREASED BY 10 (200.00%). RECIPIENTS INCREASED BY 32 (3.74%). TOTAL PAYMENTS INCREASED BY \$533 (151.85%). THE AVERAGE PAYMENT PER CASE DECREASED BY \$11.27 (16.05%). THE AVERAGE PAYMENT PER RECIPIENT DECREASED BY \$2.61 (12.64%).

GENERAL ASSISTANCE (GA)

COMPARING TO JUNE 2007, JULY 2007 CASES DECREASED BY 10 (0.76%) TO 1,302. RECIPIENTS DECREASED BY 13 (0.98%) TO 1,309. PAYMENTS DECREASED BY \$1,270 (0.63%) TO \$198,858. AVERAGE PAYMENT PER CASE INCREASED BY \$0.19 (0.12%) TO \$152.73. AVERAGE PAYMENT PER RECIPIENT INCREASED BY \$0.54 (0.36%) TO \$151.92.

COMPARING TO JULY 2006, JULY 2007 CASES INCREASED BY 188 (16.88%). RECIPIENTS INCREASED BY 187 (16.67%). TOTAL PAYMENTS INCREASED BY \$28,681 (16.85%). THE AVERAGE PAYMENT PER CASE DECREASED BY \$0.03 (0.02%). THE AVERAGE PAYMENT PER RECIPIENT INCREASED BY \$0.25 (0.16%).

TUBERCULOSIS CONTROL PROGRAM (TC)

COMPARING TO JUNE 2007, JULY 2007 CASES INCREASED BY 1 (10.00%) TO 11. RECIPIENTS INCREASED BY 1 (10.00%) TO 11. PAYMENTS DECREASED BY \$89 (7.36%) TO \$1,121. AVERAGE PAYMENT PER CASE DECREASED BY \$19.09 (15.78%) TO \$101.91. AVERAGE PAYMENT PER RECIPIENT DECREASED BY \$19.09 (15.78%) TO \$101.91.

COMPARING TO JULY 2006, JULY 2007 CASES DECREASED BY 13 (54.17%). RECIPIENTS DECREASED BY 13 (54.17%). TOTAL PAYMENTS DECREASED BY \$1,584 (58.56%). THE AVERAGE PAYMENT PER CASE DECREASED BY \$10.80 (9.58%). THE AVERAGE PAYMENT PER RECIPIENT DECREASED BY \$10.80 (9.58%).

SUPPLEMENTAL PAYMENTS PROGRAM (SPP)

AS A RESULT OF ARIZONA'S OMNIBUS BUDGET RECONCILIATION BILL, HB 2535, THE SUPPLEMENTAL PAYMENT PROGRAM (SPP) IS BEING SUSPENDED EFFECTIVE JULY, 2003 THROUGH JUNE, 2004.

FOOD STAMP PROGRAM (FS)

COMPARING TO JUNE 2007, JULY 2007 FOOD STAMP HOUSEHOLDS INCREASED BY 964 (0.43%) TO 226,269. PERSONS RECEIVING FOOD STAMPS INCREASED BY 2,924 (0.53%) TO 554,389. TOTAL COUPON ISSUANCE INCREASED BY \$419,346 (0.78%) TO \$54,108,107. THE AVERAGE HOUSEHOLD ALLOTMENT INCREASED BY \$0.84 (0.35%) TO \$239.13. THE AVERAGE ALLOTMENT PER PERSON INCREASED BY \$0.24 (0.25%) TO \$97.60.

COMPARING TO JULY 2006, JULY 2007 FOOD STAMP HOUSEHOLDS INCREASED BY 10,061 (4.65%). PERSONS RECEIVING FOOD STAMPS INCREASED BY 22,720 (4.27%). TOTAL COUPON ISSUANCE INCREASED BY \$3,389,850 (6.68%). THE AVERAGE ALLOTMENT PER HOUSEHOLD INCREASED BY \$4.55 (1.94%). THE AVERAGE ALLOTMENT PER PERSON INCREASED BY \$2.21 (2.31%).

MEDICAL ASSISTANCE PROGRAM (MA) NEW TABLE INCLUDES PROP. 204 CATEGORIES

COMPARING TO JUNE 2007, JULY 2007 TOTAL RECIPIENTS TOTAL RECIPIENTS INCREASED BY 14,123 (1.61%). SOBRA WOMEN AT 140% FPL INCREASED BY 335 (2.96%). SOBRA CHILDREN INCREASED BY 944 (1.56%). ADULTS W/O CHILD AT 100% INCREASED BY 419 (1.16%). FOSTER CARE INCREASED BY 89 (0.98%). 1931 AT 36% FPL INCREASED BY 4,435 (1.80%). EMERGENCY SERVICES INCREASED BY 1,344 (1.59%). INFANTS INCREASED BY 678 (1.37%). ADULT W/O CHILD AT 140% INCREASED BY 1,841 (2.29%). MEDICAL WSPEND DOWN INCREASED BY 263 (5.19%). SOBRA WOMAN AT 100% INCREASED BY 66 (1.92%). SOBRA CHILD AT 100% INCREASED BY 2,428 (1.58%). TRANSITIONAL MEDICAL DECREASED BY 400 (0.94%). 1931 AT 100% INCREASED BY 1,202 (1.64%). YATI DECREASED BY 4 (1.82%). ALL OTHER CATEGORIES INCREASED BY 483 (2.36%).

COMPARING TO JULY 2006, JULY 2007 TOTAL RECIPIENTS TOTAL RECIPIENTS INCREASED BY 12,370 (1.41%). SOBRA WOMEN AT 140% FPL INCREASED BY 281 (2.47%). SOBRA CHILDREN INCREASED BY 2,925 (4.99%). ADULTS W/O CHILD AT 100% DECREASED BY 263 (0.71%). FOSTER CARE INCREASED BY 398 (4.54%). 1931 AT 36% FPL DECREASED BY 3,540 (1.39%). EMERGENCY SERVICES INCREASED BY 2,291 (2.75%). INFANTS INCREASED BY 823 (1.67%). ADULT W/O CHILD AT 140% DECREASED BY 578 (0.70%). MEDICAL WSPEND DOWN DECREASED BY 365 (6.41%). SOBRA WOMAN AT 100% INCREASED BY 144 (4.28%). SOBRA CHILD AT 100% INCREASED BY 8,036 (5.42%). TRANSITIONAL MEDICAL DECREASED BY 1,545 (3.53%). 1931 AT 100% INCREASED BY 1,896 (2.61%). YATI INCREASED BY 29 (15.51%). ALL OTHER CATEGORIES INCREASED BY 1,838 (9.64%).

## TANF SUMMARY

### TABLES 1, 1A, 1B, & 1C: ARIZONA 1

	JULY 2007							CHANGE FROM			JUNE 2007			JULY 2006		
	FAMILIES	PERSONS	ADULTS	CHILDREN	TOTAL	AVERAGE	AVERAGE	FAMILIES	PERSONS	TOTAL	FAMILIES	PERSONS	TOTAL			
	(CASES)	(RECIP.)				PAYMENTS	PAYMENT/ CASE	PAYMENT/ RECIP.	(CASES)	(RECIP.)	PAYMENTS	(CASES)	(RECIP.)	PAYMENTS		
ARIZONA	36,124	78,315	18,955	59,360	9,560,833	264.67	122.08	82	288	36,116	(2,579)	(7,344)	(822,069)			
DISTRICT I																
MARICOPA	19,516	42,689	9,534	33,155	5,195,740	266.23	121.71	(89)	(239)	(20,024)	(1,578)	(4,238)	(501,294)			
DISTRICT II																
PIMA	7,047	14,834	3,840	10,994	1,846,703	262.06	124.49	98	193	24,725	(570)	(1,626)	(181,095)			
DISTRICT III																
APACHE	131	290	88	202	33,888	258.69	116.86	10	23	2,739	4	24	2,370			
COCONINO	270	566	144	422	67,382	249.56	119.05	8	23	1,492	22	33	5,727			
NAVAJO	1,391	3,391	975	2,416	386,979	278.20	114.12	21	12	3,741	(65)	(247)	(22,052)			
YAVAPAI	611	1,181	248	933	150,820	246.84	127.71	(14)	(21)	(3,832)	(29)	(86)	(5,899)			
DISTRICT IV																
LA PAZ	241	520	165	355	63,443	263.25	122.01	1	8	572	(35)	(117)	(9,091)			
MOHAVE	1,360	2,852	800	2,052	350,667	257.84	122.95	0	35	(1,752)	(5)	4	(2,208)			
YUMA	1,232	2,753	626	2,127	326,452	264.98	118.58	37	126	10,226	(101)	(343)	(38,487)			
DISTRICT V																
GILA	756	1,601	540	1,061	201,925	267.10	126.12	26	82	9,450	(32)	(208)	(15,031)			
PINAL	1,939	4,377	1,155	3,222	518,896	267.61	118.55	22	98	12,734	51	106	10,838			
DISTRICT VI																
COCHISE	924	1,821	445	1,376	235,393	254.75	129.27	(47)	(100)	(9,269)	(156)	(402)	(39,772)			
GRAHAM	404	801	255	546	102,786	254.42	128.32	(1)	13	1,709	(59)	(163)	(17,490)			
GREENLEE	51	109	30	79	14,311	280.61	131.29	0	0	438	(6)	(16)	(937)			
SANTA CRUZ	251	530	110	420	65,448	260.75	123.49	10	35	3,167	(20)	(65)	(7,648)			

1/EXCLUDES: PRIOR MONTH NET TOTALS OF 1,838 CASES; 4,454 RECIPIENTS; \$359,621.  
 1/GRANT DIVERSION TOTALS OF: 12 CASES;\$13,977.  
 ZERO PAY TOTALS OF 166 CASES; 408 RECIPIENTS.

	CURRENT	CURRENT MO.	CURRENT MO.	PRIOR MO.	PRIOR MO.	PRIOR MO.
	MO. CASES	RECIP.	DOLLARS	CASES	RECIP	DOLLARS
PASQUAYAAQUI	267	798	\$85,204	13	44	4,032
WM APACHE	766	2,002	\$228,095	27	75	5,512
SALT RIVER	89	311	\$27,970	9	34	2,631
NAVAJO	0	0	\$0	0	0	0
HOPI	131	389	\$32,823	7	19	789
<b>TOTAL</b>	<b>1,253</b>	<b>3,500</b>	<b>\$374,092</b>	<b>56</b>	<b>172</b>	<b>\$12,964</b>

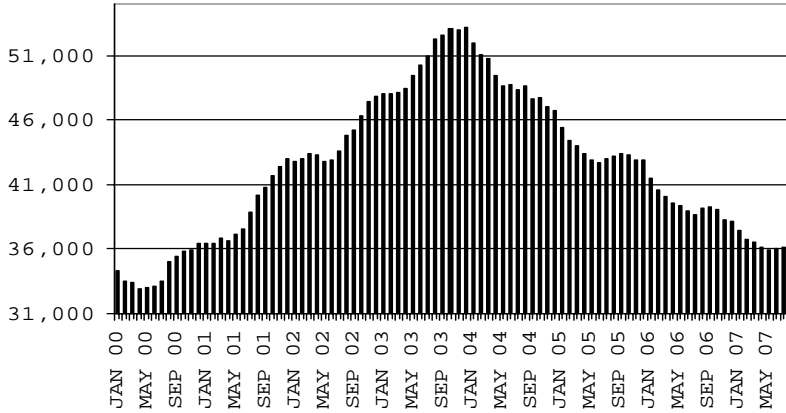
# TANF SUMMARY

## TABLES 1, 1A, 1B, & 1C

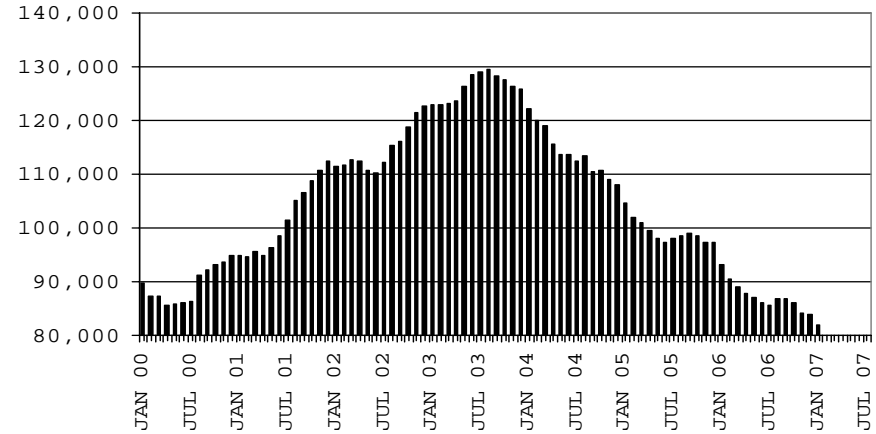
### COMPARISON OF CASES, RECIPIENTS, PAYMENTS & AVERAGE PAYMENTS

FOR 2000, 2001, 2002, 2003, 2004, 2005 & 2006

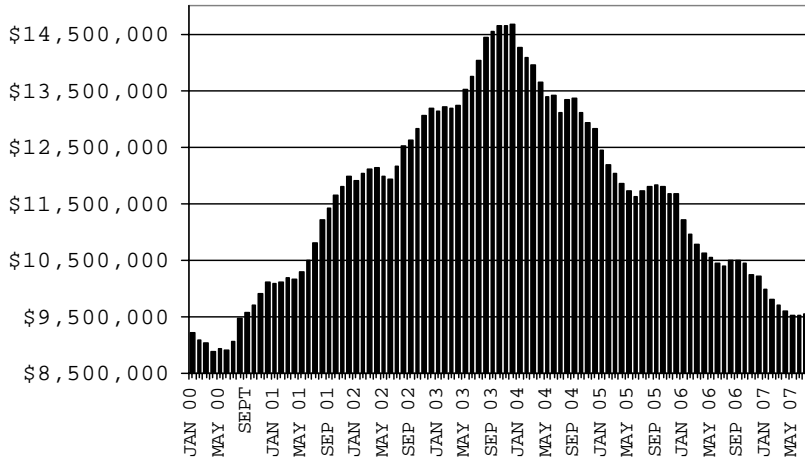
**CASES**



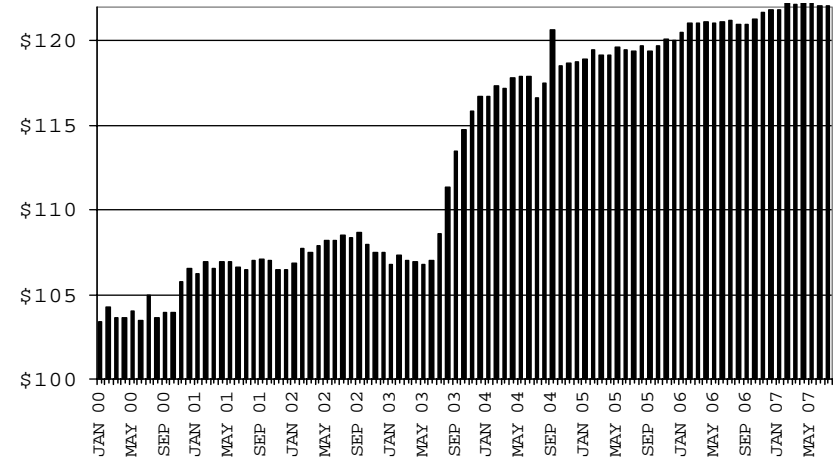
**RECIPIENTS**



**PAYMENTS**



**AVERAGE PAYMENTS PER RECIPIENT**



**TABLE 1**  
**CASH ASSISTANCE: ARIZONA 1/**

	JULY 2007							CHANGE FROM					
								JUNE 2007			JULY 2006		
	FAMILIES (CASES)	(RECIP.)	ADULTS	CHILDREN	TOTAL PAYMENTS	AVERAGE PAYMENT/ CASE	AVERAGE PAYMENT/ RECIP.	FAMILIES (CASES)	PERSONS (RECIP.)	TOTAL PAYMENTS	FAMILIES (CASES)	PERSONS (RECIP.)	TOTAL PAYMENTS
ARIZONA	34,842	74,681	17,585	57,096	9,303,480	267.02	124.58	52	139	21,957	(2,566)	(7,369)	(835,971)
DISTRICT I													
MARICOPA	18,914	41,055	8,997	32,058	5,089,417	269.08	123.97	(90)	(271)	(22,715)	(1,610)	(4,371)	(516,593)
DISTRICT II													
PIMA	6,806	14,164	3,570	10,594	1,801,576	264.70	127.19	88	165	22,464	(517)	(1,478)	(171,934)
DISTRICT III													
APACHE	122	270	81	189	32,652	267.64	120.93	11	29	3,118	4	26	2,897
COCONINO	262	544	135	409	66,211	252.71	121.71	8	20	1,389	22	27	5,195
NAVAJO	1,311	3,100	834	2,266	360,366	274.88	116.25	19	16	4,680	(60)	(214)	(17,706)
YAVAPAI	595	1,143	238	905	148,805	250.09	130.19	(9)	(18)	(2,777)	(20)	(59)	(4,195)
DISTRICT IV													
LA PAZ	223	468	144	324	58,885	264.06	125.82	(1)	4	(443)	(38)	(128)	(10,914)
MOHAVE	1,298	2,672	722	1,950	337,046	259.67	126.14	(8)	15	(2,433)	(32)	(93)	(10,871)
YUMA	1,170	2,588	562	2,026	312,615	267.19	120.79	26	98	6,205	(115)	(372)	(42,244)
DISTRICT V													
GILA	709	1,457	465	992	188,547	265.93	129.41	26	77	8,106	(36)	(214)	(16,287)
PINAL	1,845	4,057	1,030	3,027	495,313	268.46	122.09	13	41	8,070	43	46	6,389
DISTRICT VI													
COCHISE	904	1,776	431	1,345	232,160	256.81	130.72	(42)	(82)	(8,261)	(135)	(334)	(36,210)
GRAHAM	390	769	242	527	100,717	258.25	130.97	0	10	795	(47)	(125)	(15,182)
GREENLEE	51	109	30	79	14,234	279.10	130.59	1	2	398	(4)	(10)	(846)
SANTA CRUZ	242	509	104	405	64,936	268.33	127.58	10	33	3,361	(21)	(70)	(7,470)

1/EXCLUDES: PRIOR MONTH NET TOTALS OF: 1,047 CASES; 2,590 RECIPIENTS; \$290,237.  
GRANT DIVERSION TOTALS OF: 12 CASES; \$13,977  
ZERO PAY TOTALS OF 162 CASES; 388 RECIPIENTS.

	CURRENT MO. CASES	CURRENT MO. RECIP.	CURRENT MO. DOLLARS	PRIOR MO. CASES	PRIOR MO. RECIP.	PRIOR MO. DOLLARS
PASQUAYAUQUI	258	762	82,096	12	39	3,724
WM APACHE	714	1,789	208,044	19	42	2,665
SALT RIVER	89	311	27,970	9	34	2,631
NAVAJO	0	0	0	0	0	0
HOPI	131	389	32,823	7	19	789
TOTAL	1,192	3,251	350,933	47	134	9,809

CASES WITH GRANT UNDER \$100 (SEE TABLE 1B).

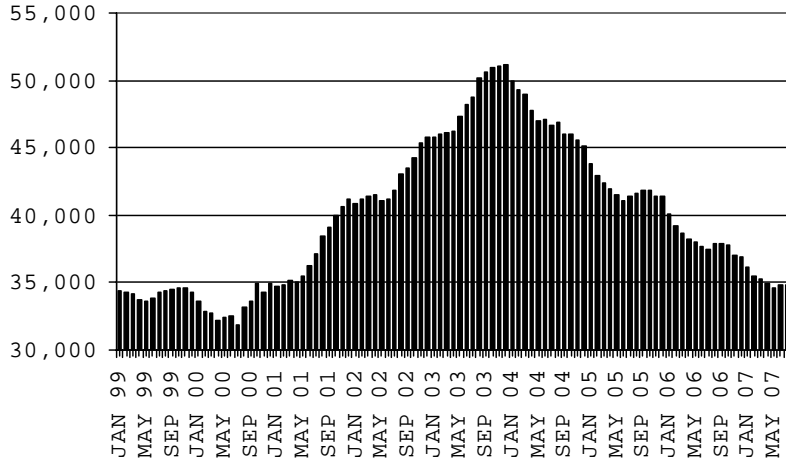
# CHART 1

## CASH ASSISTANCE PROGRAM

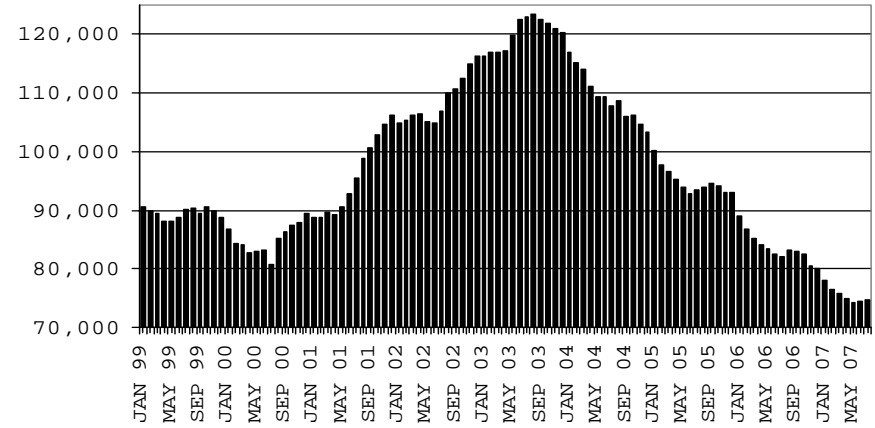
### COMPARISON OF CASES, RECIPIENTS, PAYMENTS & AVERAGE PAYMENTS

FOR 1999, 2000, 2001, 2002, 2003, 2004, 2005 & 2006

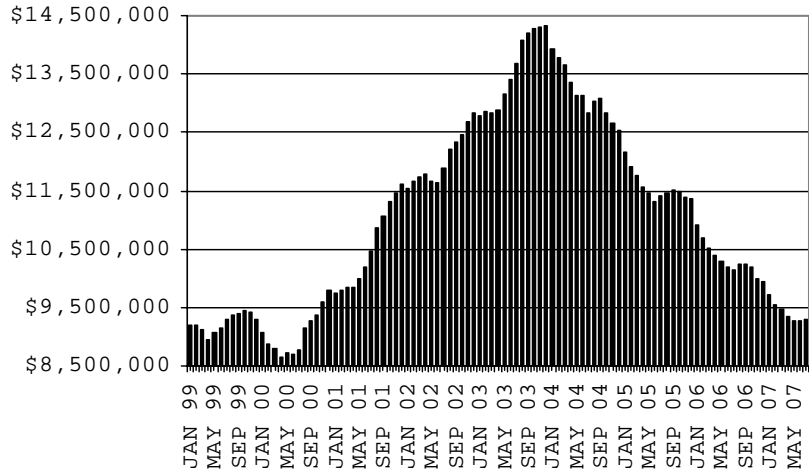
**CASES**



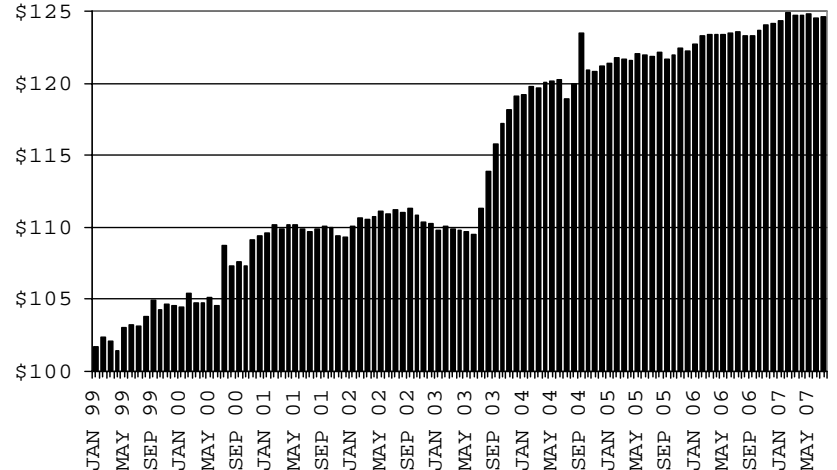
**RECIPIENTS**



**PAYMENTS**



**AVERAGE PAYMENTS PER RECIPIENT**



**TABLE 1A  
CA-UP**

**CASH ASSISTANCE UNEMPLOYED PARENT PROGRAM: ARIZONA 1**

	JULY 2007							CHANGE FROM			JUNE 2007			JULY 2006		
	FAMILIES (CASES)	PERSONS (RECIP.)	ADULTS	CHILDREN	TOTAL PAYMENTS	AVERAGE PAYMENT/ CASE	AVERAGE PAYMENT/ RECIP.	FAMILIES (CASES)	PERSONS (RECIP.)	TOTAL PAYMENTS	FAMILIES (CASES)	PERSONS (RECIP.)	TOTAL PAYMENTS	FAMILIES (CASES)	PERSONS (RECIP.)	TOTAL PAYMENTS
ARIZONA	567	2,164	965	1,199	205,364	362.19	94.90	25	141	12,098	51	182	17,957			
DISTRICT I																
MARICOPA	218	819	339	480	78,771	361.33	96.18	1	19	1,495	34	131	14,244			
DISTRICT II																
PIMA	97	381	176	205	35,130	362.16	92.20	5	34	1,835	(12)	(41)	(5,445)			
DISTRICT III																
APACHE	2	7	4	3	654	327.00	93.43	(1)	(5)	(471)	(2)	(8)	(898)			
COCONINO	3	9	6	3	911	303.67	101.22	2	5	493	3	9	911			
NAVAJO	69	267	131	136	25,820	374.20	96.70	(2)	(13)	(1,337)	(6)	(41)	(4,551)			
YAVAPAI	4	13	6	7	1,201	300.25	92.38	(1)	(2)	(418)	(3)	(13)	(1,480)			
DISTRICT IV																
LA PAZ	10	38	16	22	3,966	396.60	104.37	1	4	852	3	14	1,772			
MOHAVE	29	118	53	65	10,854	374.28	91.98	(1)	(1)	(20)	22	92	8,256			
YUMA	35	116	51	65	11,912	340.34	102.69	12	37	4,059	13	36	4,032			
DISTRICT V																
GILA	37	124	67	57	12,450	336.49	100.40	2	13	1,179	8	18	1,720			
PINAL	54	232	100	132	20,305	376.02	87.52	8	50	4,384	6	35	4,423			
DISTRICT VI																
COCHISE	4	18	7	11	1,794	448.50	99.67	(3)	(9)	(957)	(9)	(31)	(2,955)			
GRAHAM	4	18	8	10	1,462	365.50	81.22	3	12	1,184	(6)	(19)	(1,937)			
GREENLEE	0	0	0	0	0	0.00	0.00	0	0	0	0	0	0			
SANTA CRUZ	1	4	1	3	134	134.00	33.50	(1)	(3)	(180)	0	0	(135)			

1/EXCLUDES: PRIOR MONTH NET TOTALS OF: 68 CASES; 283 RECIPIENTS; \$24,920.  
GRANT DIVERSION TOTALS OF: 0 CASES; \$0.  
ZERO PAY TOTALS OF 4 CASES; 20 RECIPIENTS.

	CURRENT MO. CASES	CURRENT MO. RECIP.	CURRENT MO. DOLLARS	PRIOR MO. CASES	PRIOR MO. RECIP.	PRIOR MO. DOLLARS
PASQUA/YAQUI	9	36	3,108	1	5	308
WM APACHE	52	213	20,051	8	33	2,847
SALT RIVER	0	0	0	0	0	0
NAVAJO	0	0	0	0	0	0
HOPAI	0	0	0	0	0	0
<b>TOTAL</b>	<b>61</b>	<b>249</b>	<b>23,159</b>	<b>9</b>	<b>38</b>	<b>3,155</b>

CASES WITH GRANT UNDER \$100 (SEE TABLE 1C).

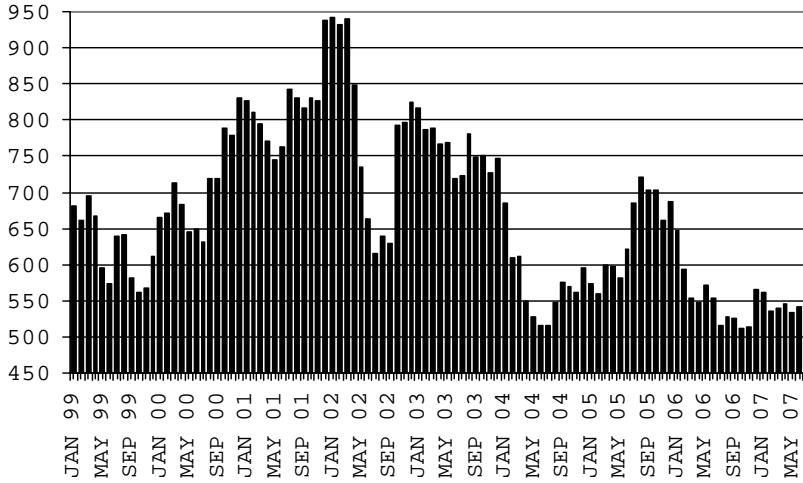
# CHART 1A

## CASH ASSISTANCE UNEMPLOYED PARENT PROGRAM

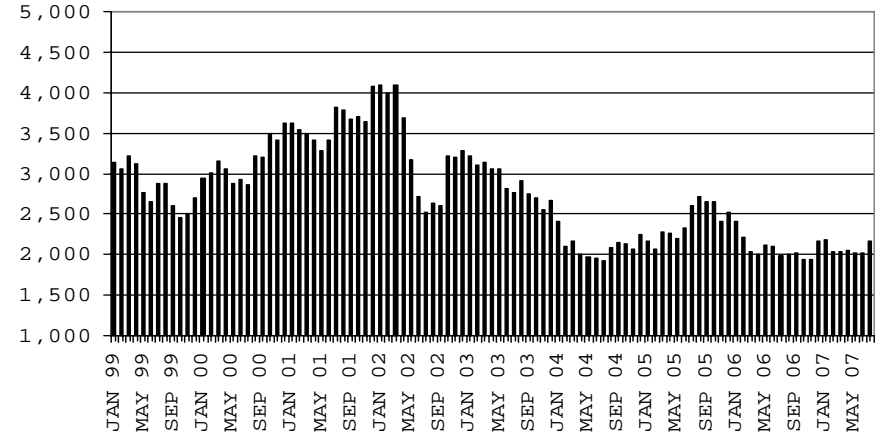
### COMPARISON OF CASES, RECIPIENTS, PAYMENTS & AVERAGE PAYMENTS

FOR 1999, 2000, 2001, 2002, 2003, 2004, 2005 & 2006

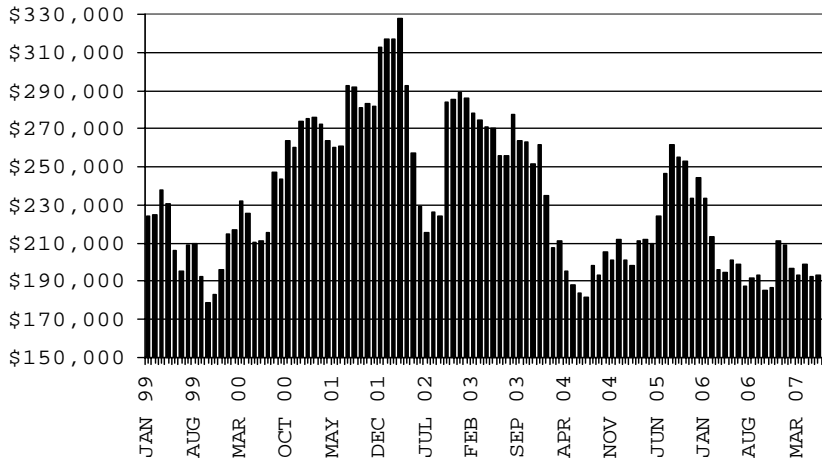
#### CASES



#### RECIPIENTS



#### PAYMENTS



#### AVERAGE PAYMENTS PER RECIPIENT

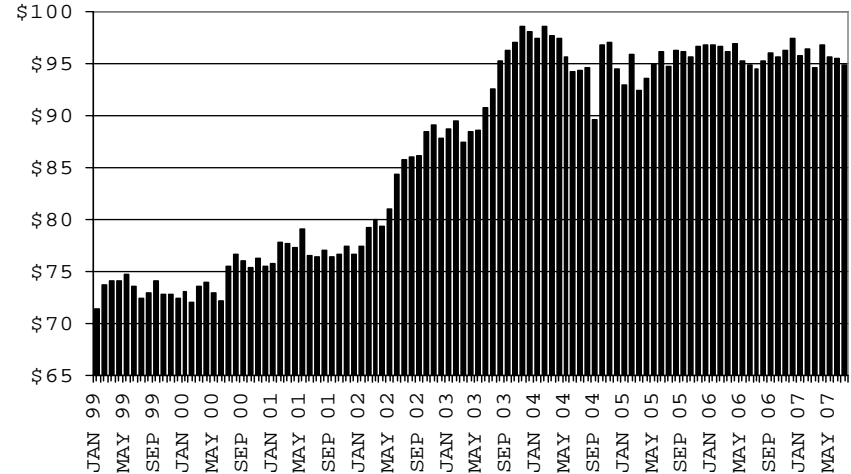


TABLE 1B 1/

CASH ASSISTANCE: ARIZONA  
 CASES WITH GRANT UNDER \$100

	JULY 2007							CHANGE FROM			JUNE 2007			JULY 2006		
	FAMILIES (CASES)	PERSONS (RECIP.)	ADULTS	CHILDREN	TOTAL PAYMENTS	AVERAGE PAYMENT/ CASE	AVERAGE PAYMENT/ RECIP.	FAMILIES (CASES)	PERSONS (RECIP.)	TOTAL PAYMENTS	FAMILIES (CASES)	PERSONS (RECIP.)	TOTAL PAYMENTS	FAMILIES (CASES)	PERSONS (RECIP.)	TOTAL PAYMENTS
	ARIZONA	700	1,421	384	1,037	51,105	73.01	35.96	4	2	2,032	(74)	(189)	(4,588)		
DISTRICT I																
MARICOPA	378	795	192	603	27,225	72.02	34.25	(2)	4	1,110	(6)	(9)	867			
DISTRICT II																
PIMA	138	269	84	185	9,619	69.70	35.76	5	(6)	432	(45)	(120)	(3,967)			
DISTRICT III																
APACHE	7	13	3	10	582	83.14	44.77	1	1	176	2	6	371			
COCONINO	5	13	3	10	260	52.00	20.00	(2)	(2)	(390)	(3)	(3)	(379)			
NAVAJO	11	24	10	14	793	72.09	33.04	4	9	398	1	8	205			
YAVAPAI	12	25	4	21	814	67.83	32.56	(4)	(1)	(637)	(6)	(14)	(224)			
DISTRICT IV																
LA PAZ	8	14	5	9	592	74.00	42.29	1	0	163	1	(2)	136			
MOHAVE	31	56	21	35	2,681	86.48	47.88	8	18	663	3	(1)	321			
YUMA	27	49	13	36	1,925	71.30	39.29	(1)	(9)	(38)	1	(7)	(275)			
DISTRICT V																
GILA	10	20	8	12	928	92.80	46.40	(2)	(8)	165	(4)	(12)	(464)			
PINAL	40	88	25	63	3,278	81.95	37.25	1	7	280	2	25	26			
DISTRICT VI																
COCHISE	16	27	7	20	1,439	89.94	53.30	(2)	(9)	(51)	(12)	(37)	(607)			
GRAHAM	9	11	4	7	514	57.11	46.73	(3)	(5)	(265)	(7)	(22)	(464)			
GREENLEE	0	0	0	0	77	0.00	0.00	(1)	(2)	40	(2)	(6)	(91)			
SANTA CRUZ	8	17	5	12	378	47.25	22.24	1	5	(14)	1	5	(43)			

EXCLUDES: PRIOR MONTH NET TOTALS OF 699 CASES; 1,496 RECIPIENTS; \$42,892.



# CHART 1B

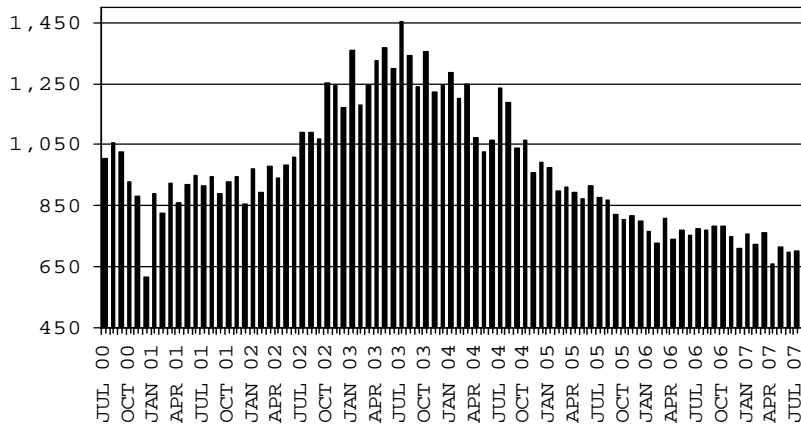
## CASH ASSISTANCE PROGRAM

### CASES WITH GRANT UNDER \$100

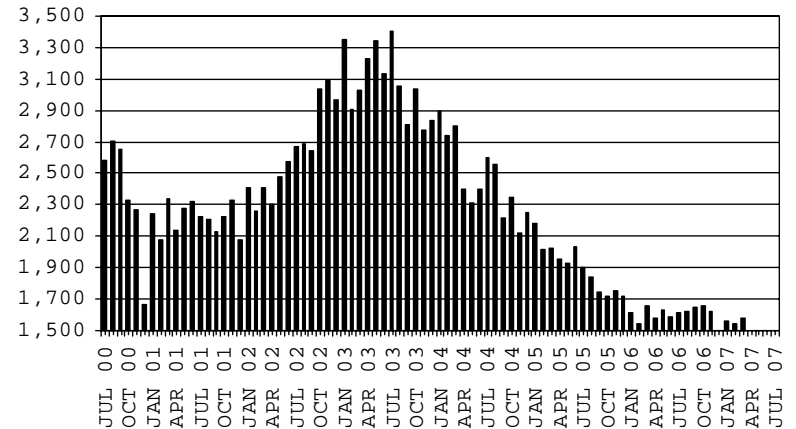
#### COMPARISON OF CASES, RECIPIENTS, PAYMENTS & AVERAGE PAYMENTS

FOR 2000, 2001, 2002, 2003, 2004, 2005 & 2006

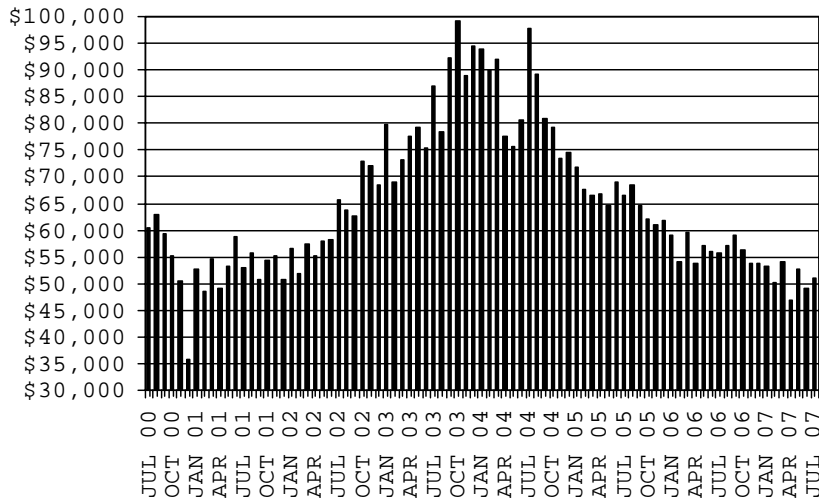
**CASES**



**RECIPIENTS**



**PAYMENTS**



**AVERAGE PAYMENTS PER RECIPIENT**

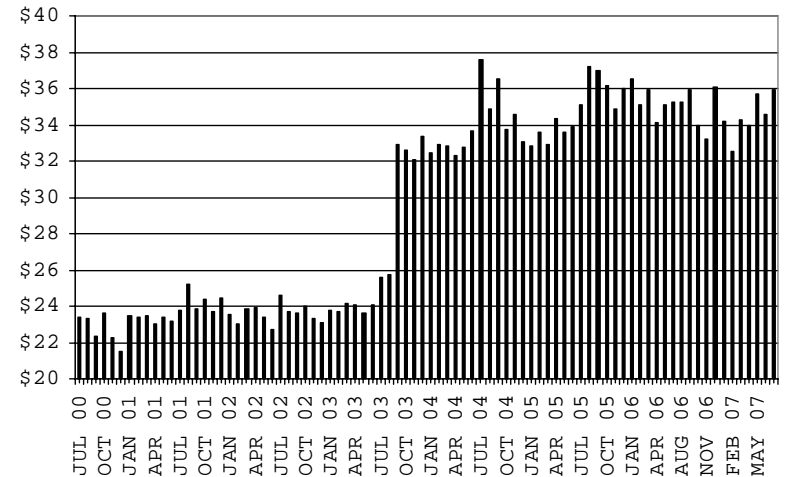


TABLE 1C 1/

CASH ASSISTANCE UNEMPLOYED PARENT PROGRAM: ARIZONA  
 CASES WITH GRANT UNDER \$100

	JULY 2007							CHANGE FROM			JUNE 2007			JULY 2006		
	FAMILIES (CASES)	PERSONS (RECIP.)	ADULTS	CHILDREN	TOTAL PAYMENTS	AVERAGE PAYMENT/ CASE	AVERAGE PAYMENT/ RECIP.	FAMILIES (CASES)	PERSONS (RECIP.)	TOTAL PAYMENTS	FAMILIES (CASES)	PERSONS (RECIP.)	TOTAL PAYMENTS			
	ARIZONA	15	49	21	28	884	58.93	18.04	1	6	29	10	32	533		
DISTRICT I																
MARICOPA	6	20	6	14	327	54.50	16.35	2	9	86	4	11	188			
DISTRICT II																
PIMA	6	20	10	10	378	63.00	18.90	0	0	(6)	4	13	251			
DISTRICT III																
APACHE	0	0	0	0	0	0.00	0.00	(1)	(2)	(84)	0	0	0			
COCONINO	0	0	0	0	0	0.00	0.00	0	0	0	0	0	0			
NAVAJO	0	0	0	0	0	0.00	0.00	0	0	0	0	0	0			
YAVAPAI	0	0	0	0	0	0.00	0.00	0	0	0	0	0	0			
DISTRICT IV																
LA PAZ	0	0	0	0	0	0.00	0.00	0	0	0	(1)	(1)	(85)			
MOHAVE	2	6	4	2	86	43.00	14.33	1	3	38	2	6	86			
YUMA	0	0	0	0	0	0.00	0.00	0	0	0	0	0	0			
DISTRICT V																
GILA	0	0	0	0	0	0.00	0.00	0	0	0	0	0	0			
PINAL	0	0	0	0	0	0.00	0.00	0	0	0	0	0	0			
DISTRICT VI																
COCHISE	0	0	0	0	0	0.00	0.00	0	0	0	0	0	0			
GRAHAM	1	3	1	2	93	93.00	31.00	(1)	(4)	(5)	1	3	93			
GREENLEE	0	0	0	0	0	0.00	0.00	0	0	0	0	0	0			
SANTA CRUZ	0	0	0	0	0	0.00	0.00	0	0	0	0	0	0			

EXCLUDES: PRIOR MONTH NET TOTALS OF 24 CASES; 85 RECIPIENTS; \$1,572.

# CHART 1C

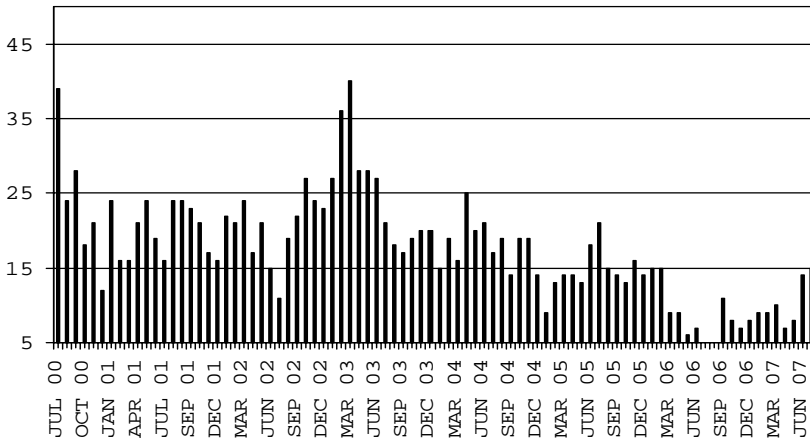
## CASH ASSISTANCE UNEMPLOYED PARENT PROGRAM

### CASES WITH GRANT UNDER \$100

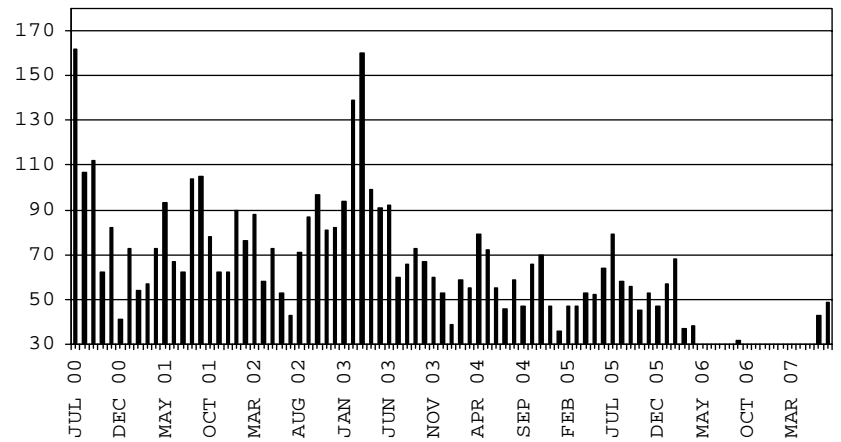
#### COMPARISON OF CASES, RECIPIENTS, PAYMENTS & AVERAGE PAYMENTS

FOR 2000, 2001, 2002, 2003, 2004, 2005 & 2006

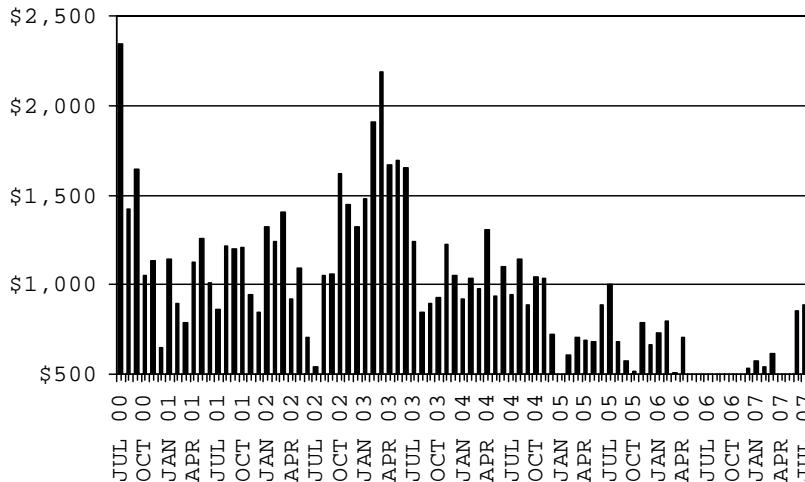
**CASES**



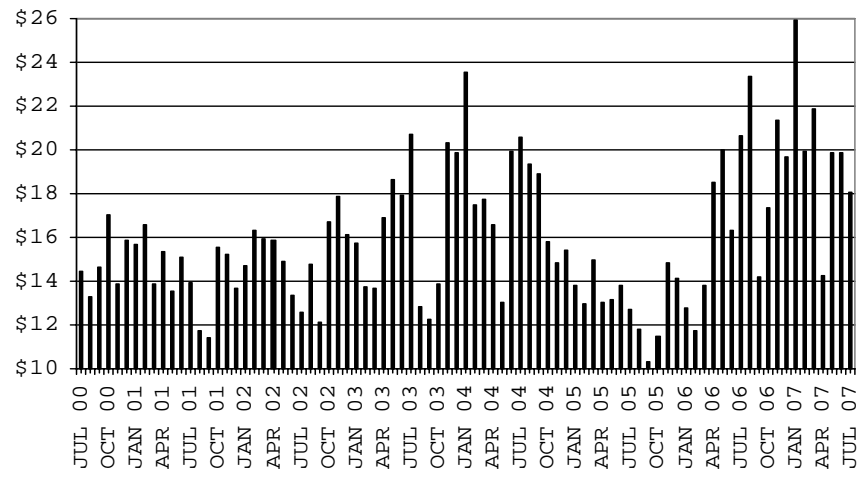
**RECIPIENTS**



**PAYMENTS**



**AVERAGE PAYMENTS PER RECIPIENT**



**TABLE 2**  
**GENERAL ASSISTANCE: ARIZONA 1.**

	CHANGE FROM										
	JULY 2007					JUNE 2007			JULY 2006		
	NUMBER OF CASES	PERSONS (RECIP.)	TOTAL PAYMENTS	AVERAGE PAYMENT/ CASE	AVERAGE PAYMENT/ RECIP.	NUMBER OF CASES	PERSONS (RECIP.)	TOTAL PAYMENTS	NUMBER OF CASES	PERSONS (RECIP.)	TOTAL PAYMENTS
ARIZONA	1,302	1,309	198,858	152.73	151.92	(10)	(13)	(1,270)	188	187	28,681
DISTRICT I											
MARICOPA	545	545	83,562	153.32	153.32	(6)	(7)	(1,328)	157	155	24,992
DISTRICT II											
PIMA	339	340	50,539	149.08	148.64	2	1	603	30	30	3,102
DISTRICT III											
APACHE	11	13	1,828	166.18	140.62	1	1	171	1	2	386
COCONINO	21	22	3,215	153.10	146.14	0	0	(37)	3	3	561
NAVAJO	33	33	5,257	159.30	159.30	4	4	565	5	4	1,177
YAVAPAI	58	59	9,119	157.22	154.56	(13)	(13)	(1,849)	11	12	1,773
DISTRICT IV											
LA PAZ	10	10	1,470	147.00	147.00	(1)	(1)	(173)	2	2	234
MOHAVE	69	70	10,832	156.99	154.74	(4)	(4)	(531)	(21)	(20)	(2,249)
YUMA	33	33	4,227	128.09	128.09	(4)	(5)	(756)	(5)	(5)	(1,662)
DISTRICT V											
GILA	22	22	3,330	151.36	151.36	3	3	498	3	3	156
PINAL	101	102	15,721	155.65	154.13	8	8	1,281	22	22	3,525
DISTRICT VI											
COCHISE	46	46	7,531	163.72	163.72	4	4	978	(16)	(17)	(2,492)
GRAHAM	11	11	1,773	161.18	161.18	(3)	(3)	(519)	(1)	(1)	(238)
GREENLEE	1	1	173	173.00	173.00	0	0	0	0	0	0
SANTA CRUZ	2	2	281	140.50	140.50	(1)	(1)	(173)	(3)	(3)	(584)

1/EXCLUDES: PRIOR MONTH NET TOTALS OF : 229 CASES; 229 RECIPIENTS; \$51,412.  
REFUGEE RESETTLEMENT PROGRAM: 91 CASES; 180 RECIPIENTS; \$24,655.

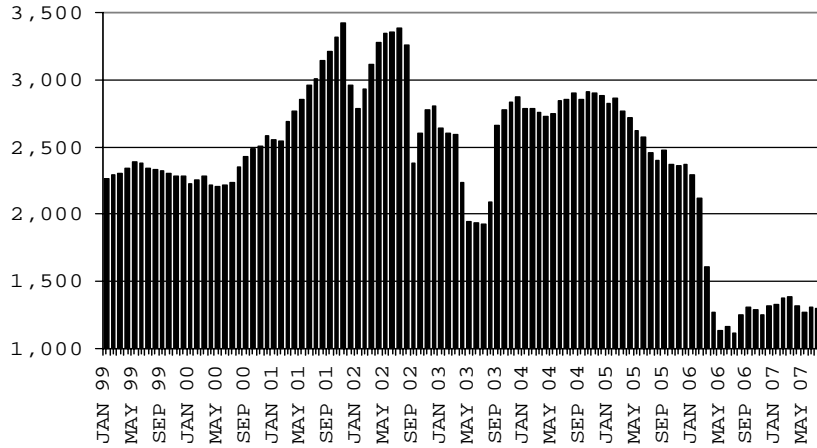
# CHART 2

## GENERAL ASSISTANCE PROGRAM

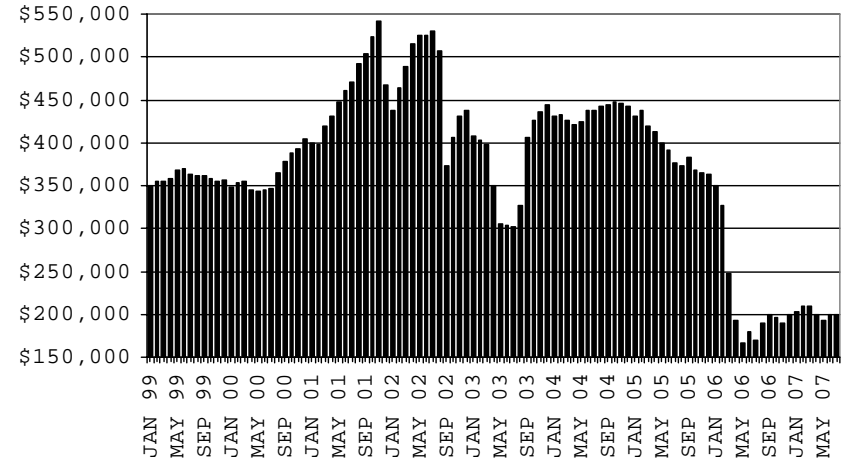
### COMPARISON OF CASES, PAYMENTS & AVERAGE PAYMENTS

FOR 1999, 2000, 2001, 2002, 2003, 2004, 2005 & 2006

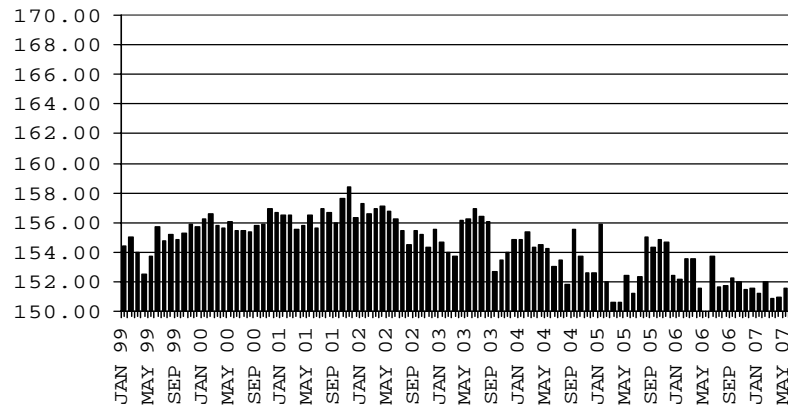
**CASES**



**PAYMENTS**



**AVERAGE PAYMENT PER CASE**



**TABLE 4**  
**TUBERCULOSIS CONTROL: ARIZONA 1/**

	JULY 2007					CHANGE FROM					
	NUMBER OF CASES	PERSONS (RECIP.)	TOTAL PAYMENTS	AVERAGE PAYMENT/ CASE	AVERAGE PAYMENT/ RECIP.	JUNE 2007			JULY 2006		
	NUMBER OF CASES	PERSONS (RECIP.)	TOTAL PAYMENTS	AVERAGE PAYMENT/ CASE	AVERAGE PAYMENT/ RECIP.	NUMBER OF CASES	PERSONS (RECIP.)	TOTAL PAYMENTS	NUMBER OF CASES	PERSONS (RECIP.)	TOTAL PAYMENTS
ARIZONA	11	11	1,121	101.91	101.91	1	1	(89)	(13)	(13)	(1,584)
DISTRICT I											
MARICOPA	11	11	1,121	101.91	101.91	1	1	(89)	(12)	(12)	(1,543)
DISTRICT II											
PIMA	0	0	0	0.00	0.00	0	0	0	(1)	(1)	(41)
DISTRICT III											
APACHE	0	0	0	0.00	0.00	0	0	0	0	0	0
COCONINO	0	0	0	0.00	0.00	0	0	0	0	0	0
NAVAJO	0	0	0	0.00	0.00	0	0	0	0	0	0
YAVAPAI	0	0	0	0.00	0.00	0	0	0	0	0	0
DISTRICT IV											
LA PAZ	0	0	0	0.00	0.00	0	0	0	0	0	0
MOHAVE	0	0	0	0.00	0.00	0	0	0	0	0	0
YUMA	0	0	0	0.00	0.00	0	0	0	0	0	0
DISTRICT V											
GILA	0	0	0	0.00	0.00	0	0	0	0	0	0
PINAL	0	0	0	0.00	0.00	0	0	0	0	0	0
DISTRICT VI											
COCHISE	0	0	0	0.00	0.00	0	0	0	0	0	0
GRAHAM	0	0	0	0.00	0.00	0	0	0	0	0	0
GREENLEE	0	0	0	0.00	0.00	0	0	0	0	0	0
SANTA CRUZ	0	0	0	0.00	0.00	0	0	0	0	0	0

1/EXCLUDES: PRIOR MONTH NET TOTALS OF : 0 CASES; 0 RECIPIENTS; \$0.

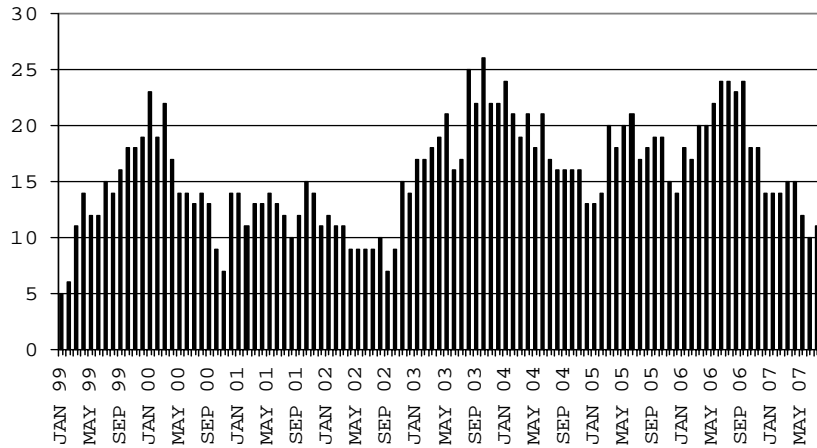
# CHART 4

## TUBERCULOSIS CONTROL PROGRAM

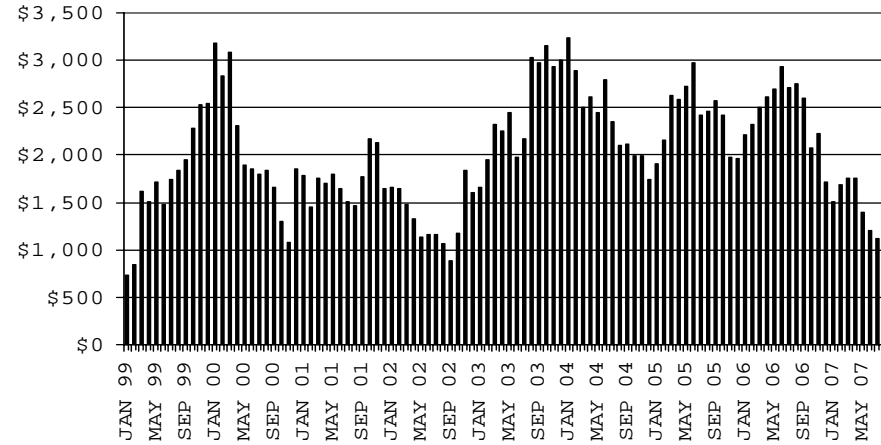
### COMPARISON OF CASES, PAYMENTS & AVERAGE PAYMENTS

FOR 1999, 2000, 2001, 2002, 2003, 2004, 2005 & 2006

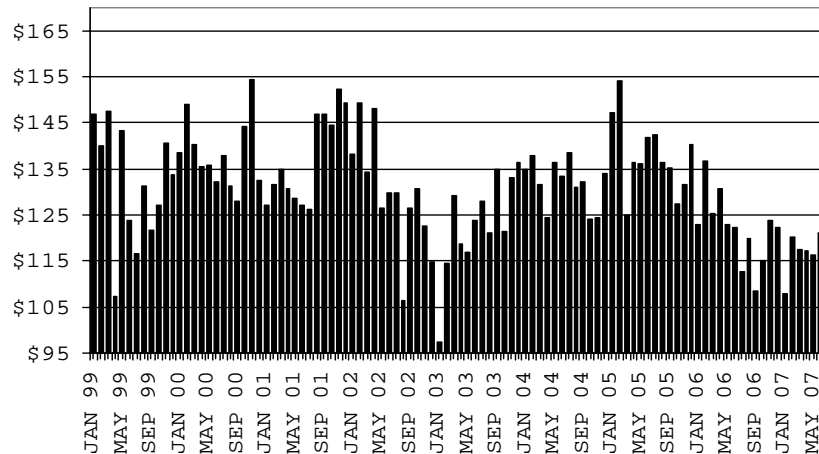
#### CASES



#### PAYMENTS



#### AVERAGE PAYMENT PER CASE



**TABLE 5**

**SUPPLEMENTAL PAYMENTS PROGRAM: ARIZONA 1,  
 BASED ON HB 2535 SPP IS SUSPENDED FROM JULY, 2003 THROUGH JUNE, 2004**

CHANGE FROM

	JULY 2007			JUNE 2007		JULY 2006	
	NUMBER OF PAYMENTS	TOTAL PAYMENTS	AVERAGE PAYMENT	NUMBER OF PAYMENTS	TOTAL PAYMENTS	NUMBER OF PAYMENTS	TOTAL PAYMENTS
ARIZONA	0	0	0	0	0	0	0
DISTRICT I							
MARICOPA	0	0	0	0	0	0	0
DISTRICT II							
PIMA	0	0	0	0	0	0	0
DISTRICT III	0	0	0	0	0	0	0
APACHE	0	0	0	0	0	0	0
COCONINO	0	0	0	0	0	0	0
NAVAJO	0	0	0	0	0	0	0
YAVAPAI	0	0	0	0	0	0	0
DISTRICT IV	0	0	0	0	0	0	0
LA PAZ	0	0	0	0	0	0	0
MOHAVE	0	0	0	0	0	0	0
YUMA	0	0	0	0	0	0	0
DISTRICT V	0	0	0	0	0	0	0
GILA	0	0	0	0	0	0	0
PINAL	0	0	0	0	0	0	0
DISTRICT VI	0	0	0	0	0	0	0
COCHISE	0	0	0	0	0	0	0
GRAHAM	0	0	0	0	0	0	0
GREENLEE	0	0	0	0	0	0	0
SANTA CRUZ	0	0	0	0	0	0	0

1/EXCLUDES: PRIOR MONTH NET TOTALS OF : 0 CASES (PERSONS); \$0.  
 1/TABLE 5 IS BASED ON THE LOCATION OF THE OFFICE THAT PROCEEDS THE APPLICATION.



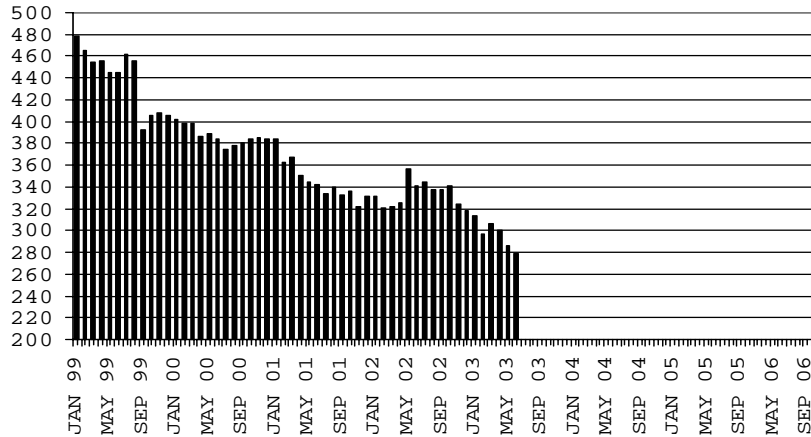
# CHART 5

## SUPPLEMENTAL PAYMENTS PROGRAM

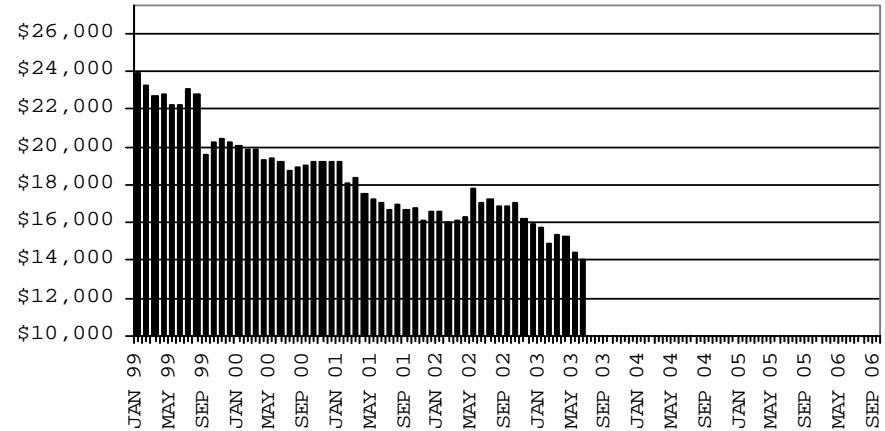
### COMPARISON OF CASES, PAYMENTS & AVERAGE PAYMENTS

FOR 1999, 2000, 2001, 2002, 2003, 2004, 2005 & 2006

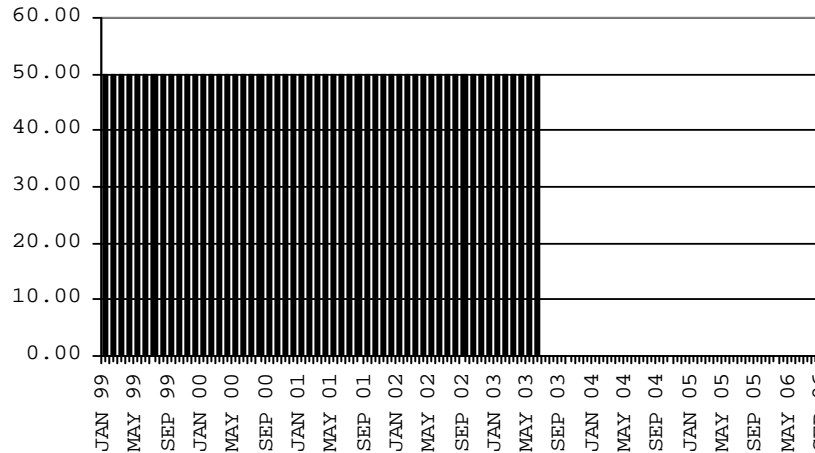
#### CASES



#### PAYMENTS



#### AVERAGE PAYMENT PER CASE



**TABLE 6**  
**FOOD STAMP PROGRAM: ARIZONA 1/**

	JULY 2007					CHANGE FROM			JUNE 2007			JULY 2006		
	HOUSEHOLDS	PERSONS	TOTAL	AVERAGE	AVERAGE	HOUSEHOLDS	PERSONS	TOTAL	HOUSEHOLDS	PERSONS	TOTAL			
			COUPON	ALLOT./	ALLOT./			COUPON			COUPON			
ISSUANCE	HOUSEHOLD	PERSON	ISSUANCE	PERSON	ISSUANCE	ISSUANCE								
ARIZONA	226,269	554,389	54,108,107	239.13	97.60	964	2,924	419,346	10,061	22,720	3,389,850			
DISTRICT I														
MARICOPA	111,824	273,034	27,165,156	242.93	99.49	188	296	40,404	5,170	13,115	1,842,667			
DISTRICT II														
PIMA	40,313	93,077	9,122,991	226.30	98.02	261	515	90,859	1,588	3,082	472,046			
DISTRICT III														
APACHE	6,164	19,480	1,812,498	294.05	93.04	31	323	45,921	(5)	(237)	34,847			
COCONINO	5,127	15,230	1,393,609	271.82	91.50	16	20	7,436	137	47	43,217			
NAVAJO	9,222	26,208	2,453,987	266.10	93.64	39	387	48,644	536	1,025	159,488			
YAVAPAI	6,166	12,399	1,193,892	193.63	96.29	17	65	6,434	226	330	77,637			
DISTRICT IV														
LA PAZ	1,226	2,749	272,377	222.17	99.08	(41)	(83)	(7,671)	14	51	3,965			
MOHAVE	10,095	21,497	2,137,604	211.75	99.44	(27)	(25)	(6,239)	664	1,727	214,002			
YUMA	9,908	26,994	2,443,028	246.57	90.50	255	697	80,151	364	693	96,166			
DISTRICT V														
GILA	3,376	7,969	789,754	233.93	99.10	33	103	17,799	91	27	15,114			
PINAL	11,499	28,934	2,842,676	247.21	98.25	183	549	69,173	1,337	3,508	407,794			
DISTRICT VI														
COCHISE	6,582	14,770	1,391,965	211.48	94.24	(19)	(29)	7,775	33	(294)	16,808			
GRAHAM	2,033	4,838	454,470	223.55	93.94	0	(5)	4,012	(121)	(424)	(23,170)			
GREENLEE	267	549	52,864	197.99	96.29	4	(5)	207	(40)	(102)	(7,883)			
SANTA CRUZ	2,467	6,661	581,236	235.60	87.26	24	116	14,441	67	172	37,152			

1/EXCLUDES: PRIOR MONTH NET TOTALS OF : 8,424 CASES; 22,415 RECIPIENTS; \$1,051,987.  
 AGED CANCELATIONS: 0 CASES; 0 RECIPIENTS; 0.  
 FS COUPON CONVERSIONS: 0 CASES; 0 RECIPIENTS; \$0.  
 FS REINSTATED: 0 CASES; \$0.  
 FS ZERO PAY: 1,418 CASES; 4,205 RECIPIENTS.

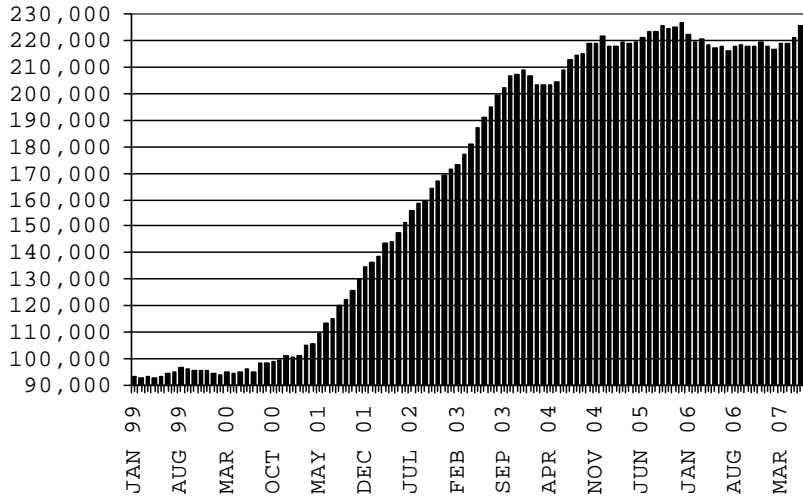
# CHART 6

## FOOD STAMPS PROGRAM

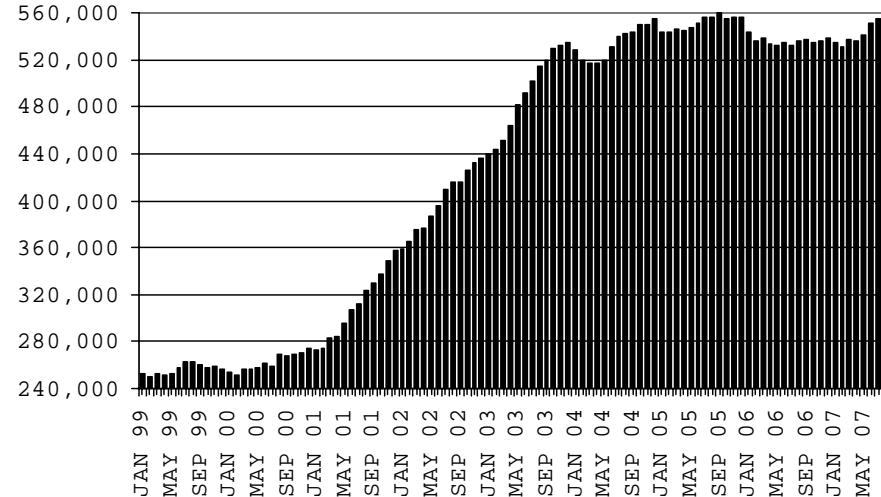
### COMPARISON OF HOUSEHOLDS, RECIPIENTS, PAYMENTS & AVERAGE PAYMENTS

FOR 1999, 2000, 2001, 2002, 2003, 2004, 2005 & 2006

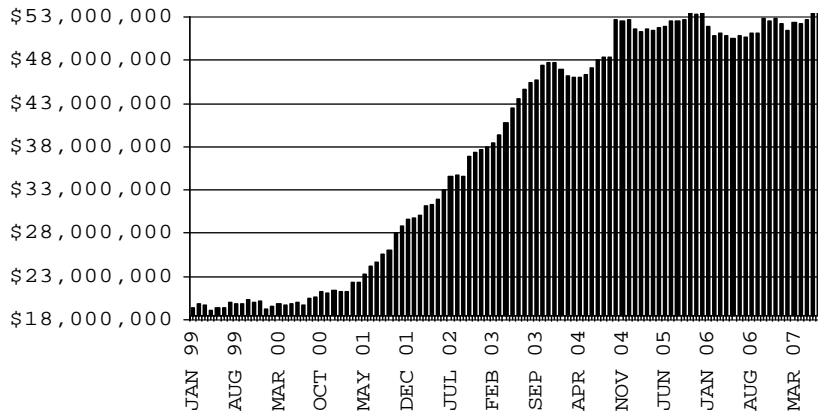
#### HOUSEHOLDS



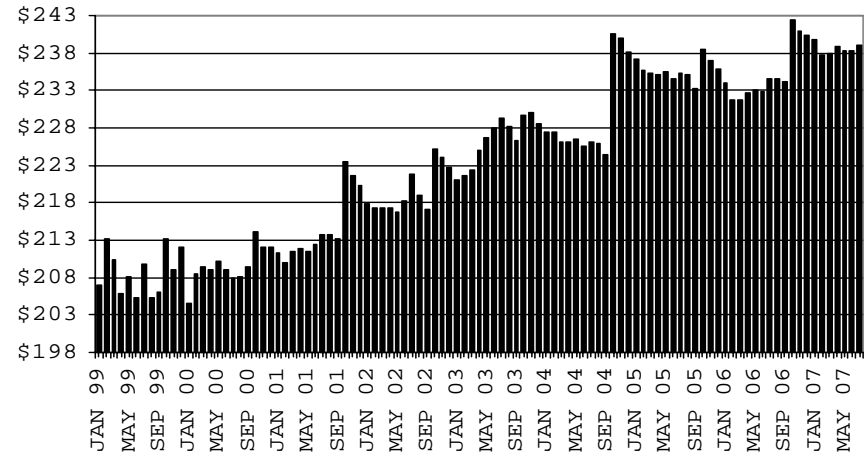
#### RECIPIENTS



#### TOTAL PAYMENTS



#### AVERAGE PAYMENT PER HOUSEHOLD



**TABLE 7A**

**MEDICAL ASSISTANCE PROGRAM**

**RECIPIENTS**

**JULY 2007**

	SOBRA WOMAN 133% FPL	SOBRA CHILD	ADULT W/O CHILD 100% FPL	FOSTER CARE	1931 36% FPL	FEDERAL EMERGENCY SERVICES	ADULT W/O CHILD 40% FPL	MEDICAL W/SPEND DOWN	SOBRA WOMAN 100% FPL	SOBRA CHILD 100% FPL	TRANSITIONAL MEDICAL T1 - T4	1931 100% FPL	YATI	OTHER	TOTAL RECIPIENTS	
ARIZONA	11,664	61,487	36,532	9,169	251,439	85,738	50,172	82,382	5,332	3,505	156,313	42,183	74,500	216	20,908	891,540
DISTRICT I																
MARICOPA	5,967	33,838	15,481	4,627	128,900	65,793	30,265	35,442	2,952	1,753	85,772	20,889	34,015	107	10,360	476,161
DISTRICT II																
PIMA	1,801	9,399	7,177	2,522	39,595	10,792	6,941	15,001	673	562	24,673	7,204	13,302	67	3,669	143,378
DISTRICT III																
APACHE	250	1,450	886	42	10,745	100	946	4,122	64	94	3,694	1,158	2,263	0	318	26,132
COCONINO	400	1,340	1,107	126	6,886	505	1,145	2,747	103	95	3,511	1,266	2,058	10	320	21,619
NAVAJO	372	2,171	1,288	117	11,127	313	1,337	4,520	183	128	4,340	1,344	2,760	4	511	30,515
YAVAPAI	435	1,790	1,593	371	5,266	1,592	1,437	2,524	318	110	3,883	1,313	2,294	12	853	23,791
DISTRICT IV																
LA PAZ	43	229	194	18	1,193	192	171	548	14	25	629	152	326	0	134	3,868
MOHAVE	502	2,159	1,866	235	8,920	936	1,635	4,052	284	156	6,091	1,634	3,507	2	1,118	33,097
YUMA	597	2,600	2,373	267	10,443	2,262	1,901	3,097	210	193	8,324	2,214	5,152	1	1,086	40,720
DISTRICT V																
GILA	146	755	497	77	3,883	150	473	1,828	99	34	1,575	471	976	1	252	11,217
PINAL	622	3,538	1,714	418	13,472	1,783	2,221	4,694	247	191	6,724	2,081	3,534	6	1,082	42,327
DISTRICT VI																
COCHISE	257	1,089	1,264	250	5,964	690	840	2,182	110	83	3,531	1,187	2,127	5	698	20,277
GRAHAM	147	461	362	55	2,077	55	363	829	28	37	1,035	557	654	1	120	6,781
GREENLEE	27	34	43	11	305	8	55	108	8	1	140	65	70	0	26	901
SANTA CRUZ	98	634	687	33	2,663	567	442	688	39	43	2,391	648	1,462	0	361	10,756

**TABLE 7B**

**MEDICAL ASSISTANCE PROGRAM**

**RECIPIENTS**

**CHANGE FROM**

**JUNE 2007**

	SOBRA WOMAN 133% FPL	SOBRA CHILD	ADULT W/O CHILD 100% FPL	FOSTER CARE	1931 36% FPL	FEDERAL EMERGENCY SERVICES	ADULT W/O CHILD 40% FPL	MEDICAL W/SPEND DOWN	SOBRA WOMAN 100% FPL	SOBRA CHILD 100% FPL	TRANSITIONAL MEDICAL T1 - T4	1931 100% FPL	YATI	OTHER	TOTAL RECIPIENTS	
ARIZONA	335	944	419	89	4,435	1,344	678	1,841	263	66	2,428	(400)	1,202	(4)	483	14,123
DISTRICT I																
MARICOPA	191	768	234	73	2,156	1,018	415	858	142	17	1,429	7	520	(5)	290	8,113
DISTRICT II																
PIMA	54	97	60	(18)	886	278	118	451	47	31	285	22	127	0	66	2,504
DISTRICT III																
APACHE	(6)	(22)	(49)	3	375	(3)	1	52	4	13	(145)	(46)	(55)	0	(1)	121
COCONINO	(3)	(30)	(26)	9	(22)	(31)	(1)	(11)	6	5	34	(41)	26	1	(10)	(94)
NAVAJO	17	(30)	(48)	7	283	(5)	25	51	(6)	(15)	(39)	(41)	7	0	19	225
YAVAPAI	3	24	9	1	123	46	41	58	24	2	96	(44)	23	0	4	410
DISTRICT IV																
LA PAZ	(1)	(16)	(1)	0	33	(4)	4	7	(5)	5	(7)	(14)	(16)	0	1	(14)
MOHAVE	19	25	21	4	26	(10)	15	102	7	13	144	60	43	1	40	510
YUMA	39	83	127	9	193	54	14	67	(3)	(8)	310	(183)	265	0	(14)	953
DISTRICT V																
GILA	(5)	(6)	(8)	(5)	73	(8)	1	41	14	(1)	25	(59)	29	(2)	12	101
PINAL	26	33	53	8	266	(16)	40	98	33	2	219	(94)	158	0	54	880
DISTRICT VI																
COCHISE	(7)	(14)	22	3	(66)	5	8	35	1	2	38	61	25	1	19	133
GRAHAM	10	25	11	(6)	27	(2)	(10)	10	(2)	3	(30)	(22)	5	0	1	20
GREENLEE	(3)	(4)	(3)	0	(17)	1	(1)	(3)	1	(1)	6	9	(5)	0	4	(16)
SANTA CRUZ	1	11	17	1	99	21	8	25	0	(2)	63	(15)	50	0	(2)	277

**TABLE 7C**

**MEDICAL ASSISTANCE PROGRAM**

**RECIPIENTS**

**CHANGE FROM**

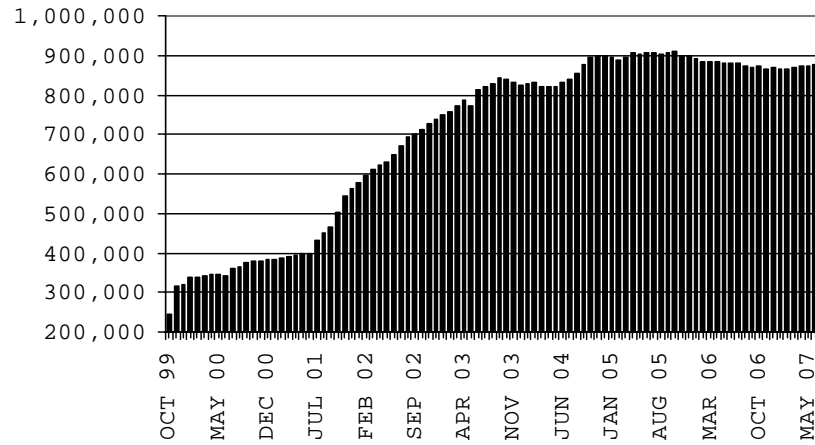
**JULY 2006**

	SOBRA WOMAN 133% FPL	SOBRA CHILD	ADULT W/O CHILD 100% FPL	FOSTER CARE	1931 36% FPL	FEDERAL EMERGENCY SERVICES	ADULT W/O CHILD 40% FPL	MEDICAL W/SPEND DOWN	SOBRA WOMAN 100% FPL	SOBRA CHILD 100% FPL	TRANSITIONAL MEDICAL T1 - T4	3E 1931 100% FPL	YATI	OTHER	TOTAL RECIPIENTS	
ARIZONA	281	2,925	(263)	398	(3,540)	2,291	823	(578)	(365)	144	8,036	(1,545)	1,896	29	1,838	12,370
DISTRICT I																
MARICOPA	77	2,017	(166)	186	(1,571)	2,651	(130)	(1,467)	(252)	119	5,268	(556)	1,009	8	945	8,138
DISTRICT II																
PIMA	26	231	101	81	(389)	452	316	98	(83)	(34)	1,100	(221)	197	6	193	2,074
DISTRICT III																
APACHE	(22)	24	9	6	(478)	(24)	(32)	94	3	2	(22)	134	6	(1)	20	(281)
COCONINO	42	1	(78)	20	(255)	(91)	4	(90)	(15)	14	(241)	(111)	(76)	6	22	(848)
NAVAJO	14	44	(40)	(23)	(202)	13	41	316	22	14	226	(130)	146	4	73	518
YAVAPAI	(38)	2	(54)	9	146	0	68	50	72	(2)	116	(511)	44	4	48	(46)
DISTRICT IV																
LA PAZ	12	(10)	(31)	(1)	(86)	(19)	6	(4)	(10)	8	66	(28)	17	0	22	(58)
MOHAVE	(28)	154	111	7	(66)	(94)	149	(54)	(131)	(1)	452	(188)	127	0	104	542
YUMA	45	90	111	49	(645)	(444)	19	(49)	38	(9)	282	191	197	(3)	105	(23)
DISTRICT V																
GILA	22	(59)	(34)	(4)	(209)	(25)	4	61	11	(1)	83	(23)	29	(2)	4	(143)
PINAL	66	506	35	71	755	5	290	514	1	40	739	120	217	3	167	3,529
DISTRICT VI																
COCHISE	14	(96)	(142)	2	(345)	(99)	(6)	(22)	(15)	(3)	(9)	32	(76)	3	94	(668)
GRAHAM	37	6	(31)	(8)	(228)	(25)	40	(29)	(7)	5	(40)	(82)	(51)	1	(8)	(420)
GREENLEE	5	(16)	(6)	1	(94)	1	8	(49)	3	(1)	(3)	(31)	11	0	0	(171)
SANTA CRUZ	9	31	(48)	2	127	(10)	46	53	(2)	(7)	19	(141)	99	0	49	227

# CHART 7

## MEDICAL ASSISTANCE PROGRAM COMPARISON OF RECIPIENTS FOR 1999, 2000, 2001, 2002, 2003, 2004, 2005 & 2006

**TOTAL RECIPIENTS**



NEW SERIES WHICH INCLUDES 1931