

**Department of Economic Security  
State of Arizona**

**Monthly Statistical Bulletin**

**By  
OSPB M&I**

**Phoenix, AZ  
August, 2007**

<http://www.azdes.gov/faa/Statistics.asp>

\*\*\*\* STATISTICAL BULLETIN \*\*\*\*  
ARIZONA DEPARTMENT OF ECONOMIC SECURITY  
FAMILY ASSISTANCE ADMINISTRATION  
BOX 6123, PHOENIX, ARIZONA 85005  
PHONE (602) 542-3678

AUGUST 2007

THIS ISSUE OF THE STATISTICAL BULLETIN COMPARES AUGUST 2007 DATA FOR EACH OF THE INDICATED PROGRAMS WITH THE INFORMATION FOR JULY 2007 AND AUGUST 2006. STATEWIDE SUMMARIES OF ACTIVITY WITHIN EACH OF THE SPECIFIC PROGRAMS FOR THIS REPORT PERIOD ARE DISCUSSED BELOW. THE TABLES COMPARE CURRENT AND PRIOR MONTH DATA. DISTRICT AND COUNTY COMPARISONS ARE PROVIDED WITHIN THIS BULLETIN

CASH ASSISTANCE (CA)

COMPARING TO JULY 2007, AUGUST 2007 CASES INCREASED BY 833 (2.39%) TO 35,675. RECIPIENTS INCREASED BY 1,989 (2.66%) TO 76,670. PAYMENTS INCREASED BY \$232,747 (2.50%) TO \$9,536,227. AVERAGE PAYMENT PER CASE INCREASED BY \$0.29 (0.11%) TO \$267.31. PAYMENT PER RECIPIENT DECREASED BY \$0.20 (0.16%) TO \$124.38.

COMPARING TO AUGUST 2006, AUGUST 2007 CASES DECREASED BY 2,196 (5.80%). RECIPIENTS DECREASED BY 6,484 (7.80%). TOTAL PAYMENTS DECREASED BY \$712,614 (6.95%). THE AVERAGE PAYMENT PER CASE DECREASED BY \$3.32 (1.23%). THE AVERAGE PAYMENT PER RECIPIENT INCREASED BY \$1.13 (1.01%).

CASH ASSISTANCE UNEMPLOYED PARENT PROGRAM (CA-UP)

COMPARING TO JULY 2007, AUGUST 2007 CASES INCREASED BY 49 (8.64%) TO 616. RECIPIENTS INCREASED BY 237 (10.95%) TO 2,401. PAYMENTS INCREASED BY \$20,947 (10.20%) TO \$226,311. AVERAGE PAYMENT PER CASE INCREASED BY \$5.20 (1.43%) TO \$367.39. PAYMENT PER RECIPIENT DECREASED BY \$0.64 (0.67%) TO \$94.26.

COMPARING TO AUGUST 2006, AUGUST 2007 CASES INCREASED BY 89 (16.89%). RECIPIENTS INCREASED BY 390 (19.39%). TOTAL PAYMENTS INCREASED BY \$34,840 (18.20%). THE AVERAGE PAYMENT PER CASE INCREASED BY \$4.07 (1.12%). THE AVERAGE PAYMENT PER RECIPIENT DECREASED BY \$0.95 (1.00%).

CASH ASSISTANCE WITH GRANT UNDER \$100 (CA-MOE)

COMPARING TO JULY 2007, AUGUST 2007 CASES DECREASED BY 37 (5.29%) TO 663. RECIPIENTS DECREASED BY 37 (2.60%) TO 1,384. PAYMENTS DECREASED BY \$2,146 (4.20%) TO \$48,959. AVERAGE PAYMENT PER CASE INCREASED BY \$0.83 (1.14%) TO \$73.84. AVERAGE PAYMENT PER RECIPIENT DECREASED BY \$0.58 (1.61%) TO \$35.38.

COMPARING TO AUGUST 2006, AUGUST 2007 CASES DECREASED BY 109 (14.12%). RECIPIENTS DECREASED BY 237 (14.62%). TOTAL PAYMENTS DECREASED BY \$8,131 (14.24%). THE AVERAGE PAYMENT PER CASE DECREASED BY \$0.11 (0.15%). THE AVERAGE PAYMENT PER RECIPIENT INCREASED BY \$0.16 (0.45%).

CASH ASSISTANCE UNEMPLOYED PARENT PROGRAM WITH GRANT UNDER \$100 (CA-UP-MOE) NEW PROGRAM STARTING 7/01

COMPARING TO JULY 2007, AUGUST 2007 CASES INCREASED BY 2 (13.33%) TO 17. RECIPIENTS INCREASED BY 0 (0.00%) TO 49. PAYMENTS INCREASED BY \$48 (5.43%) TO \$932. AVERAGE PAYMENT PER CASE DECREASED BY \$4.11 (6.97%) TO \$54.82. PAYMENT PER RECIPIENT INCREASED BY \$0.98 (5.43%) TO \$19.02.

COMPARING TO AUGUST 2006, AUGUST 2007 CASES INCREASED BY 13 (325.00%). RECIPIENTS INCREASED BY 41 (4.64%). TOTAL PAYMENTS INCREASED BY \$745 (398.40%). THE AVERAGE PAYMENT PER CASE INCREASED BY \$8.07 (17.26%). THE AVERAGE PAYMENT PER RECIPIENT DECREASED BY \$4.36 (18.65%).

GENERAL ASSISTANCE (GA)

COMPARING TO JULY 2007, AUGUST 2007 CASES INCREASED BY 8 (0.61%) TO 1,310. RECIPIENTS INCREASED BY 6 (0.46%) TO 1,315. PAYMENTS INCREASED BY \$1,929 (0.97%) TO \$200,787. AVERAGE PAYMENT PER CASE INCREASED BY \$0.54 (0.35%) TO \$153.27. AVERAGE PAYMENT PER RECIPIENT INCREASED BY \$0.77 (0.51%) TO \$152.69.

COMPARING TO AUGUST 2006, AUGUST 2007 CASES INCREASED BY 63 (5.05%). RECIPIENTS INCREASED BY 61 (4.86%). TOTAL PAYMENTS INCREASED BY \$10,531 (5.54%). THE AVERAGE PAYMENT PER CASE INCREASED BY \$0.70 (0.46%). THE AVERAGE PAYMENT PER RECIPIENT INCREASED BY \$0.97 (0.64%).

TUBERCULOSIS CONTROL PROGRAM (TC)

COMPARING TO JULY 2007, AUGUST 2007 CASES INCREASED BY 1 (9.09%) TO 12. RECIPIENTS INCREASED BY 1 (9.09%) TO 12. PAYMENTS INCREASED BY \$201 (17.93%) TO \$1,322. AVERAGE PAYMENT PER CASE INCREASED BY \$8.26 (8.11%) TO \$110.17. AVERAGE PAYMENT PER RECIPIENT INCREASED BY \$8.26 (8.11%) TO \$110.17.

COMPARING TO AUGUST 2006, AUGUST 2007 CASES DECREASED BY 11 (47.83%). RECIPIENTS DECREASED BY 11 (47.83%). TOTAL PAYMENTS DECREASED BY \$1,435 (52.05%). THE AVERAGE PAYMENT PER CASE DECREASED BY \$9.70 (8.09%). THE AVERAGE PAYMENT PER RECIPIENT DECREASED BY \$9.70 (8.09%).

SUPPLEMENTAL PAYMENTS PROGRAM (SPP)

AS A RESULT OF ARIZONA'S OMNIBUS BUDGET RECONCILIATION BILL, HB 2535, THE SUPPLEMENTAL PAYMENT PROGRAM (SPP) IS BEING SUSPENDED EFFECTIVE JULY, 2003 THROUGH JUNE, 2004.

FOOD STAMP PROGRAM (FS)

COMPARING TO JULY 2007, AUGUST 2007 FOOD STAMP HOUSEHOLDS INCREASED BY 5,069 (2.24%) TO 231,338. PERSONS RECEIVING FOOD STAMPS INCREASED BY 11,483 (2.07%) TO 565,872. TOTAL COUPON ISSUANCE INCREASED BY \$1,007,583 (1.86%) TO \$55,115,690. THE AVERAGE HOUSEHOLD ALLOTMENT DECREASED BY \$0.88 (0.37%) TO \$238.25. THE AVERAGE ALLOTMENT PER PERSON DECREASED BY \$0.20 (0.20%) TO \$97.40.

COMPARING TO AUGUST 2006, AUGUST 2007 FOOD STAMP HOUSEHOLDS INCREASED BY 13,544 (6.22%). PERSONS RECEIVING FOOD STAMPS INCREASED BY 30,398 (5.68%). TOTAL COUPON ISSUANCE INCREASED BY \$4,032,741 (7.89%). THE AVERAGE ALLOTMENT PER HOUSEHOLD INCREASED BY \$3.70 (1.58%). THE AVERAGE ALLOTMENT PER PERSON INCREASED BY \$2.00 (2.10%).

MEDICAL ASSISTANCE PROGRAM (MA) NEW TABLE INCLUDES PROP. 204 CATEGORIES

COMPARING TO JULY 2007, AUGUST 2007 TOTAL RECIPIENTS TOTAL RECIPIENTS INCREASED BY 5,706 (0.64%). SOBRA WOMEN AT 140% FPL INCREASED BY 56 (0.48%). SOBRA CHILDREN INCREASED BY 67 (0.11%). ADULTS W/O CHILD AT 100% INCREASED BY 181 (0.50%). FOSTER CARE INCREASED BY 100 (1.09%). 1931 AT 36% FPL INCREASED BY 2,311 (0.92%). EMERGENCY SERVICES INCREASED BY 125 (0.15%). INFANTS INCREASED BY 526 (1.05%). ADULT W/O CHILD AT 140% INCREASED BY 1,467 (1.78%). MEDICAL WSPEND DOWN DECREASED BY 160 (3.00%). SOBRA WOMAN AT 100% DECREASED BY 14 (0.40%). SOBRA CHILD AT 100% INCREASED BY 135 (0.09%). TRANSITIONAL MEDICAL INCREASED BY 283 (0.67%). 1931 AT 100% INCREASED BY 131 (0.18%). YATI INCREASED BY 10 (4.63%). ALL OTHER CATEGORIES INCREASED BY 488 (2.33%).

COMPARING TO AUGUST 2006, AUGUST 2007 TOTAL RECIPIENTS TOTAL RECIPIENTS INCREASED BY 23,554 (2.70%). SOBRA WOMEN AT 140% FPL INCREASED BY 381 (3.36%). SOBRA CHILDREN INCREASED BY 3,412 (5.87%). ADULTS W/O CHILD AT 100% INCREASED BY 459 (1.27%). FOSTER CARE INCREASED BY 524 (5.99%). 1931 AT 36% FPL INCREASED BY 186 (0.07%). EMERGENCY SERVICES INCREASED BY 2,713 (3.26%). INFANTS INCREASED BY 1,102 (2.22%). ADULT W/O CHILD AT 140% INCREASED BY 2,771 (3.42%). MEDICAL WSPEND DOWN DECREASED BY 415 (7.43%). SOBRA WOMAN AT 100% INCREASED BY 219 (6.69%). SOBRA CHILD AT 100% INCREASED BY 8,833 (5.98%). TRANSITIONAL MEDICAL DECREASED BY 1,860 (4.20%). 1931 AT 100% INCREASED BY 2,958 (4.13%). YATI INCREASED BY 44 (24.18%). ALL OTHER CATEGORIES INCREASED BY 2,227 (11.62%).

## TANF SUMMARY

### TABLES 1, 1A, 1B, & 1C: ARIZONA 1/

	AUGUST 2007							JULY 2007			AUGUST 2006		
	FAMILIES (CASES)	PERSONS (RECIP.)	ADULTS	CHILDREN	TOTAL PAYMENTS	AVERAGE	AVERAGE	FAMILIES (CASES)	PERSONS (RECIP.)	TOTAL PAYMENTS	FAMILIES (CASES)	PERSONS (RECIP.)	TOTAL PAYMENTS
						PAYMENT/ CASE	PAYMENT/ RECIP.						
ARIZONA	36,971	80,504	19,735	60,769	9,812,429	265.41	121.89	847	2,189	251,596	(2,203)	(6,290)	(685,160)
DISTRICT I													
MARICOPA	19,932	43,828	9,934	33,894	5,329,057	267.36	121.59	416	1,139	133,317	(1,288)	(3,379)	(389,840)
DISTRICT II													
PIMA	7,230	15,253	3,981	11,272	1,902,192	263.10	124.71	183	419	55,489	(520)	(1,515)	(165,778)
DISTRICT III													
APACHE	153	348	113	235	39,826	260.30	114.44	22	58	5,938	27	85	7,951
COCONINO	273	586	145	441	66,949	245.23	114.25	3	20	(433)	14	28	2,341
NAVAJO	1,405	3,437	982	2,455	389,078	276.92	113.20	14	46	2,099	(84)	(290)	(29,180)
YAVAPAI	619	1,196	258	938	153,004	247.18	127.93	8	15	2,184	(44)	(112)	(8,709)
DISTRICT IV													
LA PAZ	243	527	168	359	62,564	257.47	118.72	2	7	(879)	(34)	(120)	(10,174)
MOHAVE	1,394	2,952	850	2,102	360,084	258.31	121.98	34	100	9,417	(3)	23	5,110
YUMA	1,290	2,852	665	2,187	340,632	264.06	119.44	58	99	14,180	(113)	(409)	(45,229)
DISTRICT V													
GILA	782	1,679	569	1,110	206,832	264.49	123.19	26	78	4,907	(37)	(182)	(16,761)
PINAL	1,995	4,538	1,200	3,338	537,020	269.18	118.34	56	161	18,124	105	237	28,692
DISTRICT VI													
COCHISE	949	1,877	476	1,401	242,981	256.04	129.45	25	56	7,588	(138)	(384)	(37,756)
GRAHAM	408	805	252	553	103,921	254.71	129.09	4	4	1,135	(50)	(149)	(15,572)
GREENLEE	51	105	29	76	13,526	265.22	128.82	0	(4)	(785)	(4)	(14)	(603)
SANTA CRUZ	247	521	113	408	64,763	262.20	124.31	(4)	(9)	(685)	(34)	(109)	(9,652)

1/EXCLUDES: PRIOR MONTH NET TOTALS OF 1,425 CASES; 3,817 RECIPIENTS; \$376,680.  
 1/GRANT DIVERSION TOTALS OF: 0 CASES;\$0.  
 ZERO PAY TOTALS OF 0 CASES; 0 RECIPIENTS.

	CURRENT MO. CASES	CURRENT MO. RECIP.	CURRENT MO. DOLLARS	PRIOR MO. CASES	PRIOR MO. RECIP.	PRIOR MO. DOLLARS
PASQUAYAOUI	278	826	\$88,801	10	28	2,211
WM APACHE	763	1,996	\$226,166	19	60	2,885
SALT RIVER	93	334	\$30,240	8	27	1,855
NAVAJO	0	0	\$0	0	0	0
HOPI	138	406	\$33,454	8	21	999
<b>TOTAL</b>	<b>1,272</b>	<b>3,562</b>	<b>\$378,661</b>	<b>45</b>	<b>136</b>	<b>\$7,950</b>

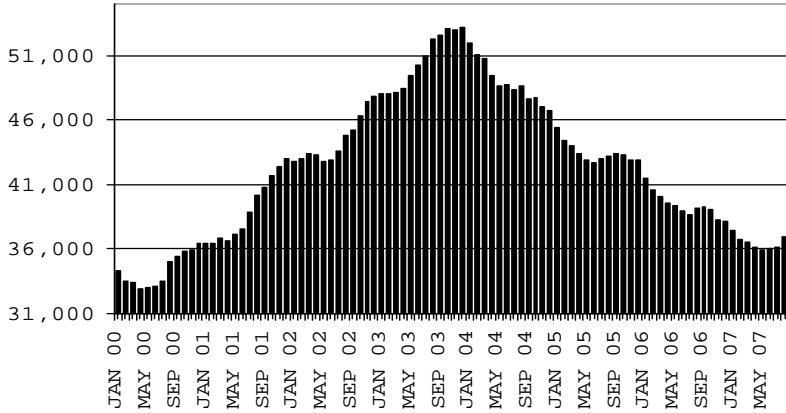
# TANF SUMMARY

## TABLES 1, 1A, 1B, & 1C

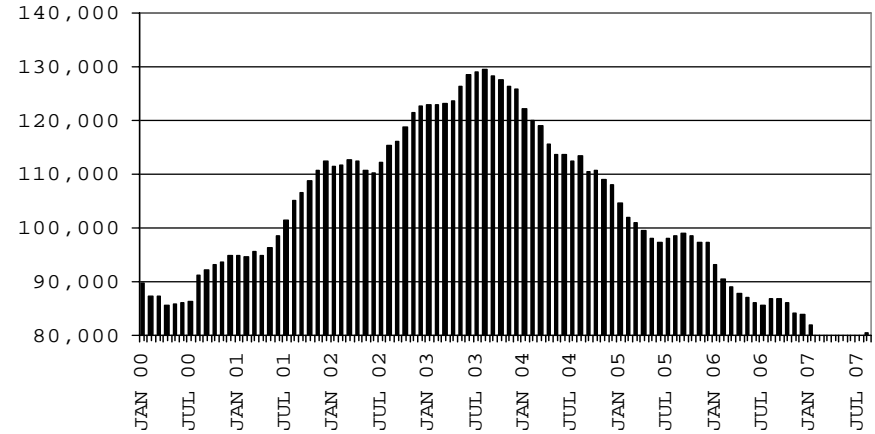
### COMPARISON OF CASES, RECIPIENTS, PAYMENTS & AVERAGE PAYMENTS

FOR 2000, 2001, 2002, 2003, 2004, 2005, 2006, & 2007

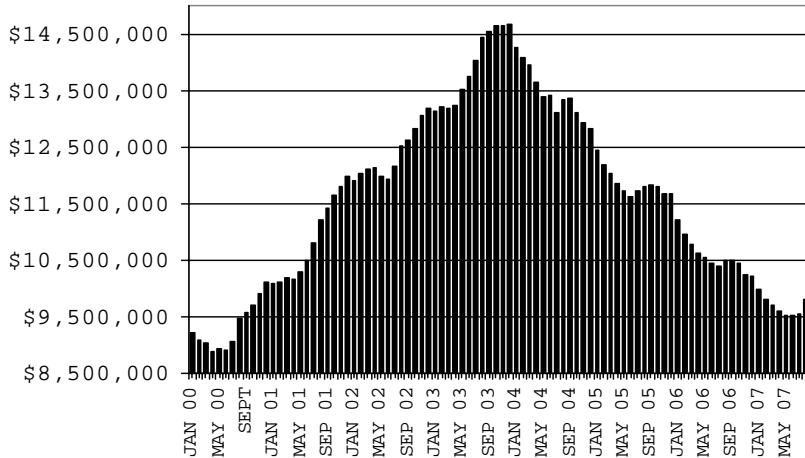
**CASES**



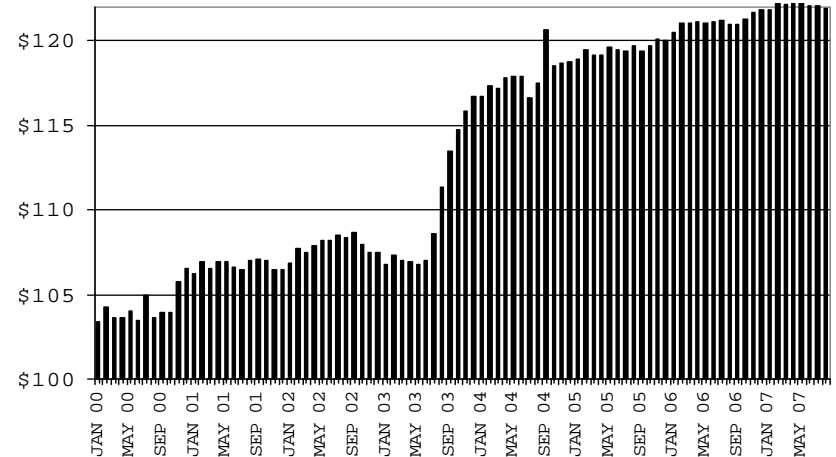
**RECIPIENTS**



**PAYMENTS**



**AVERAGE PAYMENTS PER RECIPIENT**



**TABLE 1**  
**CASH ASSISTANCE: ARIZONA 1/**

	AUGUST 2007							CHANGE FROM			AUGUST 2006		
	FAMILIES (CASES)	(RECIP.)	ADULTS	CHILDREN	TOTAL PAYMENTS	AVERAGE	AVERAGE	FAMILIES (CASES)	PERSONS (RECIP.)	TOTAL PAYMENTS	FAMILIES (CASES)	PERSONS (RECIP.)	TOTAL PAYMENTS
						PAYMENT/ CASE	PAYMENT/ RECIP.						
ARIZONA	35,675	76,670	18,273	58,397	9,536,227	267.31	124.38	833	1,989	232,747	(2,196)	(6,484)	(712,614)
DISTRICT I													
MARICOPA	19,342	42,167	9,372	32,795	5,217,627	269.76	123.74	428	1,112	128,210	(1,285)	(3,466)	(404,776)
DISTRICT II													
PIMA	7,005	14,584	3,713	10,871	1,854,149	264.69	127.14	199	420	52,573	(481)	(1,440)	(160,933)
DISTRICT III													
APACHE	140	315	100	215	37,501	267.86	119.05	18	45	4,849	24	71	6,728
COCONINO	259	552	132	420	65,491	252.86	118.64	(3)	8	(720)	6	13	1,757
NAVAJO	1,325	3,120	841	2,279	362,440	273.54	116.17	14	20	2,074	(84)	(317)	(27,775)
YAVAPAI	600	1,145	242	903	149,952	249.92	130.96	5	2	1,147	(36)	(102)	(8,615)
DISTRICT IV													
LA PAZ	227	481	147	334	58,904	259.49	122.46	4	13	19	(36)	(126)	(11,095)
MOHAVE	1,328	2,749	759	1,990	344,937	259.74	125.48	30	77	7,891	(9)	(26)	(1,068)
YUMA	1,218	2,655	590	2,065	325,116	266.93	122.45	48	67	12,501	(133)	(463)	(49,621)
DISTRICT V													
GILA	727	1,521	487	1,034	192,627	264.96	126.64	18	64	4,080	(51)	(209)	(19,231)
PINAL	1,893	4,180	1,057	3,123	509,293	269.04	121.84	48	123	13,980	93	170	22,171
DISTRICT VI													
COCHISE	930	1,832	463	1,369	239,856	257.91	130.93	26	56	7,696	(122)	(341)	(36,125)
GRAHAM	390	761	232	529	100,568	257.87	132.15	0	(8)	(149)	(50)	(145)	(15,414)
GREENLEE	50	103	28	75	13,479	269.58	130.86	(1)	(6)	(755)	(3)	(9)	(408)
SANTA CRUZ	241	505	110	395	64,287	266.75	127.30	(1)	(4)	(649)	(29)	(94)	(8,209)

1/EXCLUDES: PRIOR MONTH NET TOTALS OF: 1,297 CASES; 3,312 RECIPIENTS; \$341,907.  
GRANT DIVERSION TOTALS OF: 0 CASES; \$0  
ZERO PAY TOTALS OF 0 CASES; 0 RECIPIENTS.

	CURRENT MO. CASES	CURRENT MO. RECIP.	CURRENT MO. DOLLARS	PRIOR MO. CASES	PRIOR MO. RECIP	PRIOR MO. DOLLARS
PASQUAYYAQUI	269	785	85,333	10	28	2,211
WM APACHE	712	1,779	207,106	14	38	1,786
SALT RIVER	93	334	30,240	8	27	1,855
NAVAJO	0	0	0	0	0	0
HOPI	138	406	33,454	8	21	999
<b>TOTAL</b>	<b>1,212</b>	<b>3,304</b>	<b>356,133</b>	<b>40</b>	<b>114</b>	<b>6,851</b>

CASES WITH GRANT UNDER \$100 (SEE TABLE 1B).

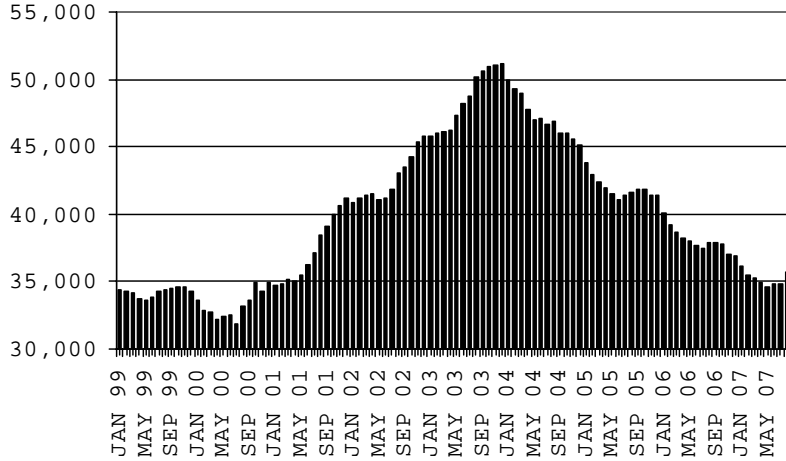
# CHART 1

## CASH ASSISTANCE PROGRAM

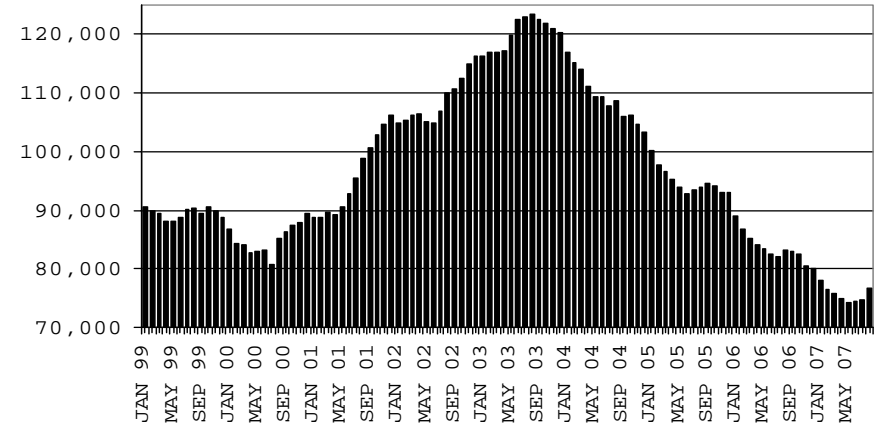
### COMPARISON OF CASES, RECIPIENTS, PAYMENTS & AVERAGE PAYMENTS

FOR 1999, 2000, 2001, 2002, 2003, 2004, 2005, 2006 & 2007

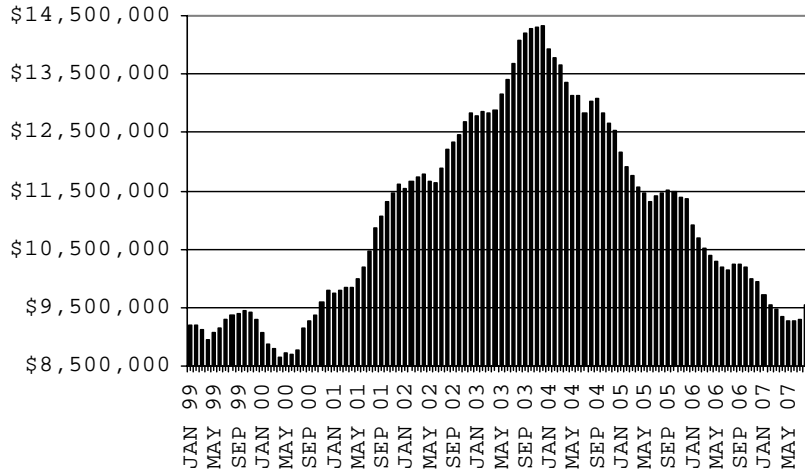
**CASES**



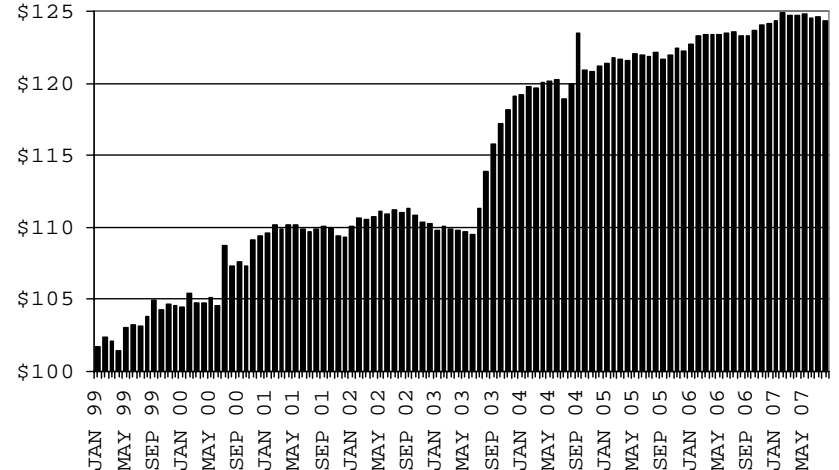
**RECIPIENTS**



**PAYMENTS**



**AVERAGE PAYMENTS PER RECIPIENT**



**TABLE 1A  
CA-UP**

**CASH ASSISTANCE UNEMPLOYED PARENT PROGRAM: ARIZONA 1/**

	AUGUST 2007							CHANGE FROM			AUGUST 2006		
	FAMILIES (CASES)	PERSONS (RECIP.)	ADULTS	CHILDREN	TOTAL PAYMENTS	AVERAGE PAYMENT/ CASE	AVERAGE PAYMENT/ RECIP.	FAMILIES (CASES)	PERSONS (RECIP.)	TOTAL PAYMENTS	FAMILIES (CASES)	PERSONS (RECIP.)	TOTAL PAYMENTS
ARIZONA	616	2,401	1,057	1,344	226,311	367.39	94.26	49	237	20,947	89	390	34,840
DISTRICT I													
MARICOPA	225	868	357	511	84,337	374.83	97.16	7	49	5,566	34	150	16,184
DISTRICT II													
PIMA	108	435	197	238	39,100	362.04	89.89	11	54	3,970	(3)	14	(1,657)
DISTRICT III													
APACHE	5	19	10	9	1,827	365.40	96.16	3	12	1,173	3	14	1,205
COCONINO	2	7	4	3	636	318.00	90.86	(1)	(2)	(275)	0	0	155
NAVAJO	71	289	133	156	26,167	368.55	90.54	2	22	347	3	21	(806)
YAVAPAI	7	26	12	14	2,326	332.29	89.46	3	13	1,125	2	7	471
DISTRICT IV													
LA PAZ	9	31	14	17	3,236	359.56	104.39	(1)	(7)	(730)	2	8	954
MOHAVE	35	143	65	78	13,290	379.71	92.94	6	25	2,436	20	80	7,792
YUMA	40	137	56	81	12,957	323.93	94.58	5	21	1,045	13	37	3,843
DISTRICT V													
GILA	37	127	69	58	13,106	354.22	103.20	0	3	656	7	24	2,265
PINAL	64	268	117	151	24,624	384.75	91.88	10	36	4,319	12	55	6,561
DISTRICT VI													
COCHISE	4	18	7	11	1,792	448.00	99.56	0	0	(2)	(3)	(12)	(1,038)
GRAHAM	8	29	15	14	2,779	347.38	95.83	4	11	1,317	1	2	66
GREENLEE	0	0	0	0	0	0.00	0.00	0	0	0	0	0	0
SANTA CRUZ	1	4	1	3	134	134.00	33.50	0	0	0	(2)	(10)	(1,155)

1/EXCLUDES: PRIOR MONTH NET TOTALS OF: 90 CASES; 364 RECIPIENTS; \$32,941.  
GRANT DIVERSION TOTALS OF: 0 CASES; \$0.  
ZERO PAY TOTALS OF 0 CASES; 0 RECIPIENTS.

	CURRENT MO. CASES	CURRENT MO. RECIP.	CURRENT MO. DOLLARS	PRIOR MO. CASES	PRIOR MO. RECIP.	PRIOR MO. DOLLARS
PASQUA/YAQUI	9	41	3,468	0	0	0
WM APACHE	51	217	19,060	5	22	1,099
SALT RIVER	0	0	0	0	0	0
NAVAJO	0	0	0	0	0	0
HOPÍ	0	0	0	0	0	0
<b>TOTAL</b>	<b>60</b>	<b>258</b>	<b>22,528</b>	<b>5</b>	<b>22</b>	<b>1,099</b>

CASES WITH GRANT UNDER \$100 (SEE TABLE 1C).

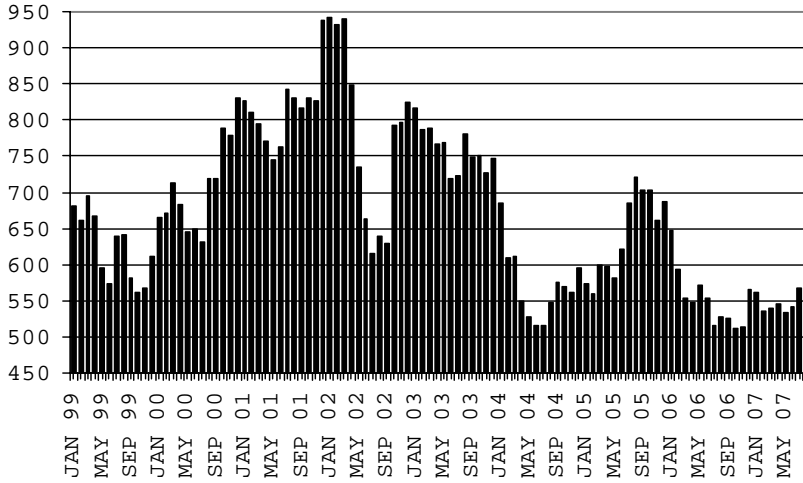
# CHART 1A

## CASH ASSISTANCE UNEMPLOYED PARENT PROGRAM

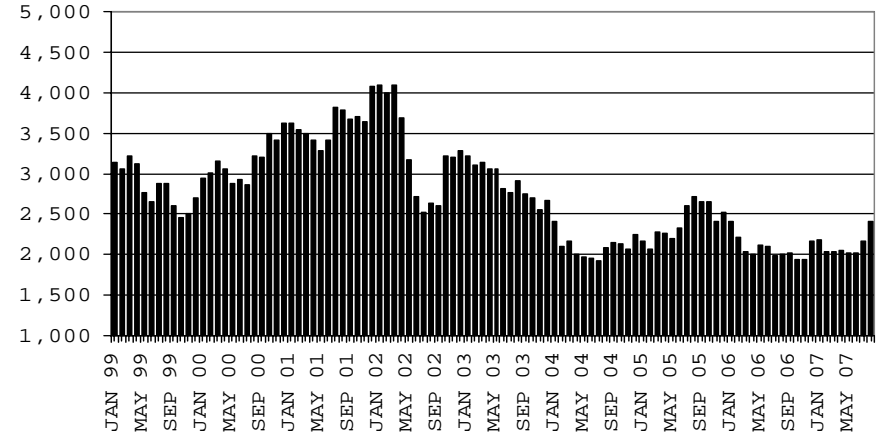
### COMPARISON OF CASES, RECIPIENTS, PAYMENTS & AVERAGE PAYMENTS

FOR 1999, 2000, 2001, 2002, 2003, 2004, 2005, 2006 & 2007

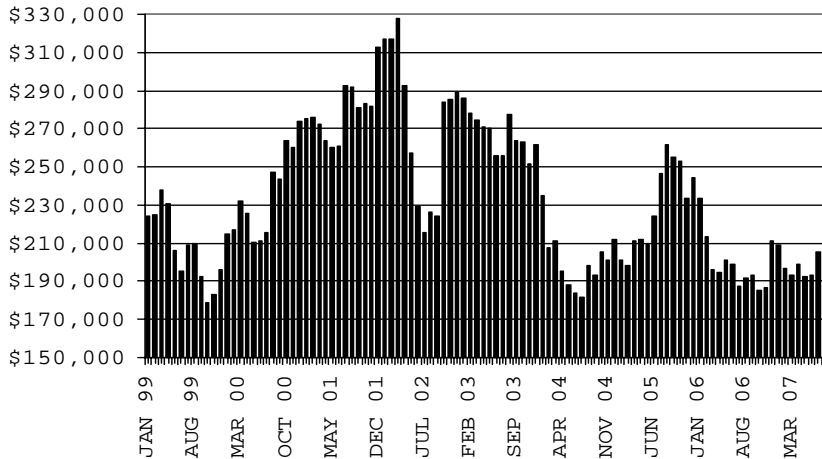
#### CASES



#### RECIPIENTS



#### PAYMENTS



#### AVERAGE PAYMENTS PER RECIPIENT

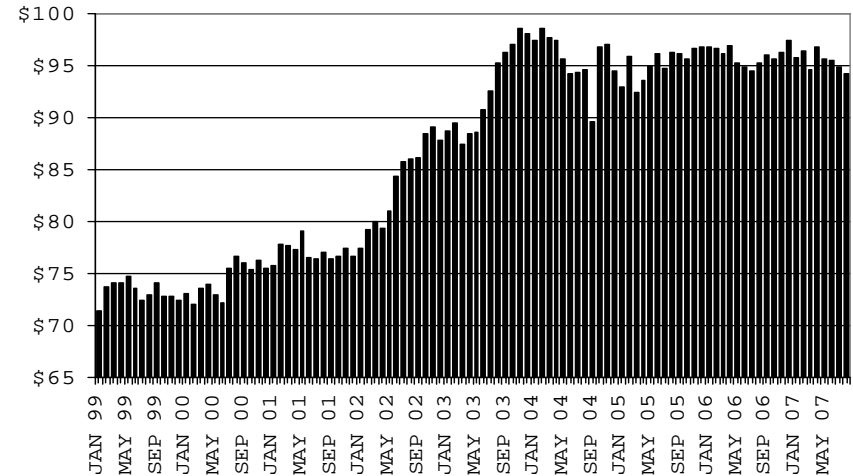




TABLE 1B 1/

CASH ASSISTANCE: ARIZONA  
 CASES WITH GRANT UNDER \$100

	AUGUST 2007							CHANGE FROM			AUGUST 2006		
	FAMILIES (CASES)	PERSONS (RECIP.)	ADULTS	CHILDREN	TOTAL PAYMENTS	AVERAGE	AVERAGE	FAMILIES (CASES)	PERSONS (RECIP.)	TOTAL PAYMENTS	FAMILIES (CASES)	PERSONS (RECIP.)	TOTAL PAYMENTS
						PAYMENT/ CASE	PAYMENT/ RECIP.						
ARIZONA	663	1,384	383	1,001	48,959	73.84	35.38	(37)	(37)	(2,146)	(109)	(237)	(8,131)
DISTRICT I													
MARICOPA	360	779	200	579	26,700	74.17	34.27	(18)	(16)	(525)	(41)	(76)	(1,583)
DISTRICT II													
PIMA	112	223	65	158	8,635	77.10	38.72	(26)	(46)	(984)	(39)	(94)	(3,424)
DISTRICT III													
APACHE	8	14	3	11	498	62.25	35.57	1	1	(84)	0	0	18
COCONINO	12	27	9	18	822	68.50	30.44	7	14	562	8	15	429
NAVAJO	9	28	8	20	471	52.33	16.82	(2)	4	(322)	(3)	6	(599)
YAVAPAI	12	25	4	21	726	60.50	29.04	0	0	(88)	(10)	(17)	(565)
DISTRICT IV													
LA PAZ	6	11	5	6	407	67.83	37.00	(2)	(3)	(185)	(1)	(6)	(50)
MOHAVE	28	51	20	31	1,729	61.75	33.90	(3)	(5)	(952)	(17)	(40)	(1,742)
YUMA	30	54	18	36	2,497	83.23	46.24	3	5	572	6	12	544
DISTRICT V													
GILA	18	31	13	18	1,099	61.06	35.45	8	11	171	7	3	205
PINAL	37	85	24	61	3,079	83.22	36.22	(3)	(3)	(199)	(1)	7	(64)
DISTRICT VI													
COCHISE	15	27	6	21	1,333	88.87	49.37	(1)	0	(106)	(13)	(31)	(593)
GRAHAM	10	15	5	10	574	57.40	38.27	1	4	60	(1)	(6)	(224)
GREENLEE	1	2	1	1	47	47.00	23.50	1	2	(30)	(1)	(5)	(195)
SANTA CRUZ	5	12	2	10	342	68.40	28.50	(3)	(5)	(36)	(3)	(5)	(288)

EXCLUDES: PRIOR MONTH NET TOTALS OF 0 CASES; 0 RECIPIENTS; \$0.

# CHART 1B

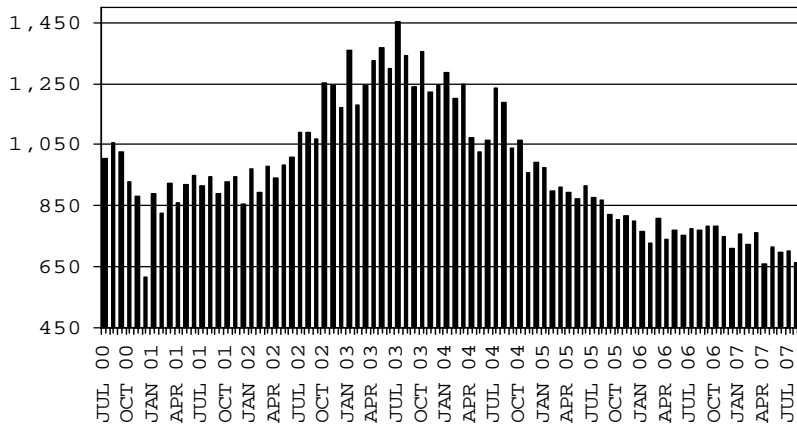
## CASH ASSISTANCE PROGRAM

### CASES WITH GRANT UNDER \$100

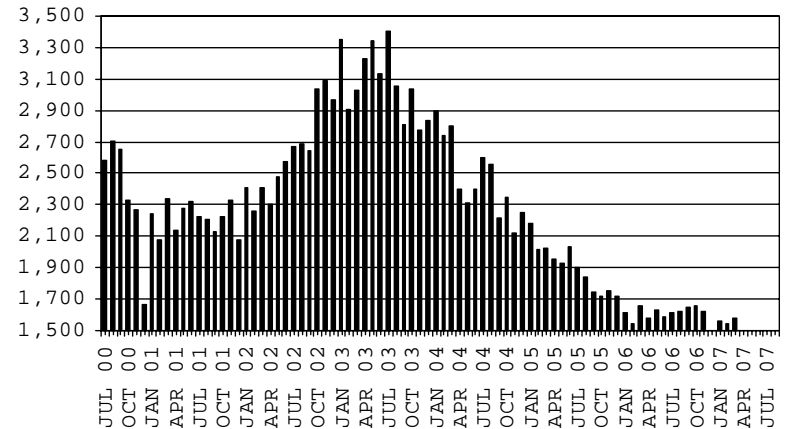
#### COMPARISON OF CASES, RECIPIENTS, PAYMENTS & AVERAGE PAYMENTS

FOR 2000, 2001, 2002, 2003, 2004, 2005, 2006 & 2007

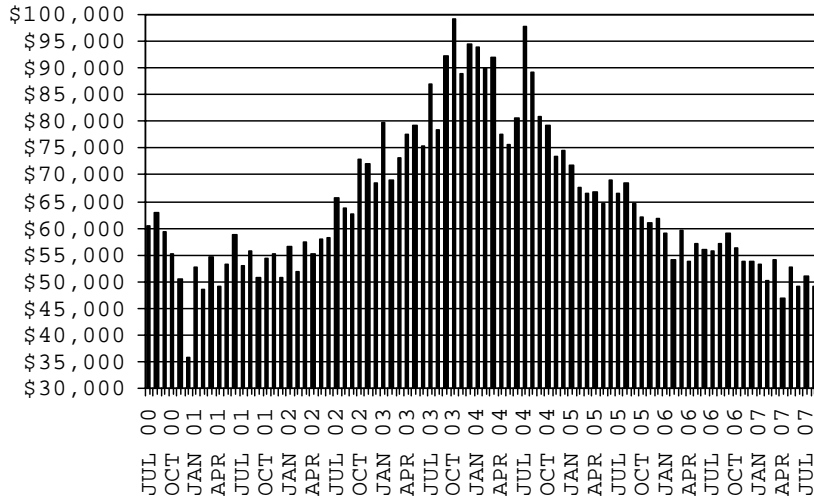
**CASES**



**RECIPIENTS**



**PAYMENTS**



**AVERAGE PAYMENTS PER RECIPIENT**

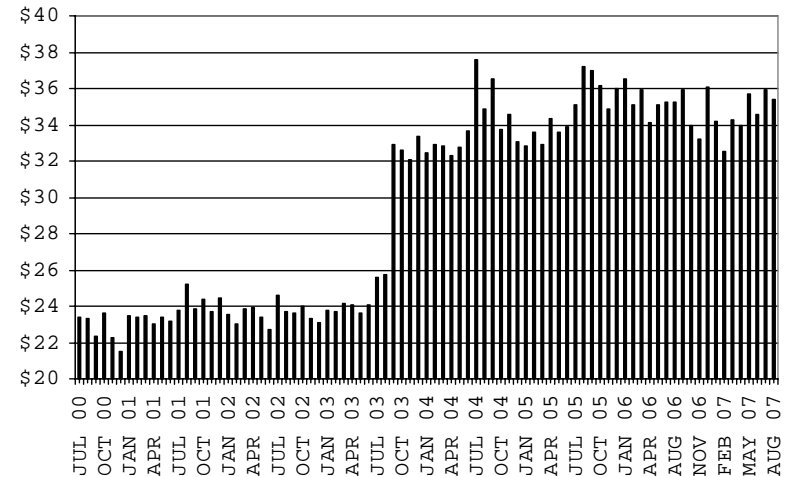


TABLE 1C 1/

CASH ASSISTANCE UNEMPLOYED PARENT PROGRAM: ARIZONA  
 CASES WITH GRANT UNDER \$100

	AUGUST 2007							CHANGE FROM					
								JULY 2007			AUGUST 2006		
	FAMILIES (CASES)	PERSONS (RECIP.)	ADULTS	CHILDREN	TOTAL PAYMENTS	AVERAGE PAYMENT/ CASE	AVERAGE PAYMENT/ RECIP.	FAMILIES (CASES)	PERSONS (RECIP.)	TOTAL PAYMENTS	FAMILIES (CASES)	PERSONS (RECIP.)	TOTAL PAYMENTS
ARIZONA	17	49	22	27	932	54.82	19.02	2	0	48	13	41	745
DISTRICT I													
MARICOPA	5	14	5	9	393	78.60	28.07	(1)	(6)	66	4	13	335
DISTRICT II													
PIMA	5	11	6	5	308	61.60	28.00	(1)	(9)	(70)	3	5	236
DISTRICT III													
APACHE	0	0	0	0	0	0.00	0.00	0	0	0	0	0	0
COCONINO	0	0	0	0	0	0.00	0.00	0	0	0	0	0	0
NAVAJO	0	0	0	0	0	0.00	0.00	0	0	0	0	0	0
YAVAPAI	0	0	0	0	0	0.00	0.00	0	0	0	0	0	0
DISTRICT IV													
LA PAZ	1	4	2	2	17	17.00	4.25	1	4	17	1	4	17
MOHAVE	3	9	6	3	128	42.67	14.22	1	3	42	3	9	128
YUMA	2	6	1	5	62	31.00	10.33	2	6	62	1	5	5
DISTRICT V													
GILA	0	0	0	0	0	0.00	0.00	0	0	0	0	0	0
PINAL	1	5	2	3	24	24.00	4.80	1	5	24	1	5	24
DISTRICT VI													
COCHISE	0	0	0	0	0	0.00	0.00	0	0	0	0	0	0
GRAHAM	0	0	0	0	0	0.00	0.00	(1)	(3)	(93)	0	0	0
GREENLEE	0	0	0	0	0	0.00	0.00	0	0	0	0	0	0
SANTA CRUZ	0	0	0	0	0	0.00	0.00	0	0	0	0	0	0

EXCLUDES: PRIOR MONTH NET TOTALS OF 38 CASES; 141 RECIPIENTS; \$1,832.

10/9/2007

# CHART 1C

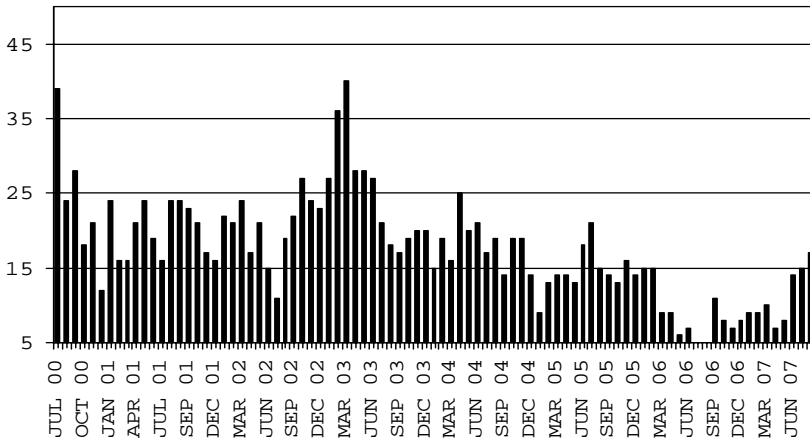
## CASH ASSISTANCE UNEMPLOYED PARENT PROGRAM

### CASES WITH GRANT UNDER \$100

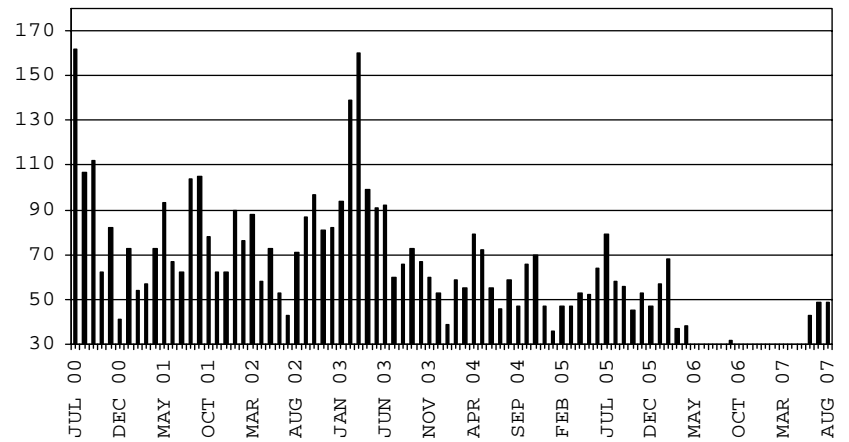
#### COMPARISON OF CASES, RECIPIENTS, PAYMENTS & AVERAGE PAYMENTS

FOR 2000, 2001, 2002, 2003, 2004, 2005, 2006 & 2007

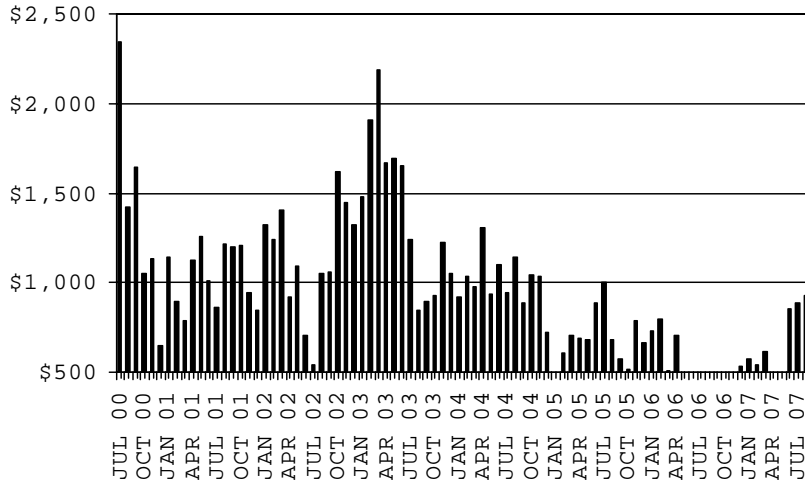
**CASES**



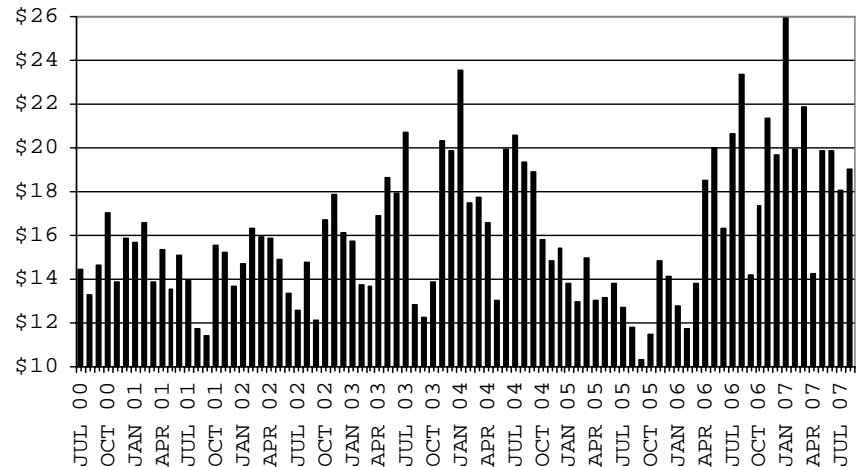
**RECIPIENTS**



**PAYMENTS**



**AVERAGE PAYMENTS PER RECIPIENT**



**TABLE 2**  
**GENERAL ASSISTANCE: ARIZONA 1/**

	CHANGE FROM										
	AUGUST 2007					JULY 2007			AUGUST 2006		
	NUMBER OF CASES	PERSONS (RECIP.)	TOTAL PAYMENTS	AVERAGE PAYMENT/ CASE	AVERAGE PAYMENT/ RECIP.	NUMBER OF CASES	PERSONS (RECIP.)	TOTAL PAYMENTS	NUMBER OF CASES	PERSONS (RECIP.)	TOTAL PAYMENTS
ARIZONA	1,310	1,315	200,787	153.27	152.69	8	6	1,929	63	61	10,531
DISTRICT I											
MARICOPA	567	567	87,674	154.63	154.63	22	22	4,112	67	64	12,352
DISTRICT II											
PIMA	349	350	51,710	148.17	147.74	10	10	1,171	32	33	2,953
DISTRICT III											
APACHE	8	9	1,249	156.13	138.78	(3)	(4)	(579)	(1)	(1)	(85)
COCONINO	21	22	3,051	145.29	138.68	0	0	(164)	3	3	462
NAVAJO	33	33	5,333	161.61	161.61	0	0	76	9	9	2,011
YAVAPAI	51	52	7,967	156.22	153.21	(7)	(7)	(1,152)	2	2	275
DISTRICT IV											
LA PAZ	9	9	1,362	151.33	151.33	(1)	(1)	(108)	5	5	800
MOHAVE	65	65	10,085	155.15	155.15	(4)	(5)	(747)	(27)	(27)	(3,548)
YUMA	25	25	3,365	134.60	134.60	(8)	(8)	(862)	(13)	(13)	(2,595)
DISTRICT V											
GILA	125	126	19,873	158.98	157.72	2	2	822	9	10	1,642
PINAL	22	22	3,593	163.32	163.32	0	0	263	(3)	(3)	(270)
	103	104	16,280	158.06	156.54	2	2	559	12	13	1,912
DISTRICT VI											
COCHISE	57	57	9,118	159.96	159.96	(3)	(3)	(640)	(23)	(24)	(3,736)
GRAHAM	45	45	7,202	160.04	160.04	(1)	(1)	(329)	(18)	(19)	(2,841)
GREENLEE	8	8	1,319	164.88	164.88	(3)	(3)	(454)	(3)	(3)	(519)
SANTA CRUZ	1	1	173	173.00	173.00	0	0	0	0	0	0
	3	3	424	141.33	141.33	1	1	143	(2)	(2)	(376)

1/EXCLUDES: PRIOR MONTH NET TOTALS OF : 260 CASES; 260 RECIPIENTS; \$56,463.  
REFUGEE RESETTLEMENT PROGRAM: 87 CASES; 164 RECIPIENTS; \$24,017.

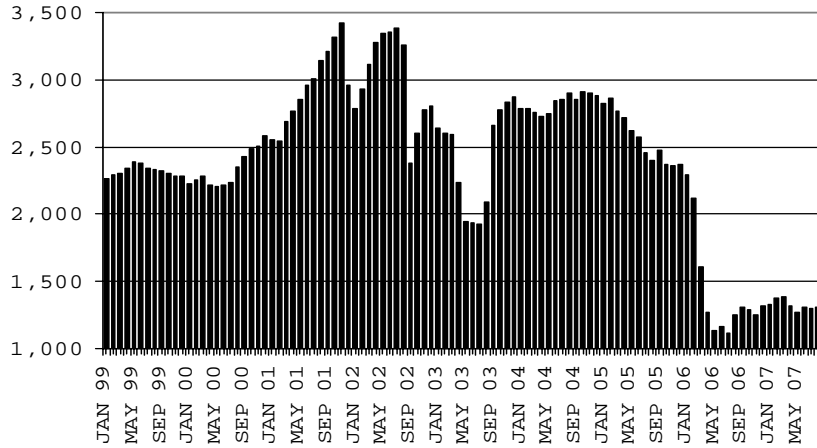
# CHART 2

## GENERAL ASSISTANCE PROGRAM

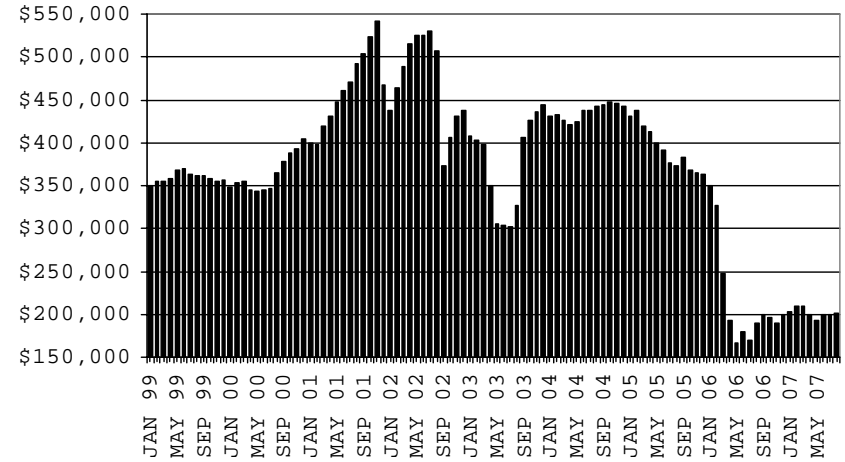
### COMPARISON OF CASES, PAYMENTS & AVERAGE PAYMENTS

FOR 1999, 2000, 2001, 2002, 2003, 2004, 2005, 2006 & 2007

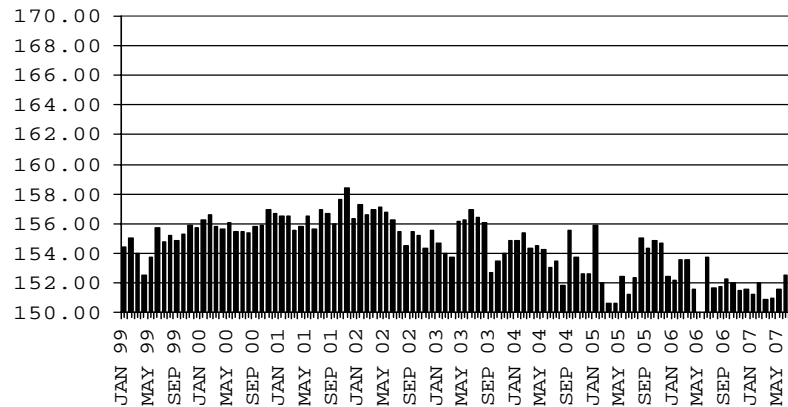
#### CASES



#### PAYMENTS



#### AVERAGE PAYMENT PER CASE



**TABLE 4**

**TUBERCULOSIS CONTROL: ARIZONA 1/**

	AUGUST 2007					CHANGE FROM					
						JULY 2007			AUGUST 2006		
	NUMBER OF CASES	PERSONS (RECIP.)	TOTAL PAYMENTS	AVERAGE PAYMENT/ CASE	AVERAGE PAYMENT/ RECIP.	NUMBER OF CASES	PERSONS (RECIP.)	TOTAL PAYMENTS	NUMBER OF CASES	PERSONS (RECIP.)	TOTAL PAYMENTS
ARIZONA	12	12	1,322	110.17	110.17	1	1	201	(11)	(11)	(1,435)
DISTRICT I											
MARICOPA	12	12	1,322	110.17	110.17	1	1	201	(10)	(10)	(1,327)
DISTRICT II											
PIMA	0	0	0	0.00	0.00	0	0	0	(1)	(1)	(108)
DISTRICT III											
APACHE	0	0	0	0.00	0.00	0	0	0	0	0	0
COCONINO	0	0	0	0.00	0.00	0	0	0	0	0	0
NAVAJO	0	0	0	0.00	0.00	0	0	0	0	0	0
YAVAPAI	0	0	0	0.00	0.00	0	0	0	0	0	0
DISTRICT IV											
LA PAZ	0	0	0	0.00	0.00	0	0	0	0	0	0
MOHAVE	0	0	0	0.00	0.00	0	0	0	0	0	0
YUMA	0	0	0	0.00	0.00	0	0	0	0	0	0
DISTRICT V											
GILA	0	0	0	0.00	0.00	0	0	0	0	0	0
PINAL	0	0	0	0.00	0.00	0	0	0	0	0	0
DISTRICT VI											
COCHISE	0	0	0	0.00	0.00	0	0	0	0	0	0
GRAHAM	0	0	0	0.00	0.00	0	0	0	0	0	0
GREENLEE	0	0	0	0.00	0.00	0	0	0	0	0	0
SANTA CRUZ	0	0	0	0.00	0.00	0	0	0	0	0	0

1/EXCLUDES: PRIOR MONTH NET TOTALS OF : 0 CASES; 0 RECIPIENTS; \$0.

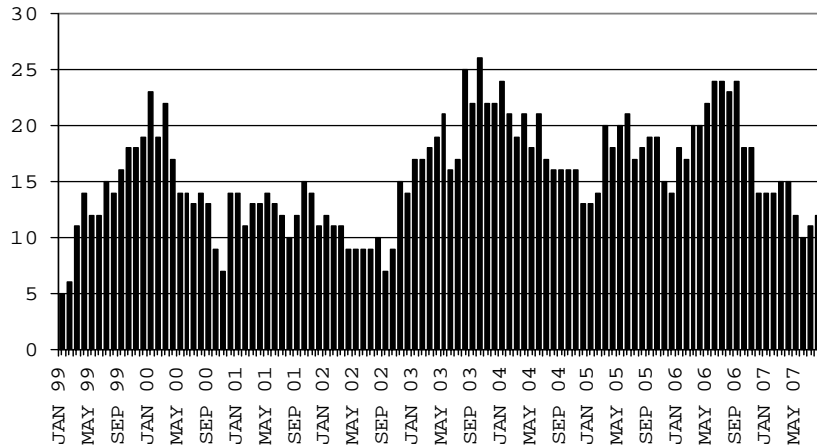
# CHART 4

## TUBERCULOSIS CONTROL PROGRAM

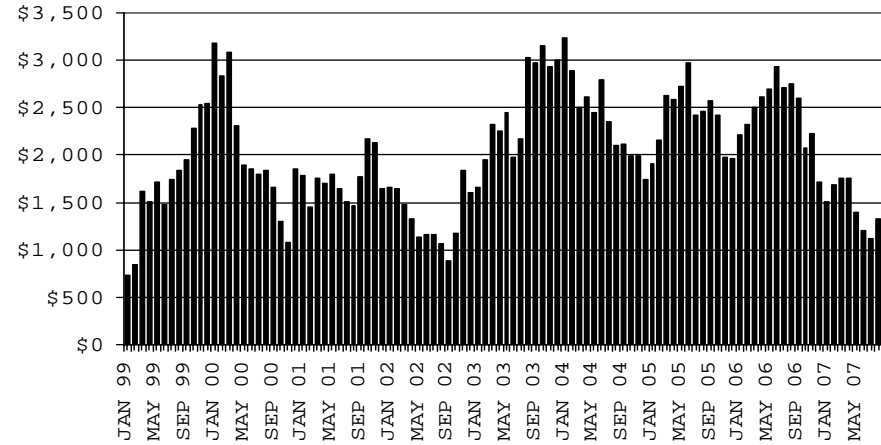
### COMPARISON OF CASES, PAYMENTS & AVERAGE PAYMENTS

FOR 1999, 2000, 2001, 2002, 2003, 2004, 2005, 2006 & 2007

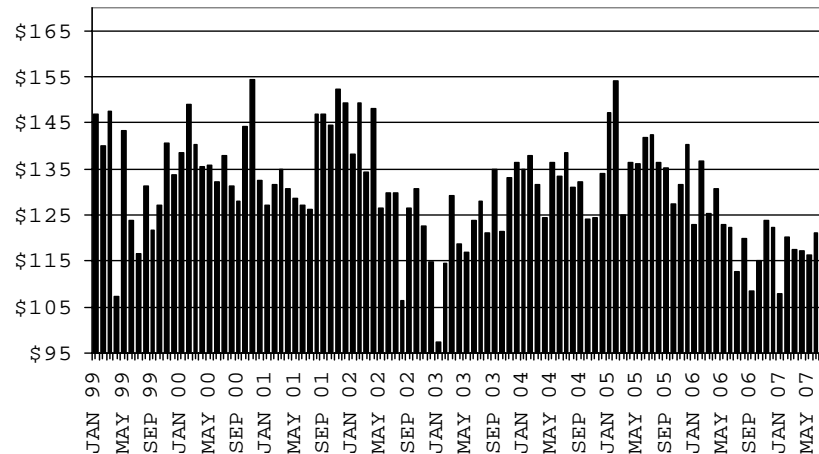
#### CASES



#### PAYMENTS



#### AVERAGE PAYMENT PER CASE





**TABLE 5**

**SUPPLEMENTAL PAYMENTS PROGRAM: ARIZONA 1/  
 BASED ON HB 2535 SPP IS SUSPENDED FROM JULY, 2003 THROUGH JUNE, 2004**

CHANGE FROM

	AUGUST 2007			JULY 2007		AUGUST 2006	
	NUMBER OF PAYMENTS	TOTAL PAYMENTS	AVERAGE PAYMENT	NUMBER OF PAYMENTS	TOTAL PAYMENTS	NUMBER OF PAYMENTS	TOTAL PAYMENTS
ARIZONA	0	0	0	0	0	0	0
DISTRICT I							
MARICOPA	0	0	0	0	0	0	0
DISTRICT II							
PIMA	0	0	0	0	0	0	0
DISTRICT III							
APACHE	0	0	0	0	0	0	0
COCONINO	0	0	0	0	0	0	0
NAVAJO	0	0	0	0	0	0	0
YAVAPAI	0	0	0	0	0	0	0
DISTRICT IV							
LA PAZ	0	0	0	0	0	0	0
MOHAVE	0	0	0	0	0	0	0
YUMA	0	0	0	0	0	0	0
DISTRICT V							
GILA	0	0	0	0	0	0	0
PINAL	0	0	0	0	0	0	0
DISTRICT VI							
COCHISE	0	0	0	0	0	0	0
GRAHAM	0	0	0	0	0	0	0
GREENLEE	0	0	0	0	0	0	0
SANTA CRUZ	0	0	0	0	0	0	0

1/EXCLUDES: PRIOR MONTH NET TOTALS OF : 0 CASES (PERSONS); \$0.  
 1/TABLE 5 IS BASED ON THE LOCATION OF THE OFFICE THAT PROCEEDS THE APPLICATION.

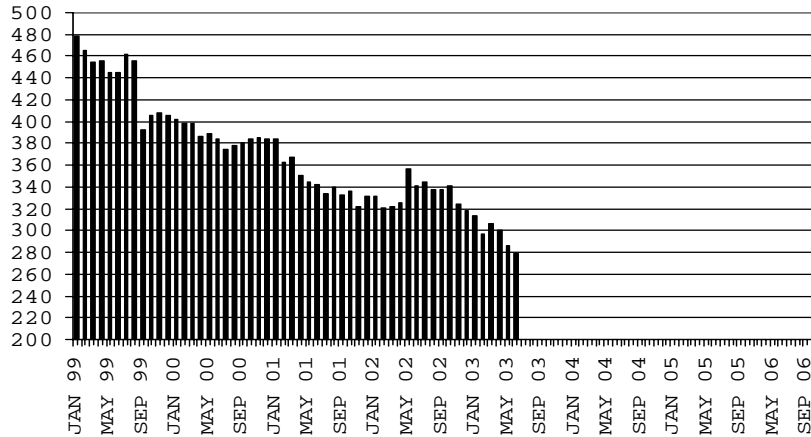
# CHART 5

## SUPPLEMENTAL PAYMENTS PROGRAM

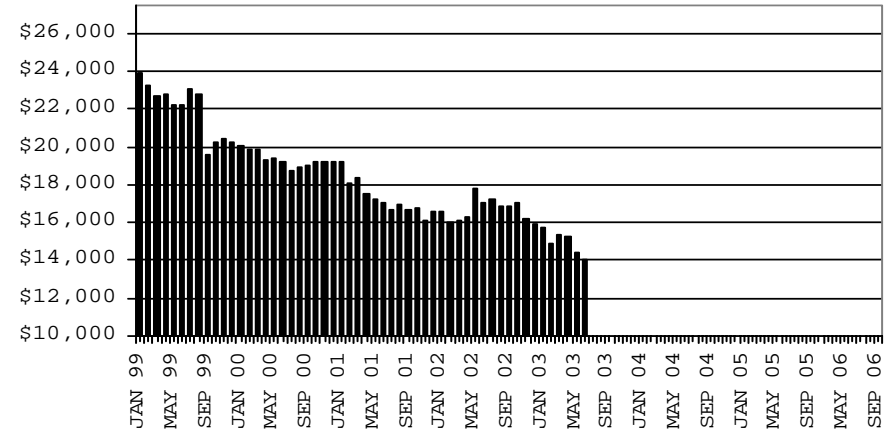
### COMPARISON OF CASES, PAYMENTS & AVERAGE PAYMENTS

FOR 1999, 2000, 2001, 2002, 2003, 2004, 2005, 2006 & 2007

**CASES**



**PAYMENTS**



**AVERAGE PAYMENT PER CASE**

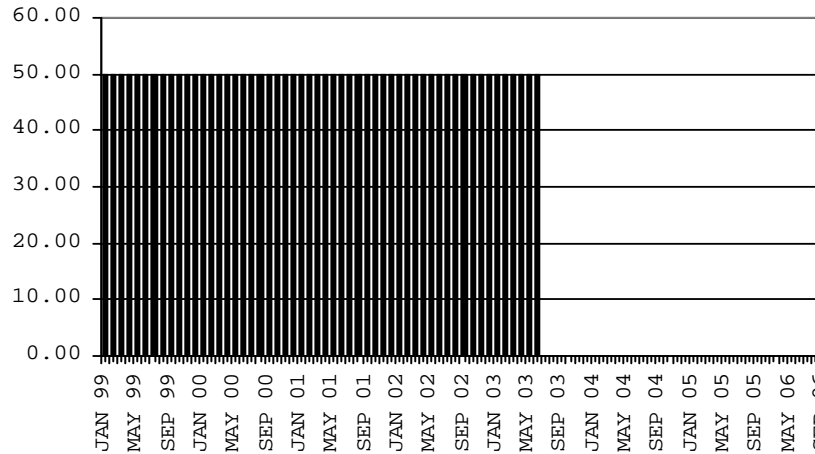


TABLE 6

FOOD STAMP PROGRAM: ARIZONA 1/

	CHANGE FROM										
	AUGUST 2007					JULY 2007			AUGUST 2006		
	HOUSEHOLDS	PERSONS	TOTAL COUPON ISSUANCE	AVERAGE ALLOT./ HOUSEHOLD	AVERAGE ALLOT./ PERSON	HOUSEHOLDS	PERSONS	TOTAL COUPON ISSUANCE	HOUSEHOLDS	PERSONS	TOTAL COUPON ISSUANCE
ARIZONA	231,338	565,872	55,115,690	238.25	97.40	5,069	11,483	1,007,583	13,544	30,398	4,032,741
DISTRICT I											
MARICOPA	114,273	278,307	27,629,728	241.79	99.28	2,449	5,273	464,572	7,440	17,782	2,244,776
DISTRICT II											
PIMA	41,352	95,154	9,334,361	225.73	98.10	1,039	2,077	211,370	2,075	4,029	582,426
DISTRICT III											
APACHE	6,347	19,872	1,847,335	291.06	92.96	183	392	34,837	100	(57)	64,257
COCONINO	5,241	15,530	1,411,111	269.24	90.86	114	300	17,502	251	372	70,605
NAVAJO	9,353	26,647	2,473,828	264.50	92.84	131	439	19,841	569	1,346	165,754
YAVAPAI	6,289	12,726	1,209,015	192.24	95.00	123	327	15,123	330	621	83,257
DISTRICT IV											
LA PAZ	1,258	2,812	278,661	221.51	99.10	32	63	6,284	31	82	4,581
MOHAVE	10,325	22,085	2,175,162	210.67	98.49	230	588	37,558	808	2,054	224,157
YUMA	10,216	27,850	2,531,070	247.76	90.88	308	856	88,042	371	674	93,886
DISTRICT V											
GILA	3,459	8,158	806,335	233.11	98.84	83	189	16,581	53	(28)	4,864
PINAL	11,703	29,554	2,906,413	248.35	98.34	204	620	63,737	1,544	4,169	470,707
DISTRICT VI											
COCHISE	6,671	14,951	1,401,784	210.13	93.76	89	181	9,819	39	(355)	7,709
GRAHAM	2,050	4,822	453,746	221.34	94.10	17	(16)	(724)	(119)	(452)	(25,443)
GREENLEE	257	527	49,996	194.54	94.87	(10)	(22)	(2,868)	(44)	(110)	(8,121)
SANTA CRUZ	2,544	6,877	607,145	238.66	88.29	77	216	25,909	96	271	49,326

1/EXCLUDES: PRIOR MONTH NET TOTALS OF : 9,445 CASES; 24,864 RECIPIENTS; \$1,210,682.  
 AGED CANCELATIONS: 0 CASES; 0 RECIPIENTS; 0.  
 FS COUPON CONVERSIONS: 0 CASES; 0 RECIPIENTS; \$0.  
 FS REINSTATED: 0 CASES; \$0.  
 FS ZERO PAY: 0 CASES; 0 RECIPIENTS.

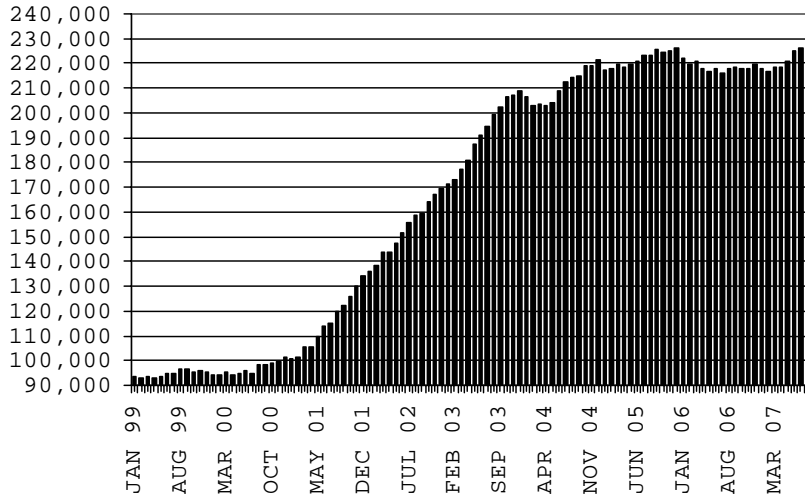
# CHART 6

## FOOD STAMPS PROGRAM

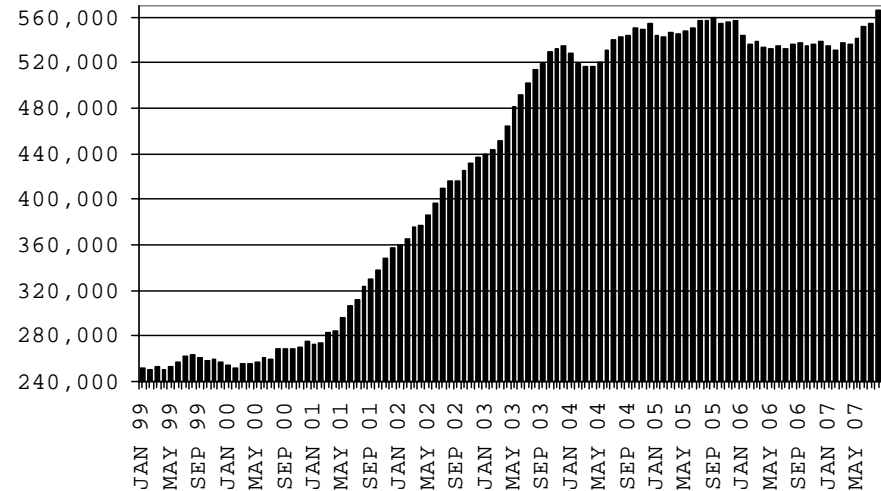
### COMPARISON OF HOUSEHOLDS, RECIPIENTS, PAYMENTS & AVERAGE PAYMENTS

FOR 1999, 2000, 2001, 2002, 2003, 2004, 2005, 2006 & 2007

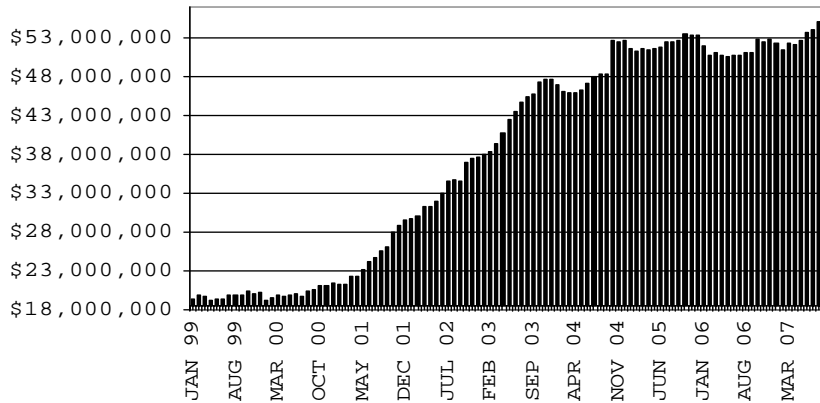
#### HOUSEHOLDS



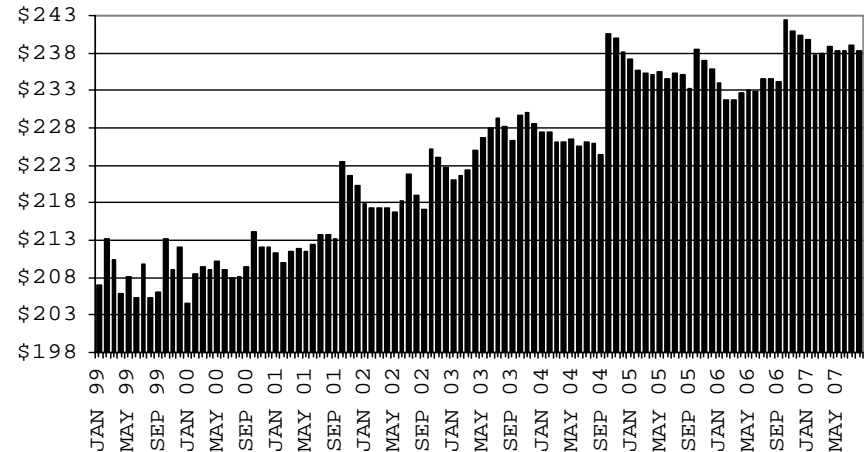
#### RECIPIENTS



#### TOTAL PAYMENTS



#### AVERAGE PAYMENT PER HOUSEHOLD



**TABLE 7A**  
**MEDICAL ASSISTANCE PROGRAM**  
**RECIPIENTS**

**AUGUST 2007**

	SOBRA WOMAN 133% FPL	SOBRA CHILD	ADULT W/O CHILD 100% FPL	FOSTER CARE	1931 36% FPL	FEDERAL EMERGENCY SERVICES	INFANTS	ADULT W/O CHILD 40% FPL	MEDICAL W/SPEND DOWN	SOBRA WOMAN 100% FPL	SOBRA CHILD 100% FPL	TRANSITIONAL MEDICAL T1 - T4	1931 100% FPL	YATI	OTHER	TOTAL RECIPIENTS
ARIZONA	11,720	61,554	36,713	9,269	253,750	85,863	50,698	83,849	5,172	3,491	156,448	42,466	74,631	226	21,396	897,246
DISTRICT I																
MARICOPA	5,959	33,938	15,624	4,647	129,929	65,876	30,490	36,117	2,858	1,762	85,873	21,148	34,093	109	10,568	478,991
DISTRICT II																
PIMA	1,837	9,400	7,179	2,586	39,922	10,826	7,095	15,349	678	534	24,836	7,203	13,408	71	3,771	144,695
DISTRICT III																
APACHE	251	1,421	864	40	10,698	96	965	4,170	64	103	3,761	1,140	2,284	0	330	26,187
COCONINO	409	1,365	1,085	125	6,992	506	1,171	2,724	84	88	3,428	1,286	2,061	12	340	21,676
NAVAJO	373	2,194	1,261	119	11,198	314	1,360	4,527	162	111	4,316	1,314	2,716	4	501	30,470
YAVAPAI	451	1,779	1,635	392	5,260	1,558	1,432	2,580	307	104	3,878	1,357	2,299	12	871	23,915
DISTRICT IV																
LA PAZ	43	213	188	18	1,201	175	175	559	21	25	626	149	333	0	133	3,859
MOHAVE	495	2,147	1,880	232	8,897	969	1,649	4,182	286	165	6,189	1,710	3,503	2	1,158	33,464
YUMA	609	2,591	2,357	257	10,884	2,293	1,941	3,202	174	208	8,291	2,084	5,215	1	1,132	41,239
DISTRICT V																
GILA	138	760	492	79	4,010	156	481	1,832	97	34	1,502	486	951	1	263	11,282
PINAL	624	3,541	1,764	423	13,547	1,765	2,213	4,723	243	180	6,722	2,127	3,499	8	1,116	42,495
DISTRICT VI																
COCHISE	263	1,107	1,283	255	6,044	693	854	2,217	111	88	3,496	1,205	2,131	5	705	20,457
GRAHAM	141	442	365	57	2,118	58	359	856	27	37	995	568	622	1	127	6,773
GREENLEE	27	32	45	10	297	6	55	111	8	2	121	85	64	0	22	885
SANTA CRUZ	100	624	691	29	2,753	572	458	700	52	50	2,414	604	1,452	0	359	10,858

**TABLE 7B**

**MEDICAL ASSISTANCE PROGRAM**

**RECIPIENTS**

**CHANGE FROM**

**JULY 2007**

	SOBRA WOMAN 133% FPL	SOBRA CHILD	ADULT W/O CHILD 100% FPL	FOSTER CARE	1931 36% FPL	FEDERAL EMERGENCY SERVICES	INFANTS	ADULT W/O CHILD 40% FPL	MEDICAL W/SPEND DOWN	SOBRA WOMAN 100% FPL	SOBRA CHILD 100% FPL	TRANSITIONAL MEDICAL T1 - T4	1931 100% FPL	YATI	OTHER	TOTAL RECIPIENTS
ARIZONA	56	67	181	100	2,311	125	526	1,467	(160)	(14)	135	283	131	10	488	5,706
DISTRICT I																
MARICOPA	(8)	100	143	20	1,029	83	225	675	(94)	9	101	259	78	2	208	2,830
DISTRICT II																
PIMA	36	1	2	64	327	34	154	348	5	(28)	163	(1)	106	4	102	1,317
DISTRICT III																
APACHE	1	(29)	(22)	(2)	(47)	(4)	19	48	0	9	67	(18)	21	0	12	55
COCONINO	9	25	(22)	(1)	106	1	26	(23)	(19)	(7)	(83)	20	3	2	20	57
NAVAJO	1	23	(27)	2	71	1	23	7	(21)	(17)	(24)	(30)	(44)	0	(10)	(45)
YAVAPAI	16	(11)	42	21	(6)	(34)	(5)	56	(11)	(6)	(5)	44	5	0	18	124
DISTRICT IV																
LA PAZ	0	(16)	(6)	0	8	(17)	4	11	7	0	(3)	(3)	7	0	(1)	(9)
MOHAVE	(7)	(12)	14	(3)	(23)	33	14	130	2	9	98	76	(4)	0	40	367
YUMA	12	(9)	(16)	(10)	441	31	40	105	(36)	15	(33)	(130)	63	0	46	519
DISTRICT V																
GILA	(6)	8	45	7	202	(12)	0	33	(6)	(11)	(75)	61	(60)	2	45	233
PINAL	(8)	5	(5)	2	127	6	8	4	(2)	0	(73)	15	(25)	0	11	65
	2	3	50	5	75	(18)	(8)	29	(4)	(11)	(2)	46	(35)	2	34	168
DISTRICT VI																
COCHISE	2	(13)	28	2	203	9	26	77	13	13	(71)	5	(44)	0	8	258
GRAHAM	6	18	19	5	80	3	14	35	1	5	(35)	18	4	0	7	180
GREENLEE	(6)	(19)	3	2	41	3	(4)	27	(1)	0	(40)	11	(32)	0	7	(8)
SANTA CRUZ	0	(2)	2	(1)	(8)	(2)	0	3	0	1	(19)	20	(6)	0	(4)	(16)
	2	(10)	4	(4)	90	5	16	12	13	7	23	(44)	(10)	0	(2)	102

**TABLE 7C**  
**MEDICAL ASSISTANCE PROGRAM**  
**RECIPIENTS**

**CHANGE FROM**

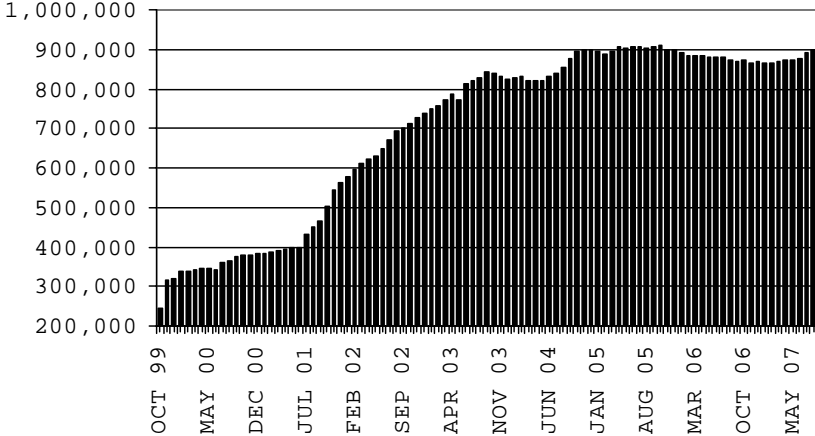
AUGUST 2006

	SOBRA WOMAN 133% FPL	SOBRA CHILD	ADULT W/O CHILD 100% FPL	FOSTER CARE	1931 36% FPL	FEDERAL EMERGENCY SERVICES	INFANTS	ADULT W/O CHILD 40% FPL	MEDICAL W/SPEND DOWN	SOBRA WOMAN 100% FPL	SOBRA CHILD 100% FPL	TRANSITIONAL MEDICAL T1 - T4	3E 1931 100% FPL	YATI	OTHER	TOTAL RECIPIENTS
ARIZONA	381	3,412	459	524	186	2,713	1,102	2,771	(415)	219	8,833	(1,860)	2,958	44	2,227	23,554
DISTRICT I																
MARICOPA	123	2,527	333	256	1,422	2,915	75	567	(241)	164	5,808	(851)	1,782	7	1,138	16,025
DISTRICT II																
PIMA	74	256	172	126	(283)	508	358	735	(79)	(56)	1,277	(137)	420	17	290	3,678
DISTRICT III																
APACHE	(11)	(30)	(34)	2	(363)	(26)	(19)	145	(2)	15	55	41	(25)	(1)	20	(233)
COCONINO	42	(37)	(70)	19	(146)	(66)	23	(65)	(36)	(2)	(364)	(113)	(102)	7	45	(865)
NAVAJO	22	122	(53)	(19)	(132)	26	62	331	13	5	163	(186)	93	4	50	501
YAVAPAI	(14)	35	42	30	66	(16)	39	130	42	(13)	128	(440)	109	6	65	209
DISTRICT IV																
LA PAZ	4	(5)	(40)	2	(97)	(31)	13	10	(2)	7	91	(19)	24	0	19	(24)
MOHAVE	(31)	111	131	6	49	(27)	127	186	(130)	10	559	(36)	113	0	139	1,207
YUMA	48	93	86	42	(664)	(411)	26	37	(22)	30	442	40	278	(3)	125	147
DISTRICT V																
GILA	14	(60)	(40)	0	(103)	(19)	21	40	6	2	(23)	17	9	(3)	3	(136)
PINAL	51	468	65	58	910	4	284	596	25	43	796	(57)	279	5	199	3,726
DISTRICT VI																
COCHISE	23	(41)	(69)	9	(366)	(98)	(3)	31	1	(4)	(7)	61	(27)	4	92	(394)
GRAHAM	23	(10)	(30)	(6)	(187)	(17)	27	3	(9)	11	(78)	(93)	(70)	1	(3)	(438)
GREENLEE	8	(17)	4	0	(61)	(2)	1	(40)	4	(1)	(37)	4	(4)	0	(3)	(144)
SANTA CRUZ	5	0	(38)	(1)	141	(27)	68	65	15	8	23	(91)	79	0	48	295

# CHART 7

## MEDICAL ASSISTANCE PROGRAM COMPARISON OF RECIPIENTS FOR 1999, 2000, 2001, 2002, 2003, 2004, 2005, 2006 & 2007

**TOTAL RECIPIENTS**



NEW SERIES WHICH INCLUDES 1931